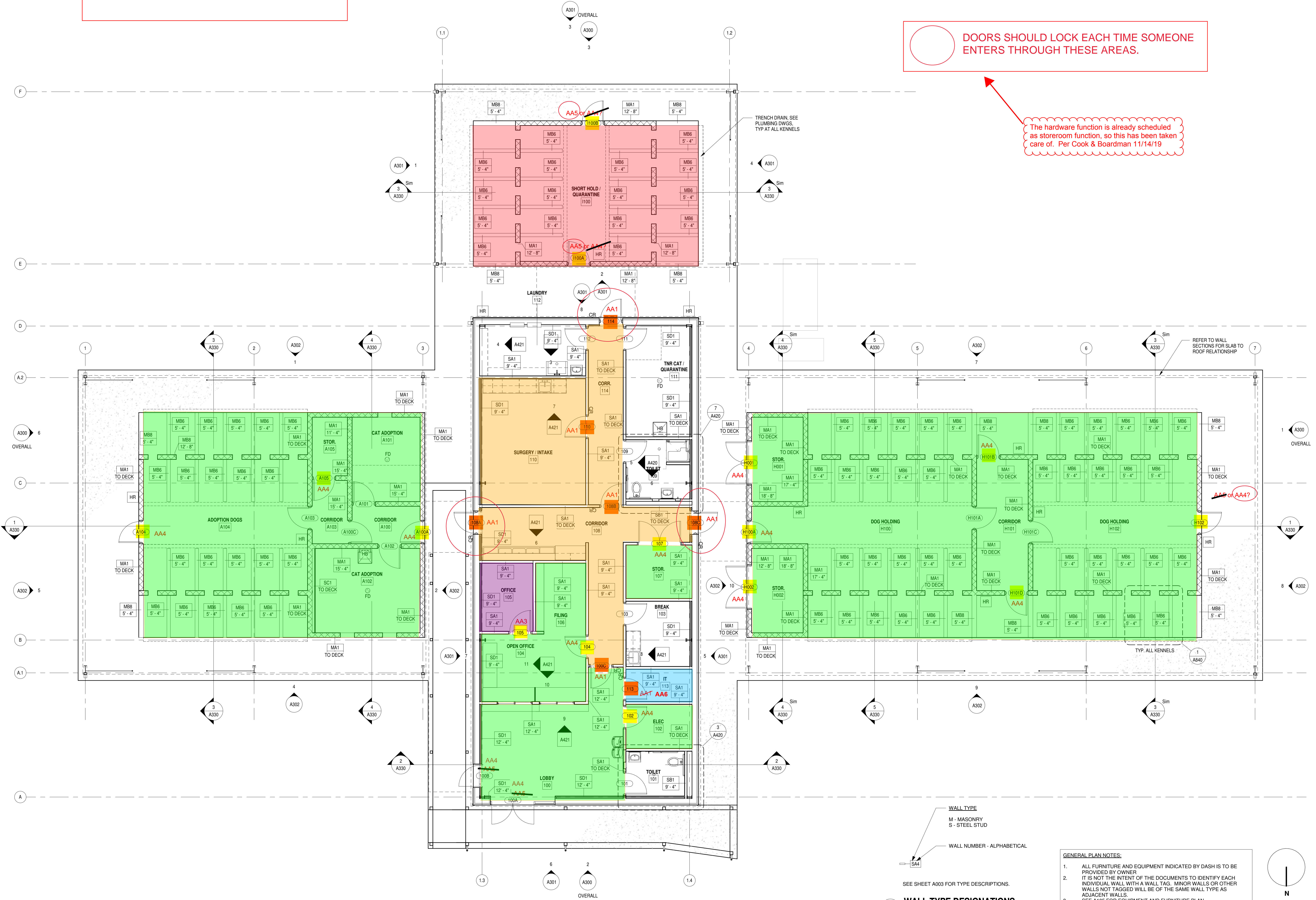


■ Doors with locking hardware  
■ Door with access control (Electric Strikes)

DOORS SHOULD LOCK EACH TIME SOMEONE ENTERS THROUGH THESE AREAS.

The hardware function is already scheduled as storeroom function, so this has been taken care of. Per Cook & Boardman 11/14/19



ALL DIMENSIONS, SPECIFICATIONS AND NOTES UNLESS OTHERWISE SPECIFIED ARE TO BE CONSIDERED AS PART OF THE CONTRACT. THE ARCHITECT SHALL BE RESPONSIBLE FOR THE ACCURACY OF THE INFORMATION PROVIDED TO THE CONTRACTOR. THE CONTRACTOR SHALL BE RESPONSIBLE FOR VERIFYING ALL DIMENSIONS AND CONDITIONS PRIOR TO CONSTRUCTION. THE ARCHITECT SHALL NOT BE RESPONSIBLE FOR THE ACCURACY OF THE INFORMATION PROVIDED TO THE CONTRACTOR BY OTHER PROFESSIONALS OR AGENCIES. THE ARCHITECT SHALL NOT BE RESPONSIBLE FOR THE ACCURACY OF THE INFORMATION PROVIDED TO THE CONTRACTOR BY OTHER PROFESSIONALS OR AGENCIES. THE ARCHITECT SHALL NOT BE RESPONSIBLE FOR THE ACCURACY OF THE INFORMATION PROVIDED TO THE CONTRACTOR BY OTHER PROFESSIONALS OR AGENCIES.

NO.	DATE	DESCRIPTION	BY
A	07/06/18	ISSUE FOR PRICING	
B	09/14/18	COORDINATION	
1	10/17/18	ISSUE FOR BID AND PERMIT	

ISSUE FOR BID AND PERMIT 10/17/18

PRINCIPAL IN CHARGE: Approver  
 PROJECT ARCHITECT: Checker  
 DRAWN BY: Author

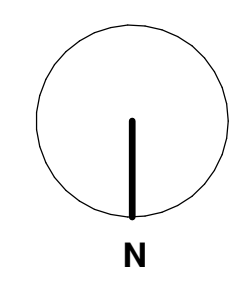
SHEET TITLE:  
**ANNOTATION PLAN**

SHEET NO. PROJ. NO.  
A100 018095.00

1 ANNOTATION PLAN  
A100 3/16" = 1'-0"

WALL TYPE  
 M - MASONRY  
 S - STEEL STUD  
 WALL NUMBER - ALPHABETICAL  
 SA1  
 SEE SHEET A003 FOR TYPE DESCRIPTIONS.  
 WALL TYPE DESIGNATIONS  
 3/4" = 1'-0"

- GENERAL PLAN NOTES:
- ALL FURNITURE AND EQUIPMENT INDICATED BY DASH IS TO BE PROVIDED BY OWNER
  - IT IS NOT THE INTENT OF THE DOCUMENTS TO IDENTIFY EACH INDIVIDUAL WALL WITH A WALL TAG. MINOR WALLS OR OTHER WALLS NOT TAGGED WILL BE OF THE SAME WALL TYPE AS ADJACENT WALLS.
  - SEE A105 FOR EQUIPMENT AND FURNITURE PLAN



## Key Schedule

### 332096 : Lancaster County Animal Shelter

<u>Outside Key Code</u>	<u>Inside Key Code</u>	<u>Door #</u>	<u>Heading Number</u>	<u>Building Area</u>	<u>Location</u>	<u>Lock Number</u>	<u>Finish</u>	<u>Hand</u>
AA4		102	HW5.1		Lobby 100 to Elec. 102	6300 DO NOT DUPLICATE MK X 3 KEYS	15	
AA4		102	HW5.1		Lobby 100 to Elec. 102	64 R8204 RNJ	26D	LH
AA4		104	HW6		Corridor 108 to Open Office 104	6300 DO NOT DUPLICATE MK X 3 KEYS	15	
AA4		104	HW6		Corridor 108 to Open Office 104	64 T1 R8205 RNJ	26D	RH
AA3		105	HW6		Open Office 104 to Office 105	6300 DO NOT DUPLICATE MK X 3 KEYS	15	
AA3		105	HW6		Open Office 104 to Office 105	64 T1 R8205 RNJ	26D	RH
AA4		107	HW5		Corridor 108 from Stor. 107	6300 DO NOT DUPLICATE MK X 3 KEYS	15	
AA4		107	HW5		Corridor 108 from Stor. 107	64 R8204 RNJ	26D	RHR
AA1		110	HW3-1		Corr. 114 to Surgery/Intake 110	6300 DO NOT DUPLICATE MK X 3 KEYS	15	
AA1		110	HW3-1		Corr. 114 to Surgery/Intake 110	64 R8237 RNJ	26D	LH
AA6		113	HW3		Lobby 100 to IT 113	6300 DO NOT DUPLICATE MK X 3 KEYS	15	
AA6		113	HW3		Lobby 100 to IT 113	64 R8204 RNJ	26D	RH
AA1		114	HW1.3		Exterior from Corr. 114	6300 DO NOT DUPLICATE MK X 3 KEYS	15	
AA1		114	HW1.3		Exterior from Corr. 114	64 8804 F ETNJ	32D	LHR
AA1		100C	HW1		Lobby 100 from Corridor 108	6300 DO NOT DUPLICATE MK X 3 KEYS	15	
AA1		100C	HW1		Lobby 100 from Corridor 108	64 8804 F ETNJ	32D	LHR

### 332096 : Lancaster County Animal Shelter

<u>Outside Key Code</u>	<u>Inside Key Code</u>	<u>Door #</u>	<u>Heading Number</u>	<u>Building Area</u>	<u>Location</u>	<u>Lock Number</u>	<u>Finish</u>	<u>Hand</u>
AA1		108A	HW1.3		Exterior from Corridor 108	6300 DO NOT DUPLICATE MK X 3 KEYS	15	
AA1		108A	HW1.3		Exterior from Corridor 108	64 8804 F ETNJ	32D	LHR
AA1		108B	HW3-1		Corridor 108 to Corr. 114	6300 DO NOT DUPLICATE MK X 3 KEYS	15	
AA1		108B	HW3-1		Corridor 108 to Corr. 114	64 R8237 RNJ	26D	RH
AA1		108C	HW1.3		Exterior from Corridor 108	6300 DO NOT DUPLICATE MK X 3 KEYS	15	
AA1		108C	HW1.3		Exterior from Corridor 108	64 8804 F ETNJ	32D	RHR
AA4		A104	HW1.3-1		Exterior from Adoption Dogs A104	6300 DO NOT DUPLICATE MK X 3 KEYS	15	
AA4		A104	HW1.3-1		Exterior from Adoption Dogs A104	64 8813 F ETNJ	32D	RHR
AA4		A105	HW5.1-1		Corridor A103 from Stor. A105	6300 DO NOT DUPLICATE MK X 3 KEYS	15	
AA4		A105	HW5.1-1		Corridor A103 from Stor. A105	64 R8204 RNJ	26D	LHR
AA4		H001	HW5.2		Exterior from Stor. H001	6300 DO NOT DUPLICATE MK X 3 KEYS	15	
AA4		H001	HW5.2		Exterior from Stor. H001	64 R8204 RNJ	32D	RHR
AA4		H002	HW5.2		Exterior from Stor. H002	6300 DO NOT DUPLICATE MK X 3 KEYS	15	
AA4		H002	HW5.2		Exterior from Stor. H002	64 R8204 RNJ	32D	RHR
AA4		H102	HW1.3-1		Exterior from Dog Holding H102	6300 DO NOT DUPLICATE MK X 3 KEYS	15	
AA4		H102	HW1.3-1		Exterior from Dog Holding H102	64 8813 F ETNJ	32D	RHR
AA4		A100A	HW1.1		Exterior to Corridor A100	64 T1 R8205 RNJ	32D	LH
AA4		H100A	HW1.1		Exterior to Dog Holding H100	64 T1 R8205 RNJ	32D	RH

### 332096 : Lancaster County Animal Shelter

<u>Outside Key Code</u>	<u>Inside Key Code</u>	<u>Door #</u>	<u>Heading Number</u>	<u>Building Area</u>	<u>Location</u>	<u>Lock Number</u>	<u>Finish</u>	<u>Hand</u>
AA4		H101B	HW1-1		Exterior from Corridor H101	6300 DO NOT DUPLICATE MK X 3 KEYS	15	
AA4		H101B	HW1-1		Exterior from Corridor H101	64 8813 F ETNJ	32D	RHR
AA4		H101D	HW1-1		Exterior from Corridor H101	6300 DO NOT DUPLICATE MK X 3 KEYS	15	
AA4		H101D	HW1-1		Exterior from Corridor H101	64 8813 F ETNJ	32D	RHR
AA5		I100A	HW1.1		Exterior to Short Hold/Quarantine I100	64 T1 R8205 RNJ	32D	LH
AA5		I100B	HW1.3-1		Exterior from Short Hold/Quarantine I100	6300 DO NOT DUPLICATE MK X 3 KEYS	15	
AA5		I100B	HW1.3-1		Exterior from Short Hold/Quarantine I100	64 8813 F ETNJ	32D	LHR