

ELEVATIONS AND BENCHMARKS SHOWN HEREON ARE BASED ON THE NOTED ELEVATION REFERENCE. USE OF THE BENCHMARKS FOR VERTICAL CONTROL SHOULD BE PERFORMED IN ACCORDANCE WITH STANDARDS OF PRACTICE FOR PROFESSIONAL SURVEYORS AND MAPPERS AS OUTLINED IN RULE 5J-17, FLORIDA ADMINISTRATIVE CODE. PRIOR TO UTILIZING THE BENCHMARKS FOR VERTICAL CONTROL, USER SHALL CHECK PROVIDED BENCHMARKS TO ENSURE THAT THEY HAVE NOT BEEN DISTURBED AND THAT THEY ARE RELATIVE TO EACH OTHER.

HORIZONTAL CONTROL SHOWN HEREON IS REFERENCED TO STATE PLANE ZONE: FLORIDA NORTH, NAD 1983, NGS ADJUSTMENT YEAR 2007.

APPARENT UTILITIES, UNDERGROUND UTILITIES AND BURIED PIPES SHOWN HEREON HAVE BEEN LOCATED AND ARE INDICATED IN THEIR RELATIVE POSITIONS. HOWEVER, THERE MAY EXIST UNDERGROUND UTILITIES AND BURIED PIPES WHICH WERE NOT LOCATED OR OF WHICH WE HAVE NO KNOWLEDGE.

A PORTION OF THE UNDERGROUND UTILITIES SHOWN HEREON WAS TAKEN FROM CIVIL ENGINEERING PLANS FOR GORE PARK BOAT RAMP PREPARED BY DEWBERRY, PROJECT NUMBER 50081990, DATED MAY 2017.

DESCRIPTION: BEGIN AT THE SOUTHEAST CORNER OF BLOCK 2 OF THE CALLAWAY PLAT AS RECORDED IN PLAT BOOK 5, PAGE 1 OF THE PUBLIC RECORDS OF BAY COUNTY, FLORIDA. THENCE NORTHWESTERLY ALONG THE SOUTHWESTERLY LINE OF BLOCK 2 TO THE SOUTHWEST CORNER OF BLOCK 2; THENCE NORTH TO THE NORTHWEST CORNER OF BLOCK 2; THENCE WEST ALONG THE SOUTH LINE OF MINNEOLA STREET TO A POINT THAT IS 60 FEET SOUTH OF THE SOUTHWEST CORNER OF BLOCK 56 OF SAID CALLAWAY PLAT; THENCE SOUTH ALONG A LINE THAT IS EXTENDED FROM THE WEST LINE OF SAID BLOCK 56 TO THE WATER'S EDGE OF BABY BAYOU; THENCE MEANDERING SOUTHEASTERLY AND NORTHERLY ALONG THE WATER'S EDGE OF BABY BAYOU TO A POINT ON THE SOUTHWESTERLY LINE OF BLOCK 1 OF SAID CALLAWAY PLAT, IF SAID LINE WAS EXTENDED TO THE WATER'S EDGE; THENCE NORTHWESTERLY ALONG THE SAID SOUTHWESTERLY LINE OF BLOCK 1, IF EXTENDED TO THE SOUTHEAST CORNER OF BLOCK 2 OF SAID PLAT, BEING THE POINT OF BEGINNING.

SYMBOLS & ABBREVIATIONS

P.O.C.	POINT OF COMMENCEMENT
P.O.B.	POINT OF BEGINNING
N	NORTH
S	SOUTH
E	EAST
W	WEST
°	DEGREES
'	MINUTES OR FEET
"	SECONDS OR INCHES
FD.	FOUND
COR.	CORNER
LS.	LAND SURVEYOR
LB.	LAND SURVEYOR BUSINESS
NO.	NUMBER
I.D.	IDENTIFICATION
CONC.	CONCRETE
MON.	MONUMENT
R.O.W.	RIGHT OF WAY
±	MORE OR LESS
NAVD	NORTH AMERICAN VERTICAL DATUM
EL.	ELEVATION
B.M.	BENCHMARK
F.F.	FINISHED FLOOR
MH	MANHOLE
RCP	REINFORCED CONCRETE PIPE
CPP	CORRUGATED PLASTIC PIPE
PVC	POLYVINYL CHLORIDE
INV.	INVERT
ELEC.	ELECTRIC
AC	AIR CONDITIONING
BFP	BACKFLOW PREVENTER
→	AERIAL UTILITY LINE
-W-	WATER MAIN
-S-	SANITARY SEWER MAIN
⊗	WATER VALVE
⊕	FIRE HYDRANT
⊙	WATER METER
⊛	CLEANOUT
⊚	MANHOLE
⊠	LIGHT POLE
⊡	POWER POLE
⊢	GUY ANCHOR
⊣	SIGN POLE
⊤	STORM INLET

SYMBOL LEGEND

-35-	EXISTING CONTOURS
[Pattern]	EXISTING CONCRETE TO REMAIN
[Pattern]	EXISTING CONCRETE TO BE REMOVED
[Pattern]	EXISTING ASPHALT TO REMAIN
[Pattern]	LIMITS OF ASPHALT FULL DEPTH RECLAMATION

SURVEY PROVIDED BY:
BUCHANAN & HARPER, INC.
 735 WEST 11TH STREET
 PANAMA CITY, FL 32401
 PHONE: (850) 763-7427

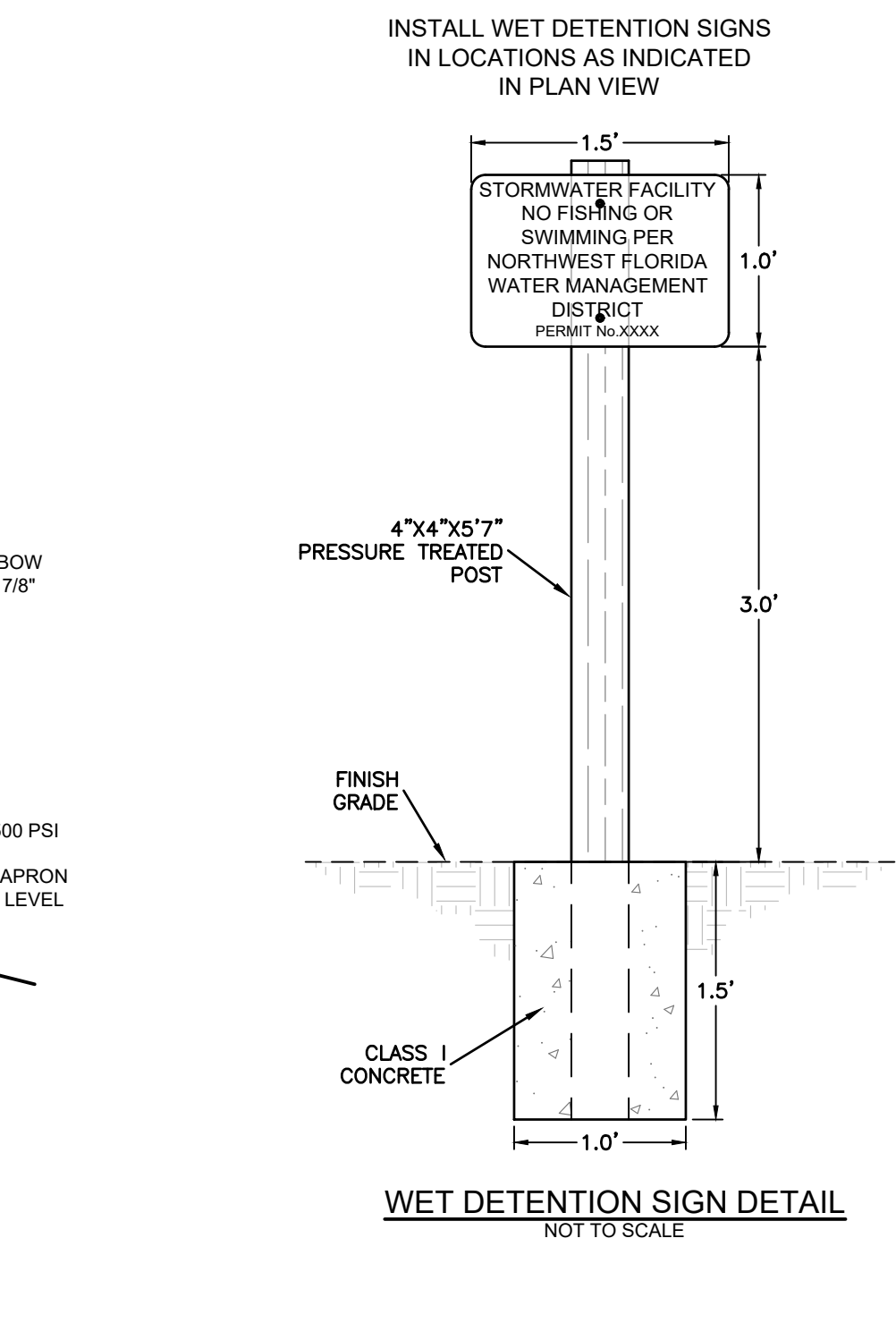
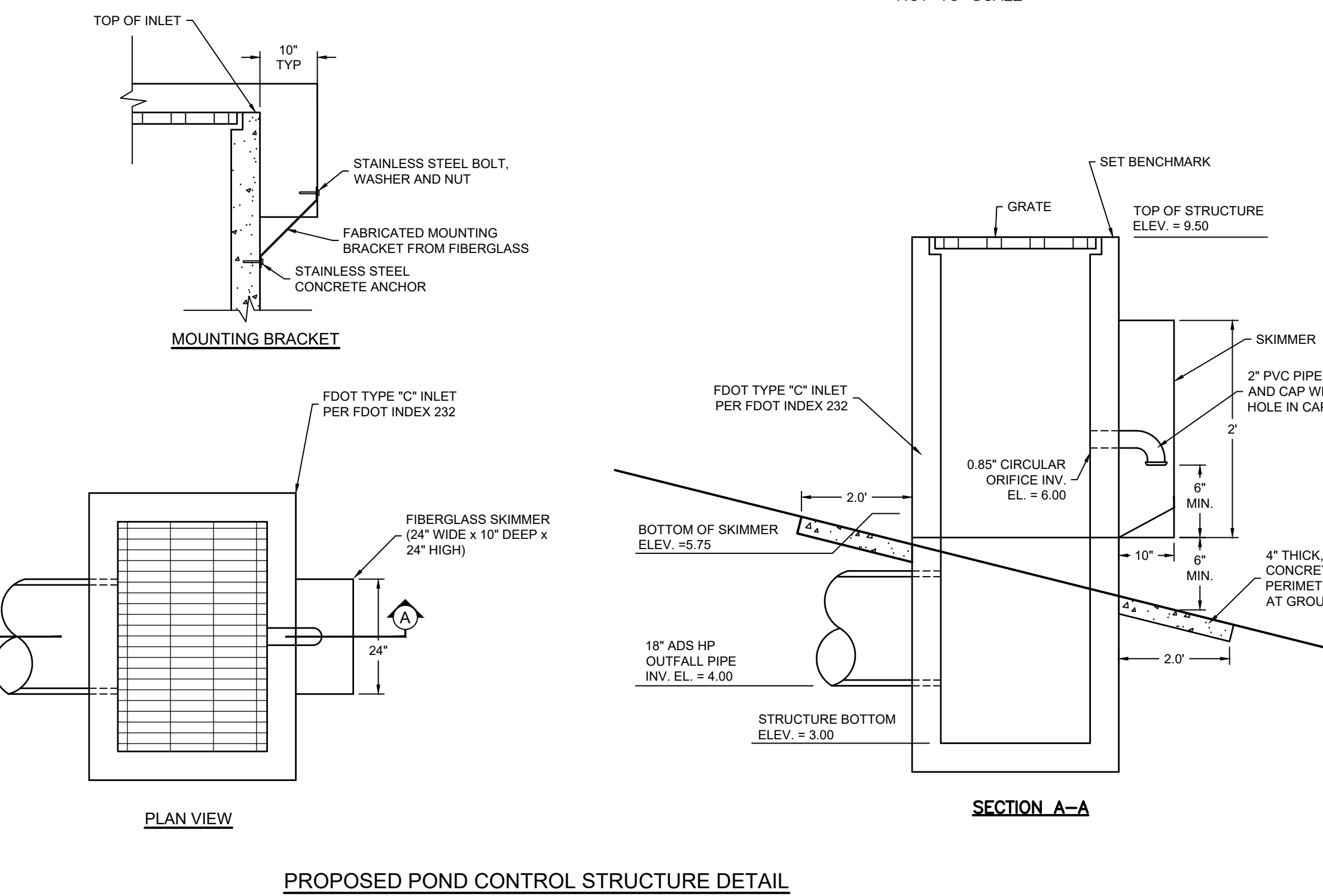
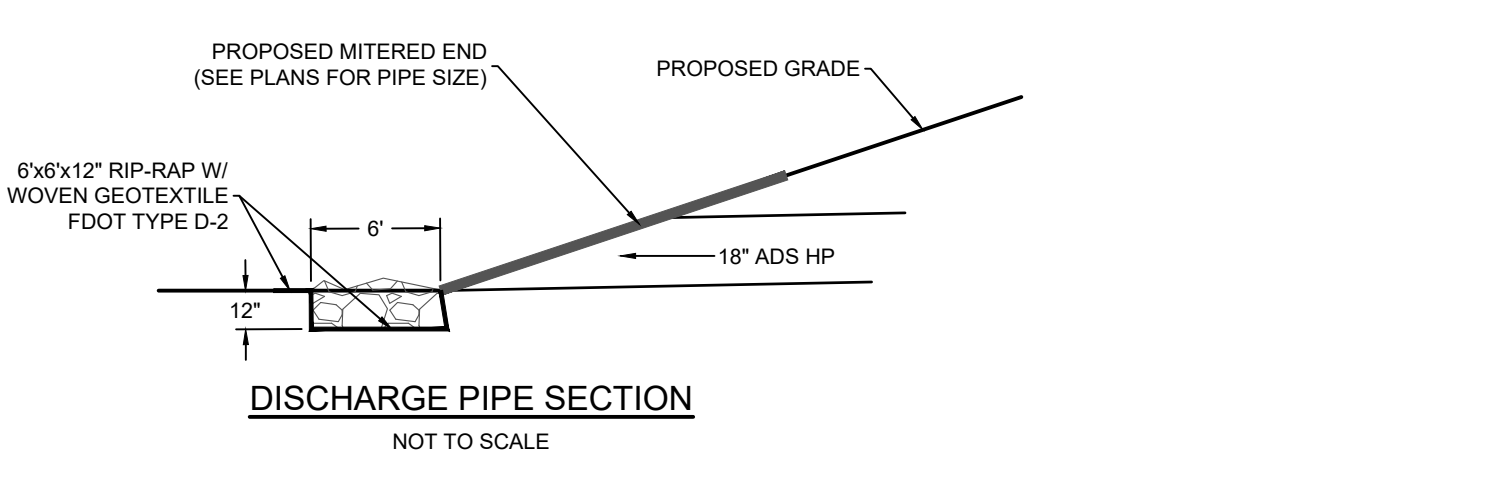
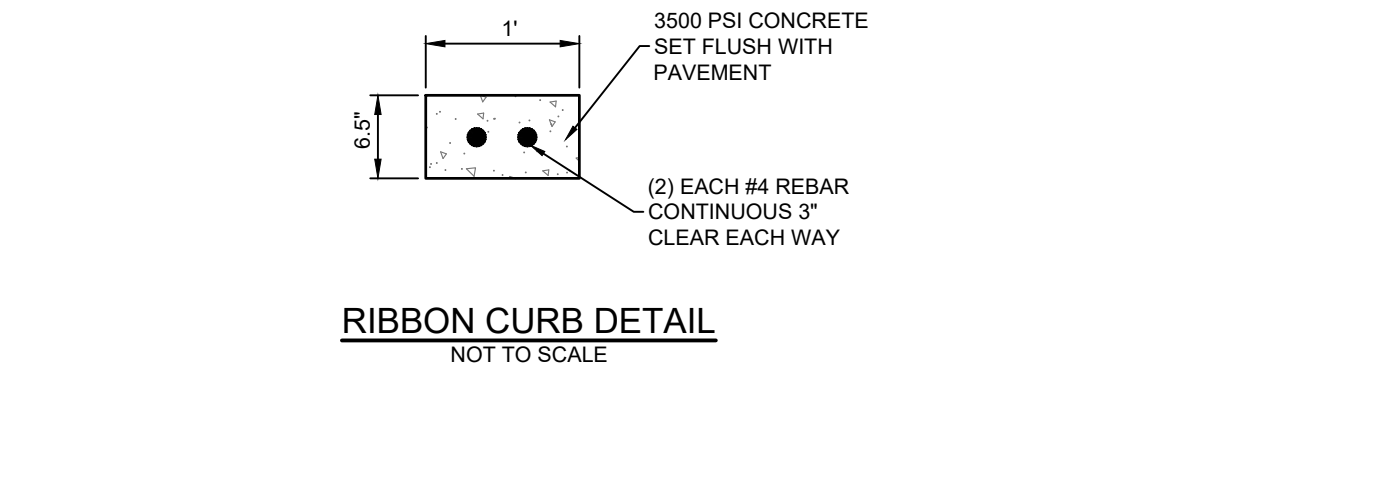
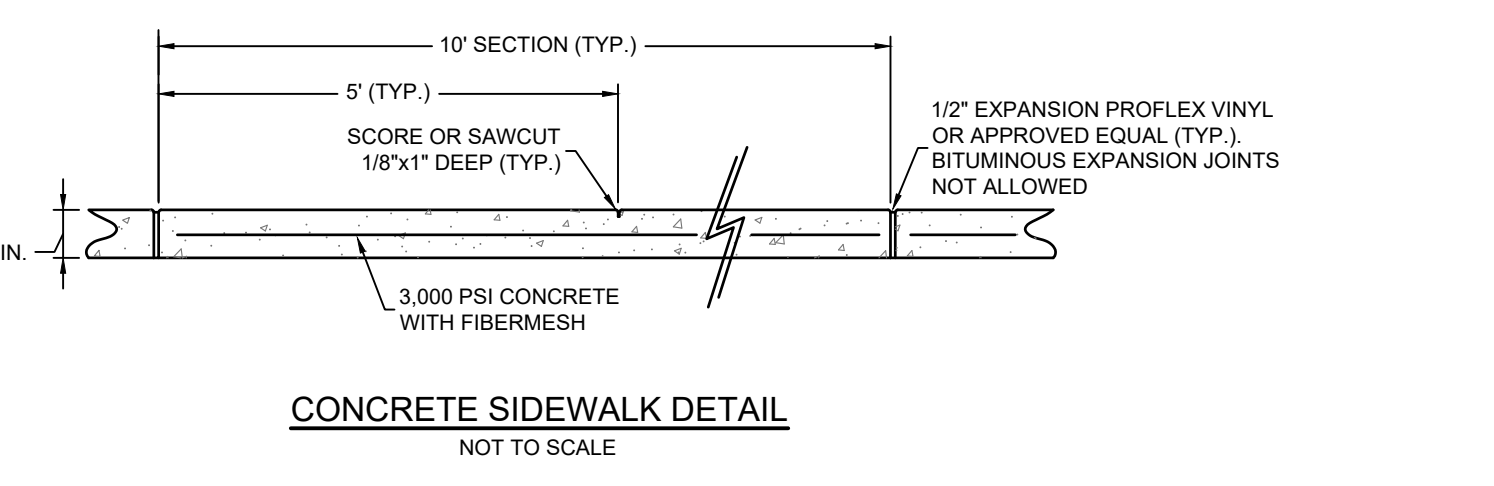
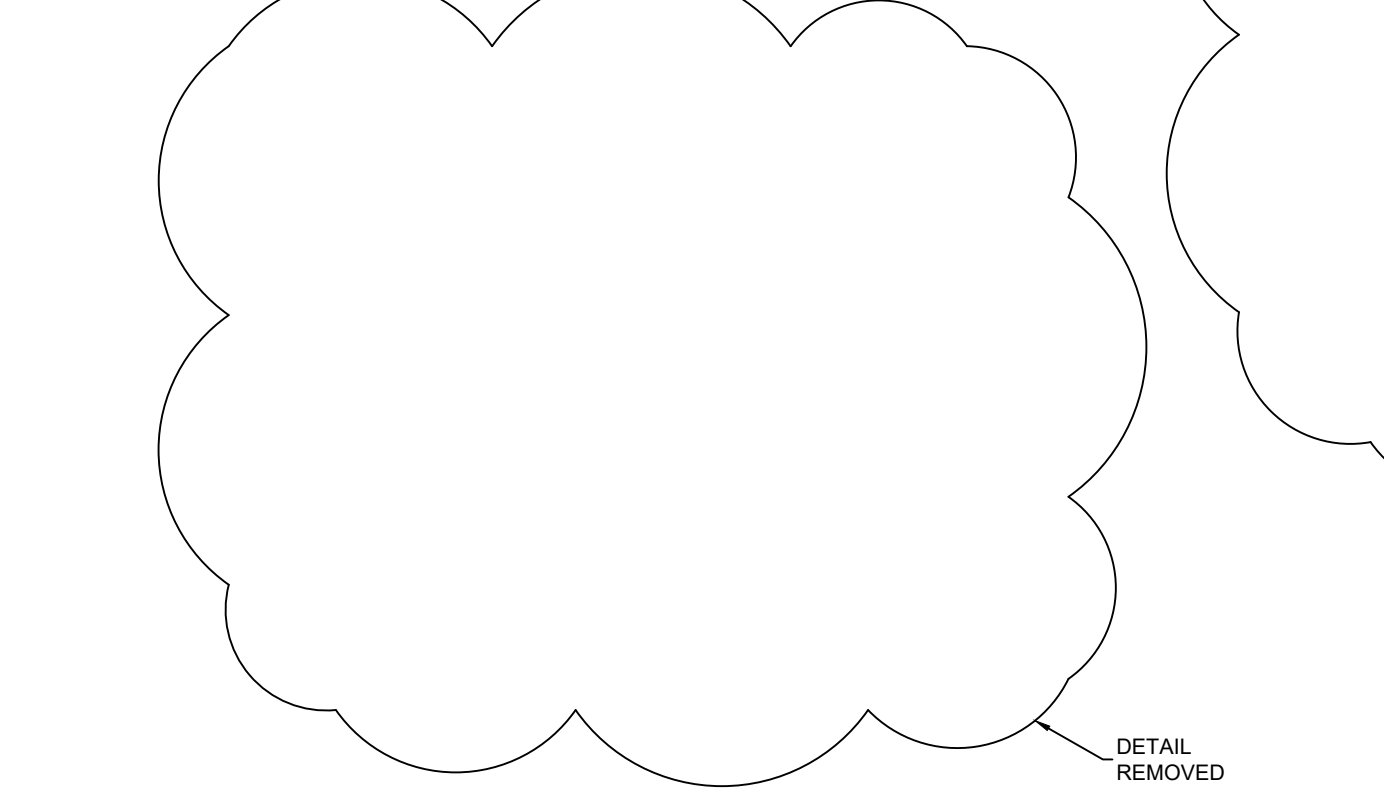
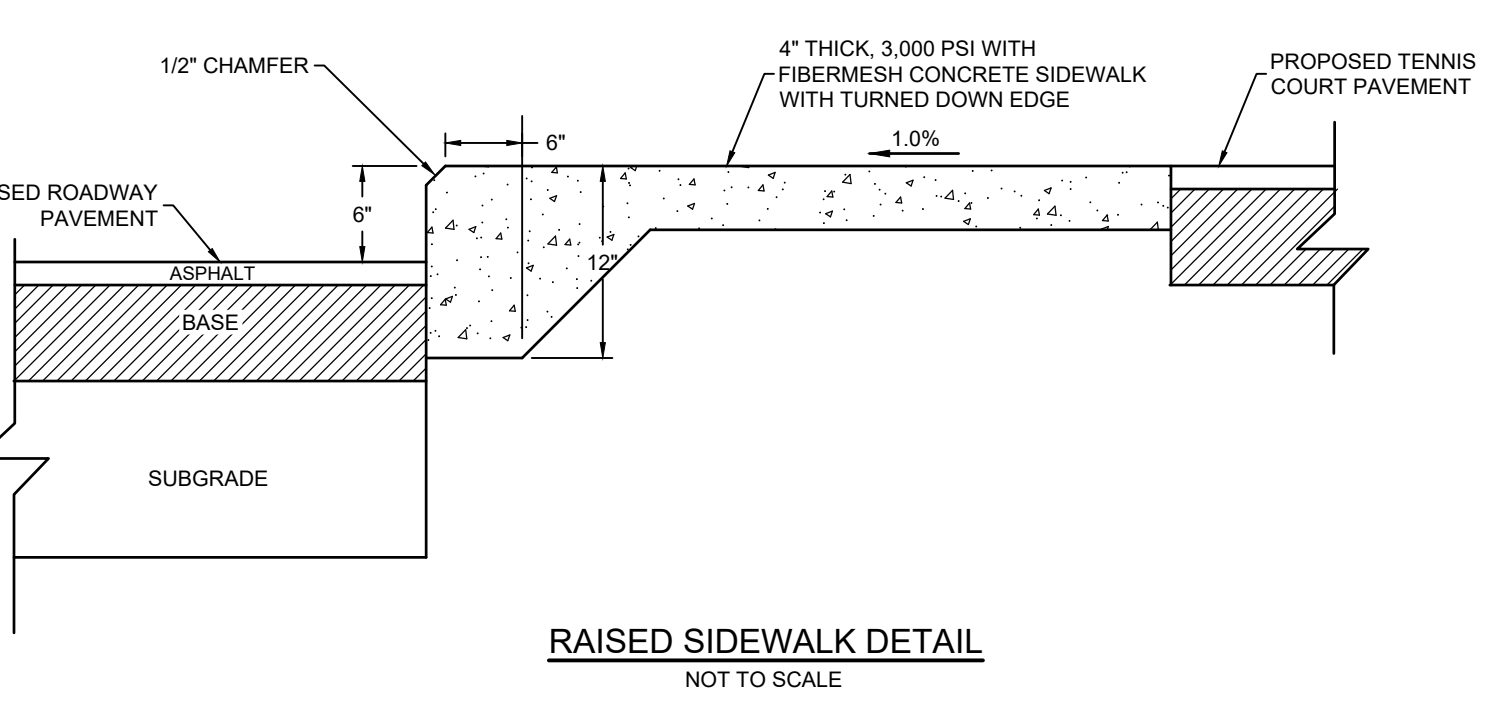
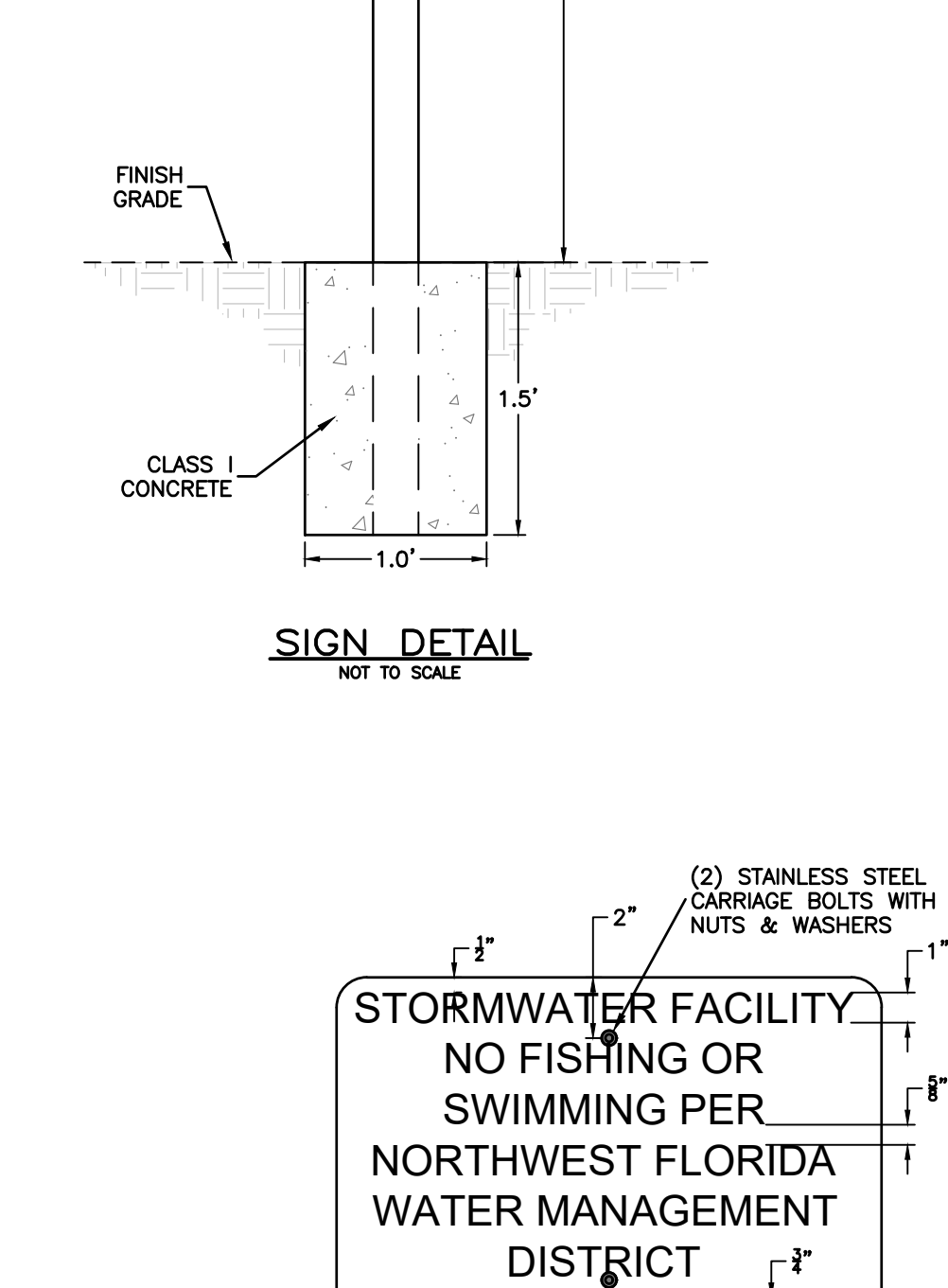
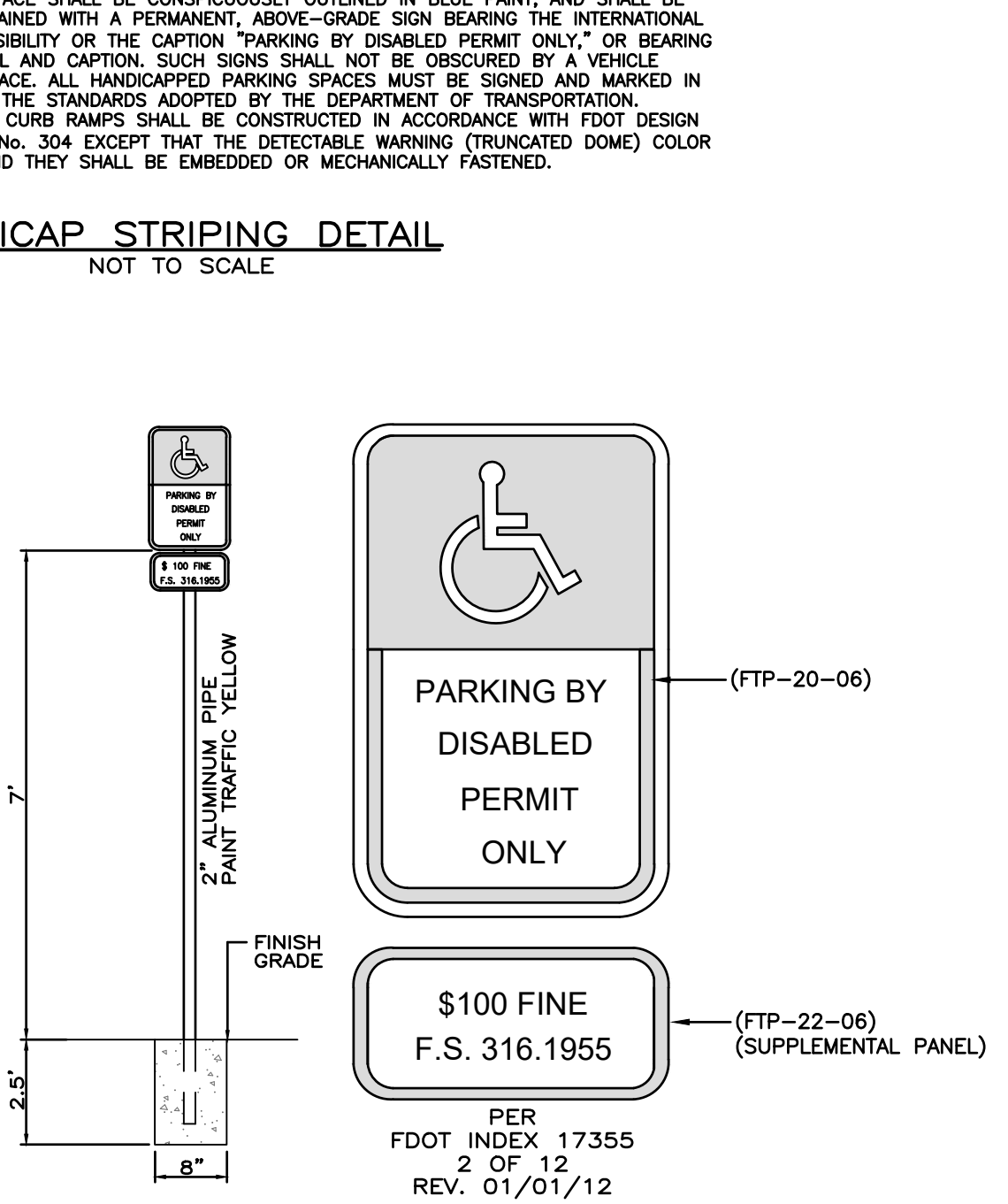
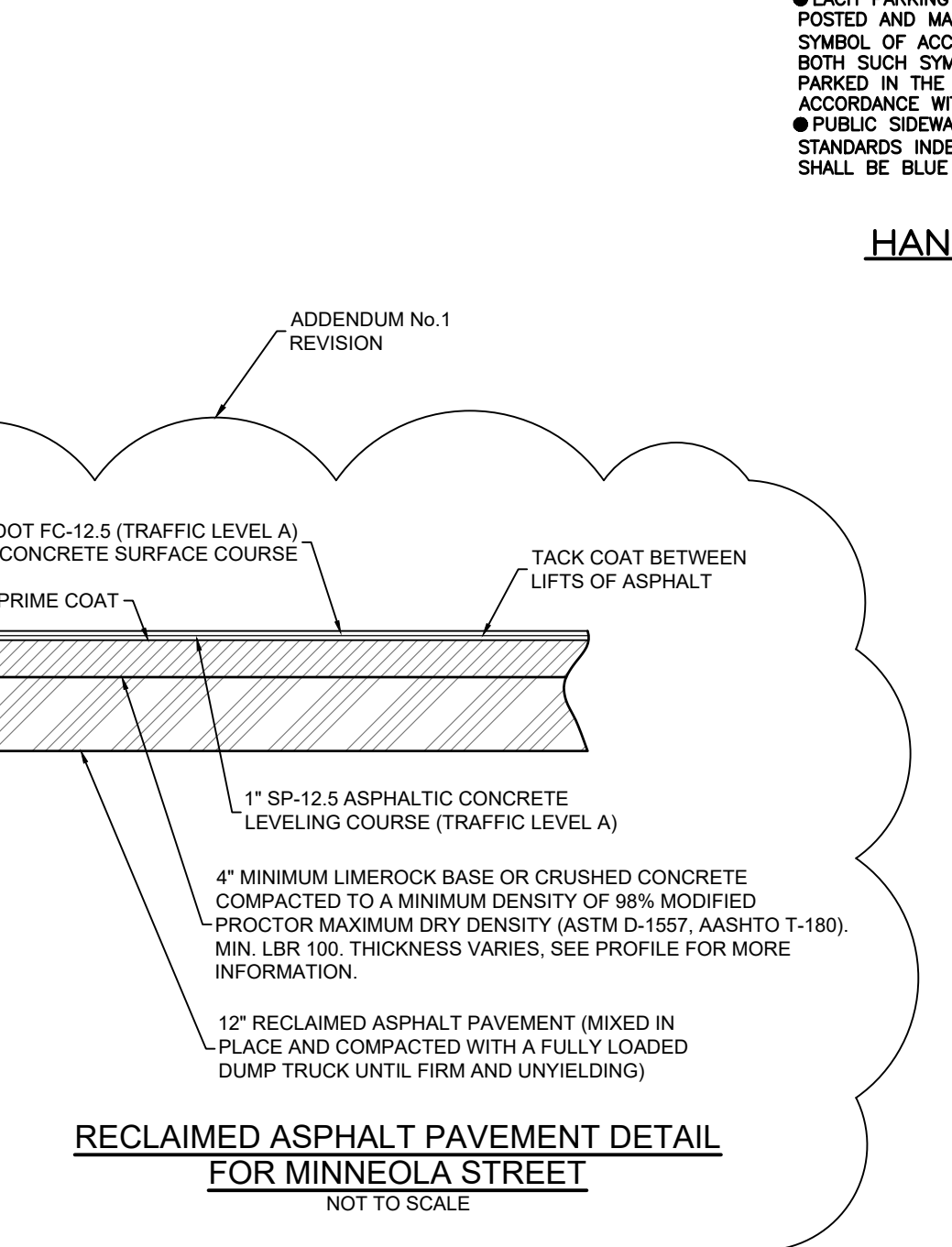
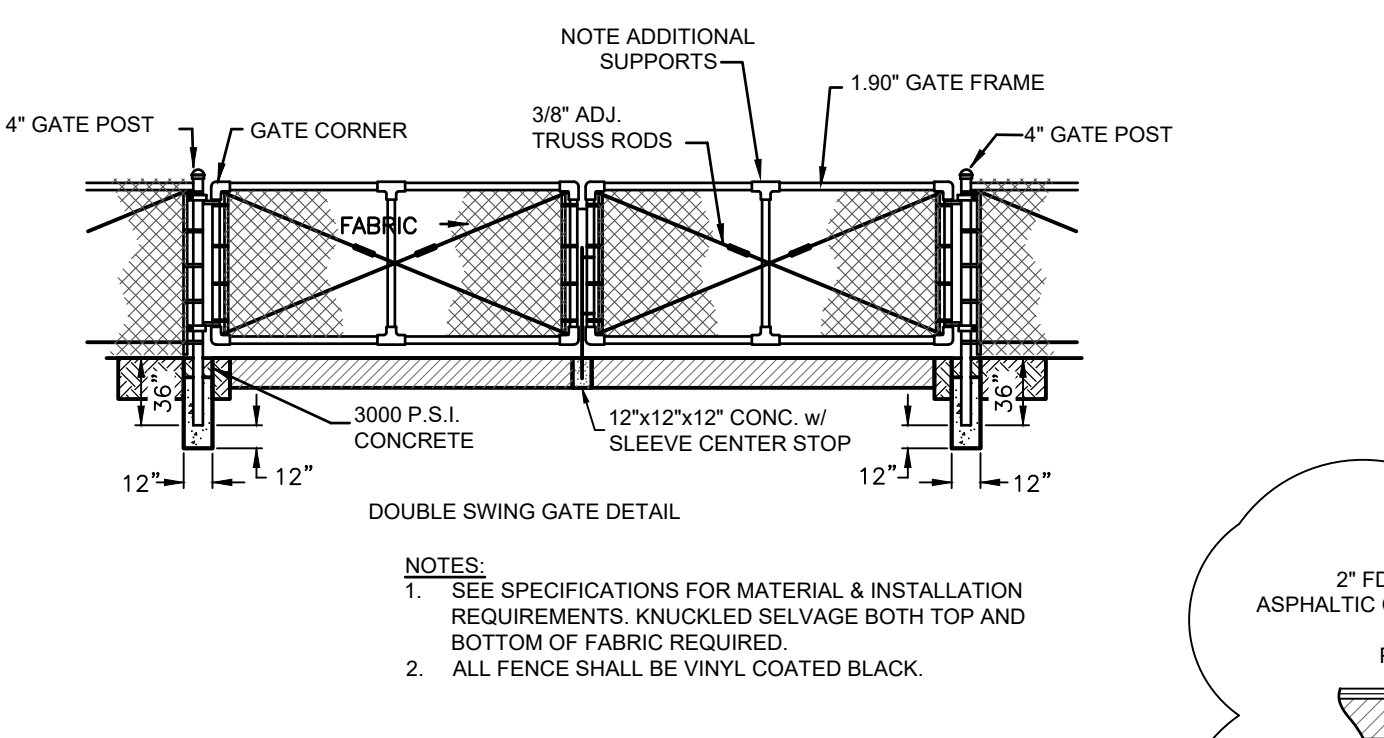
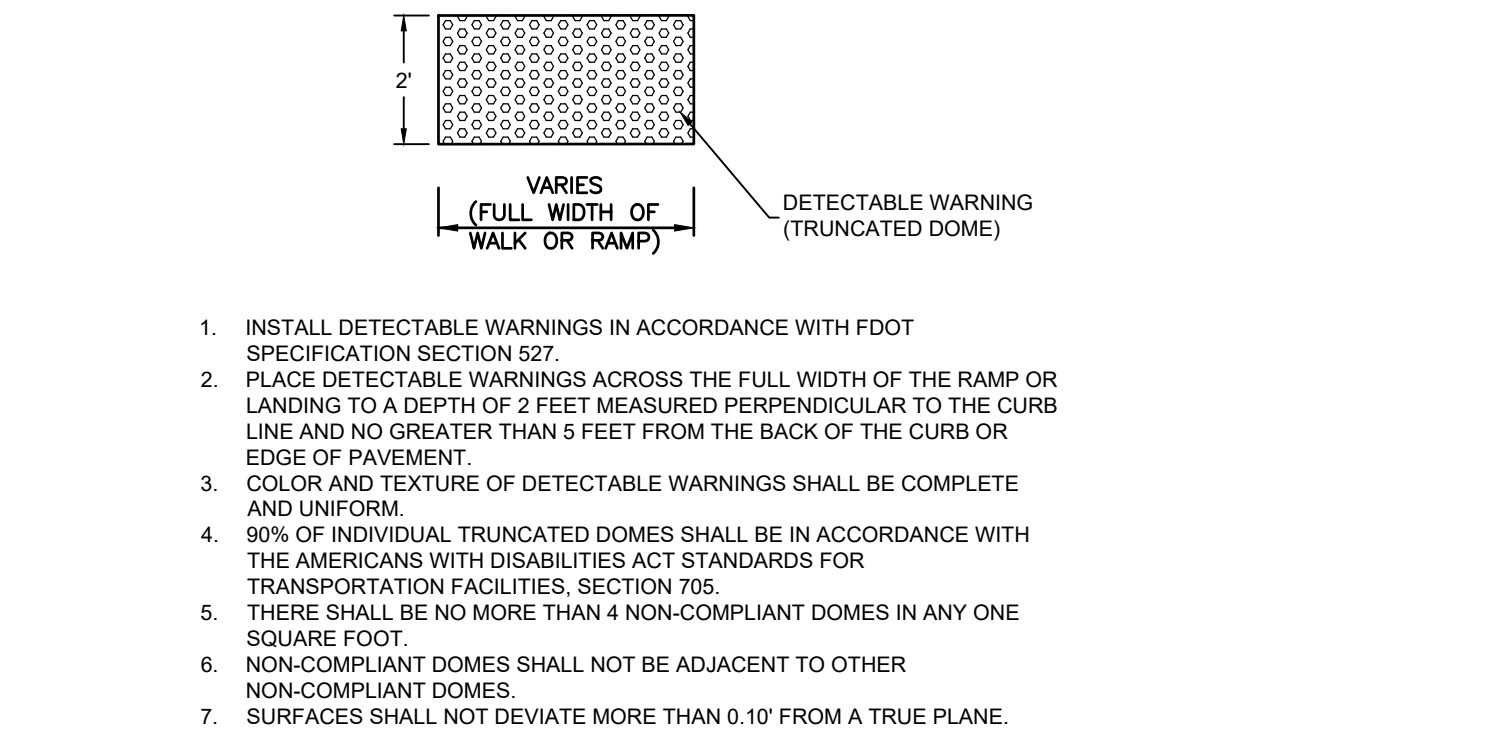
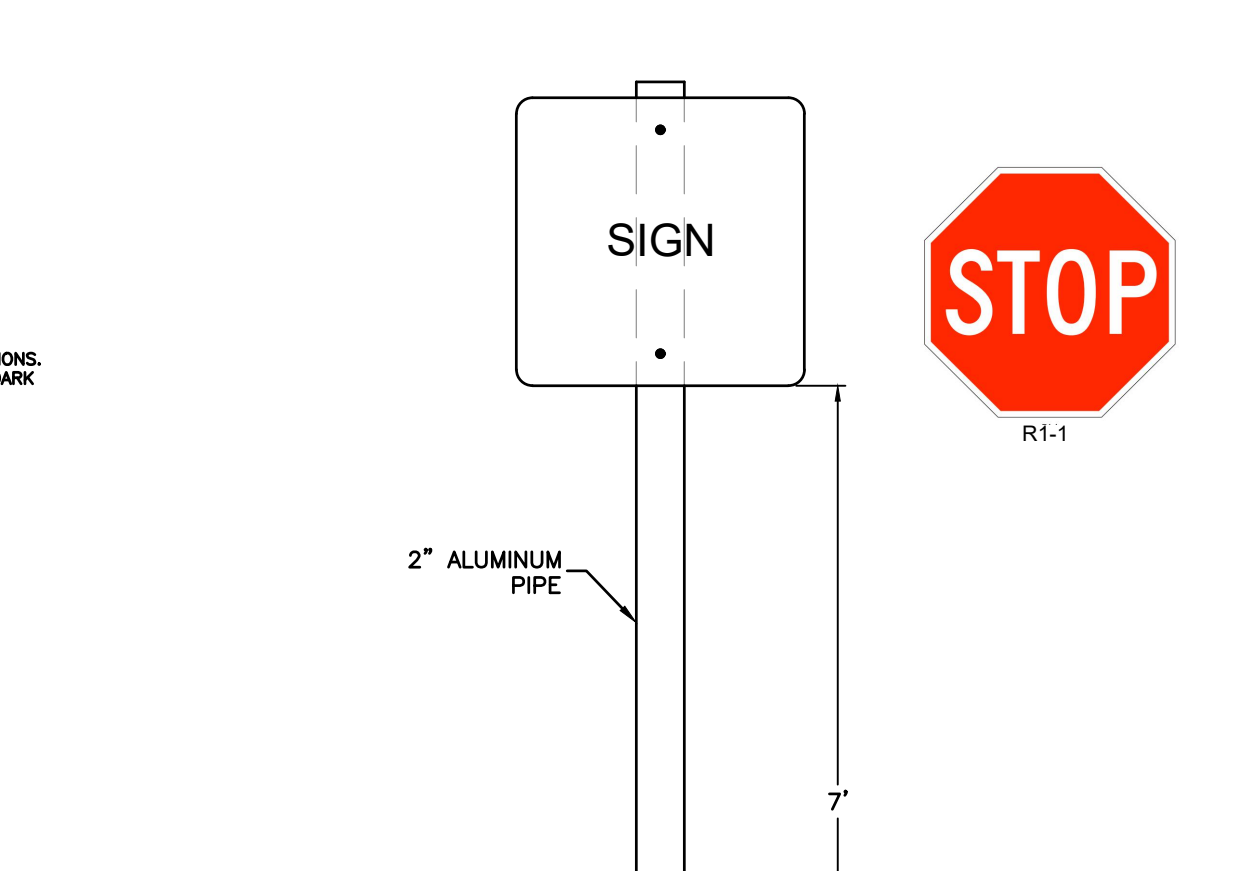
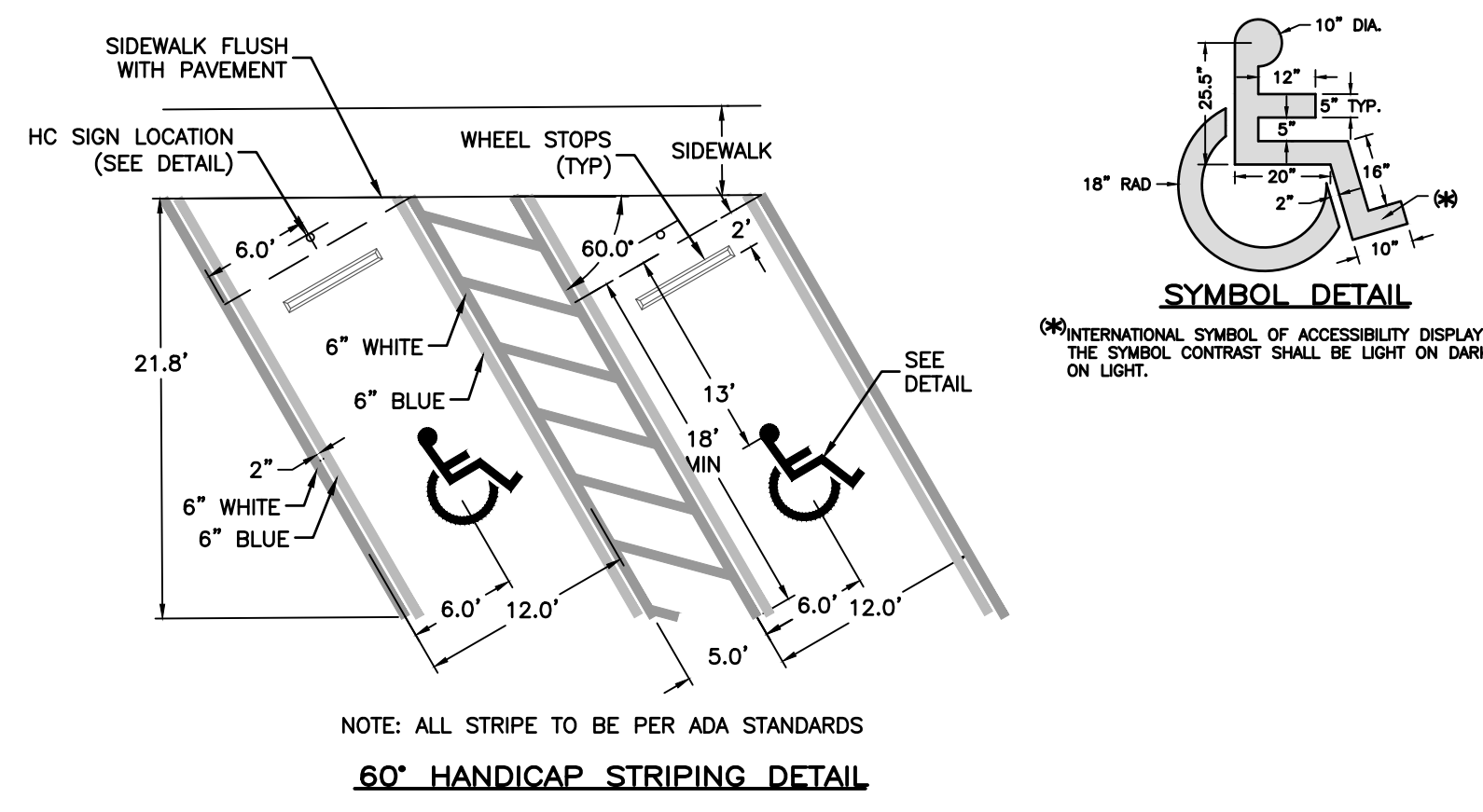
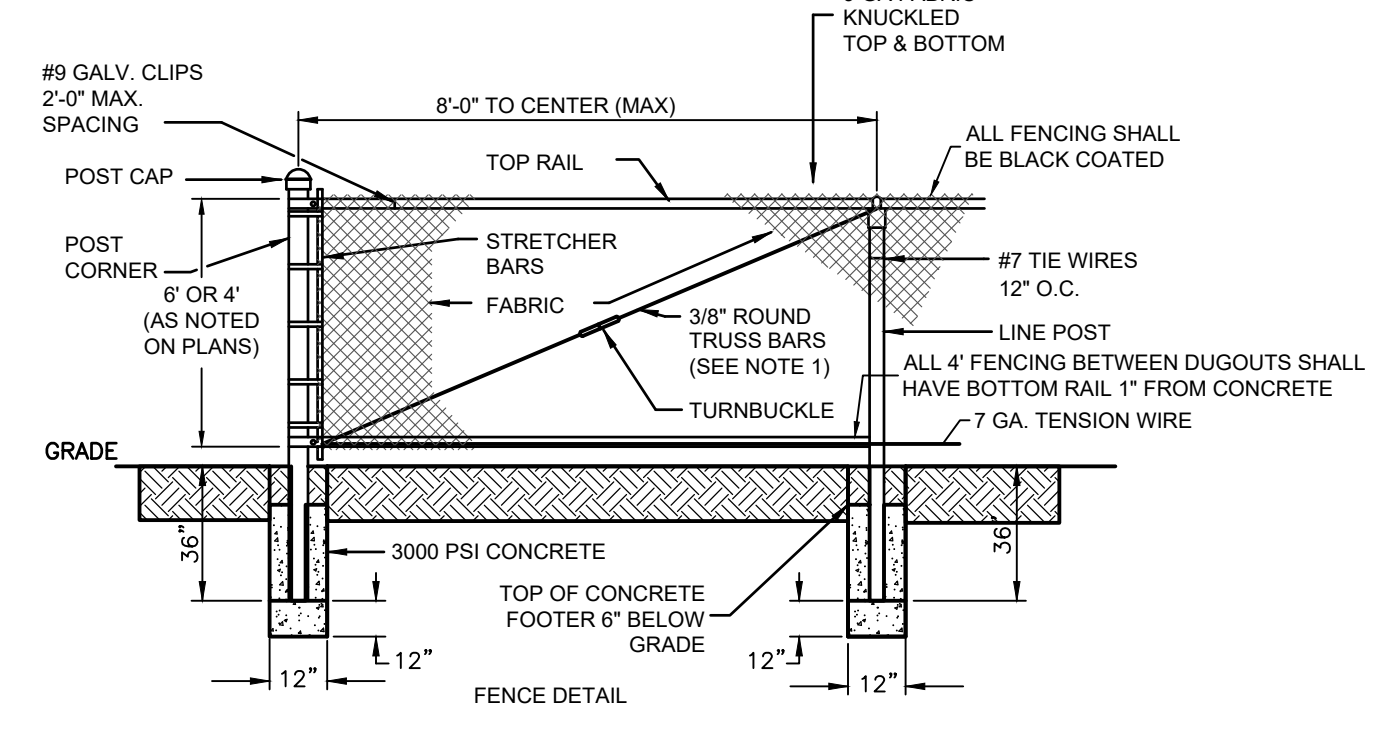
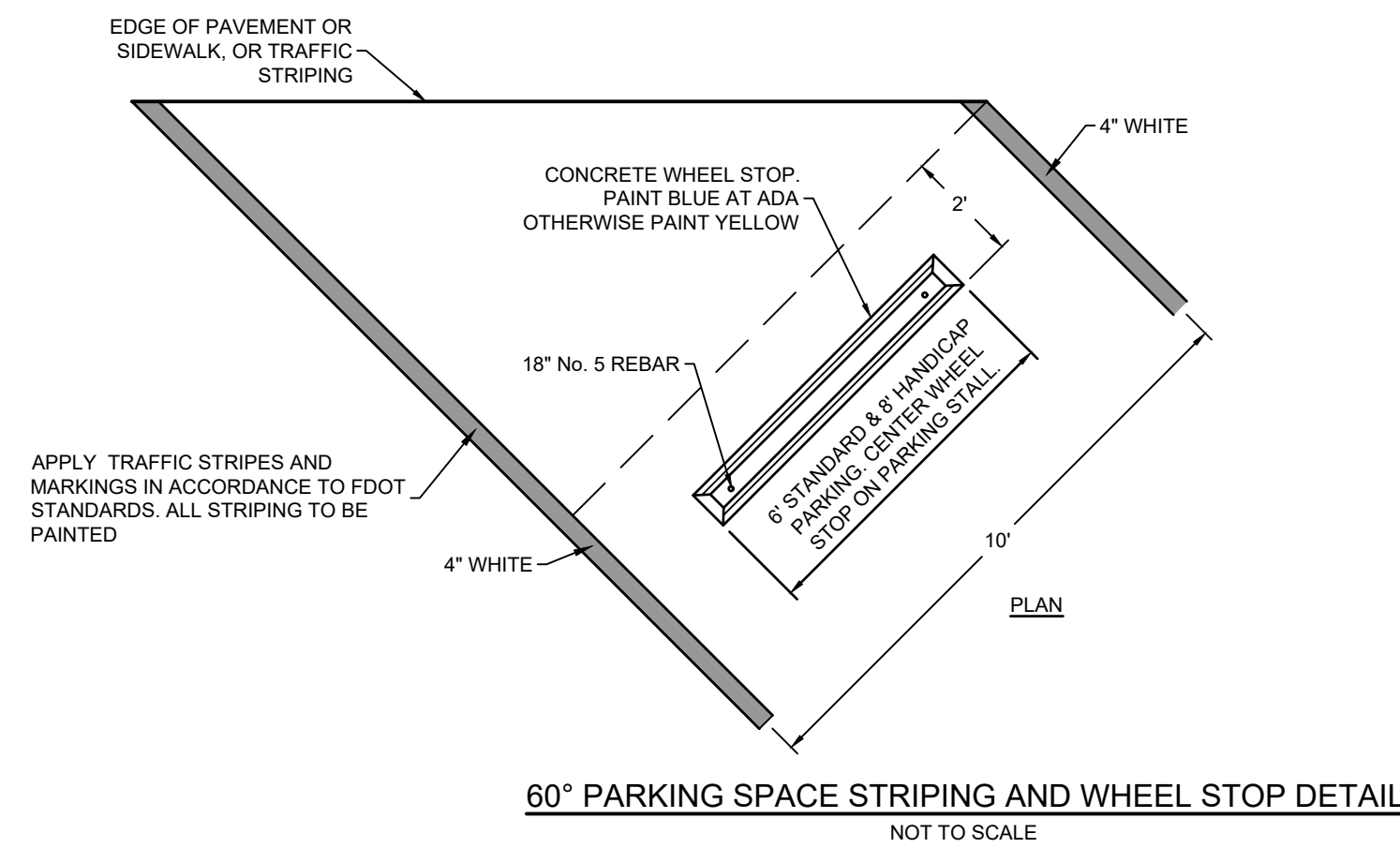
REV	DATE	BY	REVISIONS	SCALE	AS NOTED
1	02/21/22	CBF	ADDENDUM No.1- CLARIFICATION OF MINNEOLA ST.	DESIGNED BY:	CBF
				DRAWN BY:	JAH
				REVIEWED BY:	CBF
				ISSUE DATE:	FEBRUARY 2022
				ACAD FILE NAME:	26018e1-exist-demo.dwg

PANHANDLE ENGINEERING, INC.
 ENVIRONMENTAL ENGINEERS • CIVIL ENGINEERS • LAND PLANNERS
 600 Ohio Avenue Lynn Haven, Florida 32444
 (850) 763-5200 www.panhandleengineering.com

EXISTING CONDITIONS AND DEMOLITION PLAN
GORE PARK IMPROVEMENTS
CALLAWAY, FLORIDA

James H. Slonina, P.E. 39197
 Christopher B. Forehand, P.E. 58028
 Stephen E. Price, P.E. 71646
 J. Doug Crook, P.E. 66556

SHEET NUMBER	C1
PROJECT NUMBER	26018



Date: Monday, February 21, 2023 10:48:26 AM EDT. Jacob Foster, File: P:\26018 Gore Park Callaway\1\DWG\CD\Detail\Construction\26018.dwg

REV	DATE	BY	REVISIONS
1	02/21/22	CBF	ADDENDUM No.1

SCALE:	AS NOTED
DESIGNED BY:	CBF
DRAWN BY:	JAH
REVIEWED BY:	CBF
ISSUE DATE:	FEBRUARY 2022
ACAD FILE NAME:	26018e1.dwg

NOT	RELEASED FOR CONSTRUCTION BY:	DATE:
-----	-------------------------------	-------

PANHANDLE ENGINEERING, INC.
ENVIRONMENTAL ENGINEERS • CIVIL ENGINEERS • LAND PLANNERS
600 Ohio Avenue Lynn Haven, Florida 32444
(850) 763-5200 www.panhandleengineering.com

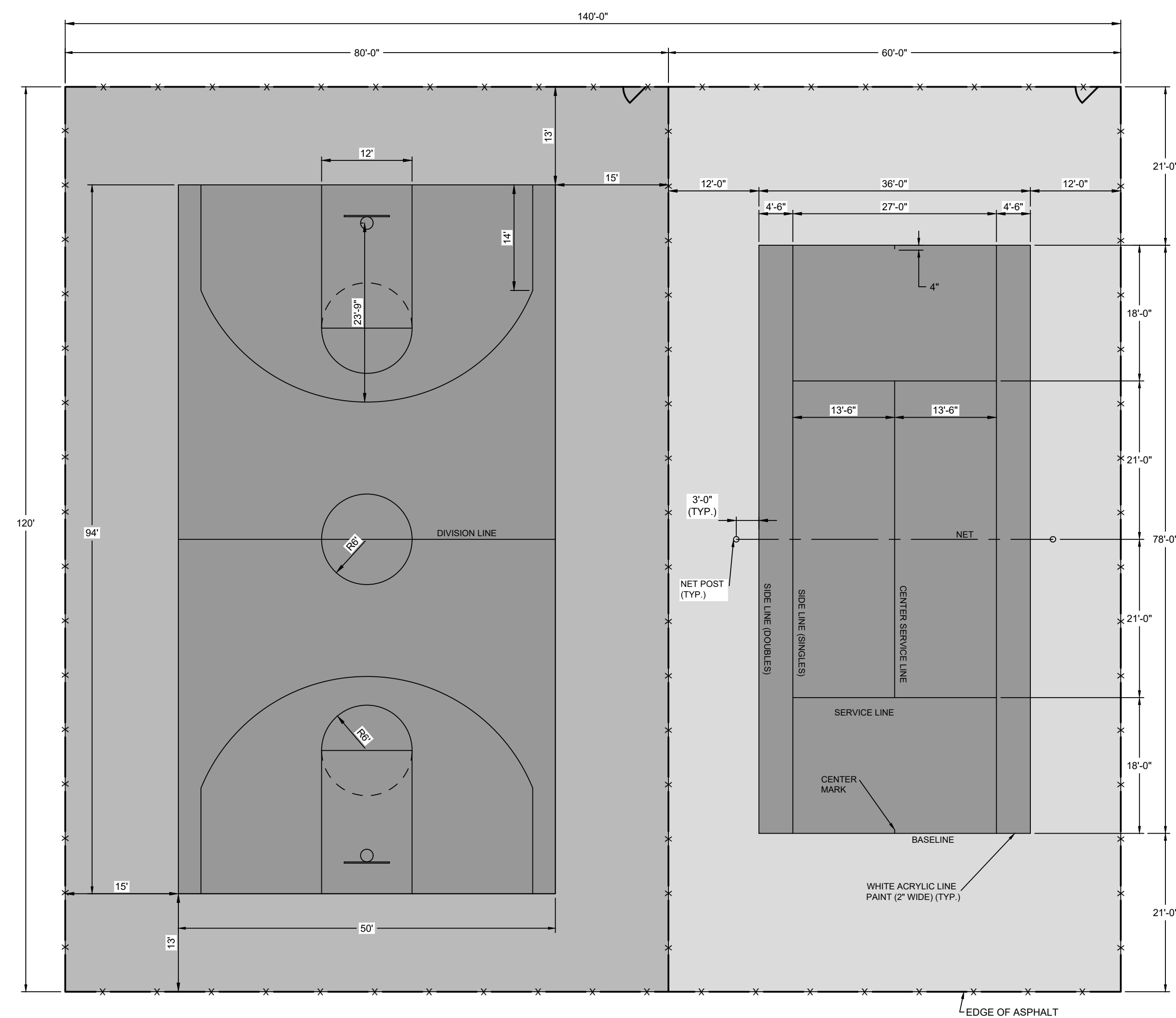
CONSTRUCTION DETAILS
GORE PARK IMPROVEMENTS
CALLAWAY, FLORIDA

James H. Slonina, P.E. 39197
Christopher B. Forehand, P.E. 58028
Stephen E. Price, P.E. 71646
J. Doug Crook, P.E. 66556

CHRISTOPHER B. FOREHAND, P.E.
NO. 58028
STATE OF FLORIDA
PROFESSIONAL ENGINEER

SHEET NUMBER	D1
PROJECT NUMBER	26018

26018 GORE PARK IMPROVEMENTS CONSTRUCTION DETAILS Sheet D1



TENNIS COURT LEGEND

- DARK GREEN (OR COLOR AS SELECTED BY OWNER) TWO TONE PLEXIPAVE BASE
- BRICK RED (OR COLOR AS SELECTED BY OWNER) TWO TONE PLEXIPAVE BASE

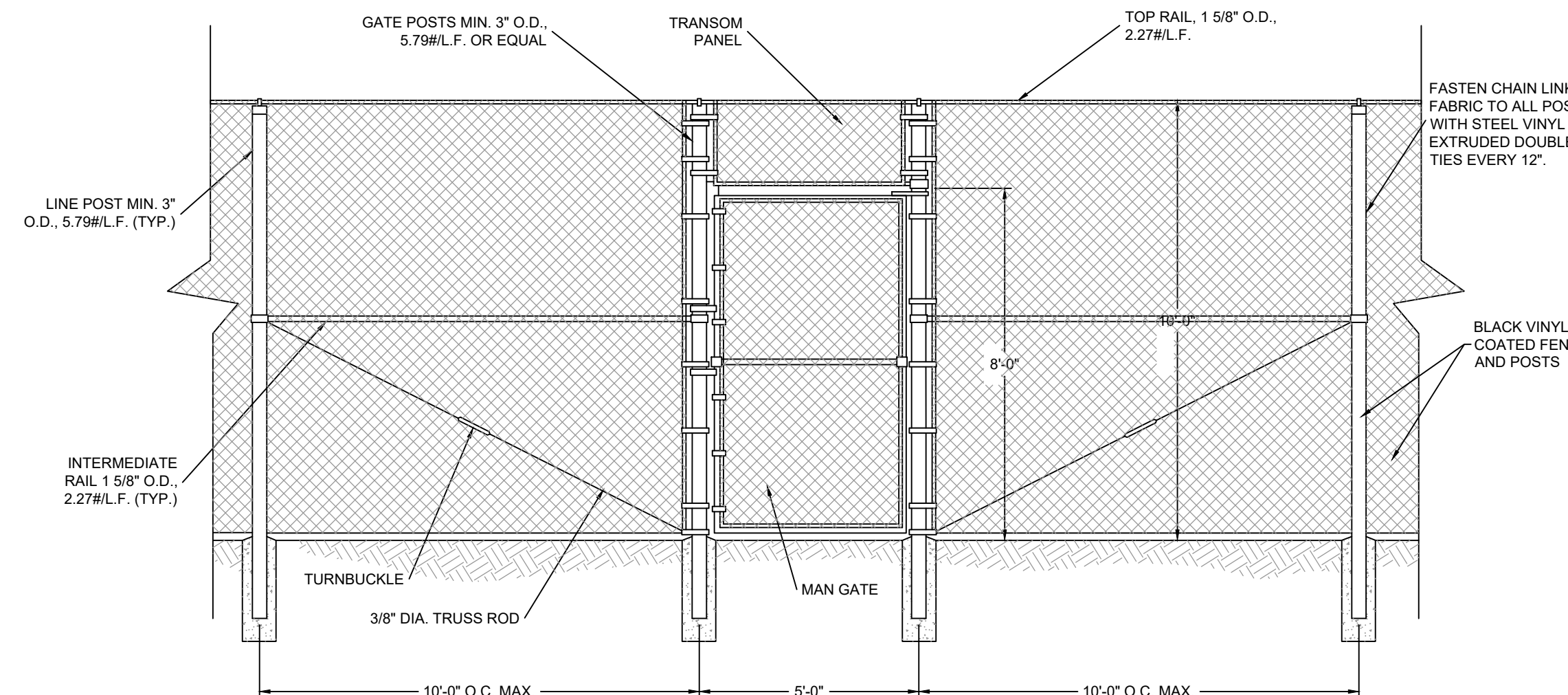
NOTES:

1. ALL MEASUREMENTS FOR COURT MARKINGS ARE TO THE OUTSIDE OF LINES EXCEPT FOR THOSE INVOLVING THE CENTER SERVICE LINE WHICH IS EQUALLY DIVIDED BETWEEN THE LEFT AND RIGHT SERVICE COURTS.
2. ALL COURT MARKINGS ON BOTH COURTS SHALL BE 2" WIDE.
3. CONTRACTOR SHALL HAVE A PRE-APPROVED GEOTECHNICAL TESTING LAB PERFORM 8 COMPACTION TESTS FOR BASE AND SUBGRADE FOR THE TENNIS COURTS. LOCATIONS WILL BE DETERMINED BY THE ENGINEER. (FOUR (4) FOR BASE AND FOUR (4) FOR SUBGRADE).

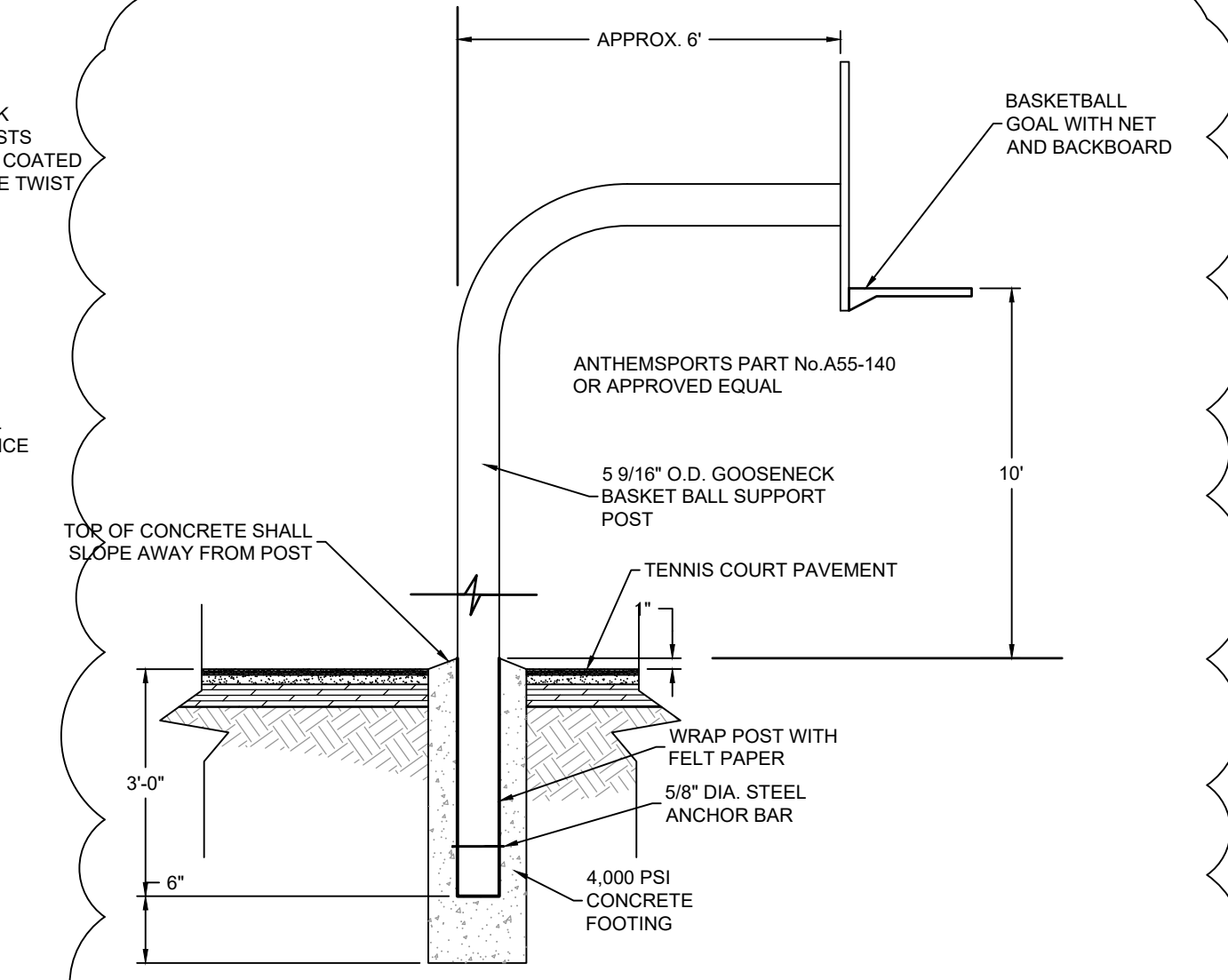
TENNIS COURT AND BASKET BALL COURT DIMENSIONS & MARKINGS DETAIL
NOT TO SCALE

NOTES:

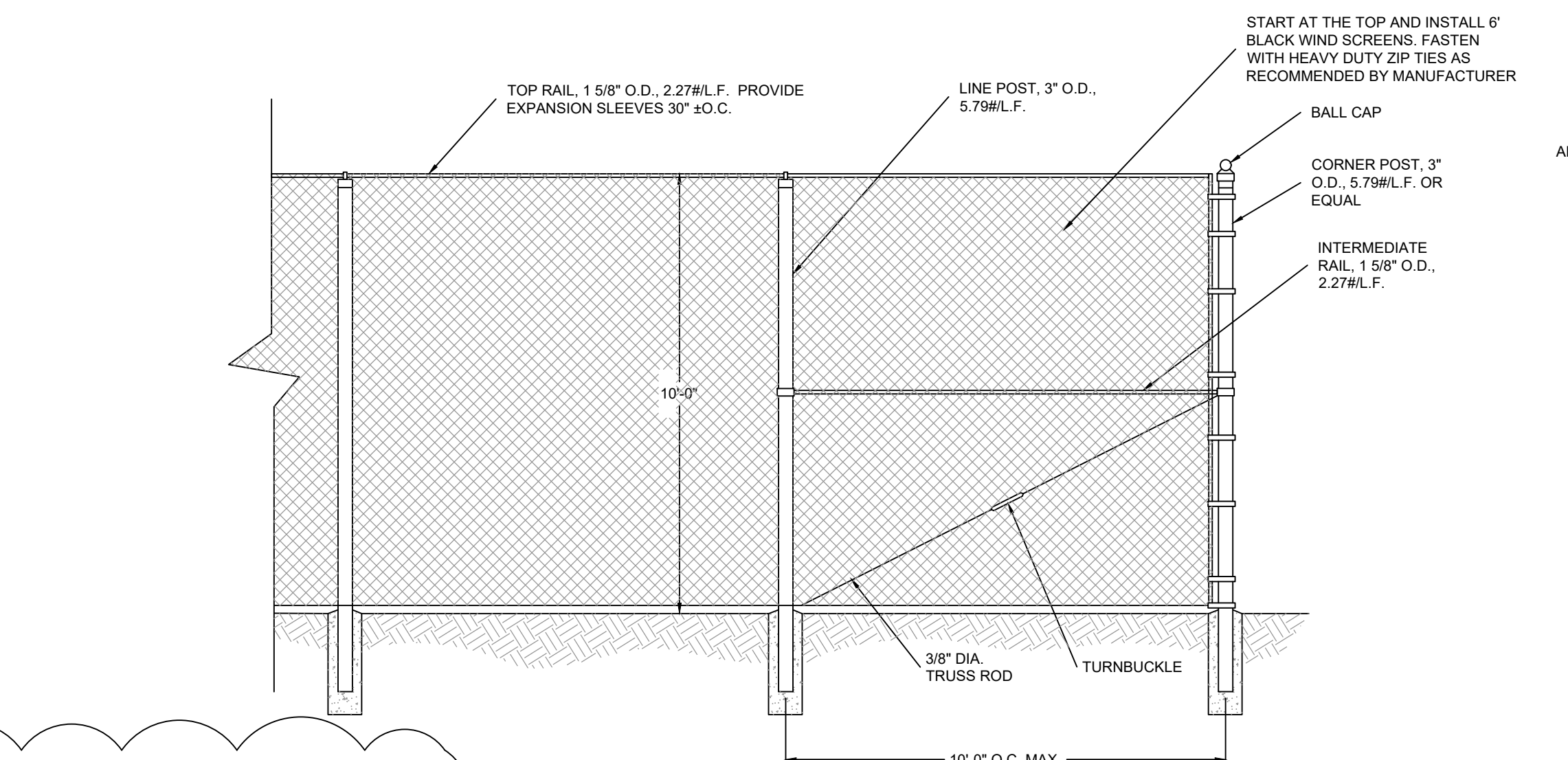
1. FENCE SHALL BE 10' HIGH, 11 GAUGE 1 3/4" MESH CHAIN LINK.
 2. FENCE POSTS SHALL BE A MINIMUM OF SCHEDULE 40 WEIGHT REGARDLESS OF CROSS SECTIONAL CONFIGURATION.
 3. FENCE SHALL BE CHAIN LINK WITH BLACK GALVANIZED VINYL COATING PER ASTM A392.
 4. REINFORCING TENSION WIRE IS TO HAVE A MINIMUM TENSILE STRENGTH OF 80,000 P.S.I.
 5. HOG RINGS OF .110" DIAMETER ALUMINUM WIRE SHALL BE USED TO ATTACH FENCE TO REINFORCING TENSION WIRE 2'-0" O.C.
 6. TIE WIRE OF .144" DIAMETER ALUMINUM ALLOY SHALL BE USED TO ATTACH FENCE TO TOP RAIL AND INTERMEDIATE POSTS AT 14" O.C.
 7. TENSION BARS OF 1/4" x 3/4" OR 3/16" x 3/4" GALVANIZED STEEL WOVEN THROUGH THE FENCE ARE TO BE FASTENED TO TERMINAL AND GATE POSTS WITH 11 GAUGE x 1" WIDE GALVANIZED STEEL BANDS AT 14" O.C.
 8. SELVAGE TOP AND BOTTOM IS TO BE KNUCKLED.
 9. ALL FERROUS METAL PARTS ARE TO BE HOT DIPPED GALVANIZED AFTER FABRICATION.
 10. CONCRETE FOOTINGS SHALL BE A MINIMUM 9" DIAMETER. CONCRETE SHALL CONFORM TO ASTM C94, MAXIMUM 3/4" AGGREGATE, MINIMUM 3,000 P.S.I. COMPRESSIVE STRENGTH (FC) AT 28 DAYS.
 11. THE FENCE SHALL BE FASTENED TO THE COURT SIDE OF ALL POSTS AND RAILS.
 12. THE BOTTOM OF THE FENCE SHALL BE 1" ABOVE THE FINISHED COURT SURFACE.
 13. THE FENCE SHALL HAVE A 9' HIGH WINDSCREEN INSTALLED ON ALL NEW FENCE SECTIONS AND SHALL BE REMOVABLE. MOUNT WINDSCREEN 12" FROM BOTTOM.
- MATERIAL SPECIFICATIONS**
 FABRIC: 100% LENO POLYPROPYLENE
 WINDBREAK: OPEN MESH-75% CLOSED MESH-95%
 WEIGHT PER SQUARE YARD: OPEN MESH 5.5-OZ. CLOSED MESH 7-OZ
 TENSILE STRENGTH: 299 X 204
 COLOR: BLACK
14. THE WINDSCREEN SHALL HAVE ANTI BLOW TABS AS WELL AS 6"x12" OPENINGS PLACED 5' TO 10' APART.



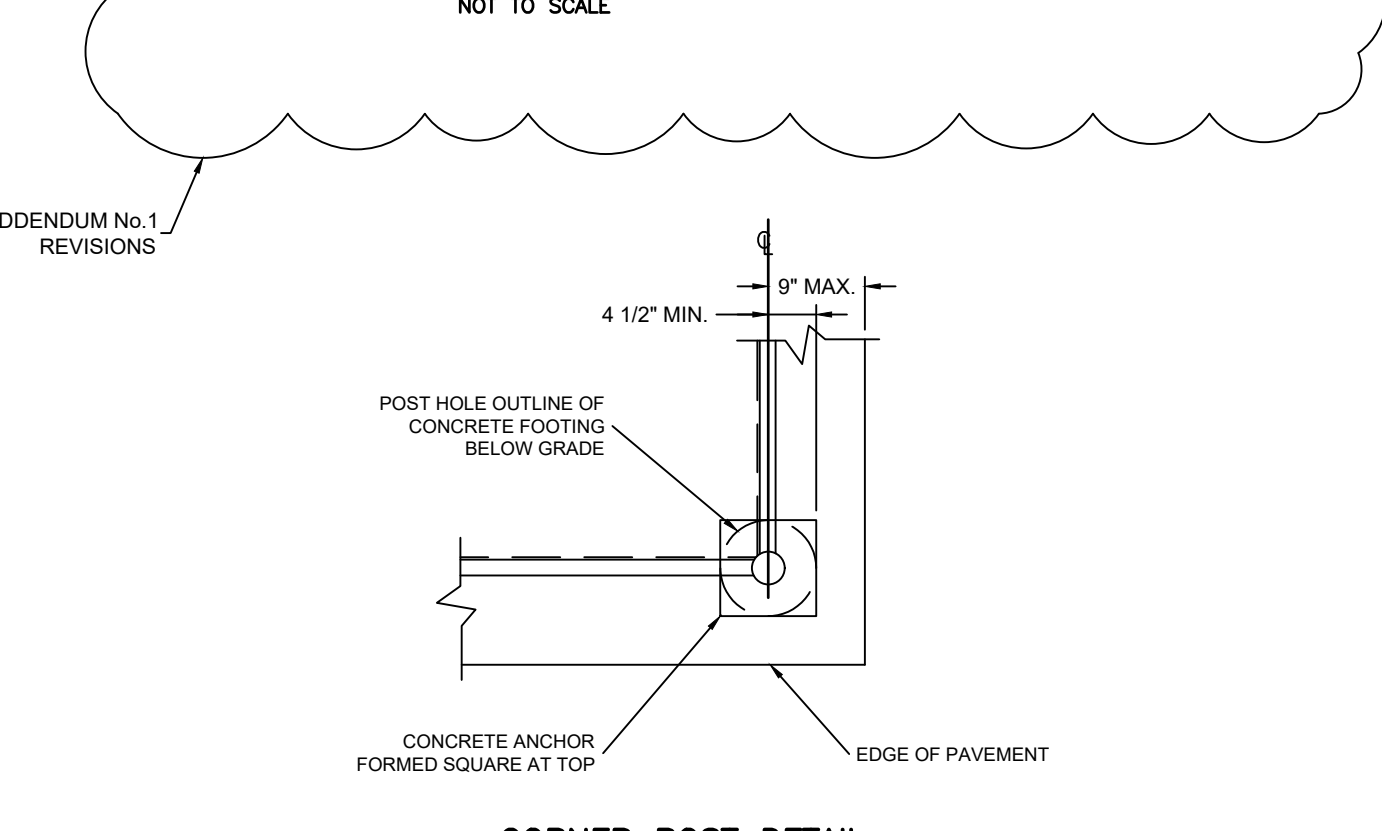
TYPICAL GATE ELEVATION
NOT TO SCALE



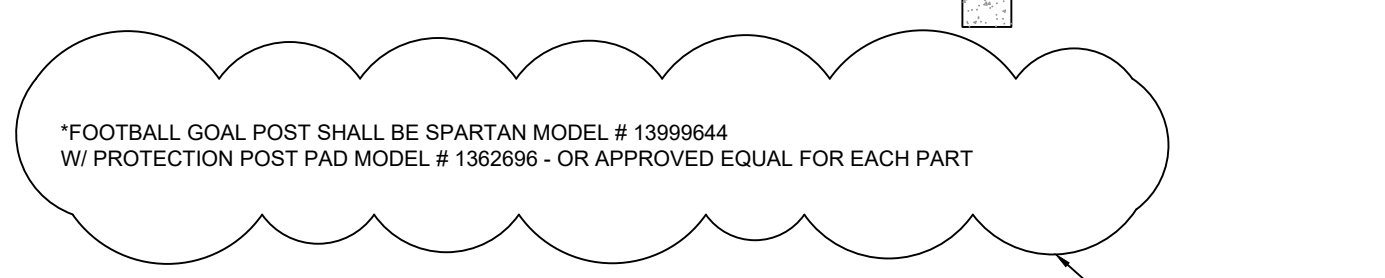
BASKETBALL GOAL POST ASSEMBLY
NOT TO SCALE



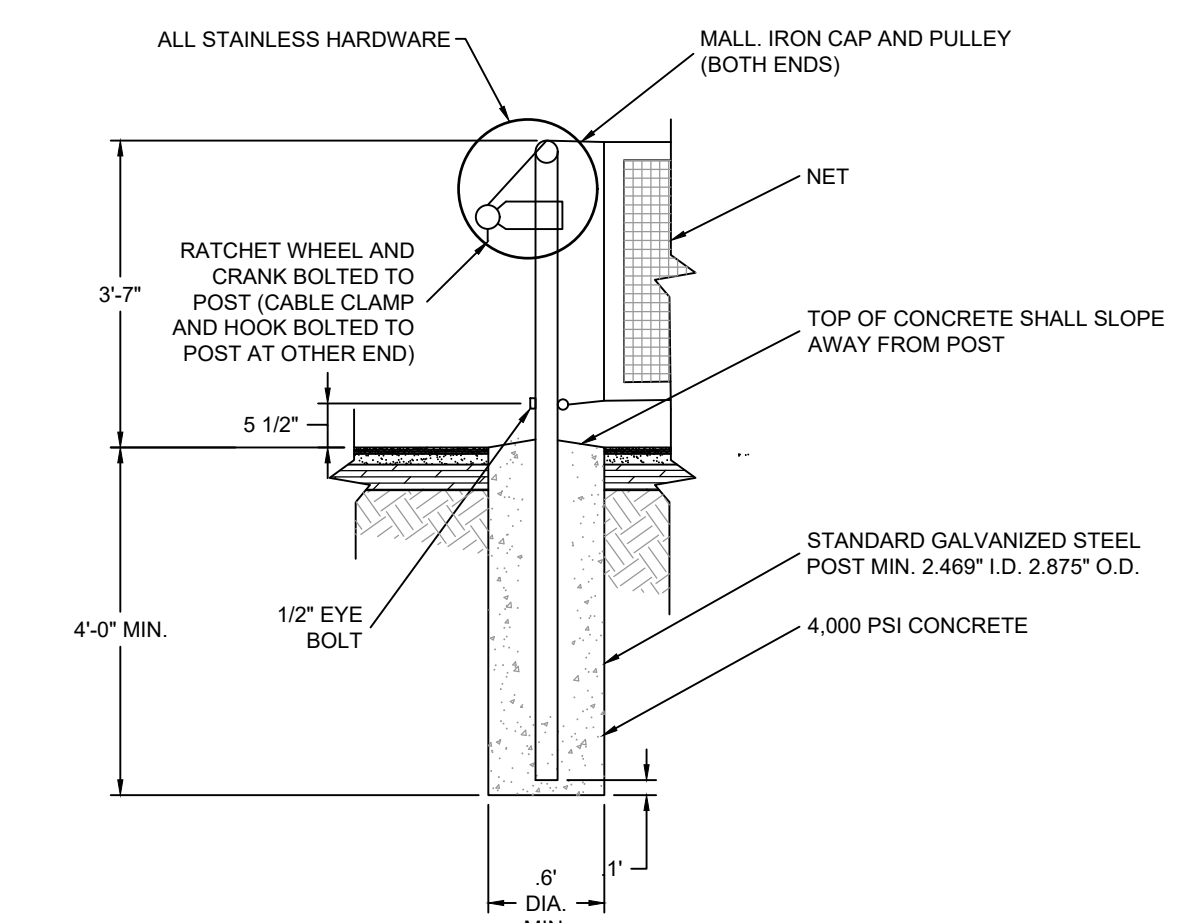
TYPICAL FENCE ELEVATION
NOT TO SCALE



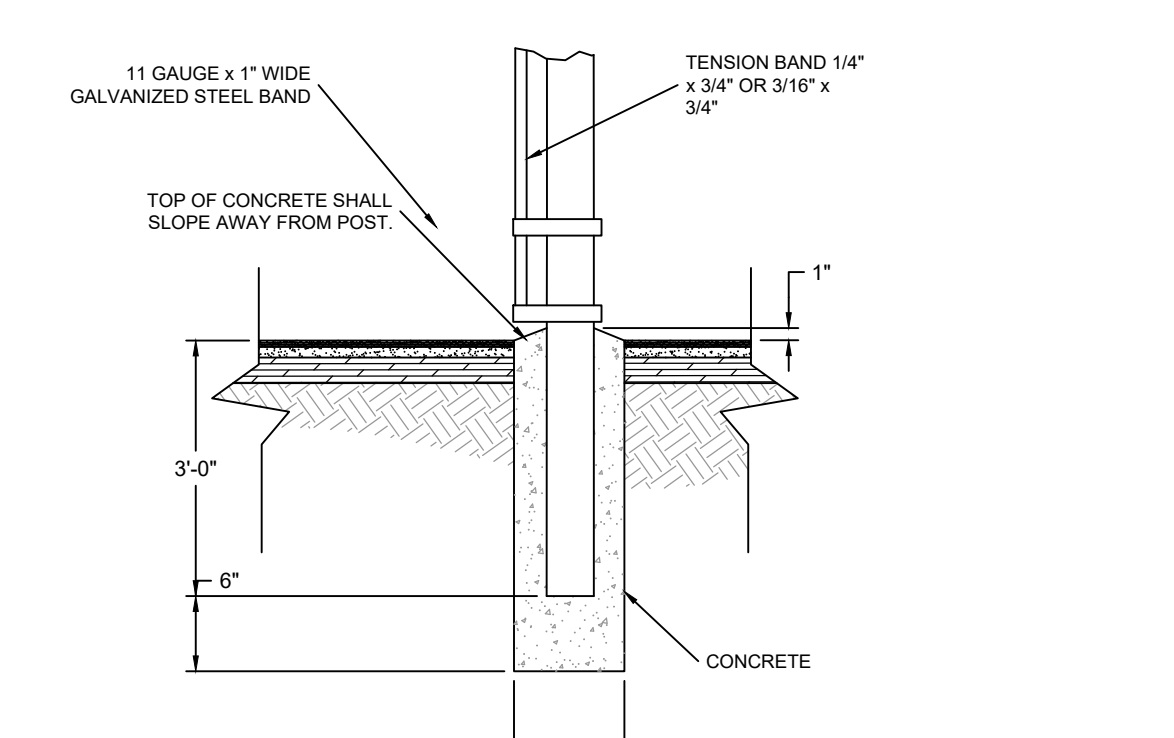
CORNER POST DETAIL
NOT TO SCALE



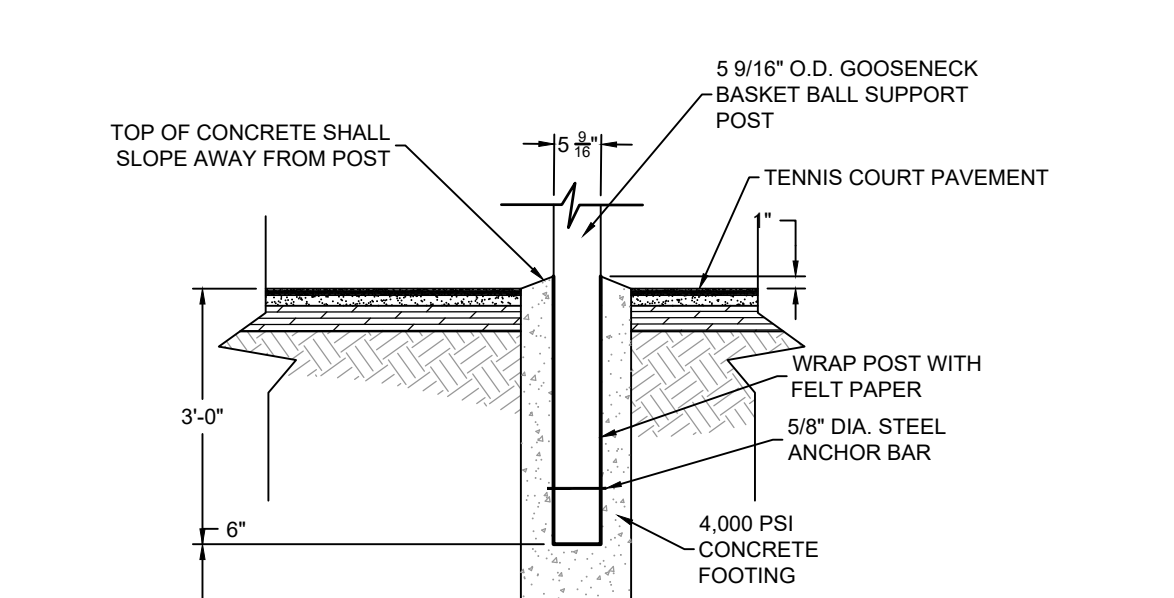
TYPICAL COURT SECTION
NOT TO SCALE



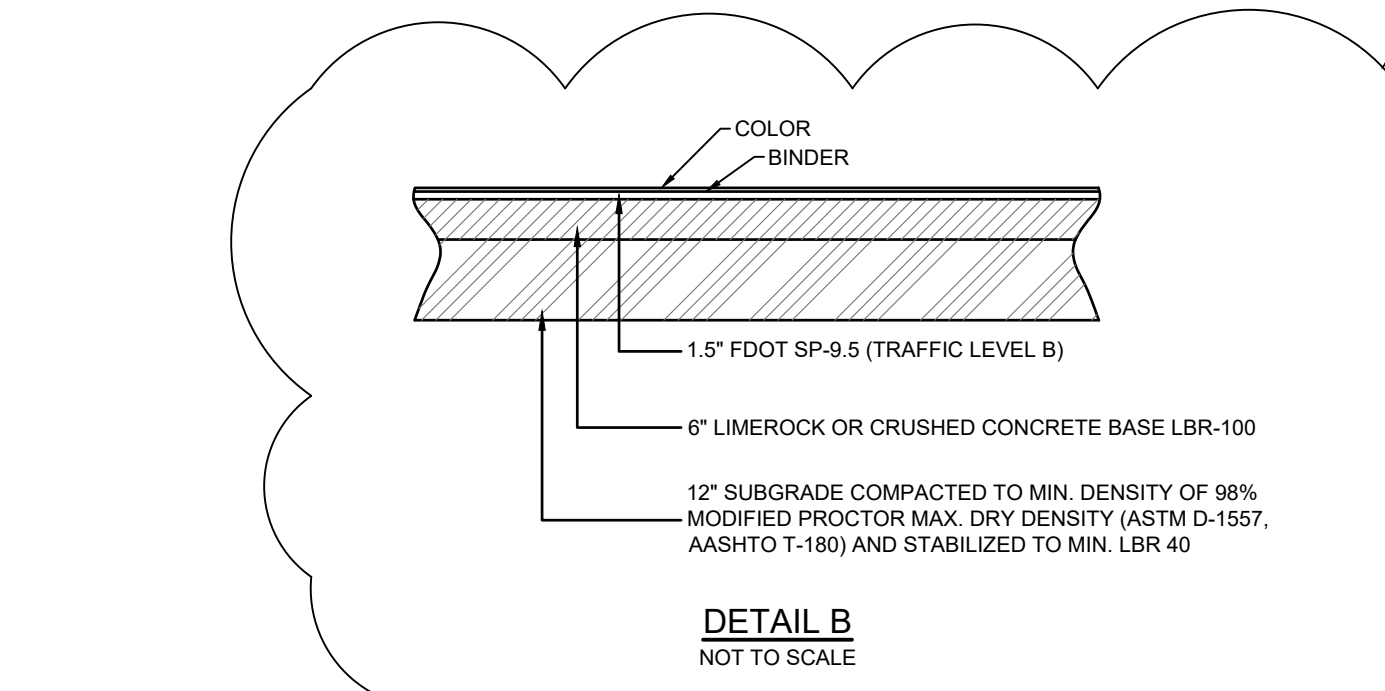
TENNIS NET POST FOOTING DETAIL
NOT TO SCALE



TYPICAL FENCE POST SECTION
NOT TO SCALE



BASKETBALL GOAL POST FOOTING
NOT TO SCALE



DETAIL B
NOT TO SCALE

- NOTES:**
1. TENNIS NET SHALL BE AMERICAN PRO TENNIS CO. STOCK NO. 50-1200 OR EQUAL.
 2. HARDWARE SHALL BE STAINLESS STEEL 304.

Date: Monday, February 21, 2022, 10:52:27 AM. J. Jacob Forster, File: P:\26018 Gore Park Callaway\1. CIVIL\150\150\150\150\150\150.dwg

REV	DATE	BY	REVISIONS	SCALE: AS NOTED
1	02/21/22	CBF	ADDENDUM No.1 BASE	DESIGNED BY: CBF DRAWN BY: JAH REVIEWED BY: CBF
NOT RELEASED FOR CONSTRUCTION BY: DATE:				ISSUE DATE: FEBRUARY 2022 ACAD FILE NAME: 26018e1.dwg

PANHANDLE ENGINEERING, INC.
 ENVIRONMENTAL ENGINEERS • CIVIL ENGINEERS • LAND PLANNERS
 600 Ohio Avenue Lynn Haven, Florida 32444
 (850)763-5200 www.panhandleengineering.com

TENNIS COURT DETAILS
GORE PARK
IMPROVEMENTS
CALLAWAY, FLORIDA

James H. Slomina, P.E. 39197
 Christopher B. Forshard, P.E. 58028
 Stephen E. Price, P.E. 71646
 J. Doug Crook, P.E. 66556

CHRISTOPHER B. FORSHARD
 LICENSED PROFESSIONAL ENGINEER
 NO. 58028
 STATE OF FLORIDA

SHEET NUMBER **D4**
 PROJECT NUMBER **26018**
 DPR CERTIFICATION #EB-7806

26018 GORE PARK IMPROVEMENTS TENNIS COURT DETAILS Sheet D4