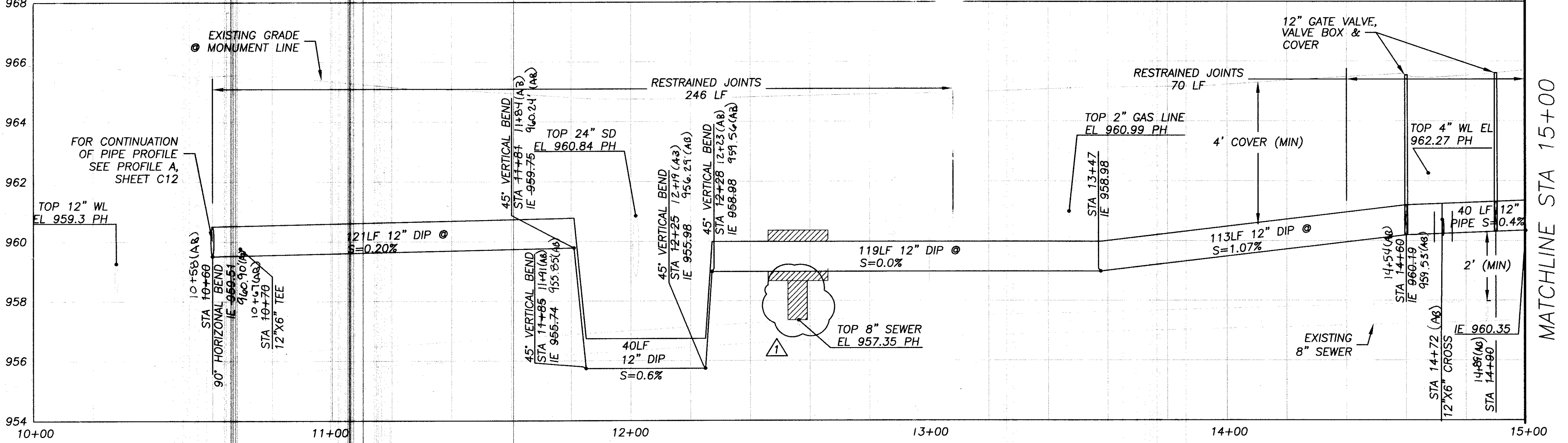
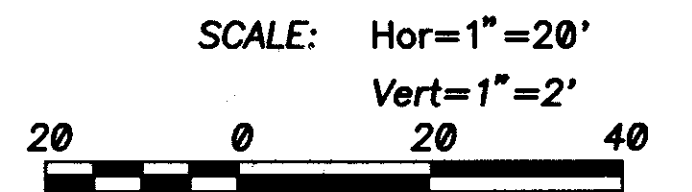


- Construction Notes:**
- ① 12" DIP WATER (JOIN AS SHOWN IN PROFILE PER MAG STD SPEC)
  - ③ 6" DIP WATER (RESTRAIN ALL JOINT PER MAG STD SPEC)
  - ④ 4" DIP WATER (RESTRAIN ALL JOINTS PER MAG STD SPEC)
  - ⑤ STA 10+60, 9'-LT-12" 90° BEND
  - ⑧ STA 10+60, 55' RT BEND (AB)
  - ⑩ STA 14+67, 86' LT 6" BEND (AB) 81.05' LT (AB) STA 14+72, 81' LT 6" 45° BEND (4+71), 70.05' LT (AB)
  - ⑪ STA 10+44, 71' RT 12" GATE VALVE, W/ VALVE BOX & COVER STA 14+60, 9'-LT 2" GATE VALVE, W/ VALVE BOX & COVER STA 14+90, 9'-LT 12" GATE VALVE, W/ VALVE BOX & COVER
  - ⑬ STA 10+70, 10'-LT 6" GATE VALVE, W/ VALVE BOX & COVER STA 14+72, 8'-LT 6" GATE VALVE, W/ VALVE BOX & COVER STA 14+72, 60'-LT 6" GATE VALVE, W/ VALVE BOX & COVER STA 14+73, 58'-LT 6" GATE VALVE, W/ VALVE BOX & COVER
  - ⑯ STA 10+70, 9'-LT 12" X 6" TEE
  - ⑲ STA 14+72, 56'-LT 6" X 6" TEE
  - ⑳ STA 14+72, 38'-LT (AB)
  - ㉒ STA 14+67, 86'-LT (AB) REDUCER 14+67, 86.05' LT (AB)
  - ㉔ STA 14+72, 9'-LT 12" X 6" CROSS
  - ㉖ STA 12+19, 2" WATER SERVICE (CITY TO PROVIDE METER) 12+23 (AB) STA 12+86, 2" WATER SERVICE (CITY TO PROVIDE METER) 12+88 (AB) STA 13+75, 2" WATER SERVICE (CITY TO PROVIDE METER)
  - ㉚ STA 10+70, 42'-LT 10+67, 32.36' LT (AB) STA 14+72, 35'-RT 14+71, 37.98' RT (AB) STA 15+00, 58'-LT 15+20, 38.54' RT (AB) FIRE HYDRANT ASSEMBLY PER DTL G SHT C16
  - ㉛ REMOVE VALVE BOX, PER DTL B
  - ㉜ REMOVE HYDRANT, PER DTL A
  - ㉝ STA 12+46 9' LT CONCRETE ENCASEMENT PER MAG STD DTL 404-3

**Notes:**

- CONTRACTOR SHALL EXCAVATE AT CONNECTION POINT, DETERMINE METHOD OF CONNECTION, COVER UP EXCAVATION IN SUCH A WAY TO MAINTAIN TRAFFIC, AND OBTAIN ALL FITTINGS REQUIRED FOR CONNECTION PRIOR TO TAKING EXISTING MAIN OUT OF SERVICE.
- FOR CONNECTION TO EXISTING PIPING, REMOVE EXISTING PIPE UP TO FIRST JOINT PAST THE MINIMUM JOINT RESTRAINT LENGTH REQUIRED BY MAG STANDARD DETAIL 303.
- QUEST TO RELOCATE EXISTING TELEPHONE CONDUIT PRIOR TO START OF CONTRACTOR'S WORK EFFORT IN THE AREA.



- Construction Notes Cont:**
- ㉞ STA 11+77, 43'-RT 11+77, 44.18' RT (AB) 1 EA
  - ㉟ REMOVE AND REPLACE VALLEY GUTTER
  - ㊱ CUT-IN 12" TEE (NPI)
  - ㊲ DISCONNECT EXISTING 6" W FROM EXISTING 12" W
  - ㊳ REMOVE EXISTING METER AND METER BOX
  - ㊴ REMOVE METER BOX AND CAP SERVICE LINE
  - ㊵ STA 12+75 10'-RT INSTALL SEWER MANHOLE PER MAG 420-2 TYPE B
  - ㊶ INSTALL 6" SERVICE LINE PER MAG 440-1, CONTRACTOR TO MATCH CROWNS
  - ㊷ INSTALL SEWER CAP WITH LOCATOR WIRE

NO.	REVISIONS	JWN	APVD	APVD	DATE
1	QUEST NOTE, ENCASEMENT				1-20-08

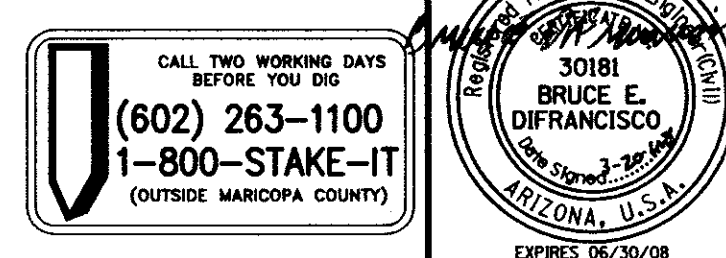
**Stanley Consultants INC.**  
 1661 East Camelback Road, Suite 400, Phoenix, Arizona 85016  
 www.stanleygroup.com

CITY OF AVONDALE  
 DYSART ROAD WATER LINE IMPROVEMENTS  
 VAN BUREN STREET TO WESTERN AVENUE

**PLAN AND PROFILE  
 STA 10+00 TO STA 15+00**

DESIGNED: MB  
 DRAWN: RCM  
 CHECKED: JM  
 APPROVED: BED  
 DATE: FEBRUARY 2007

SCALE: 1"=20'  
 NO. C1  
 REV. -



XREFS: 18259\_BDR; Right-of-way, Avondale Waterline Survey; 18259\_GEO; existing utilities; 18259\_PROP\_WL; 18259\_PROF; 18259\_GEO\_STA

C:\18259\11-000\Sheet\18259\_101.dwg  
 SCI PROJECT NO: 18259

AS-BUILT