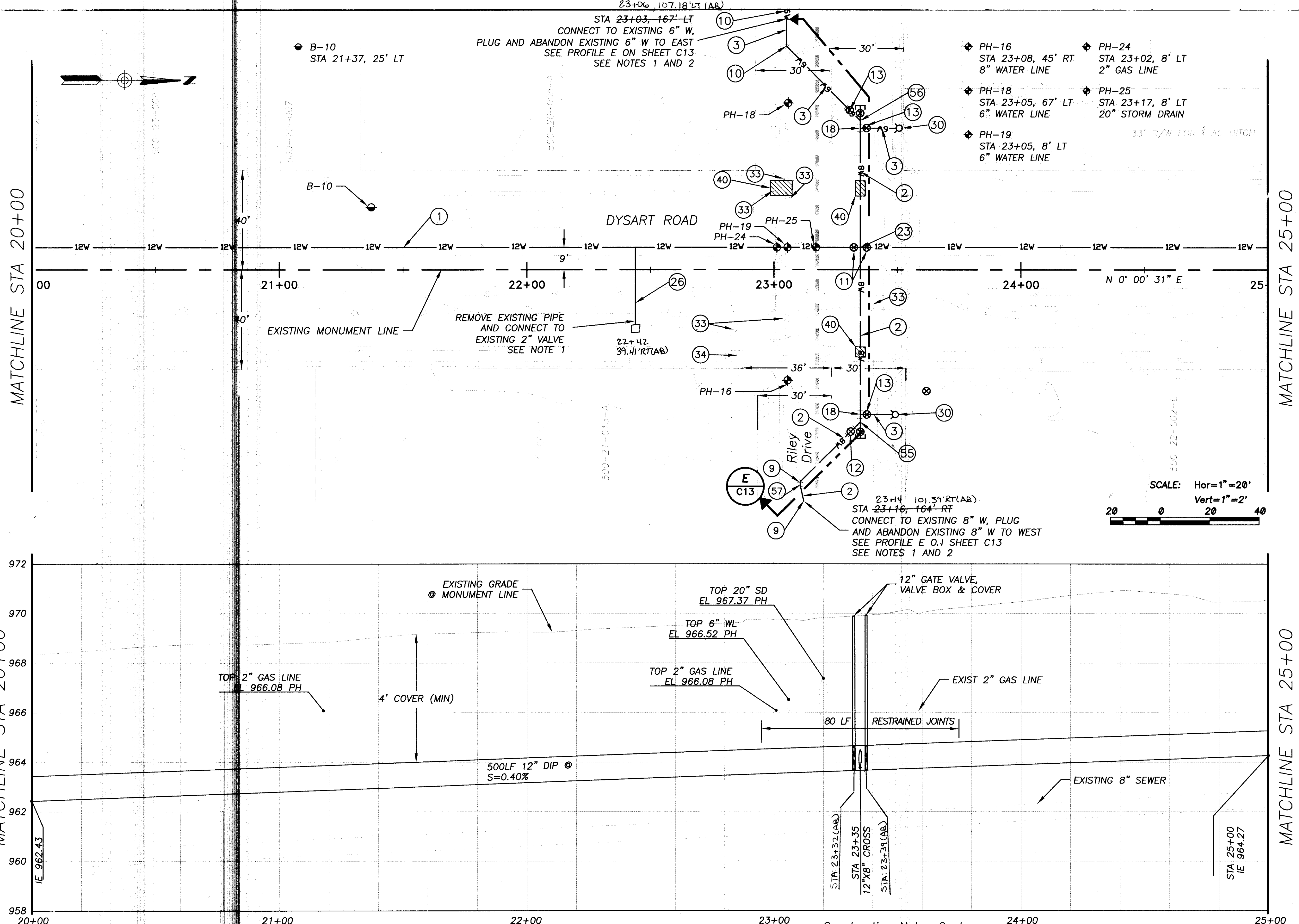
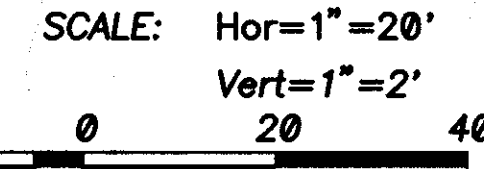


XREFS: 18259\_BDR; right-of-way, Avondale Waterline Survey; 18259\_GEO; 18259\_PROP; existing utilities; 18259\_KEYMAP\_STA; 18259\_MAP\_WL; 18259\_GEO\_STA



- Construction Notes:**
- ① 12" DIP WATER PER MAG STD SPEC 750 500 LF
  - ② 8" DIP WATER (RESTRAIN ALL JOINTS) PER MAG STD SPEC 750 234 LF
  - ③ 6" DIP WATER (RESTRAIN ALL JOINTS) PER MAG STD SPEC 750 149 LF
  - ⑨ STA 23+11, 86' RT 8" 45' BEND 23+14, 89.52' RT (AB) 2 EA  
STA 23+16, 111' RT 8" 45' BEND 23+14, 94.83' RT (AB)
  - ⑩ STA 23+05, 90' LT 6" 45' BEND 23+10, 98.52' LT (AB) 2 EA  
STA 23+05, 125' LT 6" 45' BEND 23+10, 107.18' LT (AB)
  - ⑪ STA 23+33, 9' LT 23+32, 908' LT (AB) 3 EA  
12" GATE VALVE, W/ VALVE BOX AND COVER  
STA 23+37, 9' LT 23+39, 8.92' LT (AB)  
12" GATE VALVE, W/ VALVE BOX AND COVER
  - ⑫ STA 23+31, 65' RT 73.01' RT (AB) 1 EA  
12" GATE VALVE, W/ VALVE BOX AND COVER
  - ⑬ STA 23+30, 64' LT 74.76' LT (AB) 2 EA  
6" GATE VALVE, W/ VALVE BOX AND COVER  
STA 23+36, 57' LT 61.51' LT (AB)  
6" GATE VALVE, W/ VALVE BOX AND COVER  
STA 23+36, 58' RT 60.42' RT (AB)  
6" GATE VALVE, W/ VALVE BOX AND COVER
  - ⑮ STA 23+35, 58' RT 8"X6" TEE 60.42' RT (AB) 2 EA  
STA 23+35, 57' LT 8"X6" TEE 61.51' LT (AB)
  - ⑲ STA 23+35, 9' LT, 12"X8" (AB) 1 EA CROSS
  - ⑳ STA 22+44, PARTIAL 2" 22+42 (AB) 1 EA WATER SERVICE REPLACEMENT
  - ㉓ STA 23+50, 57' LT FIRE HYDRANT ASSEMBLY, 23+48, 61.47' LT (AB) PER DTL G SHT C16  
STA 23+48, 58' RT FIRE 23+49, 60.16' RT (AB) HYDRANT ASSEMBLY, PER DTL G SHT C16
  - ㉔ REMOVE VALVE BOX, PER DTL B ON SHEET C15 6 EA
  - ㉕ REMOVE HYDRANT, PER DTL A ON SHEET C15 1 EA
  - ㉖ REMOVE AND REPLACE VALLEY GUTTER 16 LF

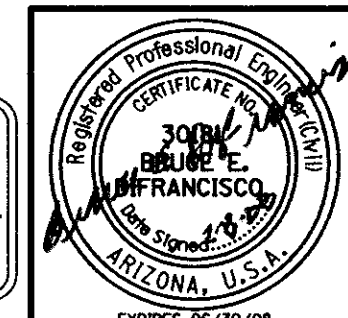


**Note:**

1. CONTRACTOR SHALL EXCAVATE AT CONNECTION POINT, DETERMINE METHOD OF CONNECTION, COVER UP EXCAVATION IN SUCH A WAY TO MAINTAIN TRAFFIC, AND OBTAIN ALL FITTINGS REQUIRED FOR CONNECTION PRIOR TO TAKING EXISTING MAIN OUT OF SERVICE.
2. FOR CONNECTION TO EXISTING PIPING, REMOVE EXISTING PIPE UP TO FIRST JOINT PAST THE MINIMUM JOINT RESTRAINT LENGTH REQUIRED BY MAG STANDARD DETAIL 303.

**Construction Notes Cont:**

- ⑤⑤ STA 23+35, 89' LT 8"X8" WYE 73.11' RT (AB) EA W/8" GATE VALVE AND BLIND FLANGE (AB)
- ⑤⑥ STA 23+35, 60' LT 8"X6" WYE 70.11' LT (AB) EA W/8" GATE VALVE AND BLIND FLANGE (AB)
- ⑤⑦ STA 23+11, 87' RT 8" 11 1/4' BEND 1 EA



**Stanley Consultants INC.**  
1661 East Camelback Road, Suite 400, Phoenix, Arizona 85016  
www.stanleygroup.com

CITY OF AVONDALE  
DYSART ROAD WATER LINE IMPROVEMENTS  
VAN BUREN STREET TO WESTERN AVENUE

**PLAN AND PROFILE  
STA 20+00 TO STA 25+00**

DESIGNED MB	SCALE: 1"=20'
DRAWN RCM	NO.
CHECKED JM	REV.
APPROVED BED	C3
APPROVED	
DATE FEBRUARY 2007	

AS-BUILT