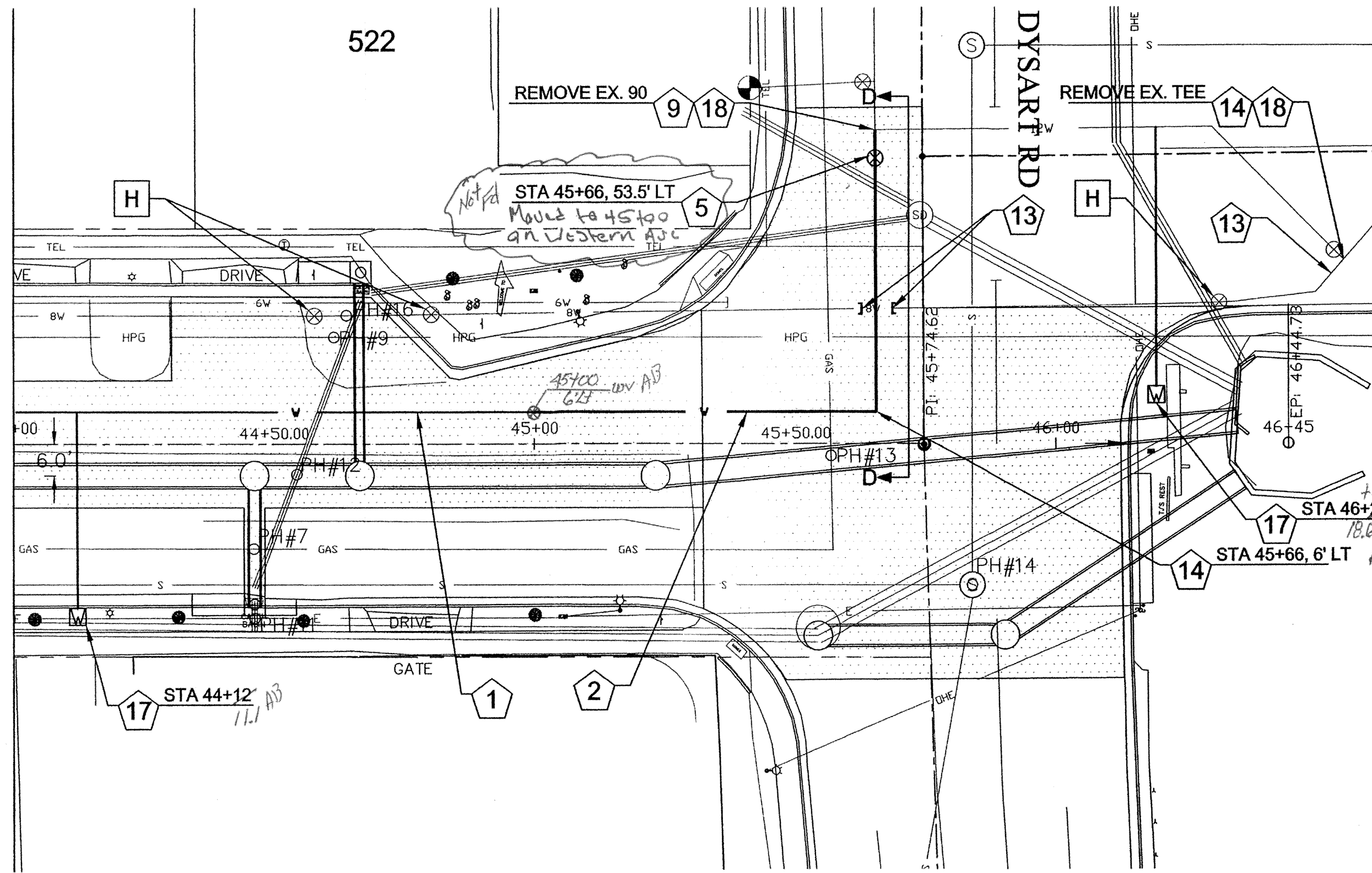
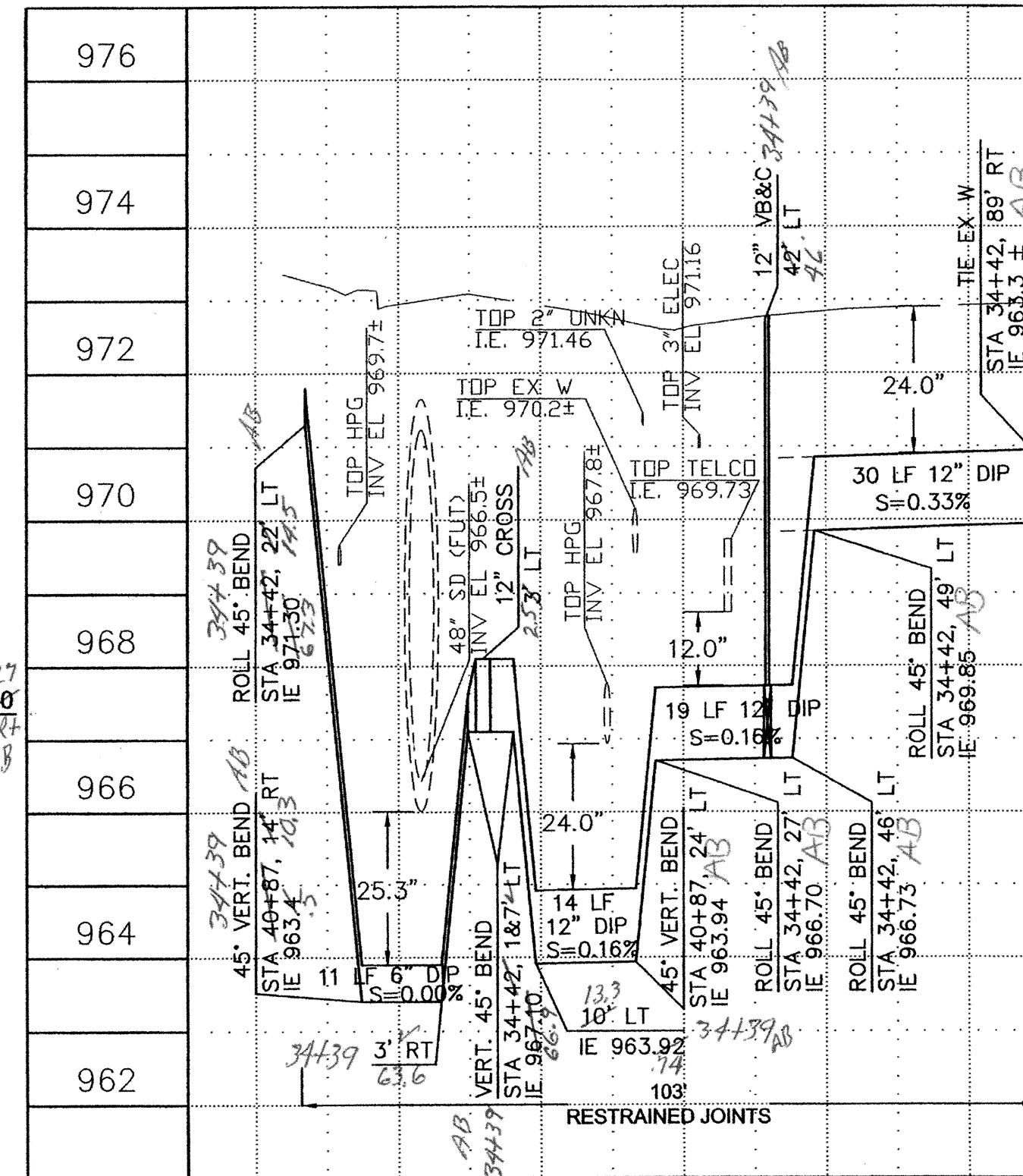
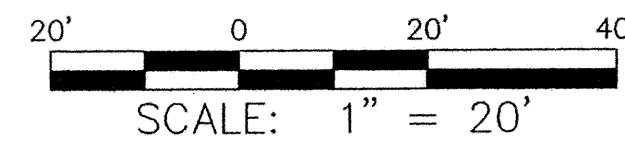


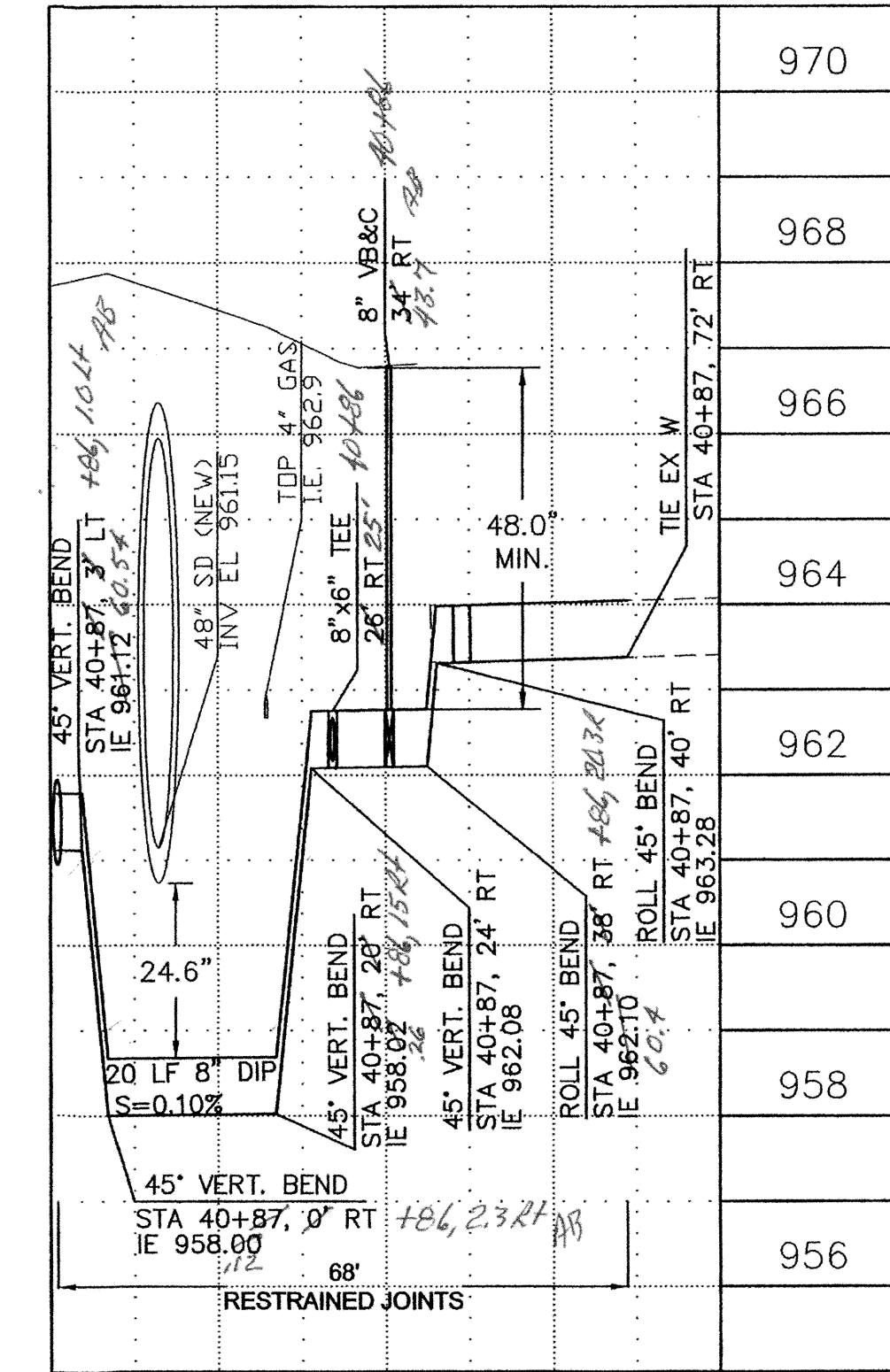
MATCH LINE STA 44+00 - SEE SHEET 7



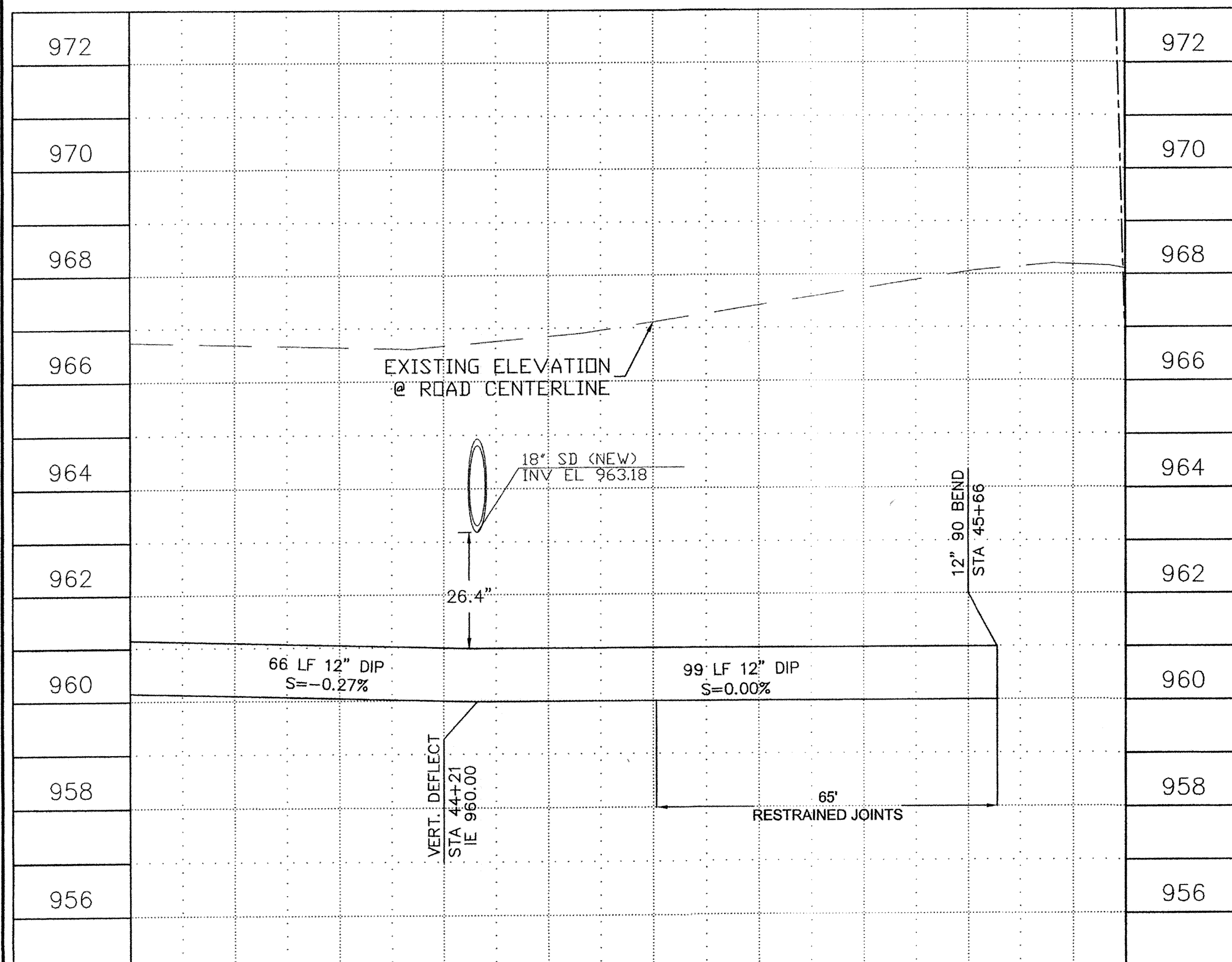
WESTERN AVE



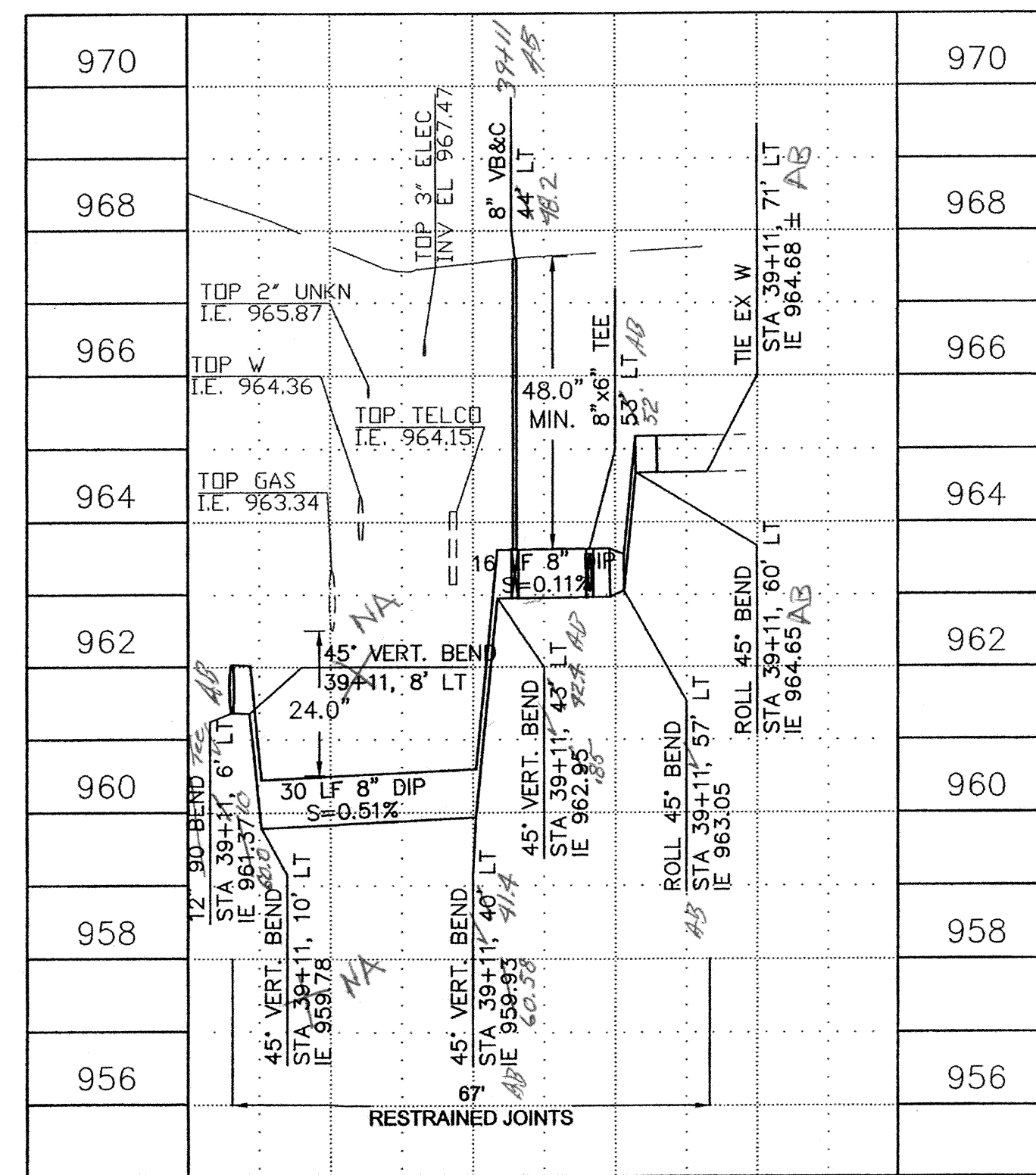
SECTION A-A



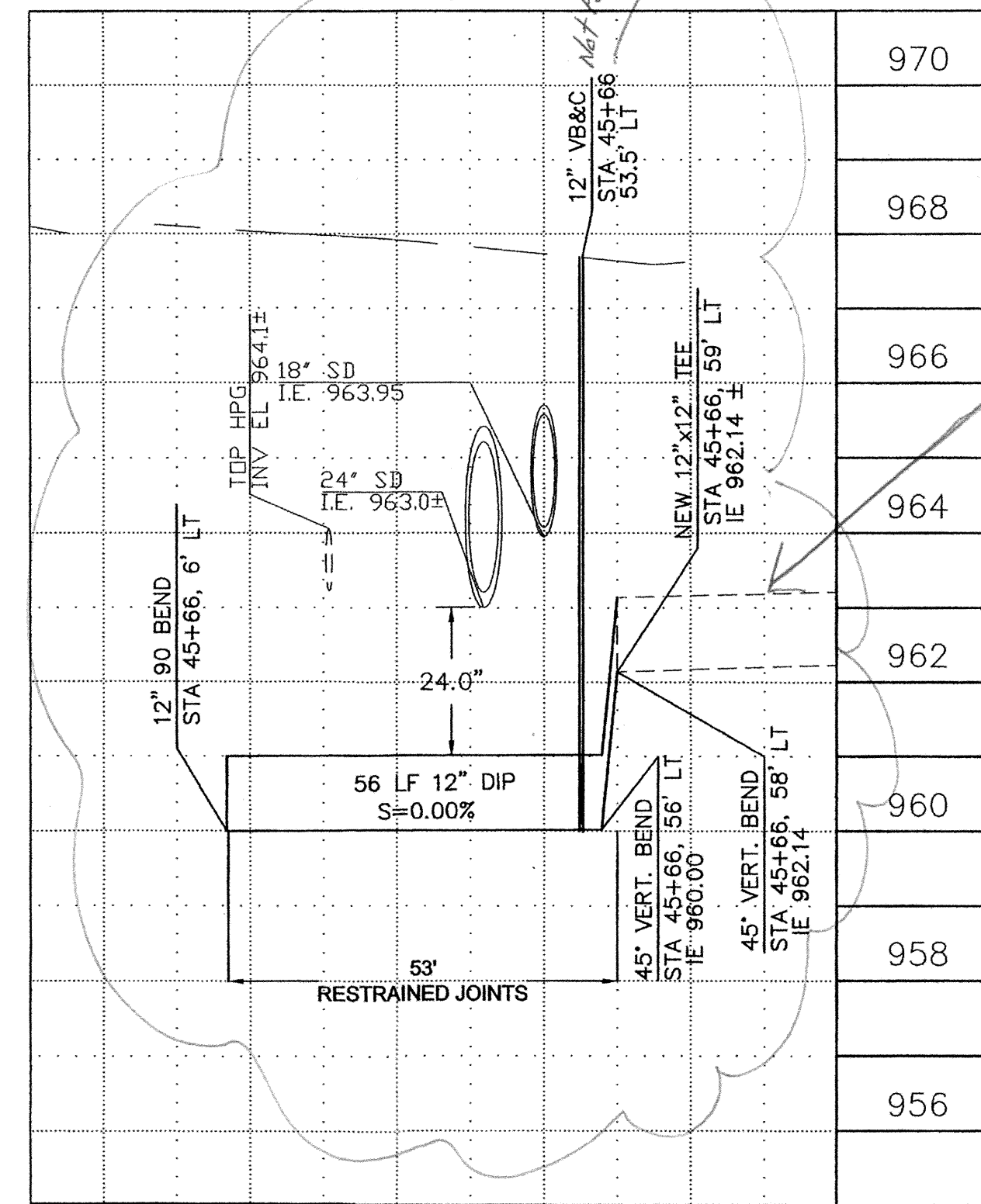
SECTION C-C



44+00 45+00



SECTION B-B



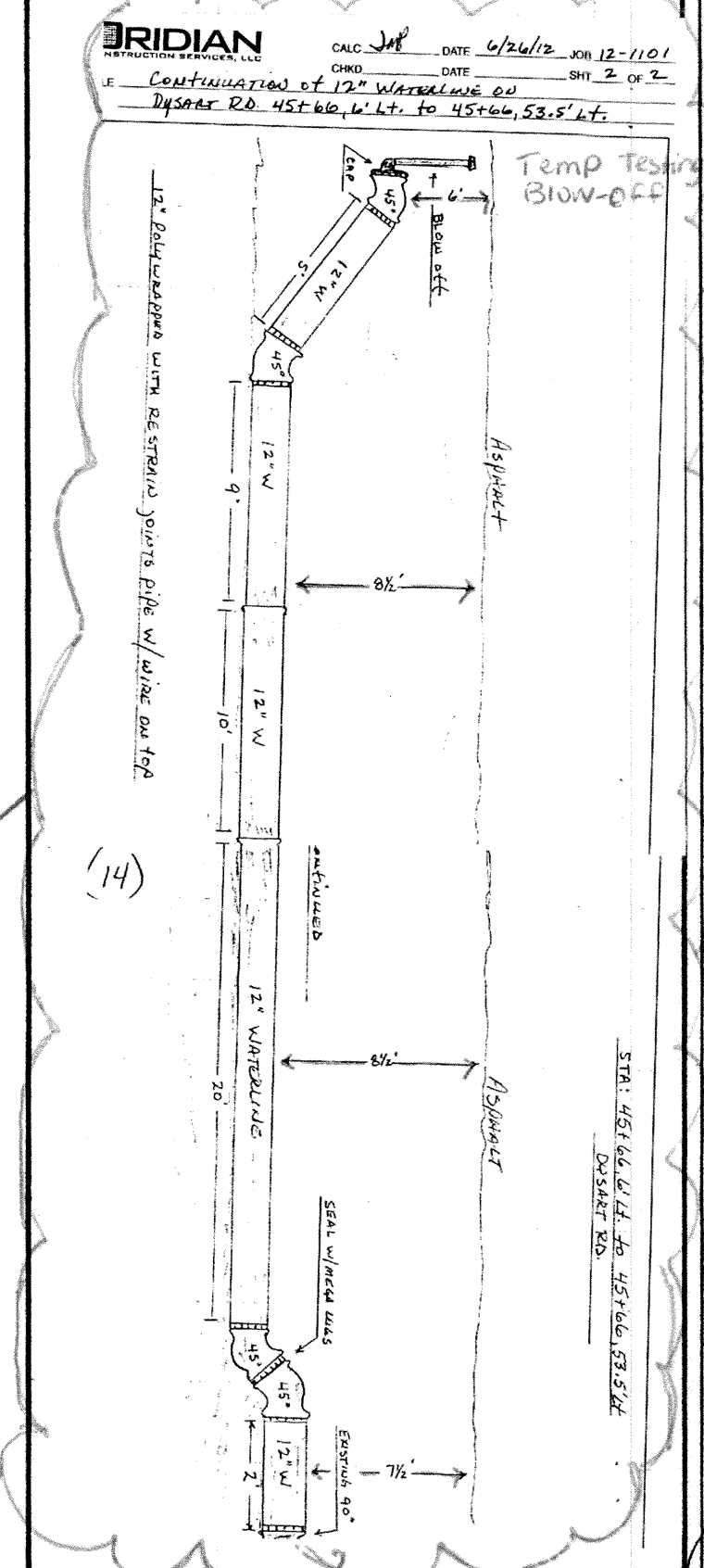
SECTION D-D

REMOVE/RELOCATE NOTES	
DESCRIPTION	QUANTITY
H REMOVE VALVE BOX & COVER	3 EA

WATER CONSTRUCTION NOTES	
DESCRIPTION	QUANTITY
1 INSTALL 12" DIP WATERLINE CLASS 350 (POLYWRAPPED) PER MAG STD. DET. 610, TRENCH PER COA STD DET. A1101	100 LF
2 INSTALL 12" DIP WATER CLASS 350 (POLYWRAPPED) WITH RESTRAIN JOINTS PER MAG STD. DET. 305	135 LF
5 INSTALL 12" GATE VALVE WITH VALVE BOX & COVER PER COA STD. DET. A1310	1 EA
9 INSTALL 12" x 12" x 12" TEE	1 EA
13 CUT & CAP EXISTING WATERLINE	3 EA
14 INSTALL 90° BEND	2 EA
17 2" WATER SERVICE LINE: WATER SADDLE, CORP STOP, 2" COPPER TYPE "K" LINE, CURB STOP, METER COUPLING, METER BOX AND COVER PER COA STD. DET. A1301	2 EA
18 CONNECT TO EXISTING WATERLINE PROVIDE NECESSARY FITTINGS COMPATIBLE WITH EXISTING WATERLINE FOR CONNECTION OF NEW LINE TO EXISTING LINE AND DIP SHORTS.	2 EA

DRAWN BY: XXX
 DESIGNED BY: XXX
 CHECKED BY: XXX
 SHEET: W 03
 BOARD: 1" = 20'
 POSITION: VERT. 1" = 2'

ENGINEERING DEPARTMENT
 11465 W CIVIC CENTER DR
 AVONDALE, AZ 85323
 (623) 333-4200



WATERLINE PLAN
 WESTERN AVE STORM DRAIN
 PROJECT NUMBER: ST1293

48184
 CHRIS A. HAMILTON
 REGISTERED PROFESSIONAL ENGINEER
 EXPIRES 03-30-2014
 ORIGINAL PLAN DATE: 2-28-2012
 LATEST REVISION DATE: 3-14-2012
 SHEET NUMBER: 8 OF 9
 PROJECT NUMBER: ST1293

