

COA New Center for Liberal Arts N&T Project #21701	
CCD #052	Date: 10/23/2019



TITLE: Additional AV System Revisions

Project Name/Owner:	Architect:	General Contractor:
Peralta Community College District 333 E 8 th Street Oakland, CA 94606 Attn: Sharon Millman	Noll & Tam Architects 729 Heinz Avenue Berkeley, CA 94710 Attn: Chris Noll	C. Overaa & Co. 200 Parr Boulevard Richmond, CA 94801 Attn: Joshua Headley

General: *The following instructions, substitutions, alterations, changes, clarifications, additions, and/or deletions are hereby made a part of the Contract Documents and modify the original Documents dated May 30, 2018. All other conditions shall remain the same. Unless otherwise stated in writing to the Owner, proceeding with the work described in this ASI (Architect's Supplemental Instruction) indicates the General Contractor's acknowledgement that there will be no change in the Contract Sum or Contract Time.*

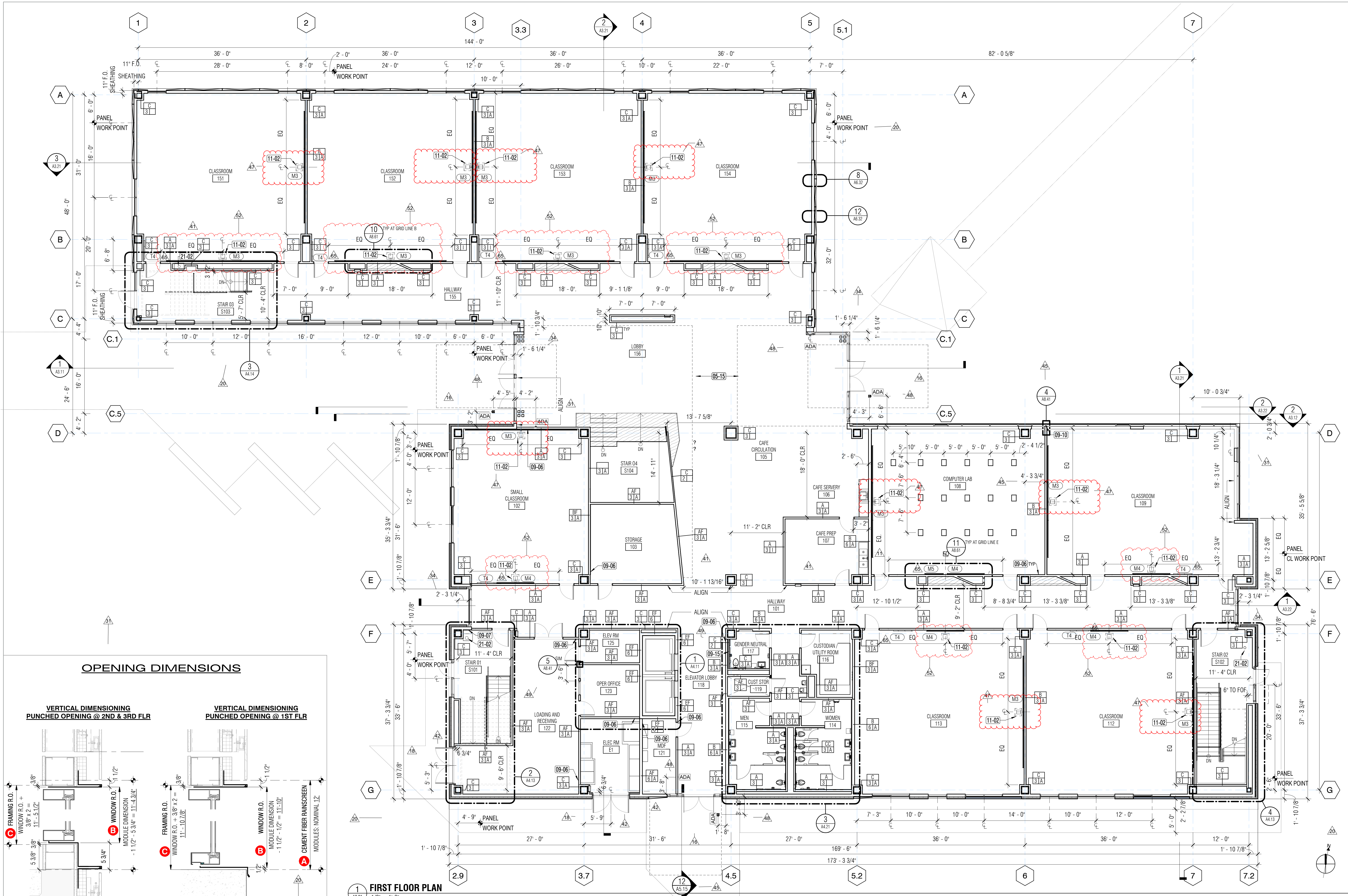
Description of Work:

<p>The following sheets have been reissued:</p> <p>A2.21 - Wall mounted projector located, identified, and dimensioned</p> <p>A2.22 - Wall mounted projector located, identified, and dimensioned - Wall mounted projector removed from rooms 280, 281.</p> <p>A2.23 - Wall mounted projector located, identified, and dimensioned</p> <p>A2.41 - Wall mounted projector located and identified</p> <p>A2.42 - Wall mounted projector located and identified - Wall mounted projector removed from rooms 280, 281.</p> <p>A2.43 - Wall mounted projector located and identified</p> <p>A7.14 - 2S/A7.14 revised markerboard size, wall mounted projector located and identified</p> <p>A7.15 - 2N/A7.15 and 3N/A7.15 revised markerboard size, wall mounted projector located and identified</p>
--

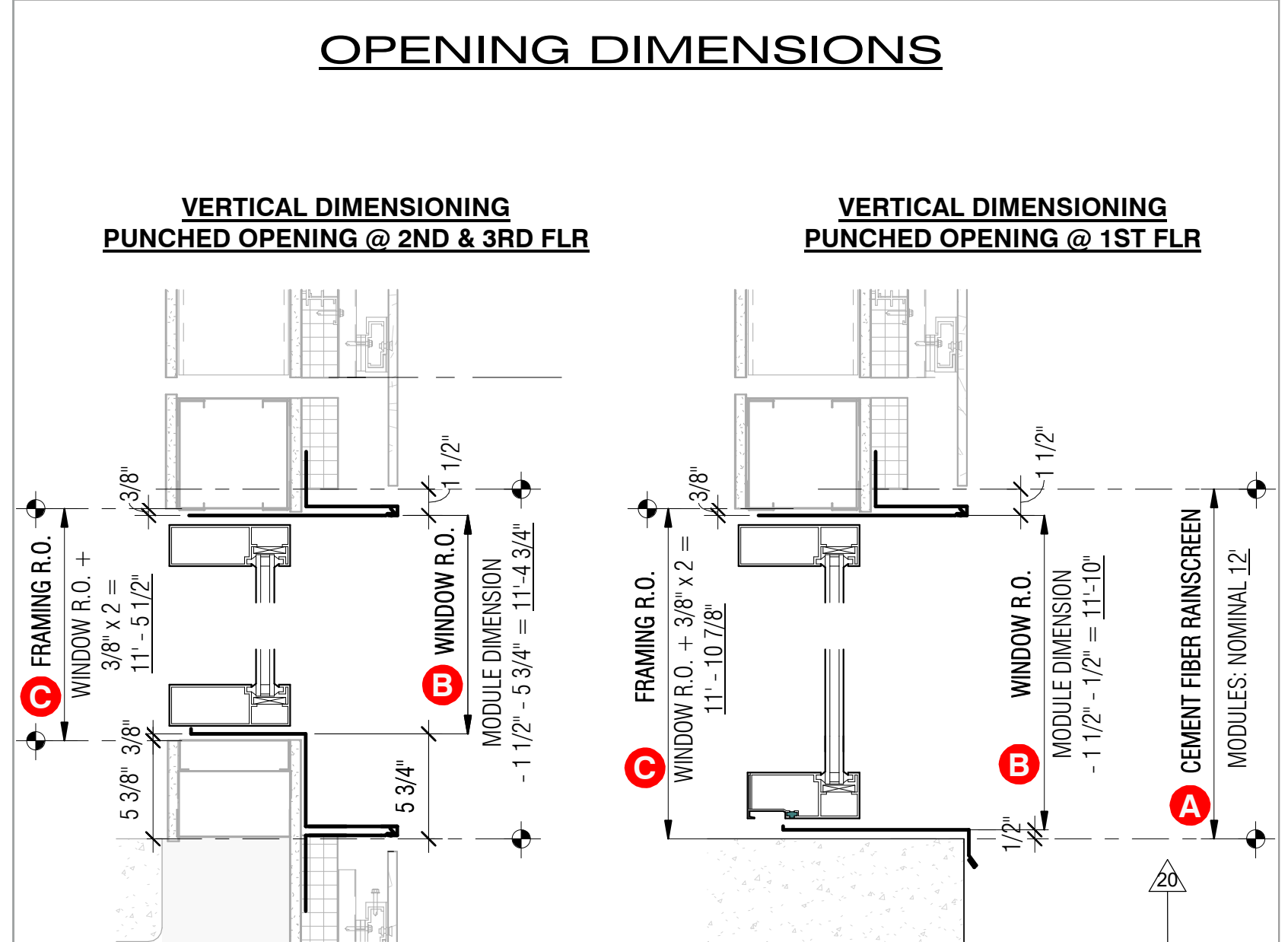
Documents Issued / Attachments:

See attached Drawings:

NO.	DATE	DESCRIPTION
11	02/28/19	CCD 11
16	03/17/2019	CCD 16
18	05/01/2019	CCD 18
20	05/15/2019	CCD 20
34	06/21/2019	CCD 34
31	08/05/2019	CCD 31
41	08/31/19	CCD 41
42	09/09/2019	CCD 42
45	09/31/2019	CCD 45
47	10/18/2019	CCD 47
49	10/22/2019	CCD 49
52	10/23/2019	CCD 52
48	10/31/2019	CCD 48
65	04/15/2020	CCD 65



1 FIRST FLOOR PLAN
1/8" = 1'-0"



SURFACE LEGEND

MARKERBOARD SURFACE	MIRROR SURFACE
SEE DETAIL B / A8.62	LENGTH X WIDTH
(M1) 8' x 4'	(R1) 3'-6" x 6'
(M2) 8'x4', 8'x5'	
(M3) 8'x4', 8'x5', 8'x4'	
(M4) 8' x 5'	
(M5) 4' x 3'	
TACKBOARD SURFACE	
SEE DETAIL B / A8.62	LENGTH X WIDTH
(T1) 8' x 4'	(T3) 4' x 8'-10"
(T2) 16' x 4'	(T5) FULL WALL
	(T4) 4' x 3', LOCATION TBD

LAYOUT PLAN LEGEND

- FLOOR RECEPTACLE. SEE 5 / A8.62 FOR DETAIL
- FLOOR RECEPTACLE. SEE 5 / A8.62 FOR DETAIL
- ADA DOOR ACTUATOR

PARTITION TYPE LEGEND

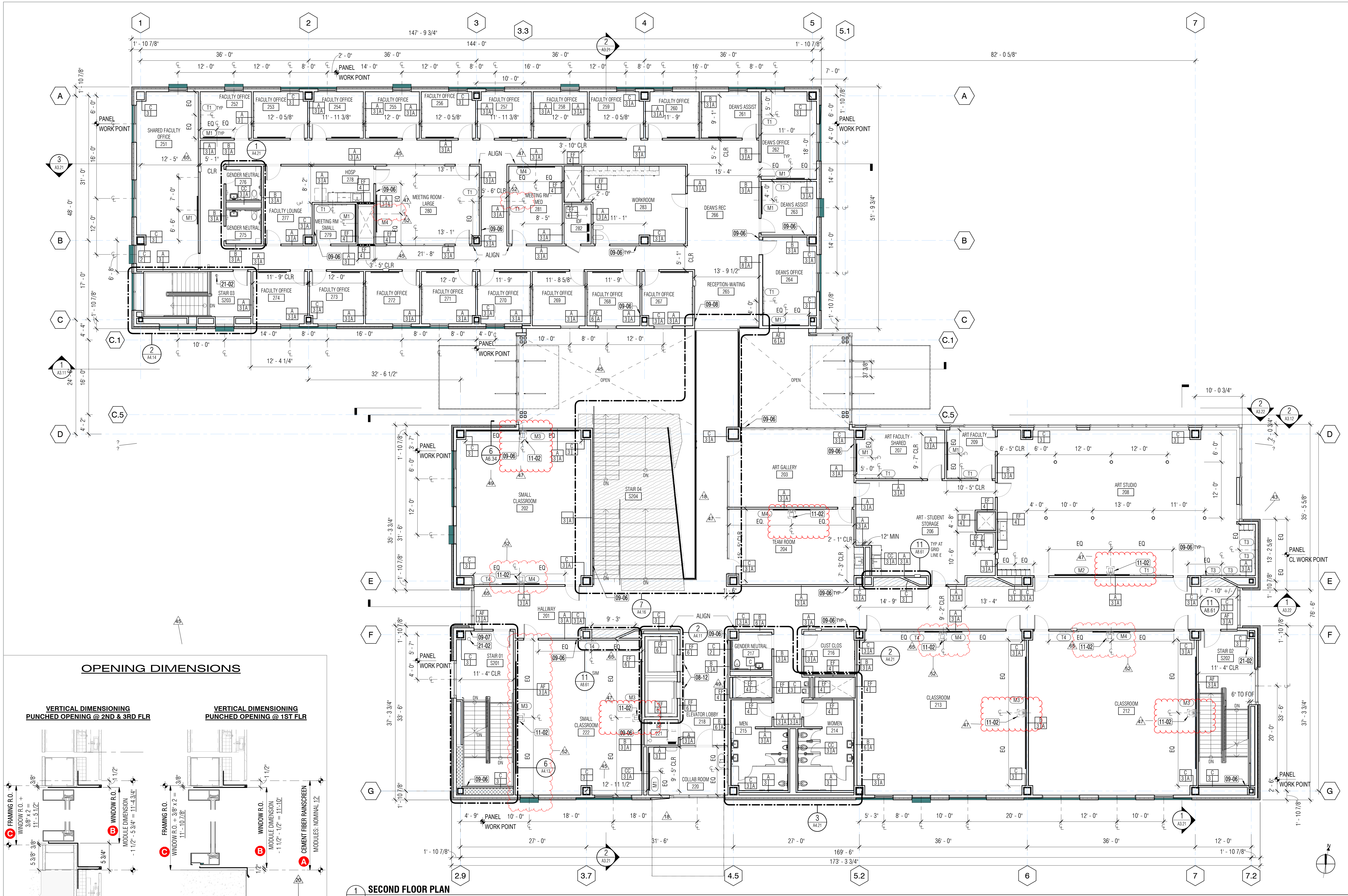
- FRAMING SIZE: 10'-10", 8'-8", 6'-6", 4'-4", 3'-3 5/8", 2'-2 1/2"
- PARTITION TYPE: "S" INDICATES STRUCTURAL STUDS, "F" INDICATES FIRE RATED.
- INSULATION: A: ACOUSTICAL

REFER TO SHEET A8.10 FOR INTERIOR PARTITION TYPES

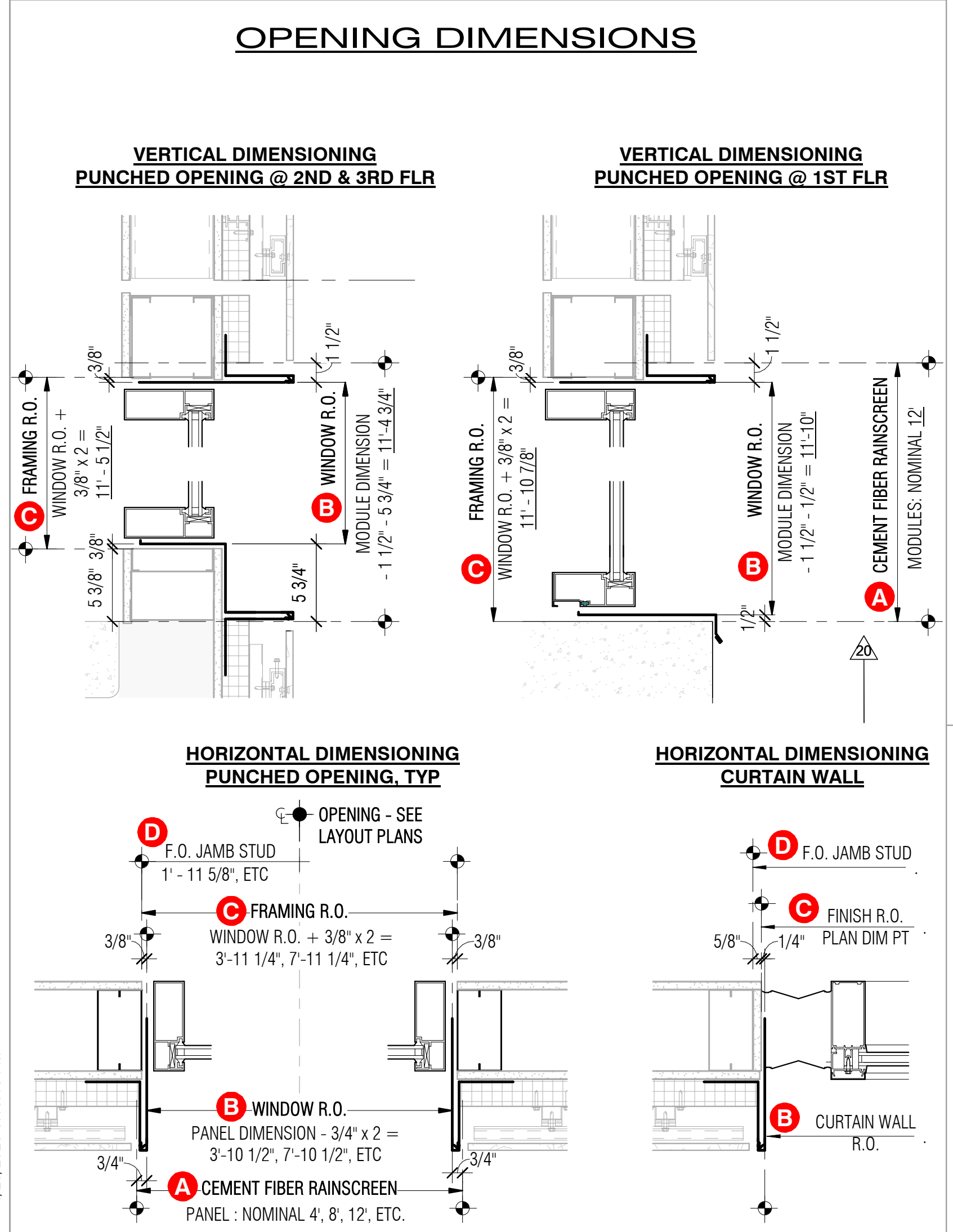
KEYNOTE LEGEND

KEY	NOTE
05-15	OPEN ABOVE
09-06	ALIGN PARTITION WITH ADJACENT FINISH
09-07	FURR OUT PARTITION TO ALIGN WITH ADJACENT FINISH
09-10	ALIGN CENTERLINE OF PARTITION WITH CENTERLINE OF MULLION
09-15	FURRED OUT WALL AT RM 217 AND RM 317 ONLY
11-02	WALL-MOUNTED PROJECTOR
21-02	SEE FIRE PROTECTION DRAWINGS

- GENERAL NOTES**
- SEE STRUCTURAL DRAWINGS FOR TYPICAL FRAMING DETAILS
 - TYPICAL DIMENSION START POINT IS FROM GRIDLINE
 - INTERIOR PARTITION DIMENSIONS ARE TO FACE OF STUD, UON
 - INTERIOR PARTITIONS ARE FULL HEIGHT TO UNDERSIDE OF FLOOR/ROOF TYP. UON
 - INTERIOR PARTITIONS ARE TYPE A WITH FRAMING SIZE OF 3 5/8" AND ACOUSTIC INSULATION TYP. UON
 - FOR INTERIOR PARTITION TYPES, SEE SHEET A8.10
 - FOR TYPICAL CODE REQUIRED DOOR CLEARANCES, SEE SHEET G3.21
 - ALL DOORS ARE LOCATED 4" FROM ADJACENT WALL FINISH AT HINGE SIDE, UON
 - REFER TO FLOOR PLANS FOR DOOR NUMBERS, AND ENLARGED PLAN AND INTERIOR ELEVATION CALLOUTS
 - REFER TO CIVIL SITE GRADING PLAN PHASE 2 FOR ADDITIONAL INFORMATION
 - ALL COLUMNS TO BE FURRED, UON. COLUMN FURRING IS PARTITION TYPE C UNLESS OTHERWISE INDICATED
 - DOORS TO BE LOCATED 4" AWAY FROM ADJACENT WALL TYP. UON
 - FOR PARTITIONS AND CASEWORK ADJACENT TO FURRED-OUT COLUMNS, ALIGN FINISH FACE, TYP. UON
 - FOR FLOOR RECEPTACLE DETAIL, SEE DETAIL
 - FOR MARKERBOARD AND TACKBOARD MOUNTS, A8.62 TO DETAIL B / A8.62



1 SECOND FLOOR PLAN
1/8" = 1'-0"



SURFACE LEGEND

MARKERBOARD SURFACE	MIRROR SURFACE
SEE DETAIL 8 / A8.62	LENGTH X WIDTH
(M1) 8' x 4'	(R1) 3'-6" x 6"
(M2) 8' x 4', 8' x 5'	
(M3) 8' x 4', 8' x 5', 8' x 4'	
(M4) 8' x 5'	
(M5) 4' x 3'	
TACKBOARD SURFACE	
SEE DETAIL 8 / A8.62	LENGTH X WIDTH
(T1) 8' x 4'	(T3) 4' x 6'-10"
(T2) 16' x 4'	(T4) 4' x 3', LOCATION TBD

LAYOUT PLAN LEGEND

- FLOOR RECEPTACLE, SEE 5 / A8.62 FOR DETAIL
- FLOOR RECEPTACLE, SEE 5 / A8.62 FOR DETAIL
- DOOR RECEPTACLE

PARTITION TYPE LEGEND

- FRAMING SIZE: 10'-10", 8'-8", 6'-6", 4'-4", 3'-3 5/8", 2'-2 1/2"
- PARTITION TYPE 'S' INDICATES STRUCTURAL STUDS, 'F' INDICATES FIRE RATED.
- INSULATION: A: ACOUSTICAL

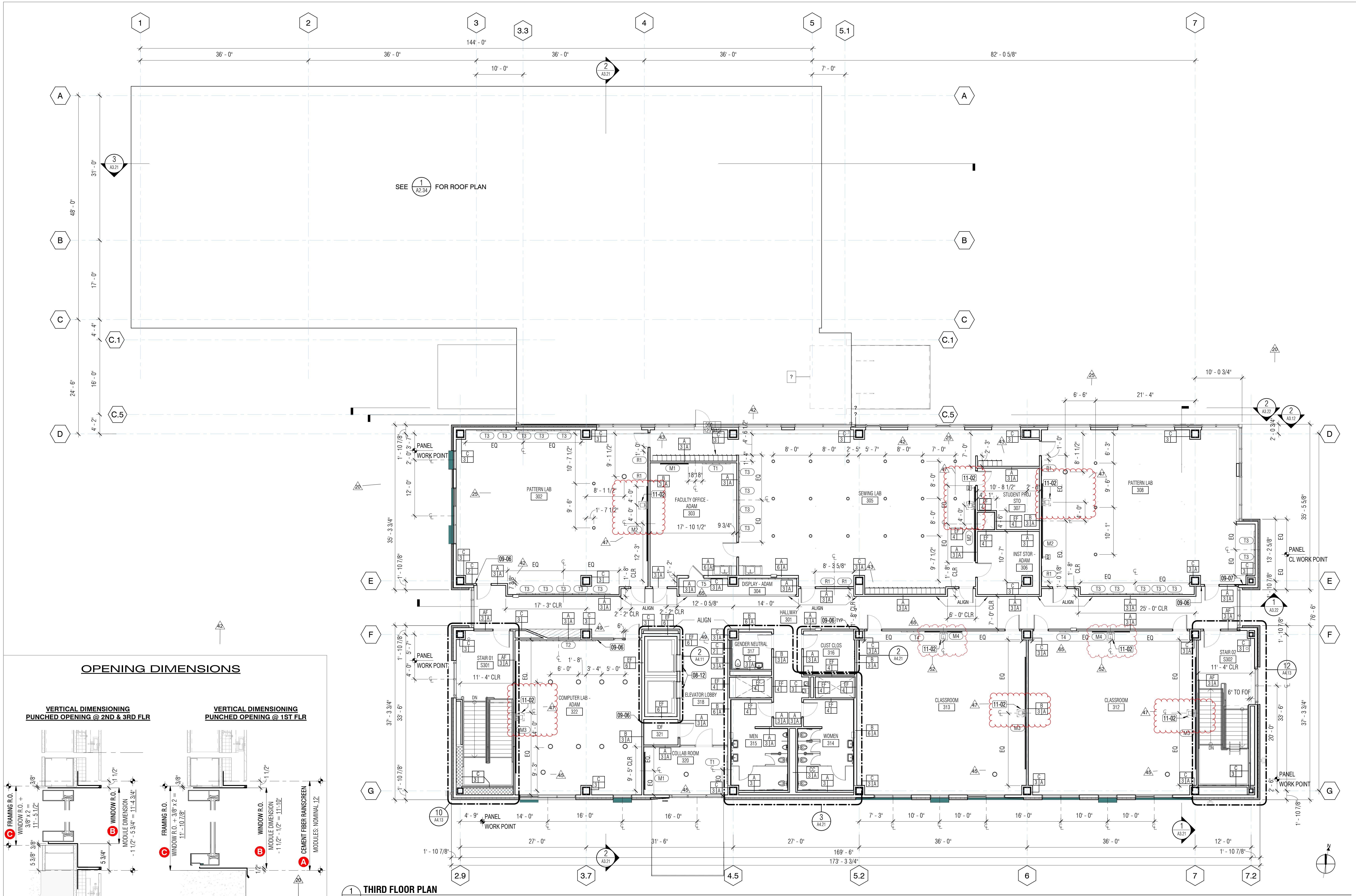
REFER TO SHEET A8.10 FOR INTERIOR PARTITION TYPES

KEYNOTE LEGEND

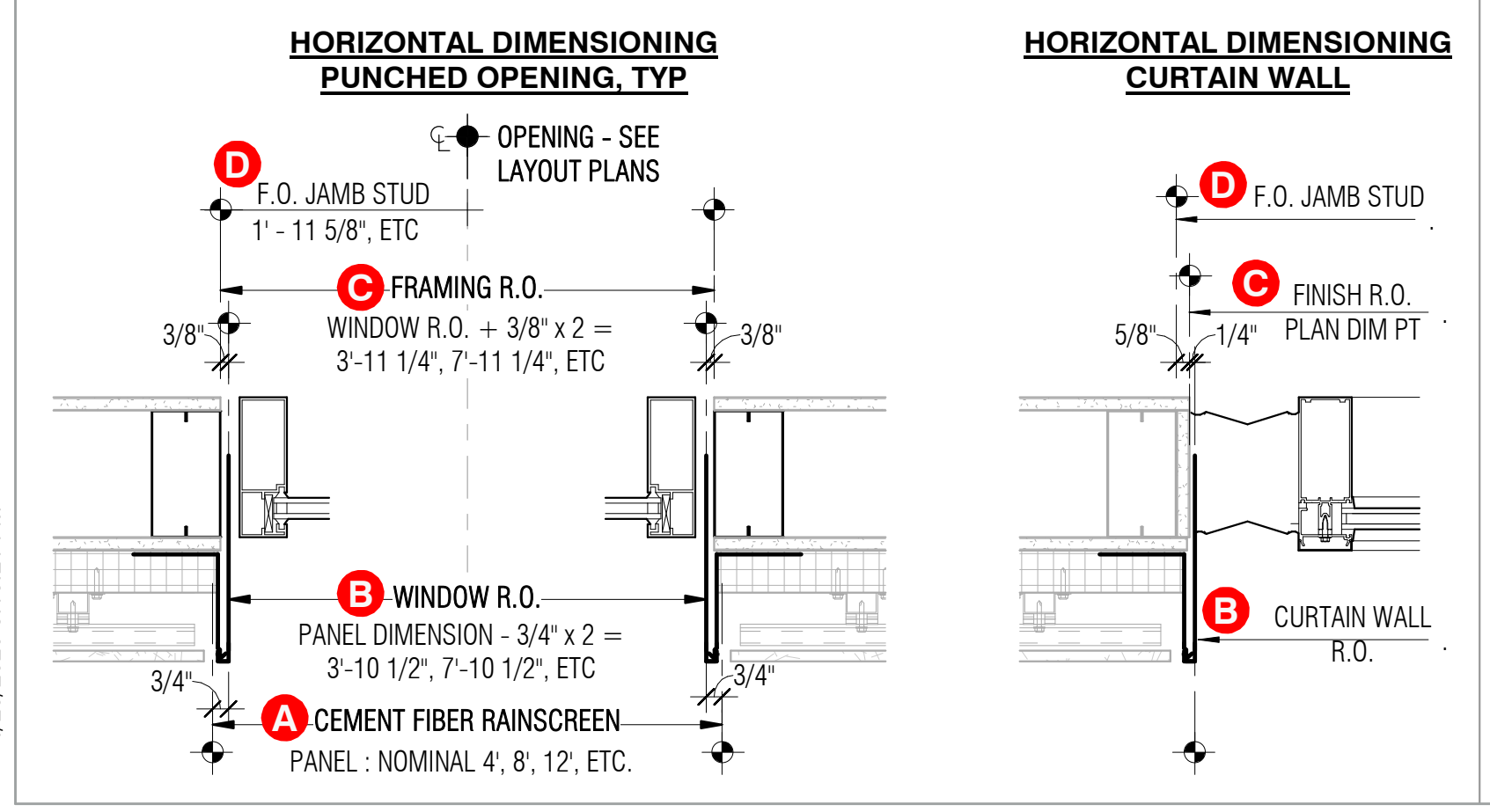
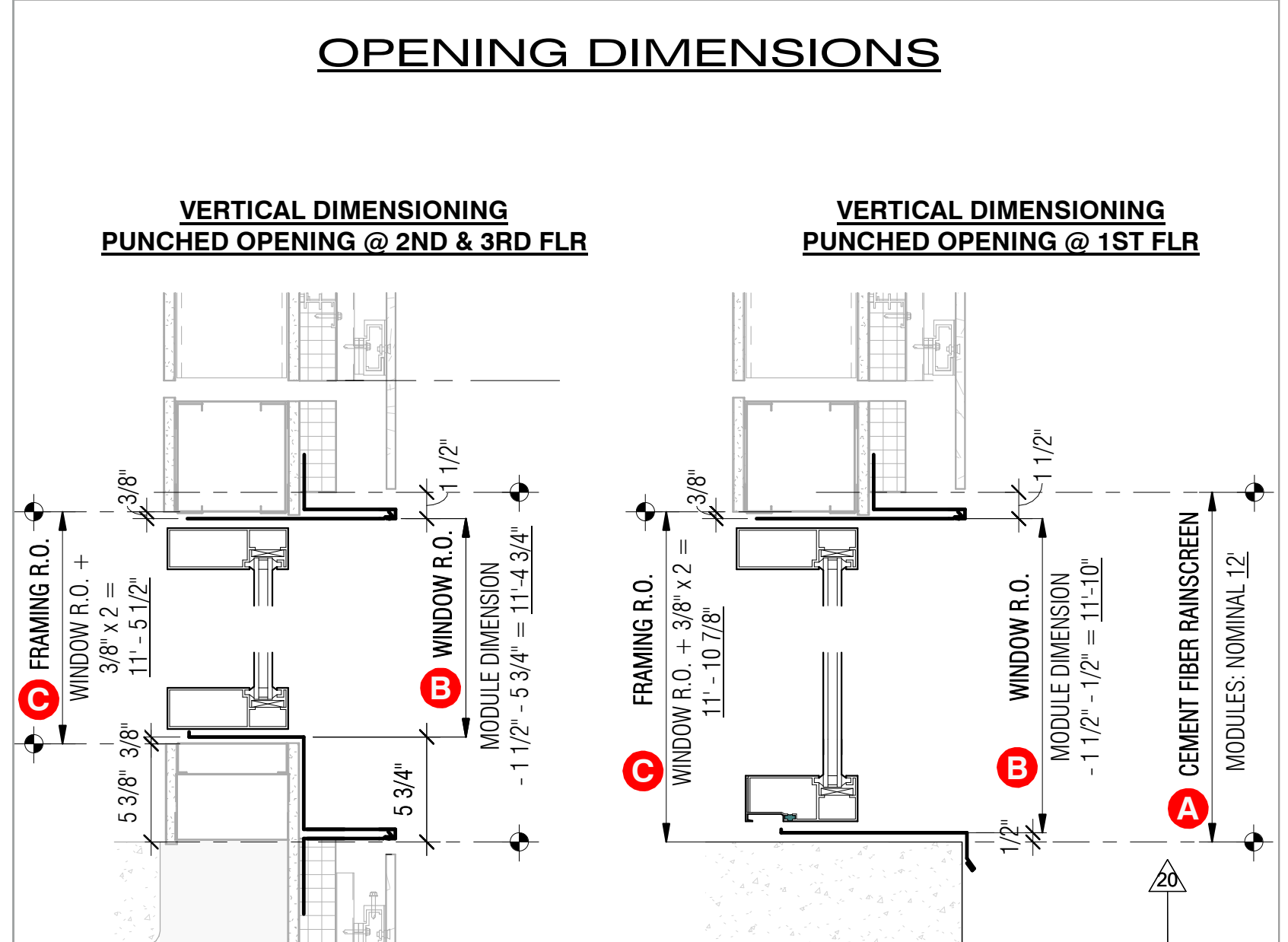
KEY	NOTE
08-12	ELEVATOR DOOR SMOKE CONTAINMENT SYSTEM
09-06	ALIGN PARTITION WITH ADJACENT FINISH
09-07	FURR OUT PARTITION TO ALIGN WITH ADJACENT FINISH
09-08	ALIGN FINISH FACE OF PARTITION WITH BRIDGE
11-02	WALL-MOUNTED PROJECTOR
21-02	SEE FIRE PROTECTION DRAWINGS

- GENERAL NOTES**
- SEE STRUCTURAL DRAWINGS FOR TYPICAL FRAMING DETAILS
 - TYPICAL DIMENSION START POINT IS FROM GRIDLINE
 - INTERIOR PARTITION DIMENSIONS ARE TO FACE OF STUD, UNON
 - INTERIOR PARTITIONS ARE FULL HEIGHT TO UNDERSIDE OF FLOOR/ROOF TYP. UNON
 - INTERIOR PARTITIONS ARE TYPE A WITH FRAMING SIZE OF 3 5/8" AND ACOUSTIC INSULATION TYP. UNON
 - FOR INTERIOR PARTITION TYPES, SEE SHEET A8.10
 - FOR TYPICAL CODE REQUIRED DOOR CLEARANCES, SEE SHEET G3.21
 - ALL DOORS ARE LOCATED 4" FROM ADJACENT WALL FINISH AT HINGE SIDE, UNON
 - REFER TO FLOOR PLANS FOR DOOR NUMBERS, AND ENLARGED PLAN AND INTERIOR ELEVATION CALLOUTS
 - REFER TO CIVIL SITE GRADING PLAN PHASE 2 FOR ADDITIONAL INFORMATION
 - ALL COLUMNS TO BE FURRED, UNON. COLUMN FURRING IS PARTITION TYPE C UNLESS OTHERWISE INDICATED
 - DOORS TO BE LOCATED 4" AWAY FROM ADJACENT WALL, TYP. UNON
 - FOR PARTITIONS AND CASEWORK ADJACENT TO FURRED-OUT COLUMNS, ALIGN FINISH FACE, TYP. UNON
 - FOR FLOOR RECEPTACLE DETAIL, SEE DETAIL
 - FOR MARKERBOARD AND TACKBOARD MOUNTS, A8.62 TO DETAIL 8 / A8.62

NO.	DATE	DESCRIPTION
20	05/15/2019	CCD 20
25	06/21/2019	CCD 25
42	09/09/2019	CCD 42
45	09/31/2019	CCD 45
47	10/18/2019	CCD 47
49	10/23/2019	CCD 49
52	10/23/2019	CCD 52
43	01/10/2020	CCD 43
65	04/15/2020	CCD 65



1 THIRD FLOOR PLAN
1/8" = 1'-0"



SURFACE LEGEND

MARKERBOARD SURFACE	MIRROR SURFACE	
SEE DETAIL B / A8.62	LENGTH X WIDTH	
LENGTH X WIDTH	(R1) 3'-6" x 6'	
(M1) 8' x 4'		
(M2) 8'x4', 8'x5'		
(M3) 8'x4', 8'x5', 8'x4'		
(M4) 8' x 5'		
(M5) 4' x 3'		
TACKBOARD SURFACE		
SEE DETAIL B / A8.62	LENGTH X WIDTH	
LENGTH X WIDTH	LENGTH X WIDTH	
(T1) 8' x 4'	(T3) 4' x 6'-10"	(T5) FULL WALL
(T2) 16' x 4'	(T4) 4' x 3', LOCATION TBD	

LAYOUT PLAN LEGEND

□	FLOOR RECEPTACLE, SEE 5 / A8.62 FOR DETAIL
○	FLOOR RECEPTACLE, SEE 5 / A8.62 FOR DETAIL
(ADA)	DOOR ACTUATOR

PARTITION TYPE LEGEND

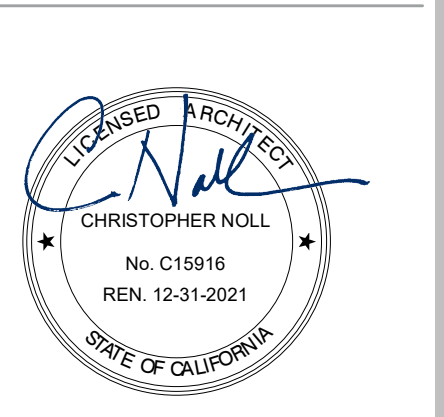
FRAMING SIZE	PARTITION TYPE
10'-10"	"S" INDICATES STRUCTURAL STUDS.
8'-8"	"F" INDICATES FIRE RATED.
6'-6"	
4'-4"	
3'-3 5/8"	INSULATION
2'-2 1/2"	A: ACOUSTICAL

REFER TO SHEET A8.10 FOR INTERIOR PARTITION TYPES

KEYNOTE LEGEND

KEY	NOTE
06-12	ELEVATOR DOOR SMOKE CONTAINMENT SYSTEM
09-06	ALIGN PARTITION WITH ADJACENT FINISH
09-07	FURR OUT PARTITION TO ALIGN WITH ADJACENT FINISH
11-02	WALL-MOUNTED PROJECTOR

- GENERAL NOTES**
- SEE STRUCTURAL DRAWINGS FOR TYPICAL FRAMING DETAILS
 - TYPICAL DIMENSION START POINT IS FROM GRIDLINE
 - INTERIOR PARTITION DIMENSIONS ARE TO FACE OF STUD, UON
 - INTERIOR PARTITIONS ARE FULL HEIGHT TO UNDERSIDE OF FLOOR/ROOF TYP, UON
 - INTERIOR PARTITIONS ARE TYPE A WITH FRAMING SIZE OF 3 5/8" AND ACOUSTIC INSULATION TYP, UON.
 - FOR INTERIOR PARTITION TYPES, SEE SHEET A8.10
 - FOR TYPICAL CODE REQUIRED DOOR CLEARANCES, SEE SHEET A8.21
 - ALL DOORS ARE LOCATED 4" FROM ADJACENT WALL FINISH AT HINGE SIDE, UON
 - REFER TO FLOOR PLANS FOR DOOR NUMBERS, AND ENLARGED PLAN AND INTERIOR ELEVATION CALLOUTS
 - REFER TO CIVIL SITE GRADING PLAN PHASE 2 FOR ADDITIONAL INFORMATION
 - ALL COLUMNS TO BE FURRED, UON. COLUMN FURRING IS PARTITION TYPE C UNLESS OTHERWISE INDICATED
 - DOORS TO BE LOCATED 4" AWAY FROM ADJACENT WALL, TYP, UON
 - FOR PARTITIONS AND CASEWORK ADJACENT TO FURRED-OUT COLUMNS, ALIGN FINISH FACE, TYP, UON
 - FOR FLOOR RECEPTACLE DETAIL, SEE DETAIL
 - FOR MARKERBOARD AND TACKBOARD MOUNTS, A8.62 TO DETAIL B / A8.62



ISSUE TITLE
INCREMENT 2

ISSUE DATE: 20 AUGUST 2019
NOLL & TAM JOB NUMBER: 21701.00

REVISIONS		
NO.	DATE	DESCRIPTION
16	03/17/2019	CCD 16
17	04/18/2019	CCD 17
18	05/01/2019	CCD 18
47	10/18/2019	CCD 47
49	10/22/2019	CCD 49
52	10/23/2019	CCD 52
56	02/14/2020	CCD 56
63	03/31/2020	CCD 63



01 - CEILING PLAN
1/8" = 1'-0"

CEILING LEGEND

	ACP-1 SUSPENDED ACOUSTIC CEILING TILE SYSTEM 24" X 48" PANELS - SEE FINISH SCHEDULE, AND SHEET A8.31 FOR TYPICAL INSTALLATION DETAILS		GBX 1-HR RATED GYPSUM BOARD SOFFIT OR CEILING, CEILING, PAINTED SEE FINISH SCHEDULE AND REFER TO STRUCTURAL DRAWINGS FOR TYPICAL FRAMING DETAILS		RECESSED LIGHT FIXTURE, SEE DETAIL 5 / A8.37
	ACP-2 SUSPENDED ACOUSTIC CEILING TILE SYSTEM 24" X 48" PANELS - HIGH NRC - SEE FINISH SCHEDULE, AND SHEET A8.31 FOR TYPICAL INSTALLATION DETAILS		GBS GYPSUM BOARD CEILING, PAINTED SEE FINISH SCHEDULE AND REFER TO STRUCTURAL DRAWINGS FOR TYPICAL FRAMING DETAILS		RECESSED LIGHT FIXTURE, SEE DETAIL 5 / A8.37
	ACP-3 SUSPENDED ACOUSTICAL CLOUD CEILING SYSTEM PANELS VARY - SEE FINISH SCHEDULE FOR SUSPENSION, SEE 20 / A8.32		OPN-O OPEN TO STRUCTURE, SEE FINISH SCHEDULE		SPEAKER, SEE DETAIL 5 / A8.37 - SIM
	ACP-4 ACOUSTICAL CEILING TILE - VINYL FACED 24" X 48" PANELS - SEE FINISH SCHEDULE, AND SHEET A8.31 FOR TYPICAL INSTALLATION DETAILS		EXTERIOR LINEAR METAL SOFFIT		
	AWP-1 ACOUSTIC WOOD PANEL CEILING TYPE 1 SEE FINISH SCHEDULE, AND SHEET A8.35 FOR TYPICAL INSTALLATION DETAILS				

KEYNOTE LEGEND

KEY	NOTE
05-05	EXPOSED HSS STRUCTURAL COLUMN (W4) - SSD
07-06	INTUMESCENT FIREPROOFING AND FINISH PAINT ON STEEL FRAMING
08-31	ACCESS PANEL - LOCATION APPROXIMATE
09-02	1-HR RATED SOFFIT
09-04	1-HR RATED SOFFIT TO ENCLOSE SHAFT, ABOVE CEILING
09-12	INTUMESCENT PAINT AND FINISH PAINT AT EXTERIOR
11-02	WALL-MOUNTED PROJECTOR

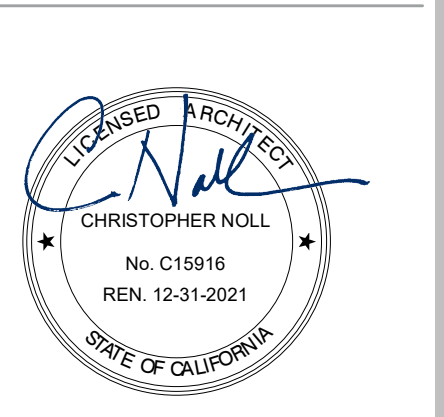
GENERAL NOTES

- SEE ROOM FINISH SCHEDULE FOR ADDITIONAL INFORMATION
- SEE ELECTRICAL DRAWINGS FOR ADDITIONAL INFORMATION
- SEE MECHANICAL DRAWINGS FOR ADDITIONAL INFORMATION
- PROVIDE INTUMESCENT COATINGS AND PAINT AT CANOPY FRAMING, HSS COLUMNS AT LOBBY, AND HSS COLUMN ON ALL FLOORS AT GRIDLINE D & F.2.
- WHERE WF BEAM PENETRATES GWS - CUT GWS TIGHT TO FRAMING, MUD, TAPE & SEAL, PAINT TO MATCH ADJACENT WALL
- ACOUSTIC TILE SHALL BE CENTERED IN ROOM ION
- ALL GYP BD CEILINGS ARE SUSPENDED ION
- PROVIDE MANUAL WINDOW SHADES AT ALL EXTERIOR WINDOWS, IN CLASSROOMS, STUDIOS, AND OFFICE SPACES
- LIGHT FIXTURES ARE GRAPHICALLY REPRESENTED ON RCP, SEE LIGHTING DRAWINGS. FINAL LOCATION TO BE CONFIRMED DURING CONSTRUCTION. REFER TO DETAIL 1 / A8.62
- FOR CEILING MOUNTED PROJECTOR MOUNTING, REFER TO DETAIL 1 / A8.62
- FOR WALL MOUNTED PROJECTOR SCREEN MOUNTING, REFER TO DETAIL 6 / A8.62
- DETERMINE AND VERIFY LOCATION OF ACCESS PANELS IN THE FIELD



PROJECT TITLE
PERALTA COMMUNITY COLLEGE DISTRICT
COLLEGE OF ALAMEDA
NEW CENTER FOR LIBERAL ARTS
555 RALPH APPEZZATO MEMORIAL PARKWAY
ALAMEDA, CALIFORNIA

APPROVALS
FILE NUMBER: 1-C1
DIVISION OF THE STATE ARCHITECT
APP # 02 01-117058
ACS: FLS: SSS:
Date:



ISSUE TITLE
INCREMENT 2

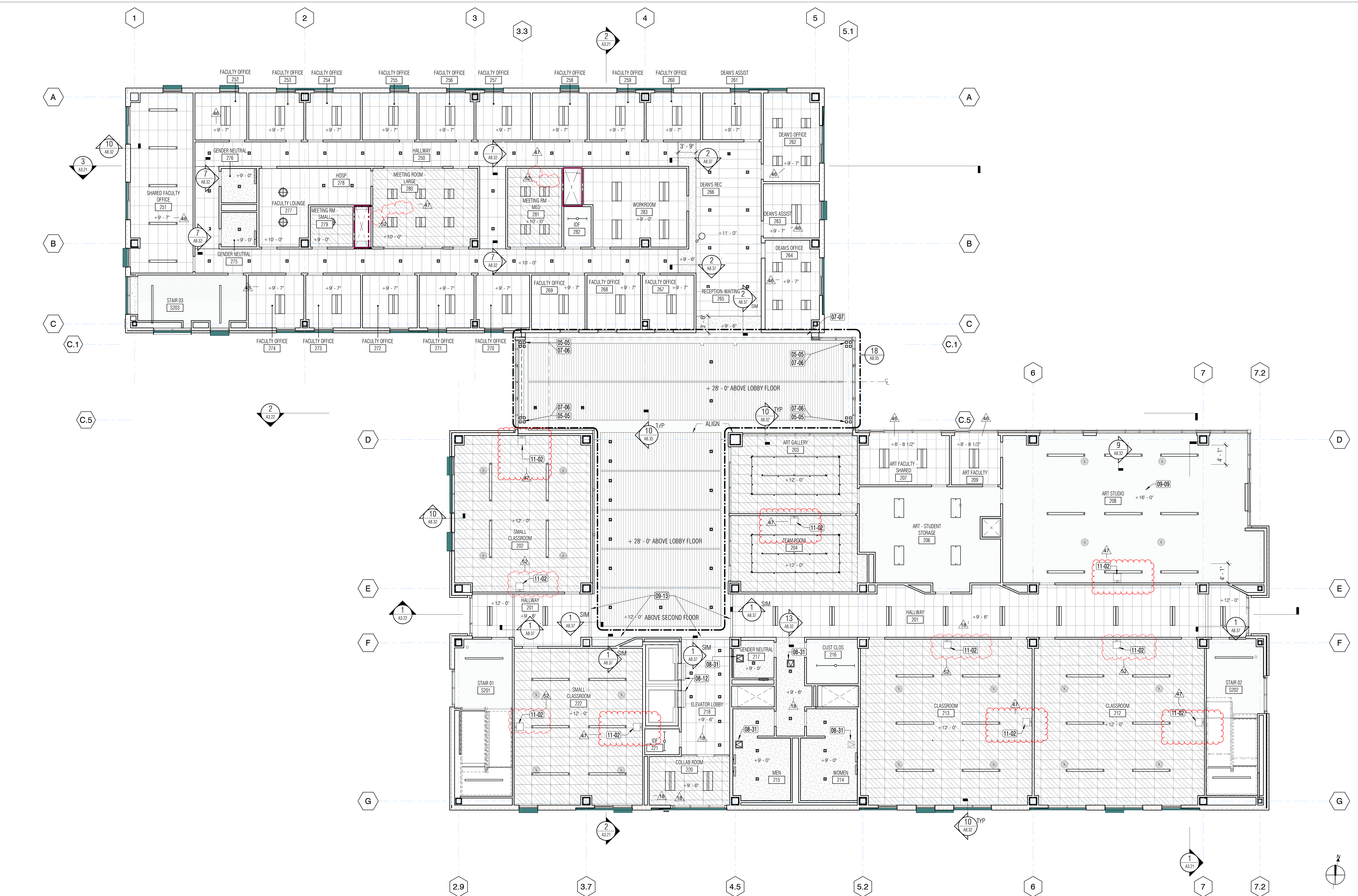
ISSUE DATE **20 AUGUST 2019**
NOLL & TAM JOB NUMBER **21701.00**

REVISIONS		
NO.	DATE	DESCRIPTION
18	05/01/2019	CCD 18
46	09/19/2019	CCD 46
47	10/18/2019	CCD 47
52	10/23/2019	CCD 52
63	03/31/2020	CCD 63

SHEET TITLE
REFLECTED CEILING PLAN- 2ND FLOOR

SHEET NUMBER

A2.42



02 - CEILING PLAN
1/8" = 1'-0"

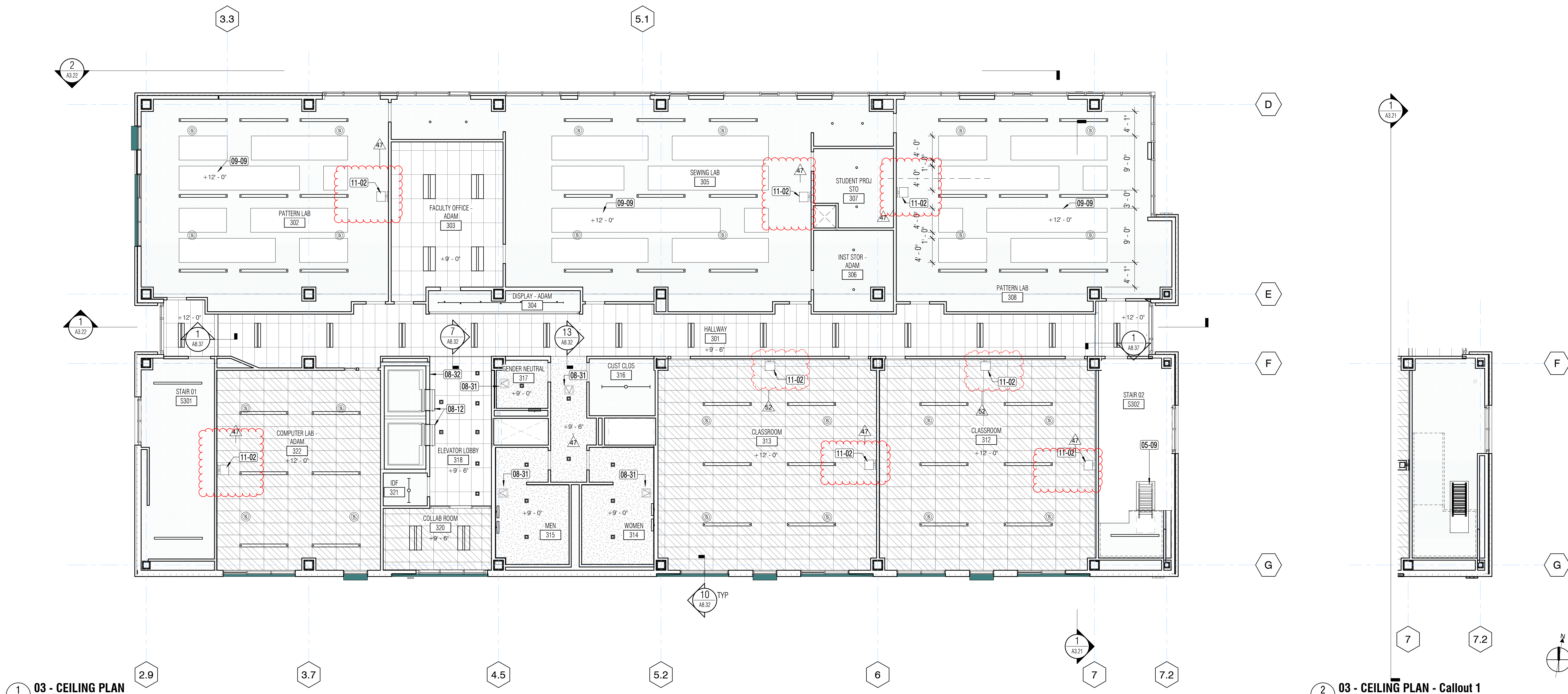
CEILING LEGEND

	ACP-1 SUSPENDED ACOUSTIC CEILING TILE SYSTEM 24" X 48" PANELS - SEE FINISH SCHEDULE, AND SHEET A8.31 FOR TYPICAL INSTALLATION DETAILS		GB4X 1-HR RATED GYPSUM BOARD SOFFIT OR CEILING, CEILING, PAINTED SEE FINISH SCHEDULE AND REFER TO STRUCTURAL DRAWINGS FOR TYPICAL FRAMING DETAILS		RECESSED LIGHT FIXTURE, SEE DETAIL 5 / A8.37
	ACP-2 SUSPENDED ACOUSTIC CEILING TILE SYSTEM 24" X 48" PANELS - HIGH NRC - SEE FINISH SCHEDULE, AND SHEET A8.31 FOR TYPICAL INSTALLATION DETAILS		GBS GYPSUM BOARD CEILING, PAINTED SEE FINISH SCHEDULE AND REFER TO STRUCTURAL DRAWINGS FOR TYPICAL FRAMING DETAILS		RECESSED LIGHT FIXTURE, SEET DETAIL 5 / A8.37
	ACP-3 SUSPENDED ACOUSTICAL CLOUD CEILING SYSTEM PANELS VARY - SEE FINISH SCHEDULE		OPN-0 OPEN TO STRUCTURE. SEE FINISH SCHEDULE		SPEAKER, SEE DETAIL 5 / A8.37, SIM
	ACP-4 ACOUSTICAL CEILING TILE - VINYL FACED 24" X 48" PANELS - SEE FINISH SCHEDULE, AND SHEET A8.31 FOR TYPICAL INSTALLATION DETAILS		EXTERIOR LINEAR METAL SOFFIT		
	AWP-1 ACOUSTIC WOOD PANEL CEILING TYPE 1 SEE FINISH SCHEDULE, AND SHEET A8.35 FOR TYPICAL INSTALLATION DETAILS				

KEYNOTE LEGEND	
KEY	NOTE
05-05	EXPOSED HSS STRUCTURAL COLUMN (x4) - SSD
07-06	INTUMESCENT FIREPROOFING AND FINISH PAINT ON STEEL FRAMING
07-07	SEISMIC JOINT ASSEMBLY, PREFINISHED - VERTICAL AND HORIZONTAL, SSD
08-12	ELEVATOR DOOR SMOKE CONTAINMENT SYSTEM
08-31	ACCESS PANEL - LOCATION APPROXIMATE
09-09	SUSPENDED GYP CLOUD CEILING, TYP
09-13	EXTEND GYP BOARD TO UNDERSIDE OF ROOF DECK ON SIDE FACING WOOD CEILING, PAINT.
11-02	WALL-MOUNTED PROJECTOR

GENERAL NOTES

- SEE ROOM FINISH SCHEDULE FOR ADDITIONAL INFORMATION
- SEE ELECTRICAL DRAWINGS FOR ADDITIONAL INFORMATION
- SEE MECHANICAL DRAWINGS FOR ADDITIONAL INFORMATION
- PROVIDE INTUMESCENT COATING AND PAINT AT CANOPY FRAMING, HSS COLUMNS AT LOBBY, AND HSS COLUMN ON ALL FLOORS AT GRIDLINE D & 7.2.
- WHERE WF BEAM PENETRATES GWB - CUT GWB TIGHT TO FRAMING, MUD, TAPE & SEAL. PAINT TO MATCH ADJACENT WALL.
- ACOUSTIC TILE SHALL BE CENTERED IN ROOM UNON
- ALL GYP BD CEILINGS ARE SUSPENDED UNON
- PROVIDE MANUAL WINDOW SHADES AT ALL EXTERIOR WINDOWS IN CLASSROOMS, STUDIOS, AND OFFICE SPACES
- LIGHT FIXTURES ARE GRAPHICALLY REPRESENTED ON RCP. SEE LIGHTING DRAWINGS. FINAL LOCATION TO BE CONFIRMED DURING CONSTRUCTION.
- FOR CEILING MOUNTED PROJECTOR MOUNTING, REFER TO DETAIL 1 / A8.62
- FOR WALL MOUNTED PROJECTOR SCREEN MOUNTING, REFER TO DETAIL 6 / A8.62
- DETERMINE AND VERIFY LOCATION OF ACCESS PANELS IN THE FIELD



03 - CEILING PLAN
1/8" = 1'-0"

03 - CEILING PLAN - Callout 1
1/8" = 1'-0"

CEILING LEGEND

<p>ACP-1 SUSPENDED ACOUSTIC CEILING TILE SYSTEM 24" X 48" PANELS - SEE FINISH SCHEDULE, AND SHEET A8.31 FOR TYPICAL INSTALLATION DETAILS</p> <p>ACP-2 SUSPENDED ACOUSTIC CEILING TILE SYSTEM 24" X 48" PANELS - HIGH NRC - SEE FINISH SCHEDULE, AND SHEET A8.31 FOR TYPICAL INSTALLATION DETAILS</p> <p>ACP-3 SUSPENDED ACOUSTICAL CLOUD CEILING SYSTEM PANELS VARY - SEE FINISH SCHEDULE FOR SUSPENSION, SEE 20 / A8.32</p> <p>ACP-4 ACOUSTICAL CEILING TILE - VINYL FACED 24" X 48" PANELS - SEE FINISH SCHEDULE, AND SHEET A8.31 FOR TYPICAL INSTALLATION DETAILS</p> <p>AWP-1 ACOUSTIC WOOD PANEL CEILING TYPE 1 SEE FINISH SCHEDULE, AND SHEET A8.35 FOR TYPICAL INSTALLATION DETAILS</p>	<p>GBX 1-HR RATED GYPSUM BOARD SOFFIT OR CEILING, CEILING, PAINTED SEE FINISH SCHEDULE AND REFER TO STRUCTURAL DRAWINGS FOR TYPICAL FRAMING DETAILS</p> <p>GBS GYPSUM BOARD CEILING, PAINTED SEE FINISH SCHEDULE AND REFER TO STRUCTURAL DRAWINGS FOR TYPICAL FRAMING DETAILS</p> <p>OPN-0 OPEN TO STRUCTURE, SEE FINISH SCHEDULE</p> <p>EXTERIOR LINEAR METAL SOFFIT</p>	<p>RECESSED LIGHT FIXTURE, SEE DETAIL 5 / A8.37</p> <p>PENDANT LIGHT FIXTURE, SEE DETAIL 4 / A8.37</p> <p>RECESSED LIGHT FIXTURE, SEE DETAIL 5 / A8.37</p> <p>SPEAKER, SEE DETAIL 5 / A8.37, SIM</p>
---	--	--

KEYNOTE LEGEND

KEY	NOTE
05-09	PREASSEMBLED ALUMINUM SHIP STAIRS WITH SLIP RESISTANT TEXTURED METAL TREADS
08-12	ELEVATOR DOOR SMOKE CONTAINMENT SYSTEM
08-31	ACCESS PANEL - LOCATION APPROXIMATE
08-32	FIRE RATED ACCESS PANEL - 18x18, ABOVE CEILING
09-09	SUSPENDED GYP CLOUD CEILING, TYP
11-02	WALL-MOUNTED PROJECTOR

GENERAL NOTES

- SEE ROOM FINISH SCHEDULE FOR ADDITIONAL INFORMATION
- SEE ELECTRICAL DRAWINGS FOR ADDITIONAL INFORMATION
- SEE MECHANICAL DRAWINGS FOR ADDITIONAL INFORMATION
- PROVIDE INTUMESCENT COATING AND PAINT AT CANOPY FRAMING, HSS COLUMNS AT LOBBY, AND HSS COLUMN ON ALL FLOORS AT GRIDLINE D & 7.2.
- WHERE WF BEAM PENETRATES GWB - CUT GWB TIGHT TO FRAMING, MUD, TAPE & SEAL, PAINT TO MATCH ADJACENT WALL
- ACOUSTIC TILE SHALL BE CENTERED IN ROOM UON
- ALL GYP BD CEILINGS ARE SUSPENDED UON
- PROVIDE MANUAL WINDOW SHADES AT ALL EXTERIOR WINDOWS IN CLASSROOMS, STUDIOS, AND OFFICE SPACES
- LIGHT FIXTURES ARE GRAPHICALLY REPRESENTED ON RCP, SEE LIGHTING DRAWINGS. FINAL LOCATION TO BE CONFIRMED DURING CONSTRUCTION.
- FOR CEILING MOUNTED PROJECTOR MOUNTING, REFER TO DETAIL 1 / A8.62
- FOR WALL MOUNTED PROJECTOR SCREEN MOUNTING, REFER TO DETAIL 6 / A8.62
- DETERMINE AND VERIFY LOCATION OF ACCESS PANELS IN THE FIELD

PROJECT TITLE
PERALTA COMMUNITY COLLEGE DISTRICT

COLLEGE OF ALAMEDA
NEW CENTER FOR LIBERAL ARTS

555 RALPH APPEZZATO
MEMORIAL PARKWAY
ALAMEDA, CALIFORNIA

APPROVALS

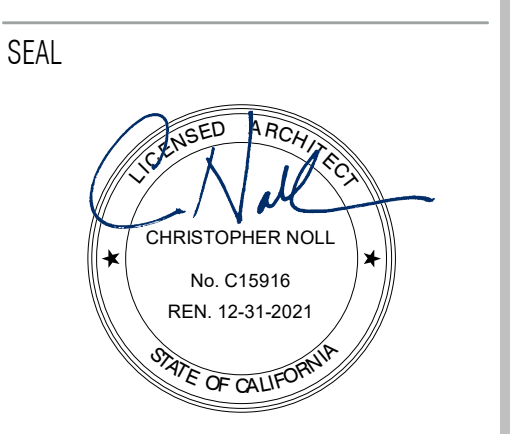
FILE NUMBER: 1-C1

DIVISION OF THE STATE ARCHITECT

APP # 02 01-117058

ACS: FLS: SSS:

Date:



ISSUE TITLE
INCREMENT 2

ISSUE DATE **20 AUGUST 2019**

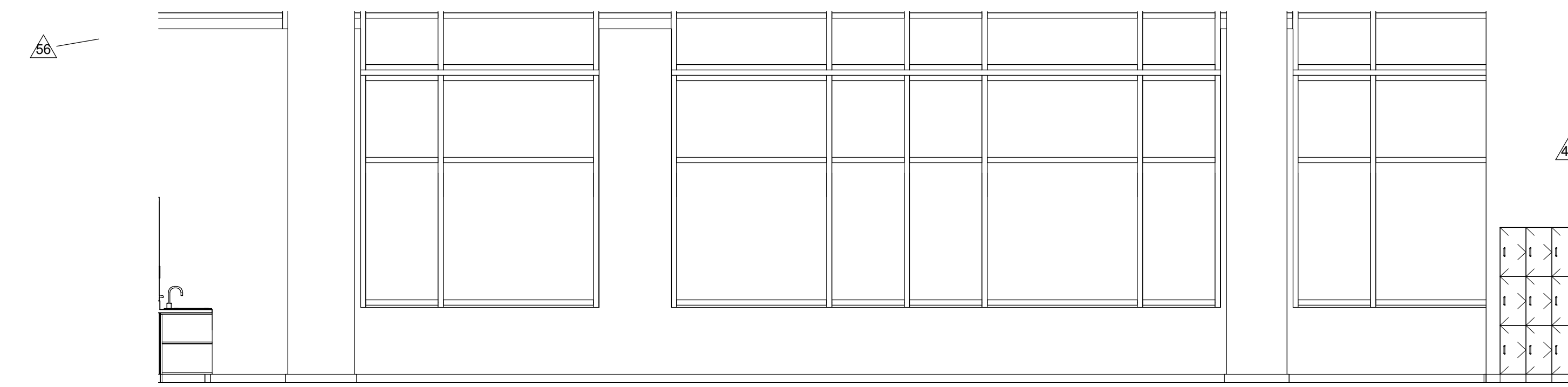
NOLL & TAM JOB NUMBER **21701.00**

REVISIONS

NO.	DATE	DESCRIPTION
47	10/18/2019	CCD 47
52	10/23/2019	CCD 52

SHEET TITLE
REFLECTED CEILING PLAN- 3RD FLOOR

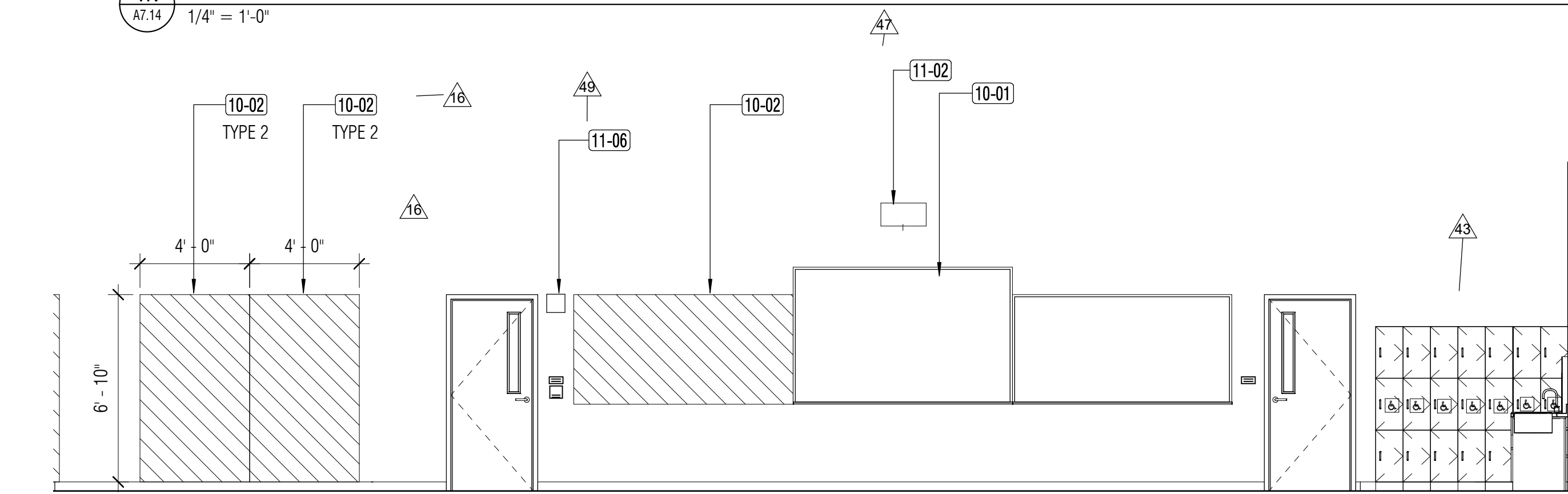
SHEET NUMBER
A2.43



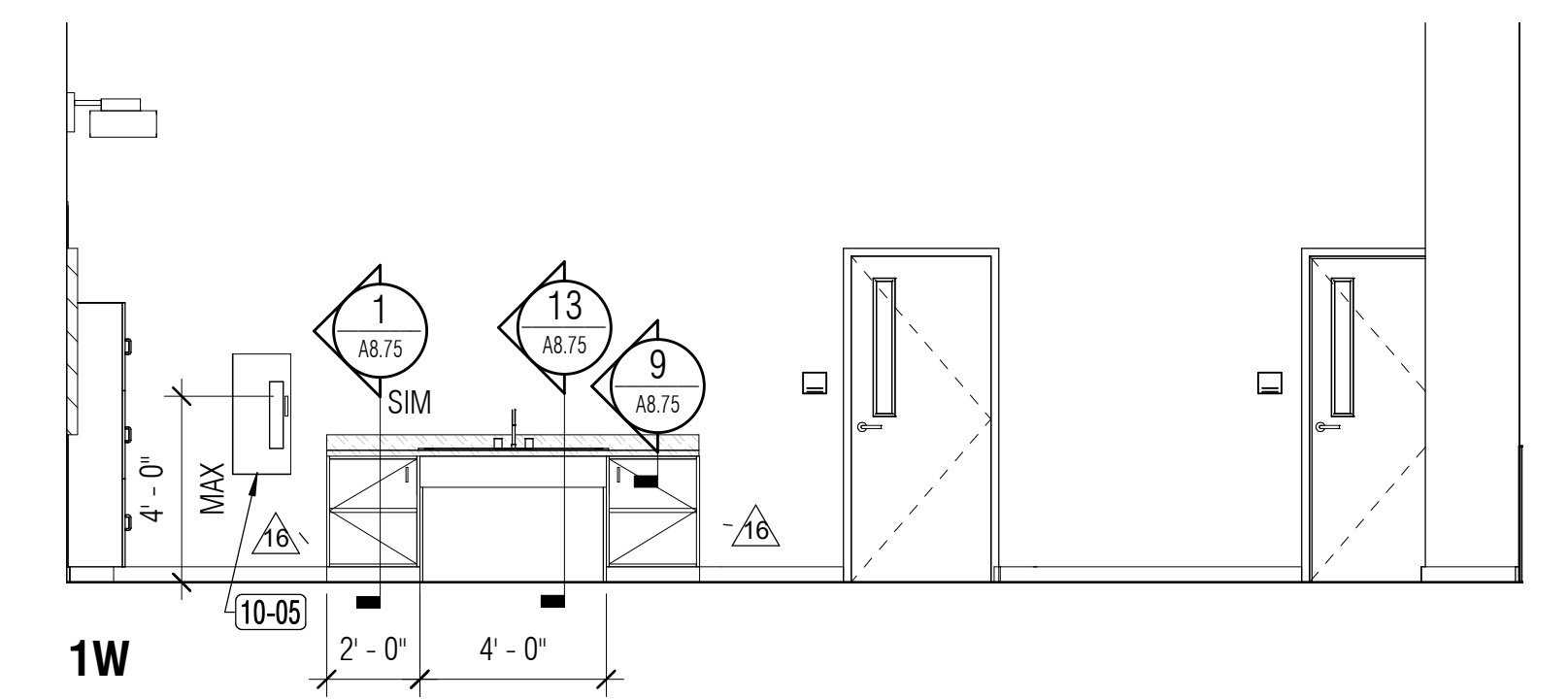
1N
208 ART STUDIO
A7.14 1/4" = 1'-0"



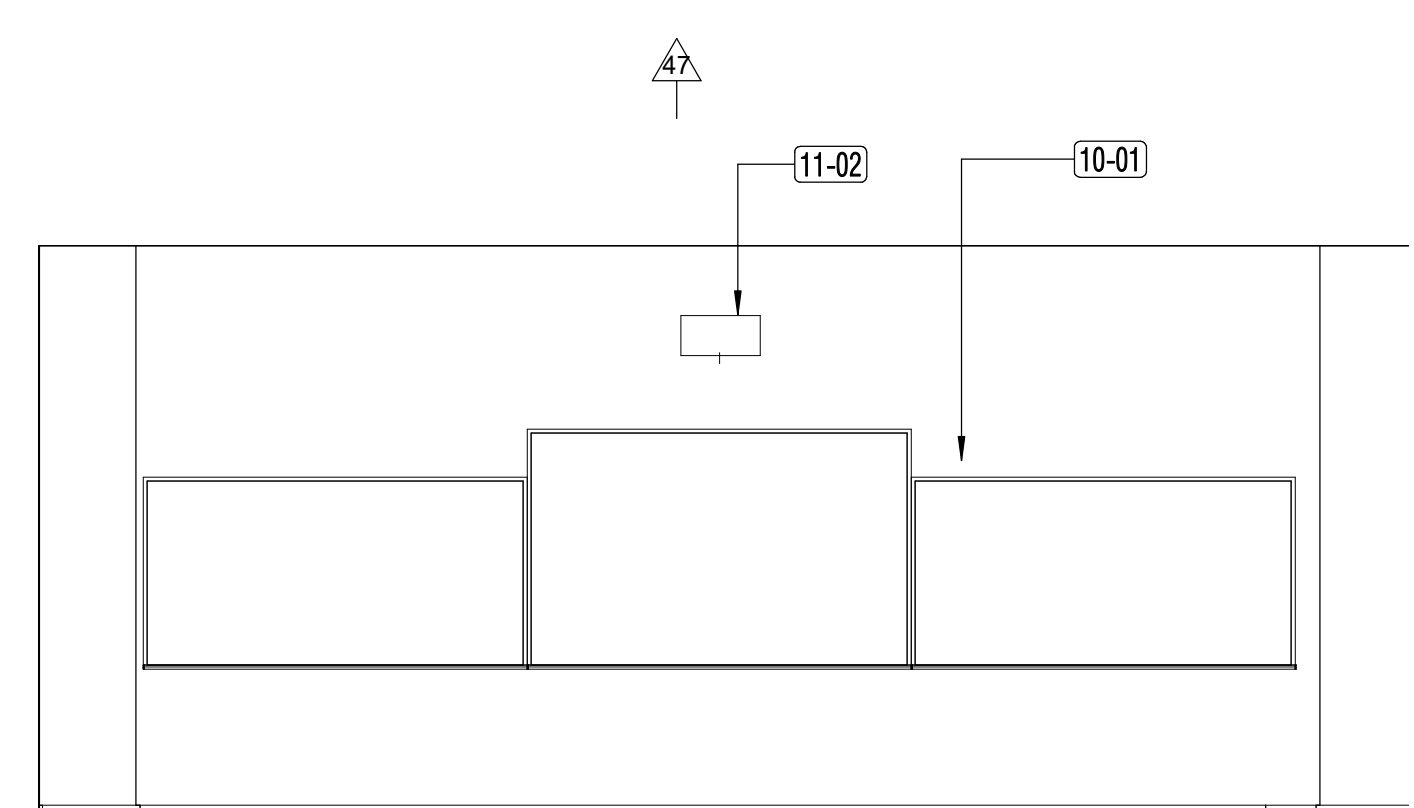
1E



1S
208 ART STUDIO
A7.14 1/4" = 1'-0"



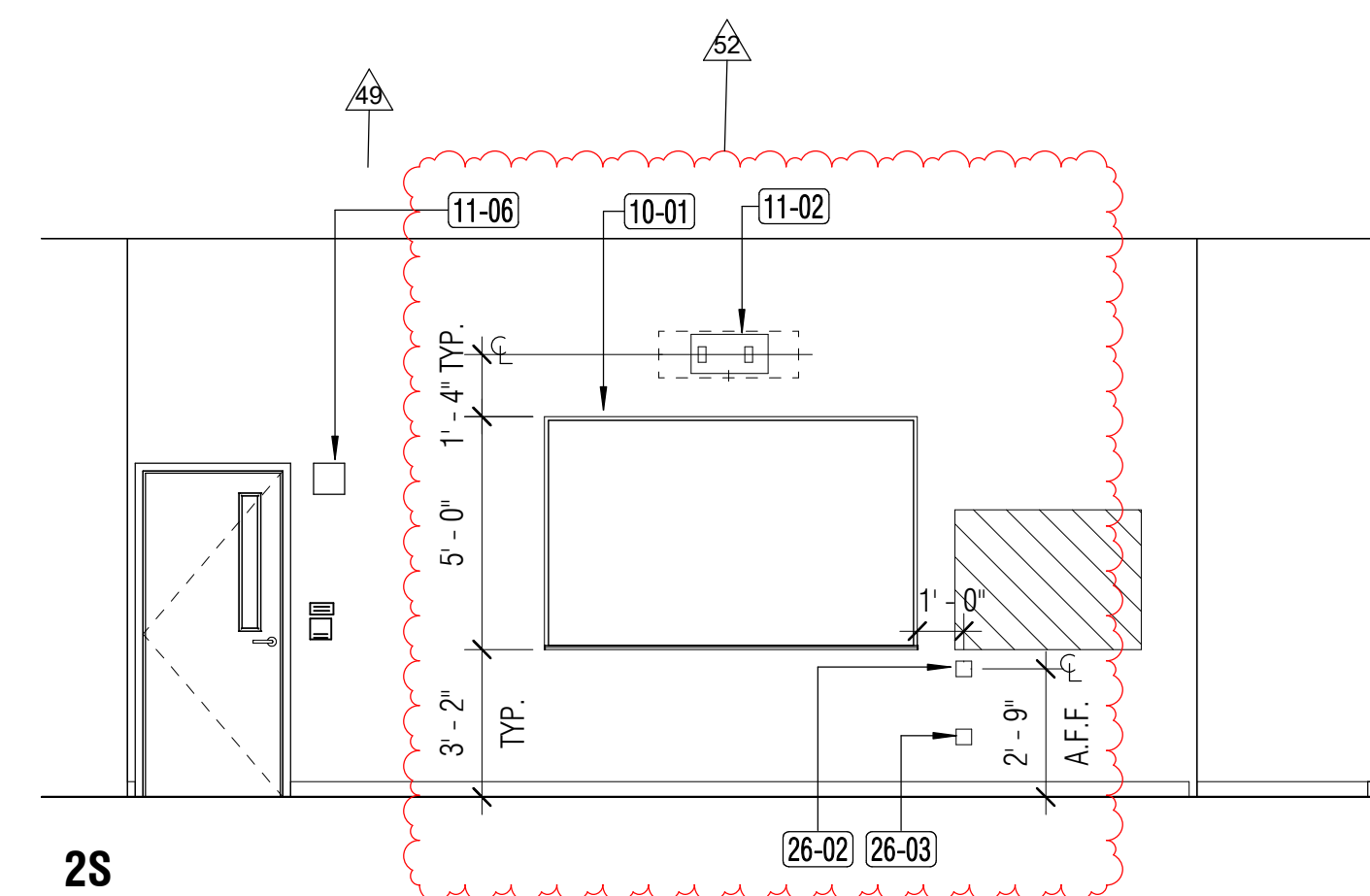
1W



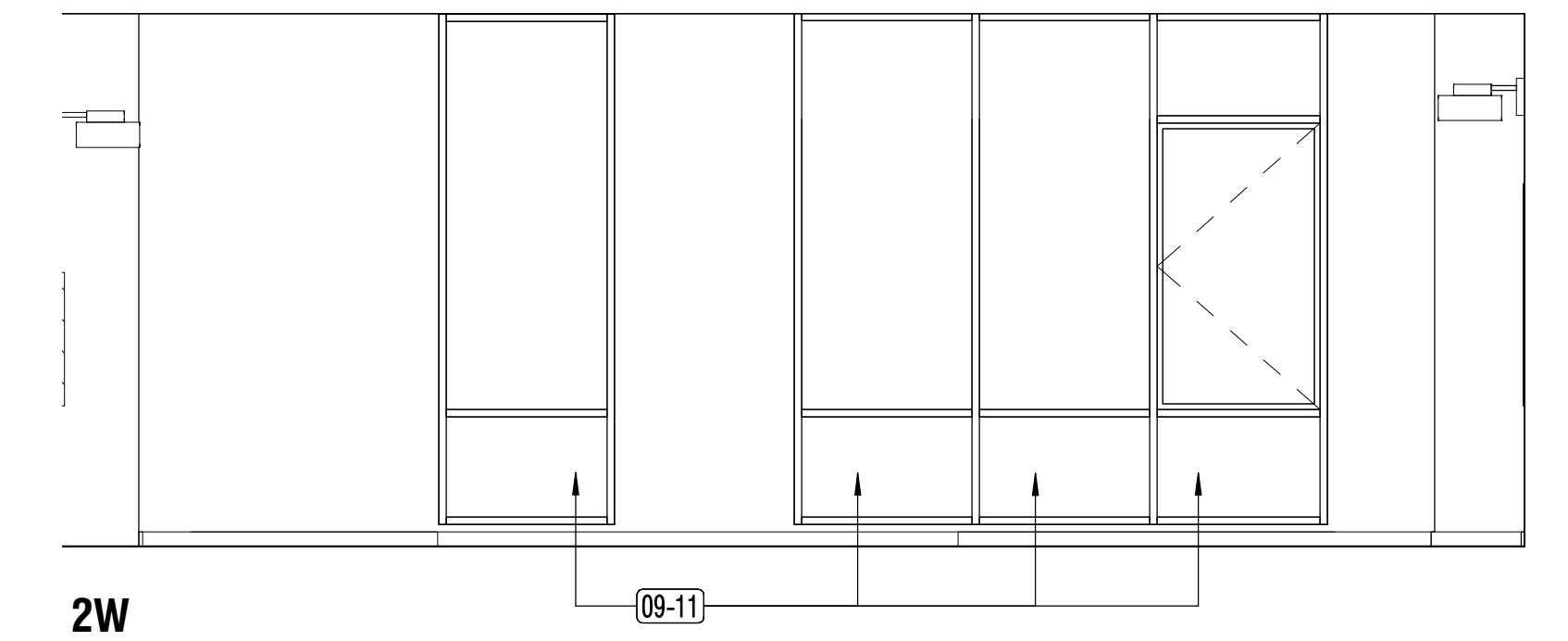
2N
202 CLASSROOM
A7.14 1/4" = 1'-0"



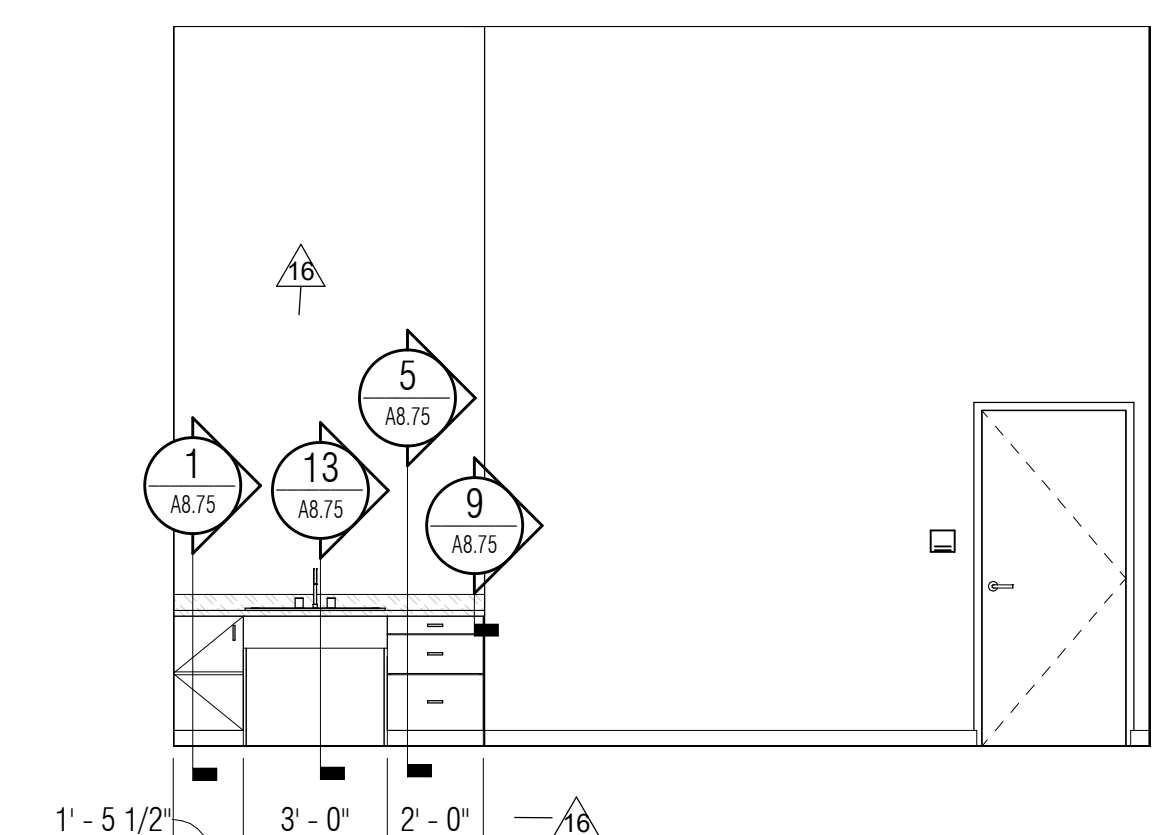
2E



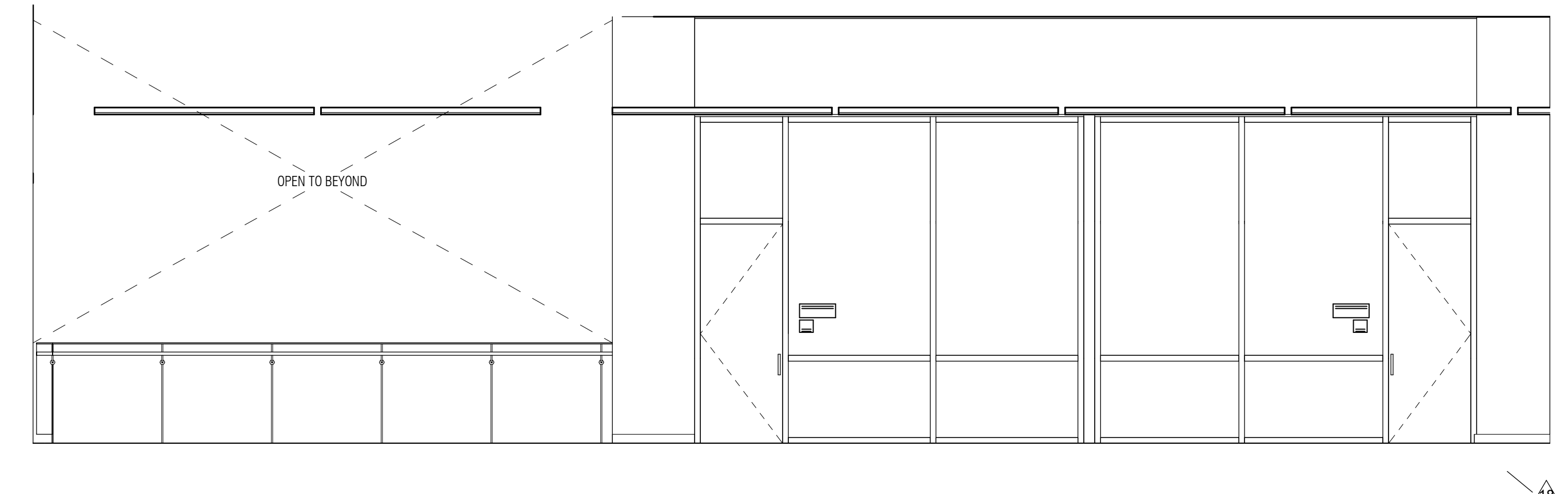
2S



2W



1
206 ART STUDENT STORAGE - W
A7.14 1/4" = 1'-0"



3
201A BRIDGE - E
A7.14 1/4" = 1'-0"

PROJECT TITLE
PERALTA COMMUNITY COLLEGE DISTRICT
COLLEGE OF ALAMEDA
NEW CENTER FOR LIBERAL ARTS
555 RALPH APPEZZATO
MEMORIAL PARKWAY
ALAMEDA, CALIFORNIA

APPROVALS
FILE NUMBER: 1-C1
DIVISION OF THE STATE ARCHITECT
APP # 02 01-117058
ACS: FLS: SSS
Date:

SEAL
LICENSED ARCHITECT
CHRISTOPHER NOLL
No. C15916
REN. 12-31-2021
STATE OF CALIFORNIA

ISSUE TITLE
INCREMENT 2

ISSUE DATE **20 AUGUST 2019**

NOLL & TAM JOB NUMBER **21701.00**

NO.	DATE	DESCRIPTION
16	03/17/2019	CCD 16
18	05/01/2019	CCD 18
47	10/18/2019	CCD 47
49	10/22/2019	CCD 49
52	10/23/2019	CCD 52
43	01/10/2020	CCD 43
56	02/14/2020	CCD 56

SHEET TITLE
INTERIOR ELEVATIONS - 2ND FLOOR

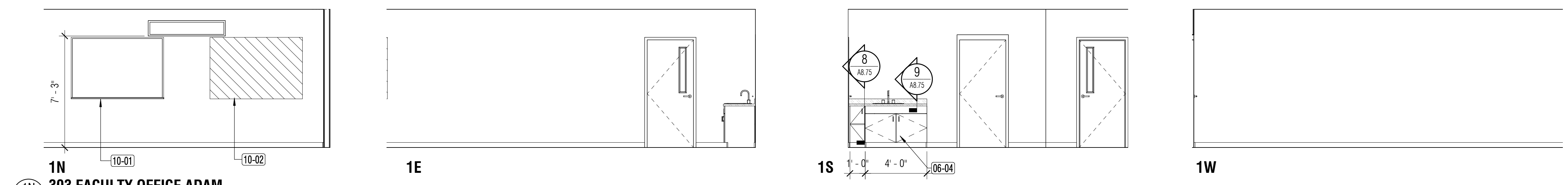
SHEET NUMBER

A7.14

KEY	NOTE
09-11	SWB INFILL @ STOREFRONT
10-01	MARKERBOARD
10-02	TACKBOARD
10-05	FIRE EXTINGUISHER CABINET
11-02	WALL-MOUNTED PROJECTOR
11-06	CLOCK/PA SYSTEM
26-02	EXTRON CONTROLLER
26-03	EXTRON WALL PLATE @ TYP. OUTLET HEIGHT

SHEET NOTES

- REFER TO 8 / A8.62 FOR MARKERBOARD/TACKBOARD DETAILS
- REFER TO LAYOUT PLAN TO LOCATE MARKERBOARD/TACKBOARD
- FOR SIGNAGE REFER TO SHEET A9.16
- FOR STAIR SEATING DETAILS SEE SHEET A4.16
- FOR CEILING MOUNTED PROJECTOR MOUNTING, REFER TO DETAIL 1 / A8.62
- FOR WALL MOUNTED PROJECTOR SCREEN MOUNTING, REFER TO DETAIL 6 / A8.62
- FOR ACCESSIBLE STORAGE LOCKERS, REFER TO DETAIL 19 / G3.21

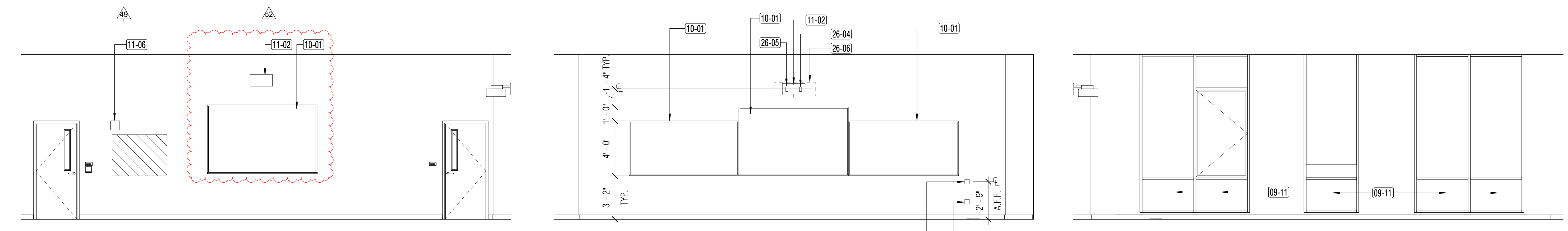


1N
303 FACULTY OFFICE ADAM
1/4" = 1'-0"

1E

1S

1W



2N
CLASSROOM 312
1/4" = 1'-0"

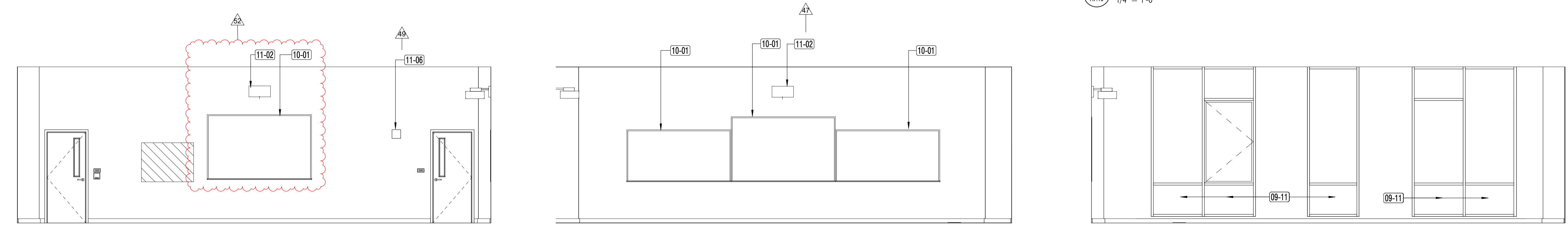
2E

2S

NOTE: DIMENSIONS ARE TYPICAL WHERE AV SYSTEM OCCURS.

26-03 TO ALIGN WITH FLOOR BOX
26-02 TO ALIGN WITH FLOOR BOX

2W
CLASSROOM 312
1/4" = 1'-0"



3N
CLASSROOM 313
1/4" = 1'-0"

3E

3S

3W
CLASSROOM 313
1/4" = 1'-0"

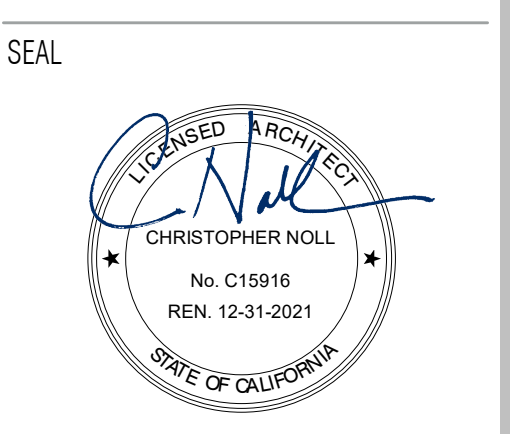
KEY	NOTE
06-04	SOLID SURFACE COUNTERTOP AND PLASTIC LAMINATE LOWER CABINETRY
09-11	SWB INFILL @ STOREFRONT
10-01	MARKERBOARD
10-02	TACKBOARD
11-02	WALL-MOUNTED PROJECTOR
11-06	CLOCK/PA SYSTEM
26-02	EXTRON CONTROLLER
26-03	EXTRON WALL PLATE @ TYP. OUTLET HEIGHT
26-04	AV CABLE ACCESS
26-05	POWER OUTLET
26-06	PROJECTOR BACKING PLATE 1' X 3'

SHEET NOTES

- REFER TO 8 / A8.62 FOR MARKERBOARD/TACKBOARD DETAILS
- REFER TO LAYOUT PLAN TO LOCATE MARKERBOARD/TACKBOARD
- FOR SIGNAGE REFER TO SHEET A9.16
- FOR STAIR SEATING DETAILS SEE SHEET A4.16
- FOR CEILING MOUNTED PROJECTOR MOUNTING, REFER TO DETAIL 1 / A8.62
- FOR WALL MOUNTED PROJECTOR SCREEN MOUNTING, REFER TO DETAIL 6 / A8.62
- FOR ACCESSIBLE STORAGE LOCKERS, REFER TO DETAIL 19 / G3.21

PROJECT TITLE
PERALTA COMMUNITY COLLEGE DISTRICT
COLLEGE OF ALAMEDA
NEW CENTER FOR LIBERAL ARTS
555 RALPH APPEZZATO MEMORIAL PARKWAY ALAMEDA, CALIFORNIA

APPROVALS
FILE NUMBER: 1-C1
DIVISION OF THE STATE ARCHITECT
APP # 02 01-117058
ACS: FLS: SSS:
Date:



ISSUE TITLE
INCREMENT 2
ISSUE DATE: 20 AUGUST 2019
NOLL & TAM JOB NUMBER: 21701.00

REVISIONS		
NO.	DATE	DESCRIPTION
47	10/18/2019	CCD 47
49	10/22/2019	CCD 49
52	10/23/2019	CCD 52
63	03/31/2020	CCD 63

SHEET TITLE
INTERIOR ELEVATIONS - 3RD FLOOR

SHEET NUMBER
A7.15