

### Site Specific Environmental Assessment – Scope of Work

Escambia County is seeking a consultant to conduct a Site-Specific Environmental Assessment of approximately 18-acres located northeast and adjoining Perdido Landfill (see map). The assessment will be conducted in support of a development order application for the County. The Site-Specific Environmental Assessment should be completed in a manner to satisfy Escambia County's Development Review Committee (DRC) permitting process as well as the Land Development Code (LDC) and its associated design standards manual (DSM) requirements.

The assessment should include a survey of environmentally sensitive lands (ESLs) and Natural Resources (NRs) including the following aspects: wetlands, surface water habitats, threatened and endangered species (T&E) or habitats, historical and archaeological resources (H&ARs), as well as a tree survey detailing protected or Heritage type trees. A detailed tree inventory figure will also be required as part of the survey.


A detailed report satisfying DRC permitting and LDC requirements shall be submitted at completion of the assessment to include all appropriate site plans, figures and details as they pertain to the items referenced above.





# NE Borrow Pit

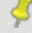
Proposed

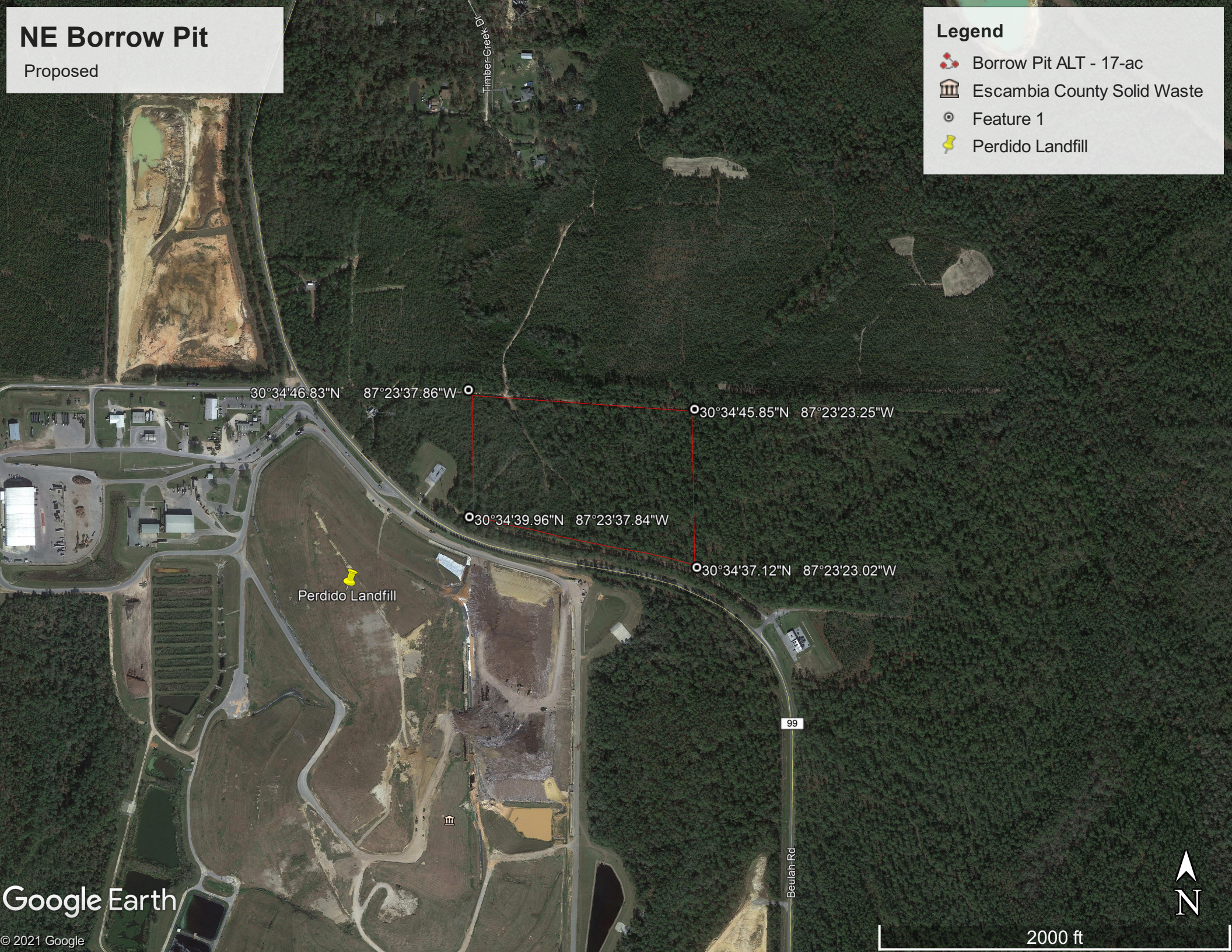
Legend

 Borrow Pit ALT - 17-ac

 Escambia County Solid Waste

 Feature 1

 Perdido Landfill



  
N

  
2000 ft