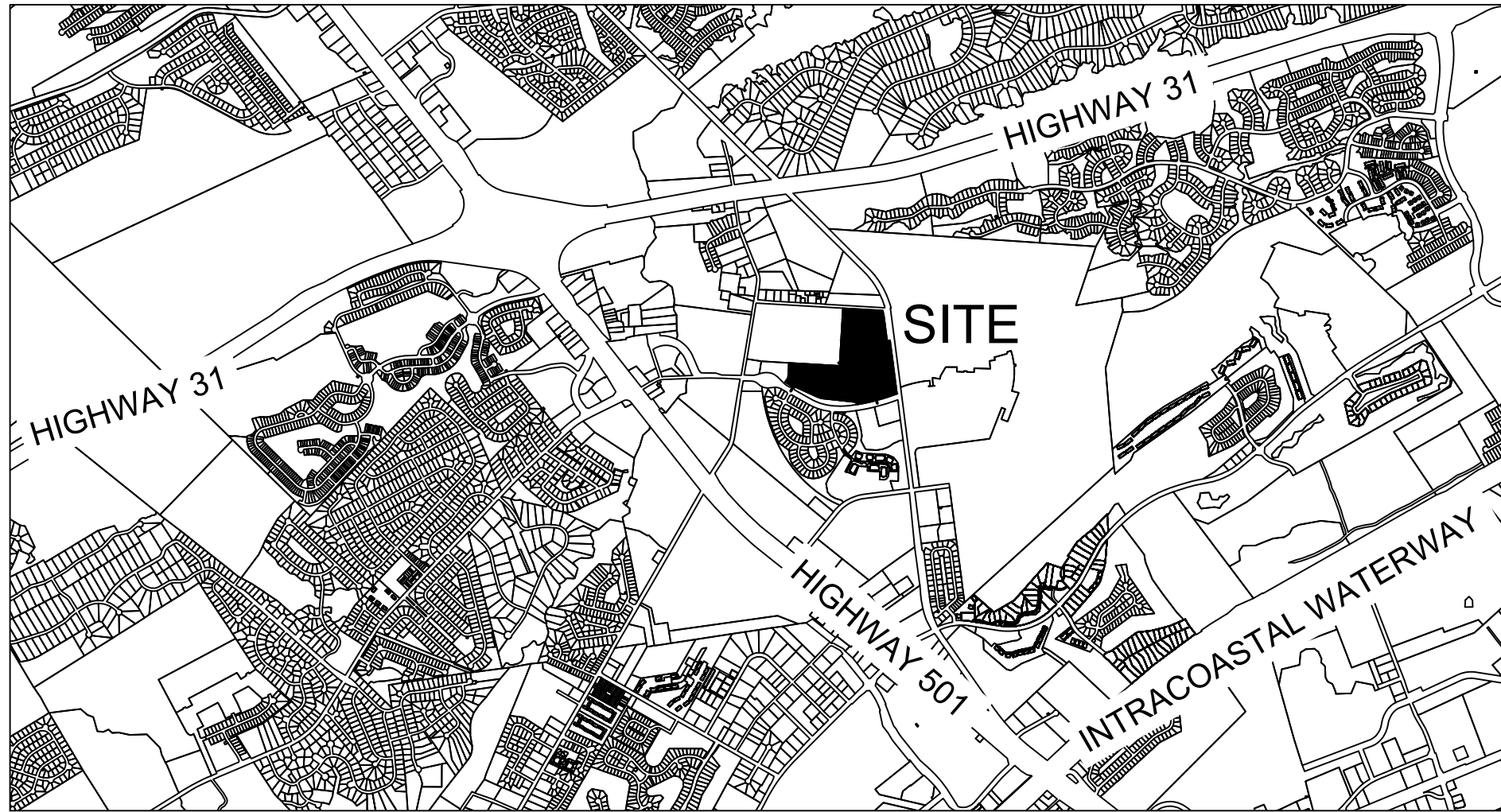
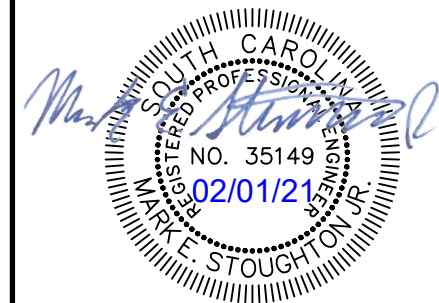


BELLA VITA PHASE 3 - SEWER EXTENSION FOR HORRY COUNTY SCHOOLS

SITE LOCATION HORRY COUNTY, SOUTH CAROLINA



LOCATION MAP / VICINITY MAP
SCALE N.T.S.



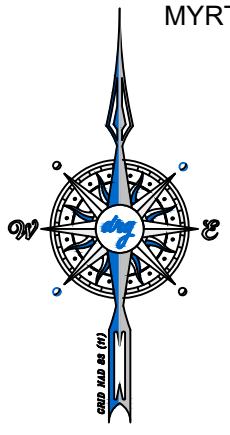
DEVELOPMENT RESOURCE GROUP, LLC
 1101 JOHNSON AVENUE, SUITE 300A
 MYRTLE BEACH, SC 29577
 843-839-3350 | DRGPLLC.COM

COVER

BELLA VITA PHASE 3
SEWER EXTENSION FOR HCS

JOB NO: 20.107
 SCALE: AS NOTED
 DRAWN BY: WAG
 CHECKED BY: MES
 DATE: 02/01/2021
 EXHIBIT NUMBER:

C1



PIN: 418-00-00-0009
TMS: 172-00-03-080
CURRENT OWNER:
MYRTLE BEACH FARMS COMPANY INC

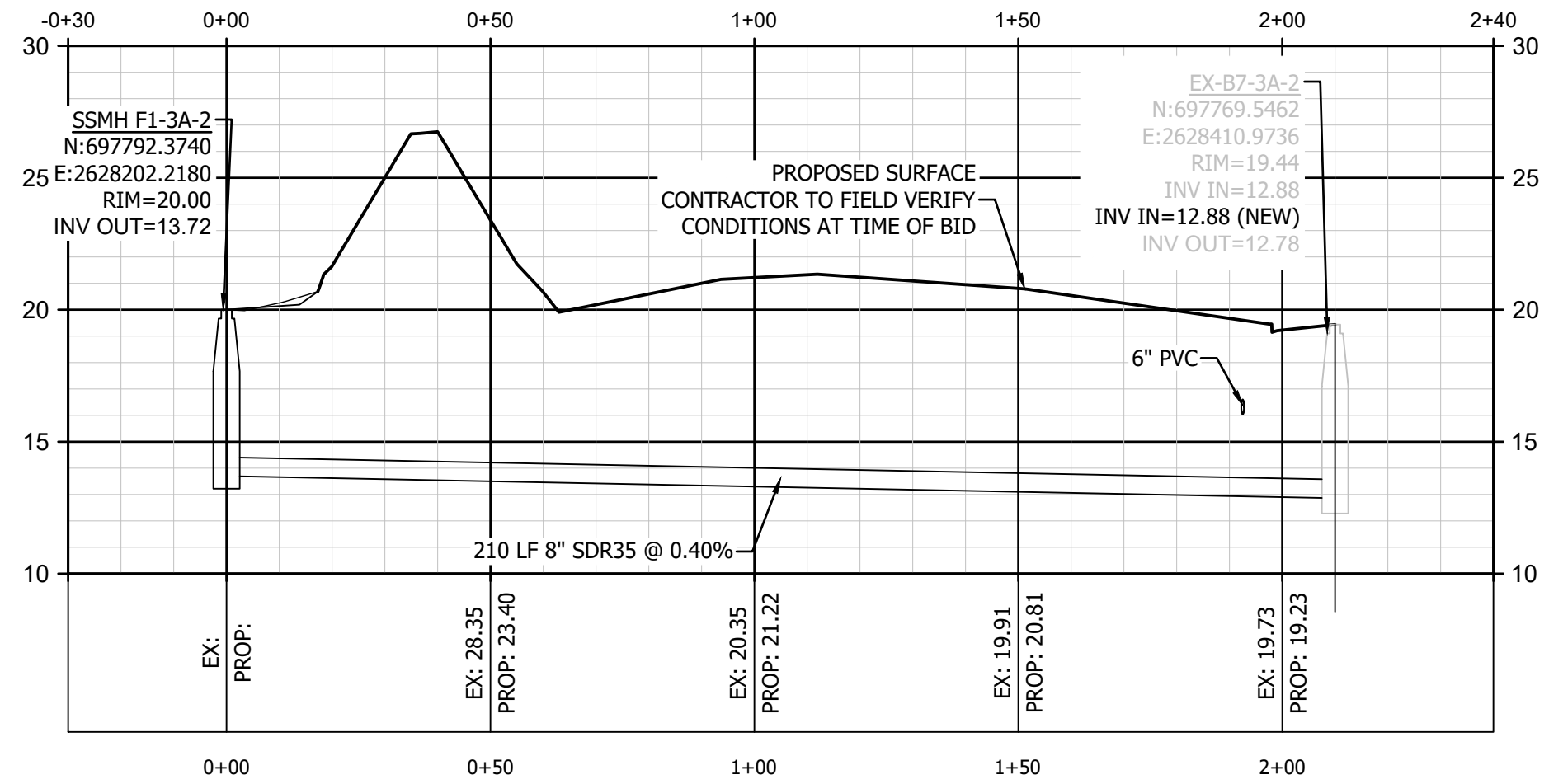
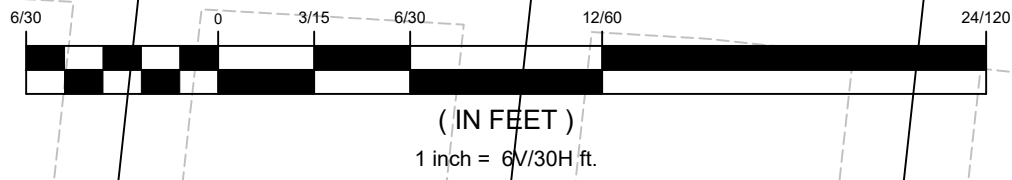
F1-3A-2
N:697792.3740
E:2628202.2180
RIM=20.00
INV OUT=13.72 E

ROADWAY CURRENTLY UNDER CONSTRUCTION
LEVEL OF IMPROVEMENT MAY VARY
CONTRACTOR TO FIELD VERIFY CONDITIONS AT TIME OF BID

210 LF 8" SDR35 @ 0.40%

EX-B7-3A-2
N:697769.5462
E:2628410.9736
RIM=19.44
INV IN=12.88 N
INV IN=12.88 W (NEW)
INV OUT=12.78 S

GRAPHIC SCALE



SEWER F

DEVELOPMENT RESOURCE GROUP, LLC
1101 JOHNSON AVENUE, SUITE 300A
MYRTLE BEACH, SC 29577
843-839-3350 | DRGPLLC.COM



PLAN AND PROFILE

BELLA VITA PHASE 3
SEWER EXTENSION FOR HCS

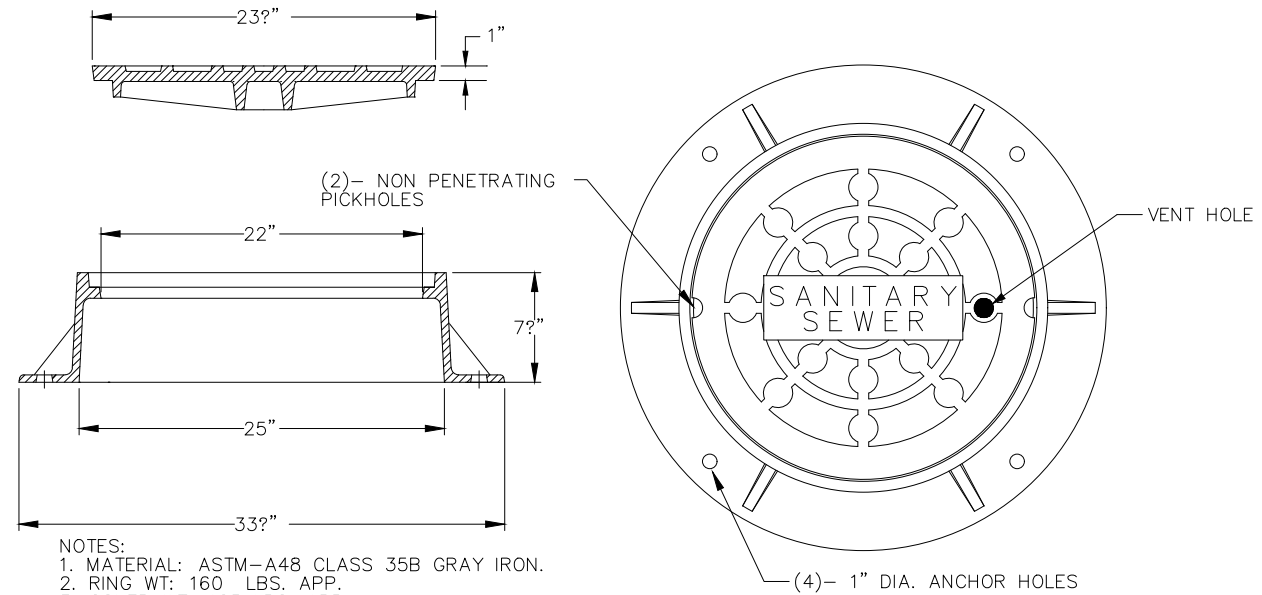
JOB NO:	20.107
SCALE:	AS NOTED
DRAWN BY:	WAG
CHECKED BY:	MES
DATE:	02/01/2021
EXHIBIT NUMBER:	

C2

NOTE:

1. ALL SEWER CONSTRUCTION TO BE COMPLETED IN ACCORDANCE WITH CURRENTLY OPEN SEWER PERMIT WW042203. COPY OF PERMIT AND SPECIFICATIONS CAN BE PROVIDED AT CONTRACTOR REQUEST
2. CONTRACTOR RESPONSIBLE FOR ESTABLISHING AND MAINTAINING SITE EROSION CONTROL PRACTICES IN ACCORDANCE WITH NPDES PERMIT #SCR10Z55W. COPY OF PERMIT AND SPECIFICATIONS CAN BE PROVIDED AT CONTRACTOR REQUEST.
3. CONTRACTOR SHALL VISIT THE SITE TO VERIFY FIELD CONDITIONS AT TIME OF BID. CONTRACTOR SHALL BE RESPONSIBLE FOR RE-ESTABLISHING PRE-CONSTRUCTION SITE CONDITIONS TO INCLUDE BACKFILL AND COMPACTION REQUIREMENTS. COPY OF ROADWAY PLANS AND SPECIFICATIONS CAN BE PROVIDED AT CONTRACTOR REQUEST.
4. BIDS WILL INCLUDE UNIT QUANTITIES AND COST FOR THE FOLLOWING ITEMS:
 - 4.1. MOBILIZATION
 - 4.2. EROSION CONTROL
 - 4.3. 8" SDR SEWER
 - 4.4. MANHOLE
 - 4.5. CORE AND CONNECT TO EXISTING MANHOLE
 - 4.6. EARTHWORK

ADDITIONAL COST ITEMS MAY BE ADDED AS DEEMED NECESSARY BY THE BIDDER, BUT MUST INCLUDE AT A MINIMUM THE ABOVE ITEMS.

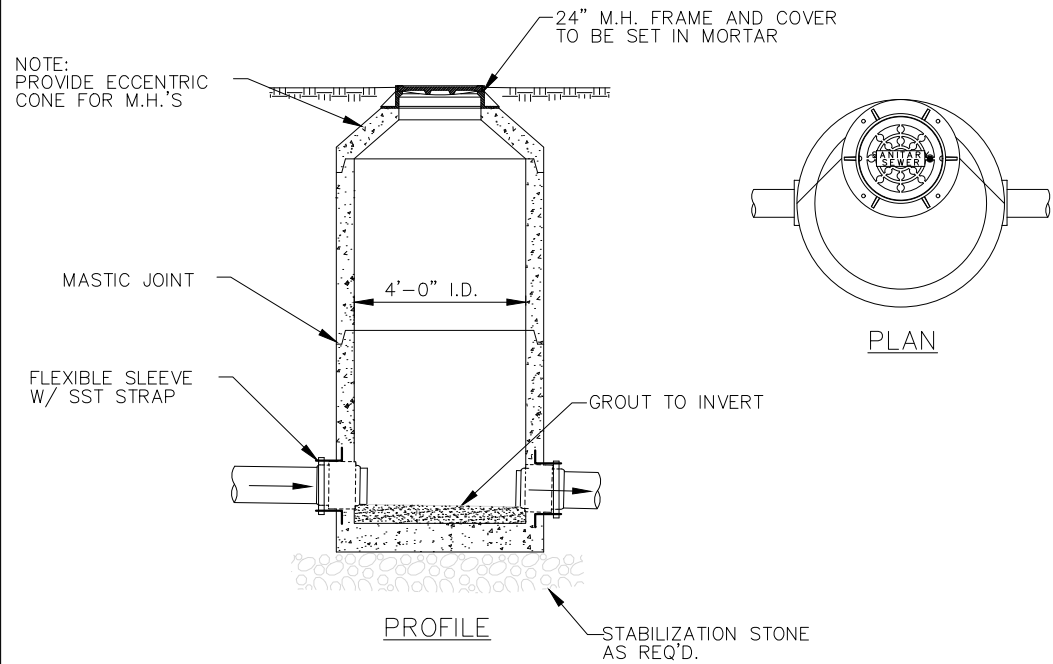


- NOTES:
1. MATERIAL: ASTM-A48 CLASS 35B GRAY IRON.
 2. RING WT: 160 LBS. APP.
 3. COVER WT: 125 LBS. APP.
 4. POLYETHYLENE (H.D.P.E.) ADJUSTING RINGS AS MANUFACTURED BY LADTECH, INC. MAY BE USED FOR LEVELING AND FINAL GRADE OF MANHOLE FRAME AND COVER.
 5. USE U.S. FOUNDRY 668-KL-1 "VENT" FRAME AND COVER OR APPROVED EQUAL.

TYPICAL MANHOLE FRAME & COVER

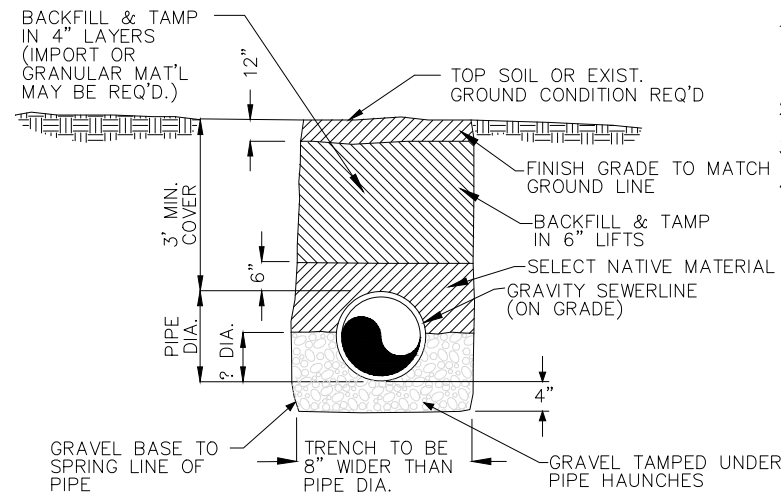
S7

TYPICAL MANHOLE FRAME & COVER	
SEWER ONLY UPDATED: 10/21/2008	S7
GRAND STRAND WATER & SEWER AUTHORITY	



TYPICAL SECTION OF PRECAST SANITARY MANHOLE

SEWER ONLY UPDATED: 7/6/2012
GRAND STRAND WATER & SEWER AUTHORITY



NOTES FOR ALL TRENCH DETAILS

1. TRENCH SHALL BE BACKFILLED AND THOROUGHLY TAMPED WITH SUITABLE MATERIAL TO LEVEL OF STONE, STONE & PAV'T TO BE PLACED BY CONTR. WITH LEAST INTERFERENCE WITH TRAFFIC.
2. ALL CONSTRUCTION TO BE INSPECTED AND APPROVED BY LOCAL COUNTY OR STATE ROAD DEPT.
3. CONTRACTOR IS RESPONSIBLE FOR NOTIFICATION AND OBTAINING INSPECTION.
4. GRAVEL BASE SHALL BE 4" MIN., AND EXTEND UP TO SPRING LINE OF PIPE. GRAVEL SHALL NOT EXCEED ? DIA.

TYPICAL TRENCH SECTION IN NATIVE GROUND CONDITION FOR GRAVITY SEWERLINE

SEWER ONLY UPDATED: 08/28/06	S10
GRAND STRAND WATER & SEWER AUTHORITY	

DEVELOPMENT RESOURCE GROUP, LLC
1101 JOHNSON AVENUE, SUITE 300A
MYRTLE BEACH, SC 29577
843-839-3350 | DRGPLLC.COM



NOTES AND DETAILS

BELLA VITA PHASE 3
SEWER EXTENSION FOR HCS

JOB NO:	20.107
SCALE:	AS NOTED
DRAWN BY:	WAG
CHECKED BY:	MES
DATE:	02/01/2021
EXHIBIT NUMBER:	

C3