

UNIVERSITY DRIVE

UAH PAVEMENT MAINTENANCE

PAGE	AREA	DESCRIPTION
2	A	BEN GRAVES @ N CAMPUS RES HALL
3	B	BEN GRAVES - NURSING DR INTERSECTION
4	C	BEN GRAVES-180' N OF HOLMES (OSB)
5	D	CHARGER UNION SERVICE AREA
6	E	JOHN WRIGHT DR-SE CAMPUS HOUSING
6	F	CHARGER PARK-PARKING LOT NORTH DRIVE
6	G	CHARGER PARK-PARKING LOT CENTER DRIVE
4	H	W20 PERMIT LOT ENTRANCE AREA
7	I	UNIVERSITY PARK
8	J	VON BRAUN RESEARCH HALL
9	K	JOHN WRIGHT DR-PARKING NEAR LAKE
10	L	ROUNDAABOUT@KNOWLEDGE DR & JOHN WRIGHT DR
11	M	WILSON HALL PARKING AREA
11	N	CENTRAL CAMPUS RES PARKING
12	O	OLIN B. KING HALL-NORTH PARKING LOT

HOLMES AVENUE NW

BRADFORD BLVD, NW

SPARKMAN DR NW

TECHNOLOGY DR NW



Scale 1" = 500'

OVERALL MAP -- UAH 2020 PAVEMENT MAINTENANCE -- HUNTSVILLE, AL

BEN GRAVES DRIVE

NORTH CAMPUS RESIDENCE HALL

FRANK FRANZ HALL

BEN GRAVES DRIVE

PARKING

PARKING



Scale 1" = 50'



LOCATION "A" -- UAH 2020 PAVEMENT MAINTENANCE -- HUNTSVILLE, AL

SPRAGINS HALL

SCULPTURE

BIKES

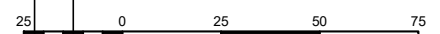
BEN GRAVES DRIVE

NURSING BLDG

NURSING BLDG

PARKING

(B)

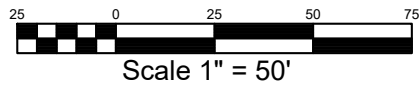


Scale 1" = 50'



LOCATION "B" -- UAH 2020 PAVEMENT MAINTENANCE -- HUNTSVILLE, AL





PARKING

BEN GRAVES DRIVE

C

HOLMES AVENUE NW

H

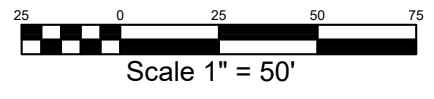
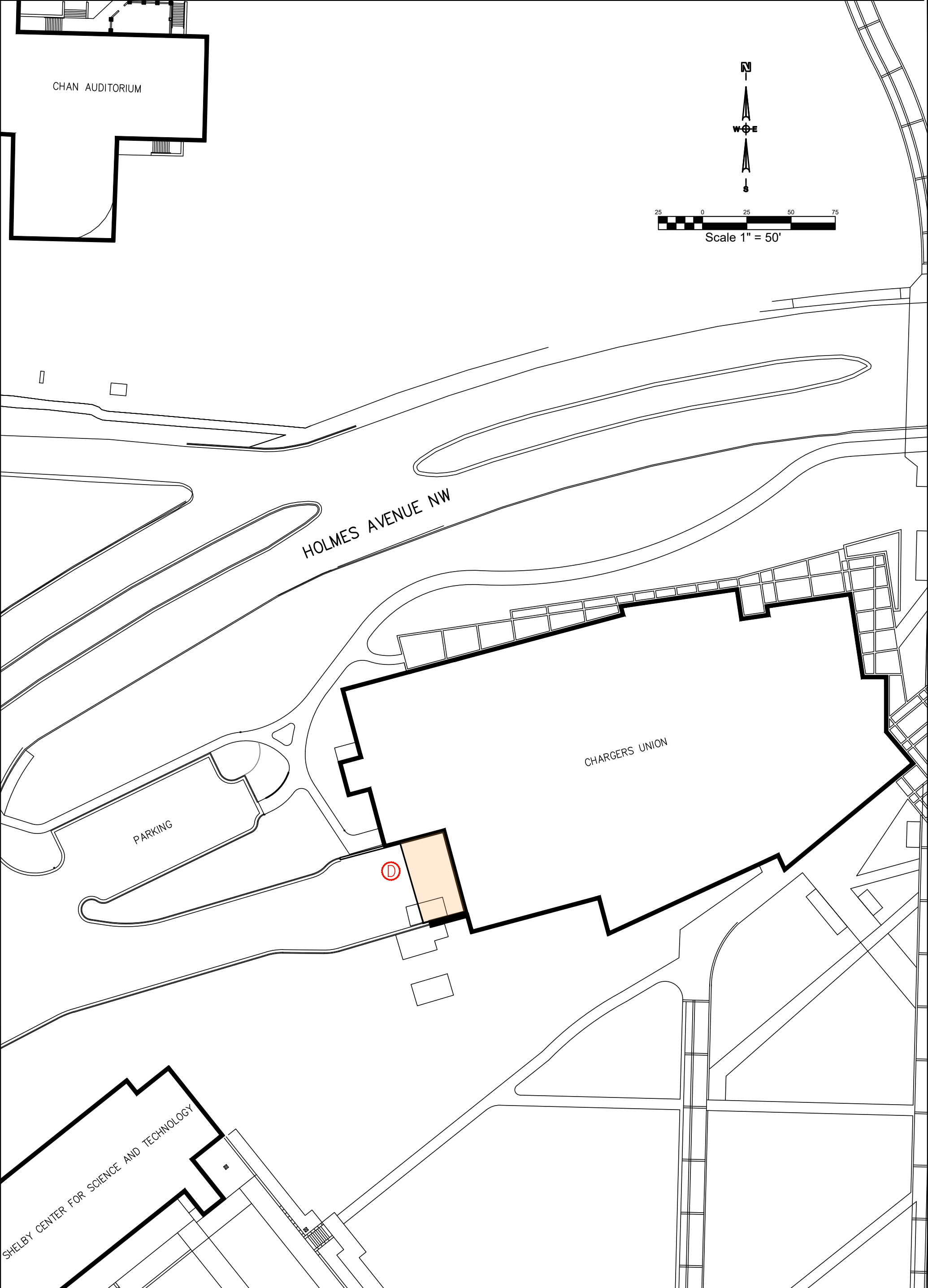
PARKING

JOHN WRIGHT DRIVE

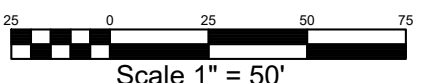
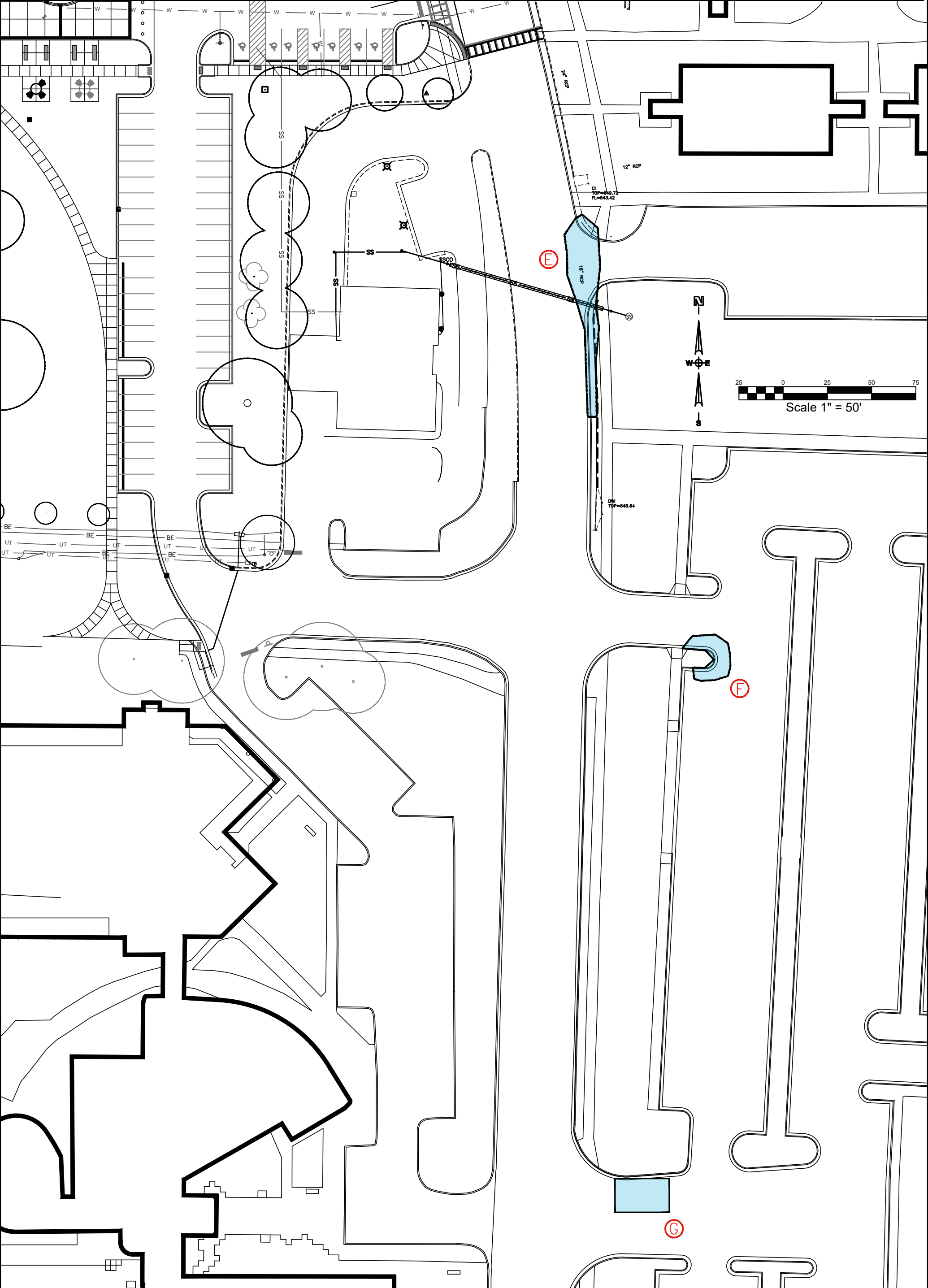
PARKING

INTERMODEL PARKING FACILITY

LOCATIONS "C and H" -- UAH 2020 PAVEMENT MAINTENANCE -- HUNTSVILLE, AL

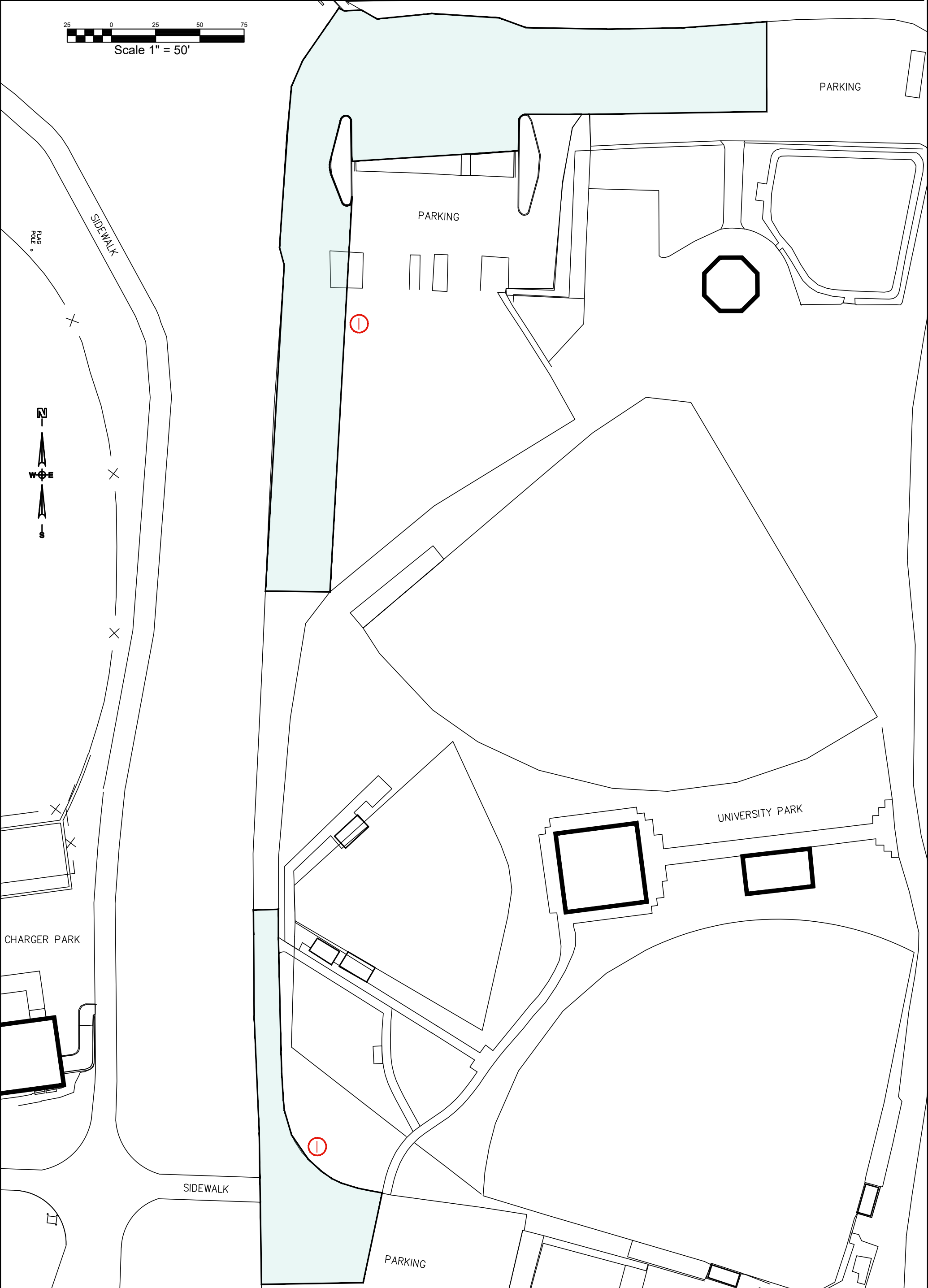
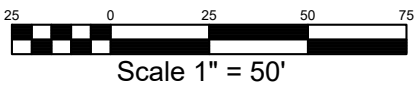


LOCATION "D" -- UAH 2020 PAVEMENT MAINTENANCE -- HUNTSVILLE, AL



Scale 1" = 50'

LOCATIONS "E, F and G" -- UAH 2020 PAVEMENT MAINTENANCE -- HUNTSVILLE, AL



LOCATION "I" -- UAH 2020 PAVEMENT MAINTENANCE -- HUNTSVILLE, AL

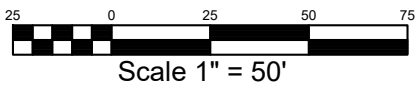
JOHN WRIGHT DR NW

TECHNOLOGY DR

WERNHER VON BRAUN RESEARCH HALL

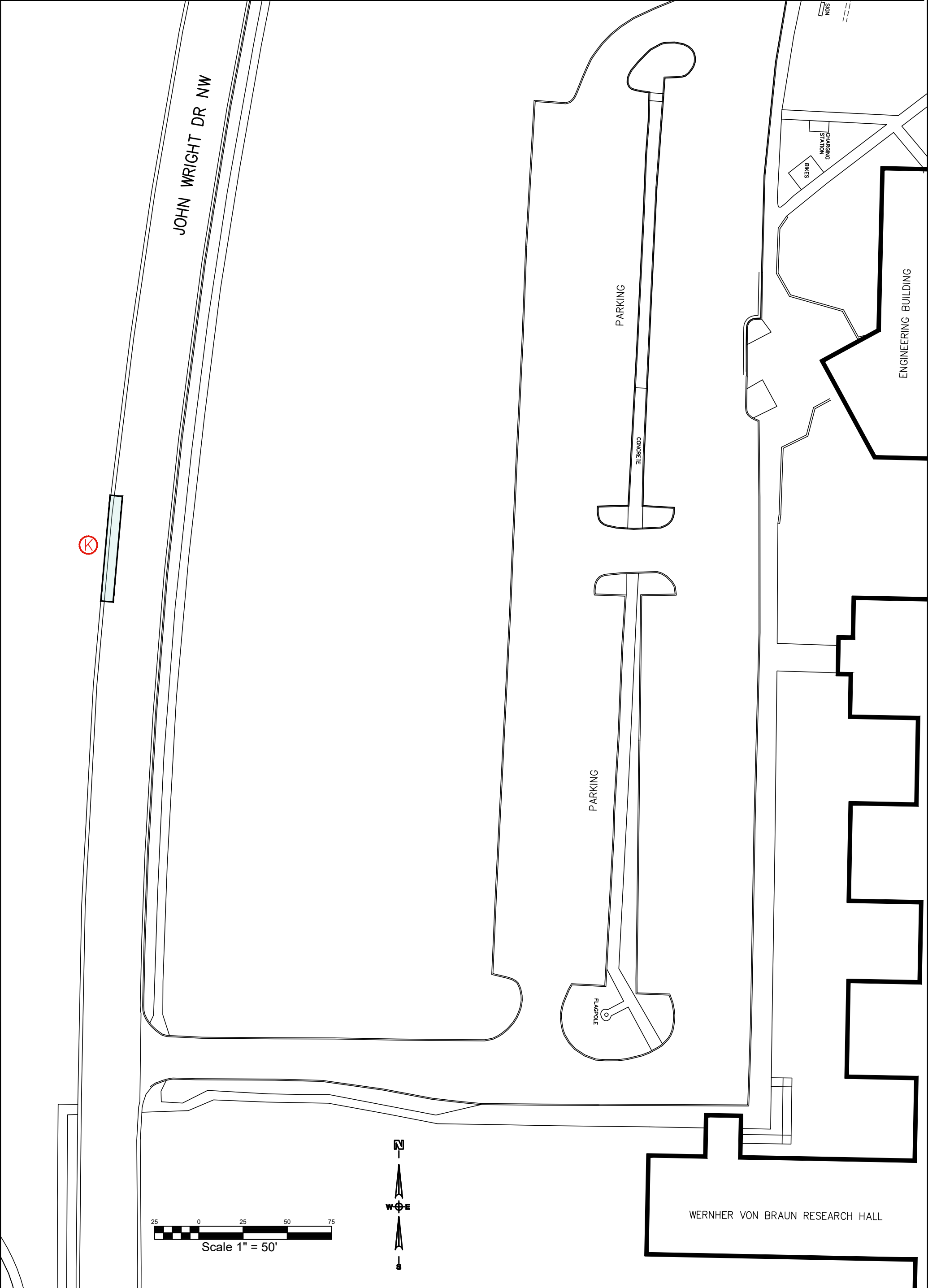
PARKING

JOHN WRIGHT DR NW

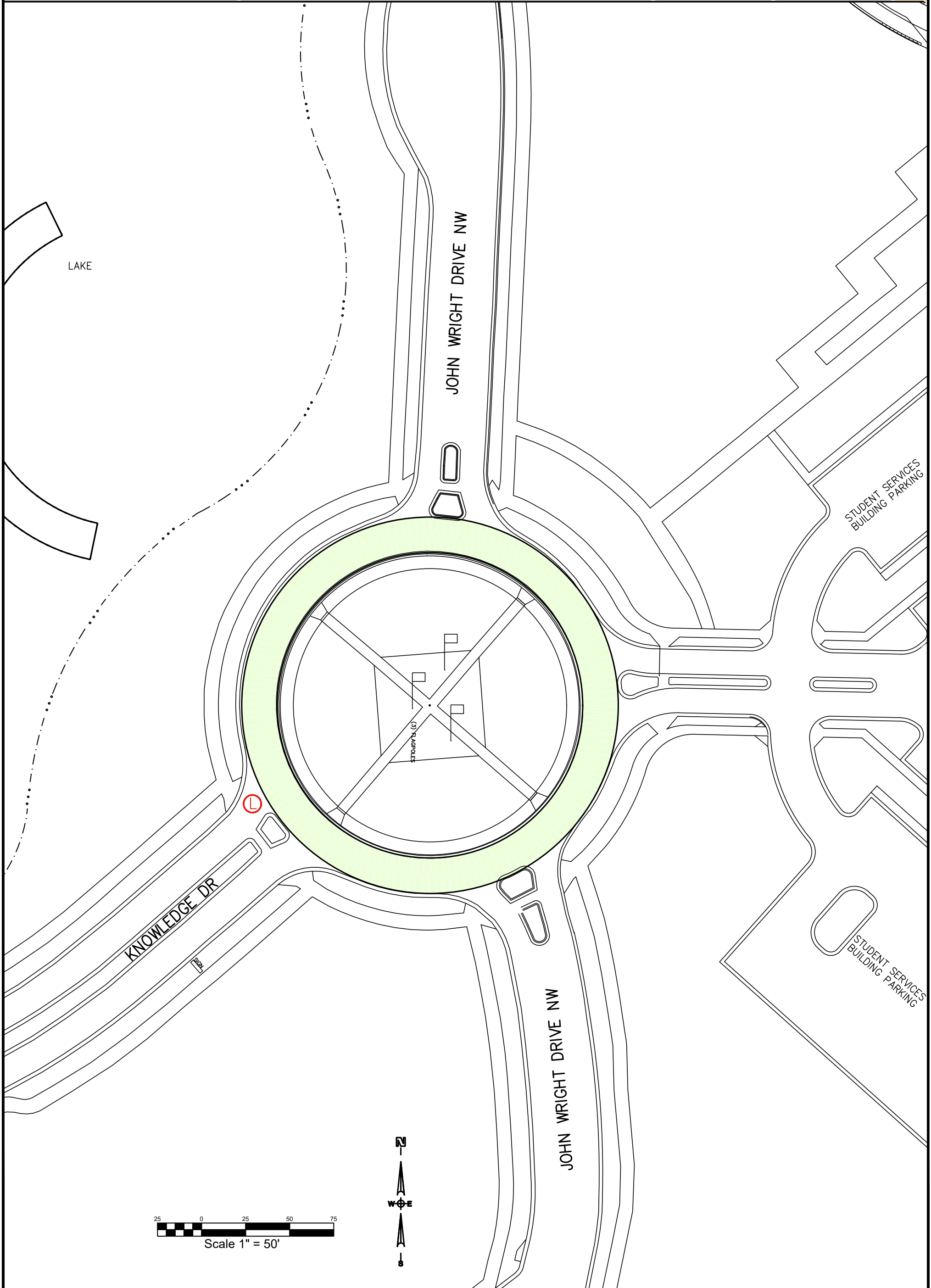


LOCATION "J" -- UAH 2020 PAVEMENT MAINTENANCE -- HUNTSVILLE, AL

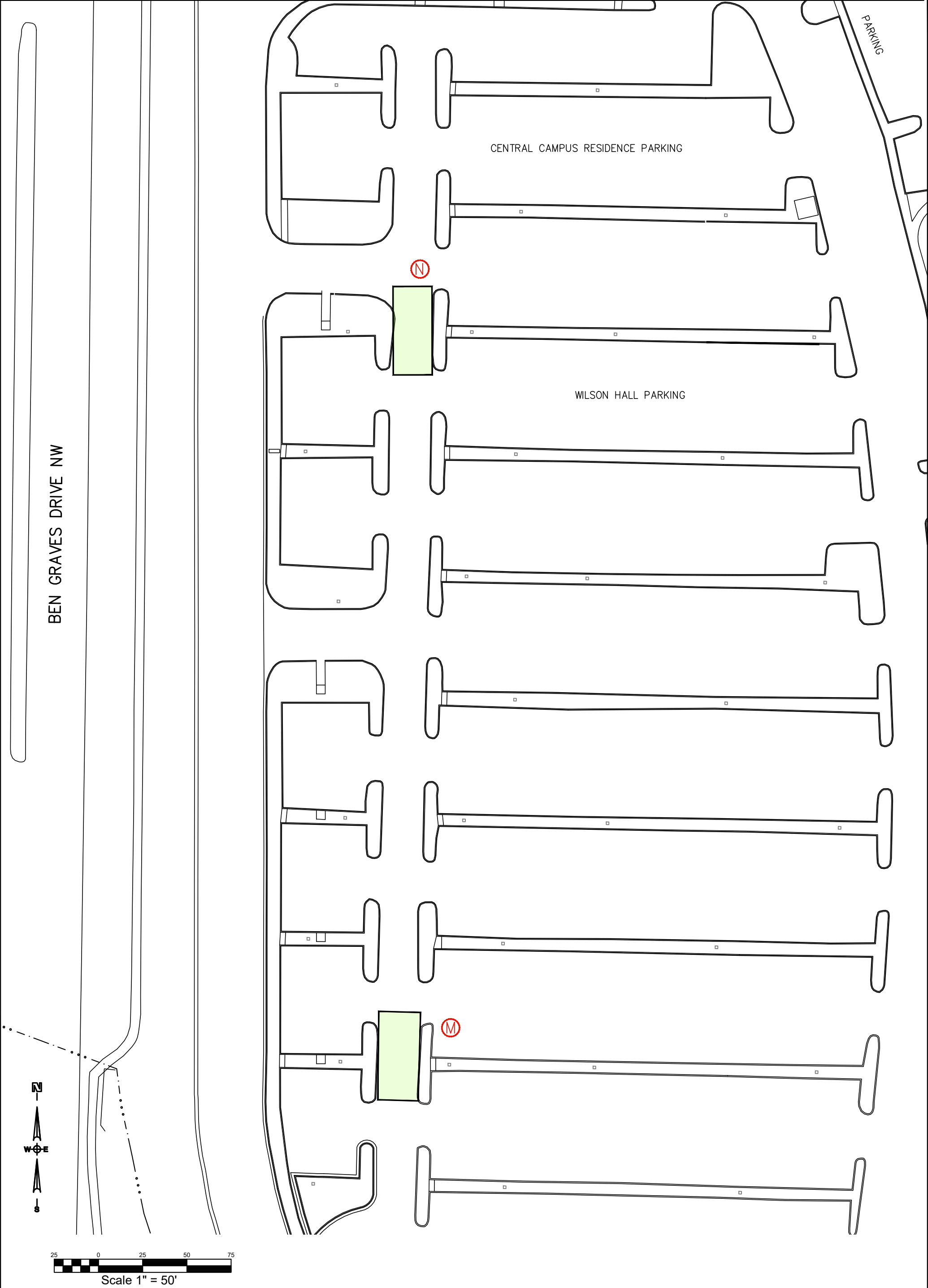




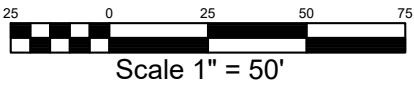
LOCATION "K" -- UAH 2020 PAVEMENT MAINTENANCE -- HUNTSVILLE, AL



LOCATION "L" -- UAH 2020 PAVEMENT MAINTENANCE -- HUNTSVILLE, AL



LOCATIONS "M and N" -- UAH 2020 PAVEMENT MAINTENANCE -- HUNTSVILLE, AL



TECHNOLOGY DRIVE NW

525'± TO SPARKMAN DR NW ->

PARKING



FLAGPOLE

OLIN B. KING TECHNOLOGY HALL

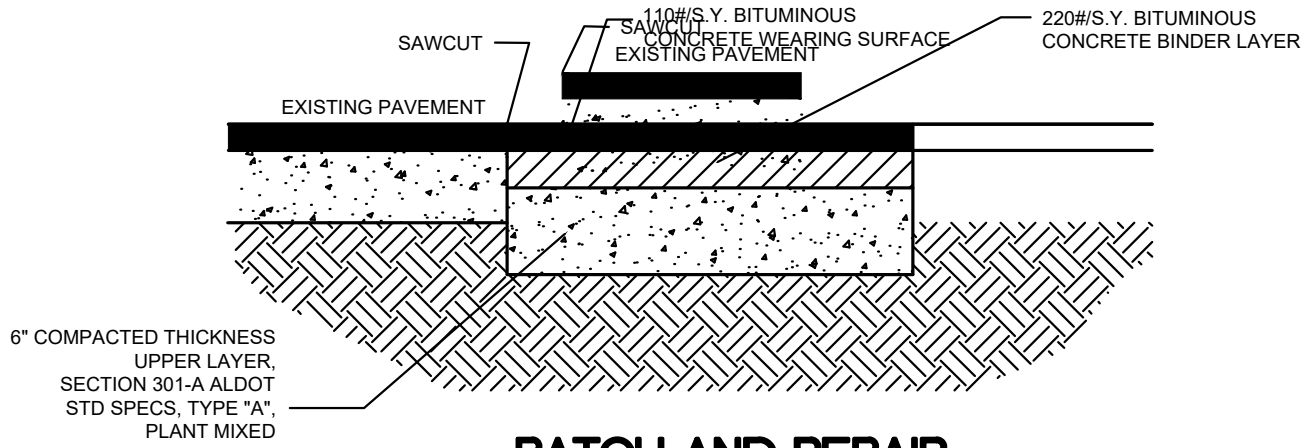
PARKING

PARKING

PARKING

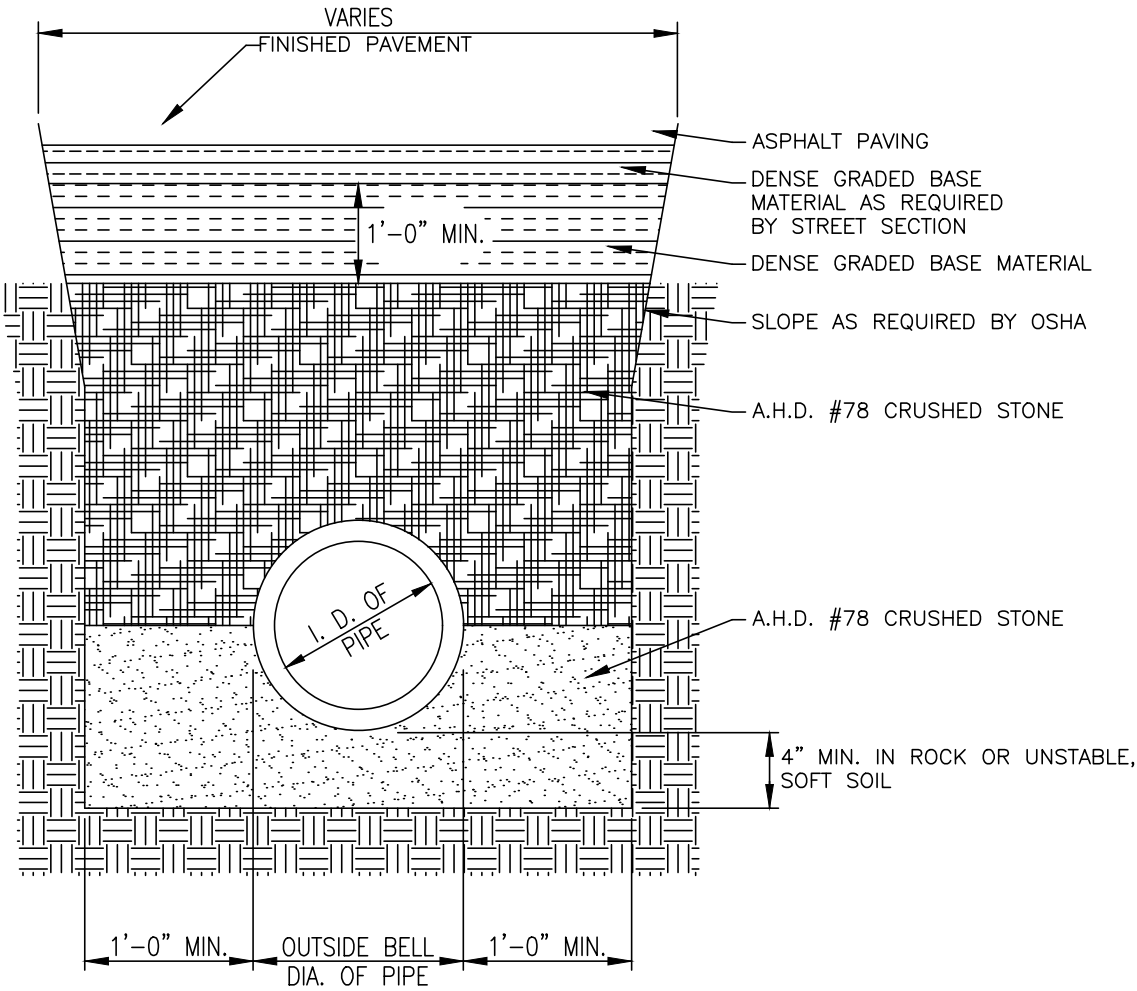
LOCATION "O" -- UAH 2020 PAVEMENT MAINTENANCE -- HUNTSVILLE, AL



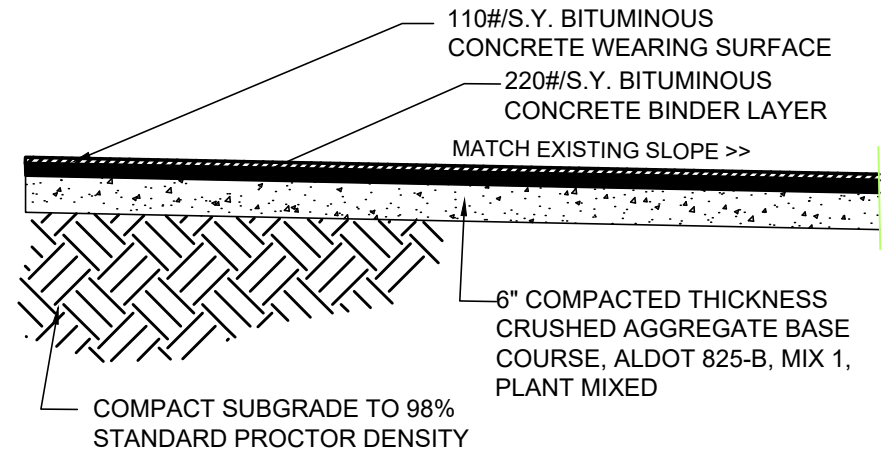


**PATCH AND REPAIR  
TYPICAL SECTION**

NOT TO SCALE

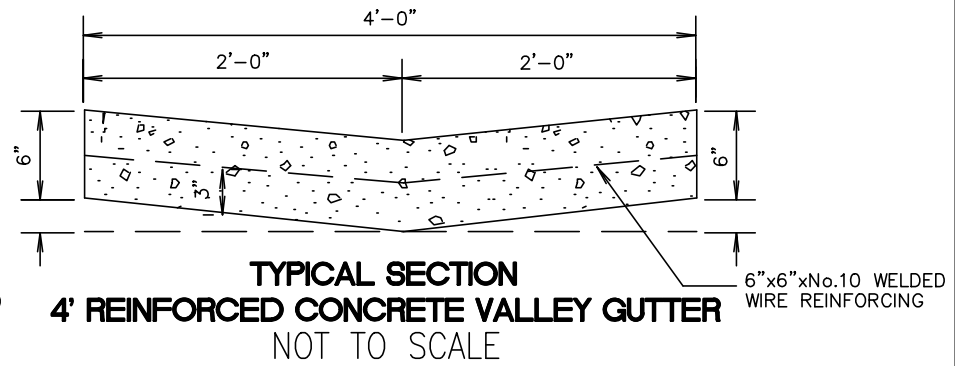


**STORM SEWERS IN PROPOSED TRAFFIC  
AREAS OR WITHIN STREET RIGHTS-OF-WAY**



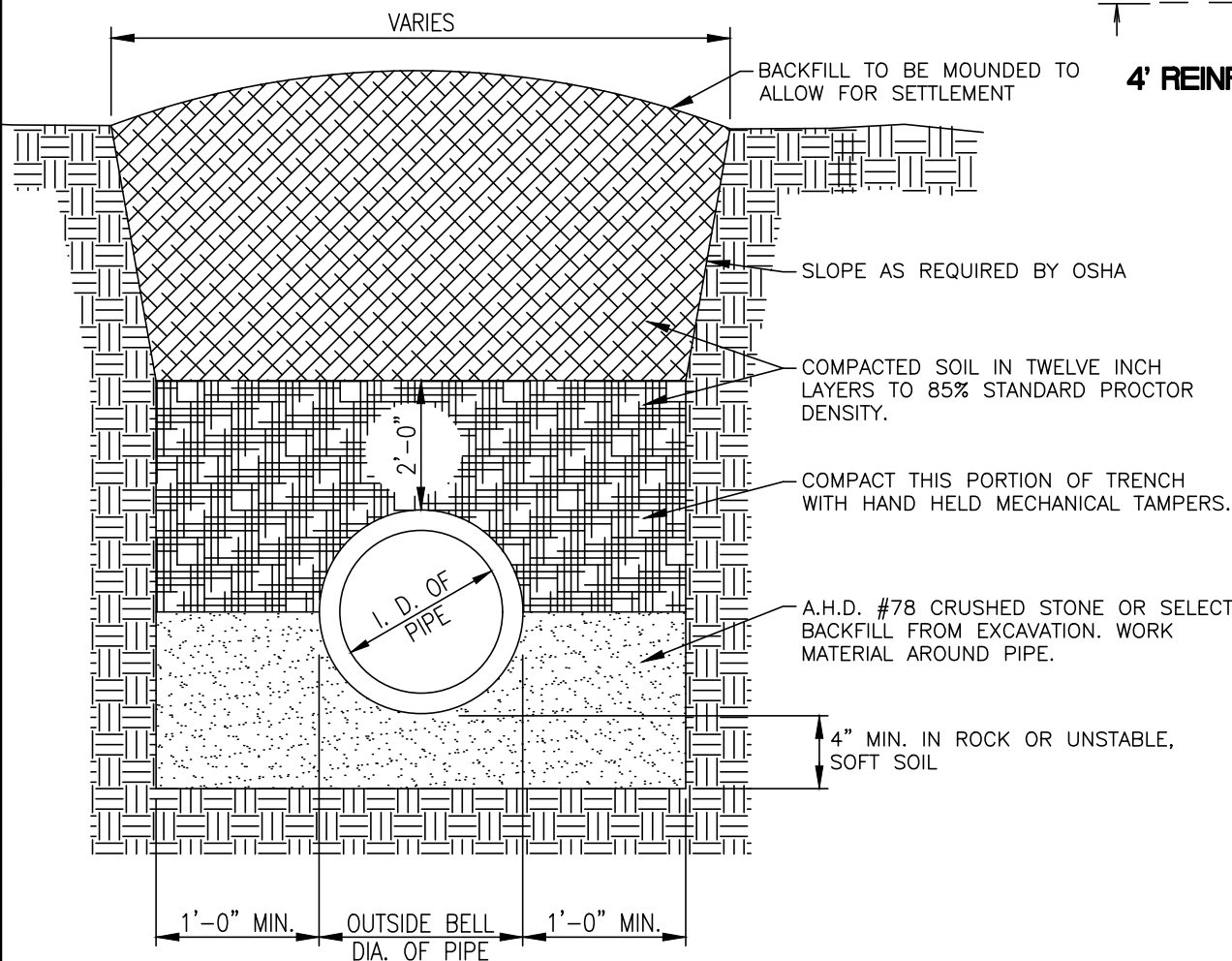
**NEW CONSTRUCTION ASPHALT  
TYPICAL SECTION**

NOT TO SCALE



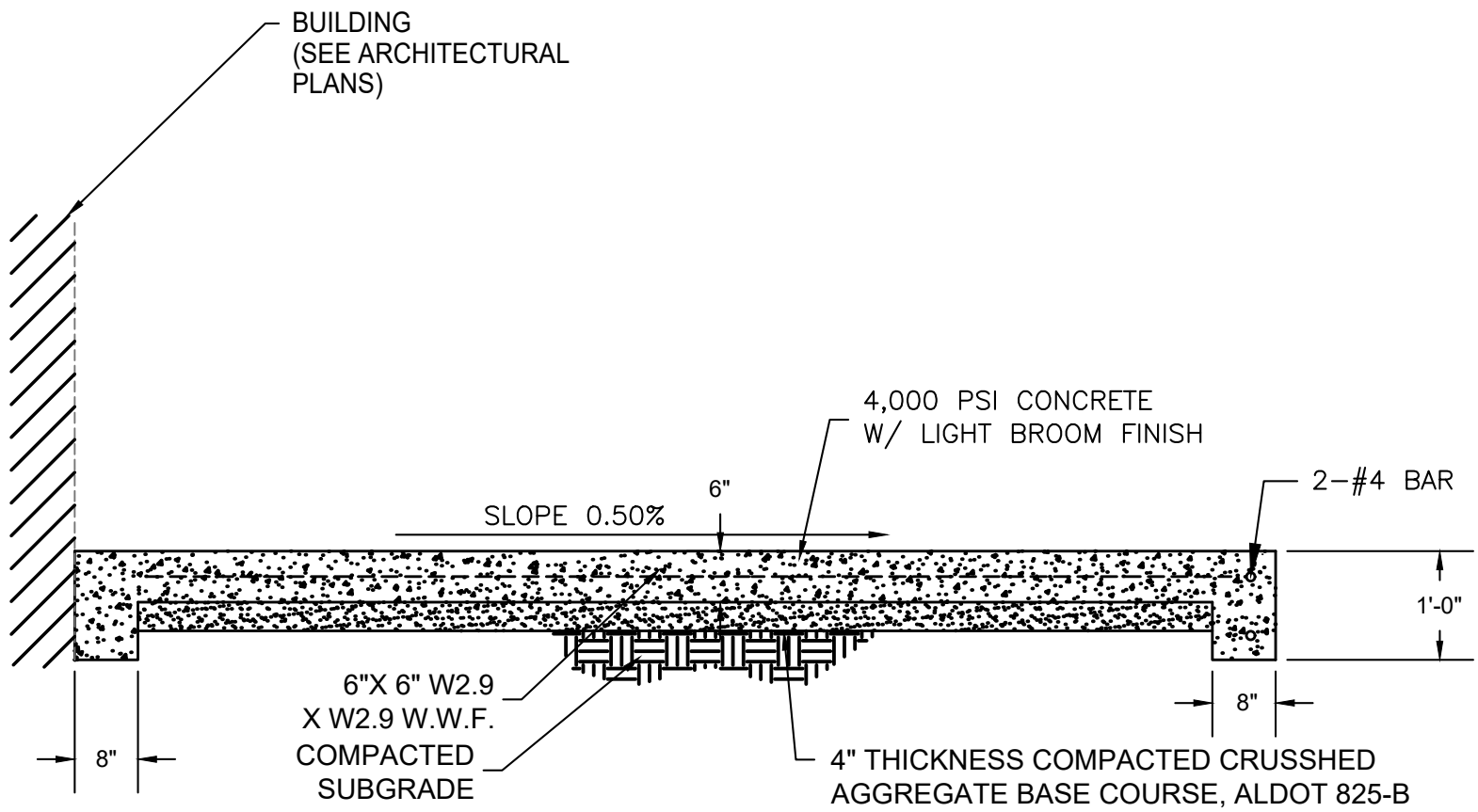
**TYPICAL SECTION  
4' REINFORCED CONCRETE VALLEY GUTTER**

NOT TO SCALE



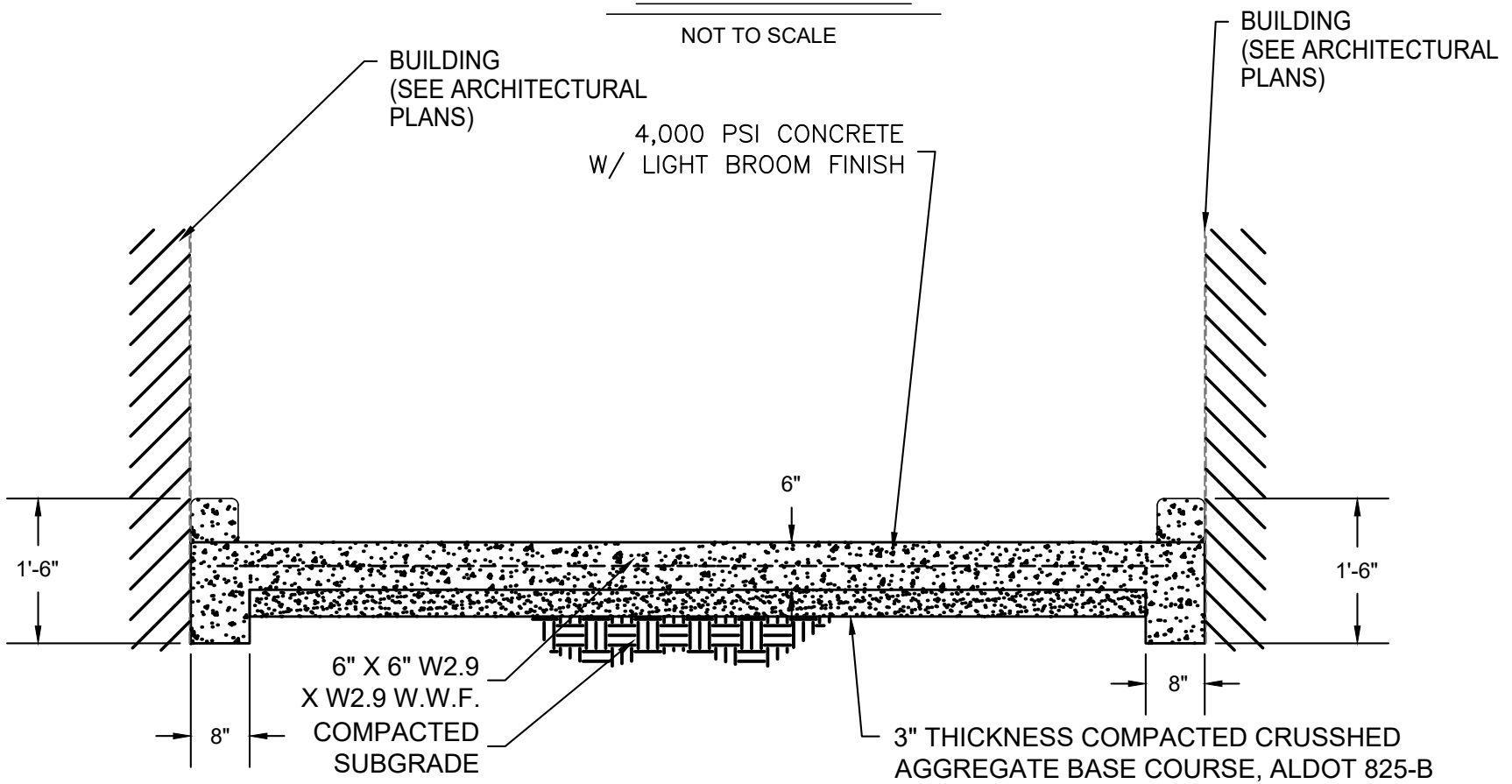
**STORM SEWER BEDDING, NON-TRAFFIC**

NOT TO SCALE



SECTION A-A

NOT TO SCALE

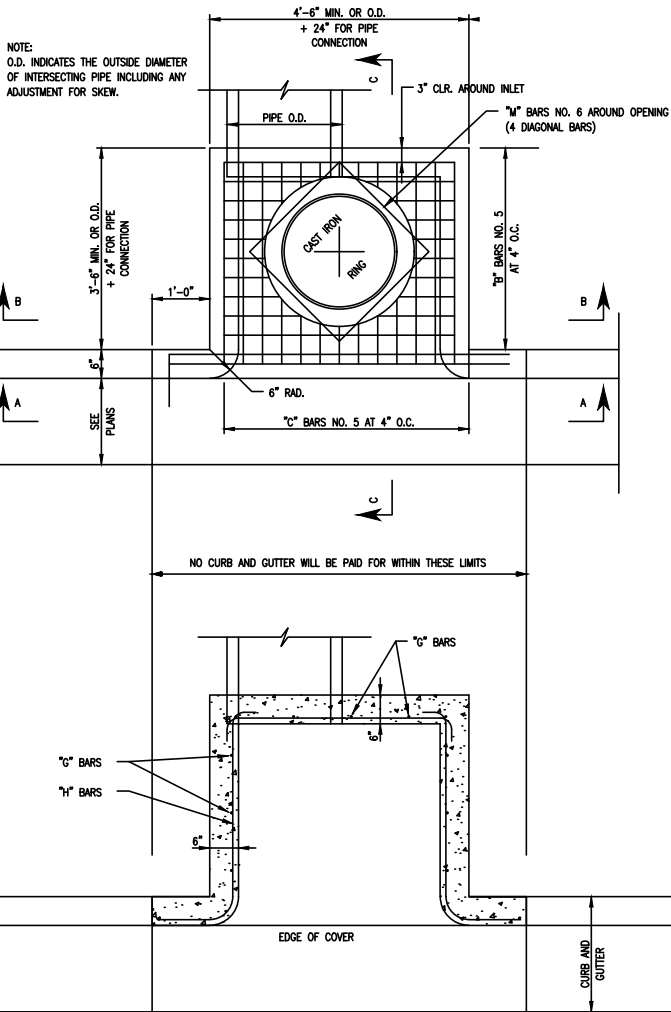


SECTION B-B

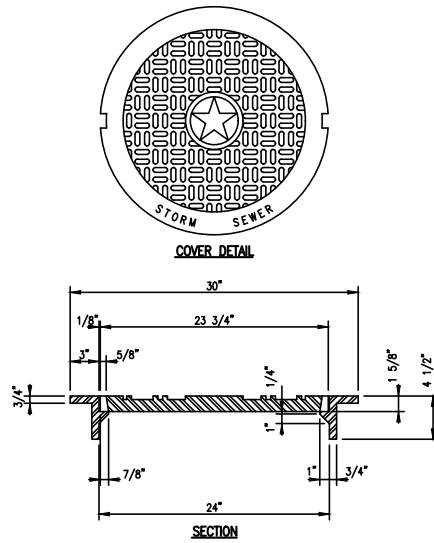
NOT TO SCALE

## CONCRETE PAVEMENT

CONSTRUCTION DETAILS-- UAH 2020 PAVEMENT MAINTENANCE -- HUNTSVILLE, AL

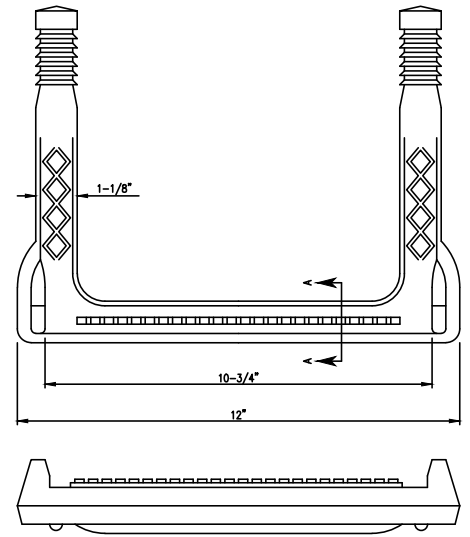


**PLAN VIEW**  
SCALE: NOT TO SCALE



NOTE: COVER AND FRAME SHALL CONFORM TO THE REQUIREMENTS OF CLASS 30 FOR GRAY IRON CASTING, ASTM (A 48). FRAME AND COVER SHALL BE CERTIFIED BY MFG. TO BE TRAFFIC BEARING WHEN APPLICABLE.

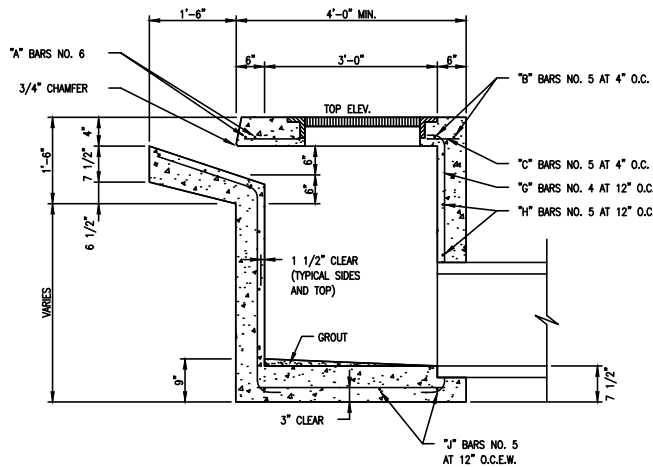
**RING AND COVER DETAIL**  
SCALE: NOT TO SCALE



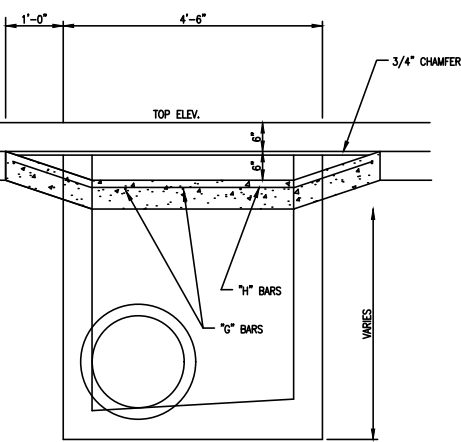
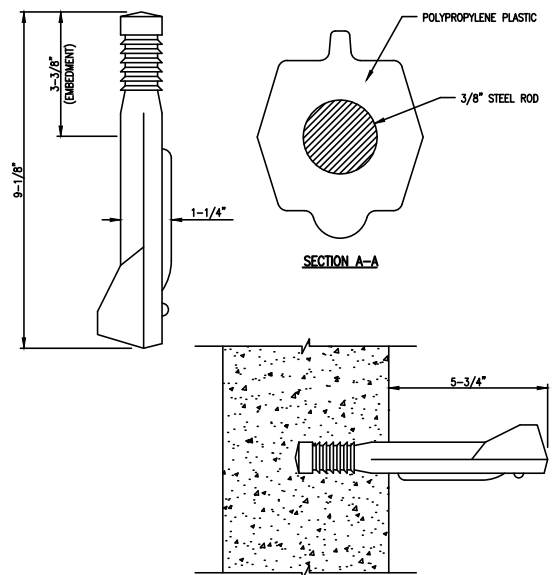
(DIMENSIONS SHOWN ARE MINIMUM REQUIREMENTS)

NOTE: MANHOLE STEPS SHALL BE MANUFACTURED FROM ALUMINUM OR POLYPROPYLENE PLASTIC REINFORCED WITH A 3/8" OR LARGER STEEL ROD. STEPS SHALL BE EMBEDDED IN THE BASE, RISER AND TOP SECTIONS A MINIMUM OF THREE INCHES AT THE TIME OF CONSTRUCTION. MANHOLE STEPS SHALL BE A MINIMUM OF 10-3/4" WIDE AND EXTEND FROM THE MANHOLE A MINIMUM OF 5-3/4".

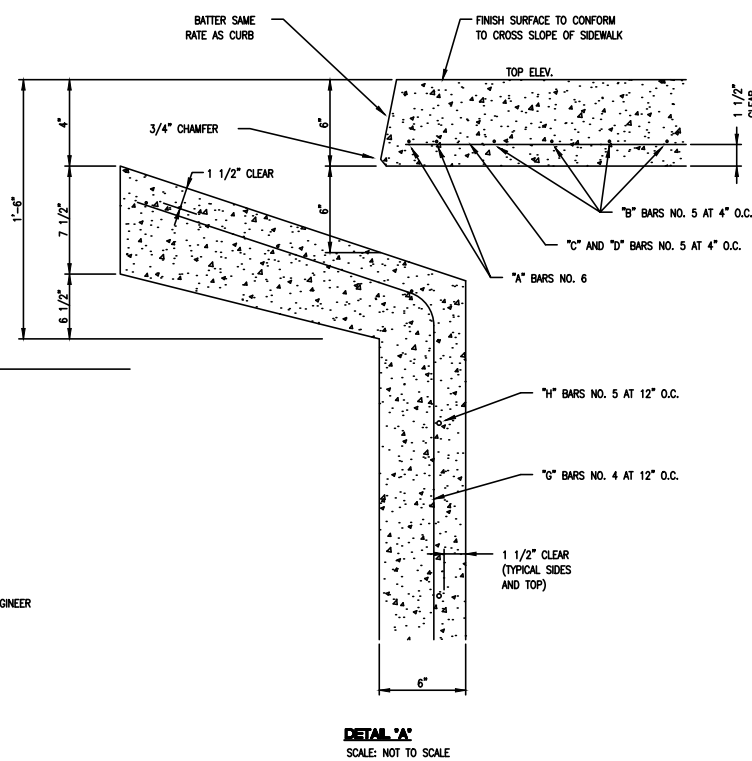
**STORM SEWER MANHOLE STEP DETAIL**  
SCALE: NOT TO SCALE



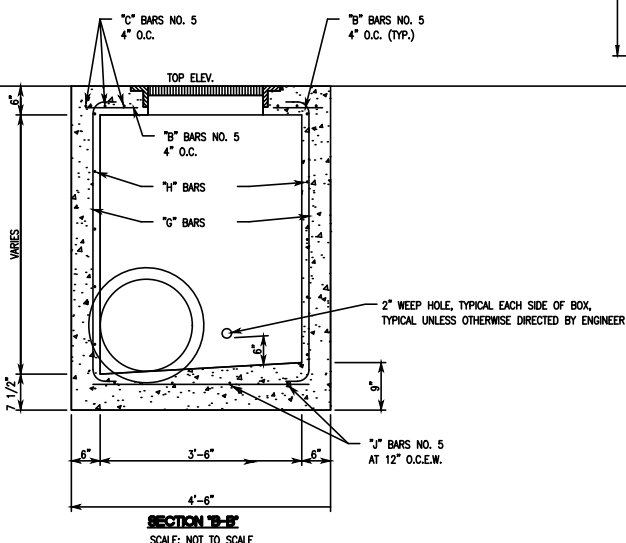
**SECTION 'C-C'**  
SCALE: NOT TO SCALE



**SECTION 'A-A'**  
SCALE: NOT TO SCALE



**DETAIL 'A'**  
SCALE: NOT TO SCALE



**SECTION 'B-B'**  
SCALE: NOT TO SCALE

**GENERAL NOTES**

- CONCRETE: ALL CONCRETE SHALL BE 3,000 PSI, 28 DAY COMPRESSIVE STRENGTH.
- REINFORCING: ALL REINFORCEMENT SHALL BE DEFORMED BAR, GRADE 60.
- INLET WINGS: WHERE THE DIRECTION OF FLOW IS FROM BOTH SIDES OF THE INLET, SIDE WING OPENINGS (AS SHOWN ON ONE SIDE ONLY) SHALL BE BUILT ON BOTH SIDES OF INLET. FOR EACH INLET SO BUILT PAYMENT WILL BE MADE UNDER ITEM "INLETS TYPE S, (DOUBLE WING)". WHERE ONE WING ONLY IS BUILT PAYMENT WILL BE MADE UNDER ITEM "INLETS TYPE S, (SINGLE WING)".
- LARGE PIPE: TO ACCOMMODATE LARGE DIAMETER PIPE, OR TO FIT OTHER CONDITIONS, IT MAY BE NECESSARY TO INCREASE ONE OR BOTH PLAN DIMENSIONS OF THE INLET BOX AND COVER SLAB. NO ADDITIONAL COMPENSATION WILL BE ALLOWED FOR THE CORRESPONDING INCREASE IN CONSTRUCTION MATERIALS WHERE CHANGES IN DIMENSIONS ARE REQUIRED.
- PIPE CONNECTIONS: PIPE MAY CONNECT WITH INLETS FROM ANY DIRECTION, AND AS MANY CONNECTIONS SHALL BE MADE AS ARE NECESSARY.
- WEEP HOLES: 2" MINIMUM DIAMETER WEEP HOLES SHALL BE CONSTRUCTED IN INLETS AS DIRECTED BY THE ENGINEER TO FACILITATE SUB GRADE DRAINAGE.
- RING AND COVER: SHALL CONFORM TO THE REQUIREMENTS OF CLASS 30 FOR GRAY IRON CASTING A.S.T.M. DESIGNATION A48.
- MANHOLE STEPS: MANHOLE STEPS ARE REQUIRED WHEN DIMENSION FROM BOTTOM SLAB FLOW LINE TO TOP SLAB IS GREATER THAN 4'-0". STEPS SHALL BE INSTALLED AT 1'-4" O.C. VERTICALLY.