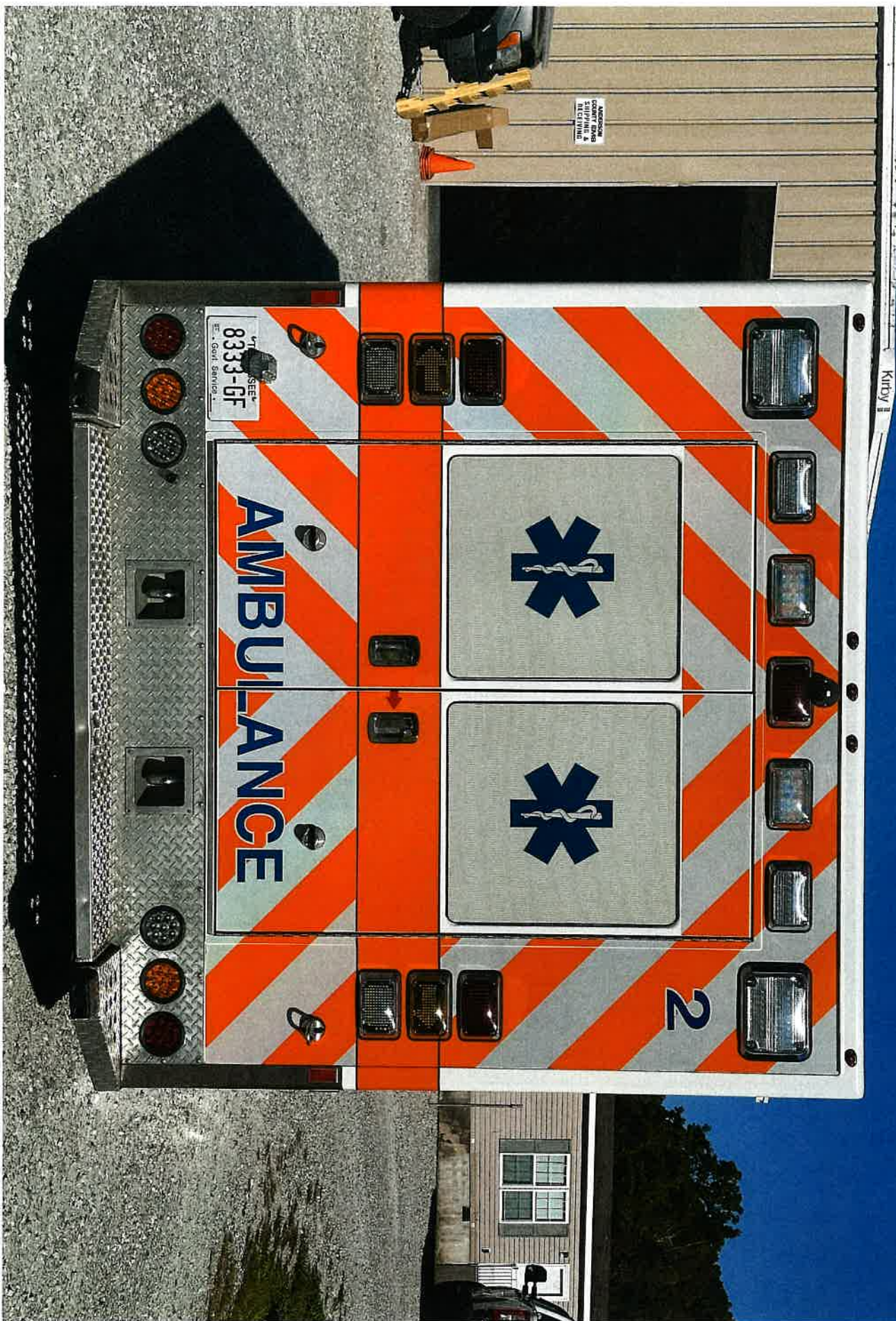


M2



M2



M2



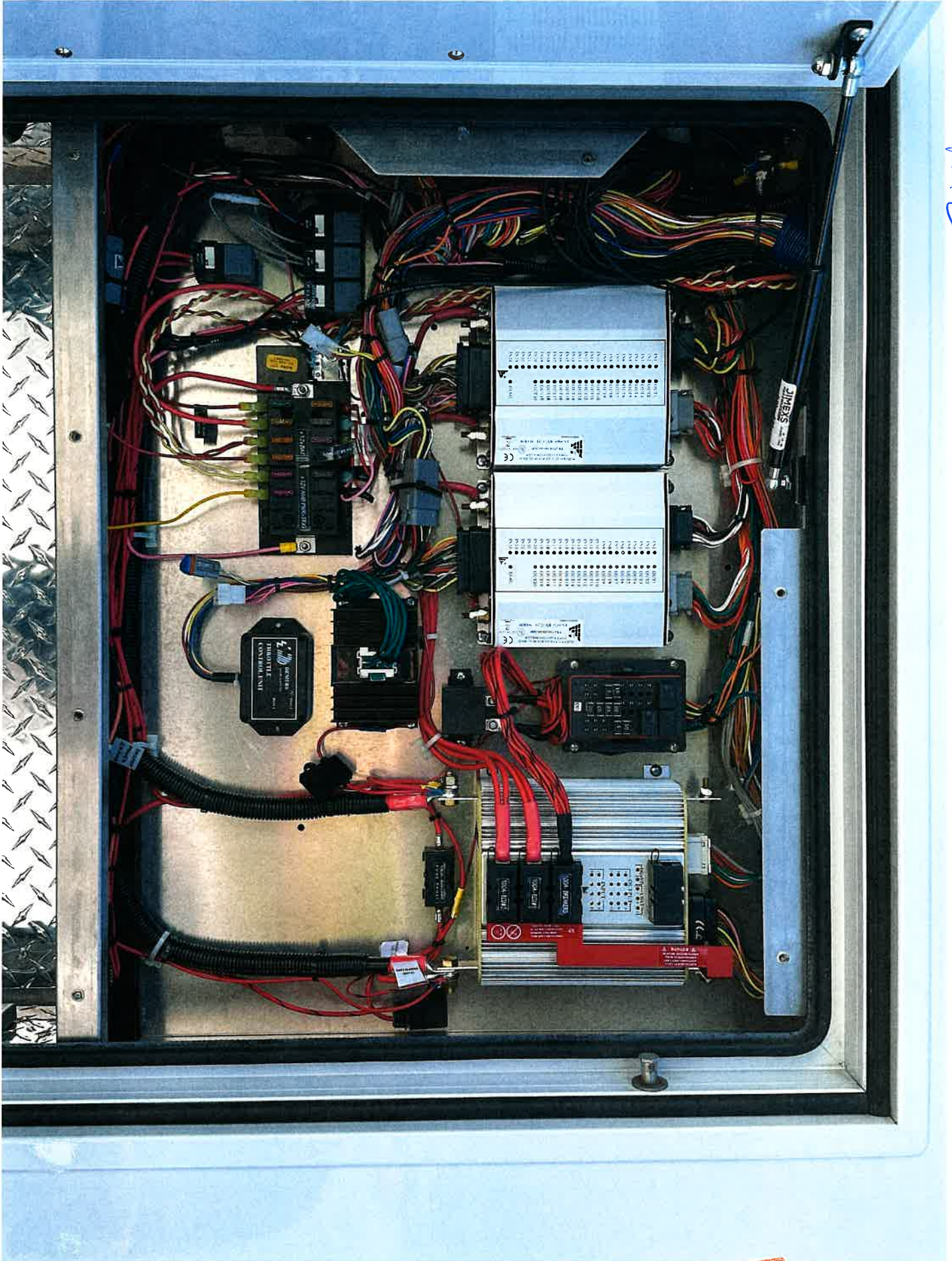
MA2

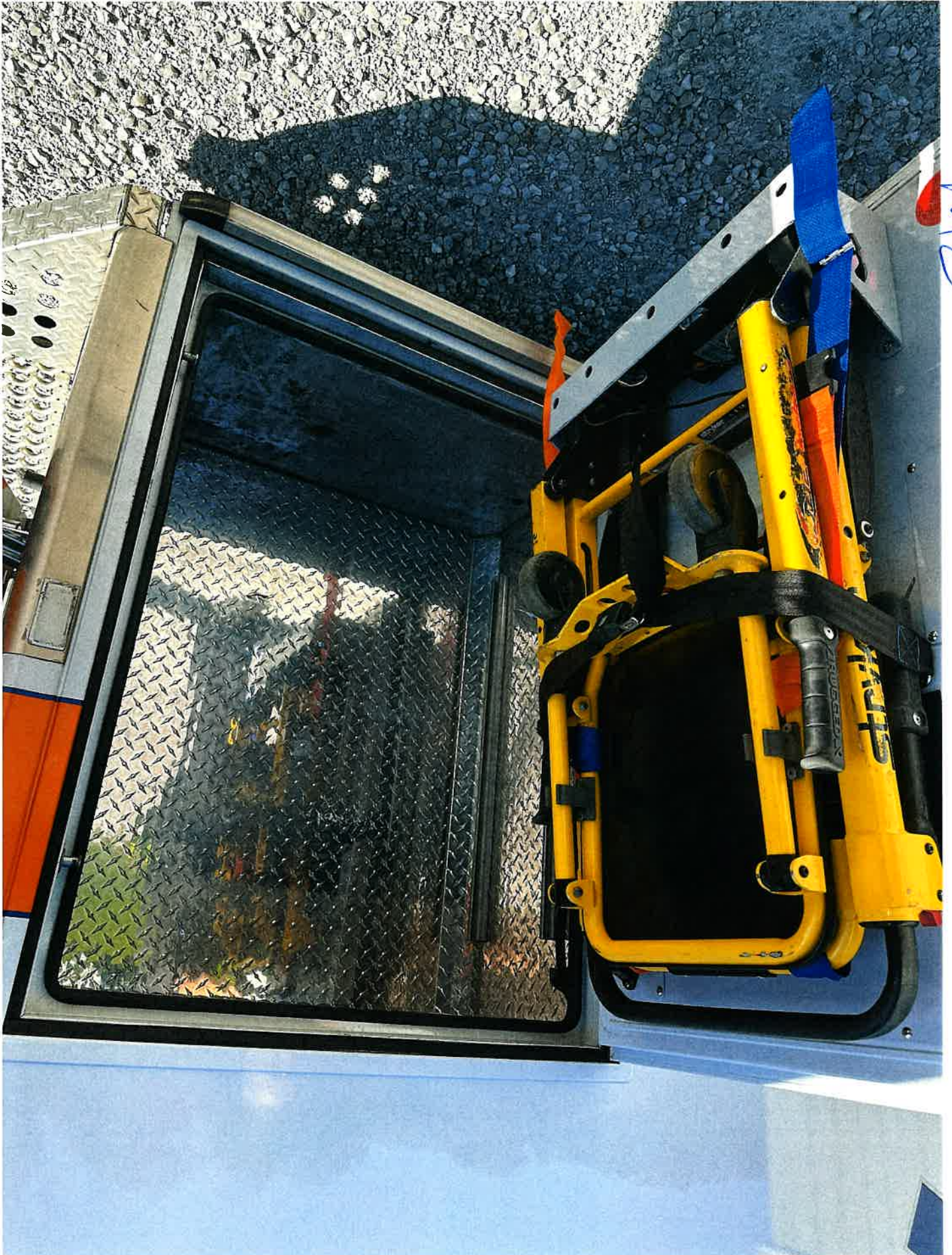




M2

M2

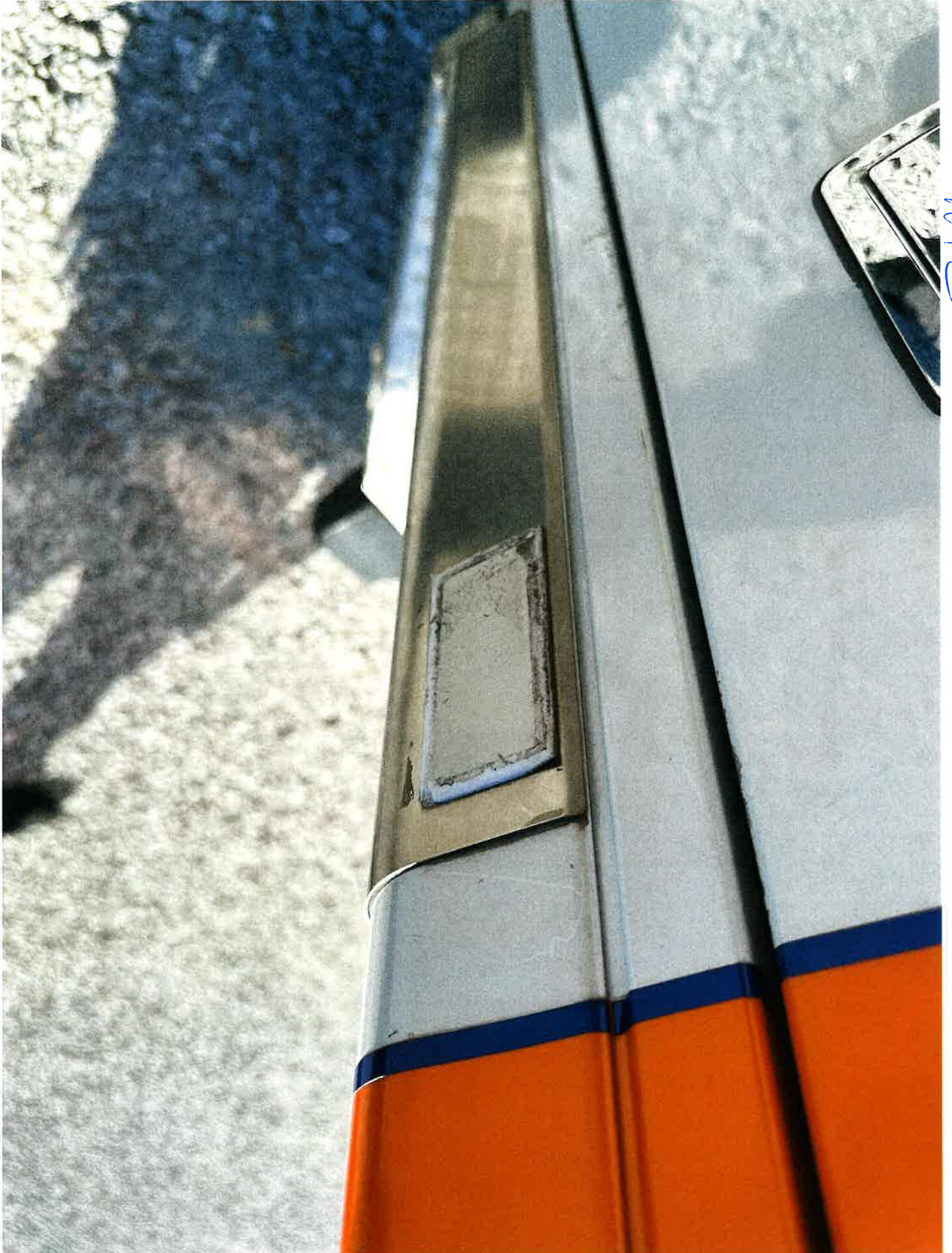




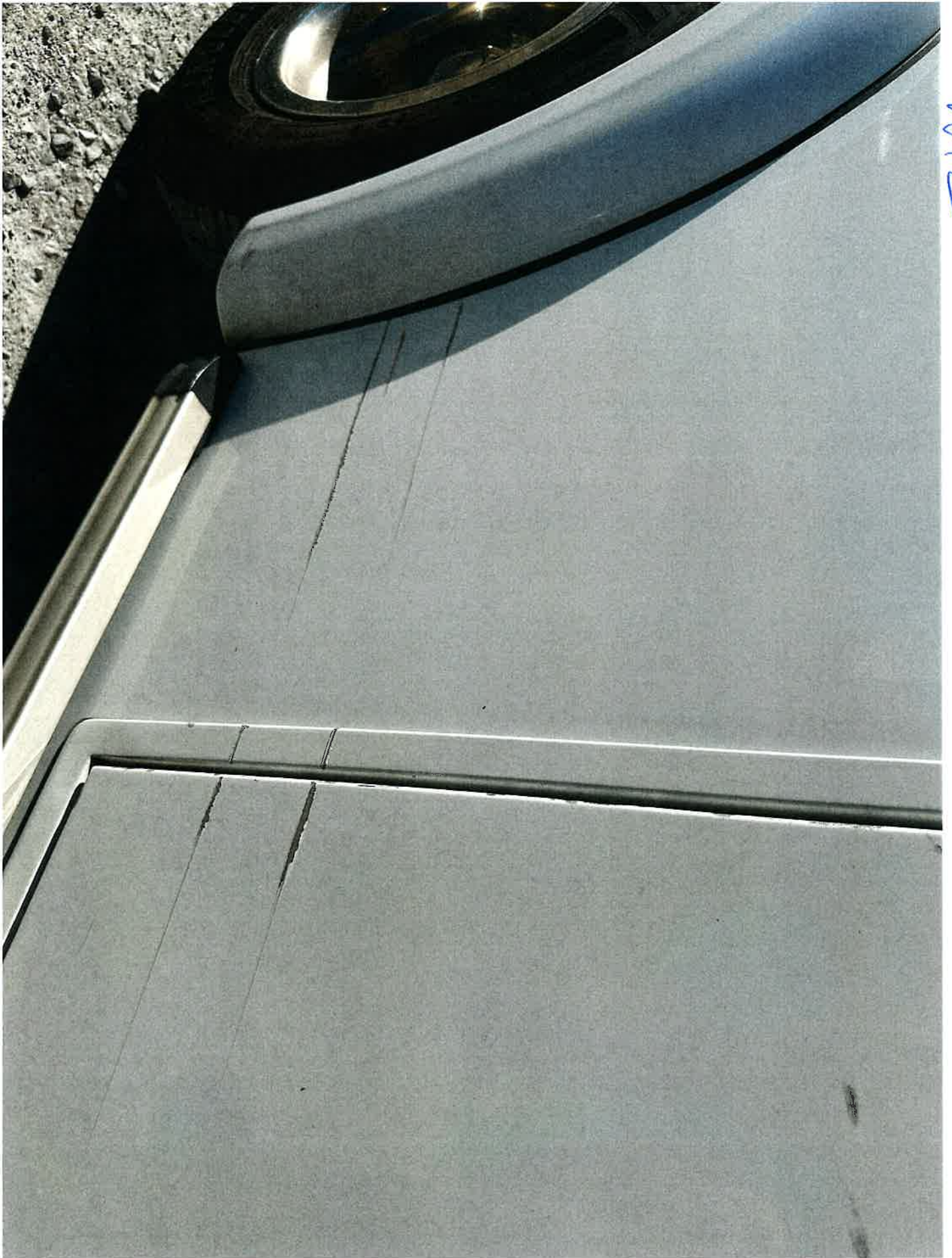
M2



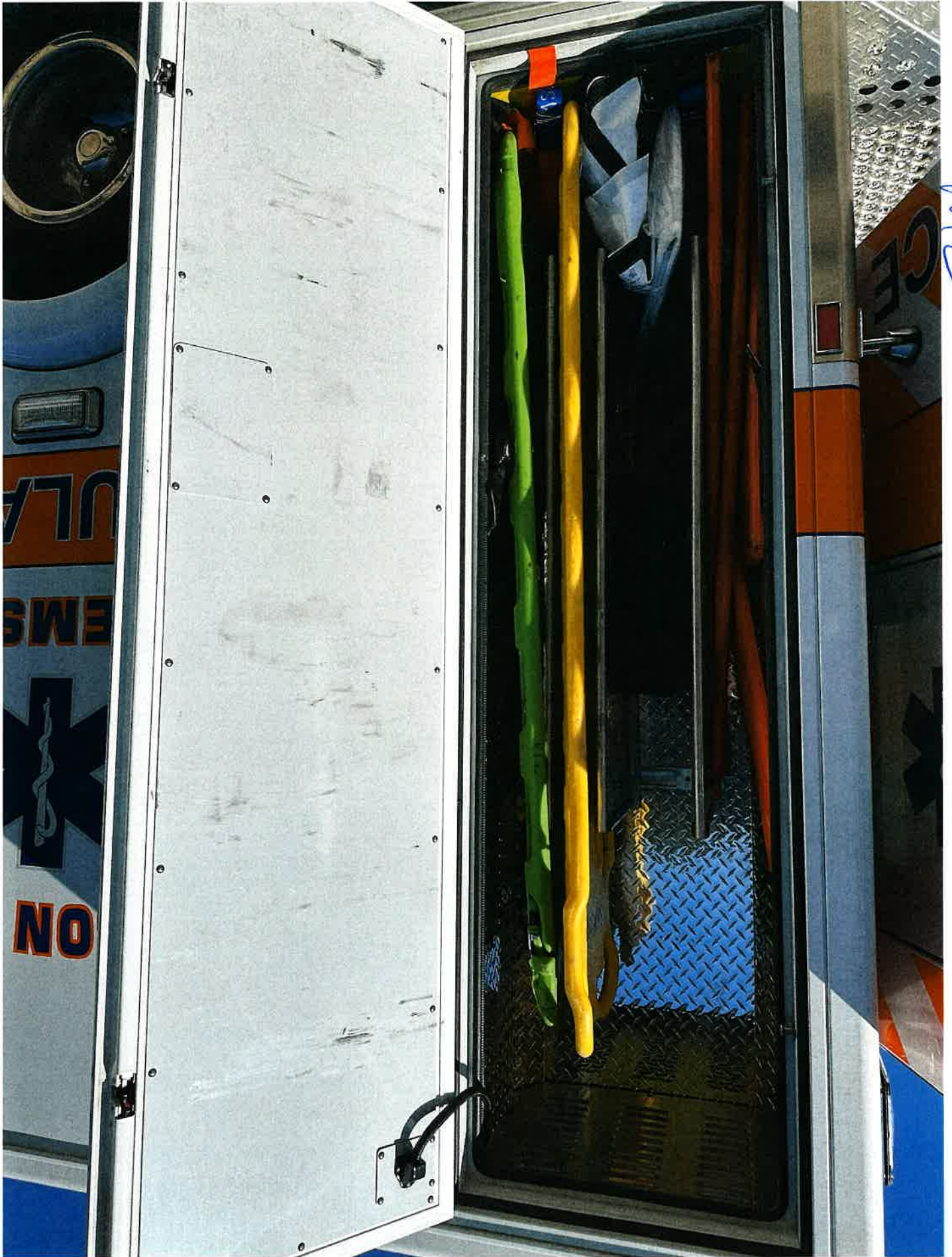
M2



M2



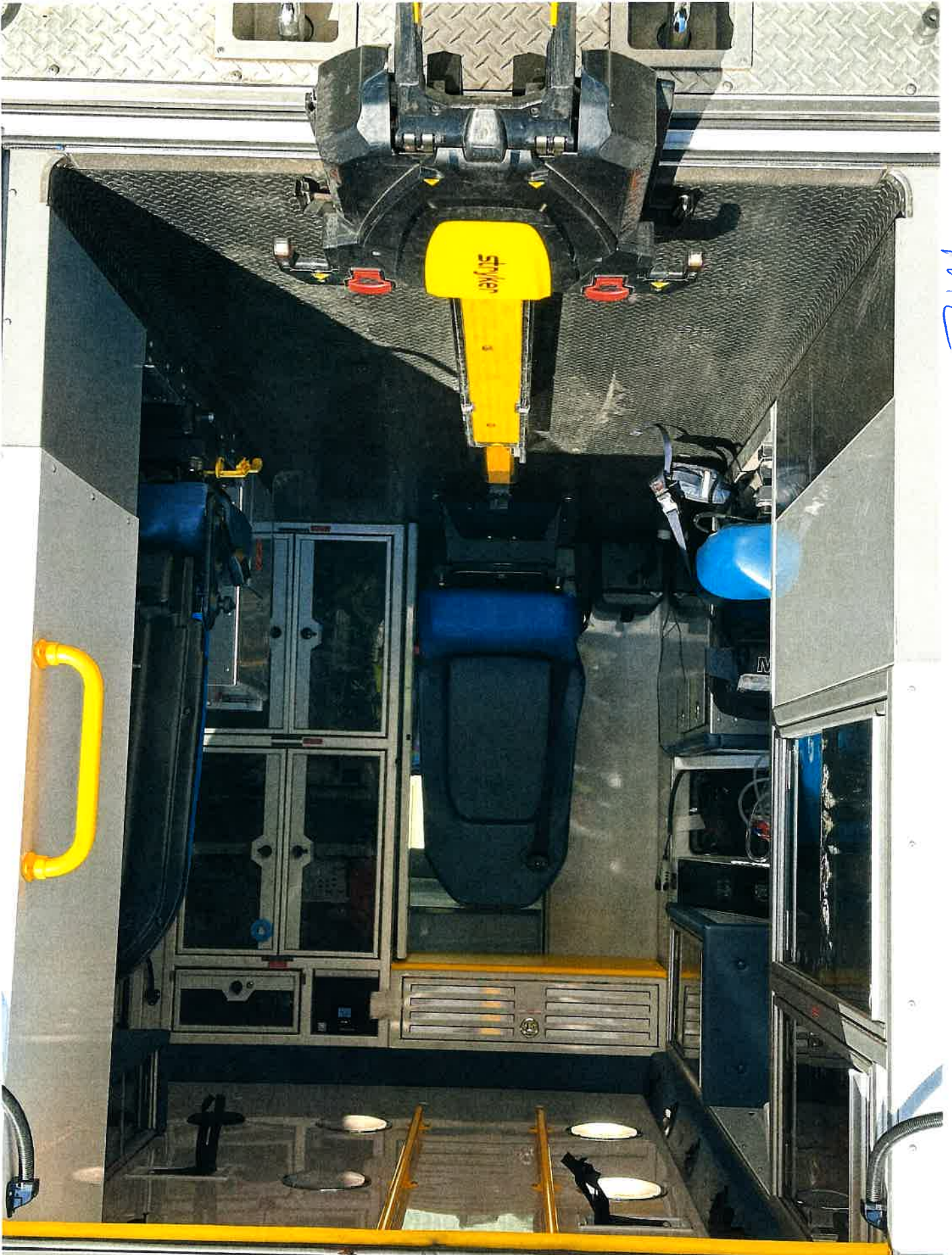
M2



M2



M2

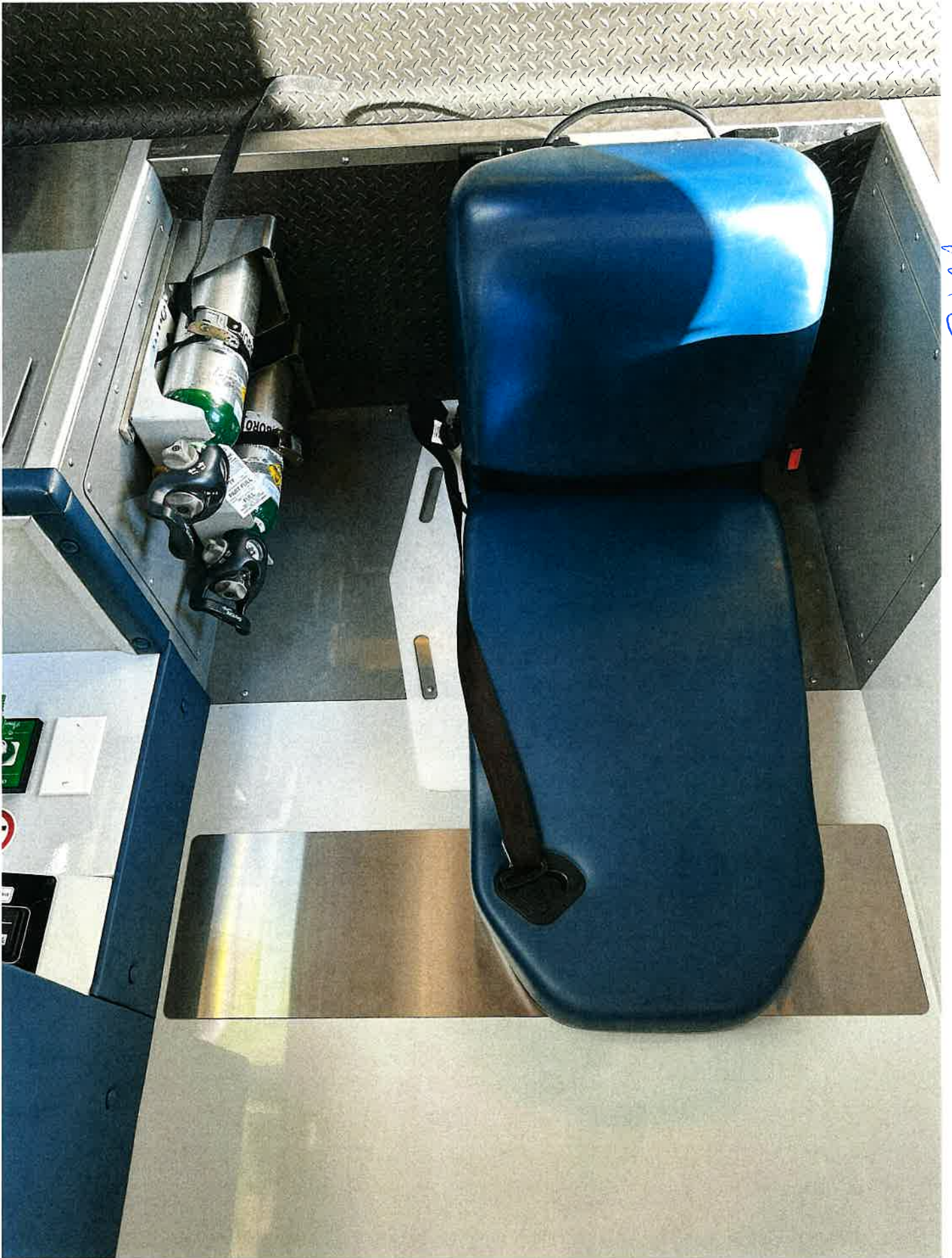


M2





M2



M2

M2





WARNING: NEVER OPERATING THE TISSUE OXYGEN SYSTEM AT A PRESSURE LOWER THAN THAT OF ELECTRICAL SYSTEMS

Control panel buttons including power, alarm, and status indicators.

Control panel buttons including a large square button and a smaller one.

Control panel buttons including a grid of buttons with colored indicators.

VOLUME
MAX
MIN

Digital display showing 'XpertPro' and various settings.

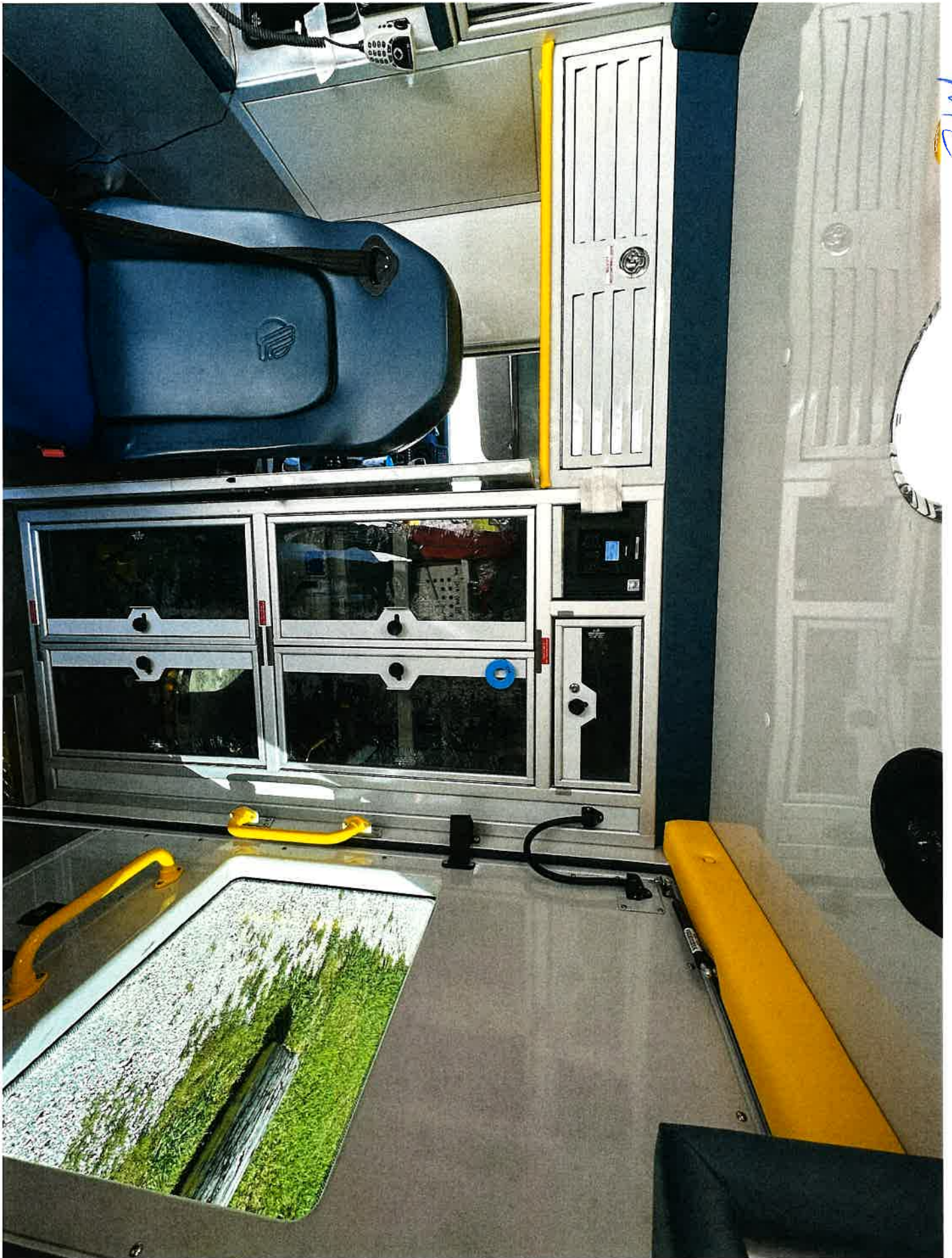


DRYER ACCESS DOOR

M2



M2



M2



M2



212

M2





M2



M2



M2

M2

TIRE AND LOADING INFORMATION

GVWR (incl. cargo) 2715 TOTAL 5 FRONT 2 REAR 3
 The combined weight of occupants and cargo should never exceed:
 1325 KG 2943 LBS

ORIGINAL TIRE SIZE	ORIGINAL TIRE INFL. PRESSURE
LT225/75R16	FRONT 75 PSI 5.1 MPa
LT225/75R16	REAR 80 PSI 5.5 MPa
LT225/75R16	SPARE 80 PSI 5.5 MPa

SEE OWNERS MANUAL FOR ADDITIONAL INFORMATION

DD06261EN

VEHICLE TYPE: MPV

GVWR	6577	KG	(14500 Lbs)
GVWR FRONT	2288	KG	(5000 Lbs)
GVWR REAR	4364	KG	(9600 Lbs)
W/PSI COLD	517	KPa	(75 PSI)
LT225/75R16			(16x6 OK)
W/PSI COLD	552	KPa	(80 PSI)
LT225/75R16			(16x6 OK)

TIRE SELECTION AND RIMS

Exterior Primary Color:
 Exterior Secondary Color:
 Date of INC VEH MFG: MO. 12 YR 2019
 Ford Motor Co
 Incomplete vehicle manufactured by:
 Date of manufacture: MO. 5 YR 2020
 Dealer's stock number: F19C-2523
 VIN: 1FDXE4FSS6KDC72852

VEHICLE INFORMATION

DEMERS Ambulances Manufacturer Inc.

In effect in MO. 5 YR 2020

Standards, (and Bumper and Theft Prevention Standards, if applicable)

This vehicle has been completed in accordance with the prior manufacturers' (VD, where applicable) This vehicle conforms to all applicable Federal Motor Vehicle Safety Standards, (and Bumper and Theft Prevention Standards, if applicable)

FMVSS CERTIFICATION

M2

INCOMPLETE VEHICLE MFD. BY FORD MOTOR COMPANY

DATE: 12/19

FRONT GAWR: 2268 KG (5000 LB)
WITH LT225/75R16E 115/112S
16x6.0K

TIRES
RIMS

REAR GAWR: 4355 KG (9600 LB)
WITH LT225/75R16E 115/112S
16x6.0K
AT 550 kPa/ 80 PSI COLD

TIRES
RIMS
DIAL

AT 520 kPa/ 75 PSI COLD
VIN: 1FDXE4FS6KDC72852



Equipped with the Ford
Ambulance Prep Pkg

EXT PNT: YZ

RC: 53 DSO:

WB	INT	TR	TP/PS	R	AXLE	TR	SPR
----	-----	----	-------	---	------	----	-----

158 ME

5 F3 P

XXBB

ULN

▽ 5U5A-3520472-AA

MADE IN U.S.A.

M2

CAUTION: WEIGHT IN EXCESS OF LINE 1 RESULTS IN AN OVERLOADED VEHICLE

10	CUSTOMER USABLE Cargo/Equipment Capacity AS BUILT	2943	LBS
9	Total occupant weight - 170 lbs x number of designated seating positions	1050	LBS
8	Total curb weight - AS BUILT	10507	LBS
7	Curb weight - AS BUILT - Rear axle	6687	LBS
6	Curb weight - AS BUILT - Front axle	3821	LBS
5	Minimum Payload per KKK-A-1822	2250	LBS
4	OEM GVWR	14500	LBS
3	OEM GAWR-Rear	9600	LBS
2	OEM GAWR-Front	5000	LBS
1	Ambulance Year, Make, Model	2019 Ford Motor Co	E450
	Ambulance Model, Type, Prod #	MX164E	Type III-AD F19C-2523

Ambulance Manufacturer's Name: DEMERS, Ambulance Manufacturer Inc

WEIGHT/AYLOAD CERTIFICATION

NOTICE: THIS VEHICLE, AS MANUFACTURED, CONFORMS TO THE PAYLOAD REQUIREMENTS OF THE VEHICLE CHASSIS MANUFACTURER. USERS SHALL NOT LOAD VEHICLE ABOVE THE GVWR LIMITS SHOULD DETERMINE THAT THE ACTUAL LOAD TO BE PLACED ON THE VEHICLE DOES NOT EXCEED THE USABLE PAYLOAD.

VEHICLE TYPE: MPV

Date of test: 2020-05-26

g. Test data:

(1) Lowest DC voltage at common point during test with loads 1-11: 13.3 V

(2) Lowest DC voltage at common point during test with loads 1-12: 13.3 V

(3) Engine speed control setting: AUTOMATIC (CHARGE PROTECT) RPM

(4) DC current draw at common point during test with loads 1-11: 120 A

(5) DC current draw at common point during test with loads 1-12 without load: 120 A

h. Generating reserve:

(1) Generating reserve (+)/overload (-) with loads 1-11: 105 A

(2) Generating reserve (+)/overload (-) with loads 1-12 without load: 105 A

i. Distance between (Z) & (G): 105 A

i. Date of test: 2020-05-26

f. Electrical generating system data:

(1) Alternator or generator make/model: MOTORCRAFT

(2) Maximum 12V DC manufacturer's current rating at 200F (93C) at 14V: Single 225 A

d. Chassis manufacturer: Ford Motor Co

c. Ambulance type/model: Type III-AD - Model E450

b. Name of ambulance manufacturer: DEMERS, Ambulance Manufacturer Inc

NOTE: IF EQUIPPED WITH A LOAD MANAGEMENT SYSTEM, CERTAIN FUNCTIONS WITHIN THIS VEHICLE SHOULD BE MANAGED AUTOMATICALLY. DURING TESTING TO ENSURE PROPER SEATING, LOAD DISTRIBUTION, AND WEIGHTS.

ii. The data furnished herein is based upon simultaneous turning on the following electrical equipment and electrical load(s):

(1) Ignition system

(2) Headlights (low beam) and all FMVSS running lights

(3) Windshield wiper (low speed)

(4) Cab air conditioning (at coldest setting with highest blower speed)

(5) Radio in receiving mode (or equal load, if not equipped)

(6) Patient module dome lighting (in high intensity setting)

(7) Patient module air conditioning (at coldest setting with highest blower speed)

(8) Emergency warning lighting system in "clear-right-of-way" mode (3.8.2)

(9) 10 amp medical load or equal

(10) Left and right side flood lights

(11) Rear flood light

(12) Optional 12-volt DC equipment and lights

This vehicle is _____ / is not equipped with a load management system.

AMBULANCE 12 VOLT DC ELECTRICAL SYSTEM

This vehicle has been tested in accordance with Ambulance Electrical Systems, AMD Standard 005.

VEHICLE TYPE: AMB - MPV

Signature of operator performing test: *[Signature]*

Date of test: 2020-05-26

Maximum allowable pressure loss: 5 psi (351 g / sq cm)

INITIAL CONDITIONS

Temperature: 77 °F

Pressure: 80 psi (5.62 Kg / sq cm)

AFTER 1 HOURS

Temperature: 77 °F

Pressure: 80 psi (5.62 Kg / sq cm)

FINAL CONDITIONS (2 HOURS)

Temperature: 77 °F

Pressure: 80 psi (5.62 Kg / sq cm)

Pressure Loss: _____ psi (_____ Kg / sq cm)

Pressure Loss: _____ psi (_____ Kg / sq cm)

This vehicle as been tested and is certified to be in compliance with the oxygen system proof pressure and leakage requirements of AMD Standard 015

AMBULANCE MAIN OXYGEN SYSTEM TEST

FEDERAL SPECIFICATION FOR THE STAR-OF-LIFE AMBULANCE CERTIFICATION

Address: 28 Richelieu, Bevel (Quebec) Canada, J3G 4N5

Date of man: 2020-05-26

Man by: DEMERS Ambulance Manufacturer Inc

Excursion taken? No Yes

Final stage ambulance manufacturer ID number: F19C-2523

VIN: 1FDXE4F56KDC2852

Vehicle type: III-AD

OEM chassis model, year of manufacturer: Ford Motor Co 2019

NOTICE: THIS VEHICLE, AS MANUFACTURED, CONFORMS TO THE PAYLOAD REQUIREMENTS OF THE FEDERAL AMBULANCE SPECIFICATION KKK-A-1822. USERS SHALL NOT LOAD VEHICLES ABOVE THE GVWR, GAWRS OR EXCEED THE TOTAL USABLE PAYLOAD OR CAPACITY LISTED BELOW.

Total usable cargo/equipment capacity: 2943 LBS

(Total remaining weight capacity of equipment and cargo evenly distributed interior and exterior compartments the user may add)

This ambulance conforms to Federal Specification KKK-A-1822 F