

M4





M4

WV



ANDERSON COUNTY



EMS

AMBULANCE

GASOLINE

01-01-72  
AMBULANCE PERMIT  
STATE OF WEST VIRGINIA

104



ANDERSON COUNTY



EMS

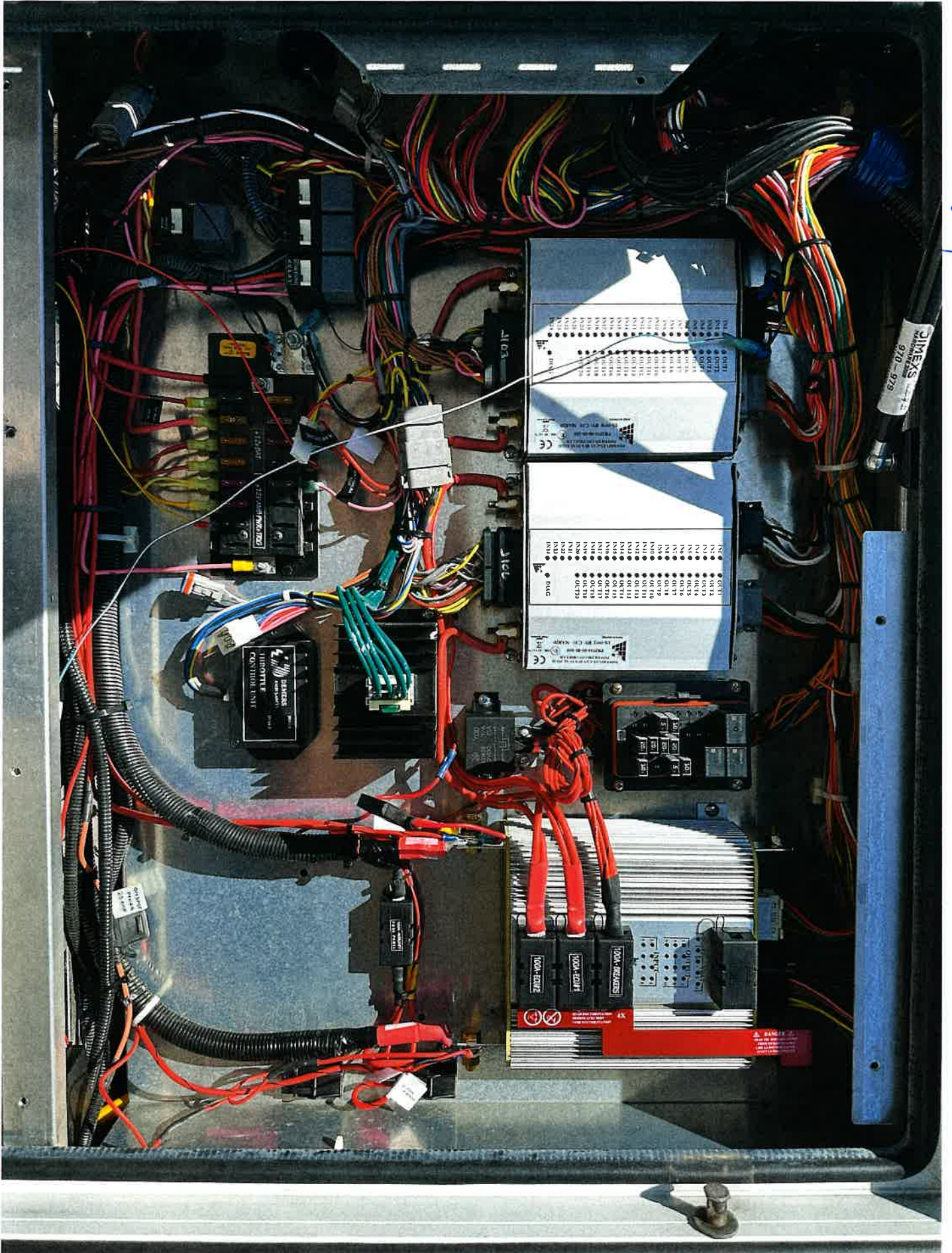
AMBULANCE

4



FW

WV



JIMEXAS  
970-979

N1 N2 N3 N4 N5 N6 N7 N8 N9 N10 N11 N12 N13 N14 N15 N16 N17 N18 N19 N20  
+5V  
GND GND

N1 N2 N3 N4 N5 N6 N7 N8 N9 N10 N11 N12 N13 N14 N15 N16 N17 N18 N19 N20  
+5V  
GND GND

SERVO MOTOR  
SERVO MOTOR CONTROL UNIT

100A-FAN5V  
100A-FAN5V  
100A-FAN5V  
4K  
DANGER

100A-TERMS

100A-TERMS

100A-TERMS

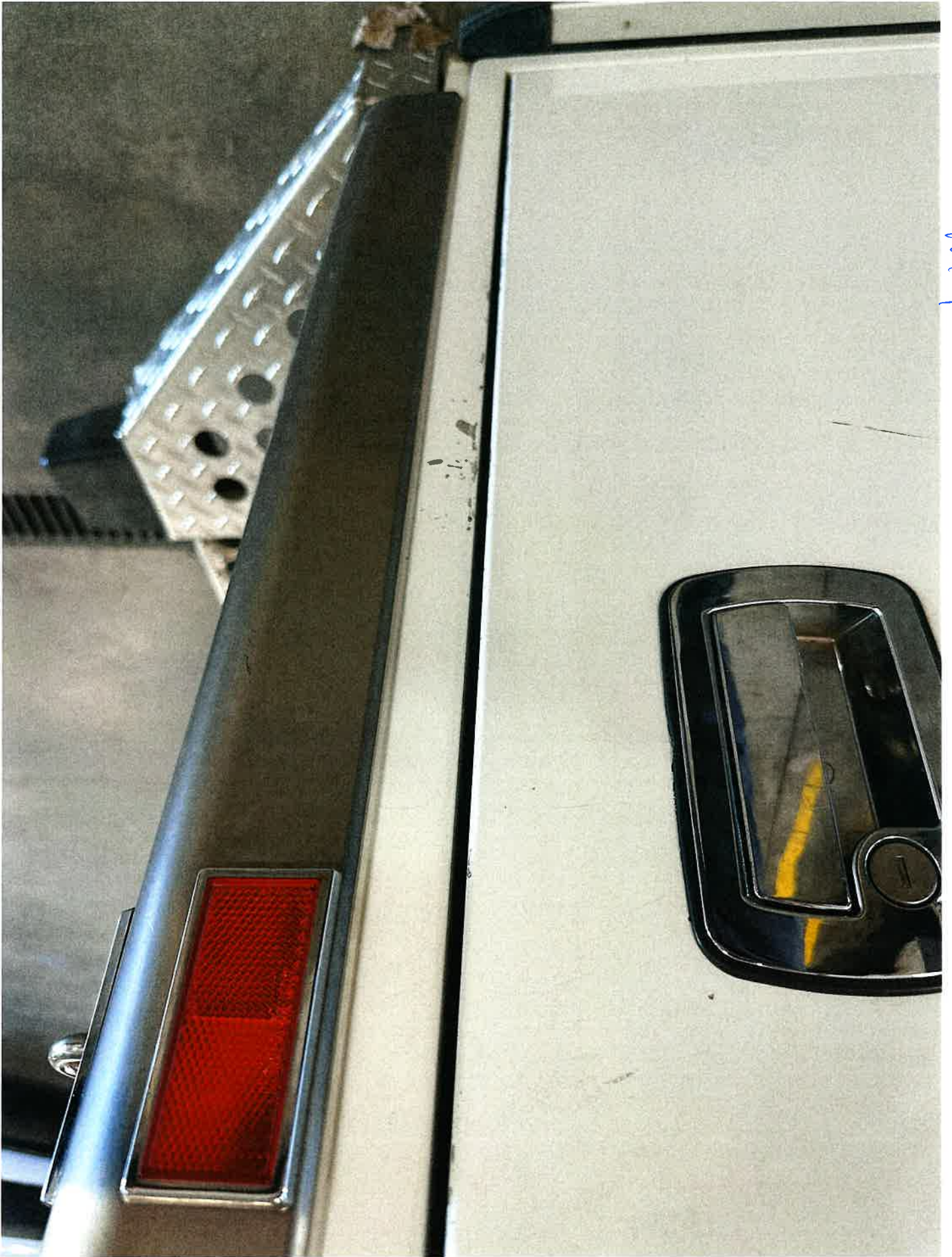


7M



M4





7M

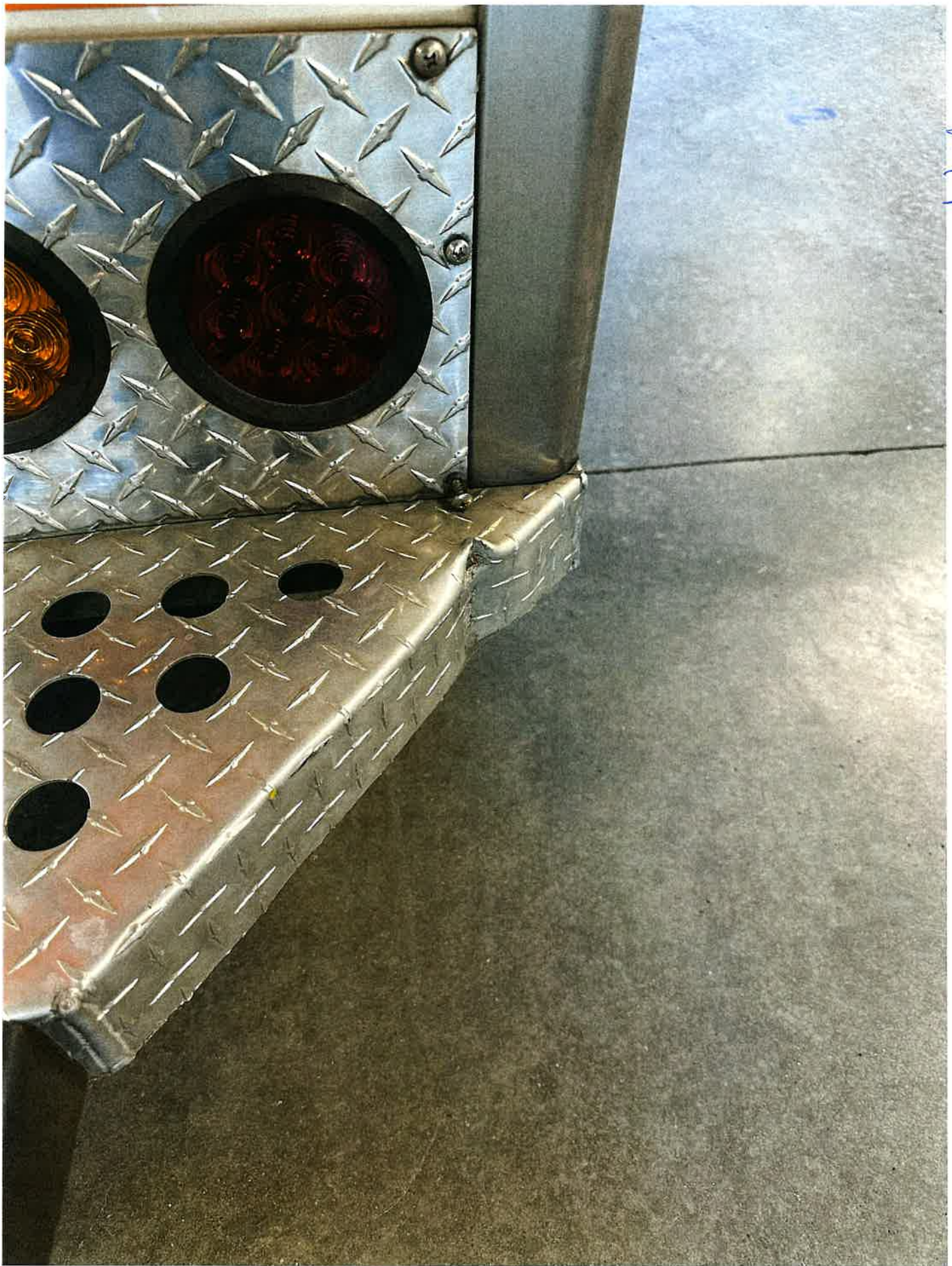
**GASOLINE**

hwy





M2



M4



MD



M2

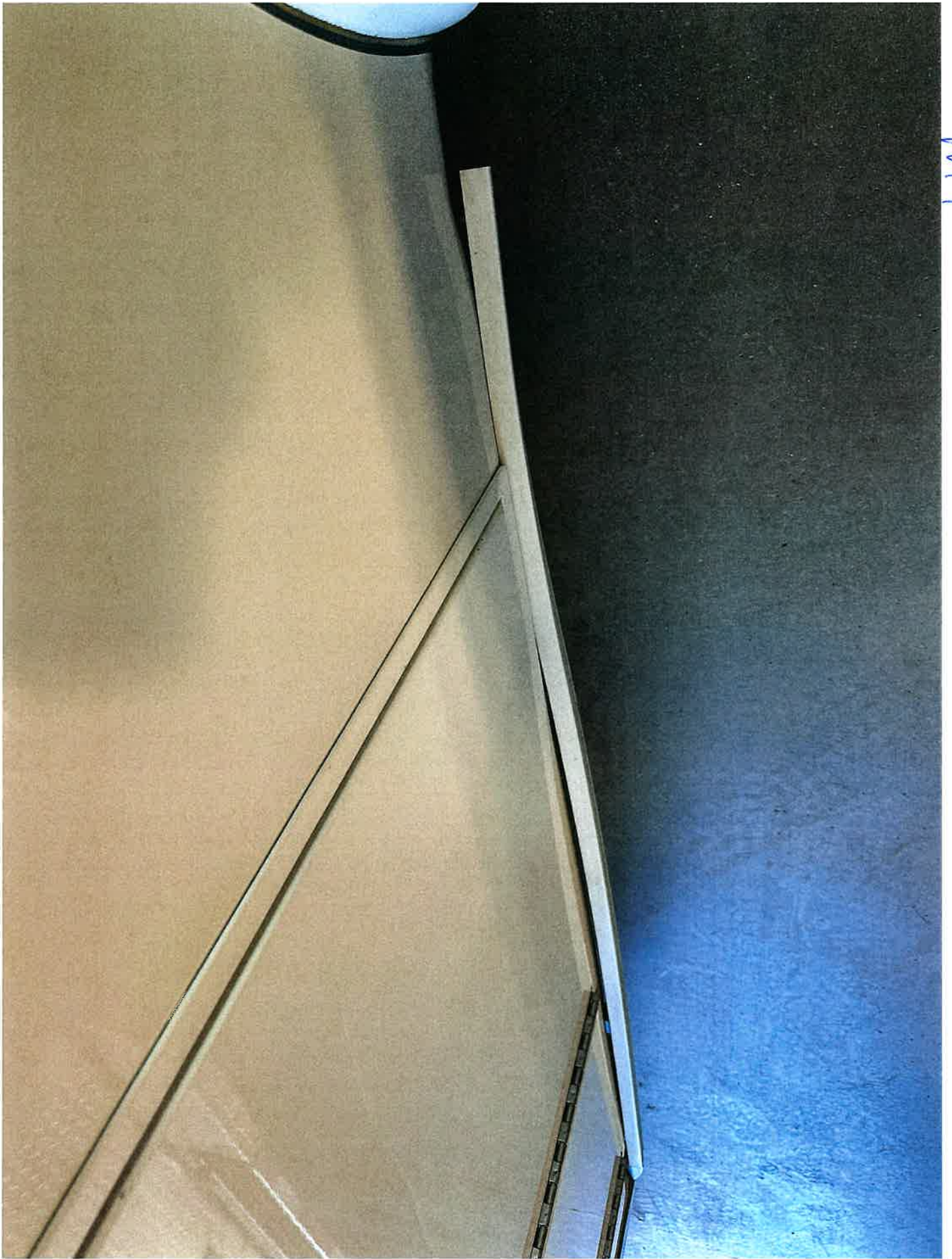


h24



W4





104



M4



M4



MM



MD



M4



M4



M4

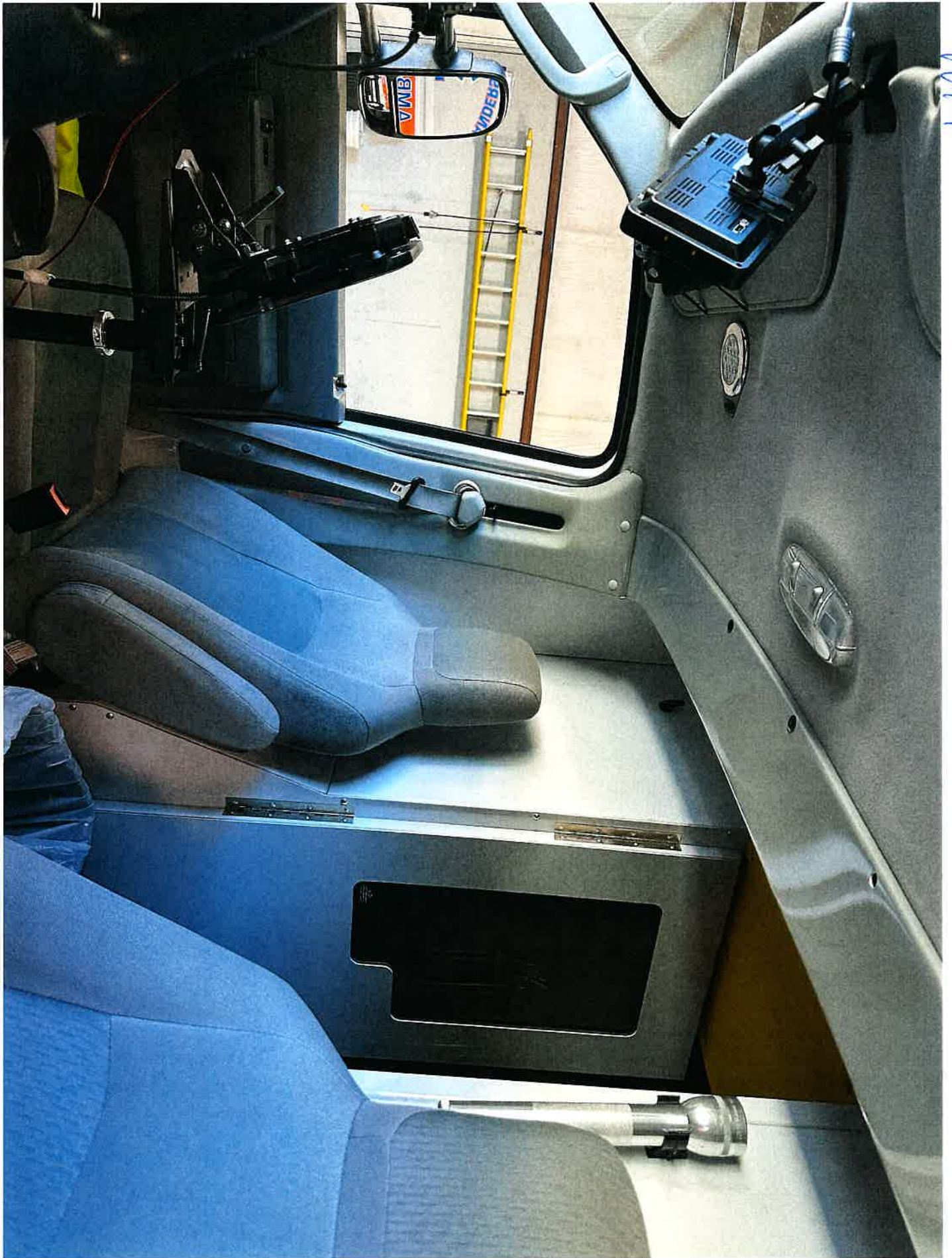




M4



HW



7/11

104

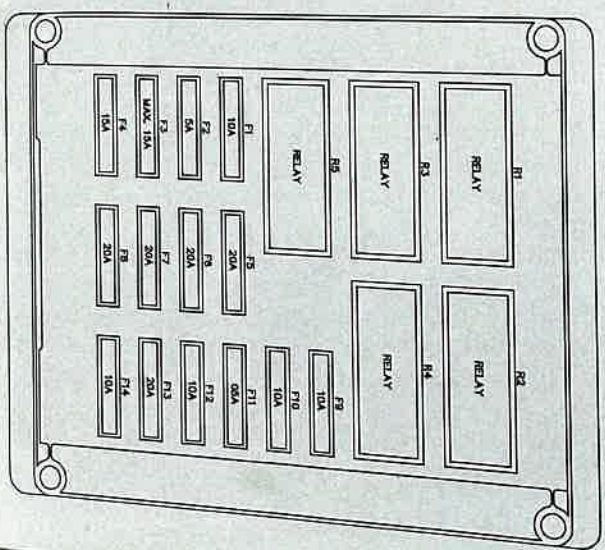


# AMBULANCE POWER

PLEASE CONTACT US BEFORE  
HANDLING THIS BOARD.  
WARRANTY OF THIS VEHICLE COULD BE VOID.

1-800-363-7591 • (450) 467-4683 [www.demmers-ambulances.com](http://www.demmers-ambulances.com)

- R1 - LEFT FLASHER RELAY
- R2 - RIGHT FLASHER RELAY
- R3 - OPTION 4 RELAY
- R4 - HEATER VALVE RELAY
- R5 - REAR WINDOW DEFROST
  
- F1 - FLASHER & CLOCK
- F2 - DATA RECORDER
- F3 - OPTION 4
- F4 - REAR WINDOW DEFROST (OPTION)
- F5 - POWER OUTLET 1
- F6 - POWER OUTLET 2
- F7 - POWER OUTLET 3
- F8 - POWER OUTLET 4
- F9 - SUCTION (OPTION)
- F10 - IV WARMER (OPTION)
- F11 - HEATER VALVE
- F12 - TOUCH SCREEN (OPTION)
- F13 - HOWLER (OPTION)
- F14 - FOG LT. (OPTION)
  
- OPTIONAL



MPV

**TIRE AND LOADING INFORMATION**

**SEATING CAPACITY: TOTAL: 5 | FRONT: 2 | REAR: 3**  
 The combined weight of occupants and cargo should never exceed:  
 1412 KG

**ORIGINAL TIRE INFO. PRESSURE**

ORIGINAL TIRE SIZE	FRONT	76	PSI	517	KPa
L722575R16	REAR	80	PSI	552	KPa
L722575R16	SPARE	80	PSI	552	KPa

**SEE OWNER'S MANUAL FOR ADDITIONAL INFORMATION**

D008261EIN

**VEHICLE TYPE: MPV**

GWR	KG	( 14500 Lbs)	6577
GAWR FRONT	KG	( 5000 Lbs)	2268
with L722575R16	PSI	( 75 )	517
MPa PSI COLD	KG	( 9600 Lbs)	4354
GAWR REAR	KG	( 16x6.0K tires)	4354
with L722575R16	PSI	( 80 )	552
MPa PSI COLD	KG	( 16x6.0K tires)	552

**TIRE SELECTION AND RIMS**

Export Secondary Drive  
 Export Primary Drive

Date of 1st VEH REG: **MO. 11 YR 2019** YZ

**Ford Motor Co**  
 Foreign vehicle manufactured by

Country stock number: **F19C-1955**

Date of manufacture: **MO. 5 YR 2020**

VIN: **1FOXE4F5XKDC66410**

**VEHICLE INFORMATION**  
 Ambulance Manufacturer Inc.

**DEMERS**

This vehicle has been completed in accordance with the prior manufacturer's NDI, where applicable. This vehicle conforms to all applicable Federal Motor Vehicle Safety Standards, (and Bumper and Theft Prevention Standards, if applicable) in effect in MO. 5 YR 2020

**FINISS CERTIFICATION**

114

INCOMPLETE VEHICLE MFD. BY FORD MOTOR COMPANY

DATE: 11/19 2268 KG (5000 LB)  
 FRONT GAWR: 75R16E 115/1125  
 WITH 16x6 OK

TIRES  
RIMS

AT 520 KPa/ 75 PSI COLD  
 VIN: 1FDXE4FSXKD666410

REAR GAWR: 6577 KG (14500 LB)  
 WITH 16x6 OK  
 REAR GAWR: 4335 KG (9600 LB)  
 WITH 17225/75R16E 115/1125

TIRES  
RIMS  
QUAL

AT 550 KPa/ 80 PSI COLD

Equipment with the Ford  
Ambulance Prep Pkg

RC 53 DSO  
 AXLE TR | SPR  
 F3 | P  
 LIN | XXBB

EXT.PNT. YZ | INT TR | TP/PS | R | AXLE TR | SPR  
 W8 | ME | S

MADE IN U.S.A.

3USA 3330473 AA

**OLATHIE**  
 OLATHIE  
 Sales 913-782-0081  
 EMERGENCY NUMBERS

Olathe Ford Lincoln Service  
 Olathe Ford Lincoln Body Shop  
 Olathe Ford Lincoln Quicklane  
 Ford Roadside Assistance

W-1

**CAUTION: WEIGHT IN EXCESS OF LBS RESULTS IN AN OVERLOADED VEHICLE**

10. CUSTOMER USABLE Cargo/Equipment Capacity AS BUILT	3113	LBS
9. Total occupant weight - (75 lbs x number of designated seating positions)	1050	LBS
8. Total curb weight - AS BUILT	10337	LBS
7. Curb Weight - AS BUILT - Rear axle	6572	LBS
6. Curb Weight - AS BUILT - Front axle	3765	LBS
5. Minimum Payload per KKK-A-1822	2250	LBS
4. OEM GVWR	14500	LBS
3. OEM GVWR-Rear	9600	LBS
2. OEM GVWR-Front	5000	LBS
1. Ambulance Model, Year, Make, Prod.#	2019 Ford Motor Co	E450
Ambulance Manufacturer's Name	DEMERS, Ambulance Manufacturer Inc	

2019 Ford Motor Co  
Type: III-AD F19C-1955  
MX164E  
E450

**WEIGHT/PAYLOAD CERTIFICATION**

THIS VEHICLE AS MANUFACTURED, CONFORMS TO THE PAYLOAD REQUIREMENTS OF THE VEHICLE CHASSIS MANUFACTURER. USERS SHALL NOT LOAD THIS VEHICLE ABOVE THE GVWR. USERS SHOULD DETERMINE THAT THE ACTUAL LOAD TO BE PLACED ON THE VEHICLE DOES NOT EXCEED THE USABLE PAYLOAD.

**VEHICLE TYPE:** MPV

**Date of test:** 2020-05-23

(1) Generating reserve (+) / overload (-) with loads 1-11: 101

(2) Generating reserve (+) / overload (-) with loads 1-12 without load: 101

(3) Engine speed control setting: AUTOMATIC (CHARGE PROTECT) RPM

(4) DC current draw at common point during test with loads 1-11: 124

(5) DC current draw at common point during test with loads 1-12 without load: 124

(6) Voltage at common point during test with loads 1-11: 13.9

(7) Voltage at common point during test with loads 1-12: 13.9

(8) Test data:

(1) Lowest DC voltage at common point during test with loads 1-11: 13.9 V

(2) Lowest DC voltage at common point during test with loads 1-12: 13.9 V

(3) Engine speed control setting: AUTOMATIC (CHARGE PROTECT) RPM

(4) DC current draw at common point during test with loads 1-11: 124 A

(5) DC current draw at common point during test with loads 1-12 without load: 124 A

(6) Generating reserve (+) / overload (-) with loads 1-11: 101 A

(7) Generating reserve (+) / overload (-) with loads 1-12 without load: 101 A

(8) Difference between (2) & (6): 101

(9) Difference between (2) & (5): 101

(10) Date of test: 2020-05-23

**AMBULANCE 12 VOLT DC ELECTRICAL SYSTEM**

This vehicle has been tested in accordance with Ambulance Electrical Systems, AMD Standard 005.

The data furnished herein is based upon simultaneously turning on the following electrical equipment and electrical load(s):

- (1) Ignition system
- (2) Headlights (low beam) and all FMVSS running lights
- (3) Windshield wiper (low speed)
- (4) Cab air conditioning (at coldest setting with highest blower speed)
- (5) Radio in receiving mode (or equal load, if not equipped)
- (6) Patient module dome lighting (at highest intensity setting)
- (7) Patient module air conditioning (at coldest setting with highest blower speed)
- (8) Emergency warning lighting system in "clear - night-of-way" mode (3.8.2)
- (9) 10 amp medical load or equal
- (10) Left and right side flood lights
- (11) Rear flood light
- (12) Optional 12-volt DC equipment and lights

This vehicle is X / is not X equipped with a load management system.

**NOTE:** IF EQUIPPED WITH A LOAD MANAGEMENT SYSTEM, CERTAIN FUNCTIONS (ITEMS LISTED ABOVE) MAY HAVE AUTOMATICALLY BEEN LIMITED FROM OPERATING BY THE LOAD MANAGEMENT SYSTEM DURING TESTING. EQUIPMENT WITH AN ACCEPTABLE ELECTRICAL LOAD MANAGEMENT SYSTEM SHOULD BE ACTIVATED DURING TESTING TO PROMOTE MAXIMUM ELECTRICAL LOAD UTILIZATION.

**DEMERS, Ambulance Manufacturer Inc**  
Type: III-AD - Model: E450  
Ford Motor Co  
Vehicle Identification Number (VIN): 1FDXE4F5SXKD066410  
Motorcraft  
(2) Maximum 12V DC manufacturer's current rating at 200F (93C) at 14V  
Single 225  
DC:

**VEHICLE TYPE: AMB - MPV**

**DEMERS AMBULANCES**

Date of test: 2020-05-23

Signature of operator performing test: \_\_\_\_\_

Maximum allowable pressure loss: 5 psi (345 g / sq cm)

**INITIAL CONDITIONS**

Temperature: 71.6 °F

Pressure: 80 psi ( 5.62 Kg / sq cm)

**AFTER 1 HOURS**

Temperature: 71.6 °F

Pressure: 80 psi ( 5.62 Kg / sq cm)

**FINAL CONDITIONS (2 HOURS)**

Temperature: 73.4 °F

Pressure: 80 psi ( 5.62 Kg / sq cm)

Pressure Loss: 0 psi ( 0 Kg / sq cm)

Maximum allowable pressure loss: 5 psi (345 g / sq cm)

This vehicle has been tested and is certified to be in compliance with the oxygen system proof pressure and leakage requirements of AMD Standard 015.

**AMBULANCE MAIN OXYGEN SYSTEM TEST**

**FEDERAL SPECIFICATION FOR THE STAR-OF-LIFE AMBULANCE CERTIFICATION**

DEMERS Ambulance Manufacturer Inc

Date of test: 2020-05-23

38 Ritchieau, Beolou (Quebec) Canada, J3G 4N5

This ambulance conforms to Federal Specification KKK-A-1822 F

Final stage ambulance manufacturer's number: F19C-1955

Vehicle type: III-AD

VIN: 1FDXE4F5SXKD066410

Ford Motor Co

2019

Total usable cargo/equipment capacity: 3113 LBS

(Total remaining weight capacity of equipment and cargo evenly distributed interior and exterior compartments the user may add)

NOTICE: THIS VEHICLE AS MANUFACTURED, CONFORMS TO THE PAYLOAD REQUIREMENTS OF THE FEDERAL AMBULANCE SPECIFICATION KKK-A-1822. USERS SHALL NOT LOAD VEHICLES ABOVE THE GVWR, GVWRS OR EXCEED THE TOTAL USABLE PAYLOAD OR CAPACITY LISTED BELOW.

Total usable cargo/equipment capacity: 3113 LBS