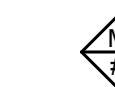
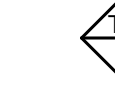


BOARD LEGEND

-  PROVIDE MOUNTED MARKER BOARD WITH MATTE FINISH UNLESS OTHERWISE NOTED. DIMENSIONS SHOWN ARE FROM EDGE OF WALL OPENING TO CENTERLINE OF BOARD. RE: G021 FOR MOUNTING HEIGHT, ELECT FOR POWER AND TECHNOLOGY FOR EQUIPMENT
-  PROVIDE MOUNTED TELEVISION MONITOR TECHNOLOGY, 70" UNO, LOCATED AS DIMENSIONED RE: G021 FOR MOUNTING HEIGHT, ELECT FOR POWER AND TECHNOLOGY FOR EQUIPMENT

FLOOR PLAN GENERAL NOTES

- 1 ALL DIMENSIONS ARE FROM COLUMN REFERENCE LINE TO FACE OF PARTITION, UNLESS NOTED OTHERWISE.
- 2 REFER TO CODE DRAWINGS (G0 SERIES) FOR LOCATIONS AND EXTENTS OF FIRE RATED ASSEMBLIES. IF PARTITION DISCREPANCY OCCURS BETWEEN CODE PLANS AND FLOOR PLANS, PROVIDE THE PARTITION TYPE INDICATED WITH THE MOST STRINGENT REQUIREMENTS.
- 3 REFER TO DRAWING G021 FOR TYPICAL MOUNTING HEIGHTS.
- 4 REFER TO DRAWING A421 FOR ALL INTERIOR PARTITION TYPES.
- 5 ALL MASONRY PARTITIONS ARE TYPE "K8" UNLESS NOTED OTHERWISE.
- 6 ALL GYPSUM PARTITIONS ARE TYPE "C3" UNLESS NOTED OTHERWISE.
- 7 ALL HOUSE KEEPING PADS INDICATED ARE FOR REFERENCE ONLY. COORDINATE ACTUAL SIZE AND LOCATION WITH APPROVED MECHANICAL AND PLUMBING SHOP DRAWINGS.
- 8 FIRST FLOOR REFERENCE ELEVATION 100'-0" = 902.00' DATUM ON CIVIL DRAWINGS.
- 9 PROVIDE STAINLESS STEEL CORNER GUARDS AT ALL GYP. BD. OUTSIDE CORNERS AT FLOOR LEVEL.
- 10 PROVIDE FIRE RATED CONSTRUCTION AROUND ALL SHAFT ENCLOSURES.

CONSTRUCTION KEYNOTES

- 1 ALUM. DISPLAY CASE SYSTEM
- 2 WALL MOUNTED BARRIER FREE AUTOMATIC DOOR OPENER ACTUATOR SWITCH
- 3 SEMI-RECESSED FIRE EXTINGUISHER CABINET
- 4 ELECTRIC WATER COOLER WITH BOTTLE FILL STATION. RE: PLUMBING DRAWINGS
- 5 OWNER PROVIDED, CONTRACTOR INSTALLED ARCHERY CURTAIN AND TRACK
- 6 OPERABLE WALL PARTITION AND TRACK
- 7 WALL MOUNTED RECESSED KNOX BOX
- 8 ROOF ACCESS LADDER. RE: DETAILS ON A357
- 9 TOP ROLLING GYM DIVIDER CURTAIN
- 10 CEILING SUPPORTED FOLDING BASKETBALL BACKSTOP, TYP.
- 11 TELESCOPING BLEACHER SYSTEM
- 12 CORRIDOR METAL LOCKERS. RE: INTERIOR ELEVATIONS FOR TYPE AND CONFIGURATION
- 13 CONFIRM ELEVATOR ROUGH OPENING REQUIREMENTS WITH APPROVED ELEVATOR SHOP DRAWINGS
- 14 ELECTRONIC SCOREBOARD
- 15 6" DIA. CONC. FILLED STEEL BOLLARD
- 16 4" HIGH CONC. HOUSE KEEPING PAD TYP. 6" HIGH CONC. HOUSE KEEPING PAD AT AHUS. RE: STRUCTURAL AND MECHANICAL DRAWINGS
- 17 4" HIGH CONC. CURB AROUND PERIMETER OF SPACE AND ALL FLOOR PENETRATIONS.
- 18 GALV. STEEL BAR GRATING PLATFORM AND STEPS. RE: DETAILS ON A357
- 19 PRE-FINISHED METAL GATE WITH LATCHING HARDWARE
- 20 WRESTLING MAT HOIST
- 21 PROVIDE 20x20" NEOPRENE MEMBRANE OVER ROOF MEMBRANE AT KITCHEN EXHAUST HOODS, ADHERE AND FLASH NEOPRENE TO ROOF MEMBRANE PER ROOF MANUF. RECOMMENDATIONS.
- 22 LOCKER ADA BENCH - WALL MOUNTED; 20" MIN. DEPTH
- 23 LOCKER ROOM FREESTANDING BENCH

Final Plans for Bidding and Construction

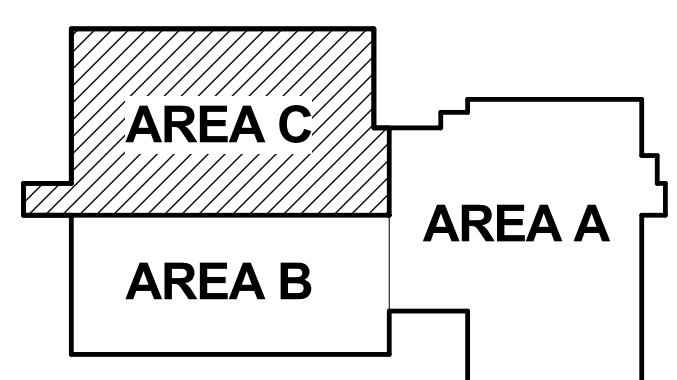
PORTAGE PUBLIC SCHOOLS

Portage Public Schools
THE FUTURE LEARNS HERE

NORTH MIDDLE SCHOOL
PORTAGE, MICHIGAN

DRAWN: Author
CHECKED: Checker
SCALE: As indicated

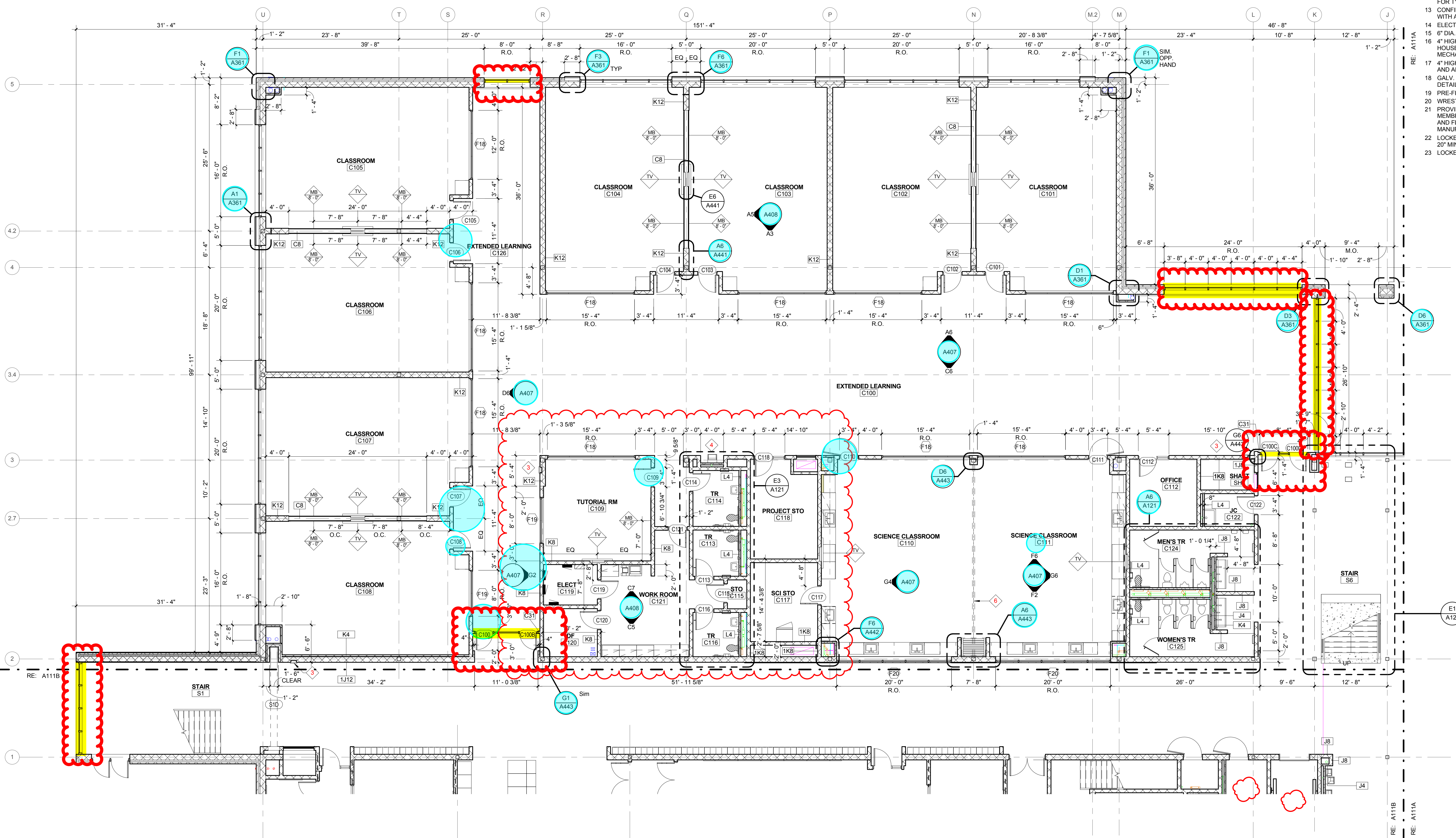
ISSUE:
2017.03.24 CONSTRUCTION
2017.06.12 PR.01
2017.06.29 PR.02
2017.08.11 PR.03



KEY PLAN (NTS)
SHEET TITLE:
FIRST LEVEL FLOOR PLAN - AREA C

A111C

Project #: 214100247



A4 FIRST LEVEL FLOOR PLAN - AREA C
1/8" = 1'-0"