

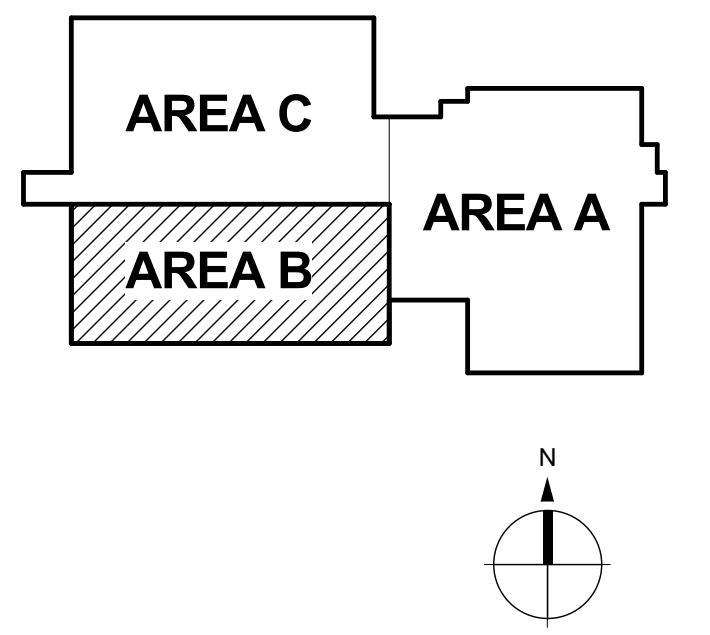
**PORTAGE PUBLIC SCHOOLS**

**Portage Public Schools**  
THE FUTURE LEARNS HERE

**NORTH MIDDLE SCHOOL  
PORTAGE, MICHIGAN**

DRAWN: Author  
CHECKED: Checker  
SCALE: 1/8" = 1'-0"

ISSUE:  
2017.03.24 CONSTRUCTION  
2018.06.14 PR 11

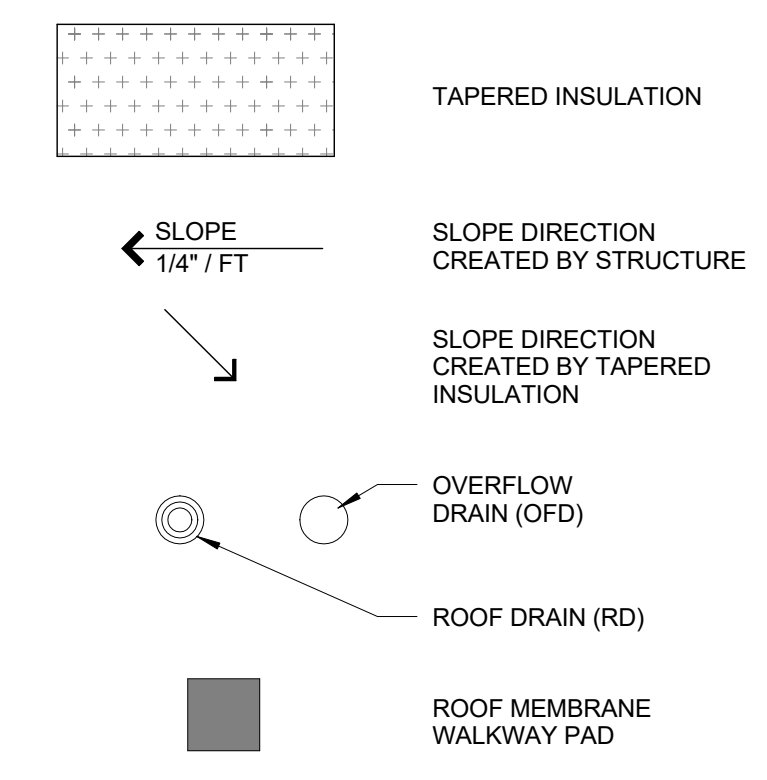


KEY PLAN (NTS)  
SHEET TITLE:  
**THIRD LEVEL FLOOR PLAN - AREA B**

**A113B**

Project #: 214100247

**ROOF LEGEND**



**CONSTRUCTION KEYNOTES**

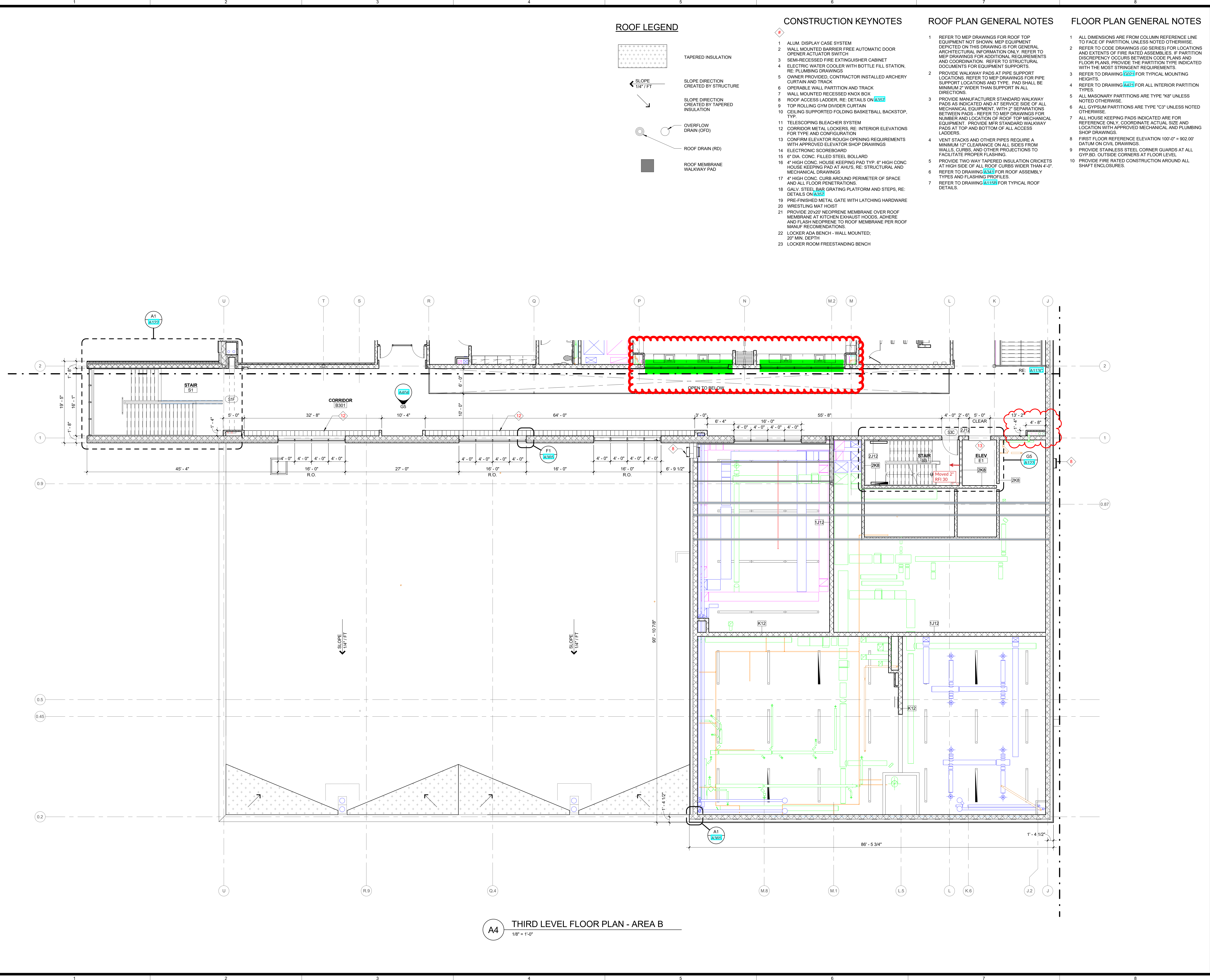
- 1 ALUM. DISPLAY CASE SYSTEM
- 2 WALL MOUNTED BARRIER FREE AUTOMATIC DOOR OPENER ACTUATOR SWITCH
- 3 SEMI-RECESSED FIRE EXTINGUISHER CABINET
- 4 ELECTRIC WATER COOLER WITH BOTTLE FILL STATION, RE: PLUMBING DRAWINGS
- 5 OWNER PROVIDED, CONTRACTOR INSTALLED ARCHERY CURTAIN AND TRACK
- 6 OPERABLE WALL PARTITION AND TRACK
- 7 WALL MOUNTED RECESSED KNOX BOX
- 8 ROOF ACCESS LADDER, RE: DETAILS ON A357
- 9 TOP ROLLING GYM DIVIDER CURTAIN
- 10 CEILING SUPPORTED FOLDING BASKETBALL BACKSTOP, TYP.
- 11 TELESCOPING BLEACHER SYSTEM
- 12 CORRIDOR METAL LOCKERS, RE: INTERIOR ELEVATIONS FOR TYPE AND CONFIGURATION
- 13 CONFIRM ELEVATOR ROUGH OPENING REQUIREMENTS WITH APPROVED ELEVATOR SHOP DRAWINGS
- 14 ELECTRONIC SCOREBOARD
- 15 6" DIA. CONC. FILLED STEEL BOLLARD
- 16 4" HIGH CONC. HOUSE KEEPING PAD TYP. 6" HIGH CONC HOUSE KEEPING PAD AT AHUS, RE: STRUCTURAL AND MECHANICAL DRAWINGS
- 17 4" HIGH CONC. CURB AROUND PERIMETER OF SPACE AND ALL FLOOR PENETRATIONS
- 18 GALV. STEEL BAR GRATING PLATFORM AND STEPS, RE: DETAILS ON A357
- 19 PRE-FINISHED METAL GATE WITH LATCHING HARDWARE
- 20 WRESTLING MAT HOIST
- 21 PROVIDE 20'x20' NEOPRENE MEMBRANE OVER ROOF MEMBRANE AT KITCHEN EXHAUST HOODS, ADHERE AND FLASH NEOPRENE TO ROOF MEMBRANE PER ROOF MANUF. RECOMMENDATIONS.
- 22 LOCKER ADA BENCH - WALL MOUNTED, 20" MIN. DEPTH
- 23 LOCKER ROOM FREESTANDING BENCH

**ROOF PLAN GENERAL NOTES**

- 1 REFER TO MEP DRAWINGS FOR ROOF TOP EQUIPMENT NOT SHOWN. MEP EQUIPMENT DEPICTED ON THIS DRAWING IS FOR GENERAL ARCHITECTURAL INFORMATION ONLY. REFER TO MEP DRAWINGS FOR ADDITIONAL REQUIREMENTS AND COORDINATION. REFER TO STRUCTURAL DOCUMENTS FOR EQUIPMENT SUPPORTS.
- 2 PROVIDE WALKWAY PADS AT PIPE SUPPORT LOCATIONS. REFER TO MEP DRAWINGS FOR PIPE SUPPORT LOCATIONS AND TYPE. PAD SHALL BE MINIMUM 2" WIDER THAN SUPPORT IN ALL DIRECTIONS.
- 3 PROVIDE MANUFACTURER STANDARD WALKWAY PADS AS INDICATED AND AT SERVICE SIDE OF ALL MECHANICAL EQUIPMENT, WITH 2" SEPARATIONS BETWEEN PADS - REFER TO MEP DRAWINGS FOR NUMBER AND LOCATION OF ROOF TOP MECHANICAL EQUIPMENT. PROVIDE MFR STANDARD WALKWAY PADS AT TOP AND BOTTOM OF ALL ACCESS LADDERS.
- 4 VENT STACKS AND OTHER PIPES REQUIRE A MINIMUM 12" CLEARANCE ON ALL SIDES FROM WALLS, CURBS, AND OTHER PROJECTIONS TO FACILITATE PROPER FLASHING.
- 5 PROVIDE TWO WAY TAPERED INSULATION CRICKETS AT HIGH SIDE OF ALL ROOF CURBS WIDER THAN 4'-0".
- 6 REFER TO DRAWING A341 FOR ROOF ASSEMBLY TYPES AND FLASHING PROFILES
- 7 REFER TO DRAWING A1159 FOR TYPICAL ROOF DETAILS.

**FLOOR PLAN GENERAL NOTES**

- 1 ALL DIMENSIONS ARE FROM COLUMN REFERENCE LINE TO FACE OF PARTITION, UNLESS NOTED OTHERWISE.
- 2 REFER TO CODE DRAWINGS (90 SERIES) FOR LOCATIONS AND EXTENTS OF FIRE RATED ASSEMBLIES. IF PARTITION DISCREPANCY OCCURS BETWEEN CODE PLANS AND FLOOR PLANS, PROVIDE THE PARTITION TYPE INDICATED WITH THE MOST STRINGENT REQUIREMENTS.
- 3 REFER TO DRAWING A021 FOR TYPICAL MOUNTING HEIGHTS.
- 4 REFER TO DRAWING A421 FOR ALL INTERIOR PARTITION TYPES.
- 5 ALL MASONRY PARTITIONS ARE TYPE "K6" UNLESS NOTED OTHERWISE.
- 6 ALL GYPSUM PARTITIONS ARE TYPE "C3" UNLESS NOTED OTHERWISE.
- 7 ALL HOUSE KEEPING PADS INDICATED ARE FOR REFERENCE ONLY. COORDINATE ACTUAL SIZE AND LOCATION WITH APPROVED MECHANICAL AND PLUMBING SHOP DRAWINGS.
- 8 FIRST FLOOR REFERENCE ELEVATION 100'-0" = 902.00' DATUM ON CIVIL DRAWINGS.
- 9 PROVIDE STAINLESS STEEL CORNER GUARDS AT ALL GYP. BD. OUTSIDE CORNERS AT FLOOR LEVEL.
- 10 PROVIDE FIRE RATED CONSTRUCTION AROUND ALL SHAFT ENCLOSURES.



**A4 THIRD LEVEL FLOOR PLAN - AREA B**  
1/8" = 1'-0"

6/14/2018 1:20:49 PM C:\Users\Public\Documents\Local\_Revit\_Files\2016\_Architecture\_FPS\_NORTH MG 2016 06 06\_segross.rvt