

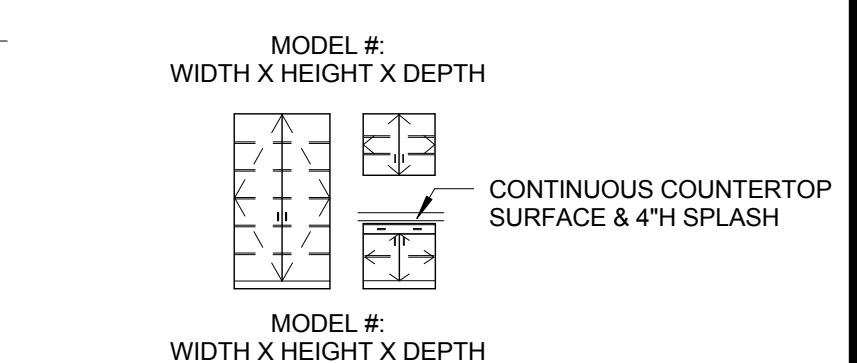
GENERAL CONSTRUCTION NOTES

- A. PROVIDE FILLER PANELS AS REQUIRED AT CASEWORK & MILLWORK INSTALLATION LOCATIONS - TYP. SPECIFICALLY AT LOCATIONS WHERE CASEWORK IS ADJACENT TO WALLS - PROVIDE FILLER PANELS FOR EASE OF OPENING & CLOSING CASEWORK DOORS & DRAWERS.
- B. ALL END PANELS SHALL BE FINISHED TO MATCH ADJACENT CABINERY / CASEWORK.
- C. PORCELAIN WALL TILE SHALL ALWAYS BEGIN WITH THE FULL TILE AT THE TOP OF THE ELEVATION. ADJACENT TO THE CEILING, THE CUT TILE SHALL ALWAYS BE AT THE BASE, ADJACENT TO THE FLOOR SURFACE, UNO.
- D. PROVIDE REGULAR CMU BEHIND FLUSH MOUNT FIXTURES AND DEVICES AT LOCATIONS WHERE SPLIT FACE CMU IS CALLED OUT.
- E. WALLS SHALL BE PAINTED PNT-1, UNO.
- F. WALL BASE SHALL BE RWB-1, UNO.
- G. COVE TILE BASE @ LOCKER ROOM(S) TO EXTEND AT LOCKER BASE, TYP.
- H. PROVIDE FILLER PANELS AS REQUIRED @ END(S) OF LOCKER FINISH.
- I. PARGE ALL CMU WALLS AT PORCELAIN TILE INSTALLATION LOCATIONS, AS REQUIRED, FOR A SMOOTH AND CONSISTENT SUBSTRATE.

CONSTRUCTION KEYNOTES

1. TYPICAL CASEWORK:
 - FACE AND SIDE FINISH OF BASE AND UPPER CABINERY: PLAM-1
 - INTERIOR FINISH: WHITE MELAMINE
 - IF OPEN SHELF, INTERIOR FINISH SHALL BE PLAM-1
 - COUNTERTOP & 4TH SPLASH: PLAM-2
 - HARDWARE PULLS: ADA COMPLIANT, 4" BAR PULL, BRUSHED NICKEL FINISH
2. TYPICAL CASEWORK W/ SINK @ BASE CABINET:
 - FACE AND SIDE FINISH OF BASE AND UPPER CABINERY: PLAM-1
 - INTERIOR FINISH: WHITE MELAMINE
 - COUNTERTOP & 4TH SPLASH: SSM-1
 - HARDWARE PULLS: ADA COMPLIANT, 4" BAR PULL, BRUSHED NICKEL FINISH
3. CASEWORK @ MEDIA CENTER MAKER'S SPACE:
 - FACE AND SIDE FINISH OF BASE AND UPPER CABINERY: PLAM-7
 - INTERIOR FINISH: WHITE MELAMINE
 - COUNTERTOP & 4TH SPLASH: SSM-5
 - HARDWARE PULLS: ADA COMPLIANT, 4" BAR PULL, BRUSHED NICKEL FINISH
4. CASEWORK @ MEDIA CENTER KIOSK:
 - FACE AND SIDE FINISH OF BASE CABINERY: PLAM-7
 - INTERIOR FINISH: WHITE MELAMINE
 - COUNTERTOP & 4TH SPLASH: SSM-6
 - HARDWARE PULLS: ADA COMPLIANT, 4" BAR PULL, BRUSHED NICKEL FINISH
5. CASEWORK @ SCIENCE ROOMS:
 - FACE AND SIDE FINISH OF UPPER CABINERY: PLAM-7
 - FACE AND SIDE FINISH OF BASE CABINERY: PLAM-6
 - INTERIOR FINISH: WHITE MELAMINE
 - COUNTERTOP & 4TH SPLASH: SSM-6
 - HARDWARE PULLS: ADA COMPLIANT, 4" BAR PULL, BRUSHED NICKEL FINISH
6. CLASSROOM STORAGE TOWER CASEWORK:
 - FACE AND SIDE FINISH: PLAM-8
 - INTERIOR FINISH: WHITE MELAMINE
 - HARDWARE PULLS: ADA COMPLIANT, 8" BAR PULL, BRUSHED NICKEL FINISH
7. Z-CLIP MOUNTED GYM WALL PADDING - REFER TO ARCH. SPECS FOR FULL DETAILS
8. Z-CLIP MOUNTED FULL LENGTH FITNESS MIRRORS - TEMPERED GLASS W/ STAINLESS STEEL U-CHANNEL EDGE @ TOP & BOTTOM (TYP.)
9. MILLWORK TEACHING WALL - ALL EXPOSED FACES SHALL BE COVERED WITH VNR-1.
10. ACCENT COLOR @ PAINTED GYP. BULKHEAD IN EXTENDED LEARNING AREA, AS WELL AS ABOVE LOCKERS IN THE CORRIDOR, VARIES PER FLOOR:
 - PNT - 4 @ LEVEL 1
 - PNT - 5 @ LEVEL 2
 - PNT - 6 @ LEVEL 3
11. CORRIDOR WINDOW MILLWORK SURROUND: ALL PANELS SHALL BE FINISHED IN WOOD VENEER; VNR-1 (REFER TO MATERIALS SCHEDULE & ASSOCIATED ARCHITECTURAL SPECIFICATION); 3 ACCENT PANELS SHALL BE INSTALLED PER LEVEL AS INDICATED:
 - GREEN (PNT-4) LAQUERED PANEL @ L1
 - BLUE (PNT-5) LAQUERED PANEL @ L2
 - ORANGE (PNT-6) LAQUERED PANEL @ L3
12. 1/4" LAMINATED GLASS (BUTT GLAZED) IN HM FRAME (PNT-19), TYP. @ EXTENDED LEARNING.
13. 1" INSULATED GLAZING IN AL. STOREFRONT SYSTEM

CASEWORK LEGEND



BASIS OF DESIGN: ALL CASEWORK MODEL NUMBERS DESIGNATED ON INTERIOR ELEVATIONS ARE FROM CASE SYSTEMS 2014 PRODUCT OFFERING CATALOG.

REFER TO MATERIAL LEGEND FOR FINISH REQUIREMENTS.

REFER TO SPECIFICATIONS FOR ADDITIONAL ACCEPTABLE MANUFACTURERS.

ACOUSTIC WALL PANEL KEY

- # 1 - 1" WOOD FIBER ACOUSTIC WALL PANELS ON 3-5/8" MTL STUD AT 16" OC WITH ACOUSTICAL INSULATION (GYM)
- # 2 - 2" THICK FABRIC WRAPPED ACOUSTIC PANEL CLIP MOUNTED
 - 2A. HUNTER (APF-2)
 - 2B. MOSS (APF-3)
 - 2C. SPRUCE (APF-4)
 - 2D. MIST (APF-5)
- # 3 - 2" THICK FABRIC WRAPPED BUILT-UP PANEL CLIP MOUNTED (1/2" PLYWOOD ON 2X WOOD BLOCKING)
 - 3A. HUNTER (APF-2)
 - 3B. MOSS (APF-3)
- # 4 - FABRIC WRAPPED ACOUSTIC DIFFUSER
 - 4A. HUNTER (APF-2)
 - 4B. MOSS (APF-3)
- # 5 - 1" HEXAGON TECTUM ACOUSTIC PANELS (COMMONS)

Final Plans for Bidding and Construction

PORTAGE PUBLIC SCHOOLS

Portage Public Schools
THE FUTURE LEARNS HERE

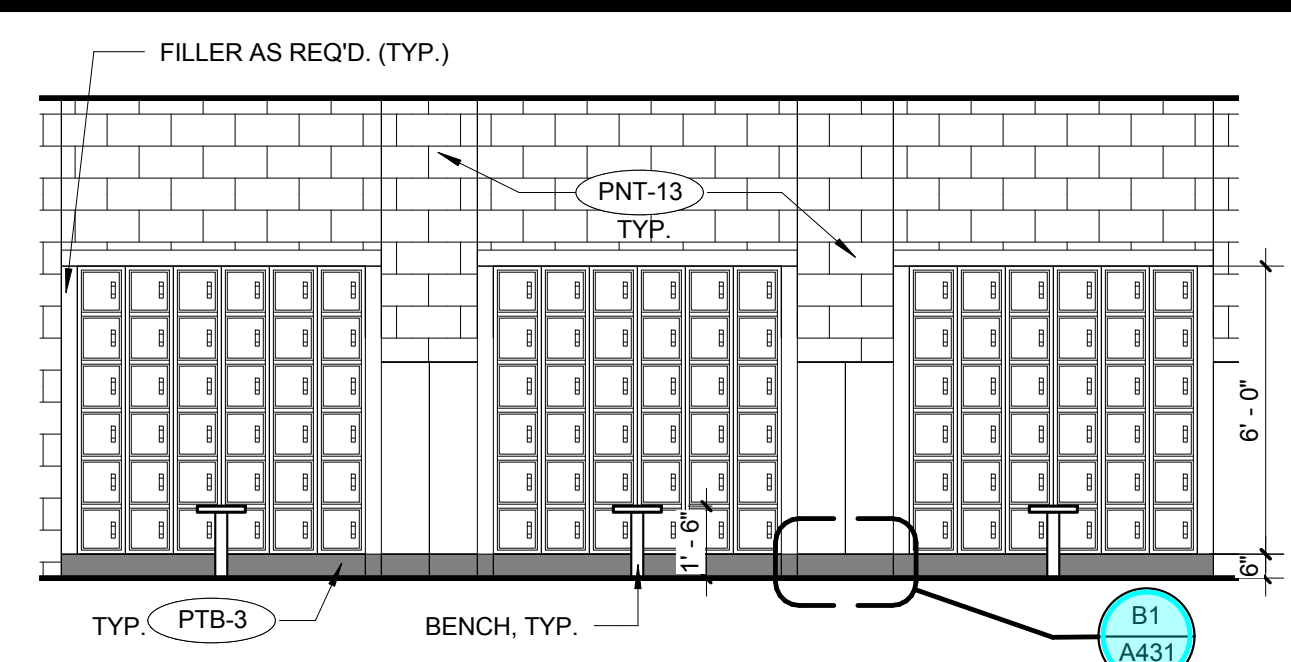
NORTH MIDDLE SCHOOL
PORTAGE, MICHIGAN

DRAWN: Author
CHECKED: Checker
SCALE: As Indicated
UNLESS NOTED OTHERWISE

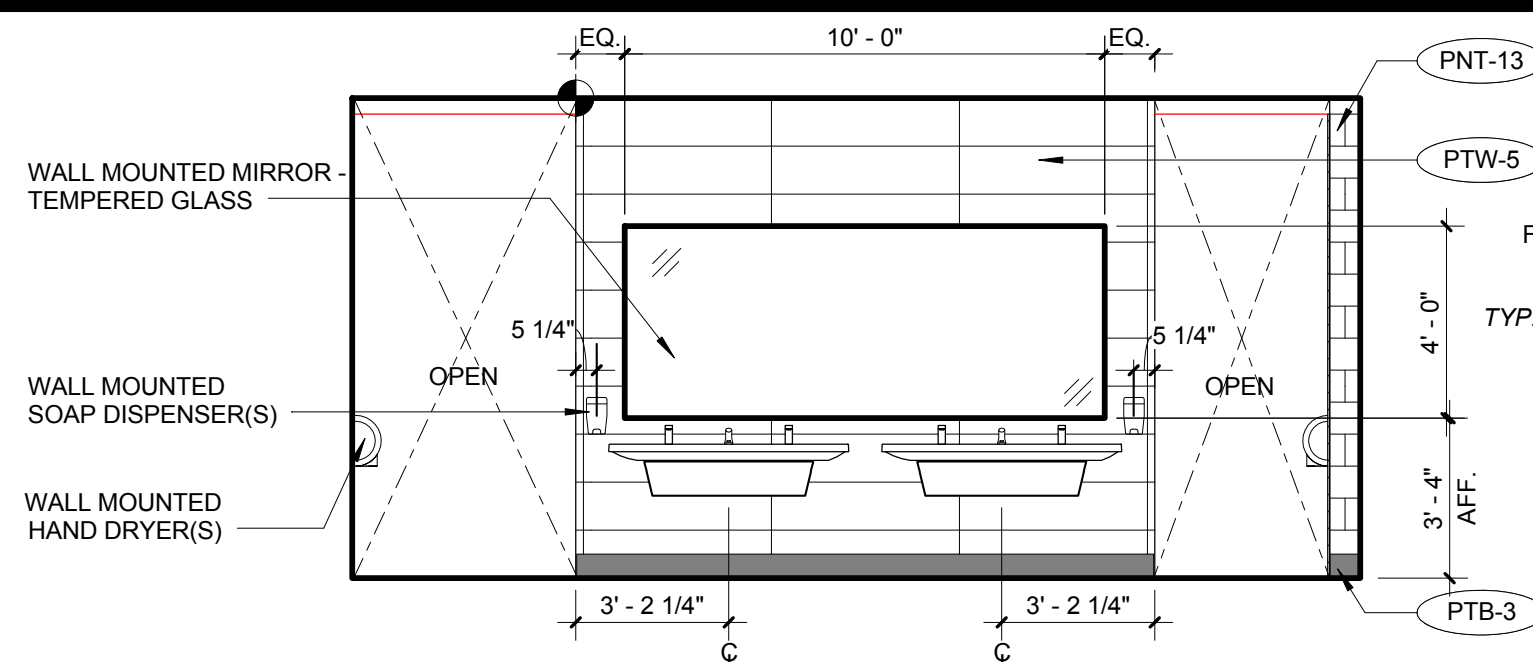
ISSUE:
2017.03.24 CONSTRUCTION

SHEET TITLE:
INTERIOR ELEVATIONS

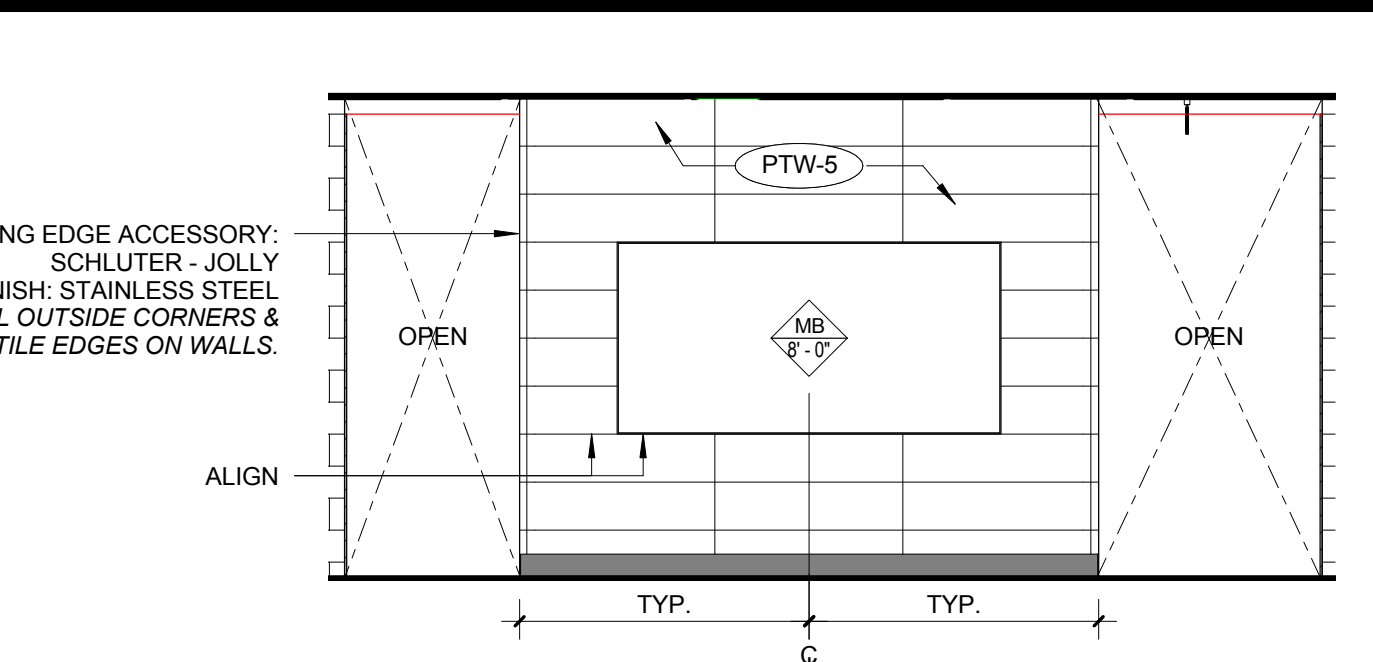
A402
Project #: 214100247



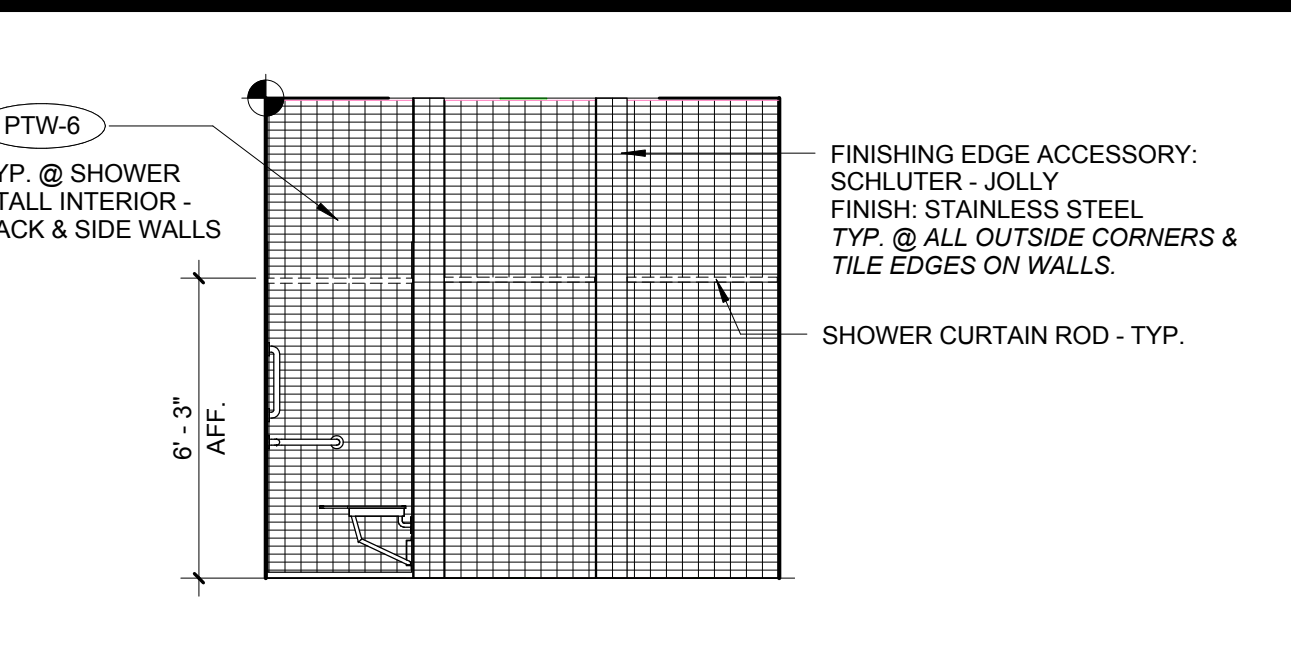
H1 AREA A - TYPICAL LOCKER ROOM ELEVATION
1/4" = 1'-0" REFERENCED ON F3 / A121



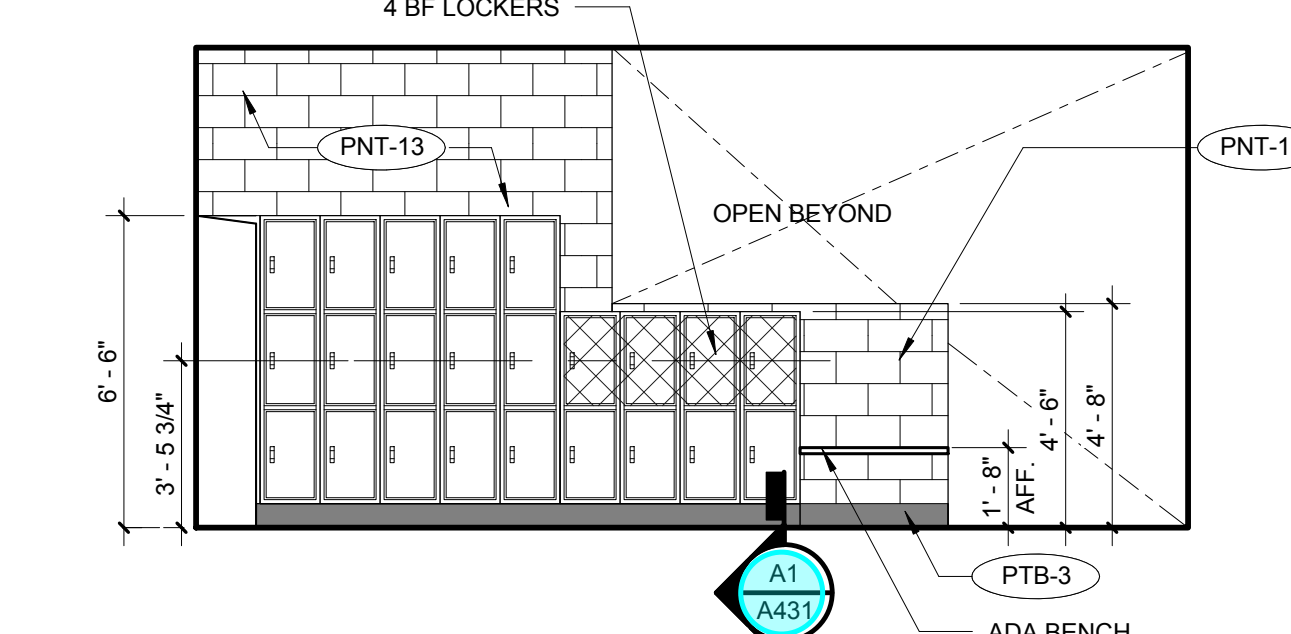
H3 LOCKER RM. SHARED WALL - SINK
1/4" = 1'-0" REFERENCED ON F3 / A121



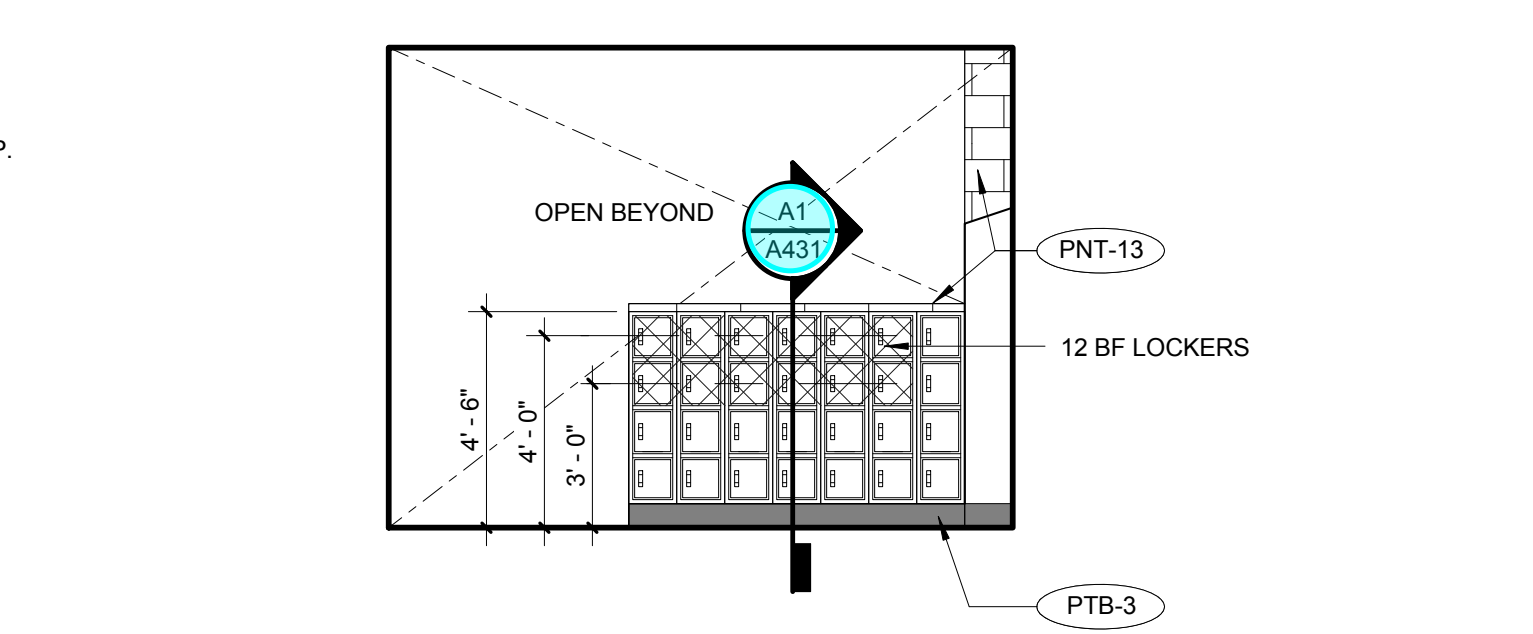
H4 LOCKER RM. SHARED WALL
1/4" = 1'-0" REFERENCED ON F3 / A121



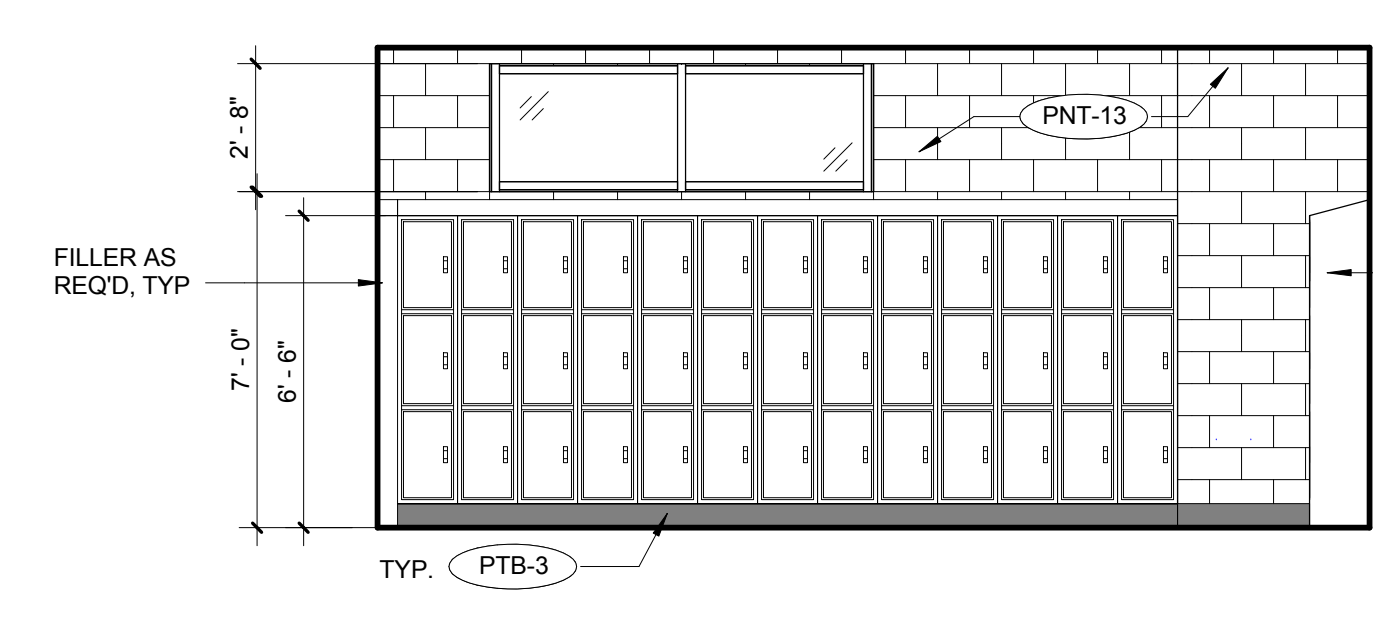
H6 LOCKER RM SHOWER
1/4" = 1'-0" REFERENCED ON F3 / A121



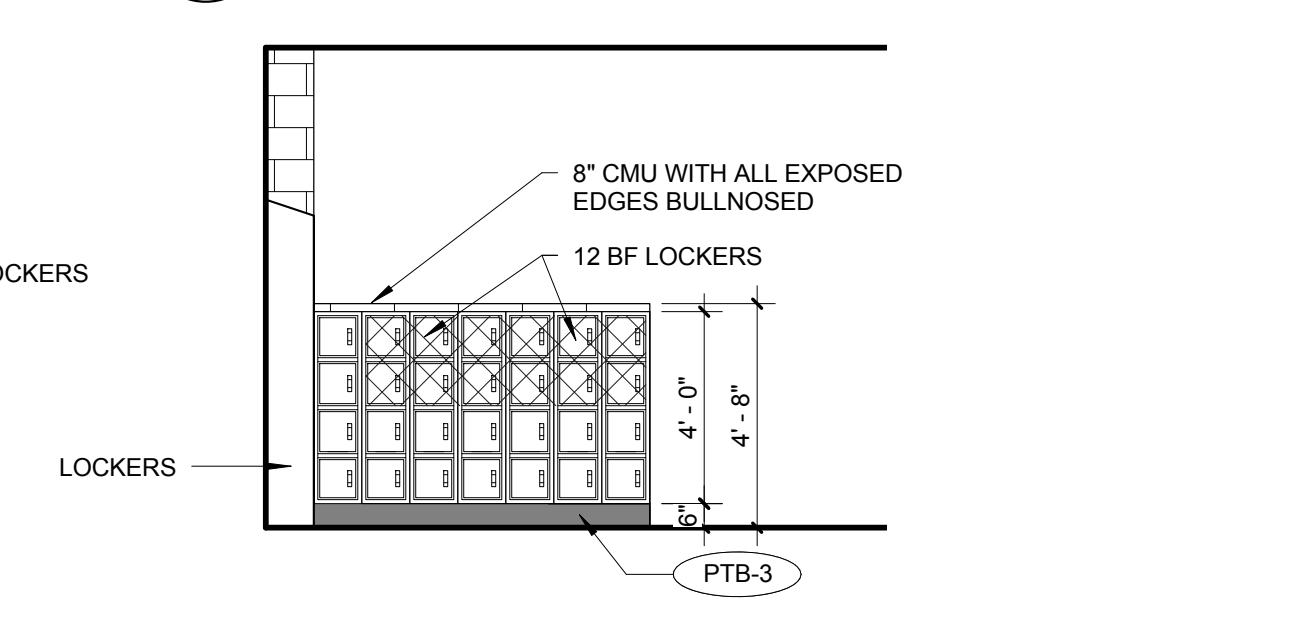
G2 AREA A - TOILET ROOM A144 - WEST - BF LOCKERS
1/4" = 1'-0" REFERENCED ON F3 / A121



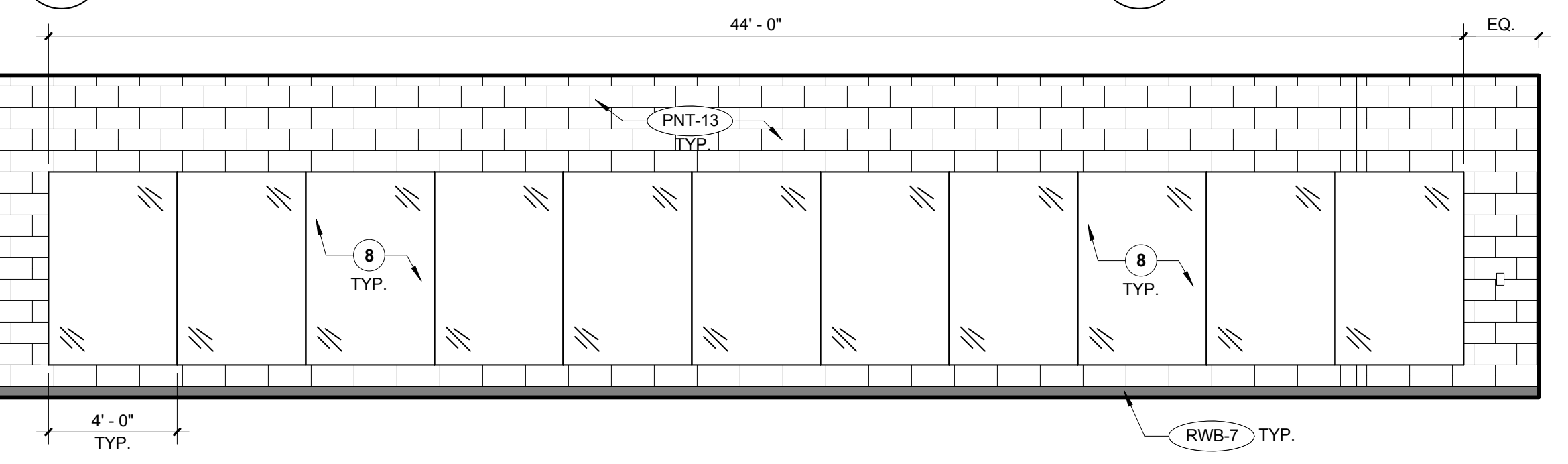
G3 TOILET ROOM A144 - EAST SMALL BF LOCKERS
1/4" = 1'-0" REFERENCED ON F3 / A121



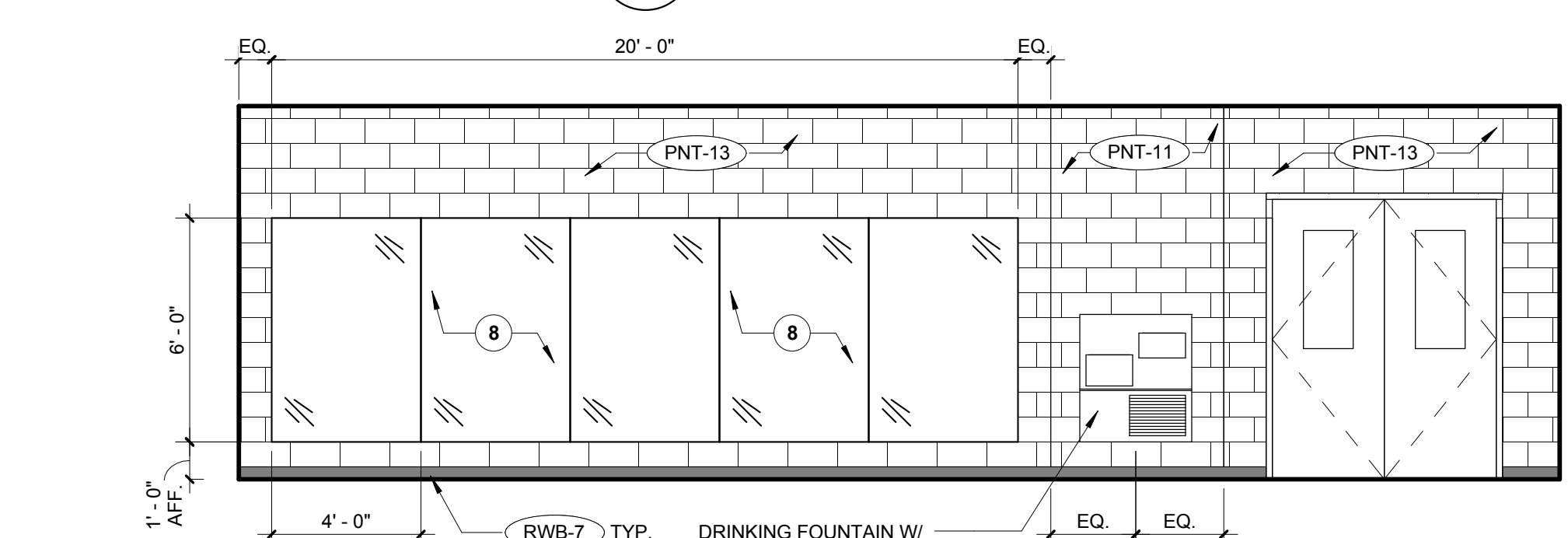
G4 AREA A - TOILET ROOM A144 - EAST - BF LOCKERS
1/4" = 1'-0" REFERENCED ON F3 / A121



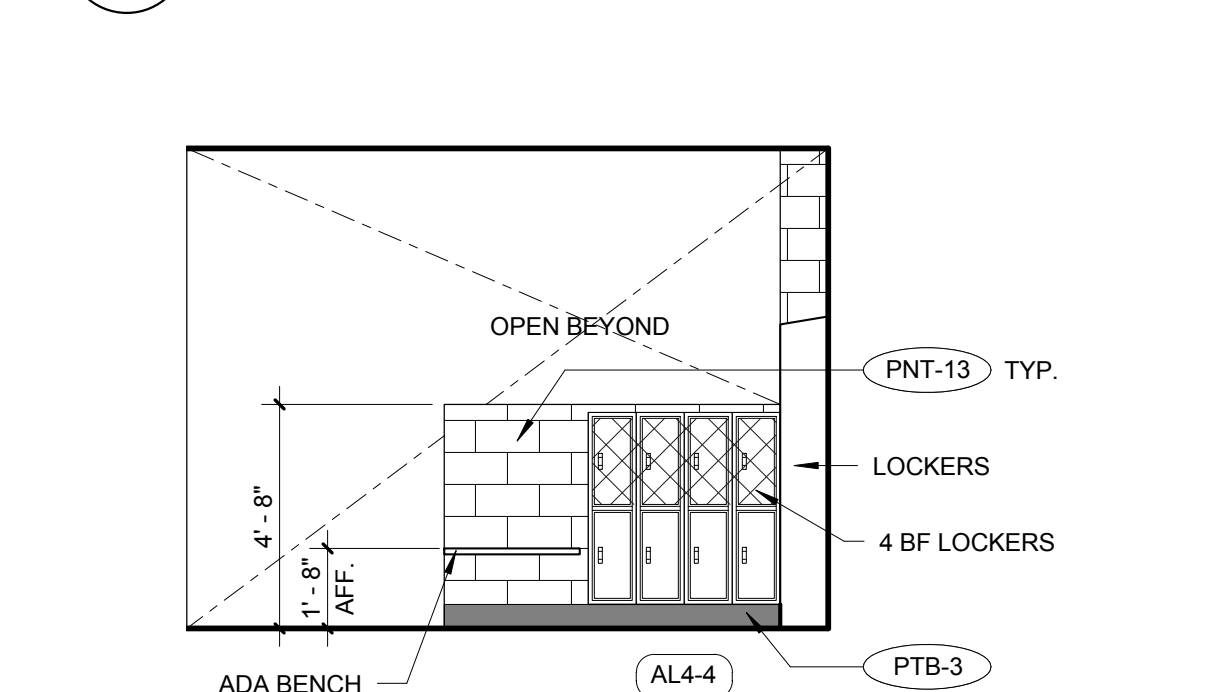
G6 TOILET RM. A137 - SMALL LOCKERS
1/4" = 1'-0" REFERENCED ON F3 / A121



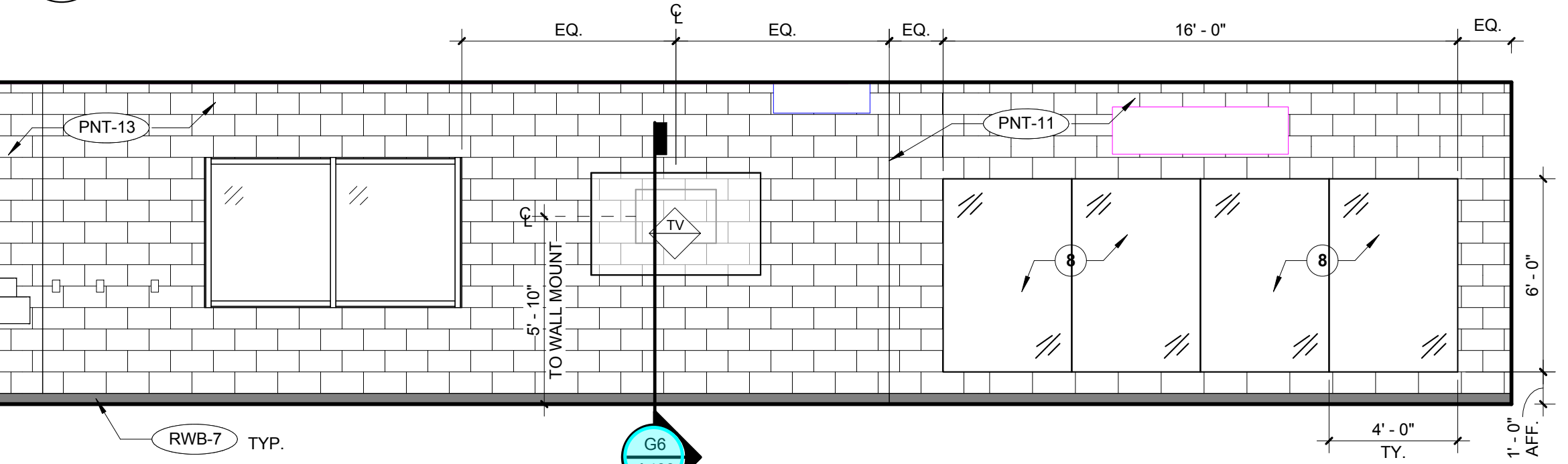
E1 A123 SOUTH
1/4" = 1'-0" REFERENCED ON A4 / A111A



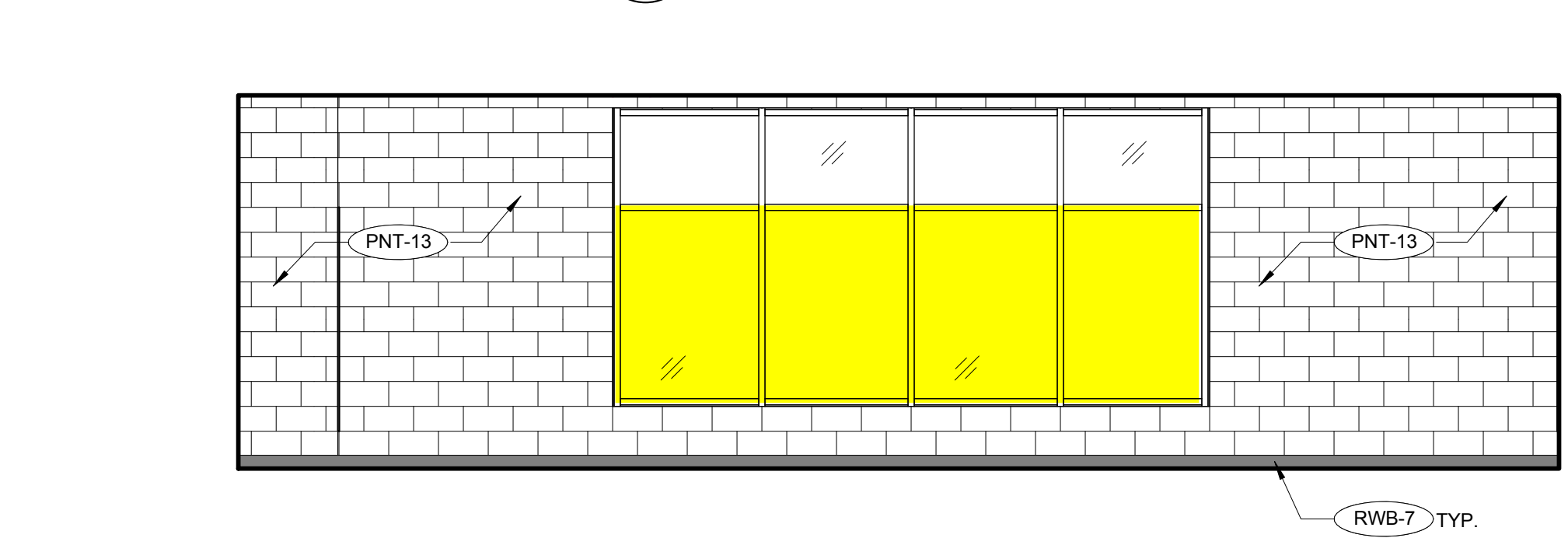
E4 A123 WEST
1/4" = 1'-0" REFERENCED ON A4 / A111A



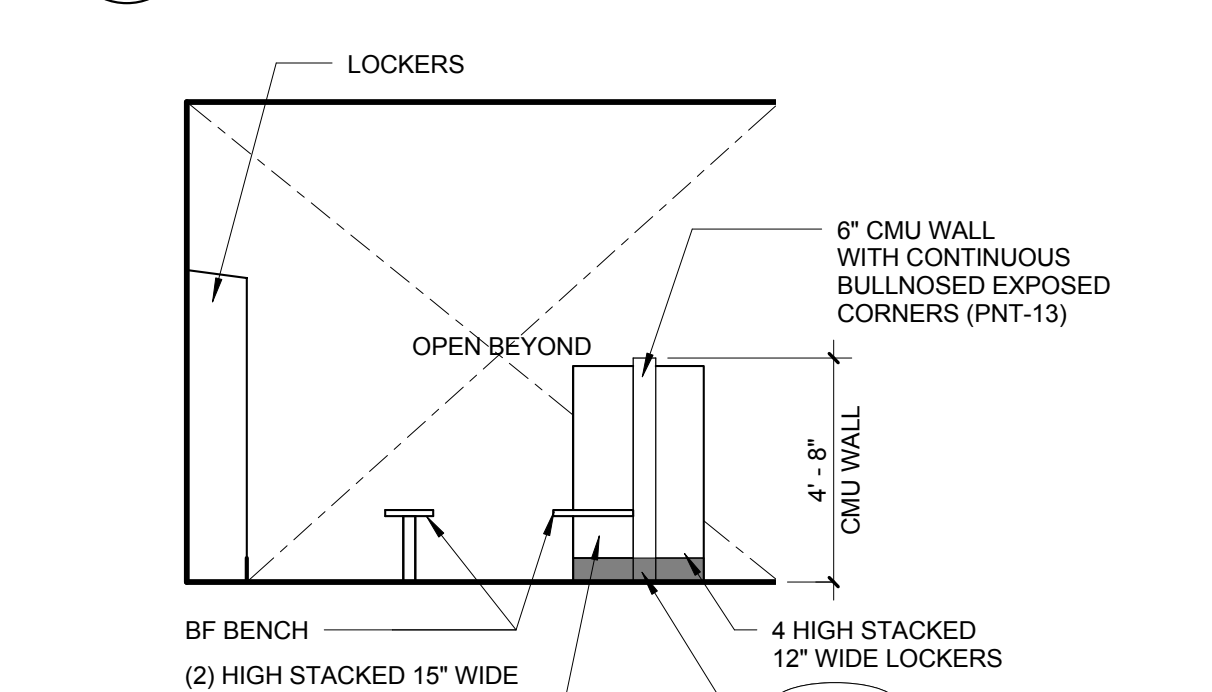
E6 TOILET ROOM A137 - BF LOCKERS
1/4" = 1'-0" REFERENCED ON F3 / A121



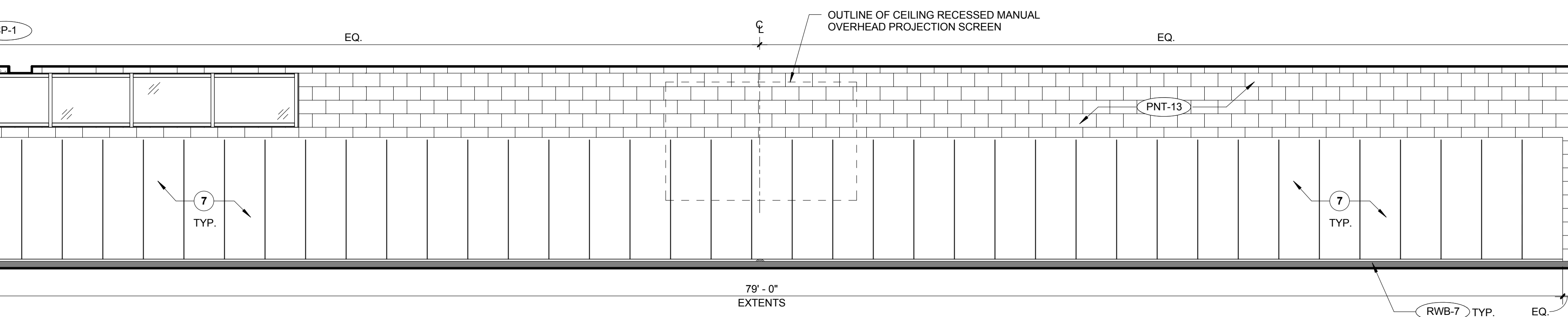
D1 A123 NORTH
1/4" = 1'-0" REFERENCED ON A4 / A111A



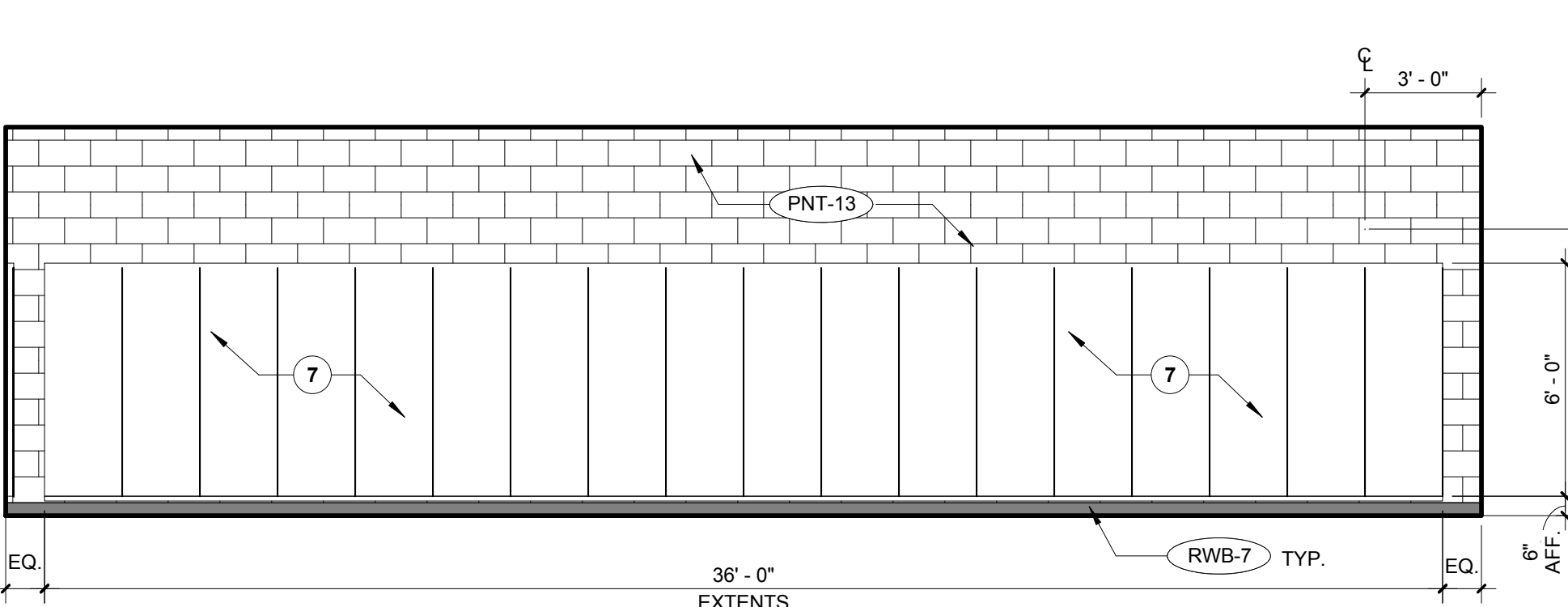
D4 A123 EAST
1/4" = 1'-0" REFERENCED ON A4 / A111A



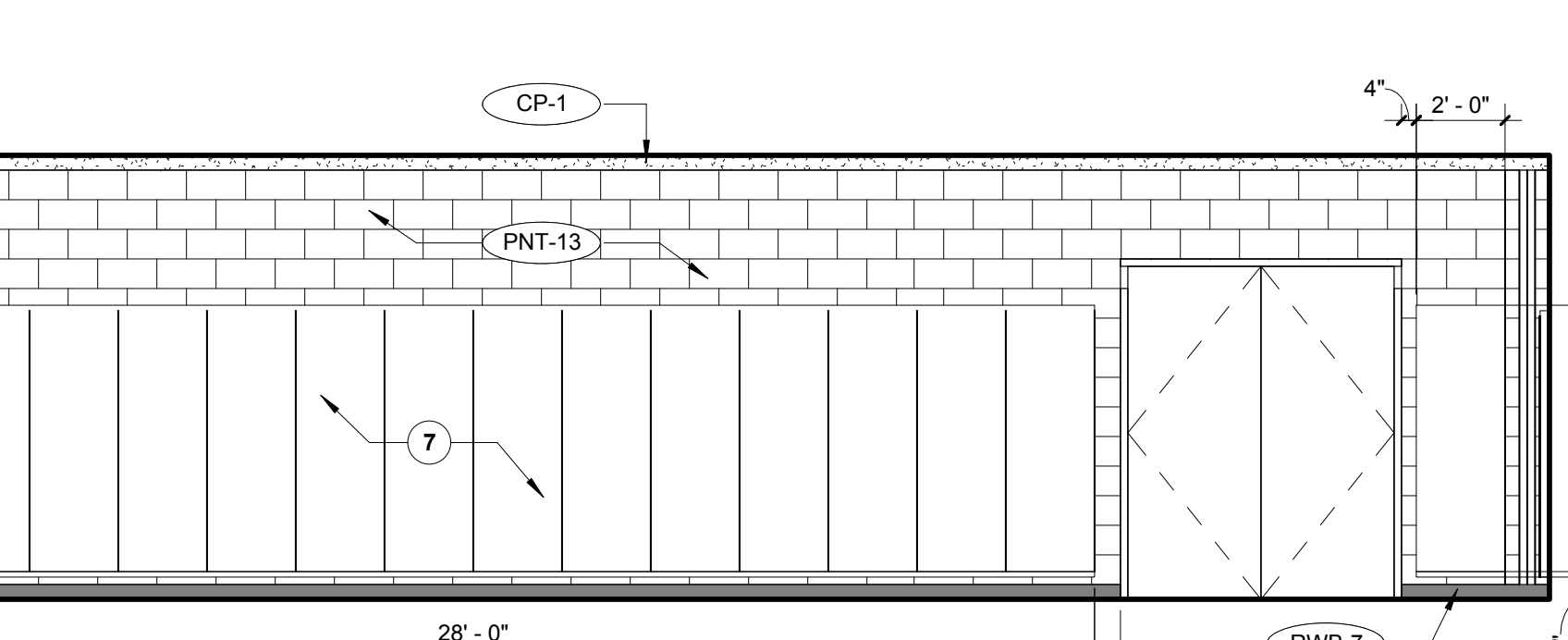
D6 TOILET ROOM 144 - BF BENCH
1/4" = 1'-0" REFERENCED ON F3 / A121



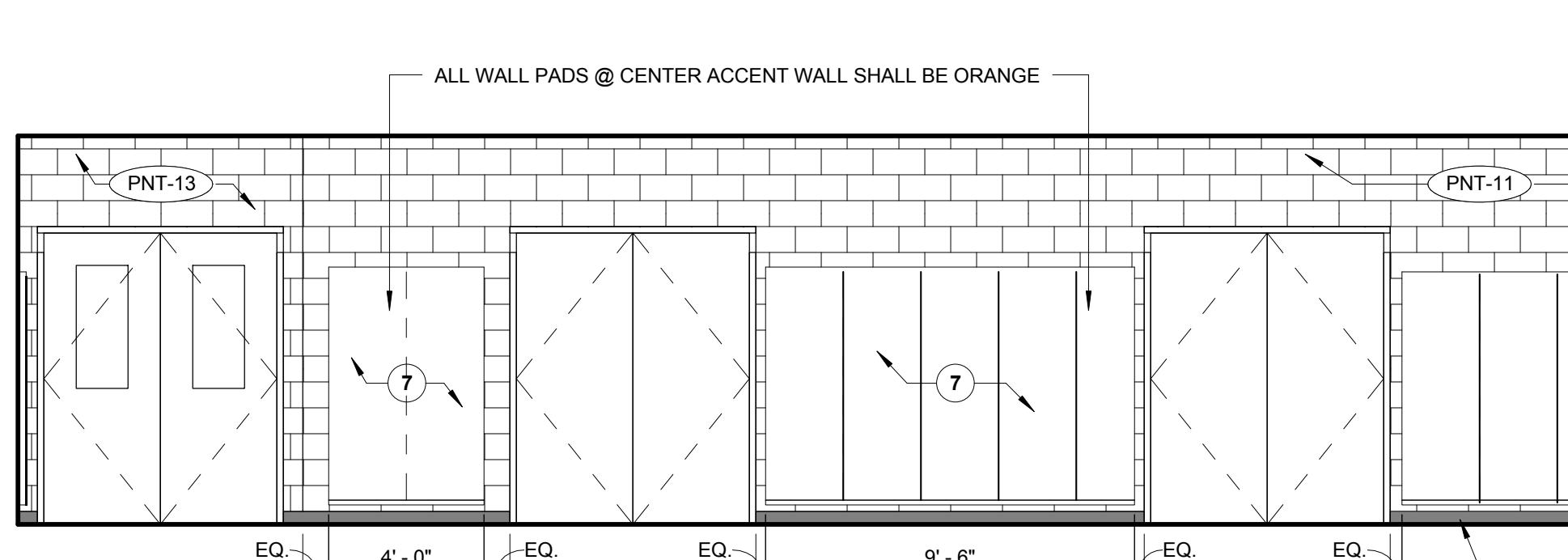
B1 A149 WEST
1/4" = 1'-0" REFERENCED ON A4 / A111A



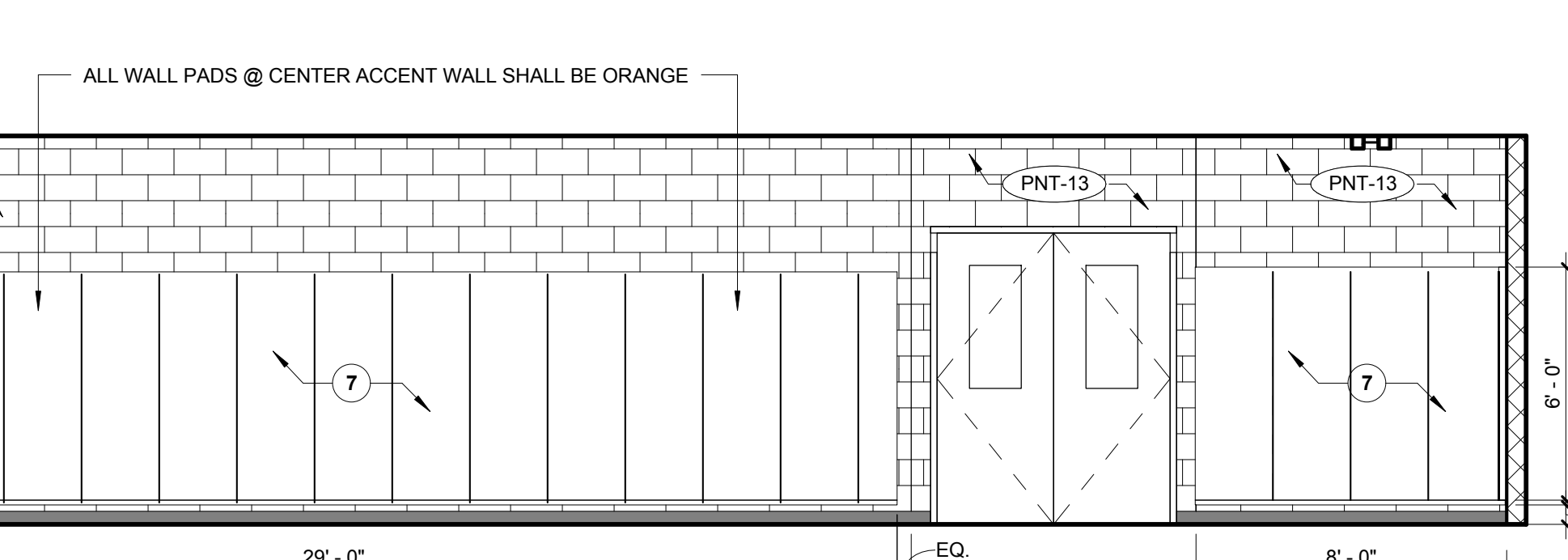
B6 A149 NORTH
1/4" = 1'-0" REFERENCED ON A4 / A111A



A1 A149 SOUTH
1/4" = 1'-0" REFERENCED ON A4 / A111A



A6 A149 EAST
1/4" = 1'-0" REFERENCED ON A4 / A111A



A6 A149 EAST
1/4" = 1'-0" REFERENCED ON A4 / A111A

3/24/2017 9:01:26 AM C:\Users\Public\Documents\Local_Revit_Files\2016_Architecture_FPS_NORTH_M2 2016 06 06_sgrass.nt