

NO	DATE	REVISION	DR.	CHK.

St. John Engineering, LLC
 ENGINEERING • PLANNING •
 ENVIRONMENTAL CONSULTING

623 JACKSON STREET
 MANCHESTER, TN 37404
 PHONE: (615) 726-2638 • FAX: (615) 726-6357
 WWW.STJOHNENGINEERING.COM

SITE LAYOUT & GRADING PLAN

WESTWOOD BASKETBALL COURT

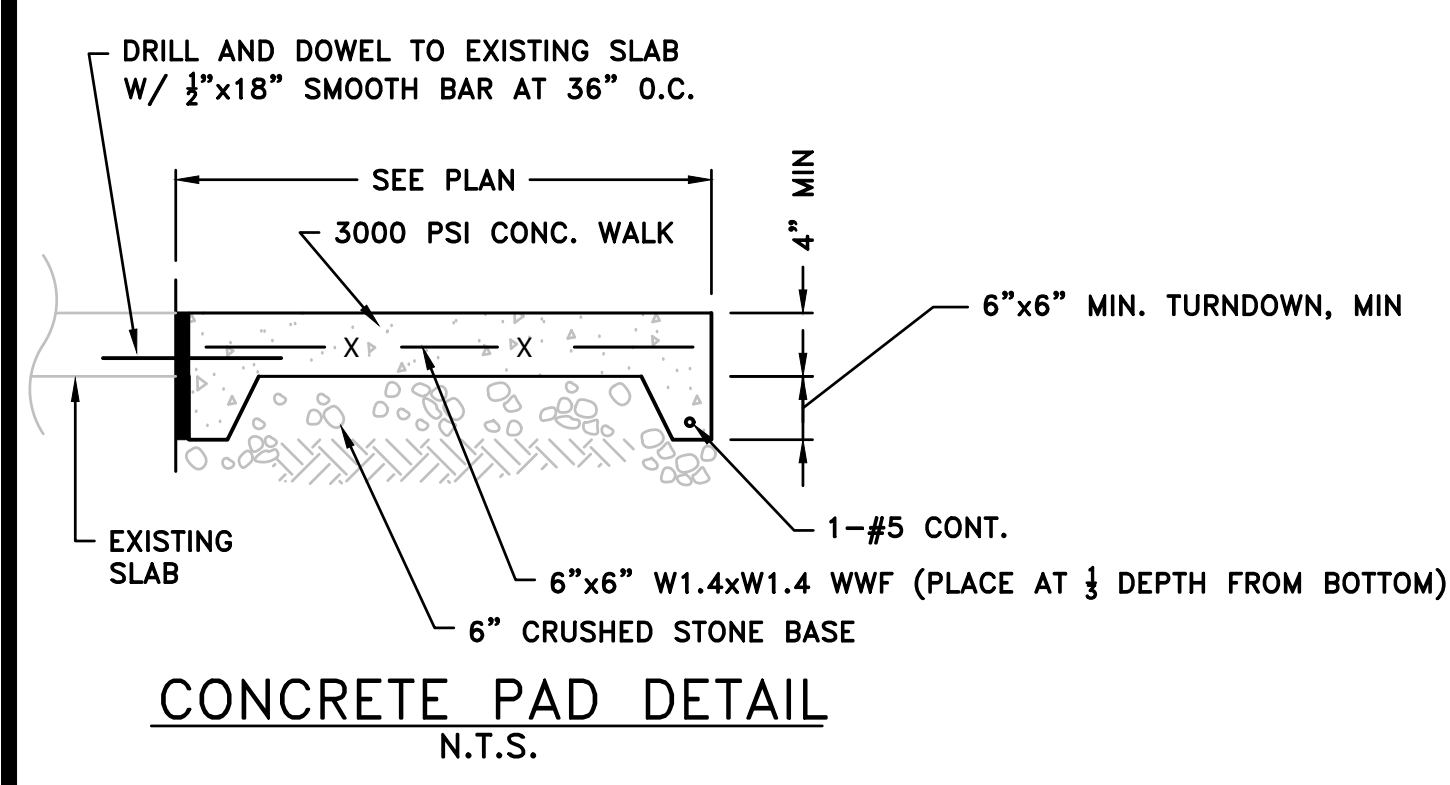
MANCHESTER, TN 2021

SCOTT C. ST. JOHN
 REGISTERED ENGINEER
 CIVIL
 STATE OF TENNESSEE
 03/21

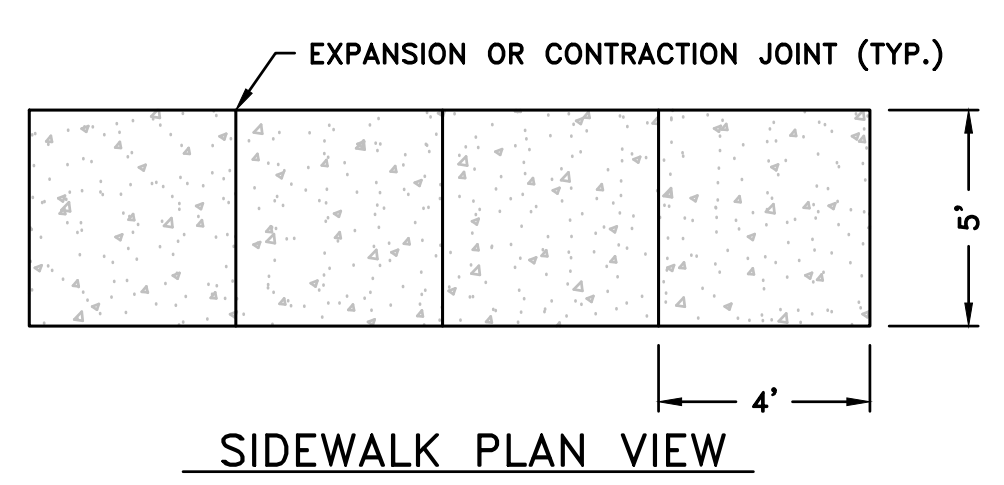
JOB 102-174

SHEET **C1.1**

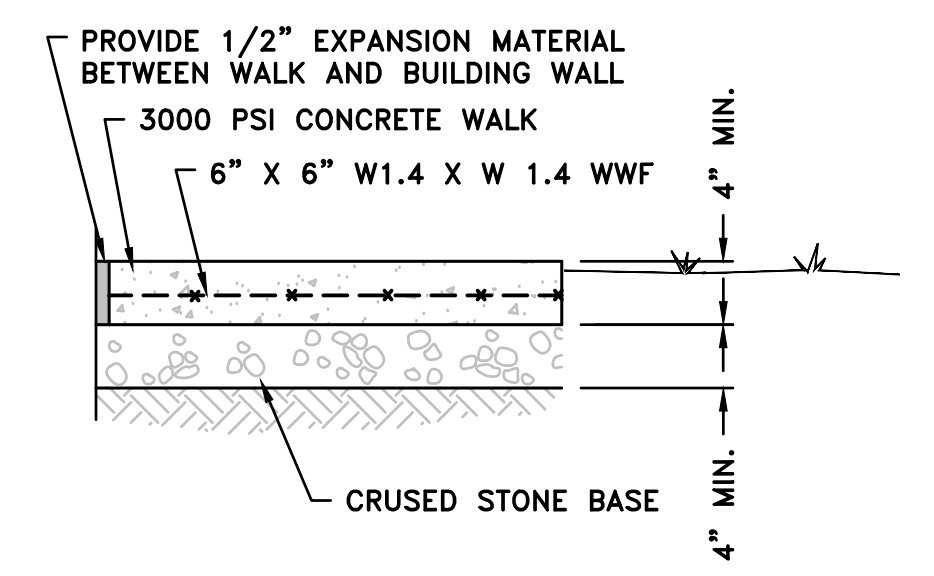
OF SHEETS



CONCRETE PAD DETAIL
N.T.S.

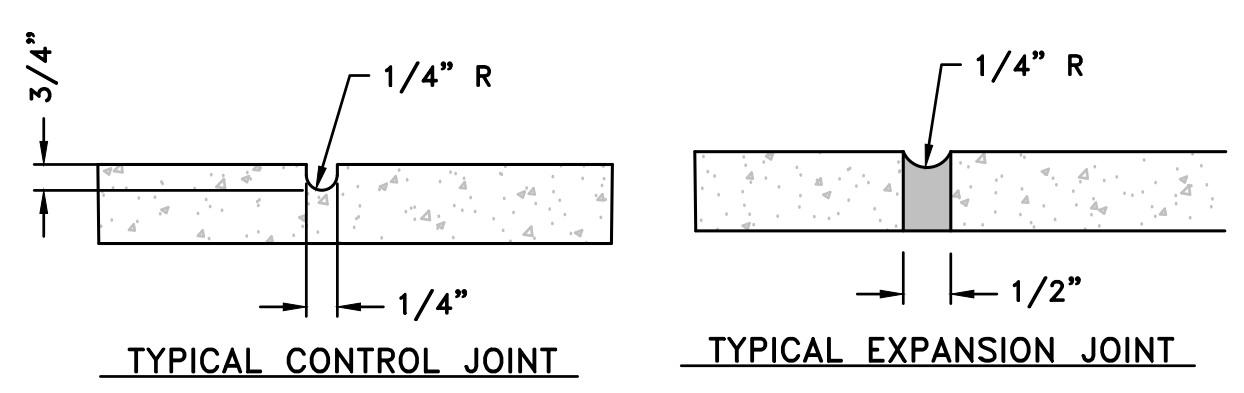


SIDEWALK PLAN VIEW



SIDEWALK SECTION VIEW

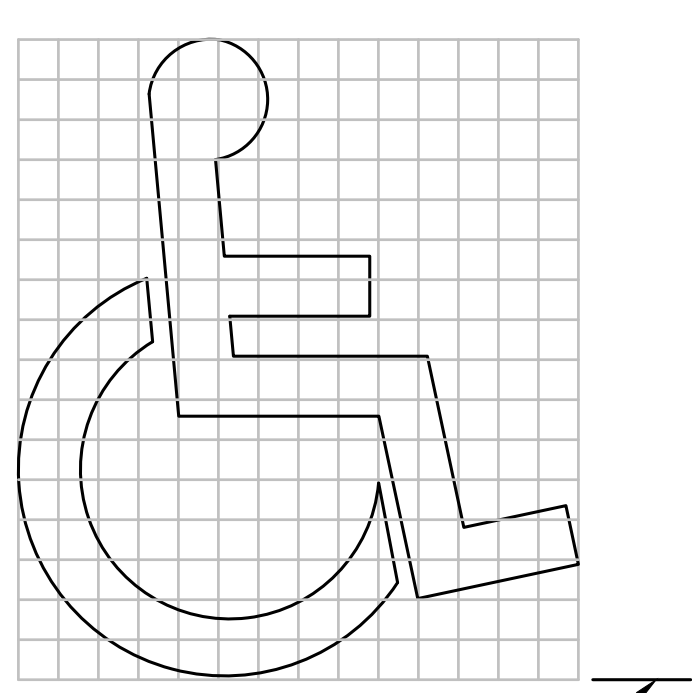
CONCRETE SIDEWALK
N.T.S.



NOTE: EXPANSION JOINTS TO BE SPACED A MAX. OF 30' APART OR AS DIRECTED BY THE ENGINEER TO MEET SPACING OF MARKINGS. CONTRACTION JOINTS TO BE EQUALLY SPACED AT 4' MAXIMUM CENTERS BETWEEN EXPANSION JOINTS.

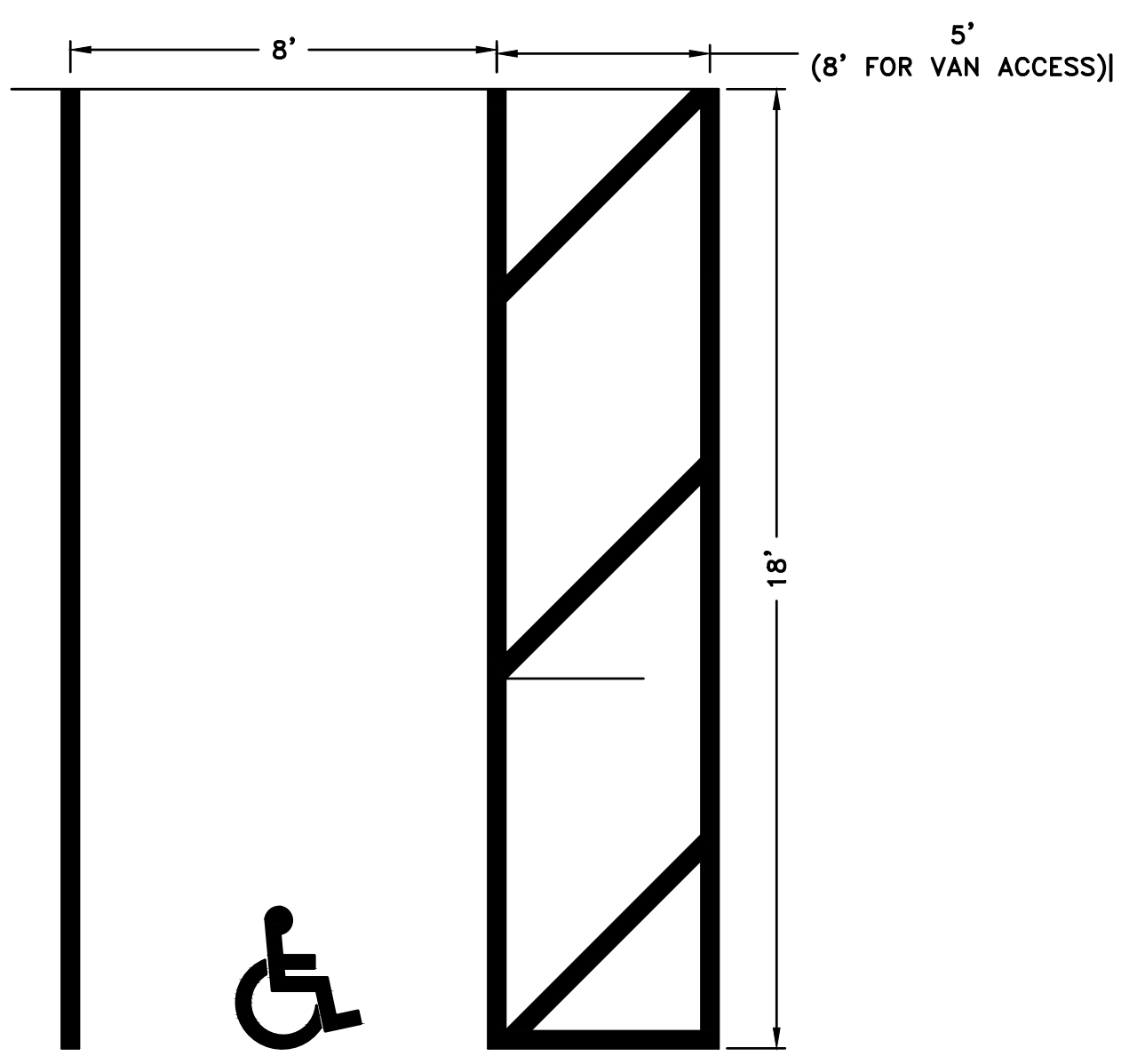
CONCRETE SIDEWALK JOINTS
N.T.S.

GRID SHOWN FOR LAYOUT REFERENCE ONLY. GRID BLOCK ARE 2" X 2".



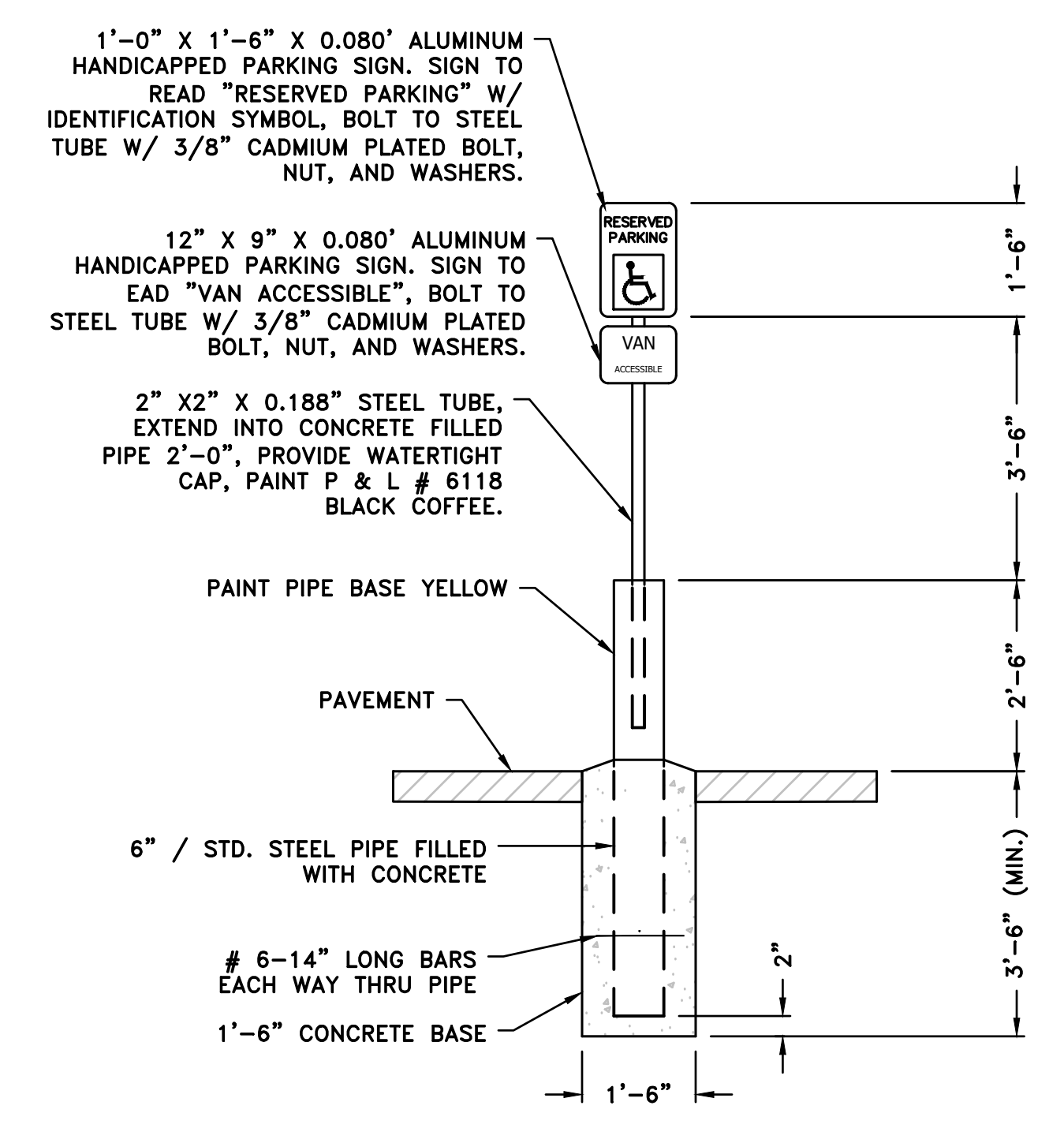
LINE UP WITH END OF PARKING STALL

HANDICAP DESIGNATION AT HANDICAP PARKING SPACE



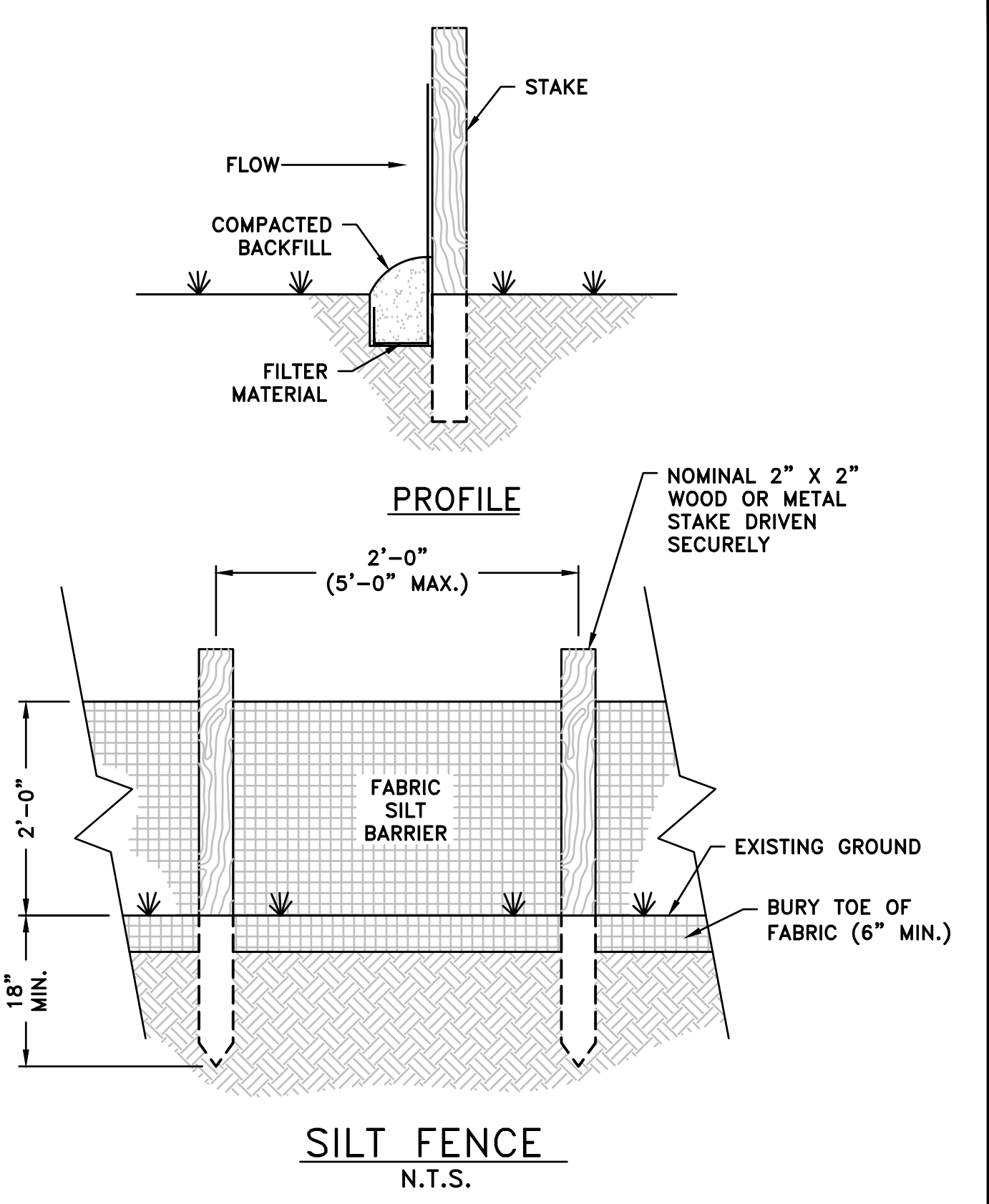
HANDICAP PARKING STALL LAYOUT

HANDICAP PARKING
N.T.S.



NOTE: HANDICAPPED PARKING SIGN SHALL CONFORM WITH CURRENT STATE AND LOCAL CODES AND REGULATIONS.

HANDICAPPED PARKING SIGN
N.T.S.



SILT FENCE
N.T.S.

GENERAL NOTES:

1. THE CONTRACTOR SHALL VERIFY LOCATIONS OF ALL EXISTING UTILITIES (INCLUDING STORM DRAINAGE PIPES OR STRUCTURES) BEFORE COMMENCEMENT OF CONSTRUCTION.
2. IN EASEMENTS, CONTRACTOR SHALL PROTECT AND RESTORE SAID PROPERTY TO A CONDITION SIMILAR TO THAT EXISTING AT THE COMMENCEMENT OF CONSTRUCTION EXCEPT AS NOTED.
3. SURPLUS MATERIAL NOT REQUIRED FOR SITE CONSTRUCTION SHALL BE DISPOSED OF BY THE CONTRACTOR.
4. THE CONTRACTOR SHALL COMPLY WITH ALL PERTINENT PROVISIONS OF THE "MANUAL OF ACCIDENT PREVENTION IN CONSTRUCTION" ISSUED BY AGC OF AMERICA, INC., AND THE "SAFETY AND HEALTH REGULATIONS FOR CONSTRUCTION" ISSUED BY THE U.S. DEPARTMENT OF LABOR.
5. THE CONTRACTOR SHALL COORDINATE WORK WITH OTHER WORK IN PROGRESS.
6. FILL MATERIAL REQUIRED, IF ANY, SHALL BE BORROWED AT THE CONTRACTOR'S EXPENSE.
7. CONTRACTOR SHALL GIVE ALL NECESSARY NOTICES AND OBTAIN ALL PERMITS.
8. ALL PIPE UNDER EXISTING AND OR PAVED AREAS SHALL BE BACKFILLED TO TOP OF SUBGRADE WITH CRUSHED STONE.
9. CONTRACTOR IS RESPONSIBLE FOR ALL HORIZONTAL AND VERTICAL BENDS, JOINTS, AND FITTINGS TO CONSTRUCT UTILITIES.
10. ANY DAMAGE TO EXISTING ASPHALT SURFACE RESULTING FROM NEW CONSTRUCTION SHALL BE REPLACED BY LIKE MATERIAL AT THE CONTRACTOR'S EXPENSE.
11. IN THE EVENT OF ANY DISCREPANCIES AND/OR ERRORS FOUND IN THE DRAWING, OR IF PROBLEMS ARE ENCOUNTERED DURING CONSTRUCTION, THE CONTRACTOR SHALL BE REQUIRED TO NOTIFY THE ENGINEER BEFORE PROCEEDING WITH THE WORK. IF ENGINEER IS NOT NOTIFIED, THE CONTRACTOR SHALL TAKE RESPONSIBILITY FOR THE COST OF ANY REVISION.
12. TRAFFIC CONTROL SHALL BE THE RESPONSIBILITY OF THE CONTRACTOR. ALL TRAFFIC CONTROL DEVICES AND PLANS SHALL CONFORM TO THE MANUAL OF UNIFORM TRAFFIC CONTROL DEVICES (LATEST EDITION).

NO	DATE	REVISION	DR.	CHK.

St. John ENGINEERING, LLC
ENGINEERING • PLANNING • ENVIRONMENTAL CONSULTING
623 JACKSON STREET
MANCHESTER, TN 37325
PHONE: (615) 726-2384 FAX: (615) 718-6357
WWW.STJOHNENGINEERING.COM

DETAILS
WESTWOOD BASKETBALL COURT
MANCHESTER, TN 2021

