



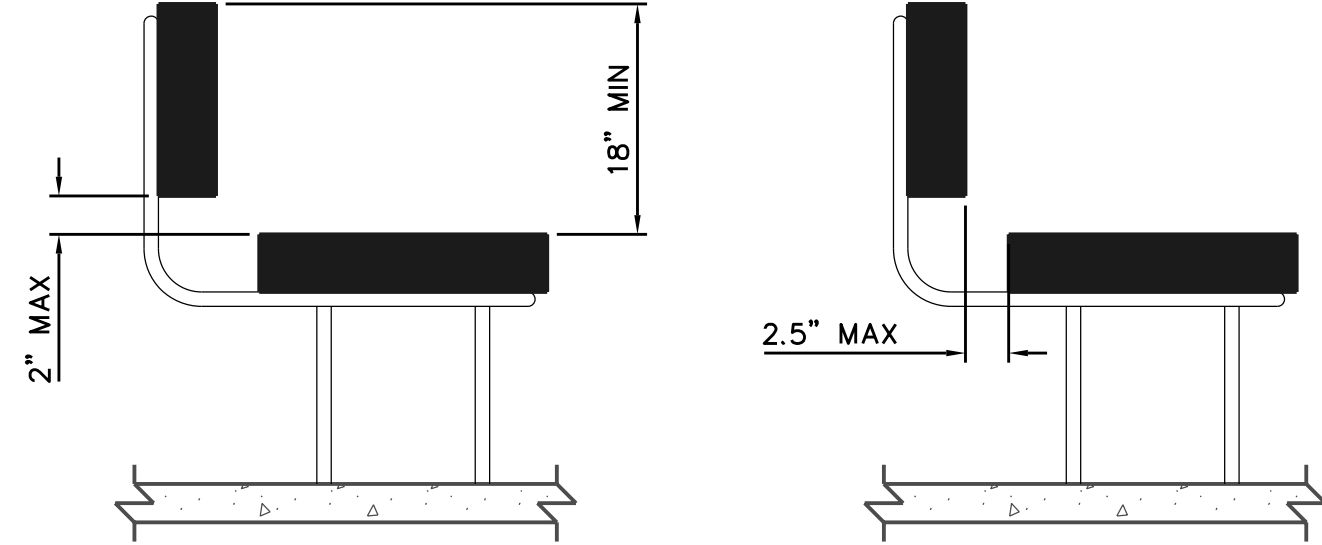
HANDICAP BENCH SECTION DETAIL

N.T.S.

15

NOTES:

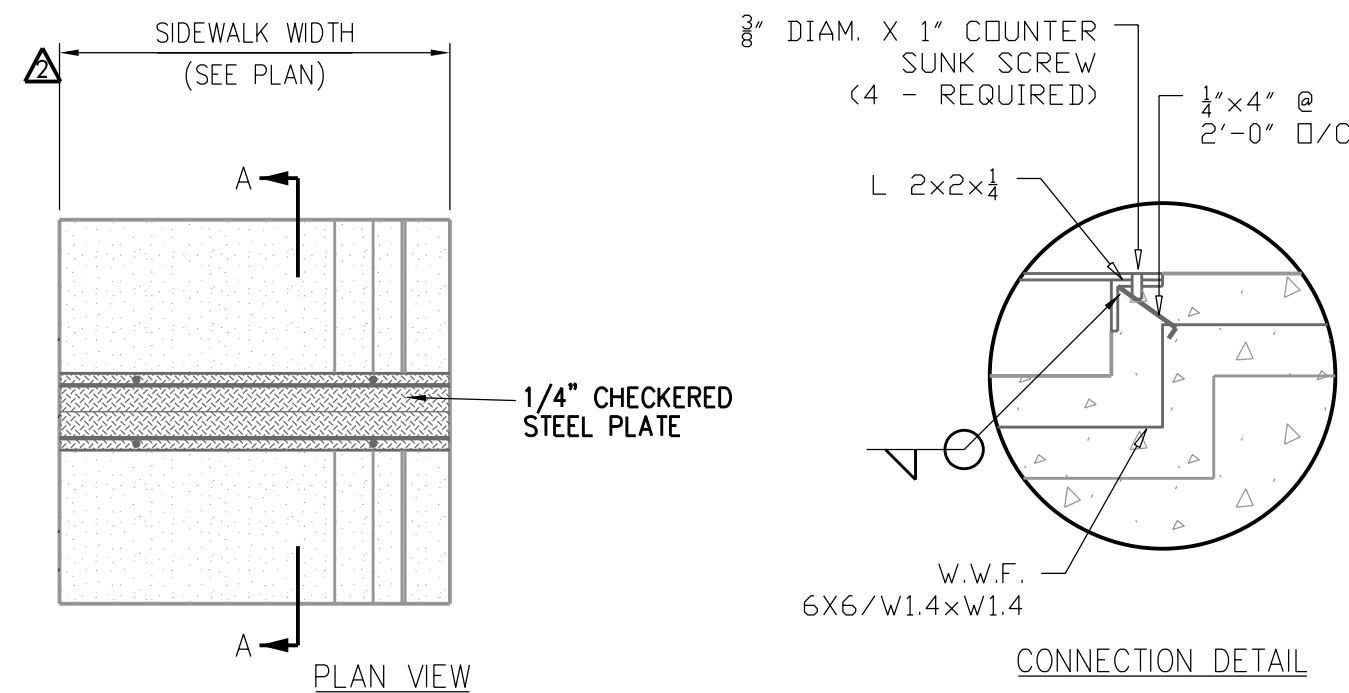
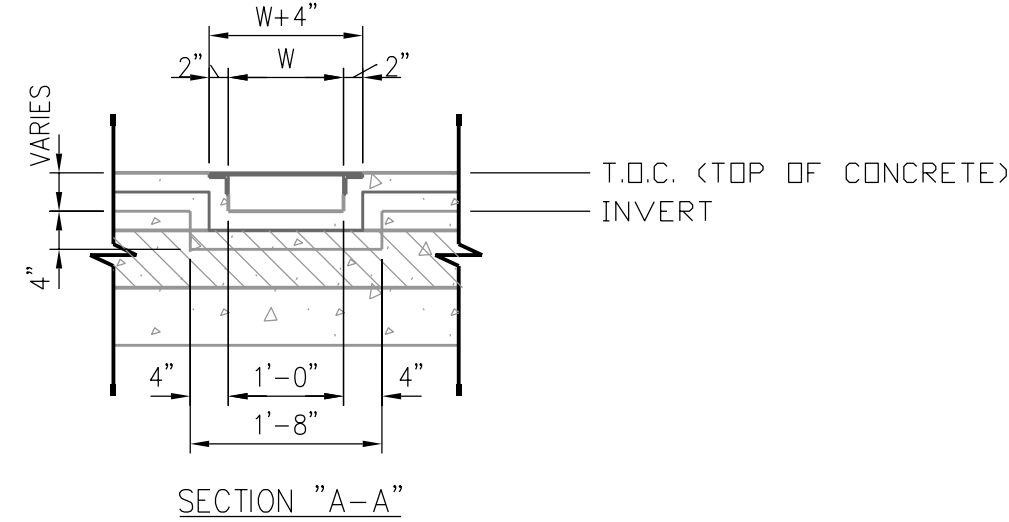
1. BENCHES SHALL HAVE SEATS THAT ARE 42 INCHES LONG MINIMUM AND 20 INCHES DEEP MINIMUM AND 24 INCHES DEEP MAXIMUM
2. BACK SUPPORT SHALL BE 42 INCHES LONG MINIMUM.
3. TOP OF BENCH SEAT SURFACE SHALL BE 17 INCHES MINIMUM AND 19 INCHES MAXIMUM ABOVE THE FINISHED FLOOR OR GROUND.
4. BENCHES SHALL HAVE MINIMUM SEPERATION OF 36 INCHES.



SIDEWALK DRAIN DETAIL

N.T.S.

15



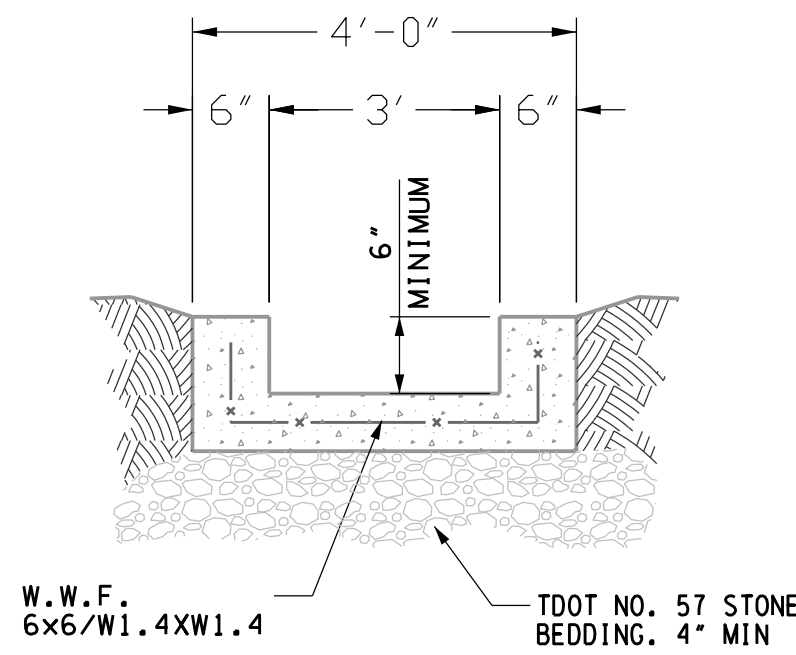
CONCRETE FLUME DETAIL

N.T.S.

15

NOTES:

1. EXPANSION JOINTS: 1/2" WIDE, FULL DEPTH, AT MAXIMUM OF 30' LONGITUDINAL INTERVALS, AT ALL ABUTTING STRUCTURES, DRIVEWAYS AND TANGENT POINTS OF RADIUS RETURNS.
2. TOOLED CURB CONTROL JOINTS: 1/2" WIDE, 1" DEEP, SPACING TO APPROXIMATE SIDEWALK WIDTH.
3. ALL CONCRETE TO COMPLY WITH ACI 318 WITH A MINIMUM COMPRESSIVE STRENGTH OF 4,000 PSI @ 28 DAYS.
4. CONCRETE TO BE AIR-ENTRAINED WITH AN AIR CONTENT OF 4-6%.
5. JOINTS TO BE FILLED WITH BITUMINOUS EXPANSION MATERIAL.



CIVIL SITE DETAILS

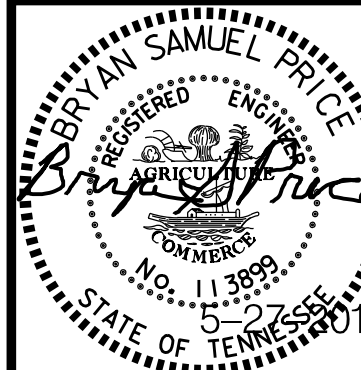
PEAY PARK SPLASH PAD
CITY OF GOODLETTSVILLE
DAVIDSON COUNTY, TENNESSEE

SHEET NO.

C5.2

JOB NO.

0301-02



DATE:	JANUARY 2019
DRAWN BY:	PRICE
CHECKED BY:	PRICE
APPROVED BY:	PRICE

REVISIONS	DATE
REVISED AFTER BID	01-13-2019
OUTFALL LOCATION	02-20-2019
TDEC REV 2	03-05-2019
OWNER COMMENTS	05-31-2019

BPE

BRYAN PRICE ENGINEERING

865 COKER FORD ROAD

PORTLAND, TENNESSEE 37148

PHONE: 615-481-3176

EMAIL: BRYAN.PRICE@PEACAN.COM