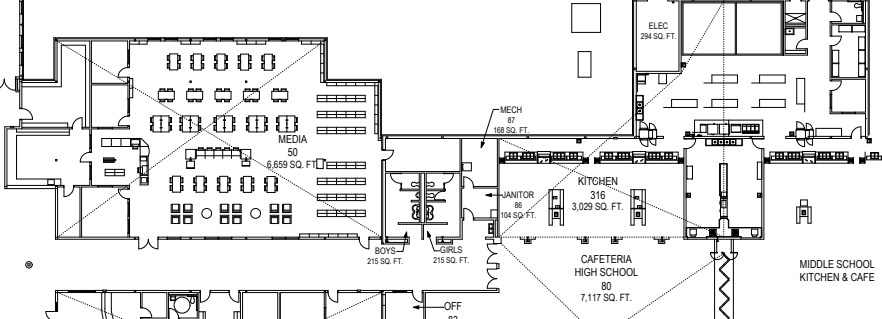
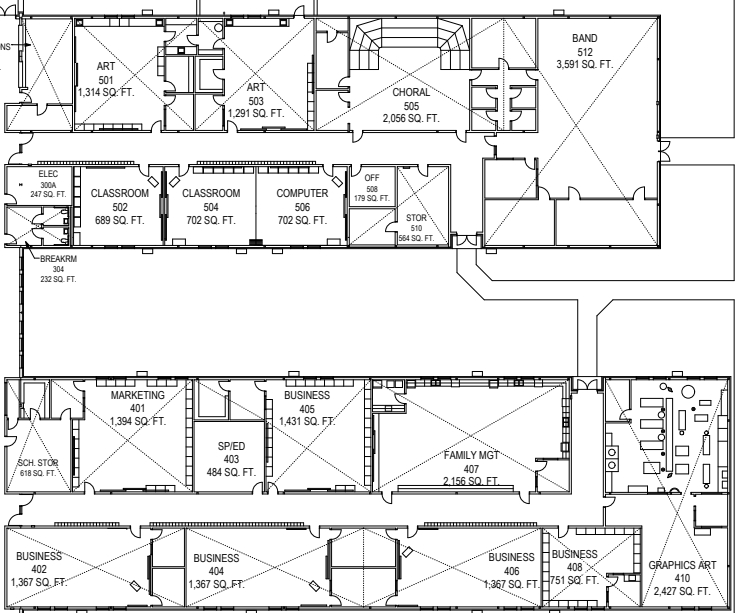
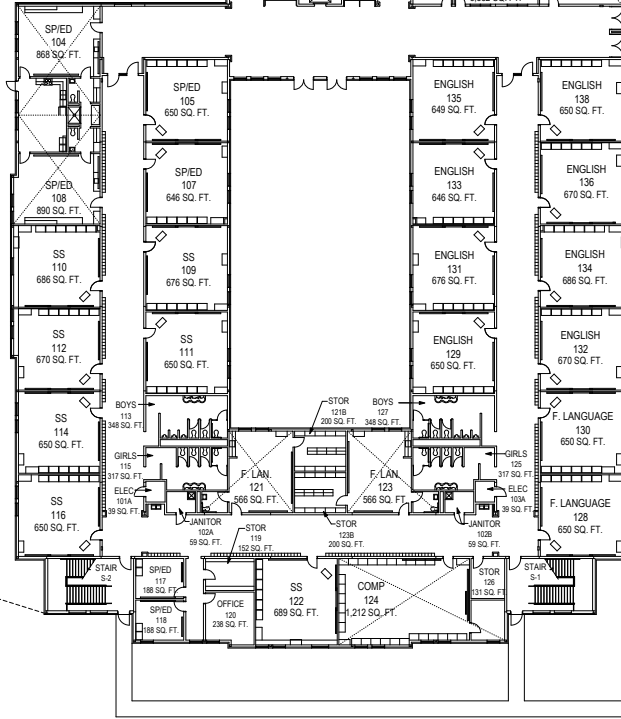
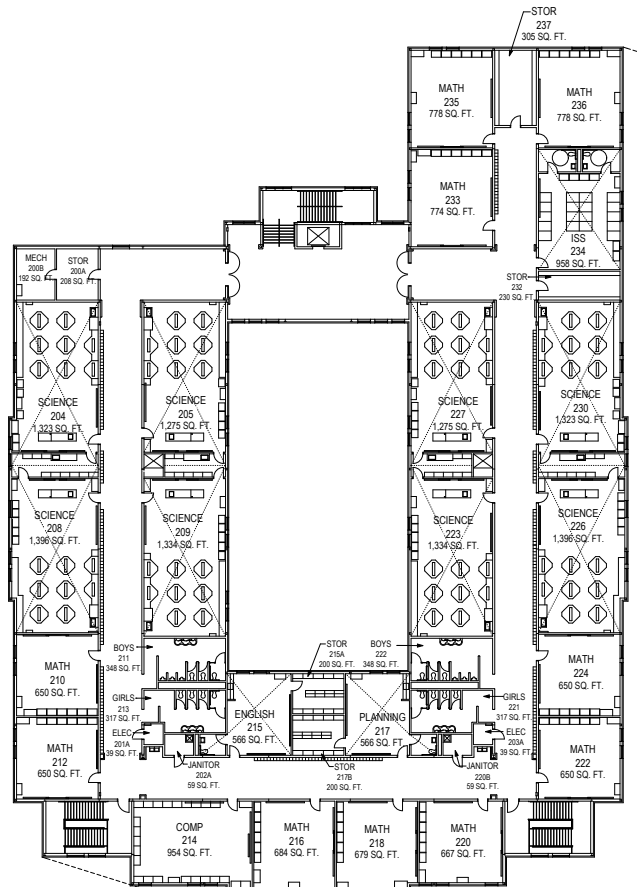
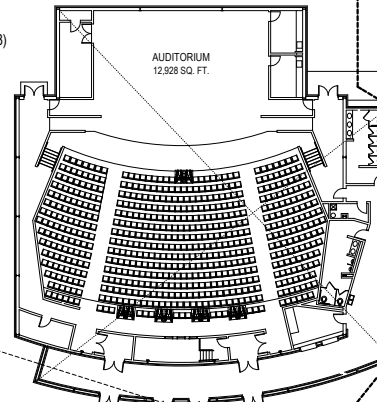


B5020 (2008)  
12,928 SF



B5010 (2007)  
165,099 SF

**BIBB COUNTY SCHOOL DISTRICT  
HOWARD HIGH SCHOOL**

FACILITY NUMBER:	1015
INSTRUCTIONAL UNITS:	64
FTE:	1200
SITE ACREAGE:	130.8
AREA:	
MAIN BUILDING:	178,027 SF
EXTERIOR COVERED @ 1/2:	875 SF
TOTAL:	178,902 SF

**Manley  
Spangler  
Smith  
Architects**  
A Professional Corporation