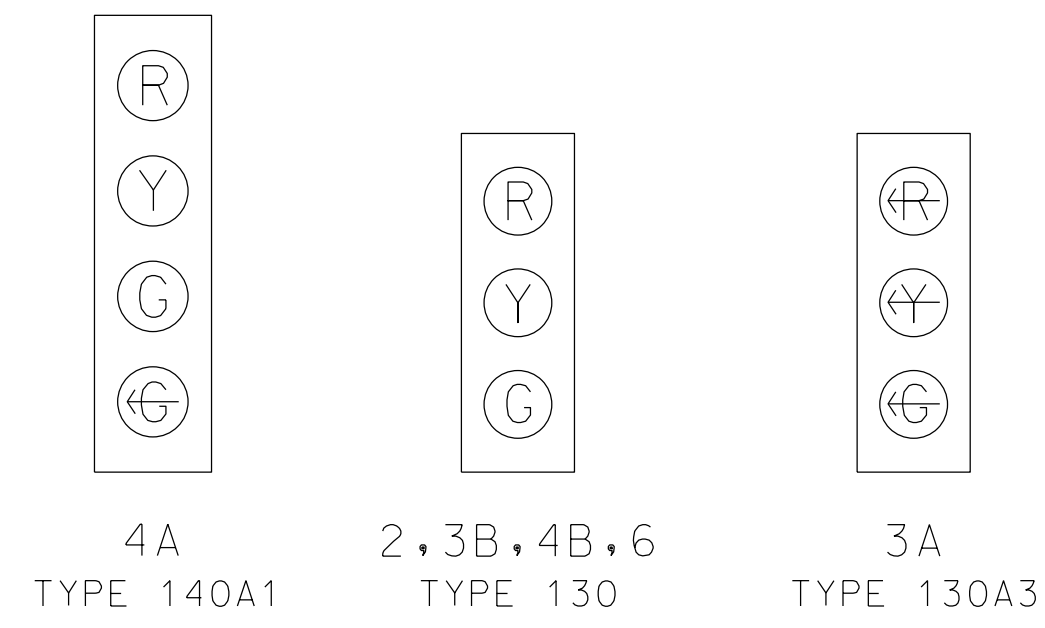


SIGNAL HEADS



SIGN SCHEDULE



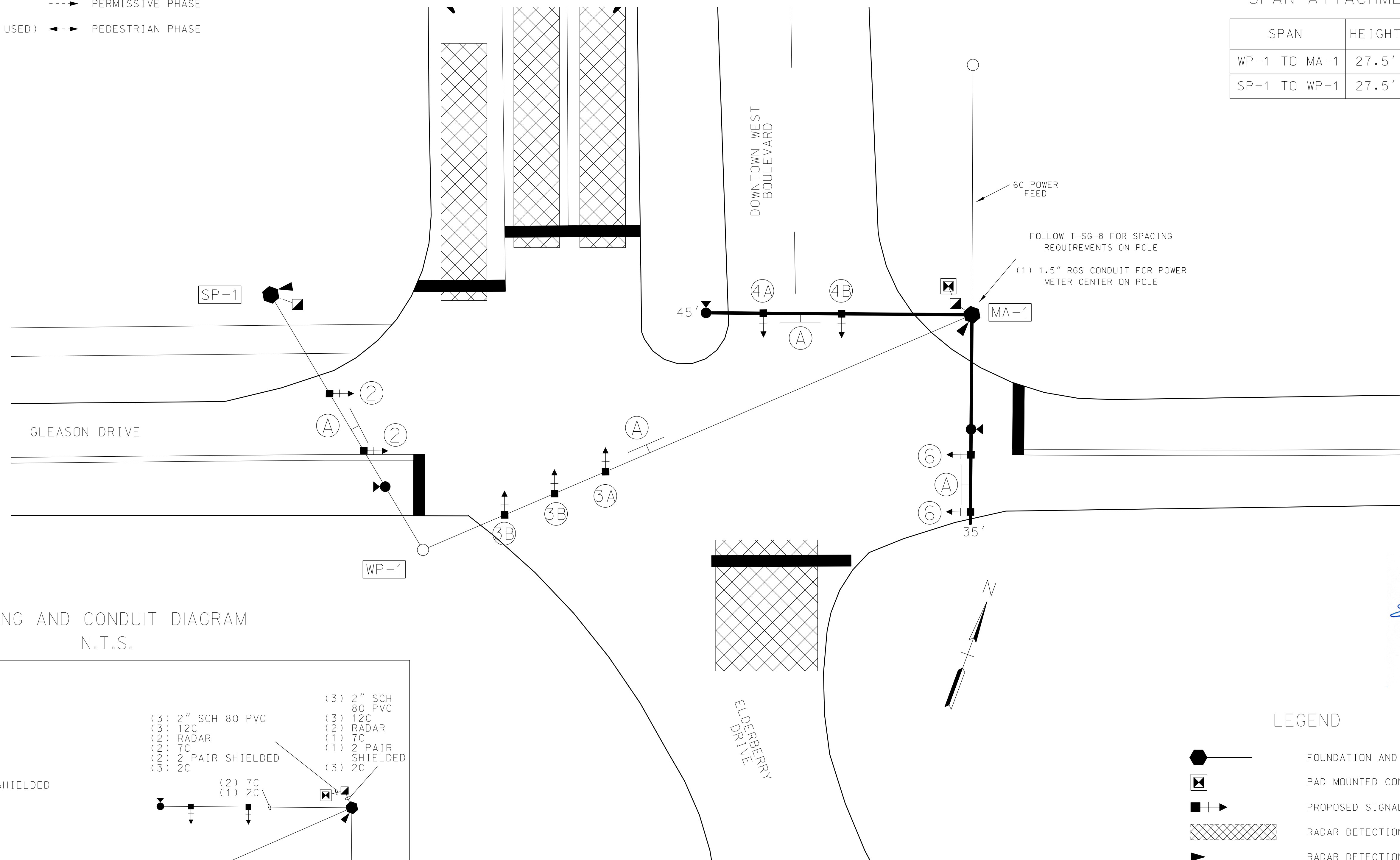
SIGNAL POLE DATA

POLE NO.	NORTHING	EASTING	ATTACH ELEV.	POLE HEIGHT	ARM LENGTH	FOOTING DEPTH
MA-1	582791.1098	2545696.6479	20'	31'	45', 35'	MIN 15'*
SP-1	582752.2144	2545580.2990	N/A	30'	N/A	MIN 15'*

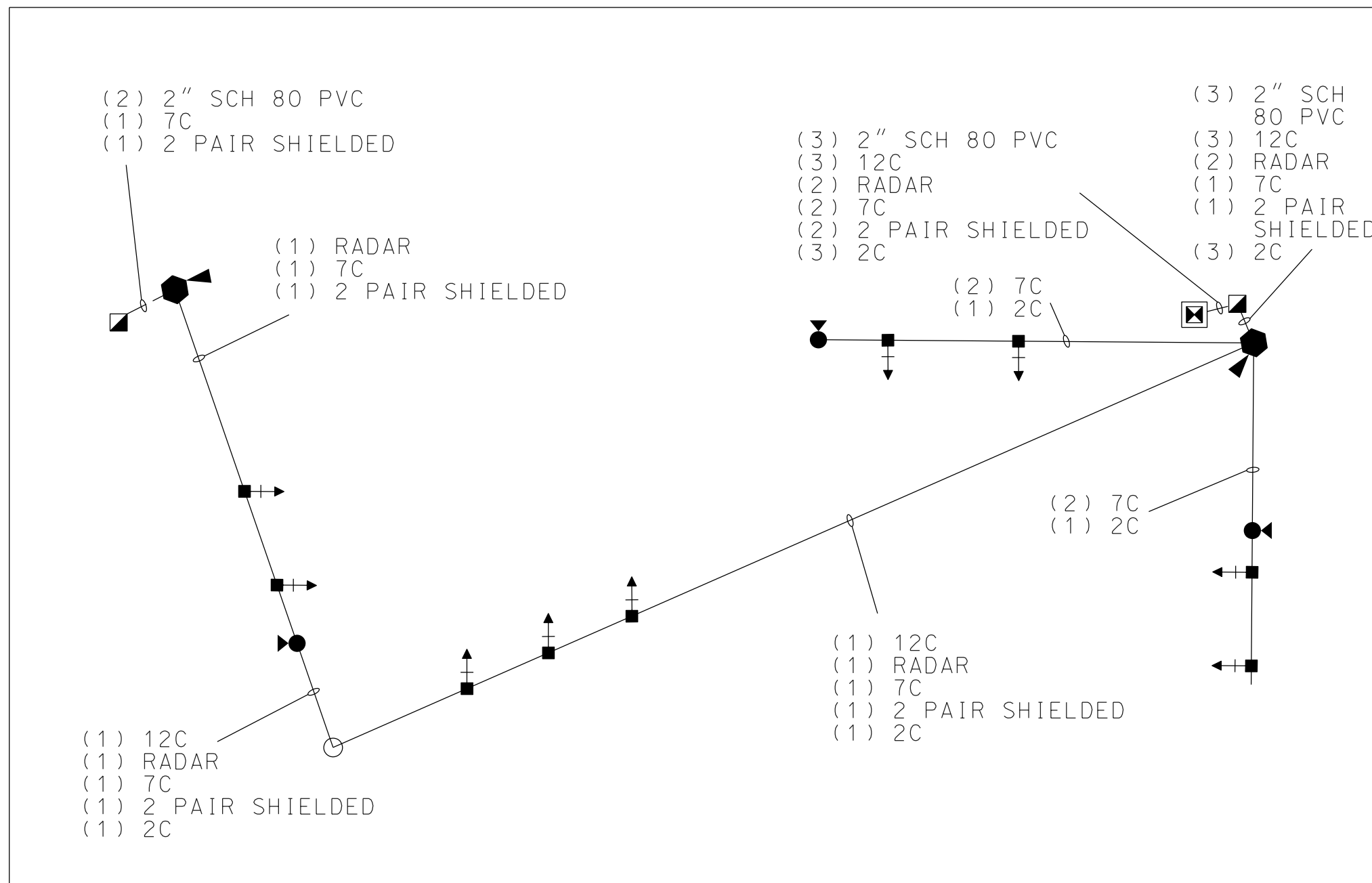
\* FOOTING DEPTHS WILL BE BASED ON POLE MAX BENDING MOMENT FROM DESIGN AND COK FOUNDATION DESIGN REQUIREMENTS (COK-SG-10)

SPAN ATTACHMENT HEIGHT

SPAN	HEIGHT	SPAN LENGTH
WP-1 TO MA-1	27.5'	104.5'
SP-1 TO WP-1	27.5'	52.0'



WIRING AND CONDUIT DIAGRAM N.T.S.



LEGEND

- FOUNDATION AND SIGNAL ARM SUPPORT
- PAD MOUNTED CONTROLLER CABINET
- PROPOSED SIGNAL HEAD W/ BACKPLATE
- RADAR DETECTION ZONE
- RADAR DETECTION UNIT
- PROPOSED SIGN
- TRAFFIC SIGNAL PULL BOX (17" X 30" X 12")
- PROPOSED UNDERGROUND CONDUIT
- EMERGENCY VEHICLE PREEMPTION
- EXISTING WOODEN KUB POLE
- PROPOSED SIGNAL STRAIN POLE



Gleason Drive and Downtown West Boulevard Signalization

City Blocks: 46242, 46300, 46304



Drawn by: ECH  
 Designed by: ECH  
 Approved by: ECH  
 Scale: 1" = 10'  
 Date: 04/29/22  
 SHEET 1 OF 1