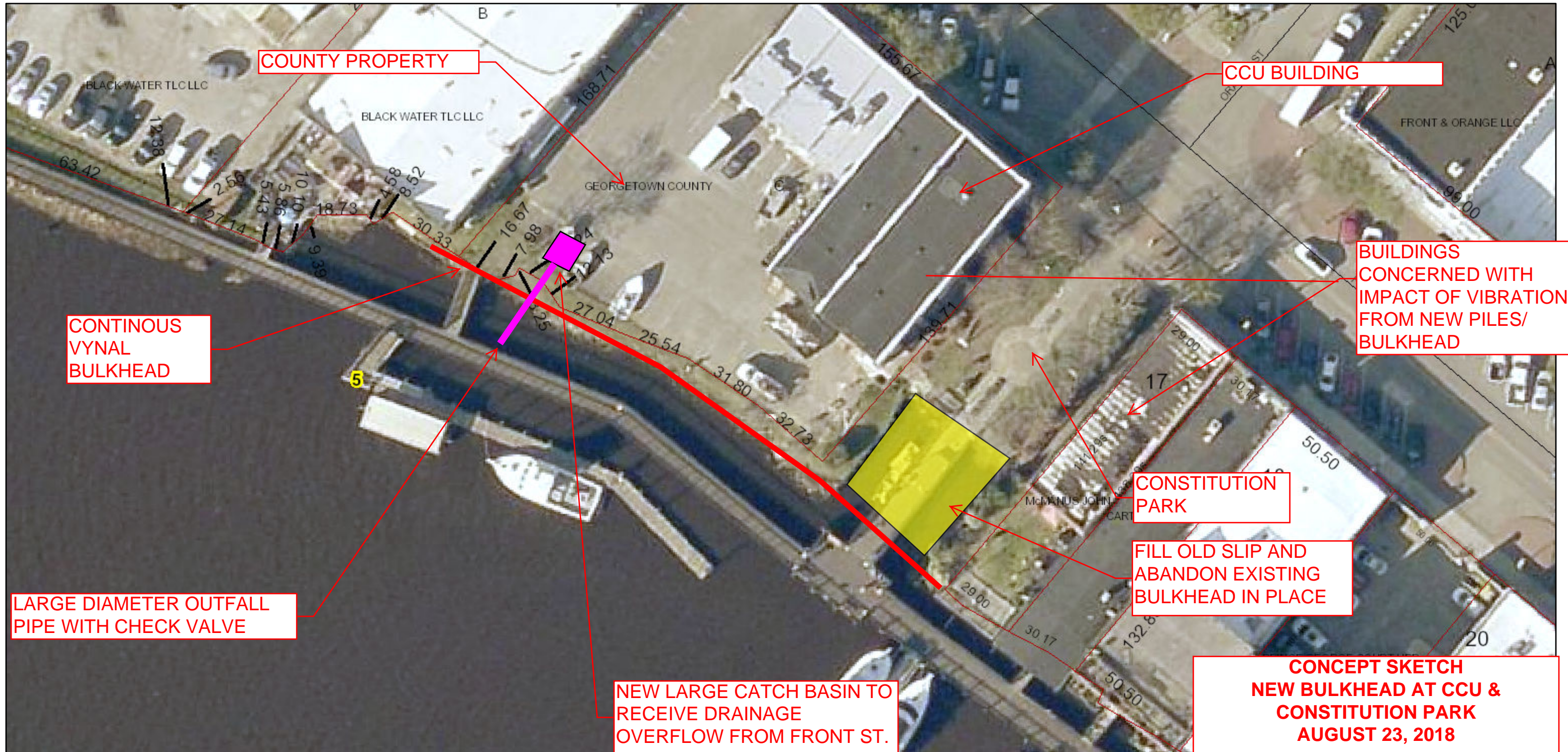
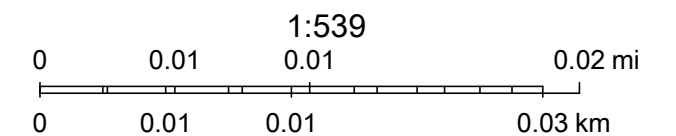


ArcGIS Web Map



8/23/2018 4:30:15 PM

- | | | |
|-----------------|-------------------|-----------|
| County Boundary | Railroads | Lot Lines |
| Municipalities | Tax Districts | Streets |
| Landmarks | Owner Name On/Off | Highways |



Sources: Esri, HERE, Garmin, Intermap, increment P Corp., GEBCO, USGS, FAO, NPS, NRCAN, GeoBase, IGN, Kadaster NL, Ordnance Survey, Esri Japan, METI, Esri China (Hong Kong), swisstopo, © OpenStreetMap contributors, and the GIS User