

**Georgetown Stormwater Management Plan**

Project Priority #1  
Front Street  
Closed System Alternative



1 in = 50 feet



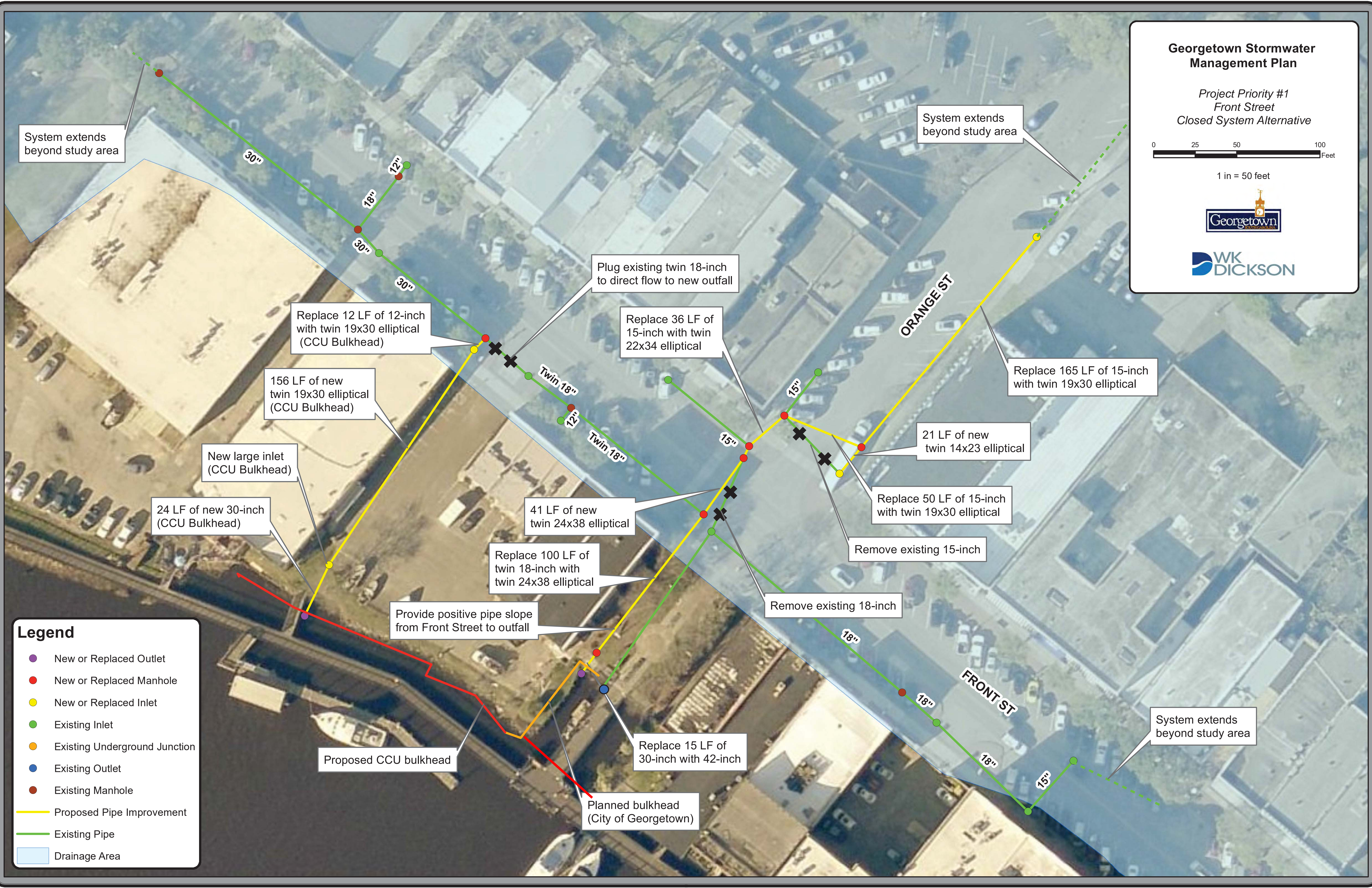
System extends beyond study area

System extends beyond study area

System extends beyond study area

**Legend**

- New or Replaced Outlet
- New or Replaced Manhole
- New or Replaced Inlet
- Existing Inlet
- Existing Underground Junction
- Existing Outlet
- Existing Manhole
- Proposed Pipe Improvement
- Existing Pipe
- Drainage Area



Replace 12 LF of 12-inch with twin 19x30 elliptical (CCU Bulkhead)

156 LF of new twin 19x30 elliptical (CCU Bulkhead)

New large inlet (CCU Bulkhead)

24 LF of new 30-inch (CCU Bulkhead)

Provide positive pipe slope from Front Street to outfall

Proposed CCU bulkhead

Plug existing twin 18-inch to direct flow to new outfall

Replace 36 LF of 15-inch with twin 22x34 elliptical

41 LF of new twin 24x38 elliptical

Replace 100 LF of twin 18-inch with twin 24x38 elliptical

Replace 15 LF of 30-inch with 42-inch

Planned bulkhead (City of Georgetown)

ORANGE ST

FRONT ST

Replace 165 LF of 15-inch with twin 19x30 elliptical

21 LF of new twin 14x23 elliptical

Replace 50 LF of 15-inch with twin 19x30 elliptical

Remove existing 15-inch

Remove existing 18-inch

30"

18"

30"

30"

30"

Twin 18"

12"

Twin 18"

15"

15"

18"

18"

18"

15"