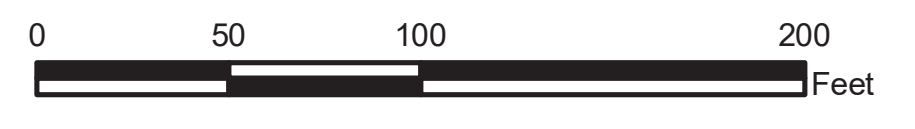


Legend



- New or Replaced Outlet
- New or Replaced Manhole
- New or Replaced Inlet
- Existing Inlet
- Existing Outlet
- Existing Manhole
- Proposed Pipe Improvement
- Existing Pipe
- Drainage Area

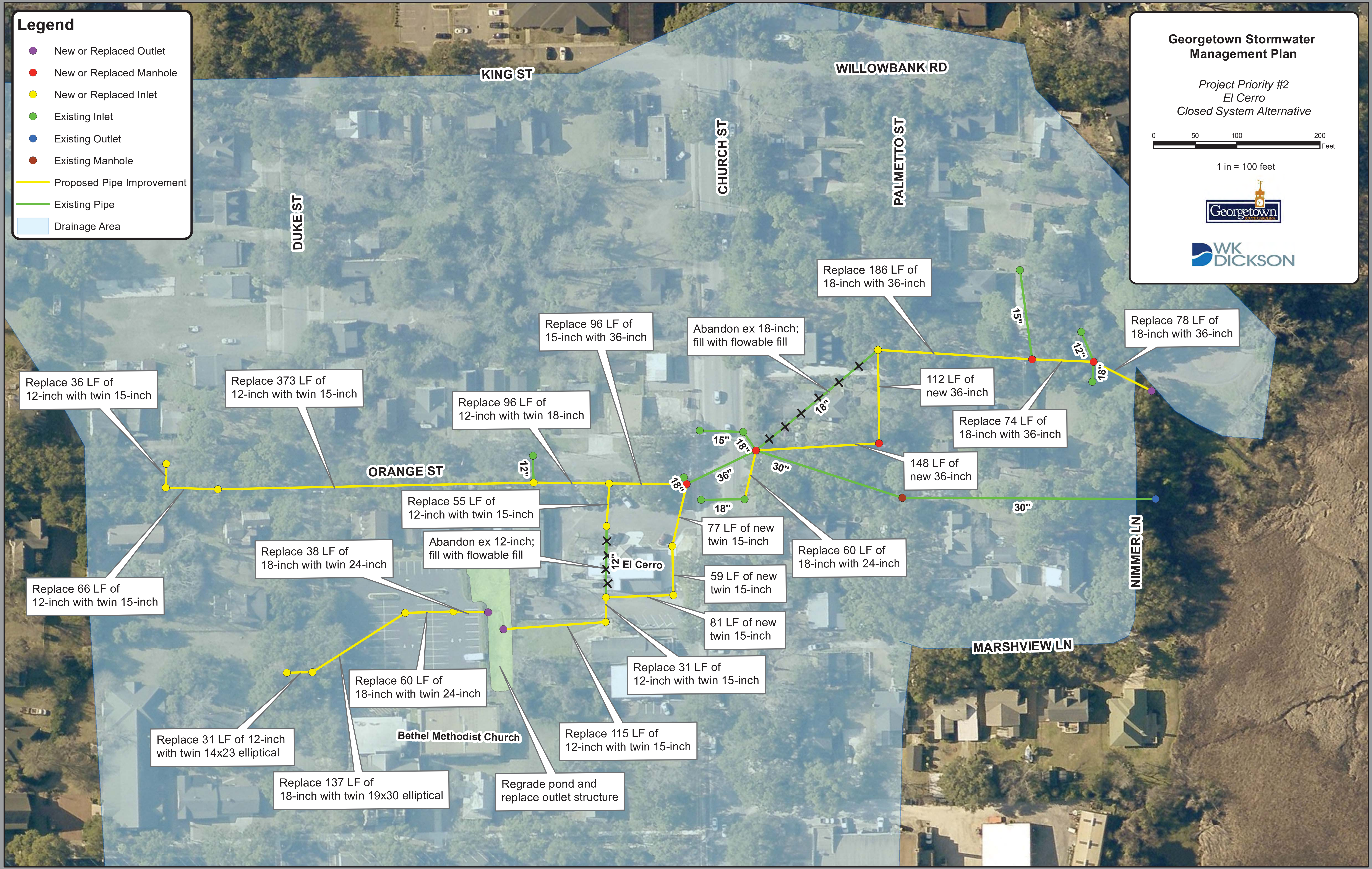
Georgetown Stormwater Management Plan

Project Priority #2
El Cerro
Closed System Alternative



1 in = 100 feet



Replace 36 LF of 12-inch with twin 15-inch

Replace 373 LF of 12-inch with twin 15-inch

Replace 96 LF of 12-inch with twin 18-inch

Replace 96 LF of 15-inch with 36-inch

Abandon ex 18-inch; fill with flowable fill

Replace 186 LF of 18-inch with 36-inch

112 LF of new 36-inch

Replace 78 LF of 18-inch with 36-inch

Replace 74 LF of 18-inch with 36-inch

148 LF of new 36-inch

ORANGE ST

Replace 55 LF of 12-inch with twin 15-inch

Replace 38 LF of 18-inch with twin 24-inch

Abandon ex 12-inch; fill with flowable fill

77 LF of new twin 15-inch

Replace 60 LF of 18-inch with 24-inch

Replace 66 LF of 12-inch with twin 15-inch

59 LF of new twin 15-inch

81 LF of new twin 15-inch

Replace 60 LF of 18-inch with twin 24-inch

Replace 31 LF of 12-inch with twin 15-inch

Replace 31 LF of 12-inch with twin 14x23 elliptical

Replace 137 LF of 18-inch with twin 19x30 elliptical

Bethel Methodist Church

Replace 115 LF of 12-inch with twin 15-inch

Regrade pond and replace outlet structure

MARSHVIEW LN

NIMMER LN

KING ST

WILLOWBANK RD

CHURCH ST

PALMETTO ST

DUKE ST

El Cerro