

NOTES:

1. COORDINATE SERVICE REQUIREMENTS WITH LOCAL UTILITIES PRIOR TO ROUGH-IN.
2. STUB-OUT CONDUIT 5' FROM BUILDING FOOTER INTO IT ROOM.

COPYRIGHT & REPRODUCTION OF DRAWINGS: This drawing is the property of W.S. E.D. INTERNATIONAL, and it is not to be reproduced or copied in whole or in part. It is not to be used on any other project. Do not make dimensions for parts, items and details are not always shown to scale. Use dimensions given or call the architect for further confirmation.



HUSSEY GAY BELL
Established 1958

REVISIONS

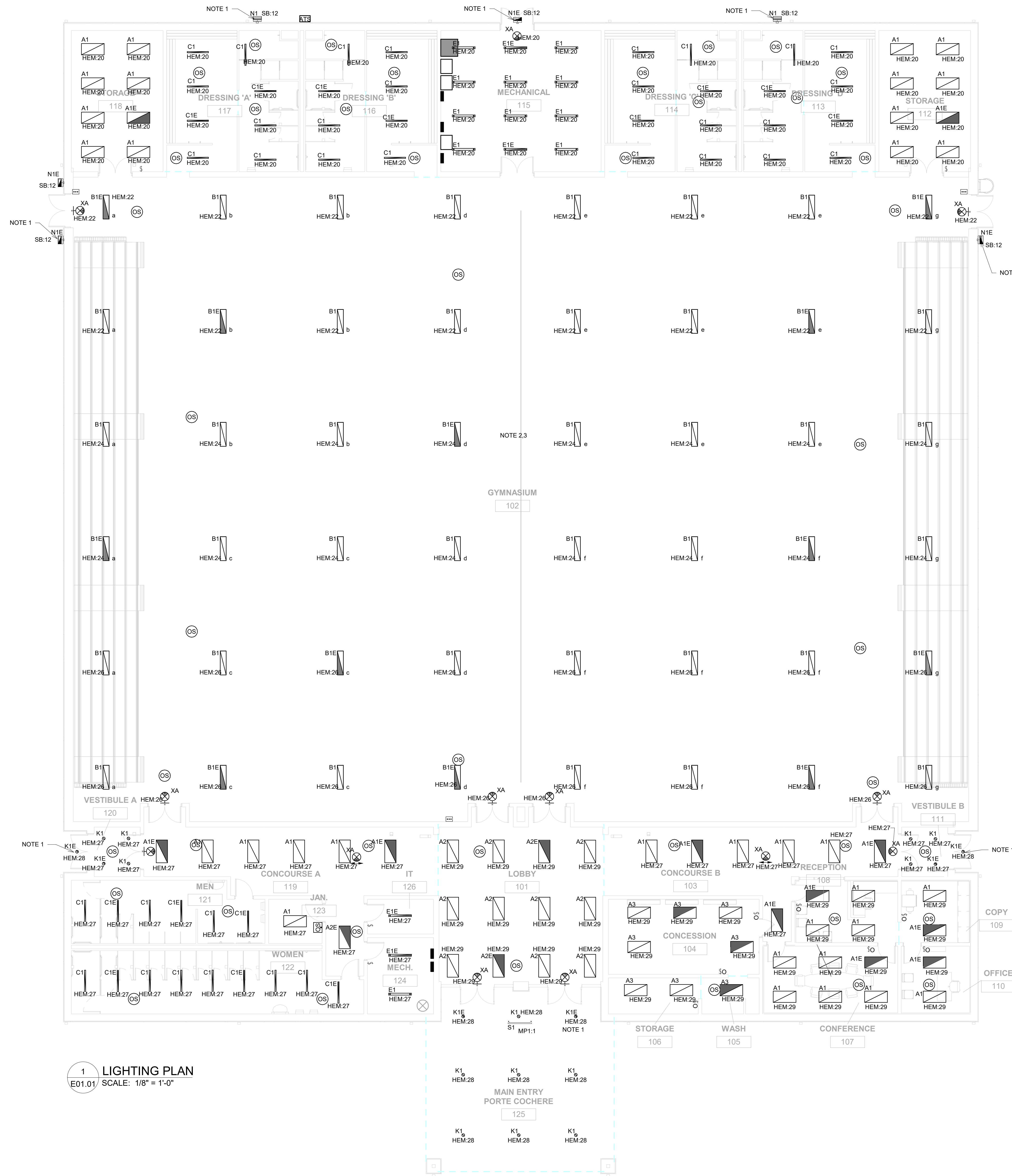
| DESIGNED | DRAWN | CHECKED |
|---------------------|-------|---------|
| WRL | WLS | WRL |
| DATE: 05/23/2019 | | |
| JOB NO. 216 4801 01 | | |
| 05/09/19 | | |

EFFINGHAM COUNTY GYMNASIUM
CLARENCE E. MORGAN RECREATION COMPLEX
 1750 GA. 21, SPRINGFIELD, GEORGIA 31329

ELECTRICAL SITE PLAN

DRAWING NUMBER

E00.02



| LIGHTING FIXTURE SCHEDULE | | | | | | | |
|---------------------------|--------------------------------|---|--|-------------------|-------------------|---------------------|-------------------------|
| TYPE | DESCRIPTION | MANUFACTURER/SERIES | REFLECTOR/DIFFUSER | FINISH | MOUNTING | LAMPS | NOTES |
| A1 | LED TROFFER | METALUX SB 24CZ SERIES OR CREE, OR LITHONIA EQUALS | FROSTED ACRYLIC LENS | WHITE | RECESSED | >3800 LUMENS <50W | A1E-W/ INTEGRAL BATTERY |
| A2 | LED TROFFER | METALUX SB 24CZ SERIES OR CREE, OR LITHONIA EQUALS | | | | >4800 LUMENS <50W | A2E-W/ INTEGRAL BATTERY |
| A3 | LED FLAT PANEL | METALUX SB 24FP SERIES OR CREE, OR LITHONIA EQUALS | | | | >3800 LUMENS <50W | A3E-W/ INTEGRAL BATTERY |
| B1 | LED HIGH-BAY SLIMLINE | ORION HBH51 SERIES OR PRIOR APPROVED EQUAL | W/ LENS & WIREGUARD | WHITE (HOUSING) | SUSPENDED CEILING | >20000 LUMENS <157W | B1E-W/ INTEGRAL BATTERY |
| C1 | 4' LONG STANDARD STRIPS | METALUX SNLED SERIES OR CREE, OR LITHONIA EQUALS | SEMI-FROSTED LENS | WHITE (HOUSING) | SURFACE CEILING | >5000 LUMENS <60W | C1E-W/ INTEGRAL BATTERY |
| E1 | 4' LONG STANDARD STRIPS | METALUX SNLED SERIES OR CREE, OR LITHONIA EQUALS | SEMI-FROSTED LENS | WHITE (HOUSING) | SUSPENDED CEILING | >5000 LUMENS <60W | E1E-W/ INTEGRAL BATTERY |
| K1 | 4" ROUND LED DOWN LIGHT | HALO COMMERCIAL PD6 SERIES OR LITELINE, OR LITHONIA EQUALS | DIFFUSED W/CLAR LENS | TRIM RING - WHITE | RECESSED CEILING | >2000 LUMENS <30W | |
| N1 | LED WALL PACK VANDAL RESISTANT | LUMARK CROSSTOUR OR APPROVED EQUALS | TYPE IV DISTRIBUTION | DARK BRONZE | WALL SURFACE | >4000 LUMENS <55W | A1E-W/ INTEGRAL BATTERY |
| S1 | LED LINEAR WALLWASHER | NORTHSTAR LIGHTING OR APPROVED EQUALS | CLEAR GLASS LENS/ TIR OPTICS | WHITE | WALL SURFACE | >5000 LUMENS <60W | |
| XA | SINGLE FACE EXIT | LIGHTGUARD DX SERIES LITHONIA LE SERIES BEGHELLI LC1E SERIES DUAL LITE CVD SERIES SURE-LITE CX SERIES | RED LETTERS "EXIT" NICKEL CADMIUM BATTERY. | WHITE | UNIVERSAL | LED | |
| XB | DOUBLE FACE EXIT | | | | | | |
| XC | EXIT EMERGENCY LIGHT COMBO | SURE-LITE APC SERIES | DIFFUSED W/CLAR LENS | WHITE | UNIVERSAL | LED | |

- NOTES:**
- EXTEND CIRCUIT THROUGH A PHOTOCCELL, LOCATED ON NORTH SIDE OF BUILDING NEAR ROOF AND AWAY FROM ARTIFICIAL SOURCES OF LIGHT. PROVIDE ADDITIONAL UNSWITCHED, UNGROUNDED CONDUCTOR TO EACH EMERGENCY FIXTURE FOR BATTERY STATUS SIGNAL.
 - PROVIDE (12) ZONE LIGHTING CONTROL SYSTEM WITH (8) ZONE PUSHBUTTON STATIONS AT LOCATIONS SHOWN. PROVIDE ROOM CONTROLLER, PARTITION SENSOR, AND ALL ACCESSORIES, CABLING, AND PROGRAMMING. WHEN DIVIDER IS CLOSED PUSHBUTTON STATIONS SHALL CONTROL RESPECTIVE GYM ONLY. SYSTEM SHALL RESET AUTOMATICALLY WHEN DIVIDERS OPEN.
 - PROVIDE WIREGUARDS ON ALL WALL MOUNTED DEVICES IN GYMNASIUM.



HUSSEY GAY BELL
— Established 1958 —

| | | |
|---------------------|-------|---------|
| DESIGNED | DRAWN | CHECKED |
| WRL | WLS | WRL |
| DATE: 05/23/2019 | | |
| JOB NO. 216 4801 01 | | |
| 05/09/19 | | |

EFFINGHAM COUNTY GYMNASIUM
CLARENCE E. MORGAN RECREATION COMPLEX
1750 GA. 21, SPRINGFIELD, GEORGIA 31329

DRAWING NUMBER

E01.01



HUSSEY GAY BELL
— Established 1958 —

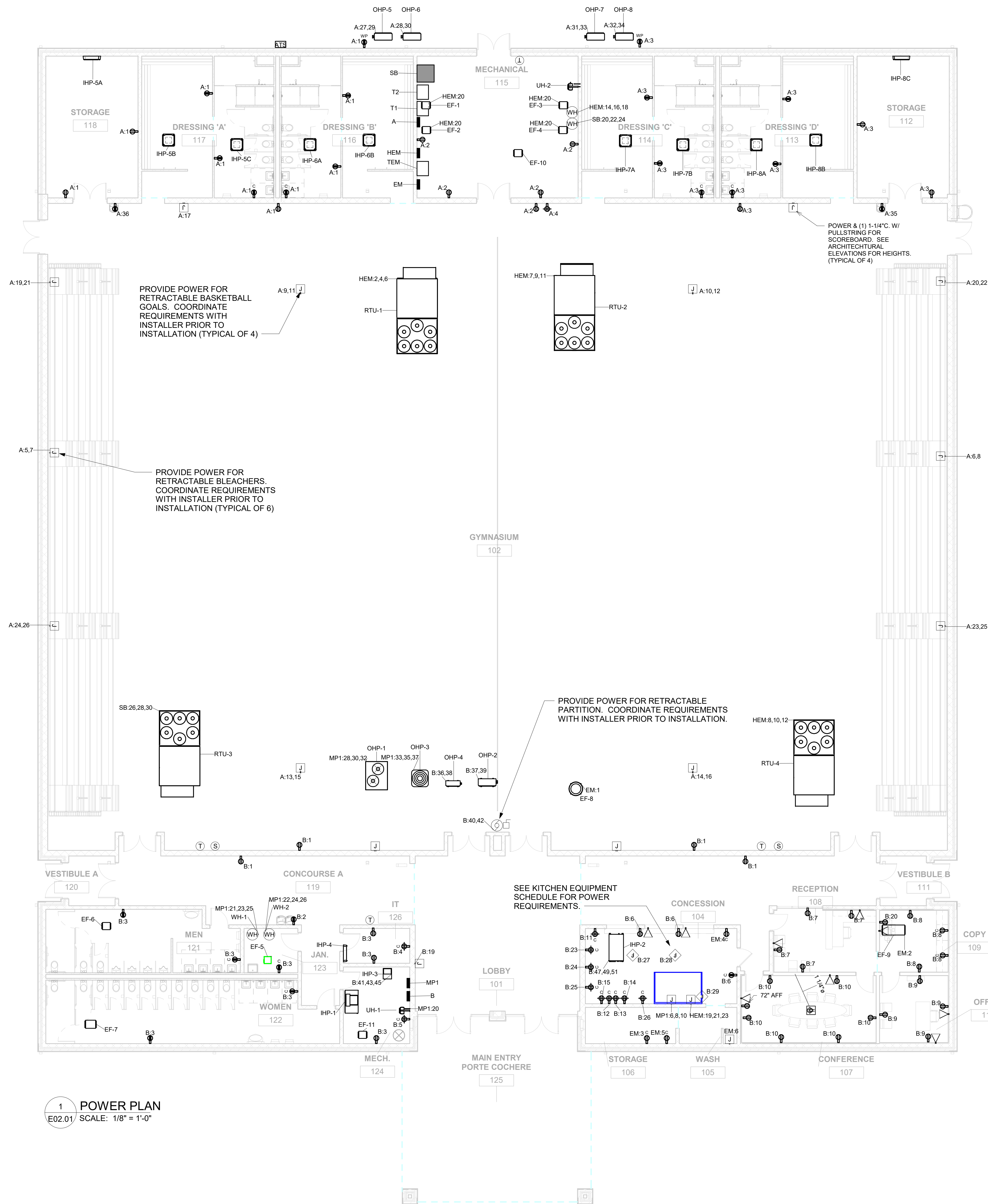
REVISIONS

| DESIGNED | DRAWN | CHECKED |
|---------------------|-------|---------|
| WRL | WLS | WRL |
| | | |
| DATE: 05/23/2019 | | |
| JOB NO. 216 4801 01 | | |
| 05/09/19 | | |

EFFINGHAM COUNTY GYMNASIUM
CLARENCE E. MORGAN RECREATION COMPLEX
1750 GA. 21, SPRINGFIELD, GEORGIA 31329

DRAWING NUMBER

E02.01



MECHANICAL EQUIPMENT SCHEDULE

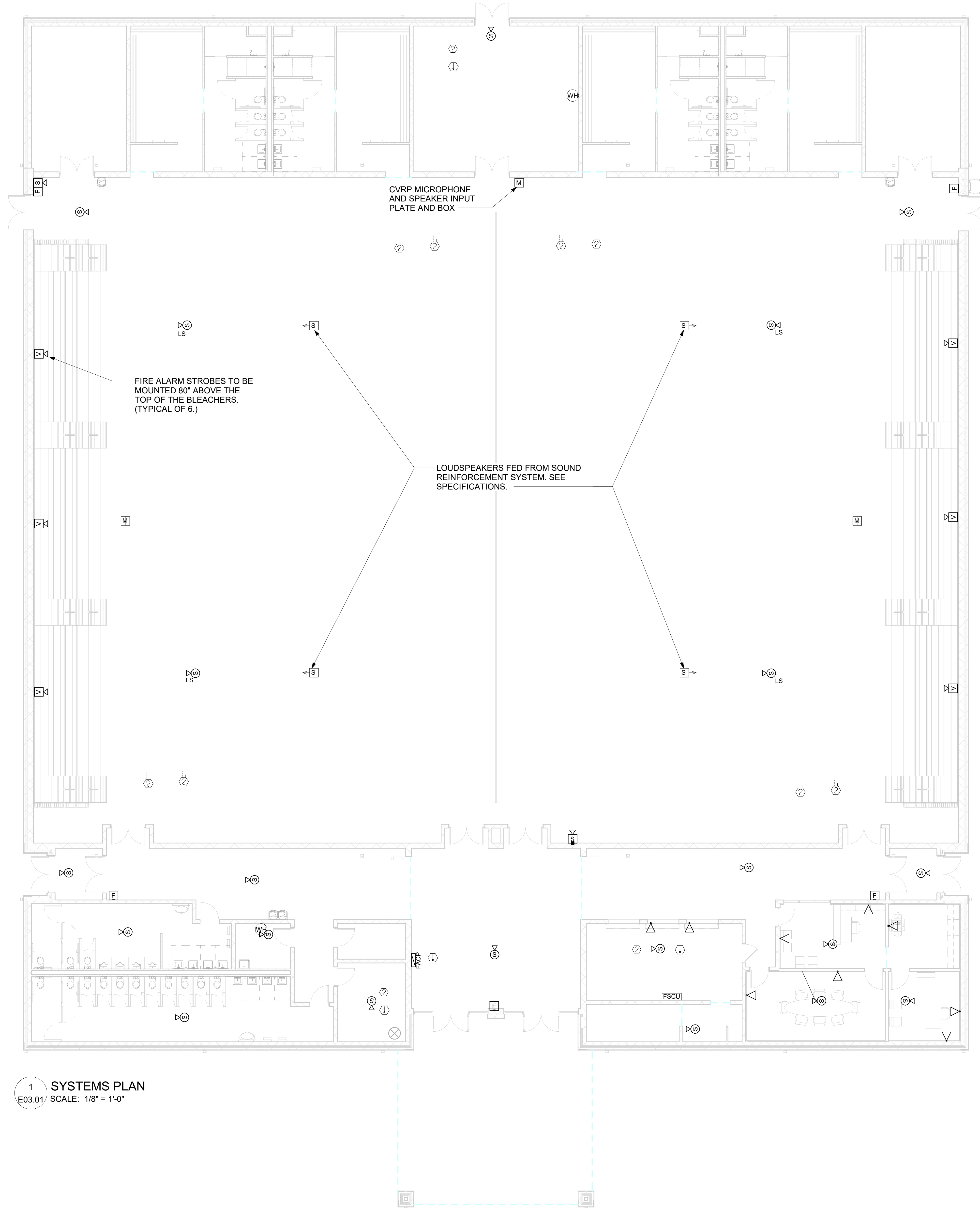
| ITEM # | VOLTS | PHASE | AMPS | MCA | MOCP | DISCONNECT | CONNECTIONS | NOTES |
|------------------|-------|-------|------|-------|------|---------------|-------------------------------------|---|
| RTU-1 | 480 | 3 | 125 | 156.8 | 90/3 | 100/3/R | 2" W(3) #3/0 AWG & (1) #6 AWG (G) | |
| RTU-2 | 480 | 3 | 125 | 156.8 | 90/3 | 100/3/R | 2" W(3) #3/0 AWG & (1) #6 AWG (G) | |
| RTU-3 | 480 | 3 | 125 | 156.8 | 90/3 | 100/3/R | 2" W(3) #3/0 AWG & (1) #6 AWG (G) | |
| RTU-4 | 480 | 3 | 125 | 156.8 | 90/3 | 100/3/R | 2" W(3) #3/0 AWG & (1) #6 AWG (G) | |
| OHP-1 | 480 | 3 | 14.4 | 18 | 30/3 | 30/3/R | 3/4" W(3) #10 AWG & (1) #10 AWG (G) | |
| IHP-1 | 480 | 3 | 22.8 | 28.6 | 30/3 | 30/3/1 | 3/4" W(3) #10 AWG & (1) #10 AWG (G) | |
| IHP-2 | 208 | 3 | 3.75 | 5 | 15/3 | 30/3/1 | 1/2" W(3) #12 AWG & (1) #12 AWG (G) | |
| IHP-3 | 208 | 3 | 20 | 32 | 35/2 | 60/2/3/R | 1" W(3) #8 AWG & (1) #10 AWG (G) | |
| OHP-5 | 208 | 1 | 20 | 25 | 35/2 | 60/2/3/R | 3/4" W(3) #10 AWG & (1) #10 AWG (G) | UNIT PROVIDES POWER FOR IHP-5A, IHP-5B & IHP-5C. NOTE 1 |
| OHP-6 | 208 | 1 | 14.4 | 18 | 25/2 | 30/2/3/R | 1/2" W(3) #12 AWG & (1) #12 AWG (G) | UNIT PROVIDES POWER FOR IHP-5A, IHP-5B & IHP-5C. NOTE 1 |
| OHP-7 | 208 | 1 | 14.4 | 18 | 25/2 | 30/2/3/R | 1/2" W(3) #12 AWG & (1) #12 AWG (G) | UNIT PROVIDES POWER FOR IHP-5A, IHP-5B & IHP-5C. NOTE 1 |
| OHP-8 | 208 | 1 | 20 | 25 | 35/2 | 60/2/3/R | 3/4" W(3) #10 AWG & (1) #10 AWG (G) | UNIT PROVIDES POWER FOR IHP-5A, IHP-5B & IHP-5C. NOTE 1 |
| OHP-2 | 208 | 1 | 28 | 35 | 50/2 | 60/2/3/R | 1" W(3) #8 AWG & (1) #10 AWG (G) | |
| OHP-3 | 208 | 1 | 16 | 20 | 30/2 | 30/2/3/R | 3/4" W(2) #10 AWG & (1) #10 AWG (G) | |
| OHP-4 | 208 | 1 | 7.2 | 9 | 15/2 | 30/2/3/R | 1/2" W(2) #12 AWG & (1) #12 AWG (G) | UNIT PROVIDES POWER FOR IHP-4. NOTE 1 |
| UH-1 | 277 | 1 | 11 | 14 | 20/1 | SW | 1/2" W(2) #12 AWG & (1) #12 AWG (G) | |
| UH-2 | 277 | 1 | 14.5 | 18 | 20/1 | SW | 3/4" W(2) #10 AWG & (1) #10 AWG (G) | |
| EF-1,2,3,4,5,6,7 | 277 | 1 | 2 | 10 | 20/1 | SW | 1/2" W(2) #12 AWG & (1) #12 AWG (G) | FAN TO COME ON WITH LIGHT IN ROOM FAN IS SERVING |
| EF-5 | 120 | 1 | 16 | 20 | 15/1 | SW | 1/2" W(2) #12 AWG & (1) #12 AWG (G) | FAN TO COME ON WITH LIGHT IN ROOM FAN IS SERVING |
| EF-8 | 120 | 1 | 16 | 20 | 35/1 | CONTROL PANEL | 3/4" W(2) #8 AWG & (1) #10 AWG (G) | SEE HOOD DETAILS |
| EF-9 | 120 | 1 | 13.8 | 17.3 | 30/1 | | 3/4" W(2) #10 AWG & (1) #10 AWG (G) | SEE HOOD DETAILS |
| EF-10,11 | 277 | 1 | 7.2 | 9 | 15/1 | SW | | FAN TO BE CONTROLLED BY THERMOSTAT |
| WH-1 | 480 | 3 | 44 | 55 | 70/3 | 100/3/1 | 1 1/4" W(3) #4 AWG & (1) #8 AWG (G) | |
| WH-2 | 480 | 3 | 44 | 55 | 70/3 | 100/3/1 | 1 1/4" W(3) #4 AWG & (1) #8 AWG (G) | |
| WH-3 | 480 | 3 | 23 | 29 | 40/3 | 60/3/1 | 1" W(3) #8 AWG & (1) #10 AWG (G) | |
| WH-4 | 480 | 3 | 23 | 29 | 40/3 | 60/3/1 | 1" W(3) #8 AWG & (1) #10 AWG (G) | |

NOTES:
1. PROVIDE 30A, 3 POLE MOTOR RATED SWITCH AT INDOOR UNIT. DIVISION 26 CONTRACTOR SHALL PROVIDE CONNECTIONS BETWEEN INDOOR AND OUTDOOR UNIT.

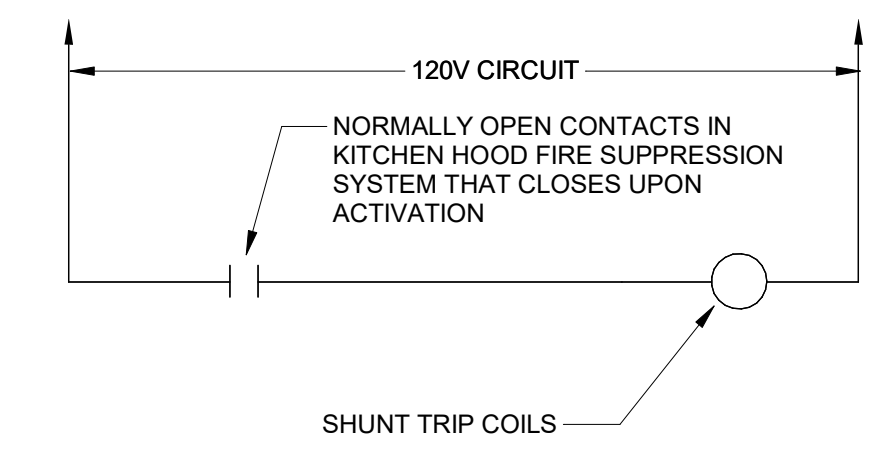
KITCHEN EQUIPMENT SCHEDULE

| ITEM # | VOLTS | PHASE | DESCRIPTION | AMPS | MCA | MOCP | DISCONNECT | CONNECTIONS | NOTES |
|--------|-------|-------|------------------|------|------|------|------------|--------------------------------------|---|
| 13 | 480 | 3 | GRIDDLE | 19.5 | 24.5 | 25/3 | 25/3/1 | 3/4" W(4) #10 AWG & (1) #10 AWG (G) | |
| 14 | 480 | 3 | FRYER | 36 | 45 | 50/3 | 60/3/1 | 1 1/4" W(4) #6 AWG & (1) #10 AWG (G) | |
| 2 | 120 | 1 | FREEZER | 7.2 | 9 | 20/1 | 5-15P | 1/2" W(2) #12 AWG & (1) #12 AWG (G) | |
| 8 | 120 | 1 | REFRIGERATOR | 5.4 | 7 | 20/1 | 5-15P | 1/2" W(2) #12 AWG & (1) #12 AWG (G) | |
| 9 | 120 | 1 | REFRIGERATOR | 5.4 | 7 | 20/1 | 5-15P | 1/2" W(2) #12 AWG & (1) #12 AWG (G) | |
| 12 | 120 | 1 | HOOD LIGHTS | 20 | 20 | 20/1 | 30/2/1 | 1/2" W(2) #12 AWG & (1) #12 AWG (G) | |
| 17 | 120 | 1 | HOTDOG GRILL | 12.8 | 16 | 20/1 | 5-15P | 1/2" W(2) #12 AWG & (1) #12 AWG (G) | |
| 18 | 120 | 1 | BUN WARMER | 4 | 1 | 20/1 | 5-15P | 1/2" W(2) #12 AWG & (1) #12 AWG (G) | |
| 19 | 120 | 1 | POPCORN MACHINE | 10 | 12.5 | 20/1 | 5-15P | 1/2" W(2) #12 AWG & (1) #12 AWG (G) | |
| 20 | 120 | 1 | ICE MACHINE | 12.2 | 15.5 | 20/1 | 5-15P | 1/2" W(2) #12 AWG & (1) #12 AWG (G) | |
| 22 | 120 | 1 | ICE MACHINE | 12.2 | 15.5 | 20/1 | 5-15P | 1/2" W(2) #12 AWG & (1) #12 AWG (G) | |
| 24 | 120 | 1 | MOBILE WORKTABLE | 12.2 | 15.5 | 20/1 | 5-20P | 1/2" W(2) #12 AWG & (1) #12 AWG (G) | PROVIDE CONVENIENCE RECEPTACLE DROP CORD FROM CEILING |
| 25 | 120 | 1 | MOBILE WORKTABLE | 12.2 | 15.5 | 20/1 | 5-20P | 1/2" W(2) #12 AWG & (1) #12 AWG (G) | PROVIDE CONVENIENCE RECEPTACLE DROP CORD FROM CEILING |

1 POWER PLAN
E02.01 SCALE: 1/8" = 1'-0"



1 SYSTEMS PLAN
E03.01 SCALE: 1/8" = 1'-0"



2 HOOD FIRE SUPPRESSION INTERLOCKS
E03.01 SCALE: NOT TO SCALE

COPYRIGHT & REPRODUCTION OF DRAWINGS: This drawing is the property of HUSSEY GAY BELL, ARCHITECTURAL, and is not to be reproduced or copied in whole or in part. It is not to be used on any other project. Do not scale dimensions from prints. Dimensions given on all sheets shall take precedence over those shown on other sheets. Use dimensions given on all sheets for further construction.



HUSSEY GAY BELL
— Established 1958 —

REVISIONS

| DESIGNED | DRAWN | CHECKED |
|----------------------|--------|---------|
| Designer | Author | Checker |
| | | |
| DATE: 05/23/2019 | | |
| JOB NO.: 216 4801 01 | | |
| 05/22/19 | | |

EFFINGHAM COUNTY GYMNASIUM
CLARENCE E. MORGAN RECREATION COMPLEX
1750 GA. 21, SPRINGFIELD, GEORGIA 31329

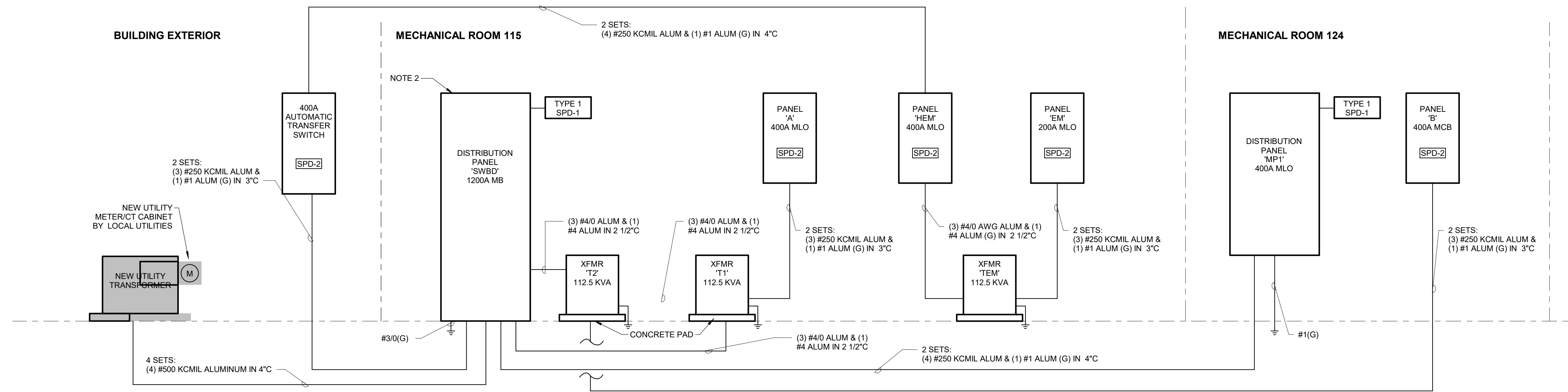
DRAWING NUMBER

E03.01

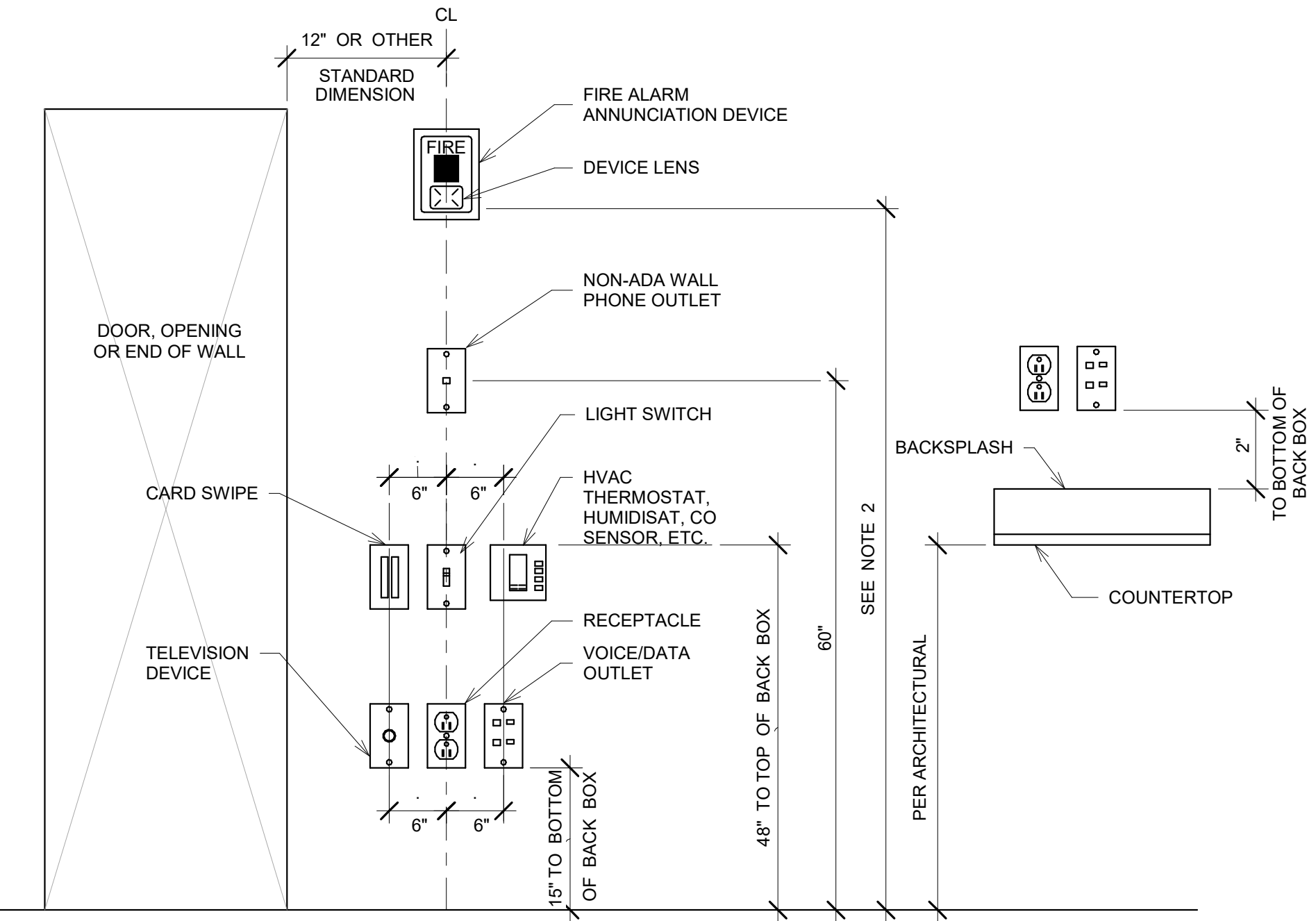
SYSTEMS PLAN

NOTES:

1.

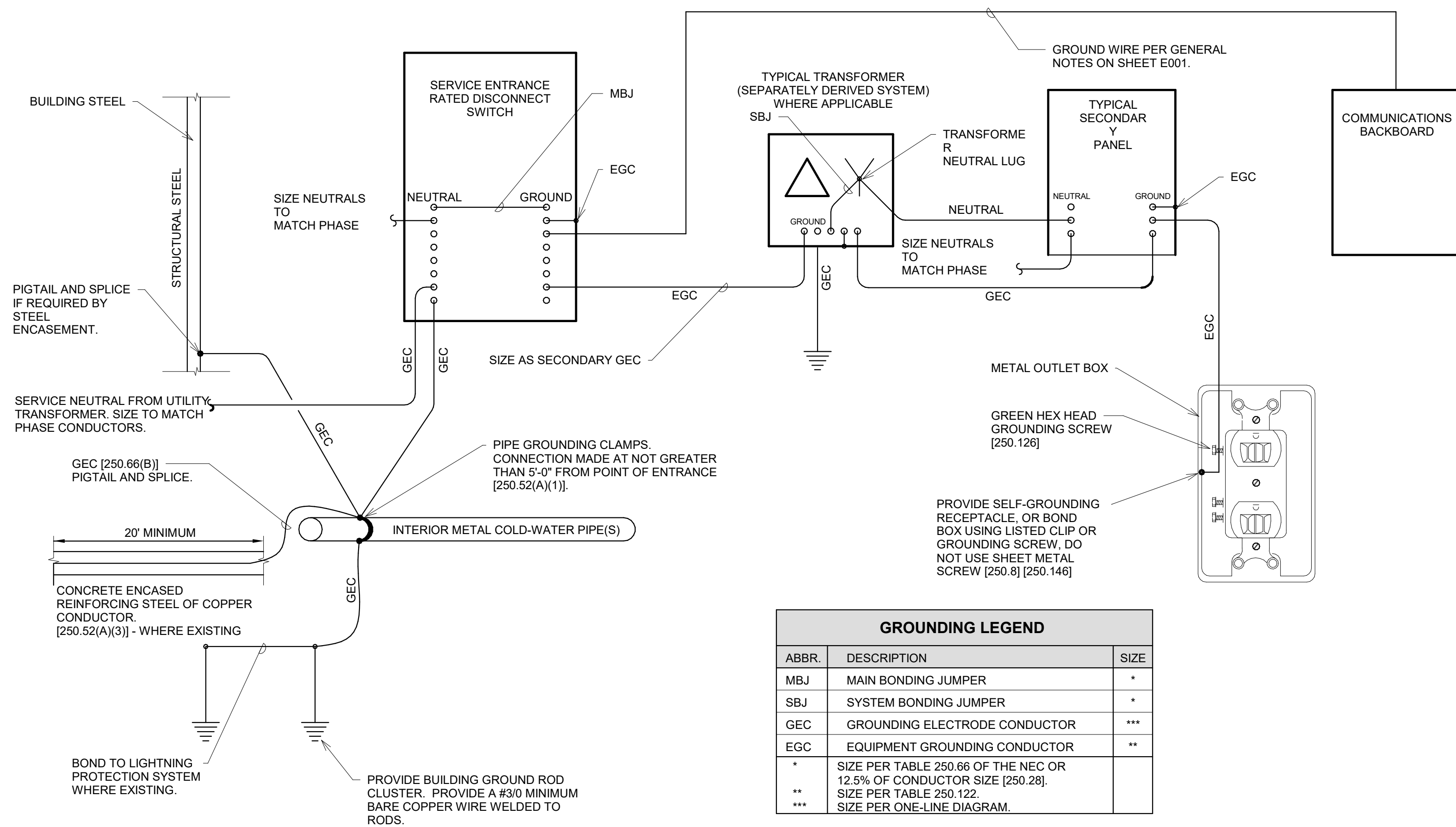


1 ONE-LINE DIAGRAM
E04.01 SCALE: NOT TO SCALE



NOTE 1: DEVICES SHOWN WITHIN 48" OF EACH OTHER ON ALL ELECTRICAL PLANS SHALL BE ALIGNED PER THIS DETAIL. IF DEVICES ARE SHOWN IN MIDDLE OF WALL, THEN CENTER DEVICES ON WALL.
NOTE 2: MOUNT 60" ABOVE FINISHED FLOOR WHERE POSSIBLE. WHERE CEILING HEIGHTS DO NOT ALLOW THIS HEIGHT, MOUNT 6" BELOW CEILING. WHERE OBSTRUCTIONS DO NOT ALLOW THIS HEIGHT, MOUNT 60" TO 96" ABOVE FINISHED FLOOR. ALL MOUNTING HEIGHTS FOR NOTIFICATION DEVICES SHALL BE MEASURED TO THE BOTTOM OF THE LENS.

2 DEVICE ALIGNMENT DETAIL
E04.01 SCALE: NOT TO SCALE



| ABBR. | DESCRIPTION | SIZE |
|-------|--|------|
| MBJ | MAIN BONDING JUMPER | * |
| SBJ | SYSTEM BONDING JUMPER | * |
| GEC | GROUNDING ELECTRODE CONDUCTOR | *** |
| EGC | EQUIPMENT GROUNDING CONDUCTOR | ** |
| * | SIZE PER TABLE 250.66 OF THE NEC OR 12.5% OF CONDUCTOR SIZE [250.28] | |
| ** | SIZE PER TABLE 250.122 | |
| *** | SIZE PER ONE-LINE DIAGRAM. | |

- GROUNDING NOTES:**
- NUMBERS IN BRACKETS REFER TO SPECIFIC SECTIONS OF THE NATIONAL ELECTRICAL CODE.
 - ALL UNDERGROUND OR OTHERWISE INACCESSIBLE GROUND CONNECTIONS AND SPLICES SHALL BE EXOTHERMICALLY WELDED [250.68].
 - GROUND ELECTRODE FOR SEPARATELY DERIVED SYSTEMS SHALL BE THE NEAREST METAL WATER PIPE OR STRUCTURAL METAL. IF EITHER IS NOT AVAILABLE, PROVIDE GROUNDING CONDUCTOR BACK TO MAIN GROUND BUS AT SERVICE ENTRANCE.
 - PROVIDE A GROUND WIRE IN ALL CONDUITS.
 - EARTH SHALL NOT BE USED AS THE SOLE GROUND RETURN PATH FOR ANY EQUIPMENT POWERED UNDER THIS PROJECT. OTHERWISE OVERCURRENT PROTECTION MIGHT NOT WORK, OR IT MIGHT CAUSE POWER QUALITY PROBLEMS. NO ALUMINUM SHALL BE USED FOR GROUNDING WORK WITHOUT THE SPECIFIC WRITTEN PERMISSION OF THE ENGINEER. EXCEPTION: ALUMINUM BUILDING STRUCTURAL MATERIALS SHALL BE BONDED WITH LISTED ALUMINUM EQUIPMENT WITH ALUMINUM TO COPPER CONNECTORS FOR ROUTING COPPER EGCS.
 - PROVIDE GROUNDING BUSHING ON BOTH ENDS OF ALL SERVICE ENTRANCE RACEWAYS. SIZE AS A GEC [250.80]. THIS INCLUDES RIGID STEEL ELBOWS ON PVC CONDUIT.
 - ALL METAL ENCLOSURES AND RACEWAYS SHALL BE BONDED TO GROUND [250.86]. FOR CIRCUITS OVER 250V PROVIDE BOND PER [250.97]. STANDARD LOCKNUTS ARE NOT ACCEPTABLE.
 - PROVIDE EGC CONNECTED TO ANY JUNCTION BOX WHERE SPLICE IS MADE [250.148].
 - PROVIDE BOND TO EXPOSED METAL ON ALL MOTORS, PUMPS, AND LIGHTING FIXTURES PER [250.112].
 - FOR LIGHTNING PROTECTION SYSTEM, PROVIDE LIGHTNING PROTECTION GROUND RODS LOOPED TOGETHER WITH COPPER CABLE, OTHERWISE BONDING CONDUCTOR WILL ONLY CONNECT TO ONE DOWN CONDUCTOR ROD. VERIFY THAT LIGHTNING PROTECTION DOWN CONDUCTORS ARE BONDED TO LOCAL GROUND METAL TO PREVENT FLASHOVER.

4 GROUNDING DETAIL
E04.01 SCALE: NOT TO SCALE



HUSSEY GAY BELL
— Established 1958 —

| DESIGNED | DRAWN | CHECKED |
|---------------------|-------|---------|
| WRL | WLS | WRL |
| DATE: 05/23/2019 | | |
| JOB NO: 216 4801 01 | | |
| 05/21/19 | | |

EFFINGHAM COUNTY GYMNASIUM
CLARENCE E. MORGAN RECREATION COMPLEX
1750 GA. 21, SPRINGFIELD, GEORGIA 31329

DRAWING NUMBER

E04.01

