

# TERRY WRIGHT PARK IMPROVEMENTS

DESCRIPTION: SIDEWALK, BASKETBALL COURT, ACCESSIBLE PLAYGROUND EQUIPMENT, PLAYGROUND MULCHING & SITE LIGHTNING  
 CIVIL ENGINEERING PLANS - CONSTRUCTION - ISSUED: TBD

M&C COMMISSION NO.: 4397

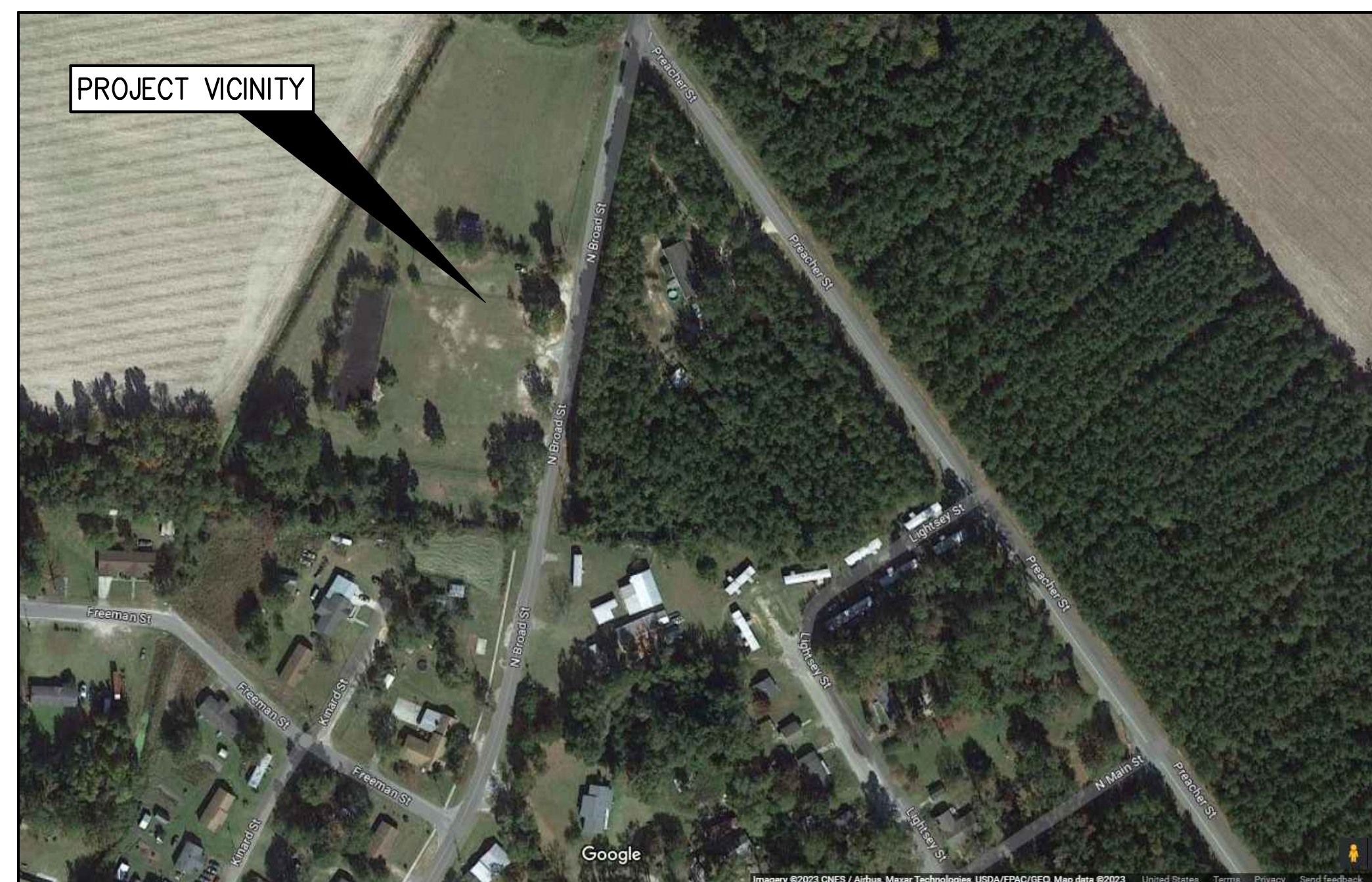
SCO#:

## PROJECT CONTACTS

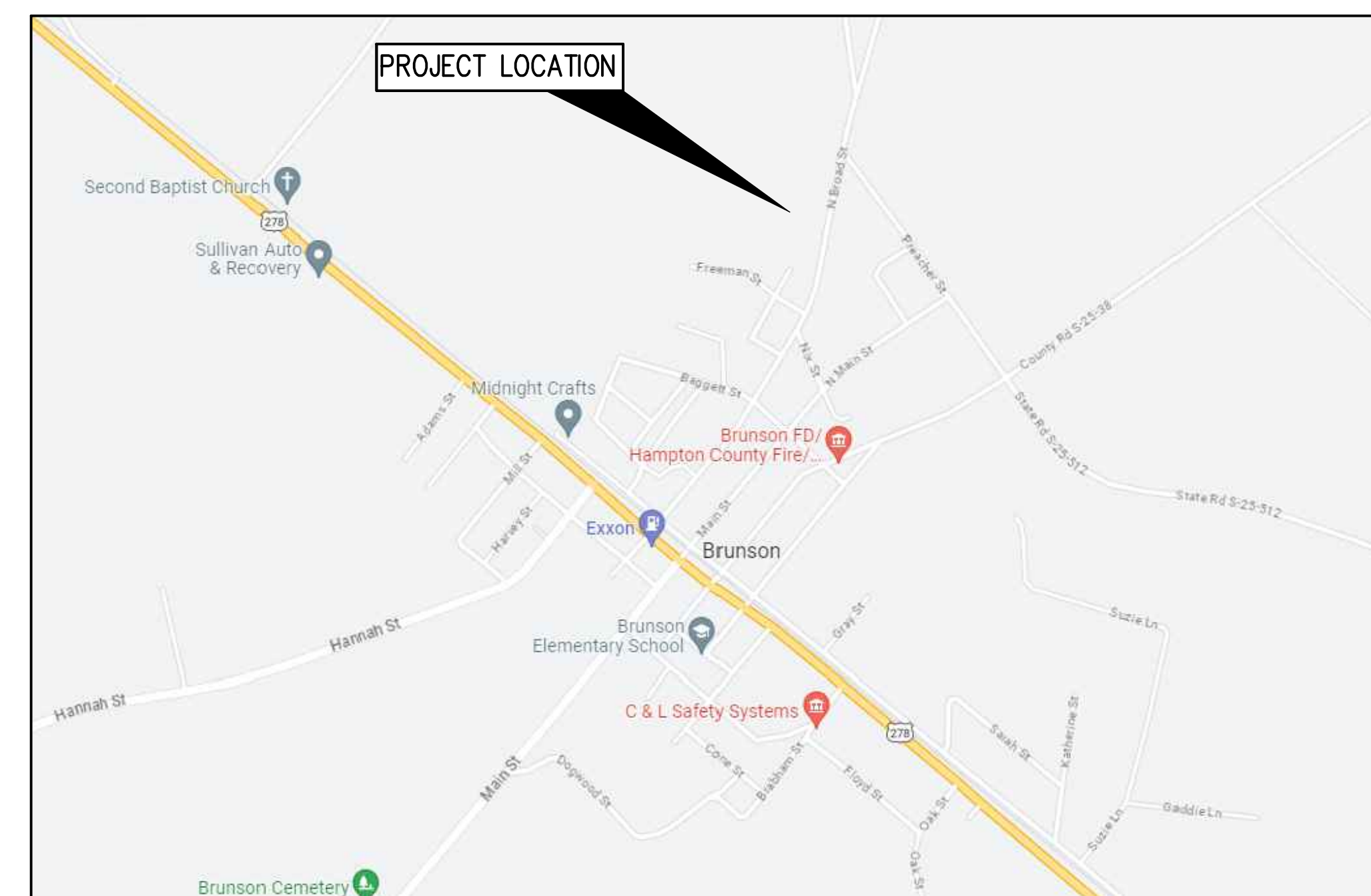
**OWNER:**  
 TOWN OF BRUNSON  
 MS. BARBRA JOHNSON  
 P.O. BOX 98  
 YEMASSEE, SC 29945  
 843-726-5165

**CIVIL ENGINEER:**  
 FOREST MCKENZIE, PE  
 MATTERN & CRAIG, INC.  
 1565 SAM RITTENBERG BLVD. SUITE 101  
 CHARLESTON, SC 29407  
 828-254-2201

**SURVEYOR:**  
 RON ZEITLOW, PE  
 MATTERN & CRAIG, INC.  
 12 BROAD STREET  
 ASHEVILLE, NC 28801  
 828-254-2201



VICINITY MAP

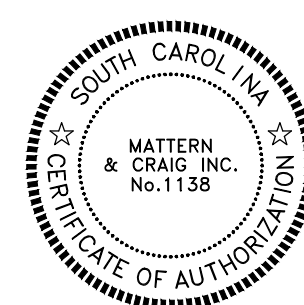


LOCATION MAP

## SHEET LIST

SHEET	TITLE
C0	COVER SHEET
C1	EXISTING CONDITIONS, DEMOLITION & GENERAL NOTES
C2	SITE PLAN AND DETAILS
C3	ACCESSIBLE PLAYGROUND SITE PLAN & DETAILS

**Mattern & Craig**  
 ENGINEERS • SURVEYORS  
 1565 SAM RITTENBERG BLVD, SUITE 101  
 CHARLESTON, SC 29407  
 (843) 225-8391  
 FAX (843) 225-8394



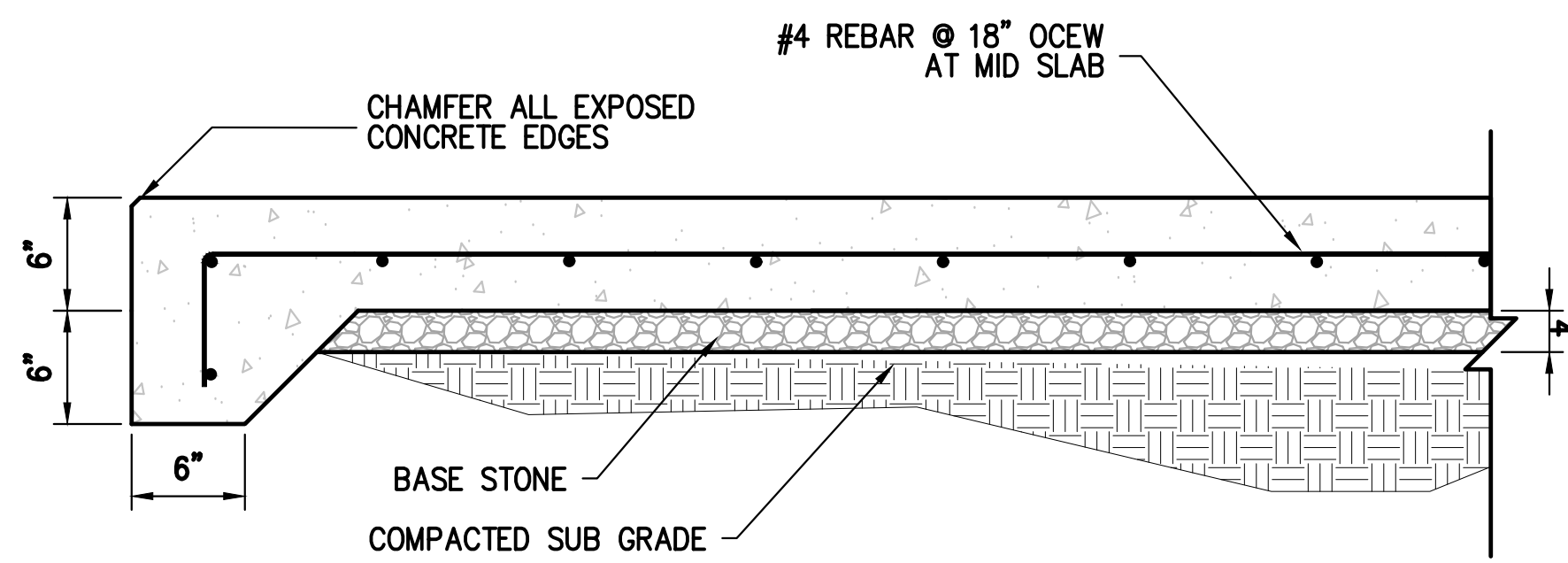
REVISION BLOCK



CONSTRUCTION PLANS

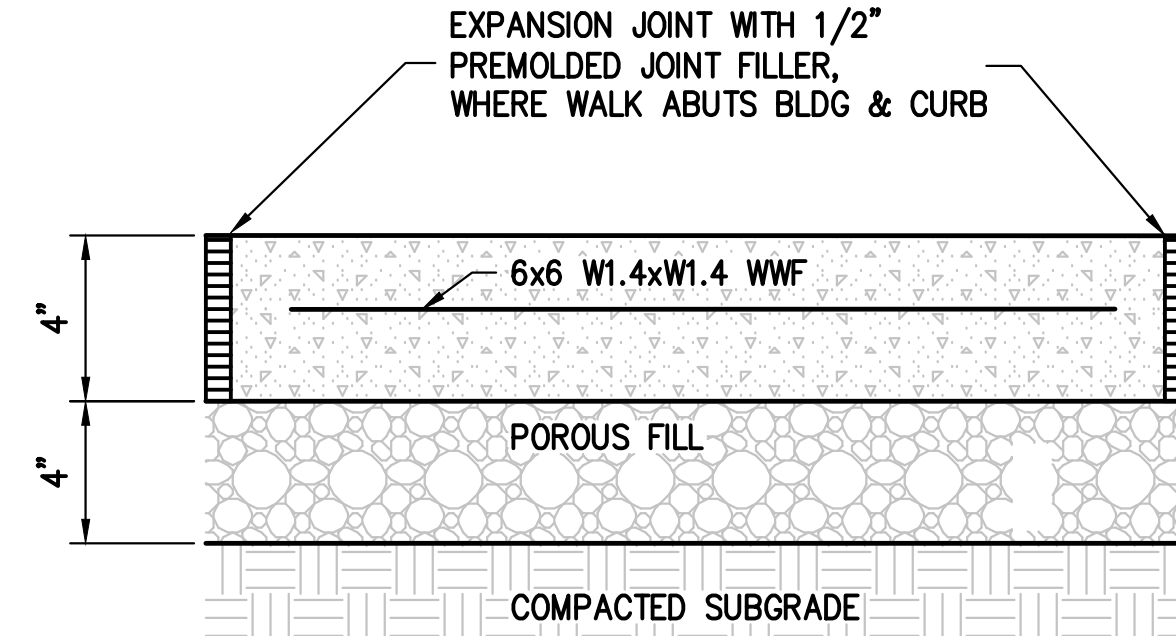
APPROVAL BLOCK





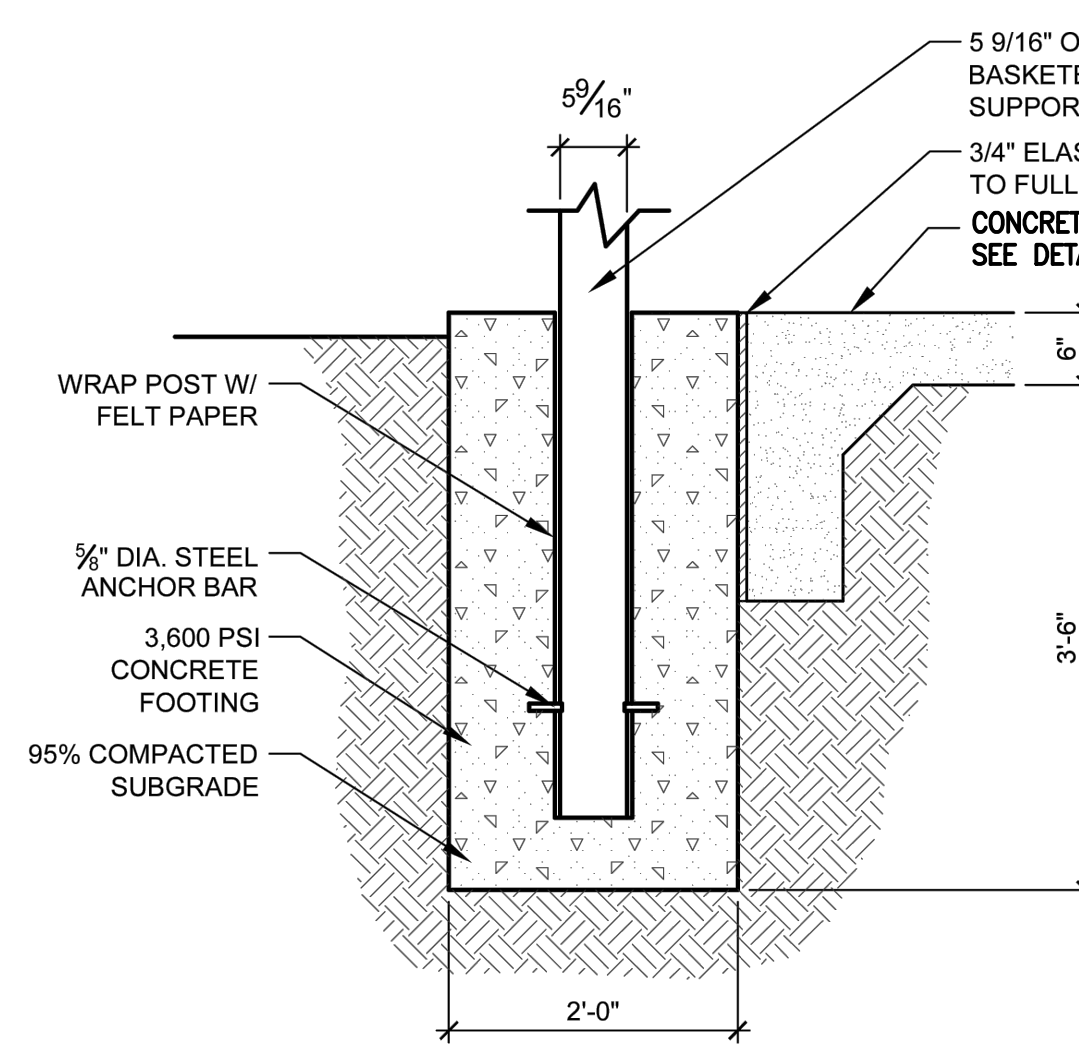
**4000 PSI BASKETBALL COURT CONCRETE PAVEMENT SECTION**  
N.T.S.

NOTE: CONTRACTOR SHALL CONSTRUCT PAD MONOLITHICALLY WITH CONTRACTION JOINTS 1 1/2" DEEP 10' APART..

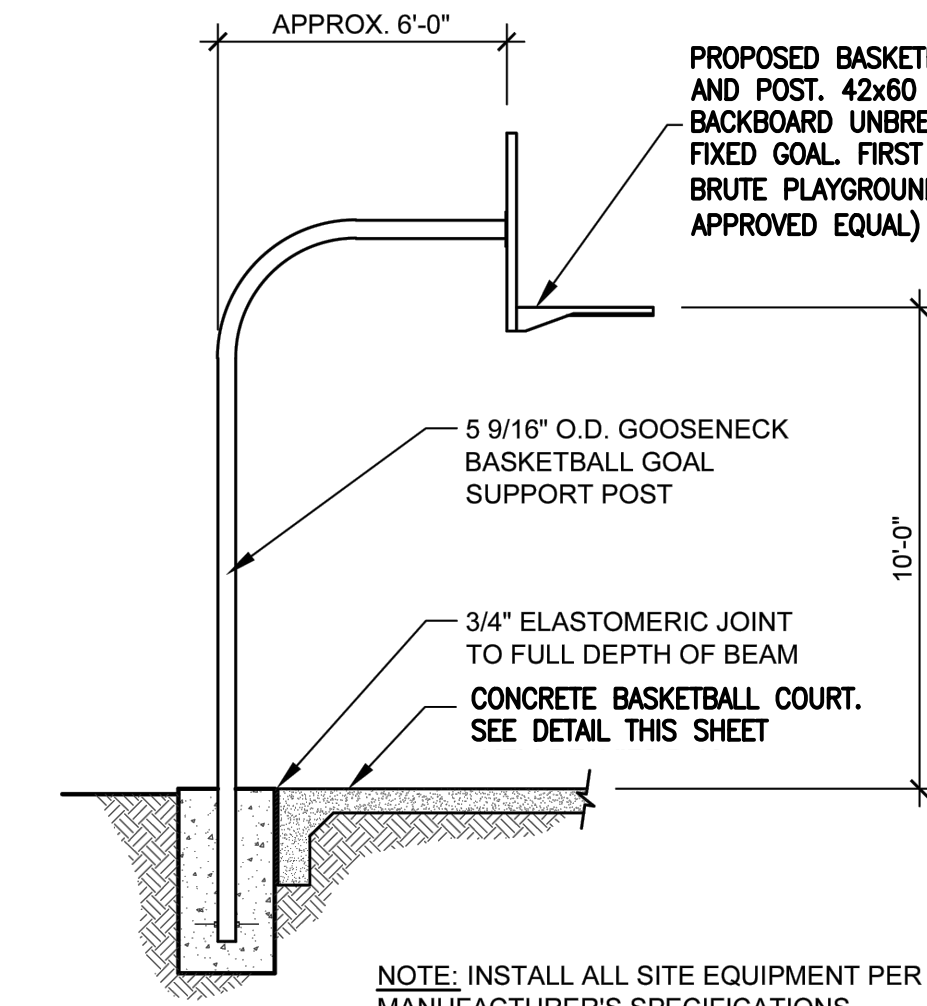


**3000 PSI CONCRETE SIDEWALK SECTION**  
N.T.S.

NOTE: LOCATE CONTRACTION JOINT 1" DEEP, SPACED 5' APART. EXPANSION JOINTS SHALL BE LOCATED EVERY 40' (MAX SPACING)



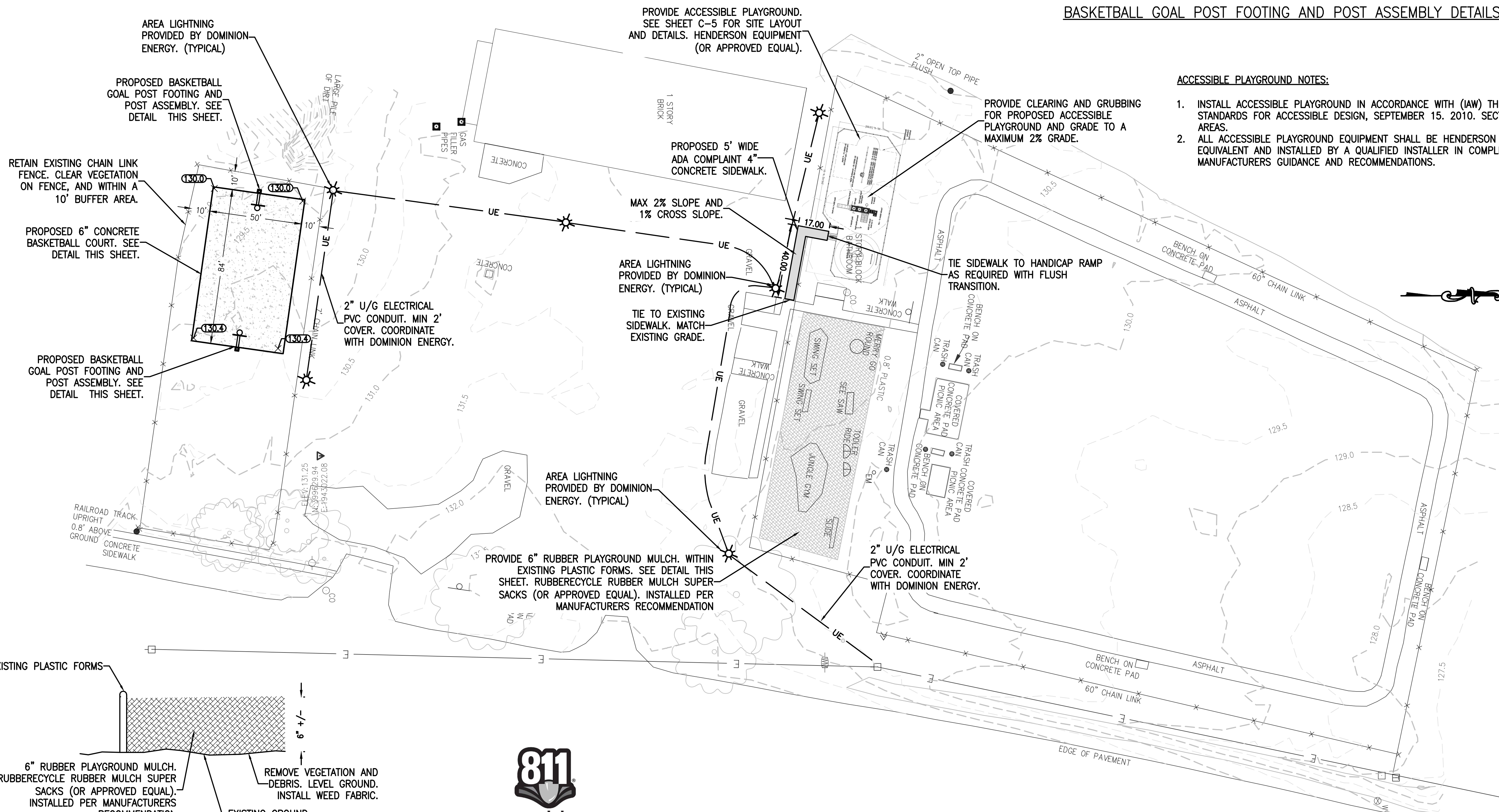
**BASKETBALL GOAL POST FOOTING**  
SCALE: 3/4" = 1'-0"



**BASKETBALL GOAL POST ASSEMBLY**  
SCALE: 1/4" = 1'-0"

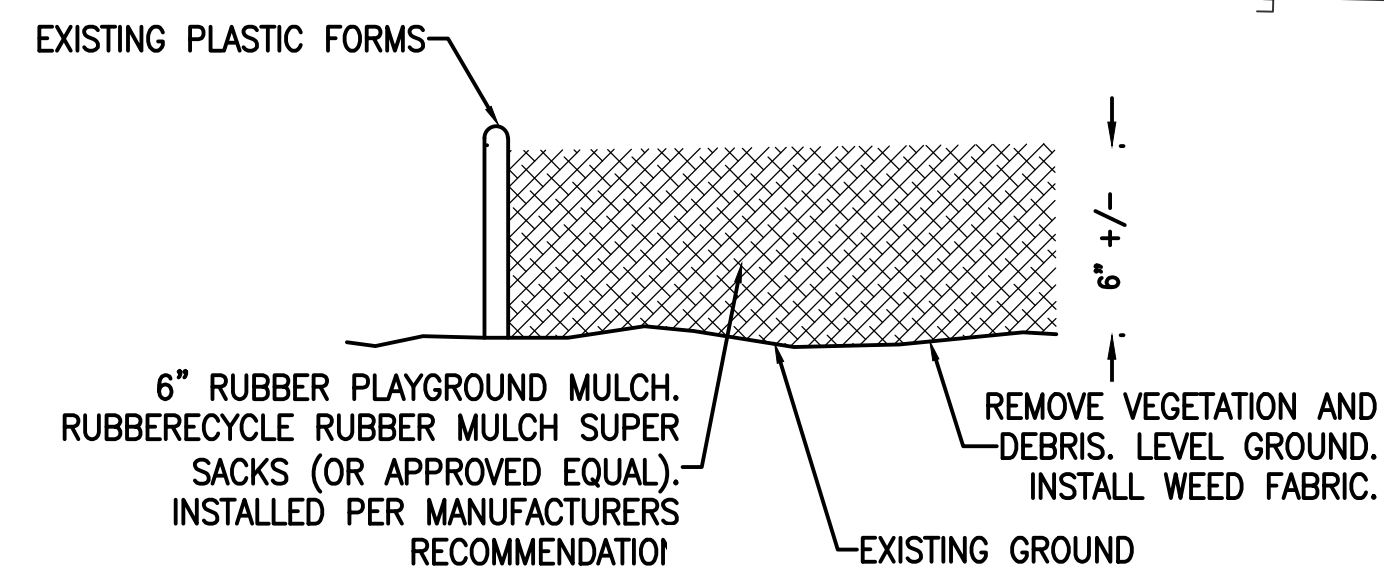
NOTE: INSTALL ALL SITE EQUIPMENT PER MANUFACTURER'S SPECIFICATIONS.

**BASKETBALL GOAL POST FOOTING AND POST ASSEMBLY DETAILS**

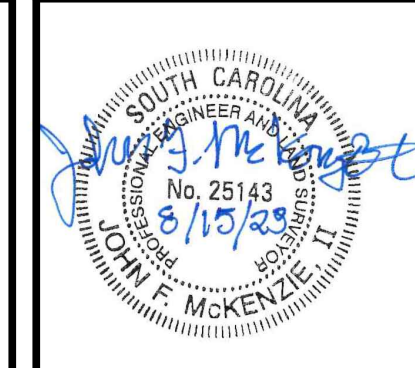
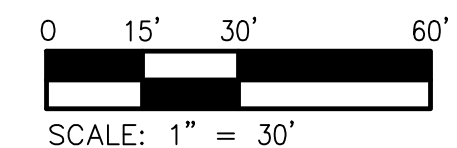


**ACCESSIBLE PLAYGROUND NOTES:**

1. INSTALL ACCESSIBLE PLAYGROUND IN ACCORDANCE WITH (AW) THE 2010 ADA STANDARDS FOR ACCESSIBLE DESIGN, SEPTEMBER 15, 2010. SECTION 1008 PLAY AREAS.
2. ALL ACCESSIBLE PLAYGROUND EQUIPMENT SHALL BE HENDERSON EQUIPMENT OR EQUIVALENT AND INSTALLED BY A QUALIFIED INSTALLER IN COMPLIANCE WITH THE MANUFACTURERS GUIDANCE AND RECOMMENDATIONS.



**PLAYGROUND RUBBER MULCH DETAIL**



Revisions	Date

Issue Date:	Drawn By: BGR	Checked By: A/C
	Designed By: JFM	Date:

**Mattern & Craig**  
ENGINEERS/SURVEYORS  
1565 SAM RITENBERG BLVD, SUITE 101  
CHARLESTON, SC 29407  
(843) 225-8391  
FAX (843) 225-8395

TERRY PARK IMPROVEMENTS  
**SITE PLAN & DETAILS**  
BRUNSON, SC

Vertical Scale: NA  
Horizontal Scale: 1"=30'  
Commission Number: 4397  
Sheet No.: **C2**

