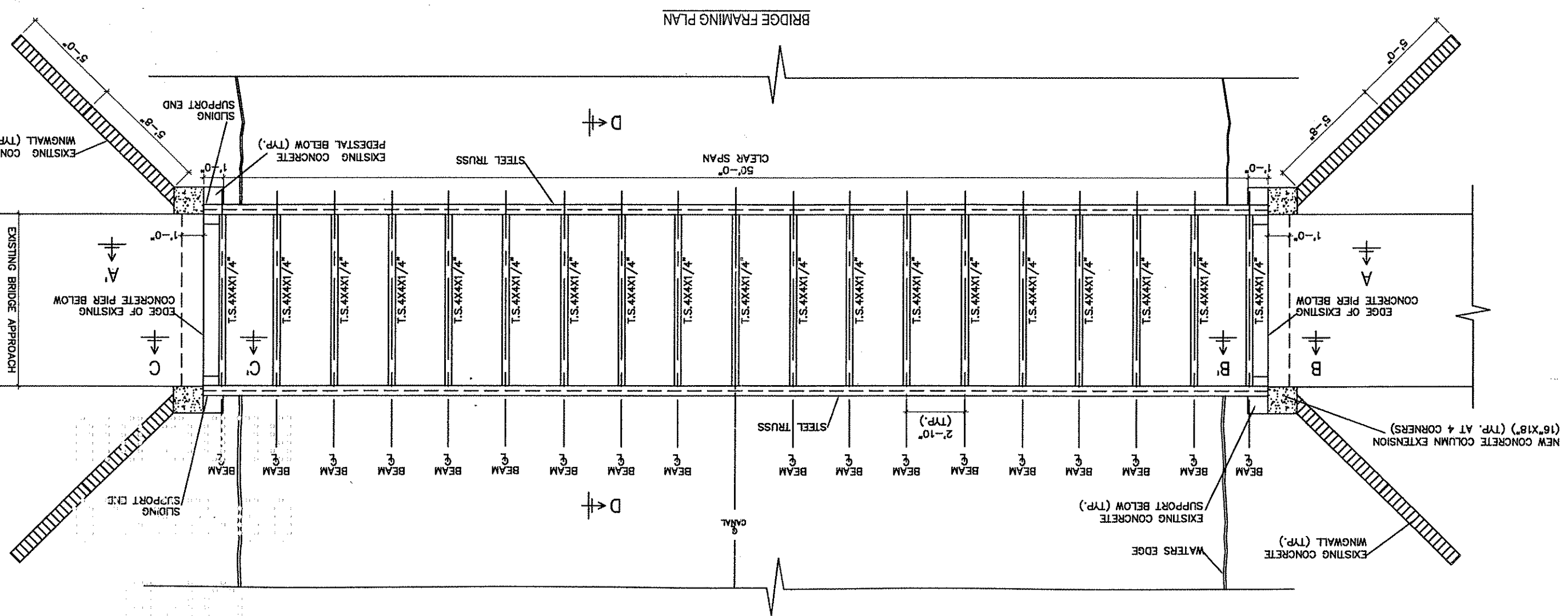
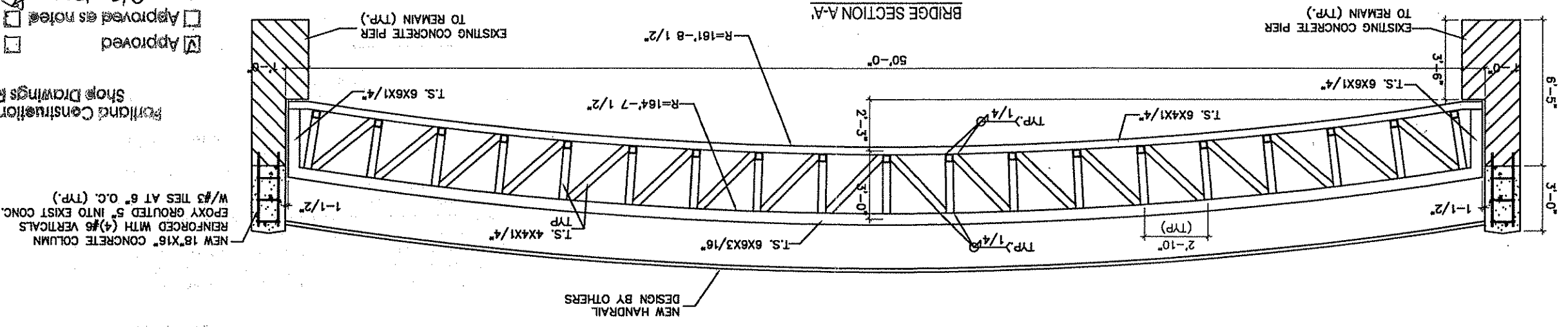


Portland Construction Company
 Shop Drawings Review
 Approved
 Rejected
 Approved as noted
 Revised/Resubmitted
 Date: 9/24/2019

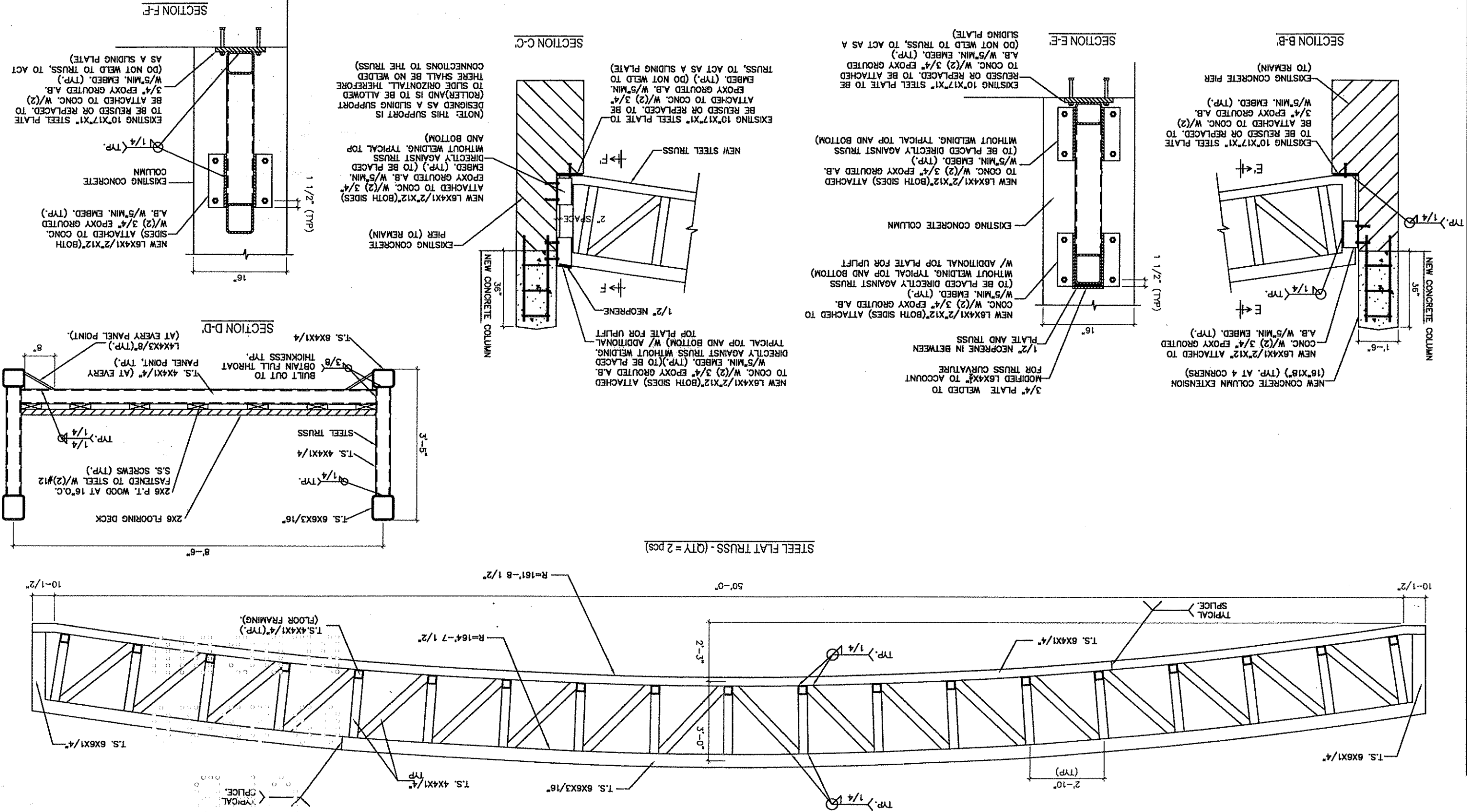


NEW 18"X16" CONCRETE COLUMN
 REINFORCED WITH (4)#6 VERTICALS
 EPOXY GROUTED 5" INTO EXIST CONC.
 W/#3 TIES AT 6" O.C. (TYP.)

NEW HANDRAIL
 DESIGN BY OTHERS

NEW CONCRETE COLUMN EXTENSION
 (16"X18") (TYP. AT 4 CORNERS)

EXISTING CONCRETE
 SUPPORT BELOW (TYP.)



BLD 2010-0713

7895 SW 1525

RUSH

OFFICE COPY

THIS COPY OF PLAN MUST BE AVAILABLE ON BUILDING SITE OR NO INSPECTION WILL BE GIVEN

APPROVED

SECTION BY DATE

ZONING

LANDSCAPING

PUBLIC WORKS

BUILDING

STAIRS

HANDICAP

STRUCTURAL

ELECTRICAL

PLUMBING

MECHANICAL

EMERGENCY

FIRE

SHOP DRAWING REVIEW

- Reviewed
- Rejected
- Revise and Resubmit
- Furnish as Noted

Corrections or comments made on the shop drawings during this review do not relieve contractor from compliance with requirements of the drawings, specifications, and with the contract documents. This check is only for review of general conformance with the design concept of the project and general conformance with the information given in the contract documents. The contractor is responsible for confirming and correcting all quantities and dimensions; selecting fabrication processes and techniques of construction; coordinating the work with that of all other trades; and performing the work in a safe and satisfactory manner.

Project No. _____
 Submittal No. _____
 By: *[Signature]*