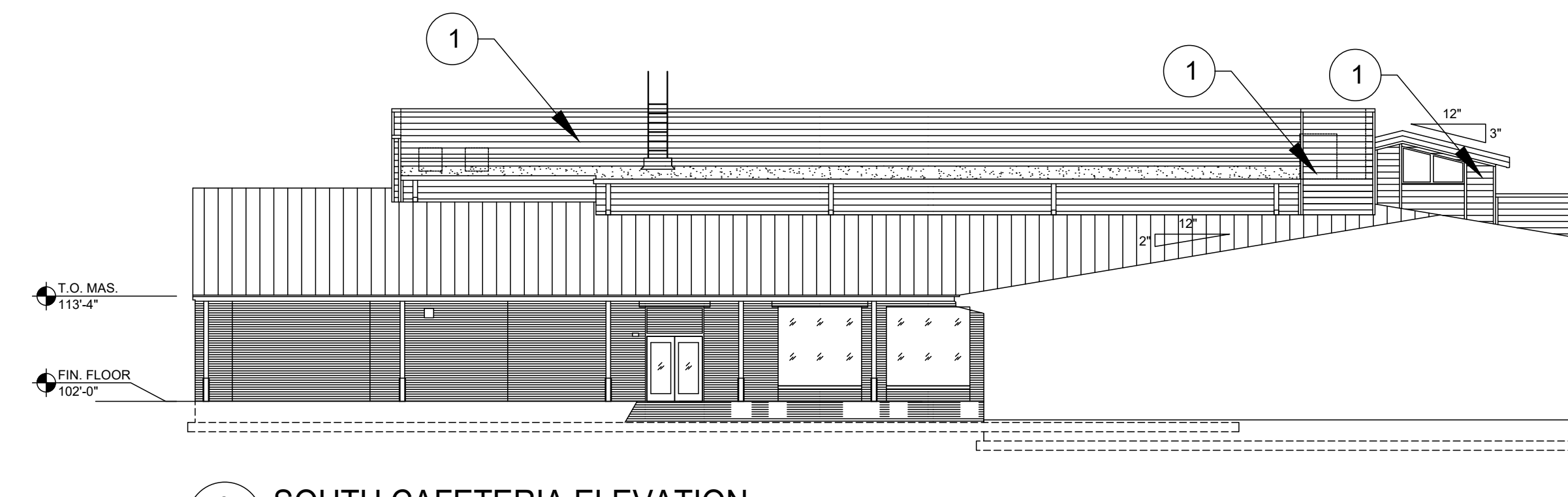
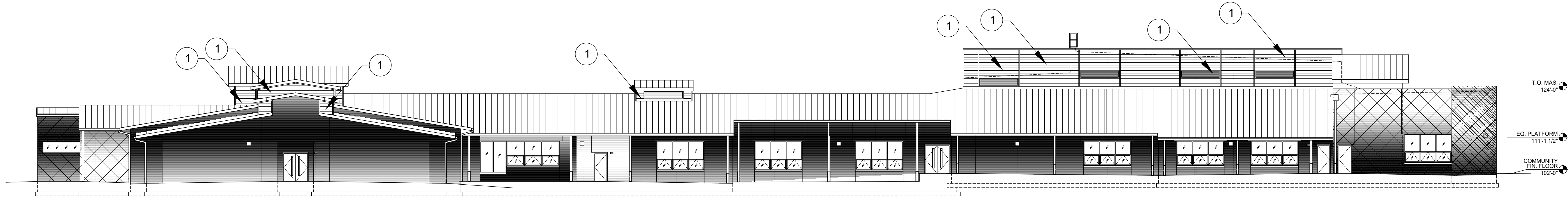


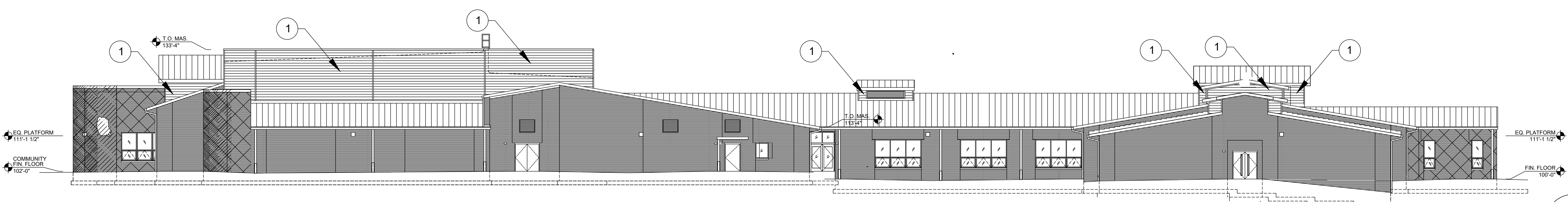
1 SOUTH ELEVATION
Scale: NTS



2 SOUTH CAFETERIA ELEVATION
Scale: NTS



3 EAST ELEVATION
Scale: NTS

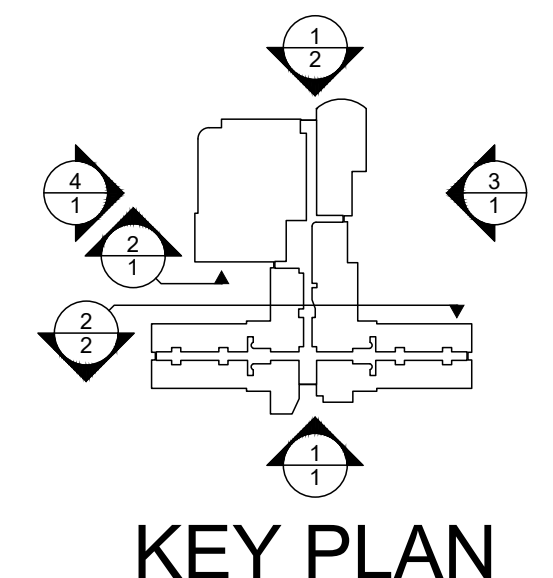


4 WEST ELEVATION
Scale: NTS

Tag Notes: (x)

- 1 SW 6907 "Yellow"
- 2 SW 6839 "Purple"

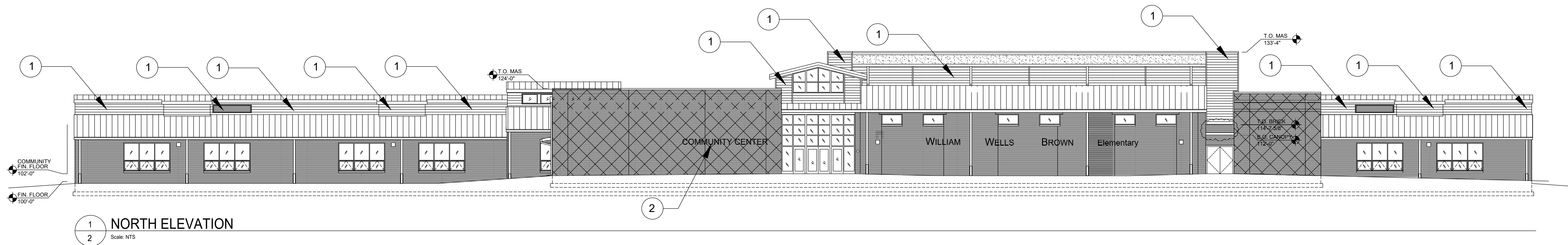
Sherwin Williams colors are the basis of selection.
See Sheet 2 for "General Notes"



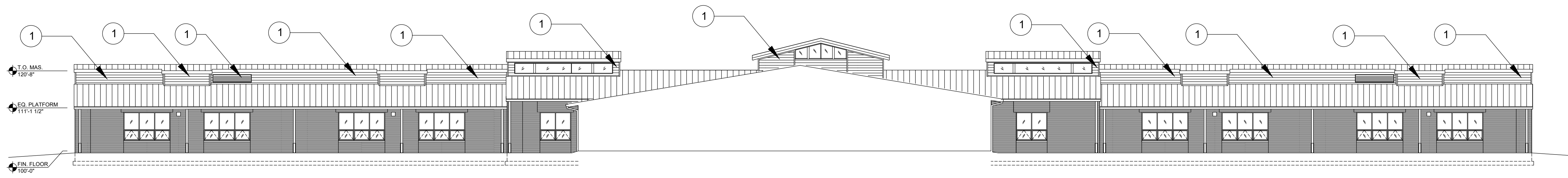
FD&C
FAYETTE COUNTY PUBLIC SCHOOLS
Sheet
1

5/25/23
Elevation Views
Exterior Metal Panel Painting
William Wells Brown

Revision



1 NORTH ELEVATION
2 Scale: NTS



2 NORTH VIEW OF ACADEMIC WINGS
2 Scale: NTS

General Notes:

GENERAL

- A. Three (3) coats of paint are to be applied to surface.
 1. Prime Coat: Epoxy metal primer
 2. Intermediate Coat: Matching topcoat.
 3. Topcoat: Exterior, water-based, light industrial coating, semigloss.
- B. Contractor to provide all equipment needed to reach areas of work as shown on the drawings.
- C. Communicate with School staff to have cars removed from work areas to prevent over spray from paint application of building surfaces.
- D. Provide a paint sample of both colors (Sherwin Williams: SW 6907 & SW 6839)
- E. Provide an 8"x8" sample of the yellow and purple colors called out.

FIELD CONDITIONS

- A. Apply paints only when temperature of surfaces to be painted and ambient air temperatures are between 50 and 95 deg F.
- B. Do not apply paints in snow, rain, fog, or mist; when relative humidity exceeds 85 percent; at temperatures less than 5 deg F above the dew point; or to damp or wet surfaces.

EXAMINATION

- A. Verify suitability of substrates, including surface conditions and compatibility, with finishes and primers.
- B. Proceed with coating application only after unsatisfactory conditions have been corrected.
- C. Application of coating indicates acceptance of surfaces and conditions.
- D. Evaluate caulk on building and replace any defects. Review this with owner representative before proceeding with this work. Provide unit pricing for caulk work.

PREPARATION

- A. Comply with manufacturer's written instructions and recommendations in "MPI Architectural Painting Specification Manual" applicable to substrates indicated.
- B. Wash or wipe down surfaces being painted.
- C. Scrape and sand loose and peeling paint.

- D. Spot priming metal in areas being painted.
- E. Clean substrates of substances that could impair bond of paints, including dirt, oil, grease, and incompatible paints and encapsulants.
 - a. Remove incompatible primers and reprime substrate with compatible primers as required to produce paint systems indicated.
- F. Galvanized-Metal Substrates: Remove grease and oil residue from galvanized sheet metal fabricated from coil stock by mechanical methods to produce clean, lightly etched surfaces that promote adhesion of subsequently applied paints.

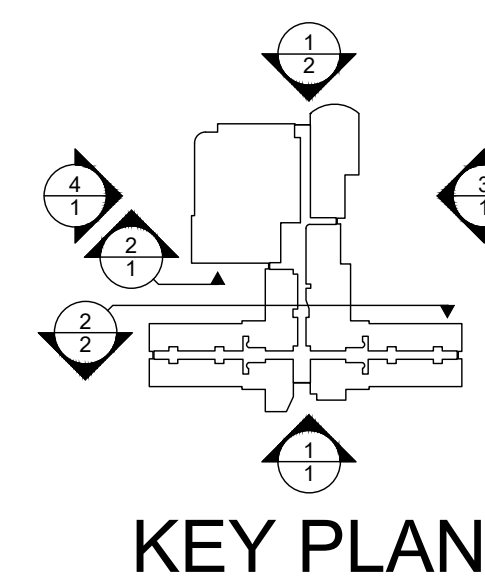
CLEANING AND PROTECTION

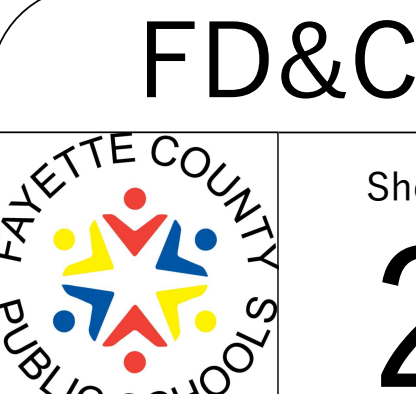

- A. At end of each workday, remove rubbish, empty cans, rags, and other discarded materials from Project site.
 4. Do not clean equipment with free-draining water and prevent solvents, thinners, cleaners, and other contaminants from entering into waterways, sanitary and storm drain systems, and ground.
 5. Dispose of contaminants in accordance with requirements of authorities having jurisdiction.
 6. Allow empty paint cans to dry before disposal.
 7. Collect waste paint by type and deliver to recycling or collection facility.
- B. After completing paint application, clean spattered surfaces. Remove spattered paints by washing, scraping, or other methods. Do not scratch or damage adjacent finished surfaces.
- C. Protect work of other trades against damage from paint application. Correct damage to work of other trades by cleaning, repairing, replacing, and refinishing, as approved by Owner representative, and leave in an undamaged condition.
- D. At completion of construction activities of other trades, touch up and restore damaged or defaced painted surfaces.

Tag Notes:

- 1 SW 6907 "Yellow"
- 2 SW 6839 "Purple"

Sherwin Williams colors are the basis of selection.



	5/25/23	Elevation Views
	Exterior Metal Panel Painting	
	Sheet 2	William Wells Brown

Revision
