

# CURRY COUNTY ADULT DETENTION CENTER

## 100% CONSTRUCTION DOCUMENTS

### AUGUST 17, 2023

#### LOCATION MAP



#### PROJECT INFORMATION

OWNER: CURRY COUNTY  
OWNER ADDRESS: 417 GIDDING ST., SUITE 100  
CLOVIS, NM 88101  
PROJECT ADDRESS: 801 MITCHELL ST.  
CLOVIS, NM 88101

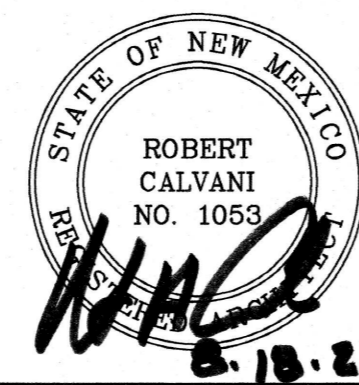
#### SCOPE OF WORK

THIS PROJECT CONSISTS OF REMOVING AND REPLACING EXISTING DETENTION CENTER CELL DOORS WITH UPDATED SLIDER DOORS. THESE DOORS AND FRAME SYSTEMS WILL BE INSTALLED WITH SECURITY GLASS. LAST PANEL OF FRAME SYSTEM WILL CONCLUDE WITH STEEL PLATE FINISH.

#### INDEX TO DRAWINGS

G-001 COVER SHEET  
GENERAL INFORMATION  
G-101 GENERAL INFORMATION  
ARCHITECTURAL  
AD-100 OVERALL FIRST FLOOR DEMOLITION PLAN  
AD-101 FIRST FLOOR DEMOLITION PLAN  
AD-102 MEZZANINE LEVEL DEMOLITION PLAN  
A-100 OVERALL NEW FIRST FLOOR PLAN  
A-101 NEW FIRST FLOOR PLAN  
A-102 NEW MEZZANINE LEVEL PLAN  
A-621 DOOR AND FRAME TYPES, GLAZING TYPES, AND DOOR SCHEDULE

#### VICINITY MAP



1306 RIO GRANDE BLVD NW  
ALBUQUERQUE, NM 87104  
505-255-6400 505-268-6954 FAX  
WWW.NCA-ARCHITECTS.COM

SET NO.:

PROJECT: A2221



# ABBREVIATIONS

## SYMBOLS USED AS ABBREVIATIONS:

∠	ANGLE	INSIDE DIAMETER	ID
⊕	CENTERLINE	INSULATION	INSUL
[ c	CHANNEL	INTERIOR	INT
d	PENNY	JOINT	JT
⊥	PERPENDICULAR	JOIST	JST
∅	ROUND/DIAMETER	KNOCKOUT	KO
⊕	SQUARE FEET	LAMINATE(D)	LAM
@	AT	LAVATORY	LAV

## ABBREVIATIONS:

ABOVE FINISHED FLOOR	AFF	MANUFACTURE(R)	MFR
ACCESS FLOOR	ACS FLR	MARKER BOARD	MB
ACCESSIBLE	ACC	MASONRY	MAS
ACOUSTICAL	ACOUS	MASONRY OPENING	MO
AMERICAN DISABILITIES ACT	ADA	MATERIAL(S)	MATL
AGGREGATE	AGGR	MAXIMUM	MAX
ARCHITECT(URAL)	ARCH	MECHANICAL	MECH
BEAM	BM	METAL BUILDING MANUFACTURER	MBM
BEARING	BRG	METAL THRESHOLD	MTL
BELOW FINISHED FLOOR	BFF	MINIMUM	MIN
BENCHMARK	BM	MISCELLANEOUS	MISC
BOARD	BD	MUD MAT	MM
BOTTOM	BOT	NOMINAL	NOM
BOTTOM OF STEEL	BOS	NOT IN CONTRACT	NIC
BUILDING	BLDG	NOT TO SCALE	NTS
CARPET	CPT	ON CENTER(S)	OC
CAST IRON	CI	OPPOSITE	OPP
CEILING	CLG	OPPOSITE HAND SIMILAR	OHS
CERAMIC	CER	OUTSIDE DIAMETER	OD
CHALK BOARD	CH BD	OWNER FURNISHED/CONTRACTOR INSTALLED	OF/CI
COLUMN	COL	PLASTER	PLAS
CONCRETE	CONC	PLATE	PL
CONCRETE MASONRY UNIT	CMU	PLYWOOD	PLYWD
CONSTRUCTION	CONSTR	POINT	PT
CONTINUOUS OR CONTINUE	CONT	POLYVINYL CHLORIDE	PVC
CONTROL JOINT	CJ	POUNDS PER CUBIC FOOT	PCF
CORRIDOR	CORR	POUNDS PER LINEAL FOOT	PLF
DETAIL	DET	POUNDS PER SQUARE FOOT	PSF
DIAMETER	DIA	POUNDS PER SQUARE INCH	PSI
DIMENSION	DIM	QUARRY TILE	QT
DOWN	DN	REQUIRE(D)	REQ(D)
DRINKING FOUNTAIN	DF	RETURN AIR	RA
ELECTRIC(AL)	ELEC	RIGHT OF WAY	ROW
ELECTRIC WATER COOLER	EWG	ROOF DRAIN	RD
ELEVATION	EL	ROOF LEADER	RL
EXISTING	EXIST	ROUGH OPENING	RO
EXPANSION JOINT	EJ	SECTION	SECT
EXPOSED	EXP	SERVICE SINK	SERV SK
EXTERIOR	EXT	SHEATHING	SHTHG
EXTERIOR INSULATION & FINISH SYSTEM	EIFS	SIMILAR	SIM
FACE OF CONCRETE	FOC	SOLID CORE	SC
FACE OF MASONRY	FOM	SPECIFICATION(S)	SPEC
FACE OF STUD	FOS	SQUARE	SQ
FACE OF SHEATHING	FOSHTHG	SQUARE FEET	SF or SQ FT
FINISH(ED)	FIN	STRUCTURAL	STRUCT
FINISH FLOOR	FIN FLR	SUSPENDED	SUSP
FIRE EXTINGUISHER (CABINET)	FE(C)	SYNTHETIC	SYNTH
FLOOR CLEAN OUT	FCO	TACKBOARD	TKBD
FLOOR	FLR	TONGUE & GROOVE	T&G
FLOORING	FLG	TOP OF FOOTING	TOF
FOOTING	FTG	TOP OF MASONRY	TOM
GALVANIZED IRON	GI	TOP OF SLAB (OR STEEL)	TOS
GAUGE	GA	TOP OF STUD WALL	TOSW
GENERAL CONTRACT(OR)	GC	VINYL COMPOSITION TILE	VCT
GLASS, GLAZING	GL	VERTICAL	VERT
GLAZED CONCRETE MASONRY UNIT	GLZ CMU	WATER CLOSET	WC
GYP	GYP	WATER HEATER	WH
HANDICAP	HC	WELDED WIRE FABRIC	WWF
HARDWARE	HDW		
HARDWOOD	HDWD		
HEATING/VENTILATION/AIR CONDITIONING	HVAC		
HEIGHT	HT		
HOLLOW CORE	HC		
HOLLOW METAL	HM		
HORIZONTAL	HORIZ		
HOSE BIBB	HB		

# MATERIAL INDICATIONS

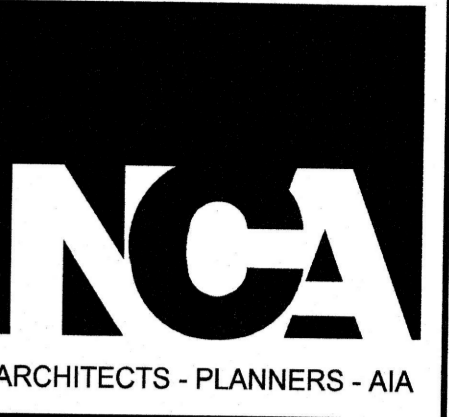
	EARTH		SAND
	CONCRETE		GRAVEL
	BRICK		WOOD (FINISH)
	CONCRETE BLOCK		WOOD (THROUGH MEMBER)
	STEEL		WOOD (INTERRUPTED MEMBER)
	BATT INSULATION		GYPSON BOARD
	RIGID INSULATION or CABINETRY		PLYWOOD
			CEILING TILE
			PARTICLE BOARD

# GENERAL NOTES:

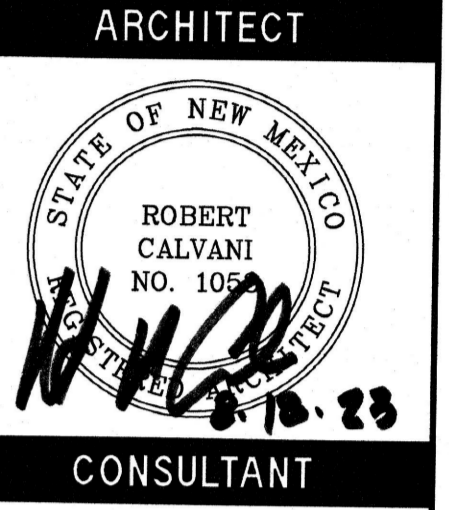
- THE CONTRACTOR IS TO FIELD VERIFY ALL DIMENSIONS AND CONDITIONS OF EXISTING SITE CONDITIONS, AND REPORT ANY INCONSISTENCIES TO THE ARCHITECT.
- ALL ACTIVE PIPING, EQUIPMENT, ETC., SERVING FIXTURES AND EQUIPMENT TO REMAIN SHALL BE RELOCATED AS NECESSARY WHEN CONTAINED IN EXISTING CONSTRUCTION TO BE REMOVED.
- ALL ACTIVE ELECTRICAL WIRING, EQUIPMENT, ETC., SERVING LIGHTING, POWER, ETC., TO REMAIN SHALL BE RELOCATED AS NECESSARY WHEN CONTAINED IN EXISTING CONSTRUCTION TO BE REMOVED.
- ALL WIRING, PIPING, AND EQUIPMENT FOR MECHANICAL OR ELECTRICAL USES WHICH HAVE BEEN, OR ARE TO BE ABANDONED SHALL BE REMOVED AND CAPPED OFF AS NECESSARY TO CONCEAL ALL REMAINING ELEMENTS WITHIN THE CONSTRUCTION TO REMAIN.

# SYMBOLS

	<b>A1 FLOOR PLAN</b>	DRAWING TITLE
	0 4' 8' 16'	SCALE: 1/8" = 1'-0"
	BOLD LINE INDICATES NORTH	NORTH ARROW
	SECTION OR DETAIL NUMBER SHEET WHERE DRAWN	DETAIL CALLOUT
	SECTION/ELEVATION NUMBER SHEET WHERE DRAWN	SECTION OR EXTERIOR ELEVATION MARKER
	ELEVATION NUMBER SHEET WHERE DRAWN	INTERIOR ELEVATION MARKER
	ELEVATION NUMBER SHEET WHERE DRAWN	MULTIPLE INTERIOR ELEVATION MARKER
		KEYNOTE
	ROOM NAME ROOM NUMBER	ROOM NAME AND NUMBER
		DOOR IDENTIFICATION
		WINDOW/FRAME IDENTIFICATION
		EQUIPMENT OR FIXTURE IDENTIFICATION
		INTERIOR PARTITION TYPE
		REVISION IDENTIFICATION
	ROOM AREA OCCUPANT LOAD FACTOR OCCUPANT LOAD	CODE INFORMATION
		STRUCTURAL GRID IDENTIFICATION
	100'-0" BRG. HT.	ELEVATION TARGET
	100'-6" FIN. FLR. 100'-0" FIN. FLR.	CHANGE IN LEVEL



1306 RIO GRANDE BLVD NW  
ALBUQUERQUE, NM 87104  
505-255-6400 505-268-6964 FAX  
WWW.NCA-ARCHITECTS.COM



## PROJECT TITLE

**CURRY COUNTY  
ADULT  
DETENTION  
CENTER DOOR  
AND HARDWARE  
REPLACEMENT**

**CLOVIS  
NEW MEXICO**

## REVISIONS:

MK	DATE	DESCRIPTION

DRAWN BY: CHECKED BY:

AM JL

PROJECT NUMBER:  
A22.21

DATE:  
AUGUST 2023

SHEET TITLE:

**GENERAL  
INFORMATION**

SHEET NO.:

**G-101**

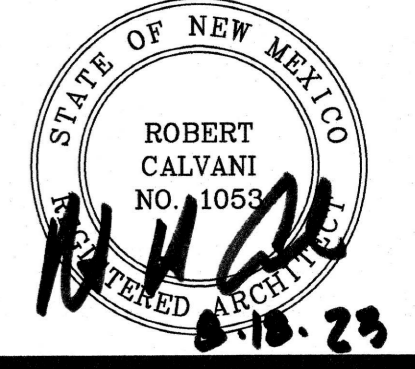




ARCHITECTS - PLANNERS - AIA

1306 RIO GRANDE BLVD NW  
ALBUQUERQUE, NM 87104  
505-255-6400 505-268-6954 FAX  
WWW.NCA-ARCHITECTS.COM

ARCHITECT



CONSULTANT

PROJECT TITLE

### CURRY COUNTY ADULT DETENTION CENTER DOOR AND HARDWARE REPLACEMENT

CLOVIS  
NEW MEXICO

REVISIONS:

MK	DATE	DESCRIPTION

DRAWN BY: CHECKED BY:

AM JL

PROJECT NUMBER:

A22.21

DATE:

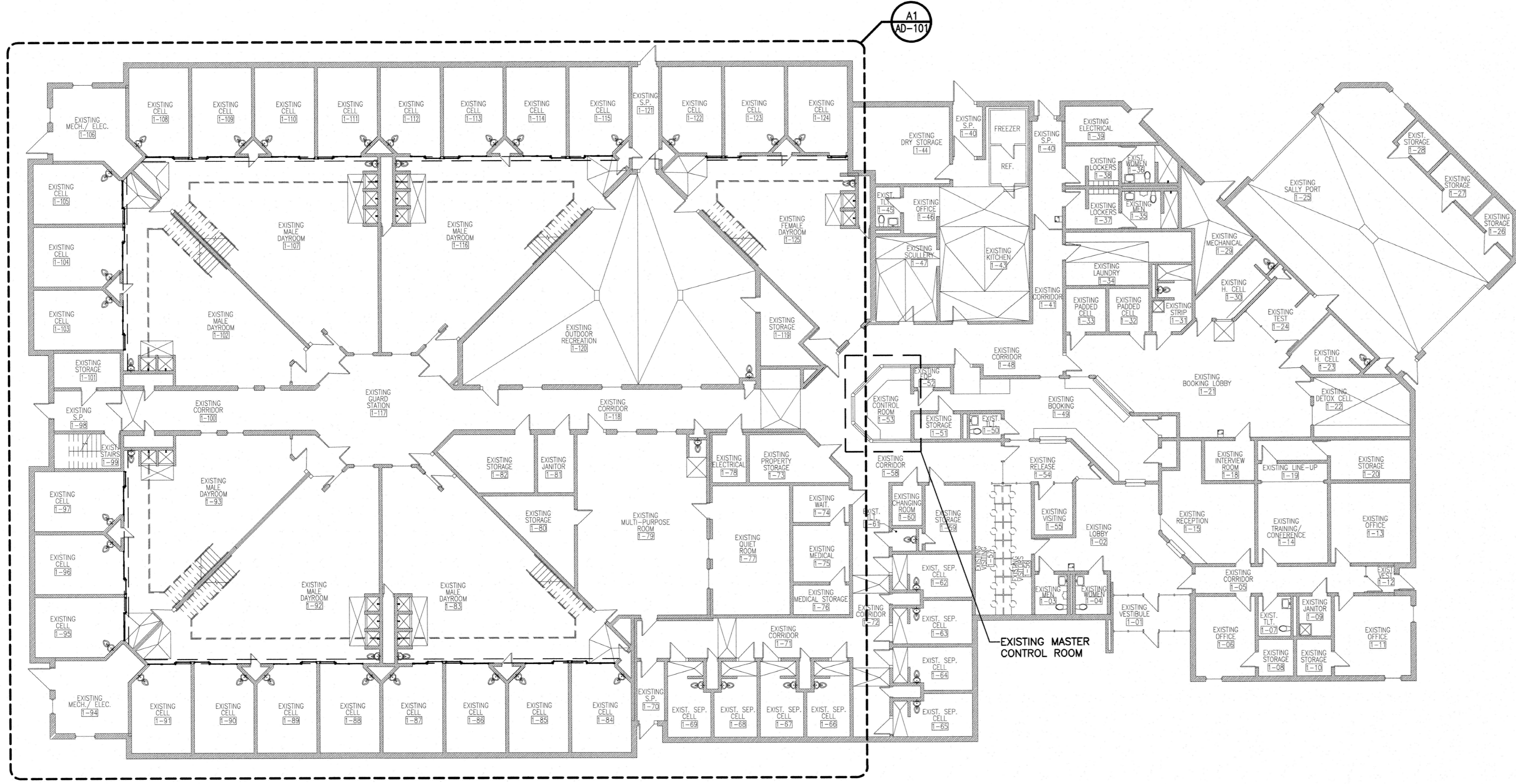
AUGUST 2023

SHEET TITLE:

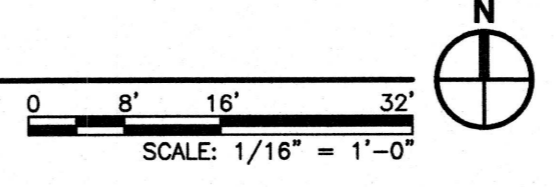
**OVERALL FIRST  
FLOOR DEMOLITION  
PLAN**

SHEET NO:

**AD-100**



**A1 OVERALL FIRST FLOOR DEMOLITION PLAN**





**GENERAL NOTES**

A. CONTRACTOR TO FIELD VERIFY ALL EXISTING CONDITIONS.

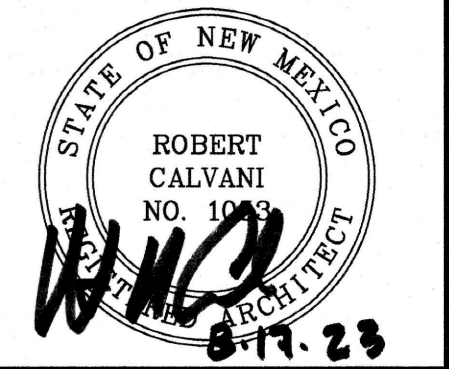
**KEYED NOTES**

- 1. REMOVE AND PROPERLY DISPOSE OF EXISTING SECURITY DOORS AND FRAMES, PREP OPENING FOR NEW DOOR AND FRAME.
- 2. EXISTING ELECTRIC HOUSING ABOVE TO REMAIN. PROTECT AND NOTE WIRING USAGE.



1306 RIO GRANDE BLVD NW  
ALBUQUERQUE, NM 87104  
505-255-6400 505-288-6954 FAX  
WWW.NCA-ARCHITECTS.COM

ARCHITECT



CONSULTANT

**PROJECT TITLE**

**CURRY COUNTY  
ADULT  
DETENTION  
CENTER DOOR  
AND HARDWARE  
REPLACEMENT**

**CLOVIS  
NEW MEXICO**

**REVISIONS:**

MK	DATE	DESCRIPTION

DRAWN BY: CHECKED BY:

AM JL

PROJECT NUMBER:

A22.21

DATE:

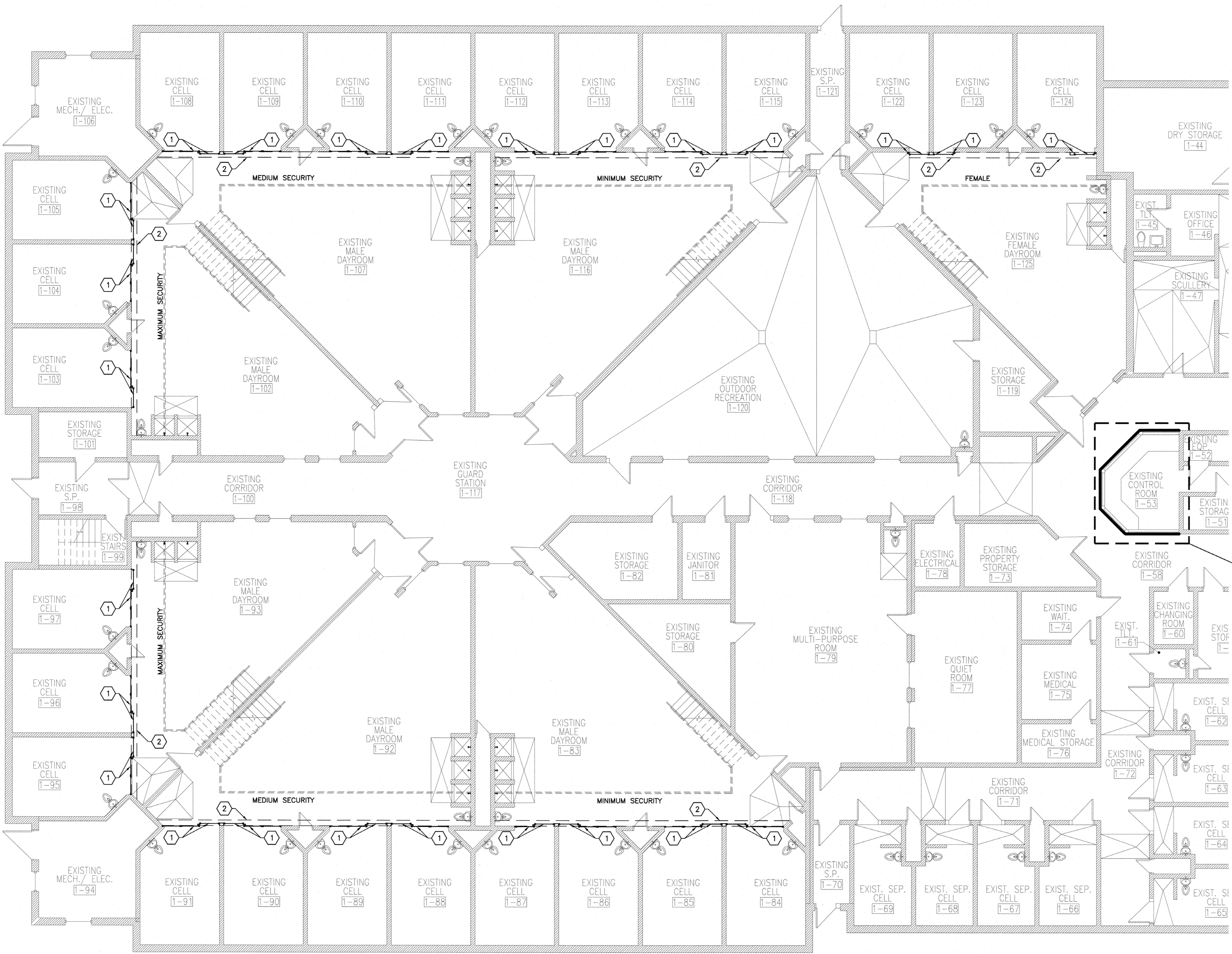
AUGUST 2023

SHEET TITLE:

**FIRST FLOOR  
DEMOLITION  
PLAN**

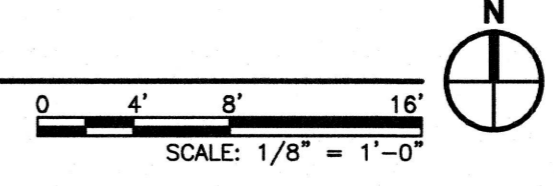
SHEET NO:

**AD-101**



EXISTING MASTER CONTROL ROOM

**A1 FIRST FLOOR DEMOLITION PLAN**





**GENERAL NOTES**

A. CONTRACTOR TO FIELD VERIFY ALL EXISTING CONDITIONS.

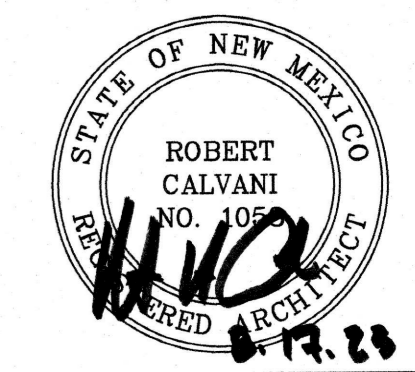
**KEYED NOTES**

1. REMOVE AND PROPERLY DISPOSE OF EXISTING SECURITY DOORS AND FRAMES. PREP. AREA FOR NEW DOORS AND FRAMES.
2. EXISTING ELECTRIC HOUSING ABOVE TO REMAIN. PROTECT AND NOTE WIRING USAGE.



1306 RIO GRANDE BLVD NW  
ALBUQUERQUE, NM 87104  
505-255-6400 505-268-6954 FAX  
WWW.NCA-ARCHITECTS.COM

ARCHITECT



CONSULTANT

PROJECT TITLE

**CURRY COUNTY  
ADULT  
DETENTION  
CENTER DOOR  
AND HARDWARE  
REPLACEMENT**

**CLOVIS  
NEW MEXICO**

REVISIONS:

NO.	DATE	DESCRIPTION

MK DATE DESCRIPTION

DRAWN BY: CHECKED BY:

AM JL

PROJECT NUMBER:

A22.21

DATE:

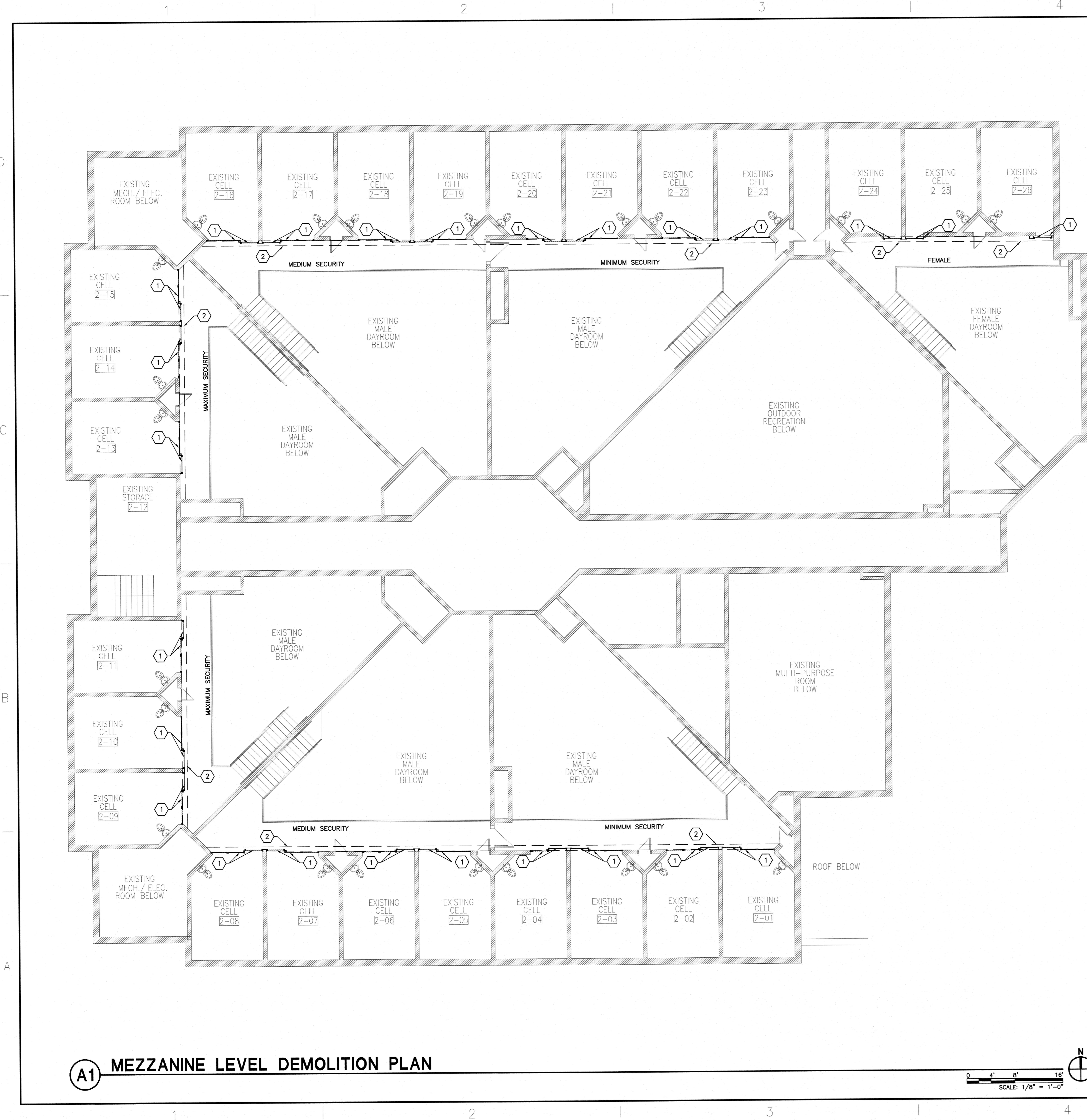
AUGUST 2023

SHEET TITLE:

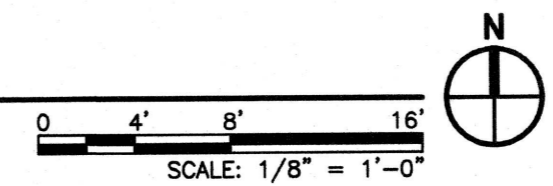
**MEZZANINE LEVEL  
DEMOLITION PLAN**

SHEET NO:

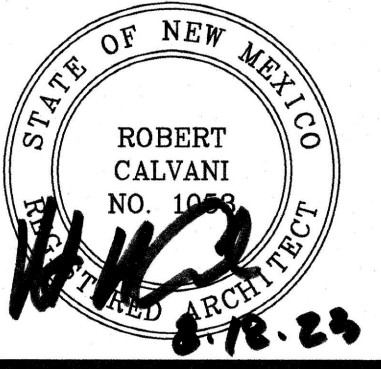
**AD-102**



**A1 MEZZANINE LEVEL DEMOLITION PLAN**







PROJECT TITLE

**CURRY COUNTY  
ADULT  
DETENTION  
CENTER DOOR  
AND HARDWARE  
REPLACEMENT**

**CLOVIS  
NEW MEXICO**

REVISIONS:

MK	DATE	DESCRIPTION

DRAWN BY: AM      CHECKED BY: JL

PROJECT NUMBER:

A22.21

DATE:

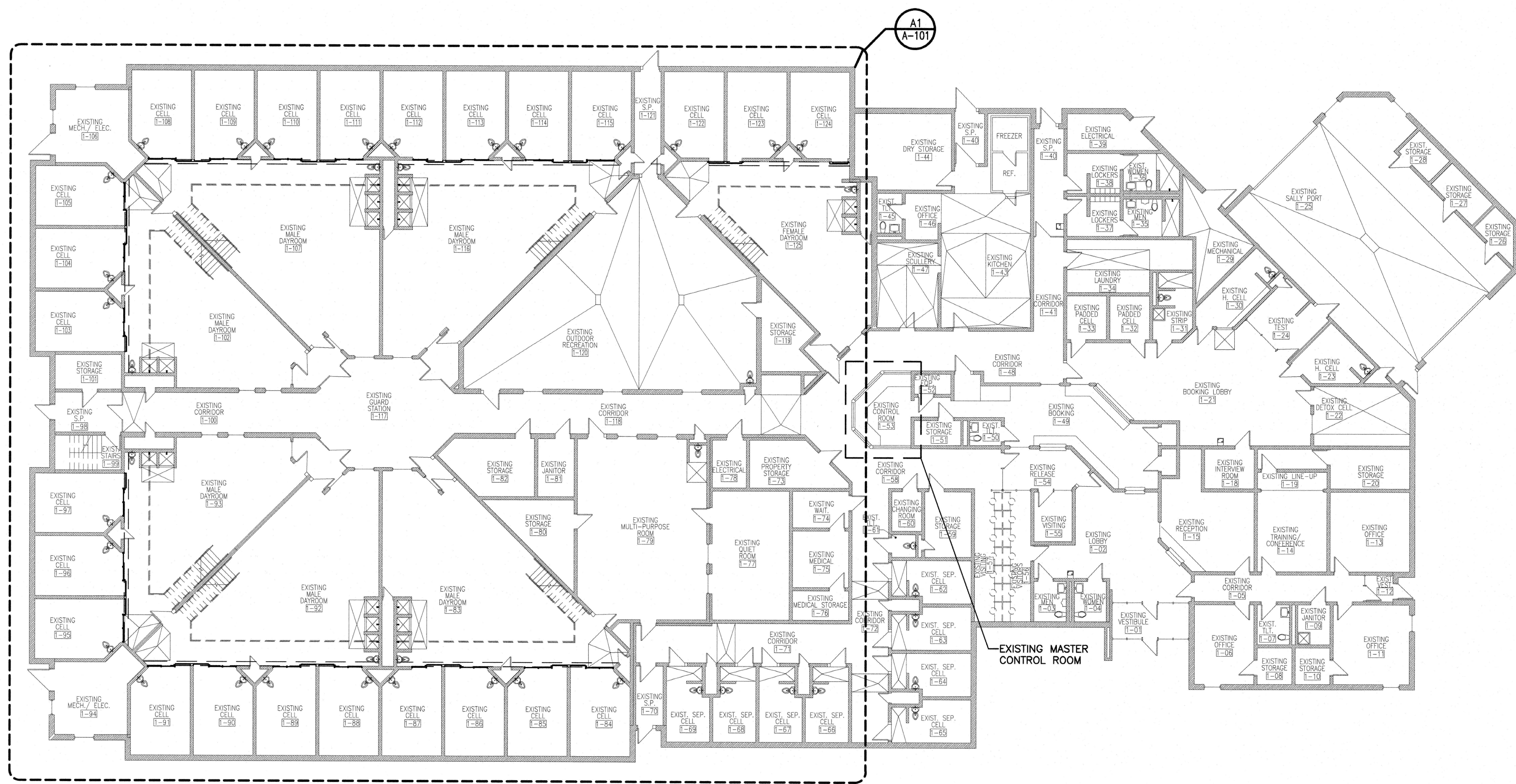
AUGUST 2023

SHEET TITLE:

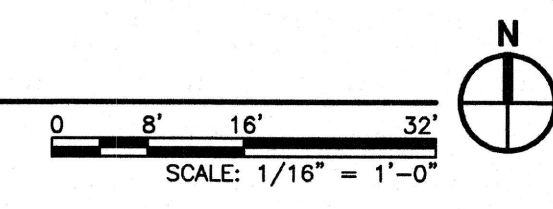
**OVERALL NEW FIRST  
FLOOR PLAN**

SHEET NO:

**A-100**



**A1 OVERALL NEW FIRST FLOOR PLAN**





**GENERAL NOTES**  
 A. CONTRACTOR TO FIELD VERIFY ALL EXISTING CONDITIONS.

**KEYED NOTES**

1. NEW SLIDING DOOR AND AS SCHEDULED. COORDINATE NEW DOOR WITH EXISTING TRACK AT HOUSING UNIT ABOVE AND TRACK AT THRESHOLD/SILL.
2. NEW GLAZING AND FRAME AS SCHEDULED. FRAME TO BE FLUSH WITH EXISTING OPENING ON DAYROOM SIDE.
3. EXISTING ELECTRIC HOUSING ABOVE TO REMAIN. PROTECT AND NOTE WIRING USAGE. CONTRACTOR TO VERIFY IF NEW DOOR CAN BE FITTED TO REUSE EXISTING SLIDING MECHANISM HARDWARE. VERIFY EXITING CONTROL AND POWER ARE ADEQUATE FOR NEW DOORS AND FOR PROPER OPERATION. COORDINATE WITH DETENTION CENTER STAFF.

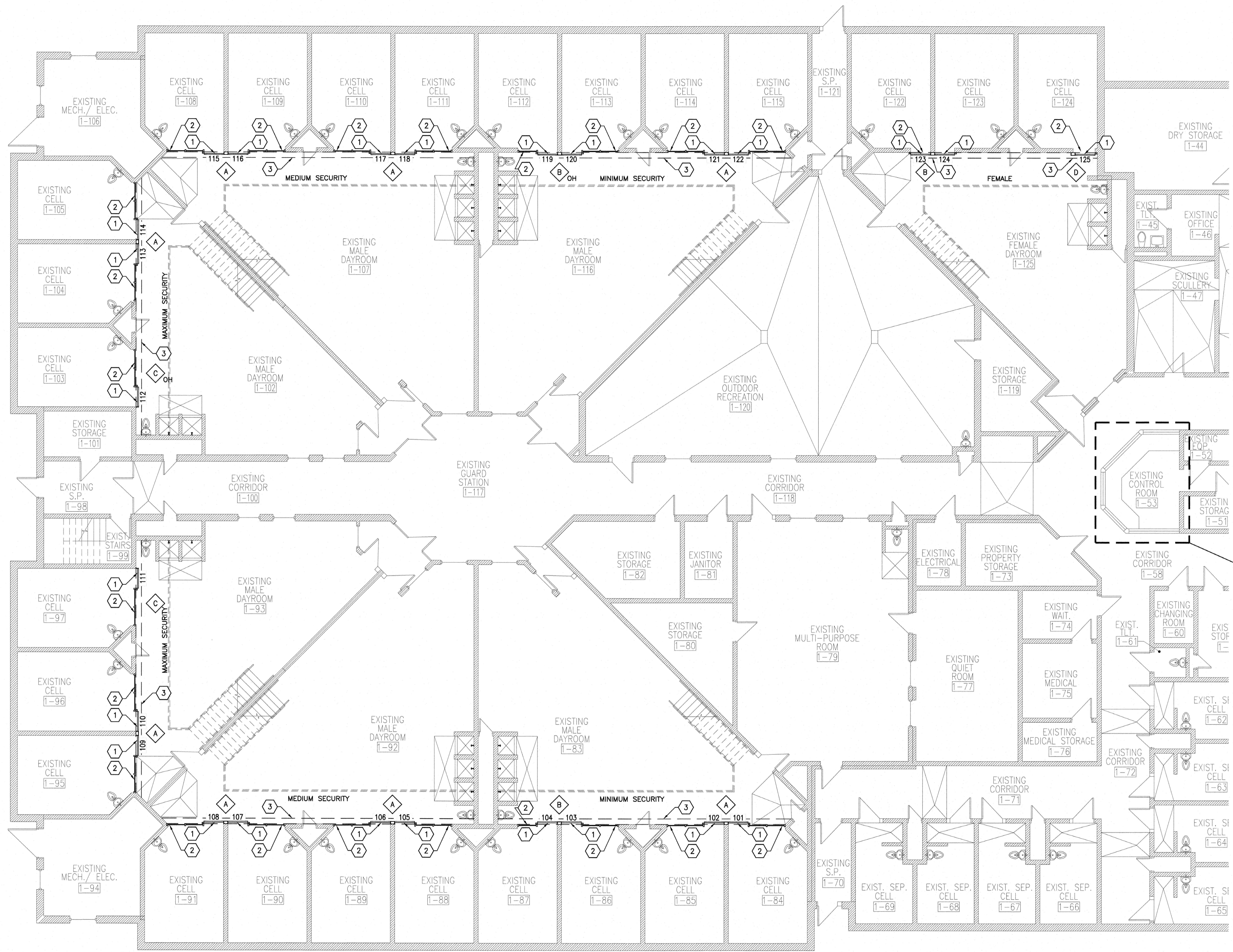
**NCA**  
 ARCHITECTS - PLANNERS - AIA

1306 RIO GRANDE BLVD NW  
 ALBUQUERQUE, NM 87104  
 505-255-8400 505-268-8954 FAX  
 WWW.NCA-ARCHITECTS.COM

ARCHITECT

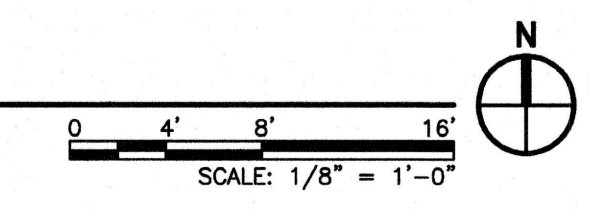
STATE OF NEW MEXICO  
 ROBERT CALVANI  
 No. 10653  
 8-17-23  
 ARCHITECT

CONSULTANT



EXISTING MASTER CONTROL ROOM

**A1** NEW FIRST FLOOR PLAN



PROJECT TITLE

**CURRY COUNTY  
 ADULT  
 DETENTION  
 CENTER DOOR  
 AND HARDWARE  
 REPLACEMENT**

CLOVIS  
 NEW MEXICO

REVISIONS:

NO.	DATE	DESCRIPTION

MK	DATE	DESCRIPTION

DRAWN BY: AM CHECKED BY: JL

PROJECT NUMBER:  
 A22.21

DATE:  
 AUGUST 2023

SHEET TITLE:  
**NEW FIRST FLOOR PLAN**

SHEET NO:  
**A-101**



**GENERAL NOTES**  
 A. CONTRACTOR TO FIELD VERIFY ALL EXISTING CONDITIONS.

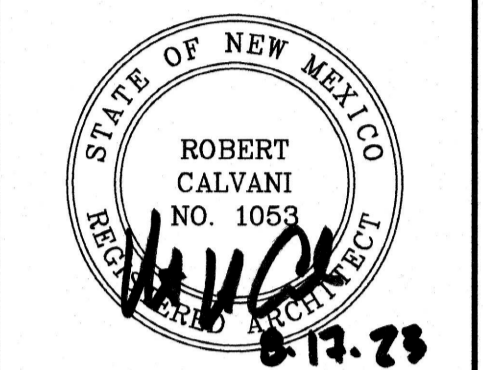
**KEYED NOTES**

1. NEW SLIDING DOOR AND AS SCHEDULED. COORDINATE NEW DOOR WITH EXISTING TRACK AT HOUSING UNIT ABOVE AND TRACK AT THRESHOLD/SILL.
2. NEW GLAZING AND FRAME AS SCHEDULED. FRAME TO BE FLUSH WITH EXISTING OPENING ON DAYROOM SIDE.
3. EXISTING ELECTRIC HOUSING ABOVE TO REMAIN. PROTECT AND NOTE WIRING USAGE. CONTRACTOR TO VERIFY IF NEW DOOR CAN BE FITTED TO REUSE EXISTING SLIDING MECHANISM HARDWARE. VERIFY EXISTING CONTROL AND POWER ARE ADEQUATE FOR NEW DOORS AND FOR PROPER OPERATION. COORDINATE WITH DETENTION CENTER STAFF.



1306 RIO GRANDE BLVD NW  
 ALBUQUERQUE, NM 87104  
 505-255-6400 505-268-6954 FAX  
 WWW.NCA-ARCHITECTS.COM

ARCHITECT



CONSULTANT

PROJECT TITLE

**CURRY COUNTY  
 ADULT  
 DETENTION  
 CENTER DOOR  
 AND HARDWARE  
 REPLACEMENT**

**CLOVIS  
 NEW MEXICO**

REVISIONS:

MK	DATE	DESCRIPTION

DRAWN BY: CHECKED BY:

AM JL

PROJECT NUMBER:

A22.21

DATE:

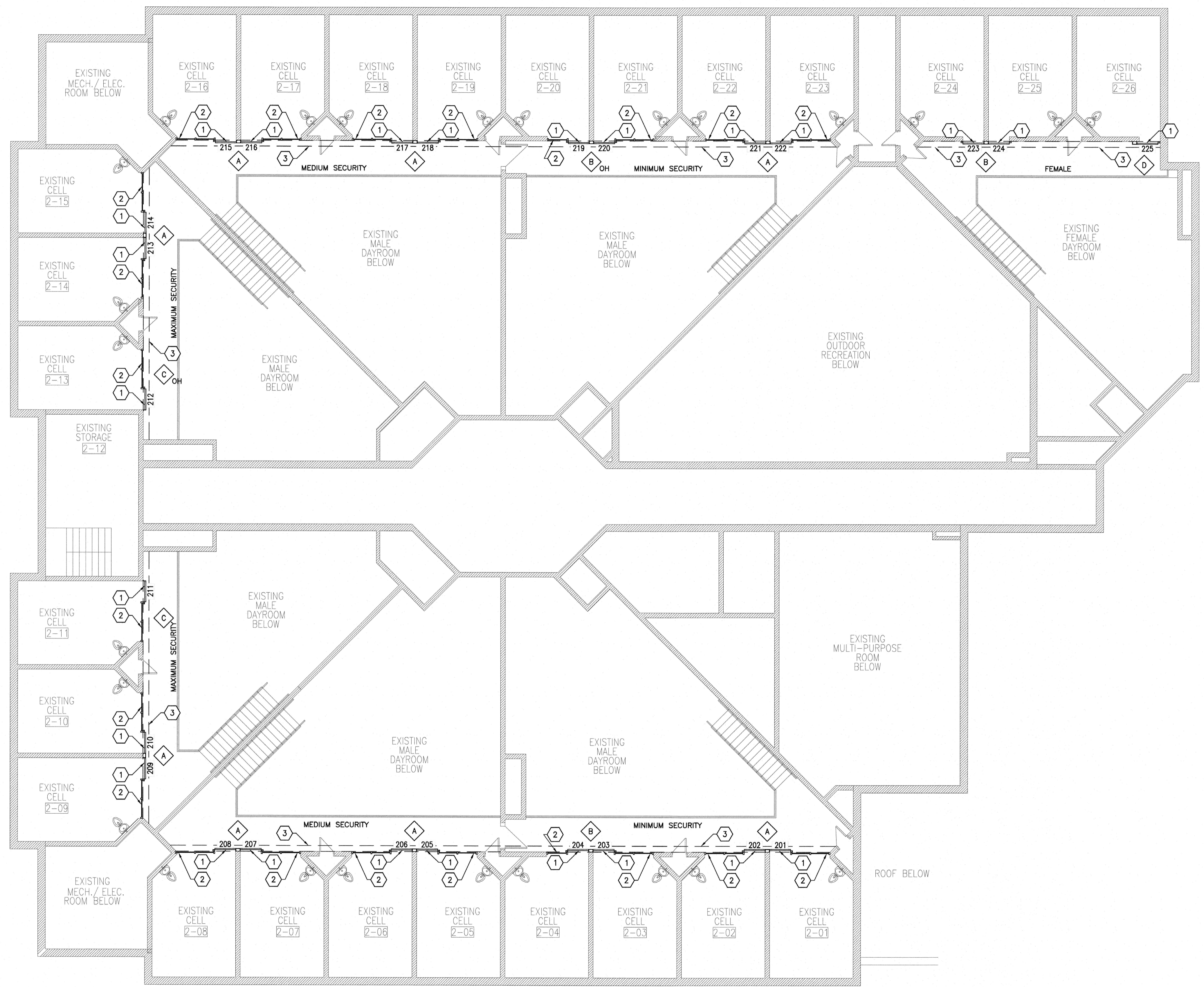
AUGUST 2023

SHEET TITLE:

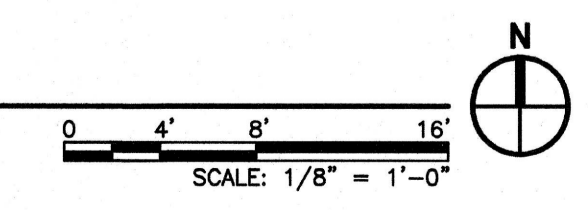
**NEW MEZZANINE  
 LEVEL PLAN**

SHEET NO:

**A-102**



**(A1) NEW MEZZANINE LEVEL PLAN**





**GENERAL NOTES**

- A. CONTRACTOR TO FIELD VERIFY ALL EXISTING CONDITIONS.
- B. CONTRACTOR TO VERIFY SLIDING DOOR SIZE NEEDED TO FIT IN EXISTING TOP AND BOTTOM SLIDING MECHANISM.
- C. VERIFY AND COORDINATE THE DISTANCE FROM FACE OF FRAME TO FACE OF DOOR SO THAT NEW DOOR ALIGNS PROPERLY WITH EXISTING SLIDING MECHANISM AT ELECTRICAL HOUSING ABOVE AND TRACK GUIDE ASSEMBLY AT BASE.

**GLAZING TYPES**

(G)	GLOBAL SECURITY GLAZING SP 028 GLASS CLAD POLYCARBONITE
-----	---

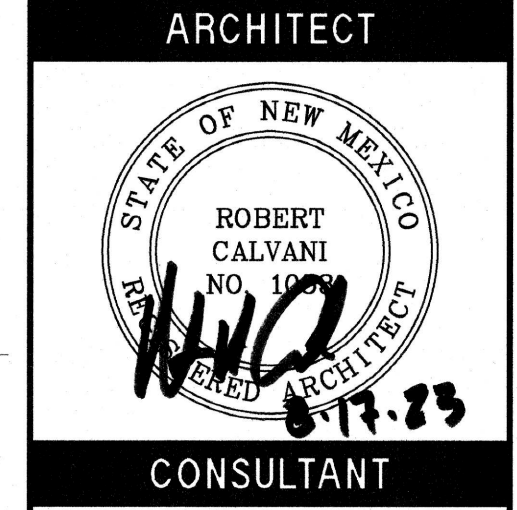
**DOOR SCHEDULE**

DOOR NO.	SGL	PR	DOOR				FRAME TYPE	RATING	REMARKS
			WIDTH	HEIGHT	THICK	TYPE			
101	*		3'-0"	6'-7"	2"	SHM1	A		
102	*		3'-0"	6'-7"	2"	SHM1	A		
103	*		3'-0"	6'-7"	2"	SHM1	B		
104	*		3'-0"	6'-7"	2"	SHM1	B		
105	*		3'-0"	6'-7"	2"	SHM1	A		
106	*		3'-0"	6'-7"	2"	SHM1	A		
107	*		3'-0"	6'-7"	2"	SHM1	A		
108	*		3'-0"	6'-7"	2"	SHM1	A		
109	*		3'-0"	6'-7"	2"	SHM1	A		
110	*		3'-0"	6'-7"	2"	SHM1	A		
111	*		3'-0"	6'-7"	2"	SHM1	C		
112	*		3'-0"	6'-7"	2"	SHM1	C(OH)		
113	*		3'-0"	6'-7"	2"	SHM1	A		
114	*		3'-0"	6'-7"	2"	SHM1	A		
115	*		3'-0"	6'-7"	2"	SHM1	A		
116	*		3'-0"	6'-7"	2"	SHM1	A		
117	*		3'-0"	6'-7"	2"	SHM1	A		
118	*		3'-0"	6'-7"	2"	SHM1	A		
119	*		3'-0"	6'-7"	2"	SHM1	B(OH)		
120	*		3'-0"	6'-7"	2"	SHM1	B(OH)		
121	*		3'-0"	6'-7"	2"	SHM1	A		
122	*		3'-0"	6'-7"	2"	SHM1	A		
123	*		3'-0"	6'-7"	2"	SHM1	A		
124	*		3'-0"	6'-7"	2"	SHM1	A		
125	*		3'-0"	6'-7"	2"	SHM1	A		
201	*		3'-0"	6'-7"	2"	SHM1	A		
202	*		3'-0"	6'-7"	2"	SHM1	A		
203	*		3'-0"	6'-7"	2"	SHM1	B		
204	*		3'-0"	6'-7"	2"	SHM1	B		
205	*		3'-0"	6'-7"	2"	SHM1	A		
206	*		3'-0"	6'-7"	2"	SHM1	A		
207	*		3'-0"	6'-7"	2"	SHM1	A		
208	*		3'-0"	6'-7"	2"	SHM1	A		
209	*		3'-0"	6'-7"	2"	SHM1	A		
210	*		3'-0"	6'-7"	2"	SHM1	A		
211	*		3'-0"	6'-7"	2"	SHM1	C		
212	*		3'-0"	6'-7"	2"	SHM1	C(OH)		
213	*		3'-0"	6'-7"	2"	SHM1	A		
214	*		3'-0"	6'-7"	2"	SHM1	A		
215	*		3'-0"	6'-7"	2"	SHM1	A		
216	*		3'-0"	6'-7"	2"	SHM1	A		
217	*		3'-0"	6'-7"	2"	SHM1	A		
218	*		3'-0"	6'-7"	2"	SHM1	A		
219	*		3'-0"	6'-7"	2"	SHM1	B(OH)		
220	*		3'-0"	6'-7"	2"	SHM1	B(OH)		
221	*		3'-0"	6'-7"	2"	SHM1	A		
222	*		3'-0"	6'-7"	2"	SHM1	A		
223	*		3'-0"	6'-7"	2"	SHM1	A		
224	*		3'-0"	6'-7"	2"	SHM1	A		
225	*		3'-0"	6'-7"	2"	SHM1	A		

NOTE: ALL SLIDER CELL DOORS WILL BE IN THE HARDWARE GROUP "S-72C."



1306 RIO GRANDE BLVD NW  
ALBUQUERQUE, NM 87104  
505-255-6400 505-268-6954 FAX  
WWW.NCA-ARCHITECTS.COM



**PROJECT TITLE**  
**CURRY COUNTY ADULT DETENTION CENTER DOOR AND HARDWARE REPLACEMENT**

**CLOVIS NEW MEXICO**

**REVISIONS:**

MK	DATE	DESCRIPTION

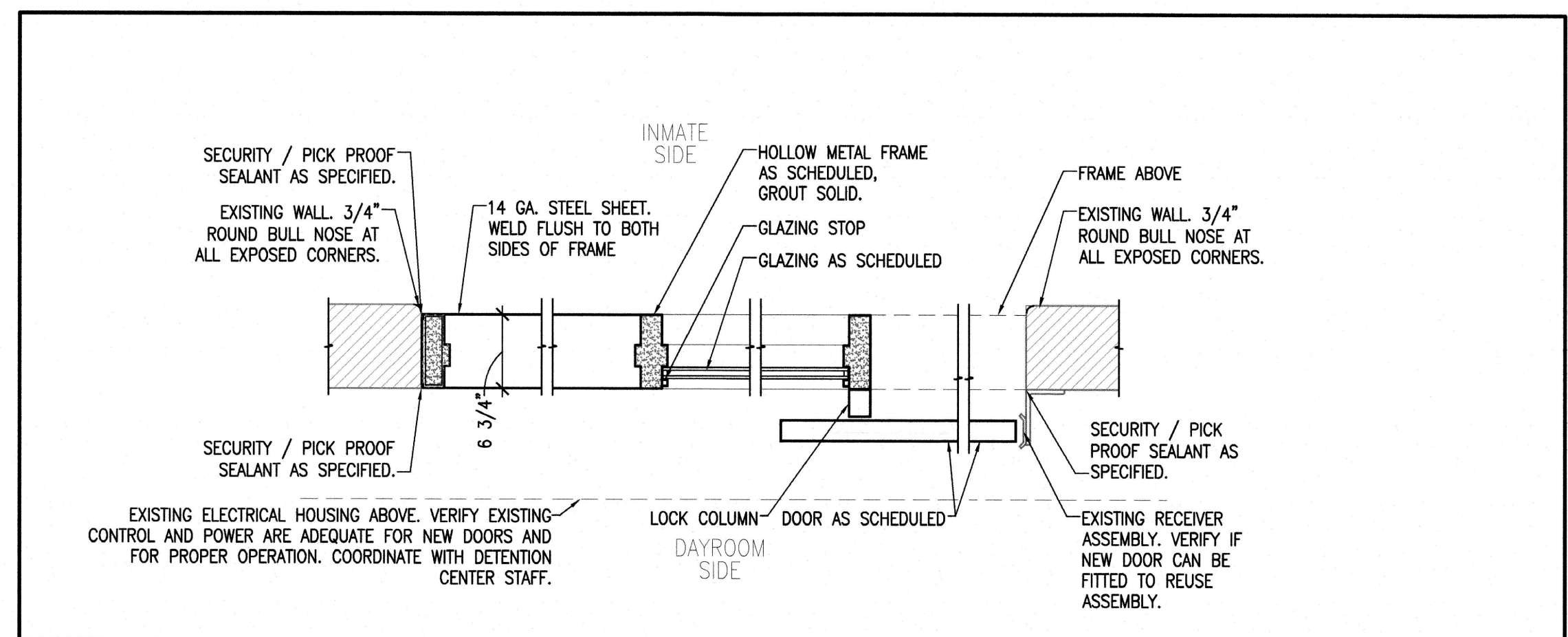
DRAWN BY: AM CHECKED BY: JL

PROJECT NUMBER: A22.21  
DATE: AUGUST 2023  
SHEET TITLE:

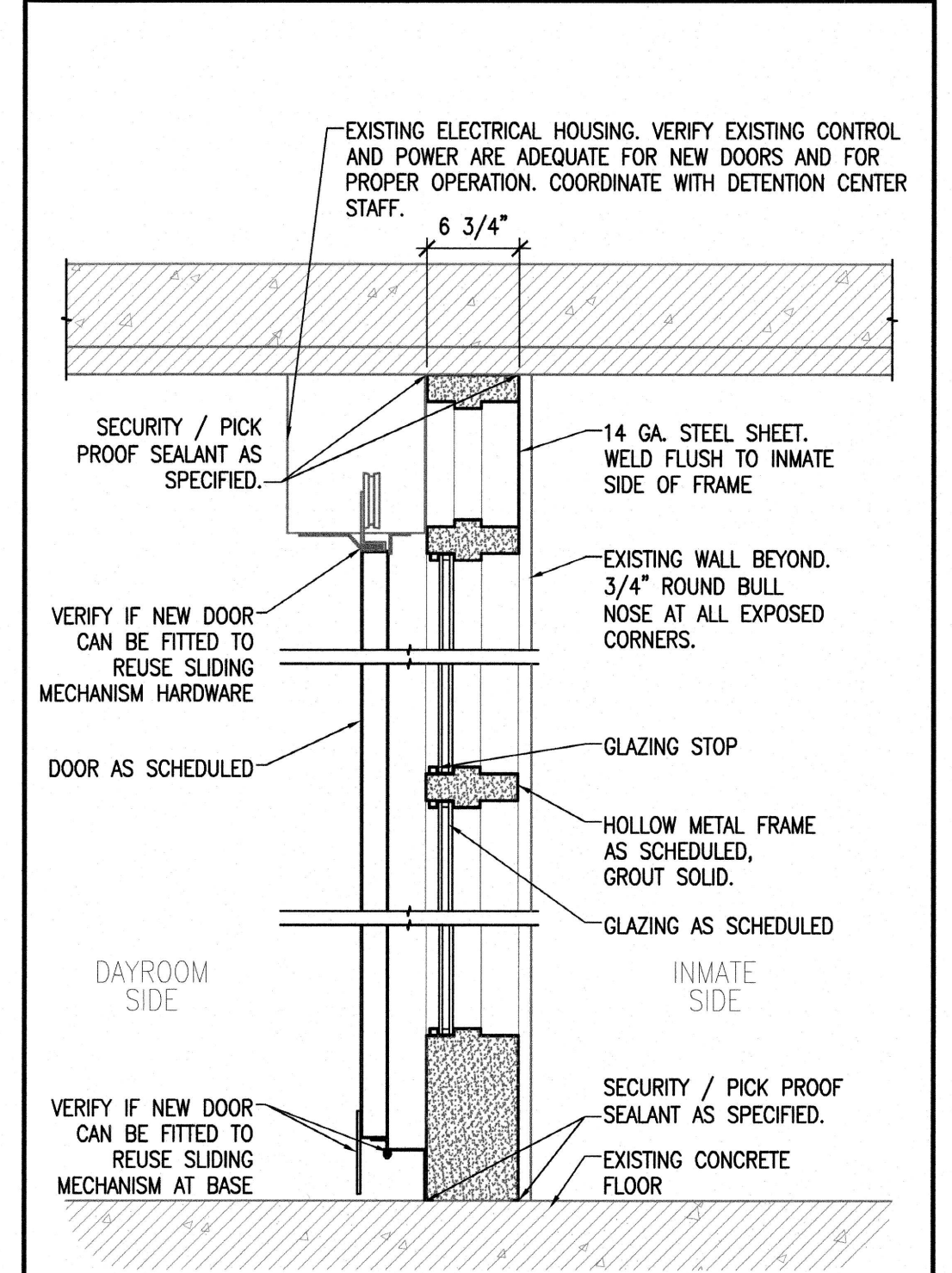
**DOOR AND FRAME TYPES, GLAZING TYPES, AND DOOR SCHEDULE**

SHEET NO:

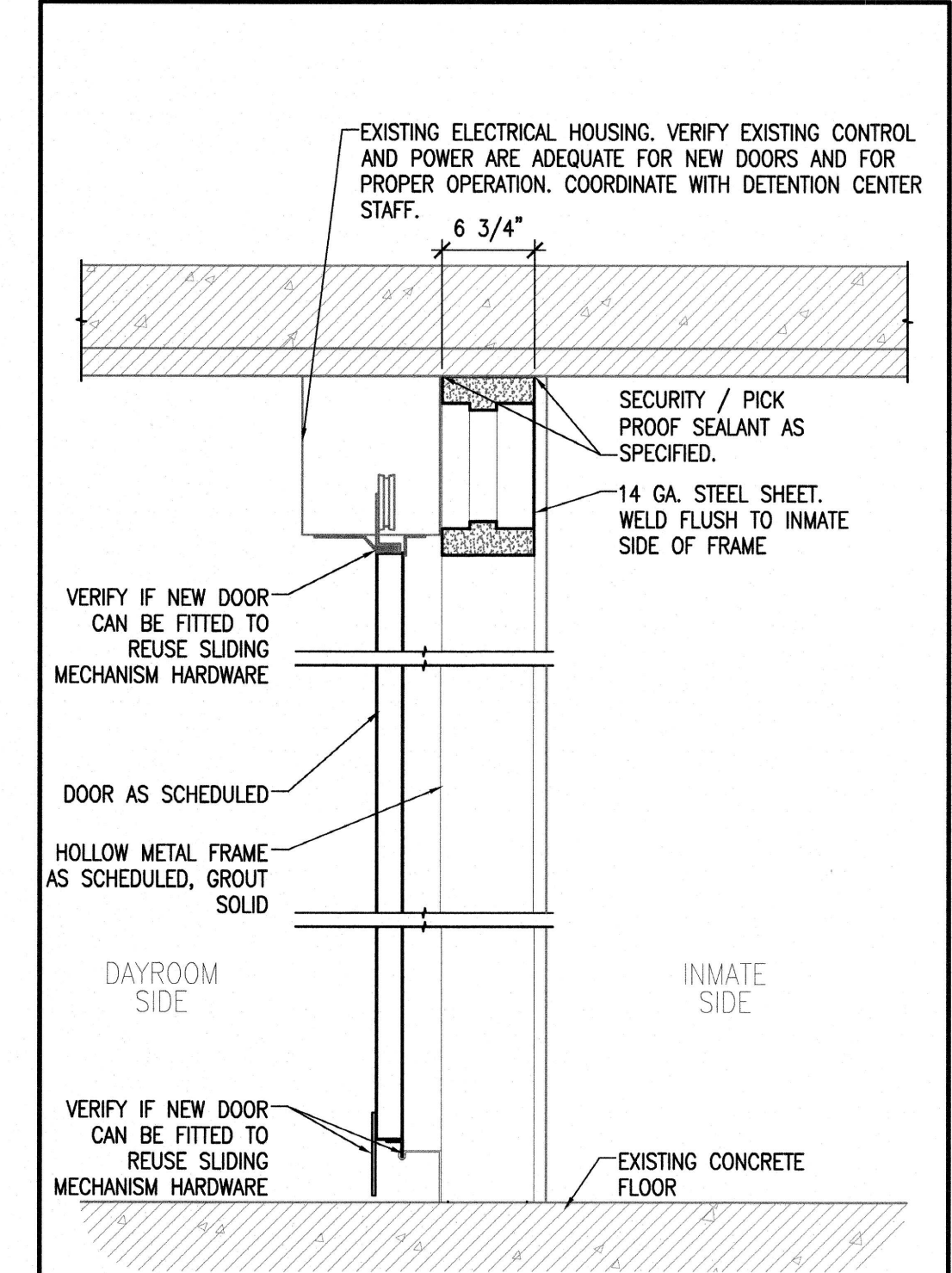
**A-621**



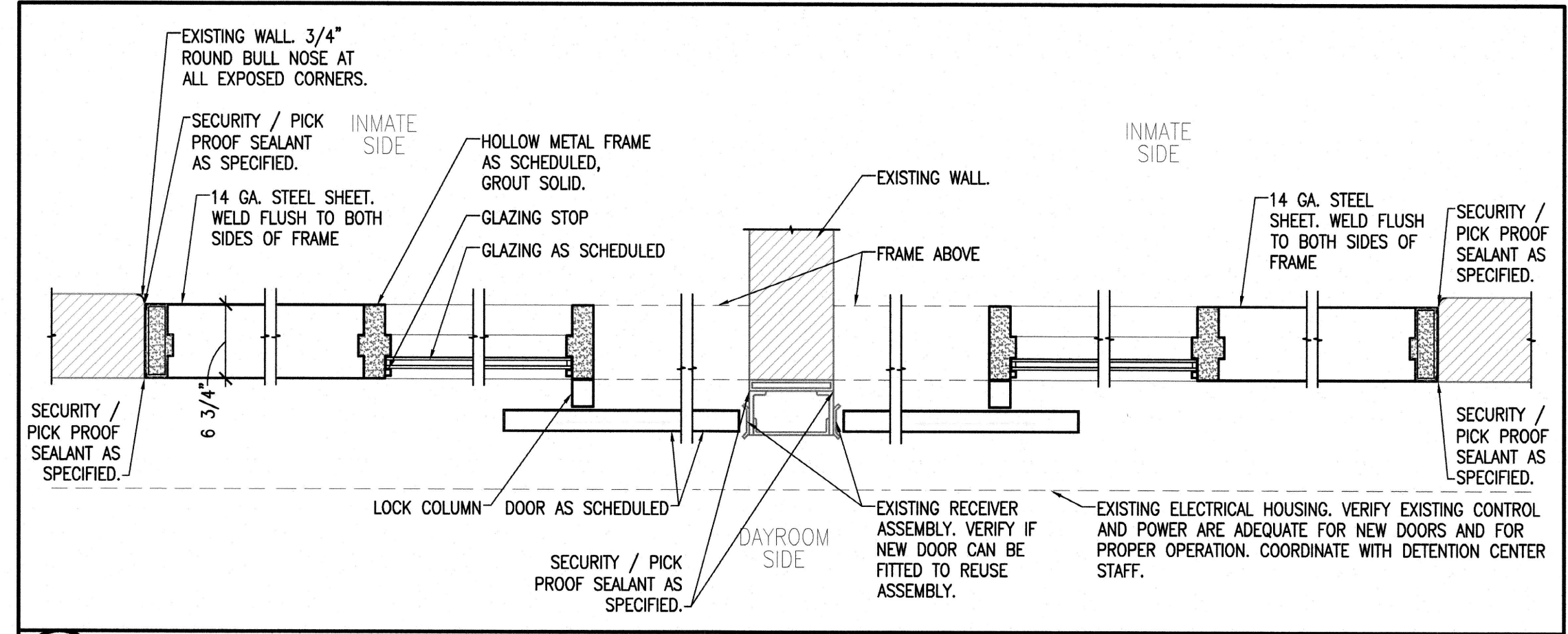
**C1 JAMB DETAIL** 1"=1'-0"



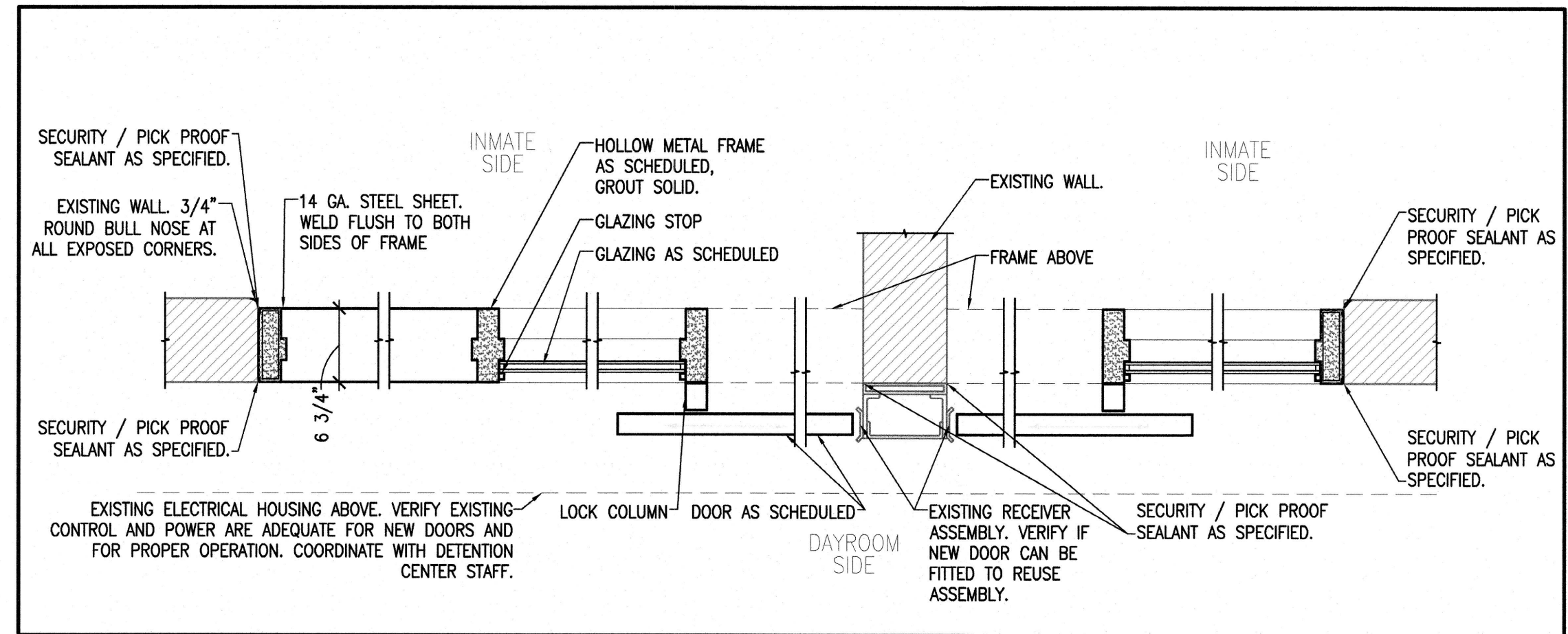
**C3 HEAD/MULLION/THRESHOLD DETAIL** 1"=1'-0"



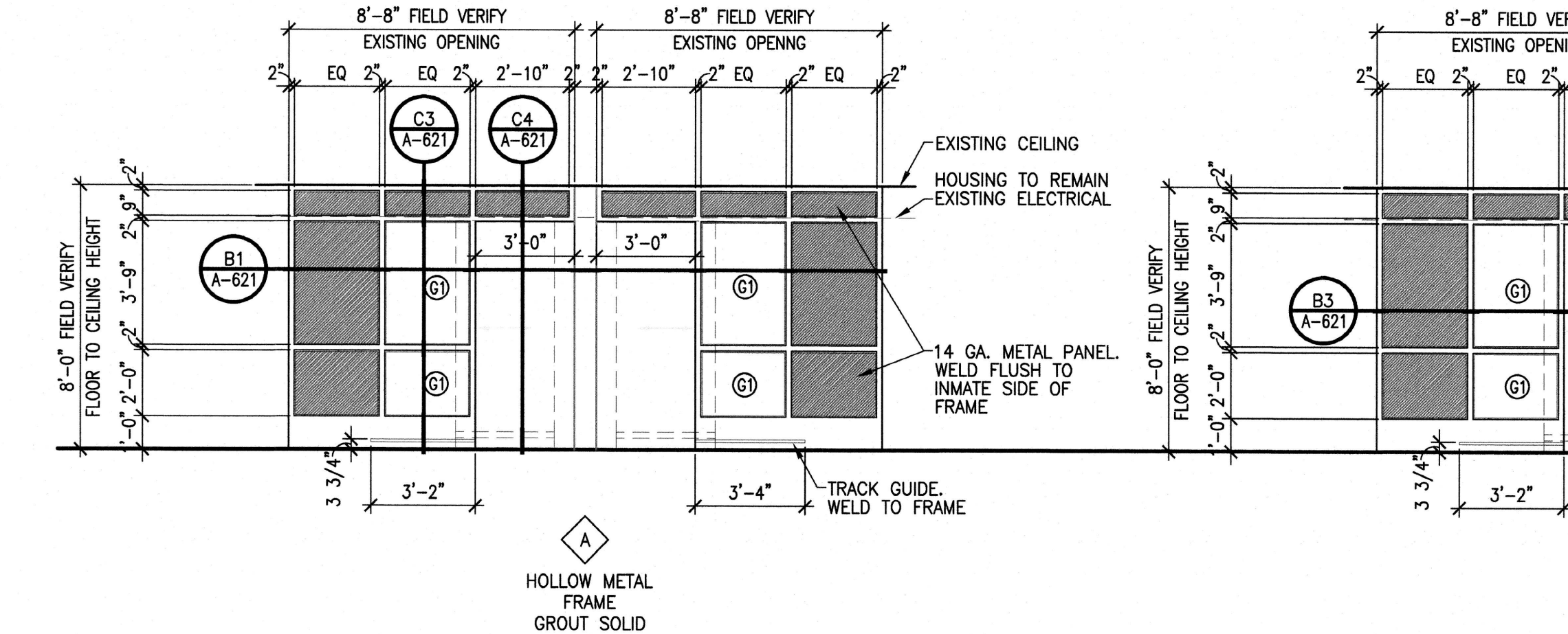
**C4 HEAD/MULLION/THRESHOLD DETAIL** 1"=1'-0"



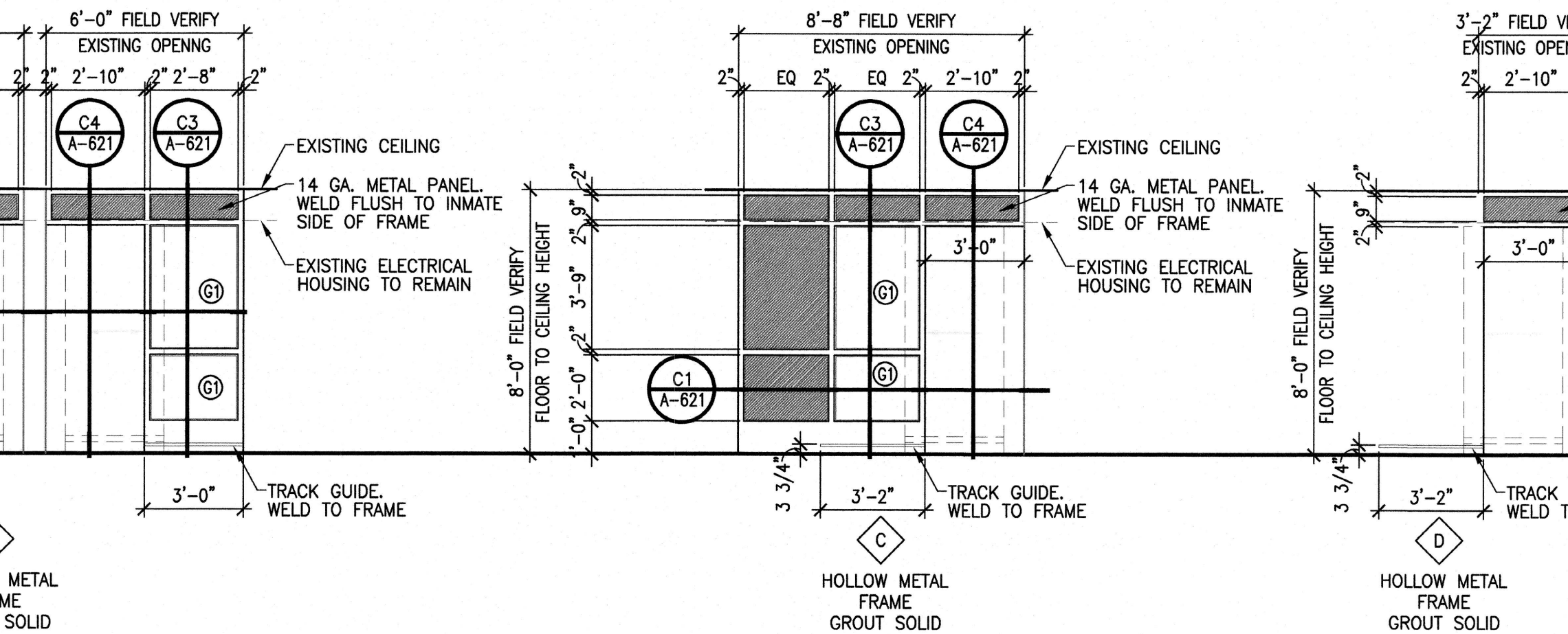
**B1 JAMB DETAIL** 1"=1'-0"



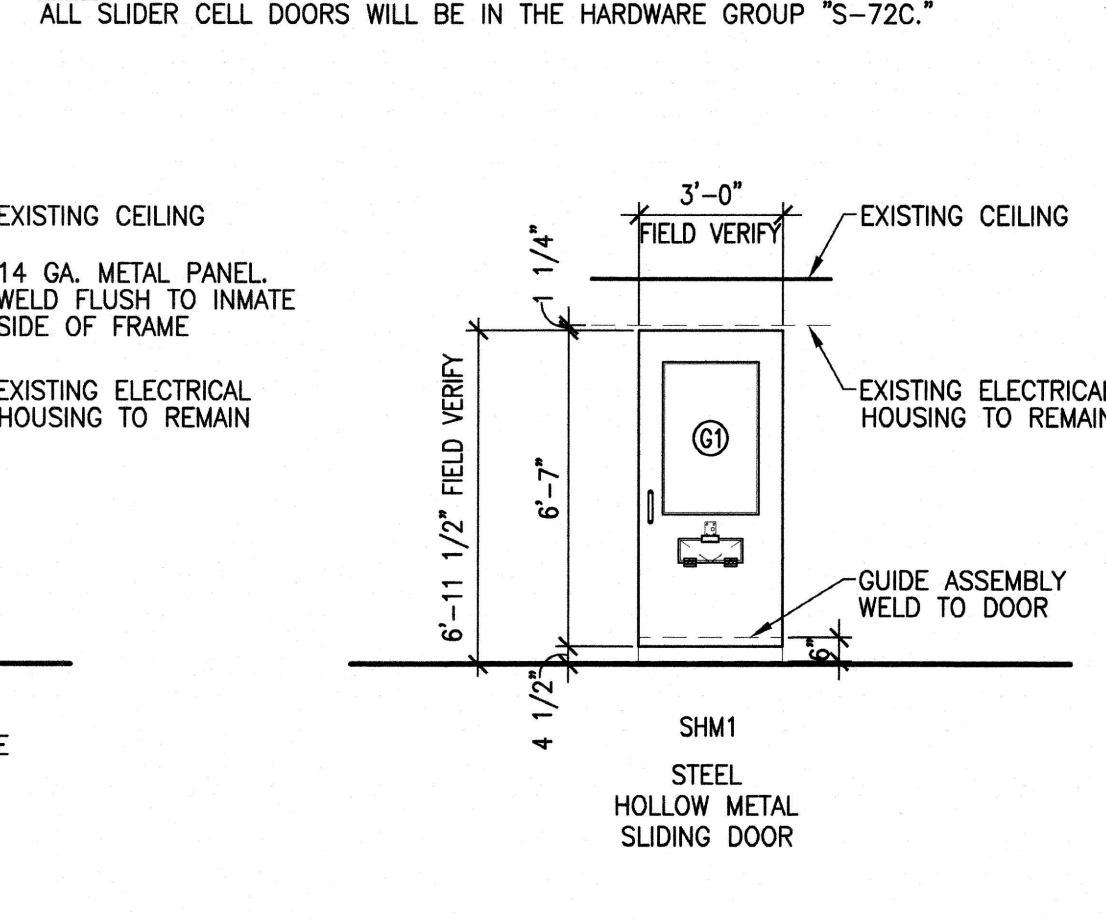
**B3 JAMB DETAIL** 1"=1'-0"



**A1 FRAME TYPES**



**A5 DOOR TYPES**



**A5 DOOR TYPES** SCALE: 1/4" = 1'-0"