

## **SCOPE OF WORK – Aynor Middle School CANOPY**

### **1.00 Project:**

The following is summary of work required for the installation of a new canopy walkway covering.

Project Location: 400 Frye Road, Galivants Ferry, SC 29544

Owner: Horry County Schools

## **SPECIFICATION 10530 – EXTRUDED ALUMINUM WALKWAY COVERS**

### **PART 1 - GENERAL**

#### **1.01 Related Documents**

A. Drawings and general provisions of Contract, including General and Supplementary Conditions and Division 1 Specification Sections, shall apply to work specified in this section.

#### **1.02 General Description of Work**

A. Work in this section shall include design, fabrication and installation of a complete flat, gable, or pitched extruded aluminum canopy system with welded drain beams and trusses in accordance with the drawings and this specification.

B. This work includes the provision of all labor, tools, equipment, supervision, materials and administration to integrate the work outlined in this project manual.

C. The Contractor is responsible for identifying the location of all utilities. Any utilities that are interrupted or damaged by the Contractor or subcontractor must be repaired before the Contractor leaves the job site that day. Any interruption in service will need to be coordinated and approved in advance with the HCS Project Manager.

D. Work in this section shall include design, fabrication and installation of a completely welded, extruded aluminum canopy system. All work shall be in complete accordance with the aeriels and this specification.

#### **1.03 References**

- A. Aluminum Design Manual 2000, Specifications & Guidelines for Aluminum Structures.
- B. ASCE 7, Minimum Design Loads for Buildings and Other Structures.
- C. American Architectural Manufacturers Association (AAMA)
- D. American Society for Testing and Materials (ASTM)

#### **1.04 Submittals**

- A. Product Data: Submit manufacturer's product information, specifications and installation instructions for components and accessories.
- B. Shop Drawings: Submit complete erection drawings showing attachment system, column and gutter beam framing, transverse cross sections, covering and trim details, and option installation details to clearly indicate proper assembly of components. Detailed shop drawings shall be submitted, sealed by a State Registered Structural Engineer.
- C. Certification: Submit written Certification prepared and signed by a State Registered Structural Engineer verifying that framing design will safely resist wind uplift loading requirements of the Standard Building Code, latest edition as referenced in State Requirements for Educational Facilities 1999 and wind loading requirements of ANSI/ASCE 7.
- D. Design and engineering of canopy footings and attachment surfaces are not covered in this specification and scope of work.

#### **1.05 Quality Assurance**

- A. Codes and standards: Comply with provisions of the following except as otherwise indicated: Standard building code, latest addition with amendments, if any. AWS (American Welding Society) standards for structural aluminum welding.
- B. Manufacturer: Obtain aluminum covered walkway system from only one (1) manufacturer, although several may be indicated as offering products complying with requirements.
- C. Installer Qualifications: Firm with not less than three (3) years experience in installation of aluminum walkway covers of type, quantity and installation methods similar to work of this section.
- D. Field Measurements: Take field measurements prior to preparation of shop drawings and fabrication where possible, to insure proper fitting of work.
- E. Coordination: Coordinate work of this section with work of other sections which interface with covered walkway system (sidewalk, curbs, building fascias, etc.).

#### **1.06 Warranty**

- A. Provide manufactures standard one-year installation warranty.
- B. Provide manufactures standard one-year warranty on finish, metal failure and fastener failure from date of substantial completion.

## **PART 2 - PRODUCT**

### **2.01 Manufacturers**

A. Contract documents are based on products manufactured by:

- **East Coast TVM, LLC** [www.ectvm.com](http://www.ectvm.com)
- **Approved Equal**

B. Interested manufacturers will be considered for substitution only when the following conditions are met: Complete details, including connections and structural calculations showing loads applied in accordance with the specification, must be submitted to the owner / architect for review. Submit complete details with structural properties (moment of inertia, section modulus, modulus of elasticity, etc.) for all proposed sections (bents, columns, decking and other structural members).

### **2.02 Materials**

A. Aluminum Extrusions: All sections shall be extruded aluminum 6063 alloy, heat treated to T-6 temper.

B. Finishes: For factory baked enamel finish, specify AAMA 2603. Color to be Berkshire Blue to match existing canopy color.

### **2.03 Components**

- A. Columns: shall be 4" x 4". Columns shall be radius cornered tubular extrusions of size specified by manufacturer's structural engineer with cutout and internal diverter for drainage where indicated. Circular downspout opening in column is not acceptable.
- B. Beams: shall be 4" x 6" beams with open-top tubular extrusions, top edges thickened for strength and designed to receive deck members in self-flashing manner.
- C. Deck: Deck shall be 6" x 3" x .060" pan & cap extruded self-flashing sections interlocking into a composite unit.
- D. Fascia: Fascia shall be 6" x 1" false fascia profile.
- E. Flashing: Flashing shall be .032 aluminum (min.).

### **2.04 Fabrication**

A. Drainage: Water shall drain internally from deck to beams to columns, for discharge out to rain diverters at or below ground level as indicated on architectural drawings.

B. Deck Construction: Deck shall be manufactured of extruded modules that interlock in a self-flashing manner. Interlocking joints shall be positively fastened at 18" O.C. creating a monolithic structural unit capable of developing the full strength of the sections. The fastenings must have minimum shear strength of 350 pounds each. Deck shall be assembled with sufficient camber to offset dead load deflection.

## **PART 3 - EXECUTION**

### **3.01 Preparation**

A. Erection shall be performed after all concrete, masonry, and roofing work in the vicinity is complete and cleaned.

### **3.02 Installation**

A. Column Sleeves: Column sleeves (styrofoam block-outs) or anchor bolts (if required) shall be furnished by canopy manufacturer and installed by the General Contractor.

B. Erection: Protective cover shall be erected true to line, level and plumb.

### **3.03 Cleaning**

A. All protective cover components shall be cleaned promptly after installation.

### **3.04 Protection**

A. Extreme care shall be taken to protect materials during and after installation.

5. Specifics:



HORRY COUNTY SCHOOLS – Aynor Middle School

The yellow areas represent the locations of the new canopies.

The project will be a turn key job, which includes the following: canopy, sidewalk, footings, lights, and relocate irrigation heads, etc.

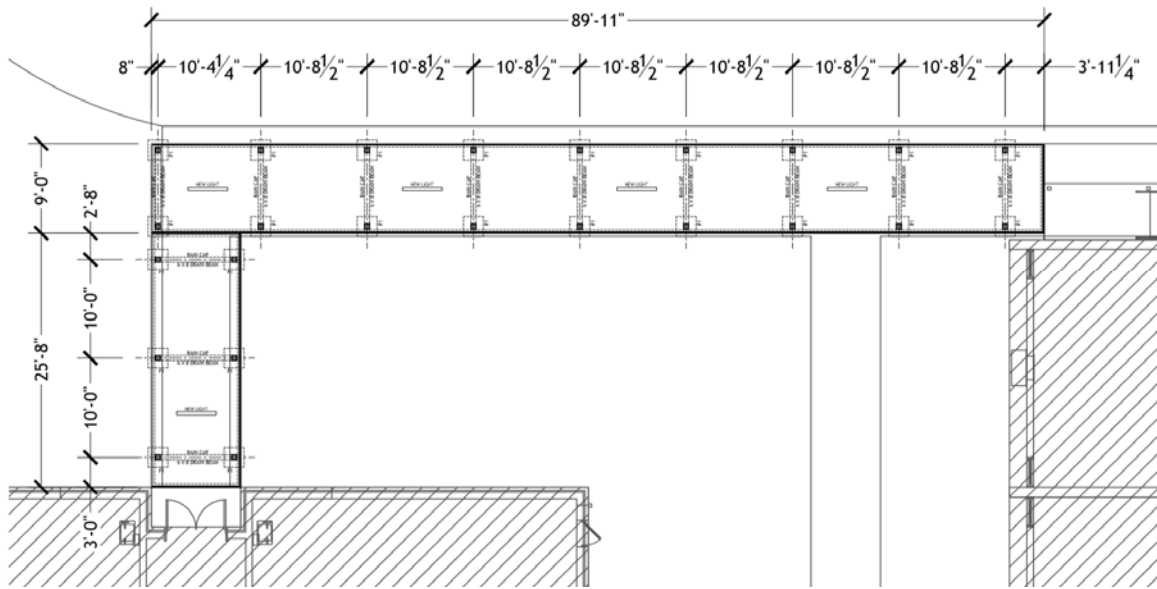
**Notes:**

- The overall canopy width is 8'-6" wide.
- The existing sidewalk is 5'.
- The length of the new canopy is +/- 75' of canopy to the existing
- Add another 4' of sidewalk to the existing sidewalk.
- A light will be added every other section.

Contractor Initials \_\_\_\_ District Initials \_\_\_\_

SCOPE OF WORK – WALKWAY COVERING  
HCS FACILITIES – AYNOR MIDDLE SCHOOL

Canopy - Typ. Spacing (for reference only)



Contractor Initials \_\_\_\_ District Initials \_\_\_\_

SCOPE OF WORK – WALKWAY COVERING  
HCS FACILITIES – AYNOR MIDDLE SCHOOL

# VISION 4

Vandal Resistant

VPF 4 Series Fluorescent



WALL / CEILING/  
PENDANT MOUNT  
LAMPS: T5, T5HO

Fixture Type	Date
Job Name	Approved By
Catalog Number	

## SPECIFICATIONS

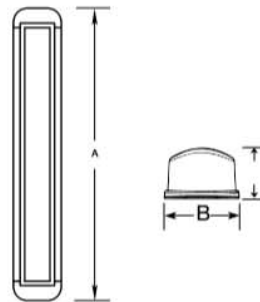
ADA Compliant



- Description** The Vision 4 series features an all aluminum construction and optional wet location listing which allows it to be used in many challenging environmental conditions. Designed in conjunction with an ophthalmologist, the polycarbonate lens provides complete control of glare and lamp image while maintaining the high efficiency of clear optical material. The Vision 4 series can be row mounted to any length. Natatorium finish is standard for all versions of this fixture.
- Housing** Marine grade heat treated extruded aluminum. Chemically primed and finished with robotically applied polyester powder coat.
- Lens** Extruded UV stabilized opal polycarbonate with integral prisms. Maximum wall thickness 0.160". Secured to housing with die cast aluminum clamps and stainless steel TORX® head screws.
- End Caps** Die-cast marine grade aluminum with conduit knockouts that are visible from interior of end cap.
- Ballast** Electronic high frequency ballast with less than 10% total harmonic distortion, 120V-277V only. 347V optional.
- Sockets** Precision spring loaded snap type for maximum impact damping.
- UL Listing** U.L., C.UL., Damp Standard, Wet optional.
- Lifetime Warranty** Luminaire LED Incorporated will repair or replace any fixture damaged due to vandalism for the lifetime of the installation.

## DIMENSIONAL DATA

	A	B	C
VPF42HO	26.10	4.35	2.58
VPF43HO	37.91	4.35	2.58
VPF44HO	49.72	4.35	2.58



5 Sutton Place  
P.O. Box 2162  
Edison, NJ 08818

P. 732.549.0056  
F. 732.549.9737

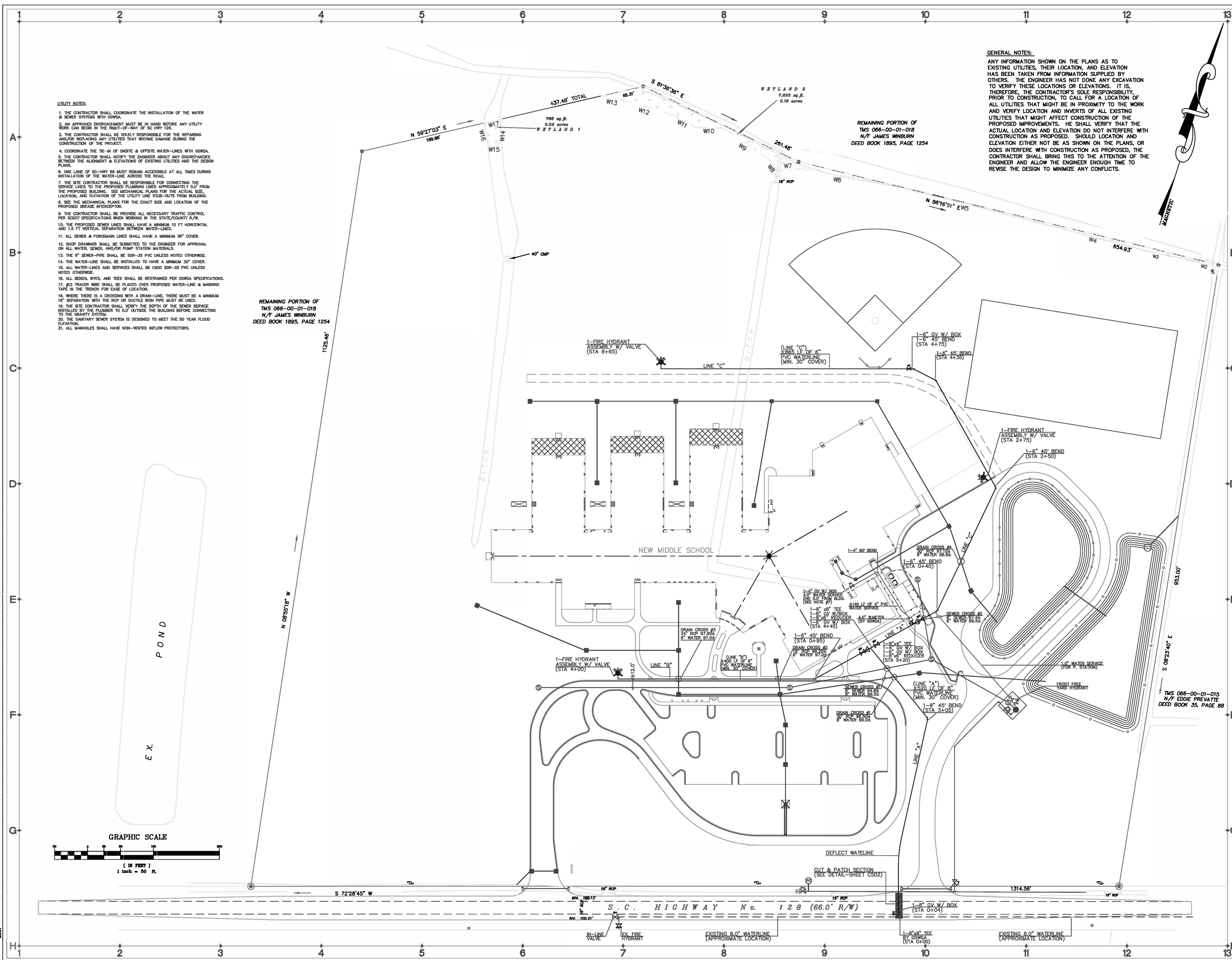
Luminaire LED Incorporated products are manufactured in the USA with components purchased from USA suppliers, and meet the Buy American requirements under the ARRA. Content of specification sheets is subject to change; please consult our website for current product information.

Rev: 2/17

Contractor Initials \_\_\_\_ District Initials \_\_\_\_

SCOPE OF WORK – WALKWAY COVERING  
HCS FACILITIES – GREEN SEA FLOYDS ELEMENTARY SCHOOL

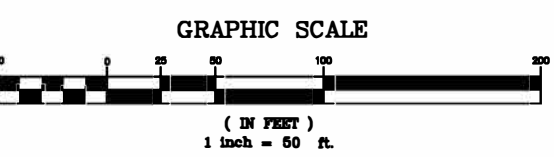
THIS DRAWING IS FOR INFORMATIONAL PURPOSES ONLY. THE CONTRACTOR MUST FIELD VERIFY EXISTING CONDITIONS



**GENERAL NOTES:**  
 ANY INFORMATION SHOWN ON THE PLANS AS TO EXISTING UTILITIES, THEIR LOCATION, AND ELEVATION HAS BEEN TAKEN FROM INFORMATION SUPPLIED BY OTHERS. THE ENGINEER HAS NOT DONE ANY EXCAVATION TO VERIFY THESE LOCATIONS OR ELEVATIONS. IT IS, THEREFORE, THE CONTRACTOR'S SOLE RESPONSIBILITY, PRIOR TO CONSTRUCTION, TO CALL FOR A LOCATION OF ALL UTILITIES THAT MIGHT BE IN PROXIMITY TO THE WORK AND VERIFY LOCATION AND INVERTS OF ALL EXISTING UTILITIES THAT MIGHT AFFECT CONSTRUCTION OF THE PROPOSED IMPROVEMENTS. HE SHALL VERIFY THAT THE ACTUAL LOCATION AND ELEVATION DO NOT INTERFERE WITH CONSTRUCTION AS PROPOSED. SHOULD LOCATION AND ELEVATION EITHER NOT BE AS SHOWN ON THE PLANS, OR DOES INTERFERE WITH CONSTRUCTION AS PROPOSED, THE CONTRACTOR SHALL BRING THIS TO THE ATTENTION OF THE ENGINEER AND ALLOW THE ENGINEER ENOUGH TIME TO REVISE THE DESIGN TO MINIMIZE ANY CONFLICTS.

- UTILITY NOTES:**
1. THE CONTRACTOR SHALL COORDINATE THE INSTALLATION OF THE WATER & SEWER SYSTEMS WITH OSWSA.
  2. AN APPROVED ENCROACHMENT MUST BE IN HAND BEFORE ANY UTILITY WORK CAN BEGIN IN THE RIGHT-OF-WAY OF SC HWY 128.
  3. THE CONTRACTOR SHALL BE SOLELY RESPONSIBLE FOR THE REPAIRING AND/OR REPLACING ANY UTILITIES THAT BECOME DAMAGED DURING THE CONSTRUCTION OF THE PROJECT.
  4. COORDINATE THE TIE-IN OF ONSITE & OFFSITE WATER-LINES WITH OSWSA.
  5. THE CONTRACTOR SHALL NOTIFY THE ENGINEER ABOUT ANY DISCREPANCIES BETWEEN THE ALIGNMENT & ELEVATIONS OF EXISTING UTILITIES AND THE DESIGN PLANS.
  6. ONE LANE OF SC-HWY 68 MUST REMAIN ACCESSIBLE AT ALL TIMES DURING INSTALLATION OF THE WATER-LINE ACROSS THE ROAD.
  7. THE SITE CONTRACTOR SHALL BE RESPONSIBLE FOR CONNECTING THE SERVICE LINES TO THE PROPOSED FILING LINES APPROXIMATELY 3.0' FROM THE PROPOSED BUILDING. SEE MECHANICAL PLANS FOR THE ACTUAL SIZE, LOCATION, AND ELEVATION OF THE UTILITY LINE STUB-OUTS FROM BUILDING.
  8. SEE THE MECHANICAL PLANS FOR THE EXACT SIZE AND LOCATION OF THE PROPOSED GREASE INTERCEPTOR.
  9. THE CONTRACTOR SHALL PROVIDE ALL NECESSARY TRAFFIC CONTROL PER 500T SPECIFICATIONS WHEN WORKING IN THE STATE/COUNTY R/W.
  10. THE PROPOSED SEWER LINES SHALL HAVE A MINIMUM 10 FT HORIZONTAL AND 1.5 FT VERTICAL SEPARATION BETWEEN WATER-LINES.
  11. ALL SEWER & FORCEMAIN LINES SHALL HAVE A MINIMUM 36" COVER.
  12. SHOP DRAWINGS SHALL BE SUBMITTED TO THE ENGINEER FOR APPROVAL ON ALL WATER, SEWER, AND/OR PUMP STATION MATERIALS.
  13. THE 8" SEWER-PIPE SHALL BE SDR-35 PVC UNLESS NOTED OTHERWISE.
  14. THE WATER-LINE SHALL BE INSTALLED TO HAVE A MINIMUM 30" COVER.
  15. ALL WATER-LINES AND SERVICES SHALL BE C900 SDR-25 PVC UNLESS NOTED OTHERWISE.
  16. ALL BENDS, WYES, AND TEES SHALL BE RESTRAINED PER OSWSA SPECIFICATIONS.
  17. #12 TRACER WIRE SHALL BE PLACED OVER PROPOSED WATER-LINE & MARKING TAPE IN THE TRENCH FOR EASE OF LOCATION.
  18. WHERE THERE IS A CROSSING WITH A DRAIN-LINE, THERE MUST BE A MINIMUM 18" SEPARATION WITH THE RCP OR DUCTILE IRON PIPE MUST BE USED.
  19. THE SITE CONTRACTOR SHALL VERIFY THE DEPTH OF THE SEWER SERVICE INSTALLED BY THE PLUMBER TO 3.0' OUTSIDE THE BUILDING BEFORE CONNECTING TO THE GRAVITY SYSTEM.
  20. THE SANITARY SEWER SYSTEM IS DESIGNED TO MEET THE 50 YEAR FLOOD ELEVATION.
  21. ALL MANHOLES SHALL HAVE NON-VORTEX INFLOW PROTECTORS.

REMAINING PORTION OF  
 TMS 066-00-01-018  
 N/F JAMES WINBURN  
 DEED BOOK 1895, PAGE 1254



CLIENT:

**A NEW MIDDLE SCHOOL FOR Horry COUNTY**  
 Horry County School District

PROJECT NO: 9915

DATE: JUNE 25, 2001

REVISIONS:

TITLE: WATER PLAN

SHEET:

C500



THIS DRAWING IS FOR INFORMATIONAL PURPOSES ONLY. THE CONTRACTOR MUST FIELD VERIFY EXISTING CONDITIONS

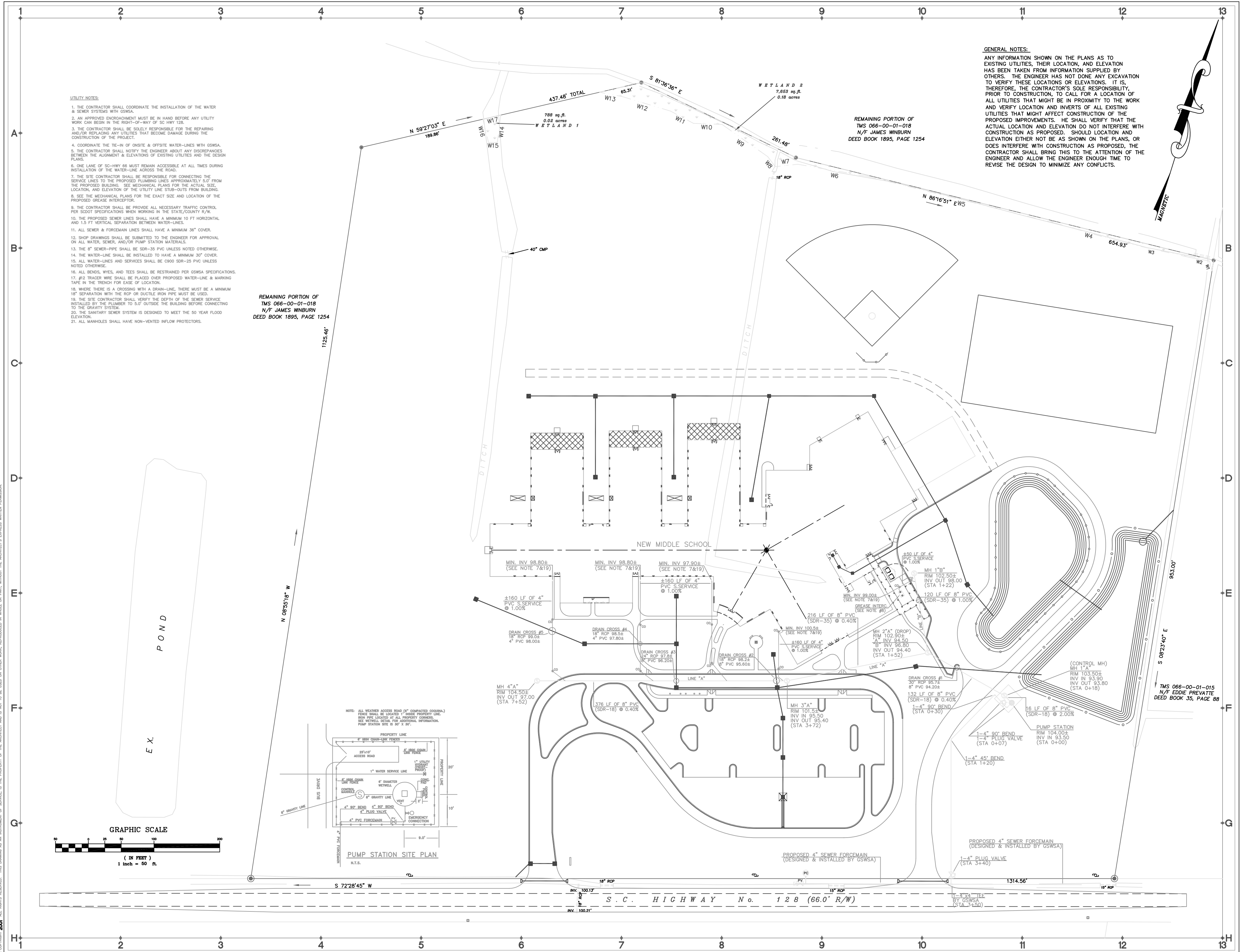
**UTILITY NOTES:**

1. THE CONTRACTOR SHALL COORDINATE THE INSTALLATION OF THE WATER & SEWER SYSTEMS WITH GSWSA.
2. AN APPROVED ENCROACHMENT MUST BE IN HAND BEFORE ANY UTILITY WORK CAN BEGIN IN THE RIGHT-OF-WAY OF SC HWY 128.
3. THE CONTRACTOR SHALL BE SOLELY RESPONSIBLE FOR THE REPAIRING AND/OR REPLACING ANY UTILITIES THAT BECOME DAMAGE DURING THE CONSTRUCTION OF THE PROJECT.
4. COORDINATE THE TIE-IN OF ONSITE & OFFSITE WATER-LINES WITH GSWSA.
5. THE CONTRACTOR SHALL NOTIFY THE ENGINEER ABOUT ANY DISCREPANCIES BETWEEN THE ALIGNMENT & ELEVATIONS OF EXISTING UTILITIES AND THE DESIGN PLANS.
6. ONE LANE OF SC-HWY 66 MUST REMAIN ACCESSIBLE AT ALL TIMES DURING INSTALLATION OF THE WATER-LINE ACROSS THE ROAD.
7. THE SITE CONTRACTOR SHALL BE RESPONSIBLE FOR CONNECTING THE SERVICE LINES TO THE PROPOSED PLUMBING LINES APPROXIMATELY 5.0' FROM THE PROPOSED BUILDING. SEE MECHANICAL PLANS FOR THE ACTUAL SIZE, LOCATION, AND ELEVATION OF THE UTILITY LINE STRIP-OUTS FROM BUILDING.
8. SEE THE MECHANICAL PLANS FOR THE EXACT SIZE AND LOCATION OF THE PROPOSED GREASE INTERCEPTOR.
9. THE CONTRACTOR SHALL PROVIDE ALL NECESSARY TRAFFIC CONTROL PER SDOT SPECIFICATIONS WHEN WORKING IN THE STATE/COUNTY R/W.
10. THE PROPOSED SEWER LINES SHALL HAVE A MINIMUM 10 FT HORIZONTAL AND 1.5 FT VERTICAL SEPARATION BETWEEN WATER-LINES.
11. ALL SEWER & FORCEMAIN LINES SHALL HAVE A MINIMUM 36" COVER.
12. SHOP DRAWINGS SHALL BE SUBMITTED TO THE ENGINEER FOR APPROVAL ON ALL WATER, SEWER, AND/OR PUMP STATION MATERIALS.
13. THE 8" SEWER-PIPE SHALL BE SDR-35 PVC UNLESS NOTED OTHERWISE.
14. THE WATER-LINE SHALL BE INSTALLED TO HAVE A MINIMUM 30" COVER.
15. ALL WATER-LINES AND SERVICES SHALL BE C900 SDR-25 PVC UNLESS NOTED OTHERWISE.
16. ALL BENDS, WYES, AND TEES SHALL BE RESTRAINED PER GSWSA SPECIFICATIONS.
17. #2 TRACER WIRE SHALL BE PLACED OVER PROPOSED WATER-LINE & MARKING TAPE IN THE TRENCH FOR EASE OF LOCATION.
18. WHERE THERE IS A CROSSING WITH A DRAIN-LINE, THERE MUST BE A MINIMUM 18" SEPARATION WITH THE RCP OR DUCTILE IRON PIPE MUST BE USED.
19. THE SITE CONTRACTOR SHALL VERIFY THE DEPTH OF THE SEWER SERVICE INSTALLED BY THE PLUMBER TO 5.0' OUTSIDE THE BUILDING BEFORE CONNECTING TO THE GRAMITY SYSTEM.
20. THE SANITARY SEWER SYSTEM IS DESIGNED TO MEET THE 50 YEAR FLOOD ELEVATION.
21. ALL MANHOLES SHALL HAVE NON-VENTED INFLOW PROTECTORS.

REMAINING PORTION OF  
TMS 066-00-01-018  
N/F JAMES WINBURN  
DEED BOOK 1895, PAGE 1254

**GENERAL NOTES:**

ANY INFORMATION SHOWN ON THE PLANS AS TO EXISTING UTILITIES, THEIR LOCATION, AND ELEVATION HAS BEEN TAKEN FROM INFORMATION SUPPLIED BY OTHERS. THE ENGINEER HAS NOT DONE ANY EXCAVATION TO VERIFY THESE LOCATIONS OR ELEVATIONS. IT IS, THEREFORE, THE CONTRACTOR'S SOLE RESPONSIBILITY, PRIOR TO CONSTRUCTION, TO CALL FOR A LOCATION OF ALL UTILITIES THAT MIGHT BE IN PROXIMITY TO THE WORK AND VERIFY LOCATION AND INVERTS OF ALL EXISTING UTILITIES THAT MIGHT AFFECT CONSTRUCTION OF THE PROPOSED IMPROVEMENTS. HE SHALL VERIFY THAT THE ACTUAL LOCATION AND ELEVATION DO NOT INTERFERE WITH CONSTRUCTION AS PROPOSED. SHOULD LOCATION AND ELEVATION EITHER NOT BE AS SHOWN ON THE PLANS, OR DOES INTERFERE WITH CONSTRUCTION AS PROPOSED, THE CONTRACTOR SHALL BRING THIS TO THE ATTENTION OF THE ENGINEER AND ALLOW THE ENGINEER ENOUGH TIME TO REVISE THE DESIGN TO MINIMIZE ANY CONFLICTS.



CLIENT:

A NEW  
AYNOR MIDDLE SCHOOL  
FOR Horry COUNTY  
Horry County School District

PROJECT NO: 9915

DATE: JUNE 25, 2001

REVISIONS:

TMS 066-00-01-015  
N/F EDDIE PREVATTE  
DEED BOOK 35, PAGE 88

TITLE:  
SEWER PLAN

SHEET:

C501

COPYRIGHT 2001 ALL RIGHTS RESERVED. THIS DRAWING IS AN INSTRUMENT OF SERVICE, IS THE PROPERTY OF THE ARCHITECT AND IS NOT TO BE USED ON OTHER WORK, REPRODUCED IN WHOLE OR PART, WITHOUT THE ARCHITECT'S EXPRESS WRITTEN PERMISSION.