

● & ▶ 1 Drop for speaker @ 96" AFF. With biscuit box and blue keystone.

▶ 2 Drops for Phone and Data. 1 drop @ 48" AFF with phone faceplate with blue keystone. Raceway down to 1 drop @ 18" AFF with single faceplate whit yellow keystone.

▶ 3 Drops for TV, Speaker and Wireless. 96" AFF. 4 port faceplate with 1 blank. 1 Black, 1 Blue and 1 Purple Keystone

● & ▶ 2 Data Drops @ 18" AFF. 2 port faceplate. Yellow keystones.

▶ 4 Data Drops @ 18" AFF. 4 port faceplate. Yellow Keystones

■ 1 Drop for Camera placed near camera on wall with biscuit box with red keystone

★ New IDF

★ Existing IDF. Racks will stay and be reused

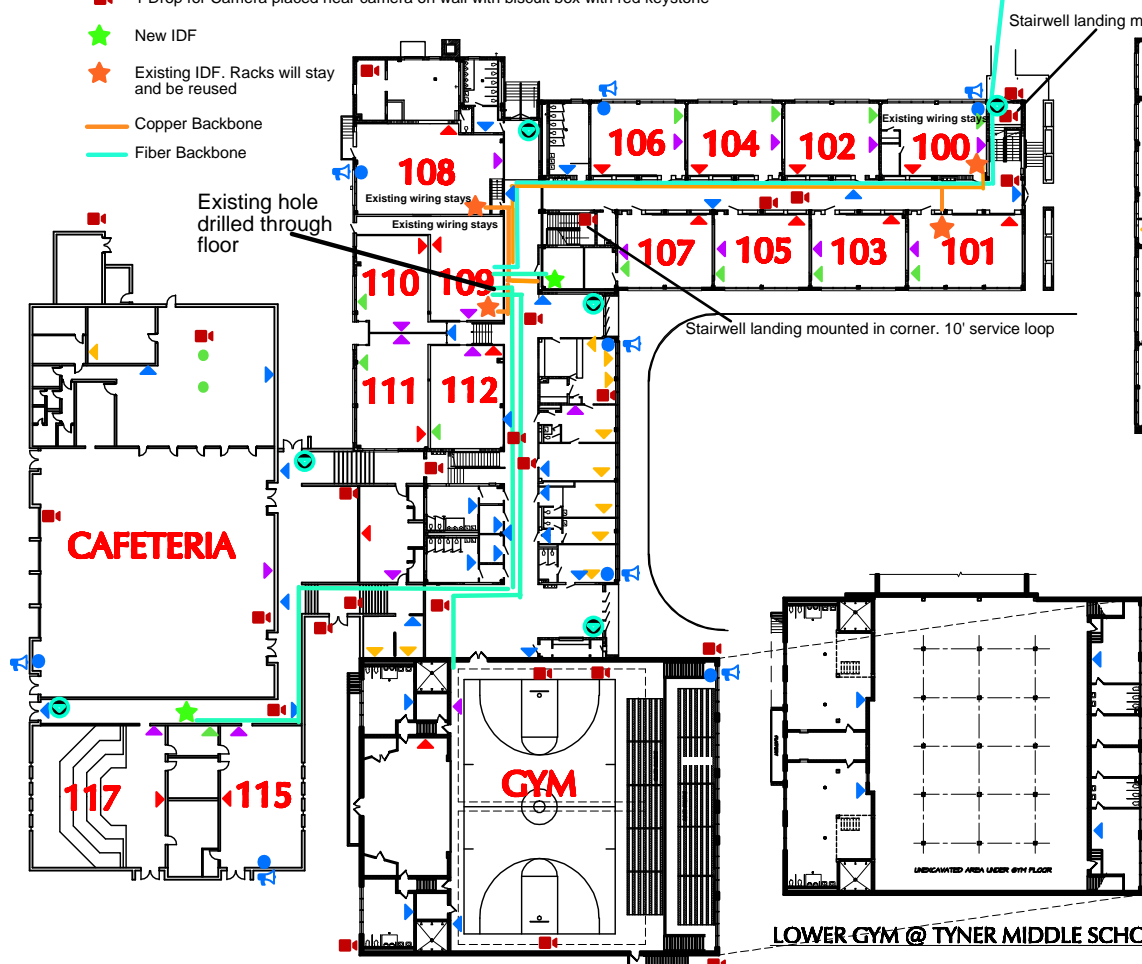
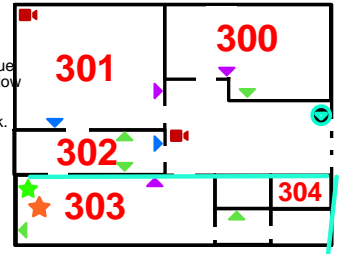
— Copper Backbone

— Fiber Backbone

● 2 Drops for door access mounted at 88" AFF or at door access panel. 2 port biscuit box with green keystone.

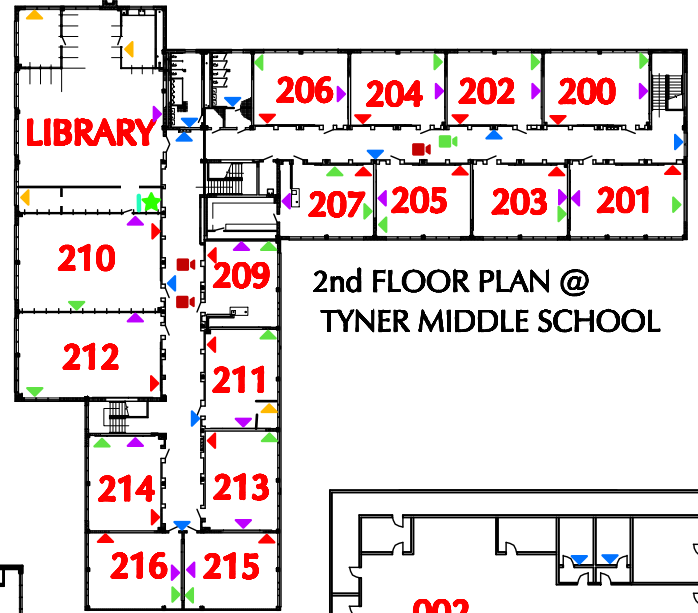
▶ Outside penetrations will be made will 1/2" hole and filled mold-able fire putty for future applications.

Total = 424 / 39 of those will be PLENUM in cafe and band area / 41 total will be cat6A ( 4 of those are in plenum area)

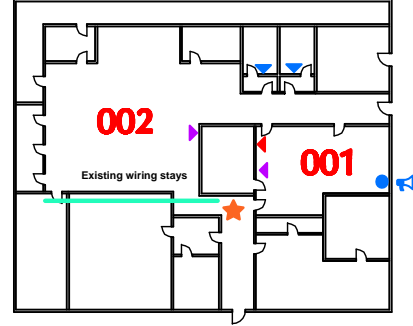


Stairwell landing mounted in corner. 10' service loop

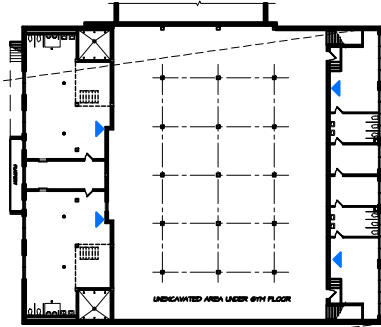
Stairwell landing mounted in corner. 10' service loop



2nd FLOOR PLAN @ TYNER MIDDLE SCHOOL



LOWER GYM @ TYNER MIDDLE SCHOOL



LOWER-GYM @ TYNER MIDDLE SCHOOL

1st FLOOR PLAN @ TYNER MIDDLE SCHOOL