

BOARD OF COMMISSIONERS

Meetings Second Tuesday

MARTIN H. MOSELEY, JR.
Chairman

SHANITA BRYANT

BETTY C. HILL

ROY LEWIS

WADE YODER

MICHAELA JONES
County Administrator

APRIL H. HODGES
County Clerk

Peach County

213 Persons Street
Fort Valley, Georgia 31030
Phone 478-825-2535
Fax 478-825-2678

COUNTY OFFICIALS

KIM WILSON
Probate Judge

JOE WILDER
Clerk of Superior Court

TERRY DEESE
Sheriff

W. L. BROWN
Tax Commissioner

KERRY ROOKS
Coroner

LAURENS C. LEE
Magistrate

RFB 20-005 AMBULANCE – EMS DEPARTMENT Addendum No. 1

JAN 10TH, 2020

This document serves as an Addendum No.1 to the RFB 20-005 posted by the Peach County Board of Commissioners. The Peach County hereby agree to add this Attachment – A as part of the Specifications of this solicitation.

- Exhibit 1
- Exhibit 2
- Exhibit 3
- Exhibit 4
- Exhibit 5
- Exhibit 6
- Exhibit 7
- Exhibit 8
- Exhibit 9

PEACH COUNTY
Board of Commissioners

*All remaining terms and conditions of the solicitation remain unchanged.

*Questions regarding this solicitation must be in writing and sent to:
Daniel G. Flores at daniel-garciaflores@peachcounty.net.

*For more information about this solicitation, please call 478-827-3150

Exhibit 1 - Passenger Exterior

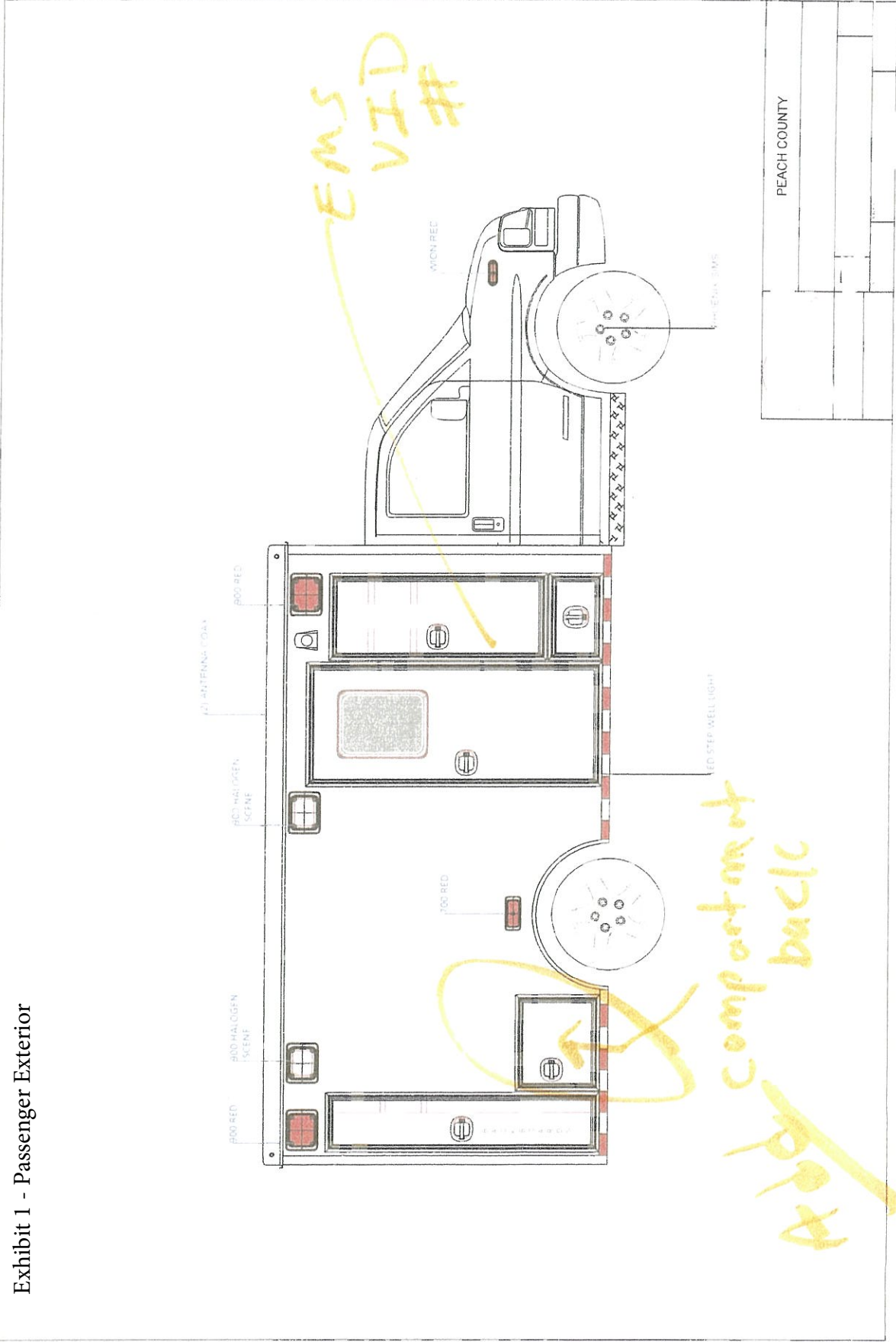
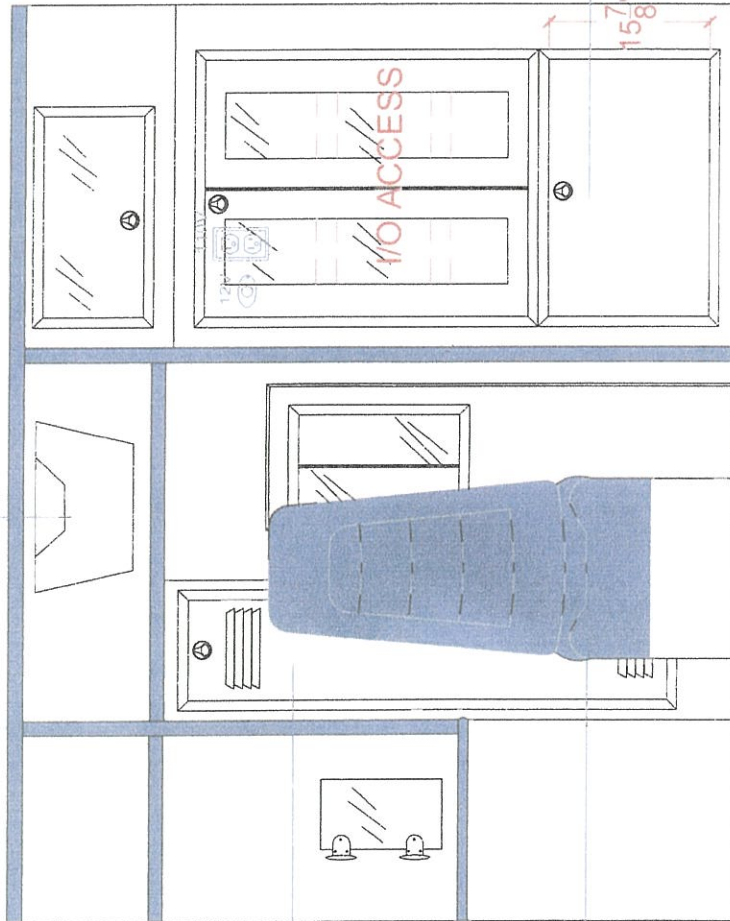


Exhibit 2 -Front Interior

12V HOSELINE SYSTEM
DUCTED
AUX CONDENSER
DIGITAL THERMOSTAT



RC TRONICS
POWER PANEL

WISE ATTENDANT SEAT
W/ CHILD SAFETY
BOX BASE
BLUE UPHOLSTERY

*Better lock
handle*

DRUG DRAWER
DRUG BOX:
20 ³/₈" L x 11 ¹/₂" W x 12 ³/₄" D

PEACH COUNTY

2018 CHEVY G4500 CHASSIS:

STANDARD OPTIONS

- SMOOTH COMPTS VENTED W/ DRAIN HOLES SCORPION COAT GRAY
- STD DIP PACKAGE KICK PANELS, STONE GUARDS, BUMPER W/ CENTER FLIP UP AND GRIP INSERT, DIP ENTRY, STEP, DIP, CAB STEPS W/ GRIP
- EXTRUDED DOORS, SMOOTH PANELS, EBERHARD HANDLES, DRIP RAILS, SPRING HOLDBACKS, FIXED WINDOWS
- POLYFIBER INSULATION
- MUD FLAPS
- UNDERCOATING
- ALUM FENDERETTES
- FUEL BOWL W/ SPLASH GUARD
- EXHAUST VENT
- LICENSE PLATE W/ LED LIGHT
- C-CHANNEL RED/ WHITE REFLECTIVE
- HEAT SHIELDS
- CAST GRABBERS

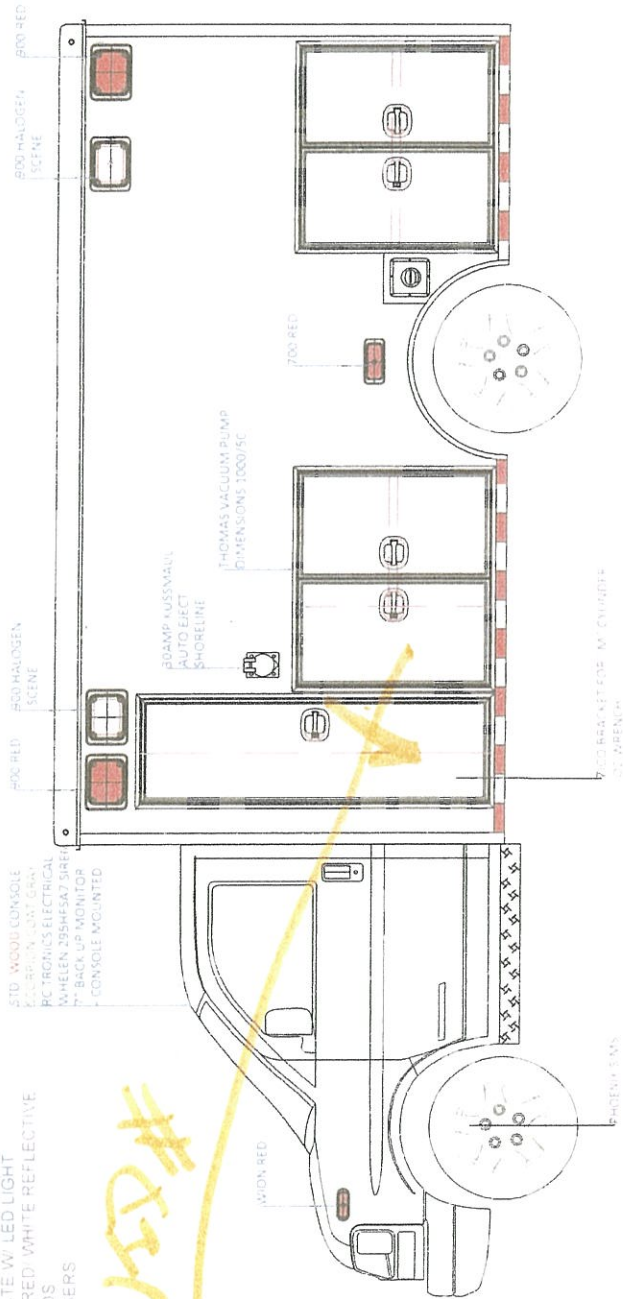
- STD. WOOD CONSOLE
- ELECTRICAL COAT GRAY
- WHEELS 295/45R17 SHRE
- 7" BACK UP MONITOR
- CONSOLE MOUNTED

EMS USED #

Exhibit 3 - Driver Exterior

SPECIAL OPTIONS

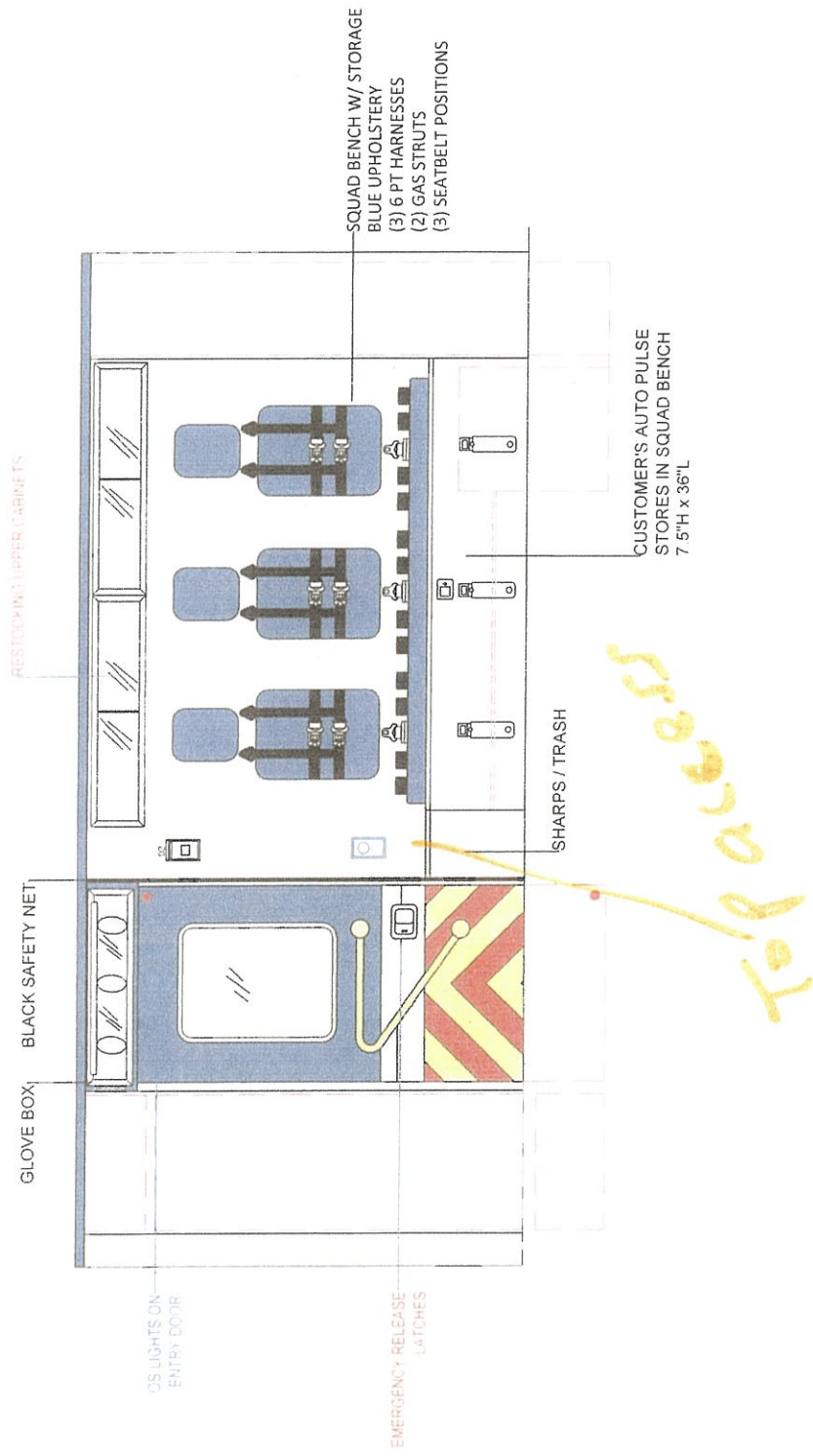
- TURTLE TILE ON ALL FLOORS AND SHELVES
- 5LB FIRE EXTINGUISHER - SHIP LOOSE
- 20LB ABC DRY CHEMICAL EXTINGUISHER - SHIP LOOSE
- EMERGENCY RELEASE LATCHES



- ELECTRICAL**
- WIRE ENGINE BLOCK HEATER - SHORELINE SUPPLIED
- BEHIND DRIVER SEAT
- HANDHELD SPOTLIGHT - HARDWIRED
- (2) 12V RADIO PREWIRE - BEHIND DRIVER SEAT
- BACKUP ALARM
- SINGLE COMPARTMENT LIGHTS
- ICC MARKER LIGHTS
- STEP WELL LIGHT
- MASTER DISCONNECT SWITCH
- CLEAR LENSES

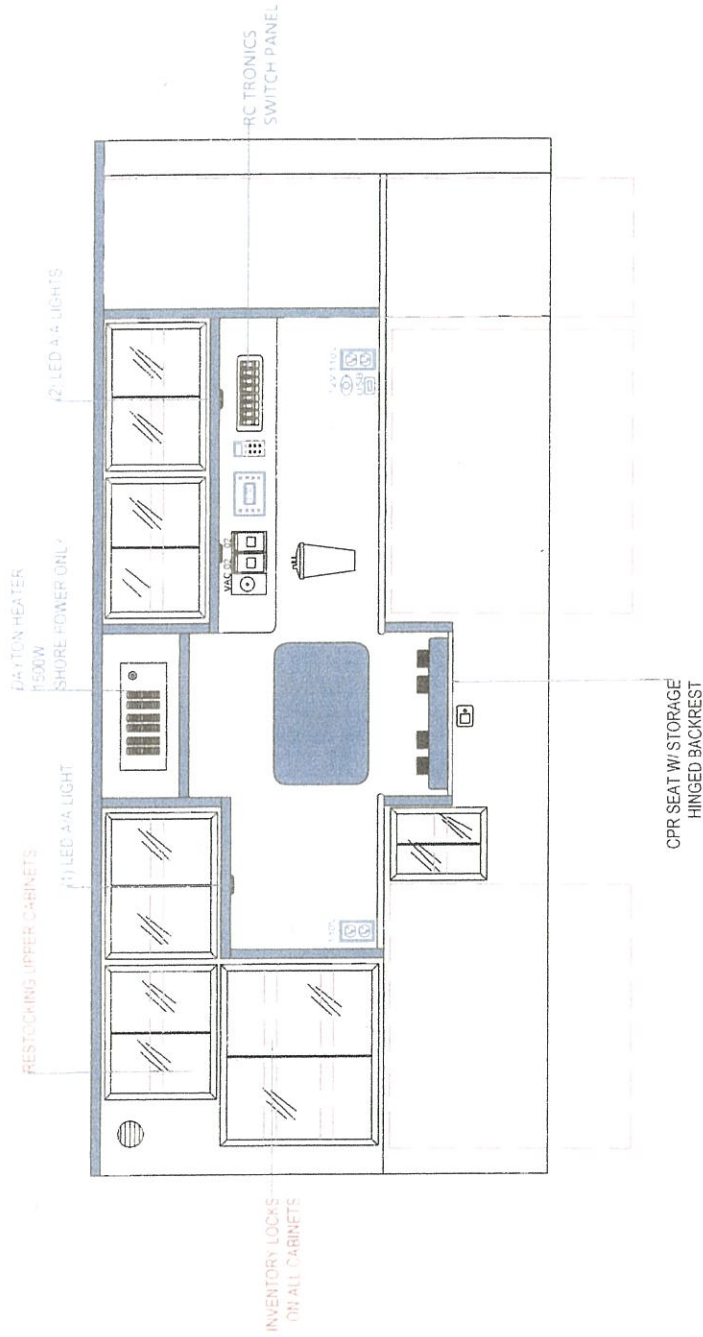
PEACH COUNTY	
	5-21-19

Exhibit 4 - Passenger Interior



PEACH COUNTY	
	5-21-19

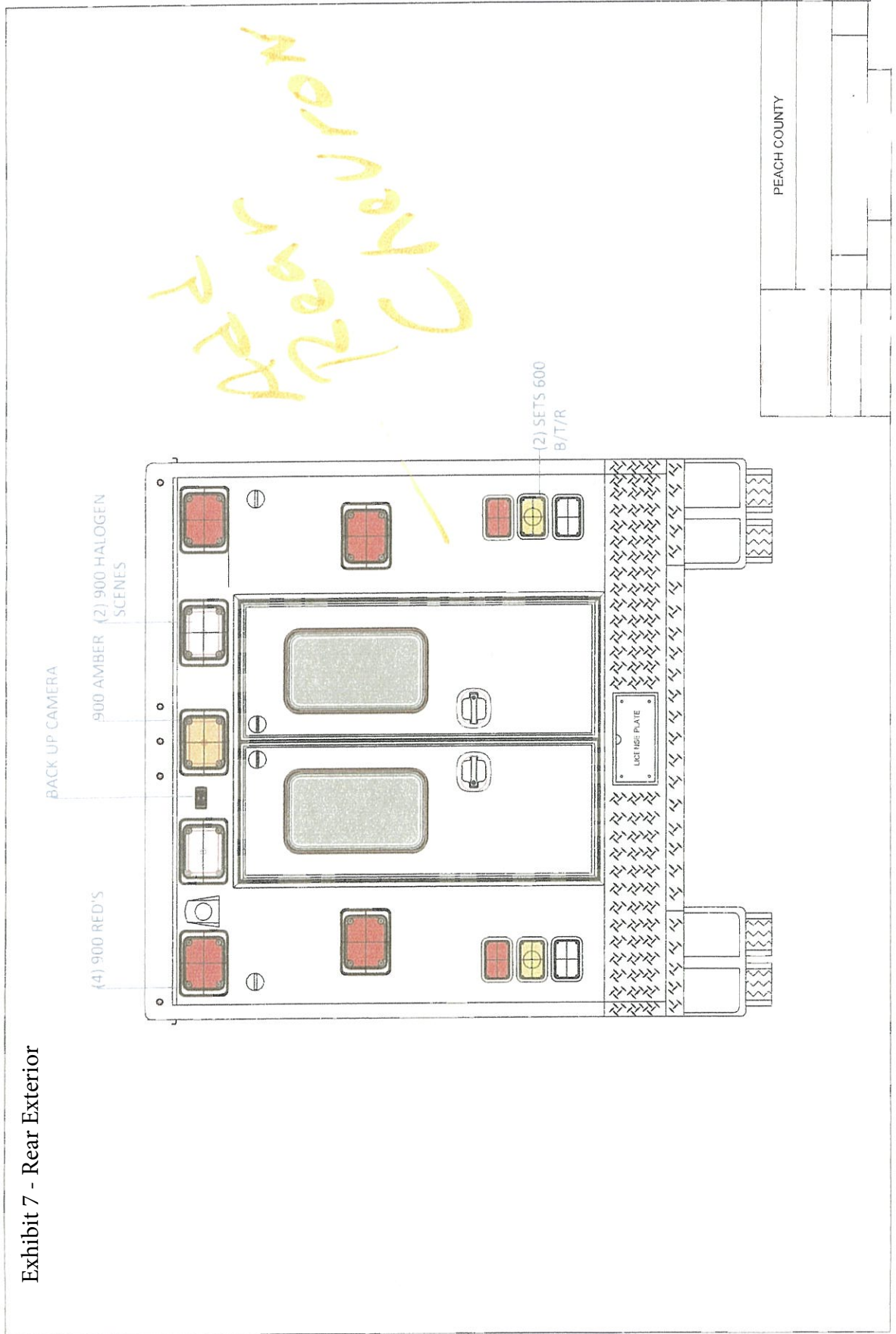
Exhibit 5 - Driver Interior



- BLACK MATTING ON SHELVES
- CABINETS- WOOD, CLEAR PLEXI, WHITE / BLUE TWO TONE FORMICA, -BLUE TRIM, WHITE COUNTERTOPS, COMPOSITE SHELVES
- CUSTOMER SUPPLIED POWER LOAD
- FLOORS- COMPOSITE, GRAY LONPLATE
- DOORS- BLUE UPHOLSTERY, WHITE FORMICA, RED/ YELLOW CHEVRON
- CEILING- GLOSSY WHITE FIBERGLASS

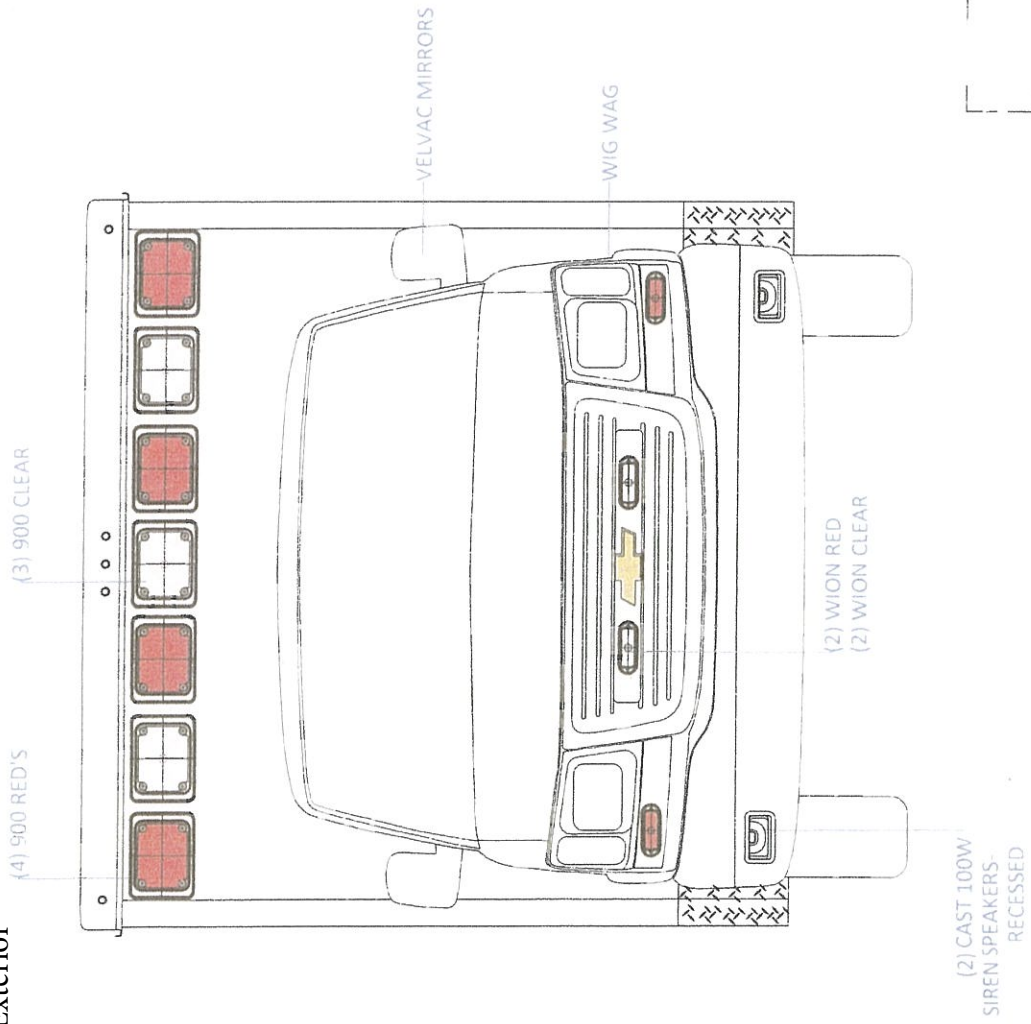
PEACH COUNTY

Exhibit 7 - Rear Exterior

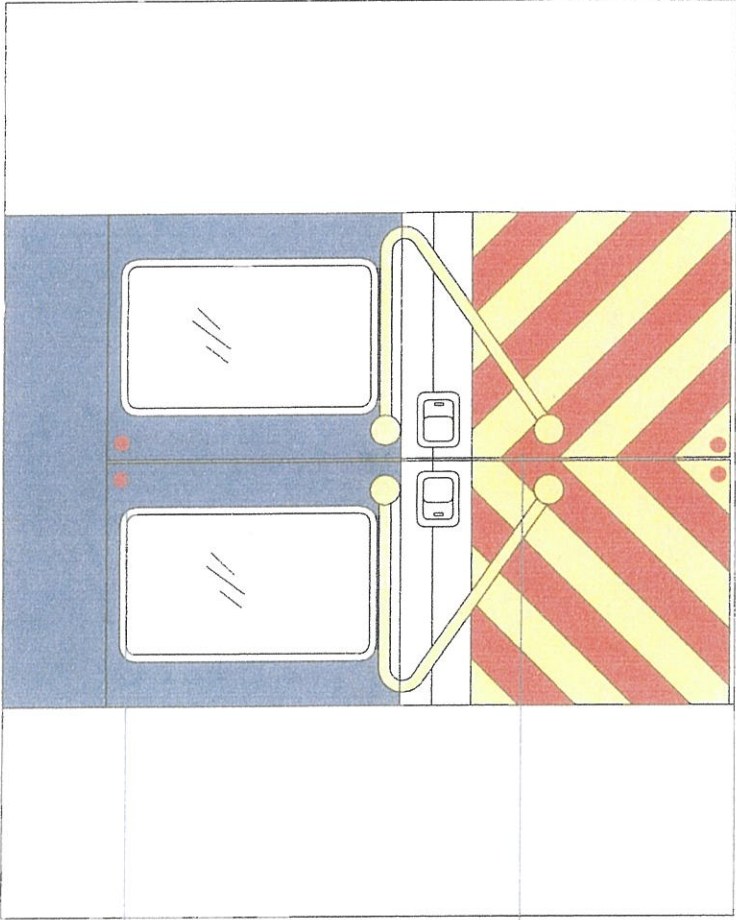


APR 2009

Exhibit 8 - Front Exterior



PEACH COUNTY



OS LIGHTS ON
ENTRY DOOR

EMERGENCY RELEASE
LATCHES

PEACH COUNTY	

Exhibit 9 - Rear Interior