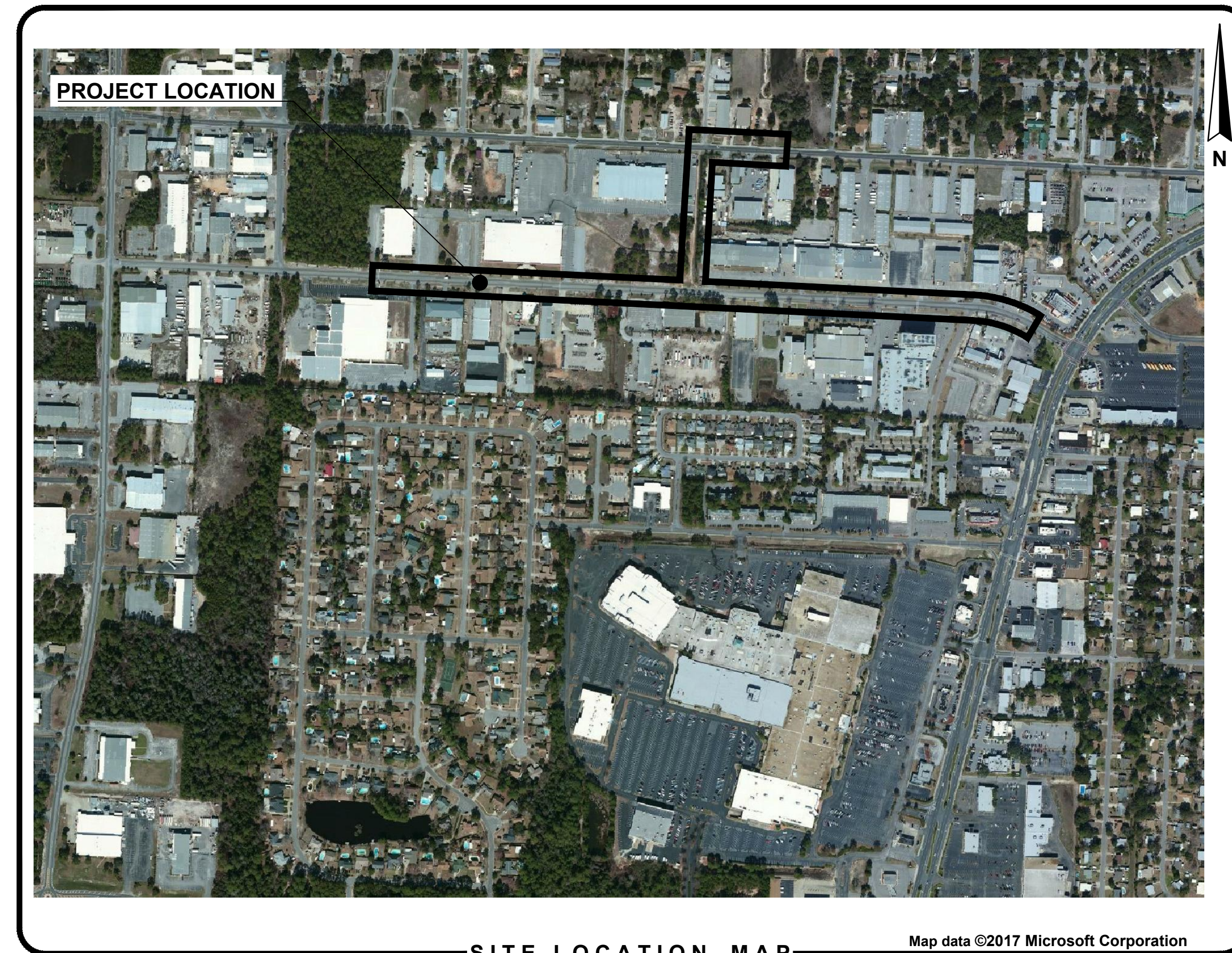
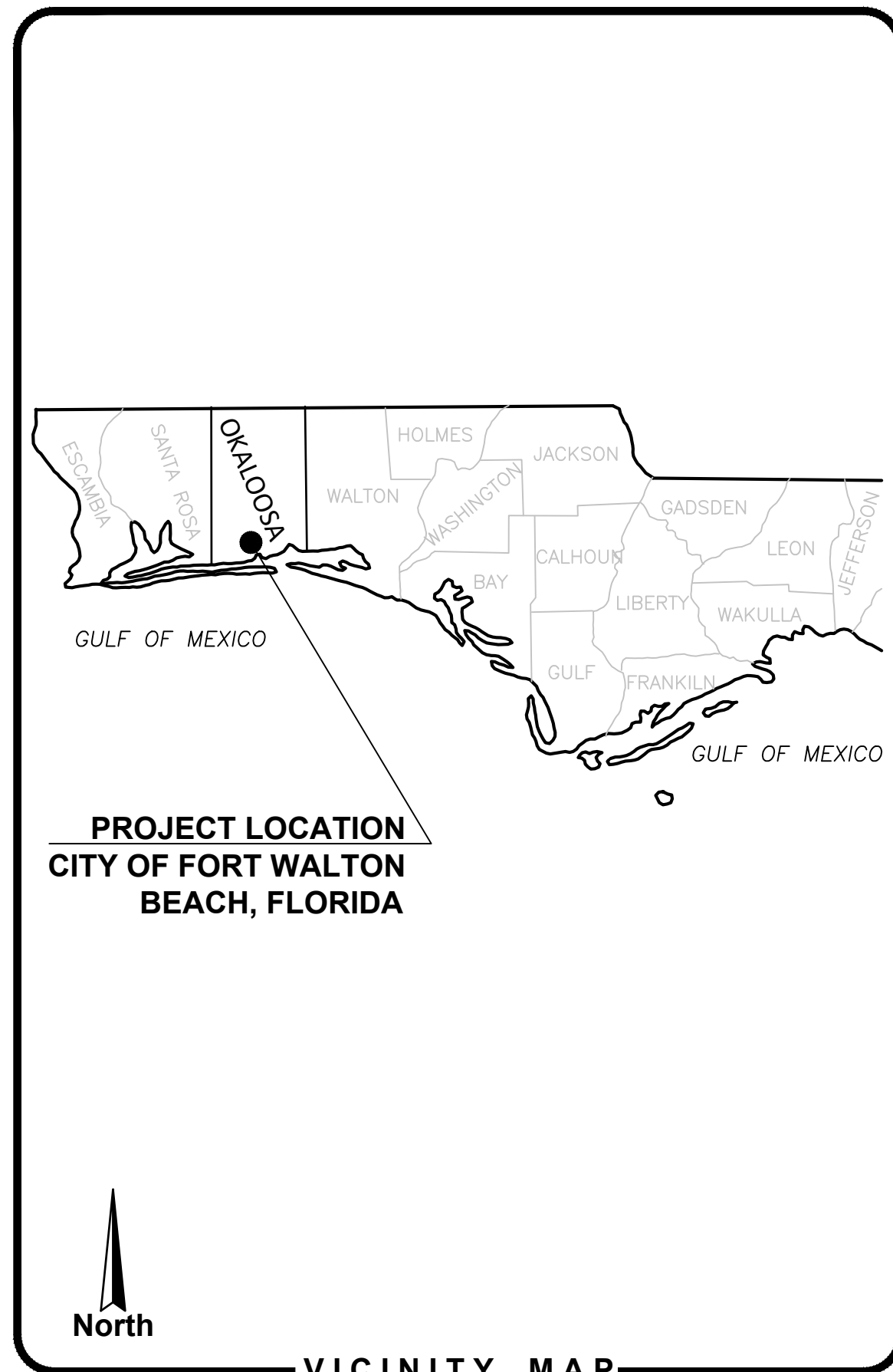


# CIVIL DESIGN DRAWINGS FOR: CITY OF FORT WALTON BEACH ANCHORS STREET NORTHWEST STORMWATER IMPROVEMENTS



INDEX OF DRAWINGS	
SHEET NO.	SHEET TITLE
G1	COVER SHEET
G2	GENERAL NOTES
G3	SUMMARY OF QUANTITIES
C1	MASTER EXISTING CONDITIONS & DEMOLITION PLAN
C2	EXISTING CONDITIONS & DEMOLITION PLAN - PHASE I
C3	EXISTING CONDITIONS & DEMOLITION PLAN - PHASE II
C4	EXISTING CONDITIONS & DEMOLITION PLAN - PHASE III
C5	EXISTING STORM PIPE AND STRUCTURE TABLES
C6	DRAINAGE PLAN - PHASE I (SHEET 1 OF 2)
C7	DRAINAGE PLAN - PHASE I (SHEET 2 OF 2)
C8	DRAINAGE PLAN - PHASE II
C9	DRAINAGE PLAN - PHASE III (SHEET 1 OF 2)
C10	DRAINAGE PLAN - PHASE III (SHEET 2 OF 2)
C11	STORM PIPE AND STRUCTURE TABLES
C12	MISCELLANEOUS DETAILS (SHEET 1 OF 2)
C13	MISCELLANEOUS DETAILS (SHEET 2 OF 2)

**PREPARED FOR:**



**CITY OF FORT WALTON BEACH**  
107 MIRACLE STRIP PARKWAY SW  
FORT WALTON BEACH, FL 32548

**CITY COUNCIL MEMBERS AND STAFF**

DICK RYNEARSON	MAYOR
NIC ALLEGRETTO	SEAT I
MIKE HOLMES	SEAT II
AMY JAMIESON	SEAT III
DIANE KELLER	SEAT IV
JOHN MEAD	SEAT V
DAVID SCHMIDT	SEAT VI
SCOTT SMITH	SEAT VII

**ENGINEER:**



**AVCON, INC.**  
ENGINEERS & PLANNERS  
320 BAYSHORE DRIVE, SUITE A - NICEVILLE, FL 32578-2425  
OFFICE: (850) 678-0050 - FAX: (850) 678-0040  
CORPORATE CERTIFICATE OF AUTHORIZATION NUMBER: 5057  
www.avconinc.com

**AVCON, INC.**  
ENGINEERS & PLANNERS  
320 BAYSHORE DRIVE, SUITE A  
NICEVILLE, FL 32578-2425  
OFFICE: (850) 678-0050  
FAX: (850) 678-0040  
CORPORATE CERTIFICATE OF AUTHORIZATION NUMBER: 5057  
www.avconinc.com

**AVCON**

TRANSFORMING TODAY'S IDEAS INTO TOMORROW'S REALITY

TONIA D. NATION  
FL LICENSE NO.: 64631  
FBPR CERTIFICATE OF AUTHORIZATION NO. 5057

NO.	DATE	REVISION	BY

**COVER SHEET**

**RELEASE FOR BID**

**ANCHORS STREET NORTHWEST STORMWATER IMPROVEMENTS**

PREPARED FOR  
CITY OF FORT WALTON BEACH, FLORIDA

DESIGNED BY: TDN/CAP  
DRAWN BY: CAP  
CHECKED BY: VCL  
APPROVED BY: VCL  
PROJECT NO: 2017.238.01  
DATE: JANUARY 2019

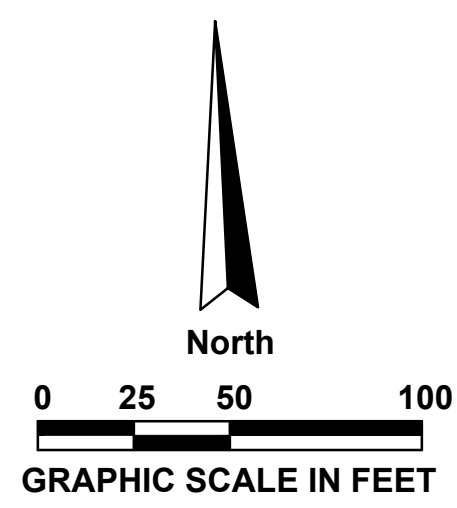
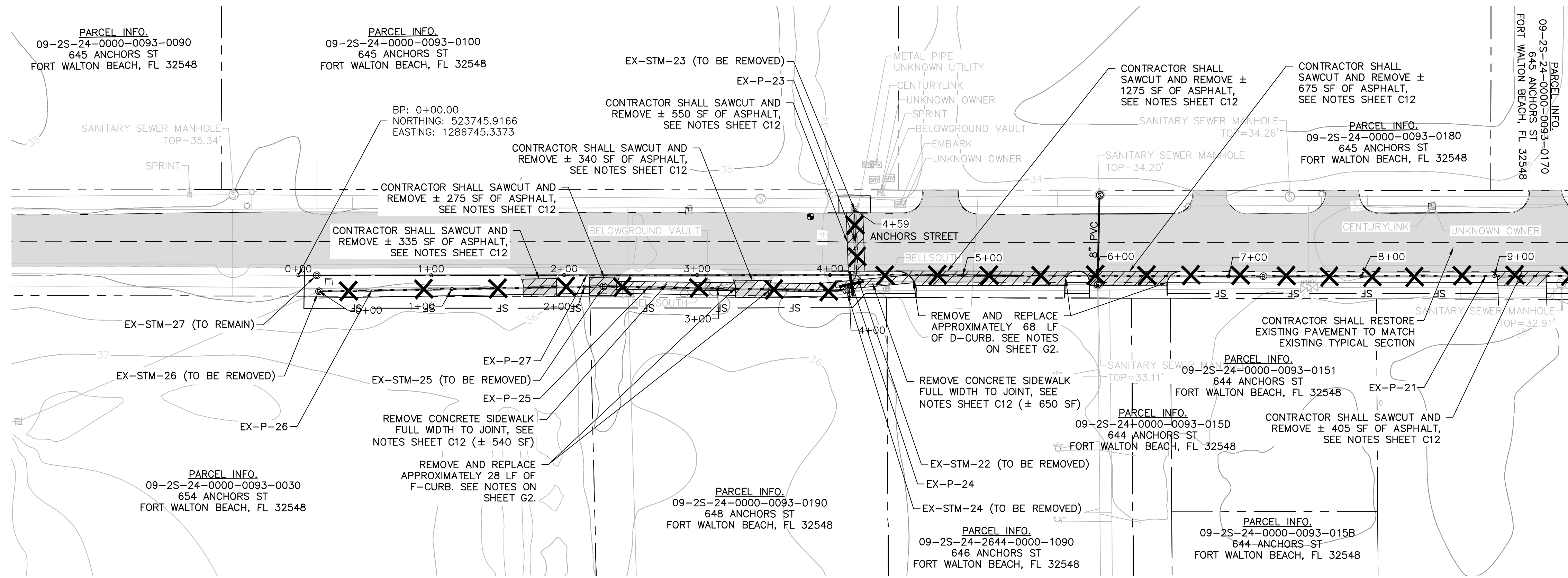
**SHEET NUMBER**  
**G1**

**RELEASE FOR BID**



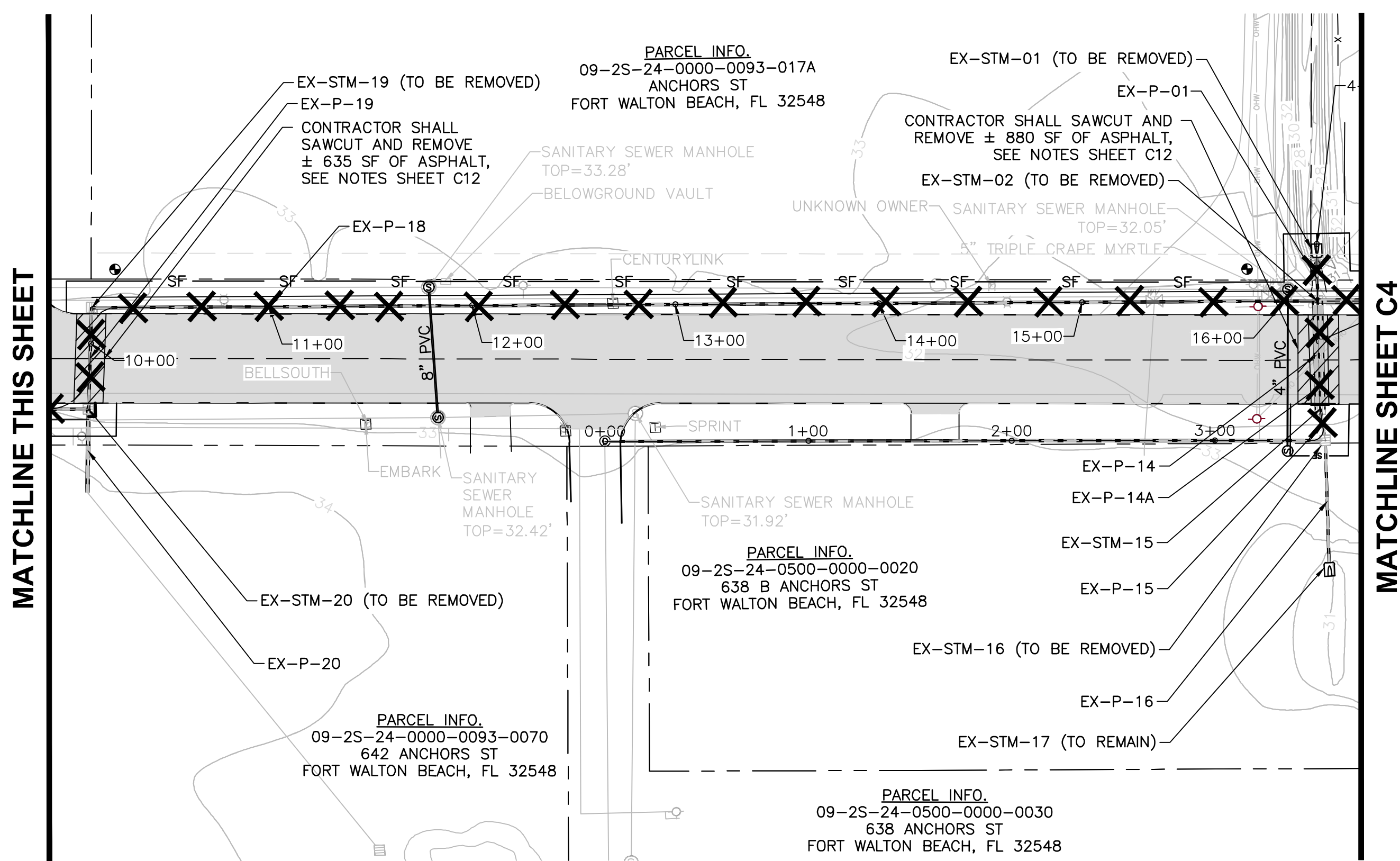






MATCHLINE THIS SHEET

N:\NICEVILLE-PROJECTS\238-CITY OF FWB\2017.238-01-ANCHORS STORMWATER REPAIR\000 CAD\17.238-01\_DEMO.DWG 12/10/2018 4:56 PM

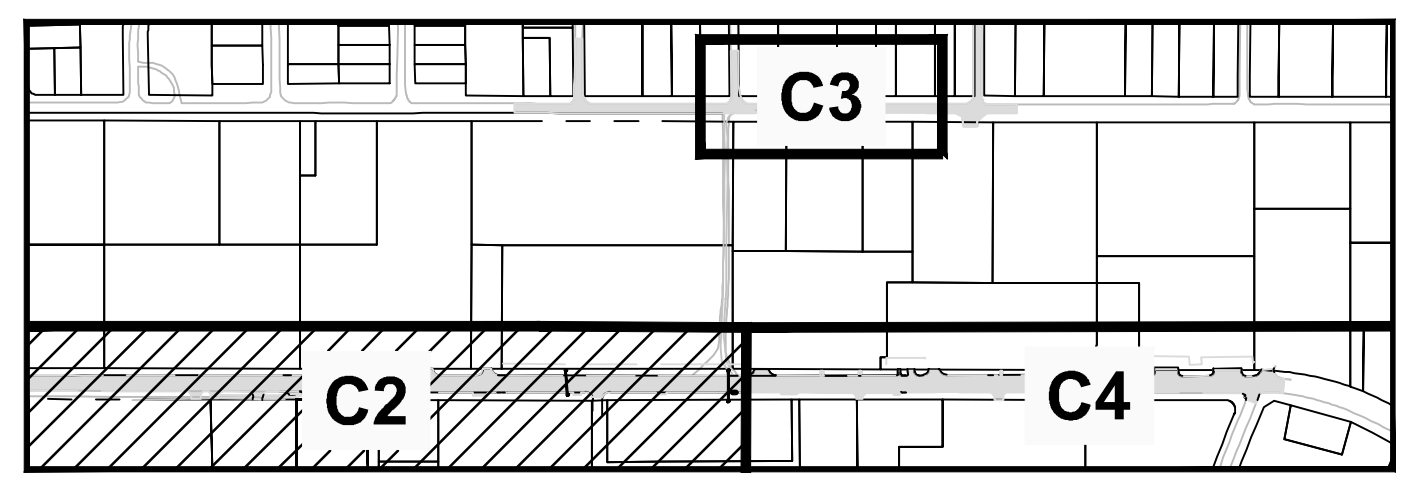


MATCHLINE THIS SHEET

MATCHLINE SHEET C4

LEGEND	
	PAVEMENT REMOVAL
	STORM PIPE TO BE REMOVED
	SILT-FENCE

- NOTES**
- CONTRACTOR SHALL PHASE DEMOLITION AND CONSTRUCTION OF ACCESS DRIVE CROSSINGS MAINTAINING ACCESS TO BUSINESSES DURING ALL TIMES.



**AVCON, INC.**  
 ENGINEERS & PLANNERS  
 320 BAYSHORE DRIVE, SUITE A  
 NICEVILLE, FL 32576-2425  
 OFFICE: (850) 678-0050  
 FAX: (850) 678-0040  
 CORPORATE CERTIFICATE OF AUTHORIZATION NUMBER: 5057  
 WWW.AVCONINC.COM

TRANSFORMING TODAY'S IDEAS INTO TOMORROW'S REALITY

TONIA D. NATION  
 FL LICENSE NO.: 64631  
 FBPR CERTIFICATE OF AUTHORIZATION NO. 5057

NO.	DATE	BY	REVISION

**EXISTING CONDITIONS & DEMOLITION PLAN - PHASE I**

RELEASE FOR BID

**ANCHORS STREET NORTHWEST STORMWATER IMPROVEMENTS**

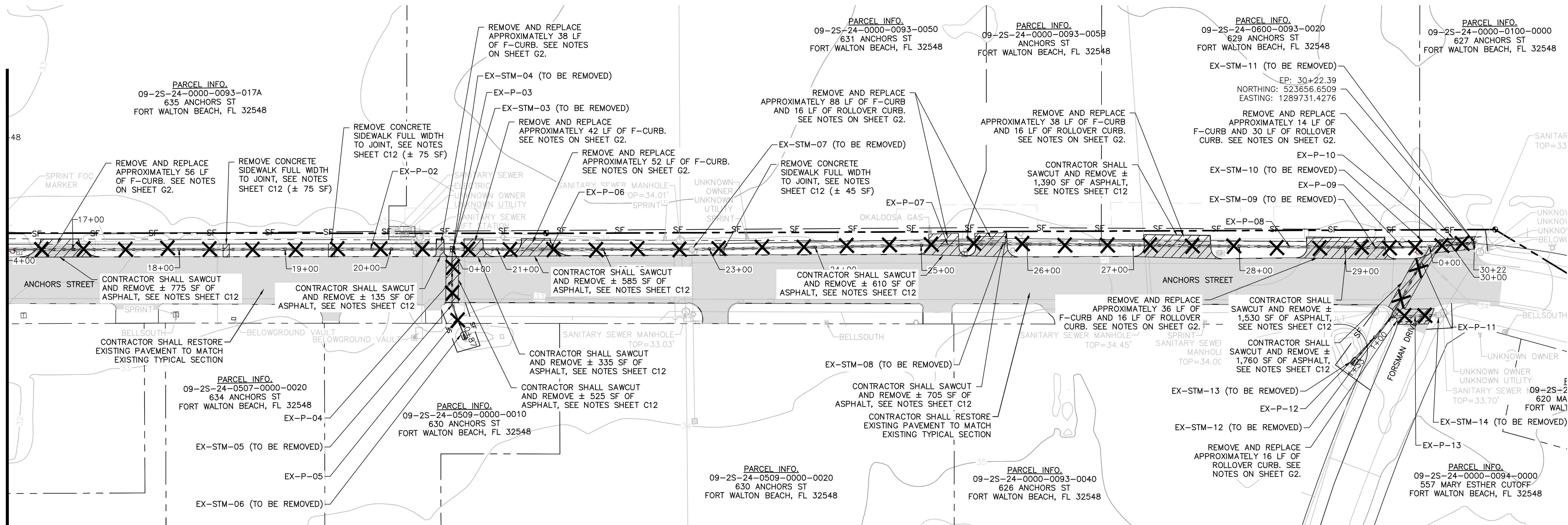
PREPARED FOR  
 CITY OF FORT WALTON BEACH, FLORIDA

DESIGNED BY: TDN/CAP  
 DRAWN BY: CAP  
 CHECKED BY: VCL  
 APPROVED BY: VCL  
 PROJECT NO: 2017.238.01  
 DATE: JANUARY 2019

**SHEET NUMBER**  
C2



MATCHLINE SHEET C2

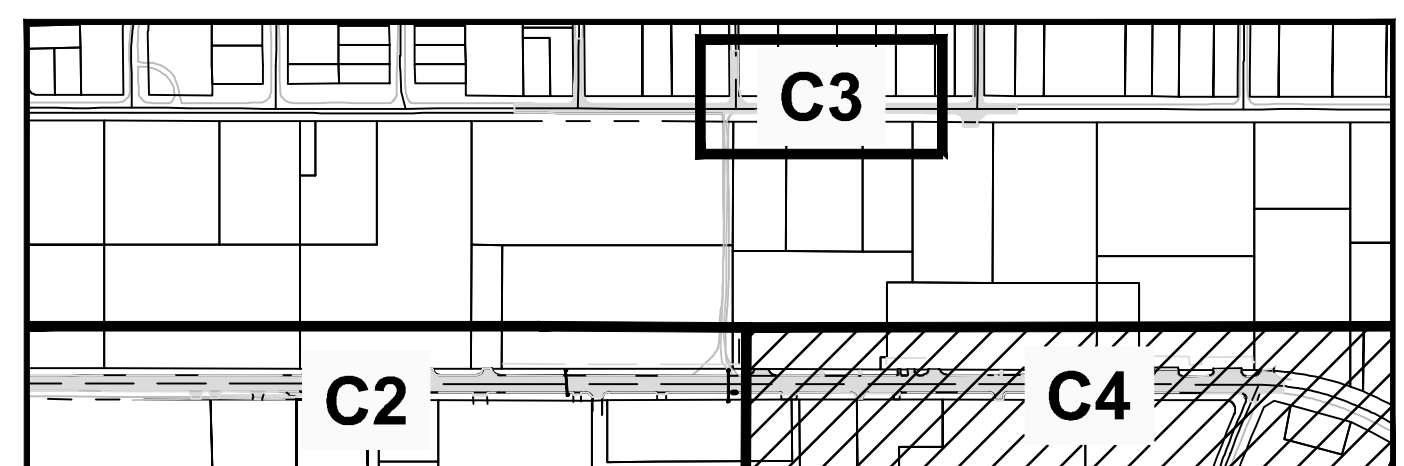


**NOTES**

- CONTRACTOR SHALL PHASE DEMOLITION AND CONSTRUCTION OF ACCESS DRIVE CROSSINGS MAINTAINING ACCESS TO BUSINESSES DURING ALL TIMES.

**LEGEND**

	PAVEMENT REMOVAL
	STORM PIPE TO BE REMOVED
	SILT-FENCE



**AVCON, INC.**  
 ENGINEERS & PLANNERS  
 320 BAYSHORE DRIVE, SUITE A  
 NICEVILLE, FL 32576-2425  
 OFFICE: (850) 678-0050  
 FAX: (850) 678-0040  
 CORPORATE CERTIFICATE OF AUTHORIZATION NUMBER: 5057  
 WWW.AVCONINC.COM

**TONIA D. NATION**  
 FL LICENSE NO.: 64631  
 FBPR CERTIFICATE OF AUTHORIZATION NO. 5057

NO.	DATE	REVISION	BY

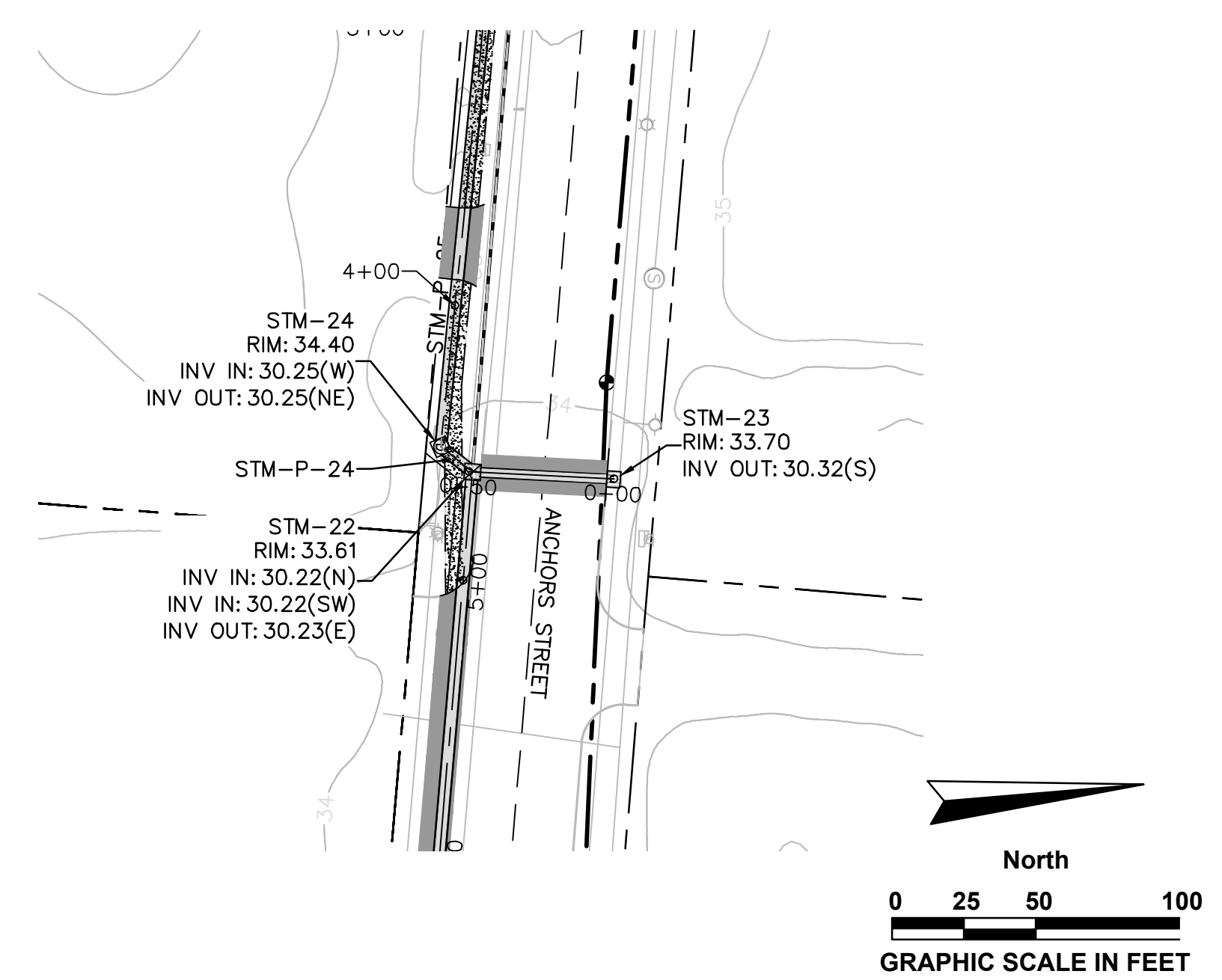
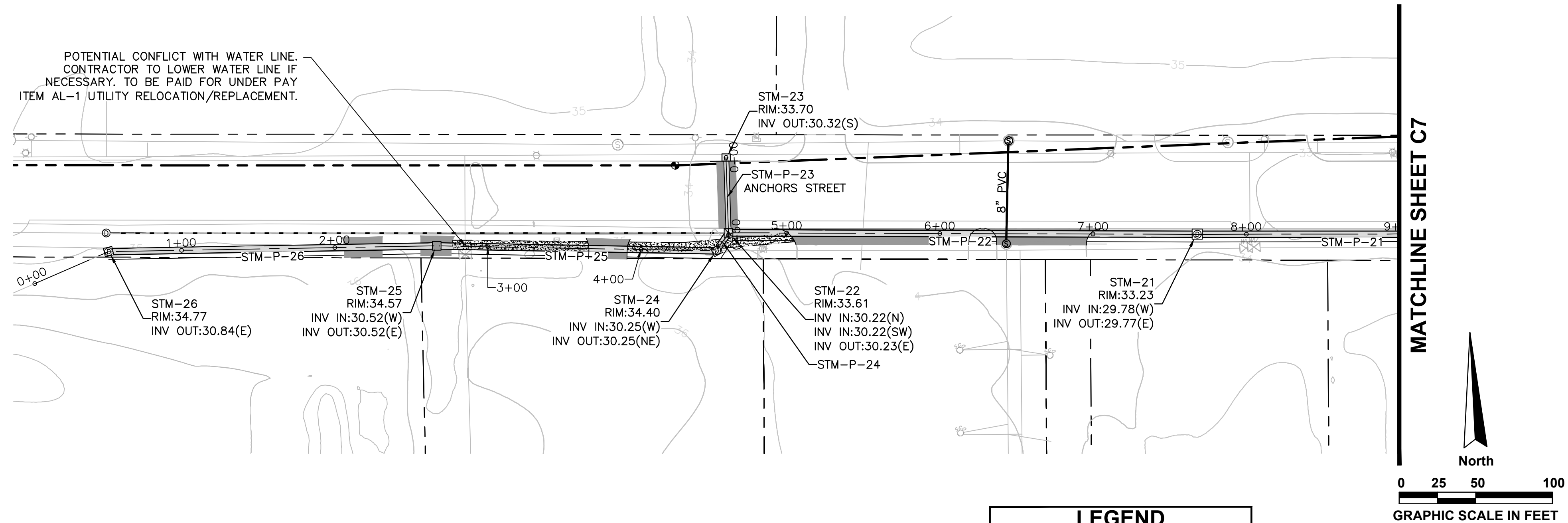
**EXISTING CONDITIONS & DEMOLITION PLAN - PHASE III**  
 RELEASE FOR BID

**ANCHORS STREET NORTHWEST STORMWATER IMPROVEMENTS**  
 PREPARED FOR  
 CITY OF FORT WALTON BEACH, FLORIDA

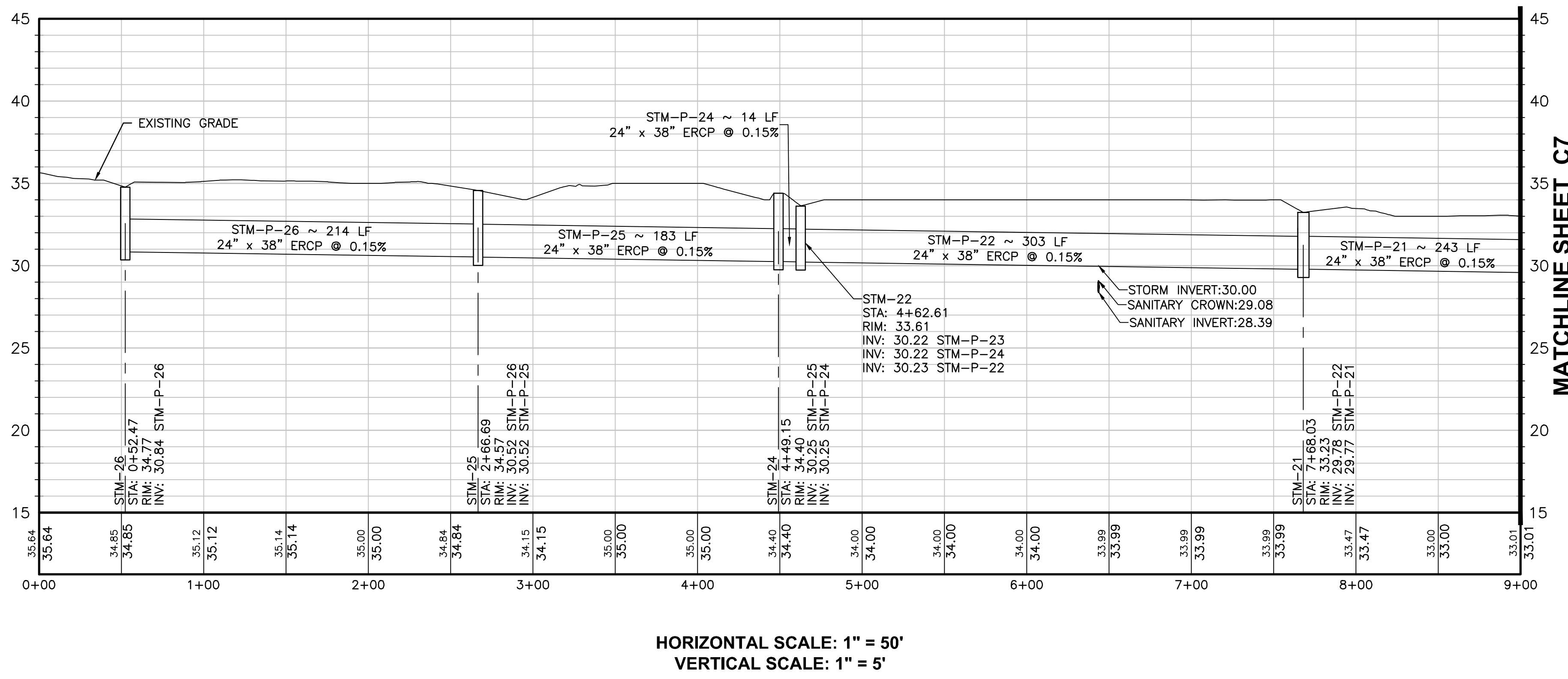
DESIGNED BY: TDN/CAP  
 DRAWN BY: CAP  
 CHECKED BY: VCL  
 APPROVED BY: VCL  
 PROJECT NO: 2017.238.01  
 DATE: JANUARY 2019

**SHEET NUMBER**  
**C4**

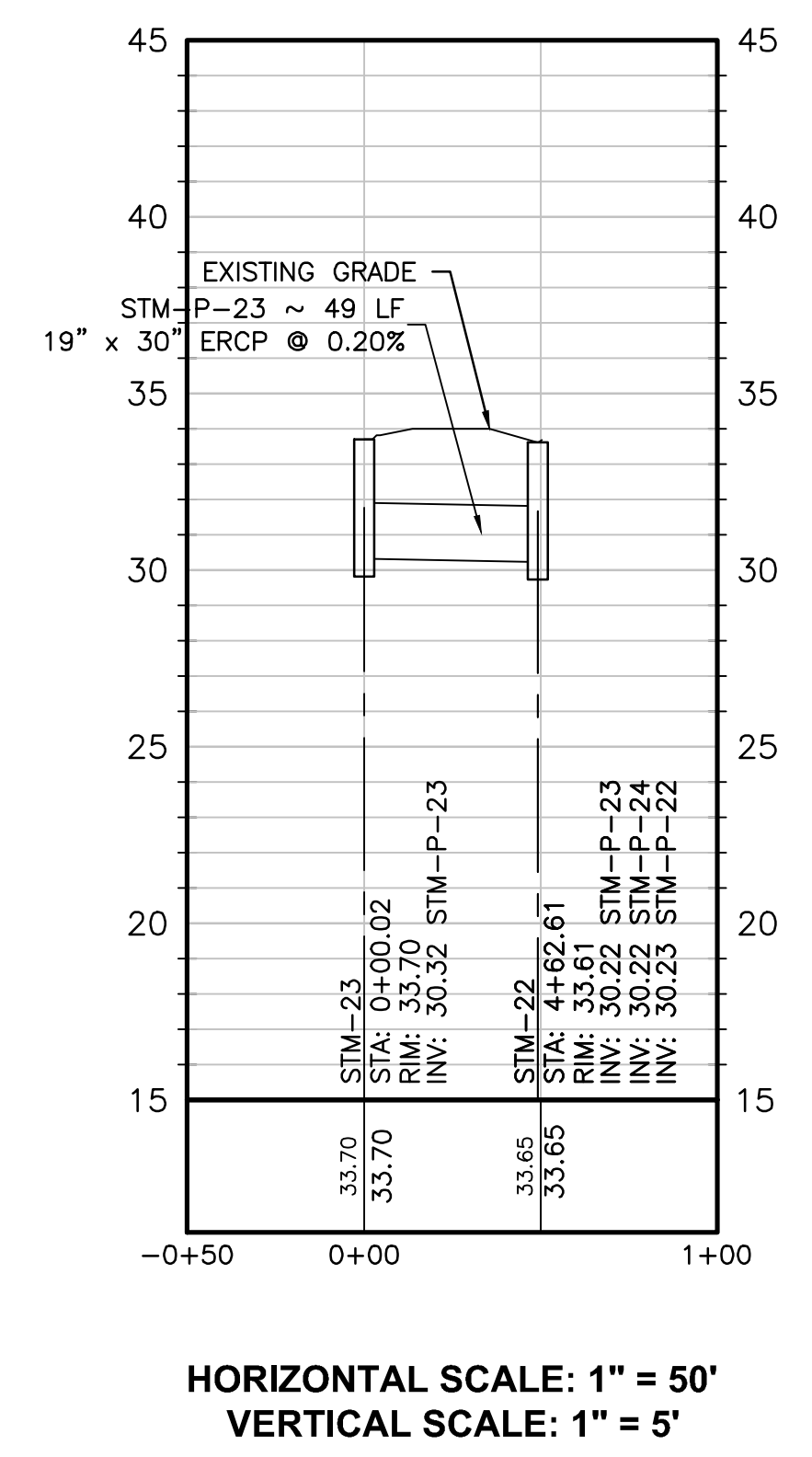




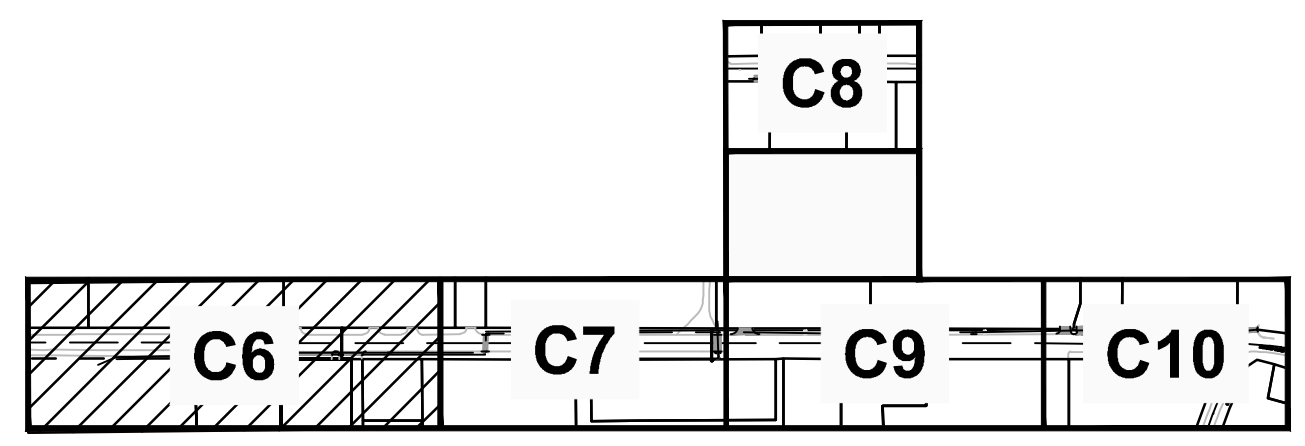
LEGEND	
— SF —	SILT-FENCE
	CONCRETE REPLACEMENT
	ASPHALT REPLACEMENT



HORIZONTAL SCALE: 1" = 50'  
VERTICAL SCALE: 1" = 5'



HORIZONTAL SCALE: 1" = 50'  
VERTICAL SCALE: 1" = 5'



**AVCON, INC.**  
ENGINEERS & PLANNERS  
320 BAYSHORE DRIVE, SUITE A  
NICEVILLE, FL 32576-2425  
OFFICE: (850) 678-0050  
FAX: (850) 678-0040  
CORPORATE CERTIFICATE OF AUTHORIZATION NUMBER: 5057  
WWW.AVCONINC.COM

**AVCON**

TRANSFORMING TODAY'S IDEAS  
INTO TOMORROW'S REALITY

TONIA D. NATION  
FL LICENSE NO.: 64631  
FBPR CERTIFICATE OF AUTHORIZATION NO. 5057

NO.	DATE	REVISION	BY

**DRAINAGE PLAN - PHASE I (SHEET 1 OF 2)**

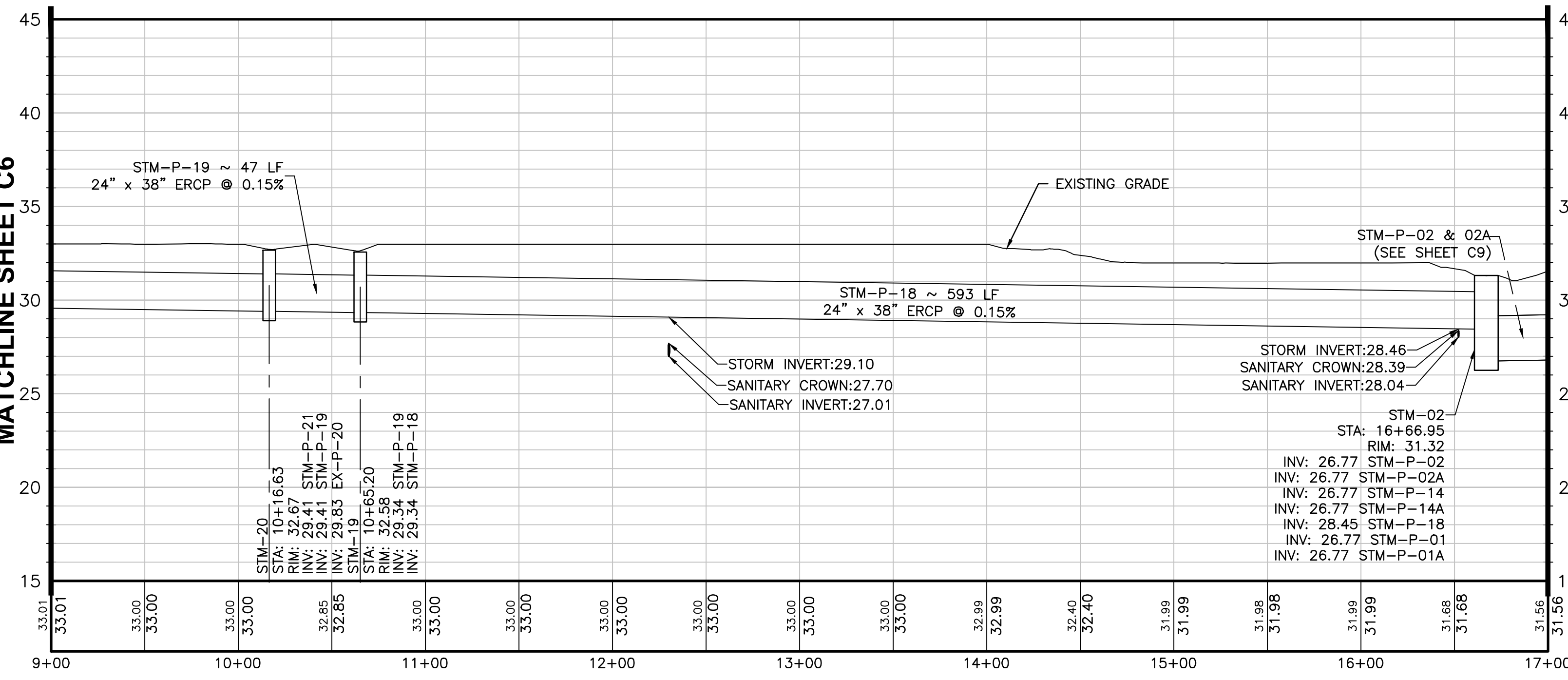
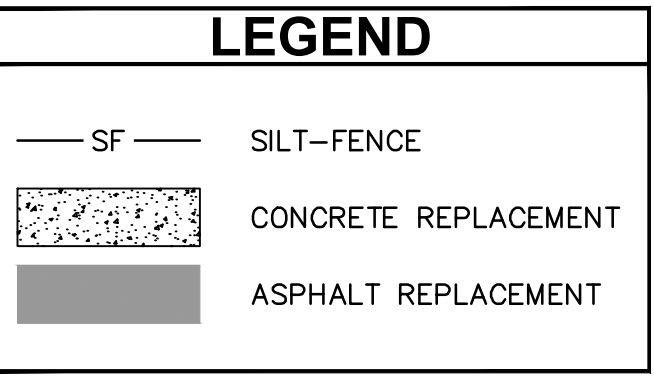
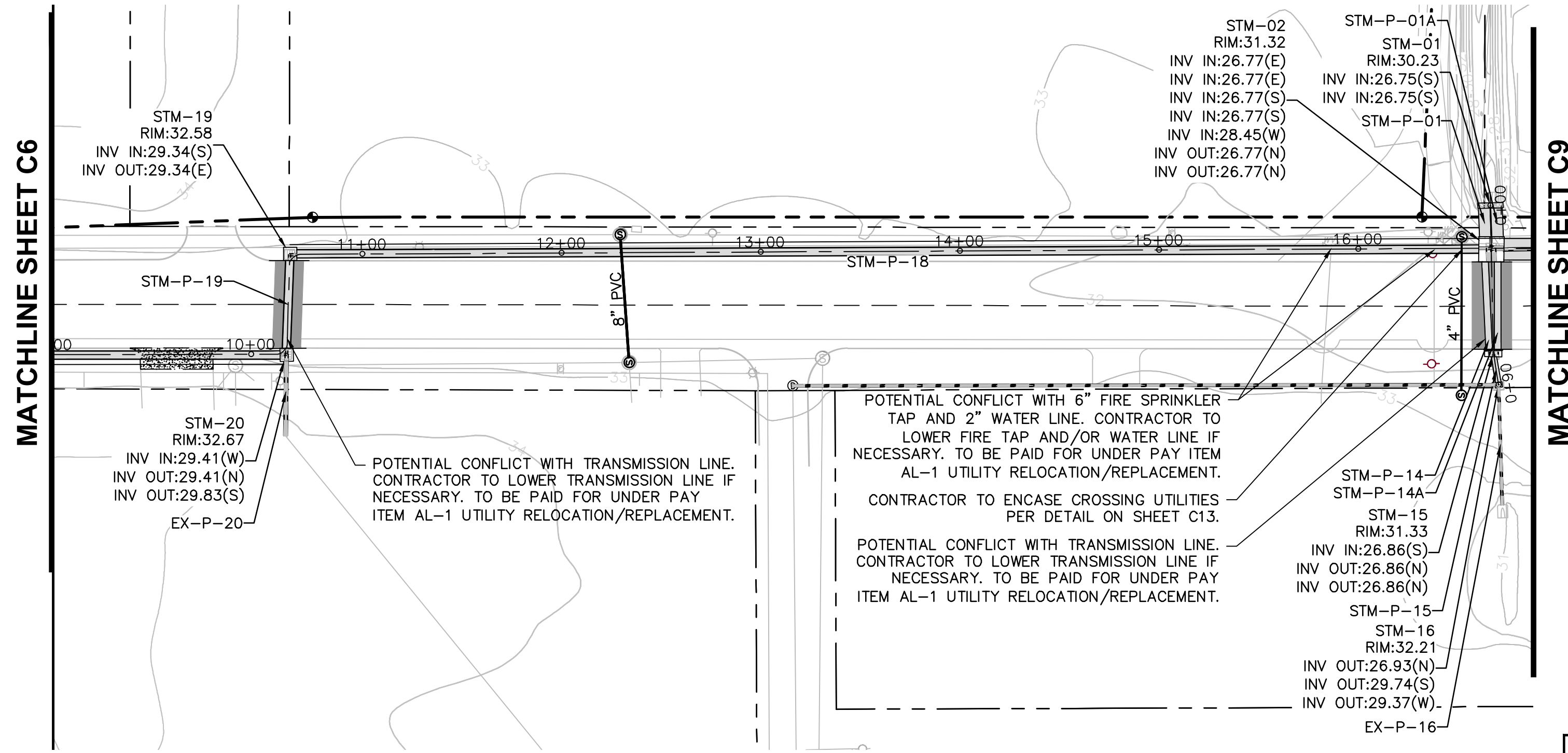
RELEASE FOR BID

**ANCHORS STREET NORTHWEST STORMWATER IMPROVEMENTS**

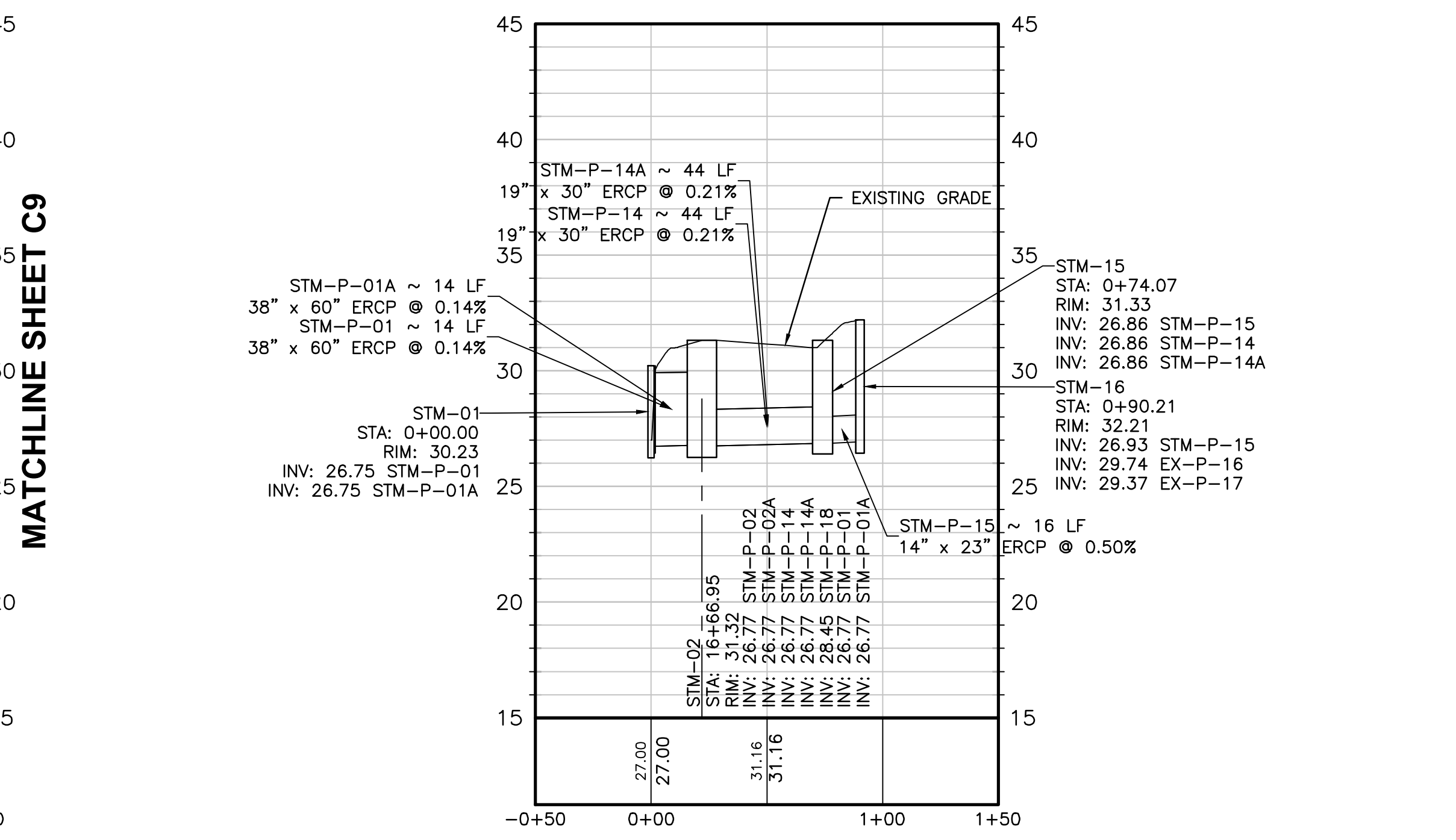
PREPARED FOR:  
CITY OF FORT WALTON BEACH, FLORIDA

DESIGNED BY: TDN/CAP  
DRAWN BY: CAP  
CHECKED BY: VCL  
APPROVED BY: VCL  
PROJECT NO: 2017.238.01  
DATE: JANUARY 2019

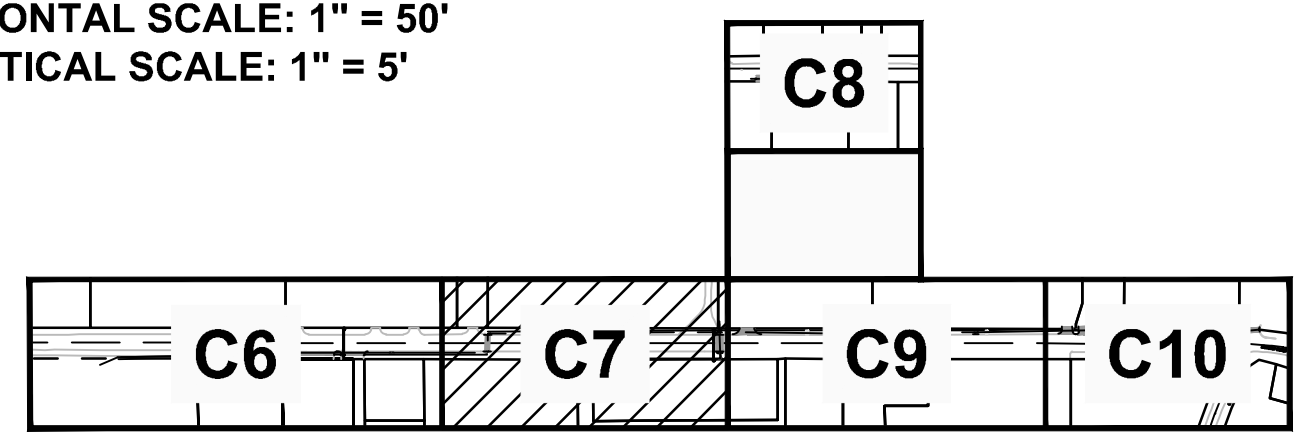
**SHEET NUMBER**  
**C6**



HORIZONTAL SCALE: 1" = 50'  
VERTICAL SCALE: 1" = 5'



HORIZONTAL SCALE: 1" = 50'  
VERTICAL SCALE: 1" = 5'



N:\NICEVILLE-PROJECTS\238-CITY OF FWB\2017.238-01-ANCHORS STORMWATER REPAIR\000 CAD\17.238-01-STM.DWG 12/10/2018 4:58 PM

**AVCON, INC.**  
ENGINEERS & PLANNERS  
320 BAYSHORE DRIVE, SUITE A  
NICEVILLE, FL 32576-2425  
OFFICE: (850) 678-0050  
FAX: (850) 678-0040  
CORPORATE CERTIFICATE OF  
AUTHORIZATION NUMBER: 5057  
www.avconinc.com

**AVCON**

TRANSFORMING TODAY'S IDEAS  
INTO TOMORROW'S REALITY

NO.	DATE	REVISION	BY

**DRAINAGE  
PLAN - PHASE I  
(SHEET 2 OF 2)**

RELEASE FOR BID

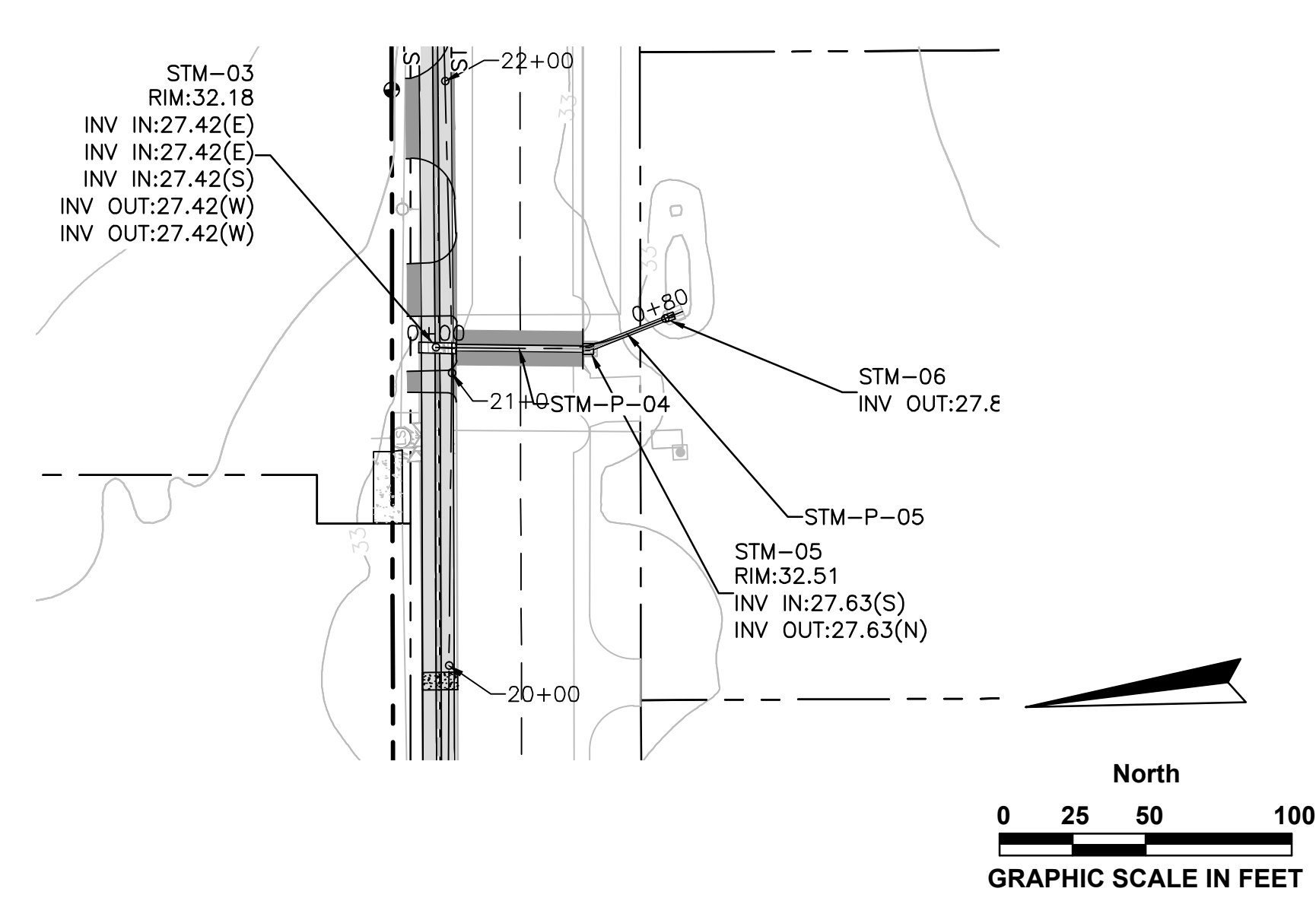
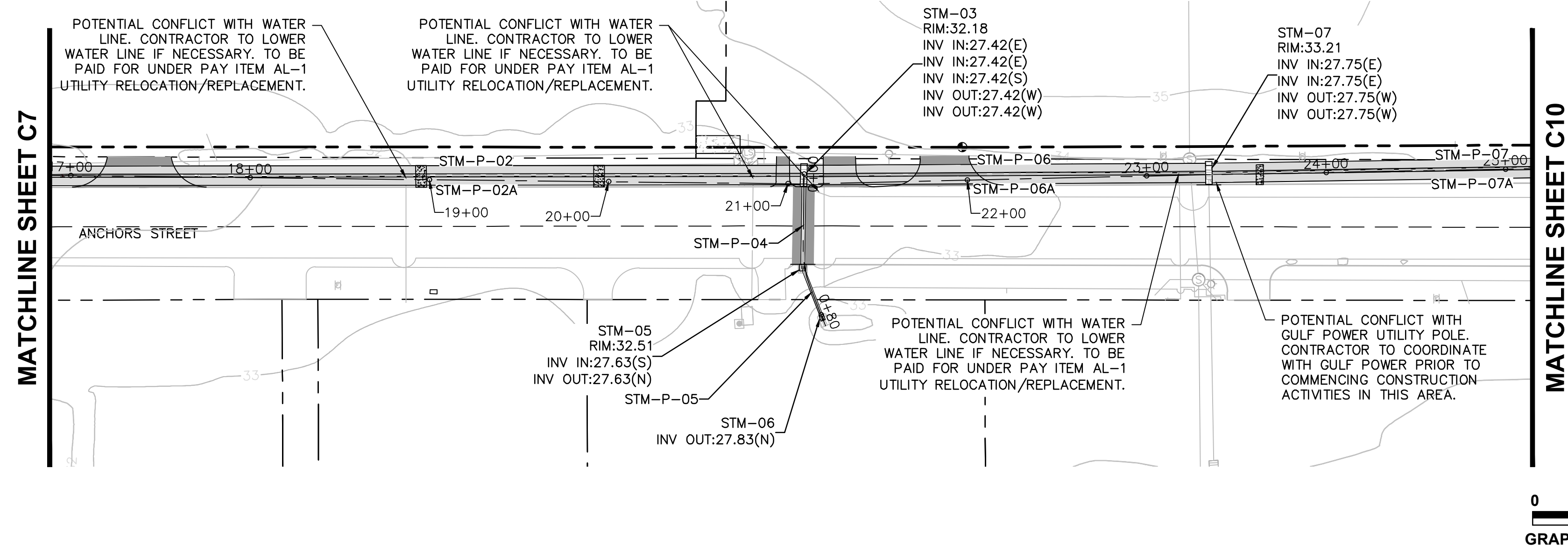
ANCHORS STREET  
NORTHWEST  
STORMWATER  
IMPROVEMENTS

PREPARED FOR  
CITY OF FORT WALTON BEACH, FLORIDA

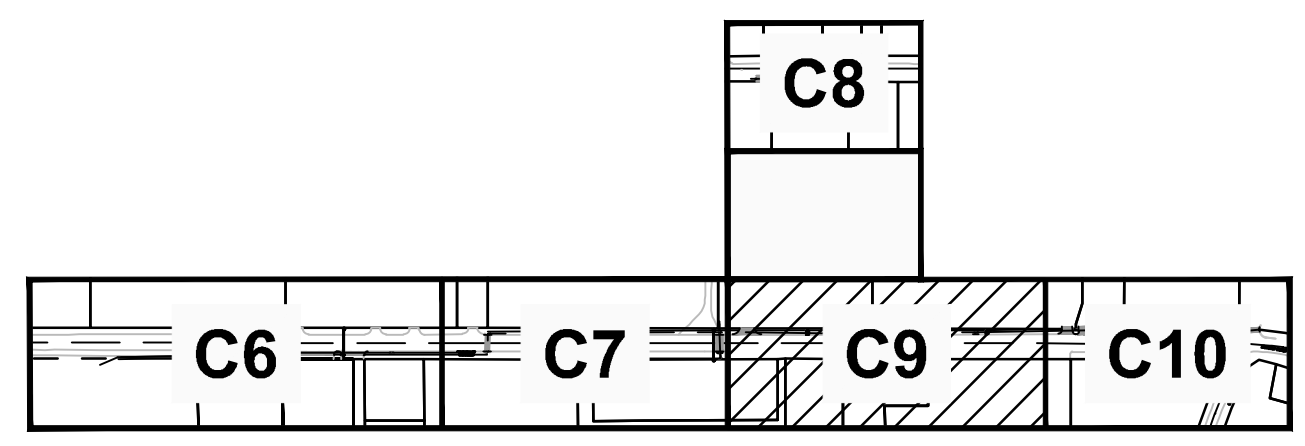
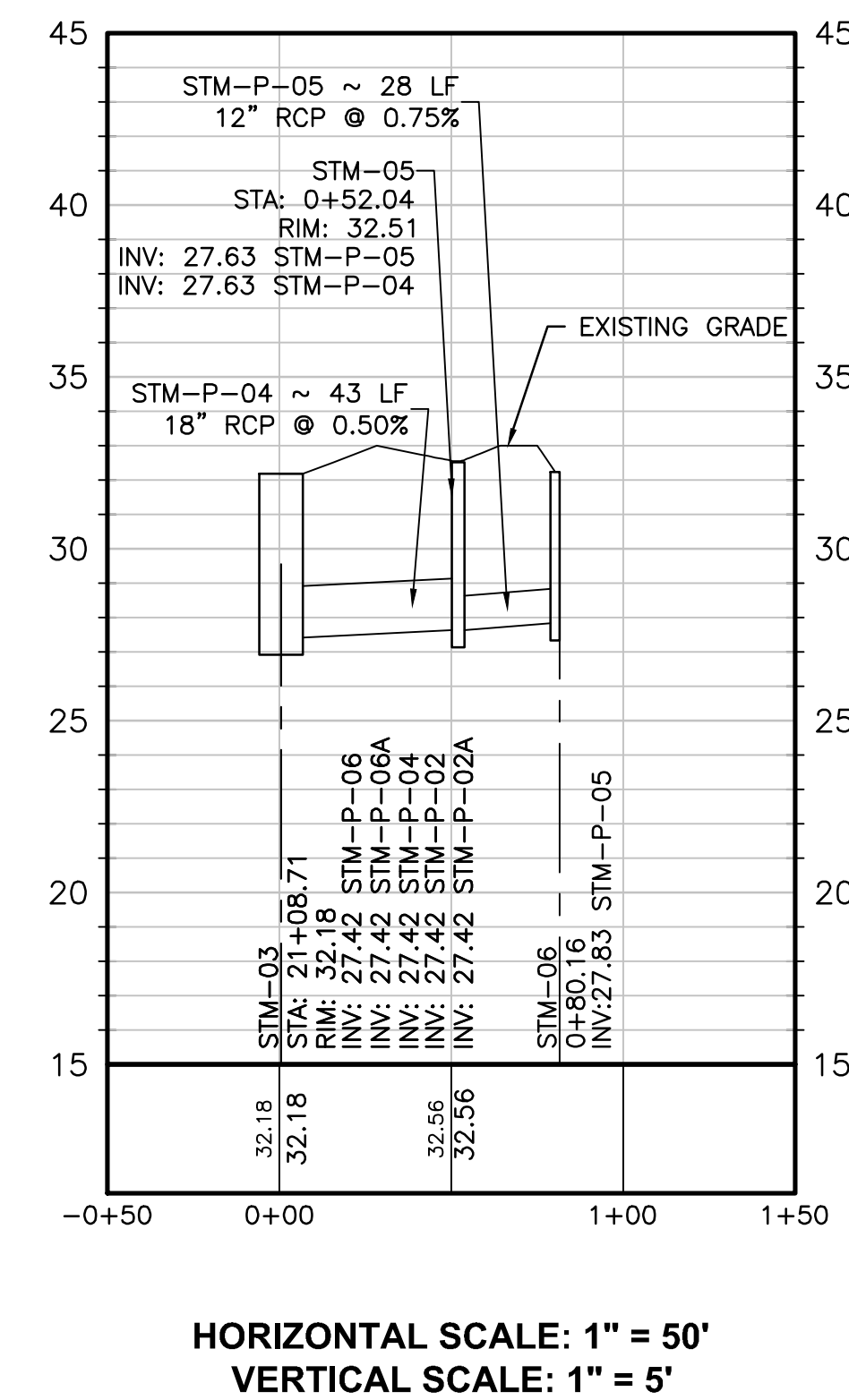
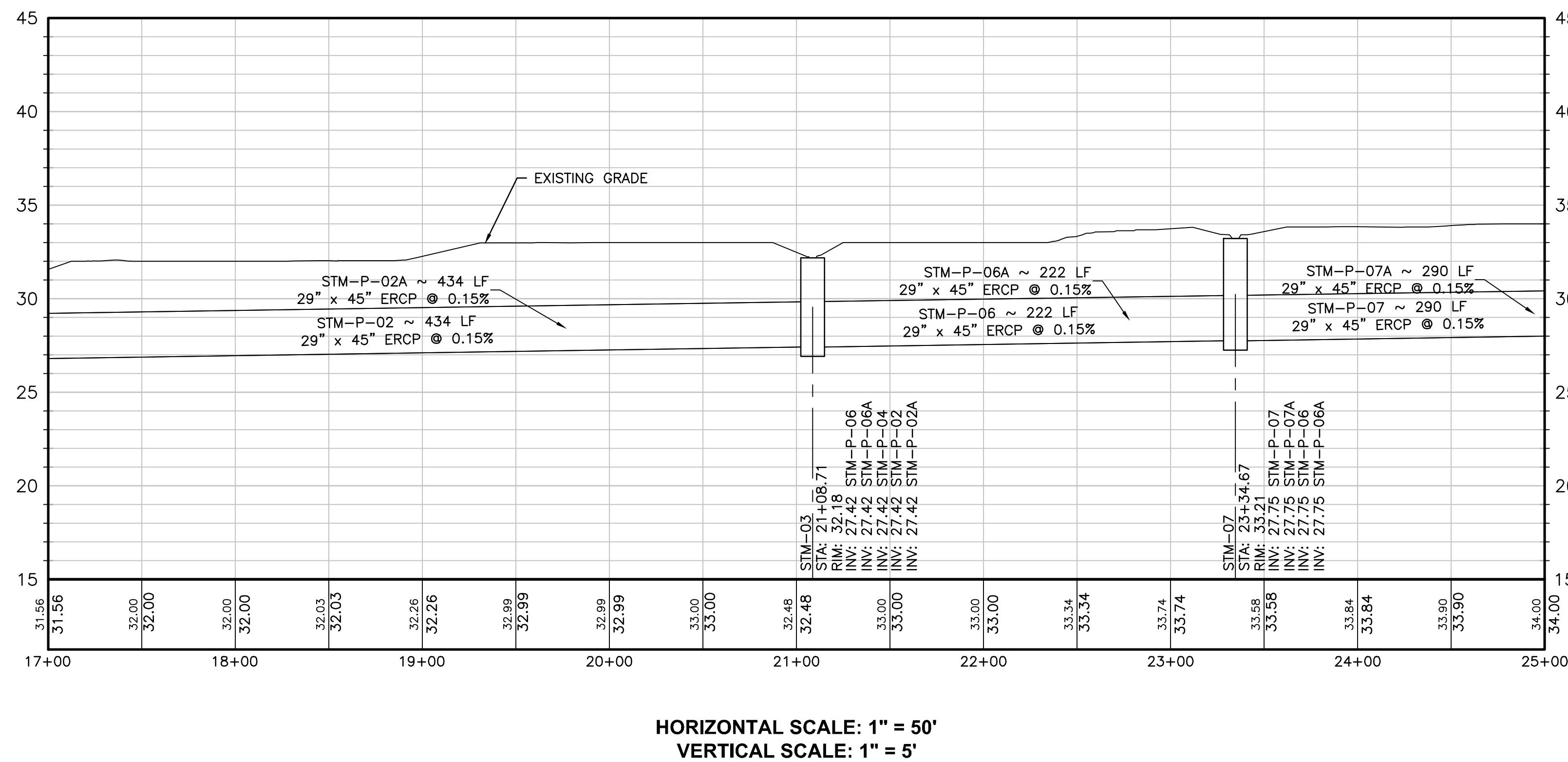
DESIGNED BY: TDN/CAP  
DRAWN BY: CAP  
CHECKED BY: VCL  
APPROVED BY: VCL  
PROJECT NO: 2017.238.01  
DATE: JANUARY 2019

SHEET NUMBER  
**C7**





LEGEND	
— SF —	SILT-FENCE
	CONCRETE REPLACEMENT
	ASPHALT REPLACEMENT



**AVCON, INC.**  
ENGINEERS & PLANNERS  
320 BAYSHORE DRIVE, SUITE A  
NICEVILLE, FL 32578-2425  
OFFICE: (850) 678-0050  
FAX: (850) 678-0040  
CORPORATE CERTIFICATE OF AUTHORIZATION NUMBER: 5057  
WWW.AVCONINC.COM

**AVCON**

TRANSFORMING TODAY'S IDEAS INTO TOMORROW'S REALITY

TONIA D. NATION  
FL LICENSE NO.: 64631  
FBPR CERTIFICATE OF AUTHORIZATION NO. 5057

NO.	DATE	BY	REVISION

**ANCHORS STREET NORTHWEST STORMWATER IMPROVEMENTS**

PREPARED FOR  
CITY OF FORT WALTON BEACH, FLORIDA

**DRAINAGE PLAN - PHASE III (SHEET 1 OF 2)**

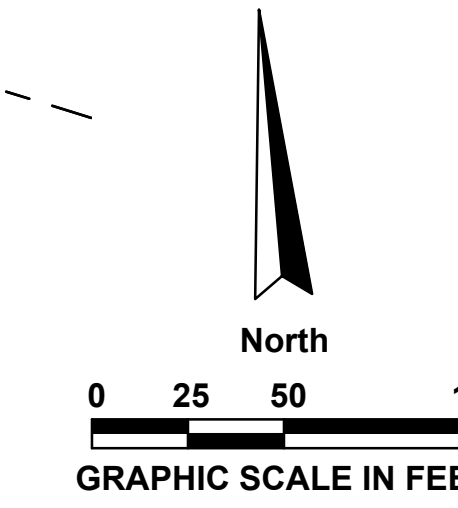
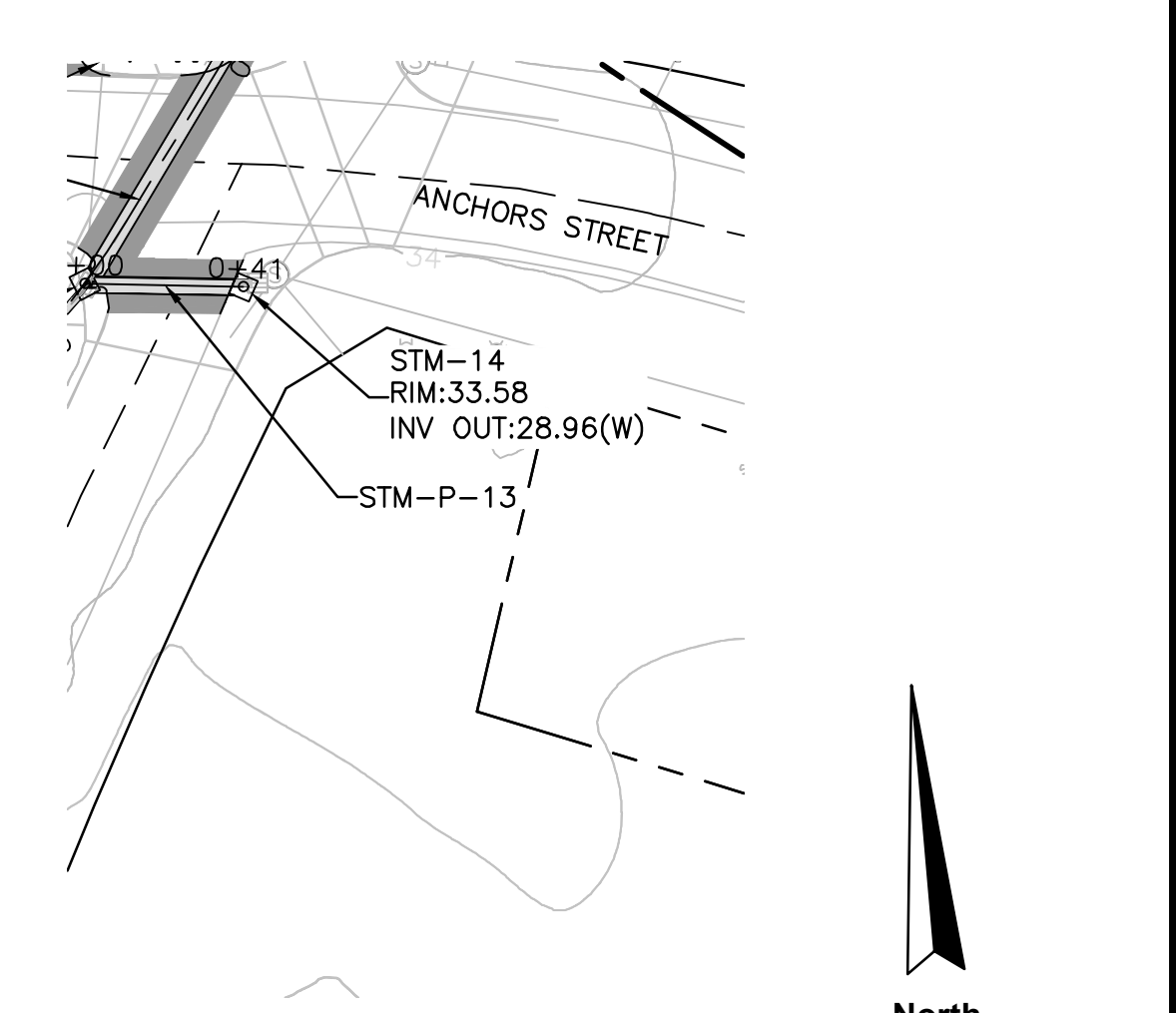
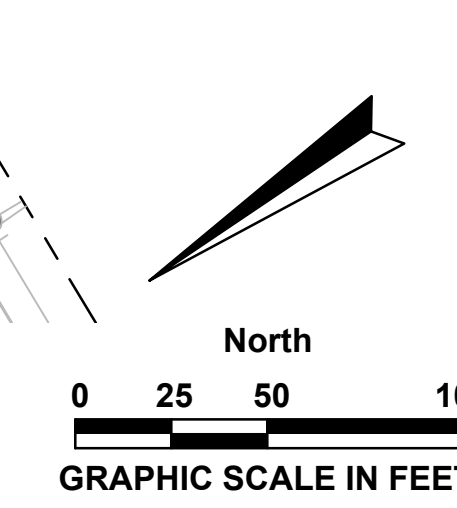
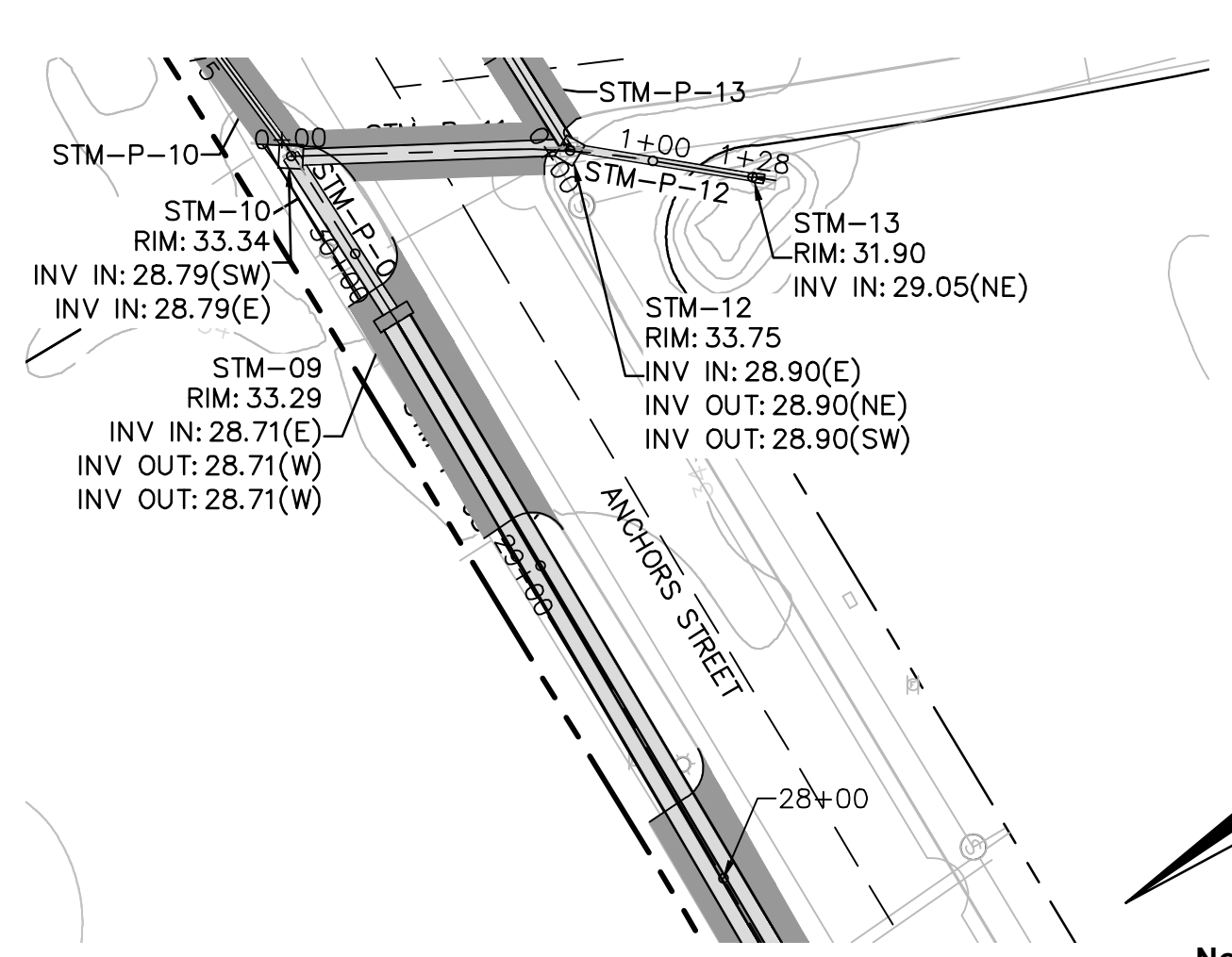
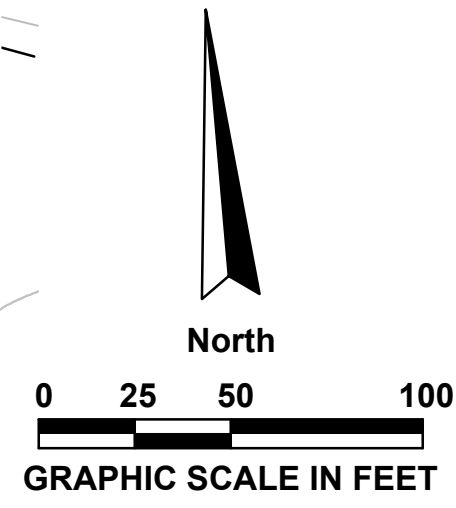
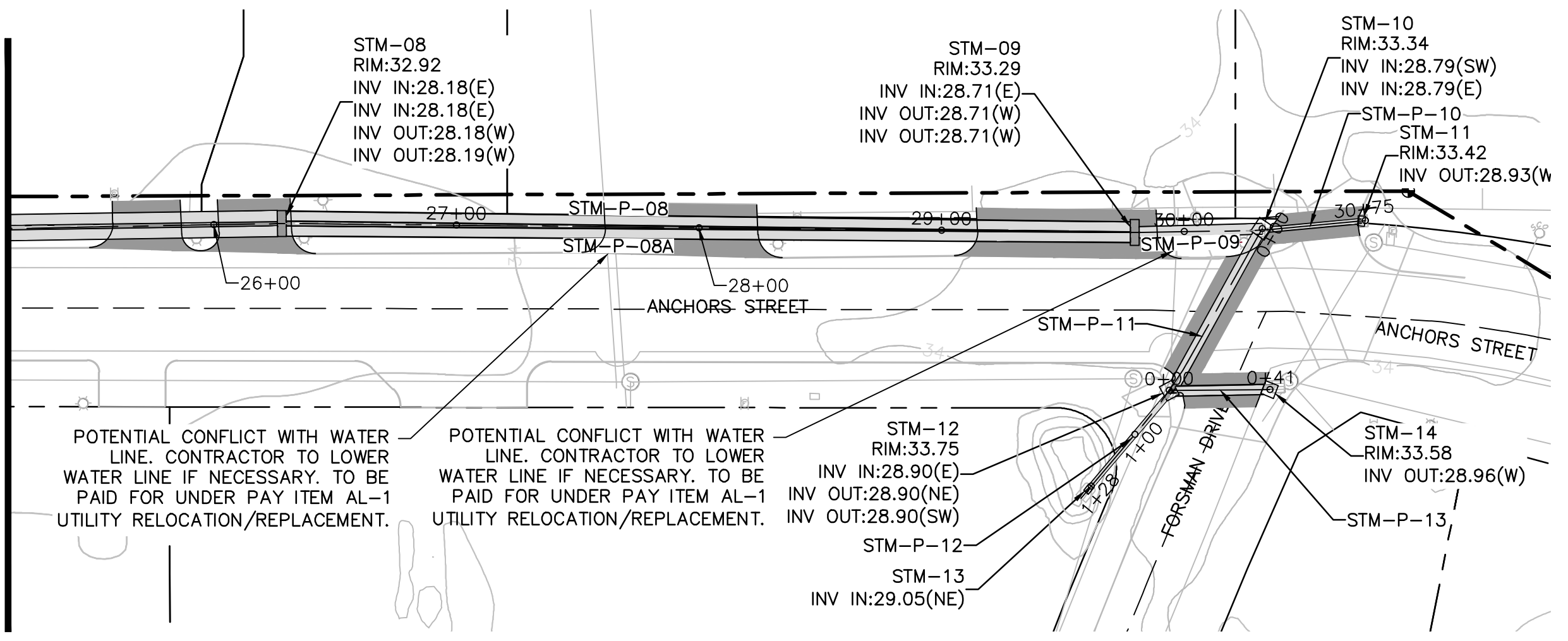
RELEASE FOR BID

DESIGNED BY: TDN/CAP  
DRAWN BY: CAP  
CHECKED BY: VCL  
APPROVED BY: VCL  
PROJECT NO: 2017.238.01  
DATE: JANUARY 2019

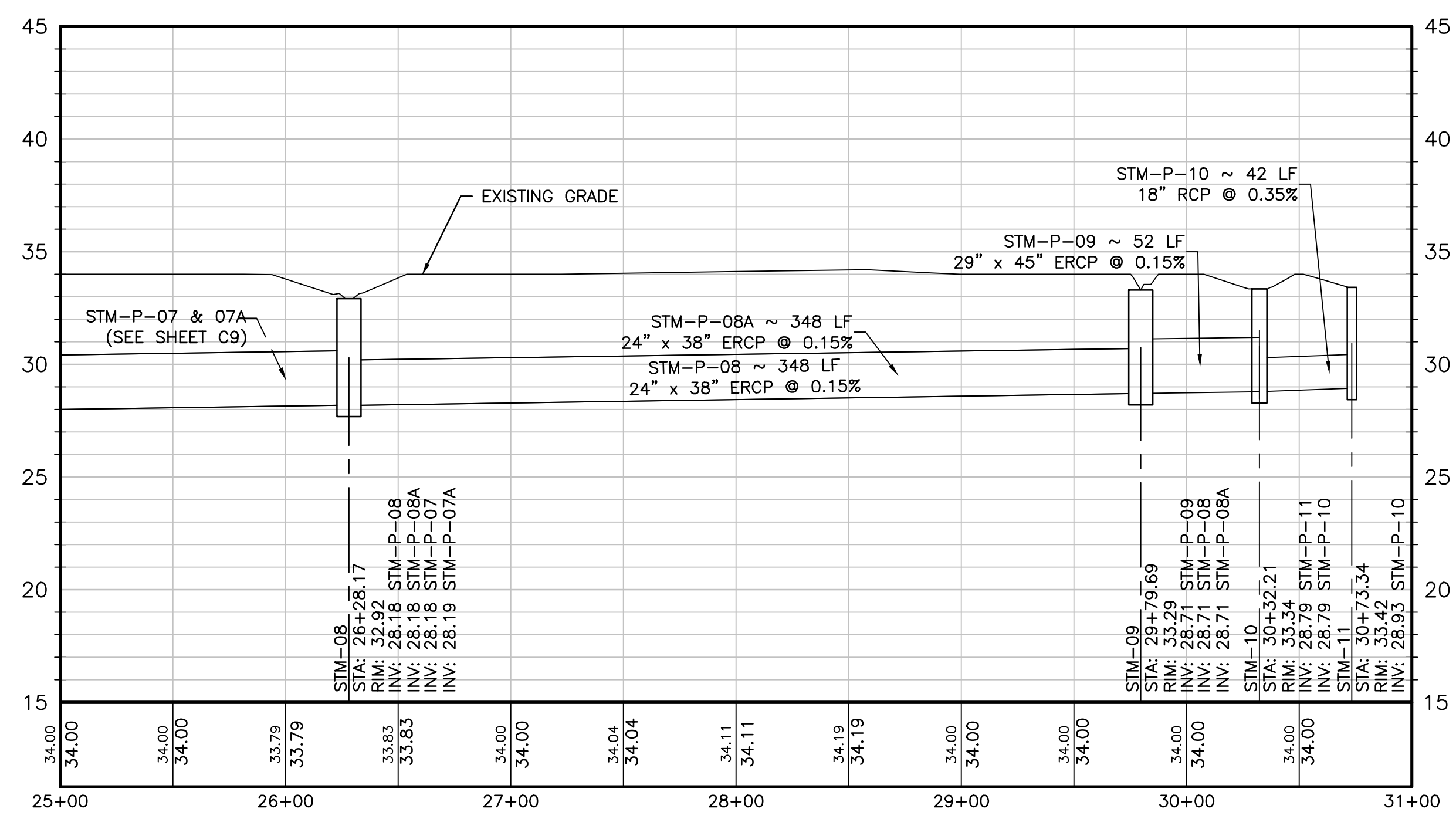
**SHEET NUMBER**  
**C9**

N:\NICEVILLE-PROJECTS\238-CITY OF FWB\2017.238-01-ANCHORS STORMWATER REPAIR\000 CAD\17.238.01-STM.DWG 12/10/2018 4:59 PM

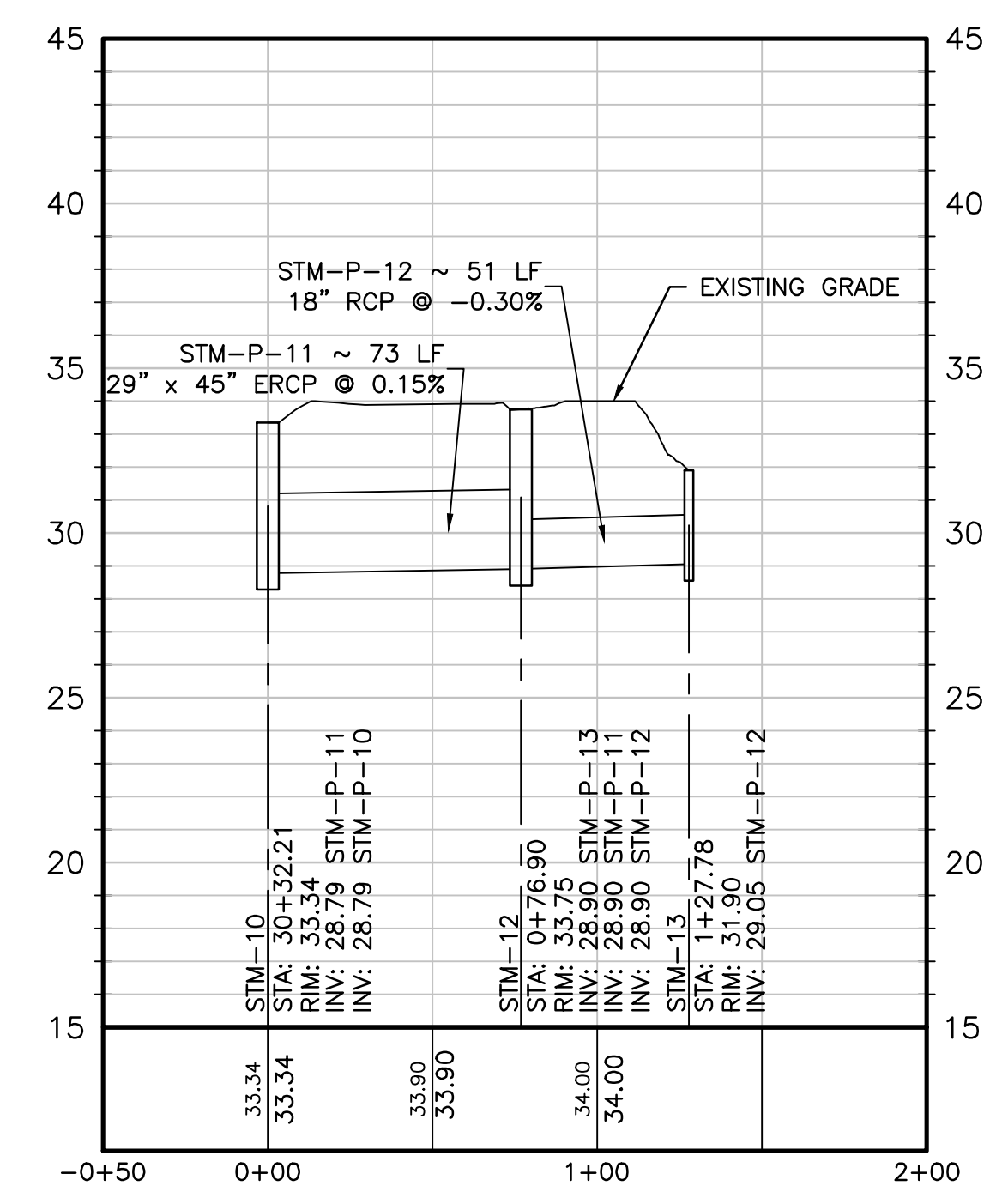
MATCHLINE SHEET C7



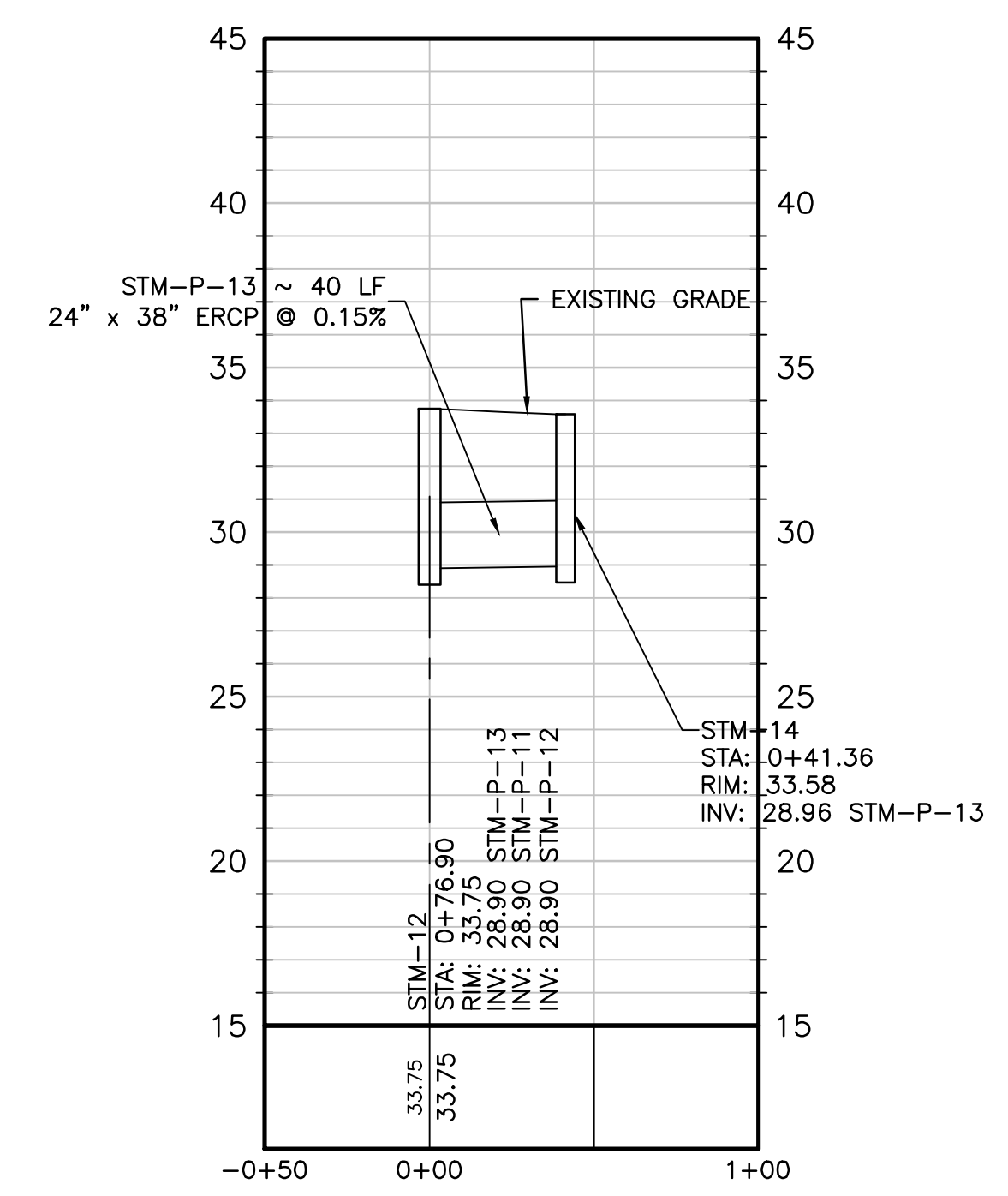
LEGEND	
	SILT-FENCE
	CONCRETE REPLACEMENT
	ASPHALT REPLACEMENT



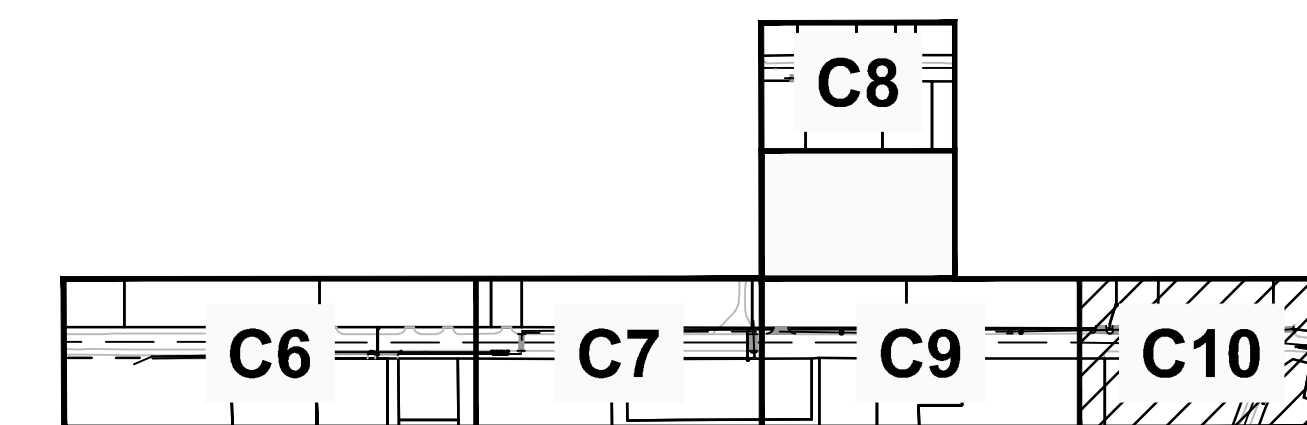
HORIZONTAL SCALE: 1" = 50'  
VERTICAL SCALE: 1" = 5'



HORIZONTAL SCALE: 1" = 50'  
VERTICAL SCALE: 1" = 5'



HORIZONTAL SCALE: 1" = 50'  
VERTICAL SCALE: 1" = 5'



**AVCON, INC.**  
ENGINEERS & PLANNERS  
320 BAYSHORE DRIVE, SUITE A  
NICEVILLE, FL 32576-2425  
OFFICE: (850) 678-0050  
FAX: (850) 678-0040  
CORPORATE CERTIFICATE OF AUTHORIZATION NUMBER: 5057  
WWW.AVCONINC.COM

**AVCON**

TRANSFORMING TODAY'S IDEAS INTO TOMORROW'S REALITY

NO.	DATE	BY	REVISION

**DRAINAGE PLAN - PHASE III (SHEET 2 OF 2)**

RELEASE FOR BID

ANCHORS STREET NORTHWEST STORMWATER IMPROVEMENTS

PREPARED FOR: CITY OF FORT WALTON BEACH, FLORIDA

DESIGNED BY: TDN/CAP  
DRAWN BY: CAP  
CHECKED BY: VCL  
APPROVED BY: VCL  
PROJECT NO: 2017.238.01  
DATE: JANUARY 2019

SHEET NUMBER **C10**





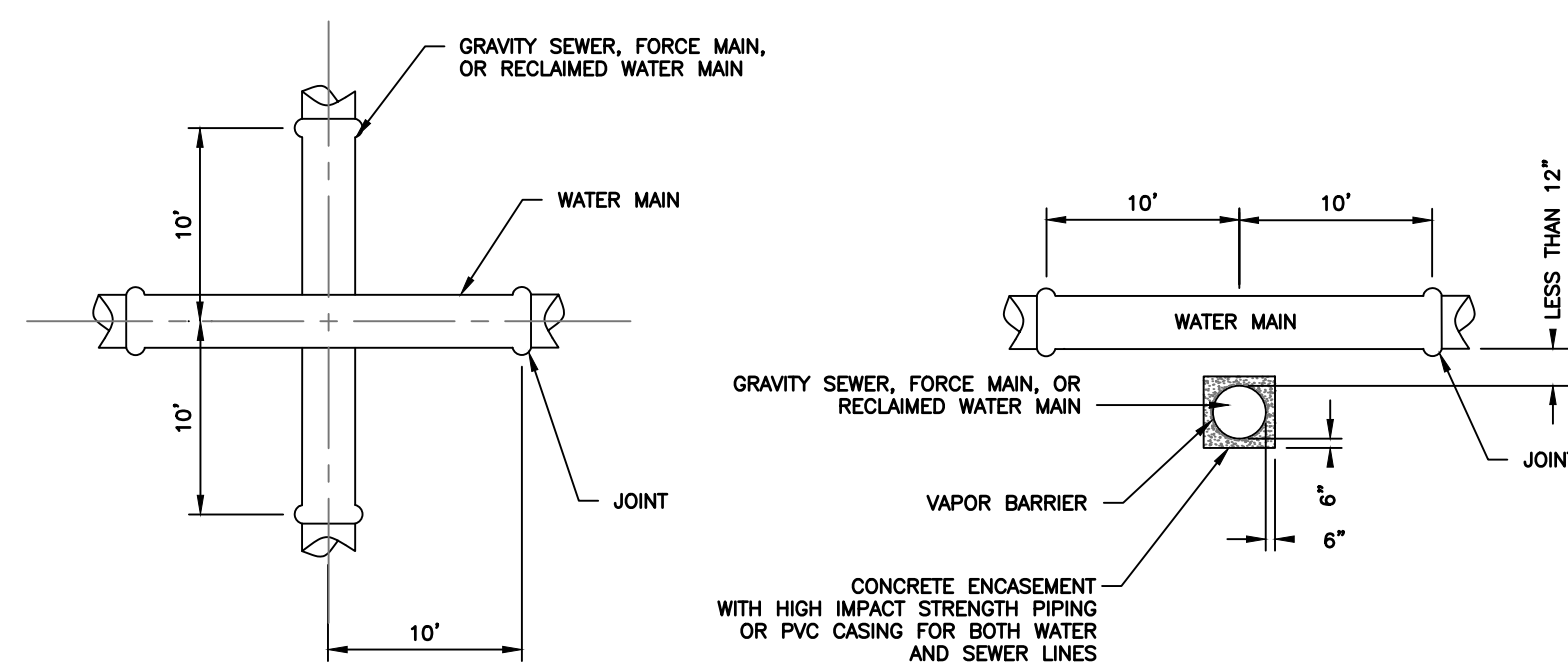
**GENERAL UTILITY NOTES:**

- THE CONTRACTOR SHALL NOTIFY THE RESPECTIVE LOCAL UTILITY SERVICES FOR SITE UTILITY STAKE-OUT PRIOR TO BEGINNING WORK. PROJECT CONTACTS ARE AS FOLLOWS:
 

WATER/SEWER – CITY OF FORT WALTON BEACH OKALOOSA COUNTY	(850)	833-9613	(850)	651-7176
GAS – OKALOOSA COUNTY GAS DISTRICT	(850)	729-4880		
TV – COX COMMUNICATIONS	(850)	862-4144		
TELEPHONE – CENTURY LINK A T & T	(855)	742-6062	(800)	778-9140
FIBER – CENTURY LINK A T & T	(855)	742-6062	(903)	753-3145
COX COMMUNICATIONS	(352)	337-2052		
SOUTHERN LIGHT	(251)	259-0807		
ELECTRIC – GULF POWER	(800)	778-9140		
OKALOOSA COUNTY TRAFFIC	(850)	651-7295		
- CALL SUNSHINE STATE ONE CALL 48 HOURS BEFORE YOU DIG: 1-800-432-4770
- LOCATIONS OF UTILITIES SHOWN ON THIS PLAN ARE AN APPROXIMATION ONLY. THE CONTRACTOR SHALL BE RESPONSIBLE FOR THE FIELD VERIFICATION OF THE LOCATION, TYPE, DEPTH, ETC. OF ALL UTILITIES. THE CONTRACTOR SHALL MAINTAIN A LOG OF ALL UTILITIES LOCATED IN THE FIELD AND SHALL INDICATE THEM ON THE RECORD (AS-BUILT) DRAWINGS.
- ALL METHODS AND MATERIALS OF RELOCATION, INSTALLATION, AND PROTECTION SHALL BE IN ACCORDANCE WITH INDIVIDUAL UTILITY STANDARDS. WHERE PROPOSED UTILITY INSTALLATIONS OR MODIFICATIONS CROSS EXISTING PAVEMENTS TO REMAIN, CONTRACTOR SHALL MAINTAIN EXISTING PAVEMENT OR RESTORE PAVEMENT TO MATCH EXISTING CONDITION. NO SEPARATE PAYMENT SHALL BE MADE FOR PAVEMENT RESTORATION.
- ALL UTILITIES SHALL REMAIN IN PLACE AND IN SERVICE UNLESS SHOWN OTHERWISE.

**WATER AND SEWER NOTES:**

- A MANDATORY PRECONSTRUCTION MEETING SHALL BE HELD WITH ALL INVOLVED PARTIES, INCLUDING THE CITY, FDEP PROJECT MANAGER, ENGINEER-OF-RECORD, CONTRACTOR(S) AND UTILITY PROVIDER STAFF A MINIMUM TWO (2) WEEKS PRIOR TO CONSTRUCTION TO ADDRESS ALL CONSTRUCTION & INSPECTION REQUIREMENTS. THIS MEETING SHALL BE COORDINATED BY THE ENGINEER-OF-RECORD BY LETTER NOTIFICATION AND HELD AT THE CITY ENGINEERING DEPARTMENT. FAILURE TO HOLD A PRECONSTRUCTION MEETING COULD RESULT IN EXPENSIVE REWORK OF ITEMS NOT ACCEPTABLE BY UTILITY PROVIDER STANDARDS.
- THE CONTRACTOR SHALL PROVIDE PROPER SEPARATION FROM PROPOSED DRAINAGE SYSTEMS AND UTILITY PIPES, INCLUDING SERVICES.
- NO UTILITY CONNECTIONS WILL BE MADE INTO CITY / FDOT RIGHT-OF-WAY, AND/OR EASEMENTS WITHOUT AN APPROVED UTILITY PERMIT. ALL EXISTING ROAD CROSSINGS WILL BE BORED, UNLESS PERMITTED OTHERWISE. THE CONTRACTOR MUST REPAIR ANY PAVEMENT CUTS WITHIN TIME SPECIFIED ON PERMIT AND COORDINATE ALL CUTS WITH GOVERNING AUTHORITY A MINIMUM 10 DAYS PRIOR TO WORK BEING DONE.
- THE CONTRACTOR WILL INSTALL TRACER WIRE ABOVE ALL PIPES BEING INSTALLED. THE WIRE WILL BE EXTENDED A MINIMUM 12" ABOVE FINAL GROUND ELEVATION AT THE VALVES AND ALL EXCESS WIRE COILED AND PLACED INSIDE THE VALVE BOX LID. THE WIRE WILL RUN THE ENTIRE SYSTEM, INCLUDING SERVICES TO CREATE A CONTINUOUS ELECTRIC CIRCUIT CAPABLE OF BEING FULLY TRACED WHEN CONNECTED TO A SINGLE DC SOURCE.
- A MINIMUM 36" COVER IS REQUIRED FROM TOP OF ALL PROPOSED UTILITY LINES AND SERVICES FROM FINISHED GRADES, INCLUDING SWALES AND BASINS. ALL FIRE AND FLUSH HYDRANTS WILL BE PLACED AT BACK OF THE PROPOSED UTILITY EASEMENT, WITH BOTTOM FLANGE SECTION LEVEL WITH FINISH PAVEMENT SURFACE AND HAVE AN ISOLATION VALVE FOR EACH HYDRANT, AS NOTED ON PLANS.

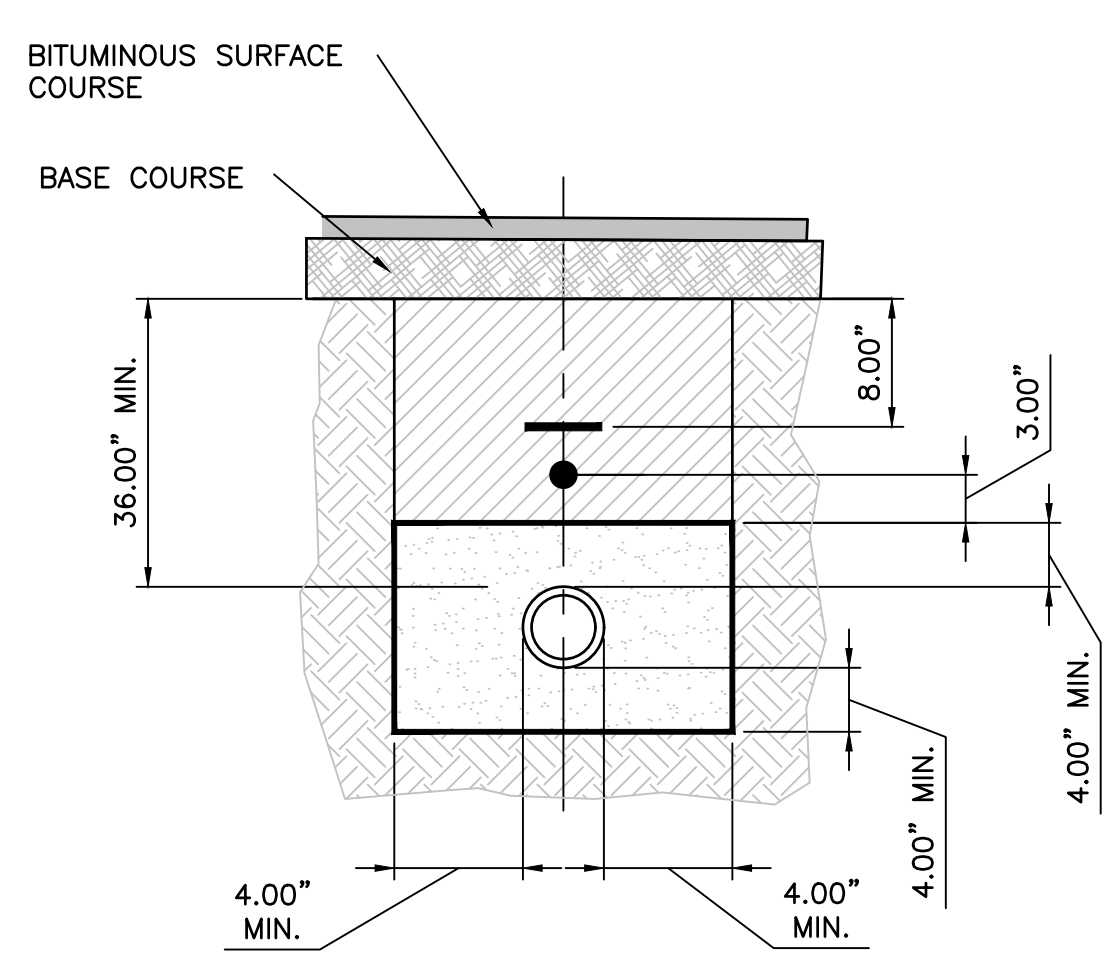


- VERTICAL SEPARATION NOTES:**
- VERTICAL SEPARATION BETWEEN UNDERGROUND WATER MAINS AND SANITARY OR STORM SEWERS, WASTEWATER OR STORMWATER FORCE MAINS, AND RECLAIMED WATER PIPELINES:
    - NEW OR RELOCATED, UNDERGROUND WATER MAINS CROSSING ANY EXISTING OR PROPOSED GRAVITY- OR VACUUM-TYPE SANITARY SEWER OR STORM SEWER SHALL BE LAID SO THE OUTSIDE OF THE WATER MAIN IS AT LEAST SIX INCHES, AND PREFERABLY 12 INCHES, ABOVE OR AT LEAST 12 INCHES BELOW THE OUTSIDE OF THE OTHER PIPELINE. HOWEVER, IT IS PREFERABLE TO LAY THE WATER MAIN ABOVE THE OTHER PIPELINE.
    - NEW OR RELOCATED, UNDERGROUND WATER MAINS CROSSING ANY EXISTING OR PROPOSED PRESSURE-TYPE SANITARY SEWER, WASTEWATER OR STORMWATER FORCE MAIN, OR PIPELINE CONVEYING RECLAIMED WATER SHALL BE LAID SO THE OUTSIDE OF THE WATER MAIN IS AT LEAST 12 INCHES ABOVE OR BELOW THE OUTSIDE OF THE OTHER PIPELINE. HOWEVER, IT IS PREFERABLE TO LAY THE WATER MAIN ABOVE THE OTHER PIPELINE.
    - AT THE UTILITY CROSSINGS DESCRIBED IN PARAGRAPHS (A) AND (B) ABOVE, ONE FULL LENGTH OF WATER MAIN PIPE SHALL BE CENTERED ABOVE OR BELOW THE OTHER PIPELINE SO THE WATER MAIN JOINTS WILL BE AS FAR AS POSSIBLE FROM THE OTHER PIPELINE. ALTERNATIVELY, AT SUCH CROSSINGS, THE PIPES SHALL BE ARRANGED SO THAT ALL WATER MAIN JOINTS ARE AT LEAST THREE FEET FROM ALL JOINTS IN VACUUM-TYPE SANITARY SEWERS, STORM SEWERS, STORMWATER FORCE MAINS, OR PIPELINES CONVEYING RECLAIMED WATER REGULATED UNDER PART III OF CHAPTER 62-610, F.A.C., AND AT LEAST SIX FEET FROM ALL JOINTS IN GRAVITY- OR PRESSURE-TYPE SANITARY SEWERS, WASTEWATER FORCE MAINS, OR PIPELINES CONVEYING RECLAIMED WATER NOT REGULATED UNDER PART III OF CHAPTER 62-610, F.A.C.

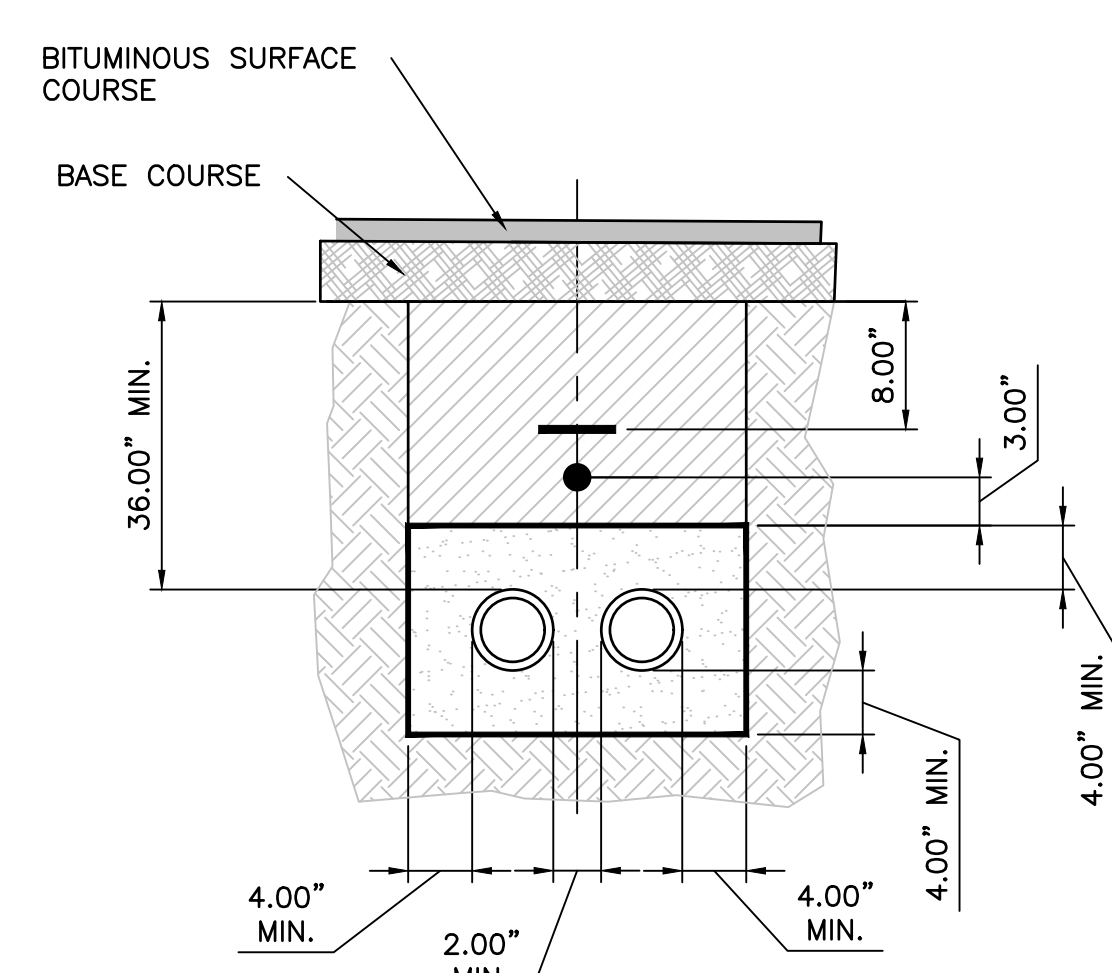
**SEPARATION EXCEPTION NOTES:**  
WHERE IT IS NOT TECHNICALLY FEASIBLE OR ECONOMICALLY SENSIBLE TO COMPLY WITH THE REQUIREMENTS IN SUBSECTION (1) OR (2) ABOVE, THE DEPARTMENT SHALL ALLOW EXCEPTIONS TO THESE REQUIREMENTS IF SUPPLIERS OF WATER OR CONSTRUCTION PERMIT APPLICANTS PROVIDE TECHNICAL OR ECONOMIC JUSTIFICATION FOR EACH EXCEPTION AND PROVIDE ALTERNATIVE CONSTRUCTION FEATURES THAT AFFORD A SIMILAR LEVEL OF RELIABILITY AND PUBLIC HEALTH PROTECTION. ACCEPTABLE ALTERNATIVE CONSTRUCTION FEATURES INCLUDE THE FOLLOWING:

- WHERE AN UNDERGROUND WATER MAIN IS BEING LAID LESS THAN THE REQUIRED MINIMUM HORIZONTAL DISTANCE FROM ANOTHER PIPELINE AND WHERE AN UNDERGROUND WATER MAIN IS CROSSING ANOTHER PIPELINE AND JOINTS IN THE WATER MAIN ARE BEING LOCATED LESS THAN THE REQUIRED MINIMUM DISTANCE FROM JOINTS IN THE OTHER PIPELINE:
  - USE OF PRESSURE-RATED PIPE CONFORMING TO THE AMERICAN WATER WORKS ASSOCIATION STANDARDS INCORPORATED INTO RULE 62-555.330, F.A.C., FOR THE OTHER PIPELINE IF IT IS A GRAVITY- OR VACUUM-TYPE PIPELINE;
  - USE OF WELDED, FUSED, OR OTHERWISE RESTRAINED JOINTS FOR EITHER THE WATER MAIN OR THE OTHER PIPELINE; OR
  - USE OF WATERTIGHT CASING PIPE OR CONCRETE ENCASEMENT AT LEAST FOUR INCHES THICK FOR EITHER THE WATER MAIN OR THE OTHER PIPELINE.
- WHERE AN UNDERGROUND WATER MAIN IS BEING LAID LESS THAN THREE FEET HORIZONTALLY FROM ANOTHER PIPELINE AND WHERE AN UNDERGROUND WATER MAIN IS CROSSING ANOTHER PIPELINE AND IS BEING LAID LESS THAN THE REQUIRED MINIMUM VERTICAL DISTANCE FROM THE OTHER PIPELINE:
  - USE OF PIPE, OR CASING PIPE, HAVING HIGH IMPACT STRENGTH (I.E., HAVING AN IMPACT STRENGTH AT LEAST EQUAL TO THAT OF 0.25-INCH-THICK DUCTILE IRON PIPE) OR CONCRETE ENCASEMENT AT LEAST FOUR INCHES THICK FOR THE WATER MAIN; AND
  - USE OF PIPE, OR CASING PIPE, HAVING HIGH IMPACT STRENGTH (I.E., HAVING AN IMPACT STRENGTH AT LEAST EQUAL TO THAT OF 0.25-INCH-THICK DUCTILE IRON PIPE) OR CONCRETE ENCASEMENT AT LEAST FOUR INCHES THICK FOR THE OTHER PIPELINE IF IT IS NEW AND IS CONVEYING WASTEWATER OR RECLAIMED WATER.

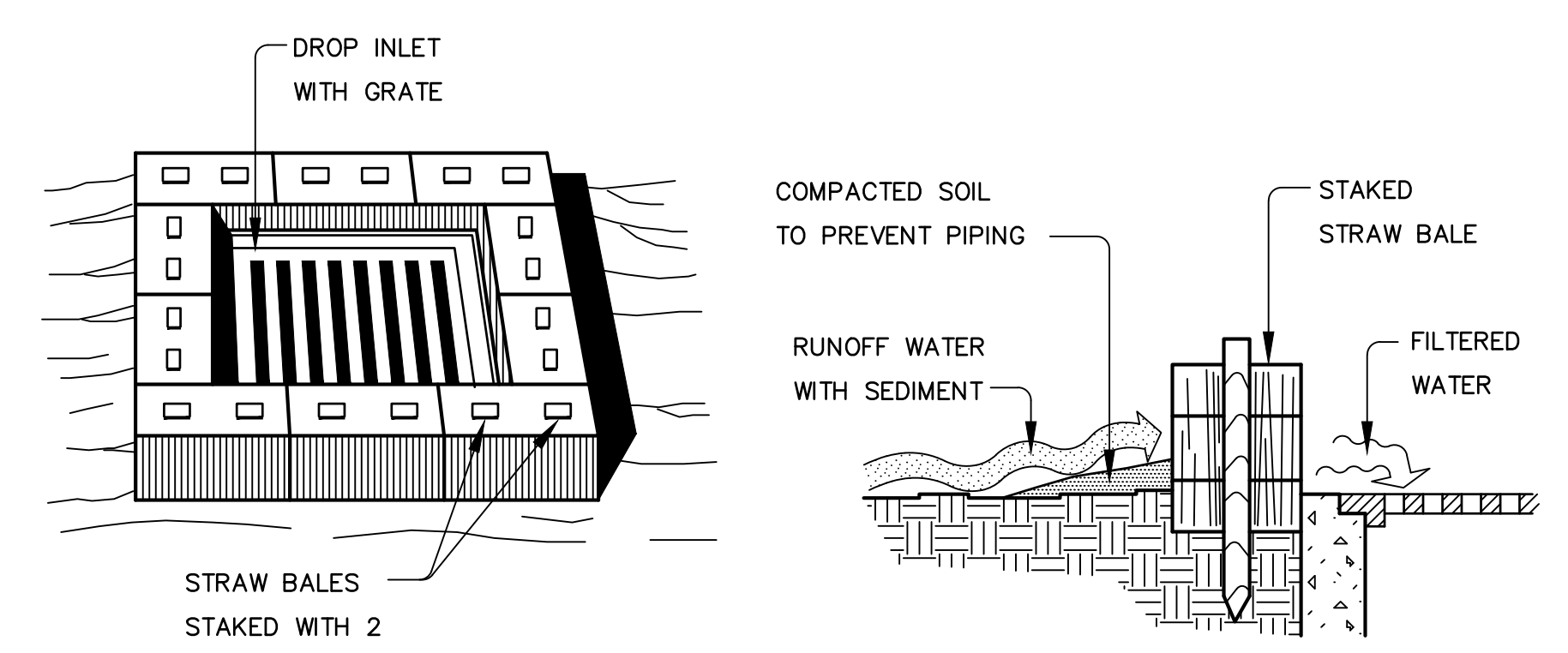
**CALL 2 WORKING DAYS BEFORE YOU DIG 811**  
IT'S THE LAW! DIAL 811 Know what's below. Call before you dig.  
SUNSHINE STATE ONE CALL OF FLORIDA, INC.



\* AS REQUIRED TO PROTECT EXISTING UTILITIES

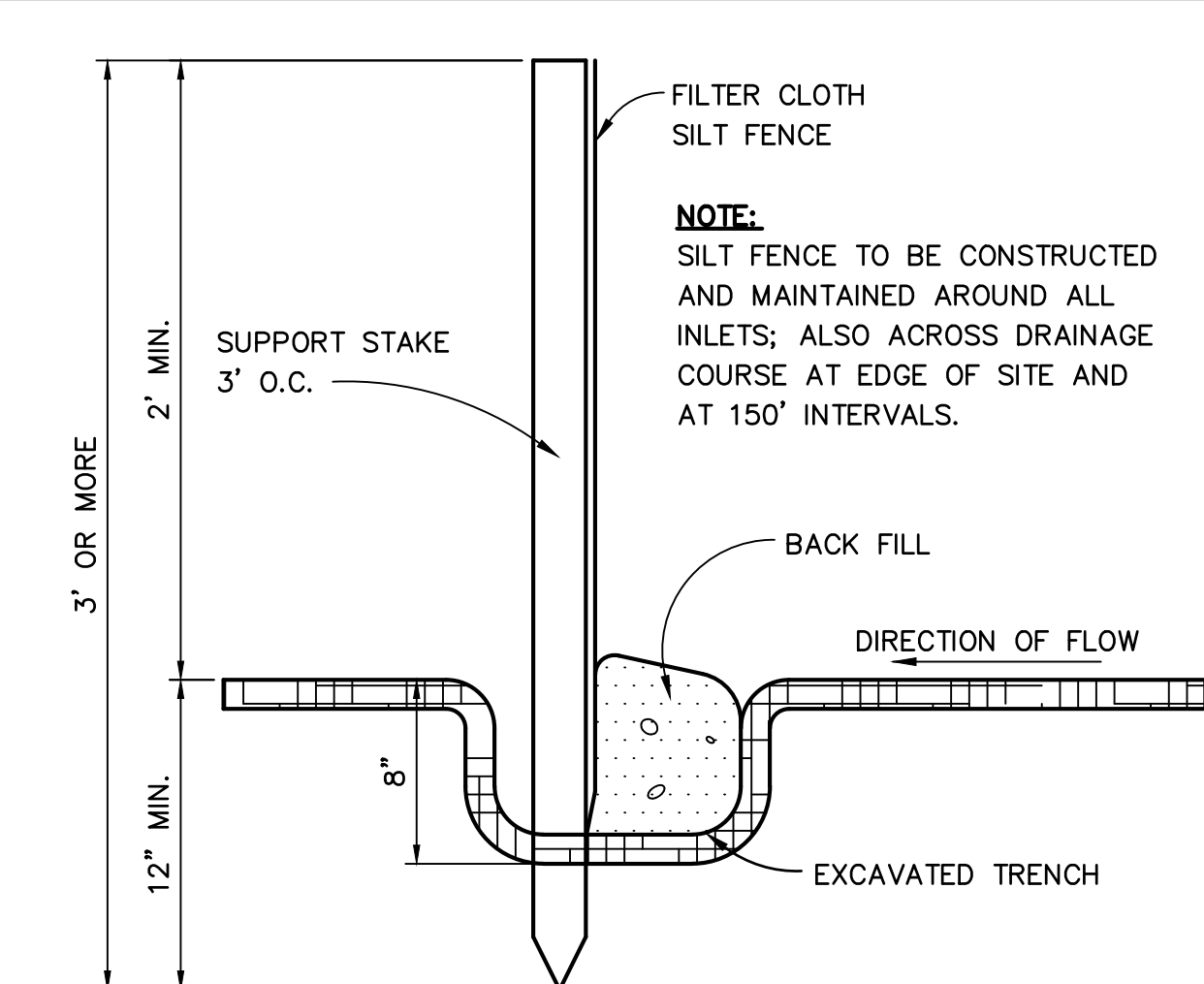


\* AS REQUIRED TO PROTECT EXISTING UTILITIES



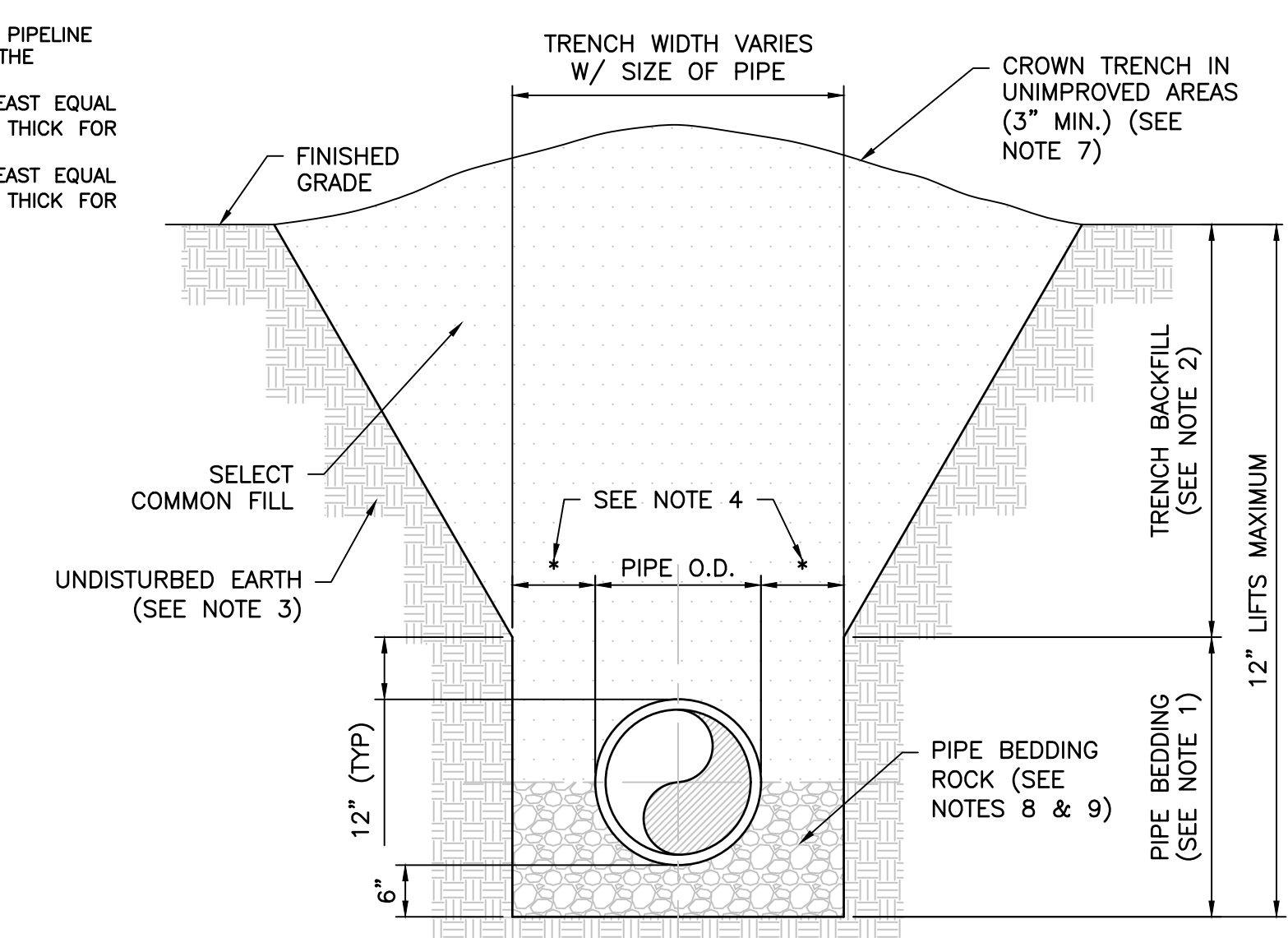
**STRAW BALE DROP INLET SEDIMENT FILTER**

**SPECIFIC APPLICATION**  
THIS METHOD OF INLET PROTECTION IS APPLICABLE WHERE THE INLET DRAINS A RELATIVELY FLAT AREA (SLOPES NO GREATER THAN 5 PERCENT) WHERE SHEET OR OVERLAND FLOWS (NOT EXCEEDING 0.5 CFS) ARE TYPICAL. THE METHOD SHALL NOT APPLY TO INLETS RECEIVING CONCENTRATED FLOWS, SUCH AS IN STREET OR HIGHWAY MEDIANS.



**EROSION NOTES:**

- ALL SILT FENCING SHALL BE INSTALLED AND SPACED ACCORDING TO FDOT INDEX #102.
- EROSION PROTECTION, SUCH AS STAKED BALED HAY AND SILT FENCE BARRIERS, MUST BE INSTALLED PRIOR TO START OF CONSTRUCTION.
- SILT FENCE BARRIER SHALL BE INSTALLED AS SHOWN ON PLANS, AND IN ALL AREAS SUBJECT TO SOIL EROSION SEDIMENTATION, SPECIFICALLY ADJACENT TO ALL BODIES OF WATER AND WETLAND AREAS WHERE THERE IS A POTENTIAL FOR DOWNSTREAM WATER QUALITY DEGRADATION.
- SEDIMENT AND EROSION CONTROL DEVICES SHALL REMAIN IN PLACE THROUGHOUT CONSTRUCTION AND SHALL BE REMOVED AT COMPLETION OF THE PROJECT.



- NOTES:**
- PIPE BEDDING: SELECT COMMON FILL COMPACTED TO 95% OF THE MAXIMUM DENSITY AS PER AASHTO T-180.
  - TRENCH BACKFILL: SELECT COMMON FILL COMPACTED TO 95% OF THE MAXIMUM DENSITY AS PER AASHTO T-180.
  - PIPE BEDDING UTILIZING SELECT COMMON FILL OR BEDDING ROCK IN ACCORDANCE WITH CLASS B BEDDING AND TRENCHING DETAIL MAY BE REQUIRED AS DIRECTED BY THE COUNTY.
  - (\*): 15" MAX. FOR PIPE DIAMETER LESS THAN 24", AND 24" MAX. FOR PIPE DIAMETER 24" AND LARGER.
  - WATER SHALL NOT BE PERMITTED IN THE TRENCH DURING CONSTRUCTION.
  - ALL PIPE TO BE INSTALLED WITH BELL FACING UPSTREAM TO THE DIRECTION OF THE FLOW.
  - REFER TO SECTION 32.5 OF THE MANUAL FOR SHEETING AND BRACING IN EXCAVATIONS.
  - PIPES SHALL UTILIZE TYPE A BEDDING, IF REQUIRED BY THE COUNTY. BEDDING DEPTH SHALL BE 4" MINIMUM FOR PIPE DIAMETER LESS THAN 15", AND 6" MINIMUM FOR PIPE DIAMETER 16" AND LARGER.
  - DEPTH FOR REMOVAL OF UNSUITABLE MATERIAL SHALL GOVERN DEPTH OF BEDDING ROCK BELOW THE PIPE. COUNTY SHALL DETERMINE IN THE FIELD REQUIRED REMOVAL OF UNSUITABLE MATERIAL TO REACH SUITABLE FOUNDATION.

**CLASS A BEDDING AND TRENCHING DETAIL**  
N.T.S.

Exhibit B - Drawings  
**AVCON, INC.**  
ENGINEERS & PLANNERS  
320 BAYSHORE DRIVE, SUITE A  
NICEVILLE, FL 32578-2425  
OFFICE: (850) 678-0040  
FAX: (850) 678-0040  
CORPORATE CERTIFICATE OF AUTHORIZATION NUMBER: 5057  
WWW.AVCONINC.COM

**TRANSFORMING TODAY'S IDEAS INTO TOMORROW'S REALITY**

**TONIA D. NATION**  
FL LICENSE NO.: 64631  
FBPR CERTIFICATE OF AUTHORIZATION NO. 5057

NO.	DATE	REVISION

**MISCELLANEOUS DETAILS (SHEET 2 OF 2)**  
RELEASE FOR BID

**ANCHORS STREET NORTHWEST STORMWATER IMPROVEMENTS**  
PREPARED FOR  
CITY OF FORT WALTON BEACH, FLORIDA

DESIGNED BY: TDN/CAP  
DRAWN BY: CAP  
CHECKED BY: VCL  
APPROVED BY: VCL  
PROJECT NO: 2017.238.01  
DATE: JANUARY 2019

**SHEET NUMBER C13**