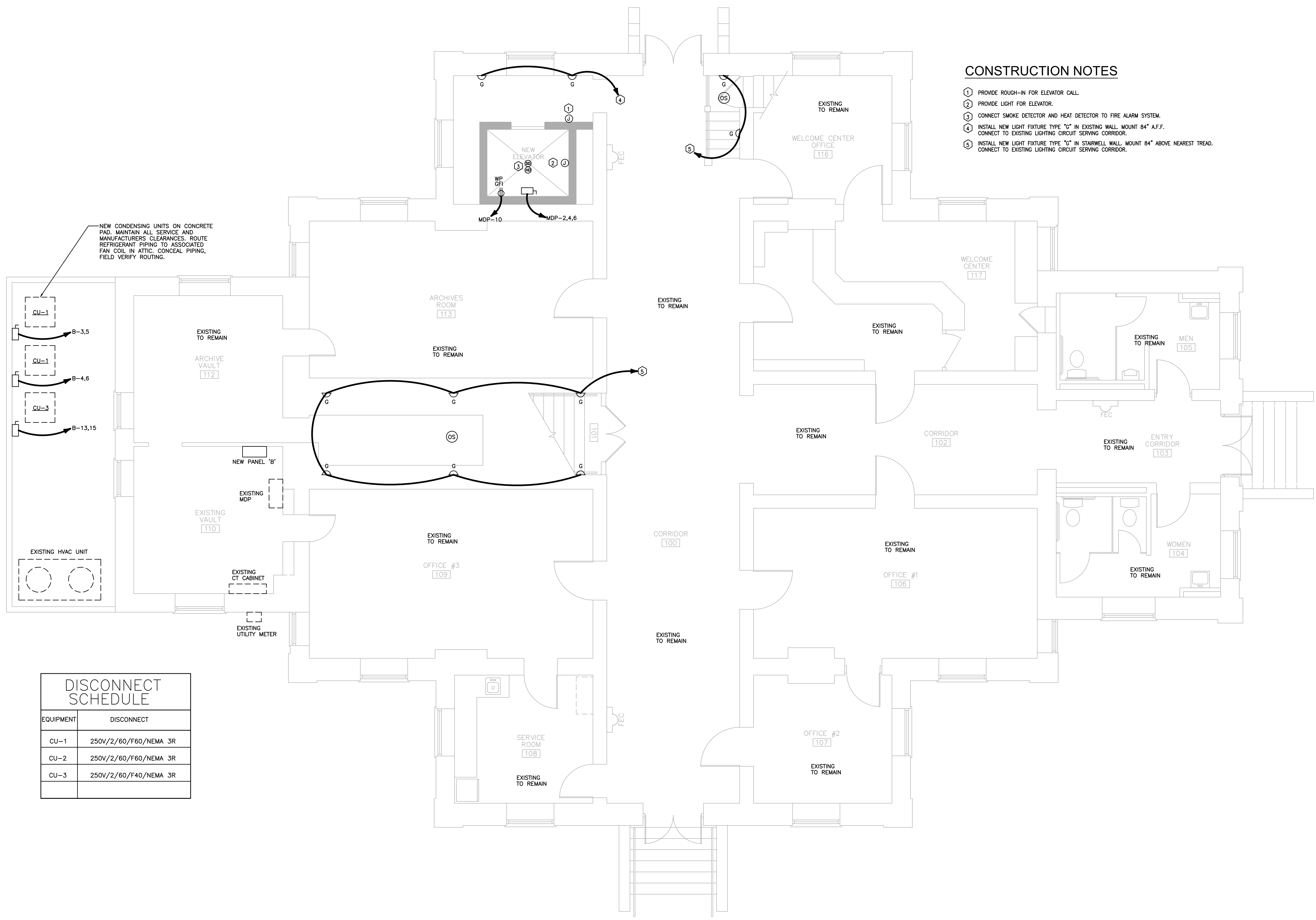


**CONSTRUCTION NOTES**

- ① PROVIDE ROUGH-IN FOR ELEVATOR CALL.
- ② PROVIDE LIGHT FOR ELEVATOR.
- ③ CONNECT SMOKE DETECTOR AND HEAT DETECTOR TO FIRE ALARM SYSTEM.
- ④ INSTALL NEW LIGHT FIXTURE TYPE "G" IN EXISTING WALL. MOUNT 84" A.F.F. CONNECT TO EXISTING LIGHTING CIRCUIT SERVING CORRIDOR.
- ⑤ INSTALL NEW LIGHT FIXTURE TYPE "G" IN STAIRWELL WALL. MOUNT 84" ABOVE NEAREST TREAD. CONNECT TO EXISTING LIGHTING CIRCUIT SERVING CORRIDOR.

NEW CONDENSING UNITS ON CONCRETE PAD. MAINTAIN ALL SERVICE AND MANUFACTURERS CLEARANCES. ROUTE REFRIGERANT PIPING TO ASSOCIATED FAN COIL IN ATTIC. CONCEAL PIPING. FIELD VERIFY ROUTING.



DISCONNECT SCHEDULE	
EQUIPMENT	DISCONNECT
CU-1	250V/2/60/F60/NEMA 3R
CU-2	250V/2/60/F60/NEMA 3R
CU-3	250V/2/60/F40/NEMA 3R

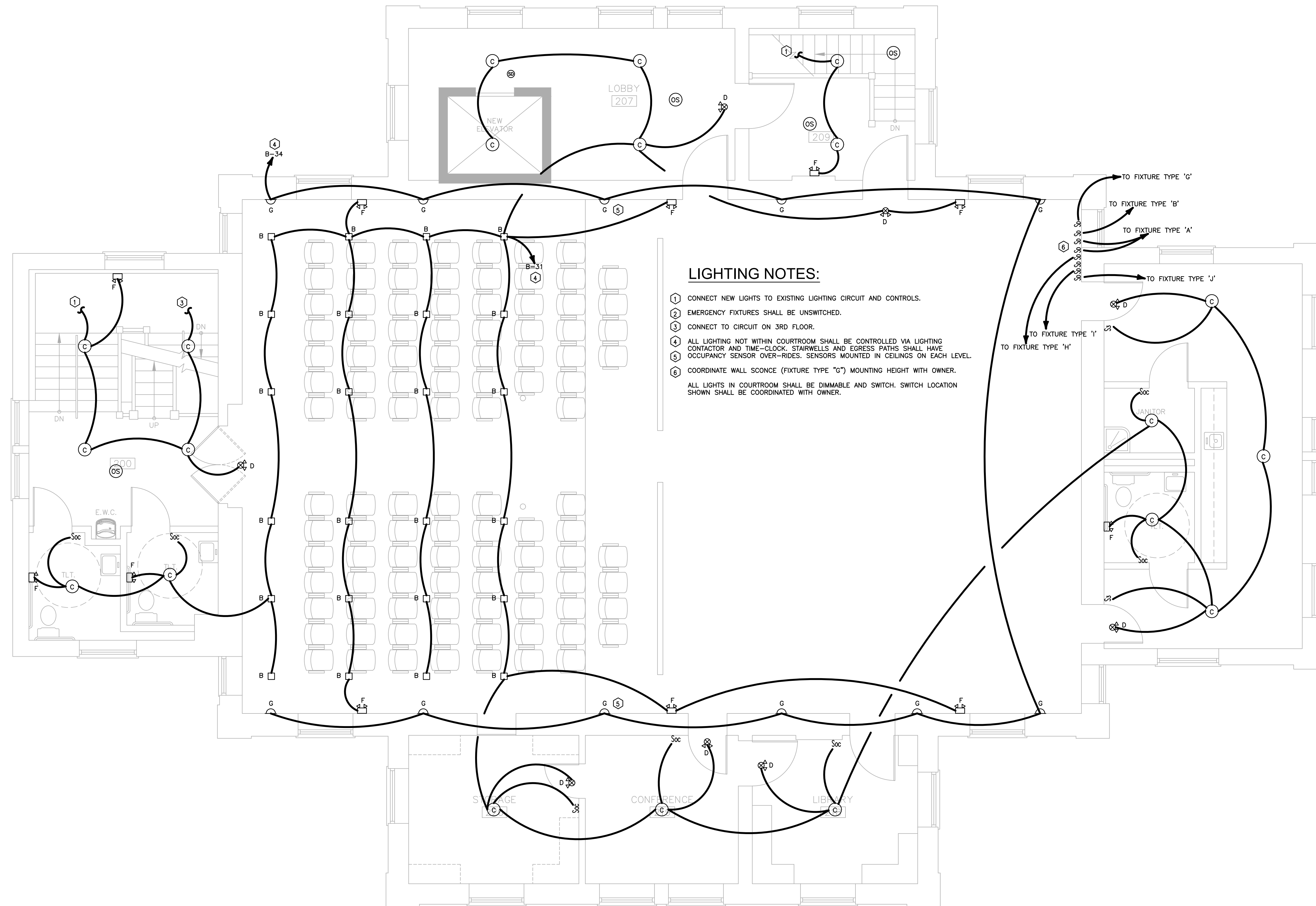
**FIRST LEVEL FLOOR PLAN - ELECTRICAL**  
 SCALE: 1/4"=1'

ARCHITECTURAL

JACKSON COUNTY HISTORIC COURTHOUSE  
 85 WASHINGTON STREET  
 JEFFERSON, GEORGIA 30549  
**BARKER, CUNNINGHAM, BARRINGTON, P.C.**  
 1780 SAWNEE OAKS LANE, CUMMING, GA 30040  
 678-341-9178

NO:  
 DATE: 8/28/2018  
 REV:

SHEET  
**E1**  
 OF .



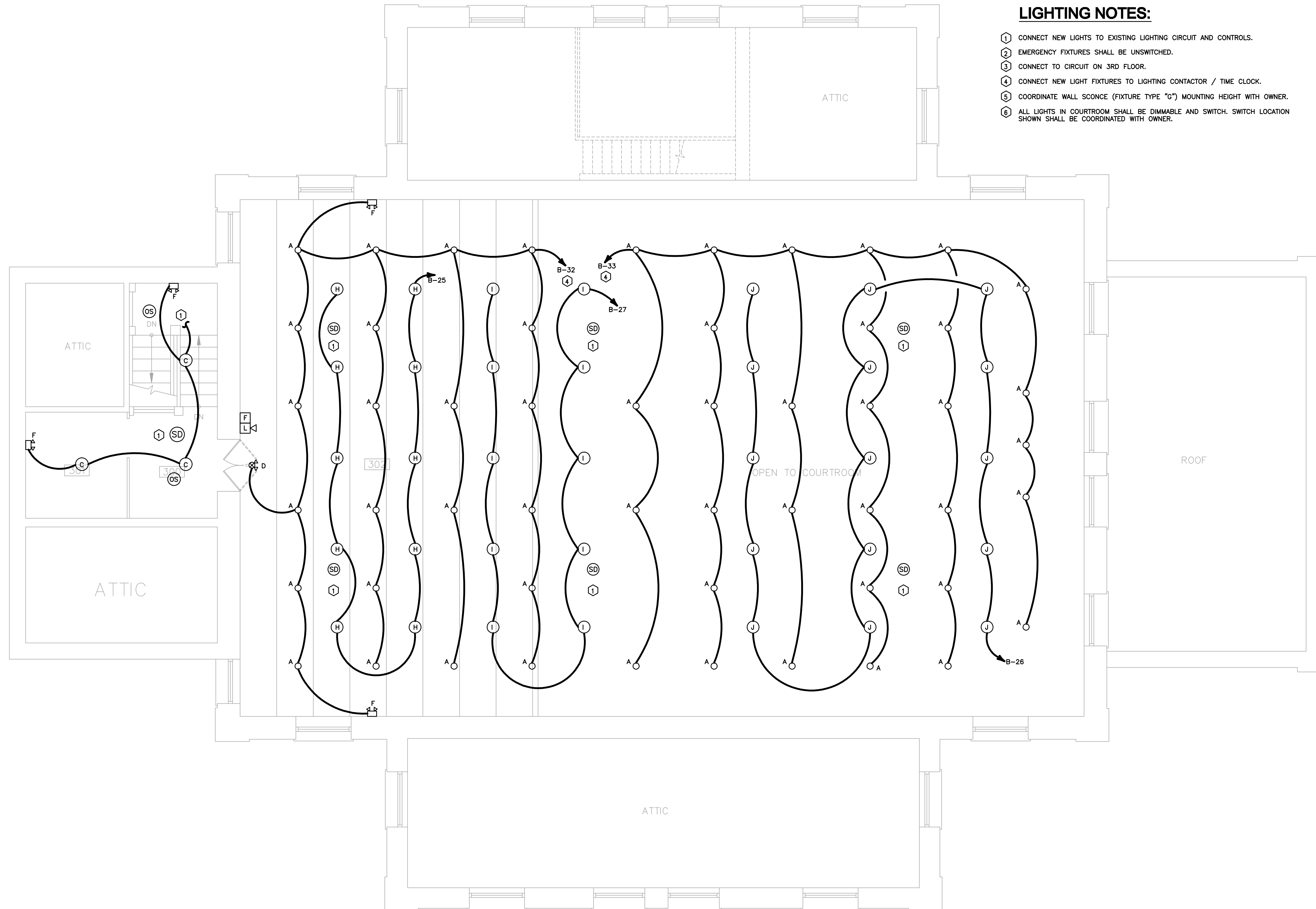
**SECOND LEVEL FLOOR PLAN - LIGHTING**  
 SCALE: 1/4"=1'

ARCHITECTURAL

JACKSON COUNTY HISTORIC COURTHOUSE  
 85 WASHINGTON STREET  
 JEFFERSON, GEORGIA 30549  
**BARKER, CUNNINGHAM, BARRINGTON, P.C.**  
 1780 SAWNEE OAKS LANE, CUMMING, GA 30040  
 678-341-9178

NO:  
 DATE: 8/28/2018  
 REV:

SHEET  
**E2**  
 OF .



**LIGHTING NOTES:**

- ① CONNECT NEW LIGHTS TO EXISTING LIGHTING CIRCUIT AND CONTROLS.
- ② EMERGENCY FIXTURES SHALL BE UNSWITCHED.
- ③ CONNECT TO CIRCUIT ON 3RD FLOOR.
- ④ CONNECT NEW LIGHT FIXTURES TO LIGHTING CONTACTOR / TIME CLOCK.
- ⑤ COORDINATE WALL SCONCE (FIXTURE TYPE "G") MOUNTING HEIGHT WITH OWNER.
- ⑥ ALL LIGHTS IN COURTROOM SHALL BE DIMMABLE AND SWITCH. SWITCH LOCATION SHOWN SHALL BE COORDINATED WITH OWNER.

**THIRD LEVEL FLOOR PLAN - LIGHTING**

SCALE: 1/4"=1'

ARCHITECTURAL

JACKSON COUNTY HISTORIC COURTHOUSE  
 85 WASHINGTON STREET  
 JEFFERSON, GEORGIA 30549  
**BARKER, CUNNINGHAM, BARRINGTON, P.C.**  
 1780 SAWNEE OAKS LANE, CUMMING, GA 30040  
 678-341-9178

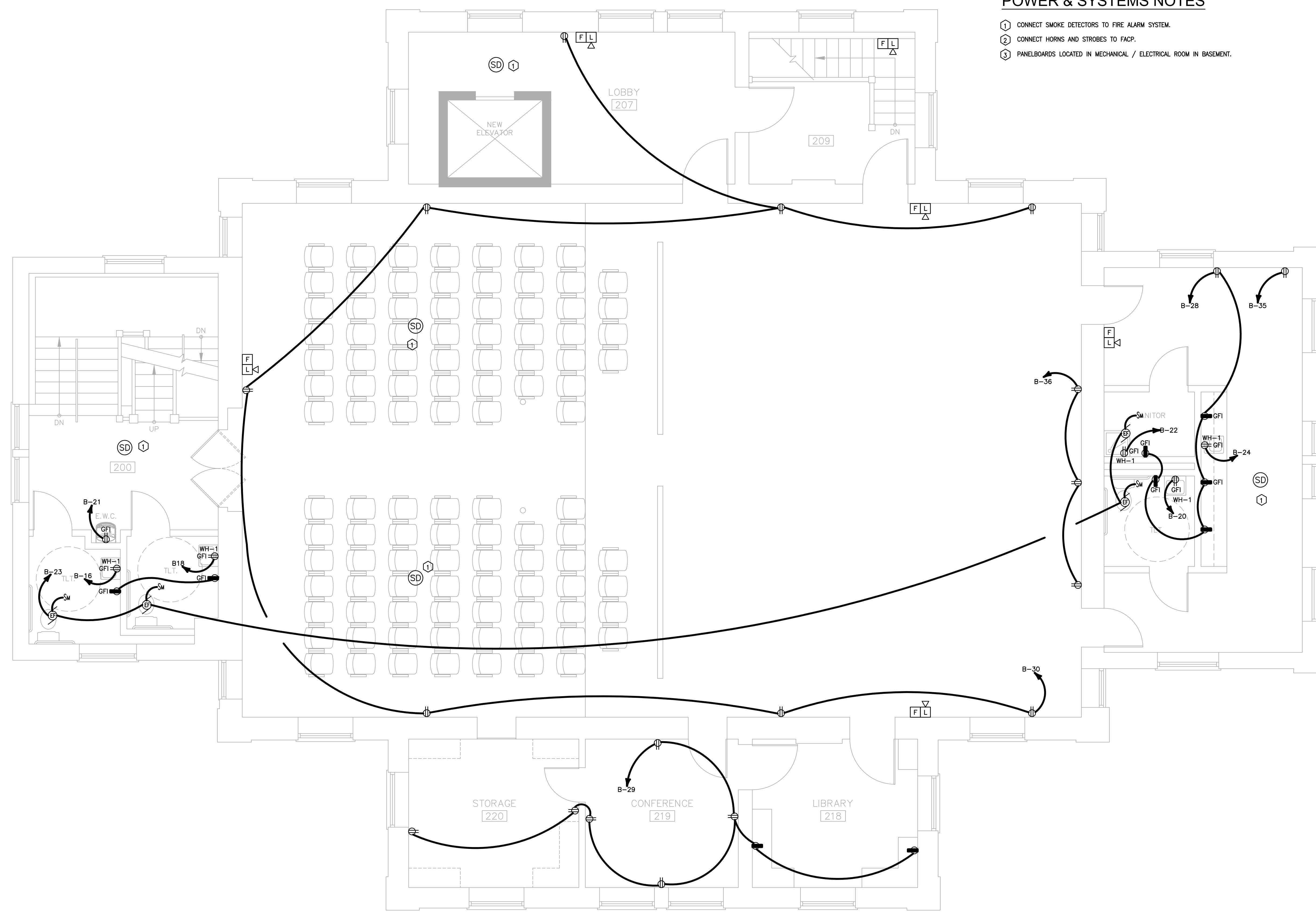
NO.  
 DATE: 8/28/2018  
 REV:

SHEET

**E3**

OF .

RELEASED FOR CONSTRUCTION



**POWER & SYSTEMS NOTES**

- ① CONNECT SMOKE DETECTORS TO FIRE ALARM SYSTEM.
- ② CONNECT HORNS AND STROBES TO FACP.
- ③ PANELBOARDS LOCATED IN MECHANICAL / ELECTRICAL ROOM IN BASEMENT.

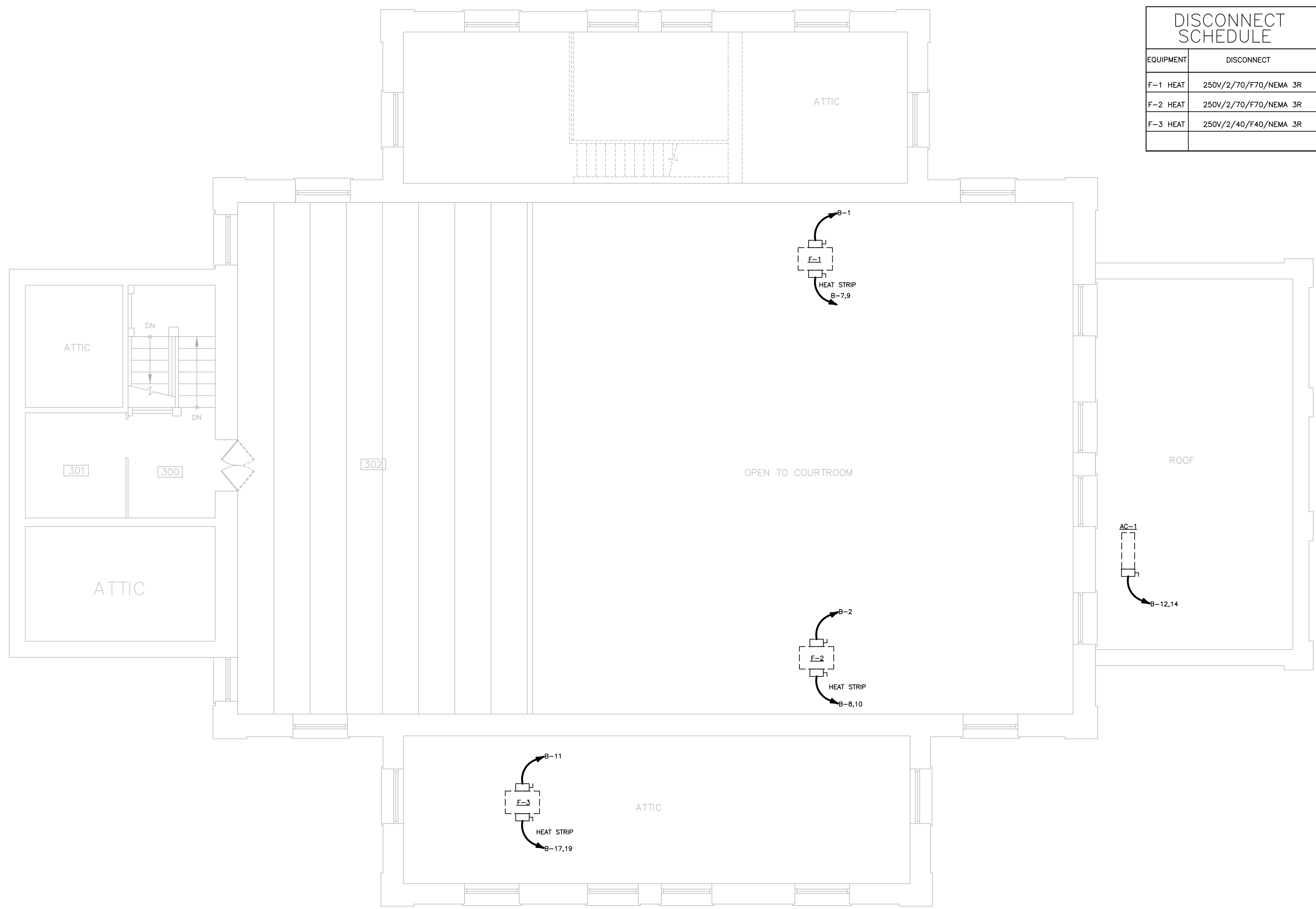
**SECOND LEVEL FLOOR PLAN - POWER & SYSTEMS**  
 SCALE: 1/4"=1'

ARCHITECTURAL

JACKSON COUNTY HISTORIC COURTHOUSE  
 85 WASHINGTON STREET  
 JEFFERSON, GEORGIA 30549  
**BARKER, CUNNINGHAM, BARRINGTON, P.C.**  
 1780 SAWNEE OAKS LANE, CUMMING, GA 30040  
 678-341-9178

NO:  
 DATE: 8/28/2018  
 REV: .

SHEET  
**E4**  
 OF .



DISCONNECT SCHEDULE	
EQUIPMENT	DISCONNECT
F-1 HEAT	250V/2/70/F70/NEMA 3R
F-2 HEAT	250V/2/70/F70/NEMA 3R
F-3 HEAT	250V/2/40/F40/NEMA 3R

**THIRD LEVEL FLOOR PLAN - POWER & SYSTEMS**  
 SCALE: 1/4"=1'

ARCHITECTURAL

JACKSON COUNTY HISTORIC COURTHOUSE  
 85 WASHINGTON STREET  
 JEFFERSON, GEORGIA 30549  
**BARKER, CUNNINGHAM, BARRINGTON, P.C.**  
 1780 SAWNEE OAKS LANE, CUMMING, GA 30040  
 678-341-9178

NO:  
 DATE: 8/28/2018  
 REV: .

SHEET  
**E5**  
 OF .

RELEASED FOR CONSTRUCTION



### FEEDER SCHEDULE - COPPER

FEEDER #	PHASE & NEUTRAL CONDUCTORS	GND CONDUCTOR (PER CONDUIT)	2-WIRE CONDUIT SIZE	3-WIRE CONDUIT SIZE	4-WIRE CONDUIT SIZE
(20)	12	12	1/2"	1/2"	1/2"
(25)	10	10	1/2"	3/4"	3/4"
(30)	10	10	1/2"	3/4"	3/4"
(35)	8	10	3/4"	3/4"	1"
(40)	8	10	3/4"	3/4"	1"
(45)	8	10	3/4"	3/4"	1"
(50)	8	10	3/4"	3/4"	1"
(60)	6	10	3/4"	1"	1-1/4"
(70)	4	8	1"	1-1/4"	1-1/4"
(80)	4	8	1"	1-1/4"	1-1/4"
(90)	4	8	1"	1-1/4"	1-1/4"
(100)	3	8	1"	1-1/4"	1-1/4"
(110)	2	6	1"	1-1/4"	1-1/2"
(120)	1	6	1-1/4"	1-1/2"	2"
(150)	1/0	6	1-1/4"	1-1/2"	2"
(170)	2/0	6	1-1/4"	2"	2"
(200)	3/0	6	1-1/2"	2"	2-1/2"
(220)	4/0	4	1-1/2"	2"	2-1/2"
(250)	250	4	2"	2-1/2"	3"
(300)	350	4	2"	3"	3"
(350)	500	3	—	3"	3-1/2"
(400)	500	3	—	3"	3-1/2"
(450)	(2) 4/0	2	—	(2) 2"	(2) 2-1/2"
(500)	2-250	2	—	(2) 2-1/2"	(2) 3"
(600)	2-350	1	—	(2) 3"	(2) 3"
(700)	2-500	1/0	—	(2) 3-1/2"	(2) 3-1/2"
(800)	2-500	1/0	—	(2) 3-1/2"	(2) 3-1/2"
(1000)	3-500	2/0	—	(3) 3-1/2"	(3) 3-1/2"
(1200)	3-600	3/0	—	(3) 3-1/2"	(3) 4"
(1600)	4-600	4/0	—	(4) 3-1/2"	(4) 4"
(2000)	5-600	250	—	(5) 4"	(5) 4"
(2500)	6-600	350	—	(6) 4"	(6) 4"
(3000)	7-750	400	—	(7) 4"	(7) 4"

NOTES:  
 1. 3 PHASE, 3 WIRE FEEDERS (WITHOUT A NEUTRAL) ARE DESIGNATED THUS: ☉  
 2. 3 PHASE, 4 WIRE FEEDERS (WITH A NEUTRAL) ARE DESIGNATED THUS: ☉N  
 3. SINGLE PHASE, 2 WIRE FEEDERS (WITHOUT A NEUTRAL) ARE DESIGNATED THUS: ☉SP  
 4. SINGLE PHASE, 3 WIRE FEEDERS (WITH A NEUTRAL) ARE DESIGNATED THUS: ☉SPN

### LIGHT FIXTURE SCHEDULE

TYPE	MANUFACTURER & CATALOG NO.	LAMPS	MOUNTING	REMARKS
A	LITHONIA REAL EC-06MW-DESL-1500L-40K-955C-120-BVL-PFM	18W LED	RECESSED	120V LED CAN, DIMMABLE
B	LITHONIA 2A2CLX2	18W LED	SURFACE	120V LUMINAIRE, DIMMABLE
C	LITHONIA FMLRL11	48W LED	SURFACE	120V 11" ROUND, DIMMABLE
D	LITHONIA LHQM-S-W-1-R-HO	INCL.	WALL/CEILING	LED EXIT W/ DUAL HEAD EM, BATTERY
F	LITHONIA ELM2-LED	INCL.	WALL	LED DUAL HEAD EM, BATTERY
G	FEISS WB1236BRB	11W LED	WALL FLUSH	120V SCONCE, DIMMABLE
H	FEISS SF193BRB	(2) 13W LED	SEMI-FLUSH	120V DIMMABLE
I	FEISS F1919/6+1BRB	(7) G16.5 CANDELABRA	CHANDELIER	120V DIMMABLE
J	FEISS F1918/12+1BRB	(7) G16.5 CANDELABRA	CHANDELIER	120V DIMMABLE

NOTES:  
 1. LIGHT FIXTURES TO BE SUBMITTED FOR APPROVAL BY OWNER.  
 2. CONTRACTOR SHALL PROVIDE OWNER WITH OPTIONS ON LIGHTING FIXTURES.  
 3. CONTRACTOR SHALL PROVIDE OWNER WITH COLOR SELECTIONS FOR LIGHTING FIXTURES.

### ELECTRICAL LEGEND (ALL SYMBOLS MAY NOT BE APPLICABLE TO THIS PROJECT)

SYMBOL	DESCRIPTION	MTG. HT. TO CENTERLINE
LIGHTING FIXTURES & DEVICES		
(A)	LIGHT FIXTURE TYPE DESIGNATION- SEE LIGHTING FIXTURE SCHEDULE FOR MOUNTING AND LAMP TYPE.	
○	INCANDESCENT, FLUORESCENT OR H.I.D. FIXTURE. ON NORMAL BRANCH CIRCUIT.	
○ □	WALL MOUNTED (INCANDESCENT, FLUORESCENT, OR H.I.D.) FIXTURE ON NORMAL BRANCH CIRCUIT.	AS NOTED
↑	EXIT SIGN WITH BATTERY PACK, DUAL EM HEAD. PROVIDE ARROWS AS INDICATED.	WALL MOUNT 7'-6" A.F.F.
↔	DOUBLE HEAD EMERGENCY EGRESS FIXTURE WITH BUILT IN BATTERY PACK.	WALL MOUNT 7'-6" A.F.F.
△	DUAL REMOTE EMERGENCY HEAD	WALL MOUNT 7'-6" A.F.F.
S	SINGLE-POLE SWITCH (K=KEY OPERATED, P= WITH PILOT LIGHT, & WP=NEMA 3R WEATHER-PROOF DEVICE)	48" A.F.F.
SoC	OCCUPANCY SENSOR	48" A.F.F.
S3	THREE-WAY SWITCH (SEE TYPE ABBREVIATIONS)	48" A.F.F.
S4	FOUR-WAY SWITCH (SEE TYPE ABBREVIATIONS)	48" A.F.F.
(PE)	PHOTO ELECTRIC CELL	
TELEPHONE/DATA SYSTEM		
▶	TELEPHONE/DATA OUTLET (W=WALL MOUNTED AT +46", WITH MIN. 3/4" EMPTY CONDUIT, WITH PULL WIRE, EXTENDING TO ACCESSIBLE SPACE FROM OUTLET BOX.	18" A.F.F.
▶	TELEPHONE/DATA OUTLET AT SPECIAL MTG. HEIGHT (HT= TELEPHONE FOR HANDICAPPED USE, MOUNT 46" AFF) WITH MIN. 3/4" EMPTY CONDUIT, WITH PULL WIRE, EXTENDING TO ACCESSIBLE CEILING SPACE FROM OUTLET BOX.	54" A.F.F. (U.O.N.)
▶	TELEPHONE/DATA FLOOR BOX	
▶	TELEPHONE TERMINAL BOARD	
MECHANICAL EQUIPMENT		
⊗	MOTOR (HORSEPOWER AS NOTED)	
⊗	FRACTIONAL HORSEPOWER	
⊗	EXHAUST FAN	
WIRING DEVICES		
⊕	120 VOLT DUPLEX RECEPTACLE. 20 AMPS U.O.N. (WP = NEMA 3R, ST = SAFETY TYPE) (GFI = GROUND FAULT INTERRUPTER)	18" A.F.F.
⊕	120 VOLT DUPLEX RECEPTACLE AT SPECIAL MTG. HEIGHT (SEE TYPE ABBREVIATIONS ABOVE.)	54" A.F.F. (U.O.N.)
⊕	120 VOLT QUADRAPLEX RECEPTACLE (SEE TYPE ABBREVIATIONS ABOVE.)	18" A.F.F.
⊕	120 VOLT QUADRAPLEX RECEPTACLE AT SPECIAL MTG. HEIGHT (SEE ABBREVIATIONS ABOVE.)	44" A.F.F. (U.O.N.)
⊕	SINGLE RECEPTACLE, VOLTS, PHASE AND AMPS AS NOTED, NEMA CONFIGURATION AS REQUIRED BY EQUIPMENT.	18" A.F.F. (U.O.N.)
⊕	JUNCTION BOX	AS NOTED
⊕	MANUAL MOTOR STARTING SWITCH (WP=NEMA 3R WEATHERPROOF, T=THERMAL TYPE)	46" A.F.F. (U.O.N.)
⊕	120 VOLT DUPLEX FLOOR BOX	
FIRE ALARM		
(SD)	CEILING MOUNTED SMOKE DETECTOR	
(HD)	CEILING MOUNTED HEAT DETECTOR	
(F)	FIRE ALARM PULL STATION	46" A.F.F.
(L)	FIRE ALARM STROBE	6'-8" A.F.F.
(L)	FIRE ALARM HORN / STROBE	6'-8" A.F.F.
(FACP)	FIRE ALARM CONTROL PANEL	
(DSD)	DUCT SMOKE DETECTOR - SUPPLY / RETURN	
(TS)	TAMPER SWITCH	
(FS)	FLOW SWITCH	

### ELECTRICAL LEGEND (ALL SYMBOLS MAY NOT BE APPLICABLE TO THIS PROJECT)

SYMBOL	DESCRIPTION	MTG. HT. TO CENTERLINE
CONDUIT		
⌒	CONDUIT CONCEALED ABOVE CLG. OR IN WALL	
⌒	CONDUIT CONCEALED IN OR BELOW FLOOR SLAB (WHERE USED OUTSIDE=UNDERGROUND)	
↪	HOME RUN TO PANELBOARD INDICATES (MIN. 2 #12, 12G IN 3/4" C. ADD NO. OF PHASE CONDUCTORS TO MATCH NO. OF ARROWHEADS.	
DISTRIBUTION EQUIPMENT		
⊗	NON-FUSIBLE SAFETY SWITCH SIZE & TYPE AS NOTED (VOLTS/POLES/AMPS/ENCLOSURE). NEMA 1. IF NOT NOTED RT=NEMA 3R)	AS NOTED
⊗	FUSIBLE SAFETY SWITCH SIZE & TYPE AS NOTED (VOLTS/POLES/AMPS/FUSE/ENCLOSURE). NEMA 1 IF NOT NOTED RT=NEMA 3R)	AS NOTED
⊗	LIGHTING PANELBOARD-SURFACE MOUNTED	AS NOTED
(LC)	LIGHTING CONTACTOR	
ABBREVIATIONS		
ABC	ABOVE COUNTER	
A/C	AIR CONDITIONER	
ADA	AMERICANS WITH DISABILITIES ACT	
AFF	ABOVE FINISHED FLOOR	
AFG	ABOVE FINISHED GRADE	
AHU	AIR HANDLING UNIT	
B	BLANK OFF DEVICE. PROVIDE 3/4" CONDUIT MINIMUM TO ABOVE ACCESSIBLE CEILING AND BUSH. PROVIDE NYLON PULL STRING.	
C	CONDUIT	
CL	CENTERLINE	
CU	CONDENSING UNIT	
CVU	FAN POWERED HVAC TERMINAL UNIT	
EF	EXHAUST FAN	
EH	ELECTRIC HEATER	
EW	ELECTRIC WATER HEATER	
EWC	ELECTRIC WATER COOLER	
GFI	GROUND FAULT INTERRUPTER	
GND	GROUND	
MTD	MOUNTED ON CENTER	
OC	OTHERS FURNISHED CONTRACTOR INSTALLED	
OFCI	TELEPHONE TERMINAL BOARD	
TTB	TELEPHONE TERMINAL BOARD	
UON	UNLESS OTHERWISE NOTED	
WP	WEATHERPROOF (NEMA 3R)	
MARK STANDARDS		
(B)	SECTION MARK	
(E)	DETAIL MARK	
(E)	CONSTRUCTION NOTE	

### PANELBOARD SCHEDULE B

VOLTAGE	120/208	AMPS	225	MOUNTING	SURFACE	NOTES:
PHASE	3	MAIN		ENCLOSURE	NEMA 1	
WIRE	4	MIN AIC	10,000			

#### CONNECTED LOADS

CIR#	TYPE	DESCRIPTION	BKR	CKT*	KVA	PHASE	KVA	CKT*	BKR	DESCRIPTION	TYPE	CIR#
1	M	F-1	20/1	1.3	A	1.3	20/1	F-2	M	2		
3	M	CU-1	50/2	3.2	B	3.2	50/2	CU-2	M	4		
5	M	I	I	3.2	C	3.2	I	I	M	6		
7	H	12.5 KW HEAT STRIP	70/2	6.9	A	6.9	70/2	12.5 KW HEAT STRIP	H	8		
9	H	I	I	6.9	B	6.9	I	I	H	10		
11	M	F-3	20/1	0.6	C	0.7	15/2	AC-1	M	12		
13	M	CU-3	30/2	2.0	A	0.7	I	I	M	14		
15	M	I	I	2.0	B	1.4	20/1	WH-1	H	16		
17	H	6 KW HEAT STRIP	35/2	3.4	C	1.4	20/1	WH-1	H	18		
19	H	I	I	3.4	A	1.4	20/1	WH-1	H	20		
21	M	WATER COOLER	20/1	0.7	B	1.4	20/1	WH-1	H	22		
23	N	EXHAUST FANS	20/1	0.4	C	1.4	20/1	WH-1	H	24		
25	N	DECORATIVE LIGHTS	20/1	0.3	A	1.8	20/1	CHANDELIERS	N	26		
27	N	CHANDELIERS	20/1	1.2	B	1.2	20/1	RECEPTACLES	R	28		
29	R	RECEPTACLES	20/1	1.6	C	1.6	20/1	RECEPTACLES	R	30		
31	L	LIGHTS	20/1	1.2	A	0.5	20/1	LIGHTS	L	32		
33	L	LIGHTS	20/1	0.7	B	0.2	20/1	LIGHTS	L	34		
35	P	SOUND SYSTEM	20/1	1.0	C	0.6	20/1	RECEPTACLES	R	36		
37					A					38		
39					B					40		
41					C					42		

NOTES:  
 LOAD SUMMARY

LOAD TYPE	CONNT KVA	ADJ FACTOR	DMD KVA	CONNECTED KVA	
APPLIANCE (A)	0.0	100%	0.0	CONNECTED KVA	74.8
ELECTRIC HEAT (H)	41.4	100%	41.4	DEMAND KVA	76.7
LIGHTING (L)	2.6	125%	3.3	DEMAND AMPS	213.1
NON-COIT MOTORS (M)	22.1	100%	22.1		
RECEPTACE (R)	5.0	125%	6.3	PHASE A CONNECTED AMPS	230.8
OTHER COIT (C)	0.0	125%	0.0	PHASE B CONNECTED AMPS	241.7
OTHER NON-COIT (N)	3.7	100%	3.7	PHASE C CONNECTED AMPS	159.2
KITCHEN EQUIPMENT*	0.0	60%	0.0	MAX IN-BALANCE	39%

### POWER PANEL SCHEDULE MDP

VOLTAGE	120/208	AMPS	600	MOUNTING	SURFACE	NOTES:
PHASE	3	MAIN	MB	ENCLOSURE	NEMA 1	
WIRE	4	MIN AIC	14K			

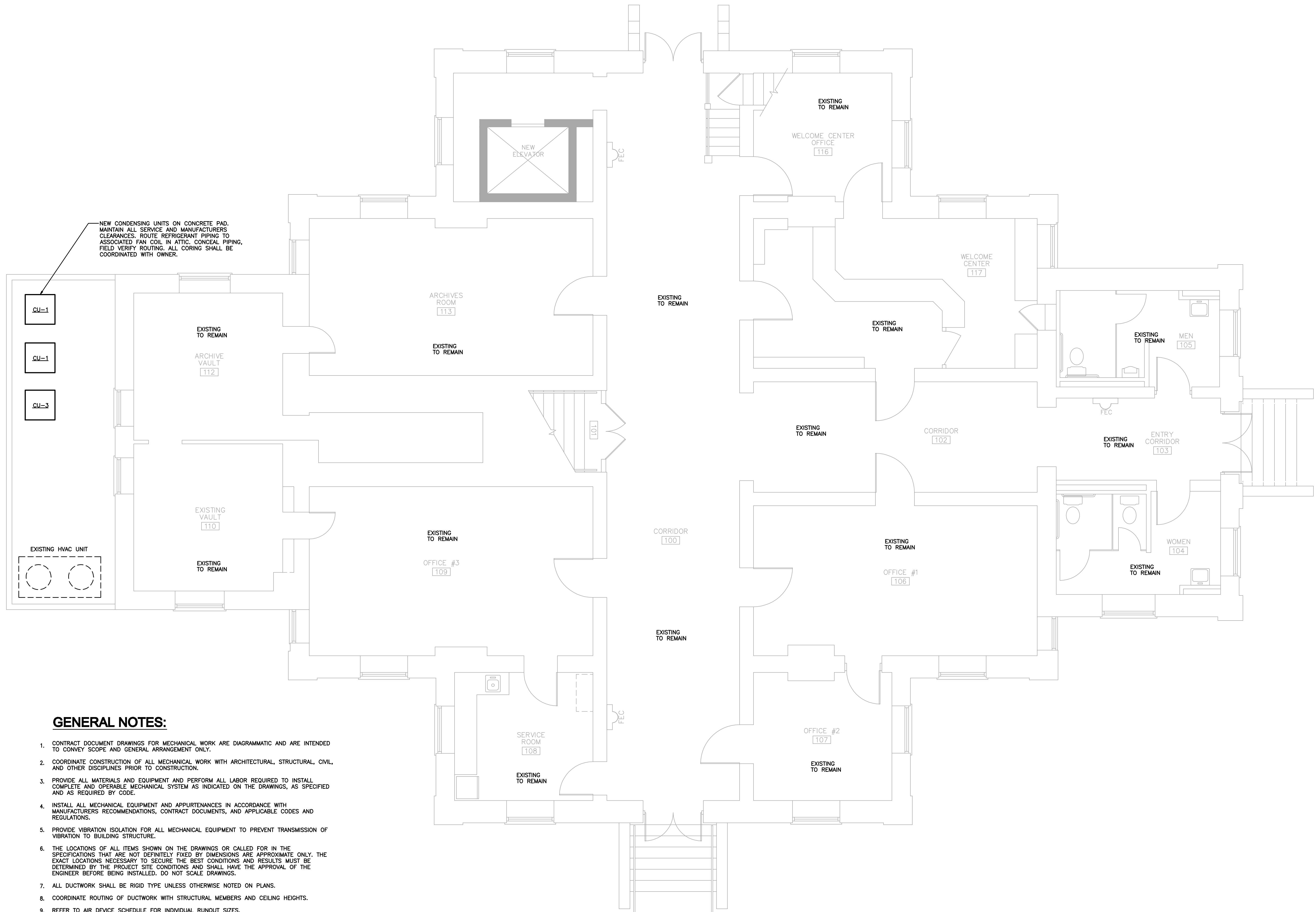
#### CONNECTED LOADS

CIR#	TYPE	DESCRIPTION	BKR	CKT*	KVA	PHASE	KVA	CKT*	BKR	DESCRIPTION	TYPE	CIR#
1	N	VRF0-01	50/3	5.9	A	*				ELEVATOR	N	2
3	N	I	I	5.9	B	*				I	N	4
5	N	I	I	5.9	C	*				I	N	6
7	N	PANEL A	200/3	13.1	A	0.1				ELEVATOR LIGHTS	L	8
9	N	I	I	11.3	B	0.2				ELEVATOR RECEPT	R	10
11	N	I	I	10.8	C	18.4				PANEL B	N	12
13	N	EXIST REC-BASEMENT/EXT	20/1	0.4	A	27.7				I	N	14
15	N	LTC-BASEMENT	20/1	0.2	B	29.0				I	N	16
17					A							18
19					C							20
21					B							22
23					C							24

NOTES:  
 \* PANEL MDP IS EXISTING. INFORMATION OBTAINED IS FROM PREVIOUS RENOVATION DRAWINGS DATED 11/15/2012  
 \* NOTE ELEVATOR LOAD TO BE DETERMINED, 208V 3-PHASE

#### LOAD SUMMARY

CONNECTED KVA	0.0
DEMAND KVA	0.0
DEMAND AMPS	0.0
PHASE A CONNECTED AMPS	393.3
PHASE B CONNECTED AMPS	388.3
PHASE C CONNECTED AMPS	292.5
MAX IN-BALANCE	28%



**GENERAL NOTES:**

1. CONTRACT DOCUMENT DRAWINGS FOR MECHANICAL WORK ARE DIAGRAMMATIC AND ARE INTENDED TO CONVEY SCOPE AND GENERAL ARRANGEMENT ONLY.
2. COORDINATE CONSTRUCTION OF ALL MECHANICAL WORK WITH ARCHITECTURAL, STRUCTURAL, CIVIL, AND OTHER DISCIPLINES PRIOR TO CONSTRUCTION.
3. PROVIDE ALL MATERIALS AND EQUIPMENT AND PERFORM ALL LABOR REQUIRED TO INSTALL COMPLETE AND OPERABLE MECHANICAL SYSTEM AS INDICATED ON THE DRAWINGS, AS SPECIFIED AND AS REQUIRED BY CODE.
4. INSTALL ALL MECHANICAL EQUIPMENT AND APPURTENANCES IN ACCORDANCE WITH MANUFACTURERS RECOMMENDATIONS, CONTRACT DOCUMENTS, AND APPLICABLE CODES AND REGULATIONS.
5. PROVIDE VIBRATION ISOLATION FOR ALL MECHANICAL EQUIPMENT TO PREVENT TRANSMISSION OF VIBRATION TO BUILDING STRUCTURE.
6. THE LOCATIONS OF ALL ITEMS SHOWN ON THE DRAWINGS OR CALLED FOR IN THE SPECIFICATIONS THAT ARE NOT DEFINITELY FIXED BY DIMENSIONS ARE APPROXIMATE ONLY. THE EXACT LOCATIONS NECESSARY TO SECURE THE BEST CONDITIONS AND RESULTS MUST BE DETERMINED BY THE PROJECT SITE CONDITIONS AND SHALL HAVE THE APPROVAL OF THE ENGINEER BEFORE BEING INSTALLED. DO NOT SCALE DRAWINGS.
7. ALL DUCTWORK SHALL BE RIGID TYPE UNLESS OTHERWISE NOTED ON PLANS.
8. COORDINATE ROUTING OF DUCTWORK WITH STRUCTURAL MEMBERS AND CEILING HEIGHTS.
9. REFER TO AIR DEVICE SCHEDULE FOR INDIVIDUAL RUNOUT SIZES.
10. ALL DUCTWORK SHALL BE RIGID, EXCEPT 5' FLEXIBLE CONNECTIONS TO AIR DEVICES.

**FIRST LEVEL FLOOR PLAN - HVAC**

SCALE: 1/4"=1'

RELEASED FOR CONSTRUCTION

ARCHITECTURAL

JACKSON COUNTY HISTORIC COURTHOUSE  
 85 WASHINGTON STREET  
 JEFFERSON, GEORGIA 30549  
**BARKER, CUNNINGHAM, BARRINGTON, P.C.**  
 1780 SAWNEE OAKS LANE, CUMMING, GA 30040  
 678-341-9178

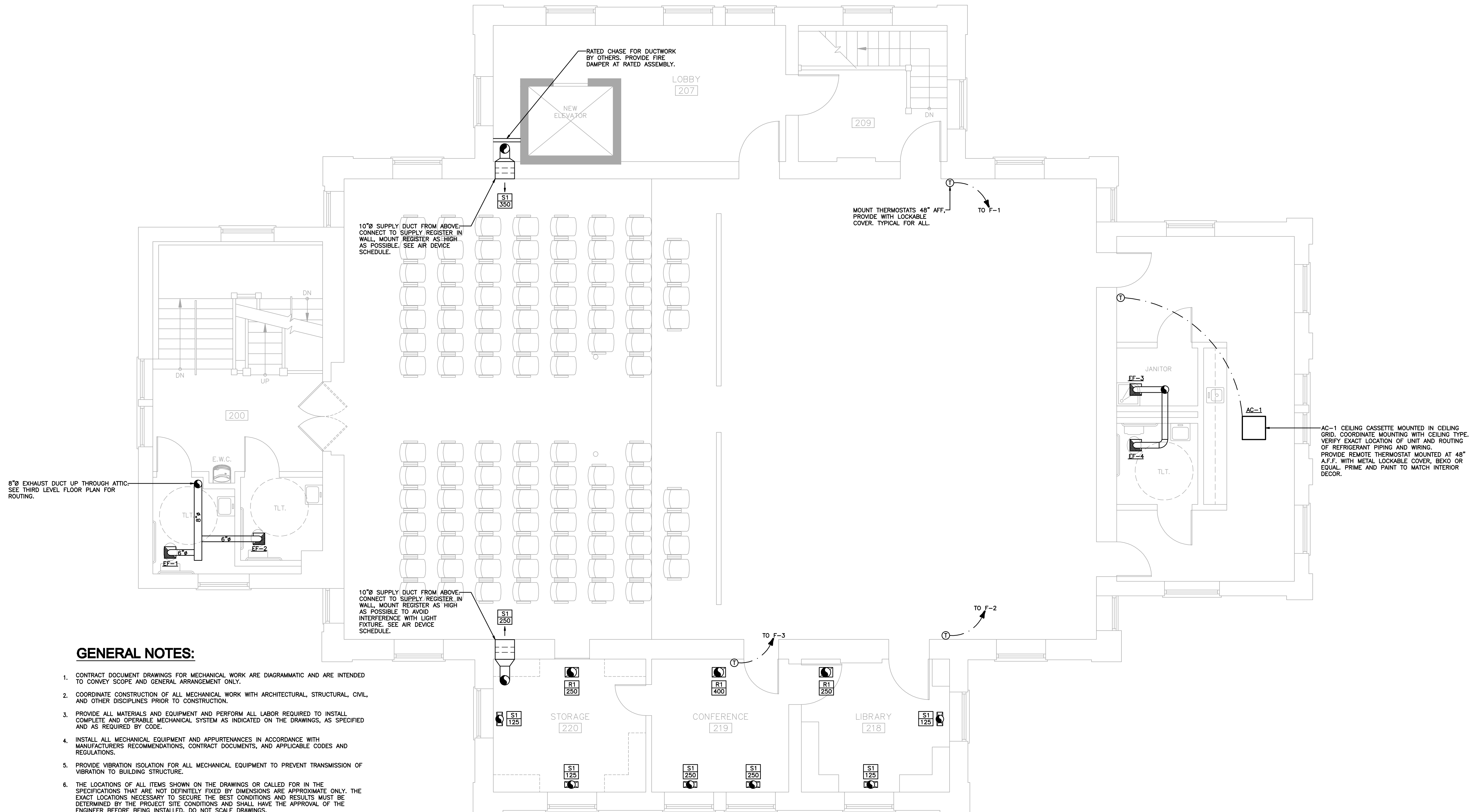
NO.  
 DATE: 8/28/2018  
 REV:

SHEET

M1

OF .





**GENERAL NOTES:**

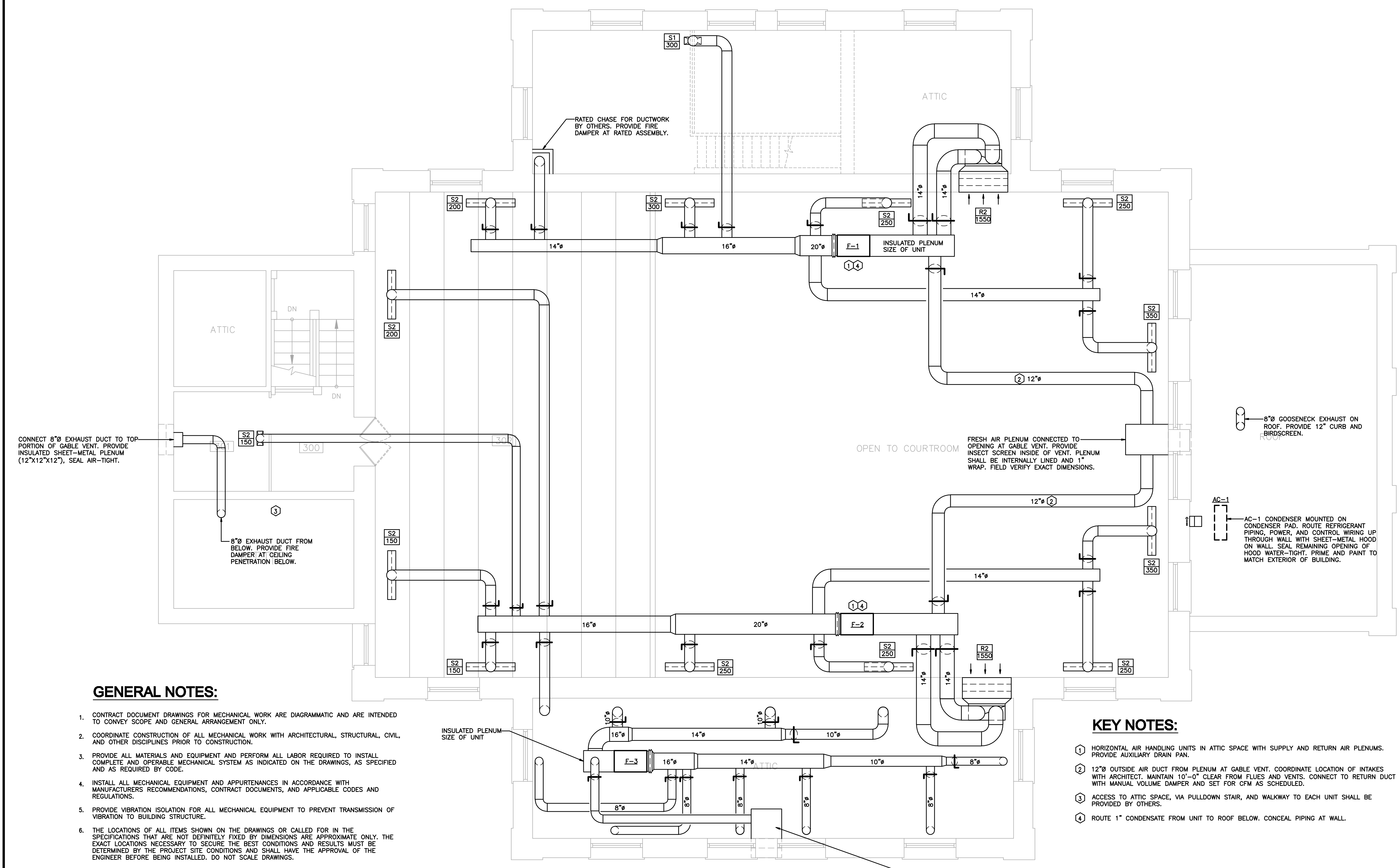
1. CONTRACT DOCUMENT DRAWINGS FOR MECHANICAL WORK ARE DIAGRAMMATIC AND ARE INTENDED TO CONVEY SCOPE AND GENERAL ARRANGEMENT ONLY.
2. COORDINATE CONSTRUCTION OF ALL MECHANICAL WORK WITH ARCHITECTURAL, STRUCTURAL, CIVIL, AND OTHER DISCIPLINES PRIOR TO CONSTRUCTION.
3. PROVIDE ALL MATERIALS AND EQUIPMENT AND PERFORM ALL LABOR REQUIRED TO INSTALL COMPLETE AND OPERABLE MECHANICAL SYSTEM AS INDICATED ON THE DRAWINGS, AS SPECIFIED AND AS REQUIRED BY CODE.
4. INSTALL ALL MECHANICAL EQUIPMENT AND APPURTENANCES IN ACCORDANCE WITH MANUFACTURERS' RECOMMENDATIONS, CONTRACT DOCUMENTS, AND APPLICABLE CODES AND REGULATIONS.
5. PROVIDE VIBRATION ISOLATION FOR ALL MECHANICAL EQUIPMENT TO PREVENT TRANSMISSION OF VIBRATION TO BUILDING STRUCTURE.
6. THE LOCATIONS OF ALL ITEMS SHOWN ON THE DRAWINGS OR CALLED FOR IN THE SPECIFICATIONS THAT ARE NOT DEFINITELY FIXED BY DIMENSIONS ARE APPROXIMATE ONLY. THE EXACT LOCATIONS NECESSARY TO SECURE THE BEST CONDITIONS AND RESULTS MUST BE DETERMINED BY THE PROJECT SITE CONDITIONS AND SHALL HAVE THE APPROVAL OF THE ENGINEER BEFORE BEING INSTALLED. DO NOT SCALE DRAWINGS.
7. ALL DUCTWORK SHALL BE RIGID TYPE UNLESS OTHERWISE NOTED ON PLANS.
8. COORDINATE ROUTING OF DUCTWORK WITH STRUCTURAL MEMBERS AND CEILING HEIGHTS.
9. REFER TO AIR DEVICE SCHEDULE FOR INDIVIDUAL RUNOUT SIZES.
10. ALL DUCTWORK SHALL BE RIGID, EXCEPT 5' FLEXIBLE CONNECTIONS TO AIR DEVICES.

**SECOND LEVEL FLOOR PLAN - HVAC**

SCALE: 1/4"=1'

RELEASED FOR CONSTRUCTION





CONNECT 8" Ø EXHAUST DUCT TO TOP PORTION OF GABLE VENT. PROVIDE INSULATED SHEET-METAL PLENUM (12"x12"x12"), SEAL AIR-TIGHT.

8" Ø EXHAUST DUCT FROM BELOW. PROVIDE FIRE DAMPER AT CEILING PENETRATION BELOW.

RATED CHASE FOR DUCTWORK BY OTHERS. PROVIDE FIRE DAMPER AT RATED ASSEMBLY.

OPEN TO COURTHOUSE

FRESH AIR PLENUM CONNECTED TO OPENING AT GABLE VENT. PROVIDE INSECT SCREEN INSIDE OF VENT. PLENUM SHALL BE INTERNALLY LINED AND 1" WRAP. FIELD VERIFY EXACT DIMENSIONS.

8" Ø GOOSENECK EXHAUST ON ROOF. PROVIDE 12" CURB AND BIRDSCREEN.

AC-1 CONDENSER MOUNTED ON CONDENSER PAD. ROUTE REFRIGERANT PIPING, POWER, AND CONTROL WIRING UP THROUGH WALL WITH SHEET-METAL HOOD ON WALL. SEAL REMAINING OPENING OF HOOD WATER-TIGHT. PRIME AND PAINT TO MATCH EXTERIOR OF BUILDING.

FRESH AIR PLENUM CONNECTED TO OPENING AT GABLE VENT. PROVIDE INSECT SCREEN INSIDE OF VENT. PLENUM SHALL BE INTERNALLY LINED AND 1" WRAP. FIELD VERIFY EXACT DIMENSIONS.

**GENERAL NOTES:**

1. CONTRACT DOCUMENT DRAWINGS FOR MECHANICAL WORK ARE DIAGRAMMATIC AND ARE INTENDED TO CONVEY SCOPE AND GENERAL ARRANGEMENT ONLY.
2. COORDINATE CONSTRUCTION OF ALL MECHANICAL WORK WITH ARCHITECTURAL, STRUCTURAL, CIVIL, AND OTHER DISCIPLINES PRIOR TO CONSTRUCTION.
3. PROVIDE ALL MATERIALS AND EQUIPMENT AND PERFORM ALL LABOR REQUIRED TO INSTALL COMPLETE AND OPERABLE MECHANICAL SYSTEM AS INDICATED ON THE DRAWINGS, AS SPECIFIED AND AS REQUIRED BY CODE.
4. INSTALL ALL MECHANICAL EQUIPMENT AND APPURTENANCES IN ACCORDANCE WITH MANUFACTURERS' RECOMMENDATIONS, CONTRACT DOCUMENTS, AND APPLICABLE CODES AND REGULATIONS.
5. PROVIDE VIBRATION ISOLATION FOR ALL MECHANICAL EQUIPMENT TO PREVENT TRANSMISSION OF VIBRATION TO BUILDING STRUCTURE.
6. THE LOCATIONS OF ALL ITEMS SHOWN ON THE DRAWINGS OR CALLED FOR IN THE SPECIFICATIONS THAT ARE NOT DEFINITELY FIXED BY DIMENSIONS ARE APPROXIMATE ONLY. THE EXACT LOCATIONS NECESSARY TO SECURE THE BEST CONDITIONS AND RESULTS MUST BE DETERMINED BY THE PROJECT SITE CONDITIONS AND SHALL HAVE THE APPROVAL OF THE ENGINEER BEFORE BEING INSTALLED. DO NOT SCALE DRAWINGS.
7. ALL DUCTWORK SHALL BE RIGID TYPE UNLESS OTHERWISE NOTED ON PLANS.
8. COORDINATE ROUTING OF DUCTWORK WITH STRUCTURAL MEMBERS AND CEILING HEIGHTS.
9. REFER TO AIR DEVICE SCHEDULE FOR INDIVIDUAL RUNOUT SIZES.
10. ALL DUCTWORK SHALL BE RIGID, EXCEPT 5' FLEXIBLE CONNECTIONS TO AIR DEVICES.

**KEY NOTES:**

1. HORIZONTAL AIR HANDLING UNITS IN ATTIC SPACE WITH SUPPLY AND RETURN AIR PLENUMS. PROVIDE AUXILIARY DRAIN PAN.
2. 12" Ø OUTSIDE AIR DUCT FROM PLENUM AT GABLE VENT. COORDINATE LOCATION OF INTAKES WITH ARCHITECT. MAINTAIN 10"-0" CLEAR FROM FLUES AND VENTS. CONNECT TO RETURN DUCT WITH MANUAL VOLUME DAMPER AND SET FOR CFM AS SCHEDULED.
3. ACCESS TO ATTIC SPACE, VIA PULLDOWN STAIR, AND WALKWAY TO EACH UNIT SHALL BE PROVIDED BY OTHERS.
4. ROUTE 1" CONDENSATE FROM UNIT TO ROOF BELOW. CONCEAL PIPING AT WALL.

**THIRD LEVEL FLOOR PLAN - HVAC**  
 SCALE: 1/4"=1'



SPLIT SYSTEM HEAT PUMP HVAC UNIT																					
INDOOR UNIT													OUTDOOR UNIT								
MARK	SUPPLY CFM	O.A. CFM	FAN HP	COOLING DATA				HEATING DATA		AUXILIARY HEATING			FAN VOLTAGE	FAN MCA/MOCP	MANUFACTURER MODEL NUMBER	MARK	VOLTAGE	MCA/MOCP	SEER/EER	MANUFACTURER MODEL NUMBER	ACCESSORIES
				EATdb	EATwb	SENS. MBH	TOTAL MBH	TOTAL MBH	HSPF	VOLTAGE	AUXILIARY HEATING KW	MCA/MOCP									
F-1	2000	450	1	80	67	-	60	62	9.0	208/1/60	12.5	66 / 70	120/1/60	11 / 20	LENNOX CBX32MV-060-230-6-01	CU-1	208/1/60	29.4 / 50	14.5 / 12.5	LENNOX XP14-060-230-2	1,2,3,4,5
F-2	2000	450	1	80	67	-	60	62	9.0	208/1/60	12.5	66 / 70	120/1/60	11 / 20	LENNOX CBX32MV-060-230-6-01	CU-2	208/1/60	29.4 / 50	14.5 / 12.5	LENNOX XP14-060-230-2	1,2,3,4,5
F-3	1000	100	1/2	80	67	-	30	31.2	9.0	208/1/60	6	32 / 35	120/1/60	5 / 15	LENNOX CBX32MV-030-230-6-01	CU-3	208/1/60	18.7 / 30	14.2 / 12	LENNOX XP14-030-230-2	1,2,3,4,5
AC-1	1095	-	-	80	67	11.2	11.9	13.6	9.0	-	-	-	-	-	PANASONIC CS-E12RB4UW	AC-1	208/1/60	6.1 / 15	18.0 / -	PANASONIC CU-E12RB4U	2,3,6,7,8,9

- ACCESSORIES:
- SINGLE POINT ELECTRICAL CONNECTION (CIRCUIT BREAKER)
  - ROUTE REFRIGERANT PIPING FROM OUTDOOR UNIT TO INDOOR UNIT IN ACCORDANCE WITH MANUFACTURERS RECOMMENDATIONS
  - LOW AMBIENT CONTROLS
  - HIGH / LOW CUTOUTS
  - HAIL GUARDS
  - INDOOR GRILLE MODEL CZ-BT20U
  - WIRED CONTROLLER MODEL CZ-RD52CU
  - WIND BAFFLE
  - SINGLE POINT ELECTRICAL CONNECTION AT OUTDOOR UNIT.



**Project Information**

Energy Code: 2012 IECC  
 Project Title: JACKSON COUNTY HISTORIC COURTHOUSE  
 Location: Jefferson (Jackson), Georgia  
 Climate Zone: 3a  
 Project Type: New Construction

Construction Site: 85 WASHINGTON STREET, JEFFERSON, GA 30549  
 Owner/Agent: \_\_\_\_\_  
 Designer/Contractor: \_\_\_\_\_

**Additional Efficiency Package**  
 Unspecified

- Mechanical Systems List**
- Quantity System Type & Description**
- HVAC System 1 (Single Zone):  
 Split System Heat Pump  
 Heating Mode: Capacity = 169 kBtu/h,  
 Proposed Efficiency = 3.90 COP, Required Efficiency = 3.20 COP  
 Cooling Mode: Capacity = 162 kBtu/h, Air Economizer  
 Proposed Efficiency = 12.50 EER, Required Efficiency: 10.60 EER + 10.7 IEER  
 Fan System: None
  - Water Heater 1:  
 Electric Instantaneous Water Heater, Capacity: 0 gallons  
 No minimum efficiency requirement applies

**Mechanical Compliance Statement**

Compliance Statement: The proposed mechanical design represented in this document is consistent with the building plans, specifications, and other calculations submitted with this permit application. The proposed mechanical systems have been designed to meet the 2012 IECC requirements in COMcheck Version 4.0.7.2 Review and to comply with any applicable mandatory requirements listed in the Inspection Checklist.

DAVID BRANHAM, PE  
 Name - Title \_\_\_\_\_ Signature \_\_\_\_\_ Date 03/06/2018

FAN SCHEDULE												
MARK	CFM	SPWC, INCHES	RPM	SONES	ELECTRICAL			SERVICE	ACCESSORIES	GREENHECK MODEL	INTERLOCK	NOTES
					HP	VOLTAGE	STARTER/DISCONNECT					
EF-1	100	0.25"	900	1.0	1/6	115/1/60	MAN	EF	1,2,3	SP-B80	NONE	FAN TO RUN CONTINUOUS
EF-2	100	0.25"	900	1.0	1/6	115/1/60	MAN	EF	1,2,3	SP-B80	NONE	FAN TO RUN CONTINUOUS
EF-3	100	0.25"	900	1.0	1/6	115/1/60	MAN	EF	1,2,3	SP-B80	NONE	FAN TO RUN CONTINUOUS
EF-4	100	0.25"	900	1.0	1/6	115/1/60	MAN	EF	1,2,3	SP-B80	NONE	FAN TO RUN CONTINUOUS

- SERVICE:**  
 EF - GENERAL EXHAUST
- ACCESSORIES:**  
 1. CEILING RADIATION DAMPER  
 2. GRAVITY BACKDRAFT DAMPER  
 3. BIRDSCREEN

SUPPLY AIR DEVICES							
MARK	NECK SIZE	CFM RANGE	MAX TOTAL ΔP	MAX NC	TITUS MODEL NO.		
					SERIES	ACCESSORIES	REMARKS
S1	10x4	UP TO 85	0.08"	30	300	Ⓢ	ALUMINUM DOUBLE DEFLECTION SUPPLY GRILLE
	10x6	86-125	0.08"	30	300		
	14x6	126-200	0.08"	30	300		
	14x8	201-250	0.08"	30	300		
S2	SEE PLANS	UP TO 350	0.08"	30	ML-38		ALUMINUM MODULAR SLOT SUPPLY DIFFUSER, 3/4" SLOT, 48" LONG, AND INSULATED PLENUM

RETURN DEVICES							
MARK	NECK SIZE	CFM RANGE	MAX TOTAL ΔP	MAX NC	TITUS MODEL NO.		
					SERIES	ACCESSORIES	REMARKS
R1	10x6	UP TO 125	0.08"	30	350	Ⓢ	ALUMINUM RETURN GRILLE
	14x6	126 - 200	0.08"	30	350		
	14x8	201 - 300	0.08"	30	350		
	14x10	301 - 400	0.08"	30	350		
R2	30x16	UP TO 2000	0.08"	30	350FS		ALUMINUM RETURN GRILLE, 3/4" SPACING, 35 DEGREE DEFLECTION

X - SERVICE AND MARK NUMBER - S = SUPPLY ACCESSORIES:  
 XXX - CFM (ON PLANS) - R = RETURN Ⓢ OBD

**NOTES:**

- CEILING DEVICES FURNISHED SHALL BE COMPATIBLE WITH CEILINGS SPECIFIED BY ARCHITECT.
- UNLESS OTHERWISE NOTED, PROVIDE SOUND ATTENUATING FLEX DUCT AT CONNECTION.
- PROVIDE SUPPLY AIR CEILING DEVICES WITH 4-WAY THROW PATTERN, UNLESS OTHERWISE INDICATED.

SUPPLY RUNOUT SIZES (U.N.O.)		RETURN RUNOUT SIZES (U.N.O.)	
CFM RANGES	DUCT SIZE	CFM RANGES	DUCT SIZE
0-100	6"	0-75	6" or 6/6
101-130	7"	76-140	7" or 8/6
131-200	8"	141-190	8" or 8/8
201-260	9"	191-250	9" or 10/8
261-400	10"	251-320	10" or 10/10
401-500	11"	321-420	11" or 12/10

\* RUNOUT SIZES TO BE USED ONLY IF NOT NOTED ON PLANS.

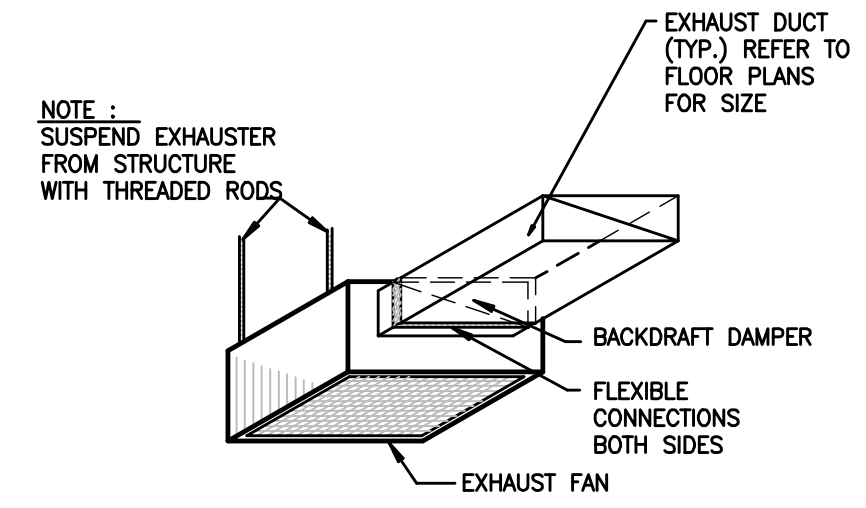
LEGEND	
SYMBOL	DESCRIPTION
F	AIR HANDLING UNIT
AFF	ABOVE FINISHED FLOOR
BFC	BELOW FINISHED CEILING
CO	CLEAN OUT
CU	HEAT PUMP CONDENSING UNIT
EF	EXHAUST FAN
OA	OUTSIDE AIR
RA	RETURN AIR
SA	SUPPLY AIR
—	SUPPLY DUCTWORK
—	RETURN DUCTWORK
—	EXHAUST DUCTWORK
⊠	SUPPLY REGISTER, SEE AIR DEVICE SCHEDULE
⊠	LINEAR SLOT DIFFUSER, SEE AIR DEVICE SCHEDULE
⊠	SUPPLY REGISTER, SEE AIR DEVICE SCHEDULE
⊠	EXHAUST AIR
⊠	ROUND DUCTWORK UP
⊠	AIR DEVICE #1 CFM AIR QUANTITY } SEE AIR DISTRIBUTION SCHEDULE
⊠	MANUAL VOLUME BALANCING DAMPER
—	CONDENSATE DRAIN

ARCHITECTURAL

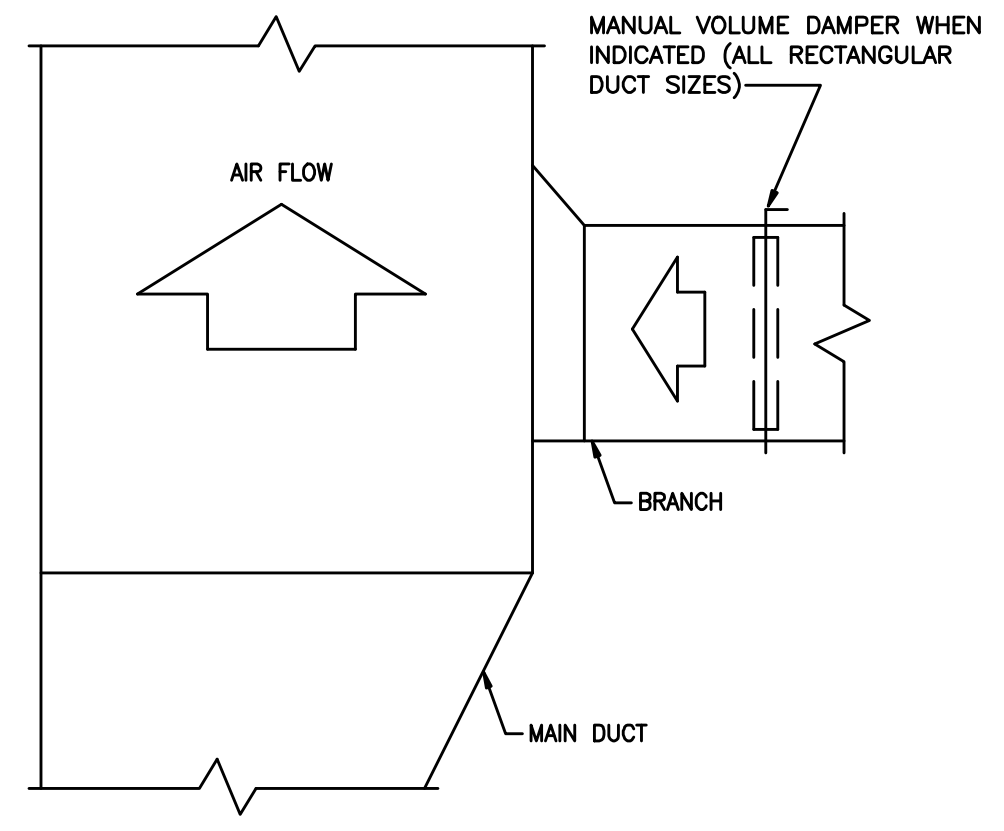
JACKSON COUNTY HISTORIC COURTHOUSE  
 85 WASHINGTON STREET  
 JEFFERSON, GEORGIA 30549  
**BARKER, CUNNINGHAM, BARRINGTON, P.C.**  
 1780 SAWYER OAKS LANE, CUMMING, GA 30040  
 678-341-9178

NO.  
 DATE: 8/28/2018  
 REV.  
 SHEET

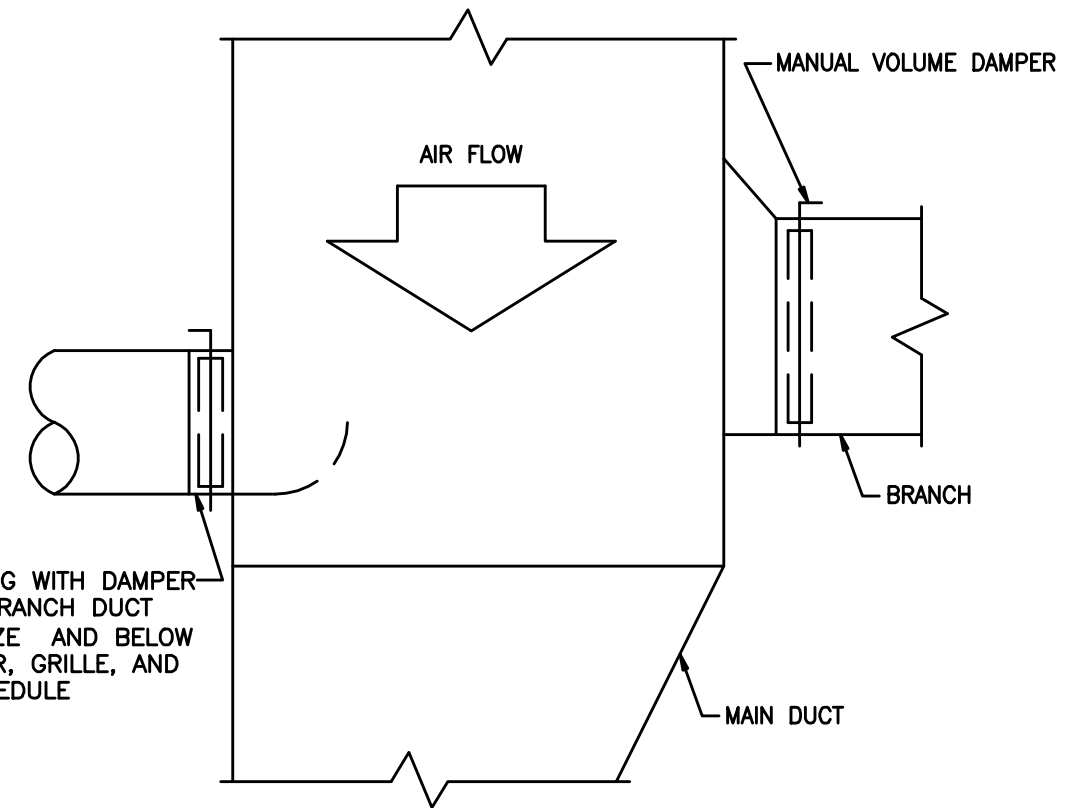
M4  
 OF .



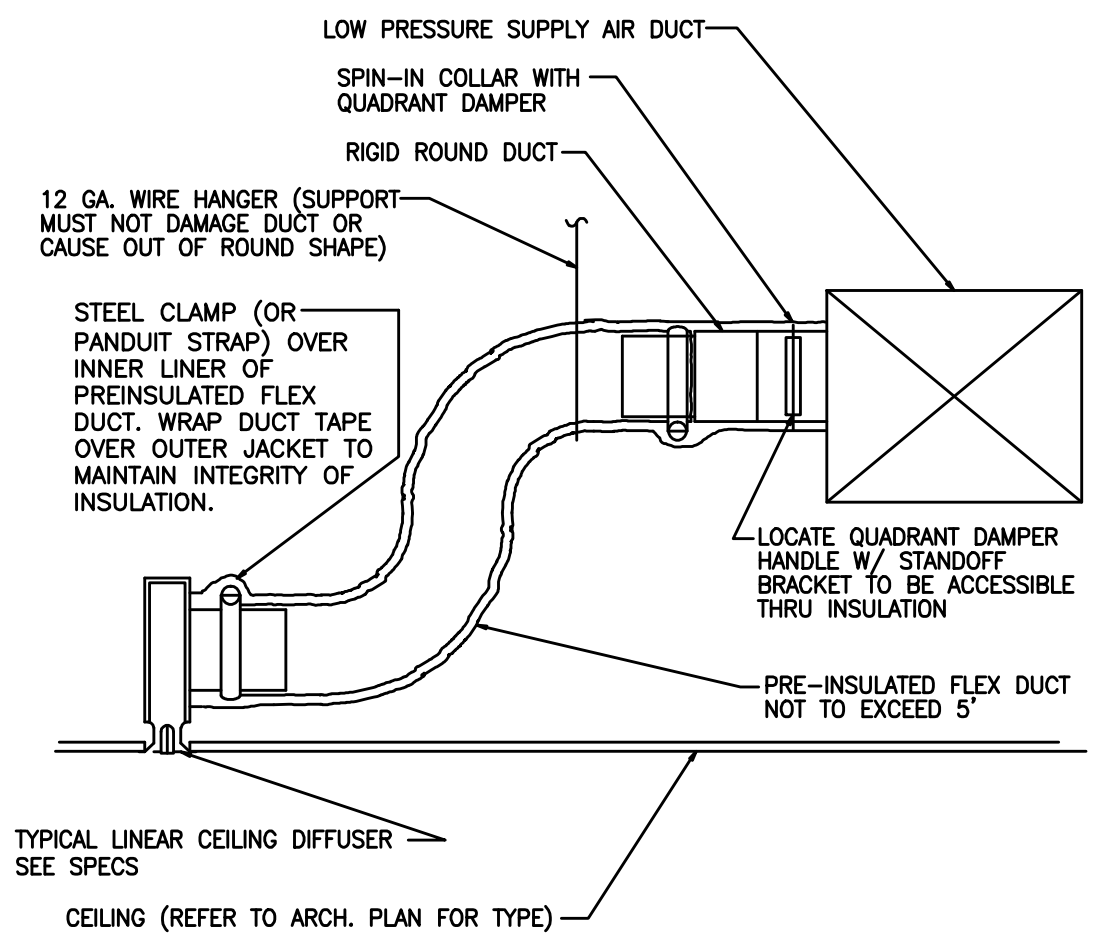
**CEILING EXHAUSTER DETAIL**



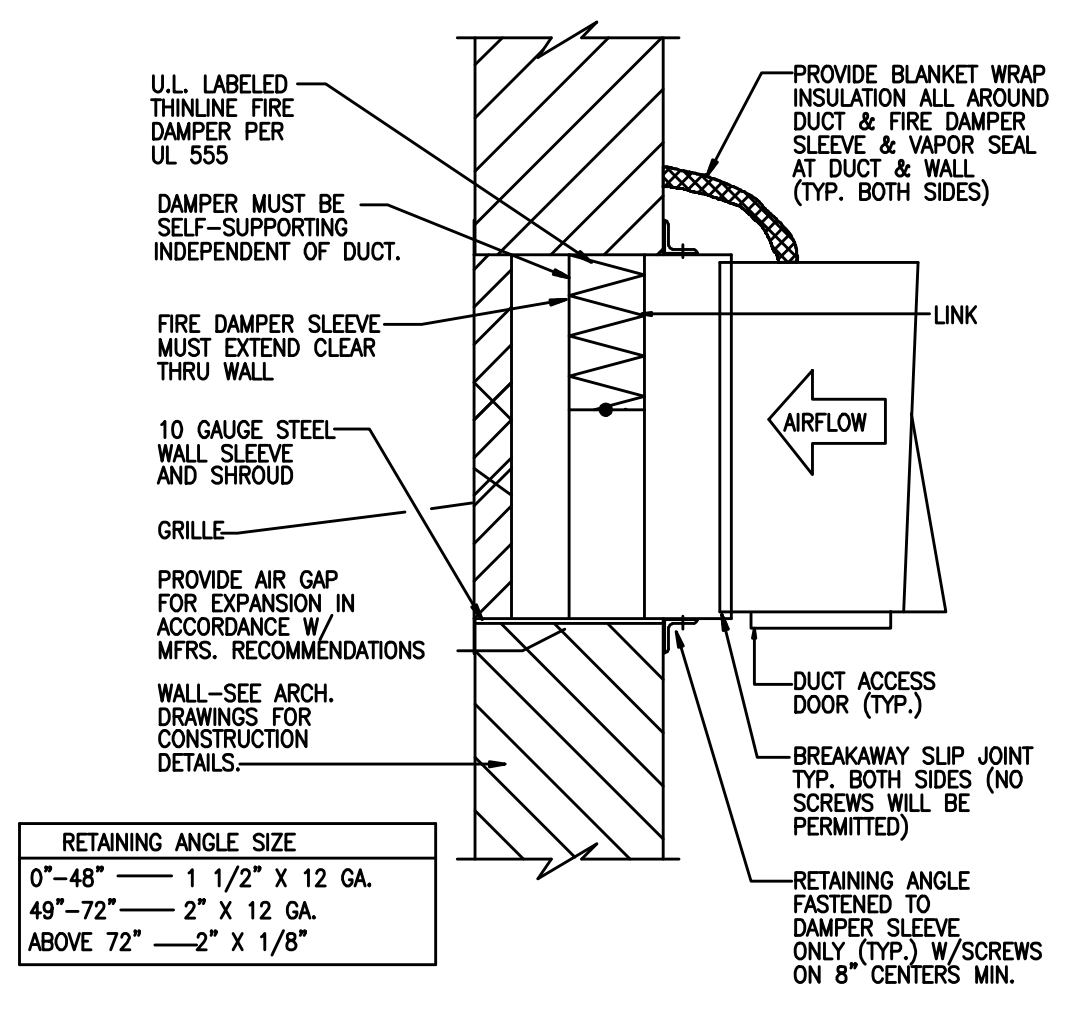
**RETURN AIR DUCT BRANCH DETAIL**



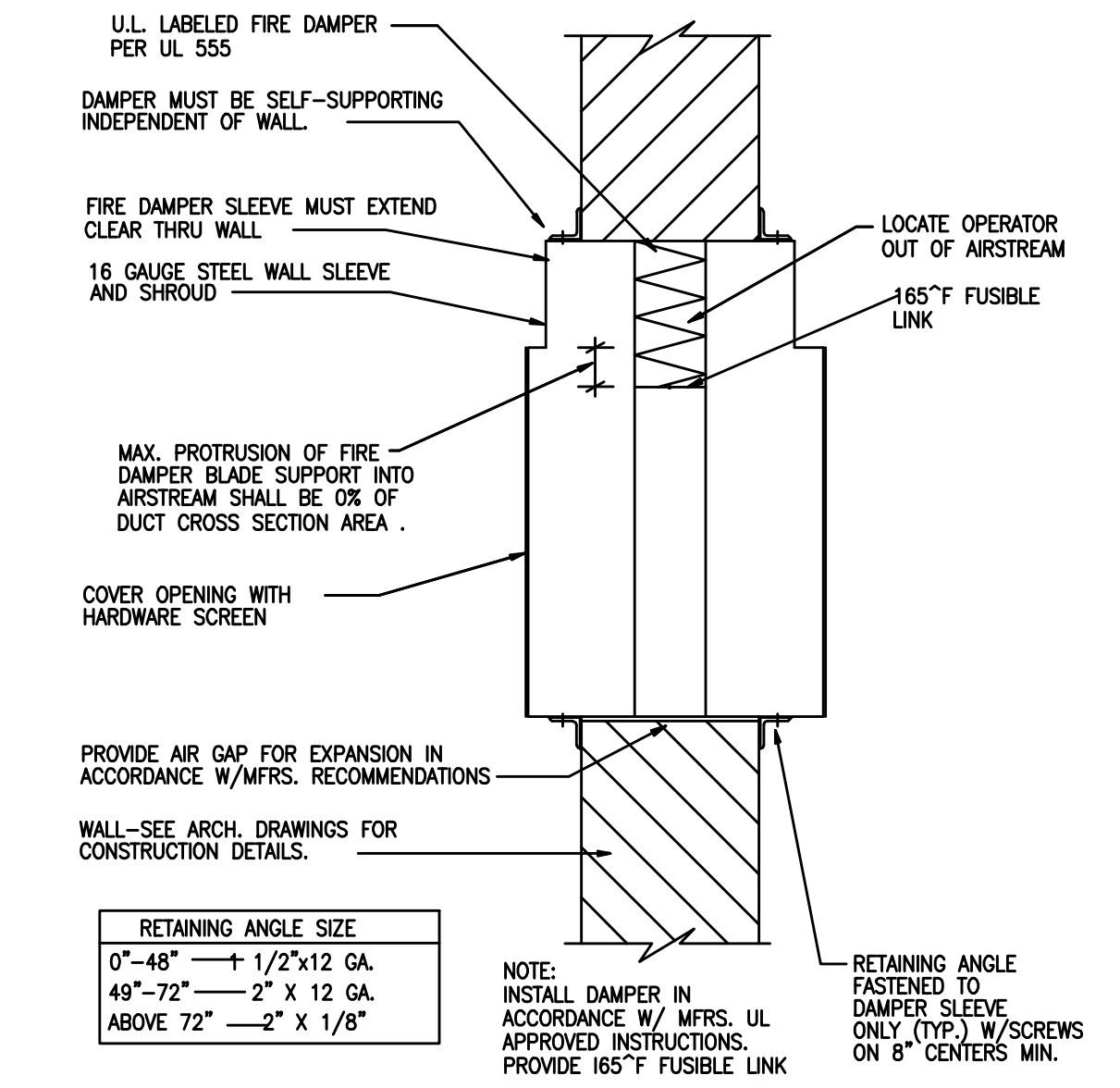
**SUPPLY AIR DUCT BRANCH DETAIL**



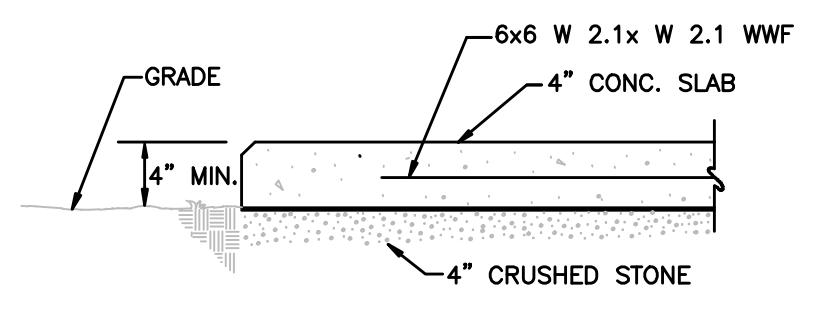
**LINEAR SLOT DIFFUSER DETAIL**



**GRILLE WITH THINLINE DAMPER**



**FIRE DAMPER DETAIL**



**CONCRETE PAD DETAIL**

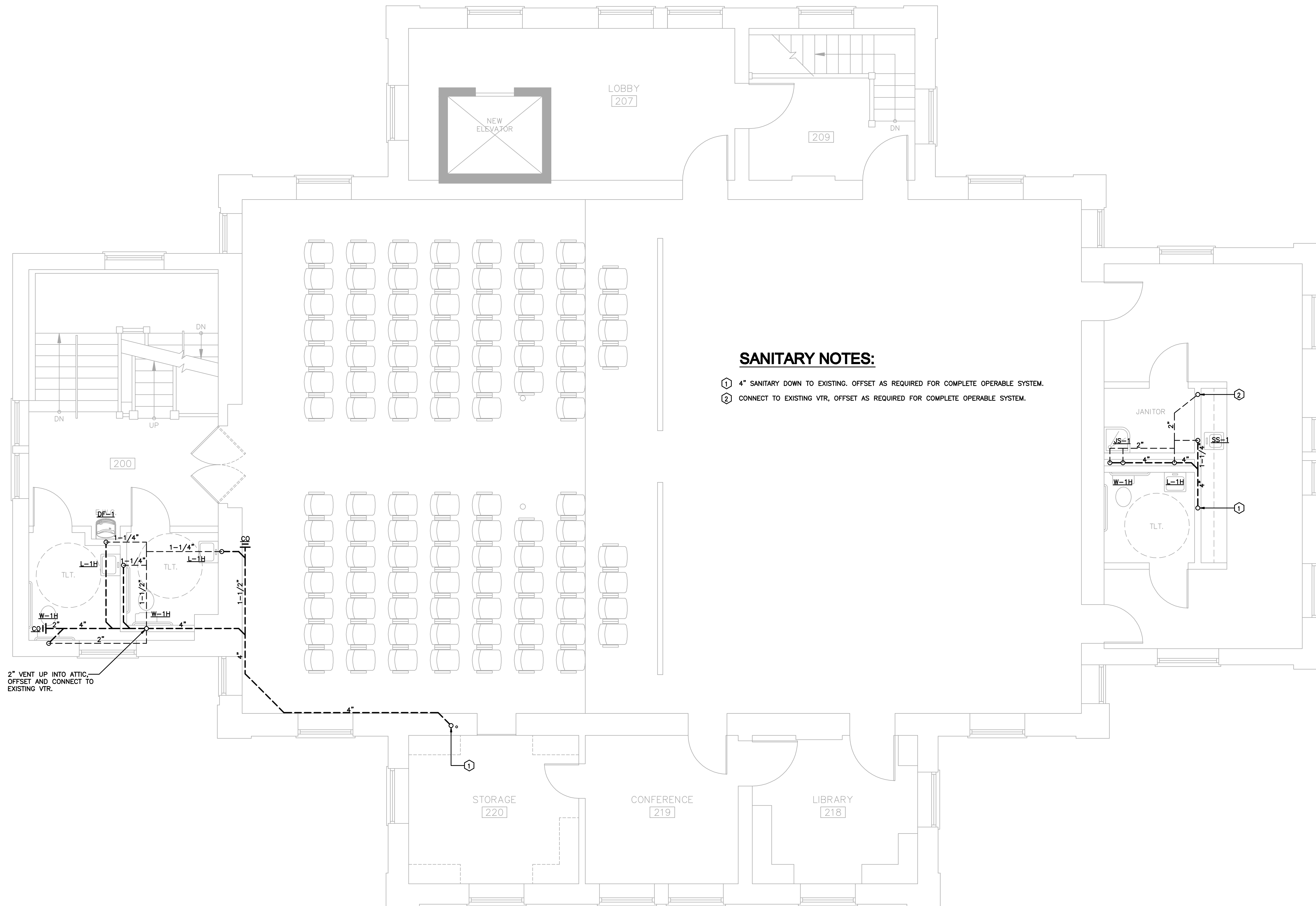
NOTE: FINAL OVERALL DIMENSIONS SHALL BE DETERMINED BY CLEARANCES AND SIZES OF EQUIPMENT, AS APPROVED BY THE CONTRACTOR OFFICER

ARCHITECTURAL

JACKSON COUNTY HISTORIC COURTHOUSE  
 85 WASHINGTON STREET  
 JEFFERSON, GEORGIA 30549  
**BARKER, CUNNINGHAM, BARRINGTON, P.C.**  
 1780 SAWYER OAKS LANE, CUMMING, GA 30040  
 678-341-9178

NO.  
 DATE: 8/28/2018  
 REV:

SHEET  
**M5**  
 OF .



**SANITARY NOTES:**

- ① 4" SANITARY DOWN TO EXISTING. OFFSET AS REQUIRED FOR COMPLETE OPERABLE SYSTEM.
- ② CONNECT TO EXISTING VTR, OFFSET AS REQUIRED FOR COMPLETE OPERABLE SYSTEM.

2" VENT UP INTO ATTIC,  
 OFFSET AND CONNECT TO  
 EXISTING VTR.

**SECOND LEVEL FLOOR PLAN - SANITARY**

SCALE: 1/4"=1'

RELEASED FOR CONSTRUCTION

ARCHITECTURAL

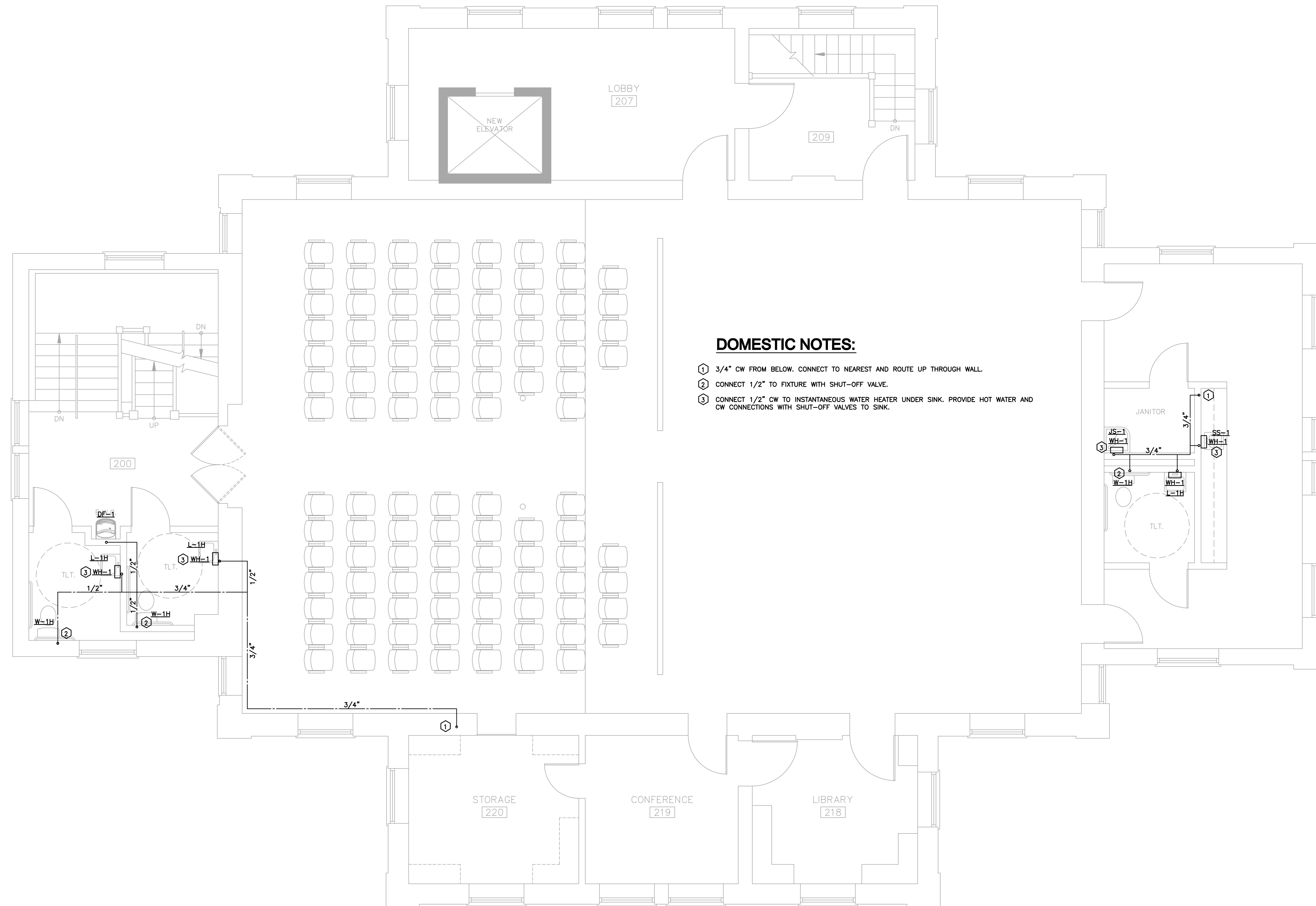
JACKSON COUNTY HISTORIC COURTHOUSE  
 85 WASHINGTON STREET  
 JEFFERSON, GEORGIA 30549  
**BARKER, CUNNINGHAM, BARRINGTON, P.C.**  
 1780 SAWYER OAKS LANE, CUMMING, GA 30040  
 678-341-9178

NO.  
 DATE: 8/28/2018  
 REV:

SHEET

P1

OF .



**DOMESTIC NOTES:**

- ① 3/4" CW FROM BELOW. CONNECT TO NEAREST AND ROUTE UP THROUGH WALL.
- ② CONNECT 1/2" TO FIXTURE WITH SHUT-OFF VALVE.
- ③ CONNECT 1/2" CW TO INSTANTANEOUS WATER HEATER UNDER SINK. PROVIDE HOT WATER AND CW CONNECTIONS WITH SHUT-OFF VALVES TO SINK.

**SECOND LEVEL FLOOR PLAN - DOMESTIC**

SCALE: 1/4"=1'

RELEASED FOR CONSTRUCTION

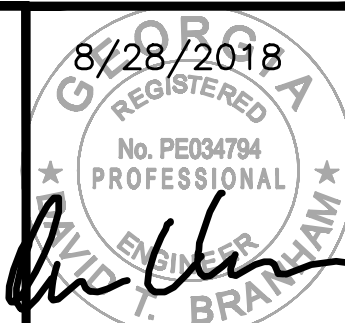
ARCHITECTURAL

JACKSON COUNTY HISTORIC COURTHOUSE  
 85 WASHINGTON STREET  
 JEFFERSON, GEORGIA 30549  
**BARKER, CUNNINGHAM, BARRINGTON, P.C.**  
 1780 SAWYER OAKS LANE, CUMMING, GA 30040  
 678-341-9178

NO.  
 DATE: 8/28/2018  
 REV.

SHEET  
**P2**  
 OF .





WATER HEATER SCHEDULE		
SYMBOL	FIXTURE	DESCRIPTION
WH-1	HOT WATER HEATER 120"	WATER HEATER (INSTANTANEOUS): EEMAX TANKLESS WATER HEATERS, MODEL EMT1, 1.4 KW, 120-1-60. PROVIDE AND INSTALL T & P RELIEF VALVE, AND 120V CORD.

PLUMBING LEGEND	
SYMBOL	DESCRIPTION
-----	SANITARY WASTE
-----	SANITARY VENT
-----	COLD WATER (CW)
-----	COLD WATER (CW) BELOW GRADE
-----	115° HOT WATER (HW)
-----	GATE VALVE
-----	BALL VALVE
-----	UNION
-----	CHECK VALVE
-----	PRV: PRESSURE REDUCING VALVE
-----	PIPE ANCHOR
-----	EXPANSION JOINT
-----	FLOW SWITCH
-----	PLUGGED TEE
-----	WATER HAMMER ARRESTOR
-----	PRESSURE GAUGE
-----	FIRE HOSE CABINET
R.D.	ROOF DRAIN
O.D.	OVER-FLOW DRAIN
F.D.	FLOOR DRAIN
F.S.	FLOOR SINK
C.O.	CLEAN OUT
F.C.O.	FLOOR CLEANOUT
G.C.O.	GRADE CLEANOUT
W.C.O.	WALL CLEANOUT
V.T.R.	VENT THRU ROOF
IVTR	INDIRECT VENT THRU ROOF
HB	HOSE BIBB
WH	WALL HYDRANT
NFWH	NON-FREEZE WALL HYDRANT
NFYH	NON-FREEZE YARD HYDRANT
DF-1	PLUMBING FIXTURE
①	INDICATES RISER NUMBER
R.P.B.P.	REDUCED PRESSURE BACKFLOW PREVENTER
OSCI	OWNER SUPPLIED, CONTRACTOR INSTALLED

PLUMBING FIXTURE SCHEDULE							
SYMBOL	FIXTURE	DESCRIPTION	SOIL	WASTE	VENT	HW	CW
W-1H	WATER CLOSET	KOHLER K-4302 FLOOR MOUNTED FLUSH VALVE, SIPHON JET W/ 16-1/2" HIGH BOWL. (128 GAL PER FLUSH) WITH SLOAN "ROYAL" 115-1.6YK FLUSH VALVE AND K-4670-C OPEN FRONT WHITE SEAT.	4"	-	2"	-	1"
L-1	LAVATORY	KOHLER K-2032 (20-3/4"x18-1/4") VITREOUS CHINA WALL MOUNTED LAVATORY WITH 4" FAUCET CENTERS, DELTA MODEL 501WFHDF SINGLE HANDLE FAUCET WITH McGUIRE 155A GRID STRAINER W/ TAILPIECE, KOHLER K-B998 1 1/4" P-TRAP AND K-7605-P 3/8" SUPPLIES WITH STOPS (PROVIDE CONCEALED ARM CARRIER EQUAL TO WADE).	-	1-1/4"	1-1/2"	1/2"	1/2"
SS-1	SINK	ELKAY MODEL LR1517 SINGLE COMPARTMENT STAINLESS STEEL SINK WITH LK18 FLAT GRID STRANER WITH 4" LONG TAILPIECE, DELTA MODEL 24T2643 SINGLE HANDLE FAUCET WITH RIGID GOOSENECK SPOUT, KOHLER K-9000 1-1/2" P-TRAP, B890-012C LK 1/2" SUPPLY WITH STOP.	-	1-1/2"	1-1/2"	1/2"	1/2"
JS-1	MOP SINK	FIAT MODEL MSB-2424 (24"x24"x10") MOLDED STONE BASIN WITH MODEL 1453-BB STRAINER, MODEL 830-AA FAUCET WITH VACUUM BREAKER, MODEL 832-AA HOSE AND BRACKET AND MODEL 889-CC MOP HANGER. MODEL MSG 2424 WALL GUARD AND E-77-AA VINYL BUMPER GUARD.	-	3"	2"	1/2"	1/2"
DF-1	DRINKING FOUNTAIN	SUNROG MODEL AD4D8-BL WALL MOUNTED BARRIER-FREE SPLIT-LEVEL WATER COOLER (120-1-60) WITH WATTS 518-173 BN 1-1/4" P-TRAP AND KOHLER K-7605 3/8" SUPPLY. PROVIDE CARRIER EQUAL TO WADE.	-	2"	2"	-	1/2"

1. WATER CLOSETS SHALL BE PROVIDED WITH A MAXIMUM FLUSHING RATE PER CODE IF MORE RESTRICTED THAN FIXTURE SPECIFIED.
2. PROVIDE SET SCREWS ON ALL ESCUTCHEONS.
3. PROVIDE 3 GPM MAX. FLOW CONTROLS ON ALL SINK FAUCETS AND .5 GPM MAX. FLOW CONTROLS ON ALL LAVATORY FAUCETS.
4. INSULATE ALL TRAPS, CW AND HW SUPPLIES ON HANDICAPPED LAVATORIES AND SINKS WITH TRUEBRO. INC., MODEL #102W & #105W. (UNLESS NOTED OTHERWISE.)
5. MOUNT ALL HANDICAPPED FIXTURES AT HEIGHT AS PER ADA REQUIREMENTS.
6. ALL FIXTURES ARE WHITE OR STAINLESS STEEL UNLESS NOTED OTHERWISE.
7. MOUNT ALL PUBLIC FLUSH VALVES AT A HEIGHT OF 42 INCHES, UNLESS OTHERWISE NOTED.
8. REFER TO ARCH. PLAN FOR EXACT LOCATION AND MOUNTING HEIGHT OF ALL FIXTURES.
9. PROPERLY ADJUST ALL AUTOMATIC FAUCETS TO PROVIDE WARM WATER.
10. COORDINATE FINISHES/MATERIALS WITH ARCHITECT.

**GENERAL PLUMBING NOTES**

1. ANY CONTRACTOR WHO DESIRES TO INSTALL, ENLARGE, ALTER, REPAIR, MOVE OR REPLACE A PLUMBING SYSTEM, THE INSTALLATION OF WHICH IS REGULATED BY THIS CODE, SHALL FIRST MAKE APPLICATION AND OBTAIN THE REQUIRED PERMIT FOR THE WORK AS PER SECTION #106.0 IPC.
2. ALL FLOOR SINKS AND HUB DRAINS SHALL BE INSTALLED WITH RIMS 1/2" TO 3/4" ABOVE FINISHED FLOOR AS PER #802.3.2 IPC.
3. CONTRACTOR SHALL CONNECT NEW FLOOR DRAINS AND FLOOR SINKS DIRECTLY TO EXISTING SANITARY SYSTEM WITHOUT NEED OF VENTING PER #912 IPC.
4. THESE DRAWINGS ARE DIAGRAMMATIC AND SHOW GENERAL PLUMBING LAYOUTS AND PIPE ROUTING FOR BIDDING PURPOSES ONLY. IT IS THE RESPONSIBILITY OF THE CONTRACTOR TO PREPARE DETAILED SHOP DRAWINGS AND TO CONFIRM SPACE ALLOCATIONS.
5. SEE ARCHITECTURAL AND STRUCTURAL DRAWINGS FOR ALL BUILDING DIMENSIONS, DETAILS, ELEVATIONS AND EXACT LOCATIONS OF FIXTURES.
6. CONTRACTOR SHALL VERIFY ALL FLOW LINES PRIOR TO ROUGHING IN.
7. ALL WORK SHALL CONFORM TO APPLICABLE INTERNATIONAL AND STATE PLUMBING CODES, LOCAL BUILDING CODES AND STATE HEALTH REGULATIONS HAVING JURISDICTION.
8. PLUMBING CONTRACTOR SHALL REVIEW ARCHITECTURAL, STRUCTURAL, ELECTRICAL, SPRINKLER AND MECHANICAL DRAWINGS AND COORDINATE HIS WORK WITH ALL OTHER TRADES FOR PIPE ROUTING AND EQUIPMENT PLACEMENT. AVOID INTERFERENCE WITH ARCHITECTURAL FEATURES, BEAMS, FOOTINGS, WINDOWS, ETC. NOTIFY ARCHITECT OF ANY CONFLICTS.
9. CONTRACTOR MAY RE-LAYOUT TO HIS ADVANTAGE CODE EQUIVALENT PLUMBING SO AS TO REDUCE INSTALLATION COSTS, OR TO RE-ROUTE TO AVOID CONFLICTS WITH OTHER TRADES AFTER FIRST HAVING RECEIVED THE APPROVAL OF THE ARCHITECT / ENGINEER.
10. PLUMBING CONTRACTOR SHALL COORDINATE WITH ELECTRICAL CONTRACTOR ALL VOLTAGES, ELECTRICAL LOADS, ETC. OF ELECTRICALLY OPERATED EQUIPMENT PRIOR TO ORDERING. ALL EQUIPMENT SHALL BE U.L. AND N.E.M.A. LISTED.
11. PLUMBING CONTRACTOR SHALL FURNISH ACCESS PANELS TO BE INSTALLED BY GENERAL CONTRACTOR AS REQUIRED FOR PLUMBING INSTALLATIONS.
12. ALL VALVES AND SHOKSTOPS SHALL BE ACCESSIBLE.
13. SLEEVES SHALL BE INSTALLED WHERE PIPING PASSES THROUGH STRUCTURE.
14. ALL OPENINGS THROUGH RATED WALLS SHALL BE SEALED WITH AN APPROVED FIREPROOFING TO MAINTAIN THE INTEGRITY OF THE WALL.
15. PROVIDE MANUFACTURED COMPATIBLE PIPE HANGERS, RODS AND INSERTS, OR CLAMPS FOR THE PROPER SUPPORT OF ALL PIPING. NO BAND IRON, TIE WIRE, METAL STRAPPING OR WIRE STRAPPING WILL BE PERMITTED.
16. PROVIDE SUITABLE BACKING AND SUPPORT FOR ALL PLUMBING FIXTURES.
17. OFFSET ALL V.T.R.'S AS REQUIRED WHETHER OR NOT SHOWN ON DRAWINGS.
18. ALL V.T.R.'S SHALL BE A MINIMUM OF 10 FT. AND/OR AS REQUIRED BY CODE AWAY FROM A/C INTAKES WHETHER OR NOT SHOWN ON PLANS.
19. ALL PIPING SHALL BE LABELED.
20. UPON COMPLETION OF THE WORK COVERED BY THIS CONTRACT, FURNISH THE OWNER WITH ONE (1) SET OF REPRODUCIBLE RECORD DOCUMENTS WHICH SHOW ALL PLUMBING INSTALLED UNDER THIS CONTRACT.
21. ALL PIPING SUBJECT TO FREEZING SHALL BE WRAPPED WITH HEAT TAPE EQUAL TO RAYCHEM "XL TRACE" AND SHALL BE INSULATED.
22. ALL WATER PIPING SHALL BE SLOPED TO LOW POINTS AND PROVIDED WITH DRAINS SO THAT ENTIRE SYSTEM MAY BE DRAINED. ALL DRAINS SHALL BE ACCESSIBLE.
23. PROVIDE ALL V.T.R.'S WITH 4 LB. HIGH BOOT LEAD FLASHING.
24. ALL WATER PIPING INSTALLED BELOW SLAB SHALL BE TYPE "K" COPPER. 2" OR SMALLER SHALL BE LOOPED (NO JOINTS). LARGER THAN 2" SHALL HAVE SILFOS BRAZED JOINTS.
25. DO NOT RUN ANY WATER PIPING ABOVE ELECTRICAL PANELS (COORDINATE WITH ELECTRICAL CONTRACTOR).
26. CONTRACTOR SHALL NOT INSTALL ANY DEAD ENDS IN WATER PIPING. WATER HAMMER ARRESTORS AND VALVED WATER CONNECTIONS FOR FUTURE SHALL BE INSTALLED AS CLOSE AS POSSIBLE TO TEE CONNECTION. WATER HAMMER ARRESTORS SHALL BE INSTALLED ABOVE CEILING FOR ACCESS PURPOSES.
27. CONTRACTOR SHALL PARTICIPATE IN AN ABOVE CEILING COORDINATION MEETING FOR ALL TRADES AS ARRANGED BY THE GENERAL CONTRACTOR.

ARCHITECTURAL

JACKSON COUNTY HISTORIC COURTHOUSE  
 85 WASHINGTON STREET  
 JEFFERSON, GEORGIA 30549  
**BARKER, CUNNINGHAM, BARRINGTON, P.C.**  
 1780 SAWNEE OAKS LANE, CUMMING, GA 30040  
 678-341-9178

NO.  
 DATE: 8/28/2018  
 REV:

SHEET  
**P3**  
 OF .