

Renovations to St. James Middle School

9775 St. James Road
Myrtle Beach, SC

TAX MAP No: 190-0003-053

Architect: D3G Architects LLC

Drawing List:

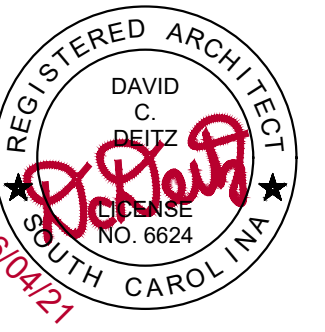
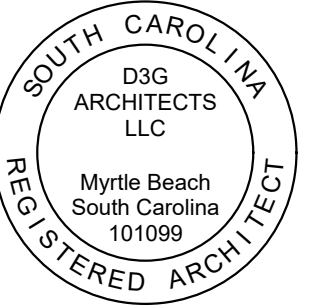
A0.00	COVER
A1.01	MASTER EXISTING FLOOR PLAN
A1.02	ENLARGED AREAS
A2.01	WALL SECTIONS
A3.01	DOOR TYPES, DOOR DETAILS
A4.01	RCP DETAILS

June 4, 2021



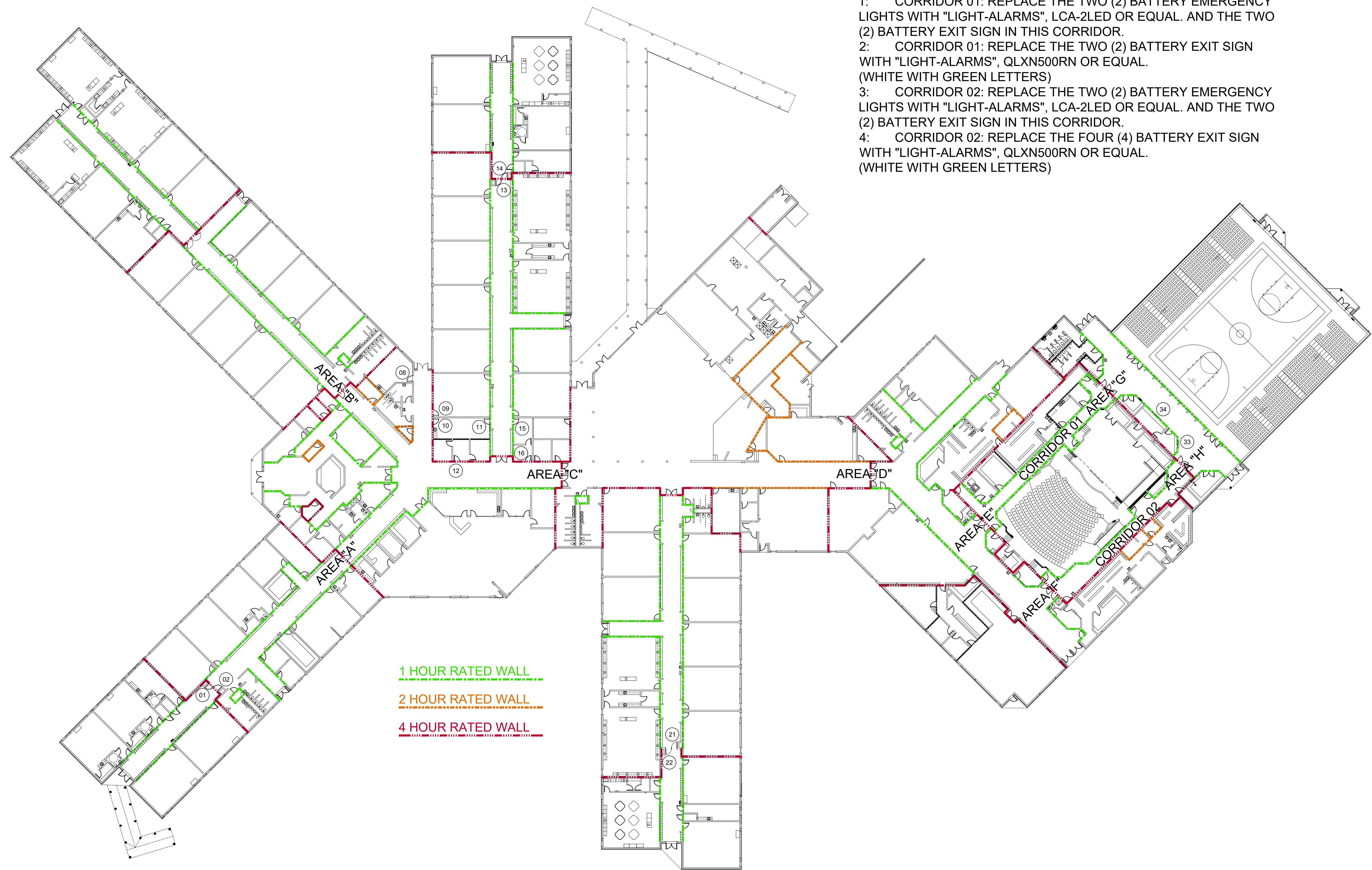
D3G ARCHITECTS, LLC
WWW.D3GA.NET
843.427.4450
350 HILTON ROAD / SUITE 101
MYRTLE BEACH, SC 29572

THIS DRAWING & DESIGN IS
THE PROPERTY OF
D3G ARCHITECTS, LLC
REPRODUCTION OR REUSE IN
WHOLE OR IN PART WITHOUT
WRITTEN PERMISSION IS
FORBIDDEN



NOTE:

- 1: CORRIDOR 01: REPLACE THE TWO (2) BATTERY EMERGENCY LIGHTS WITH "LIGHT-ALARMS", LCA-2LED OR EQUAL. AND THE TWO (2) BATTERY EXIT SIGN IN THIS CORRIDOR.
- 2: CORRIDOR 01: REPLACE THE TWO (2) BATTERY EXIT SIGN WITH "LIGHT-ALARMS", QLXN500RN OR EQUAL. (WHITE WITH GREEN LETTERS)
- 3: CORRIDOR 02: REPLACE THE TWO (2) BATTERY EMERGENCY LIGHTS WITH "LIGHT-ALARMS", LCA-2LED OR EQUAL. AND THE TWO (2) BATTERY EXIT SIGN IN THIS CORRIDOR.
- 4: CORRIDOR 02: REPLACE THE FOUR (4) BATTERY EXIT SIGN WITH "LIGHT-ALARMS", QLXN500RN OR EQUAL. (WHITE WITH GREEN LETTERS)



1 MASTER FLOOR PLAN
 A1.01 SCALE: 1" = 30'-0"

PROJECT TITLE:
Renovations to St. James Middle School

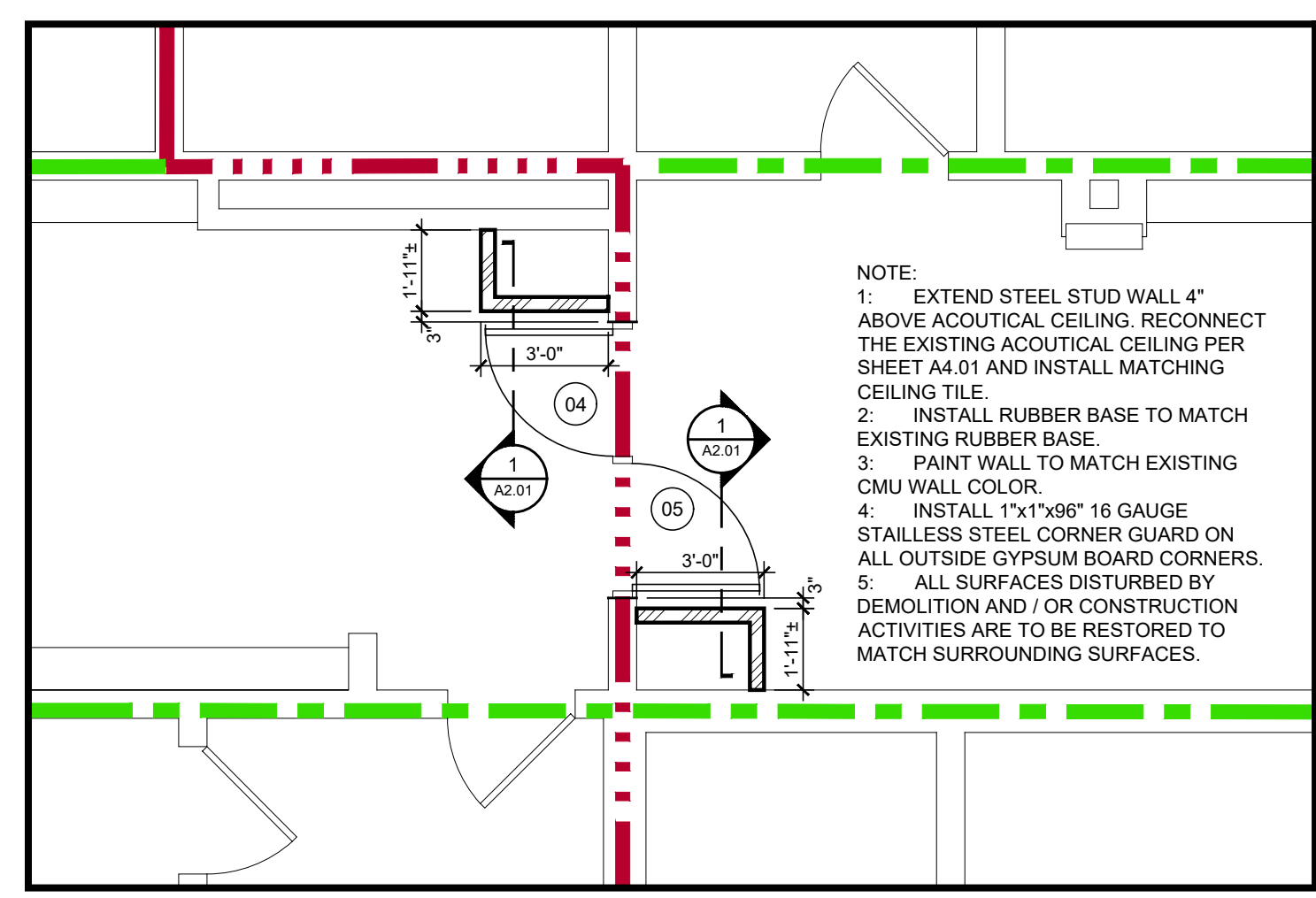
TMS: 190-0003-053
 9775 St. James Road
 Myrtle Beach, SC

FILE NUMBER: 2123

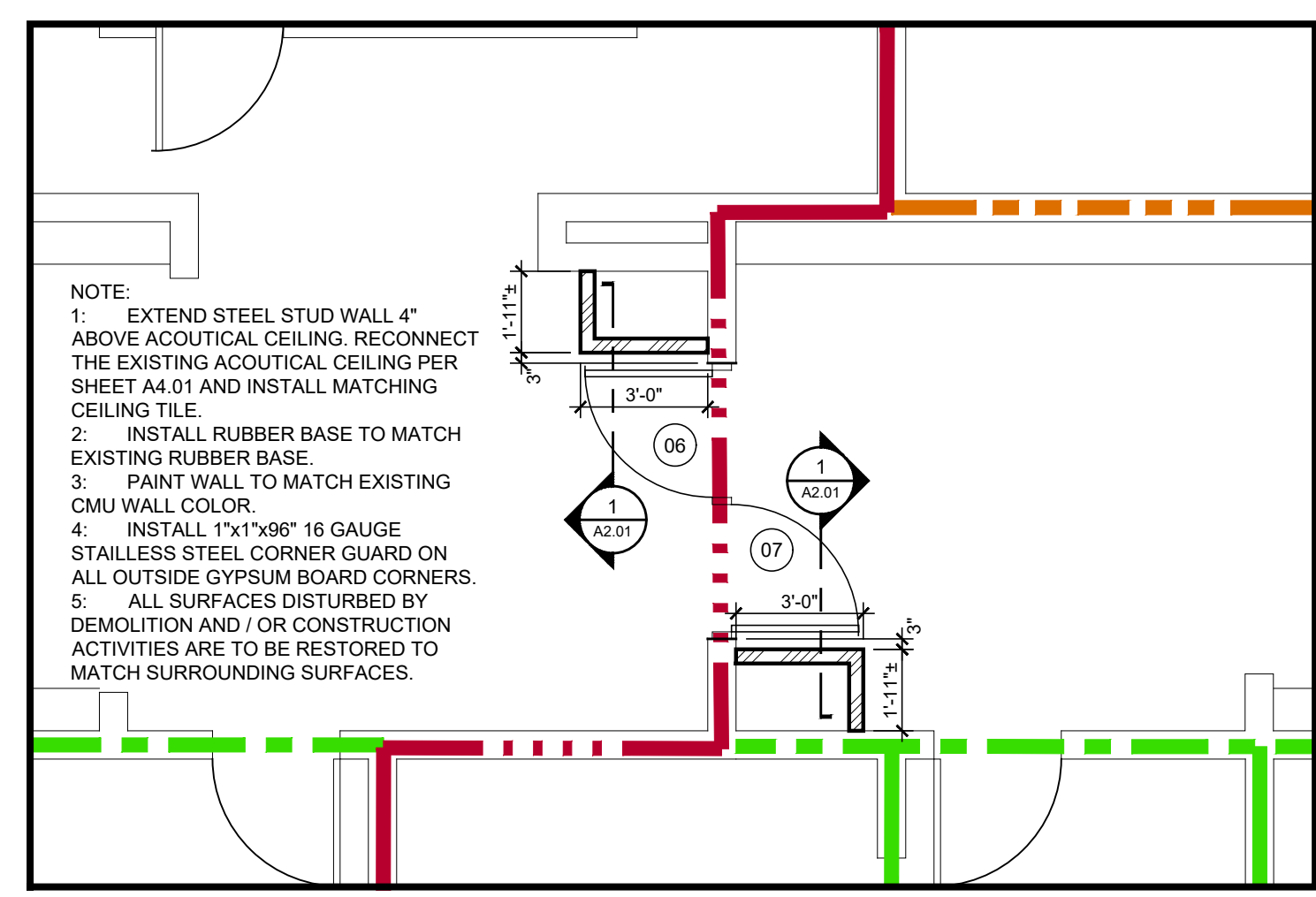
SHEET TITLE: MASTER FLOOR PLAN

DATE: June 4, 2021
 REVISION DATE:

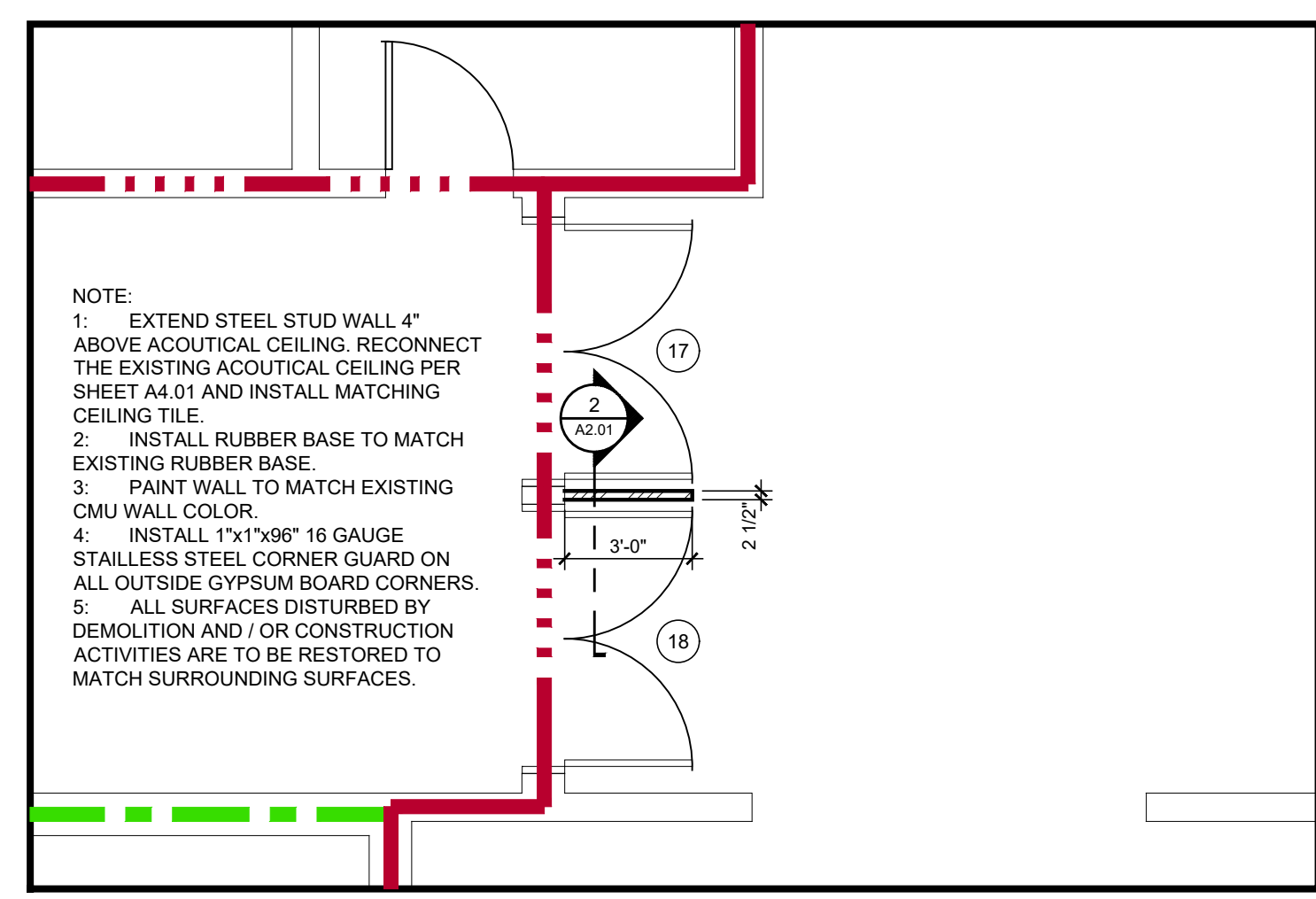
SHEET NUMBER:
A1.01



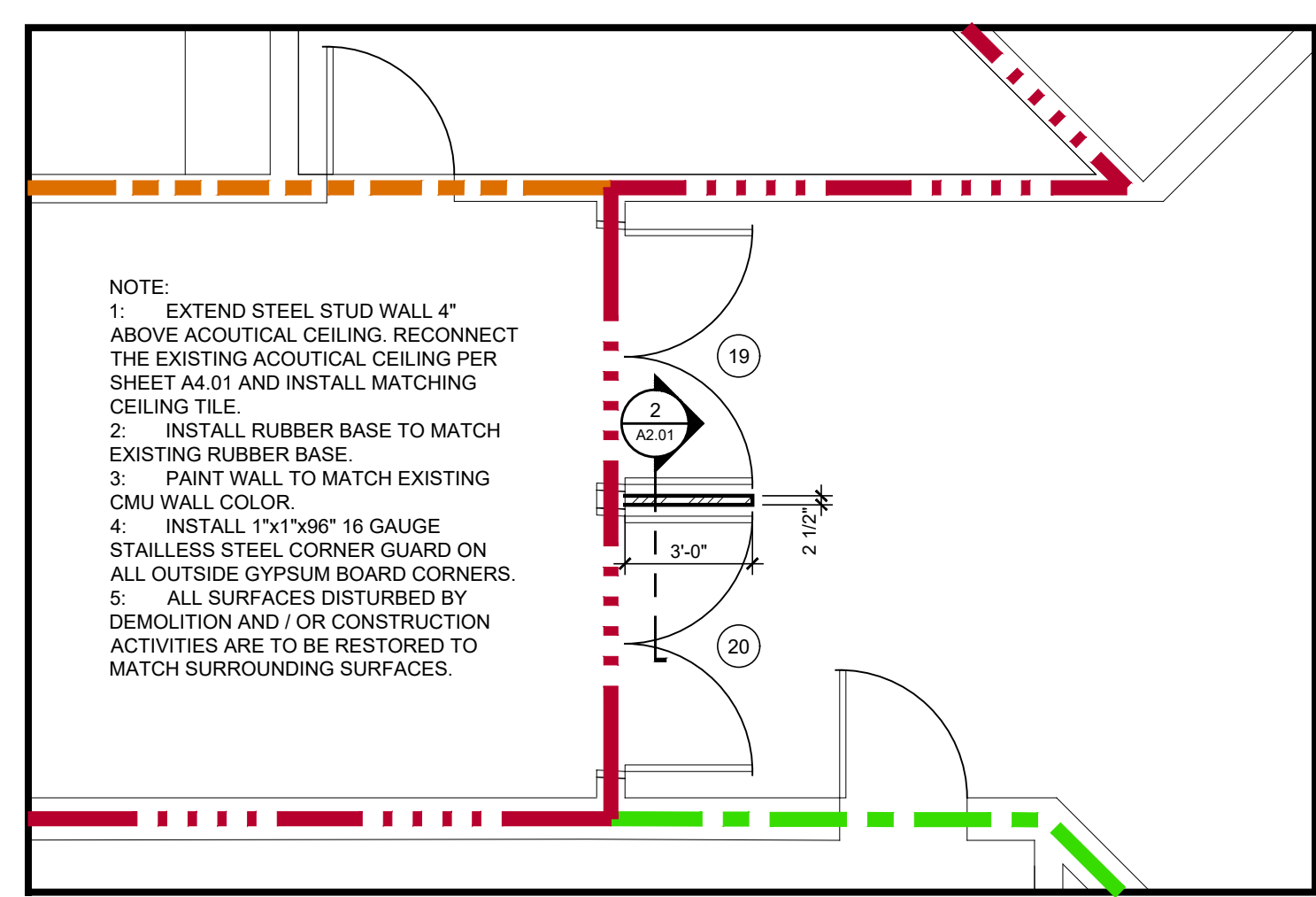
1 AREA "A" ENLARGED FLOOR AREA
 SCALE: 1/4" = 1'-0"



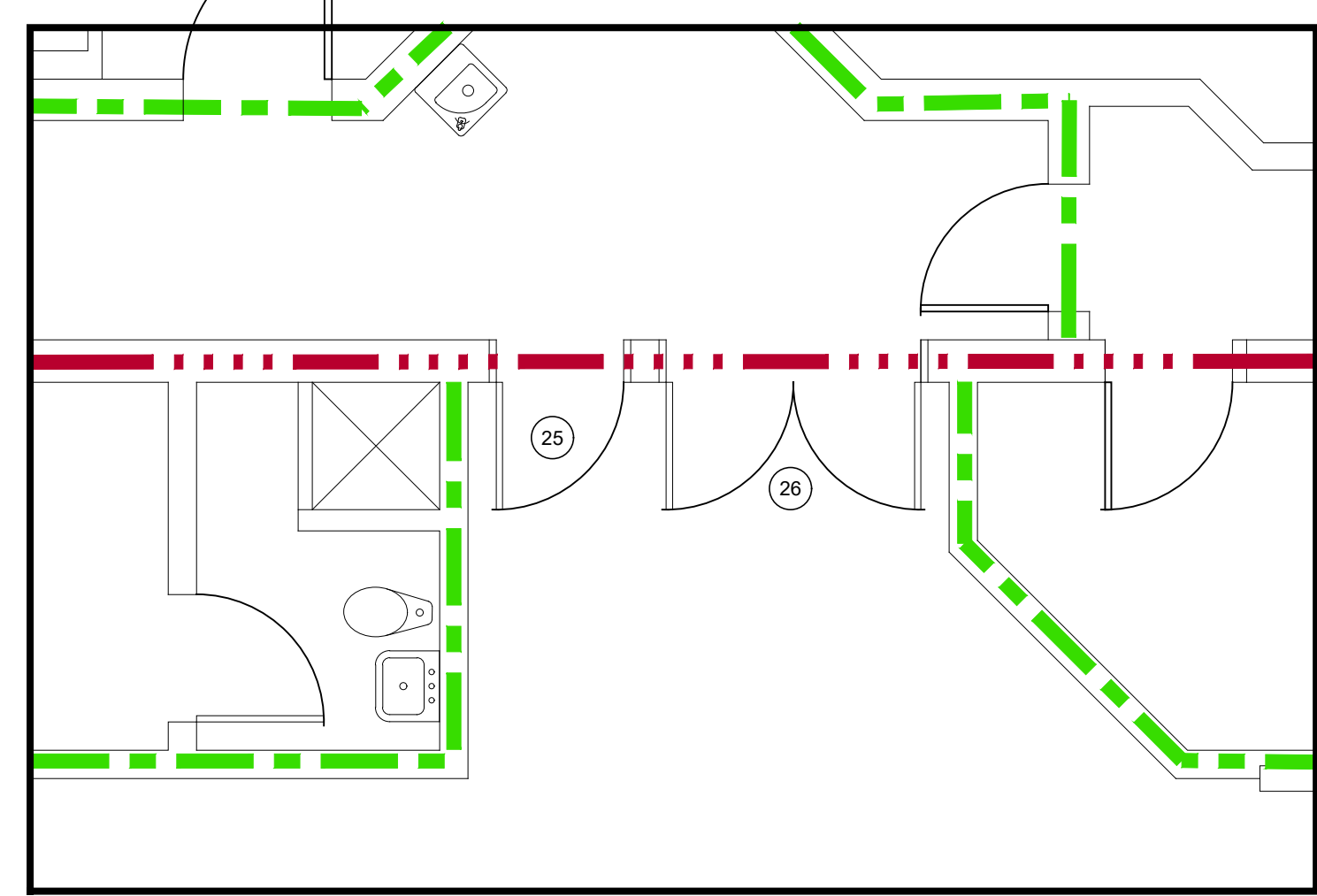
2 AREA "B" ENLARGED FLOOR AREA
 SCALE: 1/4" = 1'-0"



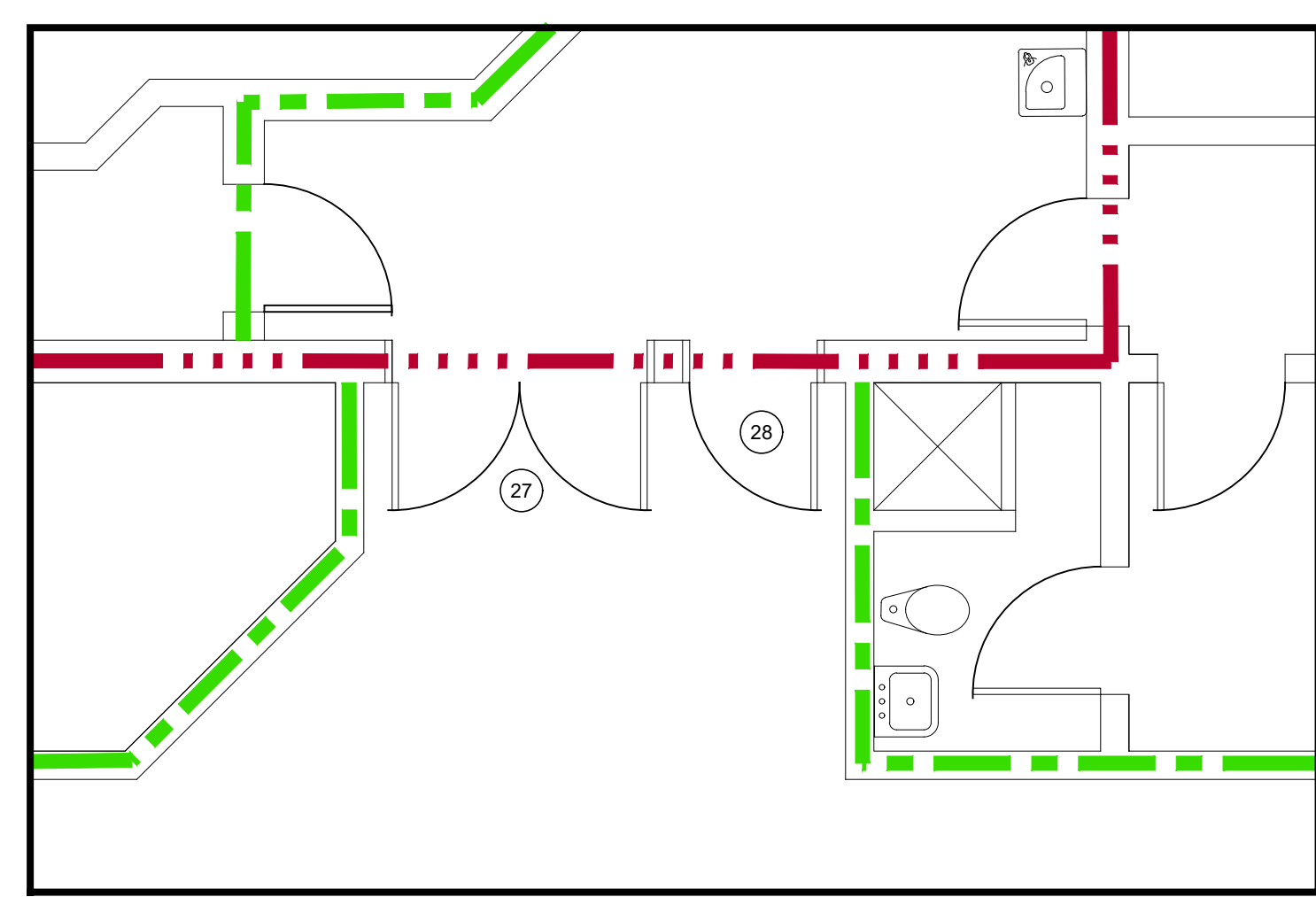
3 AREA "C" ENLARGED FLOOR AREA
 SCALE: 1/4" = 1'-0"



4 AREA "D" ENLARGED FLOOR AREA
 SCALE: 1/4" = 1'-0"

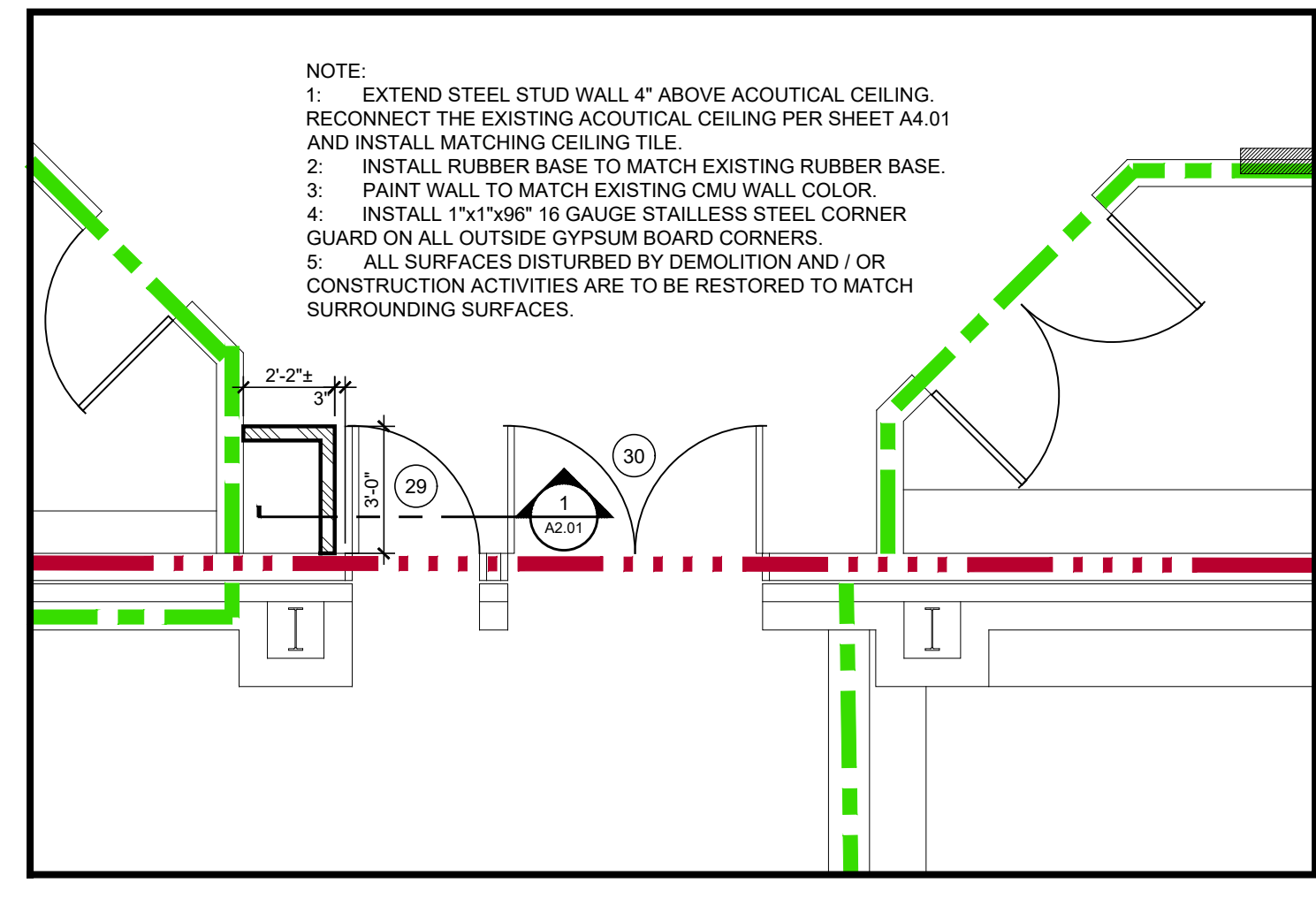


5 AREA "E" ENLARGED FLOOR AREA
 SCALE: 1/4" = 1'-0"

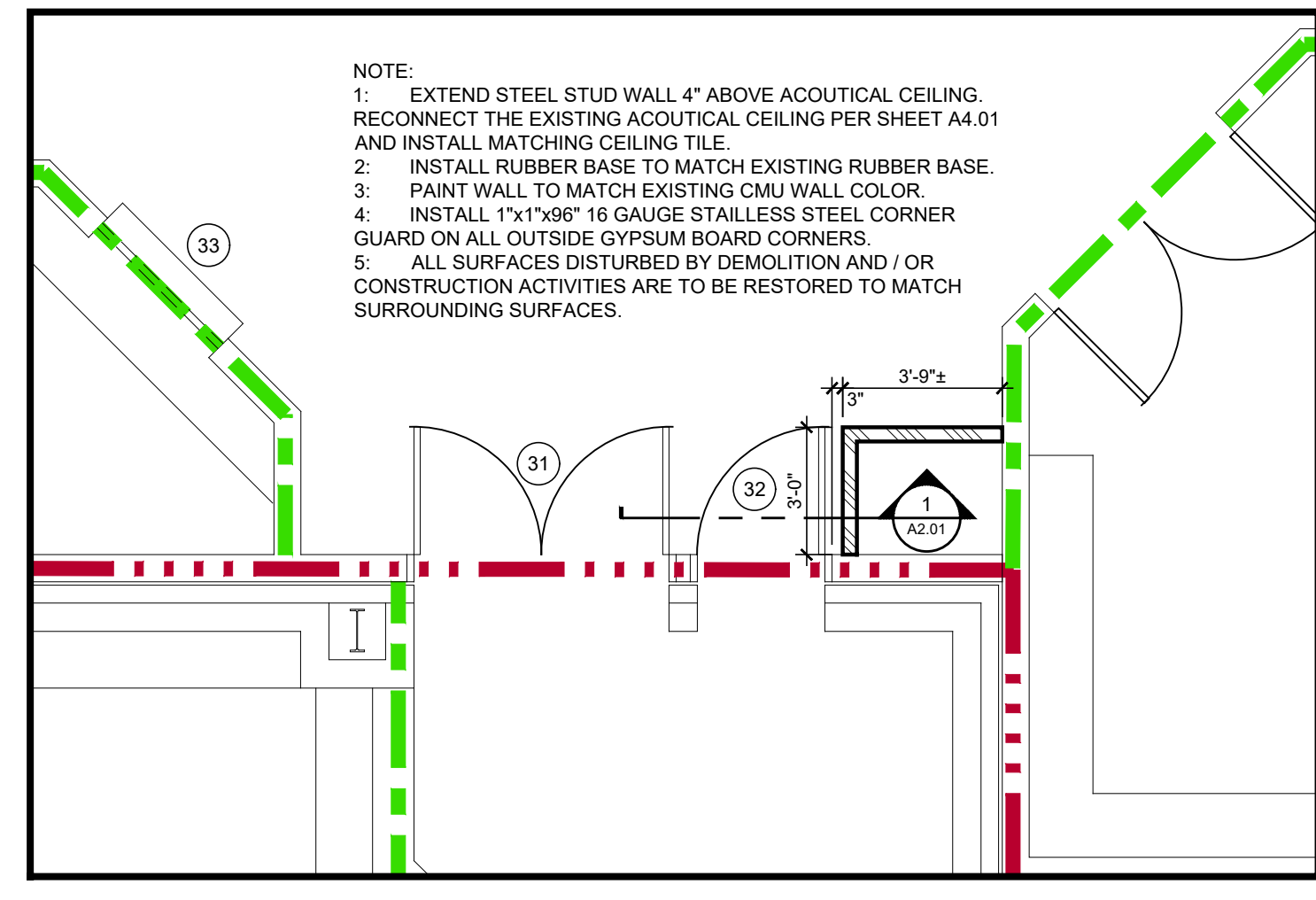


6 AREA "F" ENLARGED FLOOR AREA
 SCALE: 1/4" = 1'-0"

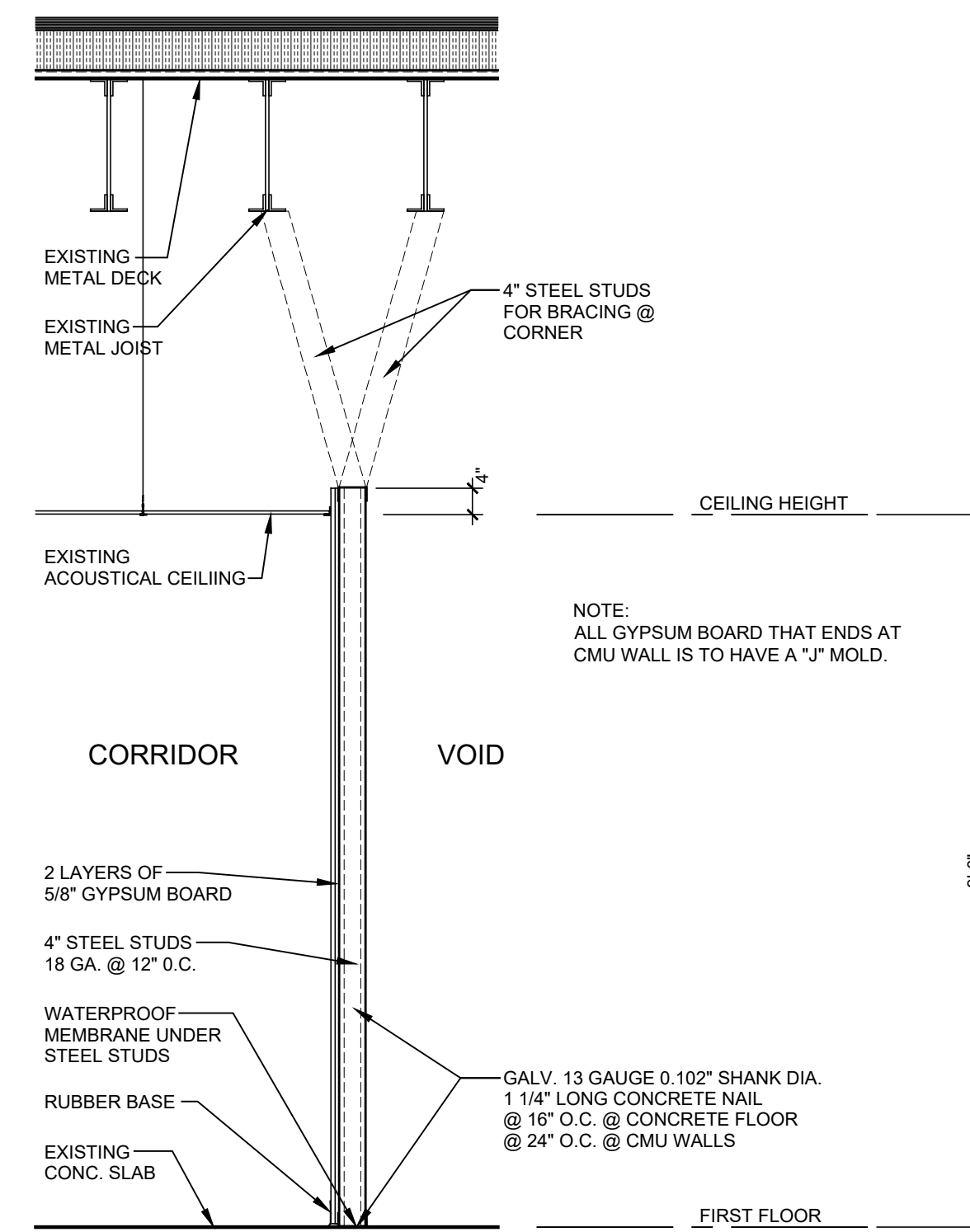
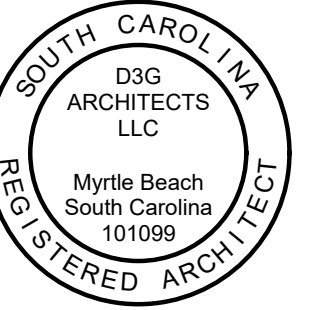
RATED BARRIER LEGEND:		GENERAL NOTES:	
	1 HOUR RATED BARRIER	1. DO NOT SCALE DRAWINGS. ALL WRITTEN DIMENSIONS GOVERN. REPORT ANY DISCREPANCIES TO ARCHITECT IMMEDIATELY PRIOR TO ROUGH-IN, ERECTION, FABRICATION OR INSTALLATION. VERIFY ALL DIMENSIONS SHOWN FOR ANY APPLIANCES, EQUIPMENT, ETC.	
	2 HOUR RATED BARRIER	2. ALL DIMENSIONS ARE TO FACE OF STEEL OR WOOD STUDS UNLESS OTHERWISE NOTED. (SEE WALL LEGEND).	
	3 HOUR RATED BARRIER	3. CONTRACTOR IS TO VISIT SITE AND FAMILIARIZE HIMSELF WITH EXISTING JOB CONDITIONS.	
WALL OR FLOOR ASSEMBLY HAVING A SPECIFIED FIRE RESISTANCE RATING DESIGNED AND CONSTRUCTED TO LIMIT THE SPREAD OF FIRE IN ACCORDANCE WITH THE INTERNATIONAL BUILDING CODE. WALL ASSEMBLY SHALL EXTEND CONTINUOUSLY FROM FLOOR SLAB TO UNDERSIDE OF ROOF DECK. PENETRATIONS AND OPENINGS IN FIRE BARRIERS SHALL BE PROTECTED AS FOLLOWS:		4. CONTRACTOR IS TO FIELD-DETERMINE DIMENSIONS PRIOR TO COMMENCEMENT OF CONSTRUCTION ACTIVITIES.	
1. ALL DOORS, FRAMES AND HARDWARE IN FIRE BARRIERS SHALL BE RATED AND LABELED AS FOLLOWS:		5. CONTRACTOR IS TO NOTIFY ARCHITECT OF ANY DISCREPANCIES DISCOVERED PRIOR TO PROCEEDING WITH WORK.	
Ⓞ 1 HOUR RATED BARRIER	- 45 MIN. SHAFT - 60 MIN. EXTERIOR WALLS - 45 MIN. ACCESS CORRIDORS - 20 MIN.	6. ALL DETAILS AND WALL SECTIONS ON THE DRAWINGS ARE EXTENDED TO BE TYPICAL AND SHALL BE CONSTRUED TO APPLY TO ANY SIMILAR SITUATION ELSEWHERE ON THE PROJECT EXCEPT WHERE A SEPARATE DETAIL IS SHOWN.	
Ⓞ 2 HOUR RATED BARRIER	- 90 MIN. EXTERIOR WALLS - 90 MIN.		
Ⓞ 3 HOUR RATED BARRIER	- 180 MIN. EXTERIOR WALLS - 90 MIN.		
2. ALL PENETRATIONS AND MISCELLANEOUS OPENINGS SHALL BE SEALED WITH "NFPA" APPROVED MATERIALS. SEE SHEET "A3.01"			
3. SEAL FIRE RATED BARRIERS TO FIRE RATED CEILING WITH "NFPA" APPROVED MATERIALS. SEE SHEET "A3.01"			
PLAN LEGEND:		WALL LEGEND:	
	DOOR TYPE 04. SEE DOOR NUMBER 04 ON SHEET "A3.01".		EXISTING CMU WALL. 8" OR 12" CMU WALL.
	SEE WALL SECTION "1" ON SHEET "A2.01"		INTERIOR WALL. 4" OR 2 1/2" STEEL STUDS 18 GAUGE @ 12" O.C. WATERPROOF MEMBRANE BETWEEN STEEL STUD TRACK & CONCRETE W/ 2 LAYERS OF 5/8" GYPSUM BOARD ON CORRIDOR SIDE. EXTEND TO 4" ABOVE ACOUSTICAL CEILING. BRACING AS REQUIRED. U.N.O.



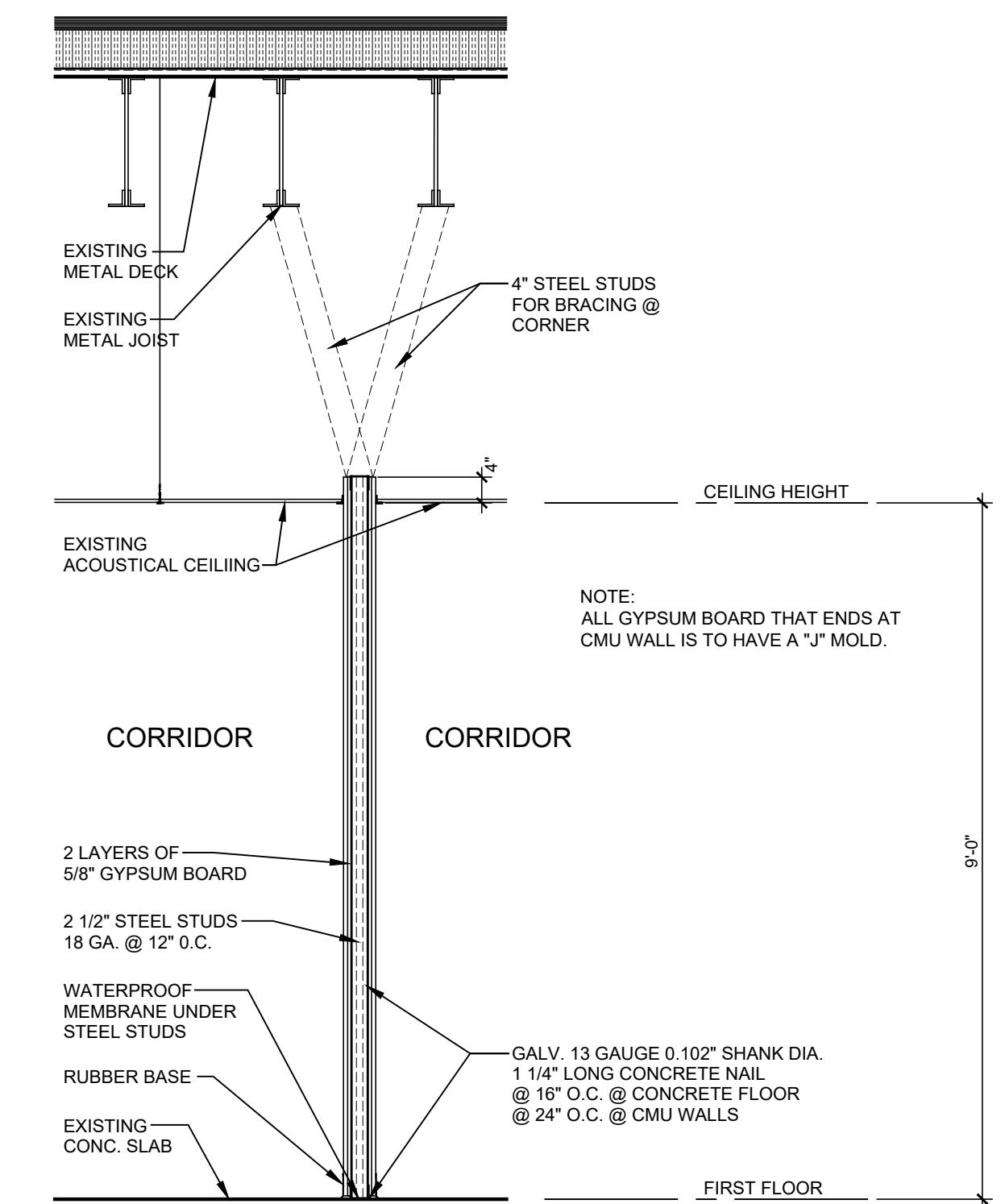
7 AREA "G" ENLARGED FLOOR AREA
 SCALE: 1/4" = 1'-0"



8 AREA "H" ENLARGED FLOOR AREA
 SCALE: 1/4" = 1'-0"



1
 A2.01 **TYPICAL WALL SECTION**
 SCALE: 1/2" = 1'-0"



2
 A2.01 **TYPICAL WALL SECTION**
 SCALE: 1/2" = 1'-0"

PROJECT TITLE:
Renovations to St. James Middle School

TMS: 190-0003-053
 9775 St. James Road
 Myrtle Beach, SC

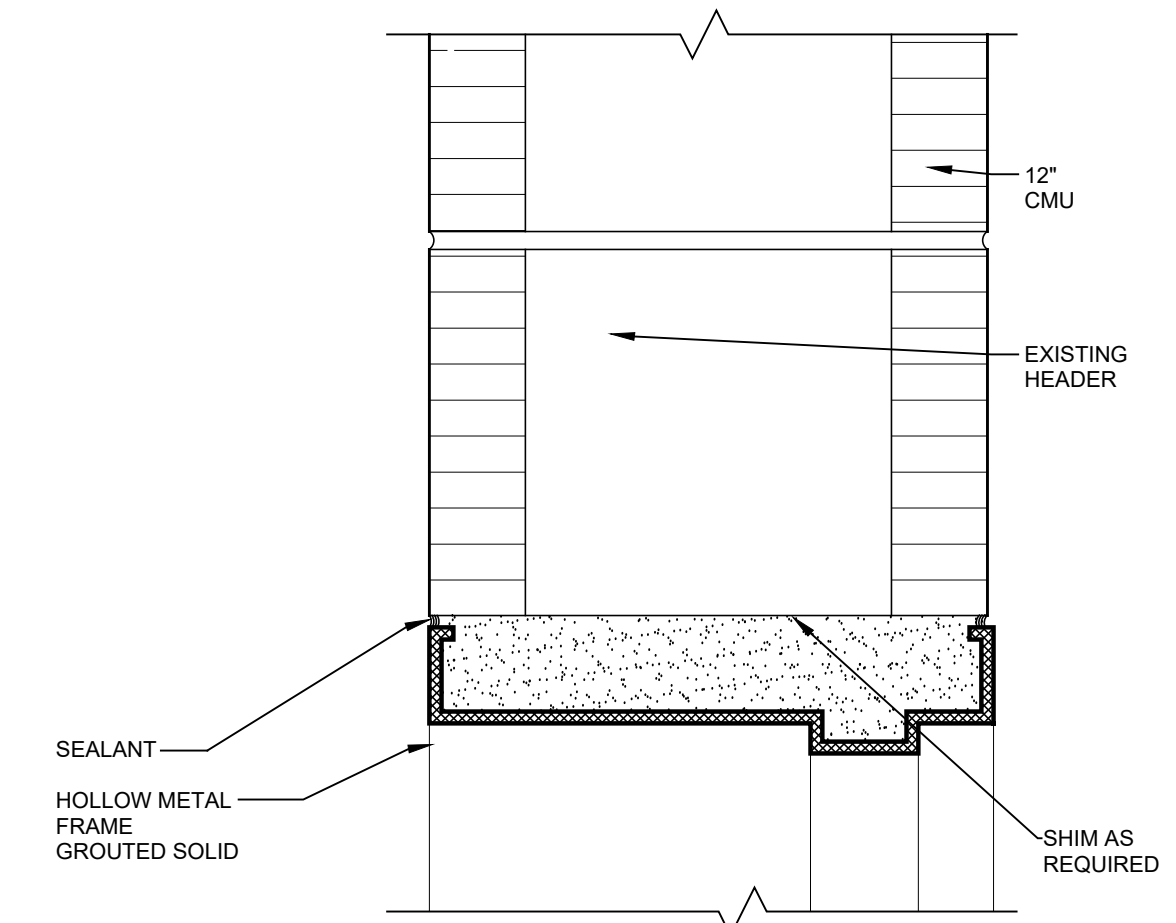
FILE NUMBER: 2123

SHEET TITLE: WALL SECTIONS

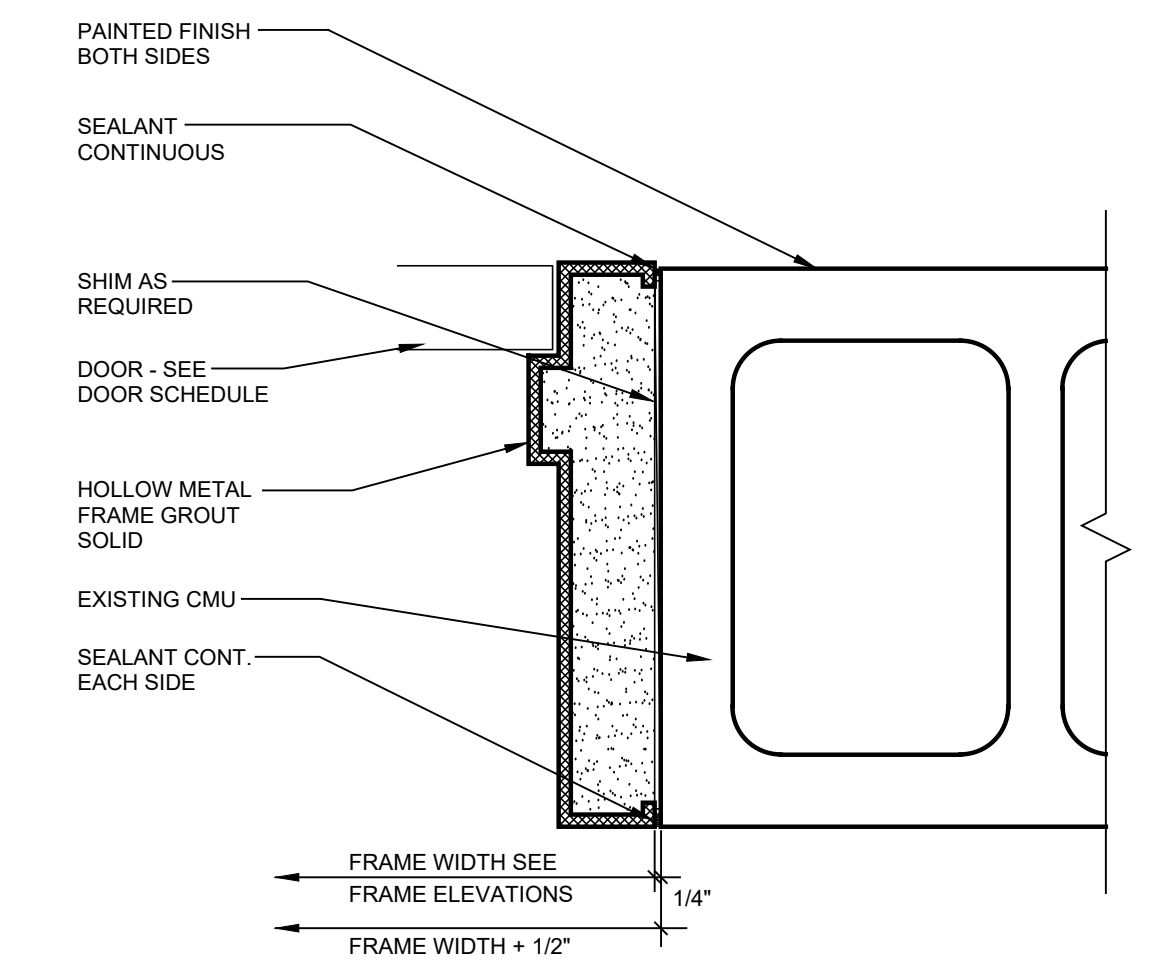
DATE: June 4, 2021
 REVISION DATE:

SHEET NUMBER:
A2.01

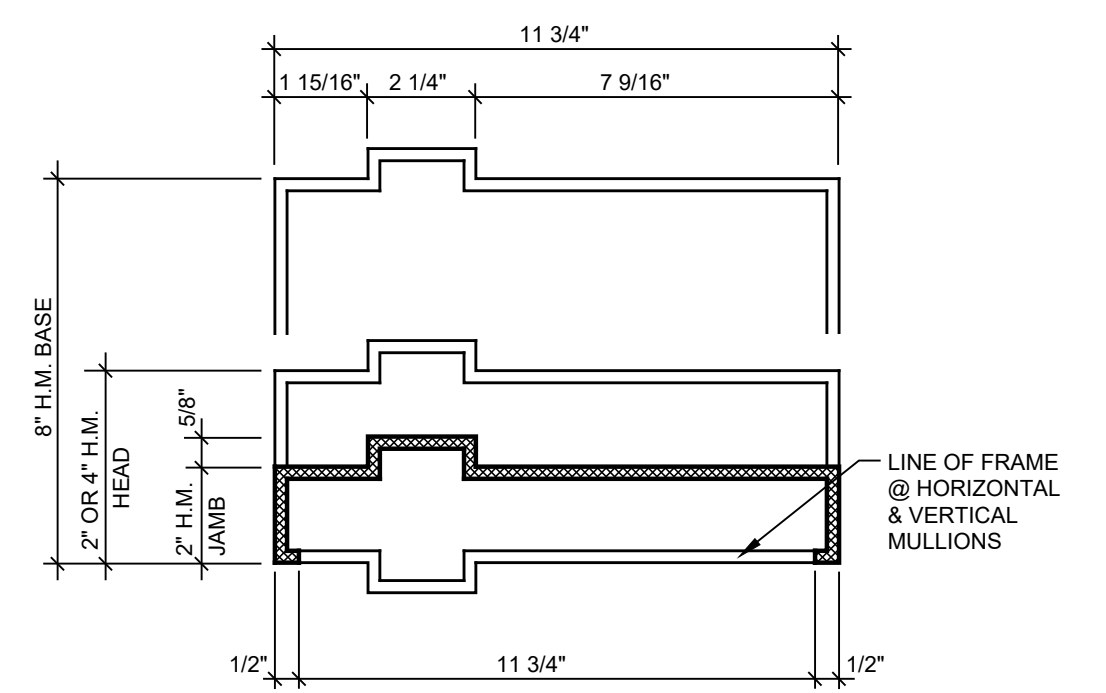
DOOR SCHEDULE										
DOOR NUMBER	DOOR SIZE	DOOR THICKNESS	FIRE RATING	ELEVATION	DOOR FRAME	CLOSER	REPLACE CLOSER	FINISH HARDWARE	MAGNETIC HOLD OPEN	REMARKS
01	--	--	--	--	--	--	--	--	--	NOTE 1
02	--	--	--	--	--	--	--	--	--	--
03	DELETED	--	--	--	--	--	--	--	--	--
04	--	--	--	--	--	--	@	--	@	--
05	--	--	--	--	--	--	@	--	@	--
06	--	--	--	--	--	--	--	--	@	--
07	--	--	--	--	--	--	--	--	@	--
08	--	--	--	--	--	--	--	--	@	--
09	--	--	--	--	--	--	--	--	@	--
10	--	--	--	--	--	--	--	--	@	--
11	--	--	--	--	--	--	--	--	@	--
12	--	--	--	--	--	--	--	--	@	--
13	--	--	--	--	--	--	--	--	@	--
14	--	--	--	--	--	--	--	--	@	NOTE 1
15	--	--	--	--	--	--	--	--	@	--
16	--	--	--	--	--	--	--	--	@	NOTE 2
17	--	--	--	--	--	--	@	--	@	--
18	--	--	--	--	--	--	@	--	@	--
19	--	--	--	--	--	--	@	--	@	--
20	--	--	--	--	--	--	@	--	@	--
21	--	--	--	--	--	--	@	--	@	NOTE 3
22	--	--	--	--	--	--	@	--	@	NOTE 3
23	DELETED	--	--	--	--	--	--	--	@	--
24	DELETED	--	--	--	--	--	--	--	@	--
25	--	--	--	--	--	--	--	--	@	--
26	--	--	--	--	--	--	@	--	@	NOTE 3
27	--	--	--	--	--	--	--	--	@	--
28	--	--	--	--	--	--	--	--	@	--
29	--	--	--	--	--	--	--	--	@	--
30	--	--	--	--	--	--	--	--	@	NOTE 3
31	--	--	--	--	--	--	--	--	@	--
32	3'-0"x6'-8"	1 3/4"	180 MIN	D2	HM-02	@	--	@	@	CONTINUOUS HINGES
33	--	--	--	--	--	--	--	--	@	NOTE 4
34	--	--	--	--	--	--	--	--	@	NOTE 4



C MASONRY EXTERIOR HOLLOW METAL HEAD
 A3.01 SCALE: 3" = 1'-0" DOR_002L



D INTERIOR DOOR JAMB
 A3.01 SCALE: 3" = 1'-0" DOR_045



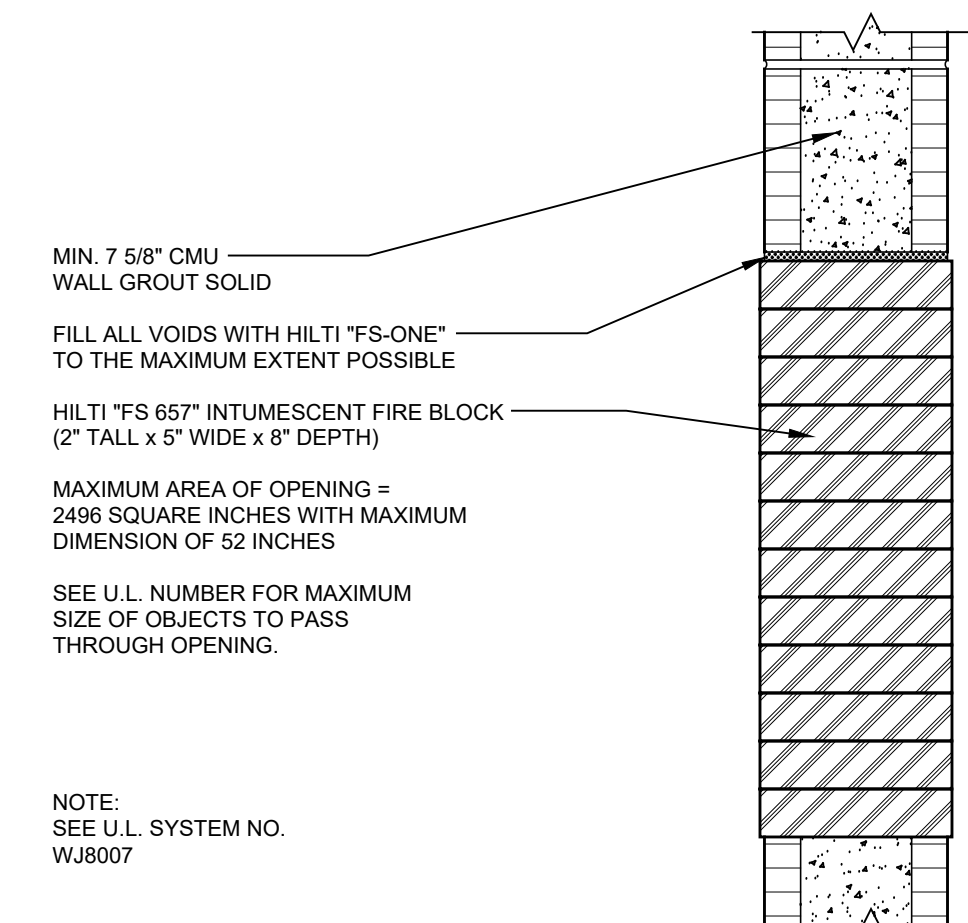
D 10 3/4" WIDE HOLLOW METAL H.M. FRAME SECTION
 A3.01 SCALE: 3" = 1'-0" DOR_090E

DOOR NOTES:

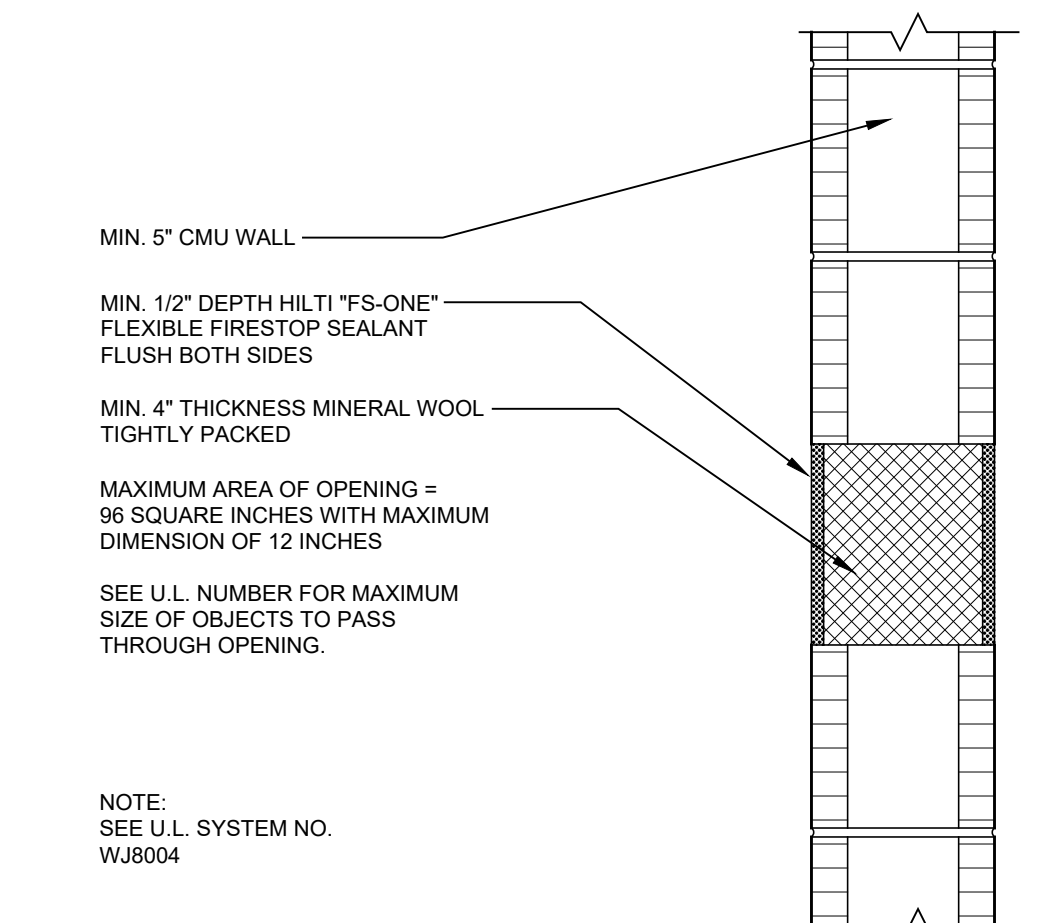
- ADJUST THE DOOR OR GRIND THE FRAME OR DOOR AT THE TOP, SO THAT THE DOOR WILL CLOSE & LATCH.
- INSTALL A CENTER MULLION AND VERIFY THAT DOORS CLOSE & LATCH.
- ADJUST THE DOOR OR CLOSURE TO MAKE THE DOORS CLOSE & LATCH.
- VERIFY THAT THE OVERHEAD 1 HOUR RATED DOOR IS WORKING.

DOOR NOTES GENERAL:

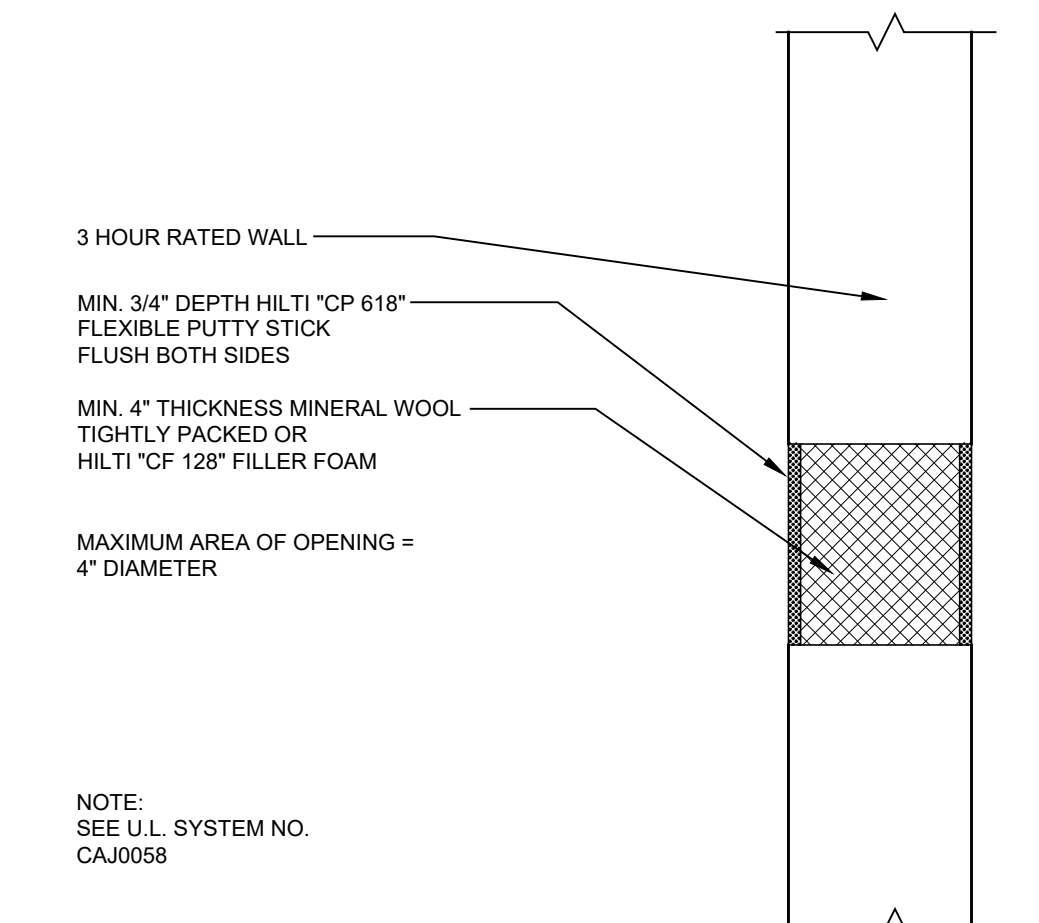
A: INSTALL 3/4" CONDUIT FROM ALL ADDED MAGNETIC HOLD OPEN DEVICES TO THE CLOSERS ELECTRICAL PANEL AND A 2 1/2" DEEP SINGLE GANG BOX AT 6'-4" AFF. INSTALL WIRING AND BREAKER PER MANUFACTURE SPECS.



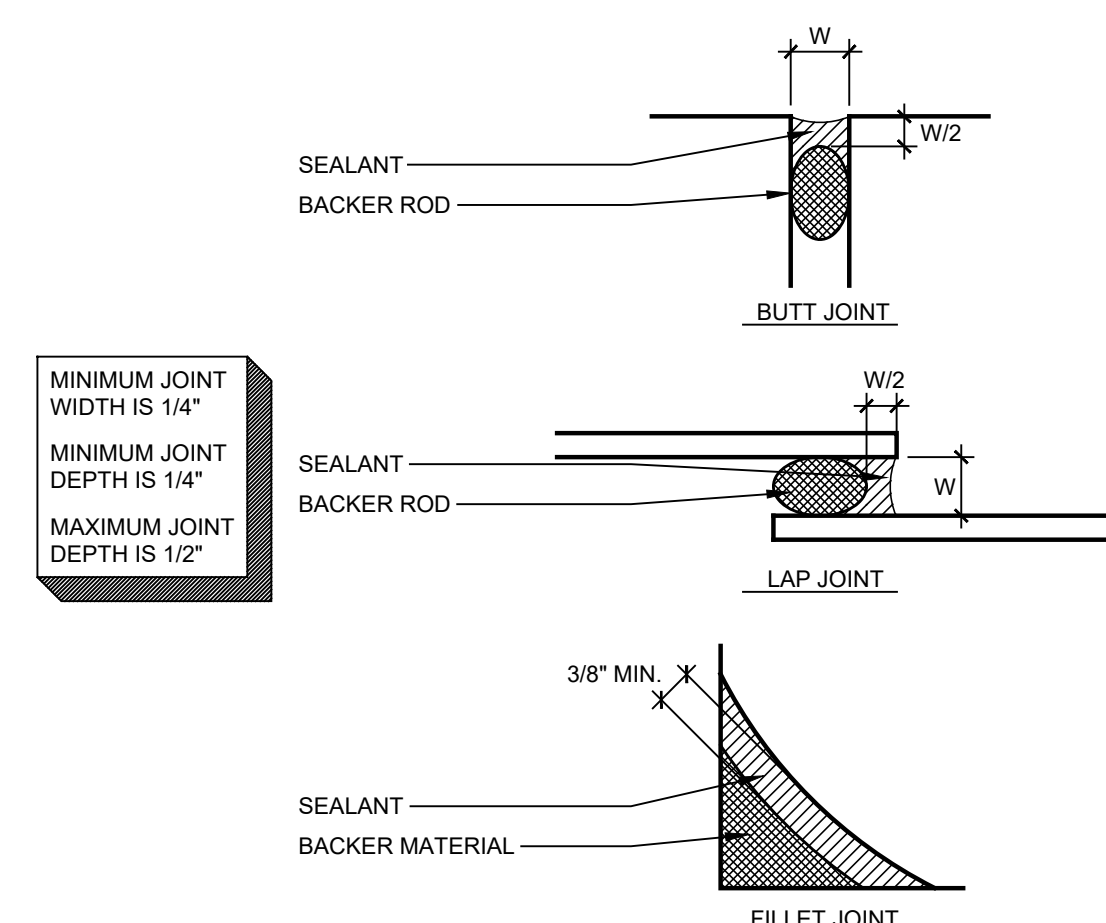
E 1, 2 OR 3 HOUR CMU WALL 3 HR LARGE PENETRATION
 A3.01 SCALE: 1 1/2" = 1'-0" FIR_030



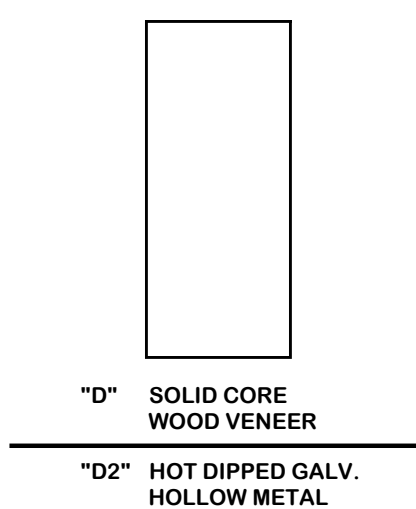
F 1 OR 2 HOUR CMU WALL 1 & 2 HR PENETRATION
 A3.01 SCALE: 1 1/2" = 1'-0" FIR_030



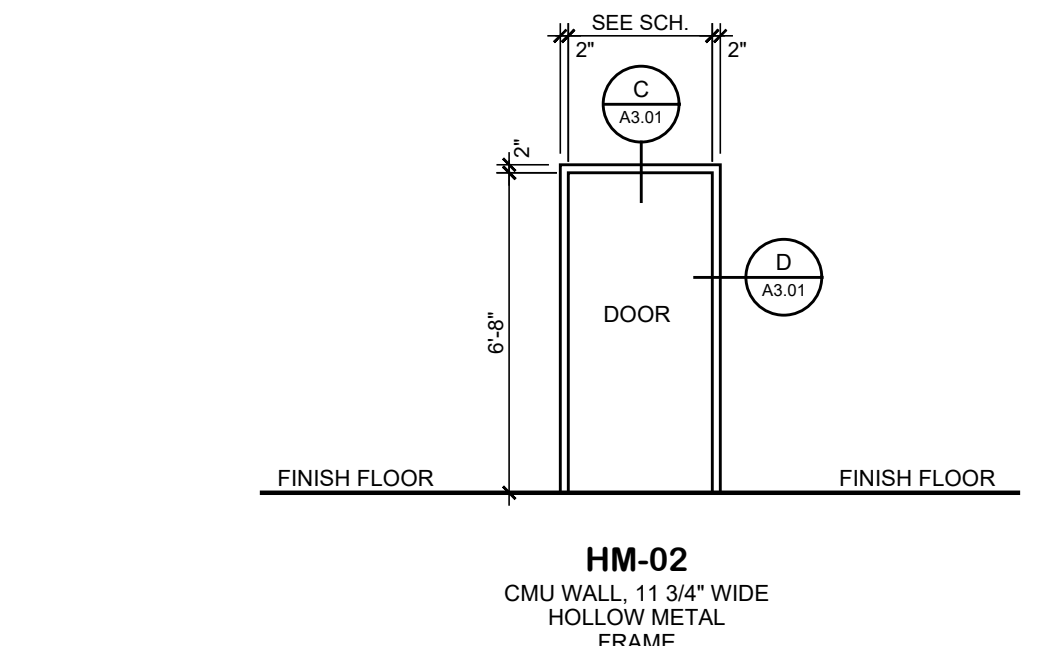
G 3 HOUR CMU WALL/FLOOR 3 HR RATED OPENING
 A3.01 SCALE: 1 1/2" = 1'-0" FIR_032



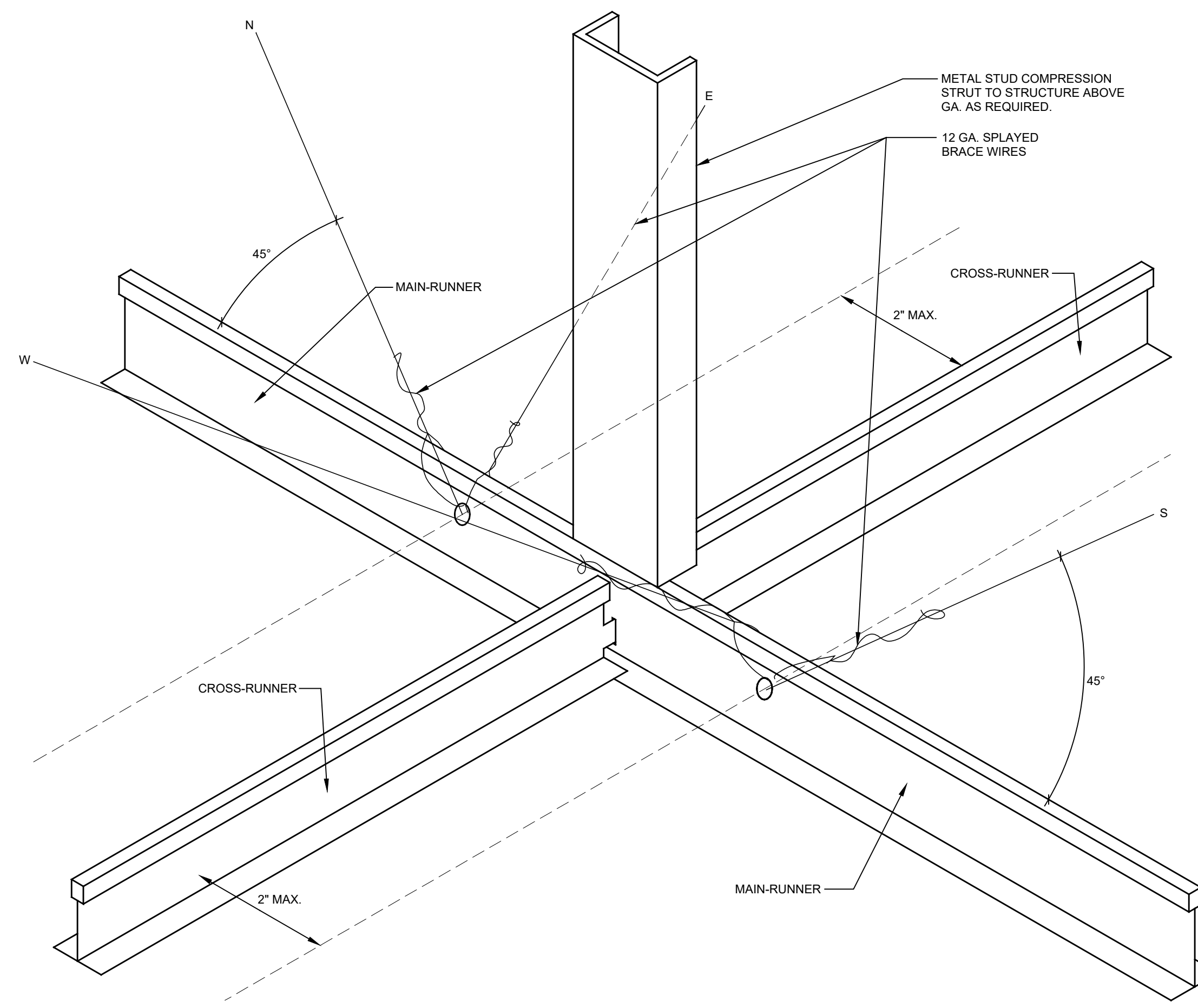
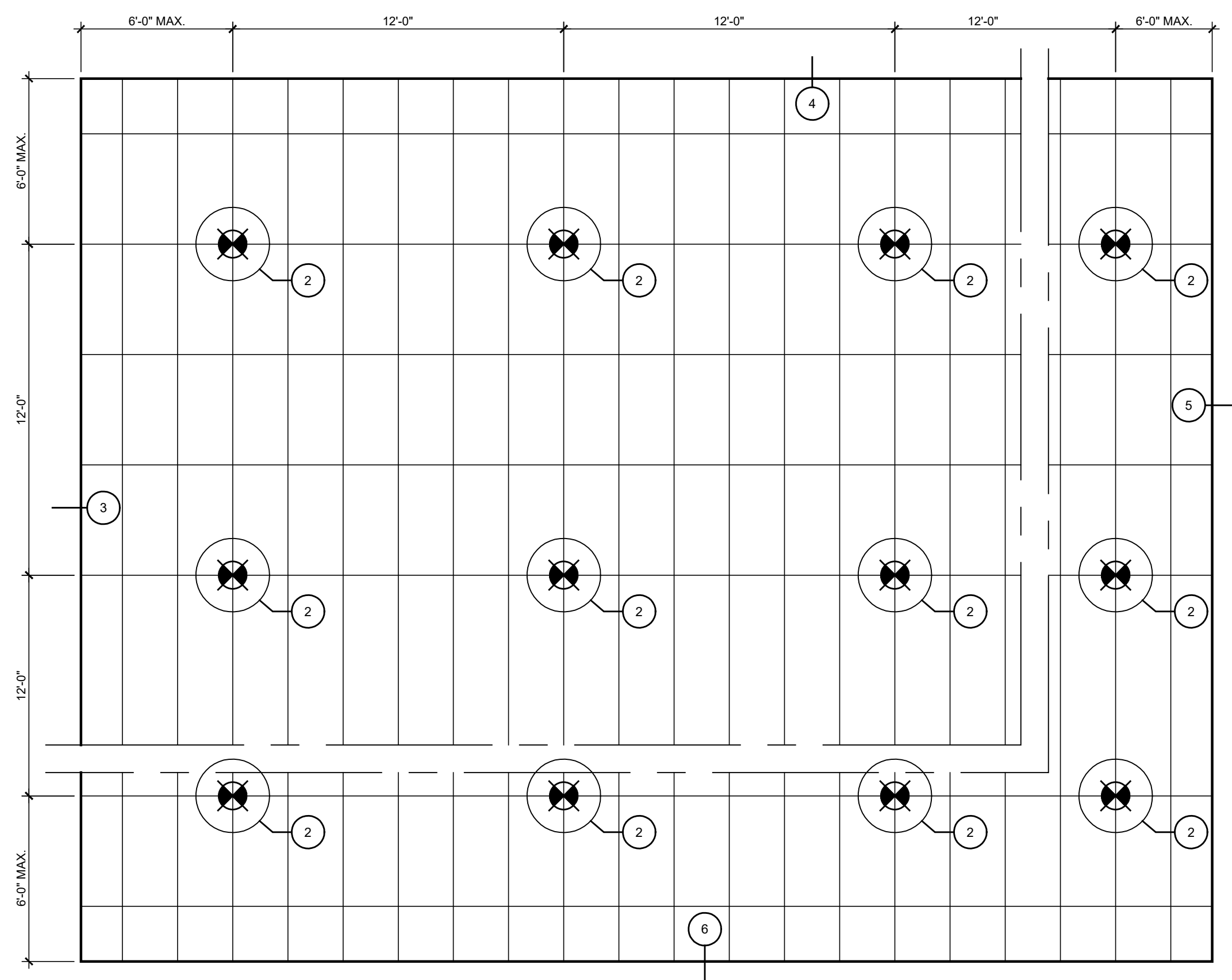
H SEALANT CONNECTIONS
 A3.01 SCALE: 6" = 1'-0" MIS_300



1 DOOR TYPES
 A3.01 SCALE: 1/4" = 1'-0" DOR_TYP2

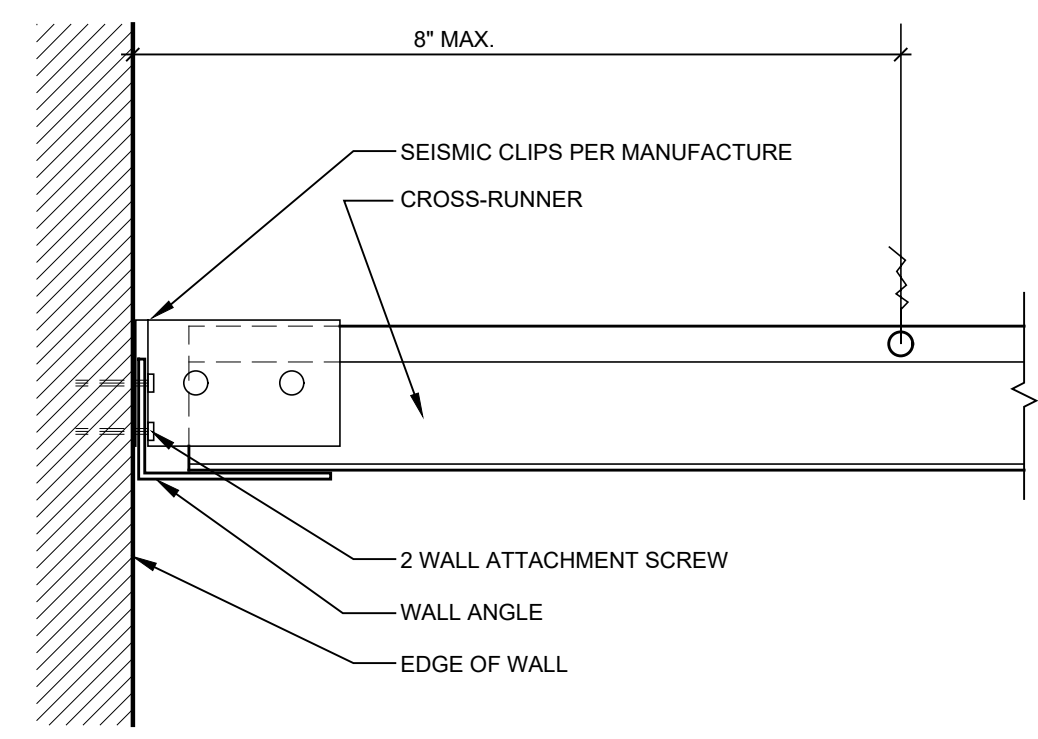
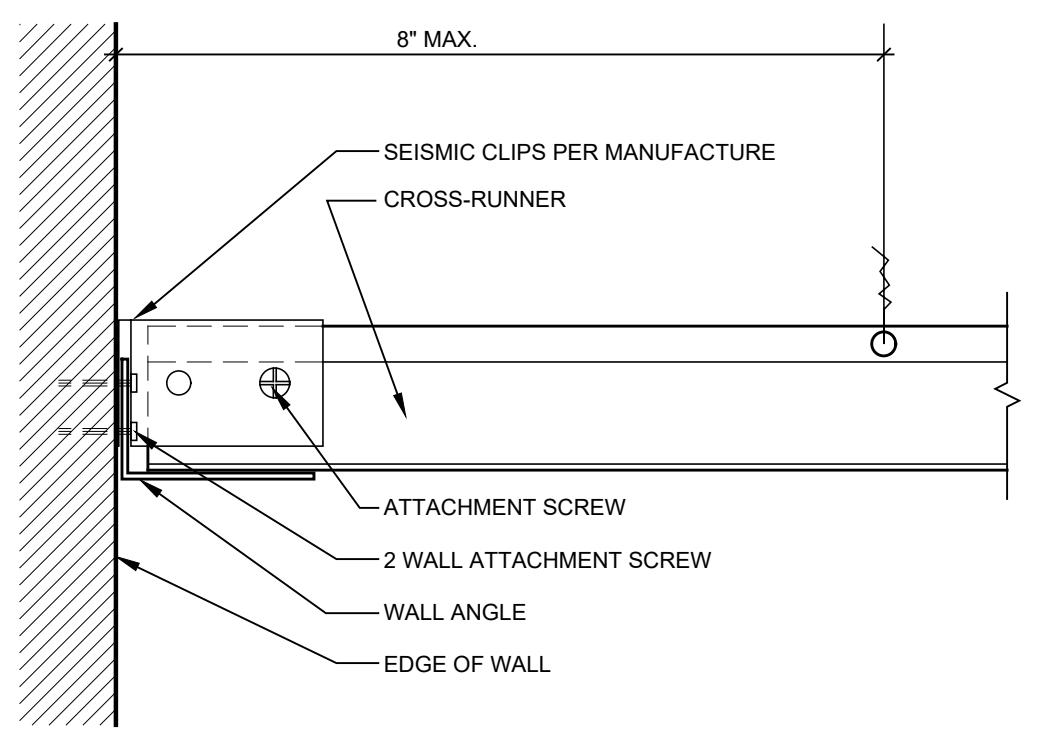
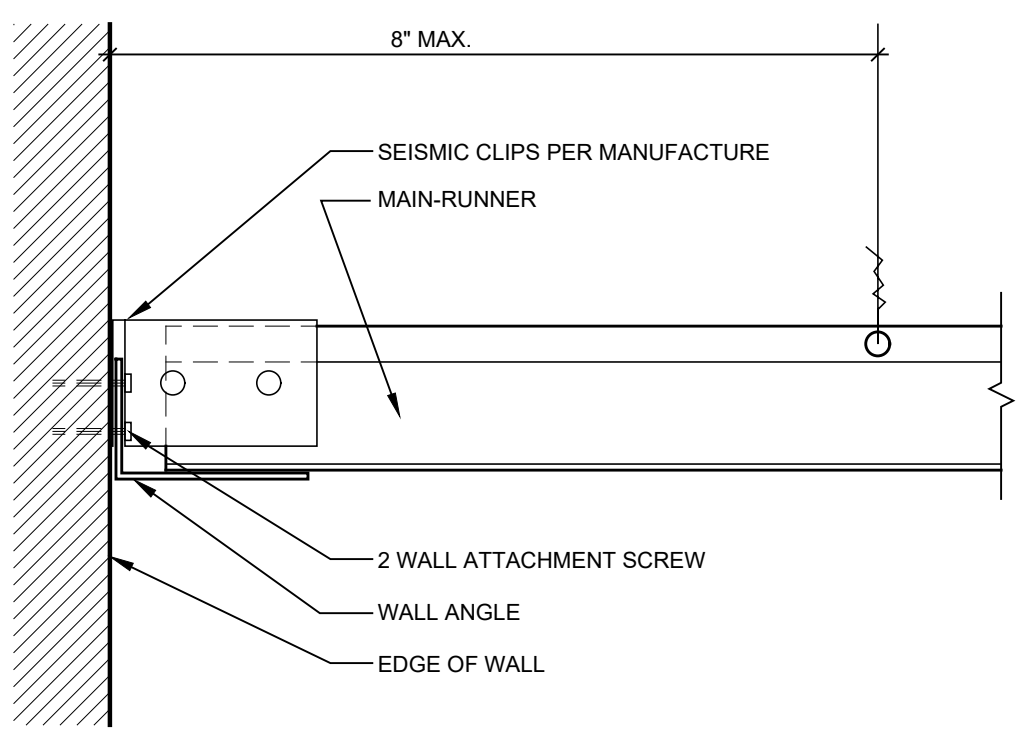
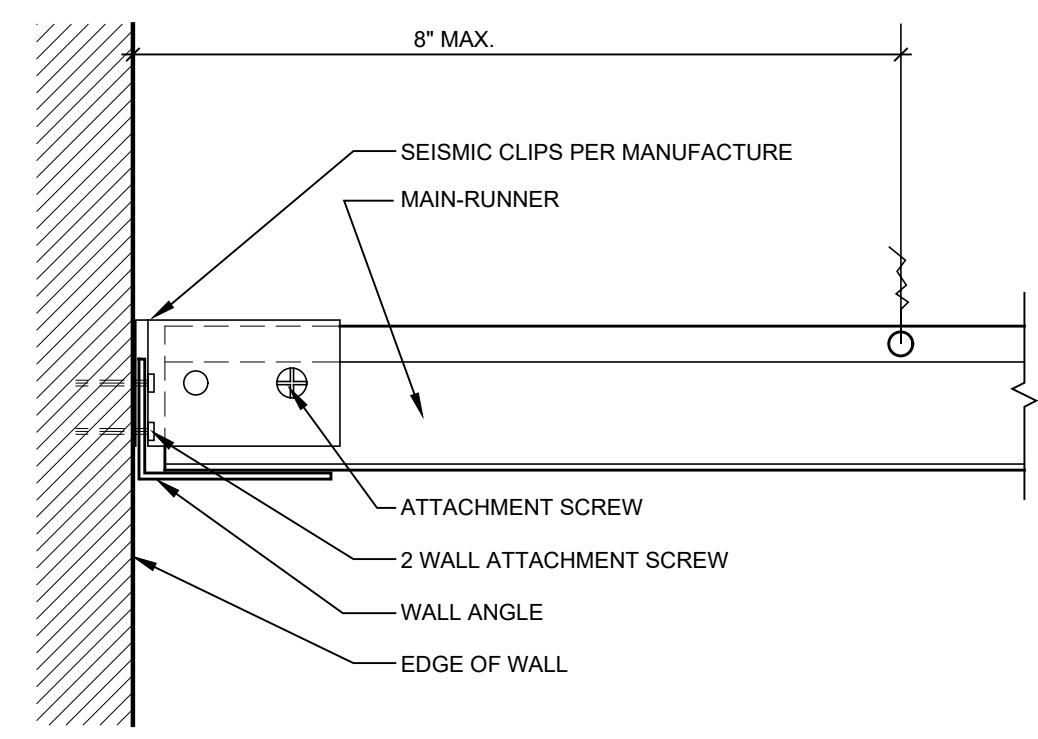


2 HOLLOW METAL FRAMES TYPES
 A3.01 SCALE: 1/4" = 1'-0"



1 TYPICAL BRACING DETAIL FOR A SPACE OVER 1,000 SF
 SCALE: 1/4" = 1'-0"

2 HORIZONTAL SEISMIC RESTRAINT CEILING GRID (SEISMIC)
 SCALE: 6" = 1'-0"



3 MAIN-RUNNER @ WALL (ATTACHED) CEILING GRID (SEISMIC)
 SCALE: 6" = 1'-0"

4 MAIN-RUNNER @ WALL (NOT ATTACHED) CEILING GRID (SEISMIC)
 SCALE: 6" = 1'-0"

5 CROSS-RUNNER @ WALL (ATTACHED) CEILING GRID (SEISMIC)
 SCALE: 6" = 1'-0"

6 CROSS-RUNNER @ WALL (NOT ATTACHED) CEILING GRID (SEISMIC)
 SCALE: 6" = 1'-0"

ACOUSTICAL CEILING 2018 SEISMIC INSTALLATION

1.0 INSTALLATION
 A. GENERAL: INSTALL ACOUSTICAL PANEL CEILING TO COMPLY WITH ASTM C 636 AND SEISMIC DESIGN CATEGORY D, E & F REQUIREMENTS. PER MANUFACTURER'S WRITTEN INSTRUCTIONS AND CISCA'S "CEILING SYSTEMS HANDBOOK FOR ZONES 3-4", AND IBC 2018 SEISMIC INSTALLATION REQUIREMENTS.

2.0 QUALITY ASSURANCE
 A. SOURCE LIMITATIONS: OBTAIN EACH TYPE OF ACOUSTICAL CEILING PANEL AND SUPPORTING SUSPENSION SYSTEM THROUGH ONE SOURCE FROM A SINGLE MANUFACTURER.
 B. SURFACE-BURNING CHARACTERISTICS: PROVIDE ACOUSTICAL PANELS WITH THE FOLLOWING SURFACE CHARACTERISTICS COMPLYING WITH ASTM E 1264 FOR CLASS A MATERIALS AS DETERMINED BY TESTING IDENTICAL PRODUCTS PER ASTM E 84.
 C. SMOKE-DEVELOPED INDEX: 450 OR LESS.
 D. SEISMIC STANDARD: SEISMIC DESIGN CATEGORY D. PROVIDE ACOUSTICAL PANEL CEILING DESIGNED AND INSTALLED TO WITHSTAND THE EFFECTS OF EARTHQUAKE MOTIONS ACCORDING TO THE FOLLOWING:
 E. PREINSTALLATION CONFERENCE: CONDUCT CONFERENCE AT PROJECT SITE TO COMPLY WITH REQUIREMENTS IN DIVISION 1 SECTION "PROJECT MANAGEMENT AND COORDINATION."

3.0 METAL SUSPENSION SYSTEMS, GENERAL
 A. COMPLY WITH CISCA 3-4 AND IBC 2006 SEISMIC INSTALLATION REQUIREMENTS.
 B. METAL SUSPENSION SYSTEM STANDARD: PROVIDE MANUFACTURER'S STANDARD DIRECT-HUNG METAL SUSPENSION SYSTEMS OF TYPES, STRUCTURAL CLASSIFICATIONS, AND FINISHES INDICATED THAT COMPLY WITH APPLICABLE REQUIREMENTS IN ASTM C 635.
 C. FINISHES AND COLORS, GENERAL: COMPLY WITH NAAMMS "METAL FINISHES MANUAL FOR ARCHITECTURAL AND METAL PRODUCTS" FOR RECOMMENDATIONS FOR APPLYING AND DESIGNATING FINISHES. PROVIDE MANUFACTURER'S STANDARD FACTORY-APPLIED FINISH FOR TYPE OF SYSTEM INDICATED.
 D. HIGH-HUMIDITY FINISH: COMPLY WITH ASTM C 635 REQUIREMENTS FOR "COATING CLASSIFICATION FOR SEVERE ENVIRONMENT PERFORMANCE" WHERE HIGH-HUMIDITY FINISHES ARE INDICATED.
 E. ATTACHMENT DEVICES: SIZE FOR FIVE TIMES THE DESIGN LOAD INDICATED IN ASTM C 635, TABLE 1, "DIRECT HUNG," UNLESS OTHERWISE INDICATED. COMPLY WITH SEISMIC DESIGN REQUIREMENTS.
 F. WIRE HANGERS, BRACES, AND TIES: PROVIDE WIRES COMPLYING WITH THE FOLLOWING REQUIREMENTS:
 G. ZINC-COATED, CARBON-STEEL WIRE: ASTM A 641/A 641M, CLASS 1 ZINC COATING, SOFT TEMPER.
 H. STAINLESS-STEEL WIRE: ASTM A 580/A 580M, TYPE 304, NONMAGNETIC.
 I. NICKEL-COPPER-ALLOY WIRE: ASTM B 164, NICKEL-COPPER-ALLOY UNS NO. N04400.
 J. SIZE: SELECT WIRE DIAMETER SO ITS STRESS AT 3 TIMES HANGER DESIGN LOAD (ASTM C 635, TABLE 1, "DIRECT HUNG") WILL BE LESS THAN YIELD STRESS OF WIRE, BUT PROVIDE NOT LESS THAN 0.106-INCH (2.69-MM) DIAMETER WIRE.
 K. HANGER RODS: MILD STEEL, ZINC COATED OR PROTECTED WITH RUST-INHIBITIVE PAINT.
 L. ANGLE HANGERS: ANGLES WITH LEGS NOT LESS THAN 7/8 INCH (22 MM) WIDE, FORMED WITH 0.04-INCH (1-MM) THICK, GALVANIZED STEEL SHEET COMPLYING WITH ASTM A 653/A 653M, G90 (Z275) COATING DESIGNATION; WITH BOLTED CONNECTIONS AND 5/16-INCH (8-MM) DIAMETER BOLTS.
 M. SEISMIC STABILIZER BARS: MANUFACTURER'S STANDARD PERIMETER STABILIZERS DESIGNED TO ACCOMMODATE SEISMIC FORCES.
 N. SEISMIC STRUTS: MANUFACTURER'S STANDARD COMPRESSION STRUTS DESIGNED TO ACCOMMODATE SEISMIC FORCES.
 O. SEISMIC CLIPS: MANUFACTURER'S STANDARD SEISMIC CLIPS DESIGNED AND SPACED TO SECURE ACOUSTICAL PANELS IN-PLACE.
 P. HOLD-DOWN CLIPS: WHERE INDICATED, PROVIDE MANUFACTURER'S STANDARD HOLD-DOWN CLIPS SPACED 24" (610 MM) O.C. ON ALL CROSS TEES.
 Q. IMPACT CLIPS: WHERE INDICATED, PROVIDE MANUFACTURER'S STANDARD IMPACT-CLIP SYSTEM DESIGNED TO ABSORB IMPACT FORCES AGAINST ACOUSTICAL PANELS.