

**Baldwin County School District**  
110 N ABC Street  
Milledgeville, Ga. 31061  
(478)453-4176 Phone  
(478)457-3360 Fax



**Request for Quote**  
**#023-2017**  
**Electronic Signs for BCSD K-12 Schools**

**PERTINENT DATES**

November 30, 2017	Request for Quote Issued
December 5, 2017	Deadline for Questions
December 8, 2017	Deadline to submit Quote at 10:00AM

## Baldwin County School District

<p><b>REQUEST FOR Quote #023-2017 for Electronic Signs for BCSD K-12 Schools</b></p>
--

The Baldwin County School District is seeking quotes for electronic signs for BCSD K-12 schools.

**INTERESTED PARTIES:** Interested parties may obtain specifications from the Baldwin County School District's Human Resources and Purchasing webpage under RFP/Bids section at: <https://www.baldwincountyschoolsga.org/human-resources>

**DEADLINE FOR SUBMISSION:** December 8, 2017

**SUBMISSION:** A signed copy of the quotes must be submitted by deadline day in a sealed envelope marked on the outside, "RFQ #023-2017 Request For Quotes for "Electronic Signs for BCSD K-12 Schools" The sealed, marked envelope containing the copy of quotes should be addressed to:

Judi Battle  
Director of Procurement  
Baldwin County School District  
110 N ABC Street  
Milledgeville, GA. 31061

All quotes must be signed by an authorized representative of the company in spaces provided within this RFQ and must be returned with the quote.

**SUBMISSION OF QUOTE**

Quotes shall be submitted in three (2) sections: (1) price, and (2) business experience/stability. **Eight (8) sealed bids (one (1) original, seven (7) copies) shall be provided.**

**QUESTION/INQUIRES:** All inquiries and requests for information regarding submission of quotes shall be directed to Judi Battle, Director of Procurement, Baldwin County School District, by e-mail at [judi.battle@baldwin.k12.ga.us](mailto:judi.battle@baldwin.k12.ga.us) Responses to questions will be posted to the school district's website at the Human Resources and Purchasing webpage under RFP/Bids section <https://www.baldwincountyschoolsga.org/human-resources>

**EQUAL OPPORTUNITY EMPLOYER:** The District is an equal opportunity employer and reserves the right to refuse or reject any or all proposals that are not in the best interest of the school system.

**WAIVER OF FORMAL DEFECT:** The District may waive any technical or formal defect in any proposal not prepared and submitted in accordance with the provisions herein, and reject any or all quotes. The District will make the award to the most responsive Contractor in its own judgement and in the best interest of the District. The District reserves the right not to award a contract to any bidder.

**EQUAL OPPORTUNITY, DRUG-FREE EMPLOYER, E-VERIFY:**

The Contractor must comply with all statutes of the Equal Opportunity Employer Act, be a Drug-Free Employer in the State of Georgia, and participate in the federal E-Verify program. Contractor must submit an E-Verify Affidavit with its proposal (form attached). Contractor must drug test employees before employment and conduct criminal background checks as well as fingerprint checks according to Georgia's requirements for school employees prior to the employee beginning allowed work or be present at any District facility where students are present. No employee with a felony conviction or any conviction of sex crime, crime of moral turpitude, or any crime against a child may be assigned by Contractor to a District facility. Copies of drug tests and background tests must be permanently maintained on file by the Contractor and must be made available for inspection by the District upon request.

**AWARD METHOD:**

The District reserves the right to award a complete proposal based on a one year term with the option for annual renewal for three annual renewals. The award of this contract will not be based on price alone. The BCSD reserves the right not to award the bid to any bidder if it is in the best interest of the school district not to award a bid.

**EXEMPTION FROM TAXES:**

The District is exempt from State Sales Tax and Federal Excise Tax.

**INSURANCE**

When the responsive and responsible Offeror has been identified, he or she will be notified of the necessity to provide required insurance. Proof of insurance shall be provided within five (5) days of the date of written notification to the Offeror. Providing proof of and maintaining the

insurance coverage indicated below will be reviewed as part of the Offeror's qualifications, including but not limited to whether the Offeror is responsive or responsible.

**PERMITS, TAXES, LICENSES, BONDS, ORDINANCES, AND AGREEMENTS**

The Offeror shall, at his own expense, obtain all necessary licenses, permits and bonds; give all notices, pay all license fees and taxes, and comply with all applicable local, State and Federal Laws, ordinances, rules and regulations. The Offeror shall maintain the licenses, permits and bonds required in a current status after award and throughout the course of the contract.

The Offeror shall agree that in the performance of the contract, they shall comply with all local agreements which they have made with any association union or other entity with respect to wages, salaries and working conditions, so as not to cause inconvenience, picketing or work stoppage.

**NON-APPROPRIATION**

Notwithstanding any other provision of this agreement, the parties hereto agree that the charges hereunder are payable to the Offeror by BCSD solely from appropriations received by BCSD. In the event such appropriations are determined in the sole discretion of the Chief Financial Officer of BCSD no longer exist or to be insufficient with respect to the charges payable hereunder, this agreement shall terminate without further obligation of BCSD. In such Event, the Chief Financial Officer of BCSD shall certify to the Offeror the occurrence thereof, and such certification shall be conclusive.

**TERMINATION FOR CONVENIENCE**

BCSD reserves the right to terminate for convenience, at any time for any reason with no penalty, any contract awarded through this solicitation by providing the Offeror with thirty (30) days written notice.

**OFFEROR'S APPLICATION FORM**

If the Offeror does not have an application on file with BCSD, please complete the attached Vendor Approval Request Form and return with proposal.

## **FORCE MAJEURE**

Neither BCSD nor Offeror shall be responsible for any delay or failure of any other obligations hereunder due to any occurrences commonly known as force majeure, including but not limited to, acts of God, war, acts of terror, labor disputes, strikes, lockouts, civil commotion, or acts of government or government agency or officers.

## **NON-DISCRIMINATION**

The Offeror, by the submission of a proposal or the acceptance of an order or contract, does agree in providing the goods and services covered under the proposal or contract not to discriminate in any way against any person or persons or refuse employment of any person or persons on account of race, color, religion, age, disability, national origin, sex, or any other legally protected status.

## **BCSD NON-DISCRIMINATION**

BCSD does not discriminate on the basis of race, color, religion, sex, national origin, age, disability, or any legally protected status in any of its employment practices, education programs, services or activities.

## **MINORITY AND FEMALE BUSINESS ENTERPRISES**

It is the intent of BCSD to assure that Minority Business Enterprises (MBE) and Female Business Enterprises (FBE) have an equal opportunity to participate in FCS Contracting requirements.

## **DRUG-FREE WORKPLACE**

By submission of a proposal, the Offeror certifies that he/she will not engage in the unlawful manufacture, sale distribution, dispensation, possession, or use of a controlled substance or drug during the performance of the contract and that a drug-free workplace will be provided for the Offeror's employees during the performance of the contract. The Offeror also certifies that he will secure from any subcontractor who works on the contract, written certification of the same drug free workplace requirements. False certification or violation by failing to carry out requirements of O.C.G.A. § 50-24-3 may cause suspension, termination of contract, or debarment of such Offeror.

## **CERTIFICATION OF NON-COLLUSION**

By submitting a proposal the Offeror certifies: "that this proposal is made without prior understanding, agreement, or connection with any corporation firm, or person submitting a proposal for the same materials, supplies, or equipment, and is in all respects fair and without collusion or fraud. That collusive pricing is understood to be a violation of State and Federal law and can result in fines, prison sentences, and civil damage awards."

## **AUTHORIZED OFFICIAL**

It is agreed that all conditions of the proposal shall be abided and that the person signing this proposal is authorized to sign the proposal for the Offeror.

## **SOLICITATION TERMINATION**

In any event in which this solicitation is terminated or cancelled, in whole or in part, or all quotes are rejected, there shall be no liability on the part of BCSD for any costs incurred by Offerors or potential Offerors in relation to the solicitation.

## **RIGHTS AND REMEDIES**

The rights and remedies of BCSD provided above shall not be exclusive and are in addition to any other rights and remedies provided by Federal law, Georgia law or under the contract.

## **HOLD HARMLESS PROVISIONS**

The Vendor agrees to protect, defend, indemnify and hold harmless the BCSD and its respective officials, employees, agents and representatives against loss, claim, liability, tort or by statute imposed, charge, cost or expense, including without limitation, attorney's fees which may be incurred with connection with, or in any manner of damage or loss arising from disclosure of proprietary information.

## **I. Scope of Work**

To provide electronic signs for school campuses located in the Baldwin County School District at the following locations:

**Midway Hills Primary School**  
**Grades K-2**  
375 Blandy Road  
Milledgeville, GA. 31061  
Pam Shields

**Lakeview Primary**  
**Grades K-2**  
372 Blandy Road  
Milledgeville, GA 31061  
Tracy Clark

**Midway Hills Academy**  
**Grades 3-5**  
101 Carl Vinson Road  
Milledgeville, GA. 31061  
Antonio Ingram

**Lakeview Academy**  
**Grades 3-5**  
220 N ABC Street  
Milledgeville, GA. 31061  
Shawne Holder

**Oak Hill Middle School**  
356 Blandy Road  
Milledgeville, GA 31061  
Daymond Ray

**Baldwin High School**  
155 Hwy 49 W  
Milledgeville, GA 31061  
Dr. Cloise Williams

The contact person for each location for this project is Bruce Knighton, Director of Facilities. Principal contact information is also included.

**Specifications are Attachment A.**

## **GENERAL REQUIREMENTS**

It is the intent of these specifications to describe the general requirements of Baldwin County School District for the furnishing, delivery, and installation of electronic signs to 6 campuses within the district. Two(2) Primary Schools, two (2) Academies, one (1) Middle and one (1) High School. Quotes must include the new electronic signs and all materials required to properly install signs.

## **I. INSTALLATION**

Quotes should include itemized cost for installation of each sign at each location.

## **II. References**

List as references a minimum of three (3) clients of similar size or larger to BCSD for which a project of similar scope was completed within the last three (3) years. Reference details should include:

- business name, address, website link
- email address and direct phone numbers for contacts.
- a brief description of the services provided shall accompany each reference.
- length of engagement



## Agreement

Agreement between Baldwin County School District and

\_\_\_\_\_  
Name of Individual or Business

Any proposer or service provider submitting a proposal or bid, accepting a Purchase Order, and/or entering into any contract with the Baldwin County School District, by signature and witness herein affirms, attests and declares that they are in compliance with O.C.G.A. 13-10-90.

### Paragraph (a)

\_\_\_\_\_ at \_\_\_\_\_  
Name of Individual or Business Address of Individual or Business

has registered with, is authorized to use, and uses the federal work authorization program.

### Paragraph (b)

The User Identification Number and date of authorization for

\_\_\_\_\_ is:  
Name of Individual or Business

User ID# \_\_\_\_\_ Date of authorization \_\_\_\_\_

### Paragraph (c)

\_\_\_\_\_ will continue to use e-verify for any contracted services performed for the Baldwin County School District.

Paragraph (d)

\_\_\_\_\_ will contract for the physical performance of services only with sub-contractors who present an affidavit to

\_\_\_\_\_ with the same information as required in paragraphs (a), (b,) and (c) of this document.

Hereby attested, affirmed, and declared by below individual signature or signature of authorized agent of:

\_\_\_\_\_  
Name of Individual Business

\_\_\_\_\_  
Printed Name

\_\_\_\_\_  
Signature

\_\_\_\_\_  
Date

Notarized and Witnessed:

\_\_\_\_\_

## Vendor Application

Idwin County School District  
0 ABC Street  
P. Box 1188  
Baldwinville, Georgia 31059

Phone: 478-457-3314  
Fax: 478-457-3360  
Purchasing Director: Judi Battle  
Email: [judi.battle@baldwin.k12.ga.us](mailto:judi.battle@baldwin.k12.ga.us)

### BUSINESS CONTACT INFORMATION

Vendor Application Completed by:

Company Name:

Business Contact Name and Title:

Phone:

Fax:

E-mail:

### BUSINESS INFORMATION

Vendor address:

City:

State:

ZIP Code:

Tax ID (attach W-9):

Is the proprietorship:

Partnership:

Corporation:

Other:

Delivery address:

City:

State:

ZIP Code:

Telephone:

Fax:

E-mail:

### GOODS OR SERVICES PROVIDED

### SCHOOL DISTRICT REFERENCES (OTHER THAN BALDWIN COUNTY SCHOOL DISTRICT)

School:

Address:

City:

State:

ZIP Code:

Phone:

Fax:

E-mail:

Additional Information:

School:

Address:

City:

State:

ZIP Code:

Phone:

Fax:

E-mail:

Additional Information:

School:

Address:

City:

State:

ZIP Code:

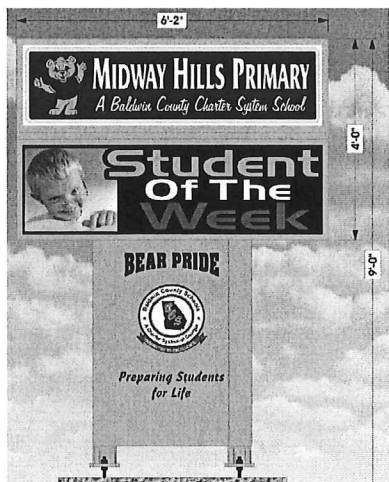
Phone:

Fax:

E-mail:

Additional Information:

### NOTES



# Midway Hills Primary School

## Double Sided Fully Integrated Cabinet

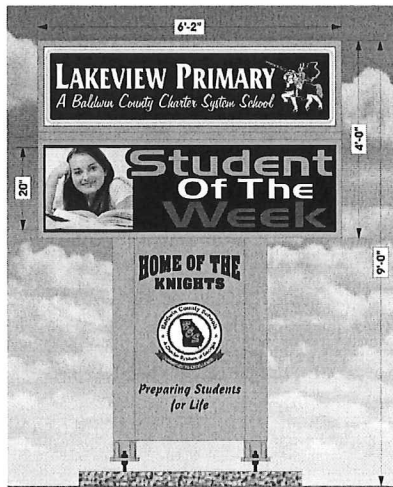
### TECHNICAL SPECIFICATIONS at a Glance

<b>LINE / COLUMN SPACING (Pitch):</b>	.63" ( 16 mm )
<b>PIXEL CONFIGURATION:</b>	1 red, 1 blue, 1 green, LED (Full Color)
<b>MODULE H x W (PIXELS)</b>	16 x 16
<b>MODULE SIZE H x W:</b>	10.1" x 10.1"
<b>LED DISPLAY SIZE:</b>	20.2" X 70.7"
<b>MATRIX: (PIXELS)</b>	32 x 112 (Up to Four ( 4 ) Lines of 4.5" Text)
<b>PROCESSING:</b>	FPGA - Field Programable Gate Array
<b>CALIBRATION:</b>	Full Depth, LED to LED
<b>LED REFRESH RATE</b>	2,400 Hz
<b>LED LIFETIME:</b>	120,000 hours
<b>CONTROLLER:</b>	Nova Star Asynchronous System, 8 GB , 60 fps
<b>DIMMING CAPABILITIES:</b>	256 Levels - Manual or Automatic
<b>CALIBRATED INTENSITY:</b>	13,500 + nits adjustable
<b>HORIZONTAL VIEWING ANGLE:</b>	162°
<b>VERTICAL VIEWING ANGLE:</b>	140°
<b>CABINET DEPTH:</b>	12"
<b>CABINET CONSTRUCTION</b>	Fully Integrated, 100% 6063 T5 Structural Aluminum (No steel)
<b>CABINET &amp; FRAME FINISH:</b>	DuPont Acrylic Powder Coated finish 3.0 - 4.0 mils in thickness
<b>SERVICE ACCESS:</b>	Front w/ gas struts
<b>POLYCARBONATE FACES:</b>	Pan Formed, GE Solar Grade Lexan
<b>GRAPHICS:</b>	3M brand. pressure sensitive, high performance vinyl
<b>COMMUNICATION:</b>	Wi Fi Wireless Communication
<b>LIGHTING SPECIFICATIONS:</b>	UL approved at 120 volts, mounted horizontally in cabinet
<b>PRODUCT COMPLIANCE LISTING:</b>	UL

### SOFTWARE

Does it support all fonts and international languages?	yes
Can messages easily be scheduled?	yes
How far can messages be scheduled in advance?	unlimited
Can text, temp, or time be layers over graphic or video?	yes
Can display be sectioned for multiple message areas within display area?	yes
Can Time & Temp be sized and placed anywhere on the display area?	yes
Can graphics or videos from third party software be uploaded?	yes
Can software handle multiple schedule entries?	yes
Can message schedule be exported ?	yes

Up-loadable file formats include, but are not limited to: **TXT, HTM, HEML, MHT, EXCEL, WORD, DOC, RTF, BMP, JPG, GIF, CPX, WMF, ICO, AVI, MPG, MPEG, WMV, ASF, VCD, DAT, SWF, & RM.**



# Lakeview Primary School

## Double Sided Fully Integrated Cabinet

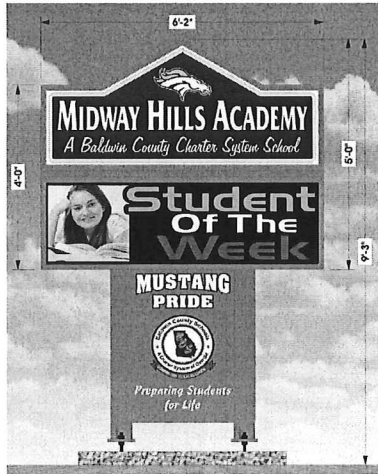
### TECHNICAL SPECIFICATIONS at a Glance

<b>LINE / COLUMN SPACING (Pitch):</b>	.63" ( 16 mm )
<b>PIXEL CONFIGURATION:</b>	1 red, 1 blue, 1 green, LED (Full Color)
<b>MODULE H x W (PIXELS)</b>	16 x 16
<b>MODULE SIZE H x W:</b>	10.1" x 10.1"
<b>LED DISPLAY SIZE:</b>	20.2" X 70.7"
<b>MATRIX: (PIXELS)</b>	32 x 112 (Up to Four ( 4 ) Lines of 4.5" Text)
<b>PROCESSING:</b>	FPGA - Field Programable Gate Array
<b>CALIBRATION:</b>	Full Depth, LED to LED
<b>LED REFRESH RATE</b>	2,400 Hz
<b>LED LIFETIME:</b>	120,000 hours
<b>CONTROLLER:</b>	Nova Star Asynchronous System, 8 GB , 60 fps
<b>DIMMING CAPABILITIES:</b>	256 Levels - Manual or Automatic
<b>CALIBRATED INTENSITY:</b>	13,500 + nits adjustable
<b>HORIZONTAL VIEWING ANGLE:</b>	162°
<b>VERTICAL VIEWING ANGLE:</b>	140°
<b>CABINET DEPTH:</b>	12"
<b>CABINET CONSTRUCTION</b>	Fully Integrated, 100% 6063 T5 Structural Aluminum (No steel)
<b>CABINET &amp; FRAME FINISH:</b>	DuPont Acrylic Powder Coated finish 3.0 - 4.0 mils in thickness
<b>SERVICE ACCESS:</b>	Front w/ gas struts
<b>POLYCARBONATE FACES:</b>	Pan Formed, GE Solar Grade Lexan
<b>GRAPHICS:</b>	3M brand. pressure sensitive, high performance vinyl
<b>COMMUNICATION:</b>	Wi Fi Wireless Communication
<b>LIGHTING SPECIFICATIONS:</b>	UL approved at 120 volts, mounted horizontally in cabinet
<b>PRODUCT COMPLIANCE LISTING:</b>	UL

### SOFTWARE

Does it support all fonts and international languages?	yes
Can messages easily be scheduled?	yes
How far can messages be scheduled in advance?	unlimited
Can text, temp, or time be layers over graphic or video?	yes
Can display be sectioned for multiple message areas within display area?	yes
Can Time & Temp be sized and placed anywhere on the display area?	yes
Can graphics or videos from third party software be uploaded?	yes
Can software handle multiple schedule entries?	yes
Can message schedule be exported ?	yes

Up-loadable file formats include, but are not limited to: **TXT, HTM, HEML, MHT, EXCEL, WORD, DOC, RTF, BMP, JPG, GIF, CPX, WMF, ICO, AVI, MPG, MPEG, WMV, ASF, VCD, DAT, SWF, & RM.**



# Midway Hills Academy w/ Peak Top Cabinet

## Double Sided Fully Integrated Cabinet

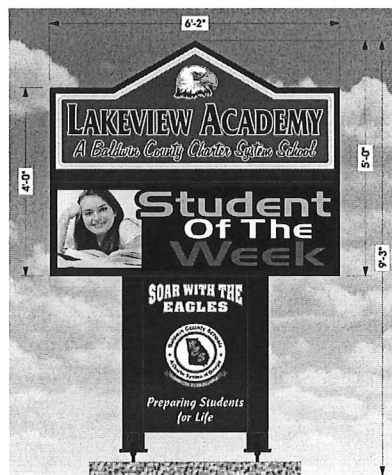
### TECHNICAL SPECIFICATIONS at a Glance

<b>LINE / COLUMN SPACING (Pitch):</b>	.63" ( 16 mm )
<b>PIXEL CONFIGURATION:</b>	1 red, 1 blue, 1 green, LED (Full Color)
<b>MODULE H x W (PIXELS)</b>	16 x 16
<b>MODULE SIZE H x W:</b>	10.1" x 10.1"
<b>LED DISPLAY SIZE:</b>	20.2" X 70.7"
<b>MATRIX: (PIXELS)</b>	32 x 112 (Up to Four ( 4 ) Lines of 4.5" Text)
<b>PROCESSING:</b>	FPGA - Field Programable Gate Array
<b>CALIBRATION:</b>	Full Depth, LED to LED
<b>LED REFRESH RATE</b>	2,400 Hz
<b>LED LIFETIME:</b>	120,000 hours
<b>CONTROLLER:</b>	Nova Star Asynchronous System, 8 GB , 60 fps
<b>DIMMING CAPABILITIES:</b>	256 Levels - Manual or Automatic
<b>CALIBRATED INTENSITY:</b>	13,500 + nits adjustable
<b>HORIZONTAL VIEWING ANGLE:</b>	162°
<b>VERTICAL VIEWING ANGLE:</b>	140°
<b>CABINET DEPTH:</b>	12"
<b>CABINET CONSTRUCTION</b>	Fully Integrated, 100% 6063 T5 Structural Aluminum (No steel)
<b>CABINET &amp; FRAME FINISH:</b>	DuPont Acrylic Powder Coated finish 3.0 - 4.0 mils in thickness
<b>SERVICE ACCESS:</b>	Front w/ gas struts
<b>POLYCARBONATE FACES:</b>	Pan Formed, GE Solar Grade Lexan
<b>GRAPHICS:</b>	3M brand. pressure sensitive, high performance vinyl
<b>COMMUNICATION:</b>	Wi Fi Wireless Communication
<b>LIGHTING SPECIFICATIONS:</b>	UL approved at 120 volts, mounted horizontally in cabinet
<b>PRODUCT COMPLIANCE LISTING:</b>	UL

### SOFTWARE

Does it support all fonts and international languages?	yes
Can messages easily be scheduled?	yes
How far can messages be scheduled in advance?	unlimited
Can text, temp, or time be layers over graphic or video?	yes
Can display be sectioned for multiple message areas within display area?	yes
Can Time & Temp be sized and placed anywhere on the display area?	yes
Can graphics or videos from third party software be uploaded?	yes
Can software handle multiple schedule entries?	yes
Can message schedule be exported ?	yes

Up-loadable file formats include, but are not limited to: **TXT, HTM, HEML, MHT, EXCEL, WORD, DOC, RTF, BMP, JPG, GIF, CPX, WMF, ICO, AVI, MPG, MPEG, WMV, ASF, VCD, DAT, SWF, & RM.**



# Lakeview Academy w/ Peak Top Cabinet

## Double Sided Fully Integrated Cabinet

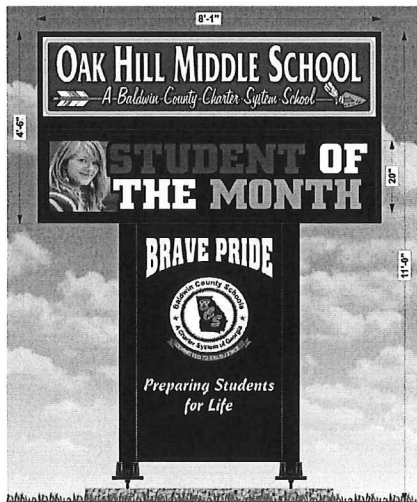
### TECHNICAL SPECIFICATIONS at a Glance

<b>LINE / COLUMN SPACING (Pitch):</b>	.63" ( 16 mm )
<b>PIXEL CONFIGURATION:</b>	1 red, 1 blue, 1 green, LED (Full Color)
<b>MODULE H x W (PIXELS)</b>	16 x 16
<b>MODULE SIZE H x W:</b>	10.1" x 10.1"
<b>LED DISPLAY SIZE:</b>	20.2" X 70.7"
<b>MATRIX: (PIXELS)</b>	32 x 112 (Up to Four ( 4 ) Lines of 4.5" Text)
<b>PROCESSING:</b>	FPGA - Field Programable Gate Array
<b>CALIBRATION:</b>	Full Depth, LED to LED
<b>LED REFRESH RATE</b>	2,400 Hz
<b>LED LIFETIME:</b>	120,000 hours
<b>CONTROLLER:</b>	Nova Star Asynchronous System, 8 GB , 60 fps
<b>DIMMING CAPABILITIES:</b>	256 Levels - Manual or Automatic
<b>CALIBRATED INTENSITY:</b>	13,500 + nits adjustable
<b>HORIZONTAL VIEWING ANGLE:</b>	162°
<b>VERTICAL VIEWING ANGLE:</b>	140°
<b>CABINET DEPTH:</b>	12"
<b>CABINET CONSTRUCTION</b>	Fully Integrated, 100% 6063 T5 Structural Aluminum (No steel)
<b>CABINET &amp; FRAME FINISH:</b>	DuPont Acrylic Powder Coated finish 3.0 - 4.0 mils in thickness
<b>SERVICE ACCESS:</b>	Front w/ gas struts
<b>POLYCARBONATE FACES:</b>	Pan Formed, GE Solar Grade Lexan
<b>GRAPHICS:</b>	3M brand. pressure sensitive, high performance vinyl
<b>COMMUNICATION:</b>	Wi Fi Wireless Communication
<b>LIGHTING SPECIFICATIONS:</b>	UL approved at 120 volts, mounted horizontally in cabinet
<b>PRODUCT COMPLIANCE LISTING:</b>	UL

### SOFTWARE

Does it support all fonts and international languages?	yes
Can messages easily be scheduled?	yes
How far can messages be scheduled in advance?	unlimited
Can text, temp, or time be layers over graphic or video?	yes
Can display be sectioned for multiple message areas within display area?	yes
Can Time & Temp be sized and placed anywhere on the display area?	yes
Can graphics or videos from third party software be uploaded?	yes
Can software handle multiple schedule entries?	yes
Can message schedule be exported ?	yes

Up-loadable file formats include, but are not limited to: **TXT, HTM, HEML, MHT, EXCEL, WORD, DOC, RTF, BMP, JPG, GIF, CPX, WMF, ICO, AVI, MPG, MPEG, WMV, ASF, VCD, DAT, SWF, & RM.**



# Oak Hill Middle School

## Double Sided Fully Integrated Cabinet

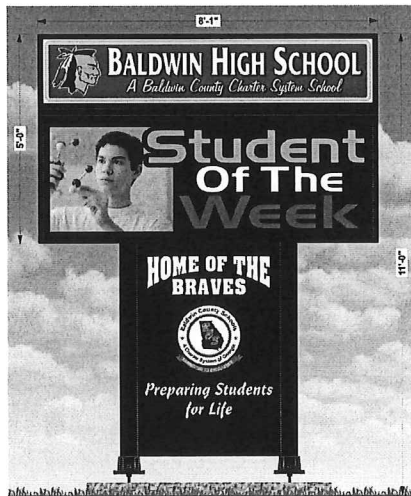
### TECHNICAL SPECIFICATIONS at a Glance

<b>LINE / COLUMN SPACING (Pitch):</b>	.63" ( 16 mm )
<b>PIXEL CONFIGURATION:</b>	1 red, 1 blue, 1 green, LED (Full Color)
<b>MODULE H x W (PIXELS)</b>	16 x 16
<b>MODULE SIZE H x W:</b>	10.1" x 10.1"
<b>LED DISPLAY SIZE:</b>	20.2" X 90.9"
<b>MATRIX: (PIXELS)</b>	32 x 144 (Up to Four ( 4 ) Lines of 4.5" Text)
<b>PROCESSING:</b>	FPGA - Field Programable Gate Array
<b>CALIBRATION:</b>	Full Depth, LED to LED
<b>LED REFRESH RATE</b>	2,400 Hz
<b>LED LIFETIME:</b>	120,000 hours
<b>CONTROLLER:</b>	Nova Star Asynchronous System, 8 GB , 60 fps
<b>DIMMING CAPABILITIES:</b>	256 Levels - Manual or Automatic
<b>CALIBRATED INTENSITY:</b>	13,500 + nits adjustable
<b>HORIZONTAL VIEWING ANGLE:</b>	162°
<b>VERTICAL VIEWING ANGLE:</b>	140°
<b>CABINET DEPTH:</b>	12"
<b>CABINET CONSTRUCTION</b>	Fully Integrated, 100% 6063 T5 Structural Aluminum (No steel)
<b>CABINET &amp; FRAME FINISH:</b>	DuPont Acrylic Powder Coated finish 3.0 - 4.0 mils in thickness
<b>SERVICE ACCESS:</b>	Front w/ gas struts
<b>POLYCARBONATE FACES:</b>	Pan Formed, GE Solar Grade Lexan
<b>GRAPHICS:</b>	3M brand. pressure sensitive, high performance vinyl
<b>COMMUNICATION:</b>	Wi Fi Wireless Communication
<b>LIGHTING SPECIFICATIONS:</b>	UL approved at 120 volts, mounted horizontally in cabinet
<b>PRODUCT COMPLIANCE LISTING:</b>	UL

### SOFTWARE

Does it support all fonts and international languages?	yes
Can messages easily be scheduled?	yes
How far can messages be scheduled in advance?	unlimited
Can text, temp, or time be layers over graphic or video?	yes
Can display be sectioned for multiple message areas within display area?	yes
Can Time & Temp be sized and placed anywhere on the display area?	yes
Can graphics or videos from third party software be uploaded?	yes
Can software handle multiple schedule entries?	yes
Can message schedule be exported ?	yes

Up-loadable file formats include, but are not limited to: **TXT, HTM, HEML, MHT, EXCEL, WORD, DOC, RTF, BMP, JPG, GIF, CPX, WMF, ICO, AVI, MPG, MPEG, WMV, ASF, VCD, DAT, SWF, & RM.**



# Baldwin High School Double Sided Fully Integrated Cabinet TECHNICAL SPECIFICATIONS at a Glance

<b>LINE / COLUMN SPACING (Pitch):</b>	.63" ( 16 mm )
<b>PIXEL CONFIGURATION:</b>	1 red, 1 blue, 1 green, LED (Full Color)
<b>MODULE H x W (PIXELS)</b>	16 x 16
<b>MODULE SIZE H x W:</b>	10.1" x 10.1"
<b>LED DISPLAY SIZE:</b>	30.3" X 90.9"
<b>MATRIX: (PIXELS)</b>	48 x 144 (Up to Six ( 6 ) Lines of 4.5" Text)
<b>PROCESSING:</b>	FPGA - Field Programable Gate Array
<b>CALIBRATION:</b>	Full Depth, LED to LED
<b>LED REFRESH RATE</b>	2,400 Hz
<b>LED LIFETIME:</b>	120,000 hours
<b>CONTROLLER:</b>	Nova Star Asynchronous System, 8 GB , 60 fps
<b>DIMMING CAPABILITIES:</b>	256 Levels - Manual or Automatic
<b>CALIBRATED INTENSITY:</b>	13,500 + nits adjustable
<b>HORIZONTAL VIEWING ANGLE:</b>	162°
<b>VERTICAL VIEWING ANGLE:</b>	140°
<b>CABINET DEPTH:</b>	12"
<b>CABINET CONSTRUCTION</b>	Fully Integrated, 100% 6063 T5 Structural Aluminum (No steel)
<b>CABINET &amp; FRAME FINISH:</b>	DuPont Acrylic Powder Coated finish 3.0 - 4.0 mils in thickness
<b>SERVICE ACCESS:</b>	Front w/ gas struts
<b>POLYCARBONATE FACES:</b>	Pan Formed, GE Solar Grade Lexan
<b>GRAPHICS:</b>	3M brand. pressure sensitive, high performance vinyl
<b>COMMUNICATION:</b>	Wi Fi Wireless Communication
<b>LIGHTING SPECIFICATIONS:</b>	UL approved at 120 volts, mounted horizontally in cabinet
<b>PRODUCT COMPLIANCE LISTING:</b>	UL

## SOFTWARE

Does it support all fonts and international languages?	yes
Can messages easily be scheduled?	yes
How far can messages be scheduled in advance?	unlimited
Can text, temp, or time be layers over graphic or video?	yes
Can display be sectioned for multiple message areas within display area?	yes
Can Time & Temp be sized and placed anywhere on the display area?	yes
Can graphics or videos from third party software be uploaded?	yes
Can software handle multiple schedule entries?	yes
Can message schedule be exported ?	yes

Up-loadable file formats include, but are not limited to: **TXT, HTM, HEML, MHT, EXCEL, WORD, DOC, RTF, BMP, JPG, GIF, CPX, WMF, ICO, AVI, MPG, MPEG, WMV, ASF, VCD, DAT, SWF, & RM.**