

LEGEND

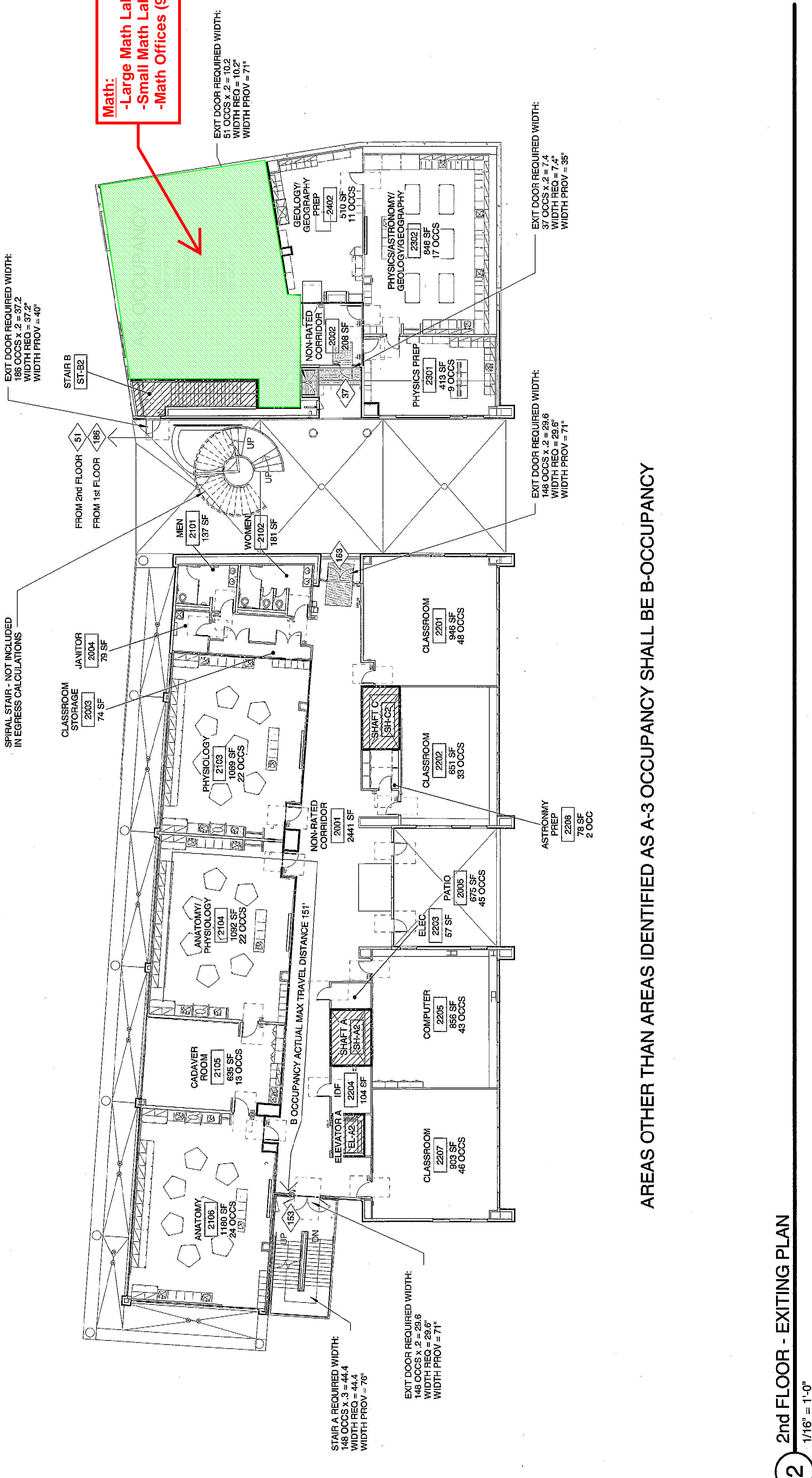
Room Name	Room Name
Room Area	Room Area
No. of Occupants	No. of Occupants
EXITING OCCUPANTS	EXITING OCCUPANTS
EXIT PATH OF TRAVEL	EXIT PATH OF TRAVEL
A-3 OCCUPANCY	A-3 OCCUPANCY
2-HR RATED ENCLOSED SHAFT OR ENCLOSED EXIT STAIR	2-HR RATED ENCLOSED SHAFT OR ENCLOSED EXIT STAIR
1-HR WALL	1-HR WALL
2-HR WALL	2-HR WALL

GENERAL NOTE:
1. SEE PROJECT REGULATORY DATA ON SHEET 60.3.4 FOR ACCESS MAXIMUM TRAVEL DISTANCE ALLOWED.

AGENCY REVIEW
REGISTRATION NO. 01-113324
DIVISION OF THE STATE ARCHITECT
OFFICE OF REGULATION SERVICES
APPL. # 01-113324
AC [Signature] PLS. [Signature] SS [Signature]
DATE NOV 22 2013

PROJECT: PERALTA COMMUNITY COLLEGE DISTRICT
MERRITT COLLEGE - CENTER FOR SCIENCE AND ALLIED HEALTH
DRAWING TITLE: 1st & 2nd FLOORS - EXITING PLANS
NO. DATE ISSUE
PROJECT NO. 2011-0191
CHECKED BY: KJD
DATE: 11/15/2013
DRAWN BY: BR
DRAWING NO.: G0.3.1

Floor Plan issued as part of the Barbara Lee Building S TI project AOR Services RFP



Liberal Arts:
-Review Coordinator (90 ASF)
-Adjunct Office (120 ASF)
-Dean Office (120 ASF)
-Dean Staff Asst. (90 ASF)
-Faculty Offices (90 ASF x 3)
-Office Service Area (370 ASF)

-Microscopy Level 1 (907 ASF)
-Microscopy Level 2 (633 ASF)
-Microscopy Histology (319 ASF)
-General Ed Classroom (960 ASF)

CIS Program:
-Large Computer Lab (1,080 ASF)
-Small Computer Lab (709 ASF)
-Office (90 ASF)

EXITING ANALYSIS - FLOORS 1 - 2

NO.	ROOM NAME	AREA	LOAD FACTOR	No. OCCS	No. EXITS REQ'D	EXIT WIDTH REQ'D	EXIT WIDTH PROV
1002	NON-RATED CORRIDOR	2297 SF	0	0			
1103	MPF CONTROL	265 SF	0	0			
1104	STAGING	915 SF	1.00	4 OCCS	1	0.2	0.8
1106	PLUMBING	271 SF	500	1 OCC	1	0.2	0.2
1107	PLUMBING	177 SF	500	1 OCC	1	0.2	0.2
1108	CUSTodian	100 SF	2 OCCS	1	0.2	0.1	0.2
1111	WOMEN	498 SF	0	0			
1112	JANITOR	40 SF	0	0			
1113	ASTRONOMY PREP	40 SF	0	0			
1201	MICROSCOPY LEVEL 1	807 SF	50	18 OCCS	2	0.2	0.2
1202	MICROSCOPY CONFOCAL	867 SF	50	18 OCCS	1	0.2	0.2
1203	MICROSCOPY TIC	294 SF	50	7 OCCS	1	0.2	1.4
1204	MICROSCOPY HISTOLOGY	319 SF	50	10 OCCS	1	0.2	0.2
1205	MICROSCOPY HISTOLOGY	319 SF	50	10 OCCS	1	0.2	0.2
1207	SHELLED SPACE FOR GENOMICS	1280 SF	50	26 OCCS	1	0.2	0.2
1208	TEACHING LAB	250 SF	20	17 OCCS	1	0.2	0.2
1209	MATH 2	145 SF	20	12 OCCS	1	0.2	0.2
1210	SHELLED SPACE FOR COMPUTER	870 SF	20	40 OCCS	2	0.2	11.8
1211	SHELLED SPACE FOR COMPUTER	870 SF	20	40 OCCS	1	0.2	8.8
2001	NON-RATED CORRIDOR	2441 SF	0	0			
2002	NON-RATED CORRIDOR	74 SF	0	0			
2003	CLASSROOM STORAGE	74 SF	0	0			
2004	JANITOR	79 SF	0	0			
2005	PATIO	675 SF	15	45 OCCS	1	0.2	9
2006	WOMEN	181 SF	0	0			
2102	PHYSIOLOGY	1099 SF	50	22 OCCS	1	0.2	4.4
2104	ANATOMY/PHYSIOLOGY	1099 SF	50	22 OCCS	1	0.2	4.4
2105	ADJUNCT ROOM	133 SF	50	13 OCCS	1	0.2	2.6
2106	CLASSROOM	944 SF	20	48 OCCS	1	0.2	36.8
2202	CLASSROOM	661 SF	20	33 OCCS	1	0.2	6.6
2205	COMPUTER	866 SF	20	43 OCCS	1	0.2	8.6
2206	COMPUTER	866 SF	20	43 OCCS	1	0.2	8.6
2208	ASTRONOMY PREP	76 SF	50	2 OCCS	2	0.2	0.4
2209	ASTRONOMY PREP	413 SF	50	17 OCCS	1	0.2	1.8
2209	ASTRONOMY PREP	413 SF	50	17 OCCS	1	0.2	3.4
2209	ASTRONOMY PREP	413 SF	50	17 OCCS	1	0.2	3.4
2301	SHELLED SPACE FOR TIERED	2028 SF	20	102 OCCS	2	0.2	20.4
2301	CLASSROOM 100	510 SF	50	11 OCCS	1	0.2	2.2
2402	GEOLOGY/GEOGRAPHY PREP	87 SF	0	0			
2403	ELEVATOR A	87 SF	0	0			
2403	ELEVATOR B	87 SF	0	0			
TOTAL				379 OCC	2		
	1st FLOOR			379 OCC	2		
	1st FLOOR MINUS ROOMS 1104, 1106 & 1107			379 OCC	2		
	2nd FLOOR			495 OCC	2		

1 1st FLOOR - EXITING PLAN
1/16" = 1'-0"

2 2nd FLOOR - EXITING PLAN
1/16" = 1'-0"

AREAS OTHER THAN AREAS IDENTIFIED AS A-3 OCCUPANCY SHALL BE B-OCCUPANCY

AREAS OTHER THAN AREAS IDENTIFIED AS A-3 OCCUPANCY SHALL BE B-OCCUPANCY

AREAS OTHER THAN AREAS IDENTIFIED AS A-3 OCCUPANCY SHALL BE B-OCCUPANCY

