



St. Johns River Water Management District

Michael A. Register, P.E., Executive Director

525 Community College Parkway S.E. • Palm Bay, FL 32909 • 321-984-4940 • www.sjrwmd.com

DATE: December 15, 2023
TO: Prospective Respondents
FROM: Amy Lucey, Procurement Specialist
SUBJECT: Addendum #2 to Quote Request 39350 - S-161A Side Gate Automation

As a result of inquiries regarding the above referenced solicitation, the following clarifications/changes are provided for your information.

Q1: Shop drawings of the existing slide gates at S-161A? Any available as-builts of the S-161A structure highlighting the existing slide gates and their mounting configuration to the structure?

A1: All applicable construction drawings are attached.

Q2: Limatorque's proposed actuator mounting configuration?

A2: Respondent should contact Limatorque for this information; no design information has been solicited or provided from Limatorque.

Q3: The SJRWMD's contact at Limatorque for this project?

A3: The District does not have any contact information for Limatorque.

Q4: Is there a construction drawing for floor stand dimensions?

A4: All applicable construction drawings are attached.

Q5: What is gate stem cover height?

A5: The gate stem cover height is 54 inches.

Q6: Stem nut matching data is needed.

A6: All applicable construction drawings are attached.

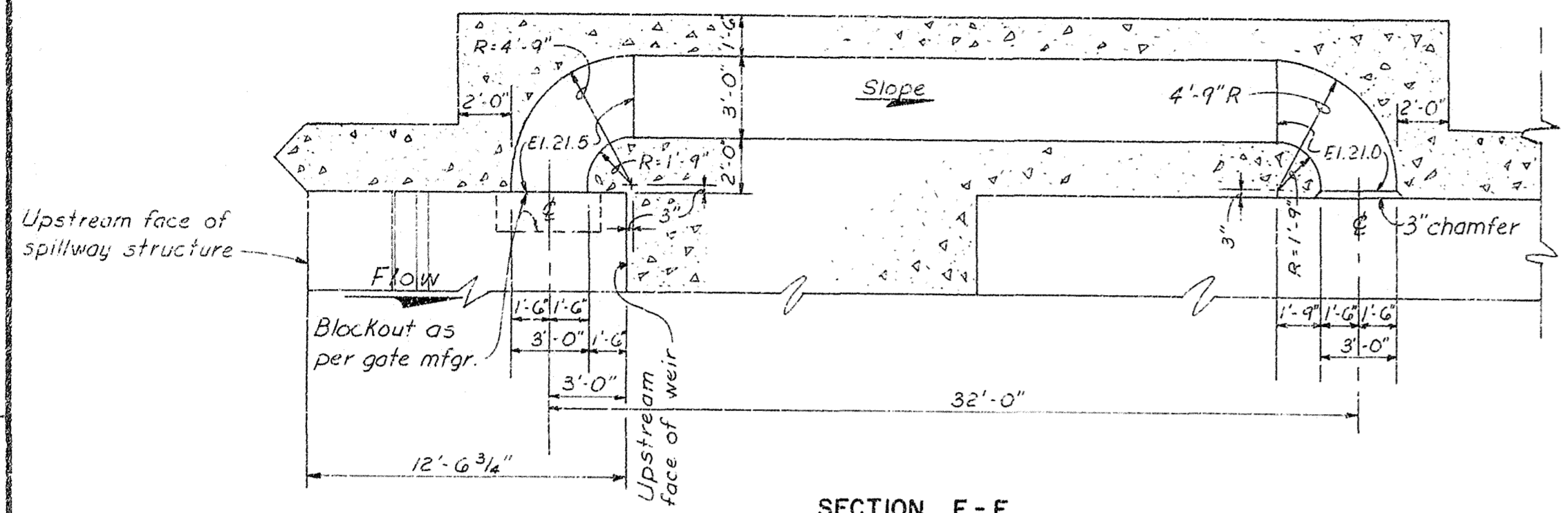
Should additional information be required, a site visit can be scheduled by emailing Amy Lucey (alucey@sjrwmd.com) AND Wendy Cox (wcox@sjrwmd.com).

NOTE: The Quote Due Date remains at 3:00 pm, Wednesday, January 3, 2024.

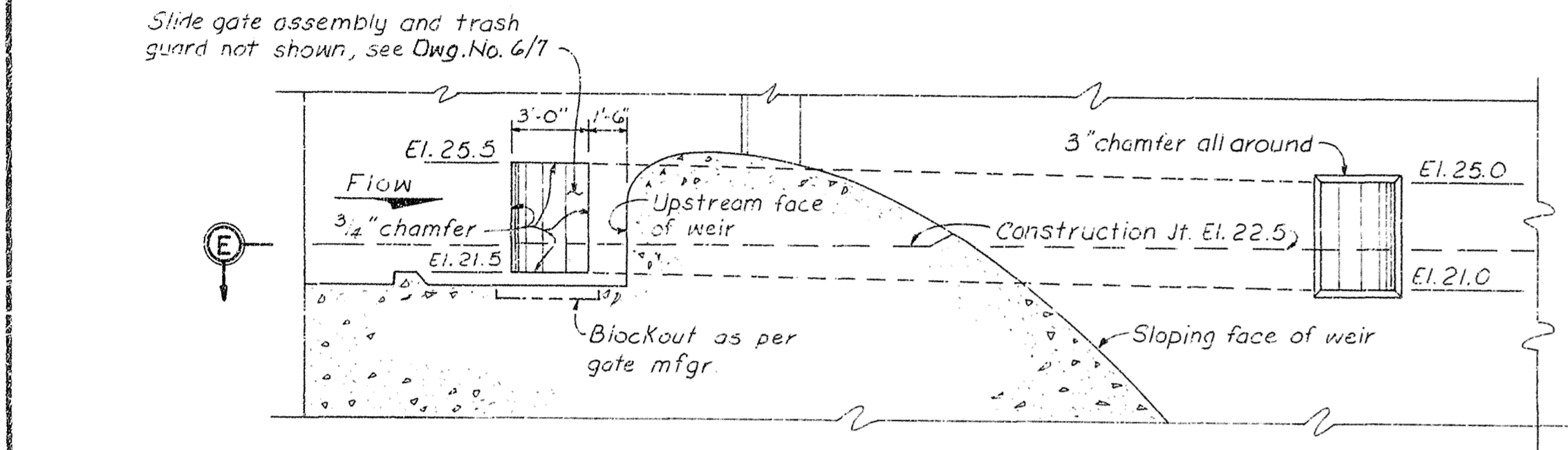
Please acknowledge receipt of this Addendum on EXHIBIT 2 - COST SCHEDULE FORM provided in the quote package.

SAFETY ON THIS JOB
DEPENDS ON YOU

REVISIONS					
NO.	SYM.	ZONE	DESCRIPTION	DATE	APPROVED

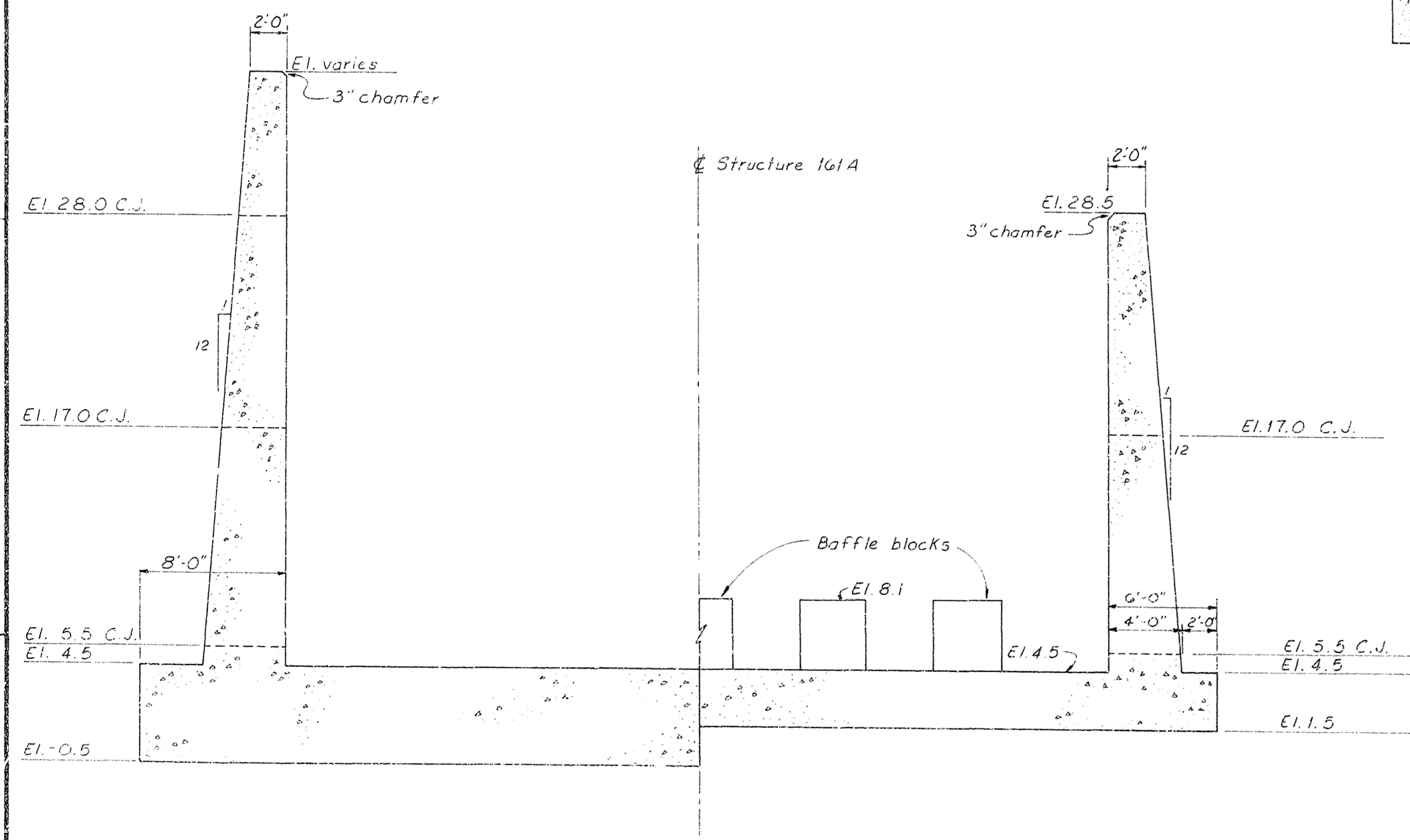


SECTION E-E
SCALE: "A"

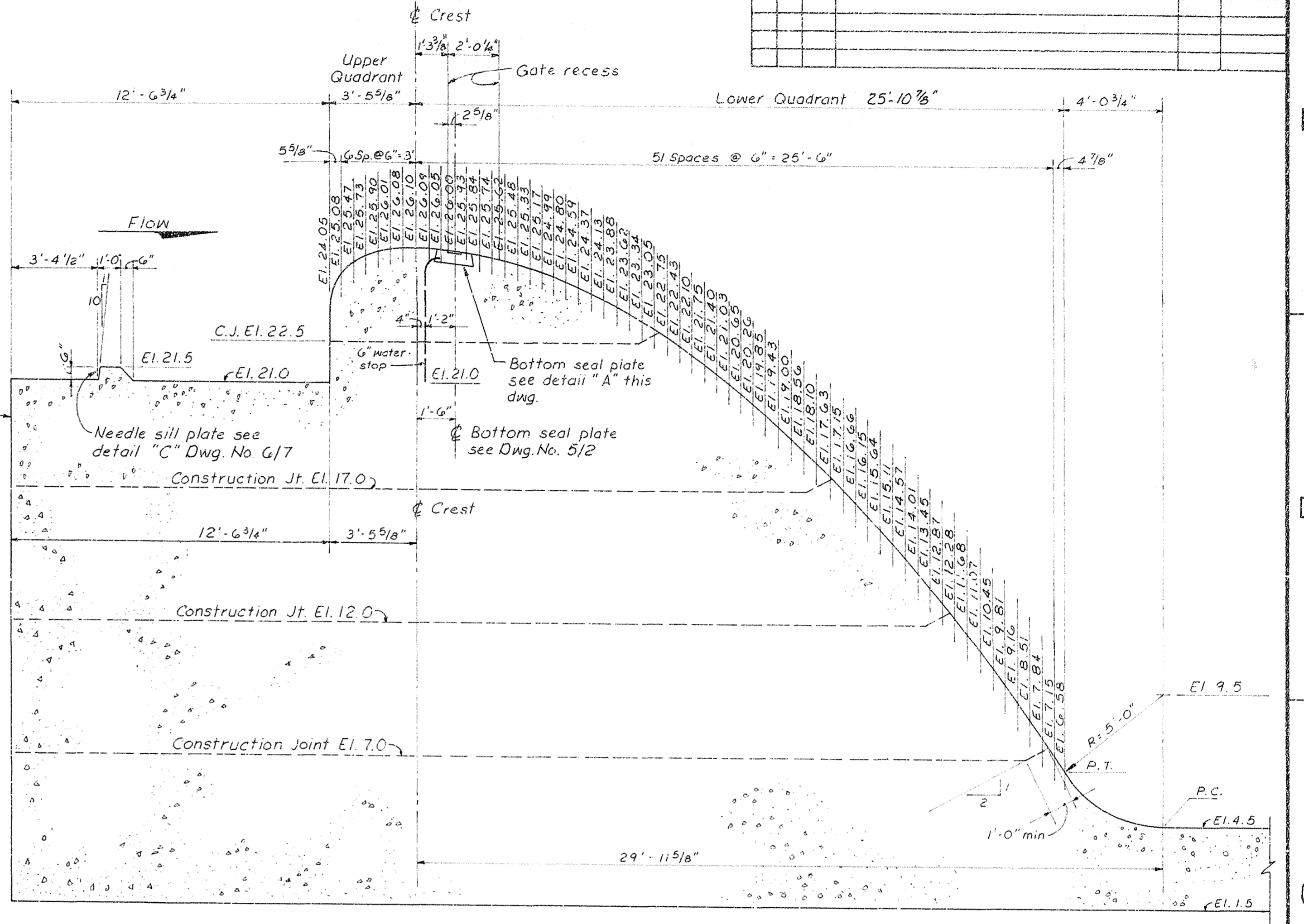


ELEVATION
SCALE: "A"

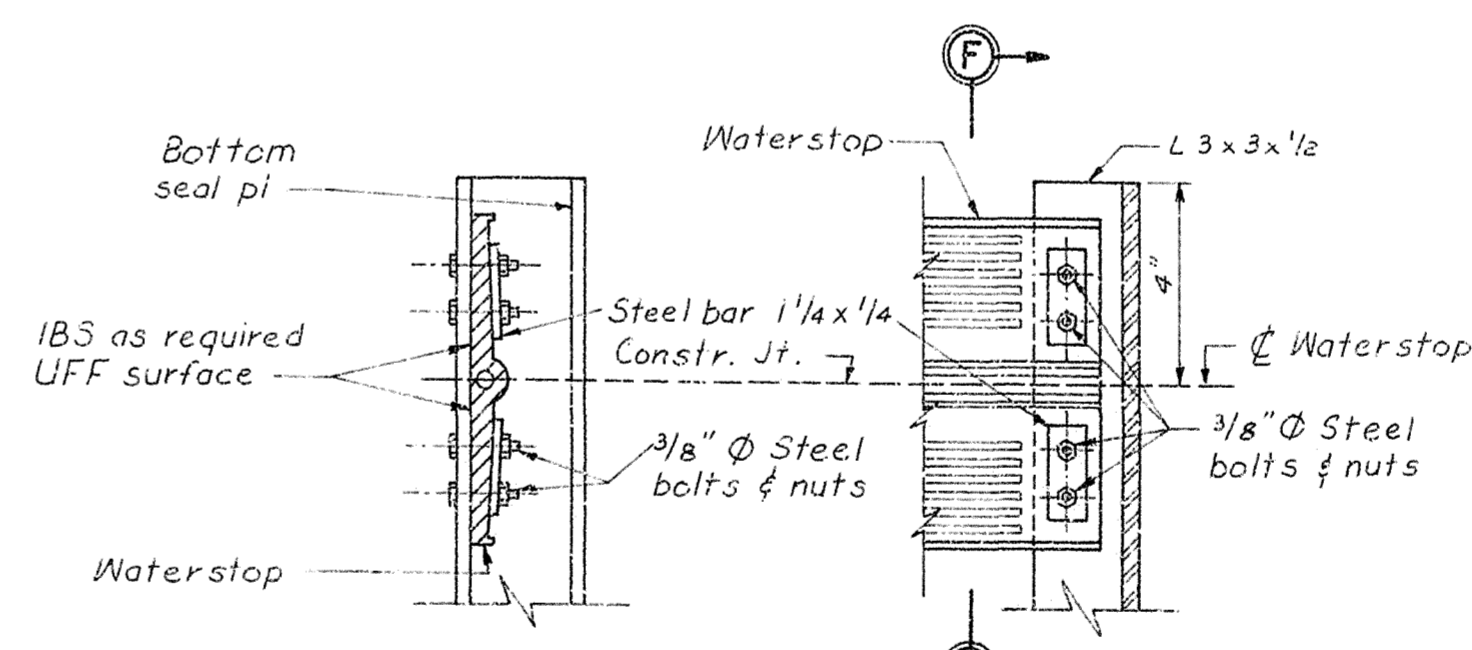
WALL CULVERT DETAILS



SECTION D-D
SCALE: "A"



WEIR DETAIL
SCALE: "B"



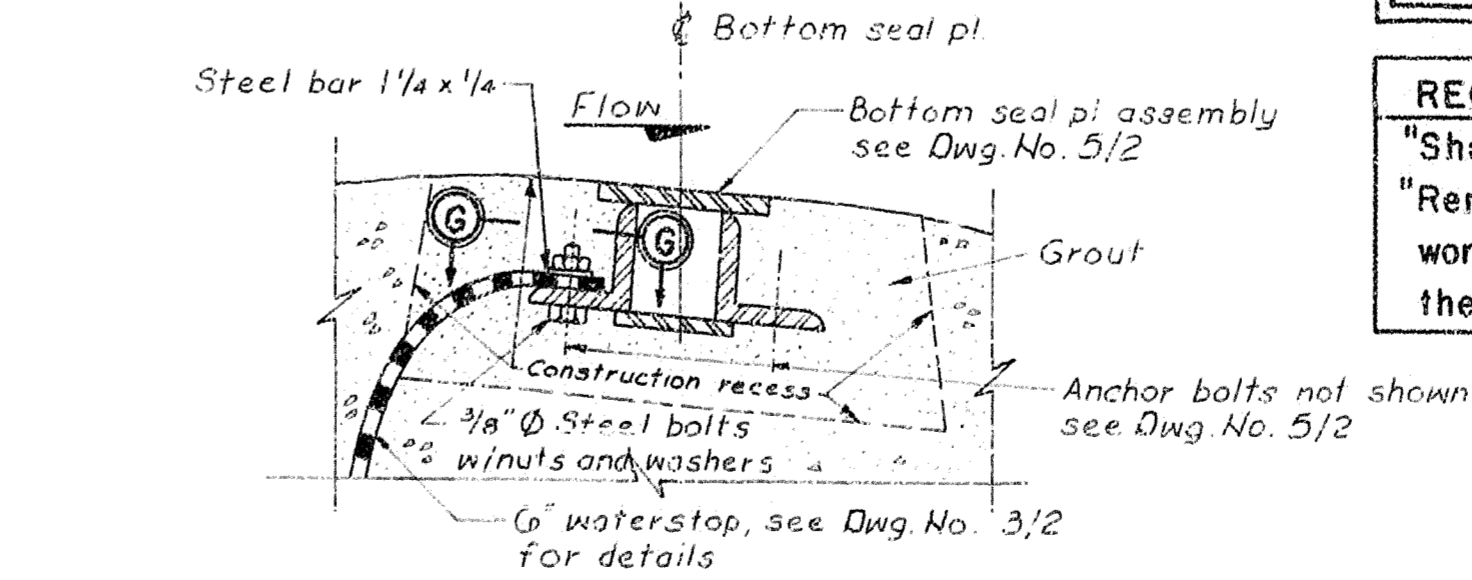
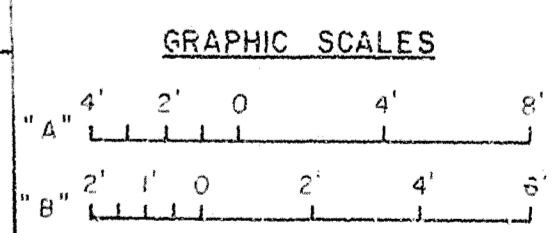
SECTION F-F

SECTION G-G

- Notes:
1. Refer to Dwg. No. 3/1 for notes.
 2. For location of section D-D see Dwg. No. 3/1
 3. For location of weir shown on this dwg. see Dwg. Nos. 3/2 and 3/3
 4. For location of wall culverts, see Dwg. Nos. 3/1 and 3/2

AS-BUILT

RECORD DRAWING NOTE
"Shall be," "Provide," "Install," "Remove," etc., indicates work was accomplished under the contract



ELEVATION
NOT TO SCALE

Note: Polyvinylchloride waterstop show in above views but rubber waterstop may be used in lieu thereof. See waterstop detail, Dwg. No. 3/2

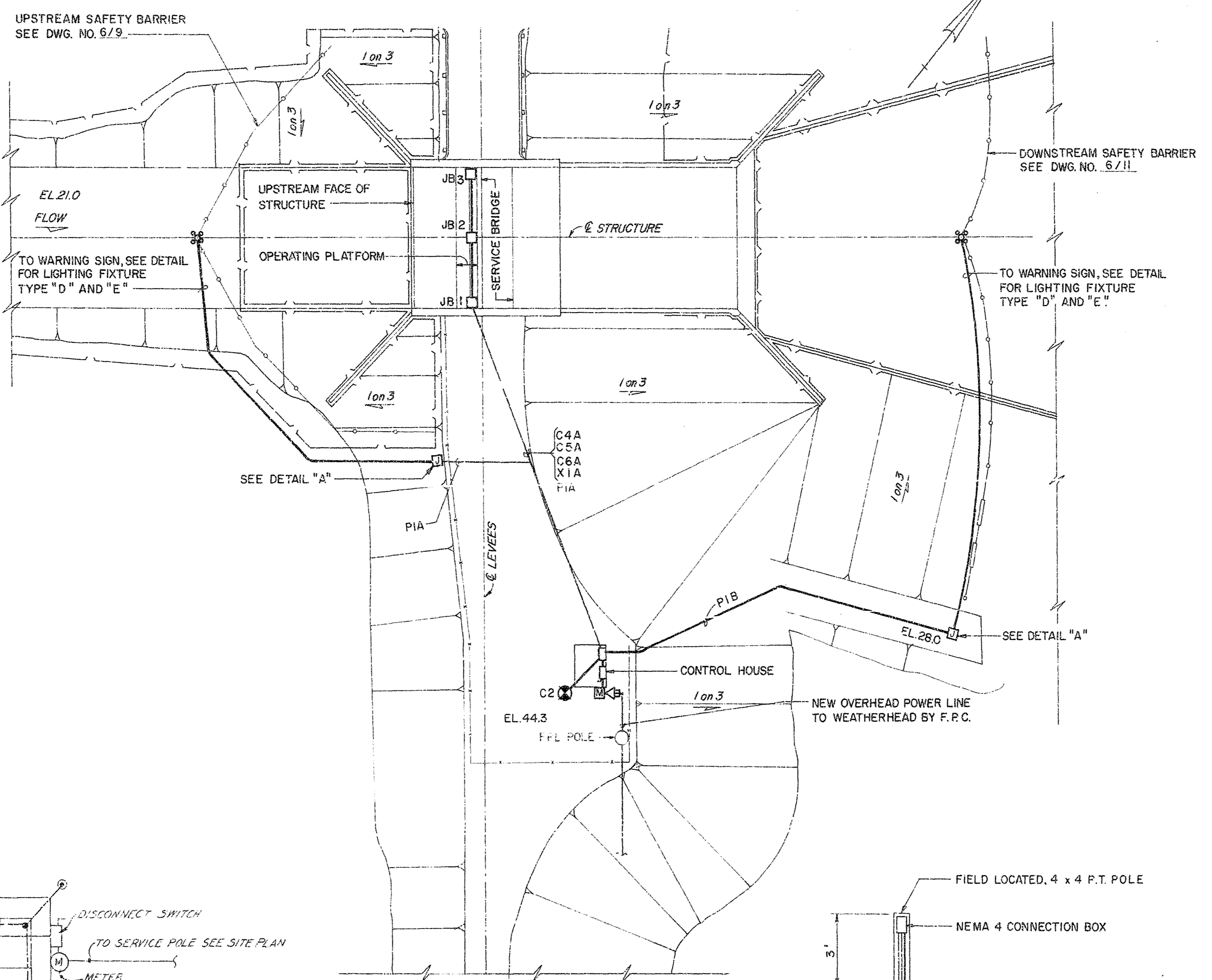
For location. See weir detail this dwg. & Dwg. Nos. 3/2 and 3/3.

DEPARTMENT OF THE ARMY
JACKSONVILLE DISTRICT, CORPS OF ENGINEERS
JACKSONVILLE, FLORIDA
CENTRAL AND SOUTHERN FLORIDA PROJECT
UPPER ST. JOHNS RIVER BASIN
STRUCTURE 1G1A AND TIEBACK LEVEE
CONCRETE
SECTIONS AND DETAILS

SCALE: AS SHOWN DATED: JAN-1997 SHEET: 17

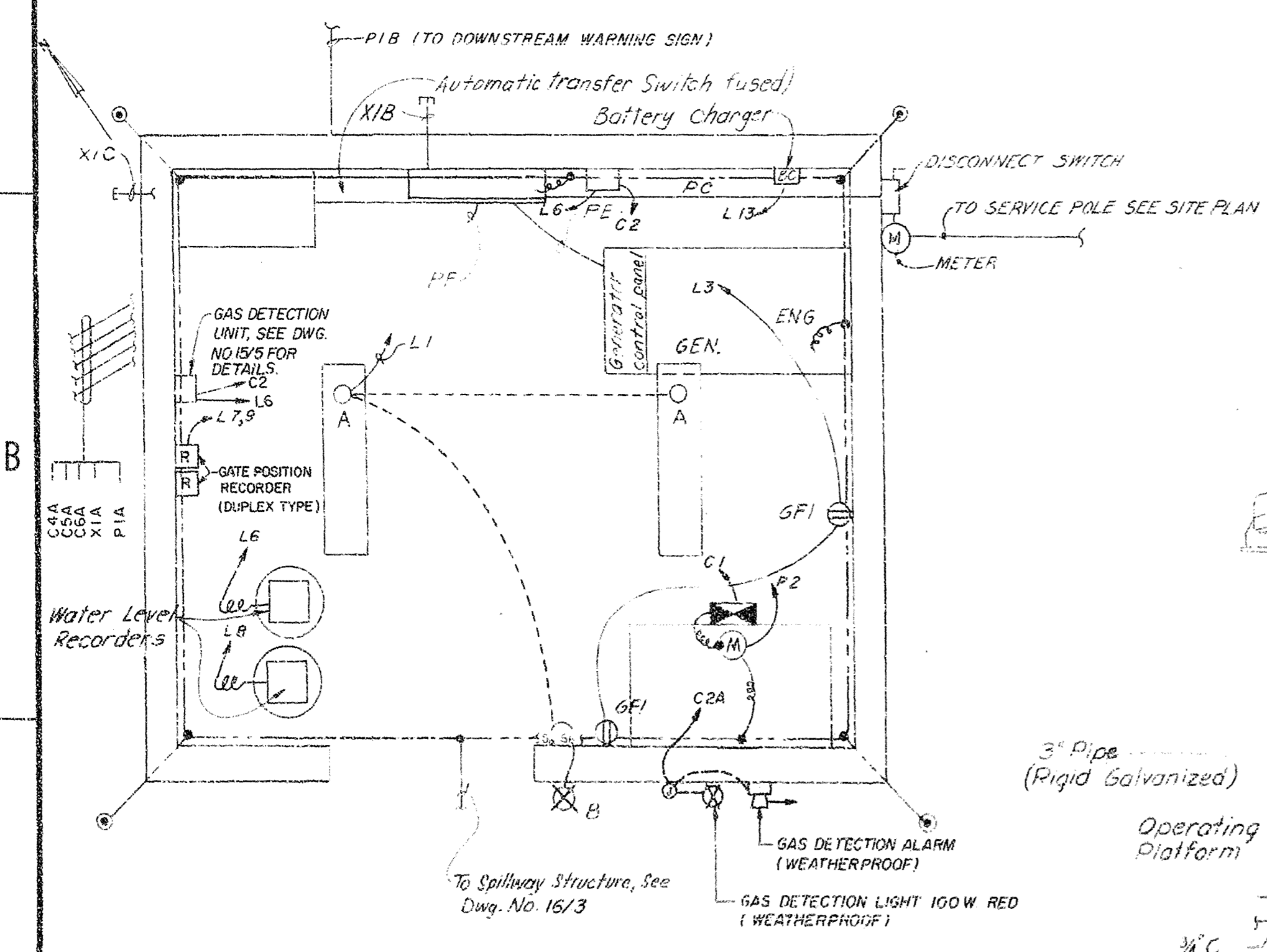
POWER LINE NOTES:

- 1A. CONTRACTOR SHALL COORDINATE NEW POWER LINE WORK WITH FLORIDA POWER CORPORATION. (CONTACT PERSON-MR. GLEN HOFFMAN, PHONE NO. (813) 422-4928).
- 2A. NEW POWER LINE UP TO WEATHERHEAD WILL BE BUILT BY FLORIDA POWER CORPORATION AT NO COST TO THE CONTRACTOR. CONTRACTOR SHALL PROVIDE WEATHERHEAD METER SOCKET, CABLE ETC. AND SHALL BE RESPONSIBLE FOR COMPLETE INSTALLATION AT NO ADDITIONAL COST TO THE GOVERNMENT.
- 3A. CONTRACTOR SHALL COORDINATE WITH FLORIDA POWER CORPORATION FOR RELOCATION OF ANY POLE AND/OR POWER LINE AND DEENERGIZATION OF POWER LINE AS NEEDED DURING CONSTRUCTION. THIS WORK WILL BE DONE BY FLORIDA POWER CORPORATION AT NO COST TO THE CONTRACTOR.
- 4A. CONTRACTOR SHALL BE RESPONSIBLE FOR DISCUSSING IN ADVANCE WITH FLORIDA POWER CORPORATION, FOR WORK TO BE DONE BY F.P.C., NOTICE REQUIREMENTS, AND ANY OTHER LOCAL RULES AND REGULATION THAT APPLY TO THIS JOB.

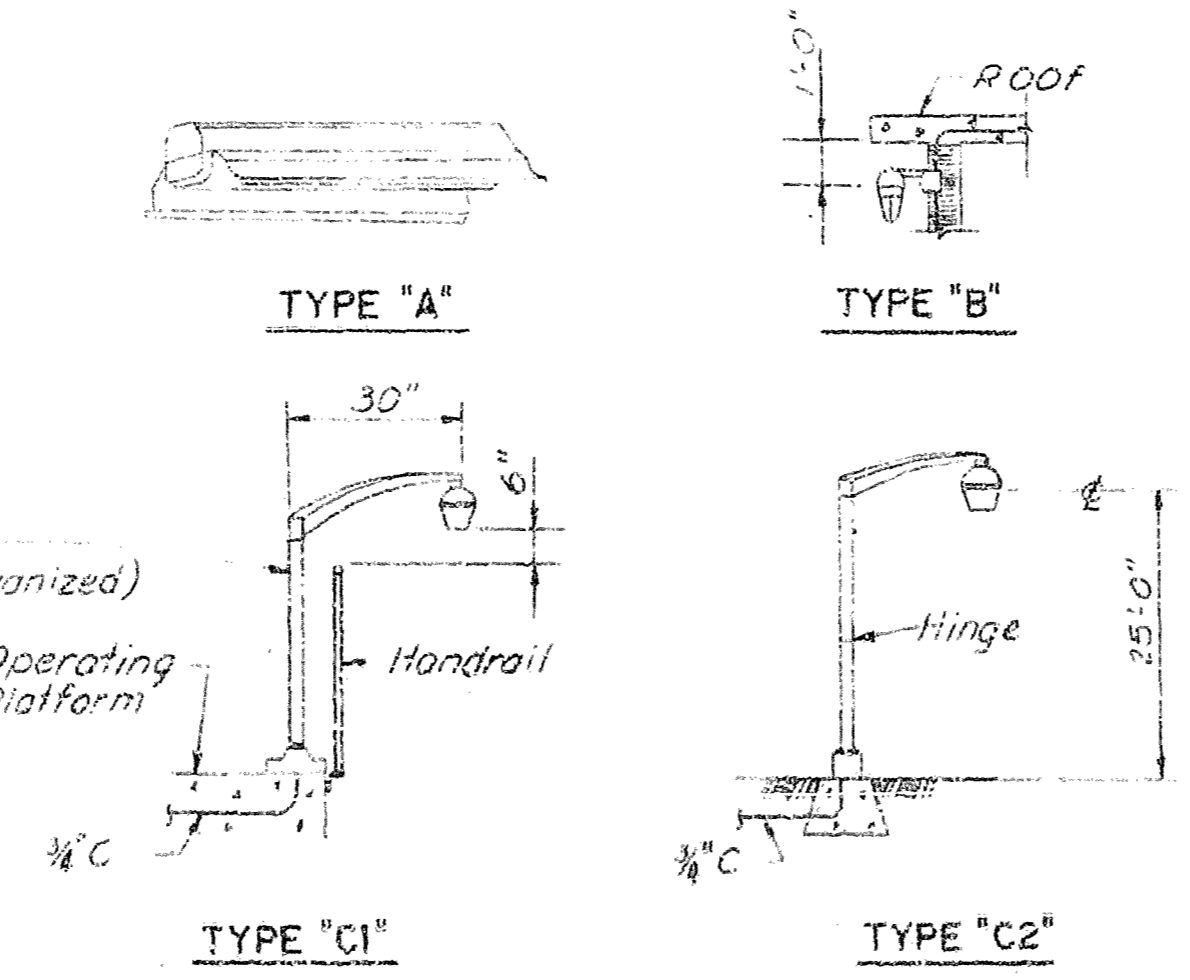


REVISIONS		DATE	APPROVED
NO.	SYM.	ZONE	DESCRIPTION

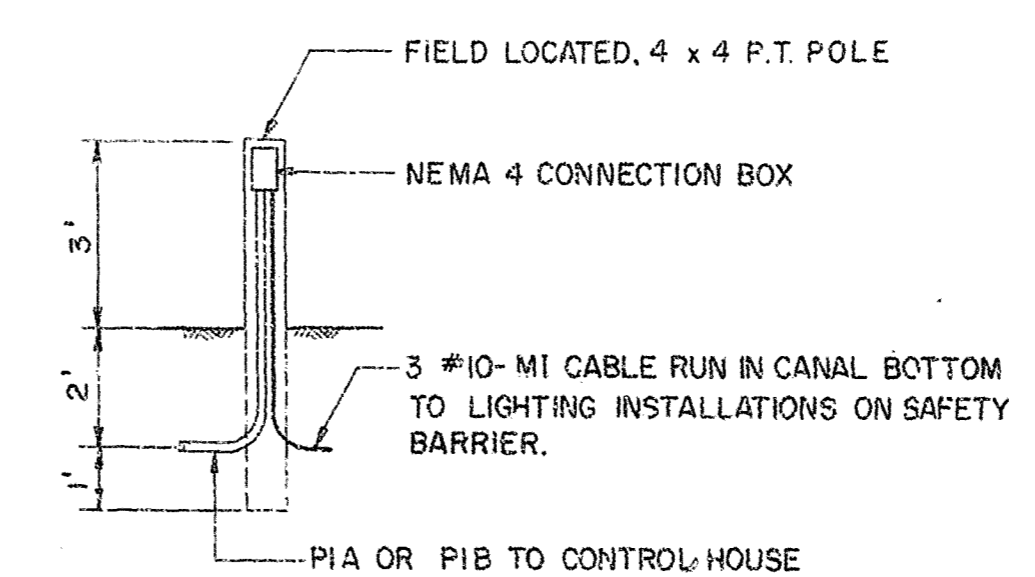
REV.	NO.	SYMBOL	ITEM DESCRIPTION
	1	⊗	LIGHTING FIXTURE, INCANDESCENT
	2	⊙	LIGHTING FIXTURE, FLUORESCENT
	3	⊗	AREA LUMINAIRE "TYPE C"
	4	(H)	INDICATOR LIGHT, NEON
	5	(R)	INDICATING LIGHT: R-RED, G-GREEN
	6	⊗	DUPLEX CONVENIENCE OUTLET: W - WEATHERPROOF
	7	⊗	DUPLEX RECEPTACLE - GROUND FAULT INTERRUPTING TYPE
	8	⊗	SWITCH, TOGGLE, SINGLE POLE
	9	⊗	SWITCH, 3 POSITION, H-O-A OR AS NOTED
	10	⊗	LIMIT SWITCH, NEMA 4
	11	⊗	PB CONTACT NORMALLY OPEN
	12	⊗	PB CONTACT NORMALLY CLOSED
	13	⊗	MOTOR STARTER
	14	⊗	PANELBOARD
	15	⊗	CONTACT, CONTROL RELAY, N.O. AND N.C.
	16	---	GROUND WIRE
	17	⊗	MAIN CONTACTOR
	18	⊗	COIL, CONTACTOR, 120V
	19	⊗	PULL BOX OR JUNCTION BOX
	20	⊗	MOTOR
	21	⊗	SOLENOID OPERATED VALVE, 120V
	22	⊗	SOLENOID VALVE PANELBOARD
	23	⊗	GATE POSITION TRANSMITTER
	24	⊗	HOMERUN TO PANELBOARD OR AS NOTED
	25	---	GROUND CONNECTION
	26	---	CONDUIT EXPOSED
	27	---	CONDUIT CONCEALED IN CEILING
	28	---	CONDUIT CONCEALED IN FLOOR, WALLS OR EARTH
	29	---	CONDUIT, STUB OUT AND CAP
	30	---	CONDUIT EQUIPMENT DRAIN
	31	⊗	SERVICE ENTRANCE WEATHERHEAD AND METER SOCKED
	32	⊗	FUSE, DEAD FRONT INSTALLATION
	33	⊗	LIGHTING FIXTURE, IODINE QUARTZ (TYPE "D")
	34	⊗	PUSH BUTTON STATION, O-C-S WITH 2 INDICATING LTS
	35	⊗	GROUND ROD, 3/4" DIA. x 8' LONG
	36	---	EQUIPMENT GROUND CONNECTION
	37	---	GROUNDING INSERT WITH EQUIPGROUND STRAP
	38	⊗	MAIN GROUND, SHEET STEEL PILE WINGWALL (SEE NOTE 3)
	39	---	NEW POWER LINE



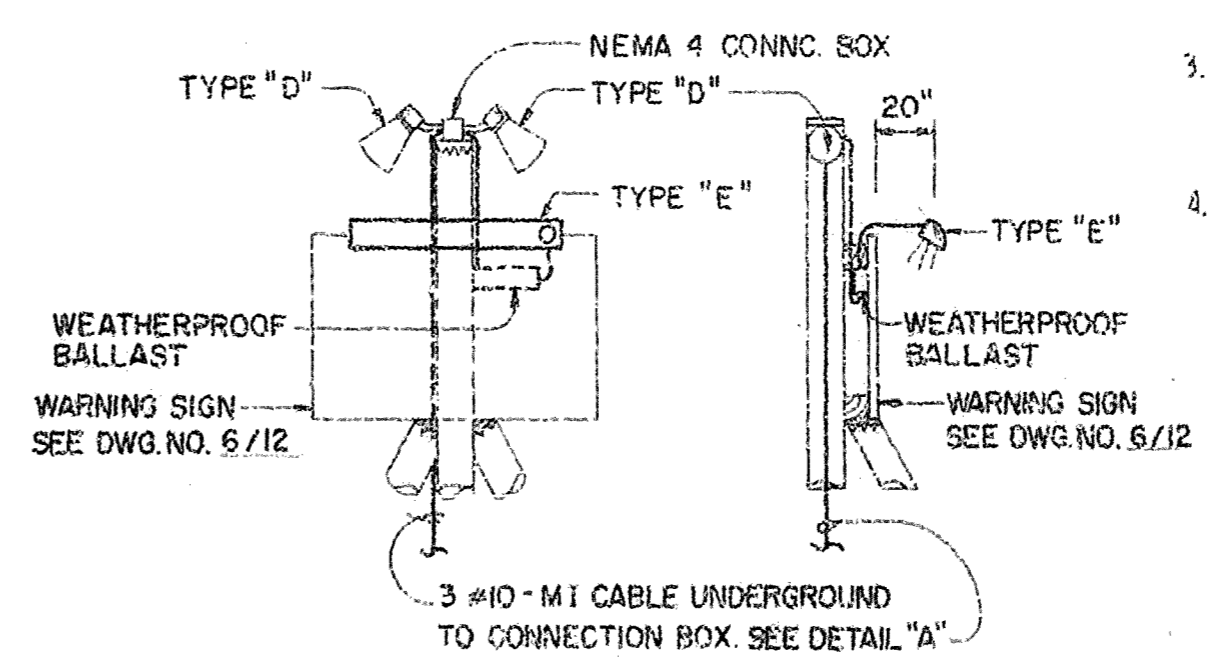
ELECTRICAL SITE PLAN
(NOTE: FOR DETAIL SEE SITE PLAN DWG. NO. 16/5)
SCALE: "A"



TYPICAL LIGHTING FIXTURE INSTALLATION DETAILS
NOT TO SCALE



DETAIL "A"
("MI" CABLE TERMINATION FOR TYPE "D" AND "E")
NOT TO SCALE



TYPES "D" AND "E"
NOT TO SCALE

RECORD DRAWING NOTE
"Shall be," "Provide," "Install," "Remove," etc., indicates work was accomplished under the contract.

- NOTES:
1. SCHEMATIC WIRING DIAGRAMS, CONDUIT AND CABLE SCHEDULE, AND CONDUIT PLANS SHALL BE WORKED TOGETHER AND SHALL TAKE PREFERENCE IN THAT ORDER IN CASES OF CONFLICT.
 2. NOT USED.
 3. PROJECT MAIN GROUNDS SHALL CONSIST OF SHEET PILE WINGWALLS WITH INDIVIDUAL PILES BONDED TOGETHER AND GROUND RODS INSTALLED NEAR EACH CORNER OF THE CONTROL HOUSE.
 4. PRIMARY GROUNDING SHALL BE PROVIDED BY NO. 1 AWG WIRE INSTALLATIONS CONSISTING OF AN EMBEDDED LOOP IN THE CONTROL HOUSE, EMBEDDED GRID IN THE WEIR CREST AND EACH PIER ON THE SPILLWAY STRUCTURE, AND INTER-CONNECTIONS BETWEEN THE LOOP, GRID AND PROJECT MAIN GROUNDS. SECONDARY GROUND CONNECTIONS AS INDICATED SHALL CONFORM TO SPECIFICATION REQUIREMENTS AND SHALL BE AWG NO. 6 MINIMUM.

AS-BUILT

GRAPHIC SCALE

DEPARTMENT OF THE ARMY
JACKSONVILLE DISTRICT, CORPS OF ENGINEERS
JACKSONVILLE, FLORIDA

CENTRAL AND SOUTHERN FLORIDA PROJECT
UPPER ST. JOHNS RIVER BASIN

STRUCTURE 161A AND TIEBACK LEVEE

ELECTRICAL SYSTEMS
SITE PLAN

DATE: F 16/1
SCALE: AS SHOWN DATED: MAR 1995 SHEET 45