

NO.	REVISIONS	DATE

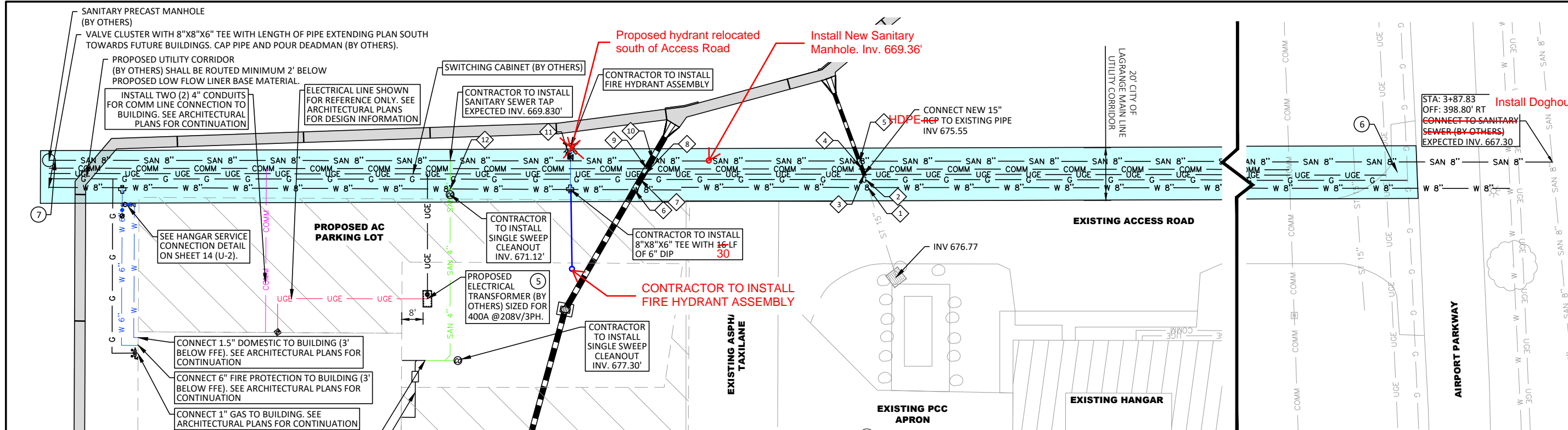
UTILITY PLAN

LAGRANGE - CALLAWAY AIRPORT (LGC) LAGRANGE, GA

benesch
 Allied Benesch & Company
 600 Peachtree Street NE - Suite 2410
 Atlanta, Georgia 30308
 706-722-4114 Job No. - 19023040.01

DESIGNED: ESD
 DRAWN: MFL
 CHECKED: JCY
 APPROVED: P. BROWN

PROJECT: GA CROWN HANGAR TAXILANE - ROUGH GRADING/UTILITIES
 DATE: OCTOBER 2023
 SHEET: 13/28
 DRAWING NO.: U-1



#	FG	UTILITY #1		UTILITY #2	
		TYPE	ELEV (IE)	TYPE	ELEV (TOP)
1	678.4	EX. 15" RCP	675.70	PR. 8" WATER	673.70
2	678.3	EX. 15" RCP	675.60	PR. 1" GAS	674.60
3	678.3	EX. 15" RCP	675.55	PR. UGE	674.55
4	678.3	PR. 15" RCP	675.52	PR. COMM	674.52
5	678.2	PR. 15" RCP	675.48	PR. 8" SAN.	669.79
6	679.0	PR. 24" RCP	675.79	PR. 8" WATER	673.71
7	678.8	PR. 24" RCP	675.77	PR. 1" GAS	675.18
8	678.6	PR. 24" RCP	675.76	PR. UGE	675.34
9	678.4	PR. 24" RCP	675.75	PR. COMM	675.34
10	678.3	PR. 24" RCP	675.73	PR. 8" SAN.	670.19
11	677.7	PR. 6" WATER	673.00	PR. 8" SAN.	670.25
12	678.9	PR. 8" WATER	673.90	PR. 8" SAN.	671.80

- CONSTRUCTION NOTES:**
- ALL UTILITY WORK WITHIN THE CONSTRUCTION LIMITS SHALL BE COMPLETED PRIOR TO PAVEMENT CONSTRUCTION. CONTRACTOR SHALL VERIFY THAT ALL UTILITIES ARE IN PLACE PRIOR TO PROCEEDING.
 - THE CONTRACTOR SHALL BE RESPONSIBLE FOR THE REPAIR & ASSOCIATED COST OF ANY DAMAGE TO UTILITIES CAUSED BY WORK PERFORMED AS INDICATED ON THE DRAWINGS & SPECIFICATIONS.
 - CONTRACTOR SHALL COORDINATE WITH THE CITY OF LAGRANGE AND/OR UTILITY COMPANIES FOR ALL UTILITY INSTALLATIONS.
 - SEE SHEET 15 (ST-1) FOR PROPOSED STORM DRAIN PLAN.
 - PROPOSED ELECTRIC TRANSFORMER, ELECTRICAL VAULT, ETC. FOR NEW HANGAR. SEE MEP PLANS (BY OTHERS) FOR DETAILS.
 - ANY BORINGS, ROADWAY CUTS AND/OR PATCHES REQUIRED FOR UTILITY INSTALLATION OF MAIN LINE ARE TO BE ACCOMPLISHED AND PERFORMED BY ENTITY DOING THE INSTALLATION. NOT A 'PAY ITEM'.
 - CONTRACTOR TO CONSTRUCT 12" THICK UTILITY PAD SURROUNDING SANITARY MANHOLE CONSTRUCTED BY OTHERS. COST OF UTILITY PAD SHALL BE INCIDENTAL TO PROJECT COST. SEE SHEET 14 (U-2) FOR DETAIL.
 - DEDUCTIVE ALTERNATE FOR SANITARY SEWER ITEMS PROVIDES THE CITY WITH AN OPTION TO INSTALL THE NON - BY OTHERS SANITARY SEWER ITEMS THEMSELVES. UNDER THIS OPTION, THE CITY WOULD INSTALL ALL SANITARY SEWER ITEMS UP TO THE PROPOSED HANGAR AND THE CONTRACTOR WOULD BE RESPONSIBLE FOR CONNECTIONS OF INTERIOR SANITARY LINES TO THE CITY INSTALLED EXTERIOR SANITARY LINES.
 - POTENTIAL UTILITY CONFLICTS WITHIN AIRPORT ROAD TO BE BROUGHT TO THE IMMEDIATE ATTENTION OF THE ENGINEER.
 - ALL UTILITIES SHOWN ARE PROPOSED AND SHALL BE CONSTRUCTED TO MEET SEPARATION REQUIREMENTS AND CLEARANCES AS DEFINED BY THE CITY OF LAGRANGE STANDARDS.
 - CITY OF LAGRANGE IS REQUIRED TO BE PRESENT AND INSPECT ALL WATER LINE CONNECTIONS TO CITY WATER MAIN.

SPEC NO.	BID ITEM	QUANT.	UNIT
B-102-1	1.5" HDPE WATER LINE (DOMESTIC)	59	L.F.
B-102-2	6" DIP WATER LINE (FIRE)	82	L.F.
B-102-3	6"x6"x4" WATER LINE TEE, INCLUDING THRUST BLOCK	1	E.A.
B-102-4	8"x8"x6" WATER LINE TEE, INCLUDING THRUST BLOCK	1	E.A.
B-102-5	90 DEGREE WATER LINE BEND, 4", INCLUDING THRUST BLOCK	1	E.A.
B-102-6	4" GATE VALVE	1	E.A.
B-102-7	6" GATE VALVE, WITH PIV	1	E.A.
B-102-8	FIRE HYDRANT ASSEMBLY, COMPLETE	1	L.S.
B-103-1	4" PVC SANITARY SEWER PIPE	90	L.F.
B-103-2	4" SANITARY SEWER CLEANOUT	2	E.A.
B-110-1	COMM LINE CONNECTION	1	L.S.
B-110-2	ELECTRICAL CONNECTION	1	L.S.

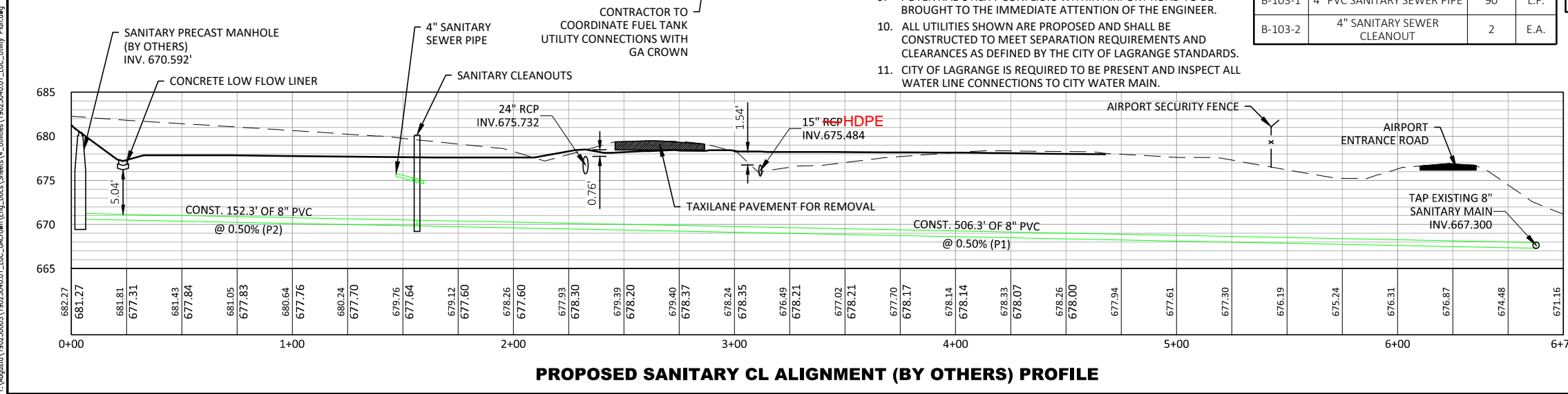
SPEC NO.	BID ITEM	QUANT.	UNIT
B-103-1	4" PVC SANITARY SEWER PIPE	90	L.F.
B-103-2	4" SANITARY SEWER CLEANOUT	2	E.A.

LEGEND

- W — EXISTING WATER LINE
- GAS — EXISTING GAS LINE
- UGE — EXISTING UNDERGROUND ELECTRICAL LINE
- COMM — EXISTING COMMUNICATIONS LINE
- SAN — EXISTING SANITARY SEWER LINE
- G — PROPOSED GAS LINE (BY OTHERS)
- UGE — PROPOSED UNDERGROUND ELECTRICAL LINE (BY OTHERS)
- COMM — PROPOSED COMMUNICATIONS LINE (BY OTHERS)
- SAN — PROPOSED SANITARY SEWER MAIN LINE (BY OTHERS)
- W — PROPOSED WATER MAIN LINE (BY OTHERS)
- w — PROPOSED WATER HANGAR SERVICE LINE
- 20' WIDE CITY OF LAGRANGE UTILITY CORRIDOR

NOTE:

- (BY OTHERS) INDICATES THE UTILITY COMPANY (CITY OF LAGRANGE AND/OR TROUP COUNTY) WILL INSTALL SECTIONS OF UTILITY INDICATED, INCLUDING MATERIALS, LABOR, EQUIPMENT, ETC.
- CONTRACTOR IS NOT RESPONSIBLE FOR INSTALLING (BY OTHERS) UTILITIES.
- CONTRACTOR IS RESPONSIBLE FOR INSTALLING UTILITIES SHOWN IN COLOR.



Last Saved: 10/5/2023 3:12:44 PM Saved By: JWRIGHT Plotted: 10/5/2023 3:38 PM
 Y:\Augusto\19023040.01_LGC_Callaway\Eng_Docs\Sheets\4 - Utilities\19023040.01_LGC_Utilities_Plan.dwg