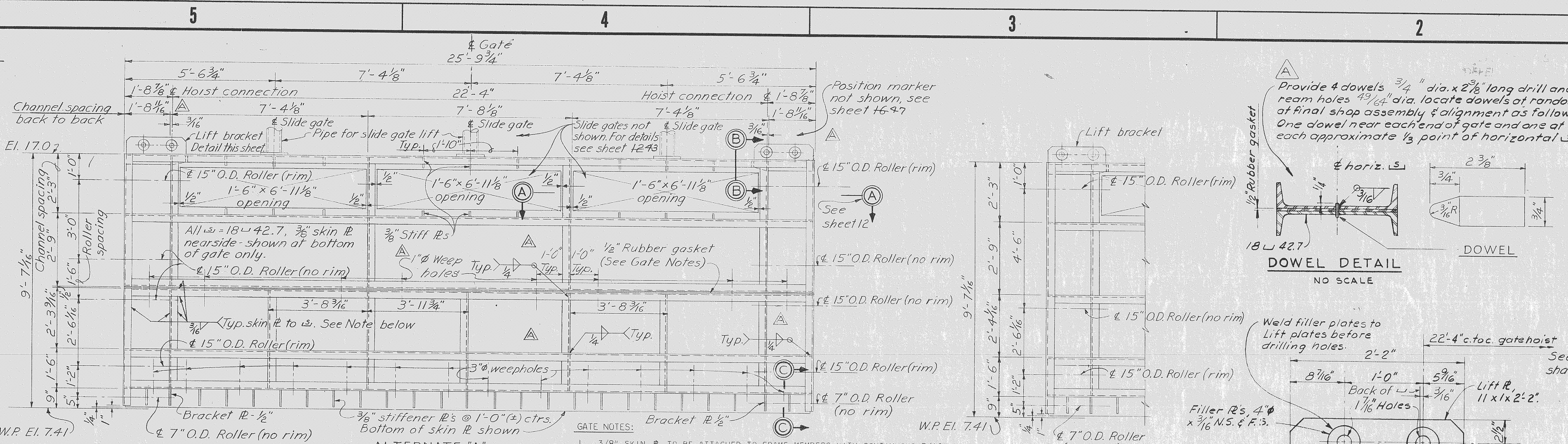
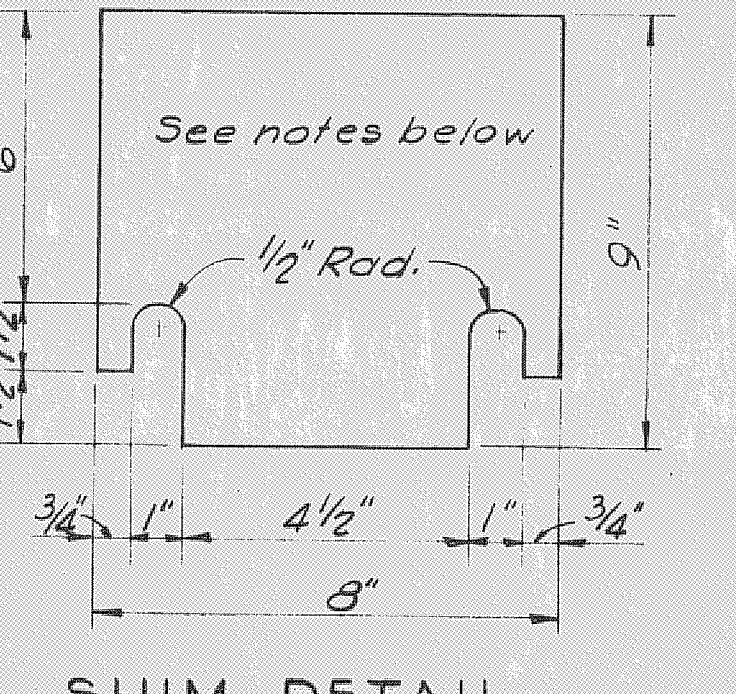
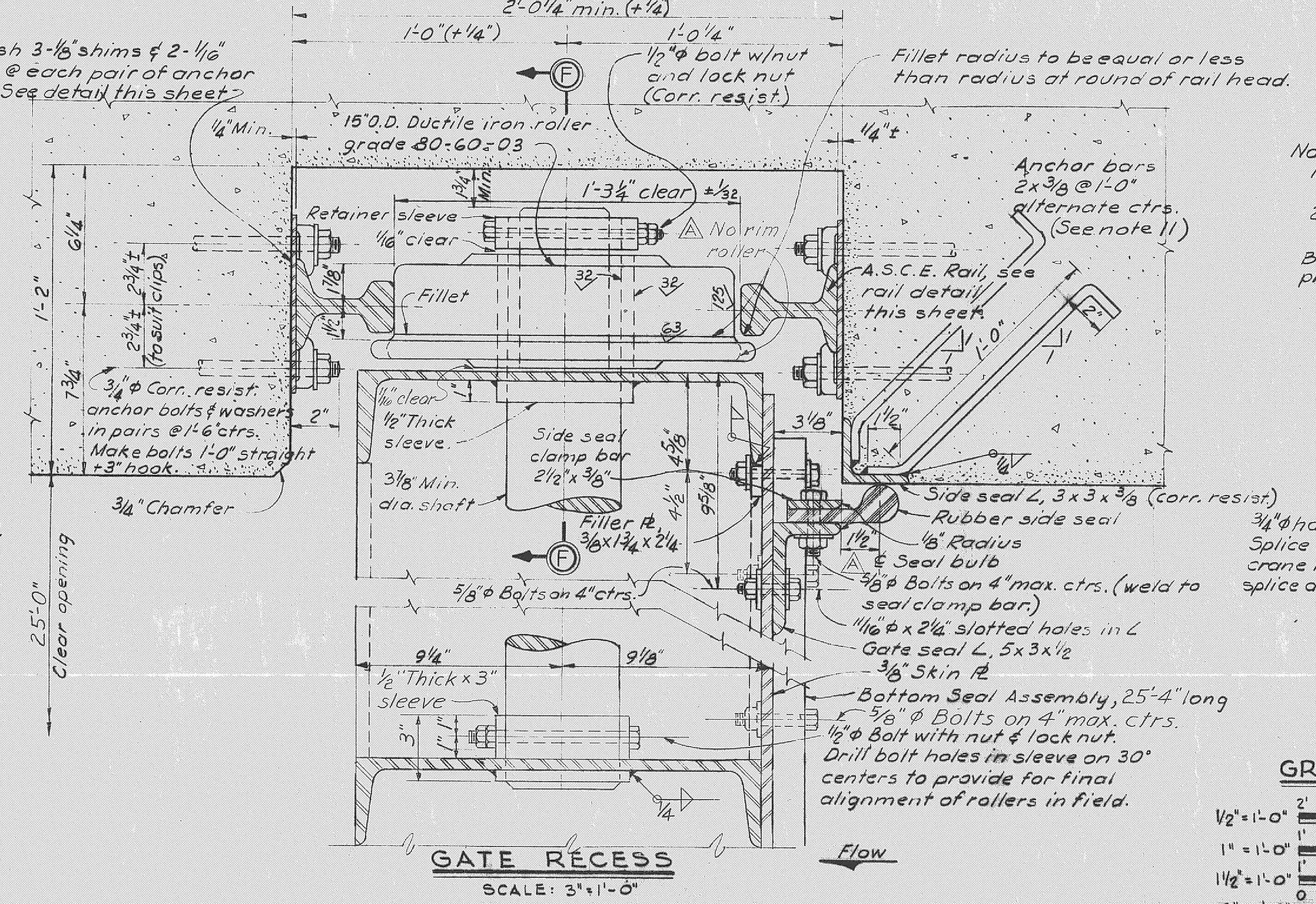
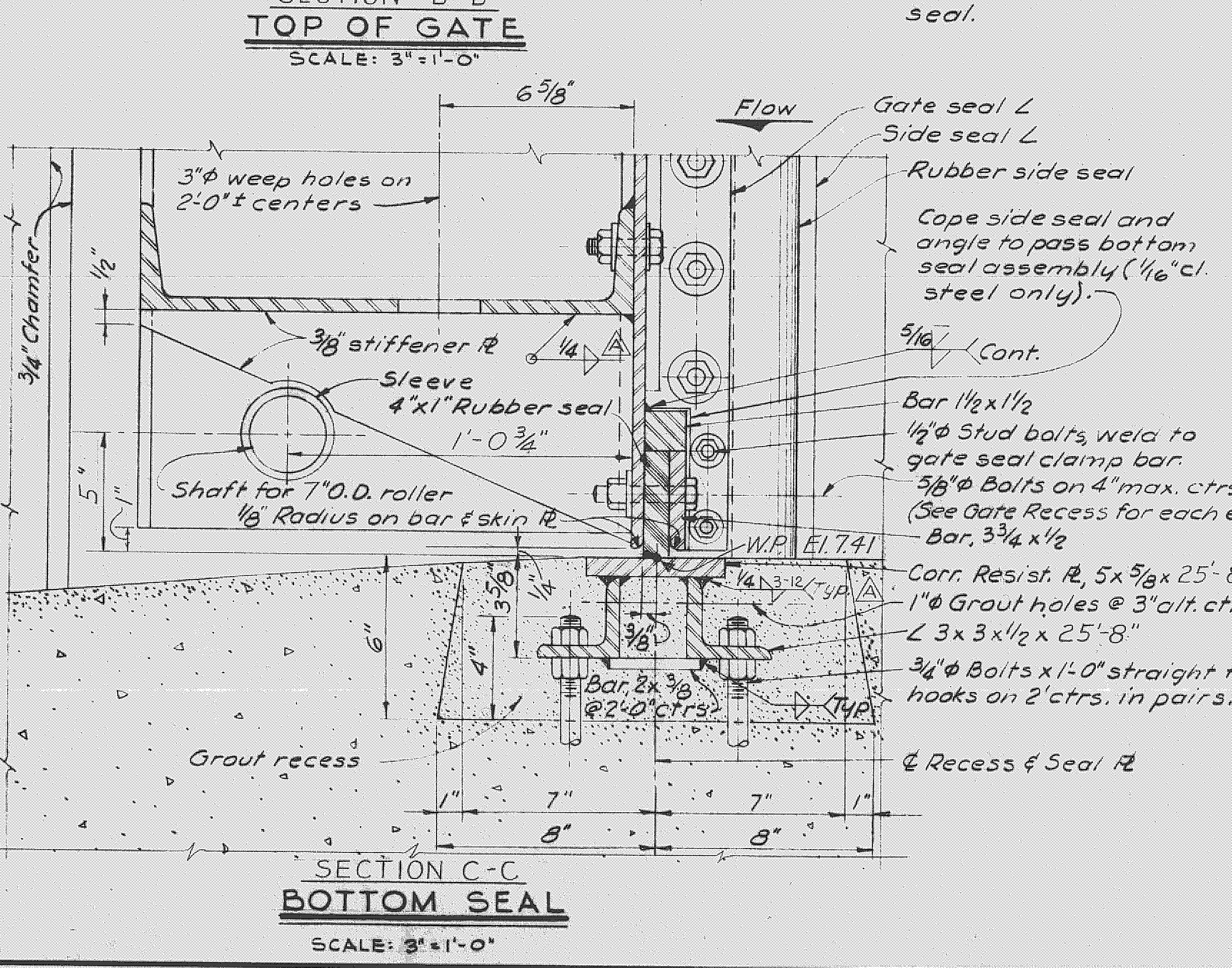
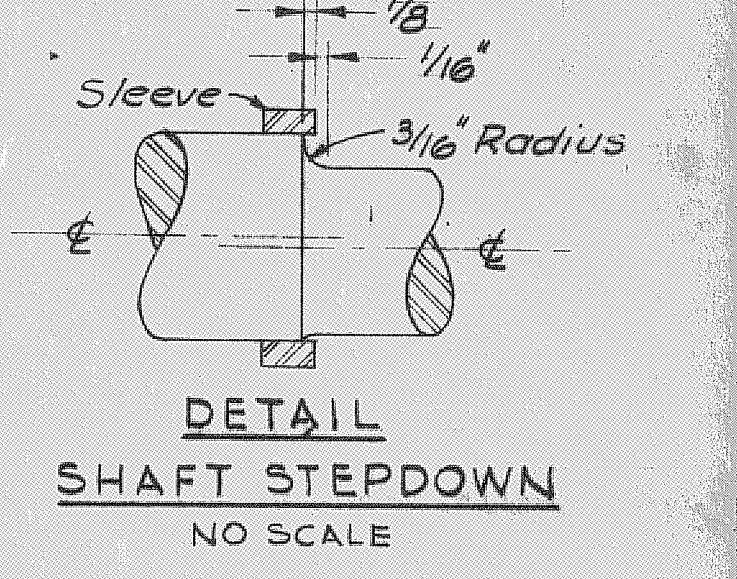
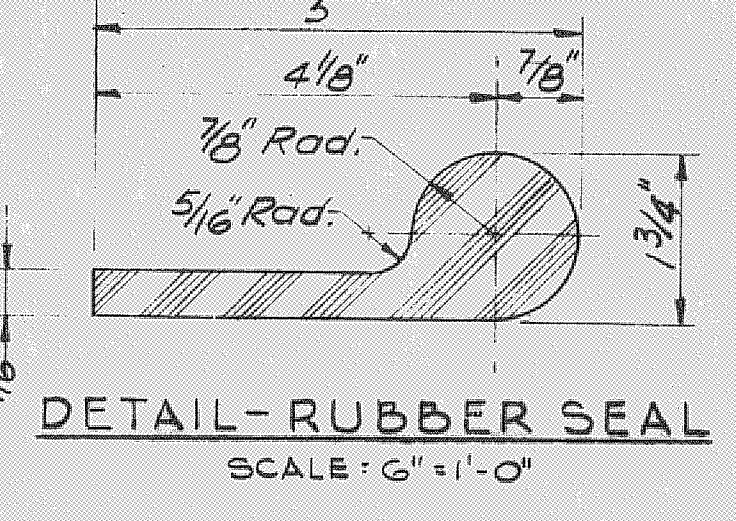
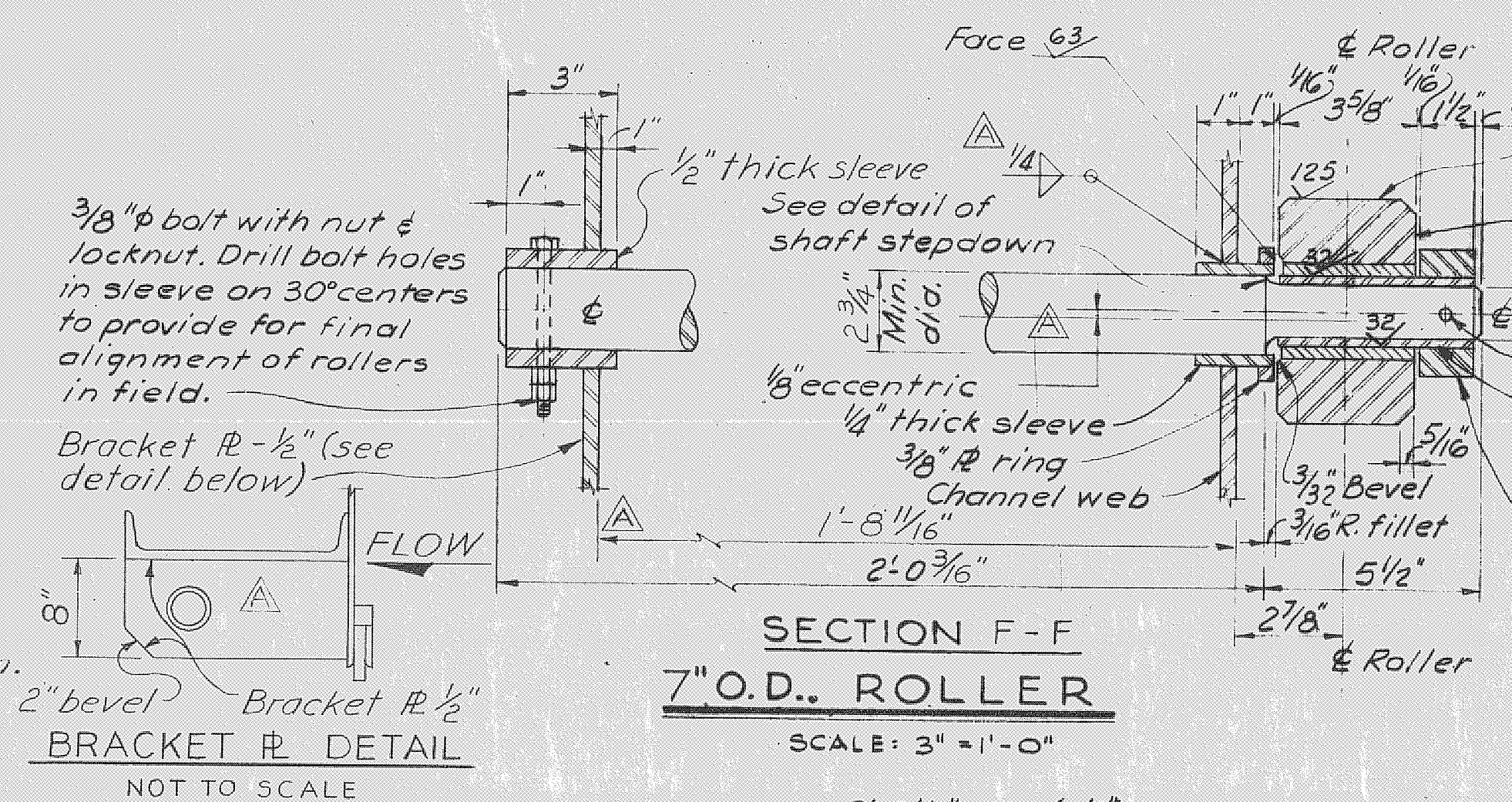
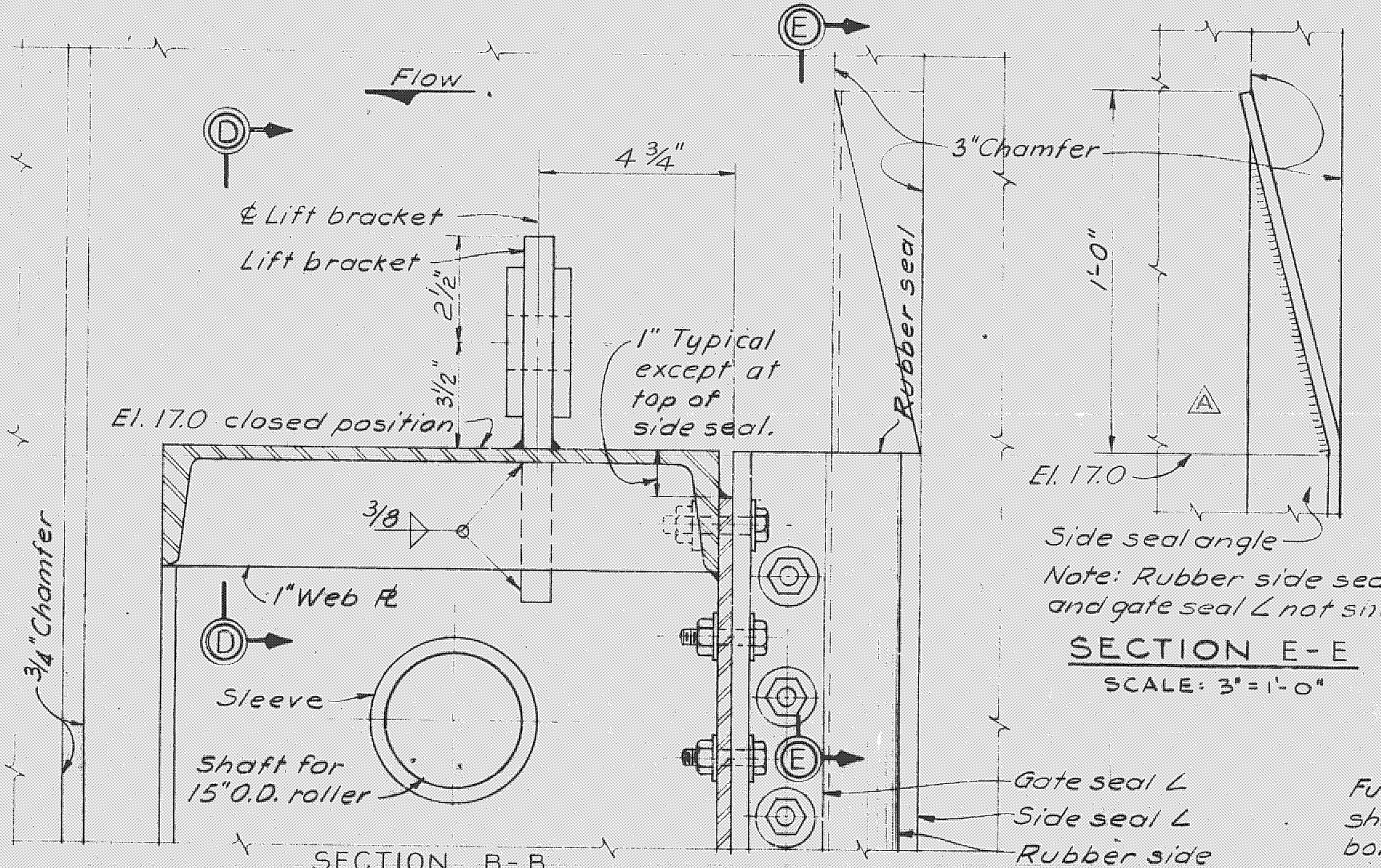
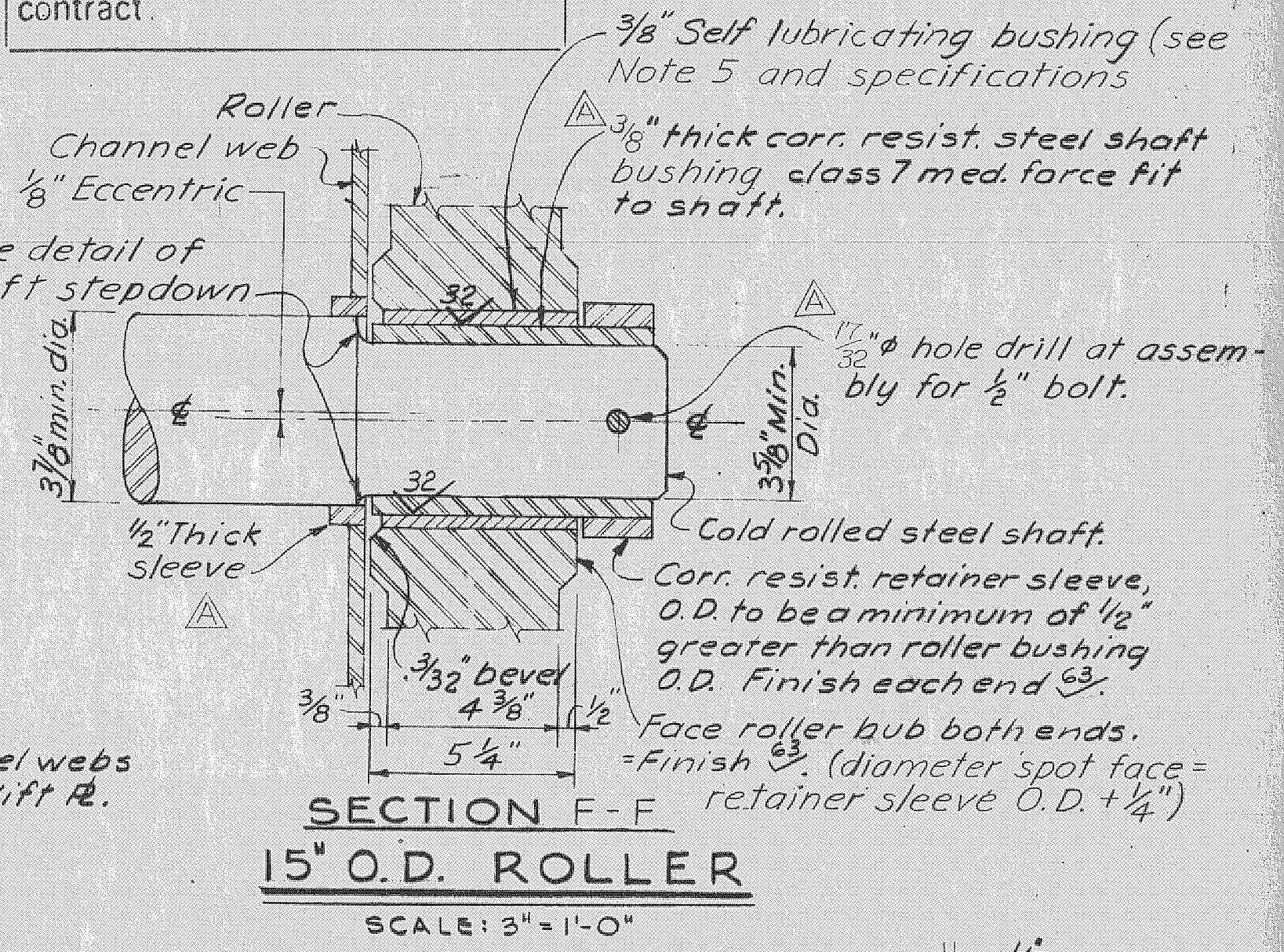
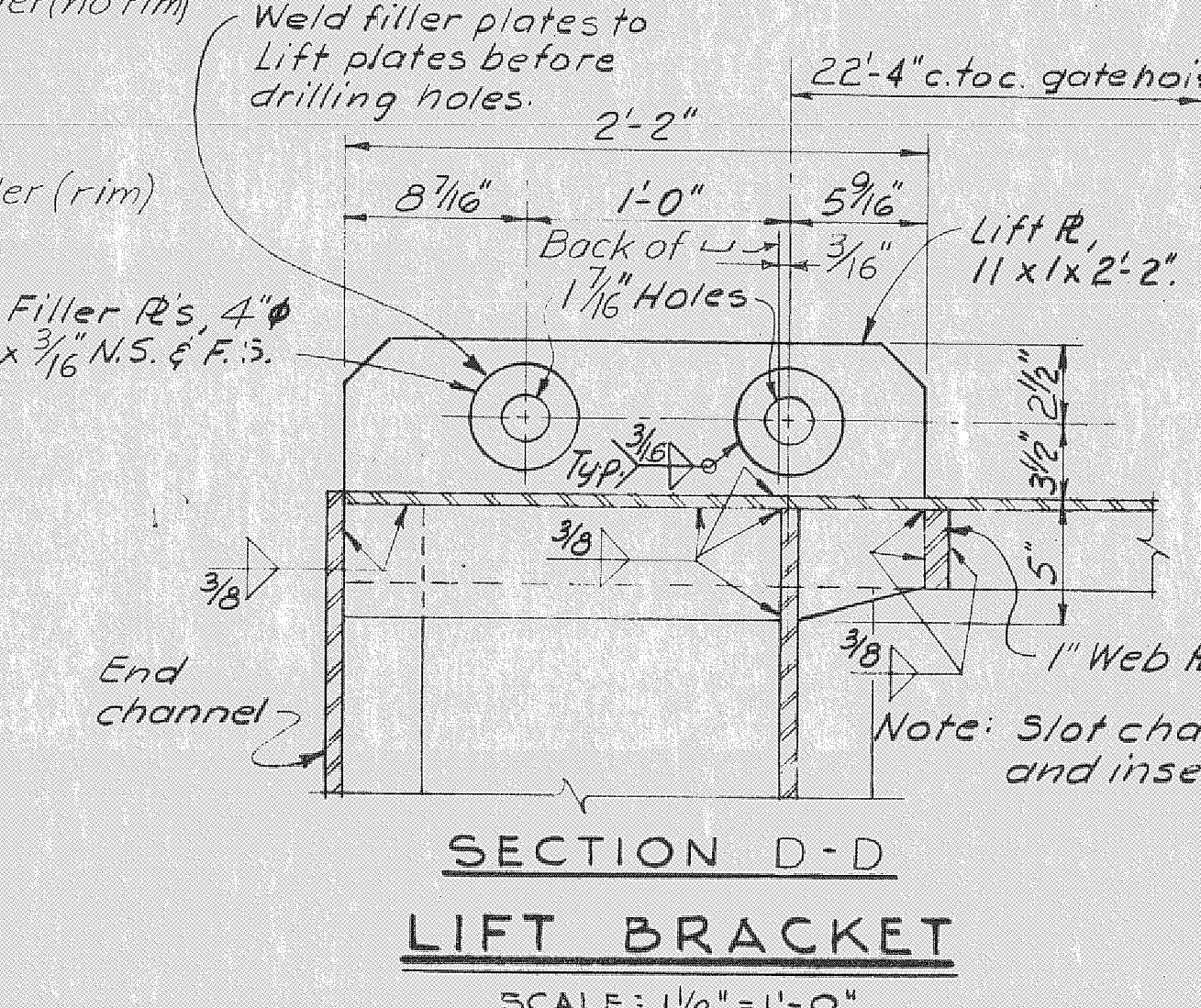
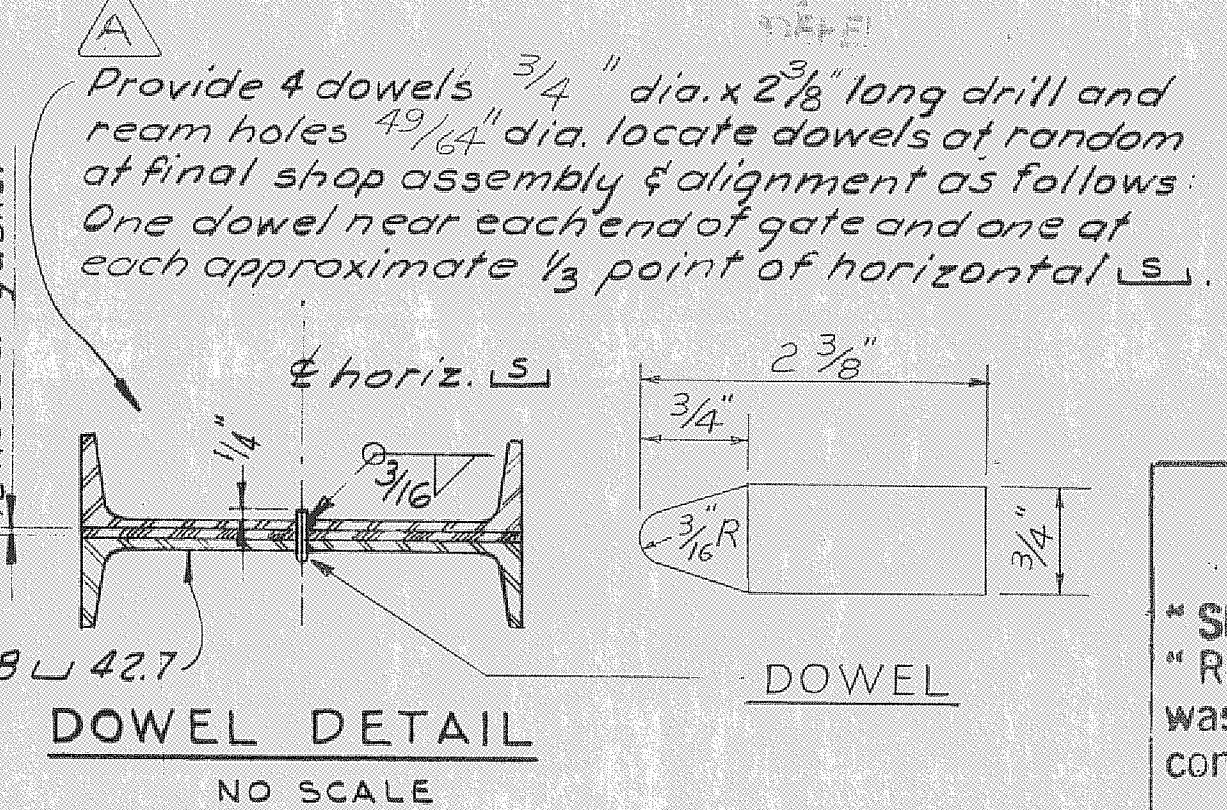


| REVISIONS | | | | | |
|-----------|------|------|---------------------------------------|---------|----------|
| NO. | SYM. | ZONE | DESCRIPTION | DATE | APPROVED |
| 20 | A | | REVISED TO CONFORM TO AMENDMENT NO. 2 | 5-16-66 | W.C.L. |

RECORD DRAWING NOTE
 "Shall be," "Provide," "Install," "Remove," etc., indicates work was accomplished under the contract.

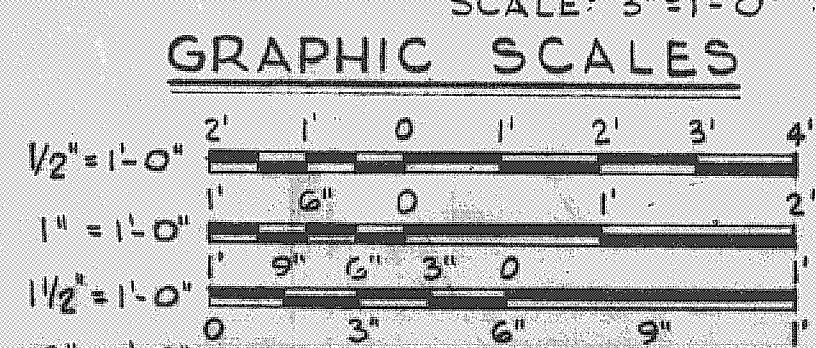
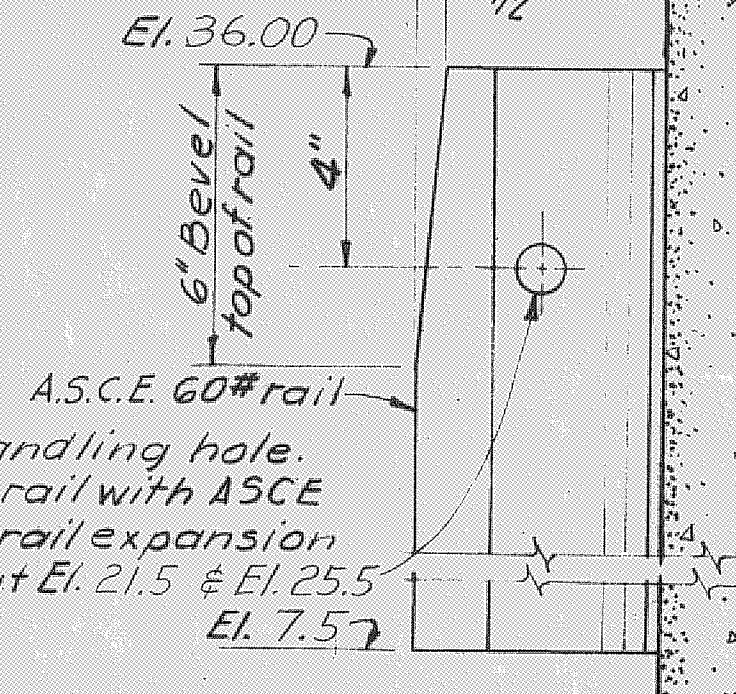


- GATE NOTES:**
- 3/8" SKIN R TO BE ATTACHED TO FRAME MEMBERS WITH CONTINUOUS 3/16" FILLET WELDS ON BOTH SIDES OF EACH CONTACT FLANGE.
 - 1/2" RUBBER GASKET REQUIRED BETWEEN GATE SECTIONS FOR ALTERNATE "A". BOLT SECTIONS TOGETHER WITH 1" O BOLTS ON 6" ALTERNATE CENTERS. PROVIDE DOWELS, AS SHOWN IN "DOWEL DETAIL", FOR ACCURATE POSITIONING OF UPPER AND LOWER GATE SECTIONS AT FINAL ASSEMBLY.
 - 15" O.D. ROLLERS ARE TO HAVE A RIM, AS SHOWN IN THE "GATE RECESS" DETAIL, WHERE A RIM IS INDICATED IN THE "GATE ELEVATION" ABOVE. ALL OTHER ROLLERS ARE NOT TO HAVE A RIM OR FILLET.
 - ALL CHANNELS 18 - 42.7.
 - 3/8" SKIN R NEARSIDE NOT SHOWN EXCEPT AT BOTTOM OF GATE.
 - HORIZONTAL DIMENSIONS, MATERIALS, AND CONNECTIONS FOR ALTERNATE "B" ARE THE SAME AS FOR ALTERNATE "A".



NOTES:

- ALL MATERIAL STRUCTURAL STEEL, UNLESS OTHERWISE NOTED.
- ALL MATERIAL NOTED ON THIS SHEET AS CORROSION RESISTING SHALL BE CORROSION RESISTING STEEL, TYPE 304 OR 410, UNLESS SPECIFIED OTHERWISE.
- IRREGULARITIES AND THE PLANE OF THE EXPOSED SURFACES OF EMBEDDED METAL SEALS IN CONTACT WITH THE RUBBER SEALS SHALL NOT VARY MORE THAN 1/16" FROM POSITIONS SHOWN.
- SHIMS INDICATED TO BE FURNISHED ARE TO BE INSTALLED, AS REQUIRED, TO OBTAIN NECESSARY CLEARANCES.
- THE ROLLER BUSHING I.D. IS TO BE 1/8" GREATER THAN THE SHAFT BUSHING O.D.
- OPTIONS ON EMBEDDED METAL SEALS ARE AS FOLLOWS:
 (A) THE 3/8" THICK CORROSION RESISTING SIDE SEALS MAY BE REPLACED WITH 1/2" THICK BENT CHROME CLAD PLATES.
 (B) THE 5/8" THICK CORROSION RESISTING BOTTOM SEAL PLATES MAY BE REPLACED WITH 5/8" THICK CHROME CLAD PLATES.
- ALL BOLTS, NUTS, AND WASHERS (EXCEPT CORROSION RESISTING STEEL) SHALL BE GALVANIZED.
- ALL GALVANIZED ITEMS SHALL BE GALVANIZED AFTER FABRICATION.
- SEE SPECIFICATIONS FOR QUALITY OF FINISH REQUIRED BY SYMBOLS 125, 32, AND 63.
- FURNISH AND INSTALL THREE MAIN GATES COMPLETE, AS DETAILED ON THIS SHEET, WITH SLIDE GATES AS SHOWN ON SHEET 12.
- AT THE OPTION OF THE CONTRACTOR, 3/8" Ø x 6 3/8" OR EQUAL ANCHOR STUDS MAY GENERALLY BE SUBSTITUTED FOR 2" x 3/8" ANCHOR BARS; HOWEVER, SPECIFIC APPROVAL OF THE SUBSTITUTION OR EACH INDIVIDUAL EMBEDDED ITEM IS REQUIRED PRIOR TO FABRICATION.
- POSITION INDICATORS ARE REQUIRED ON THE PIERS AND THE ABUTMENT AT THE SOUTH END OF EACH GATE.
- SPACE ALL BOLTS CONNECTING RUBBER SEAL ASSEMBLIES TO THE GATE SUCH THAT BOLTS FALL ON THE GAGE LINE OF THE FRAMING MEMBERS ± 1/4". BEVEL WASHERS SHALL BE FURNISHED AT BOLTED CONNECTIONS TO ALL CHANNEL FLANGES.
- FOR POSITION INDICATORS AND POSITION MARKERS, SEE SHEET 16.
- ALL BOLTS SHALL BE FURNISHED WITH ONE NUT AND WASHER UNLESS OTHERWISE NOTED.
- THE MAIN GATE MAY BE FABRICATED IN EITHER TWO PIECES "ALTERNATE A", OR ONE PIECE "ALTERNATE B" AT THE CONTRACTOR'S OPTION.
- THE O.D. OF SHAFT SLEEVES AND THE I.D. OF THE ROLLER BUSHINGS TO BE FINISHED 63. REMOVE ALL SHARP CORNERS.



AS BUILT

U. S. ARMY ENGINEER DISTRICT, JACKSONVILLE
 CORPS OF ENGINEERS
 JACKSONVILLE, FLORIDA

CENTRAL AND SOUTHERN FLORIDA PROJECT
 FOR FLOOD CONTROL AND OTHER PURPOSES

CANAL 54, SECTION 2
 STRUCTURE-157
 MAIN GATES

Inv. No. CIV. ENG. 08-125-66-66 (SIZ) DWG. NO.
 DATED: 23 APRIL 1966 F
 SCALE: AS SHOWN DATED: APRIL 1966 SHEET 41 OF 72

H.H.H. M.G.L.
 A.S.P. T.M.R.

D.O. FILE NO. 496-29-370 1496-30,952