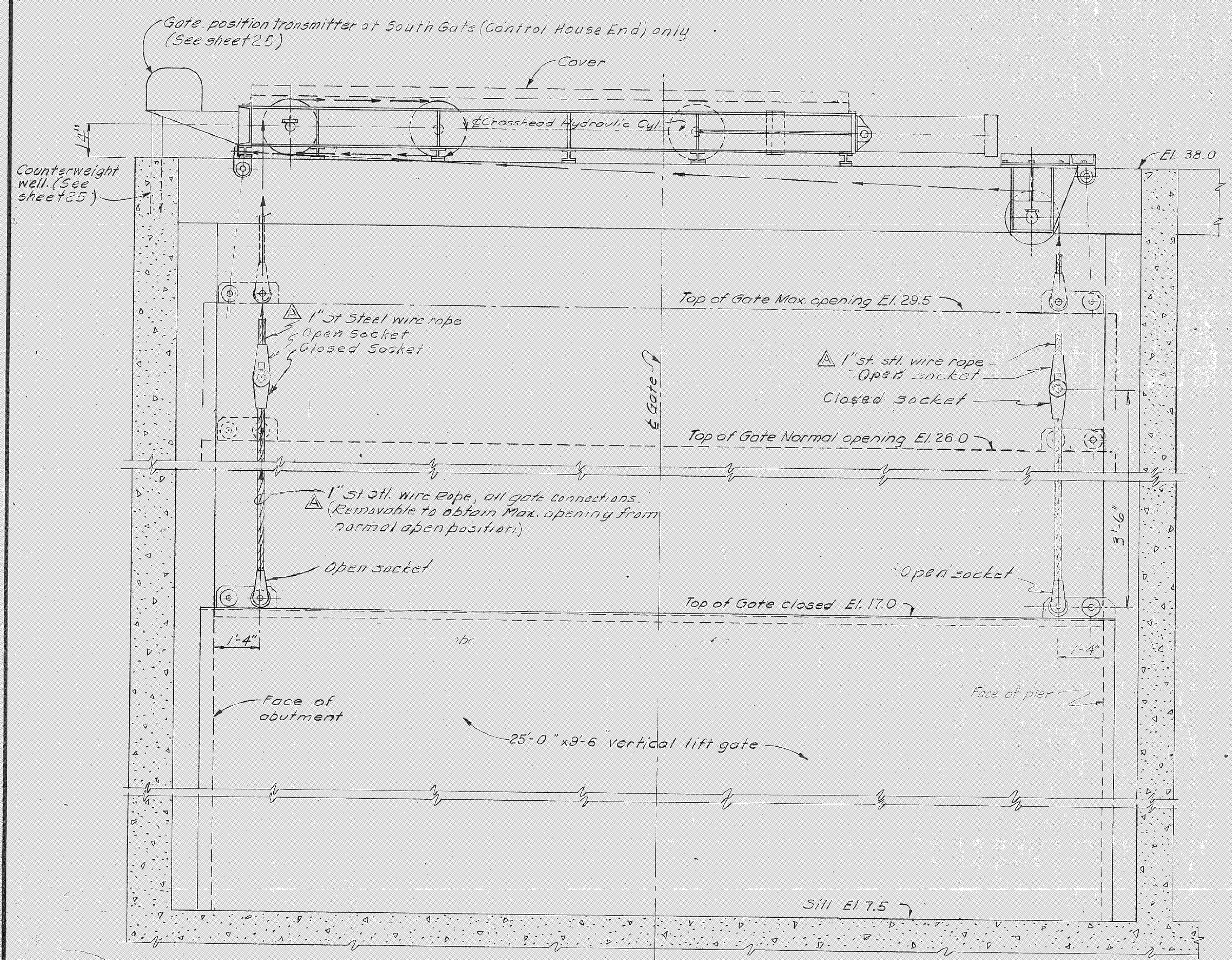
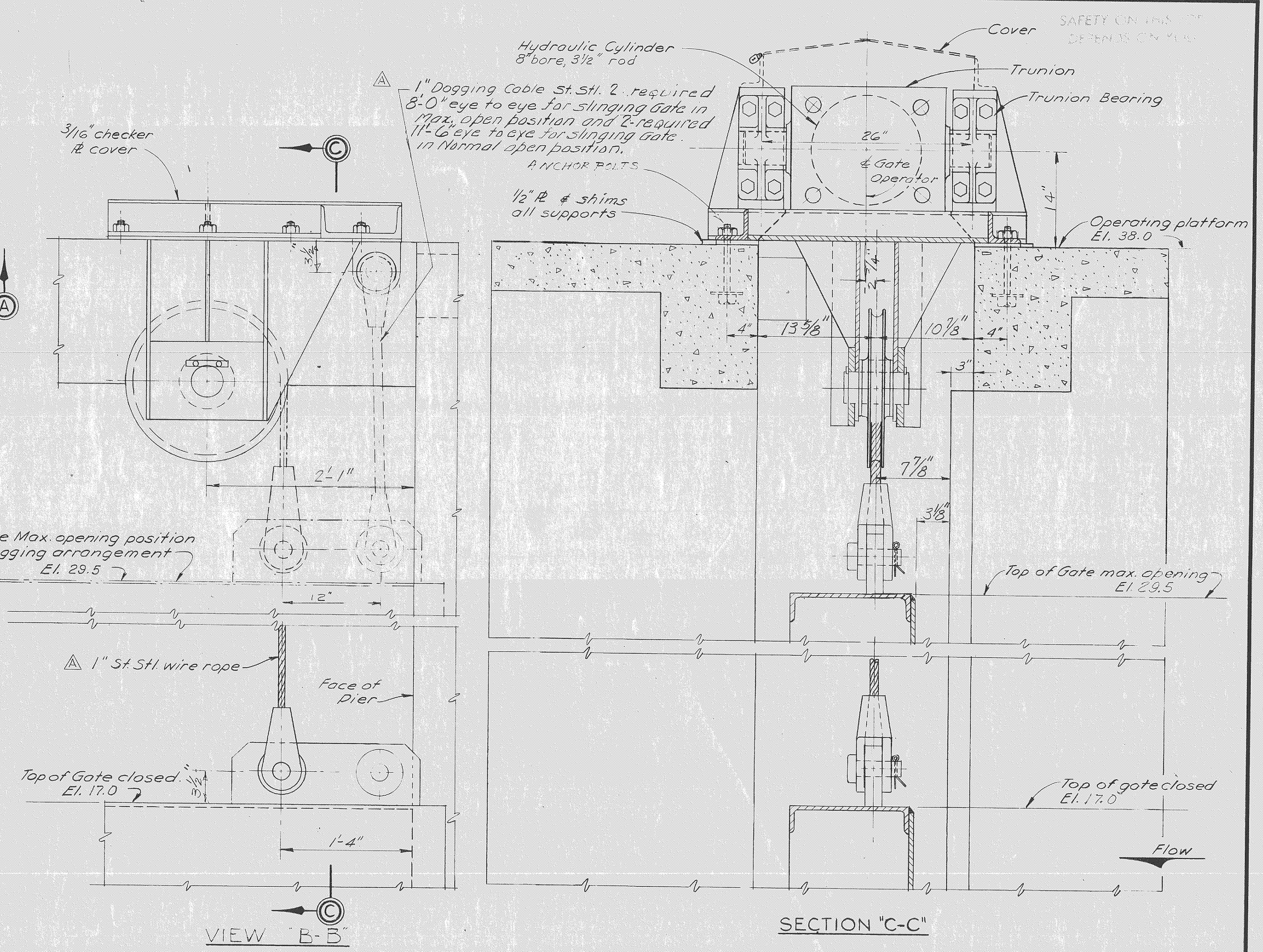


PLAN AT OPERATING PLATFORM (TYPICAL ALL GATES) (Cover not shown)  
SCALE: 1/2"=1'-0"



SECTION 'A-A'

**NOTE**  
DOGGING CABLES MANUFACTURED WITH MEASUREMENTS AS INDICATED ABOVE. TESTS TO ENSURE THAT CABLES WOULD OPERATE AS DESIGNED INDICATED THAT CABLES ARE NOT LONG ENOUGH TO ALLOW FOR PLATES, SHIMS, CABLE STRETCH, EXPANSION OF CABLES, ALLOWABLE TOLERANCES IN CONCRETE. DOGGING CABLES SHOULD BE DESIGNED 1 INCH LONGER.  
CONTRACTOR ELECTED TO PROVIDE SPECIALLY MANUFACTURED ADAPTORS WITH PINS TO FIT PLATE ON TOP OF GATE AND SOCKET ON DOGGING CABLES. 6 EACH ADAPTORS PROVIDED. THIS WILL PROVIDE SUFFICIENT LENGTH FOR EASY INSTALLATION OF DOGGING SLINGS.

- Notes:**
- 1 - a. Estimated Gate weight 21,000\*\*  
b. Estimated Hoist load 29,000\*\*
  - 2 - Gate Speed 4"/min. for simultaneous operation.
  - 3 - Working Pressure of estimated hoist load 2000 p.s.i.
  - 4 - By positioning of Control Valves Gate will be self lowering without the use of Power Unit.

**RECORD DRAWING NOTE**  
"Shall be," "Provide," "Install," "Remove," etc., indicates work was accomplished under the contract.

**AS BUILT**

TO CONFORM TO AMENDMENT NO. 1		5-12-66
NO. 518 2041	DATE	APPROVER
PERMISSIONS		
U.S. ARMY ENGINEER DISTRICT, JACKSONVILLE CORPS OF ENGINEERS JACKSONVILLE, FLORIDA		
CENTRAL AND SOUTHERN FLORIDA PROJECT FOR FLOOD CONTROL AND OTHER PURPOSES		
STRUCTURE-157		
GATE HOIST- GENERAL ARRANGEMENT		
INVESTIGATION NO. CIV. ENG. 20-123-66-66	SITE	
DATED 28 APRIL 1966	F	
SCALE: AS SHOWN	DATE: APRIL 1966	SHEET 20 OF 72