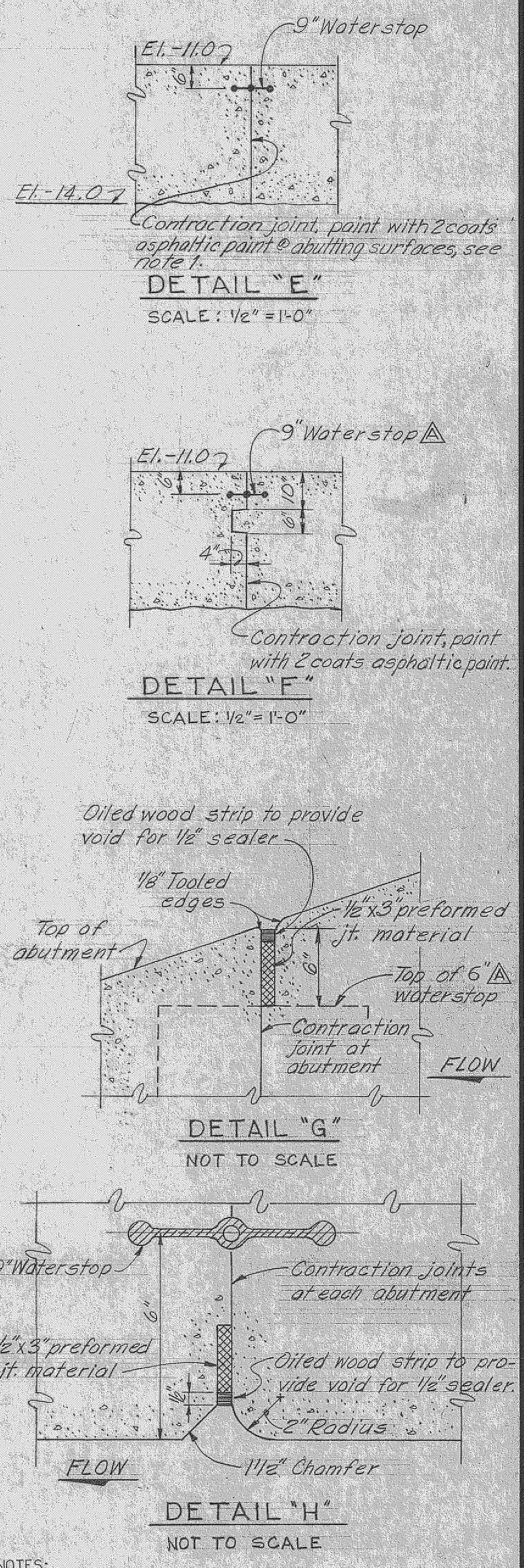
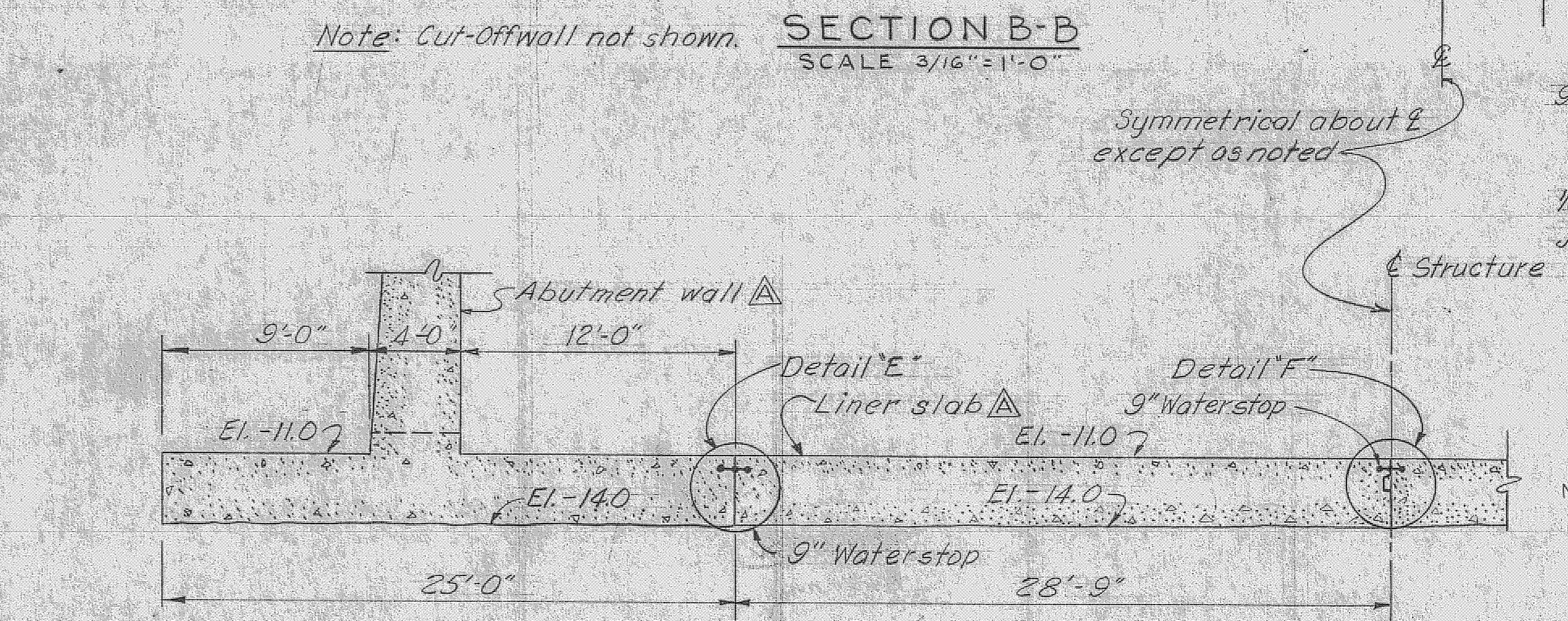
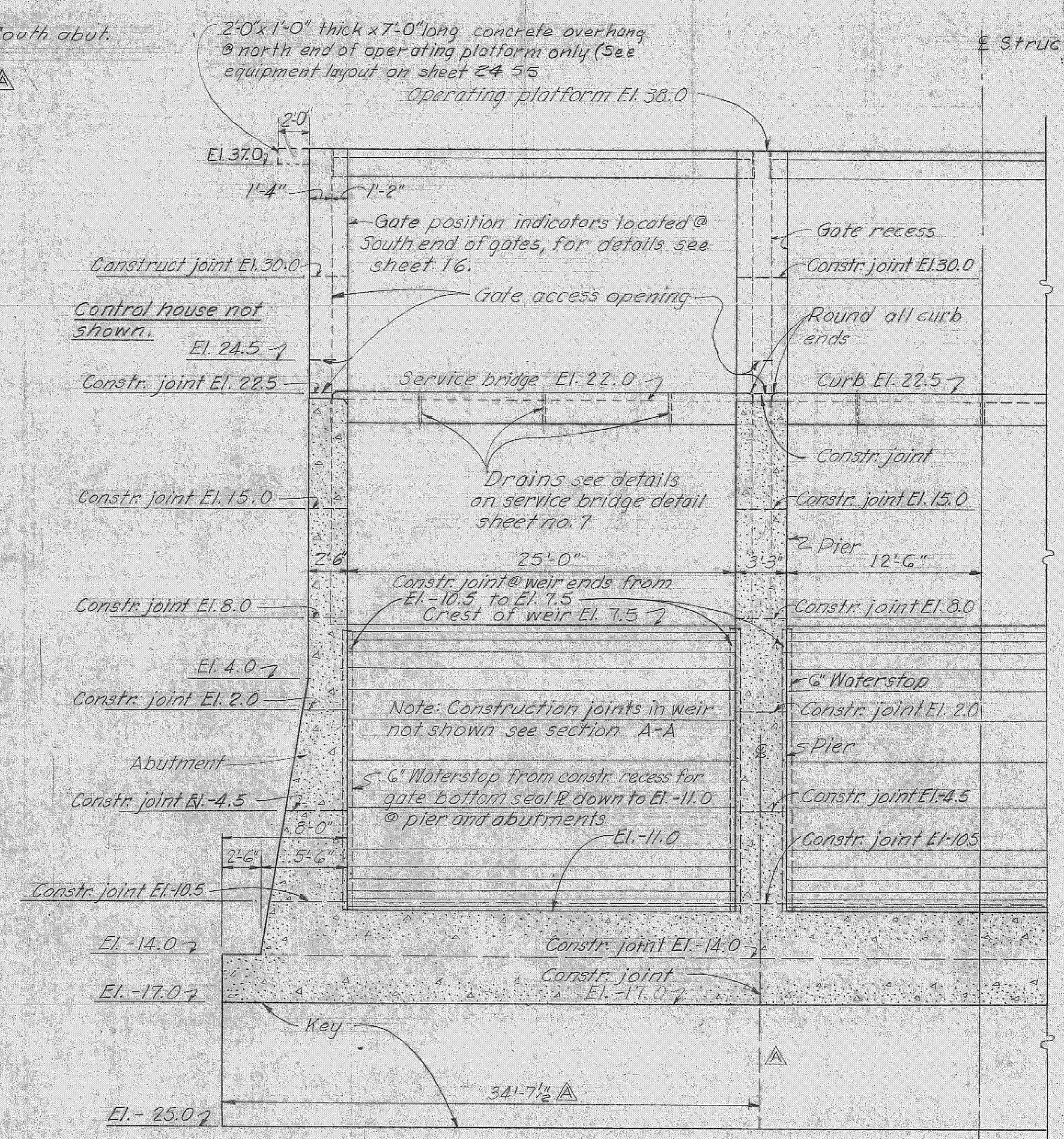
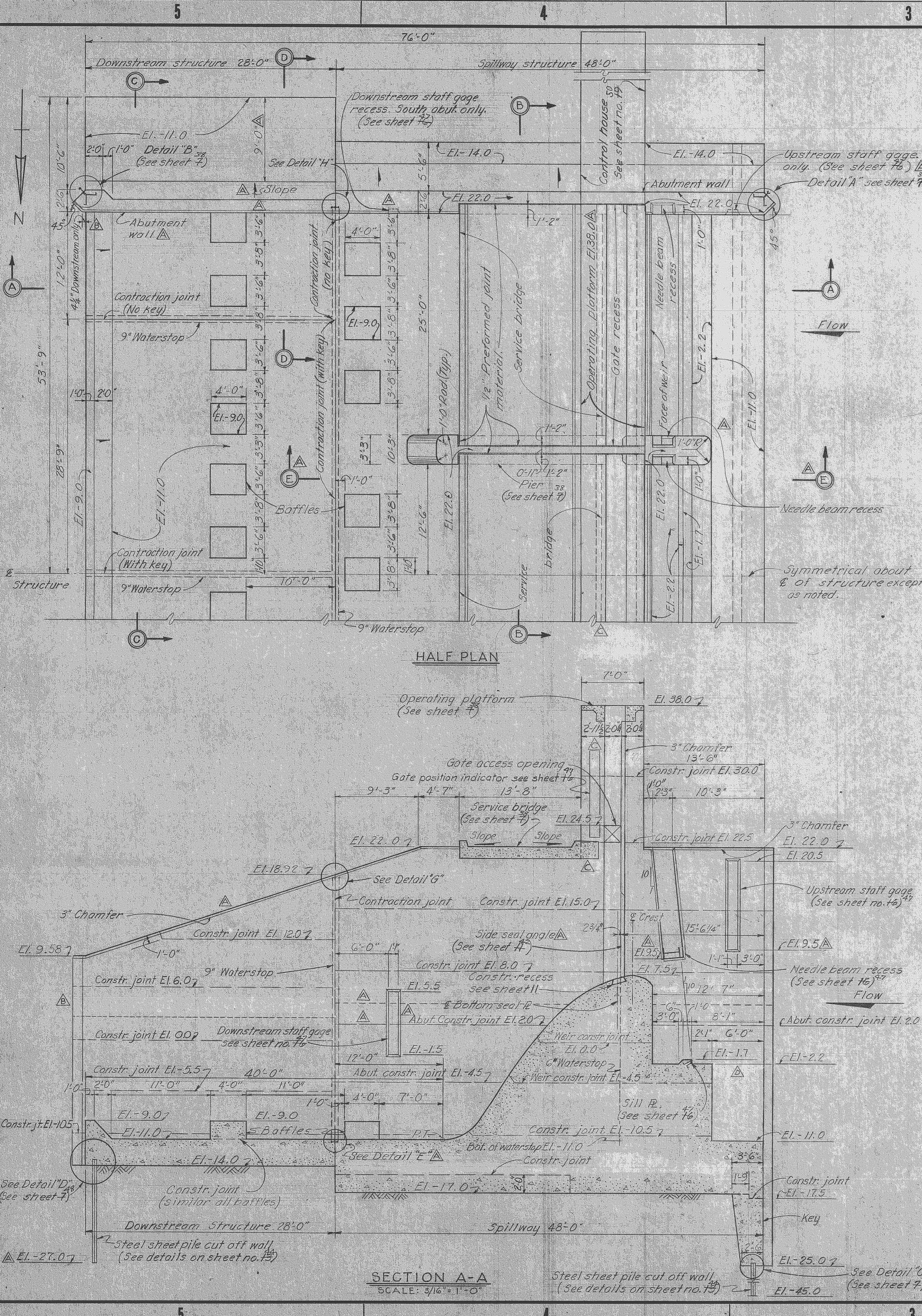
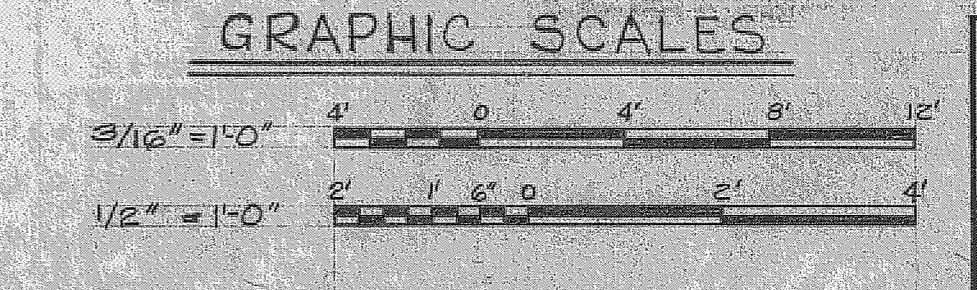


REVISIONS					
NO.	SYM.	ZONE	DESCRIPTION	DATE	APPROVED
30	Δ	A-5, B-3, E-5	REVISED TO CONFORM TO AMENDMENT NO. 2, TO CONTRACT NO. 496-29-370	5-16-66	WJR
2	Δ	A-5, B-3	REVISED DOWNSTREAM ABUTMENT TO ACCOMPANY MOD. TO CONTRACT CIV. ENG. 66-109	9-2-66	WJR
3	Δ	A-5, B-3	REVISED LOCATION OF GATE POSITION INDICATOR AND SERVICE BRIDGE TO ACCOMPANY CONTRACT NO. 66-109	11-23-66	WJR
7	Δ	A-4	REVISED INDICATION OF TOP OF OPERATING PLATFORM IN SECTION A-A TO ACCY MOD. TO CONTRACT NO. 66-109	1-2-67	WJR



SAFETY ON THIS JOB DEPENDS ON YOU

RECORD DRAWING NOTE
"Shall be," "Provide," "Install," "Remove," etc., indicates work was accomplished under the contract.



- NOTES:
- ALL CONTRACTION JOINTS SHALL BE PAINTED WITH TWO COATS OF ASPHALTIC PAINT AT ALL ABUTTING SURFACES. COATING APPLIED TO CONTRACTION JOINTS WITH WATERSTOP SHALL BE APPLIED NOT CLOSER THAN 1" FROM THE WATERSTOP.
 - FOR "GENERAL MASONRY AND DESIGN NOTES" SEE SHEET 33.
 - SEE SHEET 2 FOR SECTION D-D AND E-E.
 - FOR REINFORCEMENT NOTES SEE SHEET 8-39.
 - SEE SHEET 46 FOR WATERSTOP DETAILS.

AS BUILT
U. S. ARMY ENGINEER DISTRICT, JACKSONVILLE
CORPS OF ENGINEERS
JACKSONVILLE, FLORIDA
CENTRAL AND SOUTHERN FLORIDA PROJECT
FOR FLOOD CONTROL AND OTHER PURPOSES
CANAL E4, SECTION 2
STRUCTURE-157
MASONRY-PLAN AND SECTIONS

H.H. O.J.A.K.
D.A.P.
8/70
8/70

NO. CIV. ENG. 06-123-86-66
DATED: 28 APRIL 1968
SCALE AS SHOWN
DATED: APRIL 1966
SIZE DWG. NO. F
SHEET 37 OF 72