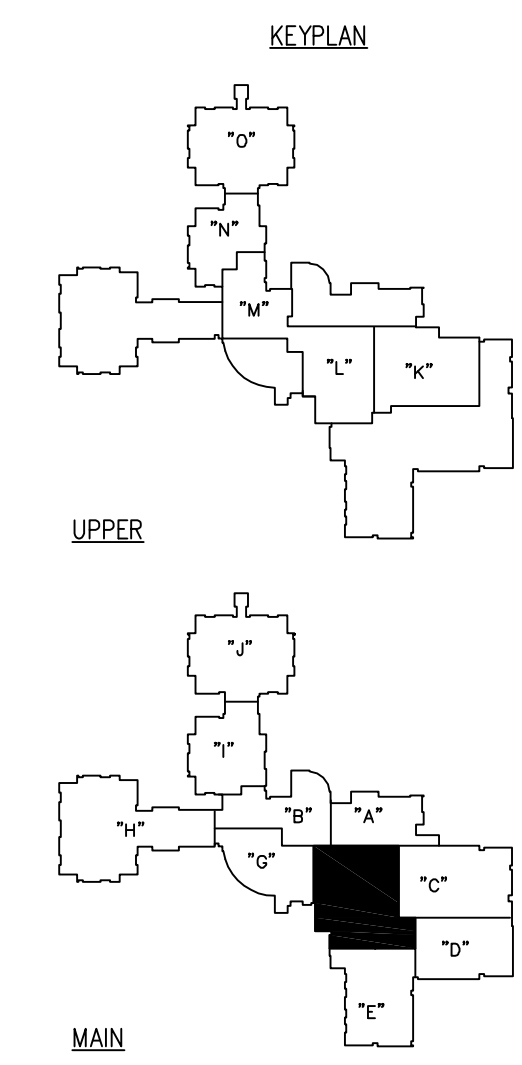
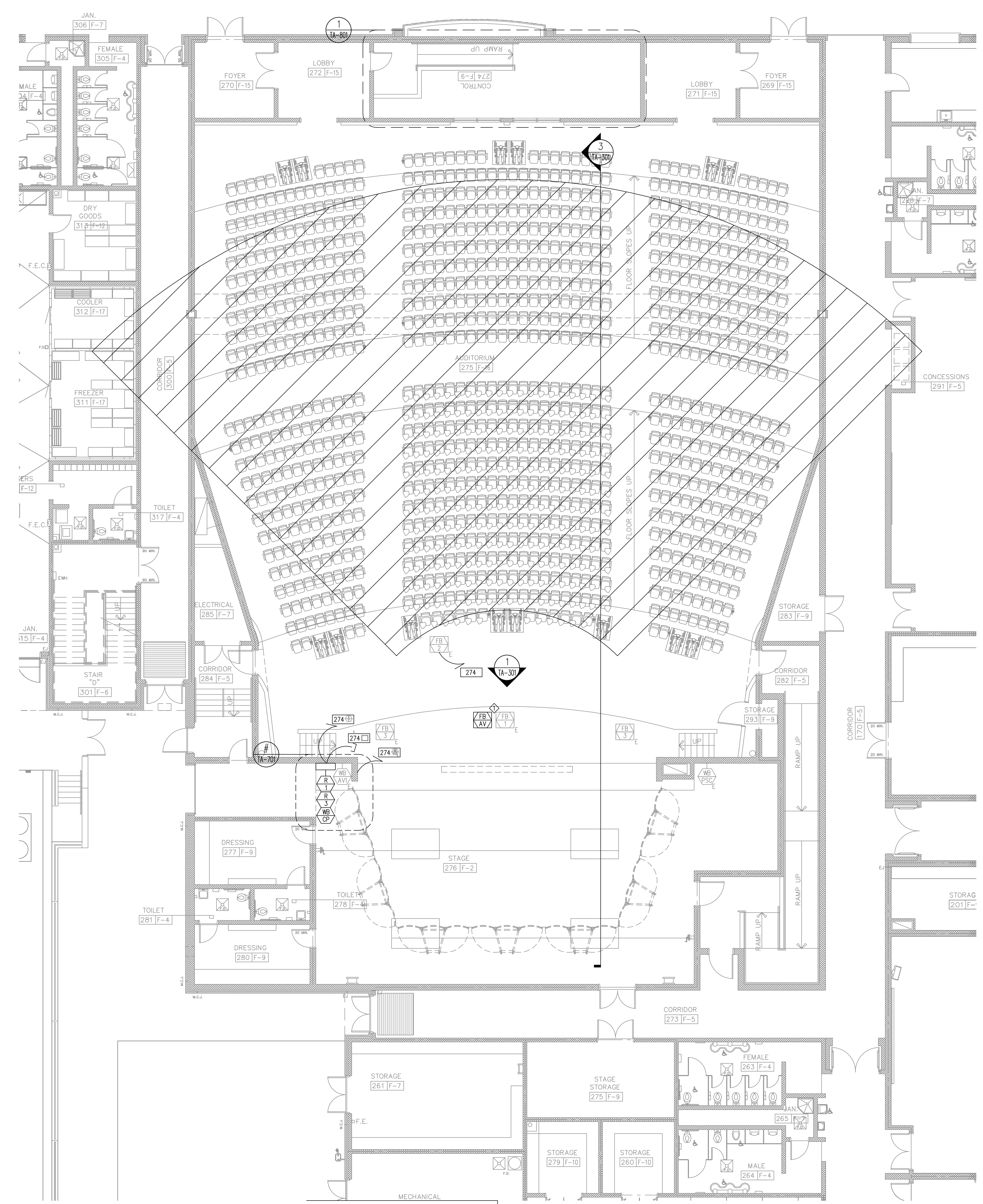




THORBURN ASSOCIATES
 ACUSTICAL, TECHNOLOGY, AND LIGHTING DESIGN
 2500 Gateway Centre Blvd. Suite 800
 Morrisville, NC 27560 919.463.9995
 San Francisco Area Office : 510.886.7826
 Los Angeles Area Office : 818.569.0224
 Orlando Area Office : 818.535.1180
 Charlotte Area Office : 704.334.1040
 COPYRIGHT © 2020 THORBURN ASSOCIATES INC.

NOTES:
 1. REPLACE EXISTING STAGE FLOOR BOX.



**SOUTH POINTE HS AUDITORIUM
 AUDIOVISUAL SYSTEM**

NO.	REVISION	DATE

AUDIOVISUAL DESIGN
 100% CONSTRUCTION
 DOCUMENTS

AV FLOOR PLAN -
 AREA "F"

DESIGNED KJE	PROJECT # 19064	TA-101
DRAWN DLL	SCALE AS NOTED	
CHECKED SJT	DATE 4-29-2020	

FLOOR PLAN - AREA "F"
 SCALE: 1/8" = 1'-0"

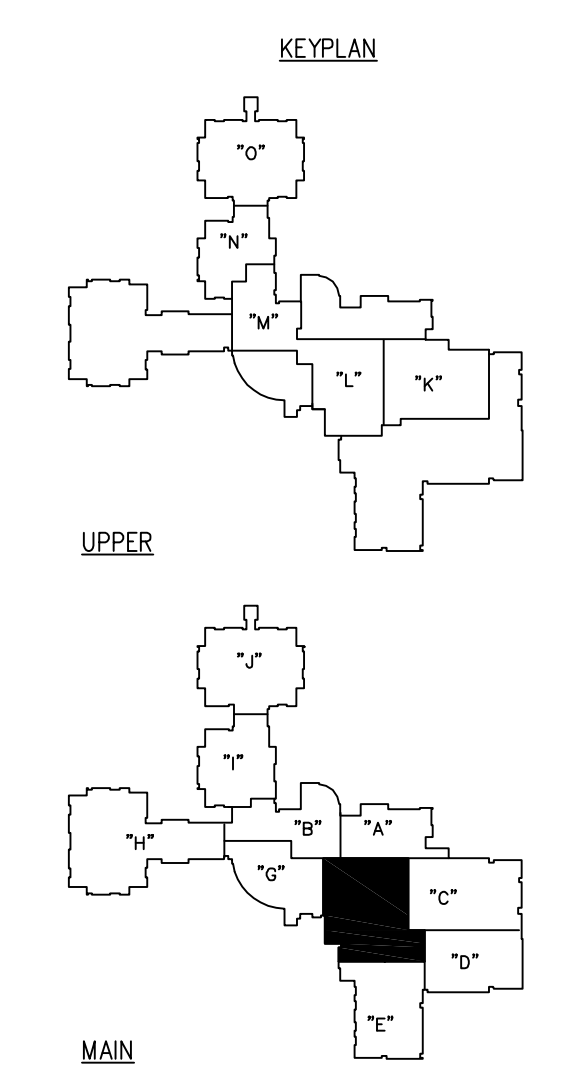
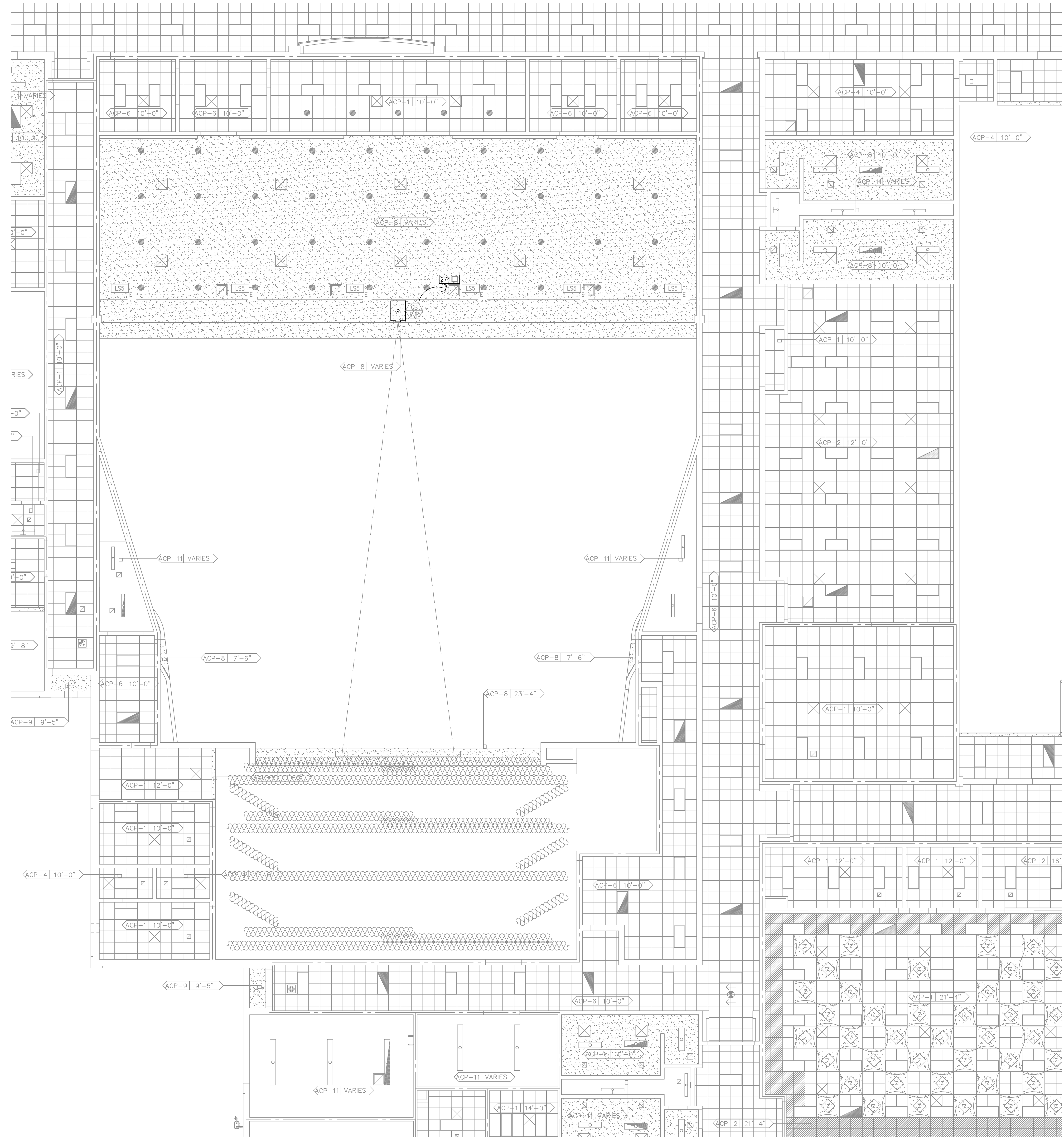
1

1" = 10'-0"
 1" = 4'-0"
 1" = 8'-0"
 1" = 1'-0"
 User Name : Derek Data\Time : Wed, 29 Apr 2020 - 2:56pm\Name : C:\Users\Derek\AppData\Local\Temp\AcPublish\19064 TA-10.dwg



THORBURN ASSOCIATES
 ACUSTICAL, TECHNOLOGY, AND LIGHTING DESIGN
 2500 Gateway Centre Blvd. Suite 800
 Morrisville, NC 27560 919.463.9995
 San Francisco Area Office : 510.886.7826
 Los Angeles Area Office : 818.569.0234
 Orlando Area Office : 818.535.1180
 Charlotte Area Office : 704.334.1040
 COPYRIGHT © 2020 THORBURN ASSOCIATES INC.

SOUTH POINTE HS AUDITORIUM AUDIOVISUAL SYSTEM



REFLECTED CEILING PLAN - AREA "F"
 SCALE: 1/8" = 1'-0"

NO.	REVISION	DATE

AUDIOVISUAL DESIGN
 100% CONSTRUCTION
 DOCUMENTS

AV REFLECTED CEILING PLAN -
 AREA "F"

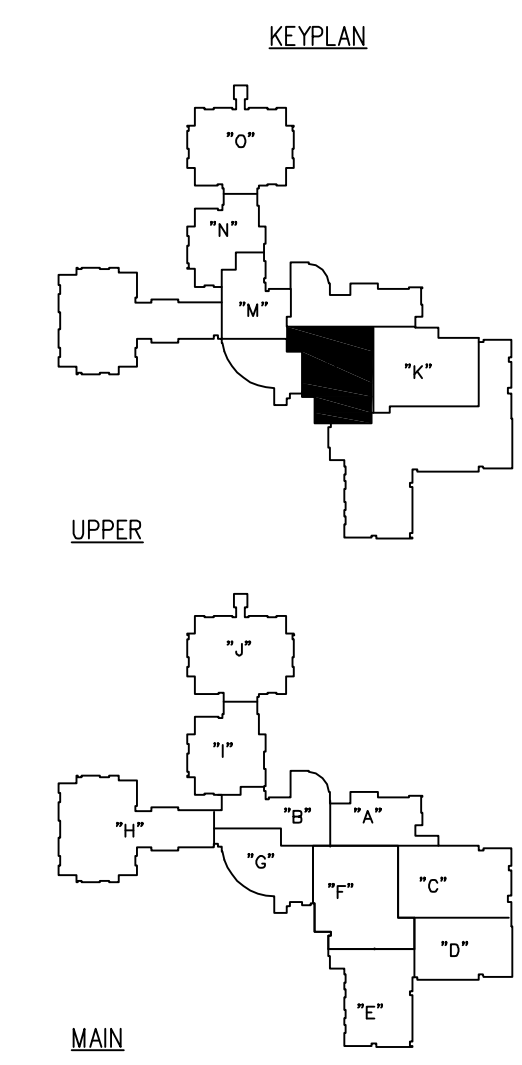
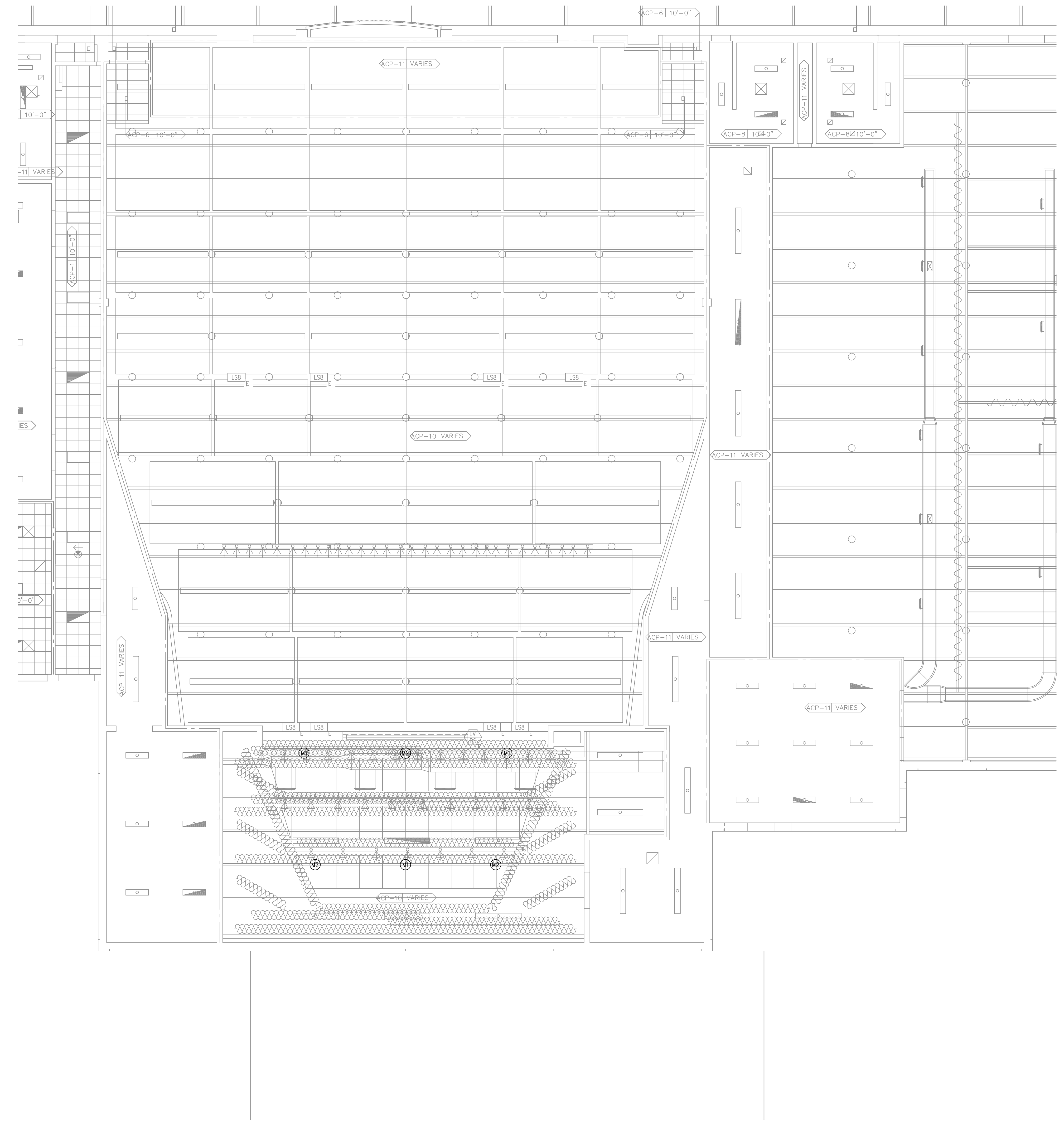
DESIGNED KJE	PROJECT # 19064	TA-201
DRAWN DLL	SCALE AS NOTED	
CHECKED SJT	DATE 4-29-2020	

User Name : Derek.Date\Time : Wed, 29 Apr 2020 - 2:56PM\Name : C:\Users\Derek\AppData\Local\Temp\AcP\Publin_12696\19064_TA-201.dwg
 1" = 1'-0"
 1" = 8'-0"
 1" = 4'-0"
 1" = 10'-0"



THORBURN ASSOCIATES
 ACOUSTICAL, TECHNOLOGY, AND LIGHTING DESIGN
 2500 Gateway Centre Blvd. Suite 800
 Morrisville, NC 27560 919.463.9995
 San Francisco Area Office : 510.886.7826
 Los Angeles Area Office : 818.569.9234
 Orlando Area Office : 818.535.1180
 Charlotte Area Office : 704.334.1040
 COPYRIGHT © 2020 THORBURN ASSOCIATES INC.

SOUTH POINTE HS AUDITORIUM AUDIOVISUAL SYSTEM



1" = 10'-0"
 1" = 4'-0"
 1" = 8'-0"
 1" = 1'-0"
 User Name : Bereki Dada\Tms : Wed, 29 Apr 2020 - 2:56PM Name : C:\Users\Bereki\AppData\Local\Temp\AcPublish_12696\19064 TA-202.dwg

REFLECTED CEILING PLAN - AREA "F"
 SCALE: 1/8" = 1'-0"

NO.	REVISION	DATE

AUDIOVISUAL DESIGN
 100% CONSTRUCTION
 DOCUMENTS

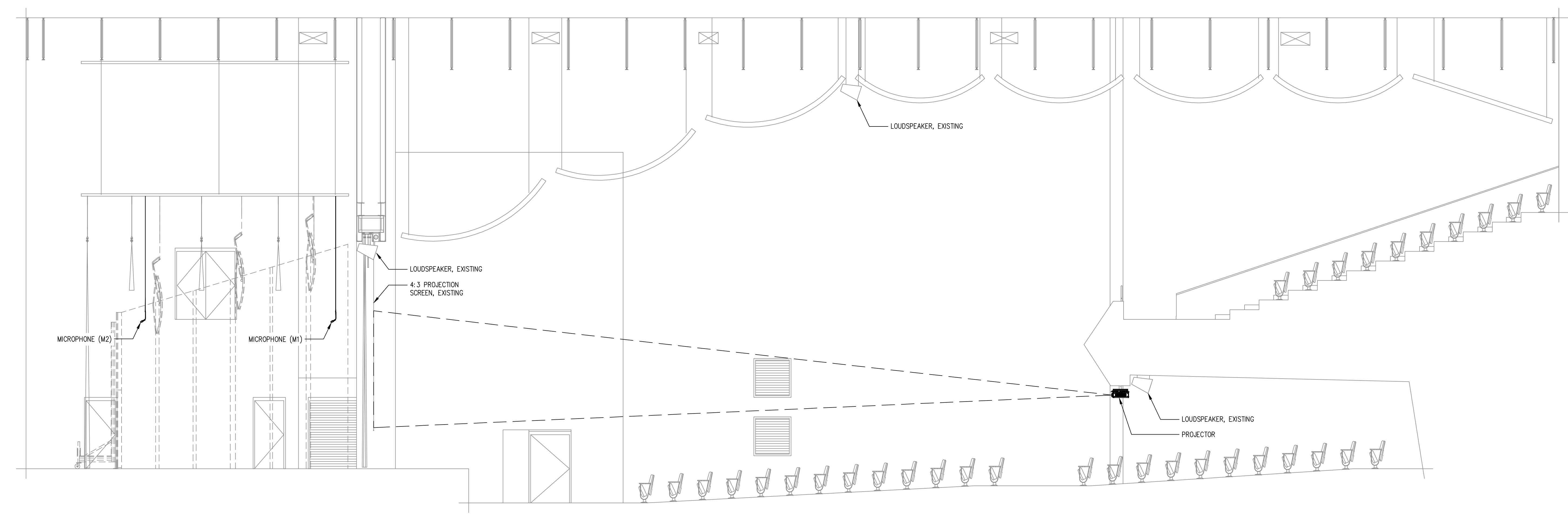
AV REFLECTED CEILING PLAN -
 AREA "L"

DESIGNED KJE	PROJECT # 19064	TA-202
DRAWN DLL	SCALE AS NOTED	
CHECKED SJT	DATE 4-29-2020	



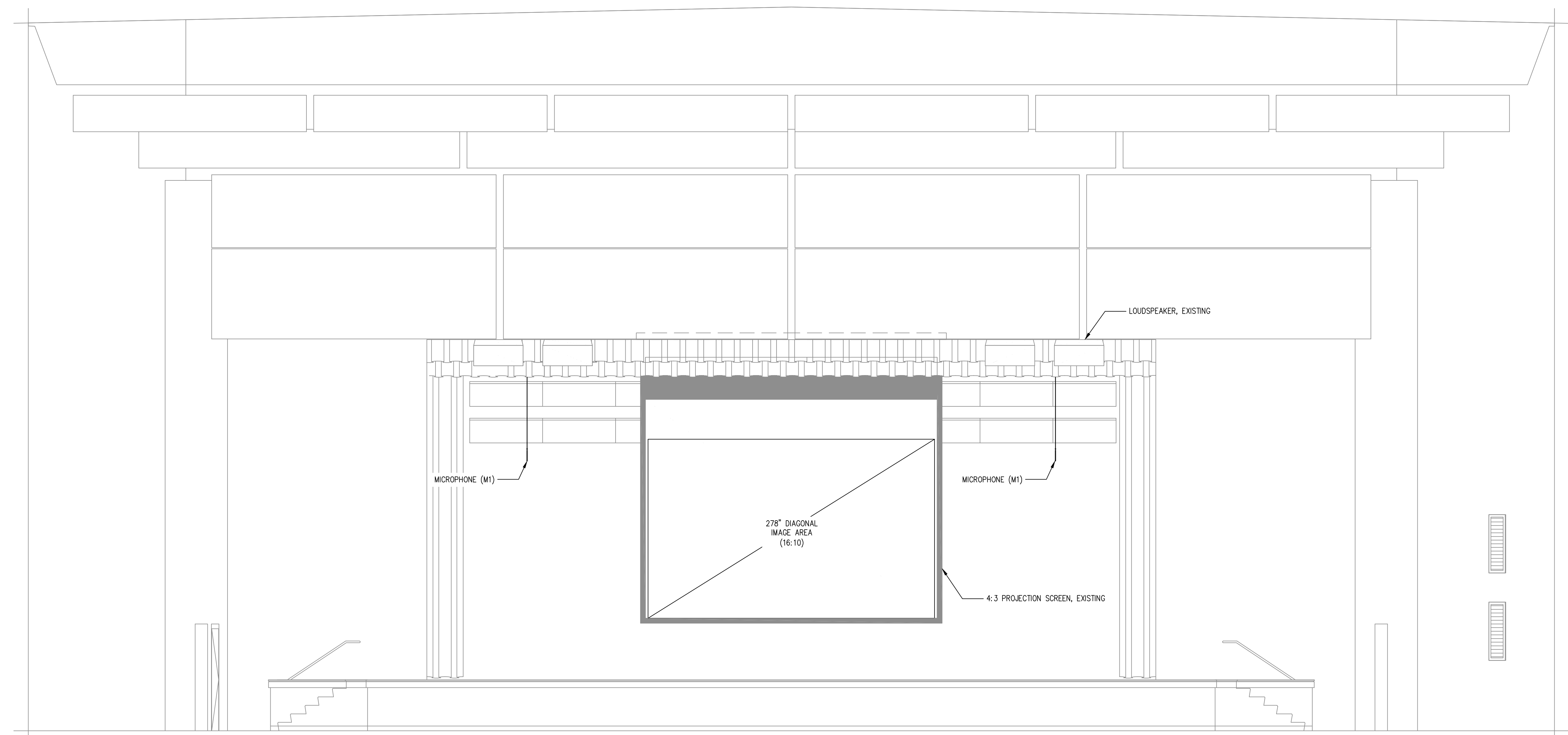
THORBURN ASSOCIATES
 ACOUSTICAL, TECHNOLOGY, AND LIGHTING DESIGN
 2500 Gateway Centre Blvd. Suite 800
 Morrisville, NC 27560 919.463.9995
 San Francisco Area Office : 510.886.7826
 Los Angeles Area Office : 818.569.9234
 Orlando Area Office : 818.535.1180
 Charlotte Area Office : 704.334.1040
 COPYRIGHT © 2020 THORBURN ASSOCIATES INC.

**SOUTH POINTE HS AUDITORIUM
 AUDIOVISUAL SYSTEM**



AUDITORIUM / STAGE SECTION
 SCALE: 3/16" = 1'-0"

3



AUDITORIUM / STAGE FRONT ELEVATION
 SCALE: 1/4" = 1'-0"

1

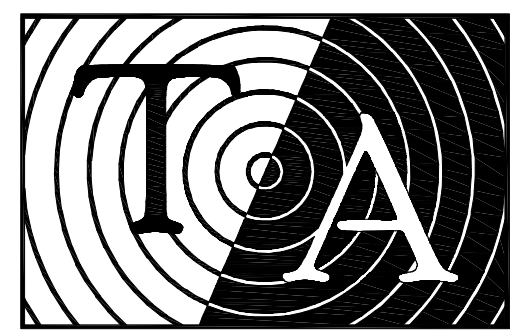
NO.	REVISION	DATE

AUDIOVISUAL DESIGN
 100% CONSTRUCTION
 DOCUMENTS

SECTIONS AND
 ELEVATIONS

DESIGNED KJE	PROJECT # 19064	TA-301
DRAWN DLL	SCALE AS NOTED	
CHECKED SJT	DATE 4-29-2020	

User Name : Derek Data\Time : Wed, 29 Apr 2020 - 2:56PM Name : C:\Users\Derek\AppData\Local\Temp\AcPublish_12696\19064 TA-301.dwg
 1" = 10'-0"
 1" = 4'-0"
 1" = 8'-0"
 1" = 1'-0"

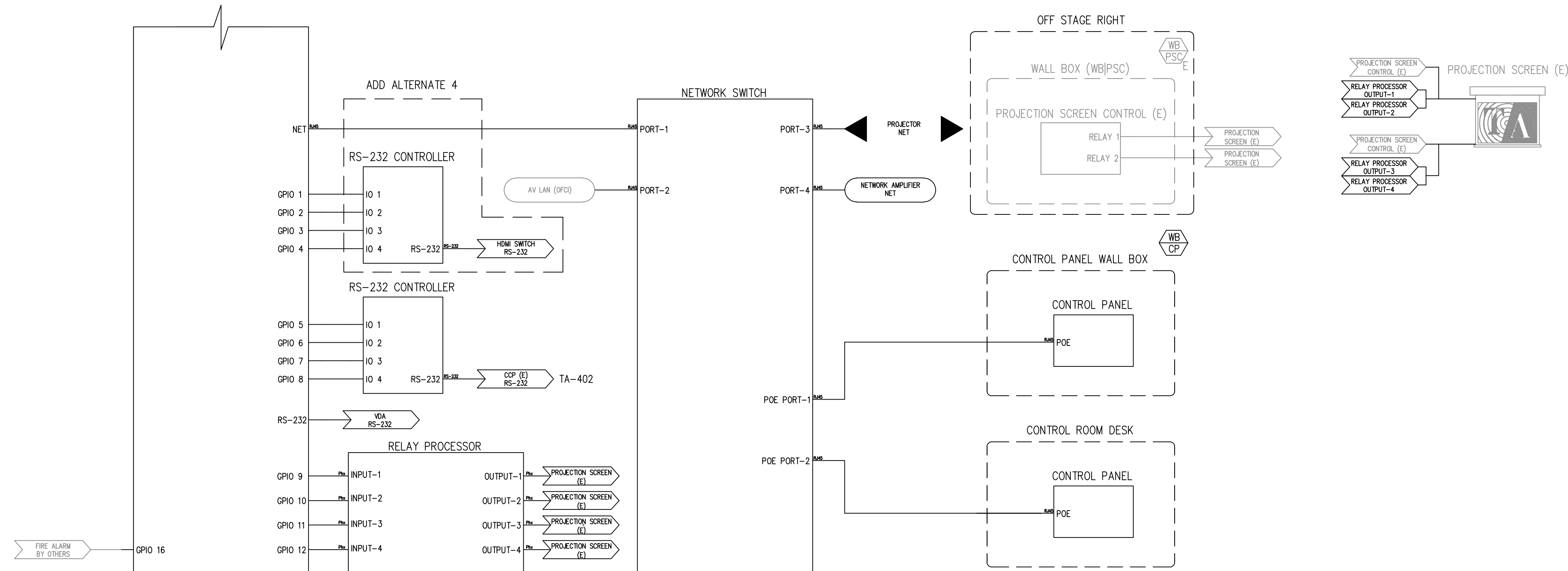


THORBURN ASSOCIATES
ACOUSTICAL, TECHNOLOGY, AND LIGHTING DESIGN
2500 Gateway Centre Blvd. Suite 800
Morrisville, NC 27560 919.463.9995
San Francisco Area Office : 510.886.7826
Los Angeles Area Office : 818.669.0234
Orlando Area Office : 818.535.1180
Charlotte Area Office : 704.334.1040
COPYRIGHT © 2020 THORBURN ASSOCIATES INC.

SOUTH POINTE HS AUDITORIUM AUDIOVISUAL SYSTEM

1" = 10'-0"
1" = 4'-0"
1" = 8'-0"
1" = 1'-0"

DIGITAL SIGNAL PROCESSOR AND CONTROLLER

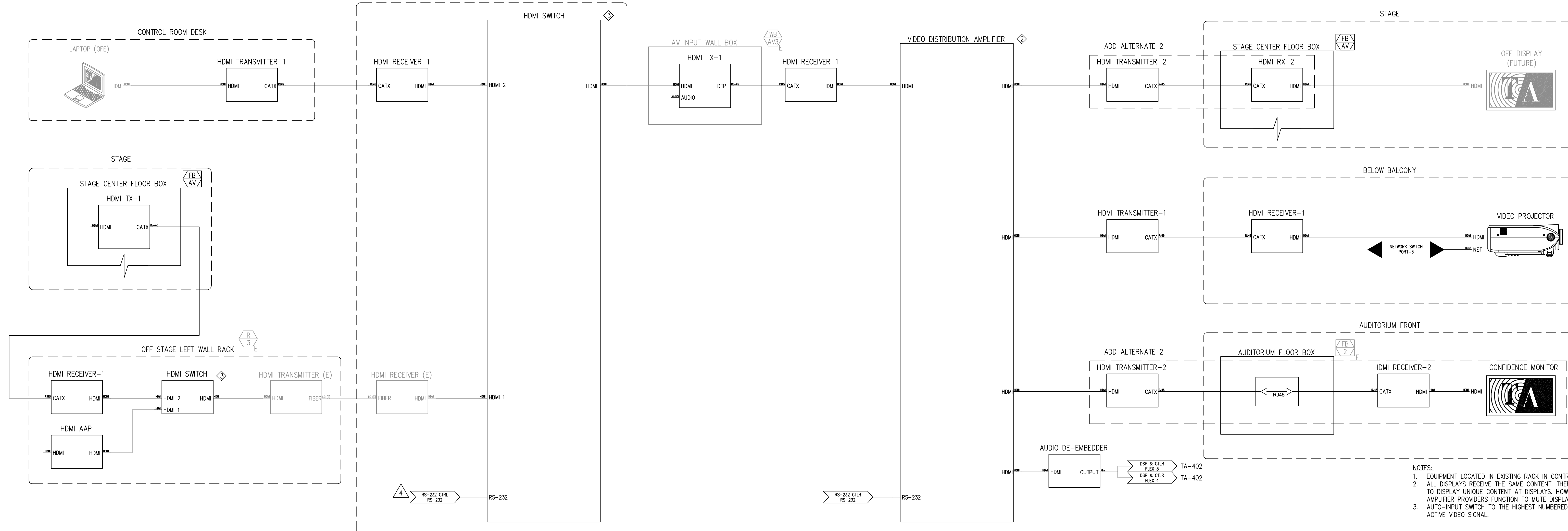


NOTES:
1. EQUIPMENT LOCATED IN EXISTING RACK IN CONTROL (274), UON.

CONTROL FUNCTIONAL

1

CONTROL ROOM WALL RACK



NOTES:
1. EQUIPMENT LOCATED IN EXISTING RACK IN CONTROL (274), UON.
2. ALL DISPLAYS RECEIVE THE SAME CONTENT. THERE IS NO FUNCTION TO DISPLAY UNIQUE CONTENT AT DISPLAYS. HOWEVER, DISTRIBUTION AMPLIFIER PROVIDERS FUNCTION TO MUTE DISPLAYS FOR PREVIEW. AUTO-INPUT SWITCH TO THE HIGHEST NUMBERED INPUT WITH AN ACTIVE VIDEO SIGNAL.

VIDEO FUNCTIONAL

1

User Name : Derek Datta | Time : Wed, 29 Apr 2020 - 2:58pm | Name : C:\Users\Derek\AppData\Local\Temp\AcPublish_12696\19064 TA-401.dwg

NO.	REVISION	DATE

AUDIOVISUAL DESIGN
100% CONSTRUCTION DOCUMENTS

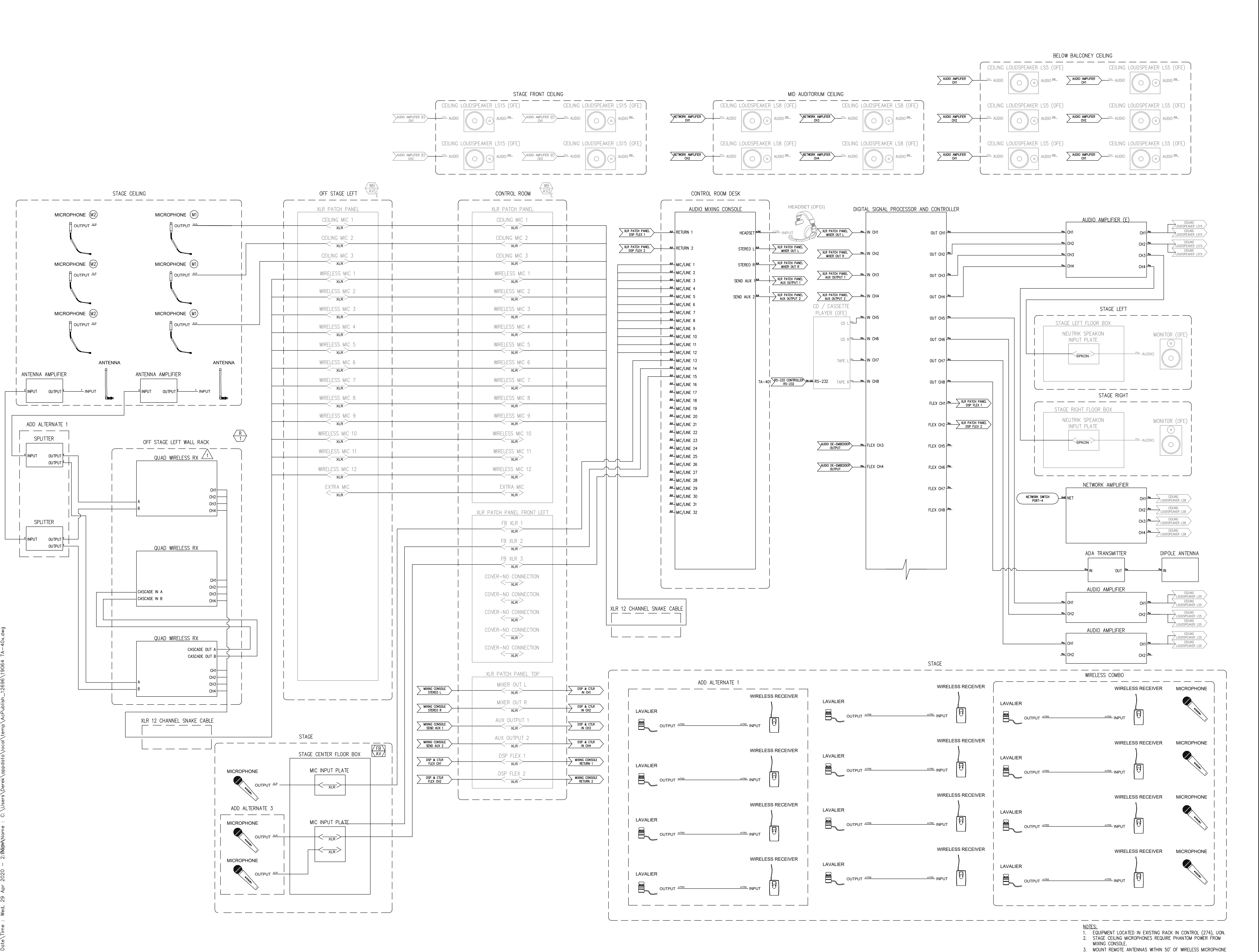
AUDITORIUM VIDEO AND CONTROL FUNCTIONALS

DESIGNED K.E	PROJECT # 19064	TA-401
DRAWN DLL	SCALE AS NOTED	
CHECKED SJT	DATE 4-29-2020	



THORBURN ASSOCIATES
 ACOUSTICAL, TECHNOLOGY, AND LIGHTING DESIGN
 2500 Gateway Centre Blvd. Suite 800
 Morrisville, NC 27560 919.463.9995
 San Francisco Area Office : 510.886.7826
 Los Angeles Area Office : 818.569.0284
 Orlando Area Office : 818.535.1180
 Charlotte Area Office : 704.334.1040
 COPYRIGHT © 2020 THORBURN ASSOCIATES INC.

**SOUTH POINTE HS AUDITORIUM
 AUDIOVISUAL SYSTEM**

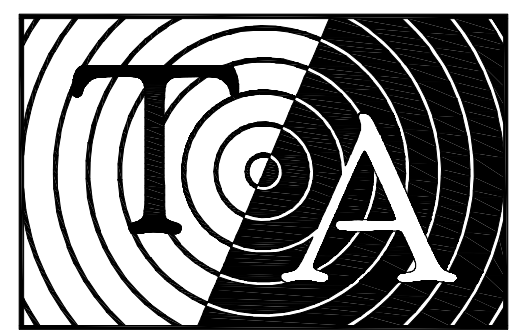


AUDIO FUNCTIONAL

- NOTES:
- EQUIPMENT LOCATED IN EXISTING RACK IN CONTROL (274), UON.
 - STAGE CEILING MICROPHONES REQUIRE PHANTOM POWER FROM MIXING CONSOLE.
 - MOUNT REMOTE ANTENNAS WITHIN 50' OF WIRELESS MICROPHONE RECEIVER.
 - CONFIRM SIGNAL TYPE FROM FIRE ALARM PROVIDED BY OTHERS. AV AUDIO SHALL MUTE DURING FIRE ALARM EVENT.

User Name : Derek Datta | Time : Wed, 29 Apr 2020 12:56PM | Name : C:\Users\Derek\appdata\local\temp\12696\19064 TA-402.dwg

NO.	REVISION	DATE
AUDIOVISUAL DESIGN 100% CONSTRUCTION DOCUMENTS		
AUDITORIUM AUDIO FUNCTIONALS		
DESIGNED K.E.	PROJECT # 19064	TA-402
DRAWN DLL	SCALE AS NOTED	
CHECKED SJT	DATE 4-29-2020	



THORBURN ASSOCIATES
 ACOUSTICAL, TECHNOLOGY, AND LIGHTING DESIGN
 2500 Gateway Centre Blvd. Suite 800
 Morrisville, NC 27560 919.463.9995
 San Francisco Area Office : 510.886.7826
 Los Angeles Area Office : 818.569.9234
 Orlando Area Office : 818.535.1180
 Charlotte Area Office : 704.334.1040
 COPYRIGHT © 2020 THORBURN ASSOCIATES INC.

SOUTH POINTE HS AUDITORIUM AUDIOVISUAL SYSTEM

NO.	REVISION	DATE

AUDIOVISUAL DESIGN
100% CONSTRUCTION
DOCUMENTS

RACK ELEVATIONS
AND DETAILS

DESIGNED KJE	PROJECT # 19064	TA-501
DRAWN DLL	SCALE AS NOTED	
CHECKED SJT	DATE 4-29-2020	

37	ID PLATE	1
36	RF LISTENING SYSTEM TX	2
35	SURGE SEQUENCER	3
34	BLANK	4
33	HDMI TX (X3) HDMI RX	5
32	VIDEO DA AUDIO DEEMBEDDER	6
31	AUDIO DSP & CONTROLLER	7
30	BLANK	8
29	BLANK	9
28	INTERCOM MASTER STATION (*)	10
27		11
26	MEDIA PLAYER (*)	12
25		13
24		14
23		15
22		16
21		17
20	BLANK (*)	18
19		19
18		20
17		21
16		22
15		23
14	BLANK (*)	24
13		25
12	BLANK	26
11	BLANK	27
10	BLANK	28
9		29
8	POWER AMPLIFIER (*)	30
7		31
6	AUDIO AMPLIFIER	32
5		33
4	AUDIO AMPLIFIER	34
3		35
2	AUDIO AMPLIFIER	36
1		37

FRONT

37		1
36		2
35		3
34		4
33		5
32		6
31	CABLE MANAGEMENT	7
30	NETWORK SWITCH	8
29	CABLE MANAGEMENT	9
28		10
27		11
26		12
25		13
24		14
23		15
22		16
21		17
20		18
19		19
18		20
17		21
16		22
15		23
14		24
13		25
12		26
11		27
10		28
9		29
8		30
7		31
6		32
5		33
4		34
3		35
2		36
1		37

REAR

NOTE:
1. (*) DENOTES EXISTING EQUIPMENT TO BE REUSED.

CONTROL ROOM RACK ELEVATION (EXISTING) UPDATED

SCALE: NTS

2	HDMI INPUTE HDMI AAP BLANK	1
1	BLANK	2

FRONT

2		1
1	HDMI SWITCH HDMI RX	2

REAR

VERTICLE VIDEO STAGE RACK ELEVATION (EXISTING)

SCALE: NTS

2	HDMI OUTPUTE BLANK BLANK	1
1	BLANK	2

FRONT

2		1
1	HDMI SWITCH HDMI RX	2

REAR

VERTICLE CONTROL ROOM RACK ELEVATION (EXISTING)

SCALE: NTS

12	CABLE MGMT		CABLE MGMT	1
11				2
10				3
9				4
8				5
7				6
6				7
5				8
4		QUAD WIRELESS RX		9
3		QUAD WIRELESS RX		10
2		QUAD WIRELESS RX		11
1		SURGE PROTECTOR		12

FRONT

12	CABLE MGMT		CABLE MGMT	1
11				2
10				3
9				4
8				5
7				6
6				7
5				8
4				9
3				10
2				11
1				12

REAR

STAGE WALL MOUNT RACK ELEVATION

SCALE: NTS

37		1
36	BLANK	2
35		3
34		4
33	SEQUENTIAL CONTROLLER	5
32		6
31	AUDIO MATRIX PROCESSOR	7
30		8
29		9
28	INTERCOM MASTER STATION	10
27		11
26	MEDIA PLAYER	12
25		13
24		14
23		15
22		16
21		17
20	BLANK	18
19		19
18		20
17		21
16		22
15		23
14		24
13		25
12		26
11		27
10		28
9		29
8	POWER AMPLIFIER	30
7		31
6		32
5	BLANK	33
4		34
3		35
2		36
1	AUDIO AMPLIFIER	37

FRONT

37		1
36		2
35		3
34		4
33		5
32		6
31		7
30		8
29		9
28		10
27		11
26		12
25		13
24		14
23		15
22		16
21		17
20		18
19		19
18		20
17		21
16		22
15		23
14		24
13		25
12		26
11		27
10		28
9		29
8		30
7		31
6		32
5		33
4		34
3		35
2		36
1		37

REAR

CONTROL ROOM RACK ELEVATION (EXISTING) PRE-UPDATE

SCALE: NTS

1" = 10'-0"
1" = 4'-0"
1" = 8'-0"
1" = 1'-0"

User Name : Derek Data\Time : Wed, 29 Apr 2020 - 2:56PM Name : C:\Users\Derek\AppData\Local\Temp\icaPublish_12696\19064 TA-501.dwg



THORBURN ASSOCIATES
 ACOUSTICAL, TECHNOLOGY, AND LIGHTING DESIGN
 2500 Gateway Centre Blvd. Suite 800
 Morrisville, NC 27560 919.463.9995
 San Francisco Area Office : 510.886.7826
 Los Angeles Area Office : 818.569.9224
 Orlando Area Office : 818.535.1180
 Charlotte Area Office : 704.334.1040
 COPYRIGHT © 2020 THORBURN ASSOCIATES INC.

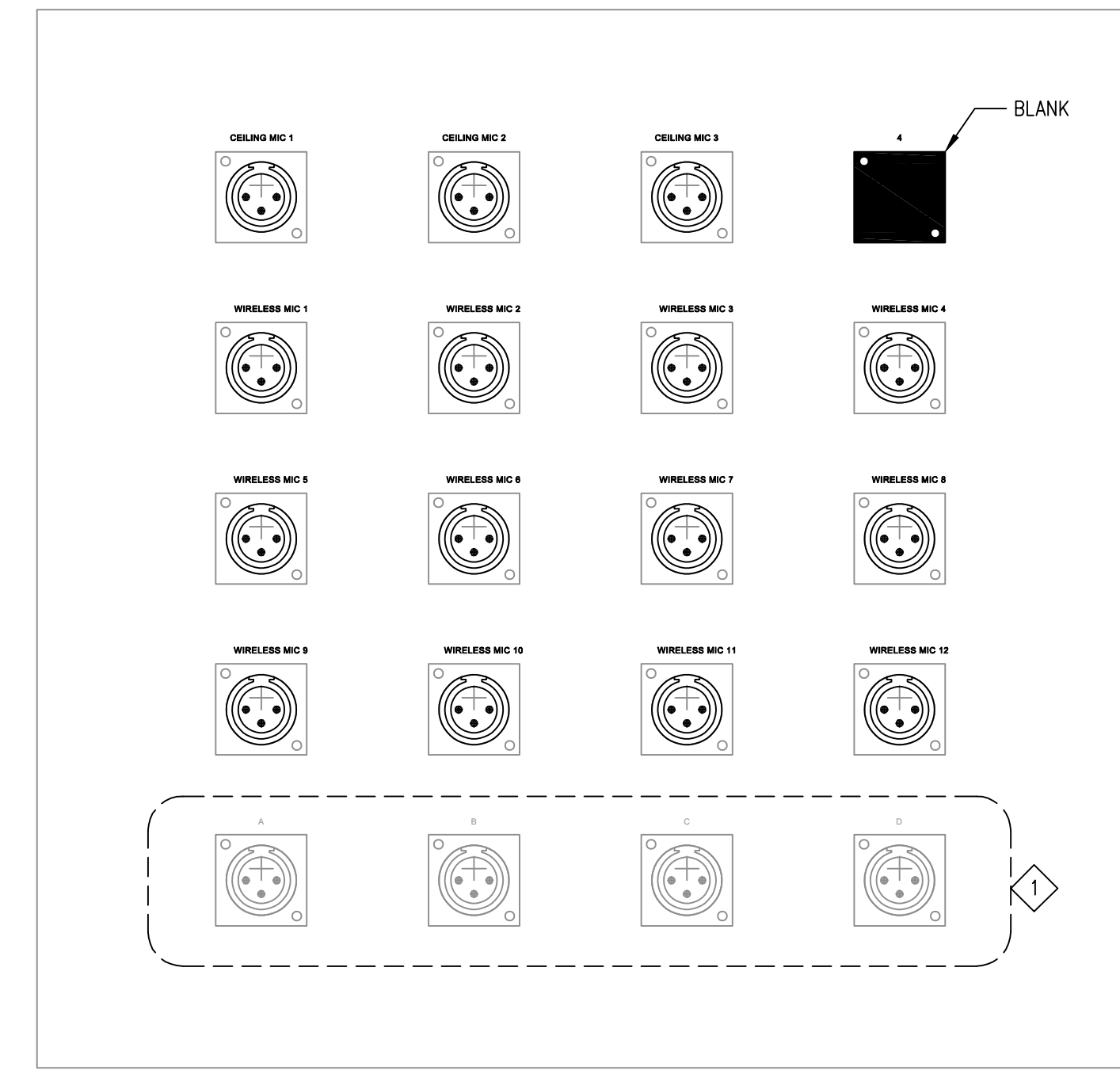
**SOUTH POINTE HS AUDITORIUM
 AUDIOVISUAL SYSTEM**

NO.	REVISION	DATE

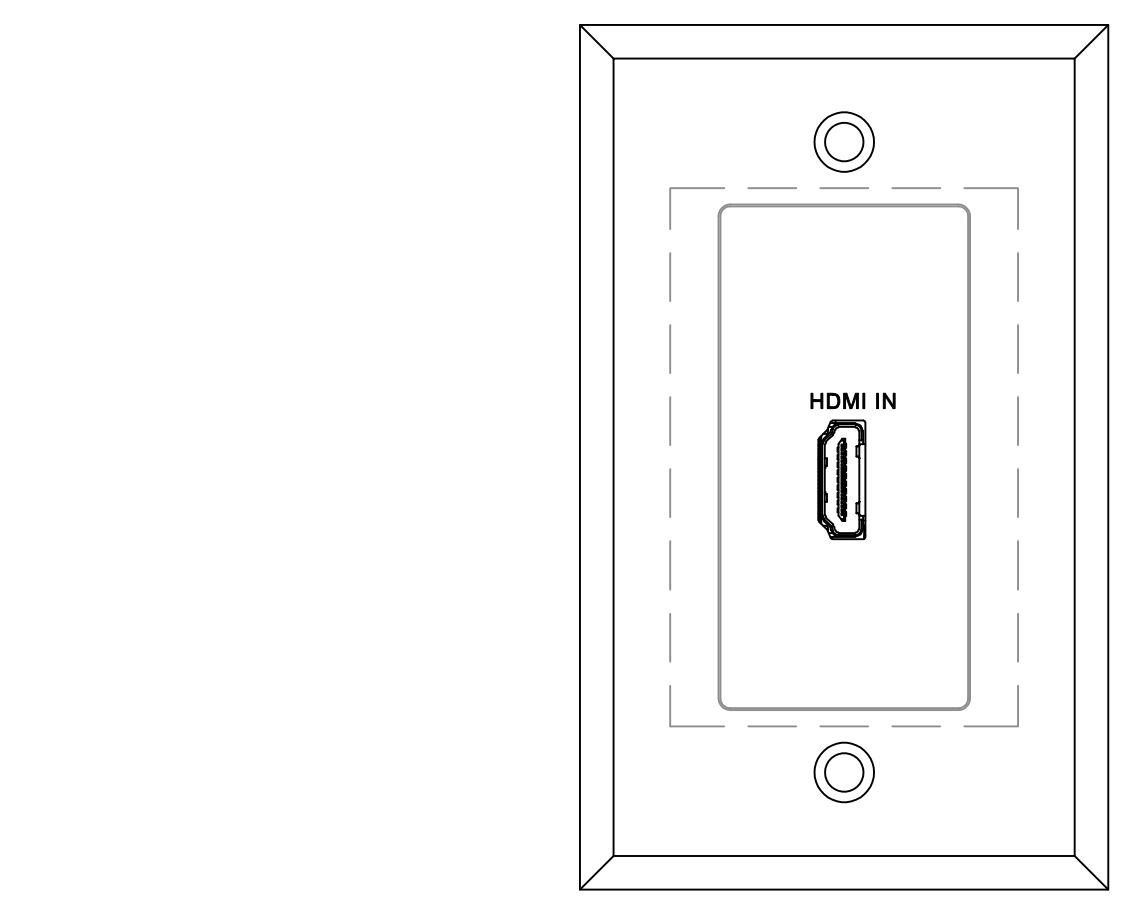
AUDIOVISUAL DESIGN
 100% CONSTRUCTION
 DOCUMENTS

INTERFACE PLATE
 DETAILS

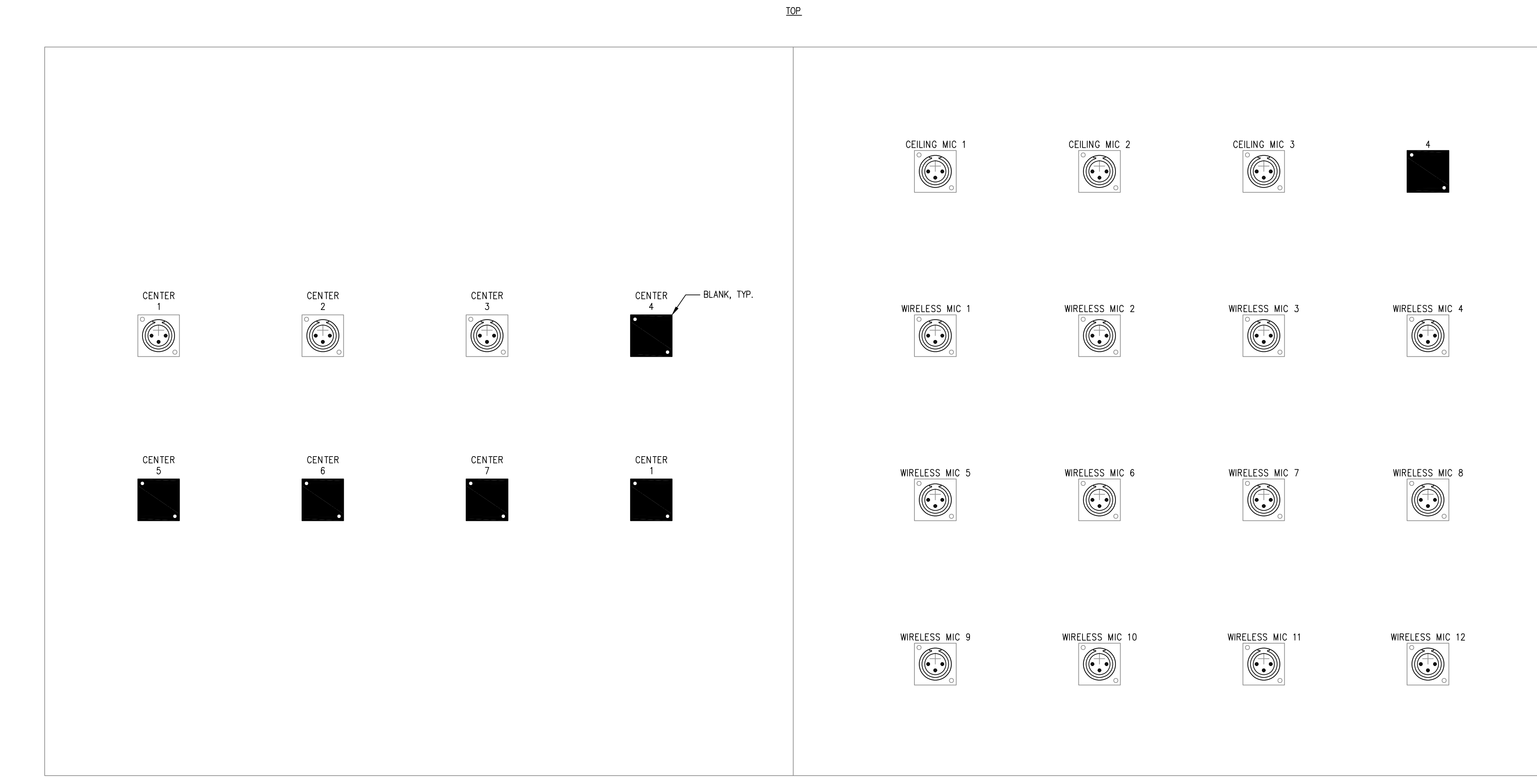
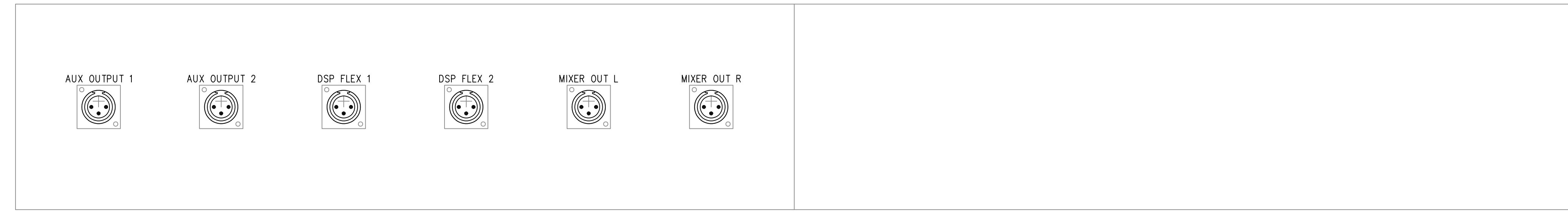
DESIGNED KJE	PROJECT # 19064	TA-601
DRAWN DLL	SCALE AS NOTED	
CHECKED SJT	DATE 4-29-2020	



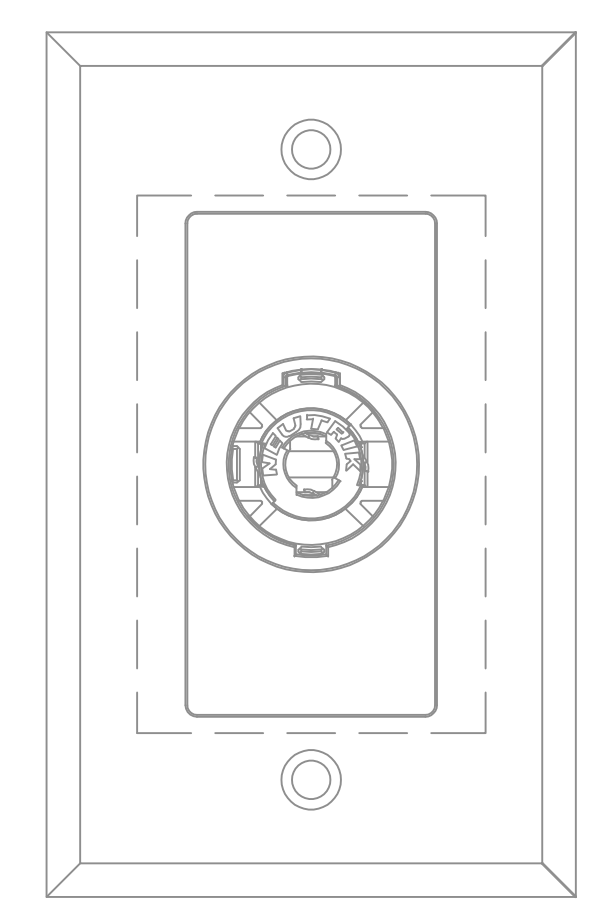
STAGE XLR PATCH PANEL INTERFACE PLATE DETAIL (EXISTING)
 SCALE: 6" = 1'-0"
 NOTE:
 1. FUNCTION OF XLR CONNECTORS A-D ARE NOT IN SCOPE.



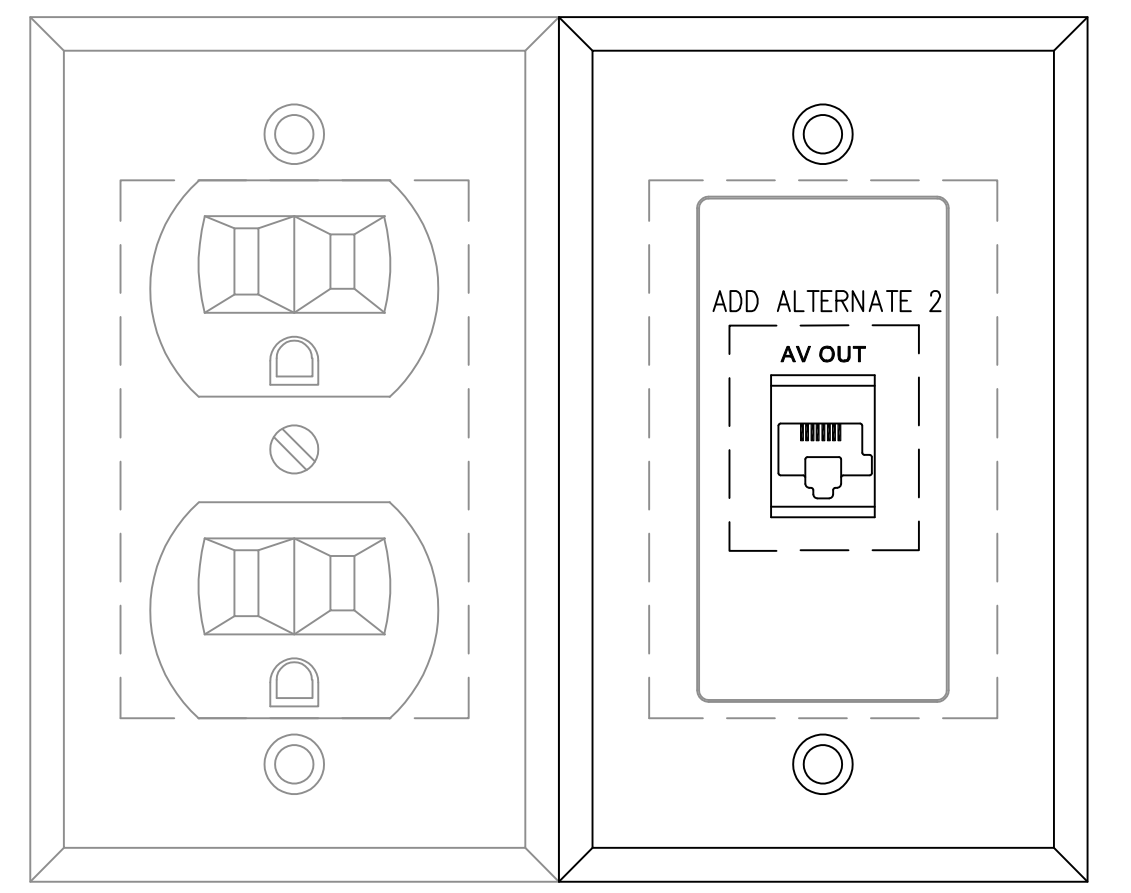
CONTROL ROOM AV INPUT PLATE
 SCALE: 1'-0" = 1'-0"



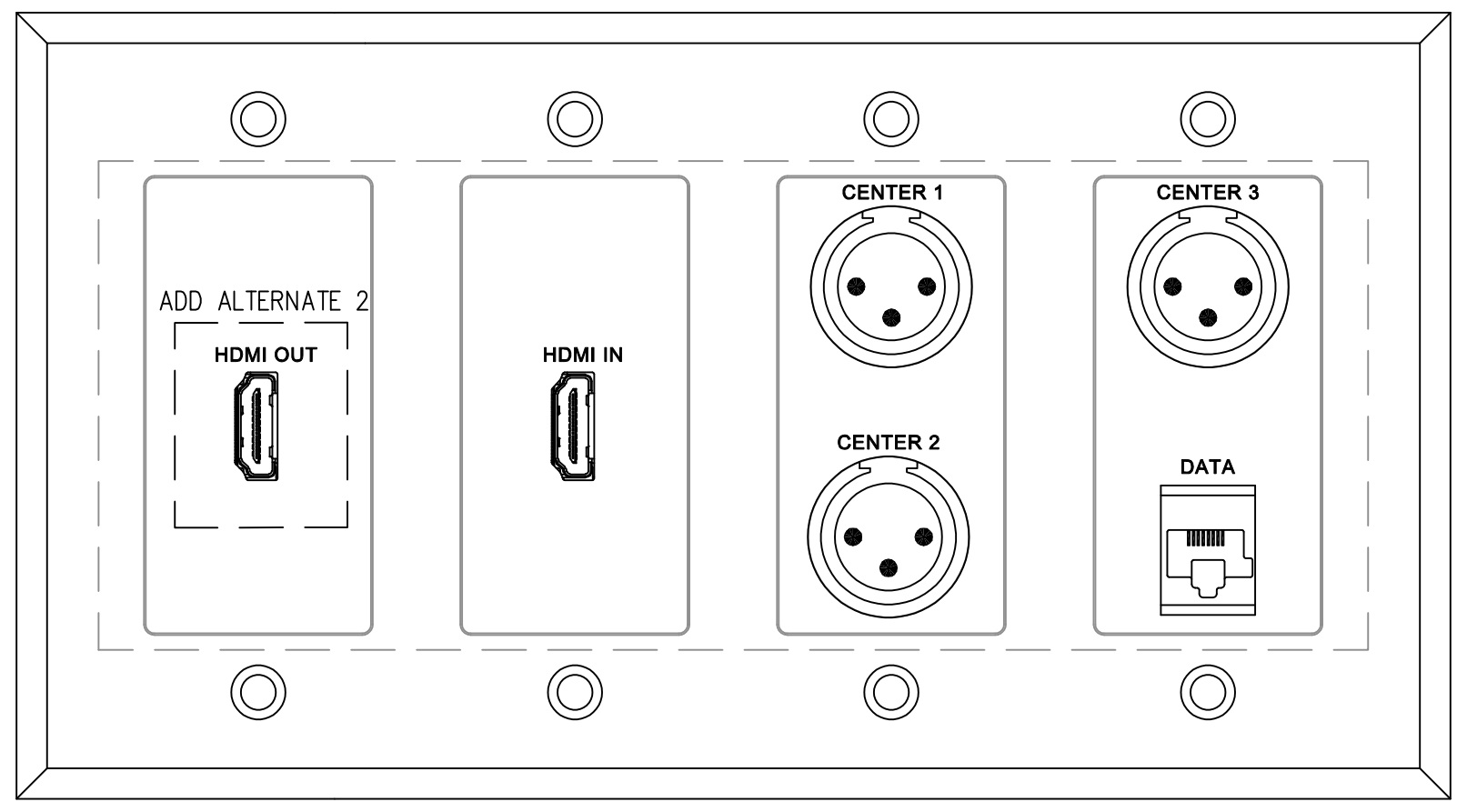
CONTROL ROOM XLR PATCH PANEL INTERFACE PLATE DETAIL (EXISTING)
 SCALE: 6" = 1'-0"



STAGE RIGHT AND LEFT FLOOR BOX INTERFACE PLATE DETAIL (EXISTING)
 SCALE: 1'-0" = 1'-0"



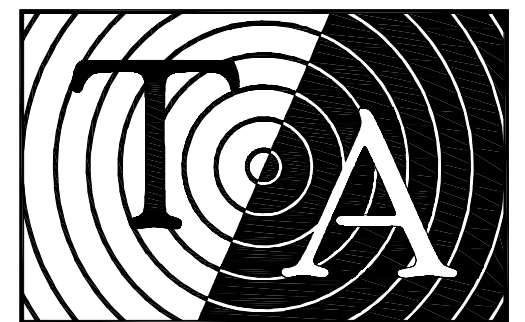
AUDITORIUM FLOOR BOX INTERFACE PLATE DETAIL
 SCALE: 1'-0" = 1'-0"



STAGE CENTER FLOOR BOX INTERFACE PLATE DETAIL
 SCALE: 1'-0" = 1'-0"

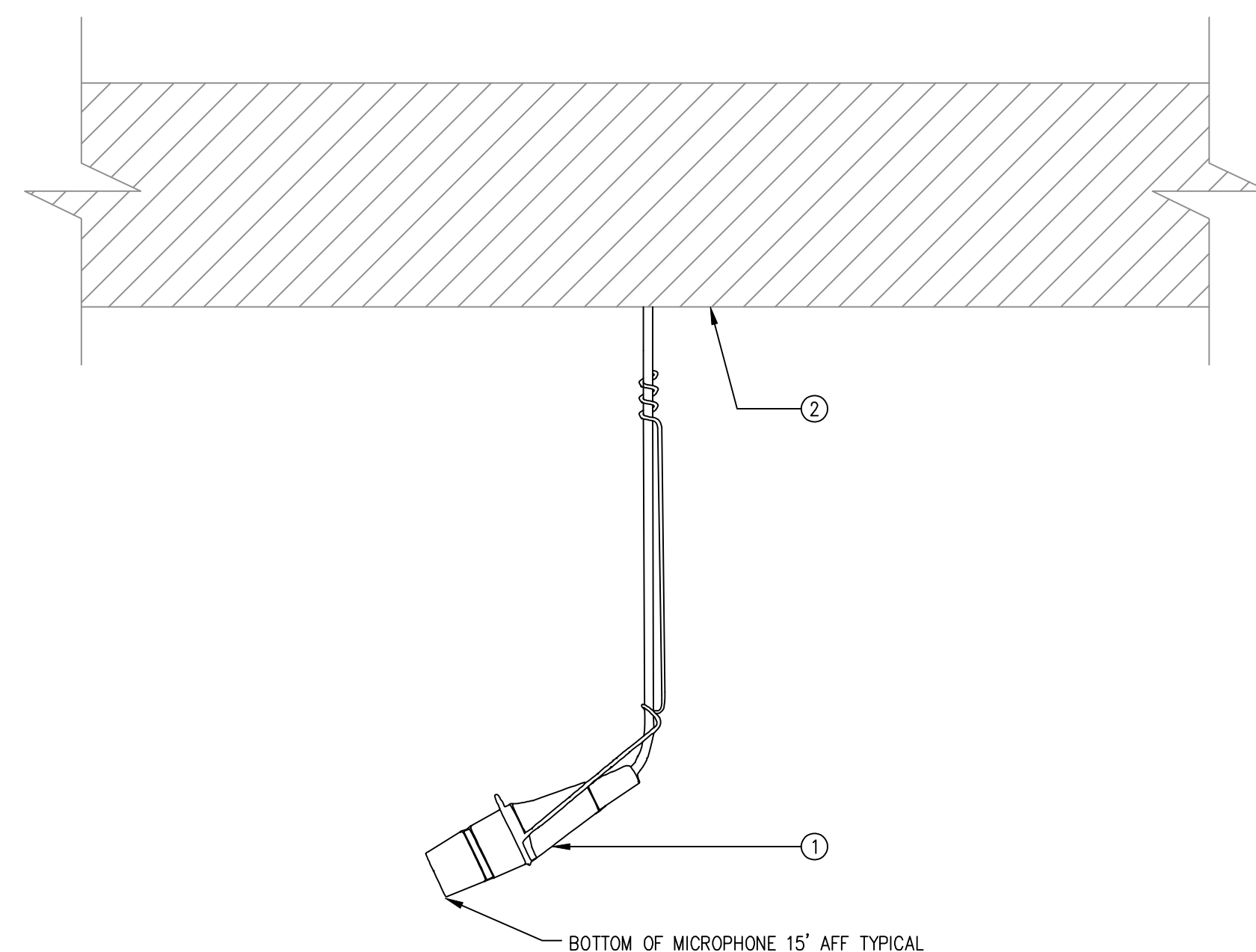
1" = 10'-0"
 1" = 4'-0"
 1" = 8'-0"
 1" = 1'-0"

User Name : Derek.Datta\Time : Wed, 29 Apr 2020 11:25:00 AM
 C:\Users\Derek.Datta\AppData\Local\Temp\AV2\Pub\19064 TA-601.dwg



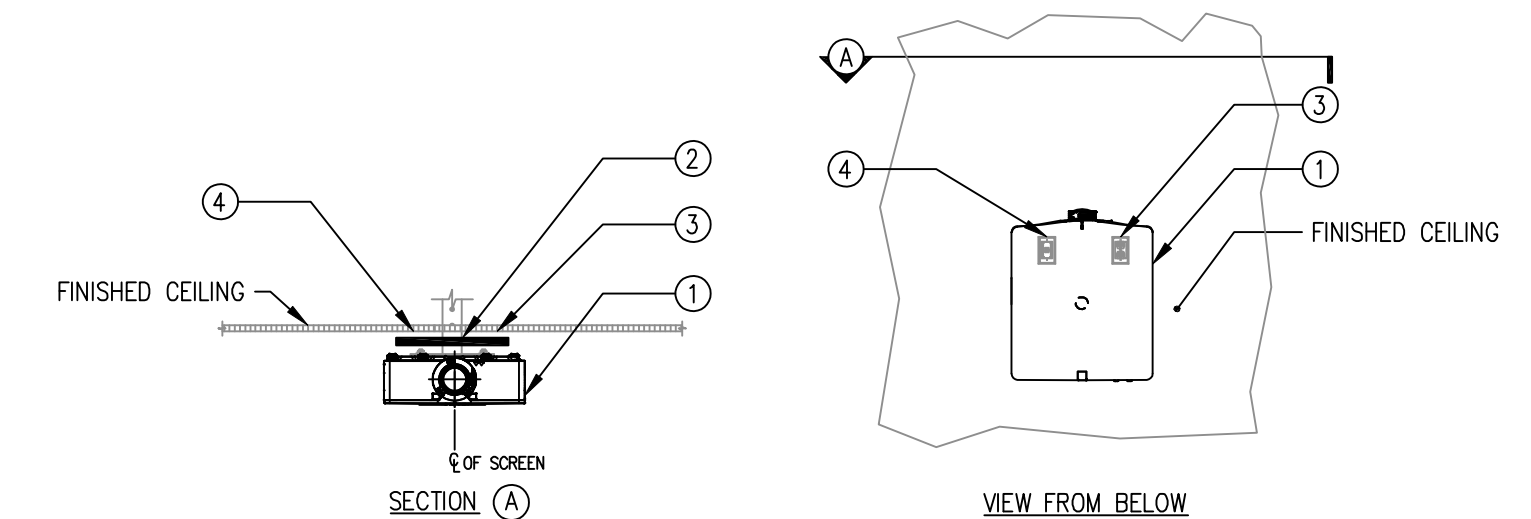
THORBURN ASSOCIATES
 ACUSTICAL, TECHNOLOGY, AND LIGHTING DESIGN
 2500 Gateway Centre Blvd. Suite 800
 Morrisville, NC 27560 919.463.9995
 San Francisco Area Office : 510.886.7826
 Los Angeles Area Office : 818.569.0234
 Orlando Area Office : 818.535.1180
 Charlotte Area Office : 704.334.1040
 COPYRIGHT © 2020 THORBURN ASSOCIATES INC.

SOUTH POINTE HS AUDITORIUM AUDIOVISUAL SYSTEM



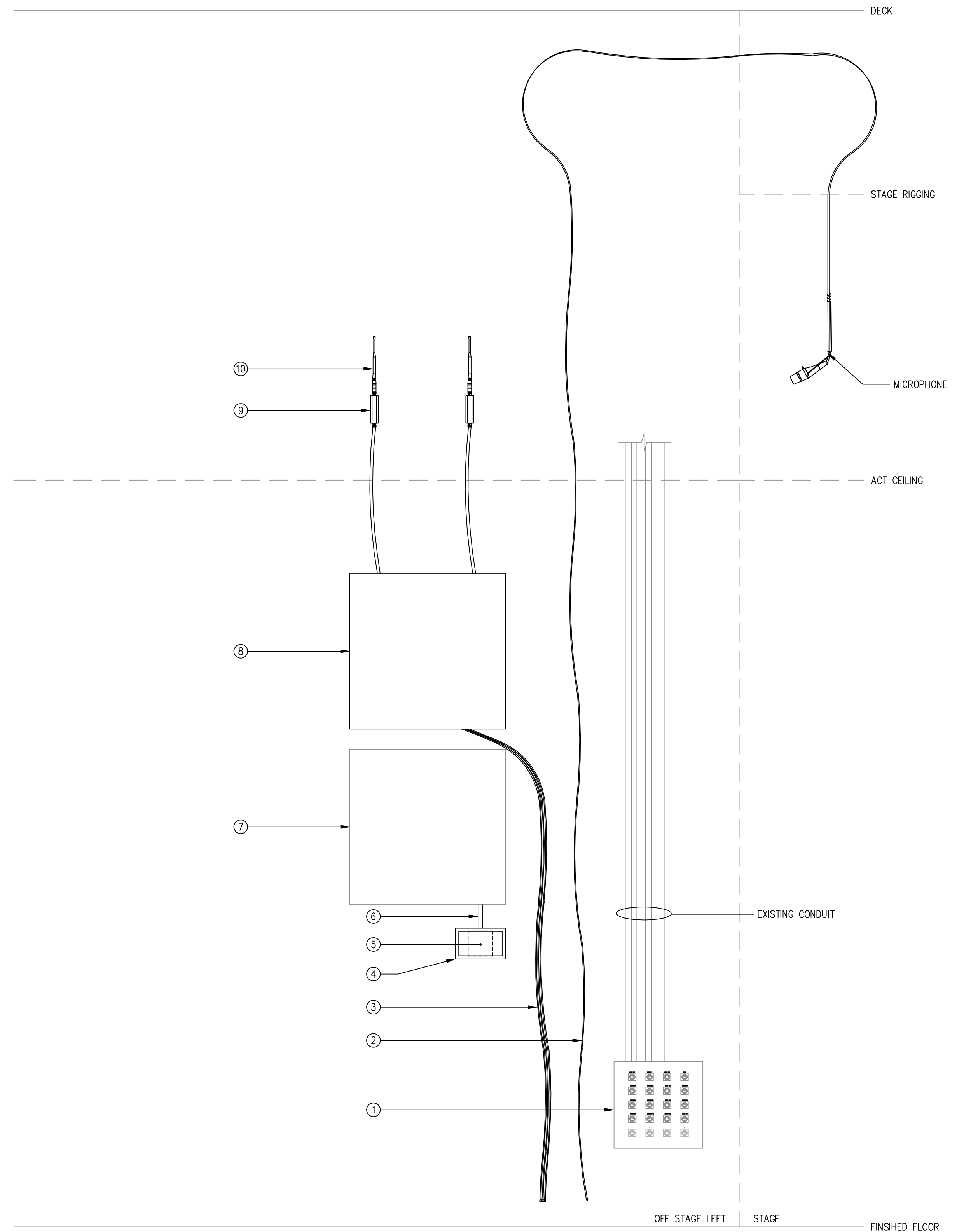
ITEM	DESCRIPTION	EXISTING	OFE	N/A
2	STAGE RIGGING	EXISTING	AVC	1
1	MICROPHONE	PER SPEC SECTION 27 4116	AVC	1
		MFG/MODEL	BY	QTY.

CEILING MICROPHONE MOUNTING
SCALE: NTS



ITEM	DESCRIPTION	EXISTING	OFE	BY	QTY.
4	DATA	EXISTING	OFE		1
3	POWER	EXISTING	OFE		1
2	PROJECTOR MOUNT ASSEMBLY	EXISTING	OFE		1
1	PROJECTOR	PER SPEC SECTION 27 4116	AVC		1
		MFG/MODEL	BY		

FINISHED CEILING PROJECTOR MOUNTING
SCALE: NTS



ITEM	DESCRIPTION	EXISTING	OFE	BY	QTY.
10	MICROPHONE ANTENNA	PER SPEC SECTION 27 4116	AVC		2
9	MOUNTING BRACKET	PER SPEC SECTION 27 4116	AVC		2
8	WALL RACK RJ1	PER SPEC SECTION 27 4116	AVC		1
7	WALL RACK RJ3	EXISTING	OFE		1
6	3/4" CONDUIT	AS SPECIFIED	AVC	AS REQ.	
5	CONTROL PANEL	PER SPEC SECTION 27 4116	AVC		1
4	CONTROL PANEL WALL BOX	AS SPECIFIED	AVC		1
3	XLR 12 CHANNEL SNAKE CABLE	AS SPECIFIED	AVC		1
2	CEILING MICROPHONE XLR CABLE	PER SPEC SECTION 27 4116	AVC		6
1	XLR PATCH PANEL WALL BOX	EXISTING	OFE		1
		MFG/MODEL	BY		

NOTES:
 1. MOUNT RACK TO COMPLY WITH ADA PROTRUSION CRITERIA. PROVIDE CABLE SNAKE SUFFICIENT LENGTH TO REACH XLR PATCH PANEL.
 2. FIELD TEST AND LOCATE WALL MOUNTED REMOTE ANTENNAS.

STAGE RACK AND SOURCE INPUTS
SCALE: NTS

NO.	REVISION	DATE

AUDIOVISUAL DESIGN
100% CONSTRUCTION
DOCUMENTS

COORDINATION
DETAILS

DESIGNED	PROJECT #
KJE	19064
DRAWN	SCALE
DLL	AS NOTED
CHECKED	DATE
SJT	4-29-2020

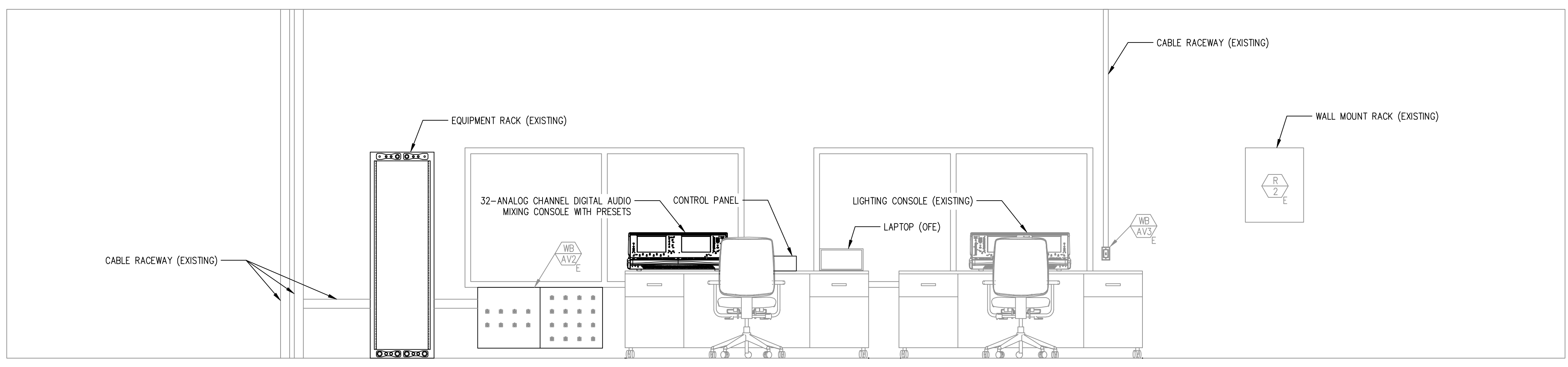
TA-701

User Name : Derek Date Time : Wed, 29 Apr 2020 - 2:56pm Name : C:\Users\Derek\AppData\Local\Temp\AcPublish\126958\19064_TA-701.dwg 1" = 10'-0" 1" = 4'-0" 1" = 8'-0" 1" = 1'-0"

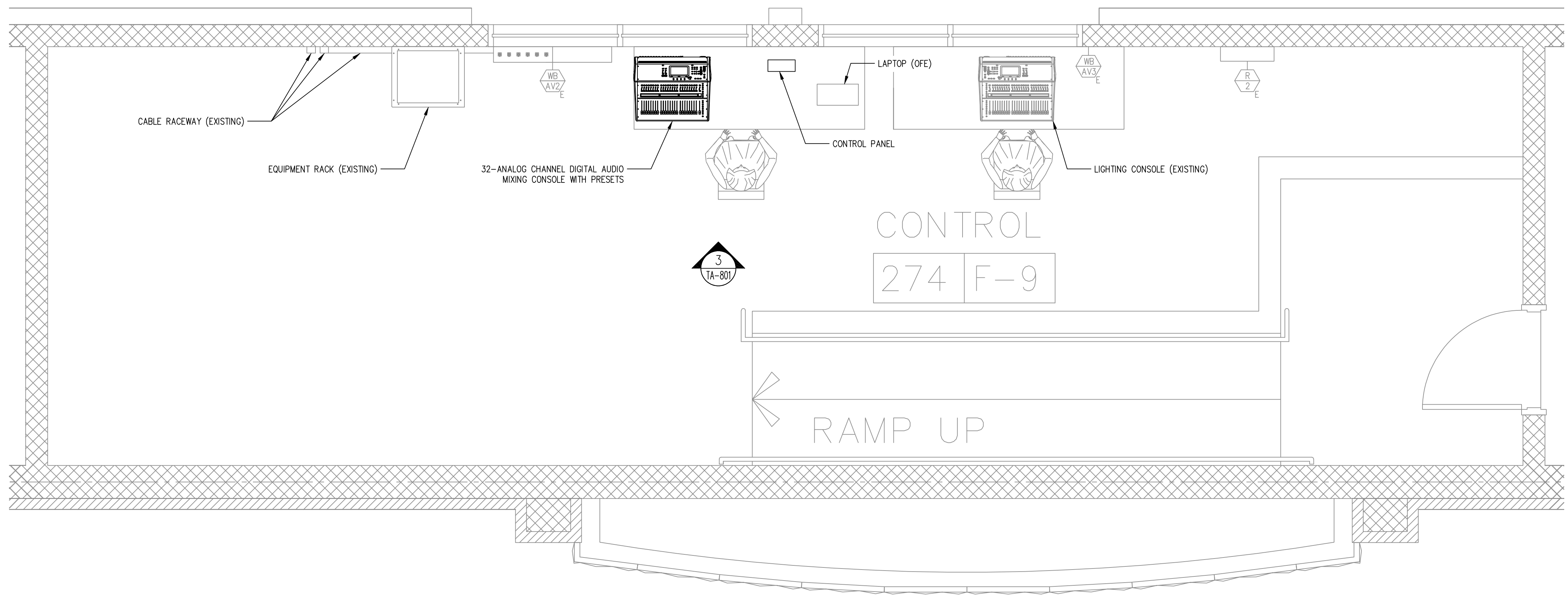


THORBURN ASSOCIATES
 ACOUSTICAL, TECHNOLOGY, AND LIGHTING DESIGN
 2500 Gateway Centre Blvd. Suite 800
 Morrisville, NC 27560 919.463.9995
 San Francisco Area Office : 510.886.7826
 Los Angeles Area Office : 818.569.9234
 Orlando Area Office : 818.535.1180
 Charlotte Area Office : 704.334.1040
 COPYRIGHT © 2020 THORBURN ASSOCIATES INC.

**SOUTH POINTE HS AUDITORIUM
 AUDIOVISUAL SYSTEM**



CONTROL (274) FRONT ELEVATION
 SCALE: 1/2" = 1'-0"



CONTROL (274) ENLARGED PLAN
 SCALE: 1/2" = 1'-0"

3

1

NO.	REVISION	DATE

AUDIOVISUAL DESIGN
 100% CONSTRUCTION DOCUMENTS

CONTROL ROOM
 ENLARGED PLANS

DESIGNED KJE	PROJECT # 19064	TA-801
DRAWN DLL	SCALE AS NOTED	
CHECKED SJT	DATE 4-29-2020	

1" = 10'-0"
 1" = 4'-0"
 1" = 8'-0"
 1" = 1'-0"
 User Name : Derek.Datta\Time : Wed, 29 Apr 2020 : 2:56PM\Name : C:\Users\Derek\AppData\Local\Temp\AcPublish_12696\19064 TA-801.dwg