

## USDA Forest Service Grant PROPOSED TREE PLANTINGS


PHASE	STREET NAME	TYPE OF TREE	NUMBER OF TREES	NOTES
PHASE 2	<u>19th Street NE</u>	Frontier Elm	09	Cherry Avenue NE to St. Elmo Avenue NE
		Ginkgo Biloba	11	
			<u>20</u>	
			Total	20
	<u>Dueber Avenue SW</u>	Washington Hawthorn	18	2nd Street SW to 17th Street SW
		Littleleaf Linden	14	
		Sunset red maple	03	
		Trident Maple	13	
		Flame Maple	02	
			<u>50</u>	
		Total	50	
<u>Dueber Avenue SW (Timken Steel)</u>	Flowering Jack Pear	09	15th Street SW to 17th Street SW	
		<u>09</u>		
		Total	09	
<u>Mckinley Avenue SW</u>	Ivory Silk Lilac	05	W Tuscarawas Street to Navarre Road SW	
	Yoshino Cherry	11		
	Kwanzan Cherry	08		
	Shumard Oak	03		
	Sourwood	03		
		<u>30</u>		
		Total	30	
<u>9th Street SW</u>	Frontier Elm	05	Wertz Ave SW to Harrison Ave SW	
	Hall's Hardy Almond	08		
	Kwanzan Cherry	04		
	Yoshino Cherry	03		
	Lacebark Elm	04		
	Sourwood	05		
		<u>29</u>		
		Total	29	
<u>West Park</u>	American Sycamore	13	Along Creek	
		<u>13</u>		
		Total	13	
<u>Monument Road - Phase II</u>	Kwanzan Flowering Cherry	32	Phase I to Spring house	
		<u>32</u>		
		Total	32	
<u>38th Street</u>	Ivory Silk Lilac	20	Burshire Dr NW to White house Ave NW	
		<u>20</u>		
		Total	20	

## PROPOSED STREET TREE PLANTINGS

PHASE	STREET NAME	TYPE OF TREE	NUMBER OF TREES	NOTES
PHASE 2	Broad Avenue	Sun Valley Red Maple	22	13th Street NW to W. Tuscarawas St.
		Flame Maple	9	
		Ginkgo Biloba Princeton Sentry	12	
		Summer Sprite Linden	12	
		<b>Total</b>	<b>55</b>	
	Market Avenue N / Rt. 62 Ramp	Norway Spruce	07	Off ramp grass area (Phase II)
		<b>Total</b>	<b>07</b>	
	30th Street	Jack Flowering Pear	26	Frazer Ave NW to Market Ave N
		Pink Flair Cherry	43	
		<b>Total</b>	<b>69</b>	
<b>TOTAL PHASE 2</b>			<b>334</b>	

# CITY WIDE TREE PLANTINGS (PHASE II) 9TH STREET SW



CITY WIDE TREE PLANTINGS (PHASE II)	
SCALE: 1" = 50'	DATE: MARCH 2018
	
THE CITY OF CANTON THOMAS M. BERNABEI, MAYOR DANIEL J. MARQUEL, P.E., CITY ENGINEER 248 BIRTH ST. SW #100   336-363-7300   www.cantonmna.org/plantings	

## FROM WERTZ AVE SW TO CLARENDON AVE SW



- Tree Type**
- Ulmus 'Frontier', (Frontier Elm)
  - Prunus x yedoensis, (Yoshino Cherry)
  - Prunus serotina 'Kwanzan', (Kwanzan Flowering Cherry)
  - Ulmus parvifolia, (Lacebark Elm)
  - Oxydendrum arborescens, (Sourwood)
  - Prunus dulcis, (Half's Hardy Almond)
- House Number
- Address

## FROM CLARENDON AVE SW TO SMITH AVE SW



# CITY WIDE TREE PLANTINGS (PHASE II) 9TH STREET SW

FROM SMITH AVE TO DRYDEN AVE SW (END OF SCOPE)

### Tree Type

- Ulmus 'Frontier', (Frontier Elm)
- Prunus x yedoensis, (Yoshino Cherry)
- Prunus serrulata 'Kwanzan', (Kwanzan Flowering Cherry)
- Ulmus pterocarpus, (Lacebark Elm)
- Oxydendrum arboreum, (Sourwood)
- Prunus dulcis - (Half's Hardy Almond)
- Address
- House Number



CITY WIDE TREE PLANTINGS (PHASE II)  
SCALE: 1" = 500'

DATE: MARCH 2018  
MAP BY: HCD

THE CITY OF CANTON  
THOMAS M. BERNABEI, MAYOR  
OFFICE OF THE CITY ENGINEER  
CANTON, MISSOURI  
248 3994 P. #1000 • FAX 482-7261 • www.cantonsmo.gov/planning



CITY WIDE TREE PLANTINGS (PHASE B)

SCALE: 1" = 40'

DATE: MARCH 2015


MAP BY: KCD

THE CITY OF CANTON

THOMAS M. BERNABEI, MAYOR

DAVID J. MACCIGN, P.E., CITY ENGINEER

200 BERRY ST. NE, 4TH FL. 304-983-2341 www.cantonma.gov/planning



# CITY WIDE TREE PLANTINGS (PHASE II)

## 19TH STREET NE

(Page 1 of 2)

**Legend**

- Tree Type
- Ulmus 'Frontier', (Frontier Elm)
- Ginkgo biloba, (Maidenhair Tree)
- Address
- House Number




FROM CHERRY AVE NE TO MIAMI CT NE



FROM MIAMI CT NE TO ROWLAND AVE NE



# CITY WIDE TREE PLANTINGS (PHASE II) 19TH STREET NE (Page 2 of 2)

CITY WIDE TREE PLANTINGS (PHASE II)	
SCALE: 1" = 60'	DATE: MARCH 2018
MAP BY: KEO	
	
THE CITY OF CANTON THOMAS M. BERNABEI, MAYOR OFFICE OF THE CITY ENGINEER 2008 19TH ST NE, SUITE 100 CANTON, NH 03041-2008	



Legend	
Tree Type	
Ulmus 'Frontier', (Frontier Elm)	
Ginkgo biloba, (Maidenhair Tree)	
Address	
House Number	



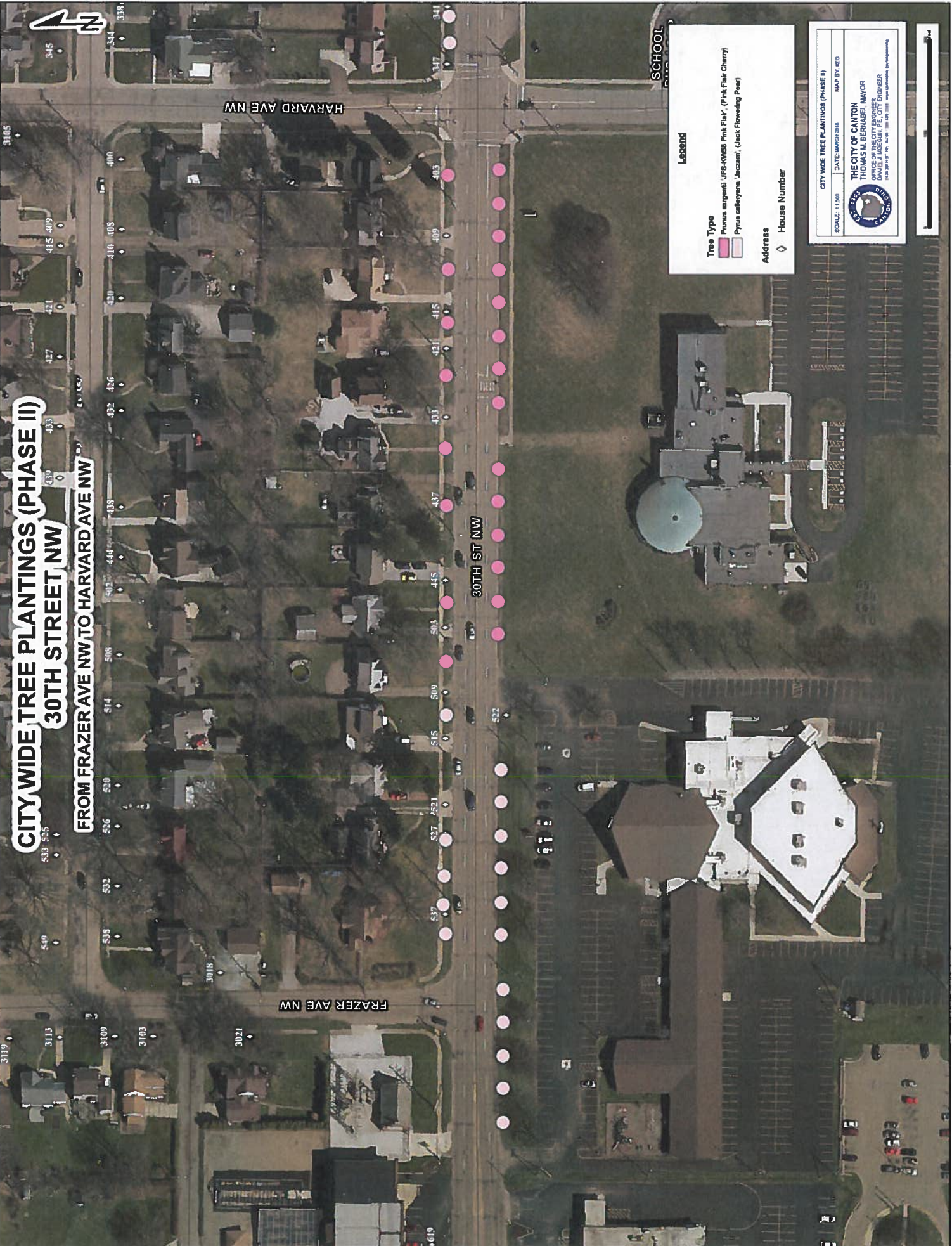
FROM ROWLAND AVE NE TO ST ELMO AVE NE



# CITY WIDE TREE PLANTINGS (PHASE II)

## 30TH STREET NW

FROM FRAZER AVE NW TO HARVARD AVE NW



**Legend**

**Tree Type**

- Prunus argentea 'IFS-KW68 Pink Flak' (Pink Flak Cherry)
- Prunus caryocarpa 'Jaccard' (Jack Flowering Pear)

**Address**

House Number

SCALE: 1:500    DATE: 04/03/2018    MAP BY: GDS

**CITY WIDE TREE PLANTINGS (PHASE II)**

THE CITY OF CANTON  
 THOMAS M. BERRIAEVE, MAYOR  
 OFFICE OF THE CITY ENGINEER  
 DANIEL J. MCGOON, PE, CITY ENGINEER  
 100 South 7th Street, Canton, MA 01921 | www.cantonma.gov



# CITY WIDE TREE PLANTINGS (PHASE II)

## 30TH STREET NW

FROM HARVARD AVE NW TO EAST



**Legend**

**Tree Type**

- Prunus sargentii 'JFS-K1658 Pink Flair' (Pink Flair Cherry)
- Pyrus calleryana 'Jazzart' (Jazz Flowering Pear)

**Address**

**House Number**

CITY WIDE TREE PLANTINGS (PHASE II)

SCALE: 1"=50' DATE: MARCH 2018 MAP BY: JEG

THE CITY OF CANTON  
 THOMAS M. BERNABEI, MAYOR  
 OFFICE OF THE CITY ENGINEER  
 DANIEL J. MORGAN, P.E., CITY ENGINEER  
 February 17, 2018 10:40:21 AM -0500  
 www.cantonma.gov/planning





# CITY WIDE TREE PLANTINGS (PHASE II)

## 38TH STREET NW

FROM BURSHIRE DR NW TO WHITEHOUSE AVE NW



**Legend**

**Tree Type**  
Syringa reikiakata 'Ivory Silk', Ivory Silk Lilac

**Address**  
House Number

CITY WIDE TREE PLANTINGS (PHASE II)

SCALE: 1:500    DATE: MARCH 2018    MAP BY: GCS

THE CITY OF CANTON  
THOMAS M. BERNHART, MAYOR  
OFFICE OF THE CITY ENGINEER  
DANIEL J. JACOBSON, PE, CITY ENGINEER  
FOR THE CITY OF CANTON

2,106    2,340

# CITY WIDE TREE PLANTINGS (PHASE II) BROAD AVE NW

FROM 12TH ST NW TO NICHOLAS PL NW



**Legend**

**Tree Type**

- Acer rubrum 'Sun Valley', (Sun Valley Red Maple)
- Tilia cordata 'Halka', (Summer Sprite Linden)
- Ginkgo biloba, (Maidenhair Tree)
- Acer ginnata', (Amur "Flame" Maple)

**Address**

- ◇ House Number

CITY WIDE TREE PLANTINGS (PHASE II)

SCALE: 1:1,200    DATE: MARCH 2018    MAP BY: KEG

**THE CITY OF CANTON**  
THOMAS M. BERNABE, MAYOR

OFFICE OF THE CITY ENGINEER  
DANIEL J. MOGUR, P.E., CITY ENGINEER  
1128 20TH ST NW, CANTON, MS 39004-1011    www.cantonms.gov/planning



# CITY WIDE TREE PLANTINGS (PHASE II)

## BROAD AVE NW

FROM NICHOLAS PL NW TO 9TH ST NW



**Legend**

**Tree Type**

- Acer rubrum 'Sun Valley', (Sun Valley Red Maple)
- Tilia cordata 'Halka', (Summer Sprite Linden)
- Ginkgo biloba, (Maidenhair Tree)
- Acer ginnata', (Amur "Flame" Maple)

**Address**

- ◆ House Number

CITY WIDE TREE PLANTINGS (PHASE II)

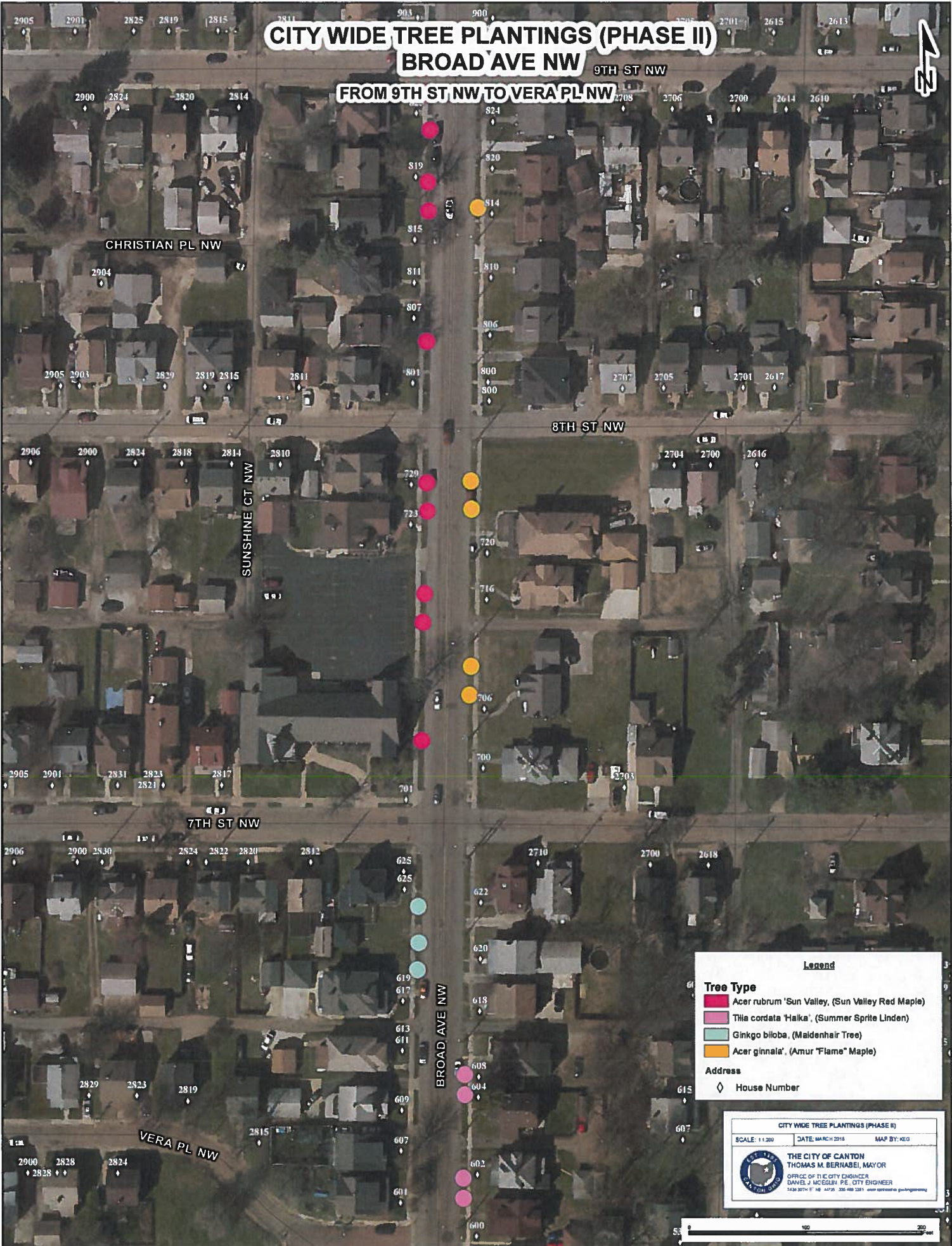
SCALE: 1:1,200    DATE: MARCH 2018    MAP BY: REG

THE CITY OF CANTON  
 THOMAS M. BERNABEI, MAYOR  
 OFFICE OF THE CITY ENGINEER  
 DANIEL J. MOEGLIJ, P.E. CITY ENGINEER  
2426 37TH ST NW, APT 201, CANTON, MN 55005

# CITY WIDE TREE PLANTINGS (PHASE II)

## BROAD AVE NW

FROM 9TH ST NW TO VERA PL NW



**Legend**

**Tree Type**

- Acer rubrum 'Sun Valley', (Sun Valley Red Maple)
- Thia cordata 'Halka', (Summer Sprite Linden)
- Ginkgo biloba, (Maidenhair Tree)
- Acer ginnala, (Amur "Flame" Maple)

**Address**

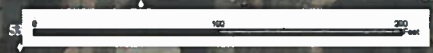
- ◇ House Number

CITY WIDE TREE PLANTINGS (PHASE II)

SCALE: 1:1,200    DATE: MARCH 2016    MAP BY: KEG

THE CITY OF CANTON  
 THOMAS M. BERNABEI, MAYOR

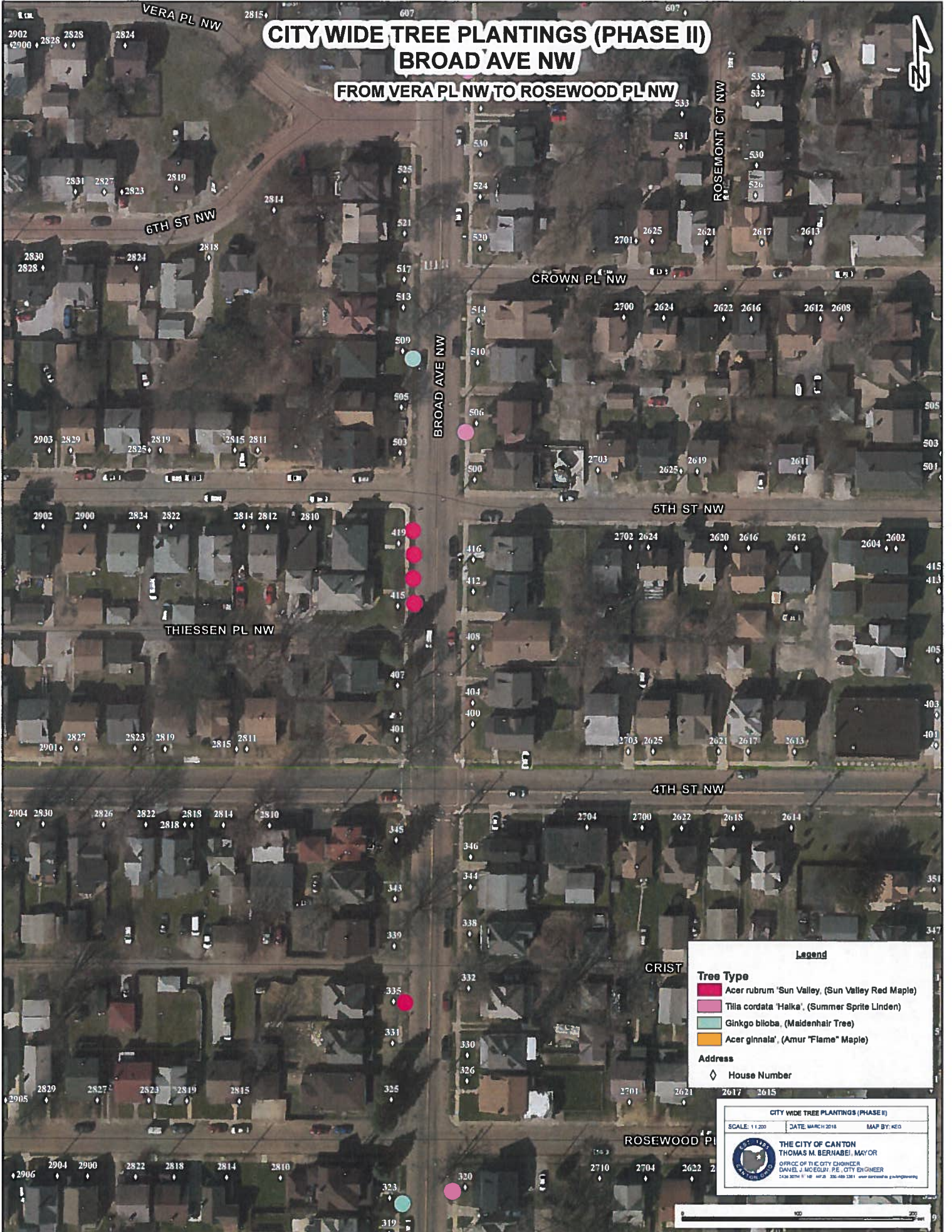
OFFICE OF THE CITY ENGINEER  
 DANIEL J. MCGLOTHLIN, P.E., CITY ENGINEER  
 1438 30TH ST. SE, SUITE 200, CANTON, MS 39002



# CITY WIDE TREE PLANTINGS (PHASE II)

## BROAD AVE NW

### FROM VERA PL NW TO ROSEWOOD PL NW



**Legend**

**Tree Type**


- Acer rubrum 'Sun Valley', (Sun Valley Red Maple)
- Tilia cordata 'Halka', (Summer Sprite Linden)
- Ginkgo biloba, (Maidenhair Tree)
- Acer ginnala', (Amur "Flame" Maple)

**Address**

- ◇ House Number

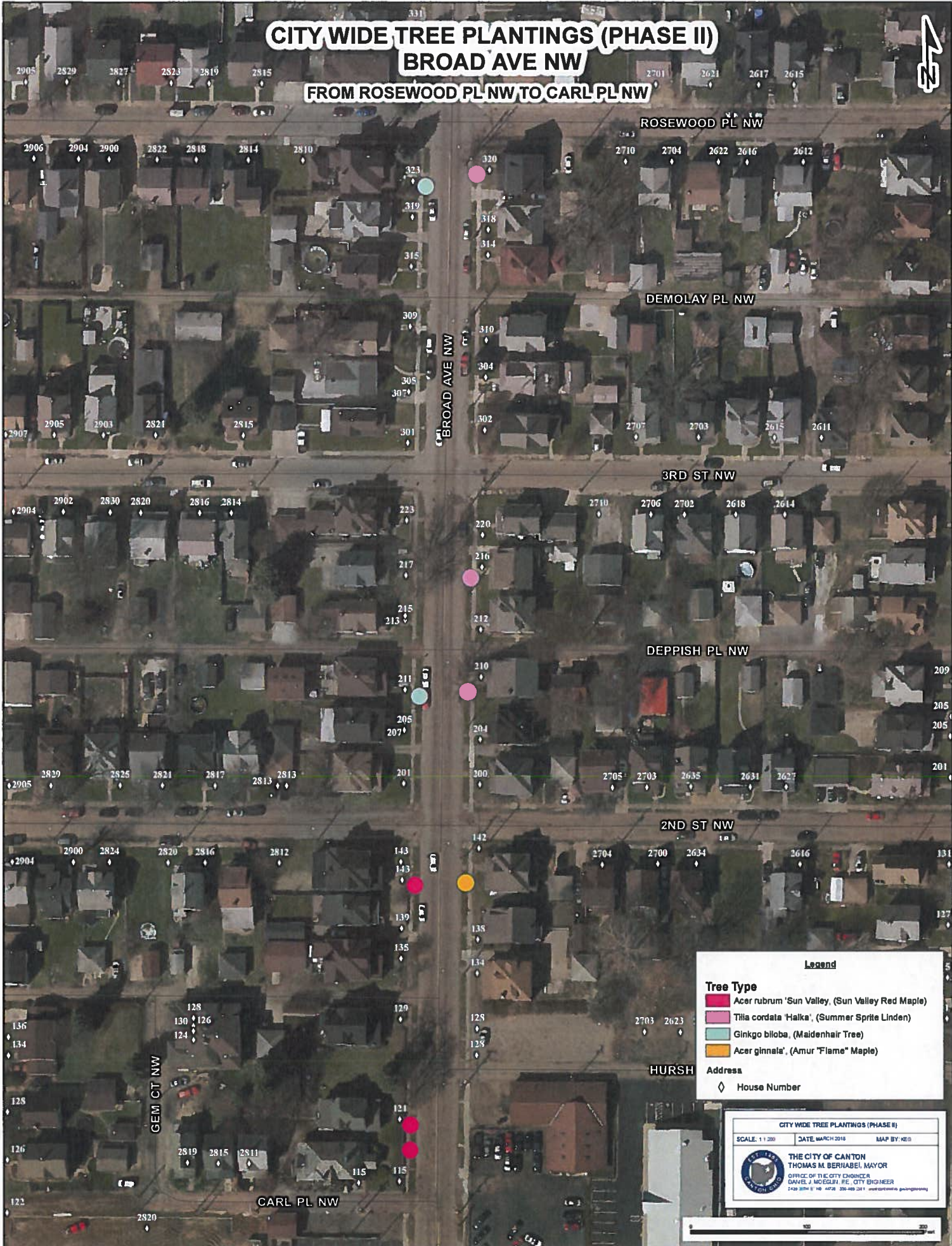
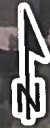
CITY WIDE TREE PLANTINGS (PHASE II)

SCALE: 1:1,200    DATE: MARCH 2018    MAP BY: KEO

 THE CITY OF CANTON  
 THOMAS M. BERNABEI, MAYOR  
 OFFICE OF THE CITY ENGINEER  
 DANIEL J. MCCLELLY, P.E., CITY ENGINEER  
©2018 CITY OF CANTON. ALL RIGHTS RESERVED.



# CITY WIDE TREE PLANTINGS (PHASE II) BROAD AVE NW FROM ROSEWOOD PL NW TO CARL PL NW



**Legend**

**Tree Type**

- Acer rubrum 'Sun Valley' (Sun Valley Red Maple)
- Tilia cordata 'Halka' (Summer Sprite Linden)
- Ginkgo biloba (Maidenhair Tree)
- Acer ginnala (Amur "Flame" Maple)

**Address**

- ◇ House Number

**CITY WIDE TREE PLANTINGS (PHASE II)**

SCALE: 1:1,200      DATE: MARCH 2018      MAP BY: KES

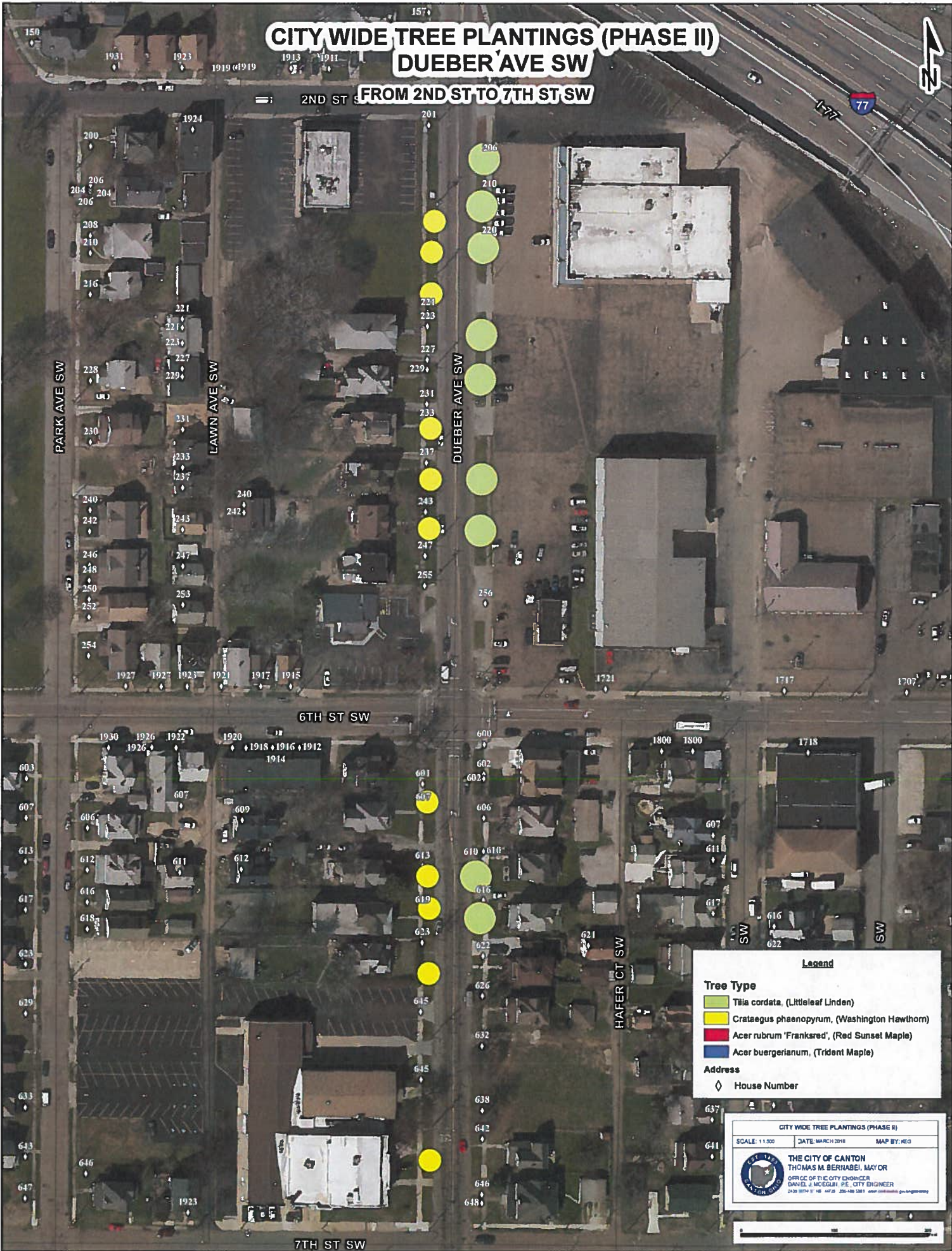
**THE CITY OF CANTON**  
 THOMAS M. BERNABEI, MAYOR  
 OFFICE OF THE CITY ENGINEER  
 DANIEL J. MCGLOTHLIN, P.E., CITY ENGINEER  
1428 3RD ST NW, SUITE 100, CANTON, MS 39002-3211



# CITY WIDE TREE PLANTINGS (PHASE II)

## DUEBER AVE SW

FROM 2ND ST TO 7TH ST SW



**Legend**

**Tree Type**

- Tilia cordata*, (Littleleaf Linden)
- Crataegus phaenopyrum*, (Washington Hawthorn)
- Acer rubrum* 'Franksred', (Red Sunset Maple)
- Acer buergerianum*, (Trident Maple)

**Address**

- House Number

CITY WIDE TREE PLANTINGS (PHASE II)

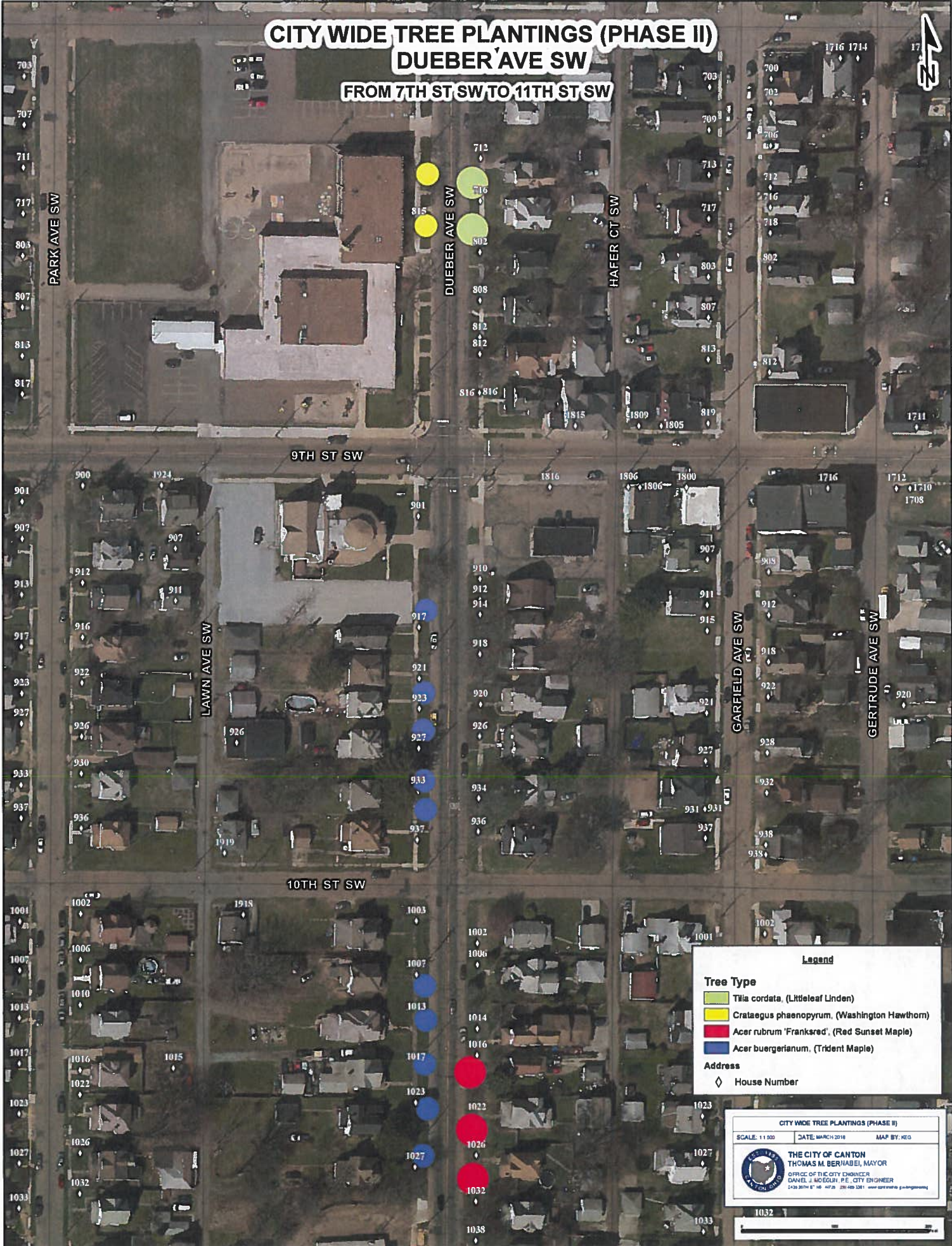
SCALE: 1:1,000      DATE: MARCH 2018      MAP BY: REG

**THE CITY OF CANTON**  
 THOMAS M. BERRABE, MAYOR  
 OFFICE OF THE CITY ENGINEER  
 DANIEL J. MOSELMAN, P.E., CITY ENGINEER  
2430 SOUTH W. 47TH AVE. APT. 201, CANTON, OHIO 44705

# CITY WIDE TREE PLANTINGS (PHASE II)

## DUEBER AVE SW

### FROM 7TH ST SW TO 11TH ST SW



**Legend**

**Tree Type**

- Tilia cordata*, (Littleleaf Linden)
- Crataegus phaenopyrum*, (Washington Hawthorn)
- Acer rubrum* 'Frankred', (Red Sunset Maple)
- Acer buergerianum*, (Trident Maple)

**Address**

- House Number

**CITY WIDE TREE PLANTINGS (PHASE II)**

SCALE: 1:1,000      DATE: MARCH 2018      MAP BY: KEG

**THE CITY OF CANTON**  
 THOMAS M. BERHANEI, MAYOR  
 OFFICE OF THE CITY ENGINEER  
 DANIEL J. SOGOLIN, P.E., CITY ENGINEER  
1430 36TH ST SW, 44726 | 216-469-3361 | www.cityofcanton.gov/engneering





# CITY WIDE TREE PLANTINGS (PHASE II) DUEBER AVE SW

FROM 11TH ST SW TO FREEMONT PL SW



**Legend**

**Tree Type**

- Crataegus phenopyrum*, (Washington Hawthorn)
- Acer buergerianum*, (Trident Maple)
- Acer ginnala*, (Amur "Flame" Maple)

**Address**

- House Number

CITY WIDE TREE PLANTINGS (PHASE II)

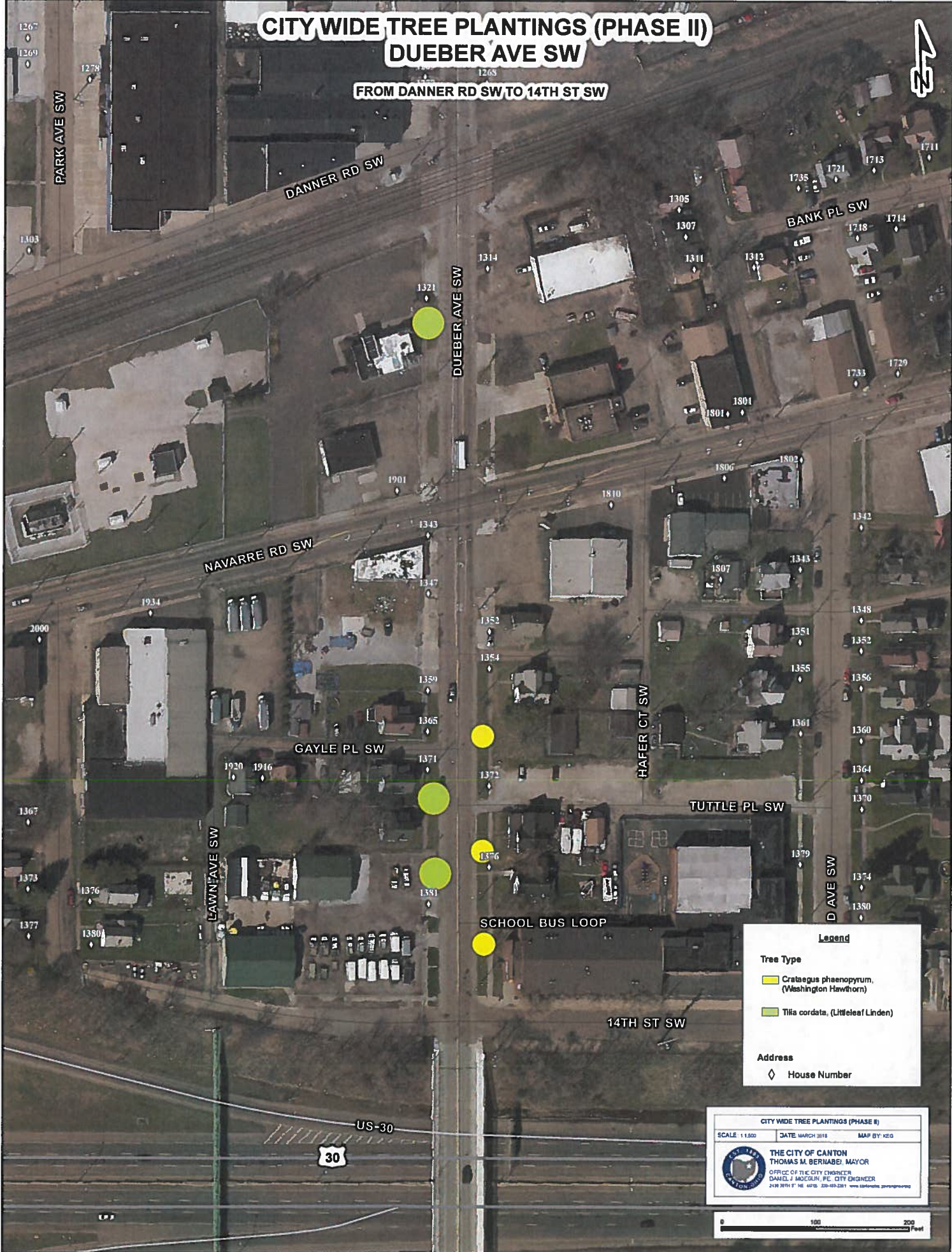
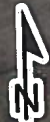
SCALE: 1:1500    DATE: MARCH 2018    MAP BY: KEO

**THE CITY OF CANTON**  
 THOMAS M. BERRIABE, MAYOR  
 OFFICE OF THE CITY ENGINEER  
 DANIEL J. WOODSUN, P.E., CITY ENGINEER  
2438 30TH ST., NE, 41318-1204 • WWW.CANTONMN.GOV



# CITY WIDE TREE PLANTINGS (PHASE II) DUEBER AVE SW

FROM DANNER RD SW TO 14TH ST SW



**Legend**

**Tree Type**

- Crataegus phaenopyrum*, (Washington Hawthorn)
- Tilia cordata*, (Littleleaf Linden)

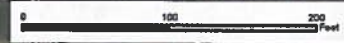
**Address**

- House Number

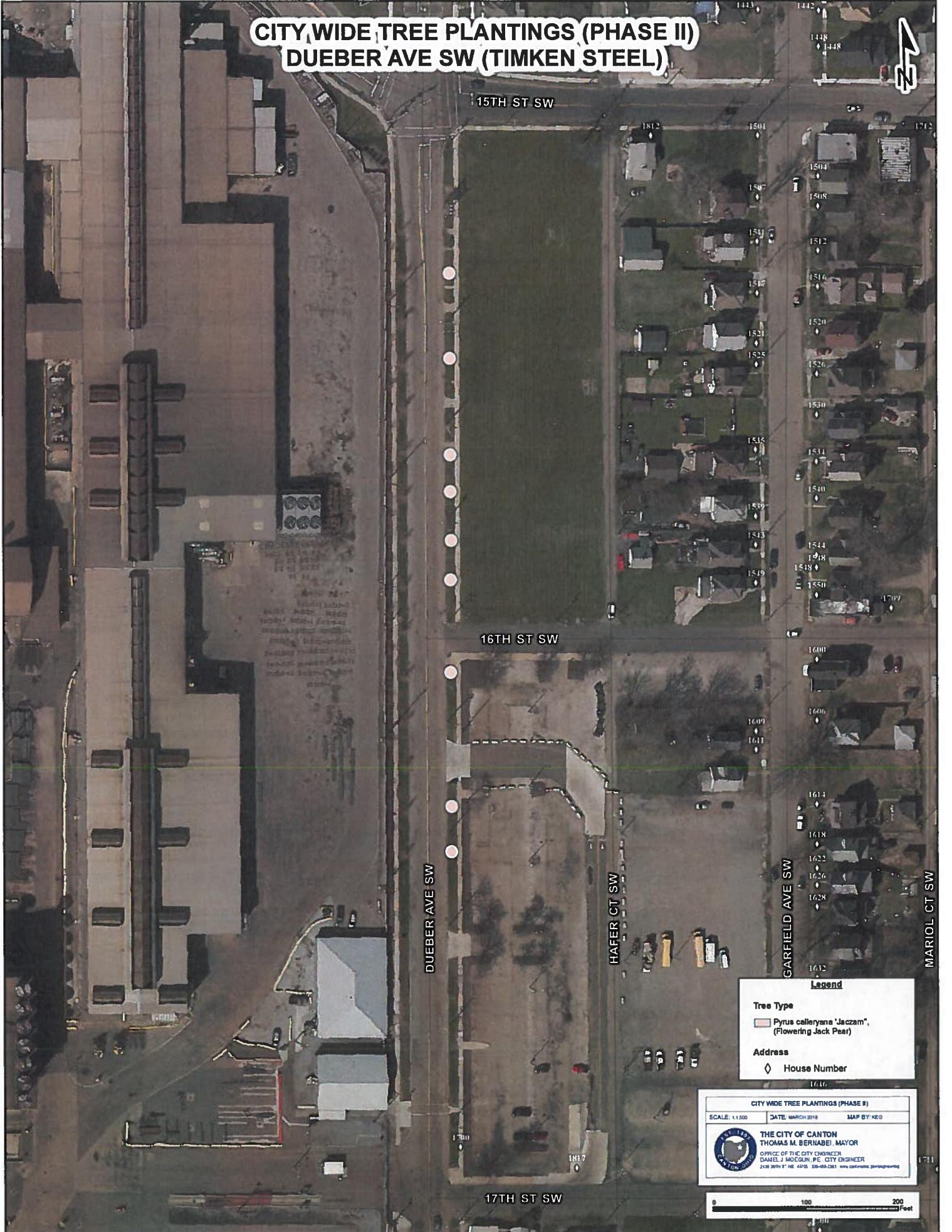
CITY WIDE TREE PLANTINGS (PHASE II)

SCALE 1:1,500    DATE MARCH 2018    MAP BY: KEO

**THE CITY OF CANTON**  
 THOMAS M. BERNABE, MAYOR  
 OFFICE OF THE CITY ENGINEER  
 DANIEL J. MCGUIN, P.E. CITY ENGINEER  
 218 SOUTH F. W. AVE. CANTON, OH 44702



# CITY WIDE TREE PLANTINGS (PHASE II) DUEBER AVE SW (TIMKEN STEEL)



15TH ST SW

16TH ST SW

17TH ST SW

DUEBER AVE SW

HAFER CT SW

GARFIELD AVE SW

MARIOL CT SW

**Legend**

**Tree Type**  
 Pyrus calleryana 'Jazzam',  
 (Flowering Jack Pear)

**Address**  
 House Number

CITY WIDE TREE PLANTINGS (PHASE II)

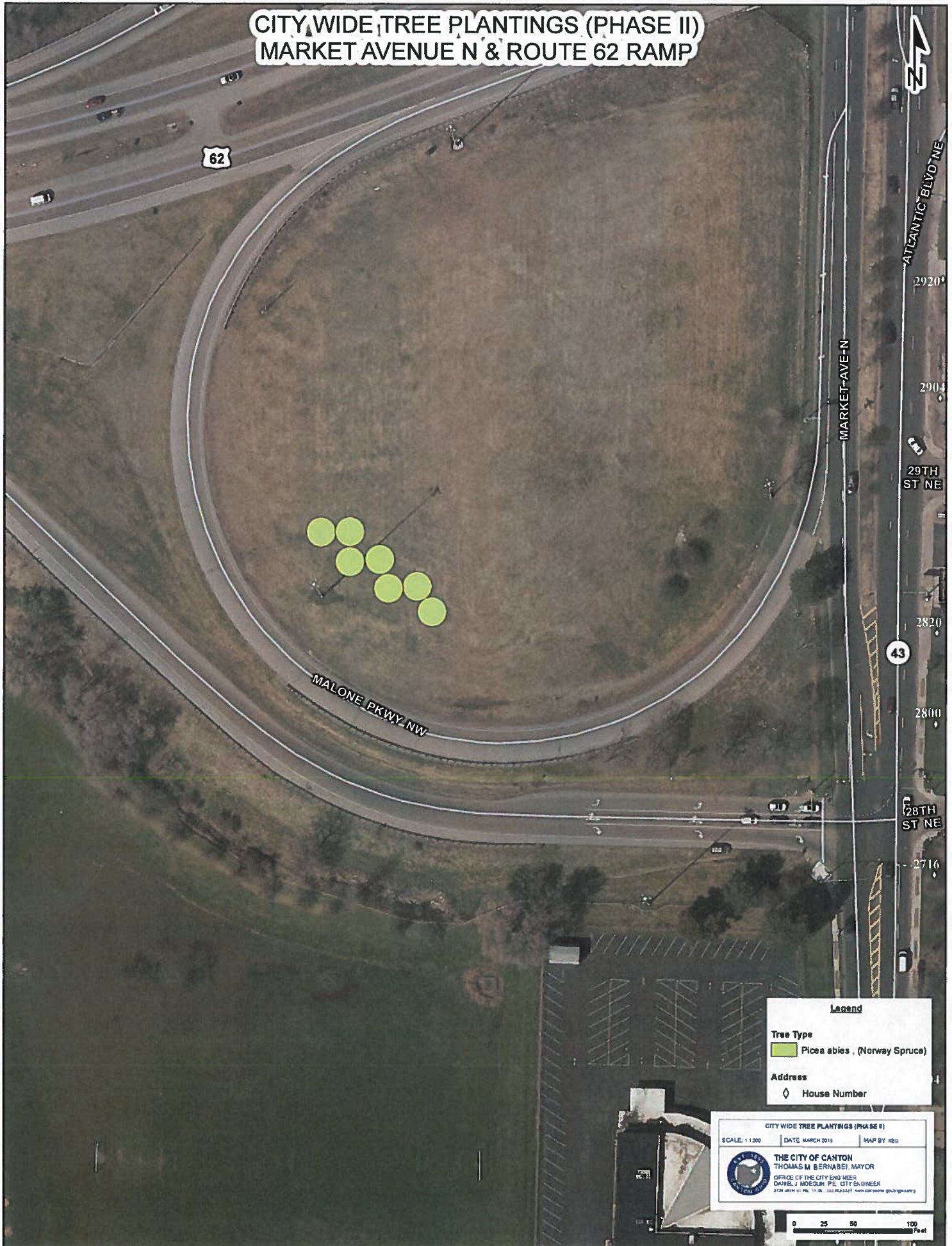
SCALE: 1:1,200    DATE: MARCH 2018    MAP BY: KES

THE CITY OF CANTON  
 THOMAS M. BERNABEI, MAYOR

OFFICE OF THE CITY ENGINEER  
 DANIEL J. MACGILVER, P.E., CITY ENGINEER  
 2145 20TH ST SE, OFFICE    508-483-3381    WWW.CANTONMAINE.MA.GOV



# CITY WIDE TREE PLANTINGS (PHASE II) MARKET AVENUE N & ROUTE 62 RAMP



**Legend**

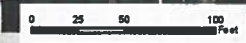
**Tree Type**  
■ Picea abies , (Norway Spruce)

**Address**  
◆ House Number

CITY WIDE TREE PLANTINGS (PHASE II)

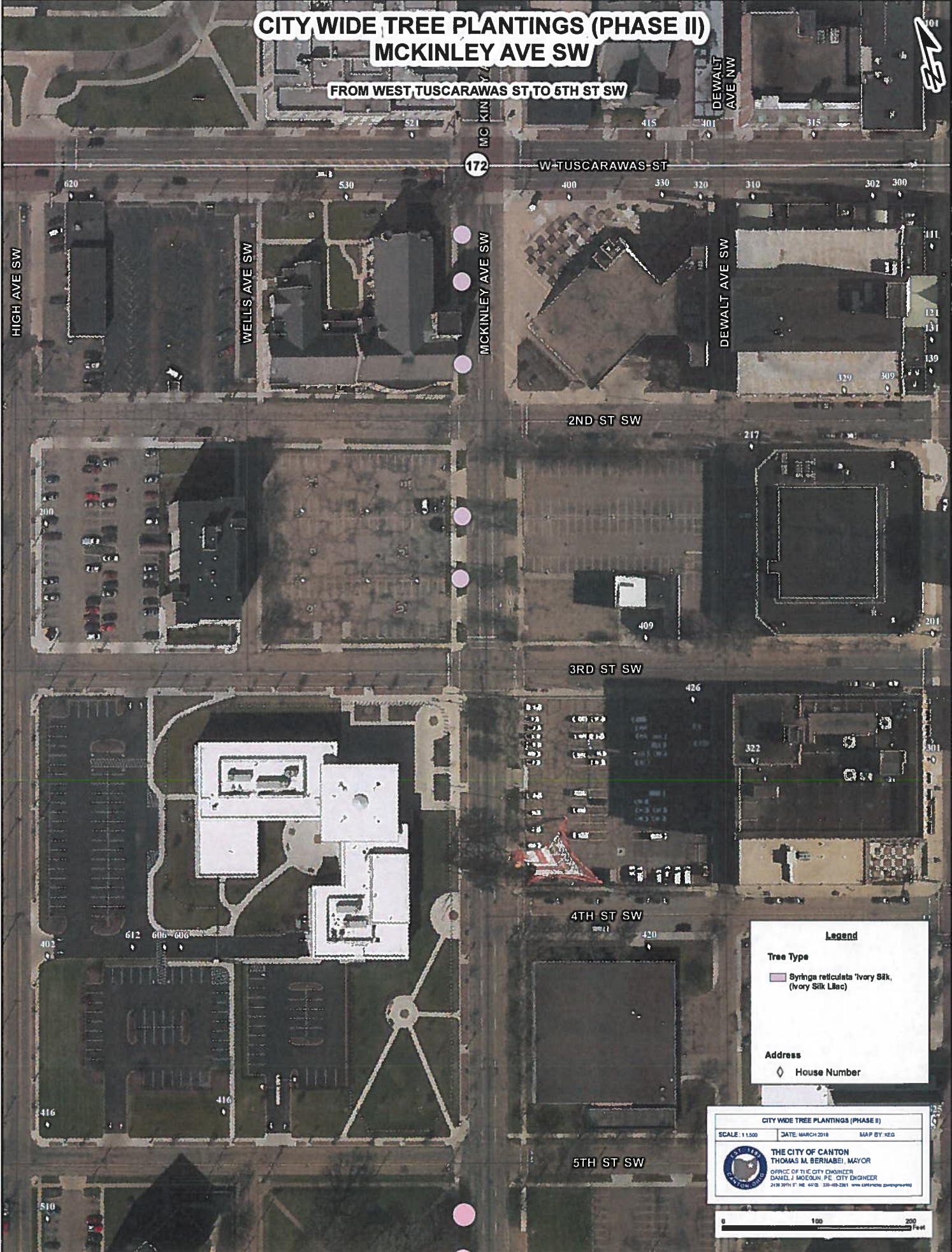
SCALE: 1:1200    DATE: MARCH 2018    MAP BY: REG

**THE CITY OF CANTON**  
THOMAS M. BERNARDI, MAYOR  
OFFICE OF THE CITY ENGINEER  
DANIEL J. MOEGLIN, P.E., CITY ENGINEER  
200 W. 11th St., P.O. Box 111, Canton, OH 44703-0111




# CITY WIDE TREE PLANTINGS (PHASE II) MCKINLEY AVE SW

FROM WEST TUSCARAWAS ST TO 6TH ST SW




**Legend**

**Tree Type**


-  Syringa reticulata 'Ivory Silk, (Ivory Silk Lilac)

**Address**

-  House Number

CITY WIDE TREE PLANTINGS (PHASE II)

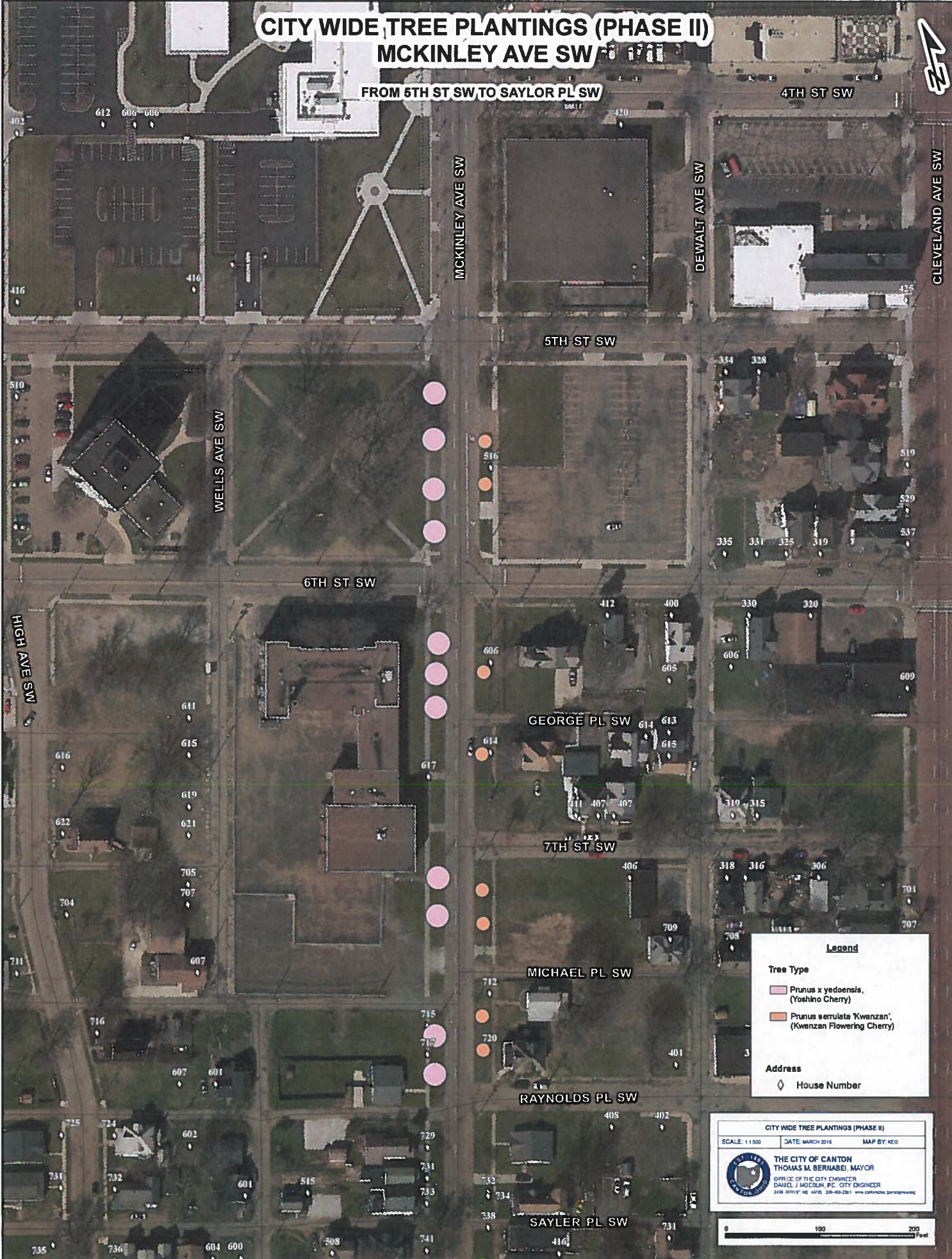
SCALE: 1:1,000    DATE: MARCH 2018    MAP BY: KEG

 THE CITY OF CANTON  
THOMAS M. BERRIABE, MAYOR  
OFFICE OF THE CITY ENGINEER  
DANIEL J. MOEGLIN, P.E., CITY ENGINEER  
218 SOUTH P. HWY. #100    336-465-2381    www.cantonmn.gov/planning



# CITY WIDE TREE PLANTINGS (PHASE II) MCKINLEY AVE SW

FROM 5TH ST SW TO SAYLOR PL SW



**Legend**

**Tree Type**

- Prunus x yedoensis, (Yoshino Cherry)
- Prunus serrulata 'Kwanzan', (Kwanzan Flowering Cherry)

**Address**

- House Number

CITY WIDE TREE PLANTINGS (PHASE II)

SCALE: 1:1500    DATE: MARCH 2018    MAP BY: KEO

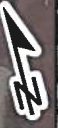
THE CITY OF CANTON  
THOMAS M. BERRIABE, MAYOR

OFFICE OF THE CITY ENGINEER  
DANIEL J. MCCOY, PE, CITY ENGINEER  
2108 BERRY RD. 4002    206-463-2211    www.cantonms.org/planning



# CITY WIDE TREE PLANTINGS (PHASE II) MCKINLEY AVE SW

FROM SAYLOR PL SW TO NIMO PL SW



**Legend**

**Tree Type**

- Oxydendrum arboreum, (Sourwood)
- Quercus shumardii, (Shumard Oak)

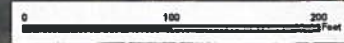
**Address**

- ◇ House Number

CITY WIDE TREE PLANTINGS (PHASE II)

SCALE: 1:1,000      DATE: MARCH 2018      MAP BY: REIG

**THE CITY OF CANTON**  
 THOMAS M. BERRIABE, MAYOR  
 OFFICE OF THE CITY ENGINEER  
 DANIEL J. MOEGLIN, PE, CITY ENGINEER  
 2100 NORTH ST. NE. SUITE 400B - CANTON, MS 39014



# CITY WIDE TREE PLANTINGS (PHASE II)

## MONUMENT ROAD NW

### PHASE 1 TO 17TH STREET NW



**Legend**

**Tree Type**  
 Prunus serrulata 'Kwanzan', (Kwanzan Flowering Cherry)

**Address**  
 House Number

**CITY WIDE TREE PLANTINGS (PHASE II)**

SCALE: 1:2,000    DATE: MARCH 2016    MAP BY: REG

**THE CITY OF CANTON**  
 THOMAS M. BERNABEI, MAYOR  
 OFFICE OF THE CITY ENGINEER  
 DANIEL J. McEGOUGH, P.E., CITY ENGINEER  
© 2016 THE CITY OF CANTON. ALL RIGHTS RESERVED. www.cantonma.gov





# CITY WIDE TREE PLANTINGS (PHASE II) WEST PARK



**Legend**

**Tree Type**  
 Platanus occidentalis,  
 (Sycamore, American)

**Address**  
 House Number

**CITY WIDE TREE PLANTINGS (PHASE II)**

SCALE: 1:2,400    DATE: MARCH 2018    MAP BY: KEO

**THE CITY OF CANTON**  
 THOMAS H. BERNABEI, MAYOR  
 OFFICE OF THE CITY ENGINEER  
 DANIEL J. MOEGLIN, PE, CITY ENGINEER  
2196 25TH ST NE APT 203-205-2245    www.cantonma.gov



