



Photo No. 1

Description: View of walking pavers and concrete deck looking west.



Photo No. 2

Description: Close-up view of defective walking pavers.



Photo No. 3

Description: View of landscape area at East Bay Park boat landing looking west.



**BENCHES TO BE
REMOVED AND
REPLACED**

Photo No. 4

Description: View of existing bench at boat landing.



Photo No. 5

Description: View of wooden top handrails looking north.



Photo No. 6

Description: Close-up view of wooden top handrail.



Photo No. 7

Description: View of boat landing deck looking west.



Photo No. 8

Description: View of existing handrails looking south.

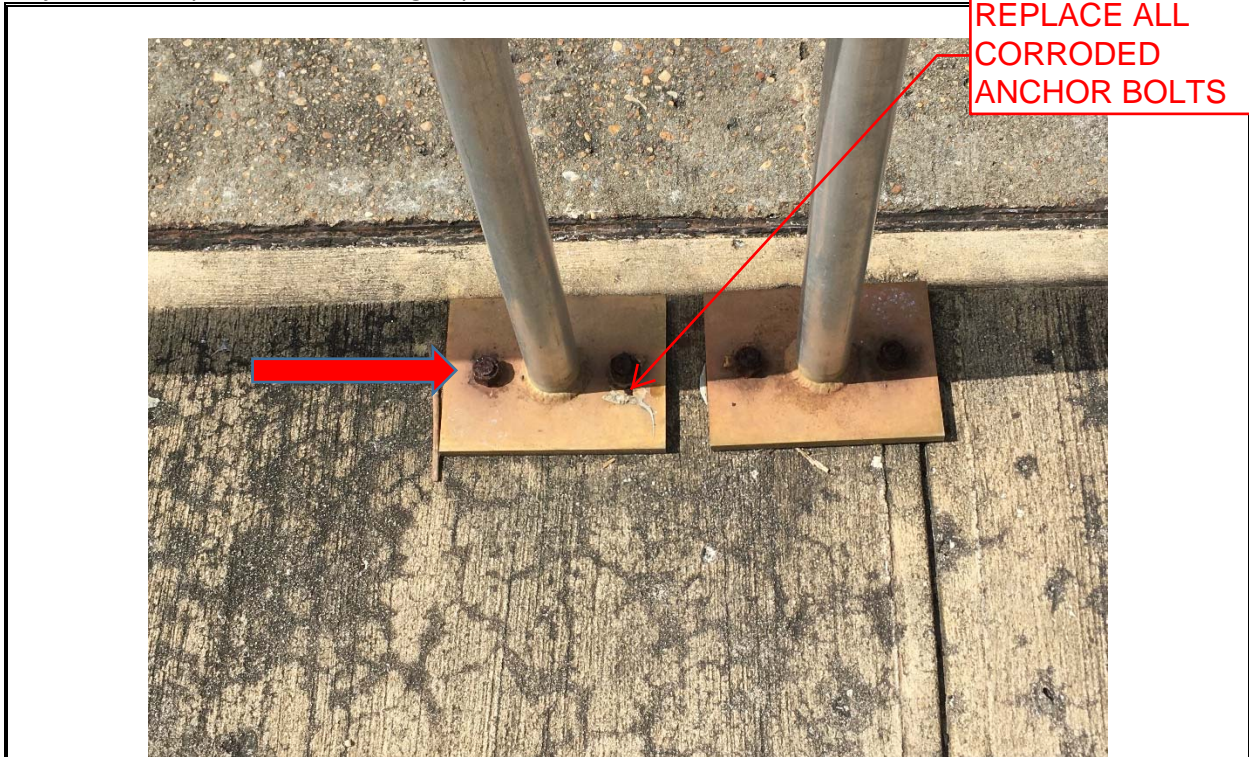


Photo No. 9

Description: View of handrail base plates. Arrow shows corrosion in anchor bolts.

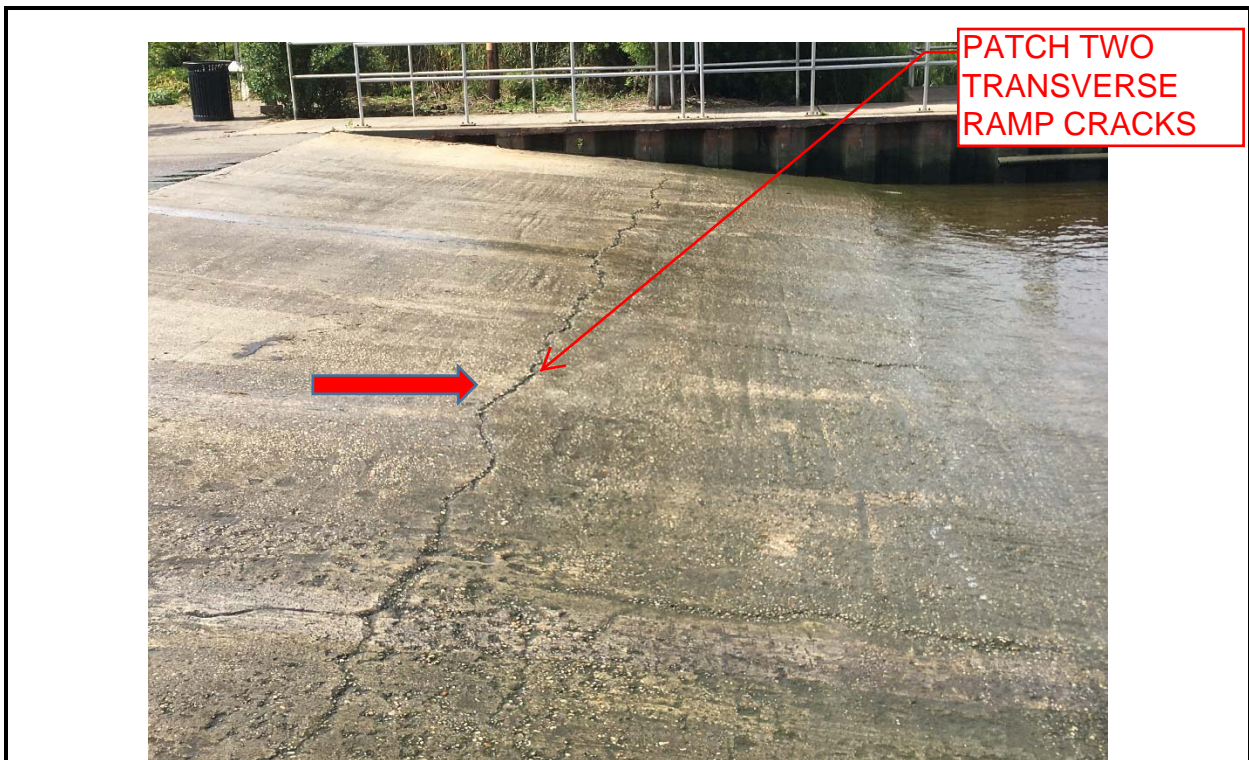


Photo No. 10

Description: View of boat ramp looking south. Arrow points to major concrete crack.