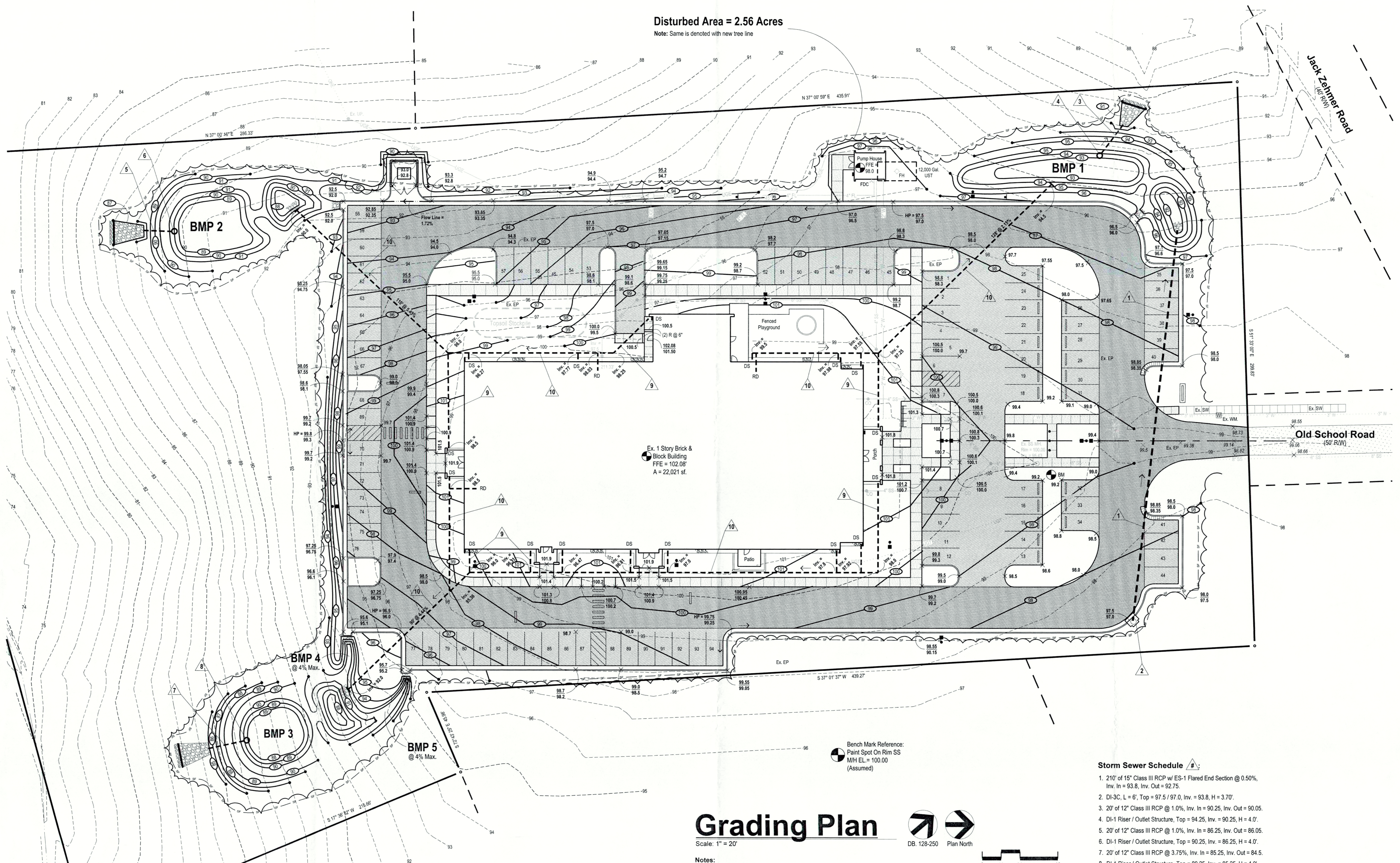


Disturbed Area = 2.56 Acres
Note: Same is denoted with new tree line



Grading Plan

Scale: 1" = 20'

- Notes:**
- Boundary and topographic info. taken from plat prepared by Ronald H. Gordon & Assoc., dated September 3, 2014.

RLD Note: The Responsible Land Disturber, RLD, for this project is Jeff B. Robinson, PE, of Jeff Robinson & Assoc., LLP until the contract for land clearing is awarded. At that time, Site Contractor shall become the RLD and the Contractor's certification shall be delivered to the E&S Control Administrator.

DCR Stormwater Permit Note: Disturbed area for this site = 2.56 acres > DEQ threshold = 1.0 acres. Therefore, DEQ permit and SWPPP are required. Same shall be executed by the Site Contractor on behalf of Dinwiddie County.

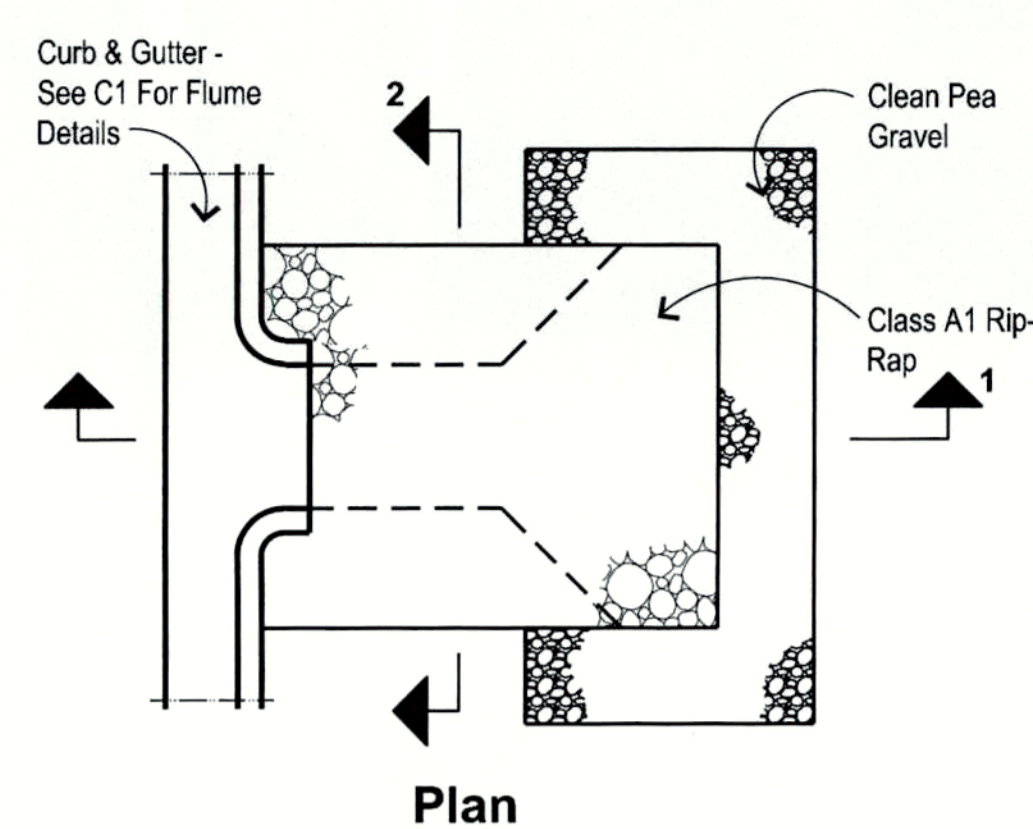
Land Disturbing Permit Note: A land disturbing permit with the County is required. A RLD (Responsible Land Disturber) shall be designated on the permit and surety shall be provided prior to approval. See RLD note at right.

- E&S Legend:**
- CE Construction Entrance
 - SF Silt Fence
 - IP Inlet Protection
 - ST Temporary Sediment Trap
 - B/M Erosion Blankets / Matting
 - OP Outlet Protection
 - LS Level Spreader

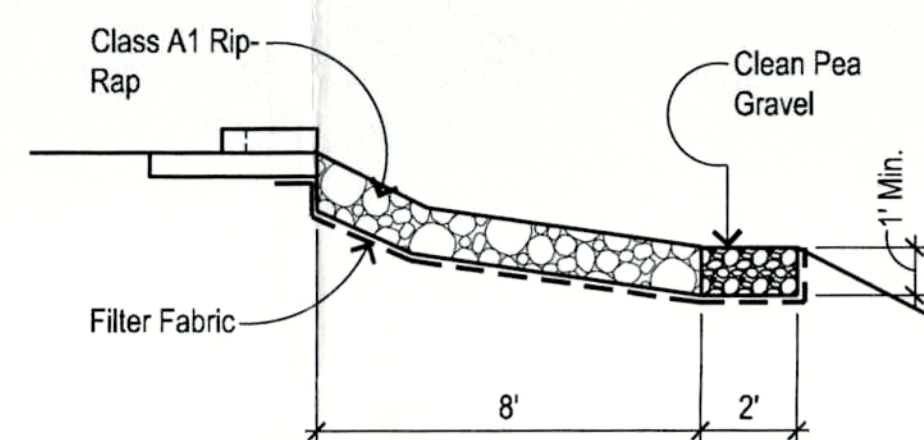
Storm Sewer Schedule

- 210' of 15" Class III RCP w/ ES-1 Flared End Section @ 0.50%, Inv. In = 93.8, Inv. Out = 92.75.
- DI-3C, L = 6', Top = 97.5 / 97.0, Inv. = 93.8, H = 3.70'.
- 20' of 12" Class III RCP @ 1.0%, Inv. In = 90.25, Inv. Out = 90.05.
- DI-1 Riser / Outlet Structure, Top = 94.25, Inv. = 90.25, H = 4.0'.
- 20' of 12" Class III RCP @ 1.0%, Inv. In = 86.25, Inv. Out = 86.05.
- DI-1 Riser / Outlet Structure, Top = 90.25, Inv. = 86.25, H = 4.0'.
- 20' of 12" Class III RCP @ 3.75%, Inv. In = 85.25, Inv. Out = 84.5.
- DI-1 Riser / Outlet Structure, Top = 89.25, Inv. = 85.25, H = 4.0'.
- Typical 6" Dia. Sch. 40 PVC Connection To Each Downspout & Roof Drain. See Arch. & Plumbing Plans For Same.
- Typical 8" Dia. Sch. 40 PVC "Trunk Line" To Receive Downspout Roof Drain Pipes. See Plan For Invert Elevations. Provide Cleanouts @ 100' O.C. Max. See Sh. C5 For Headwall Detail.

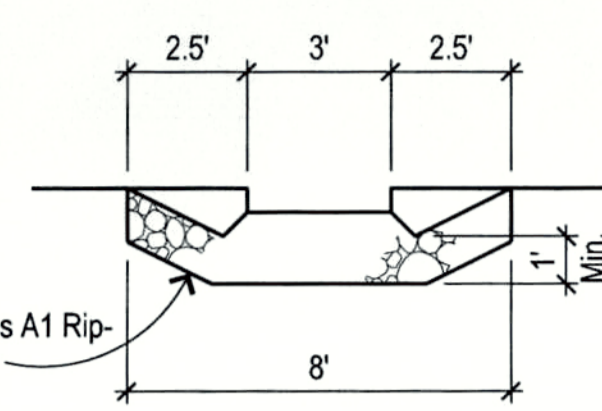
- Notes:**
- Dual wall HDPE pipe may be used in lieu of Sch. 40 PVC for roof drain piping if preferred by Contractor.
 - Pipe lengths include flared end section as applicable.



Plan



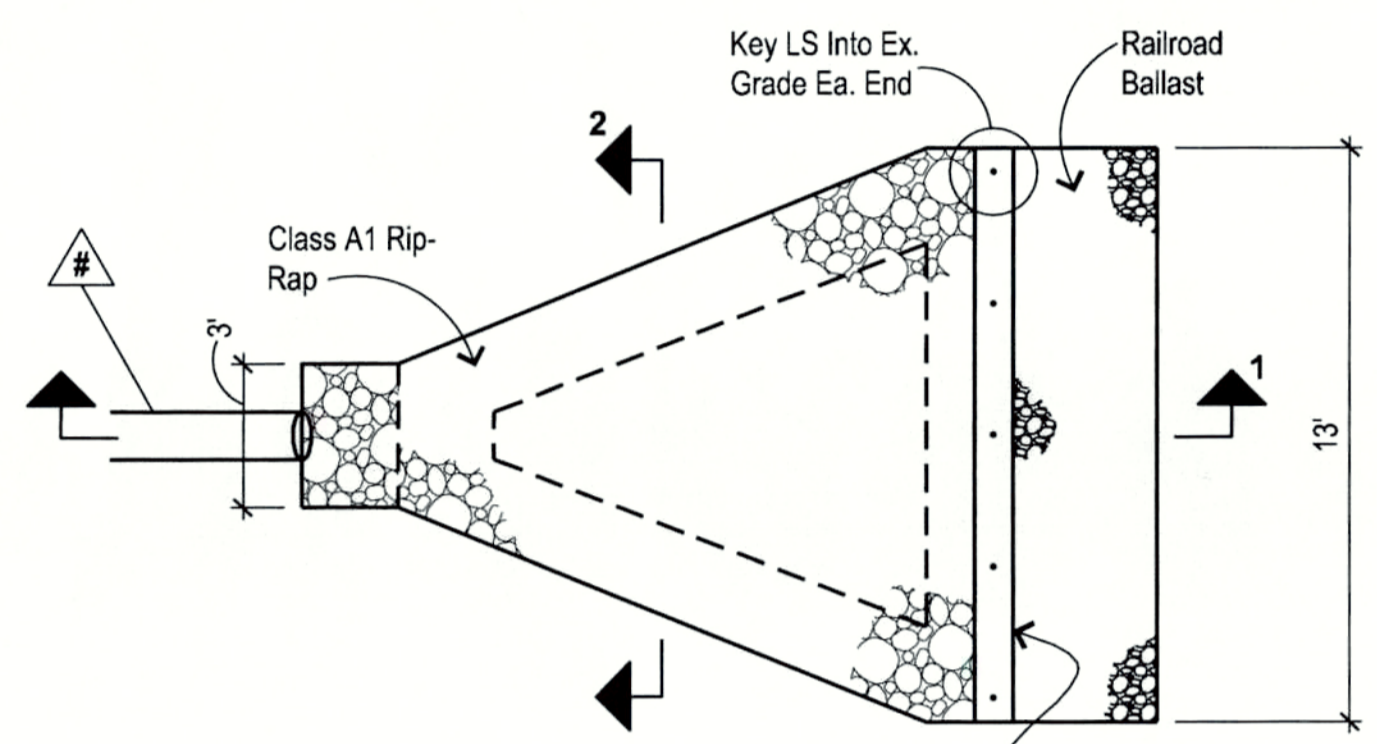
Section 1



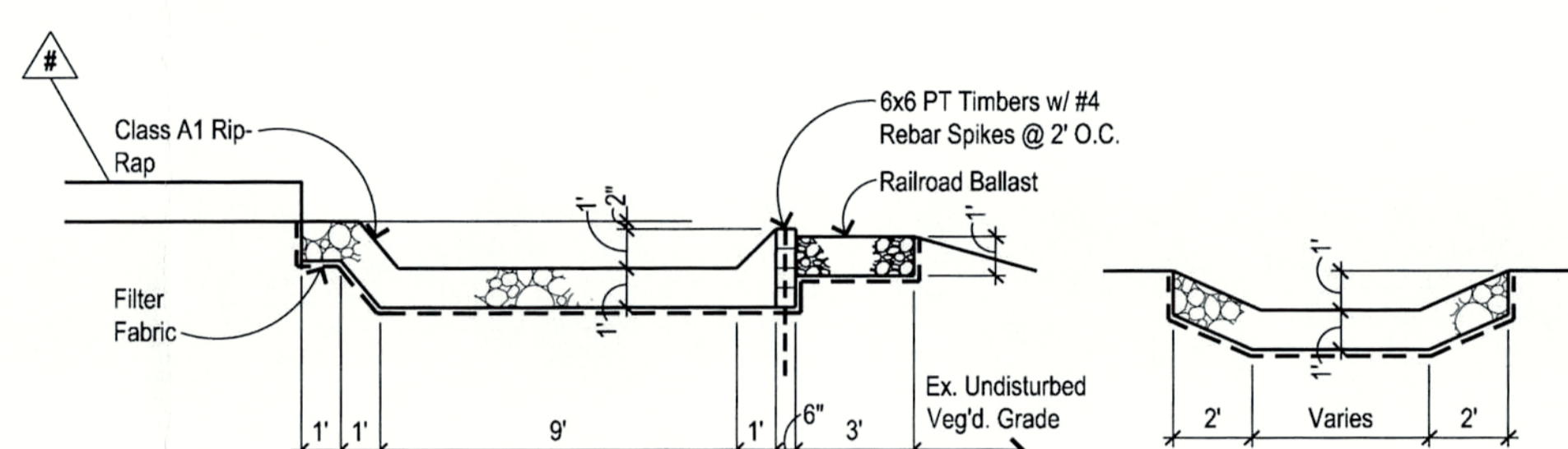
Section 2

Typ. Flume Spreader / Diaphragm Details

Scale: 1/4" = 1'-0"



Plan

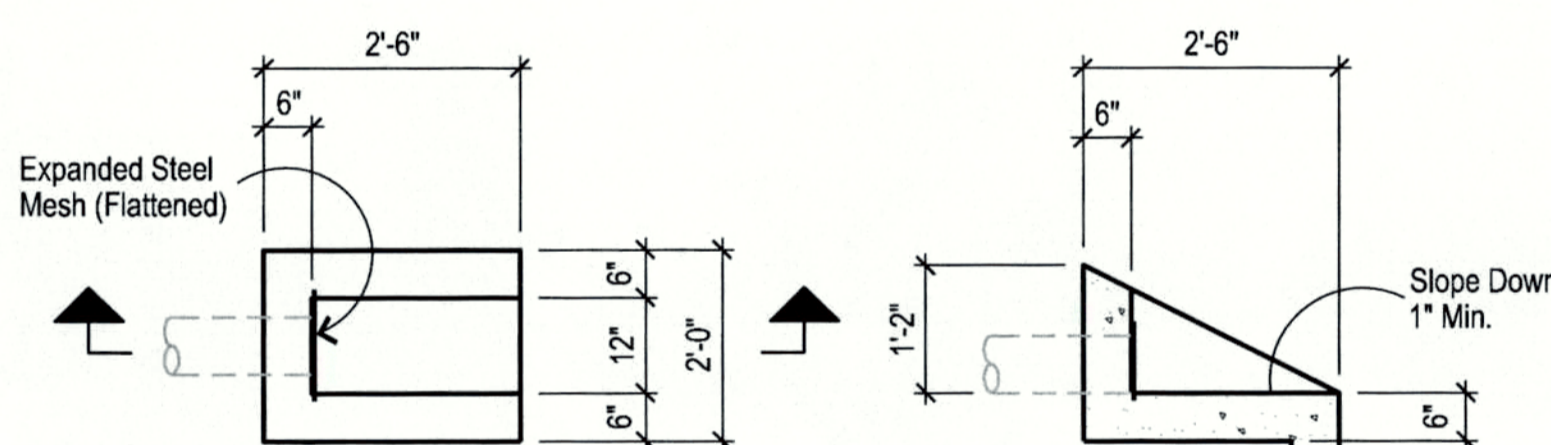


Section 1

Section 2

Typ. Level Spreader Details

Scale: 1/4" = 1'-0"

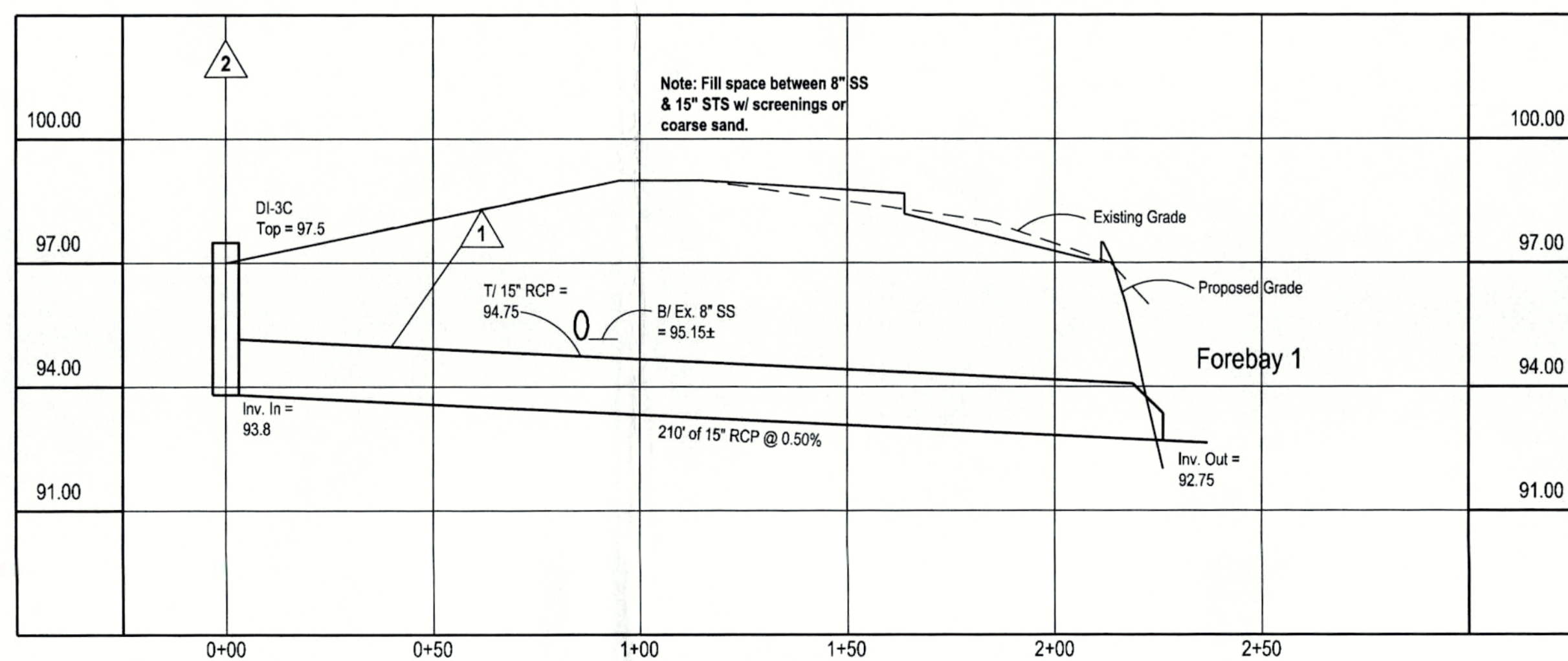


Plan

Section

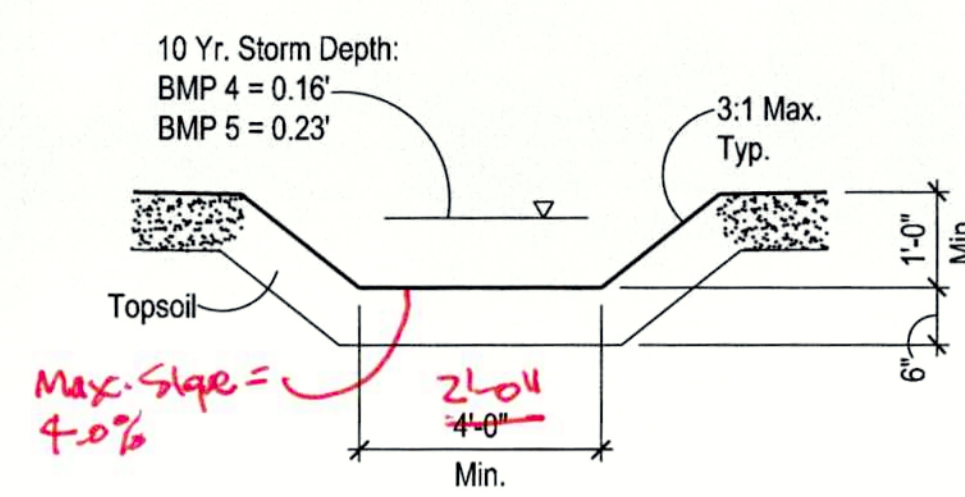
Typ. Endwall @ Roof Drain

No Scale



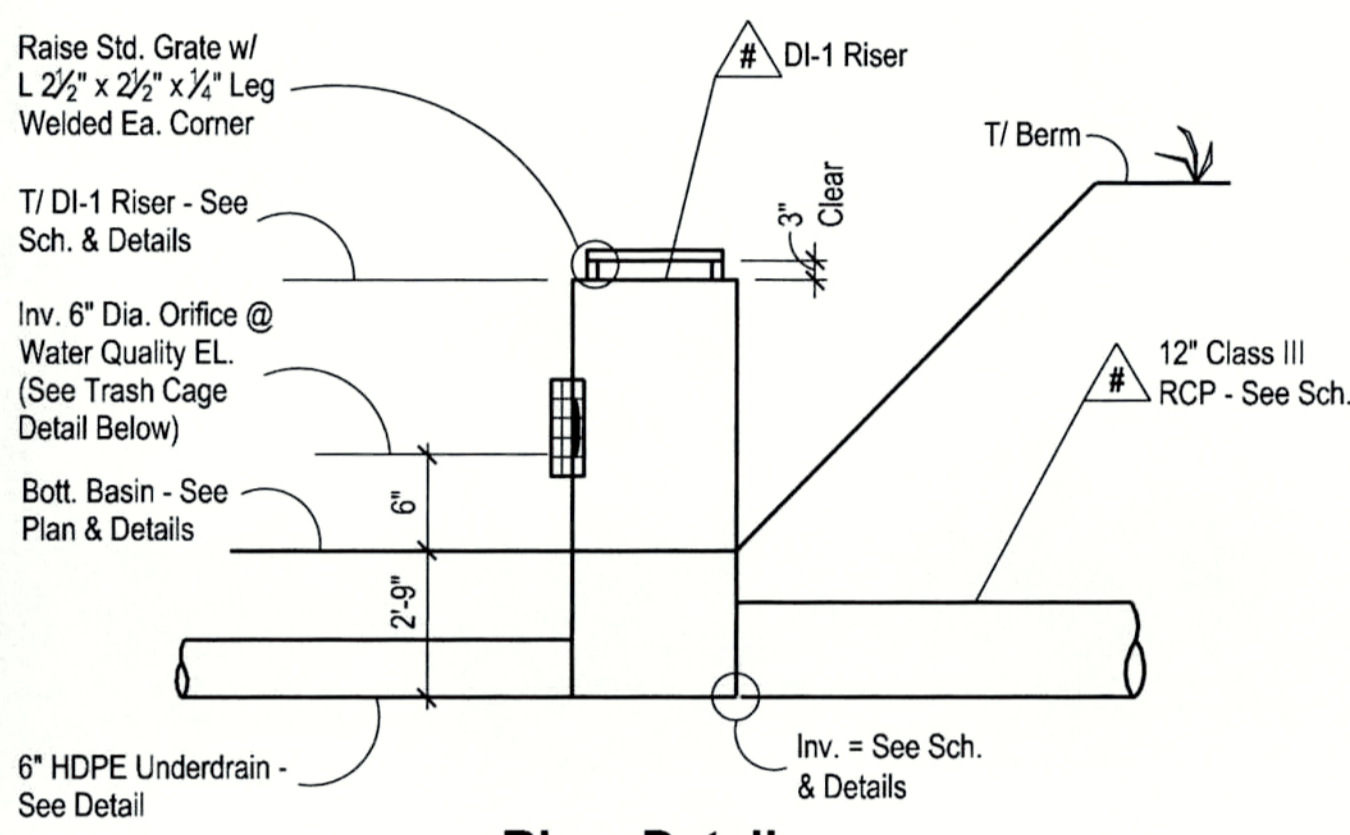
Storm Sewer Profile

Scale: Vert.: 1" = 3', Horiz.: 1" = 30'



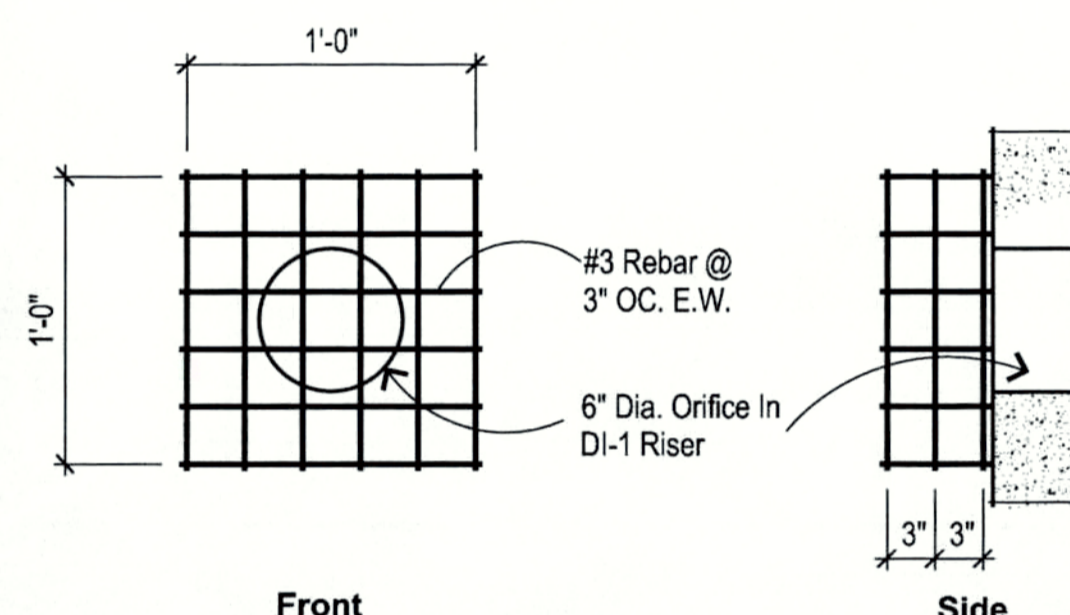
Perm. BMP 4 & 5

Grass Channel
Notes: Contractor shall ensure a good, thick stand of grass in BMP channels. See perm. seeding notes, Sheet C6.



Riser Detail

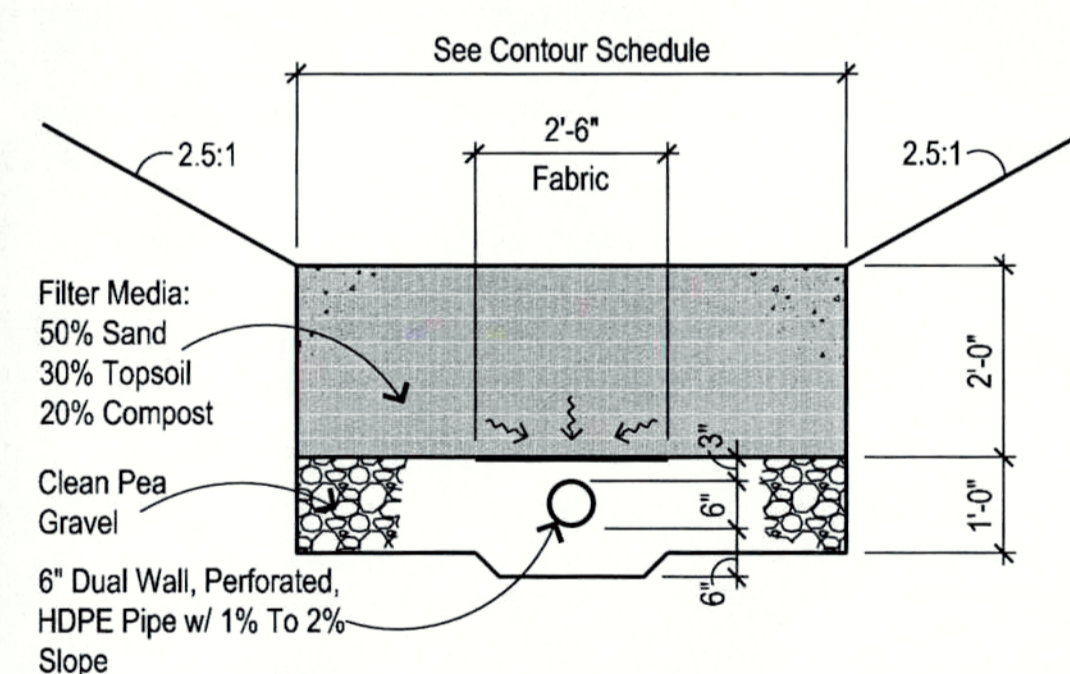
Scale: None



Trash Cage Detail

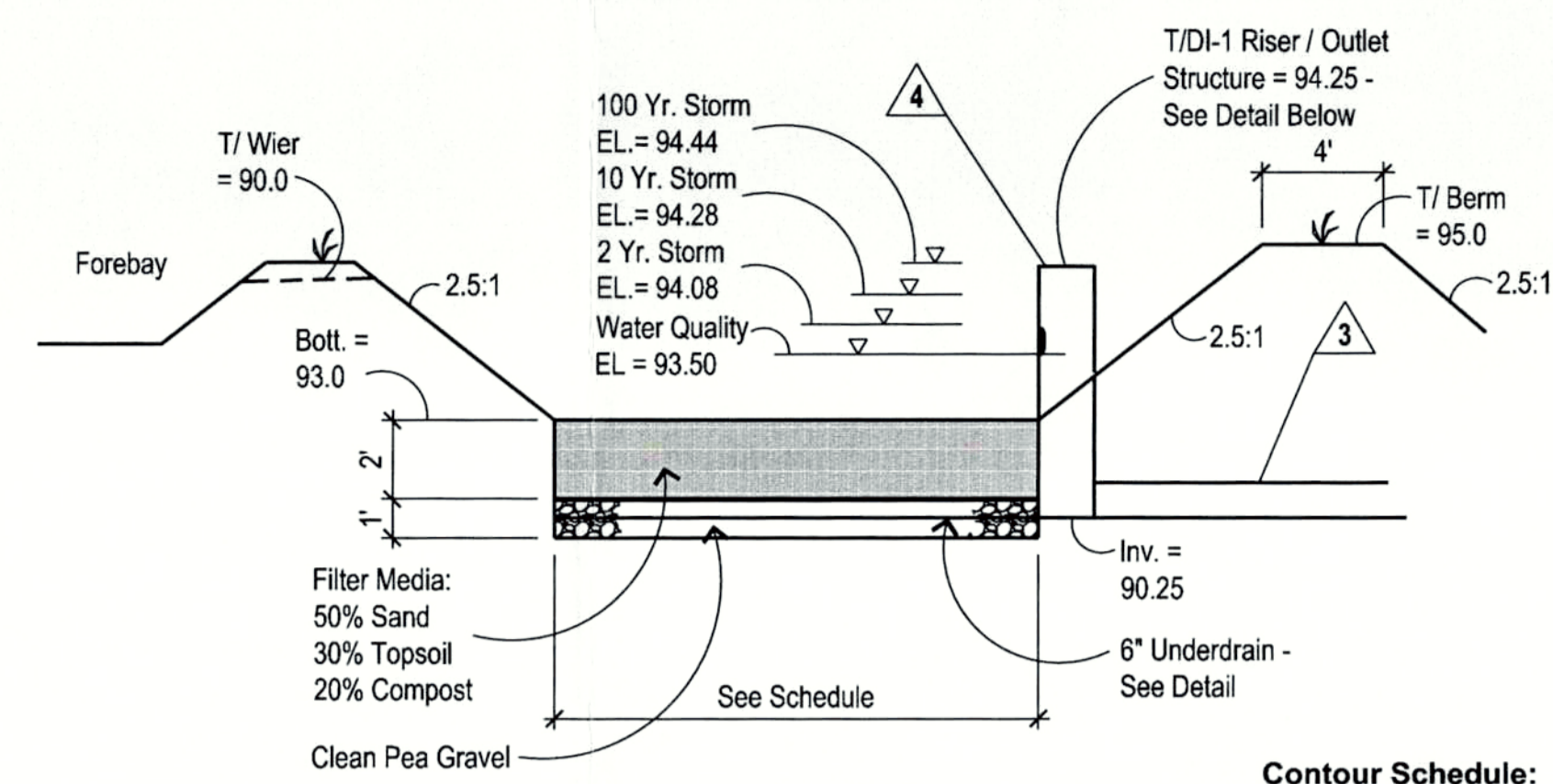
Scale: None

- Notes:
1. Spray or brush cage and fastenings w/ bituminous coating.
 2. Fasten cage to outlet structure or headwall with stainless steel wedge anchors thru tabs welded to cage @ (4) corners.



BMP Underdrain Detail

No Scale

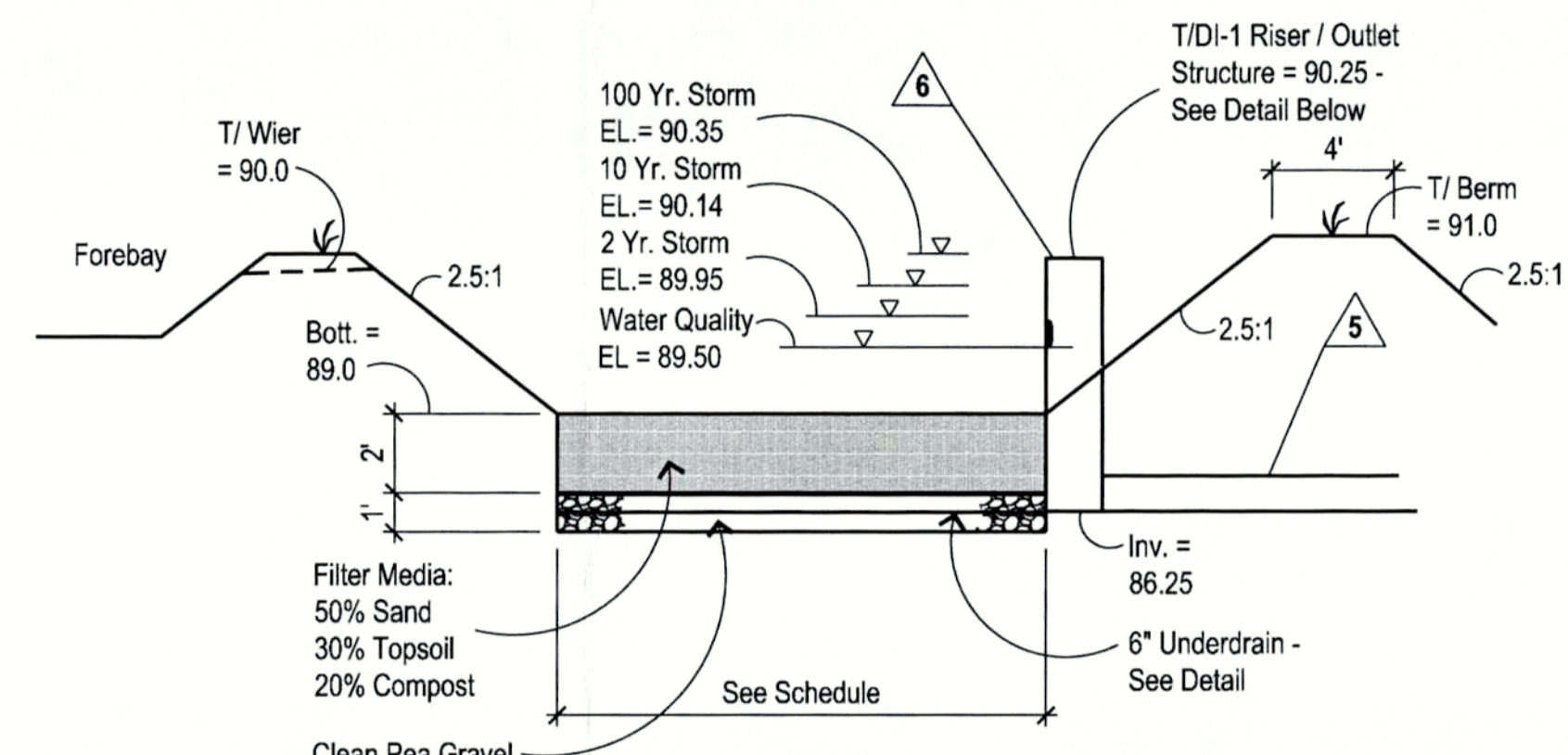


Permanent BMP 1

Bioretention - Level 1

EL.	Forebay 1	BMP1
92	130 sf Min.	---
93	288 sf Min.	722 sf Min.
94	482 sf Min.	1,285 sf Min.
95	717 sf Min.	1,835 sf Min.

- Important BMP Notes:
1. Contractor shall take care to protect topsoil mix from compaction. Once installed, machinery shall not be permitted on same.
 2. See Landscape Plan for planting information.
 3. Media shall be supplied by vendor with phosphorus index (P-Index) between 10 and 30.

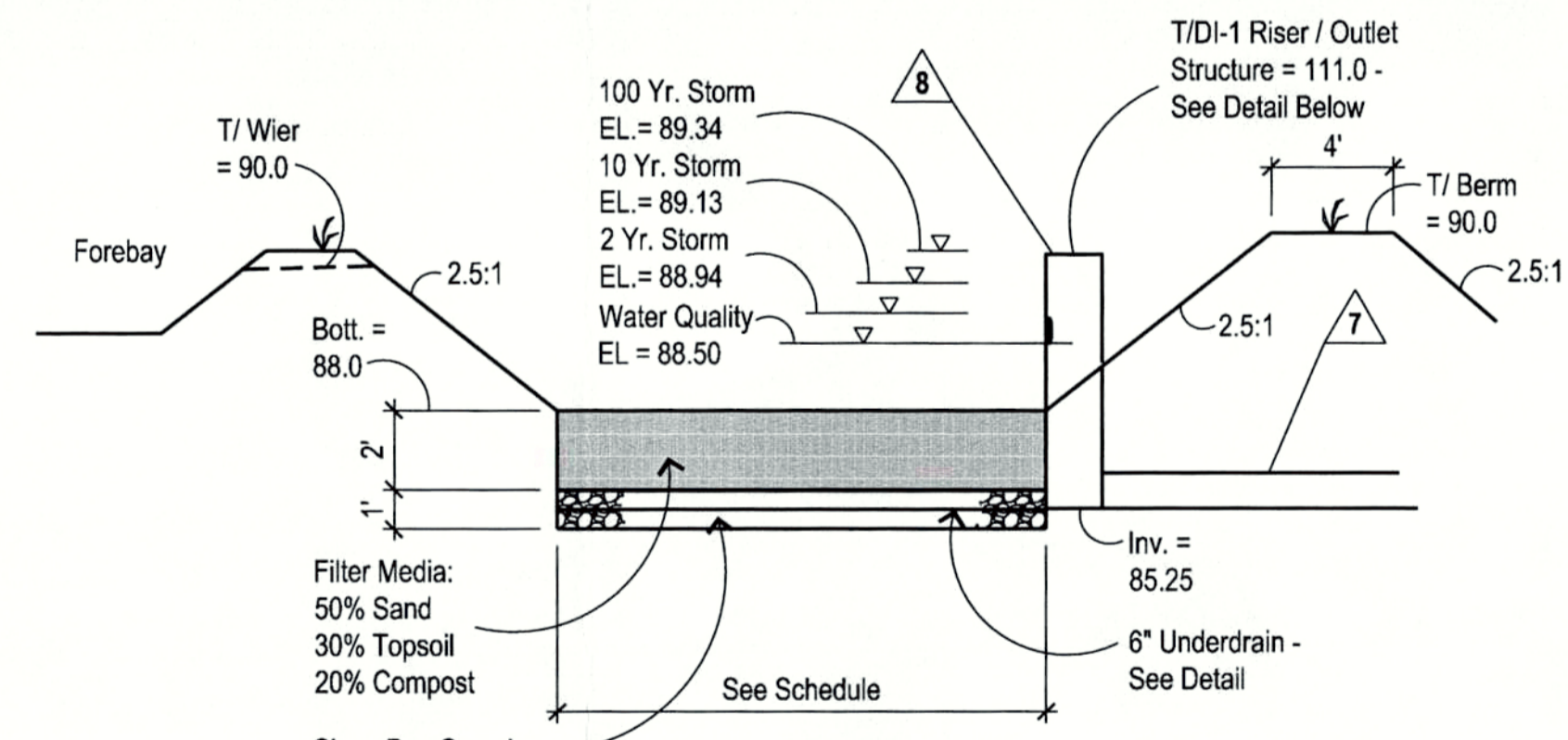


Permanent BMP 2

Bioretention - Level 1

EL.	Forebay 1	BMP1
88	115 sf Min.	---
89	208 sf Min.	881 sf Min.
90	373 sf Min.	1,210 sf Min.
91	591 sf Min.	1,580 sf Min.

- Important BMP Notes:
1. Contractor shall take care to protect topsoil mix from compaction. Once installed, machinery shall not be permitted on same.
 2. See Landscape Plan for planting information.
 3. Media shall be supplied by vendor with phosphorus index (P-Index) between 10 and 30.



Permanent BMP 3

Bioretention - Level 1

EL.	Forebay 3	BMP3
88	79 sf Min.	662 sf Min.
89	202 sf Min.	976 sf Min.
90	362 sf Min.	1,234 sf Min.
91	567 sf Min.	---

- Important BMP Notes:
1. Contractor shall take care to protect topsoil mix from compaction. Once installed, machinery shall not be permitted on same.
 2. See Landscape Plan for planting information.
 3. Media shall be supplied by vendor with phosphorus index (P-Index) between 10 and 30.

- Stone Notes:
1. Pea gravel shall comply with VDOT #8 stone.
 2. Railroad ballast shall comply with VDOT #3 stone.

BAXTER BAILEY & ASSOCIATES
ARCHITECTS

CONSULTING ENGINEER
Jeff Robinson
Lic. No. 021655

OWNER:
Dwight County Board of Supervisors
Daniel D. Lee - Chairman
Brenda K. Stone-Bonner - Vice Chairman
Dr. Mark E. Moore
William D. Chavis

MCKENNEY RECREATION CENTER
RAGSDALE COMMUNITY CENTER / phase I & phase II
DUNWIDDIE COUNTY, VIRGINIA

DATE: May 15, 2015
JOB NUMBER: J-239-10

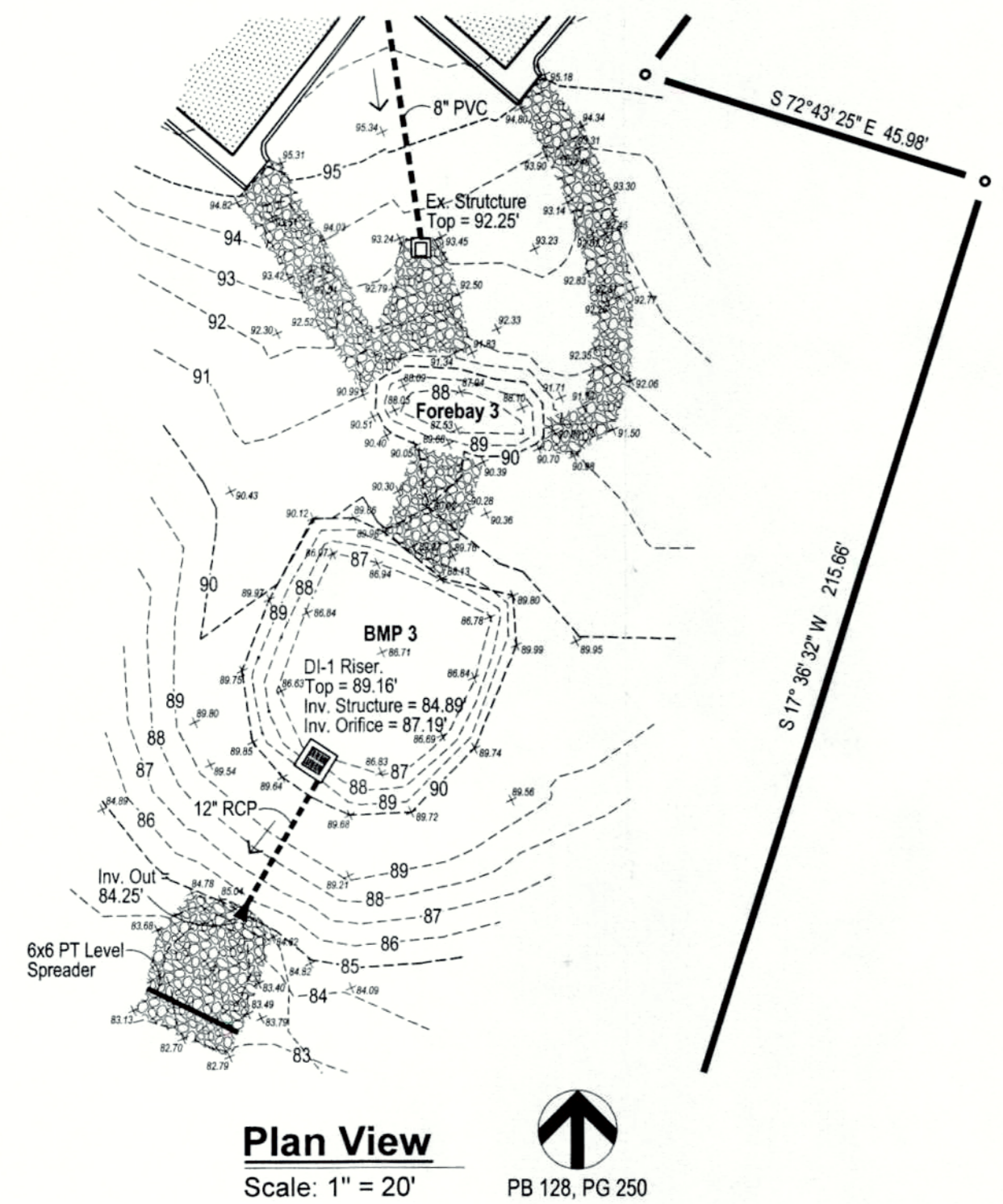
DESIGN BY:
DRAWN BY:
CHECKED BY:

REVISIONS:
June 1, 2015 per County Comments
Aug 27, 2015 per County Comments

COMMONWEALTH OF VIRGINIA
JEFF B. ROBINSON
Lic. No. 021655

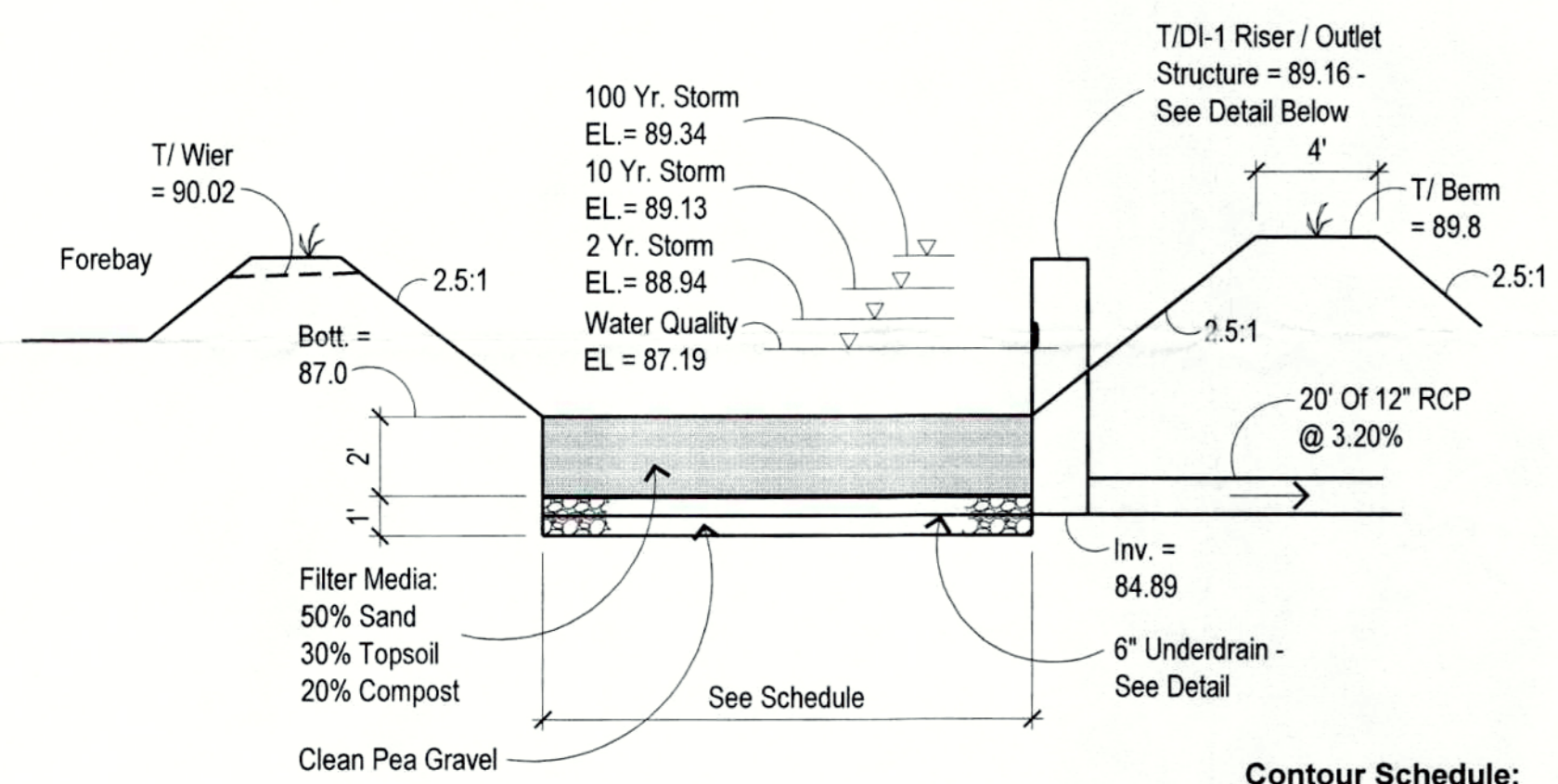
Stormwater
Details & Notes

C5 of 6



Plan View
Scale: 1" = 20'
PB 128, PG 250

Note:
1. Topographic info. taken from as-built survey prepared by Ronald H. Gordon & Assoc., received March 15, 2017.

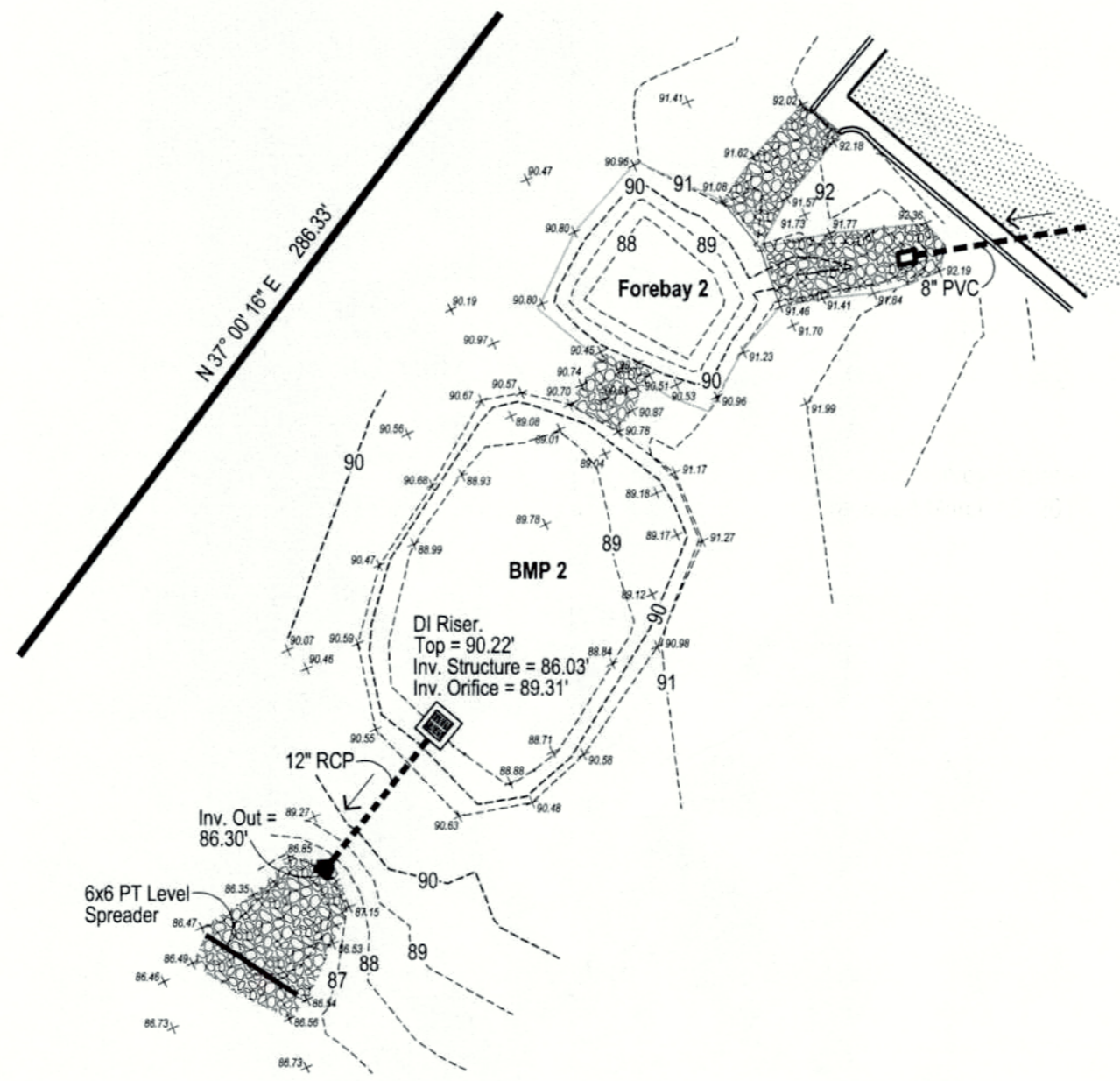


Profile View No Scale
Bioretention - Level 1

Contour Schedule:

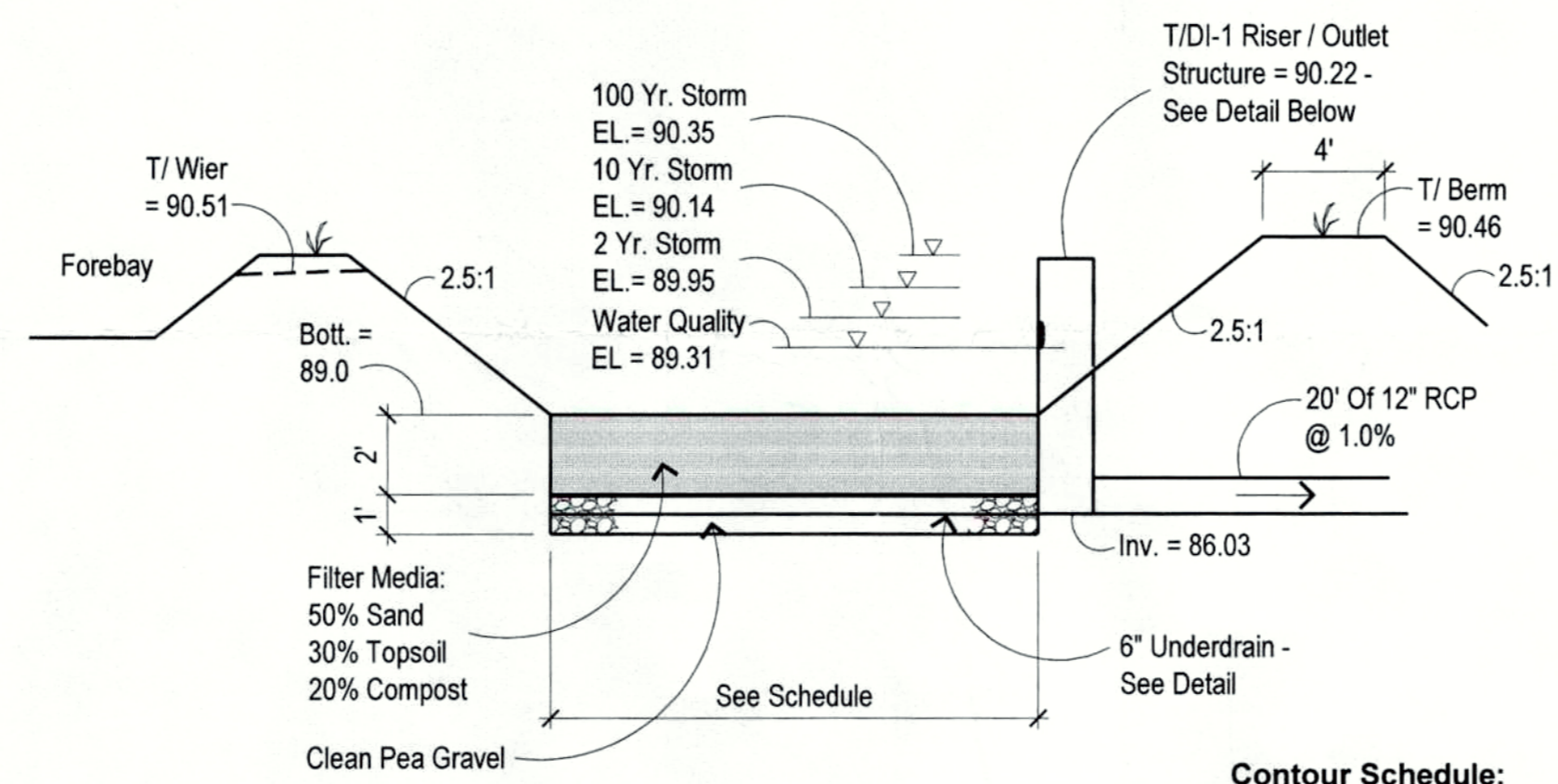
EL.	Forebay 3	BMP3
87	----	537 sf Min.
88	62 sf Min.	683 sf Min.
89	130 sf Min.	836 sf Min.
90	229 sf Min.	960 sf Min.
91	298 sf Min.	----

As-Built BMP 3



Plan View
Scale: 1" = 20'
PB 128, PG 250

Note:
1. Topographic info. taken from as-built survey prepared by Ronald H. Gordon & Assoc., received March 15, 2017.

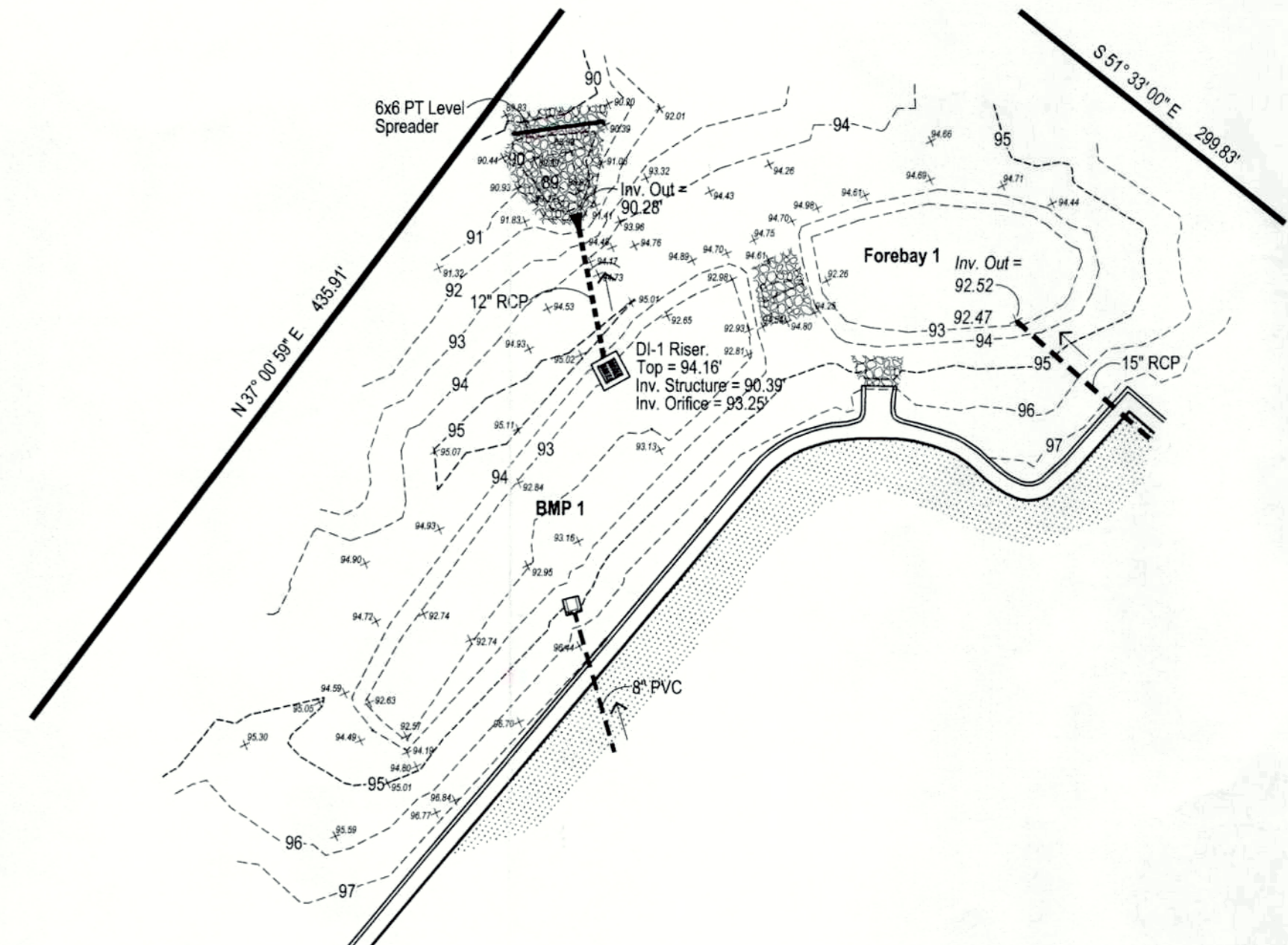


Profile View No Scale
Bioretention - Level 1

Contour Schedule:

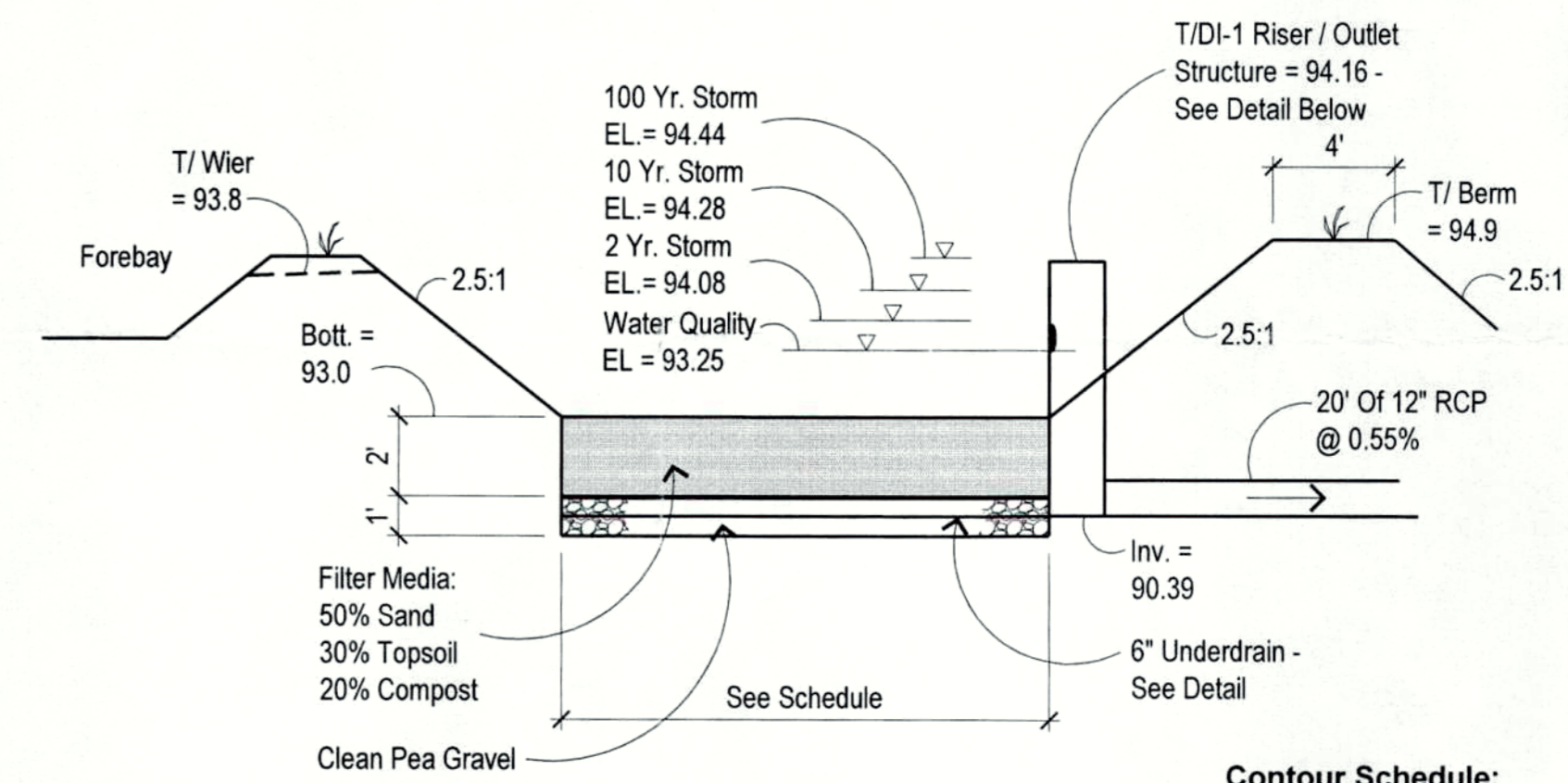
EL.	Forebay 2	BMP2
88	155 sf Min.	----
89	252 sf Min.	833 sf Min.
90	383 sf Min.	1,188 sf Min.
91	514 sf Min.	1,370 sf Min.

As-Built BMP 2



Plan View
Scale: 1" = 20'
PB 128, PG 250

Note:
1. Topographic info. taken from as-built survey prepared by Ronald H. Gordon & Assoc., received March 15, 2017.

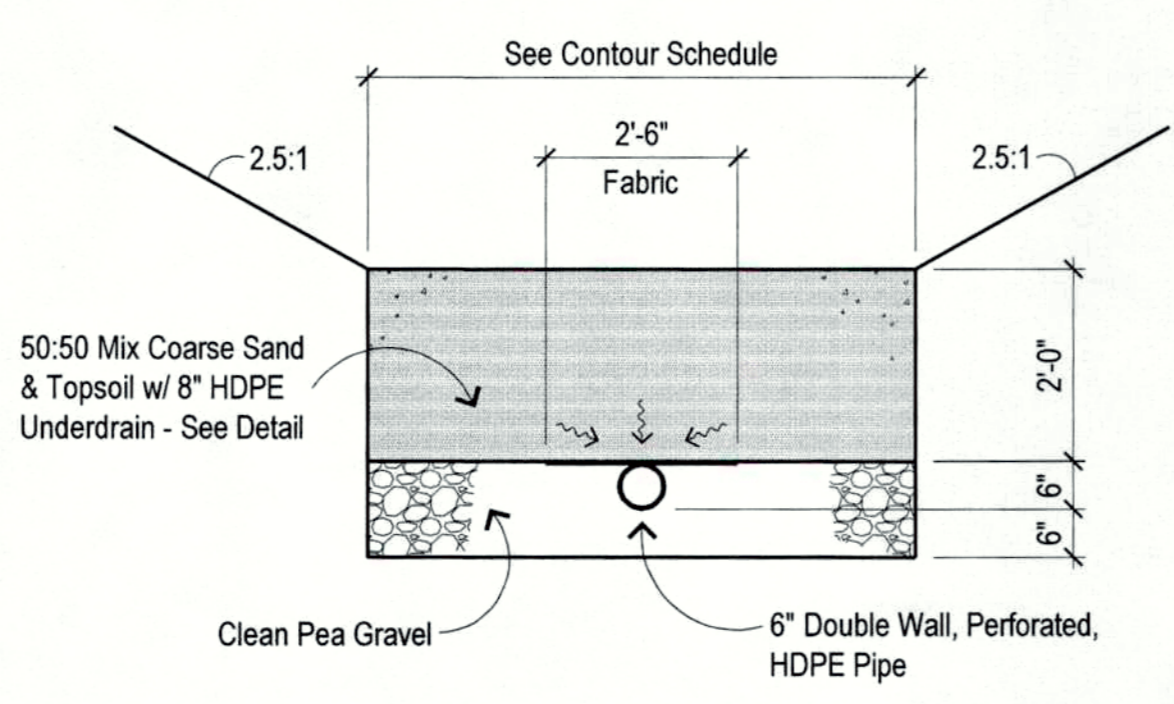


Profile View No Scale
Bioretention - Level 1

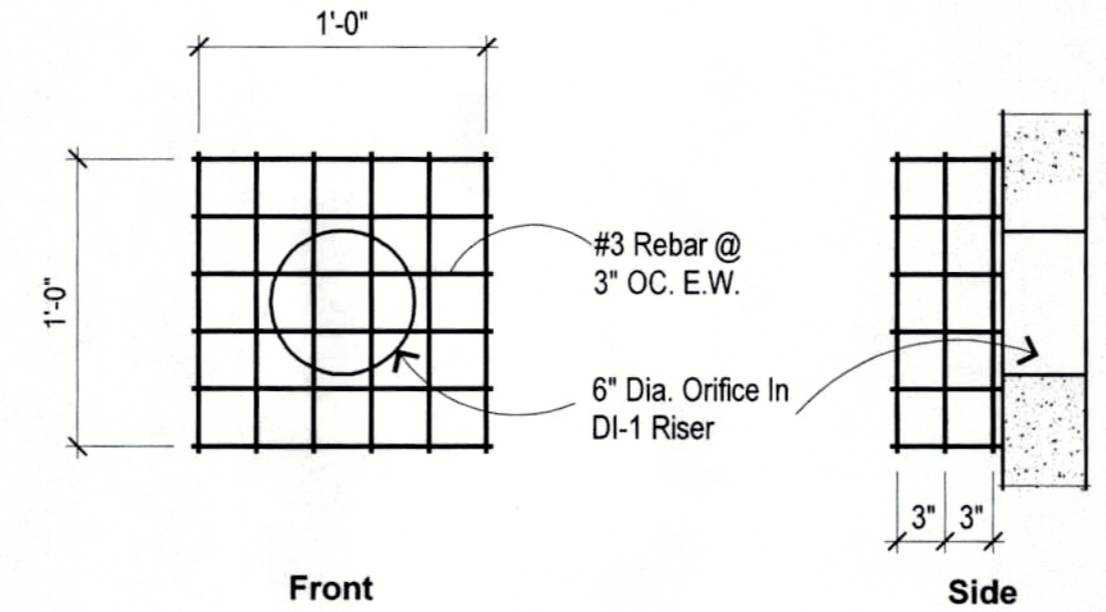
Contour Schedule:

EL.	Forebay 1	BMP1
93	533 sf Min.	690 sf Min.
94	731 sf Min.	1,228 sf Min.
95	1,094 sf Min.	1,809 sf Min.

As-Built BMP 1

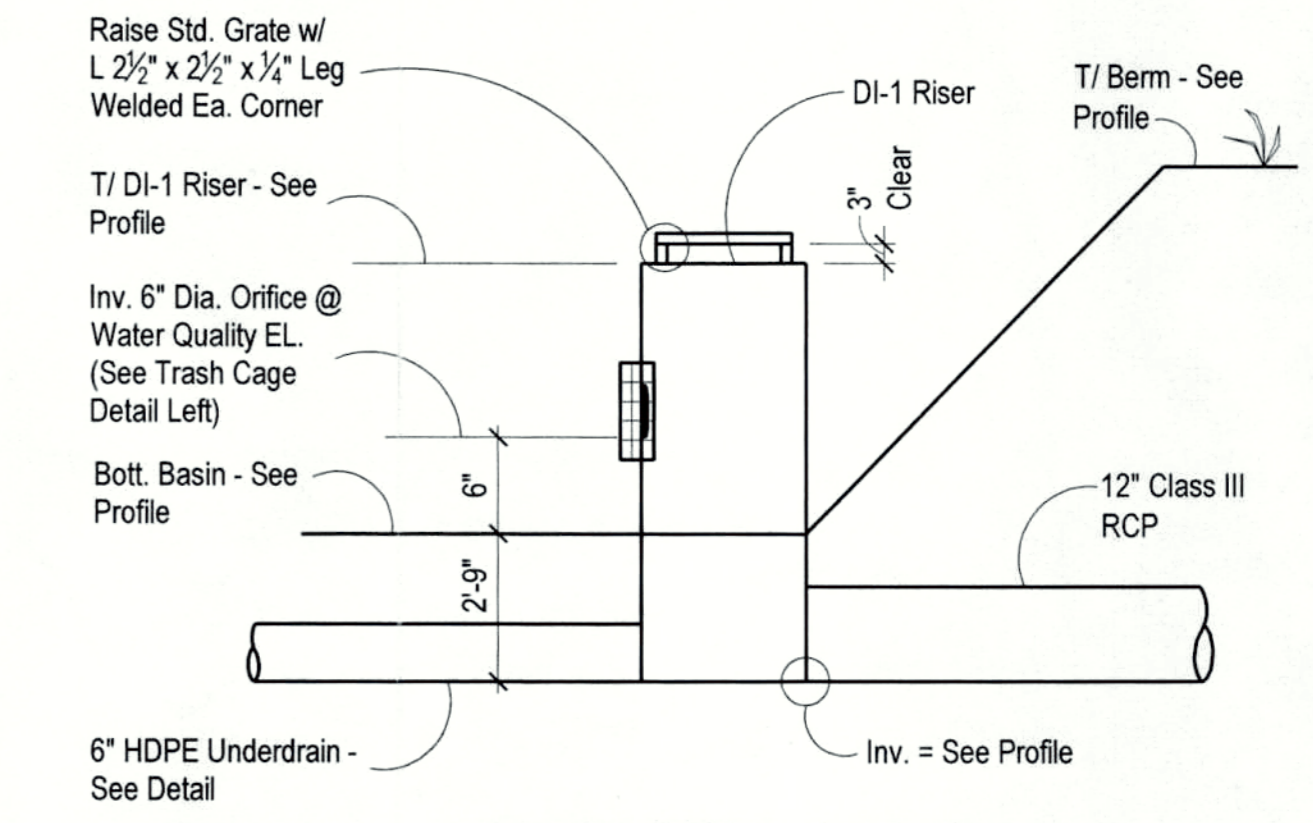


Typ. BMP Underdrain
No Scale



Typ. Trash Cage Detail
Scale: None

Notes:
1. Spray or brush cage and fastenings w/ bituminous coating.
2. Fasten cage to outlet structure or headwall with stainless steel wedge anchors thru tabs welded to cage @ (4) corners.

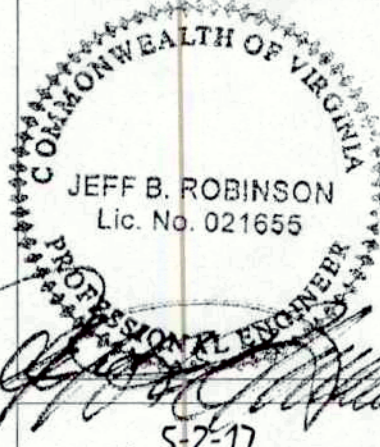


Typical Riser Detail
Scale: None

Exhibit B

As-Built BMP

Mckenney Recreation Center
Ragsdale Community Center - As-Built Plans
Dinwiddie County, VA 23841



CONSULTING ENGINEER
Post Office Box 65
23847
434-634-8965 (P)
434-634-0254 (K)
robinsong@raljpc.com



May 2, 2017

1 of 1