

CONSTRUCTION PLANS FOR BLUE JAY ROAD/ McCALL ROAD INTERSECTION IMPROVEMENTS EFFINGHAM COUNTY, GEORGIA

COUNTY OFFICIALS

WESLEY CORBITT
ROGER BURDETTE
FORREST FLOYD
JAMIE DELOACH
PHIL KIEFFER
REGGIE LOPER
TIM CALLANAN

CHAIRMAN
BOARD MEMBER
BOARD MEMBER
BOARD MEMBER
BOARD MEMBER
BOARD MEMBER
COUNTY ADMINISTRATOR

EFFINGHAM COUNTY
BOARD OF COMMISSIONERS
JUNE 2020

INDEX OF DRAWINGS

SHEET No.	TITLE
1	COVER PAGE
2	OVERALL LAYOUT
3-4	DEMOLITION PLAN
5-11	ROADWAY PLAN AND PROFILE
12-14	SIGNAGE AND STRIPING PLANS
15-16	CONSTRUCTION DETAILS
17-19	EROSION CONTROL PLAN
20-22	EROSION CONTROL DETAILS
23-26	PHASING PLAN

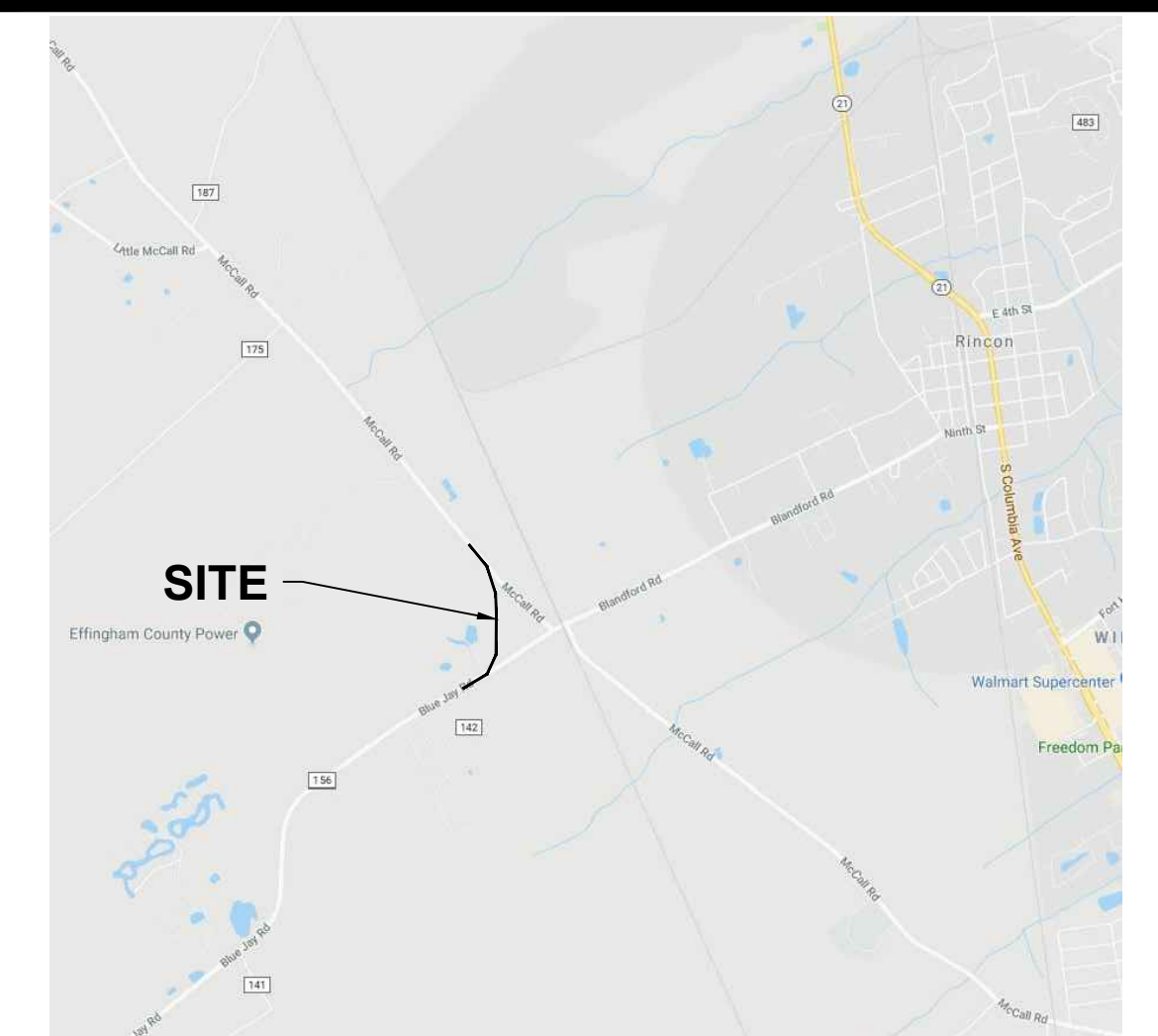


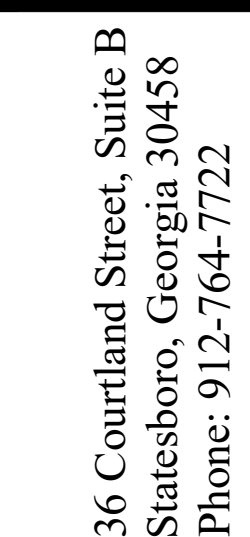
36 COURTLAND STREET, SUITE B
STATESBORO, GEORGIA 30458
PHONE: 912-764-7722



PROJECT #: PE18190

VICINITY MAP





**BLUE JAY/MCCALL ROAD
INTERSECTION IMPROVEMENTS
EFFINGHAM COUNTY, GA**
prepared for:
EFFINGHAM COUNTY BOC

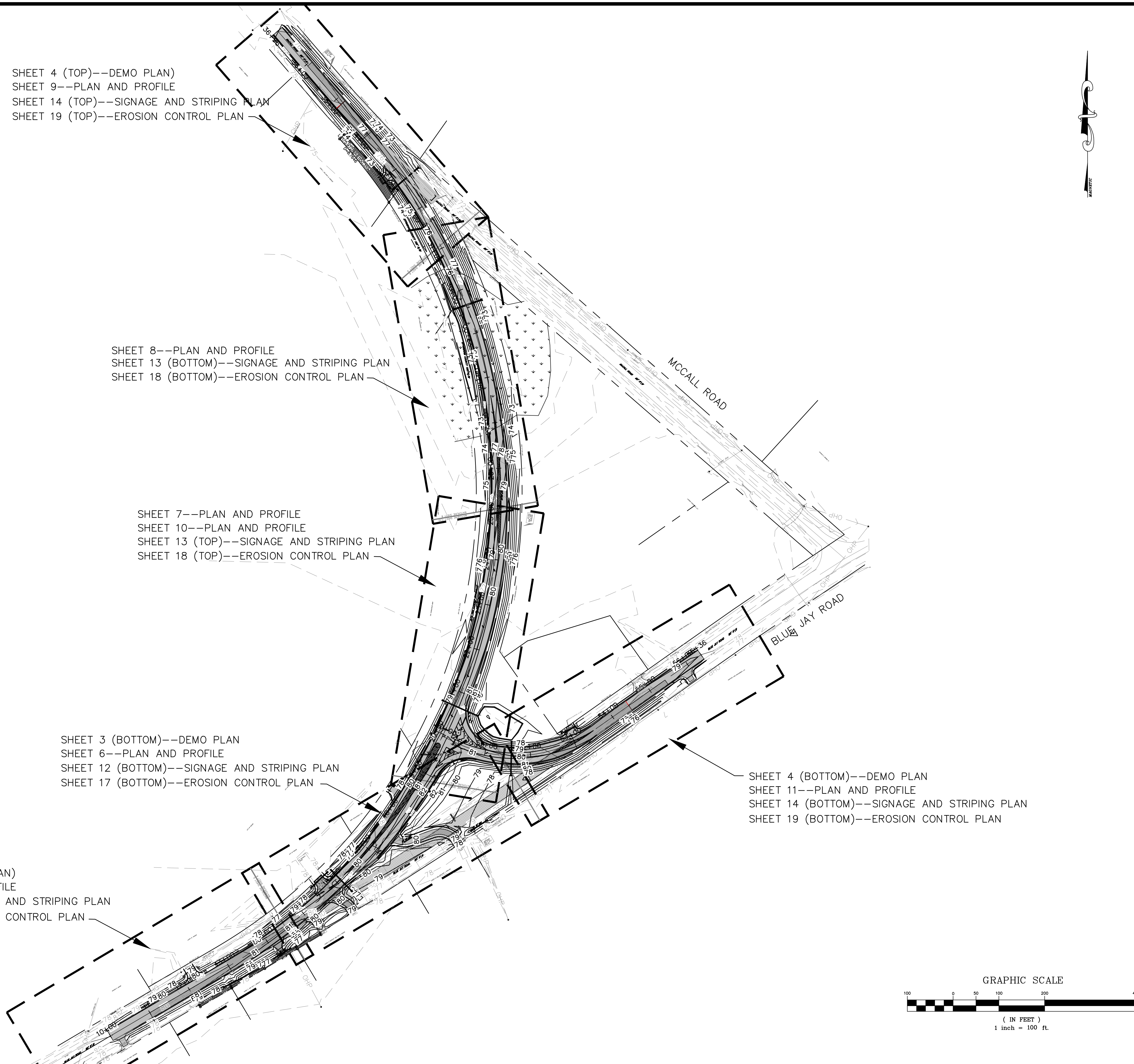
[illegible]

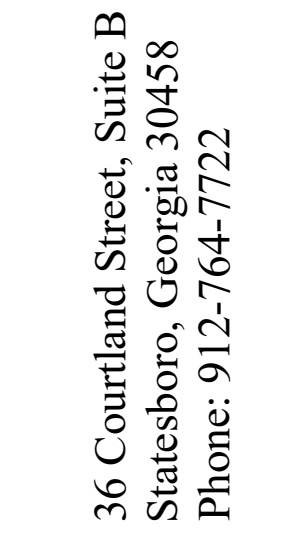
Sheet Title:

OVERALL
PLAN

Drawn by:	WAS
Designed by:	WAS
Checked by:	GWP
Scale:	1"=100'
Project No.	

PE18190

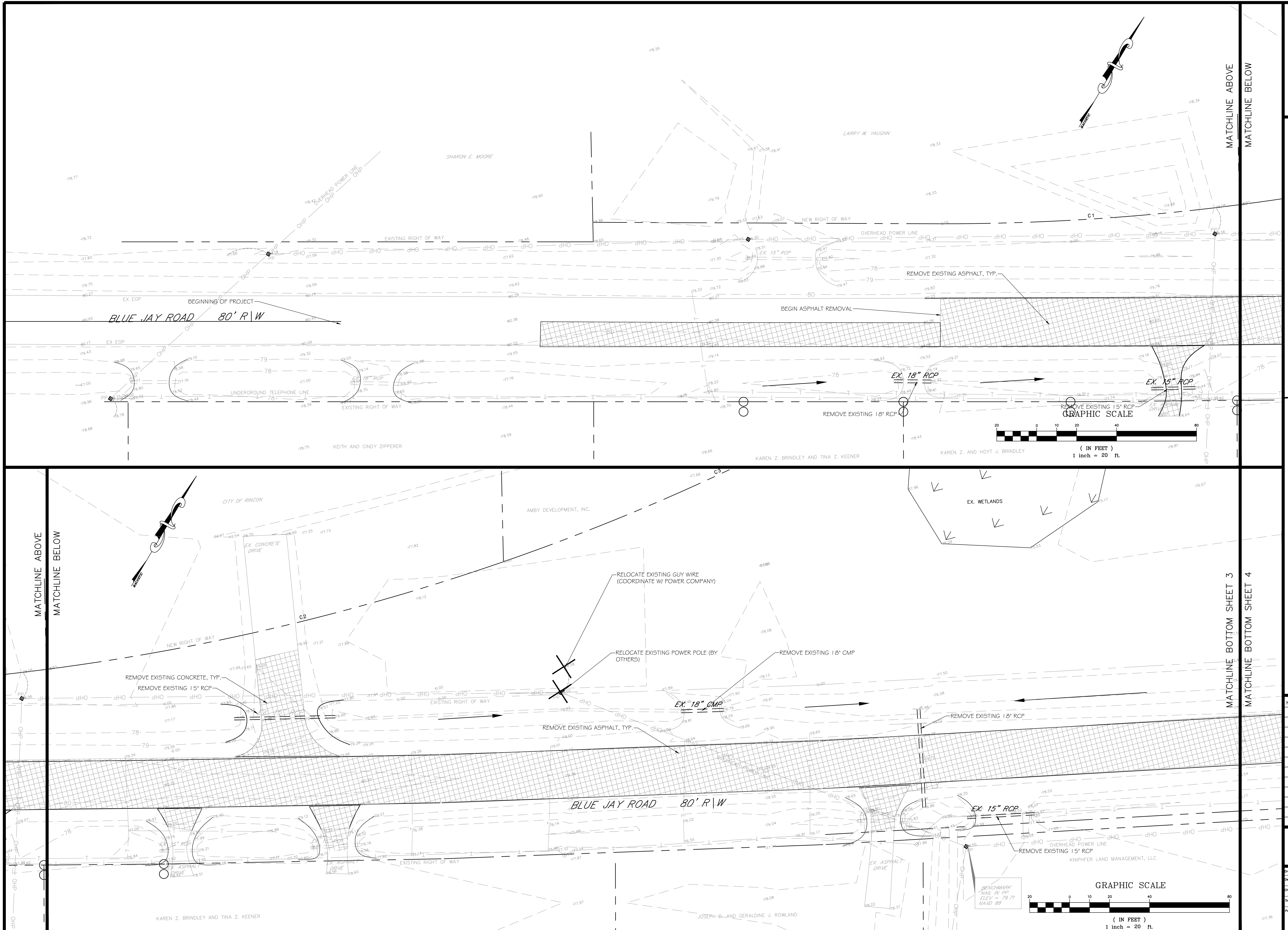


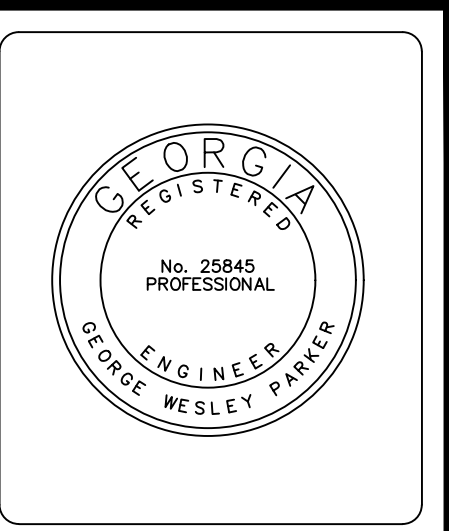
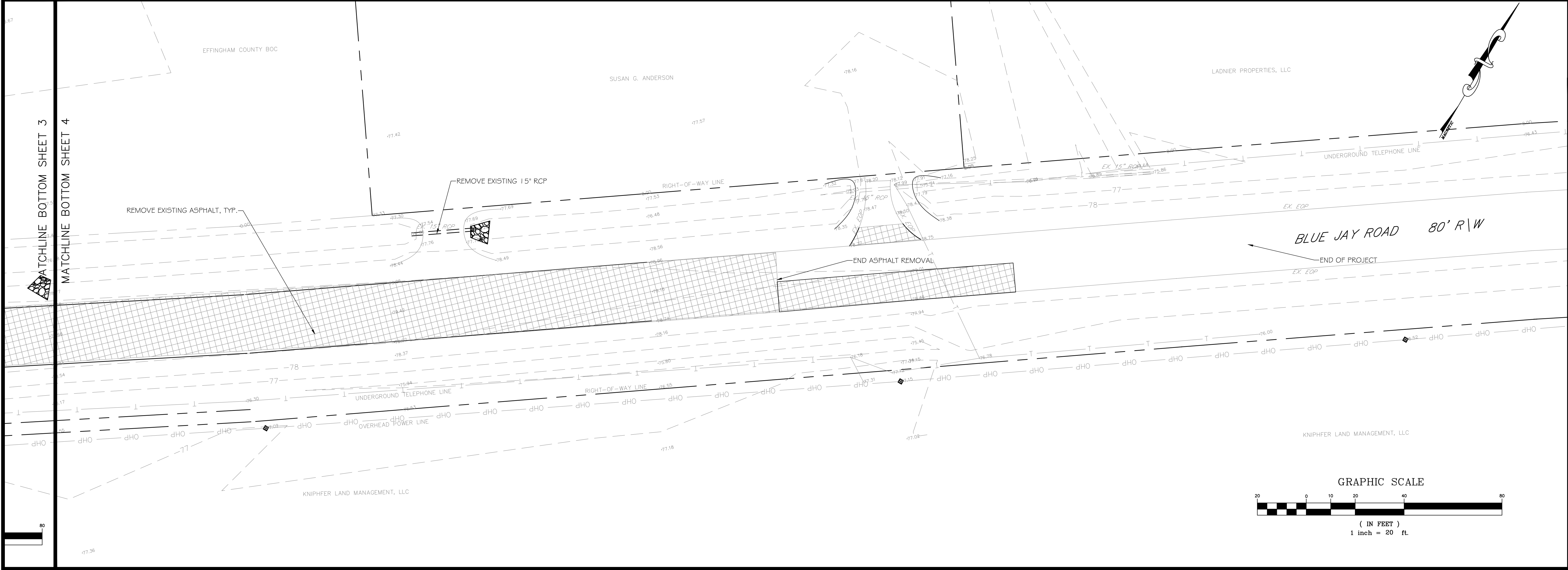


**BLUE JAY/MCCALL ROAD
INTERSECTION IMPROVEMENTS
EFFINGHAM COUNTY, GA
prepared for:
EFFINGHAM COUNTY BOC**

[illegible]

Sheet Title:		DEMOLITION PLAN	
Drawn by:	WAS	Sheet	3
Designed by:	WAS		
Checked by:	GWP		
Scale:	1" = 20'		
Project No.	PE18190		





36 Courtland Street, Suite B
Statesboro, Georgia 30458
Phone: 912-764-7722



**BLUE JAY/MCCALL ROAD
INTERSECTION IMPROVEMENTS
EFFINGHAM COUNTY, GA**
prepared for:
EFFINGHAM COUNTY BOC

No.	Date	Revision

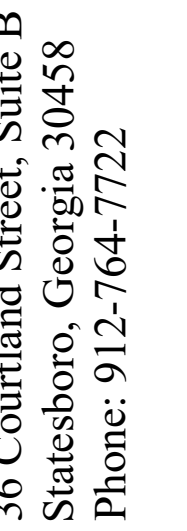
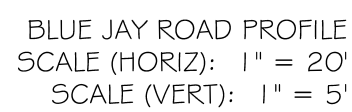
Sheet Title:
DEMOLITION PLAN

Drawn by:	WAS	Sheet	4
Designed by:	WAS		
Checked by:	GWP		
Project No.	PE18190		

Scale: 1" = 20'

<p>PARKWAY EXTENSION DESIGN SPEED 55 MPH SUPERELEVATION: $F_s = 0.13$ see code $E = (55 \wedge 2) / (15 * 1200) =$ $.13 = .03\phi$</p> <p>use 0.06 (GDOT RURAL emax)</p> <p>tangent runoff--(lane width*cross slope rate)/superelevation runoff rate</p> <p>lw = 12.5 feet cross slope rate= .02 SRR = .0025</p> <p>tangent runoff = 1.00 ft</p> <p>SE runoff distance = (lane width * superelevation)/SRR</p> <p>SE runoff = 300 ft.</p>	<p>BLANFORD TIE-IN DESIGN SPEED 30 MPH SUPERELEVATION: $F_s = 0.20$ see code $E = (30 \wedge 2) / (15 * 300) =$ $.20 = .0\phi$</p> <p>use 0.06 (GDOT RURAL emax)</p> <p>tangent runoff--(lane width*cross slope rate)/superelevation runoff rate</p> <p>lw = 12.0 feet cross slope rate= .02 SRR = .0025</p> <p>tangent runoff = 96 ft</p> <p>SE runoff distance = (lane width * superelevation)/SRR</p> <p>SE runoff = 288 ft.</p>
---	---

1. SEE SUPERELEVATION CALCULATIONS ABOVE.
2. ROAD SHOULDER OVERALL WIDTH DESIGNED FOR CONSISTENCY WITH EXISTING ROADWAY CONDITIONS.
3. TRAFFIC SIGNS TO BE PROVIDED AND INSTALLED PER MUTCD.
4. ASPHALT STRIPING, MARKINGS, RUMBLE STRIPS AND RPMs TO BE PROVIDED AND INSTALLED PER GDOT.
5. SEE DETAILS.
6. LIGHTING IS NOT WARRANTED FOR THIS PROJECT PER GDOT STANDARD.
7. ALL BMPs ARE PER GSWCC STANDARDS (SEE EROSION CONTROL DETAILS).
8. ALL STORM WATER SYSTEM COMPONENTS PER COUNTY STANDARDS.
9. NO GUARDRAILS ARE NECESSITATED FOR THIS PROJECT (FORESLOPES ARE 4:1 SLOPE).
10. ALL ROADWAY TESTING TO MEETING GDOT STANDARDS.
11. COUNTY INTERSECTION OF DISTURBED AREAS SHALL BE AT LEAST PARTIALLY OPEN AT ALL TIMES. NO DETOUR SIGNAGE ANTICIPATED. SHOULD CONDITIONS CHANGE, DETOUR SIGNAGE SHALL BE PROVIDED AND INSTALLED PER MUTCD.
12. GRASSING OF DISTURBED AREAS SHALL BE IN ACCORDANCE WITH GSWCC STANDARDS.



**BLUE JAY/MCCALL ROAD
INTERSECTION IMPROVEMENTS
EFFINGHAM COUNTY, GA**
prepared for:
EFFINGHAM COUNTY BOC

[illegible]

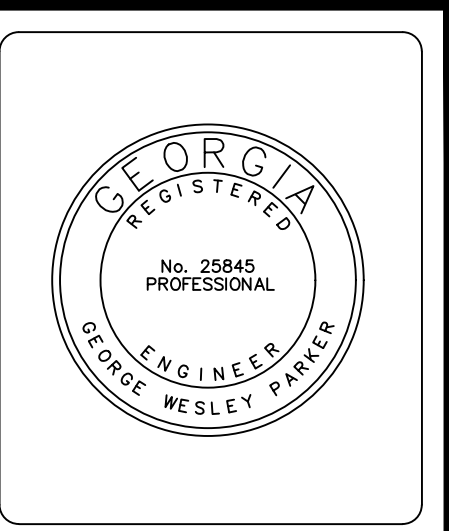
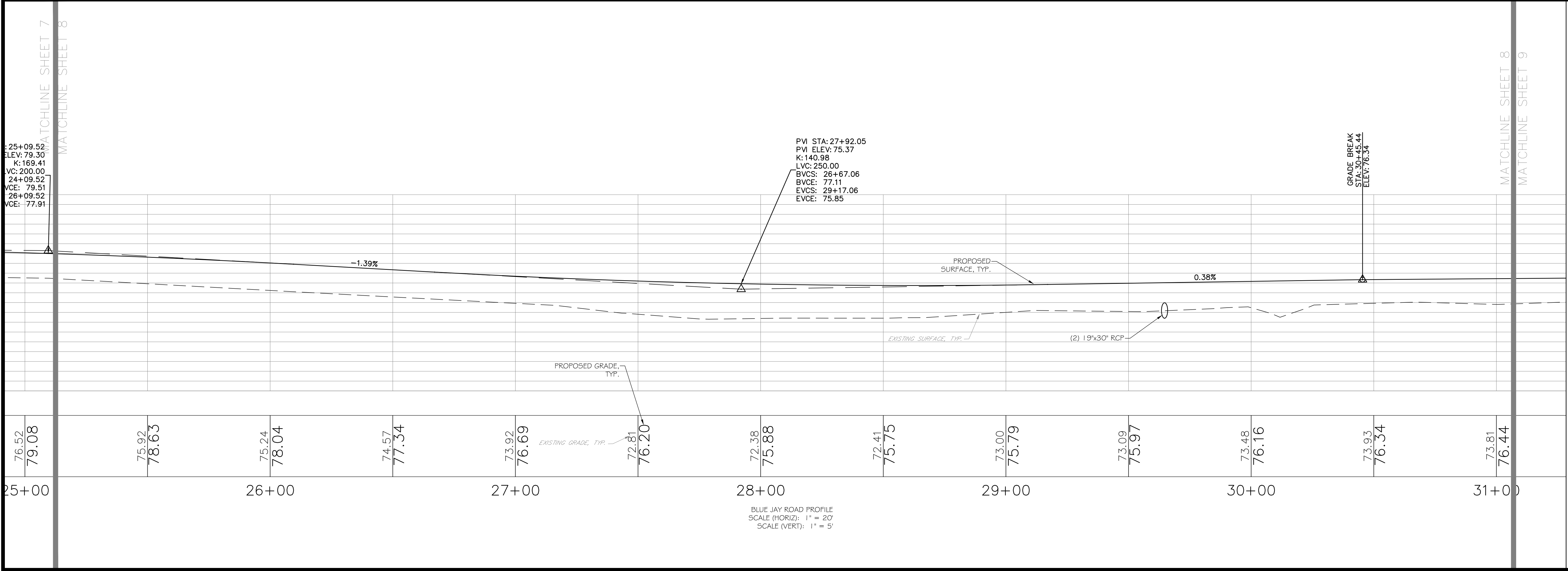
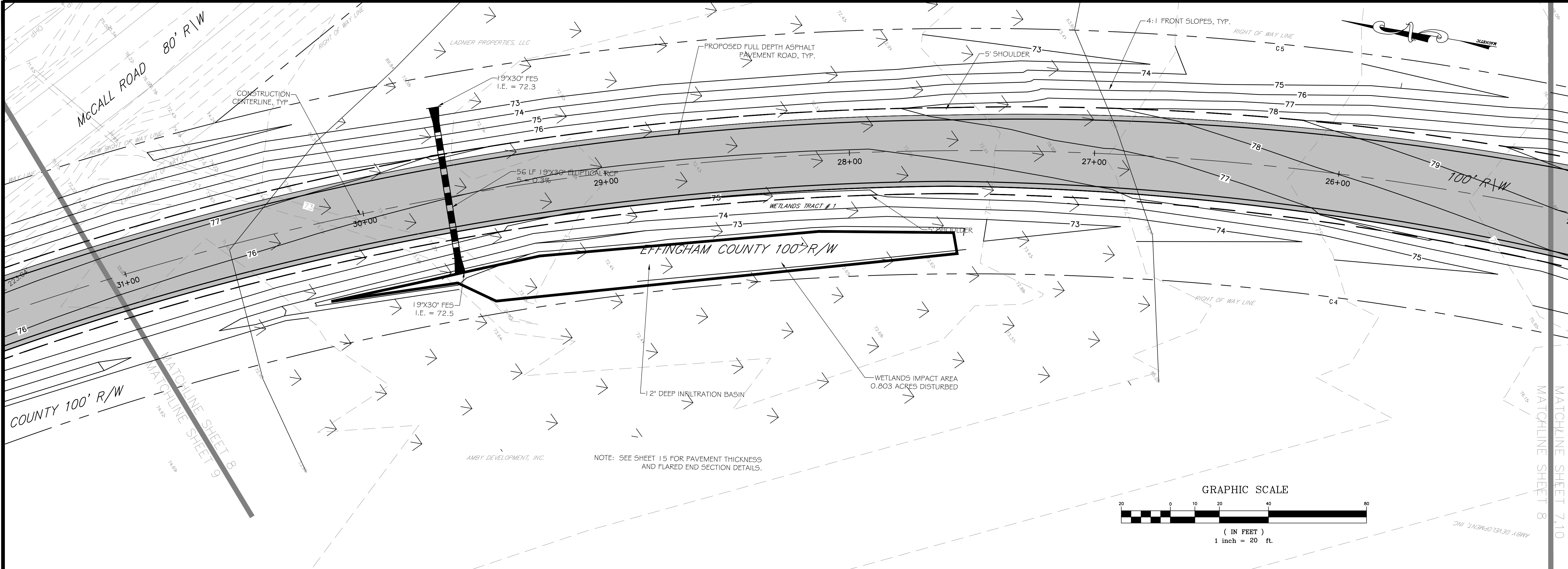
Sheet Title:

ROADWAY
PLAN AND PROFILE

Drawn by:	WAS	Sheet
Designed by:	WAS	
Checked by:	GWP	
Scale:	1"=20'	
Project No.		

WAS	5
GWP	

E18190



36 Courtland Street, Suite B
Statesboro, Georgia 30458
Phone: 912-764-7722



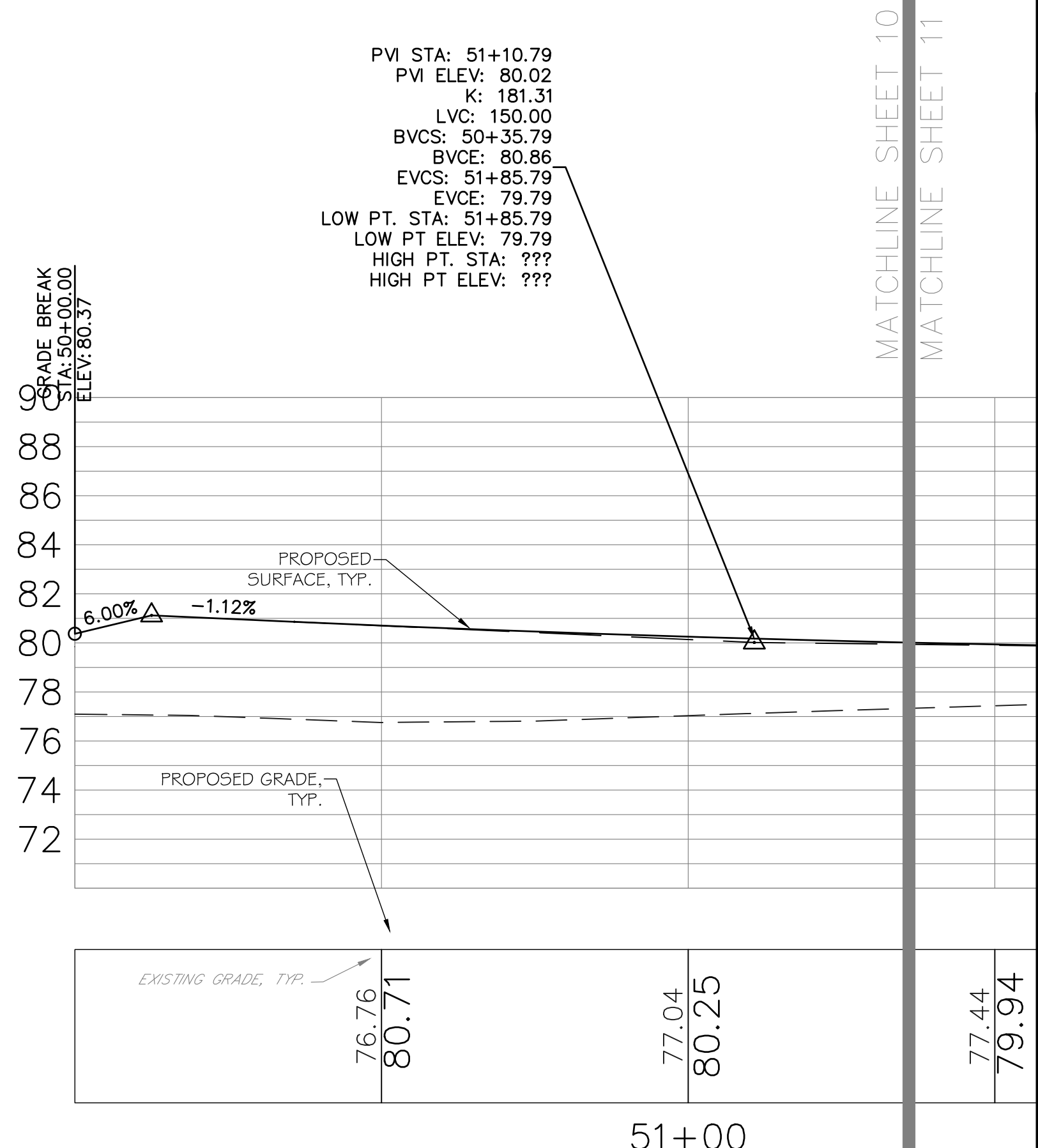
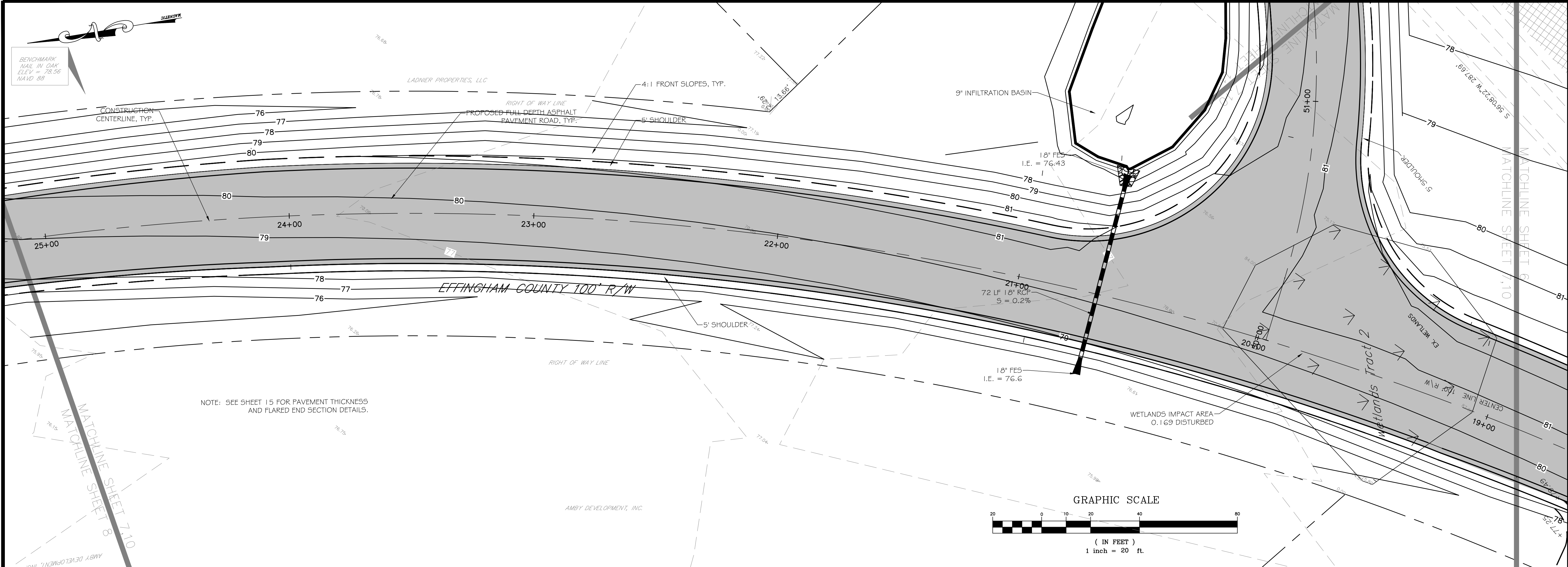
**BLUE JAY/MCCALL ROAD
INTERSECTION IMPROVEMENTS
EFFINGHAM COUNTY, GA**
prepared for:
EFFINGHAM COUNTY BOC

No.	Date	Revision

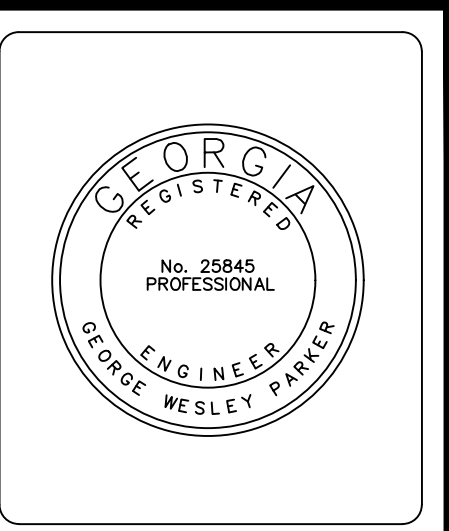
Sheet Title:
**ROADWAY
PLAN AND PROFILE**

Drawn by: **WAS**
Designed by: **WAS**
Checked by: **GWP**
Scale: **1" = 20'**
Project No.: **PE18190**

Sheet
8



BLANFORD ROAD PROFILE
SCALE (HORIZ): 1" = 20'
SCALE (VERT): 1" = 5'



36 Courtland Street, Suite B
Statesboro, Georgia 30458
Phone: 912-764-7722



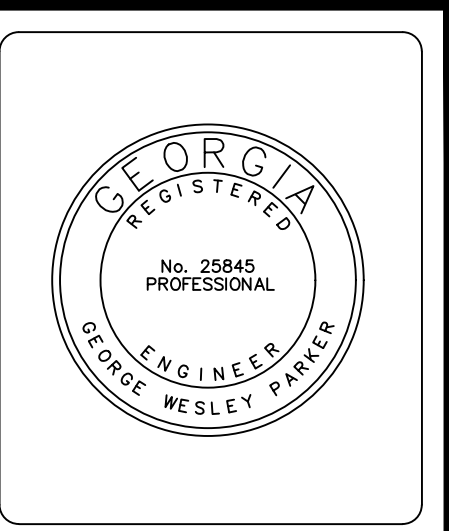
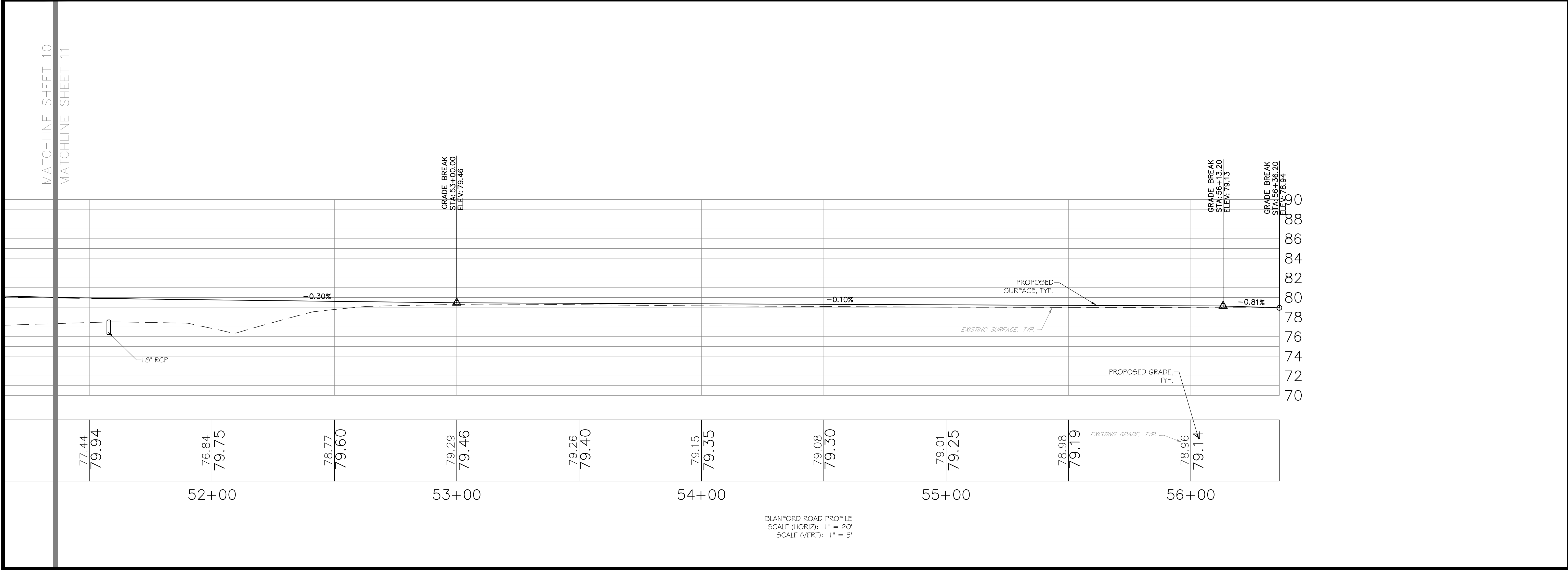
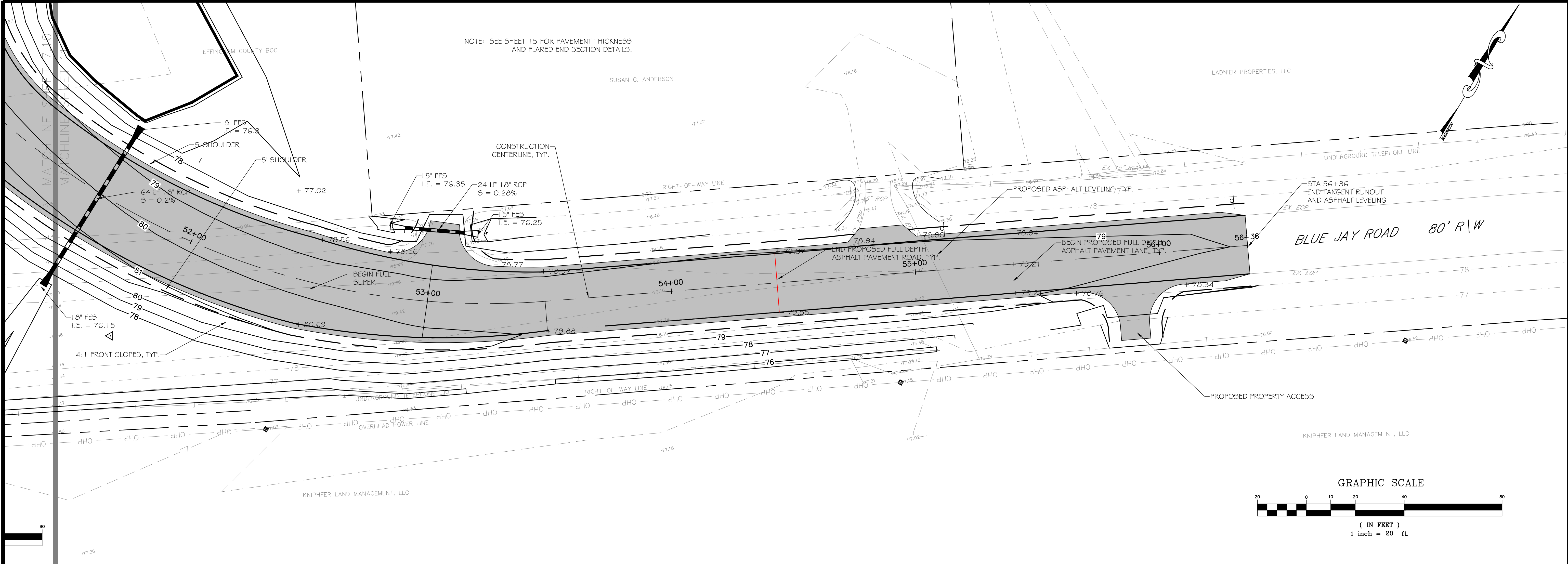
**BLUE JAY/MCCALL ROAD
INTERSECTION IMPROVEMENTS
EFFINGHAM COUNTY, GA**
prepared for:
EFFINGHAM COUNTY BOC

No.	Date	Revision

Sheet Title:
**ROADWAY
PLAN AND PROFILE**

Drawn by: **WAS**
Designed by: **WAS**
Checked by: **GWP**
Scale: **1" = 20'**
Project No.: **PE18190**

Sheet
10



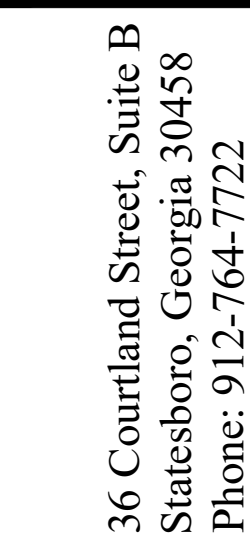
36 Courtland Street, Suite B
Statesboro, Georgia 30458
Phone: 912-764-7722



**BLUE JAY/MCCALL ROAD
INTERSECTION IMPROVEMENTS
EFFINGHAM COUNTY, GA**
prepared for:
EFFINGHAM COUNTY BOC

No.	Date	Revision

Sheet Title: ROADWAY PLAN AND PROFILE	
Drawn by: WAS	Sheet
Designed by: WAS	11
Checked by: GWP	
Scale: 1" = 20'	
Project No.	PE18190



**BLUE JAY/MCCALL ROAD
INTERSECTION IMPROVEMENTS
EFFINGHAM COUNTY, GA
prepared for:
EFFINGHAM COUNTY BOC**

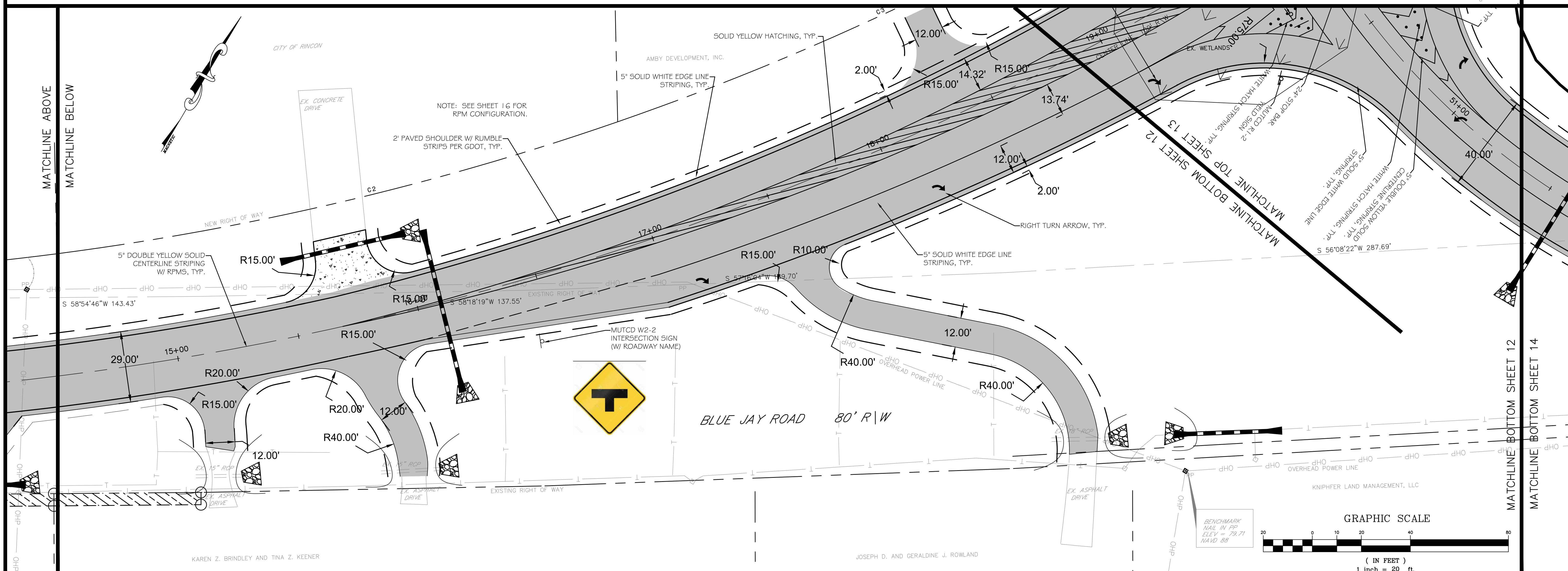
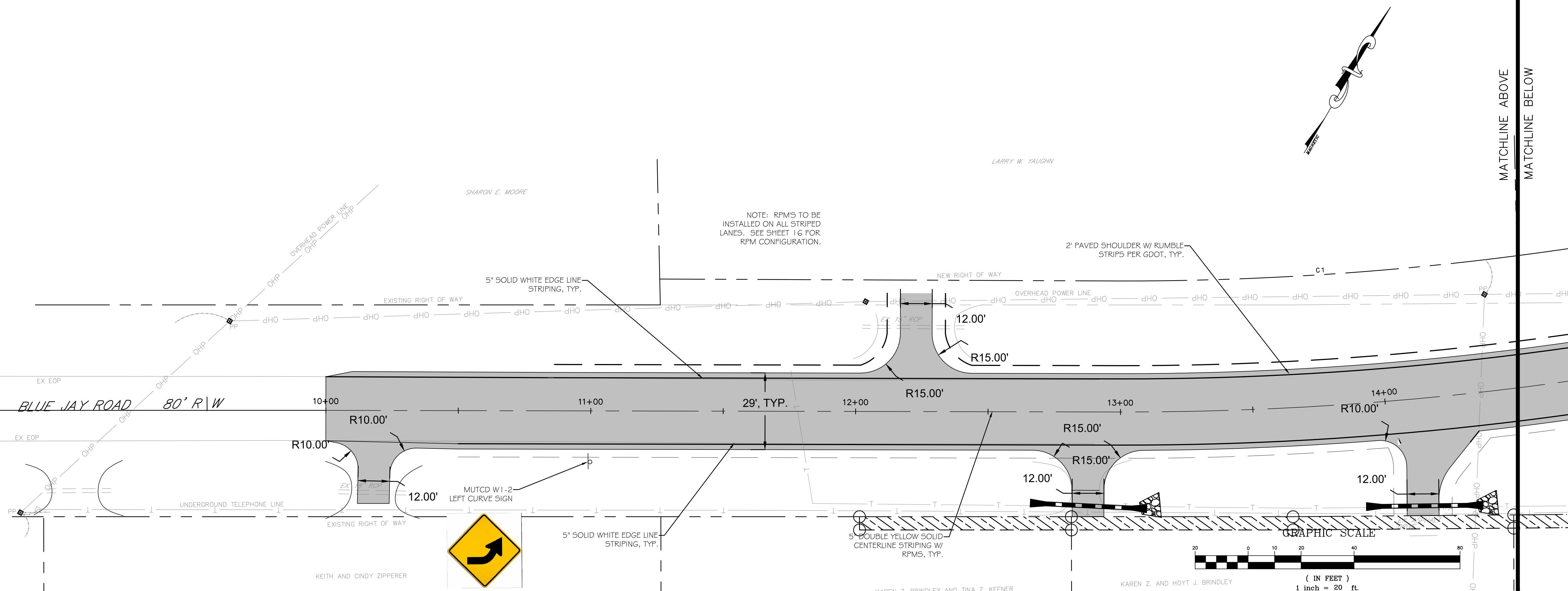
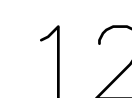
[illegible]

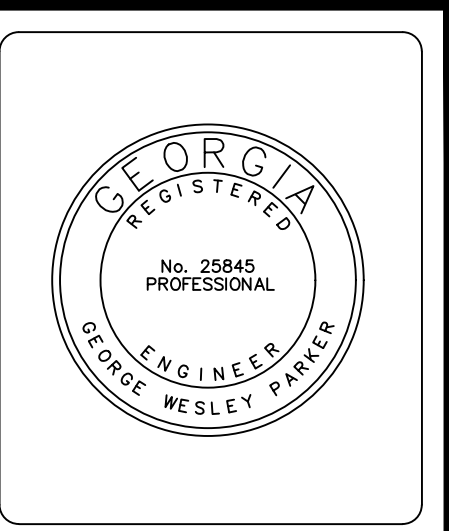
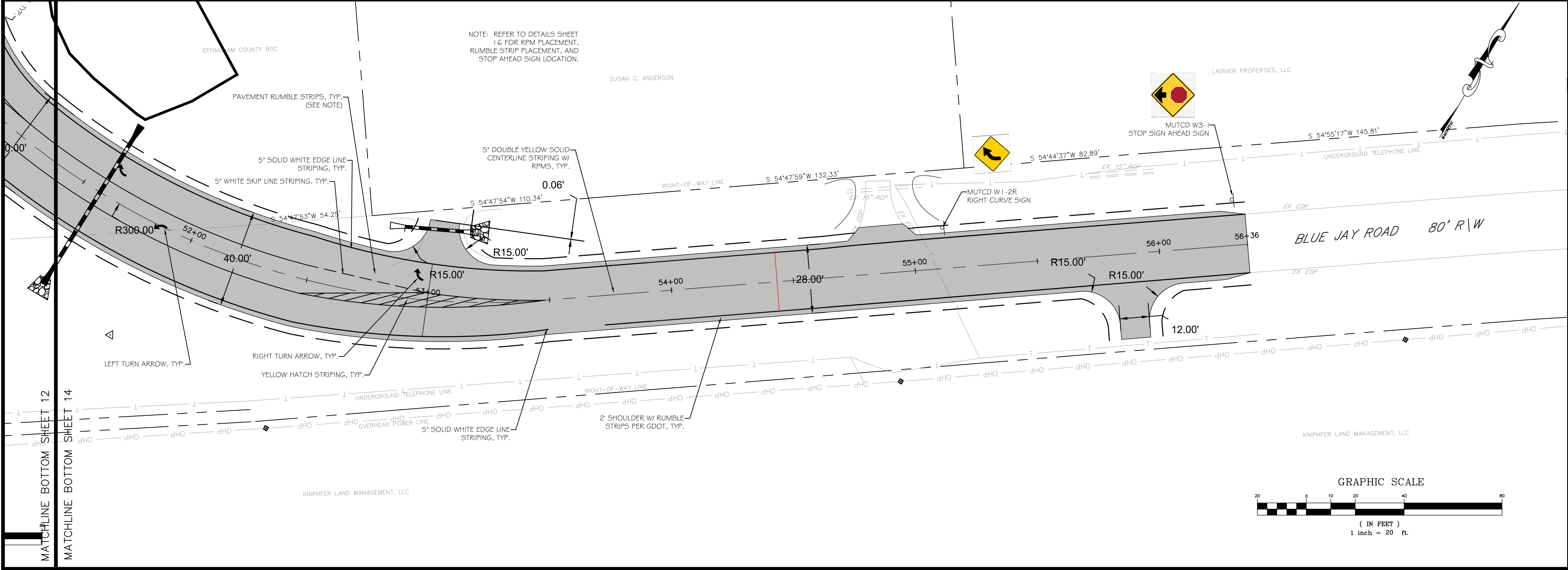
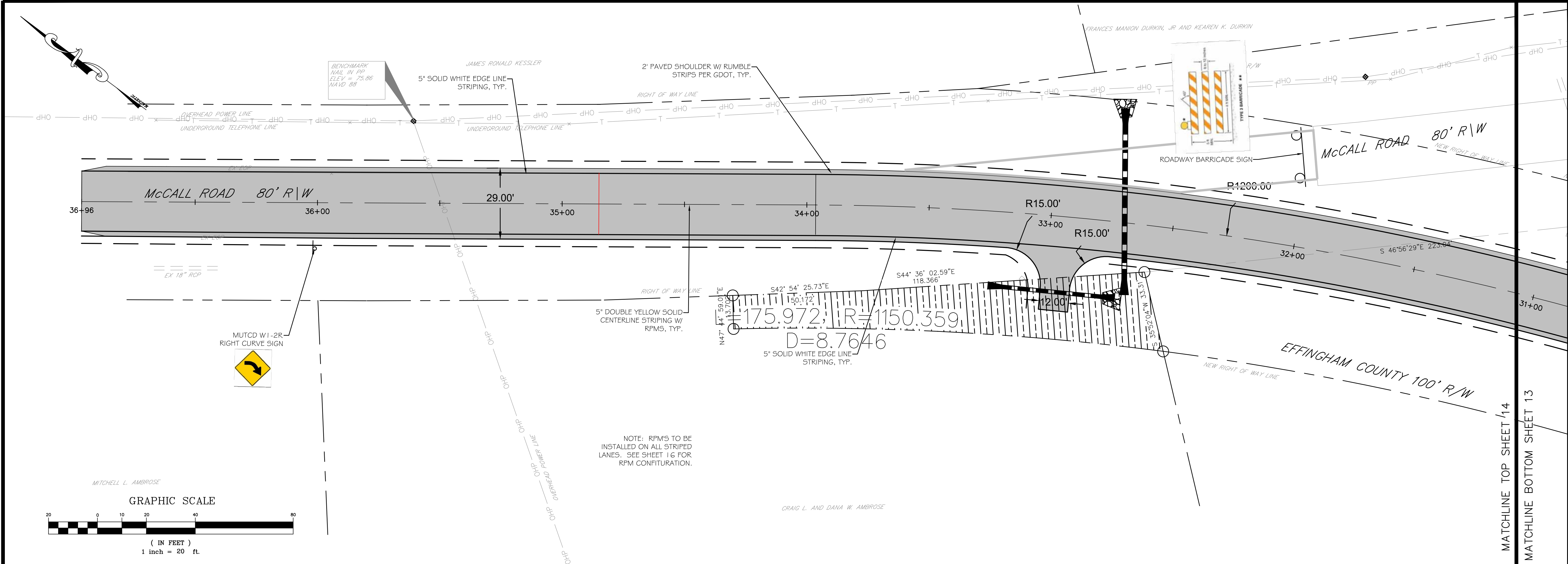
Sheet Title:

SIGNAGE AND
STRIPING PLAN

Drawn by:	WAS
Designed by:	WAS
Checked by:	GWF
Scale:	1"=20'
Project No.	

PE1819C





36 Courtland Street, Suite B
Statesboro, Georgia 30458
Phone: 912-764-7722



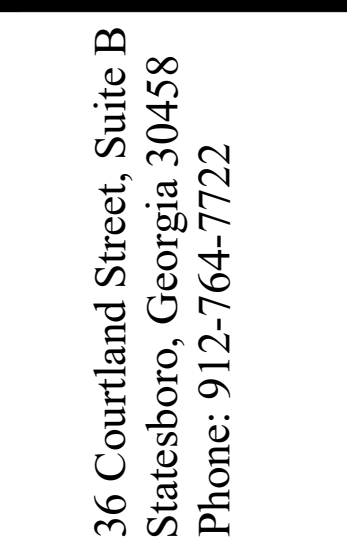
**BLUE JAY/MCCALL ROAD
INTERSECTION IMPROVEMENTS
EFFINGHAM COUNTY, GA**
prepared for:
EFFINGHAM COUNTY BOC

No.	Date	Revision

Sheet Title:
SIGNAGE AND STRIPING PLAN

Drawn by: **WAS**
Designed by: **WAS**
Checked by: **GWP**
Scale: **1" = 20'**
Project No.: **PE18190**

14



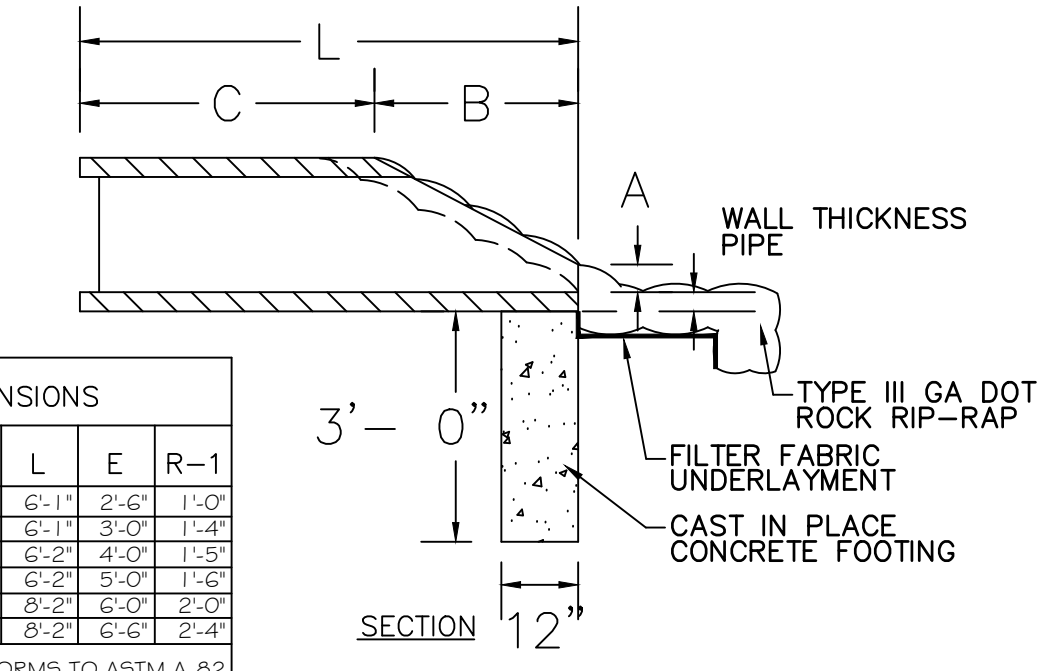
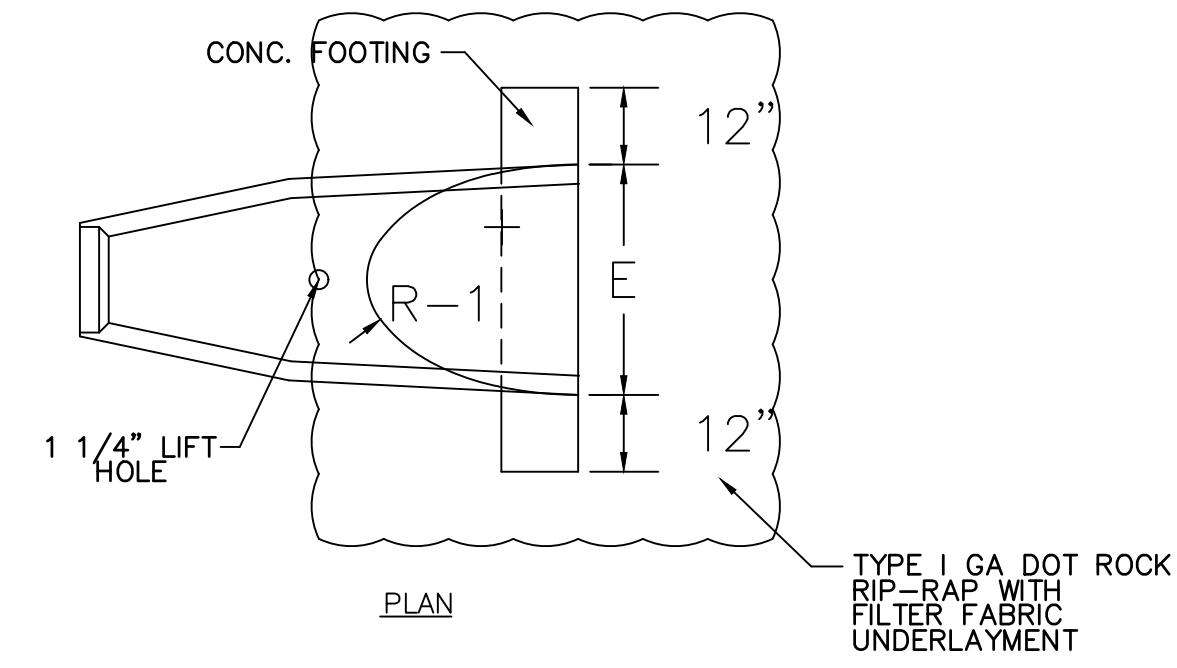
**BLUE JAY/MCCALL ROAD
INTERSECTION IMPROVEMENTS
EFFINGHAM COUNTY, GA**
prepared for:
EFFINGHAM COUNTY BOC

[illegible]

Sheet Title:

CONSTRUCTION
DETAILS

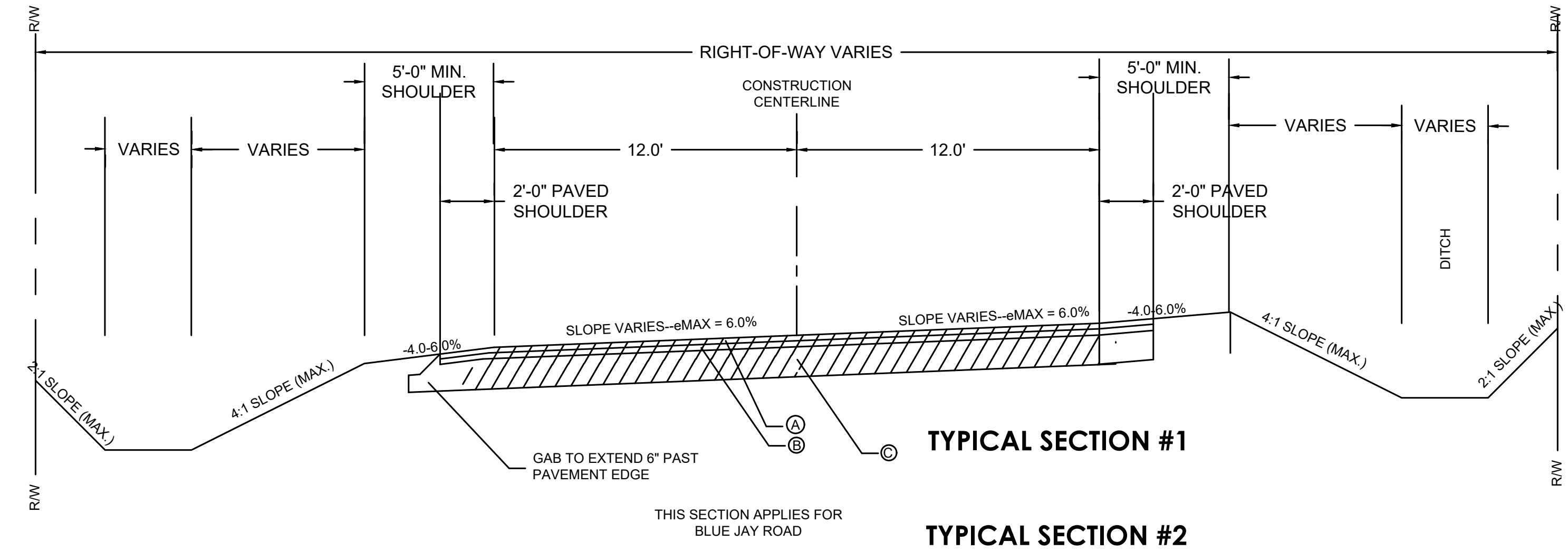
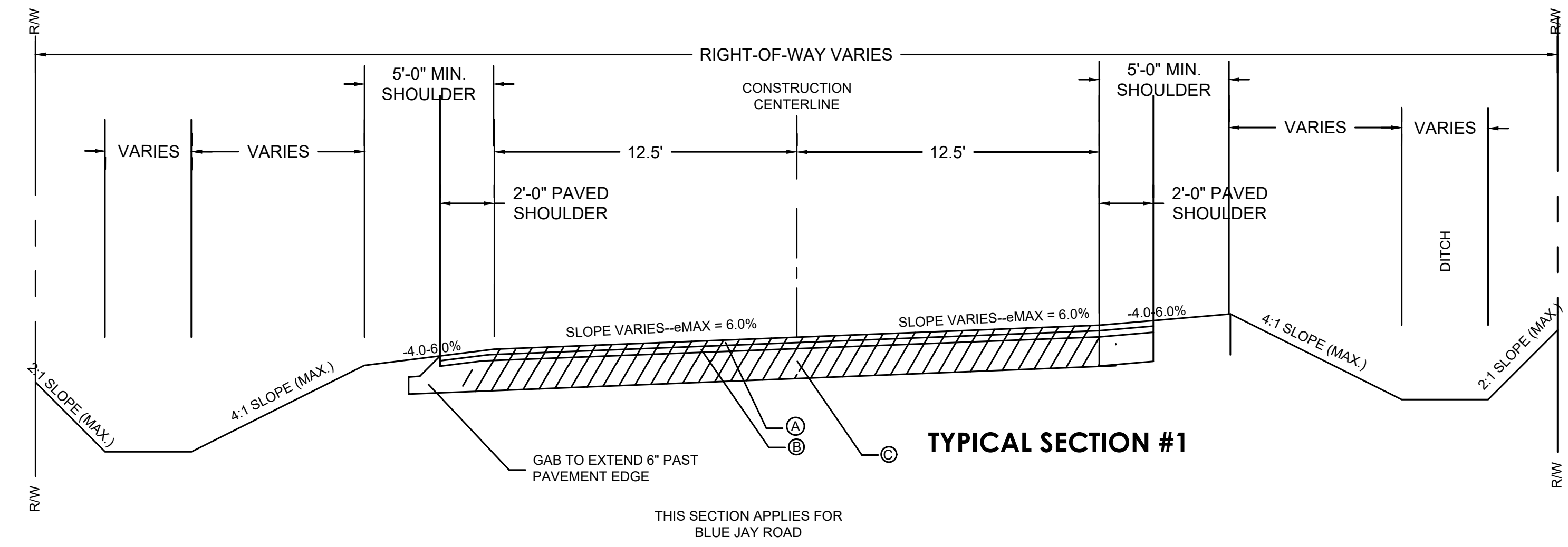
Drawn by:	WAS	Sheet 15
Designed by:	WAS	
Checked by:	GWP	
Scale:	NTS	
Project No.	PE18190	



FLARE DIMENSIONS						
PIPE DIA.	A	B	C	L	E	R—
15"	6"	2'-3"	3'-10"	6'-11"	2'-6"	1'-0"
18"	9"	2'-3"	3'-10"	6'-11"	3'-0"	1'-0"
24"	10"	3'-8"	2'-6"	6'-2"	4'-0"	1'-4"
30"	12"	4'-6"	1'-8"	6'-2"	5'-0"	1'-4"
36"	16"	5'-3"	2'-11"	8'-2"	6'-0"	2'-0"
42"	21"	5'-3"	2'-11"	8'-2"	6'-6"	2'-0"

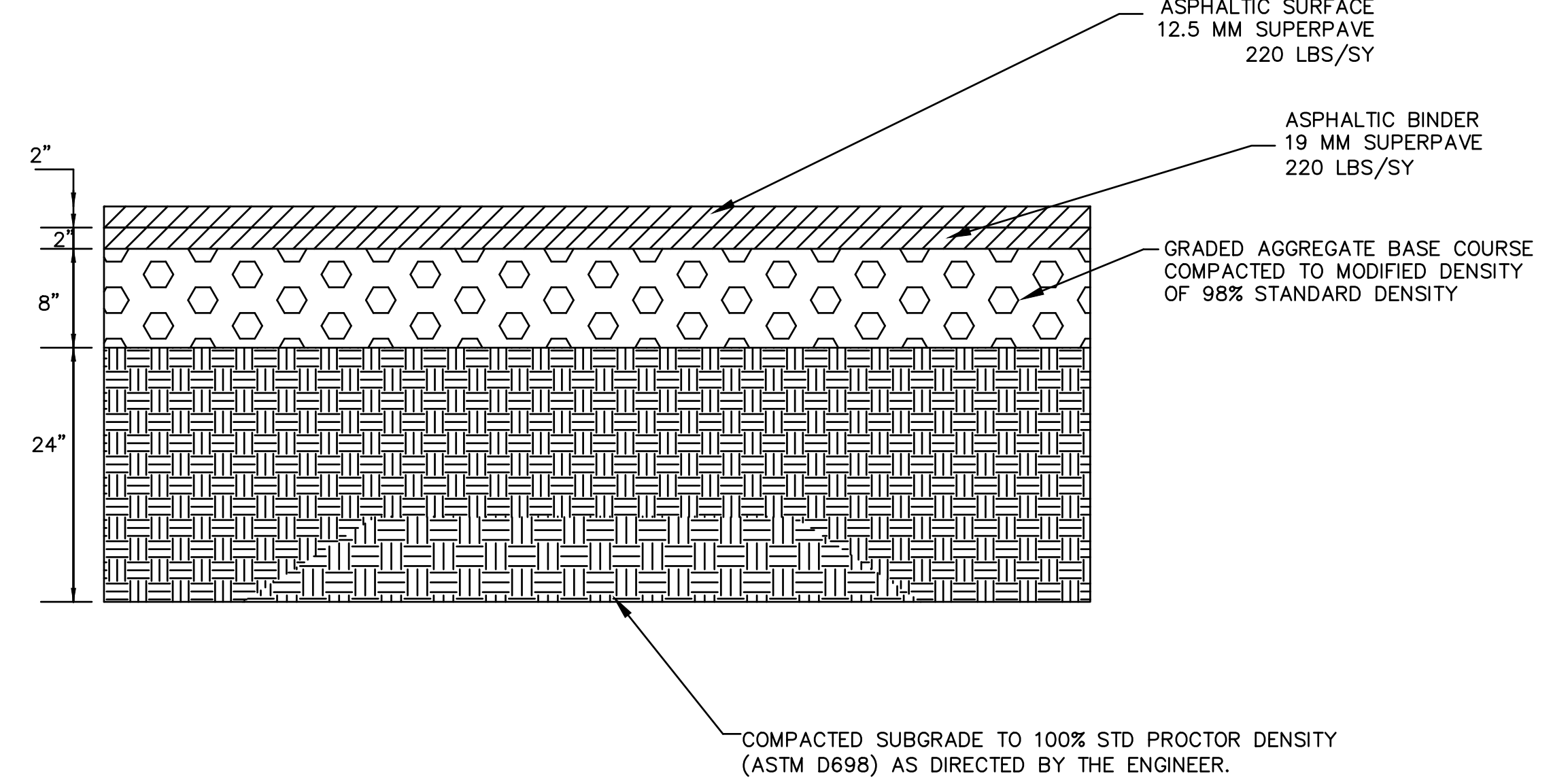
REINFORCEMENT CONFORMS TO ASTM A-8

STANDARD CONSTRUCTION DETAILS
FLARED END SECTION
NTS



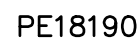
A	220 LBS./SQ.YD. RECYCLED ASPH. CONC. 12.5 MM SUPERPAVE GP 2 ONLY, INCL BITUM MATL & H LIME
B	220 LBS./SQ.YD. RECYCLED ASPH. CONC. 19 MM SUPERPAVE GP 1 OR 2, INCL BITUM MATL & H LIME
C	8" GAB, INCL MATL

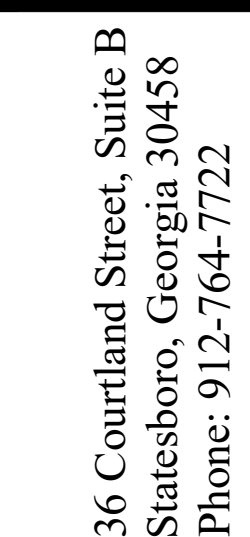
NOTE: CONTRACTOR TO ADD TACK BETWEEN LAYERS



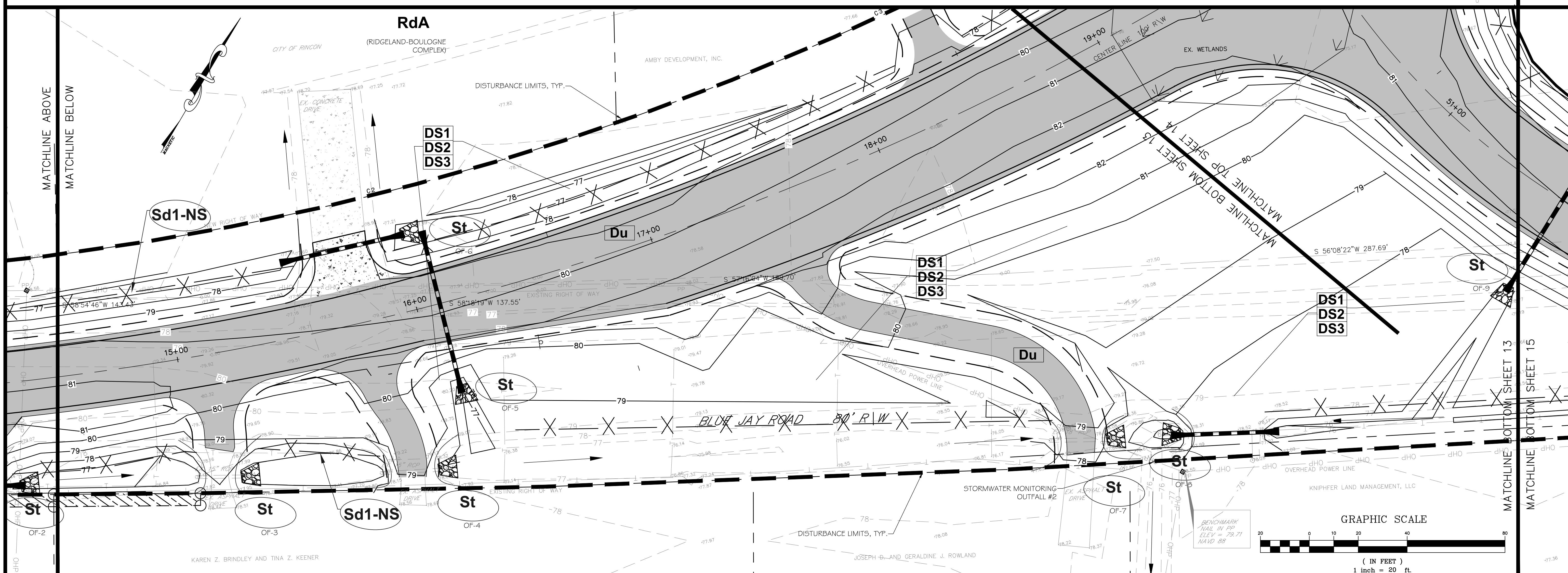
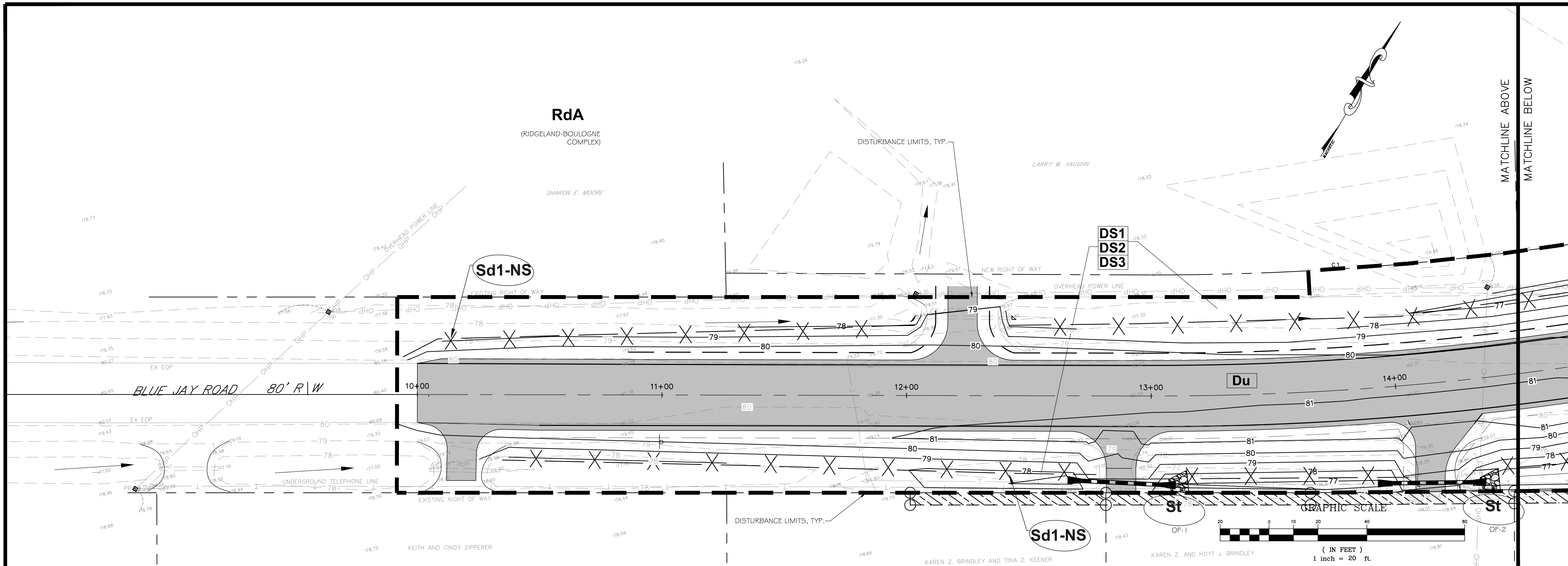
ASPHALT DETAIL

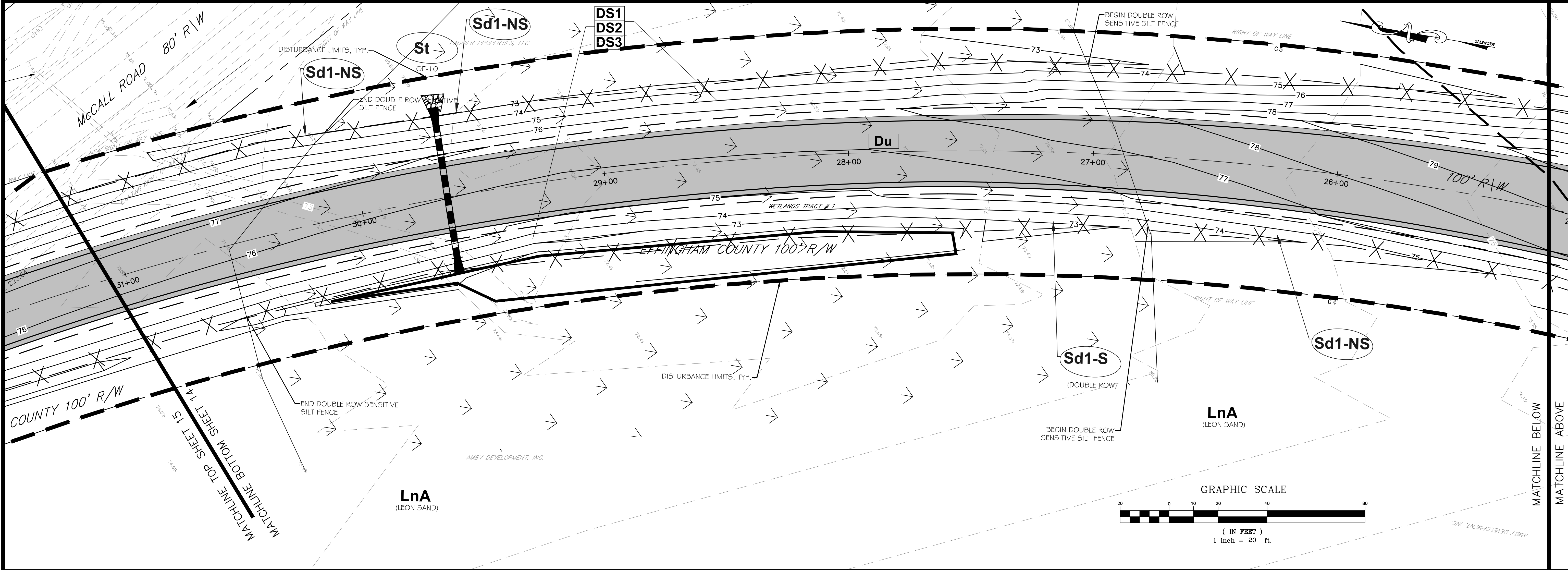
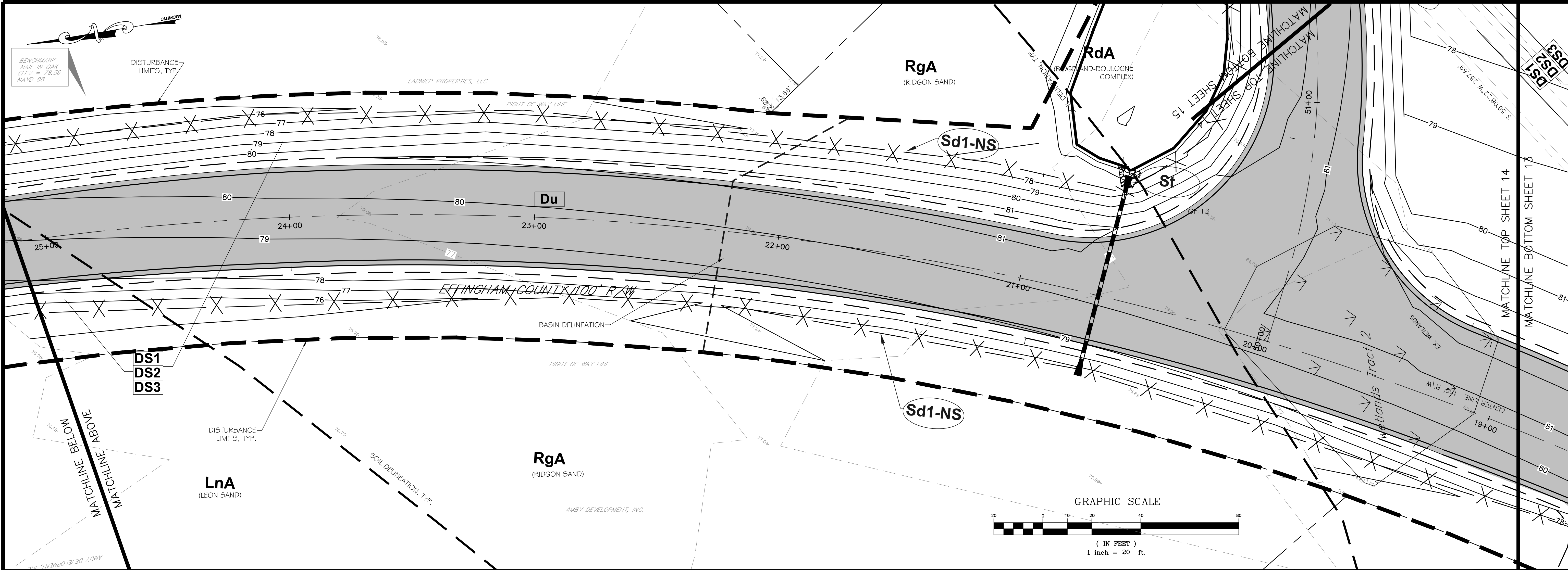
NTS





**BLUE JAY/MCCALL ROAD
INTERSECTION IMPROVEMENTS
EFFINGHAM COUNTY, GA
prepared for:
EFFINGHAM COUNTY BOC**

[illegible]



36 Courtland Street, Suite B
Statesboro, Georgia 30458
Phone: 912-764-7722



**BLUE JAY/MCCALL ROAD
INTERSECTION IMPROVEMENTS
EFFINGHAM COUNTY, GA**
prepared for:
EFFINGHAM COUNTY BOC

No.	Date	Revision

Sheet Title:
**EROSION CONTROL
PLAN**

Drawn by: WAS
Designed by: WAS
Checked by: GWP
Scale: 1" = 20'
Project No.: PE18190

- 20

47. SEE INITIAL EROSION CONTROL PLAN FOR THE SOIL SERIES (NAME AND ABBREVIATION) LOCATED ON PROJECT SITE.
48. SEE ALL EROSION CONTROL PLANS FOR THE LIMITS OF DISTURBANCE.

49.	SEDIMENT CALCULATIONS		
DISTURBED ACREAGE	7.94 AC.		
REQD. STORAGE PER ACRE	67 CY		
REQD. STORAGE	532 CY	(67 CY/AC. * 7.94 AC.)	
PROVIDED STORAGE	590 CY	TO BE STORED IN SILT FENCE	

30" SILT FENCE CALC: 6374 LF SILT FENCE (4' WIDE/1.25' OR 50% CLEANOUT HEIGHT: 590 CY STORAGE > 532 CY)

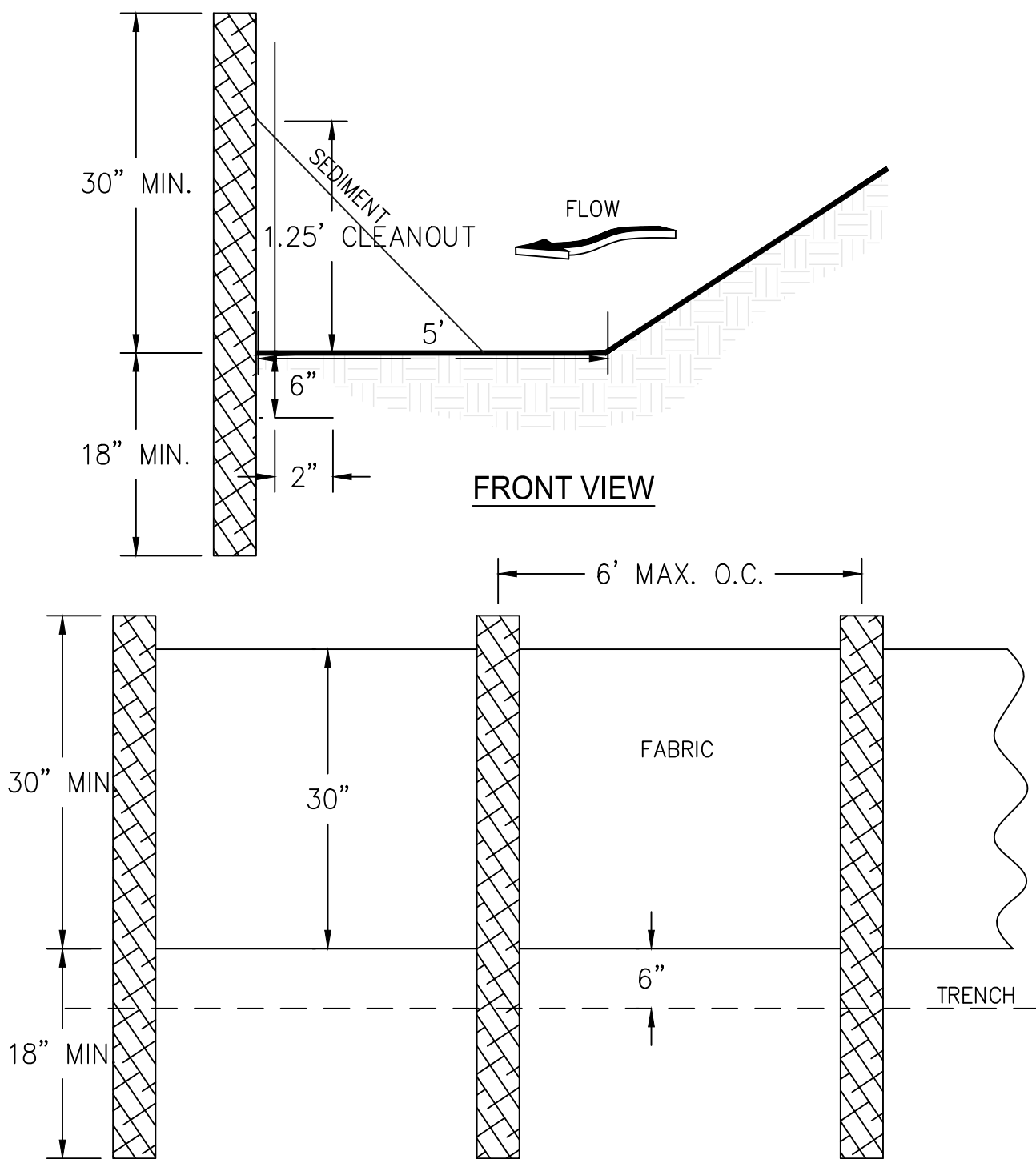
STRUCTURAL PRACTICES

CODE	PRACTICE	DETAIL	MAP SYMBOL	DESCRIPTION
Co	CONSTRUCTION EXIT			A crushed stone pad located at the construction site exit to provide a place for removing mud from tires thereby protecting public streets.
Sd1	SEDIMENT BARRIER			A barrier to prevent sediment from leaving the construction site. It may be sandbags, bales of straw or hay, brush, logs and poles, gravel, or a silt fence.
St	STORMDRAIN OUTLET PROTECTION			A paved or short section of riprap channel at the outlet of a storm drain system preventing erosion from the concentrated runoff.

VEGETATIVE PRACTICES

CODE	PRACTICE	DETAIL	MAP SYMBOL	DESCRIPTION
Ds1	DISTURBED AREA STABILIZATION (WITH MULCHING ONLY)			Establishing temporary protection for disturbed areas where seedlings may not have a suitable growing season to produce an erosion retarding cover.
Ds2	DISTURBED AREA STABILIZATION (WITH TEMP SEEDING)			Establishing a temporary vegetative cover with fast growing seedlings on disturbed areas.
Ds3	DISTURBED AREA STABILIZATION (WITH PERM SEEDING)			Establishing a permanent vegetative cover such as trees, shrubs, vines, grasses, or legumes on disturbed areas.
Du	DUST CONTROL ON DISTURBED AREAS			Controlling surface and air movement of dust on construction site, roadways and similar sites.
Ss	SLOPE STABILIZATION			A protective covering used to prevent erosion and establish temporary or permanent vegetation on steep slopes, shore lines, or channels.

51. SEE THIS SHEET FOR DETAILED DRAWINGS FOR ALL STRUCTURAL PRACTICES.



NOTES:
1. USE STEEL OR WOOD POSTS OR AS SPECIFIED BY THE EROSION, SEDIMENTATION, AND POLLUTION CONTROL PLAN.

Sd-1NS
SILT FENCE TYPE NON-SENSITIVE
NTS

52. VEGETATIVE PLAN FOR DISTURBED AREAS

All bare areas resulting from construction operations will established to perennial vegetation as soon as possible after final grading is complete.

SEEDBED

Prepare seedbed to a depth of at least 4 inches on all areas where a good seedbed is not present. Remove rocks, roots, or other objects that will interfere with vegetation establishment or maintenance operations.

FERTILIZER

Apply agricultural lime at the rate of 1 tons per acre. Apply 1000 lbs. 15–15–15 fertilizer per acre. Spread lime and fertilizer uniformly over all areas immediately before final land preparation and mix thoroughly with the soil. Apply topdressing of 100 lbs. per acre of ammonium nitrate (or equivalent) when plants are 2 to 4 inches tall.

PLANTING

All areas shall be seed with the following:

SEPTEMBER–MARCH

Rye (Temporary Grassing)/Bermuda Mixture (Permanent Grassing)

Rye @ 1/2 bushel (3.9 lbs.) per 1000 sqft

Unhulled Bermuda @ 0.22 lbs. per 1000 sqft

MARCH–SEPTEMBER

Browntop Millet (Temporary Grassing)/Bermuda Mixture (Permanent Grassing)

Browntop Millet @ 10 lbs. per acre

Hulled Bermuda @ 10 lbs. per acre

MULCHING

2 Tons per acre of straw. Anchor mulch into ground. Mulch shall be approximately 1–2 inches thick.

MAINTENANCE

Apply 400 lbs. per acre or 10–10–10 fertilizer and topdress with 30 lbs. of ammonium nitrate per acre every year. Apply 1 ton of lime per 5 years.

PROVIDE VEGETATION AND MULCHING TO ALL DISTURBED AREAS IMMEDIATELY AFTER GRADING. LAND CLEARING SHALL BE KEPT TO A MINIMUM AND SHALL BE ACCOMPLISHED IN A WAY TO MINIMIZE EROSION. SCHEDULE LAND DISTURBING ACTIVITIES WITH REGARD TO WEATHER FORECAST TO LIMIT EXPOSURE OF UNPROTECTED LAND FROM WIND, RAIN AND OTHER EROSION FORCES.

GENERAL EROSION CONTROL NOTES

THIS SITE IS NOT LOCATED WITHIN A FLOOD ZONE.

IT SHALL BE THE CONTRACTOR'S RESPONSIBILITY TO PROVIDE EROSION CONTROL FOR ALL DRAINAGE PATTERNS CREATED AT ALL STAGES OF CONSTRUCTION.

CONSTRUCTION OR LAND CLEARING SHALL BEGIN WITH THE INSTALLATION OF EROSION CONTROL MEASURES.

SEDIMENT CONTROL WILL BE ACHIEVED BY USE OF SILT FENCE AND CHECK DAMS. REMOVE ACCUMULATED SILT FROM SILT FENCE AND CHECK DAMS WHEN THEY REACH 1.5' IN DEPTH.

CONTRACTOR SHALL INSPECT EROSION CONTROL MEASURES DAILY AND AFTER ALL RAIN EVENTS. ANY DAMAGES SHOULD BE REPAIRED BY THE END OF THE DAY. SEDIMENT DISPOSAL SHALL BE ACCOMPLISHED BY SPREADING EVENLY OVER THE SITE. SEDIMENT FENCES SHALL REMAIN UNTIL THE AREA IS STABILIZED.

EROSION CONTROL MEASURES IN THE PLAN ARE THE MINIMUM REQUIRED. THE CONTRACTOR SHALL PROVIDE ADDITIONAL CONTROL MEASURES AS DETERMINED BY ACTUAL FIELD CONDITIONS.

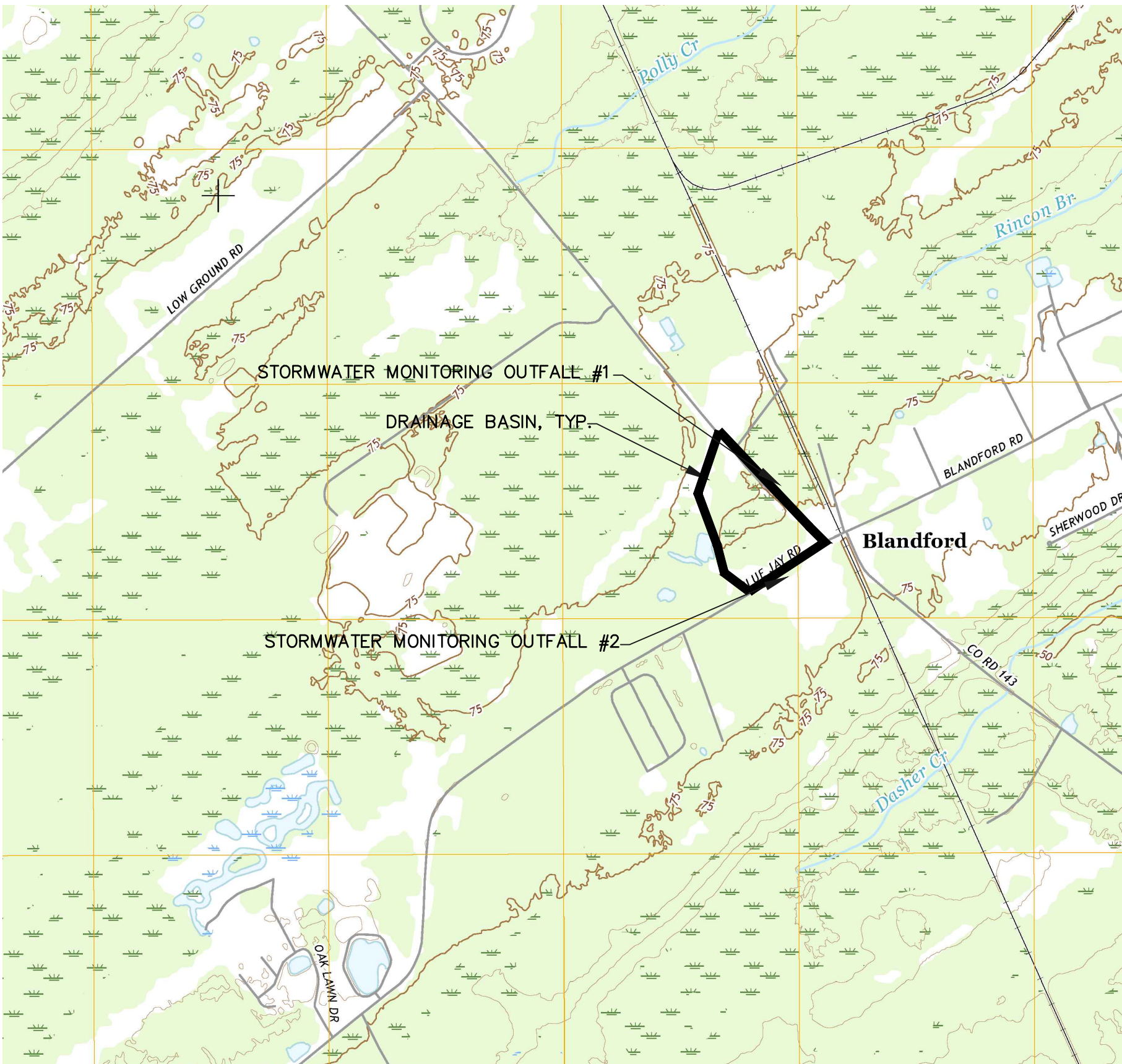
ALL RIP–RAP SHALL BE INSTALLED FLUSH WITH CHANNEL BANKS AND BOTTOM.

SPILL CONTINGENCY PLAN

- A. CONTAIN THE SPILL
B. STOP THE SOURCE
C. CLEANUP PROCEDURES SHALL BE CLEARLY POSTED
D. CLEANUP MATERIALS SHALL BE READILY AVAILABLE

NOTES REGARDING CRITICAL WORK ZONE

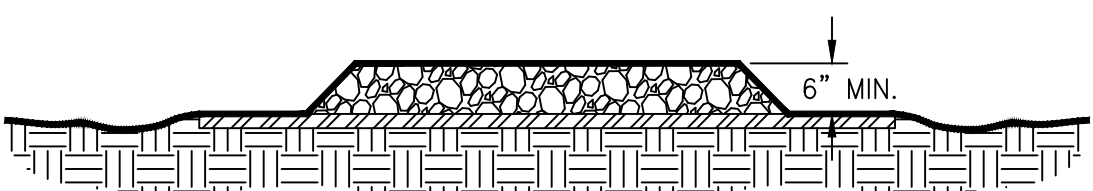
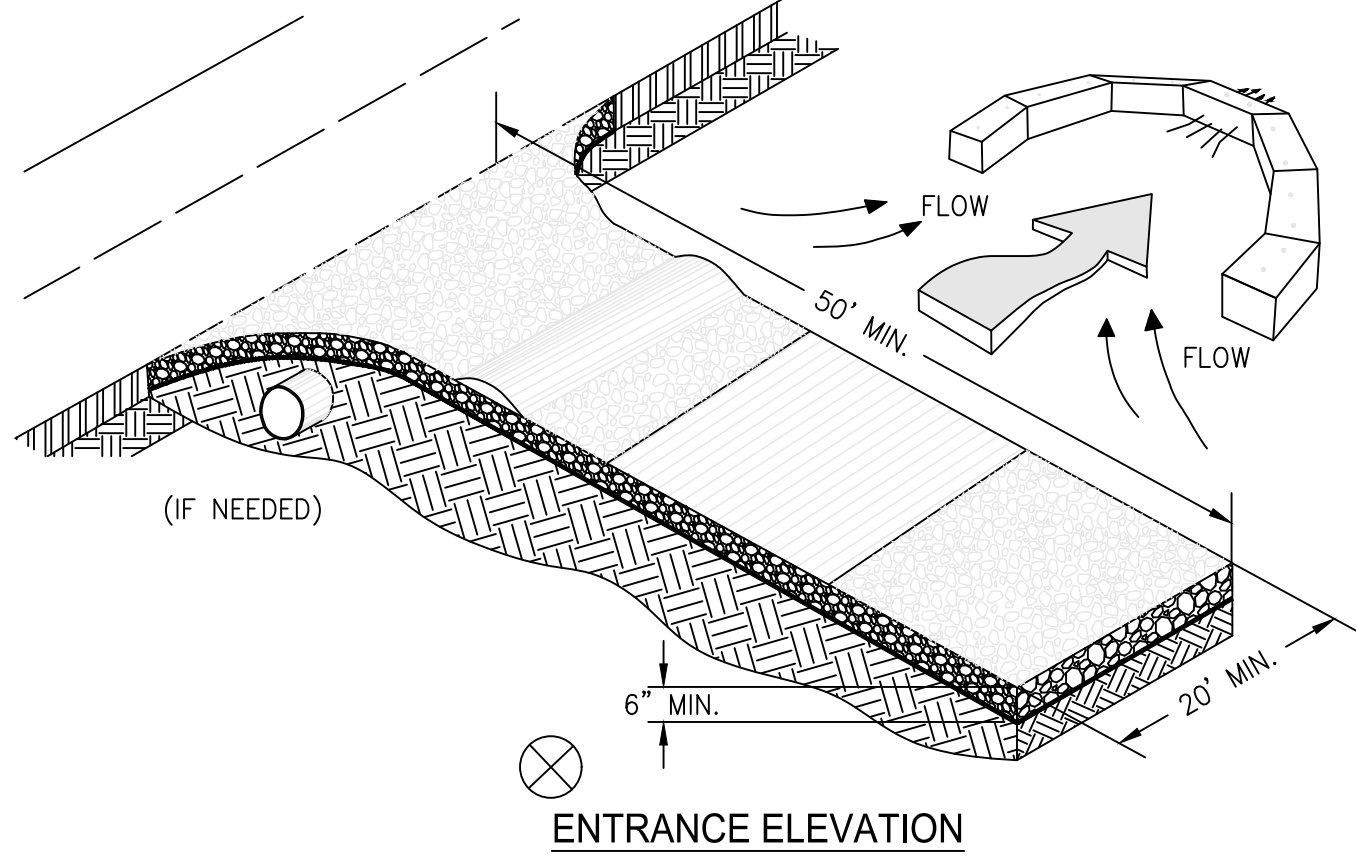
AT THE END OF EACH WORK DAY ALL SLOPES 2:1 OR STEEPER AND HIGHER THAN 5 FEET SHALL RECEIVE SURFACE ROUGHENING, POLYMERS, AND EROSION CONTROL MATTING. ADDITIONALLY, ALL FILL SLOPES SHALL RECEIVE A DIVERSION DIKE AND TEMPORARY DOWN DRAINS ALONG THE TOP OF THE SLOPE PREVENTING DRAINAGE SPILLING OVER THE EDGE AND DOWN THE FACE OF THE SLOPE. THE TEMPORARY DOWN DRAINS SHALL BE CONSTRUCTED WITH PERFORATED STAND PIPES AT THE TOP OF THE SLOPE AND RECONSTRUCTED EACH DAY AS THE SLOPE INCREASES IN HEIGHT.



QUADRANGLE MAP--N.T.S.

CRUSHED STONE CONSTRUCTION EXIT

EXIT DIAGRAM

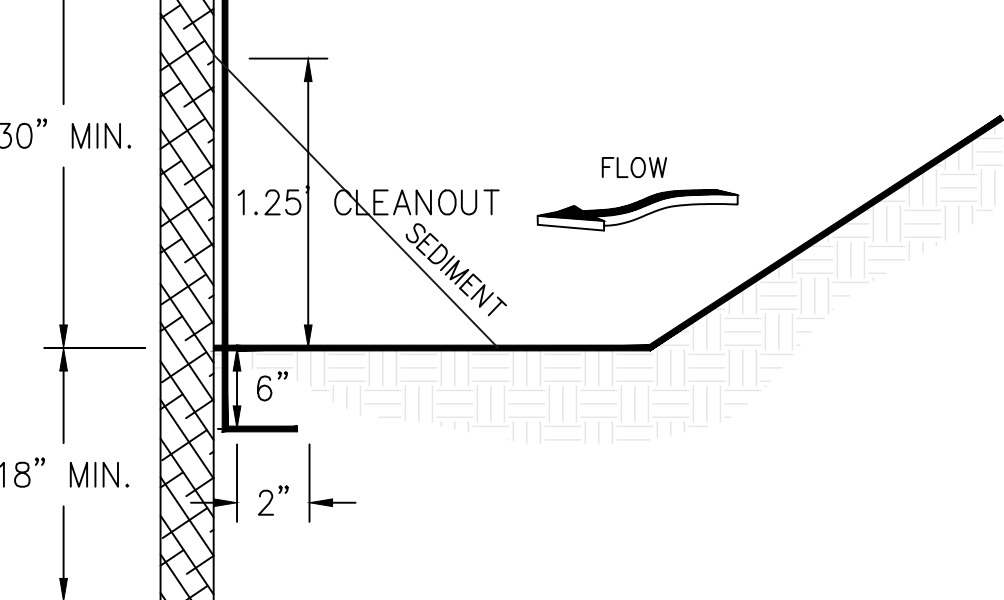


NOTES:

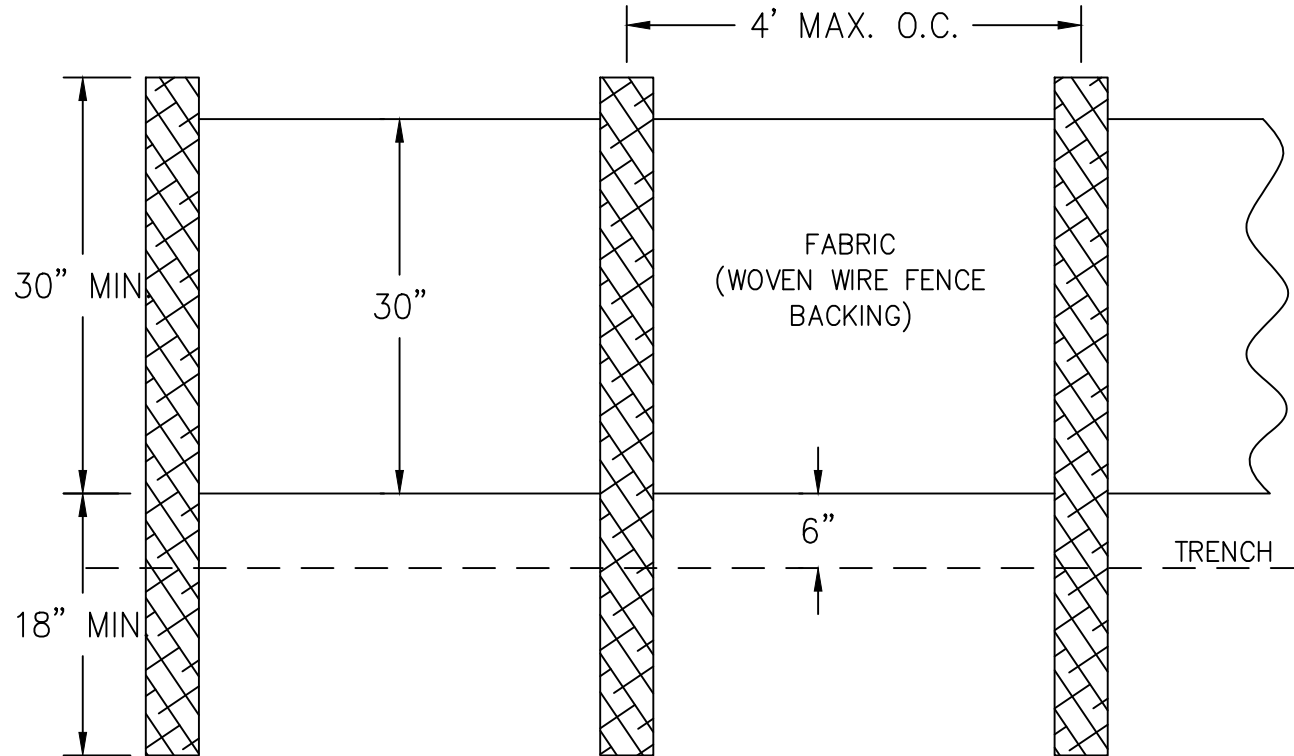
1. AVOID LOCATING ON STEEP SLOPES OR AT CURVES ON PUBLIC ROADS.
2. REMOVE ALL VEGETATION AND OTHER UNSUITABLE MATERIAL FROM THE FOUNDATION AREA, GRADE, AND CROWN FOR POSITIVE DRAINAGE.
3. AGGREGATE SIZE SHALL BE IN ACCORDANCE WITH NATIONAL STONE ASSOCIATION R–2 (1.5"–3.5" STONE).
4. GRAVEL PAD SHALL HAVE A MINIMUM THICKNESS OF 6".
5. PAD WIDTH SHALL BE EQUAL FULL WIDTH AT ALL POINTS OF VEHICULAR EGRESS, BUT NO LESS THAN 20'.
6. A DIVERSION RIDGE SHOULD BE CONSTRUCTED WHEN GRADE TOWARD PAVED AREA IS GREATER THAN 2%.
7. INSTALL PIPE UNDER THE ENTRANCE IF NEEDED TO MAINTAIN DRAINAGE DITCHES.
8. WHEN WASHING IS REQUIRED, IT SHOULD BE DONE ON AN AREA STABILIZED WITH CRUSHED STONE THAT DRAINS INTO AN APPROVED SEDIMENT TRAP OR SEDIMENT BASIN (DIVERT ALL SURFACE RUNOFF AND DRAINAGE FROM THE ENTRANCE TO A SEDIMENT CONTROL DEVICE).
9. WASHRACKS AND/OR TIRE WASHERS MAY BE REQUIRED DEPENDING ON SCALE AND CIRCUMSTANCE. IF NECESSARY, WASHRACK DESIGN MAY CONSIST OF ANY MATERIAL SUITABLE FOR TRUCK TRAFFIC THAT REMOVE MUD AND DIRT.
10. MAINTAIN AREA IN A WAY THAT PREVENTS TRACKING AND/OR FLOW OF MUD ONTO PUBLIC RIGHTS–OF–WAYS. THIS MAY REQUIRE TOP DRESSING, REPAIR AND/OR CLEANOUT OF ANY MEASURES USED TO TRAP SEDIMENT.

SILT FENCE - TYPE SENSITIVE

SIDE VIEW



FRONT VIEW



NOTES:

1. USE STEEL OR WOOD POSTS OR AS SPECIFIED BY THE EROSION, SEDIMENTATION, AND POLLUTION CONTROL PLAN.

GEORGE WESLEY PARKER

0000033463

LEVEL II CERTIFICATION NUMBER

05/04/2019

EXPIRES



36 Courtland Street, Suite B
Statesboro, Georgia 30458
Phone: 912-764-7722



**BLUE JAY/MCCALL ROAD
INTERSECTION IMPROVEMENTS
EFFINGHAM COUNTY, GA**
prepared for:
EFFINGHAM COUNTY BOC

No.	Date	Revision

Sheet Title:
**EROSION CONTROL
DETAILS**

Drawn by:	WAS	Sheet
Designed by:	WAS	
Checked by:	GWP	
Scale:	NTS	
Project No.	PE18190	

21

22

NOTE: ALL TEMPORARY SIGNAGE AND TRAFFIC CONTROL TO BE PROVIDED BY THE CONTRACTOR.

PHASE 1--FULL ROADWAY CONSTRUCTION
EXCEPT 12.5 MM ASPHALT SURFACE

PHASE 1C--MILLING AS REQUIRED
FOR TRANSITION TO EX. ROADWAY

— PHASE 1B—MILLING AS REQUIRED
FOR TRANSITION TO EX. ROADWAY



36 Courtland Street, Suite B
Statesboro, Georgia 30458
Phone: 912-764-7722



**BLUE JAY/MCCALL ROAD
INTERSECTION IMPROVEMENTS
EFFINGHAM COUNTY, GA**
prepared for:
EFFINGHAM COUNTY BOC

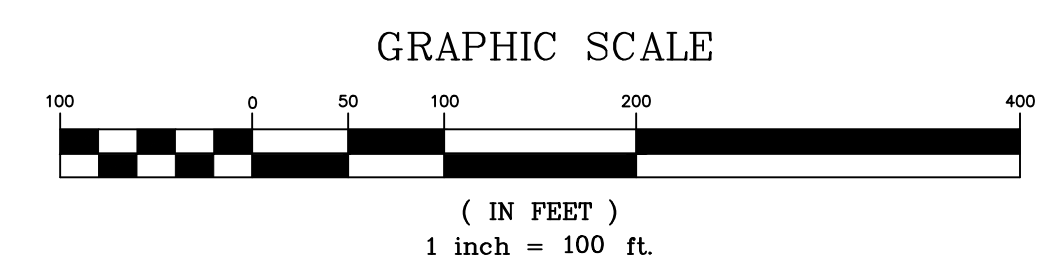
[illegible]

Sheet Title:

PHASING
PLAN #1

Drawn by:	WAS	Sheet
Designed by:	WAS	
Checked by:	GWP	
Scale:	1"=100'	
Project No.		

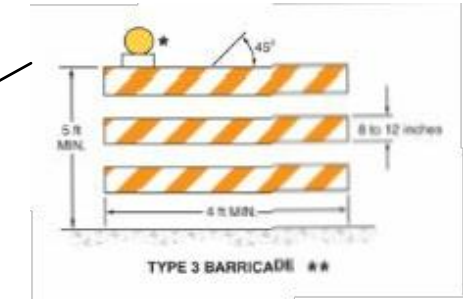
PE18190



NOTE: STORAGE LAYDOWN AREA(S) TO BE APPROVED BY COUNTY PRIOR TO CONSTRUCTION.

NOTE: ALL TEMPORARY SIGNAGE AND TRAFFIC CONTROL TO BE PROVIDED BY THE CONTRACTOR.

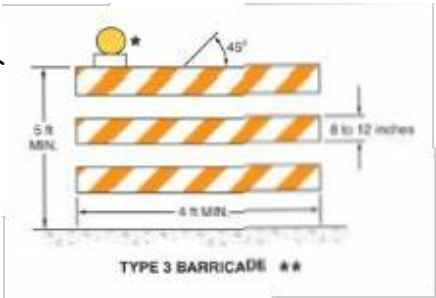
PHASE 2A--FULL DEPTH PAVEMENT FOR SOUTHBOUND LANE TO CONNECT NEW CORRIDOR. (EXCEPT FOR 12.5 MM SURFACE COURSE)



PHASE 2C--ROAD CLOSED.

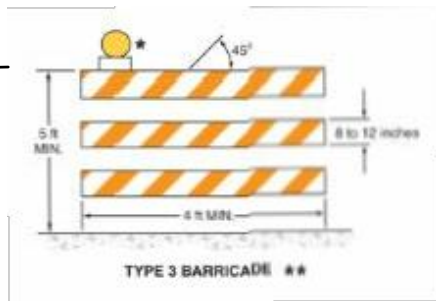
NOTE: FLAG MEN REQUIRED FOR PHASE 2A AND 2B.

PHASE 2B--FULL DEPTH PAVEMENT FOR WESTBOUND LANE TO CONNECT NEW CORRIDOR. (EXCEPT FOR 12.5 MM SURFACE COURSE)

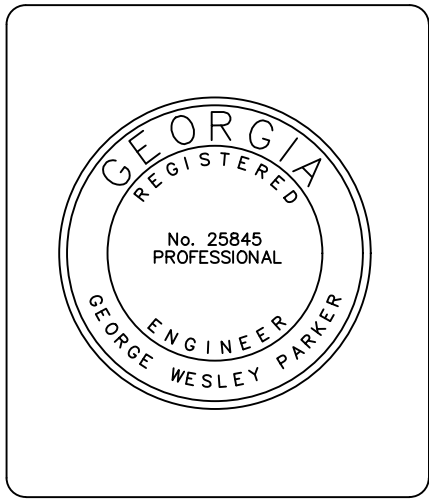
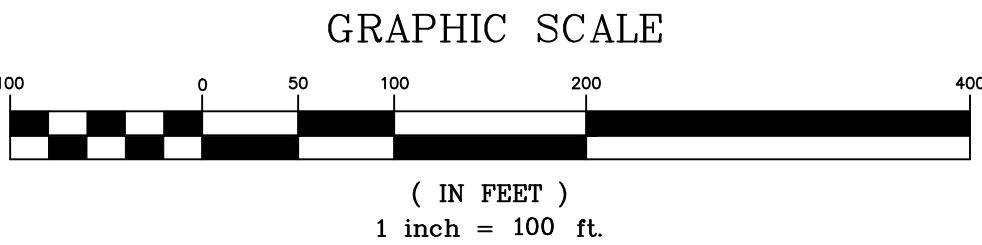


PHASE 2C--ROAD OPEN TO LOCAL TRAFFIC ONLY.

PHASE 2A--FULL DEPTH PAVEMENT FOR SOUTHBOUND LANE TO CONNECT NEW CORRIDOR. (EXCEPT FOR 12.5 MM SURFACE COURSE)



PHASE 2C--ROAD OPEN TO LOCAL TRAFFIC ONLY.



36 Courtland Street, Suite B
Statesboro, Georgia 30458
Phone: 912-764-7722



**BLUE JAY/MCCALL ROAD
INTERSECTION IMPROVEMENTS
EFFINGHAM COUNTY, GA**
prepared for:
EFFINGHAM COUNTY BOC

No.	Date	Revision

Sheet Title:
**PHASING
PLAN #2**

Drawn by: **WAS**
Designed by: **WAS**
Checked by: **GWP**
Scale: **1"=100'**
Project No.
PE18190

NOTE: STORAGE LAYDOWN AREA(S) TO BE APPROVED BY COUNTY PRIOR TO CONTRUCTION.

NOTE: ALL TEMPORARY SIGNAGE AND TRAFFIC CONTROL TO BE PROVIDED BY THE CONTRACTOR.

NOTE: FLAG MEN TO BE UTILIZED THROUGHOUT PHASE 3 CONSTRUCTION.

PHASE 3B--REMOVE EXISTING PAVEMENT AND
INSTALL FULL DEPTH PAVEMENT NORTH
BOUND LANE EXCEPT 12.5 MM SURFACE COURSE.

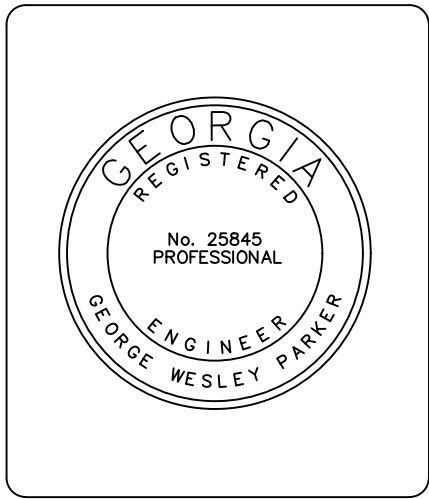
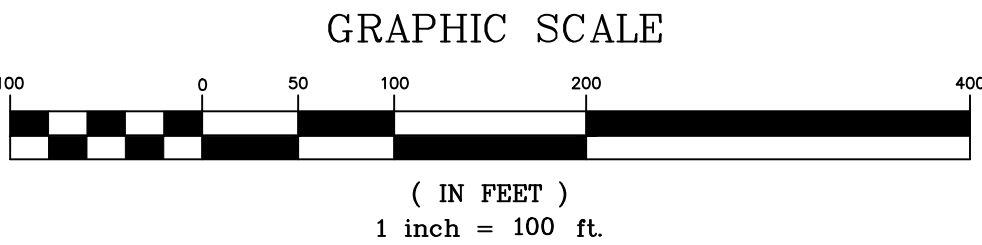
PHASE 3B--REMOVE EXISTING PAVEMENT AND
INSTALL FULL DEPTH PAVEMENT EAST
BOUND LANE EXCEPT 12.5 MM SURFACE COURSE.

PHASE 3C--INSTALL FULL DEPTH PAVEMENT ON REMAINING
DRIVES (EXCEPT 12.5 MM SURFACE COURSE)

PHASE 3A--REMOVE EXISTING PAVEMENT AND
CONNECT DRIVES TO NEWLY INSTALLED ROADWAY
(GAB BASE ONLY).

PHASE 3C--INSTALL CONCRETE DRIVE
PHASE 3B--INSTALL FULL DEPTH PAVEMENT
ON EASTBOUND LANE (EXCEPT 12.5 MM SURFACE COURSE)
AND ADD 19 MM SUPERPAVE TO CONNECTING DRIVES.

PHASE 3C--INSTALL FULL DEPTH PAVEMENT ON REMAINING
DRIVES (EXCEPT 12.5 MM SURFACE COURSE)



36 Courtland Street, Suite B
Statesboro, Georgia 30458
Phone: 912-764-7722



**BLUE JAY/MCCALL ROAD
INTERSECTION IMPROVEMENTS
EFFINGHAM COUNTY, GA**
prepared for:
EFFINGHAM COUNTY BOC

No.	Date	Revision

Sheet Title: PHASING PLAN #3	
Drawn by: WAS	Sheet
Designed by: WAS	25
Checked by: GWP	
Scale: 1"=100'	
Project No. PE18190	

NOTE: FLAG MEN TO BE UTILIZED THROUGHOUT PHASE 4 CONSTRUCTION.



36 Courtland Street, Suite B
Statesboro, Georgia 30458
Phone: 912-764-7722



**BLUE JAY/MCCALL ROAD
INTERSECTION IMPROVEMENTS
EFFINGHAM COUNTY, GA
prepared for:
EFFINGHAM COUNTY BOC**

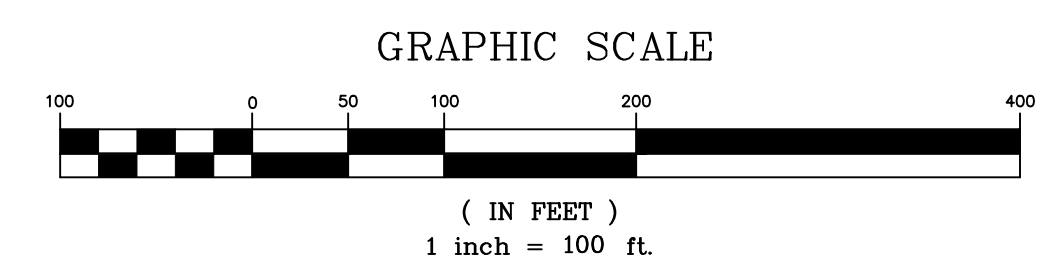
[illegible]

Sheet Title:

PHASING
PLAN #4

Drawn by:	WAS	Sheet
Designed by:	WAS	
Checked by:	GWP	
Scale:	1"=100'	
Project No.		

PE18190



26