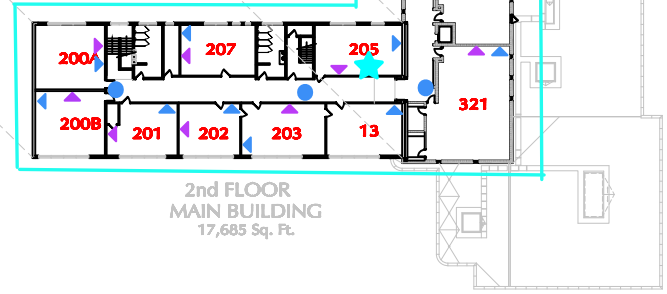
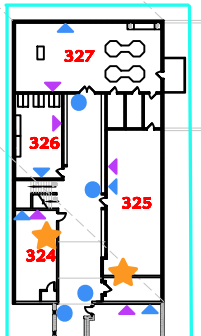
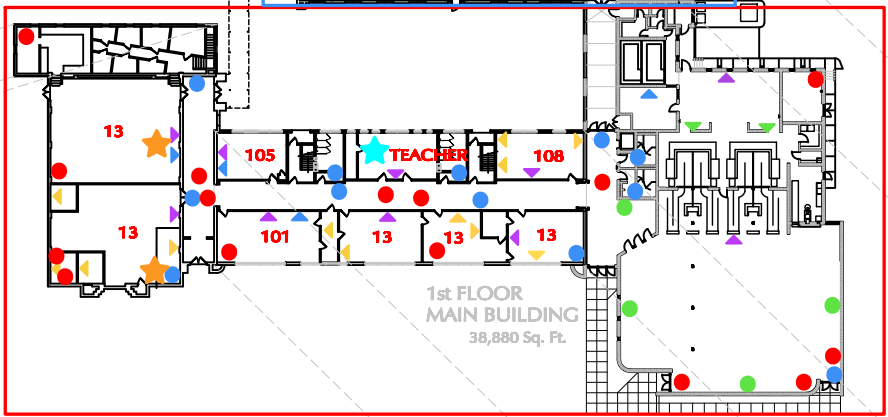
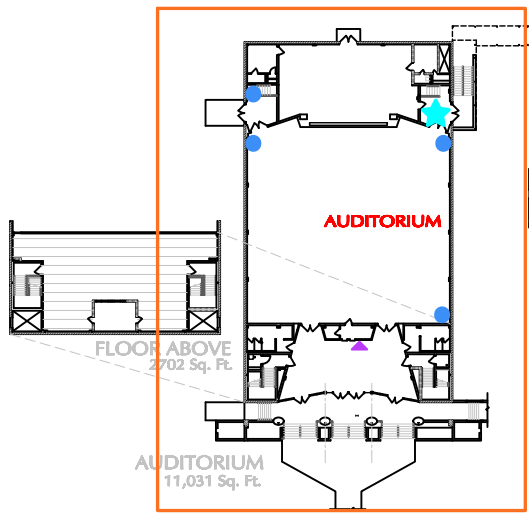
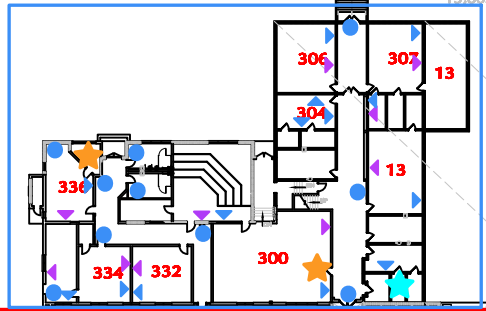
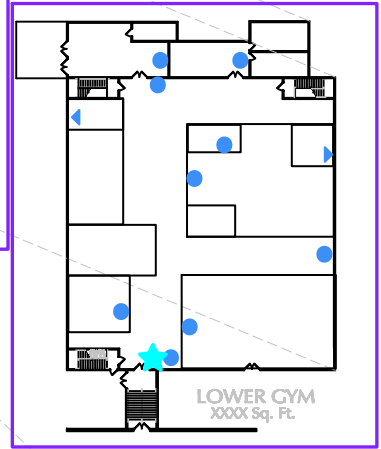
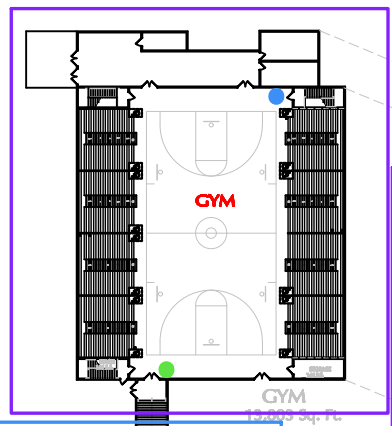
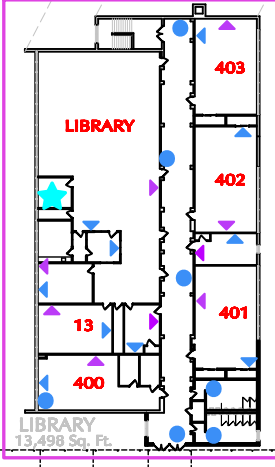
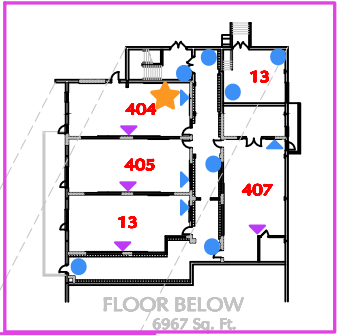
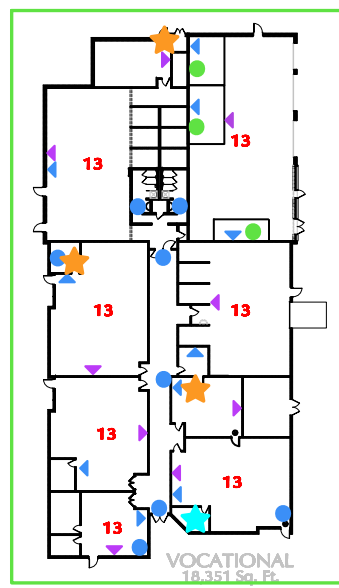


- ▶ 3 Drops. Speaker, Wireless, TV @ 88" AFF - 168
 - ▶ 2 Drops. Phone @ 48" AFF, Data @ 18" AFF - 112
 - ▶ 4 Drops. Data @ 18" AFF - 48
 - 2 Drops. Speaker, Wireless @ 88" AFF - 16
 - ▶ 2 Drops. Data @ 18" AFF - 4
 - 1 Drop. Speaker @ 88" AFF - 57
 - 1 Drop. Camera. Ceiling near existing camera- 15
- Total = 430

★ Fiber backbone
 ★ Copper backbone

All new cabling will be run to IDF/rack that has the fiber backbone running to it.

Of the Total drops
 400 bldg and cafe are plenum areas
 101 drops will be PLENUM and of those 15 drops will be cat6A plenum



OVERALL FLOOR PLANS @ TYNER HIGH SCHOOL 124,471 Sq. Ft.