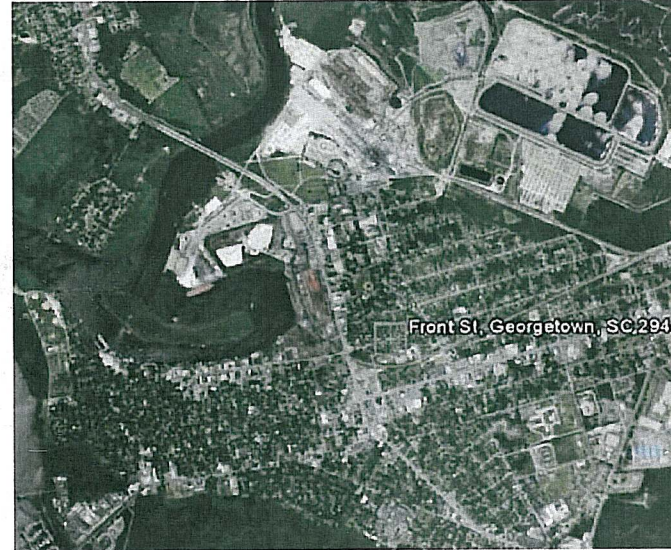
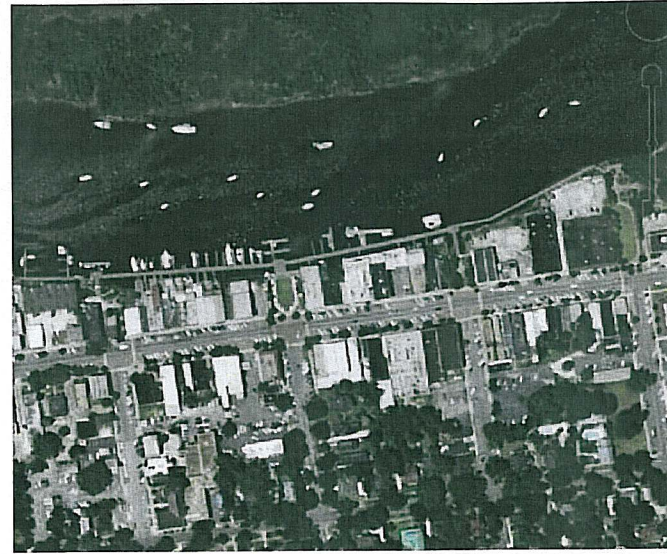


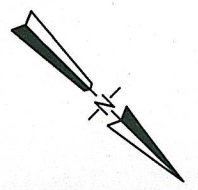
HARBORWALK REPAIRS  
 PROJECT # 1213  
 BID RELEASE DATE: 2-1-2019



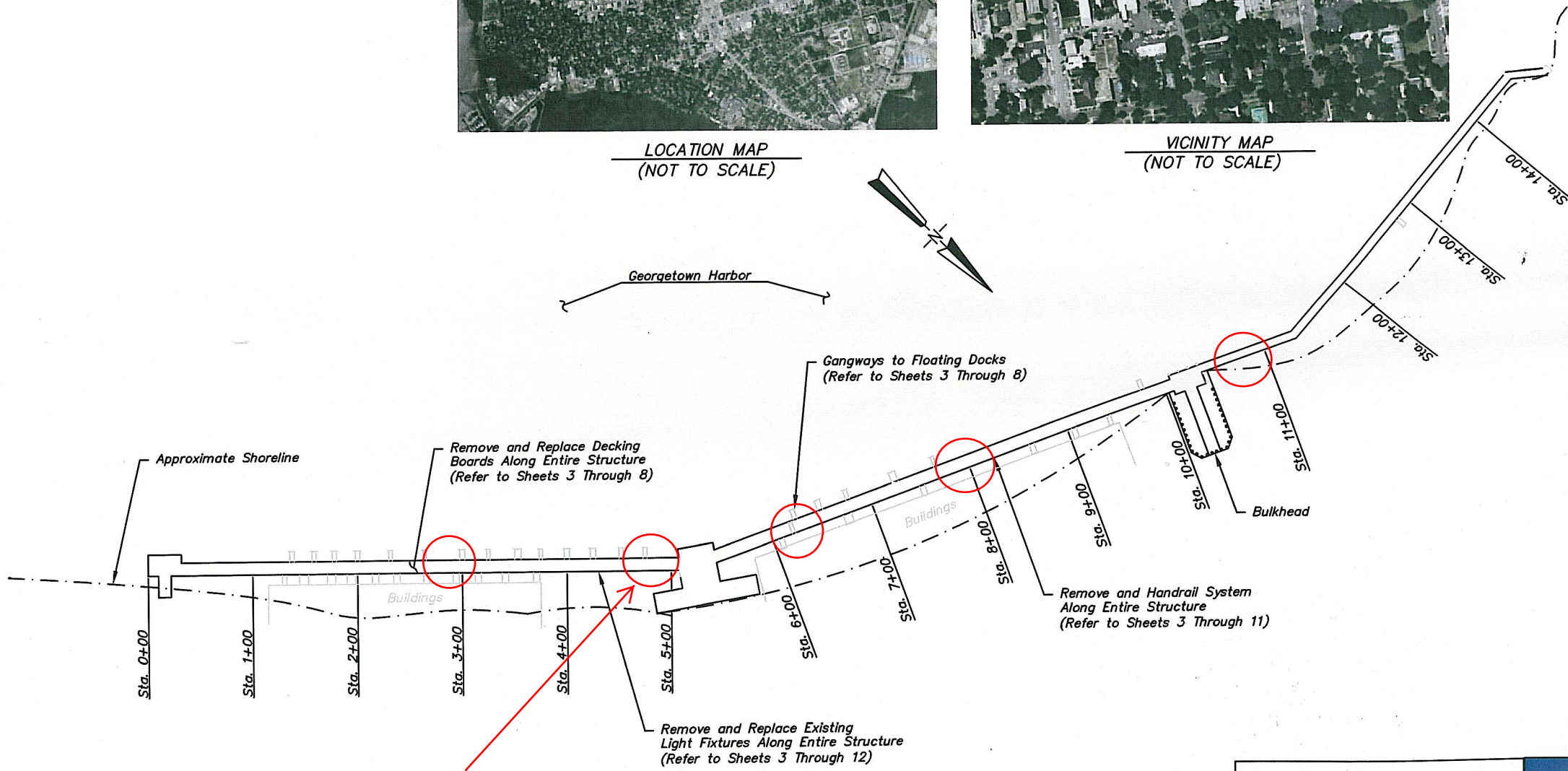
LOCATION MAP  
 (NOT TO SCALE)



VICINITY MAP  
 (NOT TO SCALE)



Georgetown Harbor



OVERALL PLAN  
 (NOT TO SCALE)

APPROXIMATE  
 REPAIR WORK  
 AREAS  
 (TYPICAL)



HARBORWALK RENOVATION  
 LOCATION & VICINITY MAPS AND PLAN

DRAWN BY: DBM		1180 SAM RITTENBERG BLVD. STE 105	DATE: 1/15/10
CHECKED BY: WDB		CHARLESTON, SC 29407	SCALE: NO SCALE
CODE: 6226		(843) 763-1576	SHEET NO. 1