

# CITY OF FOLEY

## PAVILION STEPS MODIFICATIONS

MAYOR  
JOHN E. KONIAR

COUNCIL  
J. WAYNE TRAWICK  
COUNCIL PRESIDENT  
DISTRICT 1

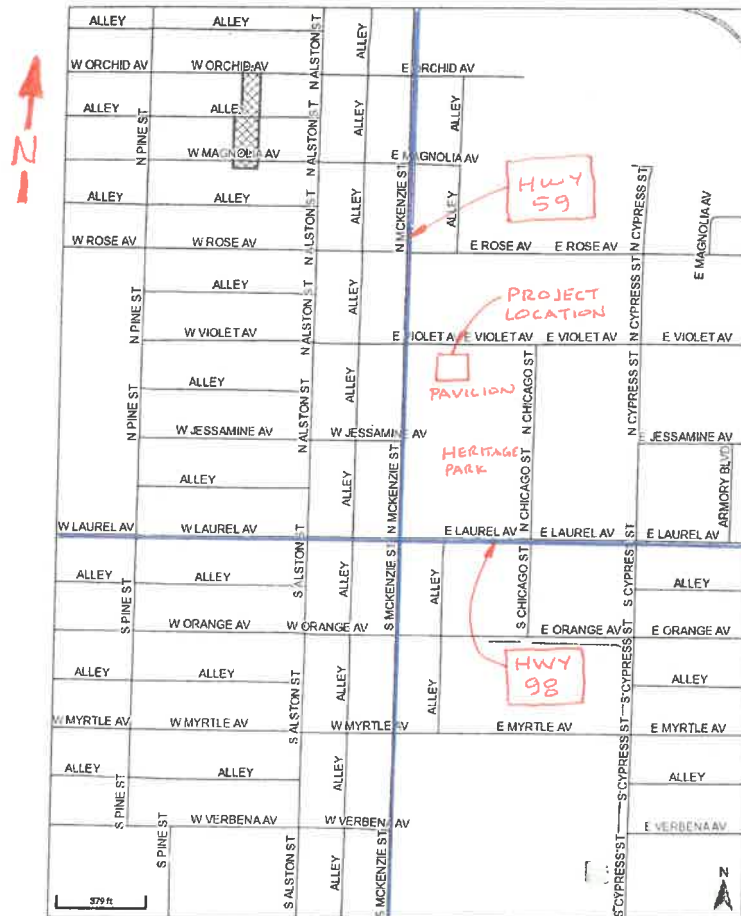
VERA J. QUAITES  
DISTRICT 2

RALPH G. HELLMICH  
COUNCIL VICE PRESIDENT  
DISTRICT 3

C. RICK BLACKWELL  
DISTRICT 4

CHARLIE J. EBERT III  
DISTRICT 5

CITY ADMINISTRATOR  
MICHAEL L. THOMPSON



SITE MAP

July 2019

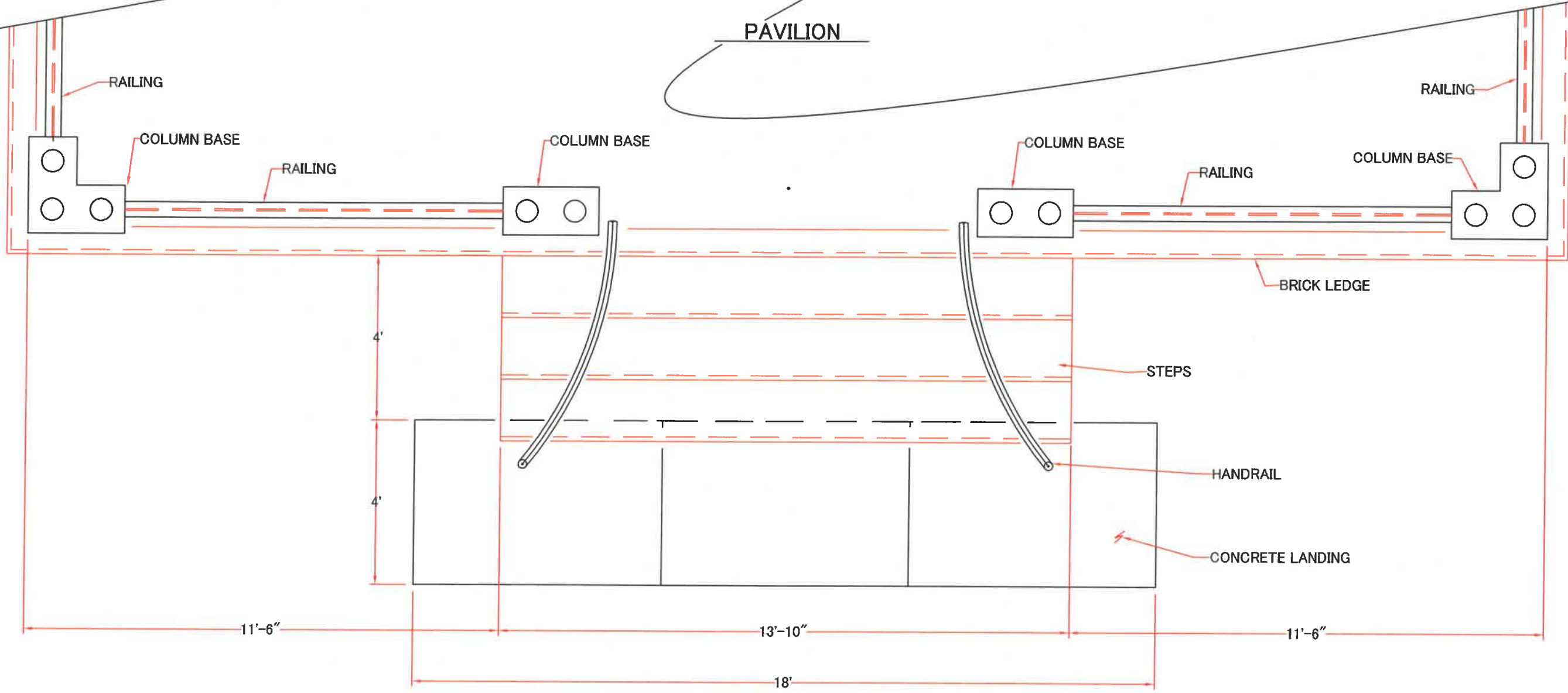
SHEET	DESCRIPTION	TITLE
01	EXISTING PLAN	
02	PLAN VIEW	
03	CONCRETE PLAN, SIDE VIEW AND SECTIONS	



CITY ENGINEER, CITY OF FOLEY

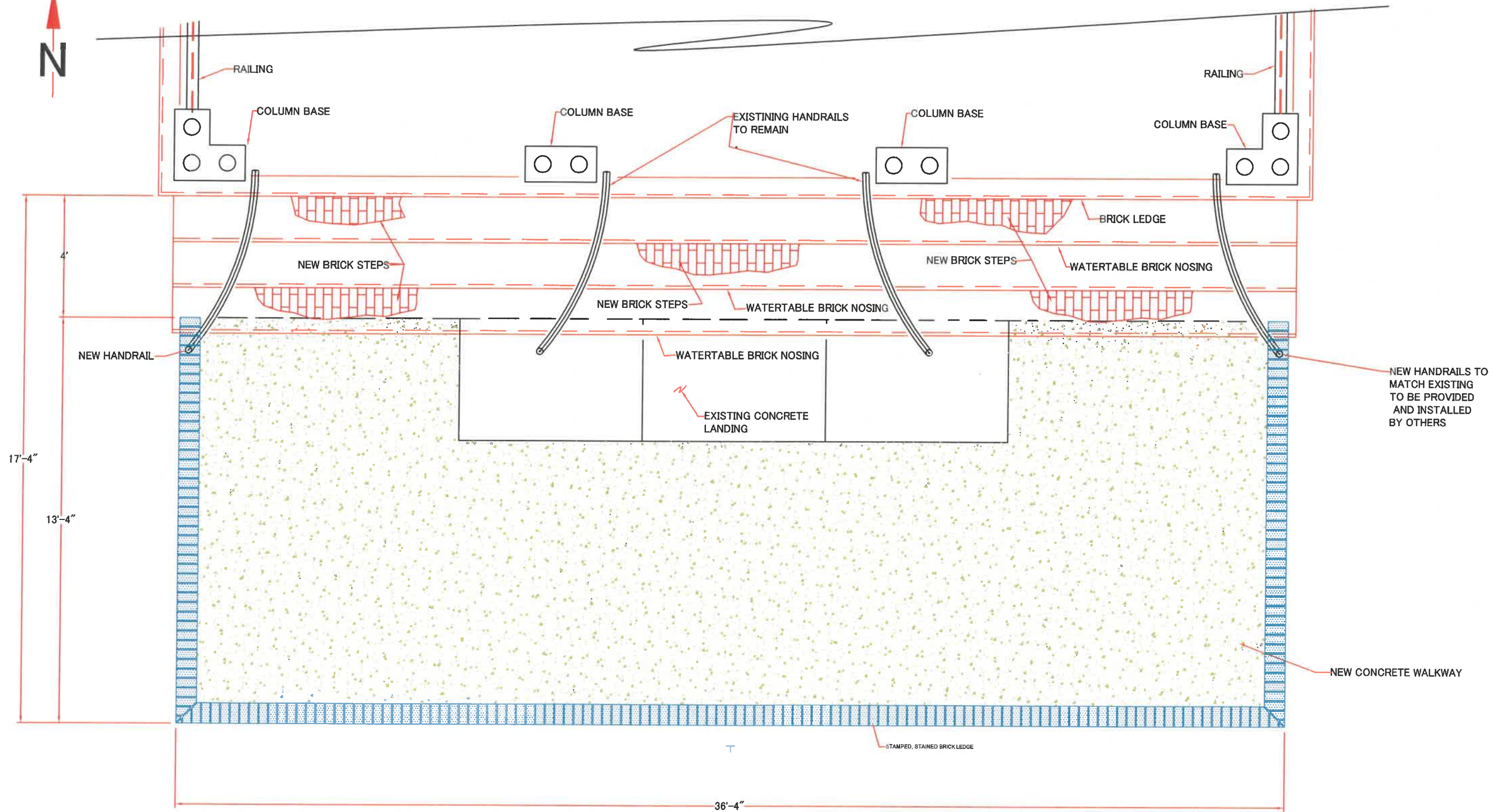


PAVILION



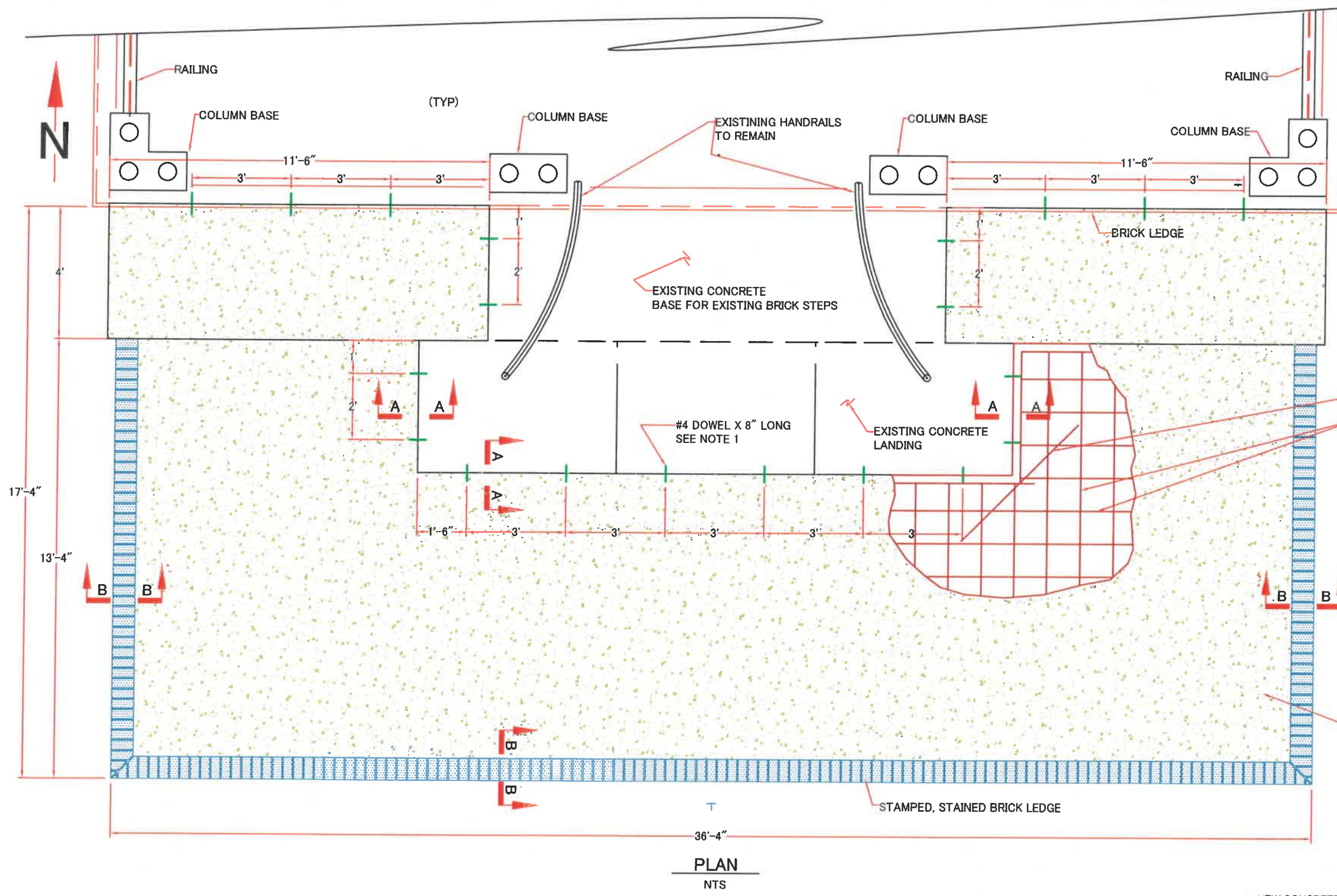
EXISTING PLAN  
NTS

CITY OF FOLEY	
PAVILION STEPS ADDITION	
EXISTING PLAN	
JULY 2019	DWG -01



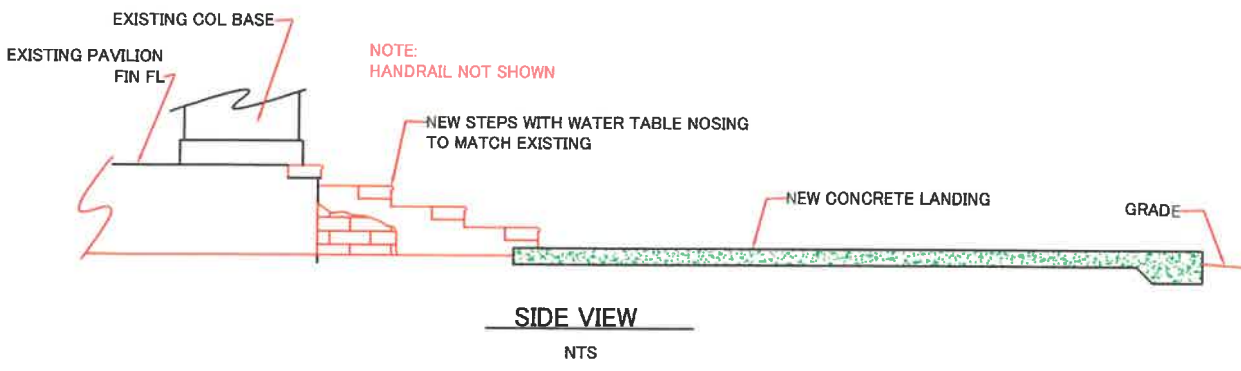
PLAN  
NTS

CITY OF FOLEY	
PAVILION STEPS ADDITION	
PLAN VIEW	
JULY 2019	DWG -02

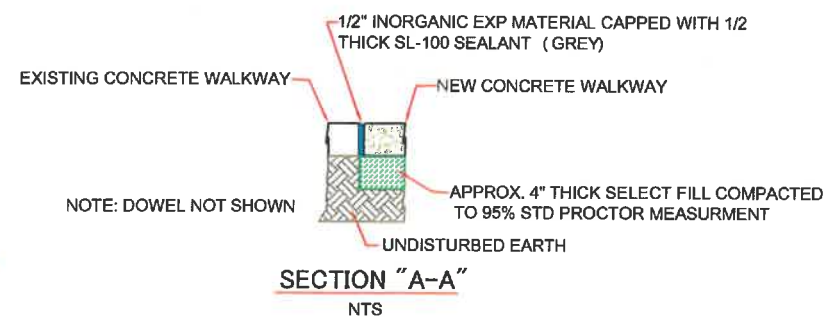


- NOTE:
1. #4 DOWEL X 8" LONG W/ 3" EMBEDMENT CENTERED IN SLAB
  2. ALL EXPOSED CONCRETE EDGES TO RECEIVE 1/2" RADIUS.
  3. PLACE REINFORCING STEEL WITH A MIN OF 2.5" CLEARANCE FROM ALL SIDES AND BOTTOM.
  4. REINFORCING STEEL TO BE SUPPORTED USING PLASTIC OR METAL CHAIRS. BRICKS OR OTHER ITEMS ARE NOT ALLOWED.
  5. SLAB TO RECEIVE A MIN SLOPE.
  6. TIE DOWELS TO REINFORCING STEEL

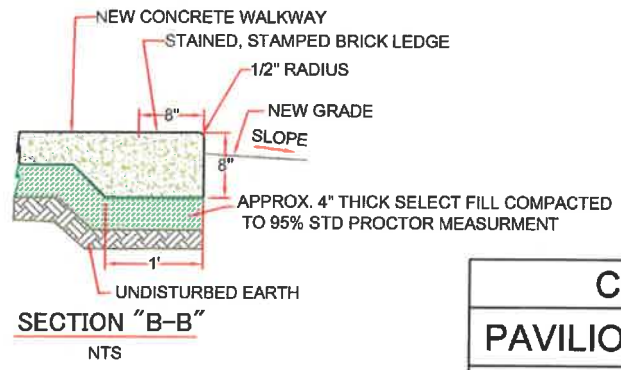
**PLAN**  
NTS



**SIDE VIEW**  
NTS



**SECTION "A-A"**  
NTS



**SECTION "B-B"**  
NTS

<b>CITY OF FOLEY</b>	
<b>PAVILION STEPS ADDITION</b>	
CONCRETE PLAN SIDE VIEW AND SECTIONS	
JULY 2019	DWG -03