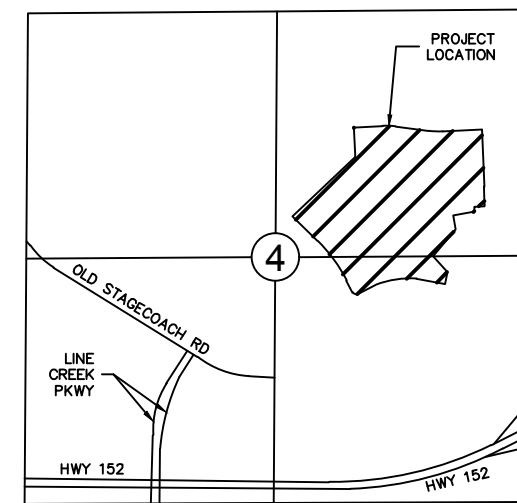




THE CONTRACTOR SHALL ADHERE TO THE PROVISIONS OF THE SENATE BILL NUMBER 583, 78TH GENERAL ASSEMBLY OF THE STATE OF MISSOURI. THE BILL REQUIRES THAT ANY PERSON OR FIRM DOING EXCAVATION ON PUBLIC RIGHT-OF-WAY DO SO ONLY AFTER GIVING NOTICE TO, & OBTAINING INFORMATION FROM, UTILITY COMPANIES. STATE LAW REQUIRES 48 HOURS ADVANCE NOTICE. CALL 1-800-DIG-RITE.



SECTION 4, T51N, R33W

VICINITY MAP
NOT TO SCALE

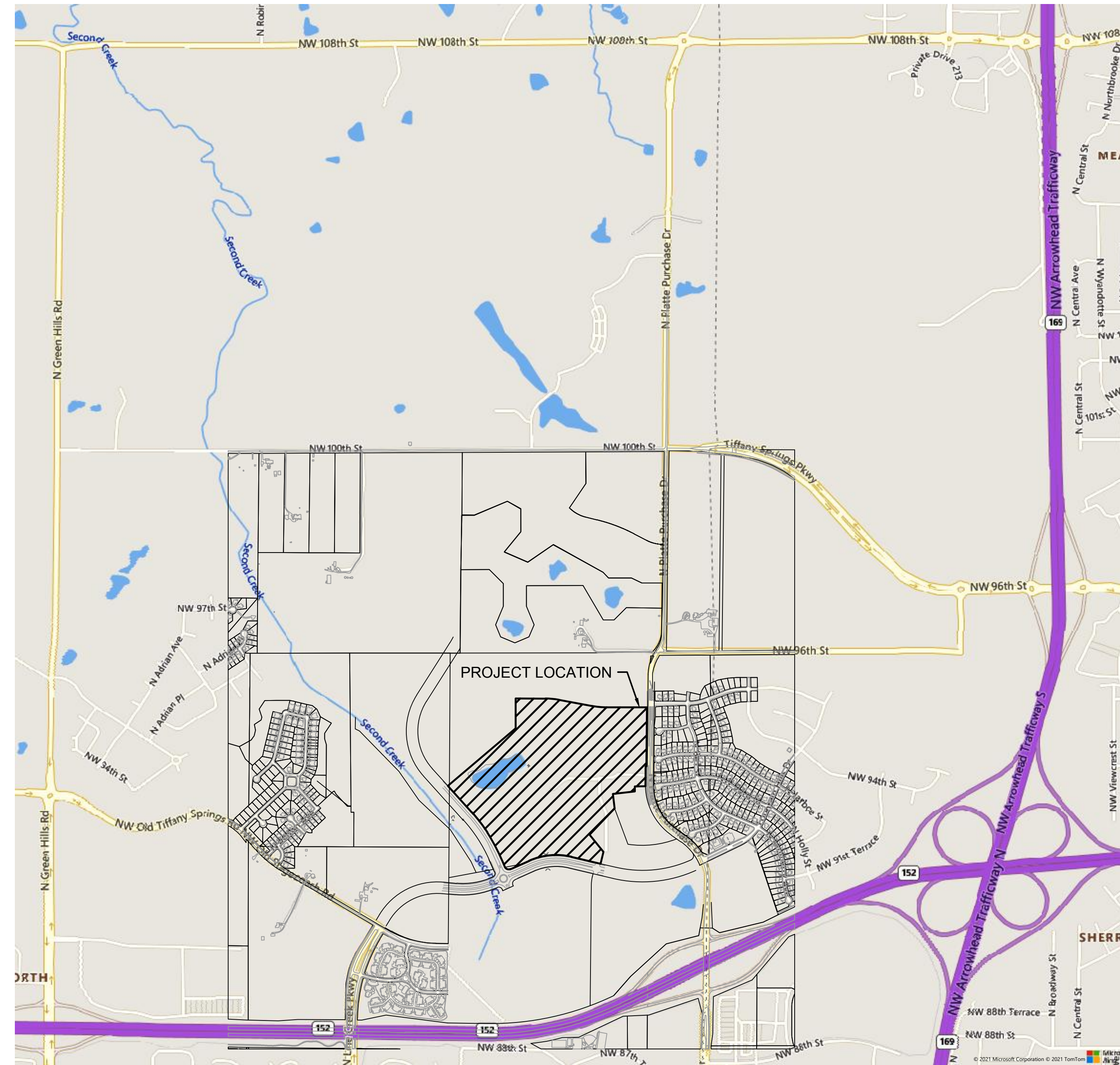
BENCHMARK
"X" CUT ON NORTH TOP FLANG
BOLT ON SOUTHEAST AREA OF
ROUNDBOULT FIRE HYDRANT
ELEV. = 1038.75

SITE DISTURBANCE PLANS

FOR

PLATTE COUNTY R3

A SUBDIVISION LYING IN THE NORTHEAST & SOUTHEAST 1/4
OF SECTION 4, TOWNSHIP 51N, RANGE 33W
IN THE CITY OF KANSAS CITY, PLATTE COUNTY, MISSOURI



GENERAL NOTES:

1. THE INTENT OF THIS LAND DISTURBANCE PLAN IS TO ASSIST THE DEVELOPER IN HIS RESPONSIBILITY TO PROVIDE ALL MATERIALS, TOOLS, EQUIPMENT AND LABOR NECESSARY TO CONTROL EROSION, SILTATION AND DISCHARGES OF SOIL MATERIAL (SEDIMENT) INTO DOWNSTREAM SYSTEMS OR RECEIVING CHANNELS. THIS SHALL BE REQUIRED DURING ALL PHASES OF CONSTRUCTION AND UNTIL SUITABLE GROUND COVER IS ESTABLISHED FOR ALL DISTURBED AREAS. IF ANY METHOD OF CONTROL FAILS, THE DEVELOPER SHALL NOTIFY THE OWNER IMMEDIATELY, SO THAT THE OWNER OR HIS AGENT CAN REVIEW THE DEVELOPER'S PROPOSED METHOD OF REPAIR.

THIS PLAN INDICATES THE CRITICAL AREA(S) OF CONCERN AND THESE AREA(S) WILL BE CONTROLLED AS A MINIMUM, THE CONTROL MAY CONSIST OF TEMPORARY CONTROL MEASURES AS SHOWN ON THE PLANS OR ORDERED BY THE OWNER DURING THE LIFE OF THE CONTRACT TO CONTROL EROSION OR WATER POLLUTION, THROUGH THE USE OF BERMS, DIKES, DAMS, SEDIMENT BASINS, FIBER MATS, NETTING, STRAW BALES, GRAVEL, MULCHES, GRASSES, SLOPE DRAINS, DIVERSION SWALES OR OTHER EROSION CONTROL DEVICES OR METHODS. THE OWNER HAS THE AUTHORITY TO LIMIT THE SURFACE AREA OF ERODIBLE EARTH MATERIAL EXPOSED BY THE CONSTRUCTION OPERATIONS AND TO DIRECT THE DEVELOPER TO PROVIDE IMMEDIATE PERMANENT OR TEMPORARY POLLUTION CONTROL MEASURES TO PREVENT CONTAMINATION OF ADJACENT STREAMS OR OTHER WATER COURSES, LAKES, PONDS, OR OTHER AREAS OF WATER IMPOUNDMENT OR CONVEYANCES.

THE TEMPORARY POLLUTION CONTROL PROVISIONS CONTAINED HEREIN SHALL BE COORDINATED WITH ANY PERMANENT EROSION CONTROL FEATURES SPECIFIED ELSEWHERE IN THE CONTRACT TO THE EXTENT PRACTICAL TO ASSURE ECONOMICAL, EFFECTIVE AND CONTINUOUS EROSION CONTROL THROUGHOUT THE CONSTRUCTION AND POST CONSTRUCTION PERIOD.

2. THIS SEDIMENTATION CONTROL PLAN MAKES USE OF THE FOLLOWING APPLICATIONS:

- X_PRESERVATION OF EXISTING VEGETATION
- X_SEDIMENT BARRIERS
- X_SEDIMENT TRAPS
- X_INLET PROTECTION
- X_SEDIMENT BASINS
- X_OUTLET PROTECTION
- SOIL RETAINING SYSTEMS
- SLOPE DRAINS
- SUBSURFACE DRAINS

PHYSICAL DESCRIPTION OF EACH SPECIFIC SEDIMENT CONTROL DEVICE TO BE UTILIZED IS CALLED OUT ON THE PLANS WITH INSTALLATION PROCEDURES, CONSTRUCTION SPECIFICATIONS AND MAINTENANCE ARRANGEMENT AS CALLED FOR ON THE DETAIL SHEET. IN ADDITION TO THE MEASURES SPECIFIED, THE FOLLOWING GENERAL PRACTICES SHALL BE ADHERED TO WHEN APPLICABLE.

A) CLEARING AND GRUBBING WITHIN 50' OF A DEFINED DRAINAGE COURSE SHOULD BE AVOIDED WHEN POSSIBLE, WHERE CHANGES TO A DEFINED DRAINAGE COURSE OCCUR, WORK SHOULD BE DELAYED UNTIL ALL MATERIALS AND EQUIPMENT NECESSARY TO PROTECT AND COMPLETE THE DRAINAGE CHANGE ARE ON SITE. CHANGES SHALL BE COMPLETED AS QUICKLY AS POSSIBLE ONCE THE WORK HAS BEEN INITIATED. THE AREA IMPACTED BY THE CONSTRUCTION ACTIVITIES SHALL BE REVEGETATED OR PROTECTED FROM EROSION AS SOON AS POSSIBLE. AREAS WITHIN 50' OF A DEFINED DRAINAGE WAYS SHOULD BE RECOUNTED AS NEEDED OR OTHERWISE PROTECTED WITHIN FIVE (5) WORKING DAYS AFTER GRADING HAS CEASED.

B) WHERE SOIL DISTURBING ACTIVITIES CEASE IN AN AREA FOR MORE THAN 14 DAYS, THE DISTURBED AREAS SHALL BE PROTECTED FROM EROSION BY STABILIZING THE AREA WITH MULCH OR OTHER SIMILARLY EFFECTIVE EROSION CONTROL MEASURES. IF THE SLOPE OF THE AREA IS GREATER THAN 3:1 OR IF THE SLOPE IS GREATER THAN 3% AND GREATER THAN 150 FEET IN LENGTH, THEN THE DISTURBED AREAS SHALL BE PROTECTED FROM EROSION BY STABILIZING THE AREA WITH MULCH OR OTHER SIMILARLY EFFECTIVE EROSION CONTROL MEASURES IF ACTIVITIES CEASE FOR MORE THAN SEVEN (7) DAYS.

C) EXISTING VEGETATION SHALL BE PRESERVED TO THE EXTENT AND WHERE PRACTICAL, IN NO CASE SHALL DISTURBED AREAS REMAIN WITHOUT VEGETATIVE GROUND COVER FOR A PERIOD IN EXCESS OF 60 DAYS.

D) ADDITIONAL SITE MANAGEMENT PRACTICES WHICH SHALL BE ADHERED TO DURING THE CONSTRUCTION PROCESS SHALL INCLUDE:

SOLID AND HAZARDOUS WASTE MANAGEMENT INCLUDING PROVIDING TRASH CONTAINERS AND REGULAR SITE CLEAN UP FOR PROPER DISPOSAL OF SOLID WASTE SUCH AS BUILDING MATERIAL, PRODUCT/MATERIAL SHIPPING WASTE, FOOD CONTAINERS AND CUPS, AND PROVIDING CONTAINERS FOR THE PROPER DISPOSAL OF WASTE PAINTS SOLVENTS, AND CLEANING COMPOUNDS.

PROVISIONS OF PORTABLE TOILETS FOR PROPER DISPOSAL OF SANITARY SEWAGE.

STORAGE OF CONSTRUCTION MATERIALS AWAY FROM DRAINAGE COURSES AND LOW AREAS.

INSTALLATION OF CONTAINMENT BERMS AND USE OF DRIP PANS AT PETROLEUM PRODUCT AND LIQUID STORAGE TANKS AND CONTAINERS.

3. ALL DISTURBED AREAS SHALL BE SEEDED, FERTILIZED AND MULCHED, OR SODDED, IN ACCORDANCE WITH THE STANDARDS AND SPECIFICATIONS ADOPTED BY THE REVIEWING GOVERNING AGENCY AND GOOD ENGINEERING PRACTICES. THIS SHALL BE COMPLETED WITHIN FOURTEEN (14) DAYS AFTER COMPLETING THE WORK, IN ANY AREA, IF THIS IS OUTSIDE OF THE SEEDING PERIOD, SILT BARRIERS OR OTHER SIMILARLY EFFECTIVE MEASURES SHALL BE PROVIDED UNTIL SUCH TIME THAT THE AREAS CAN BE SEEDED.

4. THE CONSTRUCTION COVERED BY THESE PLANS SHALL CONFORM TO ALL CURRENT STANDARDS AND SPECIFICATIONS ADOPTED BY THE REVIEWING GOVERNING AGENCY. THE DEVELOPER WILL BE RESPONSIBLE FOR DETERMINING ALL ADDITIONAL STANDARDS, SPECIFICATIONS OR REQUIREMENTS WHICH ARE REQUIRED BY GOVERNING AGENCIES (INCLUDING LOCAL, STATE AND FEDERAL AUTHORITIES) HAVING JURISDICTION OVER THE WORK PROPOSED BY THESE CONSTRUCTION DRAWINGS.

5. ALL EROSION CONTROL MEASURES, TEMPORARY OR PERMANENT, REQUIRE MAINTENANCE TO PRESERVE THEIR EFFECTIVENESS. ALL EROSION CONTROL DEVICES SHALL BE INSPECTED IMMEDIATELY AFTER EACH HEAVY RAINSTORM AND AT LEAST DAILY DURING PROLONGED RAINFALL. ANY REQUIRED REPAIRS SHOULD BE MADE IMMEDIATELY. ALL COSTS ASSOCIATED WITH THE REPAIR WORK INCLUDING RELATED INCIDENTALS WILL BE THE DEVELOPER'S RESPONSIBILITY AND SHALL BE INCLUDED IN THE DEVELOPER'S BID FOR THE PROPOSED WORK.

6. ALL EROSION CONTROL MEASURES TO BE PER KANSAS CITY, MISSOURI STANDARD DETAILS.

7. THE DEVELOPER MUST REMOVE AT HIS COST ANY BAD SUBSURFACE SOIL WHICH WOULD NOT BE ABLE TO SUPPORT ANY PROPOSED PUBLIC IMPROVEMENT. BACKFILL SHALL BE ACCOMPLISHED IN ACCORDANCE WITH SECTIONS 2100 AND 2201 ENTITLED "GRADING AND SITE PREPARATION" AND "SUBGRADE PREPARATION".

KANSAS CITY, MISSOURI ORDINANCE NO. 981135

SEC. 63-29. SITE MAP AND GRADING PLAN

- (1) SEE "GRADING PLAN(S)"
- (2) SEE "GRADING PLAN(S)"
- (3) SEE "GRADING PLAN(S)"
- (4) SEE "GRADING PLAN(S)"
- (5) SEE SOILS MAP, THIS SHEET
- (6) SEE "GRADING PLAN(S)" & EROSION CONTROL PLANS
- (7) SEE GRADING PLAN FOR LIMITS OF DISTURBANCE
- (8) SEE "EROSION CONTROL PLAN(S)"
- (9) SEE "GRADING PLAN(S)"
- (10) SEE THIS PLAN
- (11) SEE ALL SHEETS FOR P.E. SEAL

SEC. 63-30. EROSION AND SEDIMENT CONTROL PLAN

(1)	FROM "DRAINAGE MAP(S)" POINT OF INTEREST	AREA (ACS.)	COMPOSITE "C"	Q ₀ (CFS)	POINT YIELD INTEREST	ANNUAL YIELD (CF/AC)	DURATION OF DISTURBANCE (WKS)	POINT YIELD (CF)
	1	58.71	0.66	284.80	A	90	52	5284
	2	27.62	0.56	113.68	B	120	52	3314

(2) SEDIMENT YIELD PER POINT OF INTEREST, FROM APWA SEC. 5608-1, FIGURE 6.

(3-5) SEE "EROSION CONTROL PLAN(S)". ALSO ALL MEASURES WILL BE MONITORED AFTER EVERY 0.5" RAINFALL BUT NOT TO EXCEED EVERY 14 DAYS.

(7) SEE "EROSION CONTROL PLAN(S)"

(8) SEE "EROSION CONTROL PLAN(S)"

(9) SEE CONSTRUCTION SCHEDULE BELOW.

SEC. 63-36. COORDINATION WITH OTHER PERMITS

THE APPLICANT SHALL INSPECT THE LAND DISTURBANCE SITE AT LEAST EVERY FOURTEEN (14) DAYS, OR MORE FREQUENTLY IF REQUIRED ON THE PLAN, AND WITHIN TWENTY-FOUR HOURS FOLLOWING EACH RAINFALL EVENT OF 1/2" OR MORE WITHIN ANY TWENTY-FOUR HOUR PERIOD. FOR DISTURBED AREAS THAT HAVE NOT BEEN STABILIZED, ALL EROSION AND SEDIMENT CONTROL MEASURES SHALL BE INSPECTED FOR PROPER INSTALLATION, OPERATION AND MAINTENANCE. LOCATIONS WHERE STORM WATER LEAVES THE SITE SHALL BE INSPECTED FOR EVIDENCE OF EROSION OR SEDIMENT DEPOSITION. ANY DEFICIENCIES SHALL BE NOTED IN A REPORT OF THE INSPECTION.

INSPECTION REPORTS SHALL BE KEPT BY THE APPLICANT AND SHALL BE SUBMITTED TO THE DIRECTOR UPON REQUEST. THE INSPECTION REPORT SHALL INCLUDE THE FOLLOWING MINIMUM INFORMATION:

- (1) INSPECTOR'S NAME;
- (2) DATE OF INSPECTION;
- (3) OBSERVATIONS RELATIVE TO THE EFFECTIVENESS OF THE EROSION AND SEDIMENT CONTROL MEASURES;
- (4) ACTIONS NECESSARY TO CORRECT DEFICIENCIES;
- (5) SAMPLING RESULTS, IF TAKEN; AND
- (6) SIGNATURE OF APPLICANT OR PERSON PERFORMING THE INSPECTION IF DULY AUTHORIZED TO DO SO.

THE DIRECTOR SHALL ALSO PERFORM REGULAR INSPECTIONS OF THE LAND DISTURBANCE SITE TO ENSURE COMPLIANCE WITH THE EROSION AND SEDIMENT CONTROL PLAN FOR THE SITE AND THE CITY'S ADOPTED STANDARDS.

SEC. 63-39. MAINTENANCE OF CONTROL MEASURES

THE APPLICANT SHALL AT ALL TIMES MAINTAIN ALL EROSION AND SEDIMENT CONTROL MEASURES IN GOOD ORDER AND IN COMPLIANCE WITH THE EROSION AND SEDIMENT CONTROL PLAN FOR THE SITE AND WITH THE CITY'S ADOPTED STANDARDS, FOR THE DURATION OF THE PERMIT AS DEFINED IN SECTION 63-35 OF THIS ARTICLE. IN DETERMINING THE APPLICANT'S COMPLIANCE WITH THE EROSION AND SEDIMENT CONTROL PLAN FOR THE SITE, THE DIRECTOR SHALL TAKE INTO CONSIDERATION ANY RESULTS THAT APPLICANT HAS OBTAINED THROUGH SAMPLING.

SEC. 63-40. SAMPLING

THE APPLICANT SHALL HAVE THE OPTION OF INCLUDING A SYSTEM OF REGULAR SAMPLING BY INDIVIDUALS APPROVED TO PERFORM SUCH SAMPLING BY THE CITY OF KANSAS CITY AS A PART OF THE APPLICANT'S EROSION AND SEDIMENT CONTROL PLAN. THE DIRECTOR MAY REQUIRE SAMPLING TO DETERMINE THE EFFECTIVENESS OF THE EROSION CONTROL PLAN OR TO OBTAIN INFORMATION TO INVESTIGATE COMPLAINTS REGARDING THE SITE. SAMPLING SHALL NOT BE THE ONLY ITEM REVIEWED TO DETERMINE COMPLIANCE WITH THE EROSION AND SEDIMENT CONTROL PLAN FOR THE SITE. THE DIRECTOR MAY ALSO PERFORM SAMPLING.

SEC. 63-41. REMOVAL OF CONTROL MEASURES

THE APPLICANT SHALL RECEIVE THE DIRECTOR'S APPROVAL BEFORE ANY STRUCTURAL EROSION AND SEDIMENT CONTROL MEASURE IDENTIFIED ON THE PLANS IS REMOVED OR MADE INEFFECTIVE. REMOVAL OF EROSION AND SEDIMENT CONTROL MEASURES MUST BE PERFORMED IN THE MANNER DESCRIBED IN THE EROSION AND SEDIMENT CONTROL PLAN AND IN ACCORDANCE WITH THE CITY'S ADOPTED STANDARDS. WHEN DETERMINING WHETHER AN EROSION AND SEDIMENT CONTROL MEASURE MAY BE REMOVED OR MADE INEFFECTIVE, THE DIRECTOR SHALL TAKE INTO CONSIDERATION TESTING RESULTS FURNISHED BY THE APPLICANT.

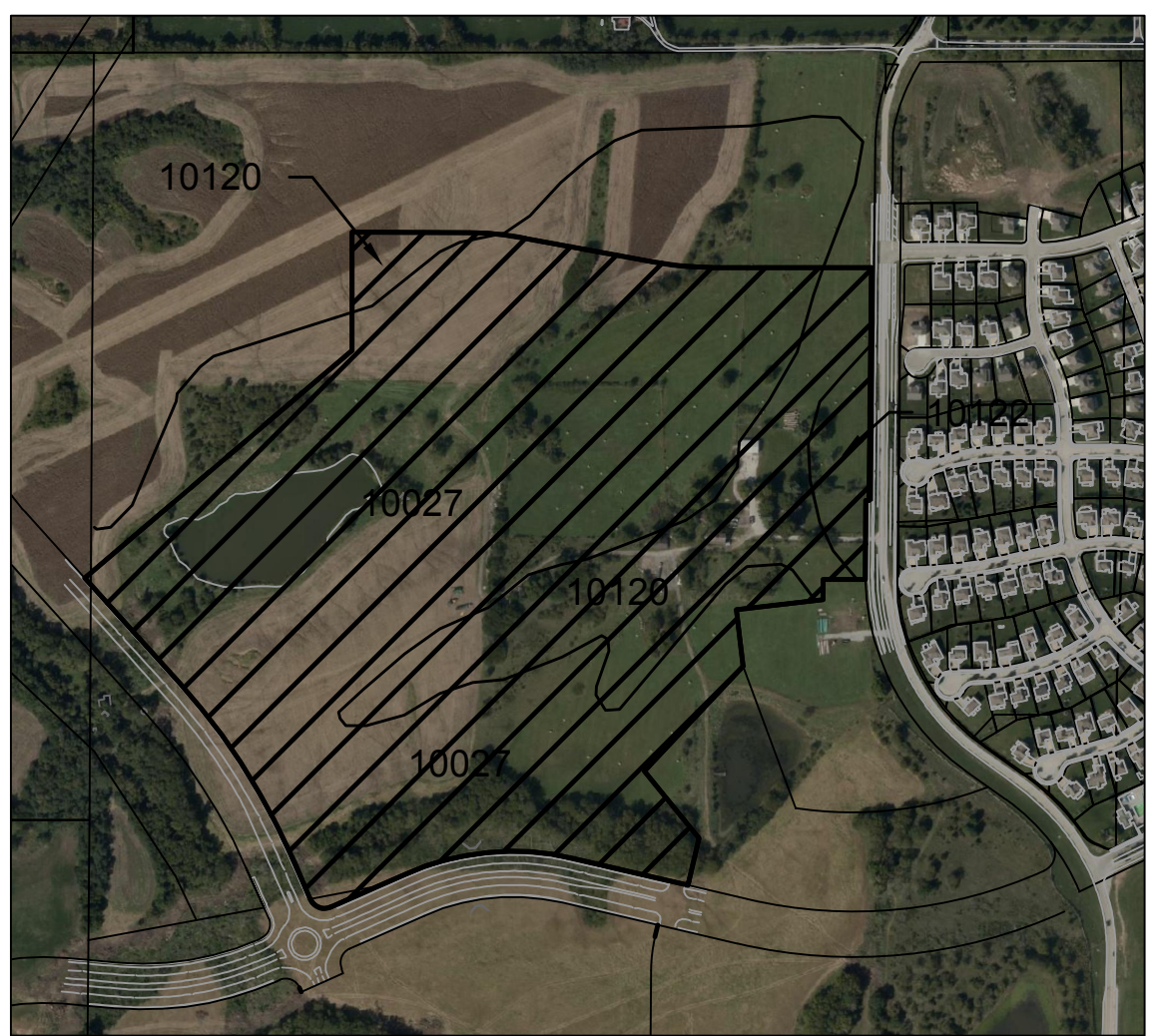
FEMA FLOOD INFORMATION

THE ENTIRE SITE IS LOCATED WITHIN ZONE X, AREAS DETERMINED TO BE OUTSIDE THE 0.2% ANNUAL CHANCE FLOODPLAIN, AS DEPICTED ON THE FEMA FLOOD INSURANCE RATE MAP (FIRM) NO. 29085C00836, REVISION DATE JANUARY 20, 2017.

ESTIMATE OF QUANTITIES

PRIVATE GRADING			
1	EXCAVATION	CY	
2	EMBANKMENT	CY	
SITE DISTURBANCE			
3	CONSTRUCTION ENTRANCE (VEHICLE TRACKING)	EA.	
4	ROCK CHECK DAMS	EA.	
5	SEDIMENT TRAP	EA.	
6	SEDIMENT BASIN	EA.	
7	CONCRETE WASHOUT	EA.	
8	DIVERSION BERM	L.F.	
9	SILT FENCE	L.F.	
10	CONSTRUCTION FENCE	L.F.	
11	OUTLET STRUCTURE (9'X7' INSIDE)	EA.	
12	STREAM BUFFER BOUNDARY MARKERS	EA.	

SUMMARY OF QUANTITIES AS INDICATED ABOVE AND ANY QUANTITIES AS SHOWN WITHIN THE PLANS HAVE BEEN PROVIDED FOR PERMITTING PURPOSES ONLY AND ARE NOT INTENDED FOR USE IN PREPARATION OF CONTRACT DOCUMENTS. QUANTITIES INTENDED FOR, BUT NOT LIMITED TO, THE PREPARATION OF PROPOSALS AND BID DOCUMENTS SHALL BE INDEPENDENTLY EVALUATED BY THE ESTIMATING PARTY BASED UPON THE CONTENTS OF THESE PLANS.



SOIL CLASSIFICATION FROM SOIL MAPS PUBLISHED IN THE SOIL SURVEYS OF CLAY AND RAY COUNTIES, MISSOURI, CATEGORIZE SOIL IN THIS WATERSHED AS:

HYDROLOGIC SOIL GROUP - C/D	SYMBOL - 10027	5% TO 9% SLOPES, ERODED
HIGGINSVILLE SILT LOAM		
HYDROLOGIC SOIL GROUP - C	SYMBOL - 10120	2% TO 5% SLOPES
SHARPSBURG SILT LOAM		
HYDROLOGIC SOIL GROUP - C	SYMBOL - 10122	5% TO 9% SLOPES, ERODED
SHARPSBURG SILT LOAM		

OPINION OF PROBABLE CONSTRUCTION SCHEDULE

CONSTRUCTION ACTIVITY	MONTH											
	1	2	3	4	5	6	7	8	9	10	11	12
INSTALL STREAM PROTECTING FENCE												
INSTALL EROSION CONTROL DEVICES - PHASE 1												
CLEARING & GRUBBING												
INSTALL SEDIMENT TRAPS AND SEDIMENT BASIN												
INSTALL SEDIMENT DETENTION BASIN OUTLET STRUCTURE												
PHASE 1 EROSION DEVICES REMOVAL												
INSTALL EROSION CONTROL DEVICES - PHASE 2												
GRADING												
STORM SEWER CONSTRUCTION												
REMOVE SEDIMENT TRAPS AND SEDIMENT BASIN												
INSTALL EROSION CONTROL DEVICES - PHASE 3												
PAVING AND CURBS												
STREET LIGHT CONSTRUCTION												
SEEDING ACTIVITY												
ESTABLISH VEGETATION												
INSTALL STREAM BUFFER SIGNS												
FINAL EROSION DEVICES REMOVAL												

NOTE: THIS SCHEDULE DOES NOT ADDRESS WEATHER DELAYS OR THE SEEDING SEASON. SCHEDULE IS PRELIMINARY FOR DESIGN USE ONLY AND MAY NEED MODIFIED DUE TO CONSTRUCTION AND CONTRACTOR AVAILABILITY. SCHEDULE MAY FLUCTUATE DUE TO MARKET DEMAND AND AS DETERMINED BY THE DEVELOPER AND IS TO BE USED AS A GUIDELINE ONLY. SEEDING IS NOT TO OCCUR DURING THE WINTER MONTHS. VEGETATION GROWING SEASONS ARE MARCH/APRIL AND SEPTEMBER/OCTOBER. IF STABILIZATION IS TO OCCUR OUTSIDE OF THE GROWING SEASON, EROSION CONTROL MAT IS TO BE IN PLACE TO STABILIZE DISTURBED AREA.

we design the future™

1828 Walnut Street Suite 922
Kansas City, MO 64108
1.816.412.1700

115 Wilcox Street Suite 210
Castle Rock, CO 80104
1.720.949.1689

HOLLISANDMILLER.COM

Hollis + Miller Architects
Missouri State Certificate of Authority
Architecture # 00003181
Structure # 000003333

CIVIL ENGINEER
Olsson, Inc.
State Certificate of Authority #001592
1301 Burlington Street, Suite 100
North Kansas City, MO 64116
913.361.1170 phone
913.361.1888 fax

LANDSCAPE ARCHITECT
Olsson, Inc.
State Certificate of Authority #2005000285
1301 Burlington Street, Suite 100
North Kansas City, MO 64116
913.361.1170 phone
913.361.1888 fax

MEPF ENGINEER
Henderson Engineers
State Certificate of Authority #E-556D
8345 Lenexa Drive, Ste 300
Lenexa, KS 66214
913.742.5000 phone
913.742.5001 fax

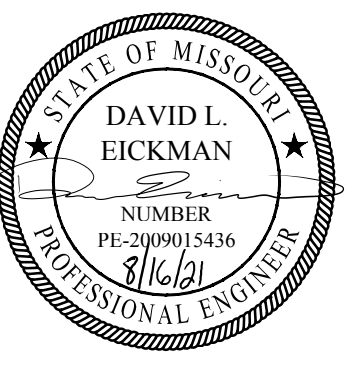
AVIT ENGINEER
Henderson Engineers
State Certificate of Authority #E-556D
8345 Lenexa Drive, Ste 300
Lenexa, KS 66214
913.742.5000 phone
913.742.5001 fax

SITE DEVELOPMENT PACKAGE

Platte County Middle
Platte County School District
N Platte Purchase Drive & NW 95th,
Kansas City, MO 64154

REVISIONS:

#	Description	Date



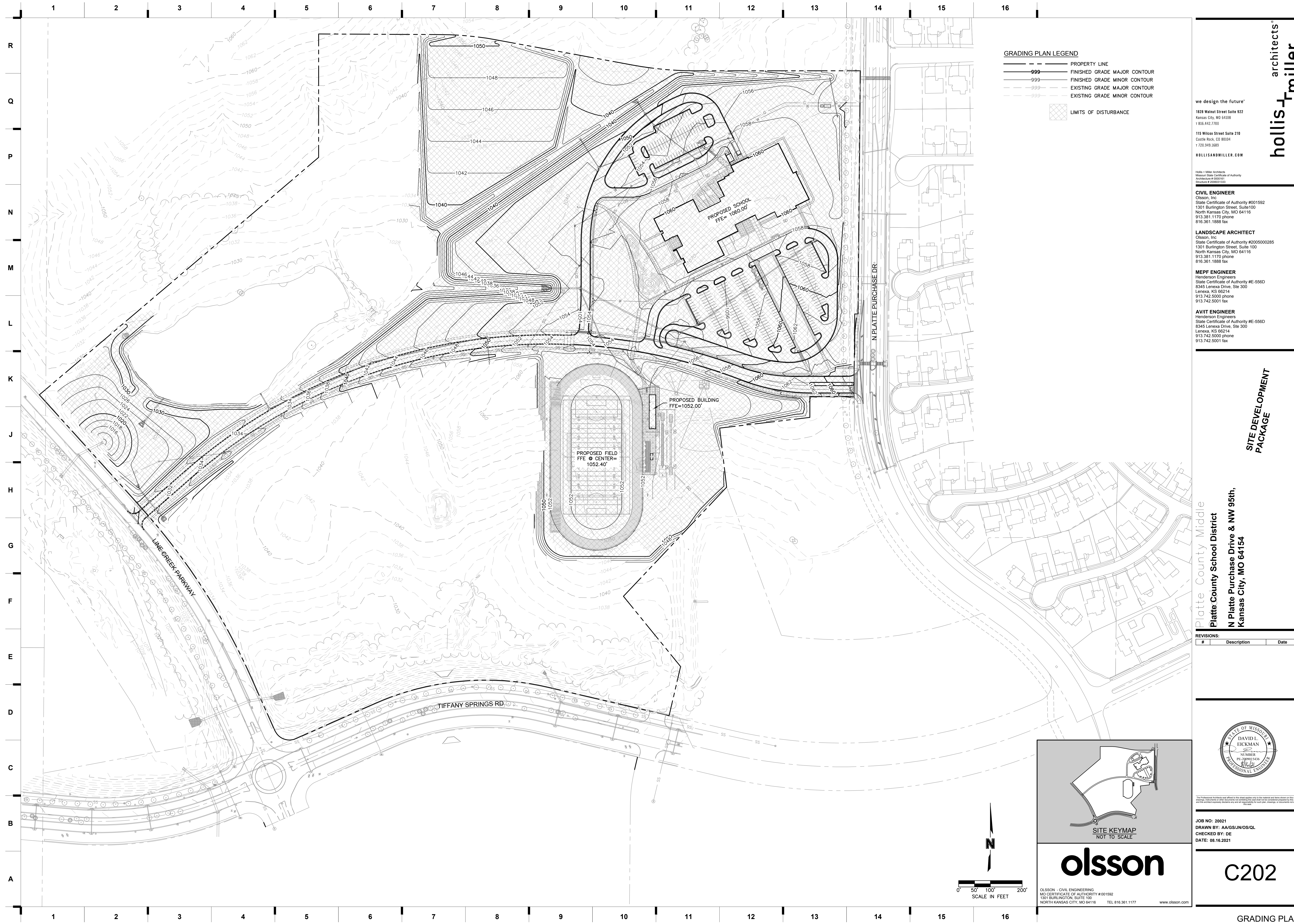
The Professional Architects and Engineers seal on this sheet applies only to the signed and sealed sheets on this sheet. All drawings, specifications or contracts are subject to the conditions and terms set forth in the contract documents and the architect's general conditions and all other drawings, specifications, or documents not attached to this sheet.

JOB NO: 20021
DRAWN BY: AAGS/JUN/OS/Q
CHECKED BY: DE
DATE: 08.16.2021

olsson

OLSSON - CIVIL ENGINEERING
MO CERTIFICATE OF AUTHORITY #001592
1301 BURLINGTON, SUITE 100
NORTH KANSAS CITY, MO 64116 TEL 816.361.1177 www.olson.com

C201



GRADING PLAN LEGEND

---	PROPERTY LINE
—	FINISHED GRADE MAJOR CONTOUR
- - -	FINISHED GRADE MINOR CONTOUR
- - -	EXISTING GRADE MAJOR CONTOUR
- - -	EXISTING GRADE MINOR CONTOUR
▨	LIMITS OF DISTURBANCE

hollis + miller architects
 we design the future™
 1828 Walnut Street Suite 922
 Kansas City, MO 64108
 1.816.412.7700
 115 Wilcox Street Suite 210
 Castle Rock, CO 80104
 1.720.949.1889
 HOLLISANDMILLER.COM

Holly + Miller Architects
 Missouri State Certificate of Authority
 Architecture # 0000181
 Structures # 000003333

CIVIL ENGINEER
 Olsson, Inc.
 State Certificate of Authority #001592
 1301 Burlington Street, Suite 100
 North Kansas City, MO 64116
 913.381.1170 phone
 816.361.1888 fax

LANDSCAPE ARCHITECT
 Olsson, Inc.
 State Certificate of Authority #2005000285
 1301 Burlington Street, Suite 100
 North Kansas City, MO 64116
 913.381.1170 phone
 816.361.1888 fax

MEPF ENGINEER
 Henderson Engineers
 State Certificate of Authority #E-556D
 8345 Lenexa Drive, Ste 300
 Lenexa, KS 66214
 913.742.5000 phone
 913.742.5001 fax

AVIT ENGINEER
 Henderson Engineers
 State Certificate of Authority #E-556D
 8345 Lenexa Drive, Ste 300
 Lenexa, KS 66214
 913.742.5000 phone
 913.742.5001 fax

SITE DEVELOPMENT PACKAGE

Platte County Middle
 Platte County School District
 N Platte Purchase Drive & NW 95th,
 Kansas City, MO 64154

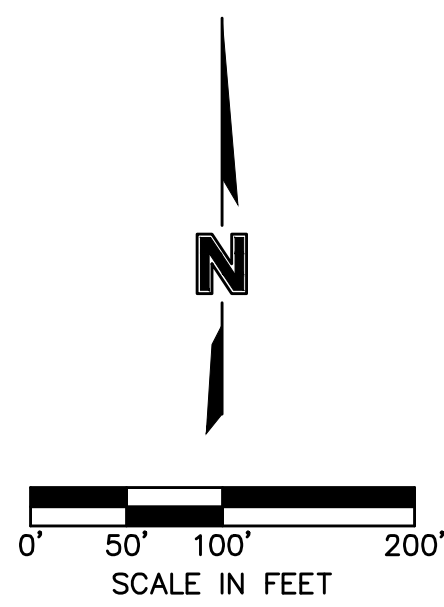
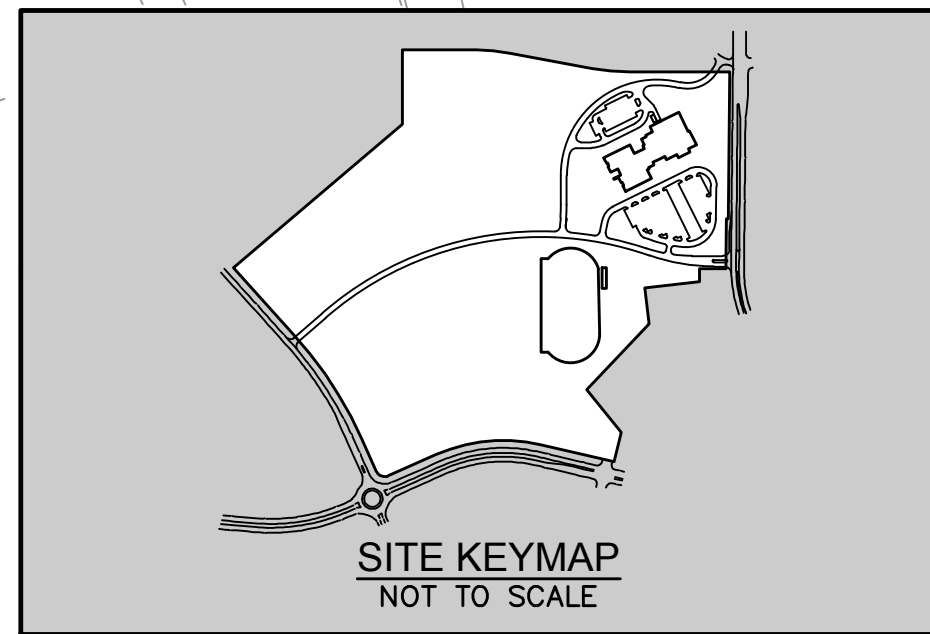
REVISIONS:

#	Description	Date



The Professional and/or other services are offered in this plan, subject only to the contract and terms shown on this sheet. All drawings, specifications or other documents not attached to this plan are hereby rejected to the extent they conflict with the attached instruments herein and all of which shall be subject to the terms, conditions, or documents contained herein.

JOB NO: 20021
 DRAWN BY: AAG/SUN/OS/QL
 CHECKED BY: DE
 DATE: 08.16.2021



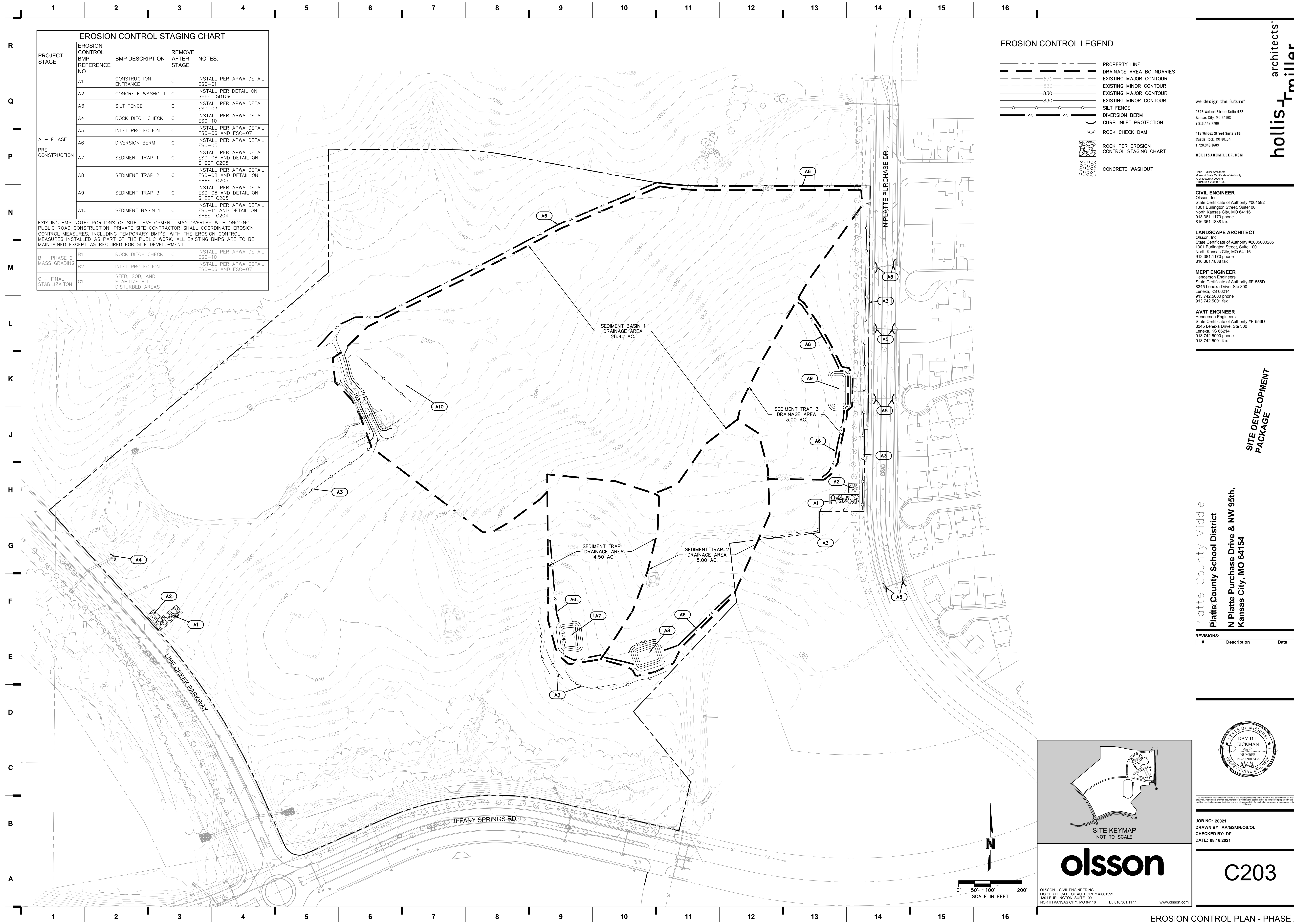
olsson

OLSSON - CIVIL ENGINEERING
 MISSOURI STATE CERTIFICATE OF AUTHORITY #001592
 1301 BURLINGTON, SUITE 100
 NORTH KANSAS CITY, MO 64116 TEL 816.361.1177 www.olsson.com

C202

GRADING PLAN

8/13/2021 10:09:55 AM



EROSION CONTROL STAGING CHART				
PROJECT STAGE	EROSION CONTROL BMP REFERENCE NO.	BMP DESCRIPTION	REMOVE AFTER STAGE	NOTES:
A - PHASE 1 PRE-CONSTRUCTION	A1	CONSTRUCTION ENTRANCE	C	INSTALL PER APWA DETAIL ESC-01
	A2	CONCRETE WASHOUT	C	INSTALL PER DETAIL ON SHEET SD109
	A3	SILT FENCE	C	INSTALL PER APWA DETAIL ESC-03
	A4	ROCK DITCH CHECK	C	INSTALL PER APWA DETAIL ESC-10
	A5	INLET PROTECTION	C	INSTALL PER APWA DETAIL ESC-06 AND ESC-07
	A6	DIVERSION BERM	C	INSTALL PER APWA DETAIL ESC-05
	A7	SEDIMENT TRAP 1	C	INSTALL PER APWA DETAIL ESC-08 AND DETAIL ON SHEET C205
	A8	SEDIMENT TRAP 2	C	INSTALL PER APWA DETAIL ESC-08 AND DETAIL ON SHEET C205
	A9	SEDIMENT TRAP 3	C	INSTALL PER APWA DETAIL ESC-08 AND DETAIL ON SHEET C205
	A10	SEDIMENT BASIN 1	C	INSTALL PER APWA DETAIL ESC-11 AND DETAIL ON SHEET C204
EXISTING BMP NOTE: PORTIONS OF SITE DEVELOPMENT, MAY OVERLAP WITH ONGOING PUBLIC ROAD CONSTRUCTION. PRIVATE SITE CONTRACTOR SHALL COORDINATE EROSION CONTROL MEASURES, INCLUDING TEMPORARY BMP'S, WITH THE EROSION CONTROL MEASURES INSTALLED AS PART OF THE PUBLIC WORK. ALL EXISTING BMP'S ARE TO BE MAINTAINED EXCEPT AS REQUIRED FOR SITE DEVELOPMENT.				
B - PHASE 2 MASS GRADING	B1	ROCK DITCH CHECK	C	INSTALL PER APWA DETAIL ESC-10
	B2	INLET PROTECTION	C	INSTALL PER APWA DETAIL ESC-06 AND ESC-07
C - FINAL STABILIZATION	C1	SEED, SOD, AND STABILIZE ALL DISTURBED AREAS		

EROSION CONTROL LEGEND	
	PROPERTY LINE
	DRAINAGE AREA BOUNDARIES
	EXISTING MAJOR CONTOUR
	EXISTING MAJOR CONTOUR
	EXISTING MINOR CONTOUR
	SILT FENCE
	DIVERSION BERM
	CURB INLET PROTECTION
	ROCK CHECK DAM
	ROCK PER EROSION CONTROL STAGING CHART
	CONCRETE WASHOUT

we design the future™
 1828 Walnut Street Suite 922
 Kansas City, MO 64108
 1.816.442.7100
 115 Wilcox Street Suite 210
 Castle Rock, CO 80104
 1.720.949.1689
 HOLLISANDMILLER.COM

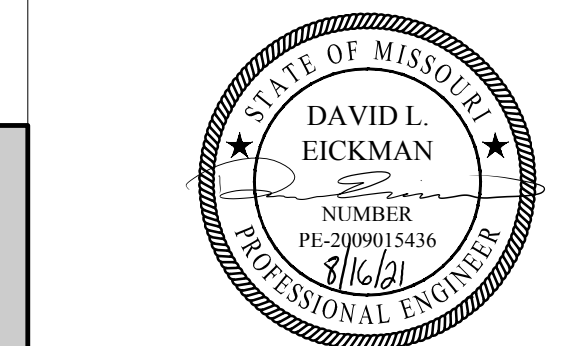
CIVIL ENGINEER
 Olsson, Inc.
 State Certificate of Authority #001592
 1301 Burlington Street, Suite 100
 North Kansas City, MO 64116
 913.381.1170 phone
 816.361.1888 fax

LANDSCAPE ARCHITECT
 Olsson, Inc.
 State Certificate of Authority #2005000285
 1301 Burlington Street, Suite 100
 North Kansas City, MO 64116
 913.381.1170 phone
 816.361.1888 fax

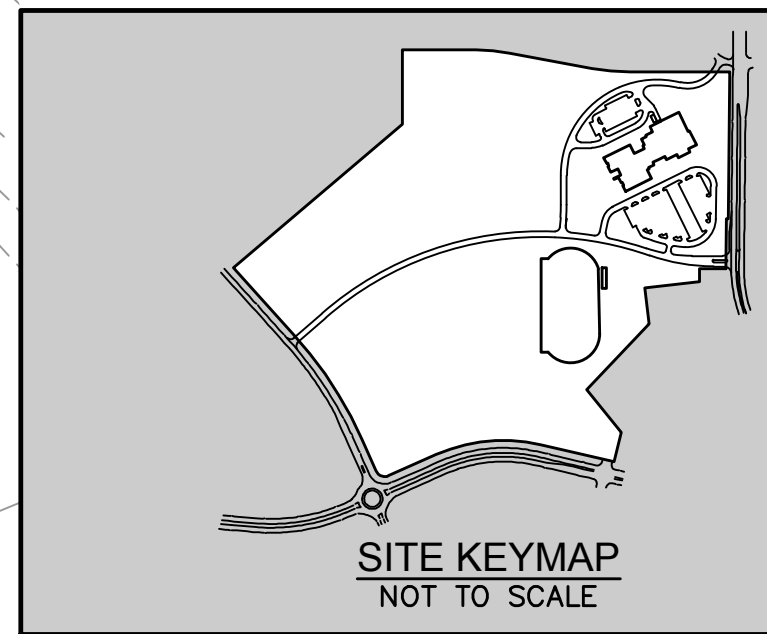
MEPF ENGINEER
 Henderson Engineers
 State Certificate of Authority #E-556D
 8345 Lenexa Drive, Ste 300
 Lenexa, KS 66214
 913.742.5000 phone
 913.742.5001 fax

AVIT ENGINEER
 Henderson Engineers
 State Certificate of Authority #E-556D
 8345 Lenexa Drive, Ste 300
 Lenexa, KS 66214
 913.742.5000 phone
 913.742.5001 fax

REVISIONS:		
#	Description	Date

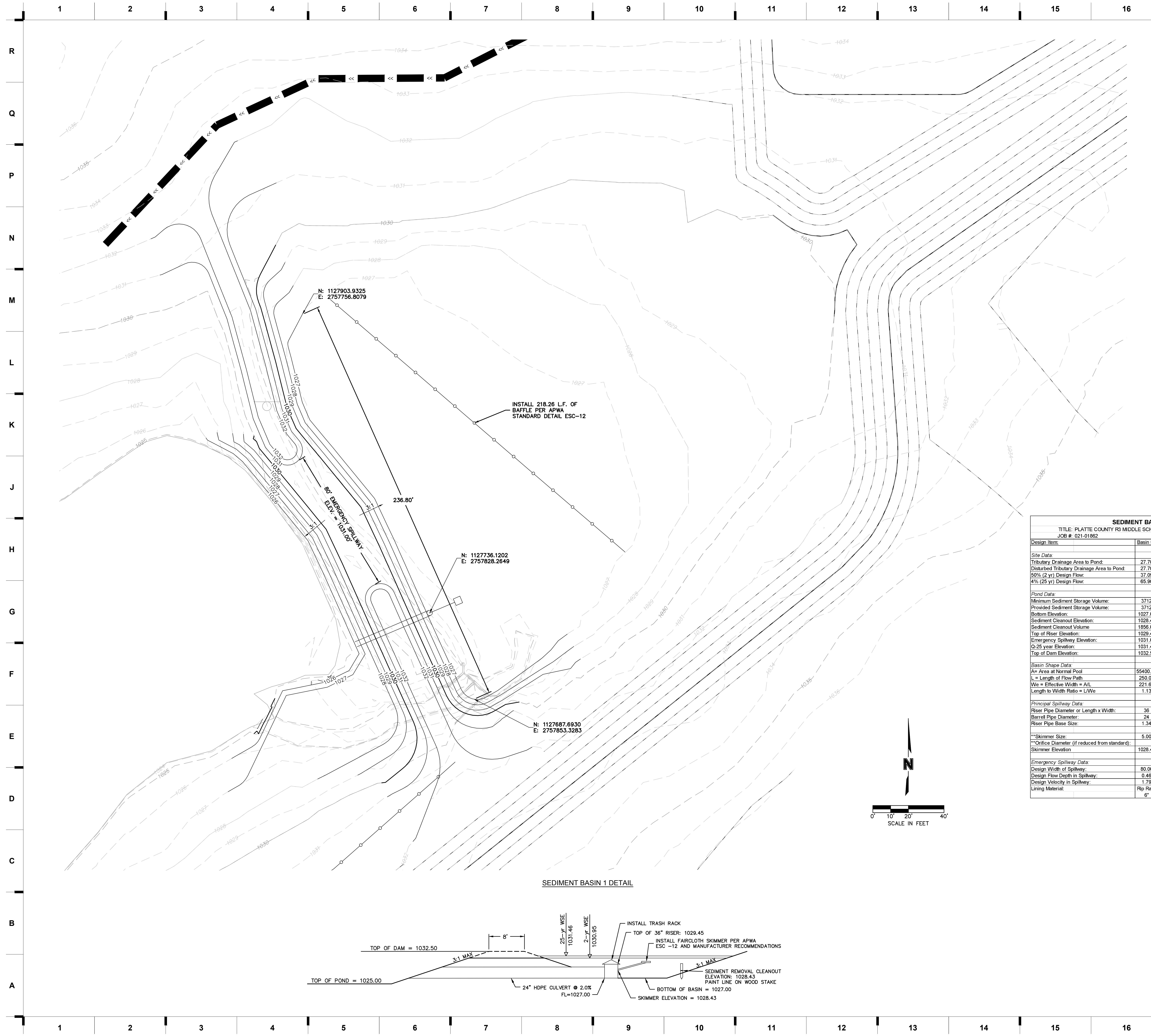


JOB NO: 2021
 DRAWN BY: AAG/SUN/OS/QL
 CHECKED BY: DE
 DATE: 08.16.2021



C203

8/13/2021 10:09:55 AM



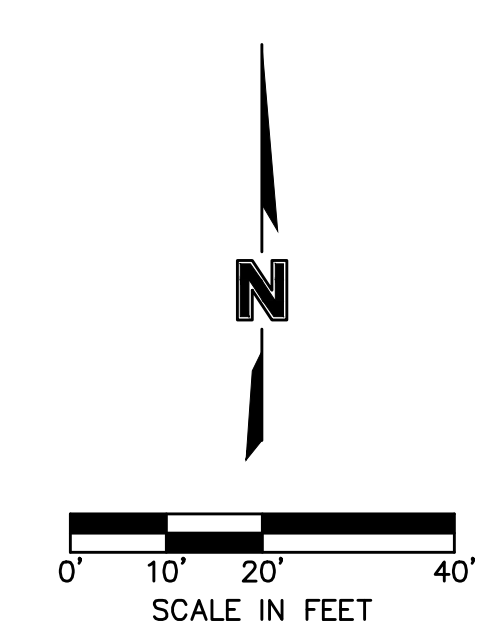
INSTALL 218.26 L.F. OF
BAFFLE PER APWA
STANDARD DETAIL ESC-12

N: 1127903.9325
E: 2757756.8079

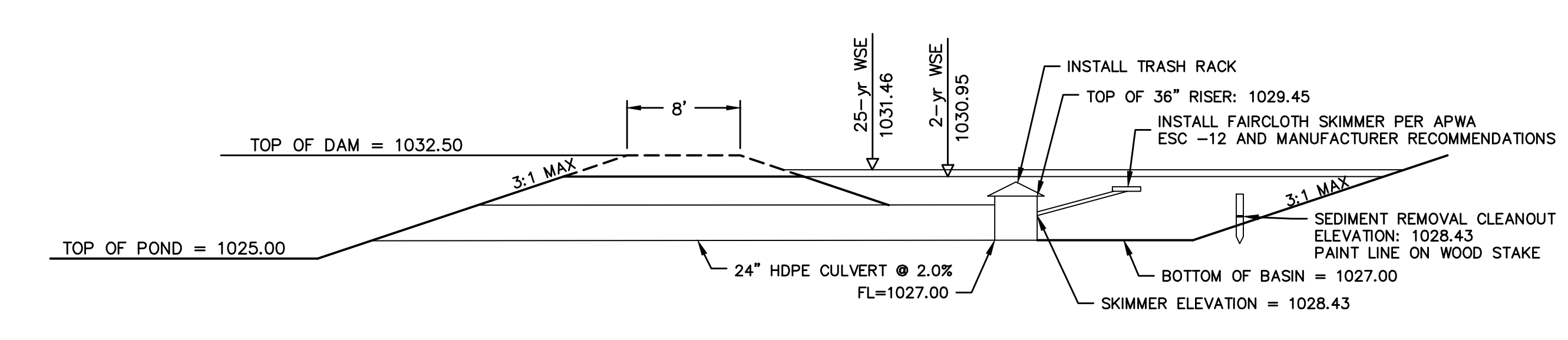
N: 1127736.1202
E: 2757828.2649

N: 1127687.6930
E: 2757853.3283

SEDIMENT BASIN DESIGN DATA SUMMARY			
TITLE: PLATTE COUNTY R3 MIDDLE SCHOOL			
JOB #: 021-01862			
Design Item	Basin #1	Units	Notes
Site Data:			
Tributary Drainage Area to Pond:	27.70	Acres	
Disturbed Tributary Drainage Area to Pond:	27.70	Acres	
50% (2-yr) Design Flow:	37.09	cfs	
4% (25-yr) Design Flow:	65.90	cfs	
Pond Data:			
Minimum Sediment Storage Volume:	3712	cu. yd.	134 cy/acre minimum
Provided Sediment Storage Volume:	3712	cu. yd.	134 cy/acre minimum
Bottom Elevation:	1027.00	Ft	
Sediment Cleanout Elevation:	1028.43	Ft	Elevation Equal to 50% of Original Design Volume.
Sediment Cleanout Volume:	1856.00	cu. yd.	
Top of Riser Elevation:	1029.45	Ft	Top of Dry Storage Volume
Emergency Spillway Elevation:	1031.00	Ft	at or Above Q-2 elev. 1.0 ft min above principal spillway
Q-25 year Elevation:	1031.46	Ft	
Top of Dam Elevation:	1032.50	Ft	1.0 ft min above Q-25 elev.
Basin Shape Data:			
Aw Area at Normal Pool	55400.92	SF	
L = Length of Flow Path	250.00	Ft	
We = Effective Width = A/L	221.60	Ft	
Length to Width Ratio = L/We	1.13		If Length to Width Ratio is less than 2, baffles are required
Principal Spillway Data:			
Riser Pipe Diameter or Length x Width:	36	in	15-inch min. Size for 2 year flow minimum
Barrel Pipe Diameter:	24	in	15-inch min. Size for 2 year flow minimum
Riser Pipe Base Size:	1.34	cu. yd.	Size to Prevent Floation. 1.25 safety factor required.
**Skimmer Size:	5.00	in	Skimmer sized to dewater in 48 to 72 hours
**Orifice Diameter (if reduced from standard):		in	**Based on ASP Enterprises Faircloth Skimmer Design Guide
Skimmer Elevation:	1028.43	Ft	Flowline of skimmer at riser
Emergency Spillway Data:			
Design Width of Spillway:	80.00	Ft	
Design Flow Depth in Spillway:	0.46	Ft	
Design Velocity in Spillway:	1.79	Ft/sec	
Lining Material:	Rip Rap	6"	



SEDIMENT BASIN 1 DETAIL



SITE KEYMAP
NOT TO SCALE

olsson

OLSSON - CIVIL ENGINEERING
NO. CERTIFICATE OF AUTHORITY #001592
1301 BURLINGTON, SUITE 100
NORTH KANSAS CITY, MO 64116 TEL 816.361.1177 www.olsson.com

we design the future™
1828 Walnut Street Suite 922
Kansas City, MO 64108
1.816.412.7100
115 Wilcox Street Suite 210
Castle Rock, CO 80104
1.720.949.1689
HOLLISANDMILLER.COM

CIVIL ENGINEER
Olsson, Inc.
State Certificate of Authority #001592
1301 Burlington Street, Suite 100
North Kansas City, MO 64116
913.361.1170 phone
816.361.1888 fax

LANDSCAPE ARCHITECT
Olsson, Inc.
State Certificate of Authority #2005000285
1301 Burlington Street, Suite 100
North Kansas City, MO 64116
913.361.1170 phone
816.361.1888 fax

MEPF ENGINEER
Henderson Engineers
State Certificate of Authority #E-556D
8345 Lenexa Drive, Ste 300
Lenexa, KS 66214
913.742.5000 phone
913.742.5001 fax

AVIT ENGINEER
Henderson Engineers
State Certificate of Authority #E-556D
8345 Lenexa Drive, Ste 300
Lenexa, KS 66214
913.742.5000 phone
913.742.5001 fax

Platte County Middle
Platte County School District
N Platte Purchase Drive & NW 95th,
Kansas City, MO 64154

REVISIONS:

#	Description	Date

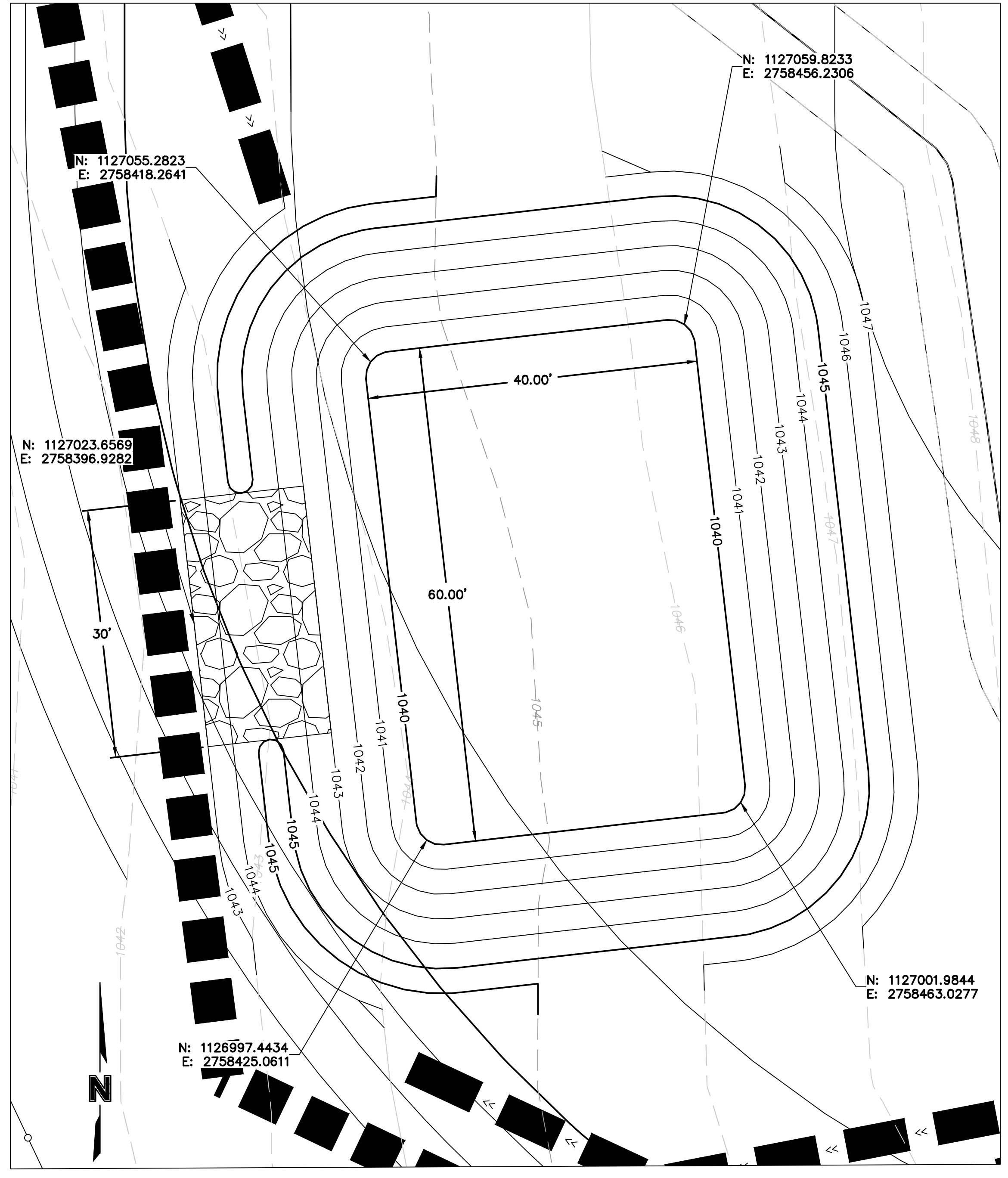


JOB NO: 20021
DRAWN BY: AAGS/JUN/S/O/L
CHECKED BY: DE
DATE: 08.16.2021

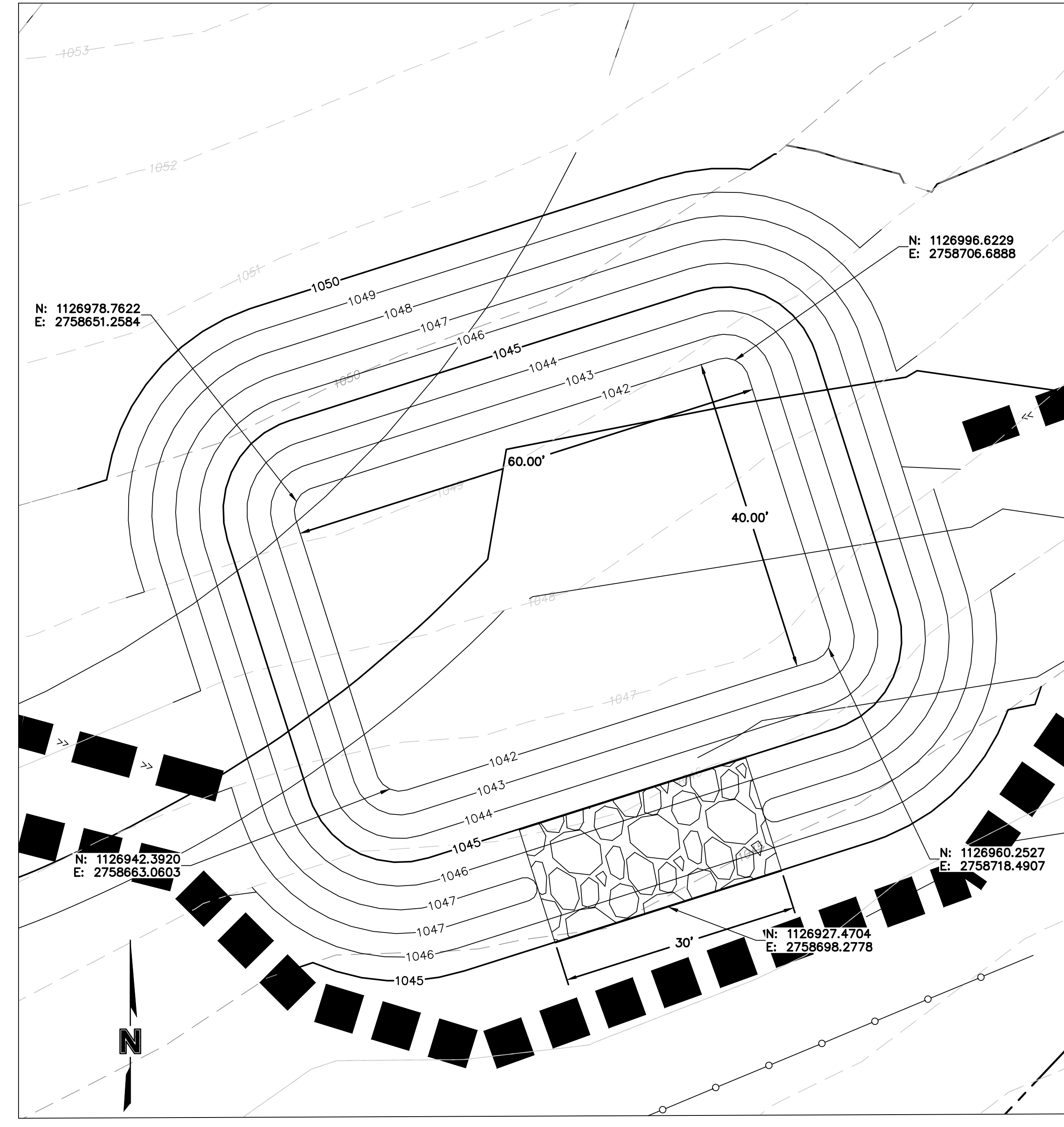
C204

1 2 3 4 5 6 7 8 9 10 11 12 13 14 15 16

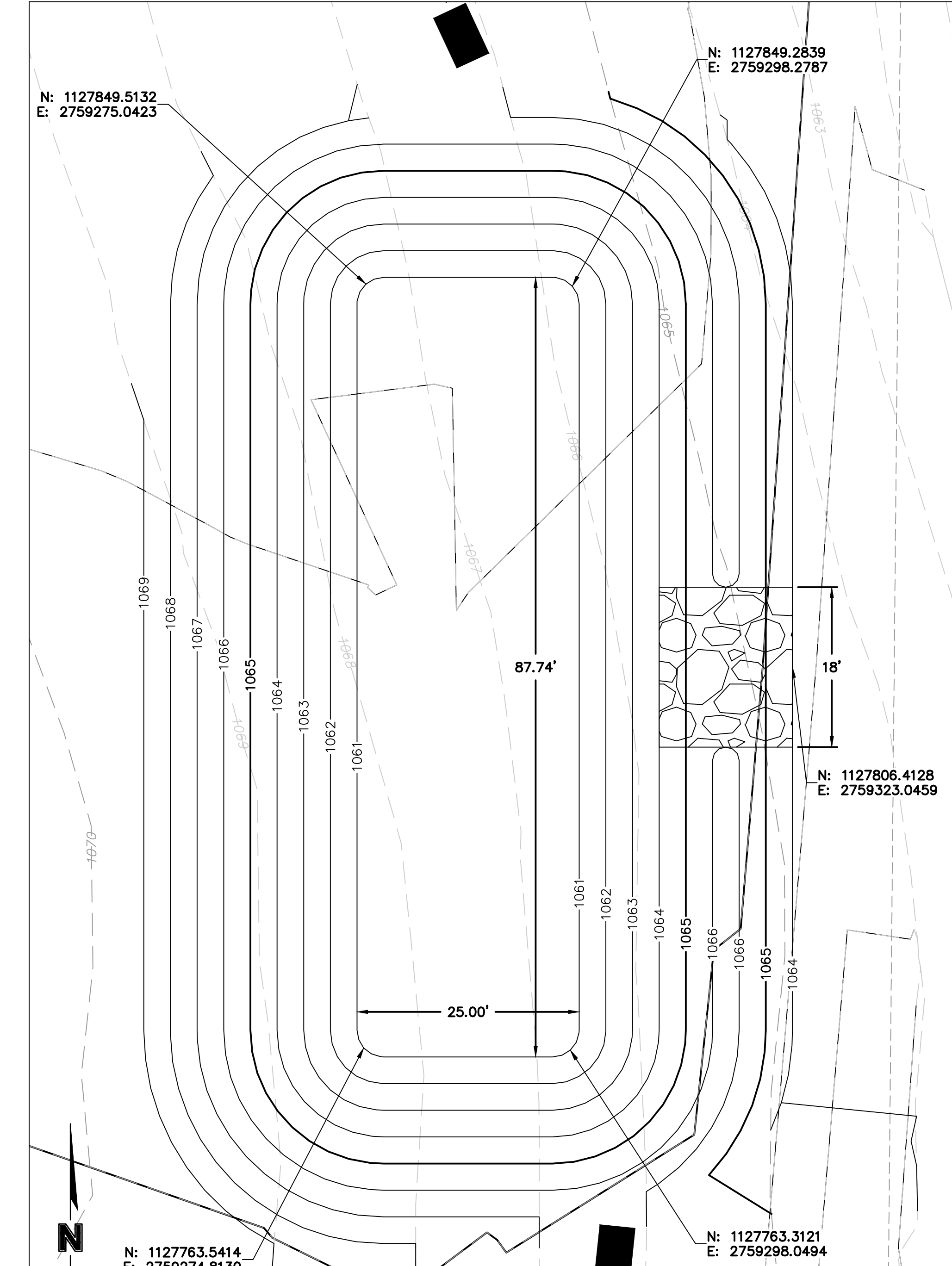
R
Q
P
N
M
L
K
J
H
G
F
E
D
C
B
A



SEDIMENT TRAP 1 DETAIL



SEDIMENT TRAP 2 DETAIL



SEDIMENT TRAP 3 DETAIL

TRAP	TRIBUTARY AREA (AC.)	REQUIRED VOLUME (C.F.)	BERM HEIGHT "H" (FT.)	SPILLWAY HEIGHT "H _s " (FT.)	STORAGE VOLUME (C.F.)	BERM TOP WIDTH "W" (FT.)	BOTTOM ELEVATION (FT.)	RIPRAP ELEVATION (FT.)	TOP OF BERM ELEVATION (FT.)	SPILLWAY LENGTH (FT.)	EXCAVATED DEPTH (FT.)	EXCAVATED VOLUME (C.F.)	SEDIMENT CLEANOUT VOLUME (C.F.)	SEDIMENT CLEANOUT ELEVATION (FT.)
1	5.00	9000.00	2.0	1.0	10058.13	2.0	1040	1044.00	1045.00	30	2.0	6026.58	2011.63	1040.75
2	5.00	9000.00	2.0	1.0	10058.13	2.0	1040	1044.00	1045.00	30	2.0	6026.58	2011.63	1040.75
3	3.00	5400.00	2.0	1.0	11026.77	2.0	1061	1065.00	1066.00	18	2.0	6521.87	2205.35	1061.77

we design the future™
1828 Walnut Street Suite 922
Kansas City, MO 64108
1-816-412-7700

115 Wilcox Street Suite 210
Castle Rock, CO 80104
1-720-949-1689
HOLLISANDMILLER.COM

Hollis + Miller Architects
Missouri State Certificate of Authority
Architecture # 0002181
Structure # 200903333

CIVIL ENGINEER
Olsson, Inc.
State Certificate of Authority #001592
1301 Burlington Street, Suite 100
North Kansas City, MO 64116
913.381.1170 phone
816.361.1888 fax

LANDSCAPE ARCHITECT
Olsson, Inc.
State Certificate of Authority #2005000285
1301 Burlington Street, Suite 100
North Kansas City, MO 64116
913.381.1170 phone
816.361.1888 fax

MEPF ENGINEER
Henderson Engineers
State Certificate of Authority #E-556D
8345 Lenexa Drive, Ste 300
Lenexa, KS 66214
913.742.5000 phone
913.742.5001 fax

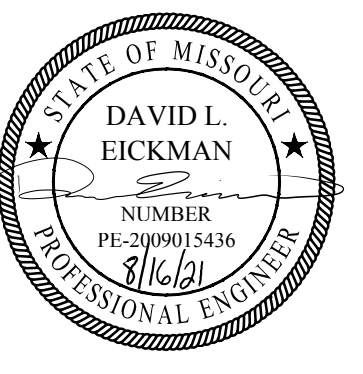
AVIT ENGINEER
Henderson Engineers
State Certificate of Authority #E-556D
8345 Lenexa Drive, Ste 300
Lenexa, KS 66214
913.742.5000 phone
913.742.5001 fax

N: 1127806.4128
E: 2759323.0459

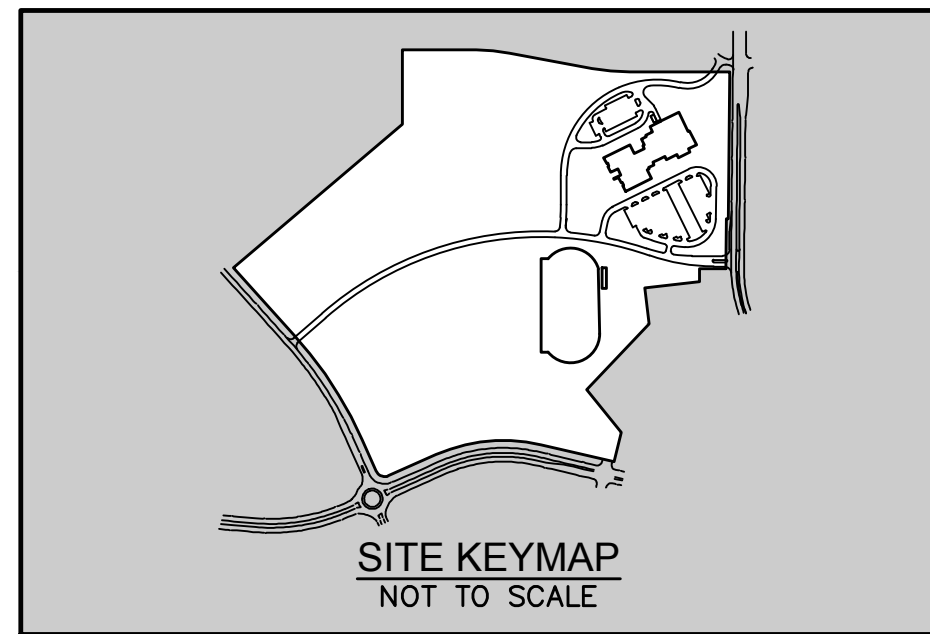
Platte County Middle
Platte County School District
N Platte Purchase Drive & NW 95th,
Kansas City, MO 64154

REVISIONS:

#	Description	Date



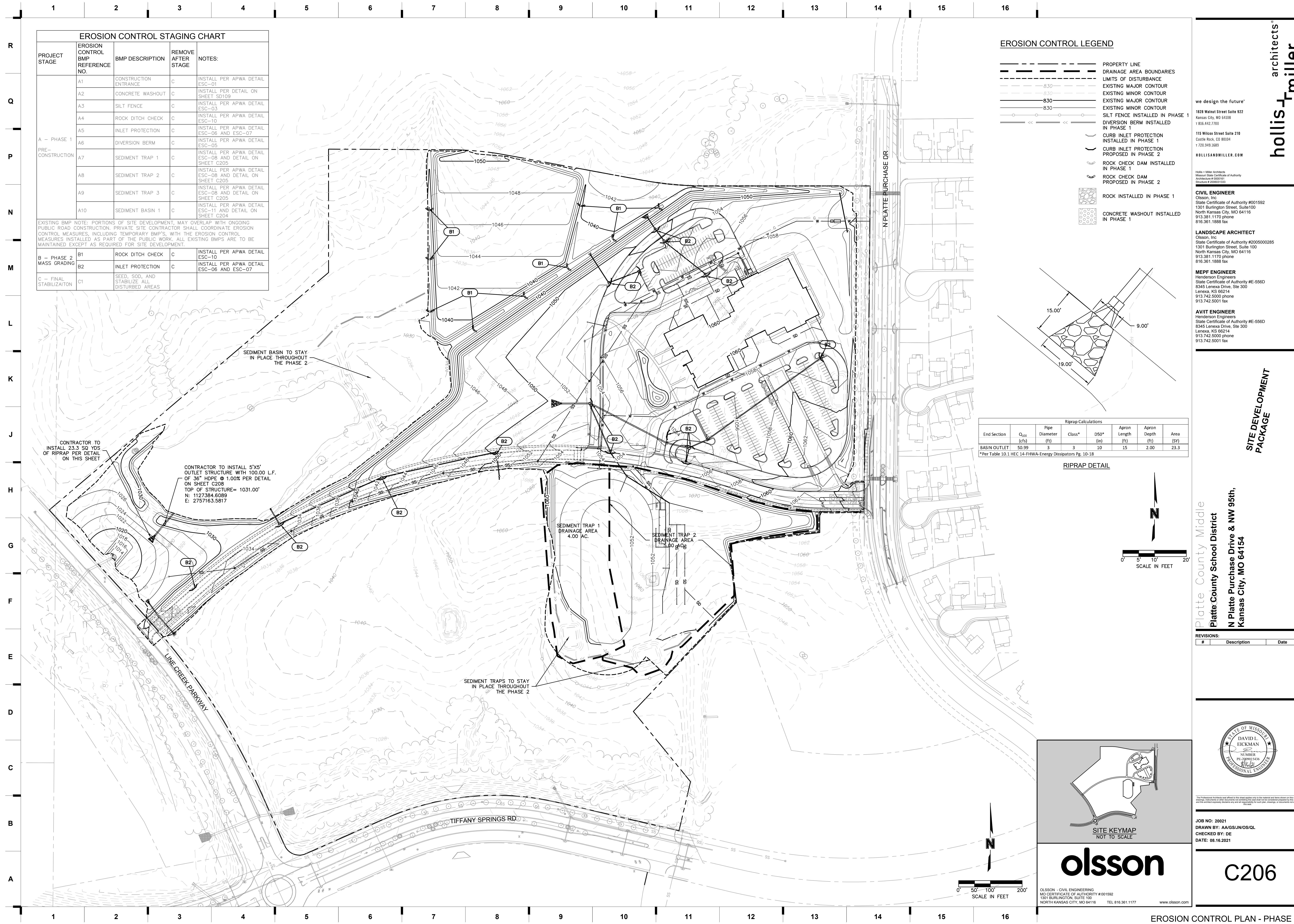
JOB NO: 20021
DRAWN BY: AAG/SUN/OS/QL
CHECKED BY: DE
DATE: 08.16.2021



olsson
OLSSON - CIVIL ENGINEERING
MO CERTIFICATE OF AUTHORITY #001592
1301 BURLINGTON, SUITE 100
NORTH KANSAS CITY, MO 64116 TEL 816.361.1177 www.olsson.com

C205

8/13/2021 10:09:55 AM

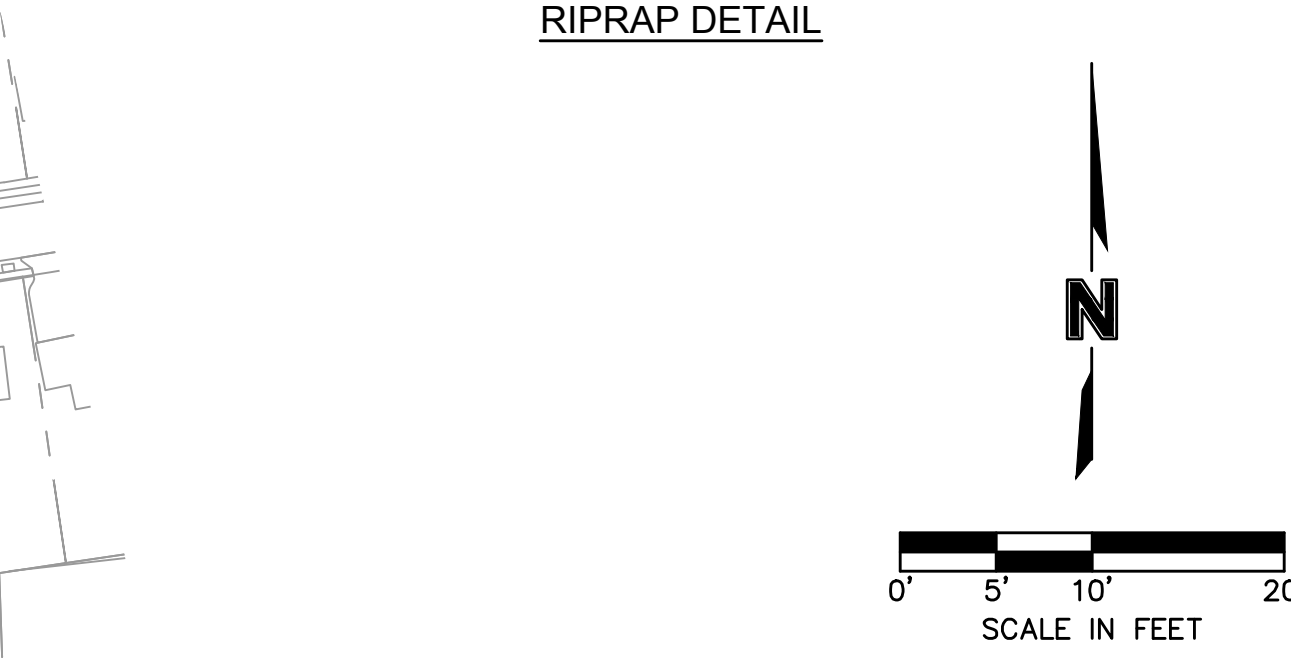
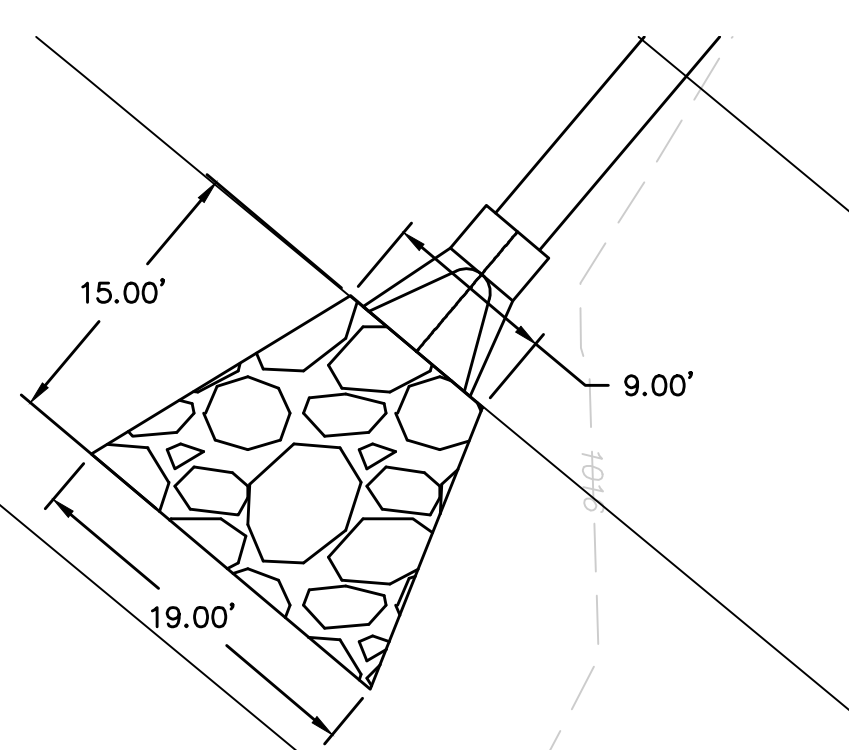


EROSION CONTROL STAGING CHART				
PROJECT STAGE	EROSION CONTROL BMP REFERENCE NO.	BMP DESCRIPTION	REMOVE AFTER STAGE	NOTES:
A - PHASE 1 PRE-CONSTRUCTION	A1	CONSTRUCTION ENTRANCE	C	INSTALL PER APWA DETAIL ESC-01
	A2	CONCRETE WASHOUT	C	INSTALL PER DETAIL ON SHEET SD109
	A3	SILT FENCE	C	INSTALL PER APWA DETAIL ESC-03
	A4	ROCK DITCH CHECK	C	INSTALL PER APWA DETAIL ESC-10
	A5	INLET PROTECTION	C	INSTALL PER APWA DETAIL ESC-06 AND ESC-07
	A6	DIVERSION BERM	C	INSTALL PER APWA DETAIL ESC-05
	A7	SEDIMENT TRAP 1	C	INSTALL PER APWA DETAIL ESC-08 AND DETAIL ON SHEET C205
	A8	SEDIMENT TRAP 2	C	INSTALL PER APWA DETAIL ESC-08 AND DETAIL ON SHEET C205
	A9	SEDIMENT TRAP 3	C	INSTALL PER APWA DETAIL ESC-08 AND DETAIL ON SHEET C205
	A10	SEDIMENT BASIN 1	C	INSTALL PER APWA DETAIL ESC-11 AND DETAIL ON SHEET C204
EXISTING BMP NOTE: PORTIONS OF SITE DEVELOPMENT, MAY OVERLAP WITH ONGOING PUBLIC ROAD CONSTRUCTION. PRIVATE SITE CONTRACTOR SHALL COORDINATE EROSION CONTROL MEASURES, INCLUDING TEMPORARY BMP'S, WITH THE EROSION CONTROL MEASURES INSTALLED AS PART OF THE PUBLIC WORK. ALL EXISTING BMP'S ARE TO BE MAINTAINED EXCEPT AS REQUIRED FOR SITE DEVELOPMENT.				
B - PHASE 2 MASS GRADING	B1	ROCK DITCH CHECK	C	INSTALL PER APWA DETAIL ESC-10
	B2	INLET PROTECTION	C	INSTALL PER APWA DETAIL ESC-06 AND ESC-07
C - FINAL STABILIZATION	C1	SEED, SOO, AND STABILIZE ALL DISTURBED AREAS		

EROSION CONTROL LEGEND	
	PROPERTY LINE
	DRAINAGE AREA BOUNDARIES
	LIMITS OF DISTURBANCE
	EXISTING MAJOR CONTOUR
	EXISTING MINOR CONTOUR
	EXISTING MAJOR CONTOUR
	EXISTING MINOR CONTOUR
	DIVERSION BERM INSTALLED IN PHASE 1
	DIVERSION BERM INSTALLED IN PHASE 1
	CURB INLET PROTECTION INSTALLED IN PHASE 1
	CURB INLET PROTECTION PROPOSED IN PHASE 2
	ROCK CHECK DAM INSTALLED IN PHASE 1
	ROCK CHECK DAM PROPOSED IN PHASE 2
	ROCK INSTALLED IN PHASE 1
	CONCRETE WASHOUT INSTALLED IN PHASE 1

Riprap Calculations						
End Section	Q ₁₀₀ (cfs)	Pipe Diameter (ft)	Class*	D50* (in)	Apron Length (ft)	Apron Depth (ft)
BASIN OUTLET	50.99	3	3	10	15	2.00
						23.3

*Per Table 10.1 HEC 14-FHWA-Energy Dissipators Pg. 10-18



we design the future™
1828 Walnut Street Suite 922
Kansas City, MO 64108
1.816.412.7100

115 Wilcox Street Suite 210
Castle Rock, CO 80104
1.720.949.1689
HOLLISANDMILLER.COM

Hollis + Miller Architects
Missouri State Certificate of Authority
Architecture # 0000181
Structure # 000001333

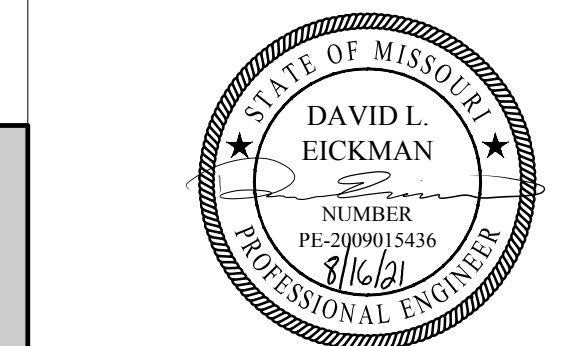
CIVIL ENGINEER
Olsson, Inc.
State Certificate of Authority #001592
1301 Burlington Street, Suite 100
North Kansas City, MO 64116
913.381.1170 phone
816.361.1888 fax

LANDSCAPE ARCHITECT
Olsson, Inc.
State Certificate of Authority #2005000285
1301 Burlington Street, Suite 100
North Kansas City, MO 64116
913.381.1170 phone
816.361.1888 fax

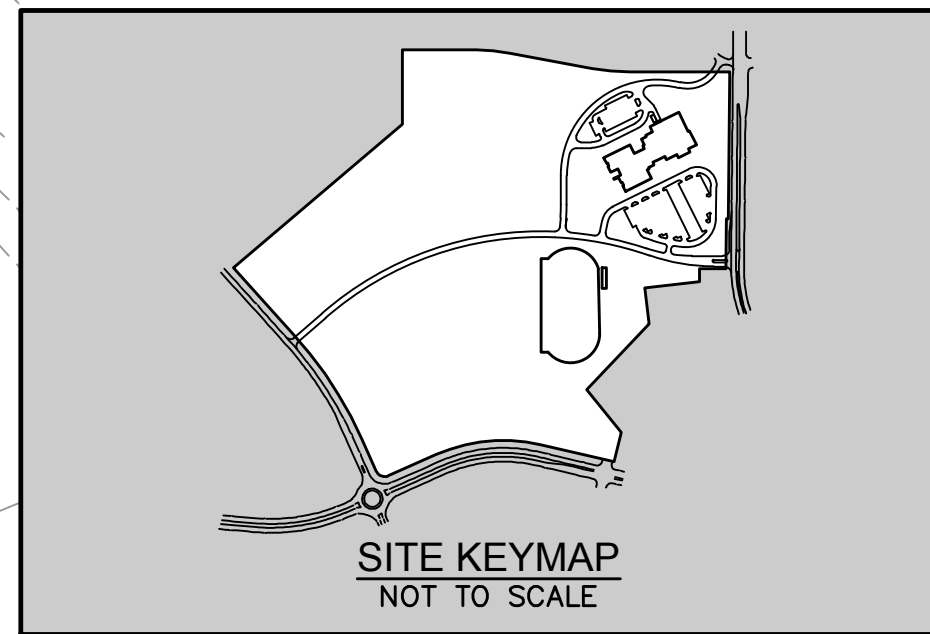
MEPF ENGINEER
Henderson Engineers
State Certificate of Authority #E-556D
8345 Lenexa Drive, Ste 300
Lenexa, KS 66214
913.742.5000 phone
913.742.5001 fax

AVIT ENGINEER
Henderson Engineers
State Certificate of Authority #E-556D
8345 Lenexa Drive, Ste 300
Lenexa, KS 66214
913.742.5000 phone
913.742.5001 fax

REVISIONS:		
#	Description	Date



JOB NO: 20221
DRAWN BY: AAG/SUN/OS/QL
CHECKED BY: DE
DATE: 08.16.2021



olsson
OLSSON - CIVIL ENGINEERING
MO CERTIFICATE OF AUTHORITY #001592
1301 BURLINGTON, SUITE 100
NORTH KANSAS CITY, MO 64116 TEL 816.361.1177 www.olsson.com

C206

SITE DEVELOPMENT PACKAGE

Platte County Middle
Platte County School District
N Platte Purchase Drive & NW 95th,
Kansas City, MO 64154



EROSION CONTROL STAGING CHART				
PROJECT STAGE	EROSION CONTROL BMP REFERENCE NO.	BMP DESCRIPTION	REMOVE AFTER STAGE	NOTES:
A - PHASE 1 PRE-CONSTRUCTION	A1	CONSTRUCTION ENTRANCE	C	INSTALL PER APWA DETAIL ESC-01
	A2	CONCRETE WASHOUT	C	INSTALL PER DETAIL ON SHEET SD109
	A3	SILT FENCE	C	INSTALL PER APWA DETAIL ESC-03
	A4	ROCK DITCH CHECK	C	INSTALL PER APWA DETAIL ESC-10
	A5	INLET PROTECTION	C	INSTALL PER APWA DETAIL ESC-06 AND ESC-07
	A6	DIVERSION BERM	C	INSTALL PER APWA DETAIL ESC-05
	A7	SEDIMENT TRAP 1	C	INSTALL PER APWA DETAIL ESC-08 AND DETAIL ON SHEET C205
	A8	SEDIMENT TRAP 2	C	INSTALL PER APWA DETAIL ESC-08 AND DETAIL ON SHEET C205
	A9	SEDIMENT TRAP 3	C	INSTALL PER APWA DETAIL ESC-08 AND DETAIL ON SHEET C205
	A10	SEDIMENT BASIN 1	C	INSTALL PER APWA DETAIL ESC-11 AND DETAIL ON SHEET C205
EXISTING BMP NOTE: PORTIONS OF SITE DEVELOPMENT, MAY OVERLAP WITH ONGOING PUBLIC ROAD CONSTRUCTION. PRIVATE SITE CONTRACTOR SHALL COORDINATE EROSION CONTROL MEASURES, INCLUDING TEMPORARY BMP'S, WITH THE EROSION CONTROL MEASURES INSTALLED AS PART OF THE PUBLIC WORK. ALL EXISTING BMP'S ARE TO BE MAINTAINED EXCEPT AS REQUIRED FOR SITE DEVELOPMENT.				
B - PHASE 2 MASS GRADING	B1	ROCK DITCH CHECK	C	INSTALL PER APWA DETAIL ESC-10
	B2	INLET PROTECTION	C	INSTALL PER APWA DETAIL ESC-06 AND ESC-07
C - FINAL STABILIZATION	C1	SEED, SOO, AND STABILIZE ALL DISTURBED AREAS		

EROSION CONTROL LEGEND	
	PROPERTY LINE
	EXISTING MAJOR CONTOUR
	EXISTING MINOR CONTOUR
	EXISTING MAJOR CONTOUR
	EXISTING MINOR CONTOUR
	SILT FENCE INSTALLED IN PHASES 1-2
	CURB INLET PROTECTION INSTALLED IN PHASES 1-2
	TURF GRASS SEEDING

we design the future™
 1828 Walnut Street Suite 922
 Kansas City, MO 64108
 1 816.412.7100
 115 Wilcox Street Suite 210
 Castle Rock, CO 80104
 1 720.949.1689
 HOLLISANDMILLER.COM

Holla + Miller Architects
 Missouri State Certificate of Authority
 Architecture # 0000281
 Structure # 000003333

CIVIL ENGINEER
 Olsson, Inc.
 State Certificate of Authority #001592
 1301 Burlington Street, Suite 100
 North Kansas City, MO 64116
 913.381.1170 phone
 816.361.1888 fax

LANDSCAPE ARCHITECT
 Olsson, Inc.
 State Certificate of Authority #2005000285
 1301 Burlington Street, Suite 100
 North Kansas City, MO 64116
 913.381.1170 phone
 816.361.1888 fax

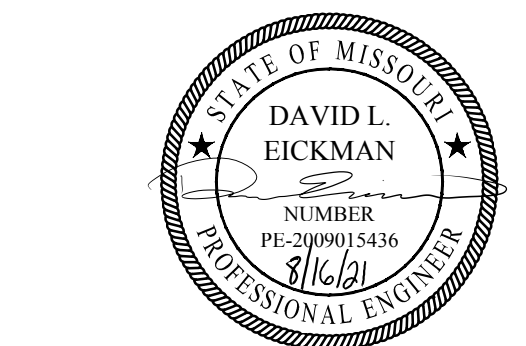
MEPF ENGINEER
 Henderson Engineers
 State Certificate of Authority #E-556D
 8345 Lenexa Drive, Ste 300
 Lenexa, KS 66214
 913.742.5000 phone
 913.742.5001 fax

AVIT ENGINEER
 Henderson Engineers
 State Certificate of Authority #E-556D
 8345 Lenexa Drive, Ste 300
 Lenexa, KS 66214
 913.742.5000 phone
 913.742.5001 fax

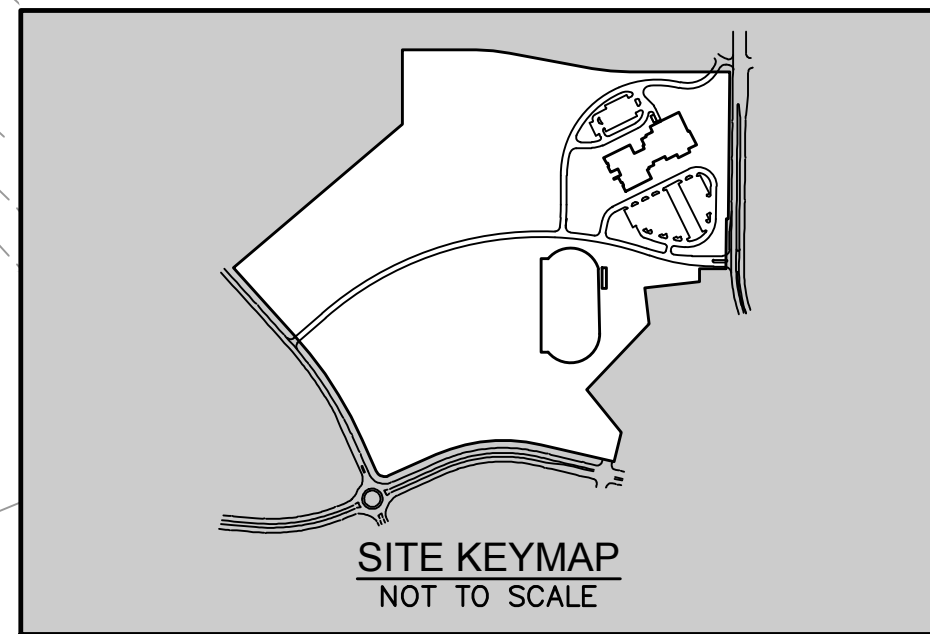
SITE DEVELOPMENT PACKAGE

Platte County Middle
 Platte County School District
 N Platte Purchase Drive & NW 95th,
 Kansas City, MO 64154

REVISIONS:		
#	Description	Date



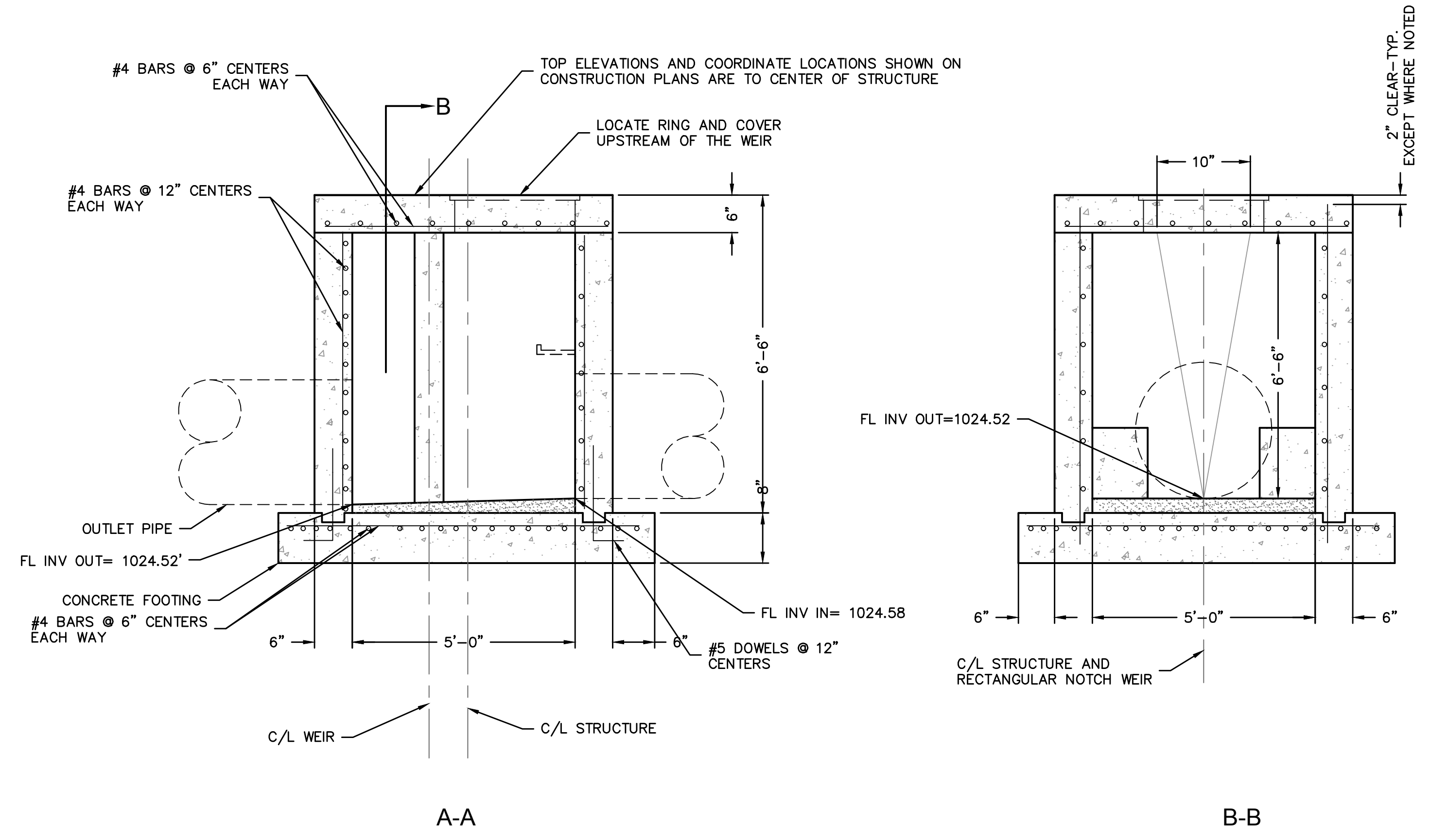
JOB NO: 20021
 DRAWN BY: AAGS/JUN/OS/QL
 CHECKED BY: DE
 DATE: 08.16.2021



olsson
 OLSSON - CIVIL ENGINEERING
 MISSOURI STATE CERTIFICATE OF AUTHORITY #001592
 1301 BURLINGTON, SUITE 100
 NORTH KANSAS CITY, MO 64116 TEL 816.361.1177 www.olsson.com

C207

8/13/2021 10:09:55 AM



OUTLET STRUCTURE DETAILS
NOT TO SCALE

we design the future[®]
 1828 Walnut Street Suite 922
 Kansas City, MO 64108
 1 816.412.7700
 115 Wilcox Street Suite 210
 Castle Rock, CO 80104
 1 720.949.1689
 HOLLISANDMILLER.COM

hollis and miller architects[®]

CIVIL ENGINEER
 Olsson, Inc.
 State Certificate of Authority #001592
 1301 Burlington Street, Suite 100
 North Kansas City, MO 64116
 913.381.1170 phone
 816.361.1888 fax

LANDSCAPE ARCHITECT
 Olsson, Inc.
 State Certificate of Authority #2005000285
 1301 Burlington Street, Suite 100
 North Kansas City, MO 64116
 913.381.1170 phone
 816.361.1888 fax

MEPF ENGINEER
 Henderson Engineers
 State Certificate of Authority #E-556D
 8345 Lenexa Drive, Ste 300
 Lenexa, KS 66214
 913.742.5000 phone
 913.742.5001 fax

AVIT ENGINEER
 Henderson Engineers
 State Certificate of Authority #E-556D
 8345 Lenexa Drive, Ste 300
 Lenexa, KS 66214
 913.742.5000 phone
 913.742.5001 fax

SITE DEVELOPMENT PACKAGE

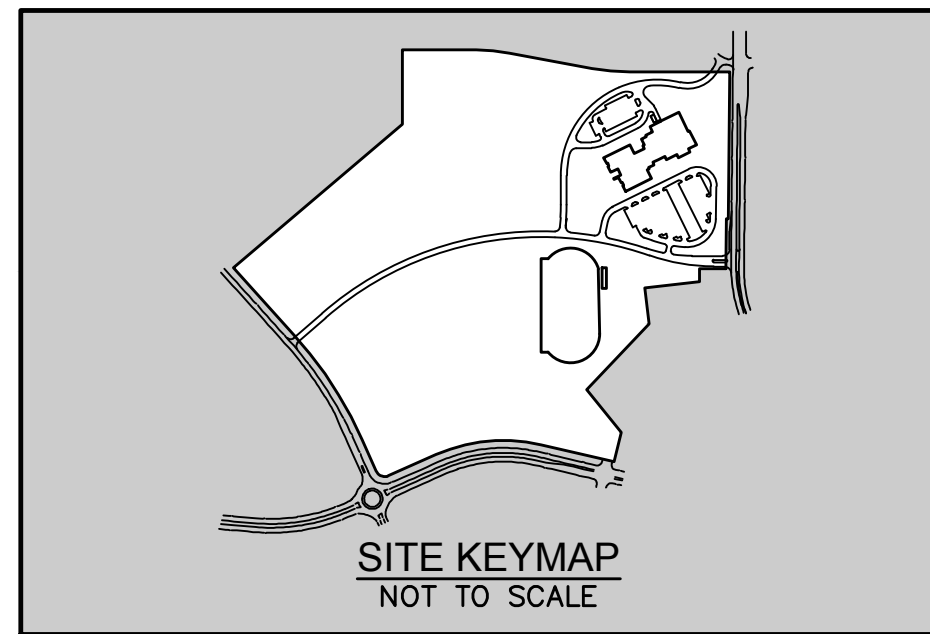
Platte County Middle
 Platte County School District
 N Platte Purchase Drive & NW 95th,
 Kansas City, MO 64154

REVISIONS:

#	Description	Date



JOB NO: 20021
 DRAWN BY: AAG/SUN/OS/QL
 CHECKED BY: DE
 DATE: 08.16.2021



olsson

OLSSON - CIVIL ENGINEERING
 MO CERTIFICATE OF AUTHORITY #001592
 1301 BURLINGTON, SUITE 100
 NORTH KANSAS CITY, MO 64116 TEL 816.361.1177 www.olsson.com

C208