



St. Johns River Water Management District

Ann B. Shortelle, Ph.D., Executive Director

4049 Reid Street • P.O. Box 1429 • Palatka, FL 32178-1429 • 386-329-4500
On the internet at www.sjrwmd.com.

DATE: May 13, 2020

TO: Prospective Respondents

FROM: Gerald Cahalane, Assoc. Procurement Specialist

SUBJECT: Addendum #2 to Quote Request #35657, Tidal-Forested Freshwater Essential Fish Habitat – Trash and Debris Removal

This addendum is to inform prospective respondents of a **virtual pre-bid meeting** that will be hosted **Thursday, May 14, 2020 at 1:30PM**, via teleconference call – details are listed below.

This addendum also contains a brief description of the debris, an updated figure of the project location, and accompanying photographs of the jobsite and debris piles. This detail can be found beginning on page 2 of this addendum.

Responses to this quote request are still due by no later than 5:00PM on, Wednesday, May 20, 2020.

Additionally, please ensure that all quotes are sent in PDF format as an email attachment.

The teleconference will be recorded for the District's records and auditing purposes. Please call into the meeting using the following information:

- Toll-Free Call-in Number: 1-888-585-9008
- Alternative Call-in Number: 657-220-3242
- Conference Room ID Number: 850-427-670#

If you have questions regarding this teleconference, please email me at gcahalan@sjrwmd.com.

Once the teleconference has concluded, the recorded meeting will be posted for all potential respondents to review. An additional addendum will be posted with instructions on how to access the recording. This is done for District record and to provide information to any prospective respondents that are unable to attend the virtual pre-bid meeting.

Please see additional information, an updated project location figure, and photographs of the debris on the subsequent pages of this addendum:

1. The debris piles contain, but are not limited to, the following materials:
 - Plastics
 - Glass
 - Carpeting/Fabrics
 - Metals
 - A Small Boat/Boat Hull
 - Used Tires – Approximately 150-200
 - Roofing Tiles
 - Soil
 - Logs and Other Natural Tree-Debris
 - Other Miscellaneous Residential Materials

2. The debris piles contain combinations of materials and are stacked in an “L” shaped region as depicted on Figure 1 on the next page.
 - There is approximately 5,000 cubic yards of debris, \pm 500 cubic yards
 - This approximation is an estimate, and the amount of debris on the jobsite may vary

3. Only the debris piles are to be removed – prospective respondents should not venture to any other points on the property or jobsite.

4. Prospective respondents *must* dispose of the materials appropriately and in accordance with Federal, State, and Local laws – this point is emphasized for the used tires and other residential debris.

5. No hazardous chemicals or compounds are expected to be present, but prospective respondents should utilize due care when handling or coming into direct contact with any of the debris.

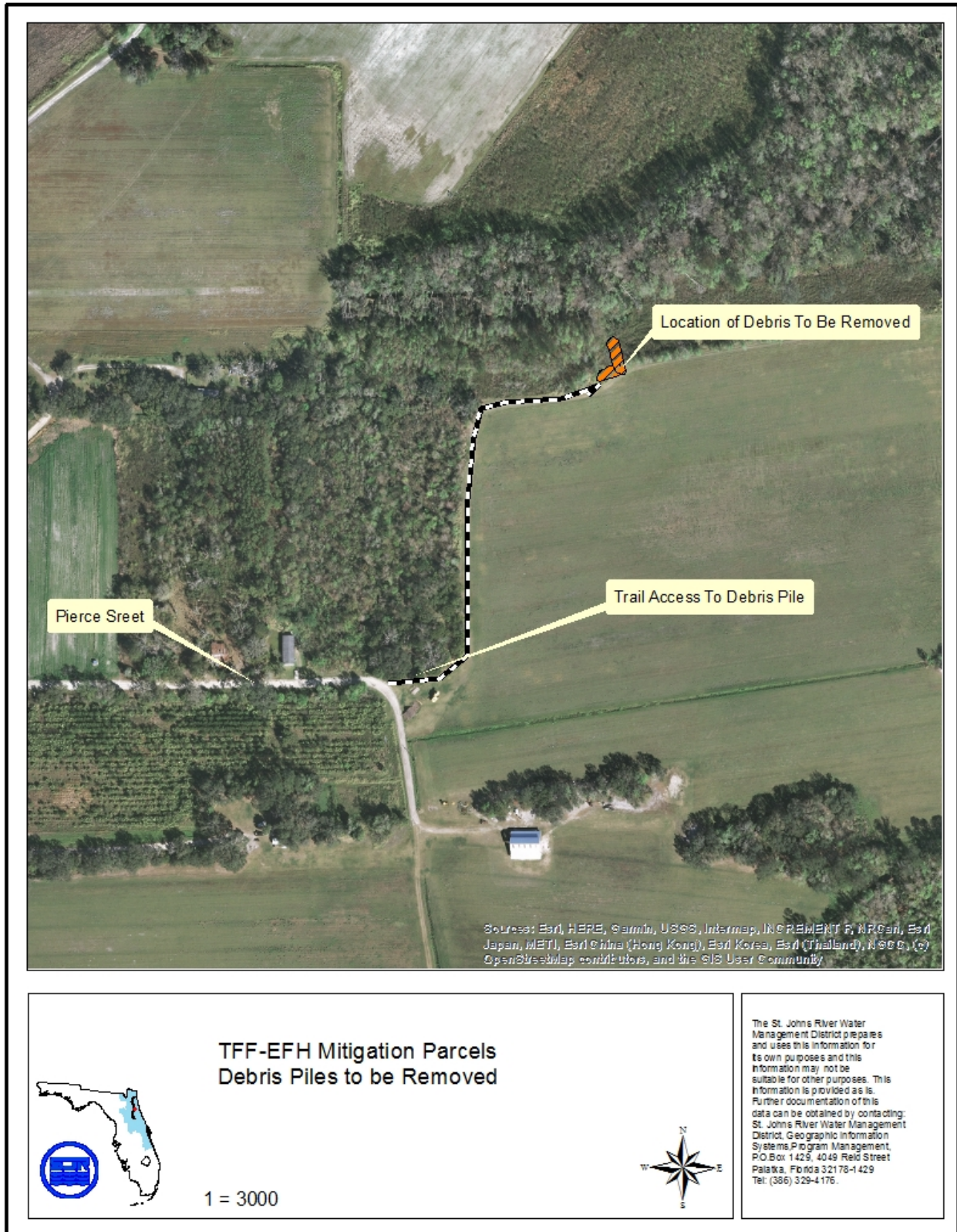


Figure 1. Approximate Location of Debris – Consists of Natural and Residential Debris













