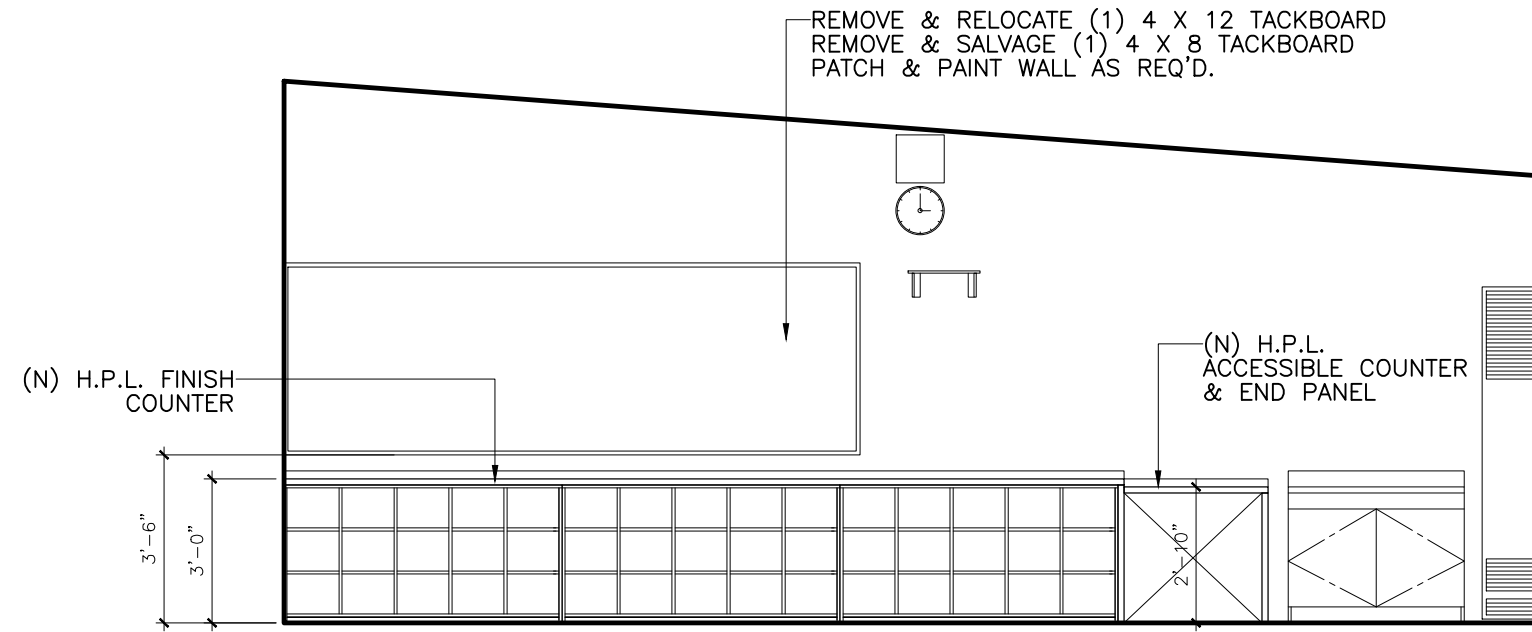
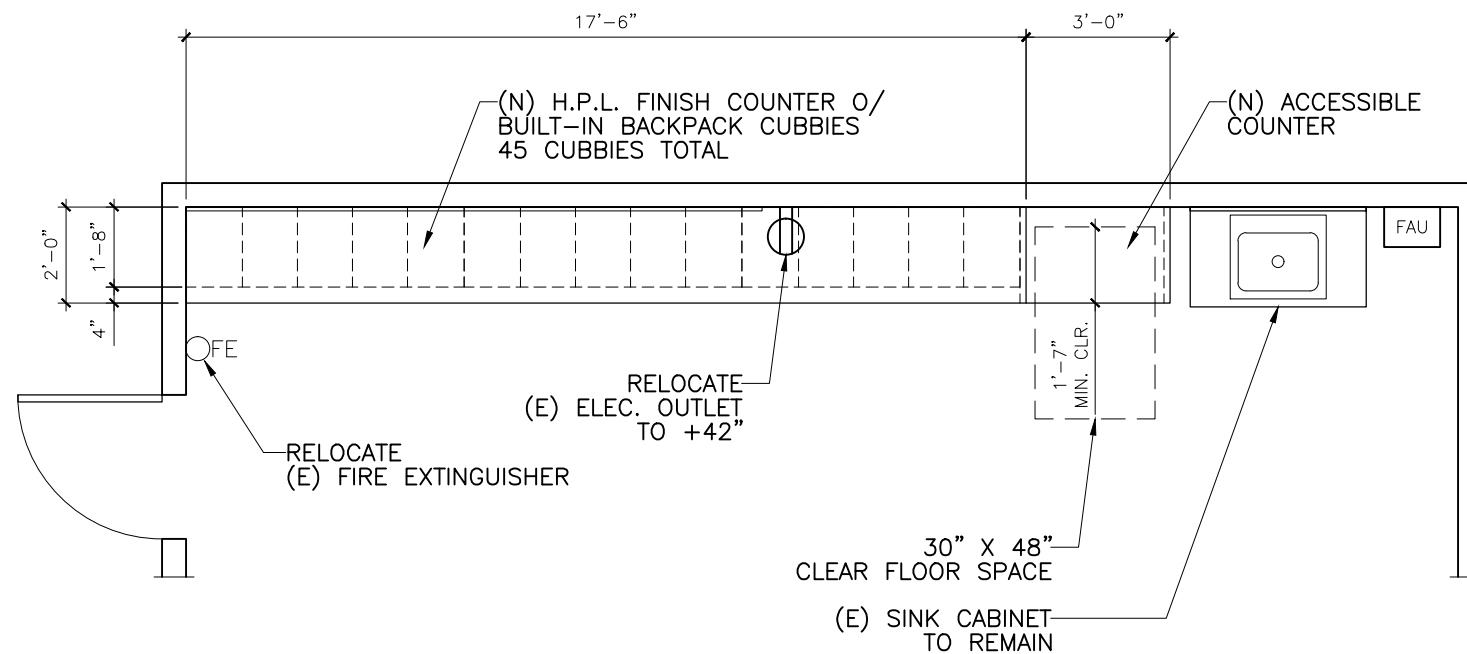


GENERAL NOTES:

1. CONTRACTOR TO FIELD VERIFY ALL MEASUREMENTS.
2. BACKPACK CUBBIES TO BE 3/4" CABINET GRADE BIRCH PLYWOOD W/ CLEAR COAT FINISH.
3. CONTRACTOR TO PROVIDE SHOP DRAWINGS FOR DISTRICT REVIEW PRIOR TO CONSTRUCTION OF CASEWORK.



2 **OPTION 1 - ELEVATION**
SCALE: 1/4"=1'-0"



1 **OPTION 1 - PARTIAL PLAN**
SCALE: 1/4"=1'-0"

RICHARDSON MIDDLE SCHOOL
ROOM 19 - BACKPACK STORAGE
OPTION 1: BUILT-IN CUBBIES

Project
RMS_021419
REV-1

Date
02/21/19

Scale
AS NOTED

Sheet No.
A1